

## RUNNING TRACKER ON A TERMINAL SERVER

Tracker can be run on a Windows 2003 Terminal Server, provided the Windows Terminal Server is properly configured. Depending on the Terminal Server license, multiple machines can remotely connect to the Terminal Server and run Tracker concurrently.

The procedures you need to follow are:

- *Installing the Windows 2003 Terminal Server* on page 1
- *Setting-up Users to Access Terminal Server Machine* on page 7

### ***Installing the Windows 2003 Terminal Server***

The Terminal Server is a sub-component of Windows 2003. The following steps describe how to install the Windows 2003 Terminal Server:

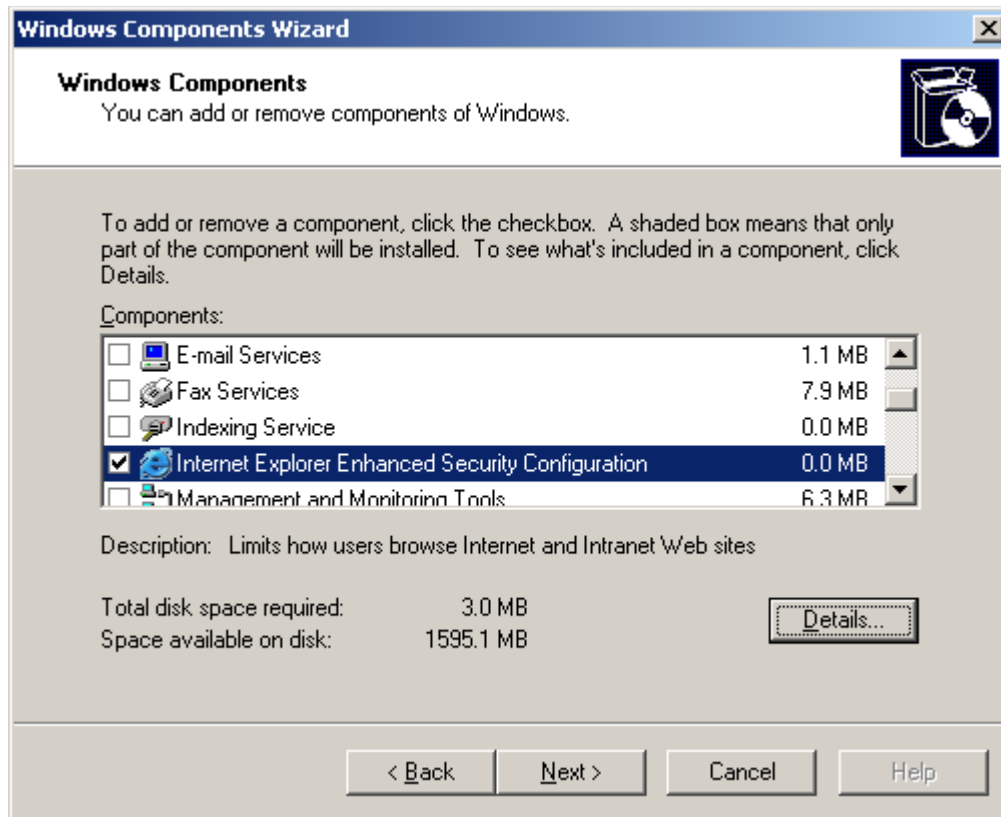
---

#### **Method: Install the Windows 2003 Terminal Server**

---

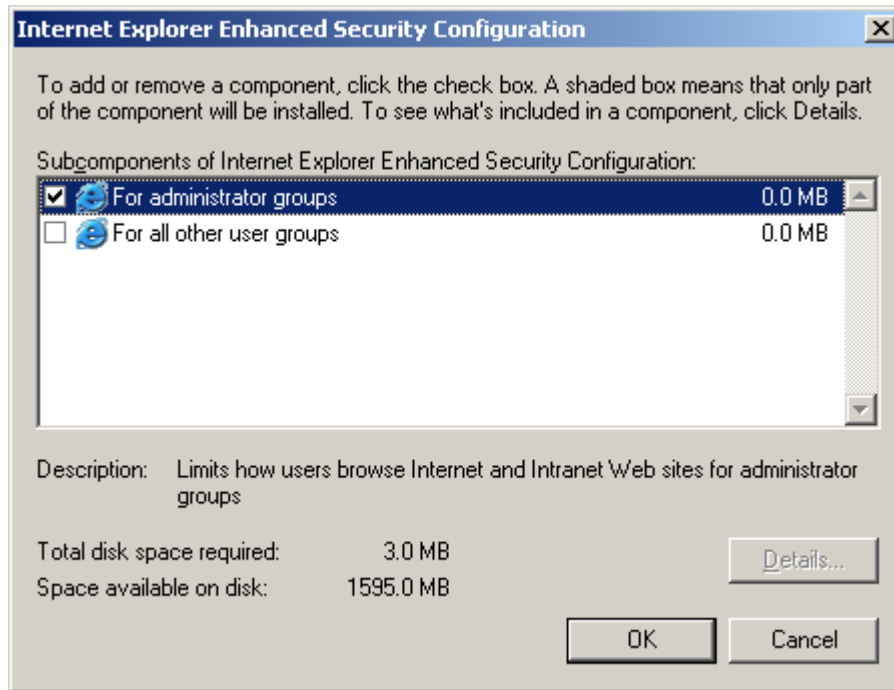
1. On the machine being used for the Terminal Server, click **Start > Settings > Control Panel > Add or Remove Programs**.
2. Click **Add/Remove Windows Components**.

The **Windows Components Wizard** displays.



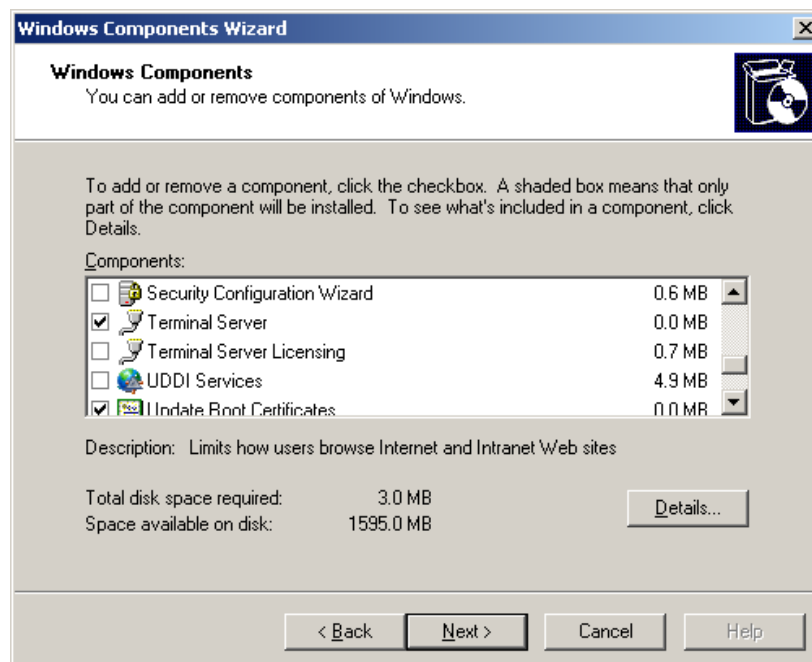
3. Highlight **Internet Explorer Enhanced Security Configuration**. Do not uncheck it.
4. Click **Details...**

The **Internet Explorer Enhanced Security Configuration** dialog displays.

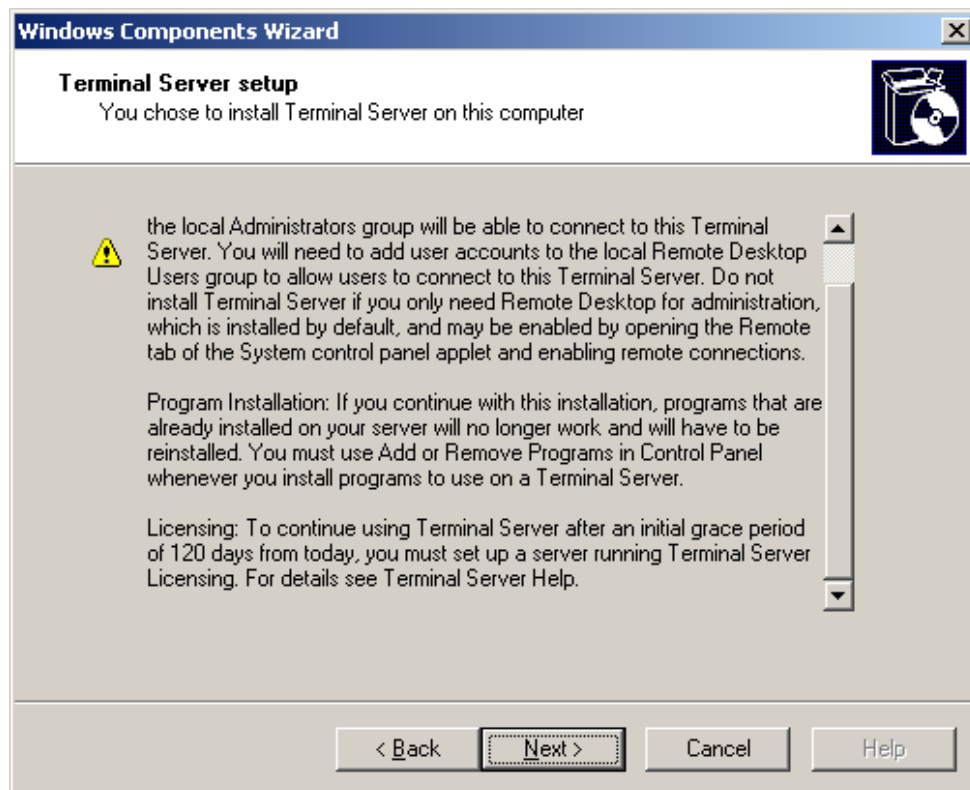


5. Check the item that falls within the policy of your company then click **OK**.

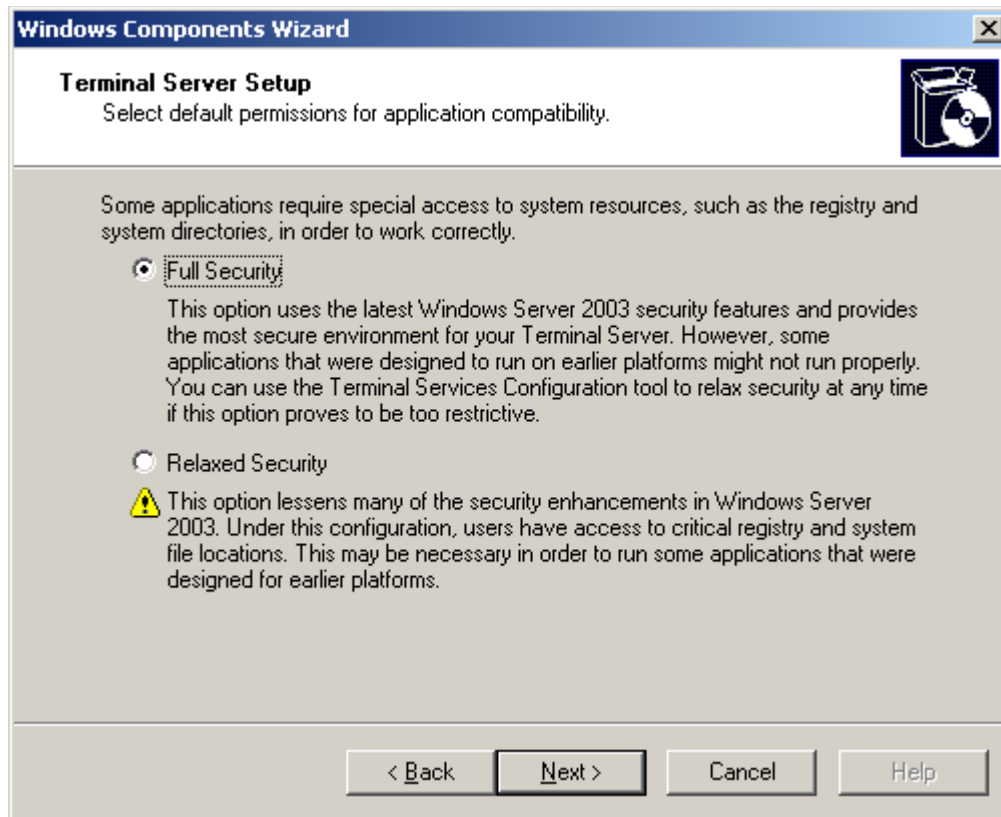
The **Windows Components** dialog displays.



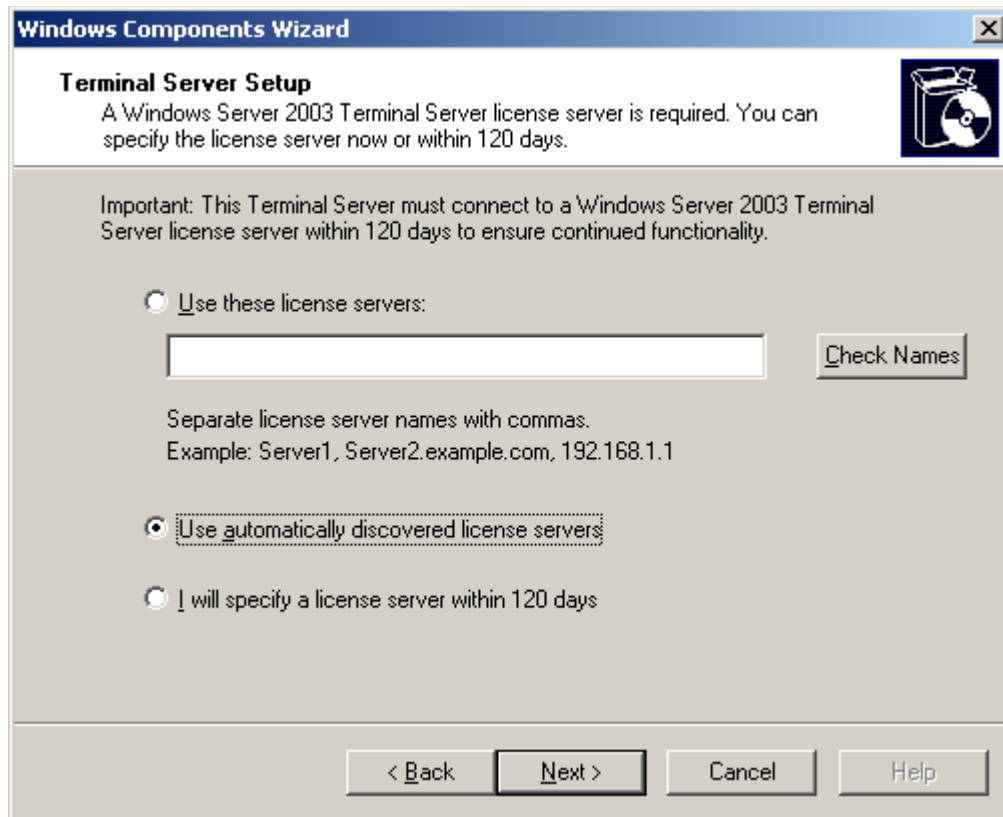
- 
6. Select **Terminal Server**, then click **Next**.



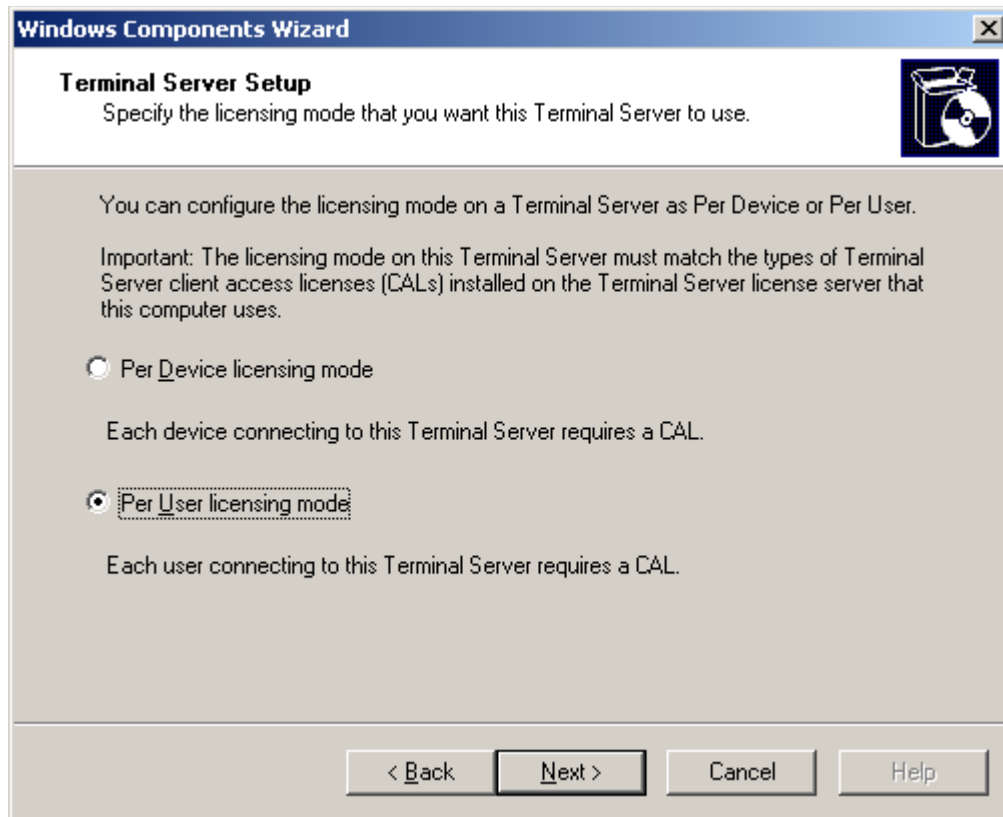
7. Click **Next** again.



8. Select the proper permission for remote user to access system resource on the Terminal Server machine. The default is **Full Security**. You may simply choose the default. Then click **Next**.



9. This setup assumes that a Terminal Server license server is installed somewhere within your network. Enter the server name where the Terminal Server license server is installed. You may enter multiple server names. You may also choose **Use automatically discovered license servers** to let Windows automatically locate a license server for you.
10. Click **Next**.



11. Select the Terminal Server licensing mode that is most suitable for your environment. Click **Next** and wait for the installation process to finish.

## ***Setting-up Users to Access Terminal Server Machine***

To enable users to remotely connect to the Terminal Server, they must belong to one of the following groups in the terminal server machine.

- **Administrators** group or,
- **Remote Desktop Users** group (This group is created when the Terminal Server is installed.)

---

# TERMINAL SERVER HARDWARE CONFIGURATIONS

Depending on the security policy of the company, you can choose one of the following Terminal Server hardware configurations:

- *All-in-One Tracker and Terminal Server* on page 8
- *Client-Server Tracker and Terminal Server* on page 9

## ***All-in-One Tracker and Terminal Server***

The following method describes the steps required to set up your Terminal Server on the Tracker Server machine.

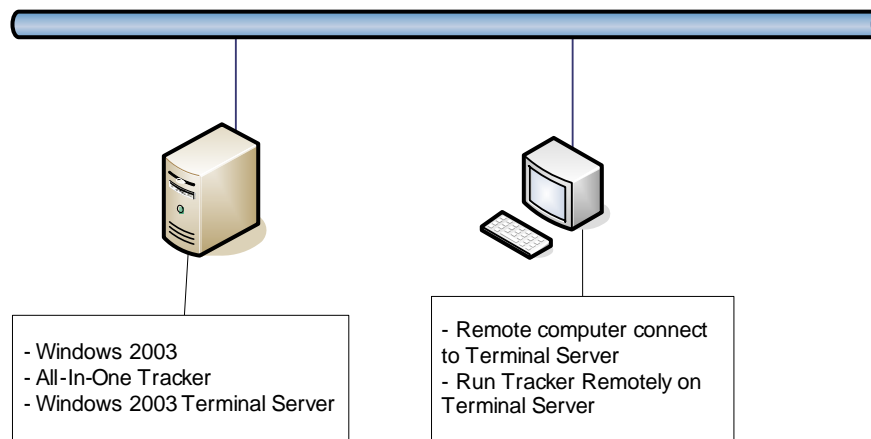
---

### **Method: Install Tracker and Terminal Server Together**

---

1. Install Windows 2003 Terminal Server on a Windows 2003 machine.
2. Add user U1 under the Remote Desktop Users group on this machine.
3. Install Tracker Server and Client on this same machine.
4. From a remote Windows XP machine, click **Start > Programs > Accessories > Communications > Remote Desktop Connection**.
5. Enter the name of the computer where you installed the Terminal Server in Step 1. Click **Connect**.
6. Login as user U1.  
You should now be connected to the Terminal Server machine where Tracker is installed.
7. Launch Tracker to make sure you can work with it.





## ***Client-Server Tracker and Terminal Server***

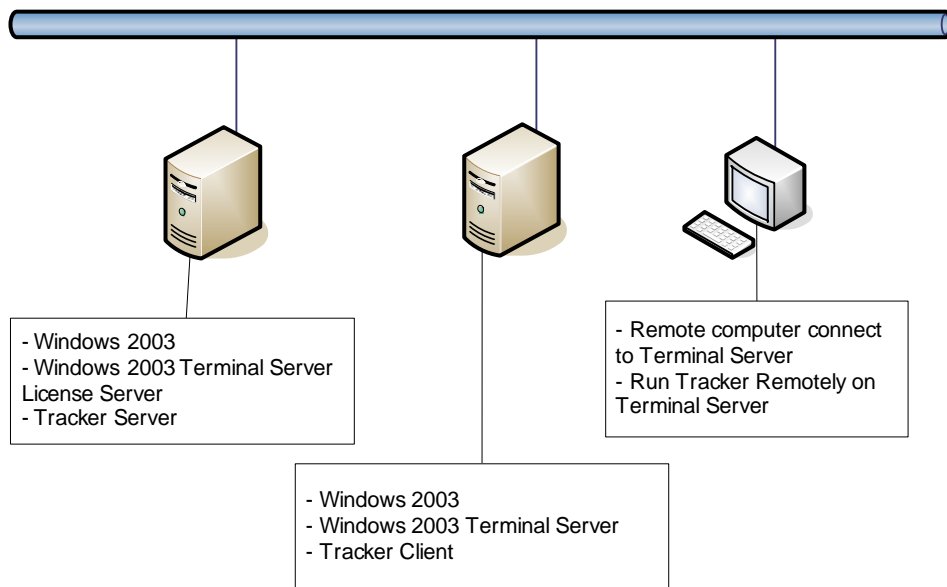
The following method describes the steps required to set up your Terminal Server on a separate machine with a Tracker Client.

---

### **Method: Install Client-Server Tracker and Terminal Server**

---

1. Install the Tracker Server on a machine running any supported version of Windows.
2. Install Windows 2003 Terminal Server and the Tracker client on a second machine running Windows 2003. On the Terminal Server, add user U1 under the Remote Desktop Users group.
3. From a third, remote machine running Windows XP, click **Start > Programs > Accessories > Communications > Remote Desktop Connection**.
4. Enter the name of the computer with the Terminal Server. Click **Connect**.
5. Login as user U1.  
You should now be connected to the Terminal Server.
6. Launch Tracker to make sure you can work with it.



## CONCLUSION

Tracker is tested to continue to function properly in a remote desktop session. It also works well even with multiple users remotely connecting to the terminal server and running Tracker concurrently. Besides the setup for Windows 2003 Terminal Server and Terminal Server License server, there is no extra setup required for Tracker application to run under a remote desktop connection.

