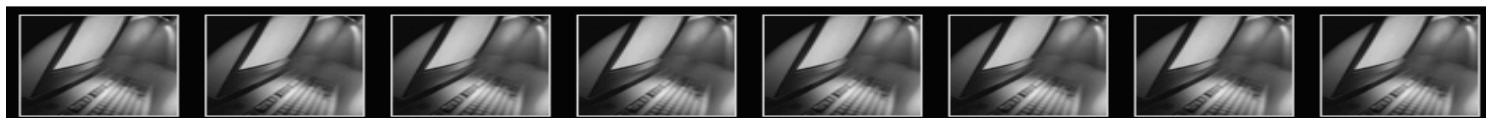


OIPA System Information Properties

Oracle® Insurance Policy Administration - Life
Release 8.1
E14444-01
May 2009



Oracle® Insurance Policy Administration Release V8.1

Copyright© 2009, Oracle. All rights reserved.

License Restrictions & Warranty Disclaimer

The Programs (which include both the software and documentation) contain proprietary information; they are provided under a license agreement containing restrictions on use and disclosure and are also protected by copyright, patent, and other intellectual and industrial property laws. Reverse engineering, disassembly, or decompilation of the Programs, except to the extent required to obtain interoperability with other independently created software or as specified by law, is prohibited.

The information contained in this document is subject to change without notice. If you find any problems in the documentation, please report them to us in writing. This document is not warranted to be error-free. Except as may be expressly permitted in your license agreement for these Programs, no part of these Programs may be reproduced or transmitted in any form or by any means, electronic or mechanical, for any purpose.

Restricted Rights Notice

U.S. GOVERNMENT RIGHTS

Programs, software, databases, and related documentation and technical data delivered to U.S. Government customers are "commercial computer software" or "commercial technical data" pursuant to the applicable Federal Acquisition Regulation and agency-specific supplemental regulations. As such, use, duplication, disclosure, modification, and adaptation of the Programs, including documentation and technical data, shall be subject to the licensing restrictions set forth in the applicable Oracle license agreement, and, to the extent applicable, the additional rights set forth in FAR 52.227-19, Commercial Computer Software--Restricted Rights (June 1987). Oracle USA, Inc., 500 Oracle Parkway, Redwood City, CA 94065.

The Programs are not intended for use in any nuclear, aviation, mass transit, medical, or other inherently dangerous applications. It shall be the licensee's responsibility to take all appropriate fail-safe, backup, redundancy and other measures to ensure the safe use of such applications if the Programs are used for such purposes, and we disclaim liability for any damages caused by such use of the Programs.

Third Party Web Sites, Content, Products, and Services Disclaimer

The Programs may provide links to Web sites and access to content, products, and services from third parties. Oracle is not responsible for the availability of, or any content provided on, third-party Web sites. You bear all risks associated with the use of such content. If you choose to purchase any products or services from a third party, the relationship is directly between you and the third party. Oracle is not responsible for: (a) the quality of third-party products or services; or (b) fulfilling any of the terms of the agreement with the third party, including delivery of products or services and warranty obligations related to purchased products or services. Oracle is not responsible for any loss or damage of any sort that you may incur from dealing with any third party.

Trademark Notice

Oracle, JD Edwards, and PeopleSoft are registered trademarks of Oracle Corporation and/or its affiliates. Other names may be trademarks of their respective owners.

Introduction

The SystemInformation.PROPERTIES file is used to control specific functionality in the Oracle Insurance Policy Administration application. This file contains specific functions and values. You will need to insert the proper values in this document for the application to function as desired.

Note: The # symbol comments a line out of the file.

Sample SystemInformation.PROPERTIES file	Description and Allowed Values
#Oracle Insurance Policy Admin System Information	Title of the document. No need to change.
SystemDate=02/21/2031	SystemDate value is the date that will be the start system date in OIPA. This date will be incremented every time cycle runs. If cycle doesn't run this will pull the current date of the system.
Environment=Development	Environment value can be anything you like. This indicates what environment you are in, for easy identification and readability. This sets no functionality in OIPA.
#DataBase=Oracle #DataBase=DB2 DataBase=SqlServer	This indicates the type of database that is being used. You should only have one database listed and make sure it is not commented out with the # symbol.
UploadedFilesPath=c:\\development\\Reports\\UploadedFiles\\	UploadedFilesPath value should be the directory path where an uploaded file is placed. This is primarily where reports are uploaded.
ReportsFilePath=c:\\development\\Reports\\ ConcurrentCrystalConnectionsAllowed=5 SMTPServer=ADMINMAIL.ADMINSERVER.COM ReportFromEmailAddress=test@adminserver.com	ReportsFilePath value should be the directory path where reports are stored after they are generated. ConcurrentCrystalConnectionsAllowed value is the number of concurrent Crystal connections that can run at one time to generate reports. This is a license requirement by Crystal. If running cycle, the system will wait for an available connection according to the limit set here. SMTPServer value is the mail server for outgoing mail. ReportFromEmailAddress value is the from email address for reports.
ScriptBlockMaxSize=45000 ScriptOptimizationLevel=5	ScriptBlockMaxSize=45000 is not recommended to change. This value relates to Math compilation. The size of the file is based on the size of the optimization. ScriptOptimizationLevel=5 is not recommended to change. This value relates to Math compilation. The size of the file is based on the size of the optimization.

<p>cache.CacheProvider=com.adminserver.utl.cache.MapCacheProviderUtl</p> <p>cache.CacheExecutables=No</p> <p>cache.CacheBusinessRules=No</p>	<p>cache.CacheProvider=com.adminserver.utl.cache.MapCacheProviderUtl provides increased performance and should not be changed unless told otherwise.</p> <p>cache.CacheExecutables value is either Yes or No. If Yes, classes will be compiled and configuration pieces such as CalcGeneral. This will increase performance because it decreases calls to the database and everything is stored in memory.</p> <p>cache.CacheBusinessRules value is either Yes or No. If Yes, the rules and transactions are cached. This reduces calls to the database for increased performance.</p>
<p>scripting.janino.enableDebugging = Yes</p> <p>scripting.janino.debug.EngineVariables = Yes</p> <p>scripting.janino.debug.EngineSource = No</p> <p>scripting.janino.debug.EngineMath = No</p>	<p>scripting.janino.enableDebugging value must be set to Yes for the options below to function. This indicates what is written out for debugging purposes. All data is written to the log file.</p> <p>scripting.janino.debug.EngineVariables value is either Yes or No. If Yes, this will write engine variables that include MathVariables and Fields to the LOG file when LOG="YES" in the configuration.</p> <p>scripting.janino.debug.EngineSource value is either Yes or No. If Yes, the engine source will write the actual compiled Java code.</p> <p>scripting.janino.debug.EngineMath value is either Yes or No. If Yes, and if the <MathVariables DEBUGSCRIPT=""> tag is used. It will write all the values for Fields and MathVariables and store them in AsEngineMath table in the database on an error.</p>
<p>scripting.janino.enableReporting = No</p> <p>scripting.janino.report.CalculationTime = No</p> <p>scripting.janino.report.FunctionTime = No</p> <p>scripting.janino.report.FunctionParameters = No</p> <p>scripting.janino.report.MathValue = No</p> <p>scripting.janino.report.MathTime = No</p>	<p>scripting.janino.enableReporting value must be set to Yes for the options below to function. This identifies what values will be written to analyze performance time.</p> <p>scripting.janino.report.CalculationTime value is Yes or No. If Yes, it will write how long it takes for all the calculations to process.</p> <p>scripting.janino.report.FunctionTime value is Yes or No. If Yes, it will write how long it takes for all the functions to process.</p> <p>scripting.janino.report.FunctionParameters value is either Yes or No. If Yes, it will write out all the function parameter values.</p> <p>scripting.janino.report.MathValue value is either Yes or No. If Yes, it will write all the values for the Math configuration.</p> <p>scripting.janino.report.MathTime value is either Yes or No. If Yes, it writes the time it takes for the entire Math configuration to execute.</p>

<p>#RepositoryServer=Internal</p> <p>IvsSourceControl=false</p> <p>IvsEnvironment=SIT</p> <p>IvsTrack=1</p>	<p>RepositoryServer=Internal must be present if using IVS. It must be commented out if you are not using IVS and IVSSourceControl=false.</p> <p>IvsSourceControl value is either true or false. If you are using IVS then the value should be true.</p> <p>IvsEnvironment value is the environment that should be updated with new versions. Use the character identification.</p> <p>IvsTrack value is the track that should be updated with new versions. The value is always a number.</p>
<p>EnablePlanGrouping=True</p>	<p>EnablePlanGrouping value is either True or False. If True, the use of Plan Groups in OIPA is on. If False, the use of Plan Groups in OIPA is off.</p>
<p>#Cycle Information</p> <p>services.cycle=Yes</p> <p>services.scheduledvaluation=Yes</p> <p>doSpawnActivities=Yes</p>	<p>Cycle and scheduled valuation run off of a notification utility and needs to be started. When the app starts, it looks for the corresponding properties file and pulls the name of the notification utility from the file and starts the service using that name. This is used for threading of cycle and scheduled valuation for increased performance.</p> <p>services.cycle value is Yes or No. If Yes, cycle will start up as a service.</p> <p>services.scheduledvaluation= value is Yes or No. If Yes,scheduledvaluation will start up as a service.</p> <p>doSpawnActivities value is Yes or No. Yes allows spawned activities to be processed by cycle or by hitting the Process button. No will not allow spawned activities to process.</p>
<p>INTEGRATION.USER=username</p>	<p>INTEGRATION.USER defines Username used to login from external source for items such as AsFile.</p>