

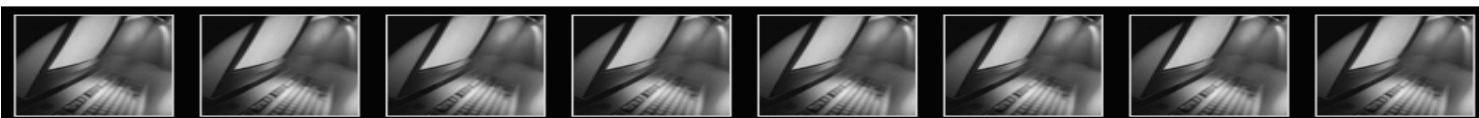
IVS Explorer User's Guide

Oracle Insurance Policy Administration - Life

Release 8.1

E14444-01

May 2009



Oracle® Insurance Policy Administration - Life Release V8.1

Copyright© 2009, Oracle. All rights reserved.

License Restrictions & Warranty Disclaimer

The Programs (which include both the software and documentation) contain proprietary information; they are provided under a license agreement containing restrictions on use and disclosure and are also protected by copyright, patent, and other intellectual and industrial property laws. Reverse engineering, disassembly, or decompilation of the Programs, except to the extent required to obtain interoperability with other independently created software or as specified by law, is prohibited.

The information contained in this document is subject to change without notice. If you find any problems in the documentation, please report them to us in writing. This document is not warranted to be error-free. Except as may be expressly permitted in your license agreement for these Programs, no part of these Programs may be reproduced or transmitted in any form or by any means, electronic or mechanical, for any purpose.

Restricted Rights Notice

U.S. GOVERNMENT RIGHTS

Programs, software, databases, and related documentation and technical data delivered to U.S. Government customers are "commercial computer software" or "commercial technical data" pursuant to the applicable Federal Acquisition Regulation and agency-specific supplemental regulations. As such, use, duplication, disclosure, modification, and adaptation of the Programs, including documentation and technical data, shall be subject to the licensing restrictions set forth in the applicable Oracle license agreement, and, to the extent applicable, the additional rights set forth in FAR 52.227-19, Commercial Computer Software--Restricted Rights (June 1987). Oracle USA, Inc., 500 Oracle Parkway, Redwood City, CA 94065.

The Programs are not intended for use in any nuclear, aviation, mass transit, medical, or other inherently dangerous applications. It shall be the licensee's responsibility to take all appropriate fail-safe, backup, redundancy and other measures to ensure the safe use of such applications if the Programs are used for such purposes, and we disclaim liability for any damages caused by such use of the Programs.

Third Party Web Sites, Content, Products, and Services Disclaimer

The Programs may provide links to Web sites and access to content, products, and services from third parties. Oracle is not responsible for the availability of, or any content provided on, third-party Web sites. You bear all risks associated with the use of such content. If you choose to purchase any products or services from a third party, the relationship is directly between you and the third party. Oracle is not responsible for: (a) the quality of third-party products or services; or (b) fulfilling any of the terms of the agreement with the third party, including delivery of products or services and warranty obligations related to purchased products or services. Oracle is not responsible for any loss or damage of any sort that you may incur from dealing with any third party.

Trademark Notice

Oracle, JD Edwards, and PeopleSoft are registered trademarks of Oracle Corporation and/or its affiliates. Other names may be trademarks of their respective owners.

Table of Contents

IVS EXPLORER TOOL.....	4
OVERVIEW	4
INSTALLATION	4
GETTING STARTED.....	6
NAVIGATING IVS	6
<i>The Menu Bar</i>	6
<i>Selection and Filtering Area</i>	7
<i>Versioned Rule Area</i>	8
SET-UP DATA SOURCES.....	10
OPTION TO VIEW DESCRIPTIVE NAMES INSTEAD OF GUIDS	11
VIEW VERSIONED HISTORY RECORDS	13
VIEW VERSION INFORMATION	15
SECTIONS OF VERSION INFORMATION	15
VIEW A COMPARE OF TWO VERSIONED RULES	17
BEYOND COMPARE	17

IVS Explorer Tool

Overview

The IVS Explorer tool is a standalone application that allows you to visually view and filter versioned rules in an IVS database. This eliminates the need to write complex SQL statements to view rule versions, environment and track information. It provides an easy way to track versioning and view a history of modified rules in various environments. This tool is useful prior to a migration because it allows you to view what should and should not be moved.

Another feature of the IVS Explorer is the ability to perform side by side comparisons of versioned rules' information and XML. This comparison allows for the quick identification of discrepancies.

The IVS Explorer tool reads directly from the database for the version types. It is completely dynamic so if a rule was versioned in the database it will automatically be reflected in the IVS Explorer tool. It is not necessary to reload the database into the IVS Explorer tool.

Installation

Use the following steps to install the IVS Explorer. A .zip file that includes the executable file is provided by Oracle Corp.

Steps to Install IVS Explorer

1. Double-click the **ivs-win-setup.exe** file and the IVS Explorer Setup Wizard will open.
2. Select the **Next** button.
3. Either keep the default destination folder that is populated or locate a different destination using the **Browse** button.
4. Select the **Next** button.
5. Either keep the default Start Menu location for the IVS Explorer or select a different one using the list of Start Menu folders.
6. Select **Install** button.
7. After the installation has completed, select **Next**.
8. Select **Finish**.
9. Download and save the following **required** .jar files in the **IVSExplorer\lib** folder.
 - **xpp3-1.1.3.4.jar** - <http://www.extreme.indiana.edu/dist/java-repository/xpp3/jars/>
 - **rowset.jar** - http://java.sun.com/products/jdbc/download.html#rowsetcobundle1_0
10. Download and save the following **database dependent** .jar files in the **IVSExplorer \lib** folder.
 - a. **DB2 jar files:** *These files are included with the purchase of the DB2 software. They are not available for download. Contact your IT department for assistance.*
 - **db2jcc_license_cu.jar**
 - **db2jcc.jar**

- b. **SQL Server**
 - **jtds-1.2.2.jar** - <http://sourceforge.net/projects/jtds/>
- c. **Harvest Connection**
 - **N/A**
- d. **JDBC**
 - **N/A**

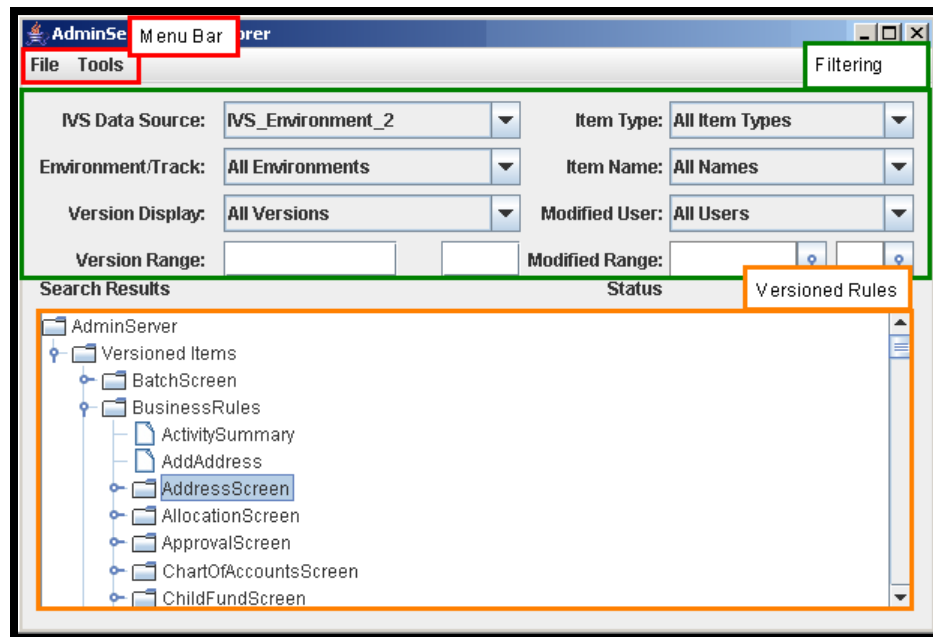
Once the jars are added to the lib directory start the **IVS Explorer** tool. Connecting to a database will verify that the correct .jars were added.

Getting Started

Navigating IVS

The IVS Explorer consists of three major areas:

1. The Menu Bar
2. Selection and Filtering Area
3. Versioned Rules Area



IVS Explorer interface

The Menu Bar

The menu bar stores IVS Explorer functionality.

File Menu

- **Manage Data Sources:** This function allows you to **Add**, **Modify** and **Remove** IVS data sources that you want to view version information. Data sources are databases that you have set-up a connection to in the IVS Explorer Tool. You may also test any of your data source connectivity with the **Test Data Source** button from this window.
- **Close:** Closes the IVS Explorer Tool.



Tools

The **Tools** menu only has the **Plugins>PAS Plugin Settings** selection. Using this option

allows you to select an OIPA database that matches the IVS database you are using. By making this match the IVS Explorer will display the descriptive names of rules instead of displaying the GUID. Viewing descriptive names drastically improves readability of versioned rules.



Selection and Filtering Area

The **Selection and Filtering Area** is where you select the IVS data source you would like to view. You may select various filters after you select the IVS data source to limit what rules are displayed in the Versioned Rules section.

Selection and Filter Descriptions:

Field	Description
IVS Data Source	Select the data source you would like to view. The data source must be set first via File>Manage Data Sources.
Environment/Track	Select a specific environment and track of rules you want to view.
Version Display	Select whether you want to view all versions of rules or just the current version.
Version Range	You may enter an integer range for versions you would like to view.
Item Type*	Listed are the item(rule) types that are viewable through the tool. You may select one to only see that item type.
Item Nam	Listed are specific items(rules) according to what is selected in the Item Type field. You may select one to only see that item.
Modified User	Select a user name and only the rules that where last modified by the individual will be displayed.
Modified Range	Enter a date range and only rules that where modified in between the dates will be displayed.

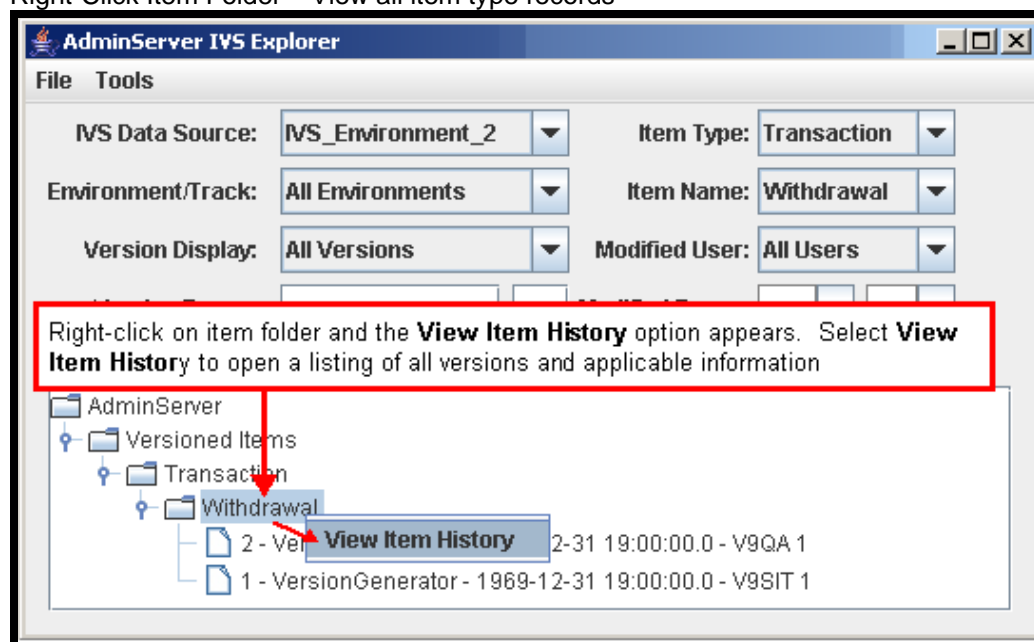
Note: Items types are the groups of rules that can be viewed through this tool.

Versioned Rule Area

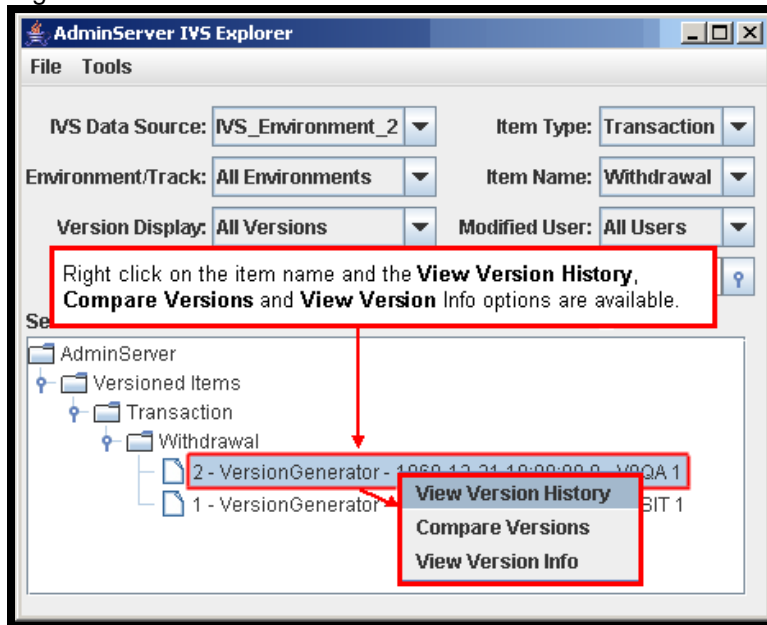
This area is an explorer view of the rules according to what is selected in the Selection and Filtering Area. You may expand and collapse the hierarchal folder structure to explore the various rules. Rules do not load until their respective folder is expanded to view. Filters are applied to any open folders in this area.

Each item type and item has its own folder. In each item's folder is a list of all the applicable versioned rules. You can right click on an item's folder and view the item history of all records in the folder. You can right click on the version record and view history of all records associated with just that version.

Right-Click Item Folder – View all item type records



Right-Click Item Name – View records associated with the same versionGUID.



Set-up Data Sources

Initially, you must set-up the **Data Sources** that you want to view through the IVS Explorer. In the IVS Explorer a **Data Source** is the required connectivity information to the IVS database you want to view versioned data from. The **Manage Data Source** window allows you to set-up **Data Sources**. You need to enter the connectivity information needed for the database(s) you would like to view. When using the IVS Explorer you will be required to select a **Data Source**

Steps to Add a Data Source:

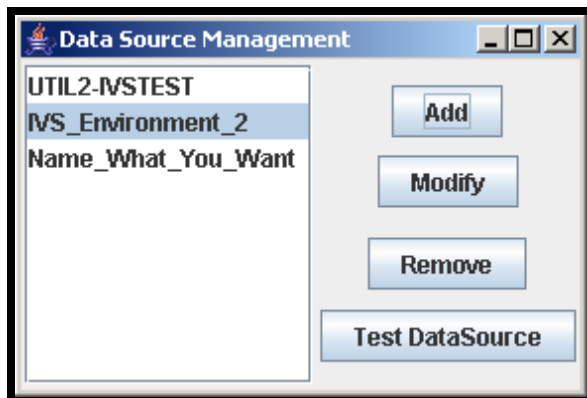
1. Select **Manage Data Source** from the **File** menu.
2. Select **Add** from the **Data Source Management** window.
3. Enter the following information:



- a. **Data Source Name:** You may enter any name to identify this particular IVS database. It is the name that you will use in the IVS Explorer when selecting the database to view. Do not use spaces.
- b. **Database Brand:** Select the type of database the data is stored with. The database brand will dictate the **Host Port**. The Command Center displays the commonly used host port next to the **Host Port** field in parenthesis according to the database brand selected.
- c. **Host Address:** Enter the web server name, IP address or the DNS name (as long as you are on a network that resolves DNS for databases) you want to connect to.
- d. **Host Port:** The **Host Port** depends on what database is used and should be in parenthesis based on your selection for the **Database Brand** field. Generally, Oracle host port is 1521, DB2 uses port 50000, and Microsoft SQL Server uses the host port 1433, but there may be situations where the port is different.
- e. **Database Name:** Enter the name of the database on the server you are connecting to.
- f. **Database User:** Enter the user ID needed to connect to the database.
Database Password: Enter the database password associated with the **Database Name**.
- g. **Database Schema:** Enter the name of the schema of the database.
4. Select **Test DataSource**. You will receive a pop-up indicating whether you successfully connected to the database.
Note: If you have issues connecting to the database verify information was entered correctly. Contact your DBA or individual who would be able to provide the database information.
5. Select the **OK** button.

The **Data Source** is now listed in the Data Source Management window and can be used. Other operations you may run are:

- **Add** - Add another data source.
- **Modify** - Modify existing data source information.
- **Remove** - Remove a source data source.
- **Test DataSource** - Test a data source's connectivity.



Option to View Descriptive Names instead of GUIDs

Because the IVS database does not have any descriptive names for items such as plan or transaction names, only the GUIDs are displayed. The **PAS Plug In** can be used to match up an OIPA database and an IVS database. This allows descriptive names to be extracted and viewed through the IVS Explorer instead of the GUIDs.

Steps to Set-up the PAS Plug In

1. Select **Tools** from the Menu bar.
2. Select **Plugins**.
3. Select **PAS Plugin Settings**.
4. Check the **Use PAS Name Plugin** box.
5. Select the IVS database that you want to associated with an OIPA database.
6. Select **Manage PAS DBs** button.
7. Select the appropriate Environment.
8. Select the **Modify** button.
9. Enter the Database Brand for the OIPA database.
10. Enter the **Host Address**: Enter the web server name, IP address or the DNS name (as long as you are on a network that resolves DNS for databases) you want to connect to.
11. Enter the **Host Port**: The **Host Port** depends on what database is used and should be in parenthesis based on your selection for the **Database Brand** field. Generally, Oracle host port is 1521, DB2 uses port 50000, and Microsoft SQL Server uses the host port 1433, but there may be situations where the port is different.

12. Enter the OIPA **Database Name**: Enter the name of the database on the server you are connecting to.
13. Enter the OIPA **Database User**: Enter the user ID needed to connect to the database.
14. Select the **Store Database** checkbox,
15. Enter the OIPA **Database Password**: Enter the database password associated with the OIPA **Database User** ID.
16. Enter the OIPA **Database Schema**: Enter the name of the schema of the database you are connecting to.
17. Select **Test DataSource**. You will receive a pop-up indicating whether you successfully connected to the database.

Note: If you have issues connecting to the database verify the information was entered correctly. Contact your DBA or individual who would be able to provide the database information.

18. Select **OK** button from the **Properties** window.
19. Select **Close** from the **IVS Environments** window.
20. Select **Close** from the **PAS Plugin** window.

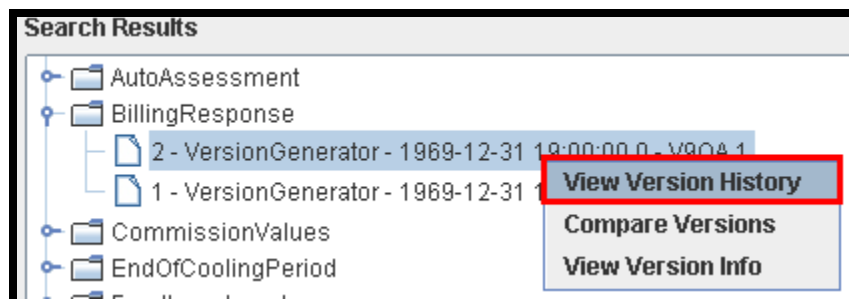
View Versioned History Records

Viewing versioned records can be done at either the item folder level or the item name level. At the item folder level you will see a history of all records that are in the folder. At the item name level you will only see records of that item that you select. Versioned records are the combination of the IVSVersion and IVSVersionHistory table.

Prior to selecting versioned records, you may select filters to limit the items listed in the [Selection Area](#).

Steps to View Version Records

1. Under **Search Results** use the folder structure to navigate to the appropriate item folder or actual item name(version).
2. Right click on the folder or actual item name(version).
3. Select **View Version History**.



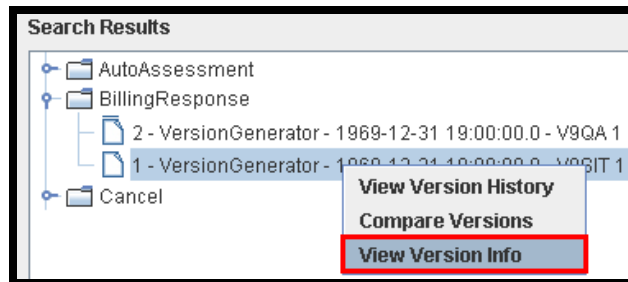
The IVS Explorer window opens and displays the following information:

Column	Description
VersionGUID	The unique identifier for a version.
RuleGUID	The rule GUID that you are viewing.
VersionNumber	Number that specifies the version. An incremental number. The higher the number the newer the version.
RuleTypeCode	What type of rule the record represents. For example, business rule, transaction, etc.
LastModifiedGMT	This is when the version was last modified.
Last ModifiedBy	This is who last modified the version.
Comment	Not used at this time.
Label	Not used at this time.
VersionHistoryGUID	Primary identifier of the version history table.
Environment	The IVS environment that the rule is in.
Track	The IVS track the rule is in.
ActionTypeCode	The type of action the rule is in. For example checked in, checked out, undo checkout. These action types are found in the IVS Code table. Each history record is an action

	performed on a rule and this indicates what action occurred.
LastModifiedBy	This is who last modified the version from the IVSVersionHistory.
LastModifiedGMT	This is when the version was last modified from the IVSVersionHistory.

View Version Information

You may view version information for any rule. Right click on the rule and select **View Version Info**. The **IVS Explorer Display** window opens and displays version information that can be copied and pasted into another application if necessary. The information is divided into three distinct sections; the Version Information, Item Information and XML Data .



Sections of Version Information

1. The first section houses the **Version Information**, which is the version and rule GUIDs, the actual number version of the rule, what type of rule and rule modification info.
2. The second section is the **Item Information**, which is specific to the type of item you are viewing. Item Information indicates what item and type you are viewing. Item types are Batch Screen, Business Rules, File, Inquiry Screen, Security Role, Segment Name and Transaction.
3. The third section is the **XML Data** and is the actual configuration of the XML rule.

IVS Explorer Display

Version Information: Version Information

VERSIONGUID: B889E3E8-8DA0-5829-0E05-98FC7C232BE2
 RULEGUID: 8995923F-5668-D3AB-9A68-E82A22180417
 VERSIONNUMBER: 2
 RULETYPECODE: 02
 LASTMODIFIEDBY: VersionGenerator
 LASTMODIFIEDGMT: 1969-12-31 19:00:00.0

Item Information: Item Information

TRANSACTIONGUID: 8995923F-5668-D3AB-9A68-E82A22180417
 PLANGUID: 6D56CEB3-9450-BCFF-A4AF-ADCB07FA063A
 TRANSACTIONNAME: BillingResponse
 STATUSCODE: 01
 TYPECODE: 01

XMLDATA: XML Data Starts Here

```
<Transaction>
  <EffectiveDate STATUS="Enabled" TYPE="SYSTEM"></EffectiveDate>
  <MultiFields RULE="MultiFields-BillingResponse">Yes</MultiFields>
  <Fields>
    <Field>
      <Name>BillBillPaymentStatusCode</Name>
      <Display>Bill Bill Payment Status Code</Display>
      <Query TYPE="SQL">SELECT CodeValue, $
```

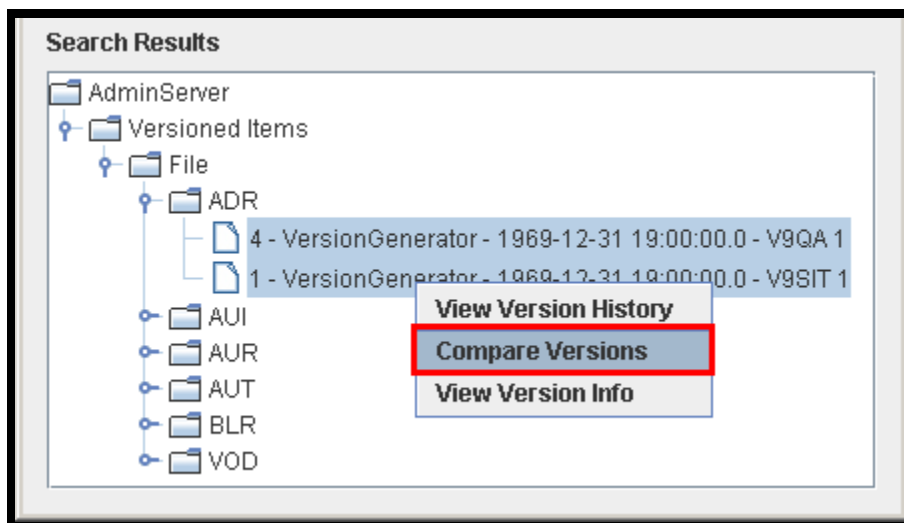
View Information opens the IVS Explorer Display window

View a Compare of Two Versioned Rules

IVS Explorer provides the ability to view two versioned rules side by side. Details on the [version information](#) provided in the comparison can be found in the previous section. You may only compare two rules and the application [Beyond Compare](#) must be loaded on your system. If you select more than two files or do not have Beyond Compare on your system you will receive an error.

Steps to Compare two Versioned Rules

1. Expand the appropriate folder to locate the rules to compare.
2. Select two rules by holding the **Ctrl** key and selecting the files with the mouse.
3. Right-click on highlighted selected rules.
4. Select **Compare Versions**.



Select two rules

Beyond Compare

Beyond Compare has been incorporated into the Migration Tool to offer a more detailed view when comparing data across environments. Beyond Compare can be downloaded from the web at www.scootersoftware.com.

Beyond Compare program executable must be saved at the following path:

C:\Program Files\Beyond Compare 2\BC2.exe

Note: Rules are cached so if you are viewing rules that have been changed while open, you must navigate out and back in to view the changes.