



Agile Product Lifecycle Management

Product Governance & Compliance Supplier Guide

v9.2.2.6

Part No. E14185-01

January 2009

Copyright and Trademarks

Copyright © 1995, 2009, Oracle. All rights reserved.

The Programs (which both the software and documentation) contain proprietary information; they are provided under a license agreement containing restrictions on use and disclosure and are also protected by copyright, patent, and other intellectual and industrial property laws. Reverse engineering, disassembly, or decompilation of the Programs, except to the extent required to obtain interoperability with other independently created software or as specified by law, is prohibited.

The information contained in this document is subject to change without notice. If you find any problems in the documentation, please report them to us in writing. This document is not warranted to be error-free. Except as may be expressly permitted in your license agreement for these Programs, no part of these Programs may be reproduced or transmitted in any form or by any means, electronic or mechanical, for any purpose.

Oracle Data Integrator can be used for initial Oracle Agile PLM source to Oracle Agile PLM Data Mart target synchronizations. Oracle Data Integrator can be used for subsequent bulk loads and batch data transfers from Oracle Agile PLM source to Oracle Agile PLM Data Mart target.

If the Programs are delivered to the United States Government or anyone licensing or using the Programs on behalf of the United States Government, the following notice is applicable:

U.S. GOVERNMENT RIGHTS Programs, software, databases, and related documentation and technical data delivered to U.S. Government customers are "commercial computer software" or "commercial technical data" pursuant to the applicable Federal Acquisition Regulation and agency-specific supplemental regulations. As such, use, duplication, disclosure, modification, and adaptation of the Programs, including documentation and technical data, shall be subject to the licensing restrictions set forth in the applicable Oracle license agreement, and, to the extent applicable, the additional rights set forth in FAR 52.227-19, Commercial Computer Software--Restricted Rights (June 1987). Oracle USA, Inc., 500 Oracle Parkway, Redwood City, CA 94065.

The Programs are not intended for use in any nuclear, aviation, mass transit, medical, or other inherently dangerous applications. It shall be the licensee's responsibility to take all appropriate fail-safe, backup, redundancy and other measures to ensure the safe use of such applications if the Programs are used for such purposes, and we disclaim liability for any damages caused by such use of the Programs.

Oracle and Agile are registered trademarks of Oracle Corporation and/or its affiliates. Other names may be trademarks of their respective owners.

The Programs may provide links to Web sites and access to content, products, and services from third parties. Oracle is not responsible for the availability of, or any content provided on, third-party Web sites. You bear all risks associated with the use of such content. If you choose to purchase any products or services from a third party, the relationship is directly between you and the third party. Oracle is not responsible for: (a) the quality of third-party products or services; or (b) fulfilling any of the terms of the agreement with the third party, including delivery of products or services and warranty obligations related to purchased products or services. Oracle is not responsible for any loss or damage of any sort that you may incur from dealing with any third party.

CONTENTS

Copyright and Trademarks	ii
Introduction to Agile PG&C.....	1
About Agile Product Governance & Compliance	1
Compliance Regulations.....	2
How PG&C Gathers and Manages Compliance Data.....	2
Agile PLM Documentation for PG&C	3
PG&C User Guide	3
Microsoft Excel-based Client.....	3
Minimum Requirements for Microsoft Excel-based Client.....	4
RFI Process and Agile Classes	5
Requests For Information	5
RFI Sequence	5
PG&C Business Objects	6
Substances.....	6
Specifications	7
Parts and Part Groups.....	7
Declarations	8
Using Agile Web Client.....	9
Introducing Agile Web Client	9
Logging In to Web Client	9
Main Toolbar	10
Printing Declarations	11
Left Pane Links.....	11
Open Declaration Links	11
Changing Your User Profile.....	12
User Properties Defined	13
Responding to Agile Compliance RFIs	15
Filling Out a Declaration	16
Notifications when Declarations Advance to and from Supplier	16
Information Supplier Fills Out a Declaration.....	16

Process Sequences in Declaration Fulfillment	17
About Declaration Classes and Fields	18
More About the Declarations Classes	18
Significant Attributes in Declarations	20
Substance Editing.....	23
Importing and Exporting Declarations	24
Process Extensions for JGPSSI Declarations	25
Working with Microsoft Excel-based Client	27
Notes on Excel-based Declaration Submissions.....	27

Preface

The Oracle|Agile documentation set includes Adobe® Acrobat™ PDF files. The [Oracle Technology Network \(OTN\) Web site](http://www.oracle.com/technology/documentation/agile.html) <http://www.oracle.com/technology/documentation/agile.html> contains the latest versions of the Oracle|Agile PLM PDF files. You can view or download these manuals from the Web site, or you can ask your Agile administrator if there is an Oracle|Agile Documentation folder available on your network from which you can access the Oracle|Agile documentation (PDF) files.

Note To read the PDF files, you must use the free Adobe Acrobat Reader™ version 7.0 or later. This program can be downloaded from the [Adobe Web site](http://www.adobe.com) <http://www.adobe.com>.

The [Oracle Technology Network \(OTN\) Web site](http://www.oracle.com/technology/documentation/agile.html) <http://www.oracle.com/technology/documentation/agile.html> can be accessed through Help > Manuals in both the Agile Web Client and the Agile Java Client. If you need additional assistance or information, please contact [support](http://www.oracle.com/agile/support.html) <http://www.oracle.com/agile/support.html> (<http://www.oracle.com/agile/support.html>) for assistance.

Note Before calling Agile Support about a problem with an Oracle|Agile PLM manual, please have the full part number, which is located on the title page.

TTY Access to Oracle Support Services

Oracle provides dedicated Text Telephone (TTY) access to Oracle Support Services within the United States of America 24 hours a day, 7 days a week. For TTY support, call 800.446.2398. Outside the United States, call +1.407.458.2479.

Documentation Accessibility

Our goal is to make Oracle products, services, and supporting documentation accessible, with good usability, to the disabled community. To that end, our documentation includes features that make information available to users of assistive technology. This documentation is available in HTML format, and contains markup to facilitate access by the disabled community. Accessibility standards will continue to evolve over time, and Oracle is actively engaged with other market-leading technology vendors to address technical obstacles so that our documentation can be accessible to all of our customers. For more information, visit the Oracle Accessibility Program Web site at <http://globaldc.oracle.com/perl/twiki/view/AccessibilityProgram/WebHome> <http://www..>

Readme

Any last-minute information about Oracle|Agile PLM can be found in the Readme file on the [Oracle Technology Network \(OTN\) Web site](http://www.oracle.com/technology/documentation/agile.html) <http://www.oracle.com/technology/documentation/agile.html>

Agile Training Aids

Go to the [Oracle University Web page](http://www.oracle.com/education/chooser/selectcountry_new.html)

http://www.oracle.com/education/chooser/selectcountry_new.html for more information on Agile Training offerings.

Accessibility of Code Examples in Documentation

Screen readers may not always correctly read the code examples in this document. The conventions for writing code require that closing braces should appear on an otherwise empty line; however, some screen readers may not always read a line of text that consists solely of a bracket or brace.

Accessibility of Links to External Web Sites in Documentation

This documentation may contain links to Web sites of other companies or organizations that Oracle does not own or control. Oracle neither evaluates nor makes any representations regarding the accessibility of these Web sites.

Introduction to Agile PG&C

This chapter includes the following:

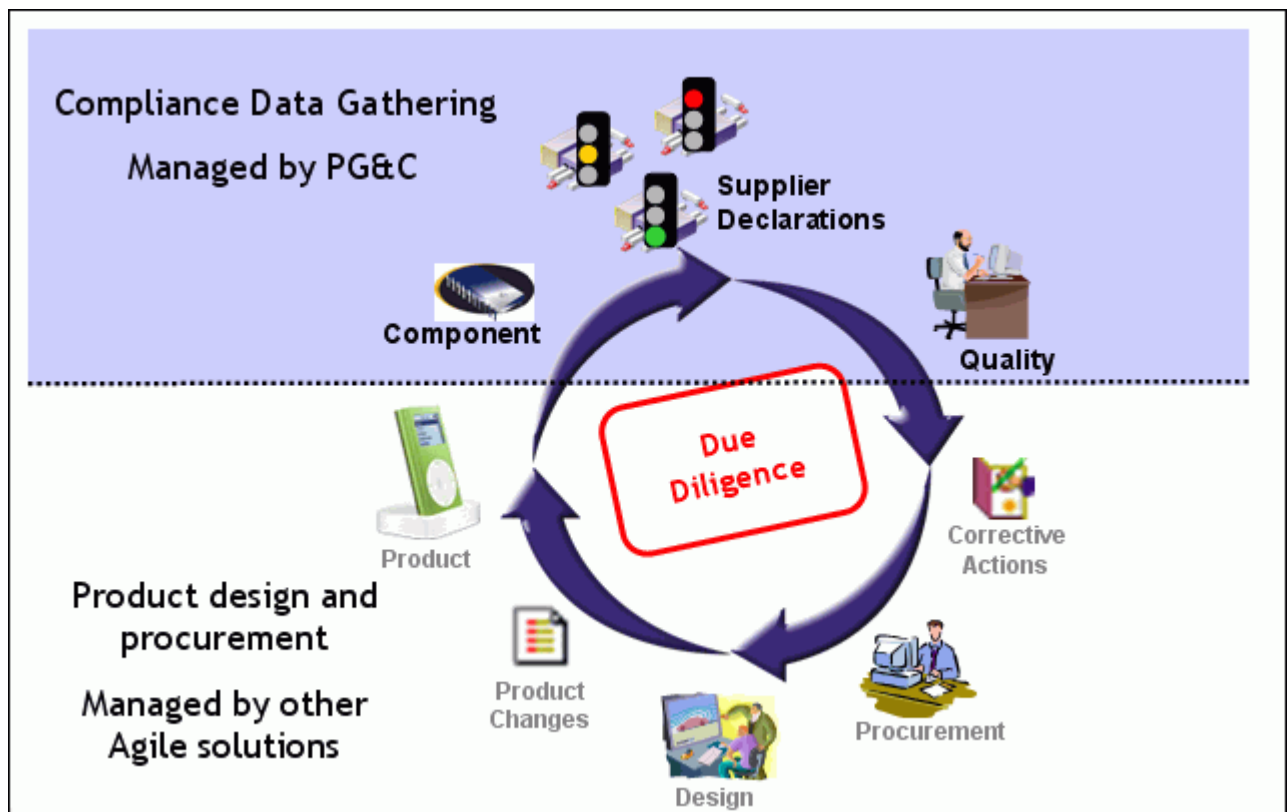
▪ About Agile Product Governance & Compliance	1
▪ How PG&C Gathers and Manages Compliance Data	2
▪ Agile PLM Documentation for PG&C.....	3
▪ Microsoft Excel-based Client	3

About Agile Product Governance & Compliance

Agile Product Governance & Compliance (PG&C) is designed to help manufacturers audit the presence and amount of regulated substances used in their products, and to demonstrate that they responsibly dispose of, recycle, or re-use parts containing those substances.

This figure depicts a standard cycle of procurement and manufacturing. Other Agile solutions – Product Quality Management, Product Cost Management, Product Portfolio Management, Product Collaboration – manage areas around the lower half of the cycle. Product Governance and Compliance manages the compliance data-gathering area.

Figure 1-1: Closed-Loop Compliance–Corrective Action Process



Compliance Regulations

OEM manufacturers are required to take global responsibility to dispose of, recycle, or re-use electronics that contain hazardous substances. In addition to satisfying FDA regulations and ISO standards, any company that sells electronics equipment in an international market is subject to the OEM manufacturing regulations of their target markets.

How PG&C Gathers and Manages Compliance Data

Agile PG&C is a communication vehicle between the compliance manager and suppliers. People who manage the compliance process at the “buyer” site – compliance managers – must ensure that their company’s products adhere to government regulations and company policy.

More specifically, compliance managers use PG&C to:

- Collect data about materials used to manufacture a product
- Analyze those data to determine compliance with re-use, recycling, and restriction targets
- Collect compliance information on the various regulations (part-level compliance information)
- Collect manufacturing process information on parts

- Generate reports to show the level of compliance
- Manage supporting documentation, such as descriptions of current regulations, recovery manifests, disposal certificates of destruction, supplier compliance surveys, and other customer-specific specifications.

Agile PLM Documentation for PG&C

The Preface of this manual provides the URL to Agile documentation for current releases of Agile PLM.

This manual, *Agile PG&C Supplier Guide*, provides information for you to learn to work in Agile Web Client and to complete your end of the compliance process.

A supplier in the PG&C solution is a company that provides compliance information about parts that are used in a buyer company's manufacturing process. The Agile administrator at the buyer company has created Agile users, which have been called "contact users" and are now referred to as "declaration recipients" in the PG&C framework.

The compliance manager at the buyer company creates declarations that are sent to the supplier's declaration recipients. In turn, declaration recipients complete declaration requests from the buyer.

The chapters and main topics in this manual are:

- [RFI Process and Agile Classes](#) (on page 5):
 - [Requests For Information](#) (on page 5)
 - [PG&C Business Objects](#) (on page 6)
- [Using Agile Web Client](#) (on page 9):
 - [Introducing Agile Web Client](#) (on page 9)
 - [Changing Your User Profile](#) (on page 12)
- [Responding to Agile Compliance RFIs](#) (on page 15):
 - [Filling Out a Declaration](#) (on page 16)
 - [About Declaration Classes and Fields](#) (on page 18)
 - [Importing and Exporting Declarations](#) (on page 24)
 - [Working with Microsoft Excel-based Client](#) (on page 27)

PG&C User Guide

The *Agile PG&C User Guide* is the manual for working in the PG&C solution on the buyer side. It describes the PG&C-specific business classes in depth, as well as compliance rollups and other features. In some cases, the manager of Agile-based compliance work at your firm might find value referring to the *User Guide*.

Microsoft Excel-based Client

You may want to complete declaration requests entirely within the Agile environment, as described in this manual. It is also possible to complete declarations in other environments by exporting data

from and importing data to Agile. Also, a Microsoft Excel-based Client is another means of simplified compliance fulfillment.

If your company has been configured to use this client, you will need to access it via Agile Web Client the first time.

Note	Some companies do not permit their employees to download ActiveX controls to their desktop computers. Therefore, the Microsoft Excel-based Client may have to be implemented by the IT department of your company via a “push approach”: this automatically pushes the ActiveX control out to users’ desktops. In any case, you may need to work with your IT department to integrate the Excel-based Client.
------	---

The Microsoft Excel-based Client functionality allows you to open companion spreadsheets in Microsoft Excel, connect to an Agile PLM system, download information, fill out required information, run local validations and calculations, and upload the information directly into Agile PG&C.

- Use Case 1: Using the JGPSSI spreadsheet template, upload information to Agile PG&C after validation.
- Use Case 2: Using the Agile Excel Integration Framework, you can create Excel-based integration for any of the declarations; contact your Agile representative.

Minimum Requirements for Microsoft Excel-based Client

Microsoft Excel-based clients for Agile PG&C require the following client-side software. These requirements have likely been satisfied by the time you are called on to fulfill Agile declarations.

Operating System

- Windows 2000 Pro SPX or Windows XP Pro SP2

Client Applications

- Microsoft Excel 2000, Microsoft Excel XP, or Microsoft Excel 2003
- Microsoft Internet Explorer 5.5 or 6.0

RFI Process and Agile Classes

This chapter includes the following:

- Requests For Information 5
- PG&C Business Objects..... 6

As an information provider (“supplier”) to a manufacturer (“buyer”) who is seeking compliance information via Agile PG&C, this manual is your user handbook.

Your company may or may not actually manufacture specific parts that go into the products of an OEM; in any case, your company does provide compliance information about parts to this manufacturer.

Requests For Information

At the supplier site, information providers use PG&C to complete and sign off on Declarations – the vehicle of Requests For Information (RFIs):

- Declare compliance with specifications concerning hazardous materials;
- Disclose which hazardous substances are contained in the components and subassemblies it provides or is authorized to provide data or other disclosure information.

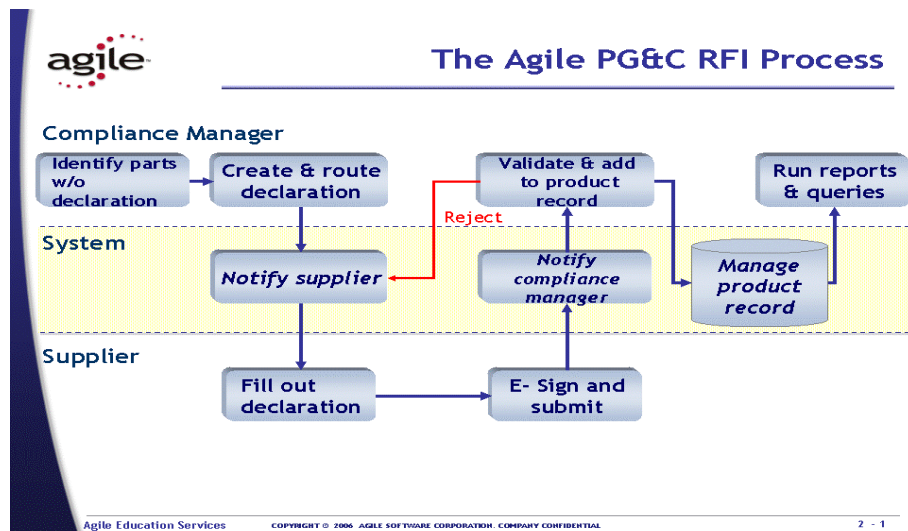
A declaration keeps track of the compliance information about substances and materials contained in parts or part groups that are named in the declaration. The Default Declaration Workflow conveys RFIs from your buyers. Agile PLM Release 9.2.2 also makes it possible to send customized Declaration workflows to suppliers.

RFI Sequence

The general sequence of the RFI process follows. The supplier is involved in step 5 only; the other steps take place at the buyer company.

1. Identify parts and part groups for which compliance data is required.
2. Identify people within buyer company and suppliers (for manufacturer parts) who can provide compliance data.
3. Create declarations for parts, manufacturer parts, and part groups.
4. Route a declaration to an information supplier.
5. Supplier completes the declaration with data and a signoff.
6. Compliance data is assessed for completeness and validated for correctness.
7. Reviewed and approved declarations are released, which “publishes” the data across the product record in PLM.

The RFI process is depicted in the graphic below.



PG&C Business Objects

The PG&C solution offers configurable business objects called Substances, Specifications, Declarations, and Part Groups. Items and Manufacturer Parts (from Agile Product Collaboration) are also integral to the solution.

Note	It is possible that your buyer's Agile administrator has renamed existing classes and created new subclasses than those presented in this guide.
------	--

Here are brief definitions of the PG&C business objects.

Substances

Substances are basic building blocks in PG&C. A substance is any chemical element or compound that is tracked within Agile PLM. There are four kinds of substances, which cover a variety of circumstances: Substances, Substance Groups, Materials, and Subparts.

- Subparts class – a subpart is a subunit of a component. Subparts are not numbered and do not expand the BOM.
- Materials class – a material is a compound chemical, that is, a substance consisting of multiple substances. A good example of a material is a glue or a resin that can be bought in bulk.
- Substance Groups class – a group of multiple substances. A substance group must have a Base Substance, which is the substance that the legislation is interested in. A substance group called “Lead and Lead Compounds” would cite Lead as its base substance, and it could comprise chemicals like Lead-oxide, Lead-nitrate, and Lead-sulfate.
- Substances class – a substance is a single chemical element; for example, lead, chromium, or cadmium. Generally, these are the potentially hazardous substances that legislations are interested in, as described in specifications. The new Alias attribute facilitates possible inconsistencies in how substances are named by the supplier.

Substance Aliasing

The Alias attribute is provided to inform the PG&C system of “substitute names” of substances and substance groups. For example, an alias for Lead could be the chemical notation “Pb”. The buyer’s system can then resolve confusion if you, the supplier, submit information for a substance that you call Pb but they call Lead.

If the name of a substance/substance group that you provide (in the declaration) does not exist in the buyer’s system (and it is not already an alias for another substance), the buyer can add it as an alias for the intended substance/SG.

This makes it easier for you to use names of substances and substance groups in your declaration responses according to your conventions without concern that a name may be different in the buyer’s system.

Specifications

Specifications track the different legislations, customer specifications, or internal specifications with which an assembly or part must comply. The Specifications object is used to create representations of specification documents, regulations, published compliance criteria.

An example of a regulation issued by a government body is the European RoHS directive. Environmental specifications are substance-based, and contain a list of banned substances or substances of concern and their threshold values.

In Agile, specifications are used to validate declarations and assess the compliance of parts by evaluating whether a given restricted substance in the composition of a part surpasses its specified threshold value.

Parts and Part Groups

Items and Manufacturer Parts can be referred to generally as “parts.” The phrase “parts and part groups” (or the notation <Part/PG>) comprises “any kind of part used in the buyer company’s manufacturing process.”

Items and Manufacturer Parts

Items (Parts and Documents) and Manufacturer Parts – we refer to these collectively as “parts” – are two base classes in Agile PLM that are used to create objects that represent the things that your company and its suppliers assemble into the products your company sells. They are therefore the entities for which compliance data must be sought.

Part Groups

A part group (PG) is a “container” that tracks the overall chemical composition for all parts of a particular type. If multiple parts share the same properties – for example, the same composition – you can define a part group with those characteristics. The parts (items and manufacturer parts) belonging to a part group have a conversion factor that is used to convert data such as Mass and Substances Content from the part group to its member parts.

To describe how the conversion factor works, let a part group describe a series of cable, made of the same materials and available from supplier(s) in a variety of lengths. The part group (the Agile object) contains the data that defines the “unit” length of cable to be 2 feet long. The part group

object then lists cables of 2 ft, 6 ft, and 10 ft in length. So, the 2-ft cable has a conversion factor of 1 in terms of its mass and hazardous substances content, the 6-ft cable has a conversion factor of 3, while the 10-ft cable has a conversion factor of 5.

Declarations

A declaration is the main object of record in the PG&C solution: it stores questions posed by a compliance manager to an information supplier about the supplier itself, its products, or how its products comply with given specifications. Upon completion, it contains the supplier's data and responses to the questions. Also, declarations keep track of all the substances and materials that are contained in parts or part groups.

PLM 9.2.2 offers an attribute called User-entered CAS Number, which can be entered by the information supplier on a declaration or by a regular user on a part or part group. These are used by the compliance manager to ascertain precisely what substance is being referred to by the supplier.

In Agile PLM, the Declarations base class has seven default classes of declarations, each with a single child subclass. The following table defines the kinds of declarations in PG&C.

Table 2-1: Declarations classes

Declaration class	Definition
Substance Declarations	The supplier is requested to provide compliance information for each substance within the specifica
Homogeneous Material Declarations	The supplier is requested to provide a complete BOS breakdown of the part and provide compliance information at the homogeneous material level.
Part Declarations	Receive part-level compliance information as well as other composition header level information (manufacturing parameters).
JGPSSI Declarations	The supplier is requested to provide compliance information (weights) according to the JGP stan Note: There is a fully supported Japanese version of the JGPSSI template for creating JGPSSI Declasee your administrator.
Supplier Declarations of Conformance	A questionnaire to assess supplier compliance with specifications from customers and government agencies. The survey addresses compliance at a general company level. Can be used for CSR type dec
IPC 1752-1 Declarations	A Joint Industry Guide (JIG) substance declaration for electronic products.
IPC 1752-2 Declarations	A Joint Industry Guide (JIG) homogeneous-material declaration for electronic products.

Declarations are the routable objects in PG&C, similar to change orders in Product Collaboration. As a routable object, each declaration advances through a workflow that implements the Request for Information (RFI) business process. When a declaration is released by the compliance manager, the information gathered from it is published to the product record, thereby updating the composition data contained within the parts and part groups listed by the declaration.

Using Agile Web Client

This chapter includes the following:

- Introducing Agile Web Client 9
- Changing Your User Profile 12

Introducing Agile Web Client

Agile Web Client is opened using only a browser. Web Client is the only client that supports Agile's Product Governance & Compliance solution (PG&C). As a supplier, you are generally assigned to "Basic mode," and your user interface with Web Client has been streamlined for responding to PG&C declaration requests.

If your work becomes more involved and the buyer firm assigns you one of the "Advanced modes," you will see the full user interface of Web Client; in that case you will refer to the standard solution manual, *PG&C User Guide*.

Logging In to Web Client

Your buyer company's compliance manager has issued you a starting URL, along with username (User ID) and password. If a URL is specified in the documentation or release notes, copy the upper- and lower-case characters exactly, including the full domain name specified.

To start Web Client:

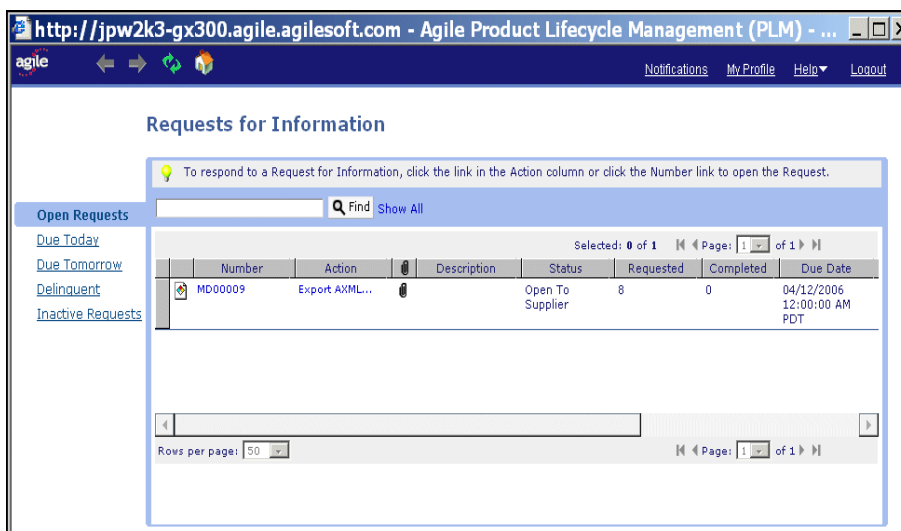
1. Start your browser.
2. Click the Web Client bookmark, if one exists, or type a URL that follows this pattern:
`http:// <web-server>.<domain-name>.com/Agile/PLMServlet`
The Login page appears.
3. Enter your username. Your username is not case-sensitive.
Your *username* is assigned by your Agile compliance manager; it is likely an abbreviation of your full name. For example, the name Michael Jones may be abbreviated to MICHAELJ or MJONES.
4. Enter your password. Your password is case-sensitive.
5. Click the Login button. If you make a mistake, click Clear and retype your username and password.

The login process is complete, and the Requests for Information page appears. In the page's title bar you will see "Welcome, <Your Name>".

The page is on the Open Requests link, so the table will list any Agile "declaration requests" that have





been sent to you. The other links are described in [Left Pane Links](#) (on page 11).


Figure 3-1: Agile Web Client (Basic mode) for PG&C supplier



Main Toolbar

You can use the toolbar buttons on the main toolbar to perform the tasks described in the following table.

Button	Name	Description
	Back	Takes you to the previous page you viewed in your browser. (It does not, however, undo any changes you entered in Agile.)
	Forward	Takes you to the next page forward. It is disabled if you have not gone forward from the page currently in your browser.
	Refresh	You can refresh (update) the information on the visible page.
	Home	Brings you back to the basic RFI page.
	Notifications	Clicking the link displays a list of your received notifications, alerting you to events in the RFI process.
	My Profile	Clicking the link displays the information that defines your "user object," which governs your access to Agile declarations. You can click Edit and change any of the editable fields. Click Save to save these changes or click Cancel to end the operation without changing your profile. For more information about changing the fields and definitions of the user properties, see Changing Your User Profile (on page 12).
	Help	The Help > About Agile command displays version information.
	LogOut	Lets you exit Web Client.

Button	Name	Description
 Find	Find (Run Simple Search)	Searches for declarations that match your typed input. For example, if you are in Open Requests and there are many, you can search and find the one you are looking for.

Logging Out of Web Client

To log out of Web Client:

1. From the menu bar, click the Logout button.
2. You are returned to the Login page. To exit, close the browser from the upper-right corner.

Printing Declarations

From the Basic Supplier Interface, the system will print the following tabs of a declaration: Cover Page; PageTwo; PageThree; Parts/Part Groups tabs as well as the corresponding Substances tables; and Specifications.

Left Pane Links

The left pane on the main RFI page has links as follows:

- **Open Requests** – this is the default link so you generally see a list of all your open declaration requests. If you have clicked another link, Open Requests appears as a live link.
- **Due Today** – lists all open declarations whose due date is set for the current calendar day.
- **Due Tomorrow** – lists all open declarations whose due date is set for the next calendar day.
- **Delinquent** – lists all open declarations whose due date is set for the previous calendar day or earlier.
- **Inactive Requests** – lists all declarations that were submitted to you but that have been closed by your buyer.

Open Declaration Links

When you have opened a declaration request, the left pane changes its links to the following:

- **Edit** – Click this link to activate editable fields. Change or add values in any of those fields. Click Save to preserve your changes, or clicke Cancel to end the operation with no changes saved.
- **Add Attachments or View Attachments** – Click this link to add attachments to the declaration (for example, you may want to return a spreadsheet file to the buyer). If the declaration already has attachments, the link says View Attachments, but you can still add attachments by clicking and following the user interface.
- **Submit Declaration** – When you have completed providing the requested data on the declaration—and signed off– clicking this link will send it back to the compliance manager at the buyer firm.
- **Print** – You may wish to have or distribute a hardcopy of the declaration at the start or

when it is completed. Click this link to bring up a Print dialog.

- Email Comments – You may have a question for the compliance manager or other information that you want to quickly distribute. When you click this link, there are two elements to complete. In the Comments field, simply type your message or question. Click the Send To button to start a wizard to find names.

When you are ready, click Send to send the comments. Click Cancel to end the operation with no email sent.

Using the Process Extensions

Note that following the actions listed above, other applicable process extensions are displayed. This topic is covered in [Importing and Exporting Declarations](#) (on page 24).

Changing Your User Profile

Your User Profile is simply the collection of settings that were entered by the Agile administrator when your “user object” was created. Clicking the link in the main toolbar displays the information contained in your profile, some of which is simply information (like phone number) and some of which governs your access to Agile declarations (like Role).

Your user profile is available for you to modify, within constraints set by the administrator. It contains data under two tabs, General Info or Preferences.

Important Under Preferences, the Response Edit Mode property is set to Basic and should be left on that setting.

If you select one of the other two settings, Advanced Table Edit or Advanced Wizard Edit, when you click Save, you will be prompted to log out and log back in; you would then log in to Web Client (Advanced mode), where your capabilities are restricted.

If you do log in to Web Client (Advanced mode), you will have to click the My User Profile link and go to Response Edit Mode property to change it back to Basic, followed by logging out and logging back in to Web Client (Basic mode).

If you work frequently with buyer companies and are often required to create declarations, you can be assigned additional roles and privileges to enable you to work effectively in Web Client (Advanced mode).

You have an opportunity to enter information when you first log in to Web Client. Again, your Agile administrator determines to what extent you can edit your user profile.

To edit or add information to your user profile:

1. Open your user profile by clicking My Profile.
2. Click the tab on which you want to make changes. For instance, to make changes to the General Info tab, click that tab.
3. Click the Edit button on that page. Use lists, browse buttons, and text boxes to enter the requested information.
4. When you have finished, click Save. If you wish to cancel your changes, click Cancel. Clicking the other tab (General Info or Preferences) will also cancel the current Edit operation without saving changes.

5. To verify changes you make to your user profile, it is best to log out of Web Client and log back in.

Note If you will be working primarily in Web Client, check this setting in your user profile: Preferences > System Preferences > Preferred Client; it should be set to Web Client. Also, Receive Email Notifications should be sent to Yes. This will ensure that you will receive email notifications in the same client you are working in. If there is a discrepancy and you are not able to change these properties, see your Agile administrator.

User Properties Defined

Table 3-2 lists and describes the properties common to supplier users in the Agile PLM system.

Table 3-2: User properties

Property	Description
General Info tab	
User ID (username)	The user's Agile PLM login user identification, or username. It must be unique in the Agile PLM address book. The maximum is 128 characters.
First Name and Last Name	The user's public name. Neither of the user's Names fields has to be unique in the system, only the user's User ID must be unique.
Status	Indicates whether the user is enabled (Active) or disabled (Inactive). Not editable.
Email	The user's valid email address for change notification/routing. Note: If there is not a valid email address in the Email field, the user will not receive any email notifications.
Title	The user's title, for example, Senior Engineer.
Address fields	There are four address fields that are used for informational purposes only: Address (street), City , and Postal/Zip Code .
Phone number fields	The user's Business Phone and Mobile Phone numbers (for informational purposes only).
Fax	The user's fax number (for informational purposes only).
Pager	The user's pager number (for informational purposes only).
Secondary Email	The user's valid email address for change notification/routing. The Secondary Email is optional, but when the field is filled in, the user receives notifications at both email addresses.

Table 3-3: User properties

Property	Description
General Info tab, continued	
Role(s)	The user's role assignments. This property determines a user's access to the objects in Agile PLM from the point of discovery forward.

Property	Description
User Category	Power, Concurrent, or Restricted: you as a supplier are a Restricted user.
Use Login Password for Approval	Each user has a login password and approval password (used to approve changes).
Allow Escalation Designation Approval	This setting is editable. If the user has identified one or more designated escalation <i>persons</i> (DEPs), this setting determines when the DEPs can approve or reject a declaration. Settings: After Escalation – The user's DEP can approve a routable object only after it has been escalated. Always – The user's DEP can always approve or reject a routable object.
Sites	Sites are used for distributed manufacturing, but as sites are not supported by PG&C, this is unlikely to have options.
Authorized Ship-To	Authorized Ship-To is used only by PCM.
Preferences tab	
Preferred File Manager	Select from the list of file servers. For best performance, select a file server that is local server for you.
Receive Email Notification	Controls whether the user can receive automatically generated email notifications from the system. <i>Settings</i> = Yes or No
Language	English is available with all Agile PLM licenses. Agile PLM includes Japanese or Simplified Chinese, per your license. Other languages will be made available in the future.
Preferred Date Format	The format in which dates are displayed to the user. Default is MM/dd/yyyy.
Time Zone	The time zone where the user is located.
Preferred Time Format	The format in which times are displayed to the user. The default is hh:mm:ss aaa (aaa = am or pm).
Preferred Currency	The currency in which prices/costs are displayed to the user. The default is U.S. Dollar.
Number Format	The format in which numbers are displayed to the user.
Preferred Inbox View	Select between Activities, Notifications, and Workflow.
Response Edit Mode	This field should be left set to Basic. The other two settings, Advanced Table Edit and Advanced Wizard Edit, will take you into the main Web Client, where your capabilities are restricted.
Rows per Table Display	The number of rows that appear in the user's Agile Web Client user interface. The default is 50.
Static Table Headers	Set to Yes to carry table headers to additional pages.
Encode Type	The types are Western European (ISO), Japanese (Shift JIS), Traditional Chinese (Big 5), Japanese (EUC), Simplified Chinese (GB2312), and Unicode (UTF-8).

Responding to Agile Compliance RFIs

This chapter includes the following:

▪ Filling Out a Declaration	16
▪ About Declaration Classes and Fields.....	18
▪ Substance Editing.....	23
▪ Importing and Exporting Declarations.....	24
▪ Working with Microsoft Excel-based Client.....	27

A Request For Information (RFI) is the process that a manufacturing company (the buyer) uses to seek compliance data from its suppliers. The buyer uses Agile PG&C to create declarations. When the buyer firm creates a declaration, it specifies a unique declaration name and a single supplier company.

The Default Declarations workflow follows a straightforward process flow, as detailed in the following table.

Table 4-1: Typical RFI Workflow

Status	Action
Pending	Compliance manager (an Agile user who has been assigned the Compliance Manager role) crea new declaration, or modifies an existing declaration by adding new items, manufacturer parts, or commodities. Specifications are added to the declaration, and also an information supthere is always only one supplier per declaration.
Open to Supplier	The declaration requests the supplier (an Agile user who has been assigned the Material Provider role) to confirm whether parts comply with specifications.
Submit to Manager	Supplier confirms or denies that the parts that they supply comply with regulations. The supplier electronically "signs" and submits the declaration back to the compliance manager.
Review	The compliance manager and other reviewers verify and approve the contents of the declaration.
Released	The compliance manager releases the declaration, thereby publishing the new data about the substances and materials into the product record. Once published, the materials are visible on the Compliance tab of the part or part group, as appropriate. The "buyer" company can now examine the quantities of all materials in a given top-level assemand find out if the assembly is compliant with a set of specifications.
Implemented	Once the parts are manufactured and disseminated in the field, the compliance manager implethe declaration, thereby completing the workflow.

Filling Out a Declaration

To complete and sign off declarations, declaration recipients for the supplier company have been assigned a role that permits access to the declarations. The default declaration recipient at the supplier company receives an email of notification.

All users at the supplier company who have been assigned the appropriate role *can* respond to the declaration.

If you have questions about who in your company has been assigned this role, contact your buyer company.

When you are sent a declaration request, you are responsible for completing it. You must disclose whether or not any restricted substances are contained in the component or subassembly it lists, and whether those substances comply with the given specifications.

Once a declaration is opened to a supplier, only the supplier's declaration recipients can edit it (that is, Agile users assigned the "(Restricted) Material Provider" role). For other users, including the compliance manager, the declaration becomes "read-only" until it is returned by the supplier.

Notifications when Declarations Advance to and from Supplier

This set of default behaviors regards automatic notifications, not user-designated Approvers and Observers.

- Declaration Buyer to Supplier – The notification is automatically sent to the supplier. You can add more users to receive notification.
- Declaration Supplier to Buyer – The compliance manager is automatically added to the notification list. If no compliance manager was selected, the system add everyone on the Compliance Managers notification list.
- Declaration Supplier to Buyer – If there are no compliance managers in the system, the originator is added to the notification list.

Information Supplier Fills Out a Declaration

When a declaration request is opened to an information supplier, the supplier is responsible for completing the declaration and disclosing if any restricted substances are contained in the components and subassemblies it provides and whether those substances comply with specifications.

To complete and sign off on declarations, one or more declaration recipients for the information supplier must be assigned the (Restricted) Material Provider role. If you have questions about who in your supply chain has been assigned this role, see your administrator.

When the material provider changes the status of the declaration from Open to Supplier to Submit to Manager, he must "sign off" the declaration.

Process Sequences in Declaration Fulfillment

The above describes a standard Agile declaration being to a supplier and, upon completion, being returned to the buyer. The following process sequences describe a range of responses to declarations.

Declaration Opened and Completed in Agile Web Client

1. Supplier firm's default recipient receives email notification from buyer firm's Compliance Manager requesting completion of a compliance declaration.
2. Click link within notification and log into Agile Web Client (Basic mode).
3. Click Open Requests link and select the particular declaration request.
4. Fill in your responses directly in Web Client. Currently this is possible only for Supplier Declarations of Conformance.
5. Complete the Signoff Message and submit response back to the Compliance Manager.

Declaration Opened in Web Client and Completed in Microsoft Excel-based Client

1. Supplier firm's default recipient receives email notification from buyer's Compliance Manager to complete a compliance declaration.
2. Click link within notification and log into Agile Web Client (Basic mode).
3. Use the Open in Excel process extension. The declaration opens in (pre-installed) Microsoft Excel-based Client, and the file is immediately saved to your hard drive in a folder called Agile Spreadsheet Files.
4. Within Microsoft Excel, enter your responses into the form, and save it.
5. On the Agile menu in the Excel client, choose Submit Response.
6. Complete the Signoff Message and click OK.

Declaration Opened and Completed in Microsoft Excel-based Client

1. On the Agile menu in the Microsoft Excel-based Client, select from list of open declarations. The spreadsheet is populated with data from new declaration.
2. Within Microsoft Excel, enter your responses into the form, and save it.
3. On the Agile menu in the Excel client, choose Submit Response.
4. Complete the Signoff Message and click OK.

Declaration Opened in Web Client and Completed Using Process Extensions

1. Supplier firm's default recipient receives email notification from buyer's Compliance Manager to complete a compliance declaration.
2. Click link within notification and log into Agile PLM via Web Client (Basic mode).
3. Use the Export JGPSSI or Export AXML or Export IPC XML process extension. The declaration request data is exported in the appropriate format, and you can open the file.
4. Enter your responses into the file, and save it.

5. Use Import JGPSSI or Import AXML or Import IPC XML to import the completed declaration data into Agile PLM.

Note	Be sure that you understand the value of two new fields: Alias (see Substance Aliasing (on page 7)) and User-entered CAS Number (on page 22).
------	---

About Declaration Classes and Fields

The Declarations classes in Agile PLM were introduced in [Declarations](#) (on page 8).

More About the Declarations Classes

Following are additional facts and rules of business logic for the Declarations classes.

Part Declarations

This class of declarations is used to ask questions related to parts or part groups. The buyer company wants to send out a questionnaire to assess part compliance with specifications from customers and government agencies. Typical questions could be: What is the maximum re-flow temperature of this part? What type of plating is on this part? Is this part in compliance with a certain specification? No fields are pre-populated in this declaration.

Substance Declarations

This class of declarations allows a supplier to respond at a substance-group level and at a substance level without being able to add to the Bill Of Substances (BOS). It could be a material compliance declaration in which the buyer company wants you to declare compliance with specifications at the substance level; or, it could be a partial material disclosure declaration in which you are requested to disclose the weight and/or concentration of selected (or all) substances that are contained within the components and subassemblies it sources from your firm (or the firm whose products you are providing compliance information).

A substance declaration supports pre-population of substances and substance groups from associated specifications.

Supplier Declarations of Conformance

This class of declarations requests statements from suppliers at a supplier level. It is basically a supplier survey. The buyer company wants to send out a questionnaire and receive a declaration from the supplier to assess compliance with specifications from customers and government agencies. Typical questions could be: Do you have a RoHS compliance Initiative going on? When do you anticipate to have 100% compliant Product? Which ISO certifications do you possess. No fields are pre-populated in this declaration. The SDOC does not require association with any items, manufacturer parts, part groups, or even specifications in order to be effective. Adding specifications to this type of class is allowed for reference purposes.

Japanese Green Procurement Declarations

This class of declarations is used against the template for the Japanese Green Procurement format. Agile supports only JGPSSI version 2.02. The buyer company wants suppliers to provide a

declaration in the JGPSSI format using the JGPSSI supported entities. No substances from specifications are pre-populated in this declaration.

Homogeneous Material Declarations

This class of declarations allows a supplier to build a Bill Of Substances (BOS) consisting of four levels: subpart, homogeneous material, substance groups, and substances. It could be a material compliance declaration at the homogeneous material level, or it could be a partial material disclosure declaration to discover the weight and concentration of substances that are contained within the homogeneous materials. This can be effected through an outside application or spreadsheet. No fields are pre-populated in this declaration.

IPC 1752-1 and IPC 1752-2 Declarations

These Declarations classes support compliance work using the IPC forms for substance declarations (IPC 1752-1) and homogeneous materials declarations (IPC 1752-2). These forms are in Adobe PDF format. Currently (Releases 9.2.2.x), Adobe Acrobat version 7.0 is both the minimal requirement and the recommended release for work with the IPC forms. The website for Adobe Software is www.adobe.com.

Caution There is an issue with Adobe Acrobat 8.0 and 8.1 in which certain IPC fields (for example, Terminal Plating/Grid Array Material) cannot be displayed. Until the problem with Acrobat 8.x is resolved, please use Acrobat 7.x with IPC forms.

IPC Formats Supported in this Release

The present Agile PLM Release supports released Version 1.1 of the IPC format. The website for the IPC forms and information about the "1752" standards is www.ipc.org/IPC-175x.

For importing and exporting data, this matrix describes supported IPC version as related to PLM version:

- Importing XML data into PLM 9.2.2.2–4: IPC Versions 1.1 and 1.02 are supported.
- Importing XML data into PLM 9.2.2.1: IPC Version 1.02 is supported.
- Exporting XML data from PLM 9.2.2.2–4: IPC Version 1.1 is supported (not 1.02).
- Exporting XML data from PLM 9.2.2.1: IPC Version 1.02 is supported.

There are a few differences between Versions 1.1 and 1.02. In Version 1.1, the field "Homogeneous Material" cannot be blank; if it is blank, it cannot be exported to an XML file.

Caution In Version 1.02, the RoHS Exemption list offers entries "10a" and "10b", but in Version 1.1, these two have been removed. So, if you import in Ver.1.02 having chosen these values, the values are imported to the Agile system, but when you export to Ver.1.1, those two values are no longer there.

The IPC1752-2 PDF form allows entry of unstructured substance data. For instance, the user can enter homogenous material data in a hierarchical structure or in flat structure. With Rel. 9.2.2.1, the system supports importing the data if it is in a proper hierarchical structure, but throws an error if the user imports it in a flat structure. As of Rel. 9.2.2.2, the system accepts the data even if the IPC data is in the flat structure.

In addition to the above, the system also stores the flat structure within the declaration, which can

show the user how the data was retrieved from IPC and how Agile converted the data into a hierarchical structure.

The storing of the flat structure is accomplished through four flex-fields, Text01--Text04, on the part Substances tables. They are renamed as IPC Sub-item, IPC Material, IPC Category, and IPC Substance.

By default, these fields are disabled (not visible), and the flat structure is not stored. In order to capture the flat structure of the composition, these fields must be enabled by the administrator. However, if the flexfields are enabled, but you do not have Modify privilege for them, the flat structure is not be stored and you will get an Insufficient Privilege error during import.

In summary, if you need to see those recorded fields, see your administrator.

Guidelines for Parts and Specifications on IPC Declarations

It is required that each IPC declaration carry just one specification and just one part/part group.

There is no restriction to the number of specifications or the number of parts/PGs that can be added to IPC declarations. However, if a declaration carries multiple items, manufacturer parts, or part groups *and* multiple specifications, Export IPC XML will only export one composition from the declaration's <Parts/PGs> tables.

Similarly, Import IPC XML will update only one composition, that of the part that was exported. The system identifies this by the part number, rev, and the first specification in the declaration's Specifications table, which is sorted alphabetically.

Note	If you create one of the "1752" declarations and name a part/part group whose Name or Number includes square brackets ("[" and "]"), the IPC transformation (through the Excel integration) treats it as a manufacturer part and then it sends an error message that the manufacturer part does not exist in the declaration. You must remove the brackets from the part, manufacturer part, or part group's Name or Number.
------	--

For IPC1752-1 Declarations, if the IPC form has an invalid substance with an asterisk in its name, the imported substance's name is truncated from the asterisk to the end (left-to-right).

Significant Attributes in Declarations

The information supplier-user should do the following to complete a declaration.

- For each part, manufacturer part, and part group, fill in the Mass, Mass PPM, and Compliance fields, particularly for substances that are restricted by specifications
- Add or remove substances from the Substances tables (under the Items, Manufacturer Parts, and Part Groups tabs) on the declaration as necessary; to do this, they must use process extensions (Export AXML and Import AXML) or the Microsoft Excel-based Client
- Complete other flex fields on the <parts/PG> tables as well as the <parts/PG> Substances tables.

Known Issue about Item Number and Manufacturer Part Number Attributes

There exists a mapping issue on the IPC forms regarding the attributes Item Number and Manufacturer Part Number (Mfr Item Number), and also Item Name and Mfr Item Name. You may receive a declaration and expect to see (or want to enter) data in Mfr Item Number and Mfr Item Name. The issue is that the fields that should be used are Item Number and Item Name.

This will be fixed in a future release, until then the workaround is this: if you are having this problem, request from your buyer company that they set a process extension that can be triggered when moving the declaration to Open to Supplier. The process extension copies the value from Item Number to Mfr Item Number, and from Item Name to Mfr Item Name.

This will correct all four fields on the IPC form (after exporting from PL M) to have the values needed by both the Supplier users (in order to complete the form) and the PLM system (for importing back to PLM).

Mass

The weight of a part (item or manufacturer part) or assembly, expressed in systemwide UOM (unit of measure). Mass in Item Title Block, is a “rev-controlled” attribute.

Mass Disclosure

The Mass Disclosure attribute is found on the Part/PG tabs of declarations (as well as the Composition tab of parts and part groups). It has three values: Fully Disclosed, Partially Disclosed, and Undisclosed. The correct value is generated by the system during composition rollups.

Full Disclosure, Partial Disclosure, and No Disclosure

These are the three types of disclosure, and how they are qualified by substance compositions and homogeneous material compositions.

- Fully Disclosed composition (Full Disclosure):
 - A Substance composition is considered to be Fully Disclosed if the difference between the part's mass and the sum of the masses of all the substances is less than or equal to the Mass Tolerance Percentage setting.
 - A Homogeneous Material composition is Fully Disclosed if this two-step process is satisfied: (1) The difference between a material's mass (that is, the immediate parent of the substances) and the sum of mass of the substances under that material is less than or equal to the Mass Tolerance Percentage setting; and, (2) The difference between the part's mass and the sum of mass of the parents of the substances should be within the Mass Tolerance Percentage.
- Partially Disclosed composition (Partial Disclosure):
 - A Substance composition is Partially Disclosed if the difference is more than the Mass Tolerance Percentage, in which case an “Unreported” substance is added by the system to fill in the missing mass.
 - A Homogeneous Material composition is Partially Disclosed if one of the following is true:
- (1) The difference between a material's mass (that is, the immediate parent of the substances) and the sum of mass of all the substances under that material is greater than the Mass Tolerance Percentage setting; and, (2) the difference between the part's mass and the sum of mass of the

parents of the substances is greater than the Mass Tolerance Percentage setting; or

- The part's weight is missing, but none of the information is missing in the BOS tree. That is, the Mass and PPM should not be "null" anywhere in the entire BOS tree, including subparts, materials, or substances.
- Undisclosed composition (Non-disclosure):
 - If the mass is missing for the part, substance, or the immediate parent of the substances, it is considered an Undisclosed composition.
 - Furthermore, a Homogeneous Material composition is Undisclosed if any of these cases are true:
- One of the substances in a material does not have Declared Mass and Declared PPM; or,
- One of the materials does not have a Declared Mass; or,
- One of the materials does not have any substance; or,
- One of the subparts does not have any child.

User-entered CAS Number

A value can be entered by the information supplier on a declaration or by a regular user on a part or part group. These are used by the compliance manager to ascertain precisely what substance is being referred to by the supplier.

Intentionally Added

Agile PLM 9.2.2 introduces the "Intentionally Added" property to act as the constraint defined in the Joint Industry Guide and the IPC 1752 forms. If, for a substance in the specification, Disallow Intentionally Adding is Yes, when a supplier or other user enters Yes in Intentionally Added, the substance's Calculated Compliance value is Non-compliant. If that substance was not intentionally added (= No), the system can go ahead and check the Threshold PPM of the substance-for-the-spec.

The compliance manager can modify Int.Added in the Pending status of the Default Declarations Workflow. The supplier can modify it in the Open to Supplier status of the same workflow. It cannot be modified in any other status (without administrator impact). If there is no value in Intentionally Added field, the system assumes No when performing rollout calculations.

Specification

The compliance manager may inform the supplier that the buyer is going to validate the supplier's substances based on the specifications on the Specifications tab. If there are one or more specifications associated with this Substance Declaration (this type only), the system automatically prepopulates the substances from those specifications for all the items, manufacturer parts, or part groups in this declaration. If there is no specification associated with this declaration, no substance is prepopulated, even for the substance declaration.

The specifications may concern many substances, including those not used by the parts contained in the declaration. When a substance declaration is opened to the supplier, any substances from the specifications are automatically added to the Substances for <Part/PG> tables. This ensures that you are properly tracking any restricted substances contained in parts listed in the substance declaration.

Specification Intentionally Added

In parts/part groups and declarations, the Substances tables also have an attribute called Spec Intentionally Added. This property points to, on the substance's Specifications > Substances tab, the value of attribute Disallow Intentionally Adding. This read-through attribute is readable and searchable but cannot be modified. For existing customers who do not have an Intentionally Added flag in the Specifications > Substances tab, the system assumes that it is set to No.

Exemption

There is an Exemption field on a declaration's <Parts/PGs> tabs. Exemptions are set in a specification's General Info page; the values you see for Exemption on a declaration's Parts tab are really coming from the associated specification.

For this reason, Declared Compliance is valid only if there is an associated specification in the declaration. Only when there is a specification, and the spec has exemptions associated (found in the spec's General Info), can you set Declared Compliance to Exempt: when you do, you are then prompted to select an exemption from the list.

Declared Compliance

This field allows an information supplier to simply declare the compliance state of the substance, either Compliant or Non-Compliant.

Threshold Mass PPM

"PPM" means Parts Per Million. The Threshold Mass PPM value comes from the Threshold Mass PPM for the corresponding substance in the specification. If enabled, it can be used by the supplier to declare the mass at each level of the BOS.

Declared PPM

If enabled, can be used by the supplier to enter the PPM values directly; can be used by the supplier to declare the mass at each level of the BOS. It supersedes the Calculated PPM in the rest of the rollups.

Calculated PPM

The PPM as the result of the division of the mass of two levels.

Substance Editing

Substance editing lets you add, remove, and edit substances directly in (unpublished) declarations. The substance editing feature is available on all types of declaration except Supplier Declaration of Conformance and Part Declaration.

Linked to Composition Type Field, the declaration classes in which substance editing works are as follows.

- Composition Type = Substance Composition:
 - Substance, JGPSSI, and IPC 1752-1 declarations

- Composition Type = Homogeneous Material Composition:
 - Homogeneous Material and IPC 1752-2 declarations

The behavior of the four new Actions are described according to the type of declaration.

Substance Type Declarations: Substance, JGPSSI, and IPC 1752-1 Declarations

Add -- lets you add a substance group or a substance to the selected part. You can use search, or type in known substance names directly; "Type-in names" is also the method to add a non-existing substance. The system will prompt if you add a duplicate substance to the same part. When you add a substance group, the system does not populate its children. In the Substance type of declarations, you cannot add a material or subpart directly to the part.

Note	If a substance/substance group added (using typed-in names) does not exist in the system, a question mark ("?") appears in the substance name indicating this is an invalid substance. You can use Verify Substances to make the correction.
------	--

Add Sub-level -- lets you add a substance to a selected substance group (SG). If you do not select an SG (or you select a substance instead), the system prompts you to select a valid row. You can type in known substance names to add an existing or non-existing substance to the parent SG.

Edit -- lets you edit all editable fields on selected rows. Note that you cannot edit the name of the substance itself.

Remove -- lets you remove selected rows from the part. If the selected row is a substance group, the system removes all substances under that substance group.

The system will block any attempts to add the "Unreported (System)" substance.

Homogeneous Material Type Declarations: Homogeneous Material and IPC 1752-2 Declarations

Add -- lets you add a subpart or a material to the selected part. You can use search, or type in known subpart/material names directly; "type-in names" is also the method to add a non-existing subpart/material. The system will prompt if you add a duplicate subpart/material to the same part. In the Homogeneous Material type of declarations, you cannot add a substance or substance group directly to the part.

Add Sub-level -- lets you add a substance to a selected SG, a substance or SG to a material, or a subpart or material to a subpart.

Edit -- lets you edit all editable fields on selected rows. Note that you cannot edit the name of the substance itself.

Remove -- lets you remove selected rows from the part. If the selected row is a parent (subpart or material or a substance group), the system removes the entire hierarchy under that parent.

The system will block any attempts to add the "Unreported (System)" substance.

Importing and Exporting Declarations

"Process extension" is the formal name of items in the Actions menu in declarations (in standard Web Client) or links in the Actions column of declaration rows (in simplified Web Client). Links in the Actions column enable you to perform an operation directly without having to go open the

declaration itself.

Note	Any kind of declaration can use “Open in Excel” as long as an Excel template for that declaration class has been created. Consult with your buyer firm and the Oracle Consulting – Agile Practice representative. Also see Working with Microsoft Excel-based Client (on page 27).
------	--

These are the current process extensions that may be available on declarations. The Agile administrator at the buyer firm may have elected not to use more than the basic Actions found on most Agile objects.

Process Extensions for JGPSSI Declarations

The following process extensions apply to JGPSSI declarations:

- Open In Excel – This process extension activates the Microsoft Excel-based Client and opens the JGPSSI template in Excel
- Import JGPSSI – This process extension imports data from a text file in JGP Block format for integration with the JGPSSI Excel template
- Export JGPSSI – This process extension exports data to a text file in JGP Block format for integration with the JGPSSI Excel template

Process Extensions for Part, Substance, and Homogeneous Material Declarations

The following process extensions apply to Homogeneous Material Declarations, Part Declarations, and Substance Declarations:

- Import AXML – “AXML” is Agile XML, an XML representation of Agile's business schema that contains all product content managed in Agile. You use this process extension to export the declaration information in aXML format. The declaration can be completed and re-imported into PLM.
- Export AXML – A declaration that was exported using the aXML format and then completed can be imported back into PLM using this process extension

Process Extensions for IPC Declarations

The following process extensions apply to IPC declarations:

- Import IPC XML – Imports XML data that is used to complete IPC forms
- Export IPC XML – Exports XML data that is used to complete IPC forms

Note	It is possible that when you submit data to Agile from Microsoft Excel-based Client, the data may not be successfully imported at the buyer side. Yet you may have received a notification indicating that transmission of the data was successful. The notification is triggered by your submitting the data, not by its successful receipt: the compliance manager may ask you to re-submit the data in these cases.
------	--

Exporting PG&C Data

Grouping the possible “export” process extensions:

- JGPSSI declarations use Open in Excel to open the contents of the declaration's Parts tab in the JGPSSI format
- Export JGPSSI exports the declaration in JGP Blocks format
- Export AXML exports the declaration in aXML format; this can be used with Part Declarations, Substance Declarations, and Homogeneous Material Declarations
- Export IPC XML exports the declaration in XML format that is used to complete IPC forms.

Importing PG&C Data

Grouping the possible "import" process extensions:

- Import JGPSSI imports a JGP Blocks file (if it was exported via Export JGPSSI) back into the declaration
- Import AXML imports an aXML file (if it was exported via Export AXML) back into the declaration
- Import IPC XML imports an XML file (if it was exported via Export IPC XML) back into the declaration.

Importing and Exporting IPC Declarations

This task outlines how you might receive an IPC declaration that was created in Agile at the buyer site. You would complete the declaration working in the IPC PDF.

A typical RFI sequence with an IPC declaration:

1. The compliance manager at the buyer site creates an IPC declaration in Agile PLM; this is an instance from one of Agile's IPC business classes, IPC 1752-1 Declarations or IPC 1752-2 Declarations. The default workflow for the declaration is moved to the Open to Supplier status.
2. You, the declaration recipient at the information supplier, log in to Web Client (Basic mode) and see the declaration name. A link in the declaration row activates the Export IPC XML process extension. (Or, if you click the declaration name, all available process extensions are displayed as links on the left navigation pane.) An XML file is saved on your machine.
3. If you have already downloaded the IPC PDF forms from the IPC web site (www.ipc.org/IPC-175x), open the IPC form in Adobe Acrobat and click Import Data (or File > Form Data > Import Data to Form), then specify the location of the XML file. The XML-contained data is imported to the PDF form.
4. Enter or modify values in the declaration.
5. When you have completed the form, the data is exported using Export Data (or File > Form Data > Export Data from Form). The existing XML file is overwritten.
6. Returning to Web Client, use Import IPC XML process extension to import the modified XML data. Then submit the declaration to the buyer firm.
7. At the buyer site, the compliance manager opens the completed declaration in Agile to review for possible release.

Working with Microsoft Excel-based Client

The Microsoft Excel-based Client should be installed, configured, and tested by the buyer company. If you have problems with the Excel integration in PG&C, contact the compliance manager at the buyer company.

When you first access a declaration via the Microsoft Excel-based Client, a folder is automatically created on your desktop to store declarations. The folder may be called Agile Spreadsheet Files. Although you must access the Client via Agile Web Client the first time, you can subsequently open Microsoft Excel and access declarations directly.

You may receive a test (JGPSSI) declaration from your buyer company, and you can use the following task to test whether the Microsoft Excel-based Client for JGPSSI Declarations is working properly.

To test JGPSSI Declarations in Microsoft Excel:

1. Log in to Agile Web Client.
2. Click the link to the JGPSSI Declaration to open it.
3. Click Open In Excel; it is in the Actions column.
4. Microsoft Excel is launched and the file is opened. You are prompted to save the file to a folder on your desktop.
5. Fill in a one or more fields on the sheet. For example, change the value of the Parts Mass field.
6. Save the Microsoft Excel file.
7. On the Agile menu in the Excel client, choose Submit Response. The Submit Response window appears. You are prompted to log in when attempting to submit response from Agile menu in Excel.
8. Type your approval password, and click Submit.
9. Wait while your response is uploaded. After a minute, a message box should appear: "Your response was successfully submitted for processing." Click OK.

Note When you open a JGPSSI declaration in Microsoft Excel and try to edit one of the cells, you may see the following error message: "The cell or chart you are trying to change is protected and therefore read-only. To modify a protected cell or chart, first remove protection using the Unprotect Sheet command (Tools menu, Protection submenu). You may be prompted for a password." However, the colored cells of the JGPSSI template (such as headings) are protected and cannot be edited. You should edit only unshaded (white) cells.

Note After submit from Excel Integration, it can seem that supplier data has been submitted and declaration has moved to next status, whereas the server takes awhile to process the data.

Notes on Excel-based Declaration Submissions

When the supplier has used the Microsoft Excel-based Client to submit the declaration, it is possible that data may not be successfully imported to the buyer side. There are two stages in which their data is processed. The data is uploaded to the server; upon successful upload, the supplier receives the message that "Your data has been submitted for processing." The data is then be

processed on the server and imported into the system.

If there was a problem with the upload, the supplier is notified immediately; but if the problem occurs at processing or importing on the server side, the system sends an email with the error log as an attachment to the supplier. This means that the declaration remains in Open to Supplier status, and this does not change until the supplier reviews the log in the email notification, makes appropriate changes, and re-submits.

Even if the import on the server side is successful, depending on the size of the declaration, it will take some time for the declaration to move from Open to Supplier to Submitted to Compliance Manager. So if the user checked the declaration immediately after submitting from Excel, they may not see the changes for awhile.