

---

# JD Edwards EnterpriseOne Tools 8.98 Web Services Gateway: Order Promising Adapter Programmer's Guide

---

**September 2008**

Copyright © 2003–2008, Oracle and/or its affiliates. All rights reserved.

### **Trademark Notice**

Oracle is a registered trademark of Oracle Corporation and/or its affiliates. Other names may be trademarks of their respective owners.

### **License Restrictions Warranty/Consequential Damages Disclaimer**

This software and related documentation are provided under a license agreement containing restrictions on use and disclosure and are protected by intellectual property laws. Except as expressly permitted in your license agreement or allowed by law, you may not use, copy, reproduce, translate, broadcast, modify, license, transmit, distribute, exhibit, perform, publish or display any part, in any form, or by any means. Reverse engineering, disassembly, or decompilation of this software, unless required by law for interoperability, is prohibited.

Subject to patent protection under one or more of the following U.S. patents: 5,781,908; 5,828,376; 5,950,010; 5,960,204; 5,987,497; 5,995,972; 5,987,497; and 6,223,345. Other patents pending.

### **Warranty Disclaimer**

The information contained herein is subject to change without notice and is not warranted to be error-free. If you find any errors, please report them to us in writing.

### **Restricted Rights Notice**

If this software or related documentation is delivered to the U.S. Government or anyone licensing it on behalf of the U.S. Government, the following notice is applicable:

#### *U.S. GOVERNMENT RIGHTS*

Programs, software, databases, and related documentation and technical data delivered to U.S. Government customers are “commercial computer software” or “commercial technical data” pursuant to the applicable Federal Acquisition Regulation and agency-specific supplemental regulations. As such, the use, duplication, disclosure, modification, and adaptation shall be subject to the restrictions and license terms set forth in the applicable Government contract, and, to the extent applicable by the terms of the Government contract, the additional rights set forth in FAR 52.227-19, Commercial Computer Software License (December 2007). Oracle USA, Inc., 500 Oracle Parkway, Redwood City, CA 94065.

### **Hazardous Applications Notice**

This software is developed for general use in a variety of information management applications. It is not developed or intended for use in any inherently dangerous applications, including applications which may create a risk of personal injury. If you use this software in dangerous applications, then you shall be responsible to take all appropriate fail-safe, backup, redundancy and other measures to ensure the safe use of this software. Oracle Corporation and its affiliates disclaim any liability for any damages caused by use of this software in dangerous applications.

### **Third Party Content, Products, and Services Disclaimer**

This software and documentation may provide access to or information on content, products and services from third parties. Oracle Corporation and its affiliates are not responsible for and expressly disclaim all warranties of any kind with respect to third party content, products and services. Oracle Corporation and its affiliates will not be responsible for any loss, costs, or damages incurred due to your access to or use of third party content, products or services.

Contains GNU libgmp library; Copyright © 1991 Free Software Foundation, Inc. This library is free software which can be modified and redistributed under the terms of the GNU Library General Public License.

Includes Adobe® PDF Library, Copyright 1993-2001 Adobe Systems, Inc. and DL Interface, Copyright 1999-2008 Datalogics Inc. All rights reserved. Adobe® is a trademark of Adobe Systems Incorporated.

Portions of this program contain information proprietary to Microsoft Corporation. Copyright 1985-1999 Microsoft Corporation.

Portions of this program contain information proprietary to Tenberry Software, Inc. Copyright 1992-1995 Tenberry Software, Inc.

Portions of this program contain information proprietary to Premia Corporation. Copyright 1993 Premia Corporation.

This product includes code licensed from RSA Data Security. All rights reserved.

This product includes software developed by the OpenSSL Project for use in the OpenSSL Toolkit (<http://www.openssl.org/>).

This product includes cryptographic software written by Eric Young ([ey@cryptsoft.com](mailto:ey@cryptsoft.com)).

This product includes software written by Tim Hudson ([tjh@cryptsoft.com](mailto:tjh@cryptsoft.com)). All rights reserved.

This product includes the Sentry Spelling-Checker Engine, Copyright 1993 Wintertree Software Inc. All rights reserved.

## **Open Source Disclosure**

Oracle takes no responsibility for its use or distribution of any open source or shareware software or documentation and disclaims any and all liability or damages resulting from use of said software or documentation. The following open source software may be used in Oracle's JD Edwards EnterpriseOne products and the following disclaimers are provided:

This product includes software developed by the Apache Software Foundation (<http://www.apache.org/>). Copyright (c) 1999-2000 The Apache Software Foundation. All rights reserved. THIS SOFTWARE IS PROVIDED "AS IS" AND ANY EXPRESSED OR IMPLIED WARRANTIES, INCLUDING, BUT NOT LIMITED TO, THE IMPLIED WARRANTIES OF MERCHANTABILITY AND FITNESS FOR A PARTICULAR PURPOSE ARE DISCLAIMED. IN NO EVENT SHALL THE APACHE SOFTWARE FOUNDATION OR ITS CONTRIBUTORS BE LIABLE FOR ANY DIRECT, INDIRECT, INCIDENTAL, SPECIAL, EXEMPLARY, OR CONSEQUENTIAL DAMAGES (INCLUDING, BUT NOT LIMITED TO, PROCUREMENT OF SUBSTITUTE GOODS OR SERVICES; LOSS OF USE, DATA, OR PROFITS; OR BUSINESS INTERRUPTION) HOWEVER CAUSED AND ON ANY THEORY OF LIABILITY, WHETHER IN CONTRACT, STRICT LIABILITY, OR TORT (INCLUDING NEGLIGENCE OR OTHERWISE) ARISING IN ANY WAY OUT OF THE USE OF THIS SOFTWARE, EVEN IF ADVISED OF THE POSSIBILITY OF SUCH DAMAGE.



# Contents

## General Preface

<b>About This Documentation Preface .....</b>	<b>vii</b>
JD Edwards EnterpriseOne Application Prerequisites.....	vii
Application Fundamentals.....	vii
Documentation Updates and Downloading Documentation.....	viii
Obtaining Documentation Updates.....	viii
Downloading Documentation.....	viii
Additional Resources.....	viii
Typographical Conventions and Visual Cues.....	ix
Typographical Conventions.....	x
Visual Cues.....	x
Country, Region, and Industry Identifiers.....	xi
Currency Codes.....	xii
Comments and Suggestions.....	xii
Common Fields Used in Implementation Guides.....	xii

## Preface

<b>JD Edwards EnterpriseOne Tools Web Services Gateway Order Promising Adapter Preface.....</b>	<b>xv</b>
Web Services Gateway Order Promising Adapter Companion Documentation.....	xv

## Chapter 1

<b>Getting Started with JD Edwards EnterpriseOne Tools Web Services Gateway Order Promising Adapter.....</b>	<b>1</b>
Web Services Gateway Order Promising Adapter Overview.....	1
Web Services Gateway Order Promising Adapter Implementation.....	1
Web Services Gateway Order Promising Adapter Implementation Steps.....	1

## Chapter 2

<b>Using the Order Promising Adapter.....</b>	<b>3</b>
Understanding the Order Promising Adapter.....	3
Developing Integrations.....	5
Creating Adapter Services.....	5

Understanding Adapter Services.....	5
Creating Adapter Services.....	6
Reviewing Adapter Service Information.....	7
Creating Notification Services.....	9
Understanding Notification Services.....	9
Creating a Response Notification Service.....	10
Reviewing Notification Service Information.....	10
Enabling Notification Services.....	11

### **Chapter 3**

<b>Troubleshooting Guidelines for the Adapter.....</b>	<b>13</b>
Understanding Messages and Error Logs.....	13
Reviewing Messages on the Integration Server.....	13
Resolving Starting a Listener Warning Message.....	14
Resolving Notification Events Not Delivered.....	14
Resolving Multiple Notifications Configured for the Same Listener.....	14
Resolving No Templates Available Error Message.....	15

<b>Glossary of JD Edwards EnterpriseOne Terms.....</b>	<b>17</b>
--	-----------

<b>Index .....</b>	<b>33</b>
--------------------	-----------

# About This Documentation Preface

JD Edwards EnterpriseOne implementation guides provide you with the information that you need to implement and use JD Edwards EnterpriseOne applications from Oracle.

This preface discusses:

- JD Edwards EnterpriseOne application prerequisites.
- Application fundamentals.
- Documentation updates and downloading documentation.
- Additional resources.
- Typographical conventions and visual cues.
- Comments and suggestions.
- Common fields in implementation guides.

---

**Note.** Implementation guides document only elements, such as fields and check boxes, that require additional explanation. If an element is not documented with the process or task in which it is used, then either it requires no additional explanation or it is documented with common fields for the section, chapter, implementation guide, or product line. Fields that are common to all JD Edwards EnterpriseOne applications are defined in this preface.

---

---

## JD Edwards EnterpriseOne Application Prerequisites

To benefit fully from the information that is covered in these books, you should have a basic understanding of how to use JD Edwards EnterpriseOne applications.

You might also want to complete at least one introductory training course, if applicable.

You should be familiar with navigating the system and adding, updating, and deleting information by using JD Edwards EnterpriseOne menus, forms, or windows. You should also be comfortable using the World Wide Web and the Microsoft Windows or Windows NT graphical user interface.

These books do not review navigation and other basics. They present the information that you need to use the system and implement your JD Edwards EnterpriseOne applications most effectively.

---

## Application Fundamentals

Each application implementation guide provides implementation and processing information for your JD Edwards EnterpriseOne applications.

For some applications, additional, essential information describing the setup and design of your system appears in a companion volume of documentation called the application fundamentals implementation guide. Most product lines have a version of the application fundamentals implementation guide. The preface of each implementation guide identifies the application fundamentals implementation guides that are associated with that implementation guide.

The application fundamentals implementation guide consists of important topics that apply to many or all JD Edwards EnterpriseOne applications. Whether you are implementing a single application, some combination of applications within the product line, or the entire product line, you should be familiar with the contents of the appropriate application fundamentals implementation guides. They provide the starting points for fundamental implementation tasks.

---

## Documentation Updates and Downloading Documentation

This section discusses how to:

- Obtain documentation updates.
- Download documentation.

### Obtaining Documentation Updates

You can find updates and additional documentation for this release, as well as previous releases, on Oracle's PeopleSoft Customer Connection website. Through the Documentation section of Oracle's PeopleSoft Customer Connection, you can download files to add to your Implementation Guides Library. You'll find a variety of useful and timely materials, including updates to the full line of JD Edwards EnterpriseOne documentation that is delivered on your implementation guides CD-ROM.

---

**Important!** Before you upgrade, you must check Oracle's PeopleSoft Customer Connection for updates to the upgrade instructions. Oracle continually posts updates as the upgrade process is refined.

---

### See Also

Oracle's PeopleSoft Customer Connection, [http://www.oracle.com/support/support\\_peoplesoft.html](http://www.oracle.com/support/support_peoplesoft.html)

### Downloading Documentation

In addition to the complete line of documentation that is delivered on your implementation guide CD-ROM, Oracle makes JD Edwards EnterpriseOne documentation available to you via Oracle's website. You can download PDF versions of JD Edwards EnterpriseOne documentation online via the Oracle Technology Network. Oracle makes these PDF files available online for each major release shortly after the software is shipped.

See Oracle Technology Network, <http://www.oracle.com/technology/documentation/psftent.html>

---

## Additional Resources

The following resources are located on Oracle's PeopleSoft Customer Connection website:

Resource	Navigation
Application maintenance information	Updates + Fixes
Business process diagrams	Support, Documentation, Business Process Maps



Resource	Navigation
Interactive Services Repository	Support, Documentation, Interactive Services Repository
Hardware and software requirements	Implement, Optimize + Upgrade; Implementation Guide; Implementation Documentation and Software; Hardware and Software Requirements
Installation guides	Implement, Optimize + Upgrade; Implementation Guide; Implementation Documentation and Software; Installation Guides and Notes
Integration information	Implement, Optimize + Upgrade; Implementation Guide; Implementation Documentation and Software; Pre-Built Integrations for PeopleSoft Enterprise and JD Edwards EnterpriseOne Applications
Minimum technical requirements (MTRs)	Implement, Optimize + Upgrade; Implementation Guide; Supported Platforms
Documentation updates	Support, Documentation, Documentation Updates
Implementation guides support policy	Support, Support Policy
Prerelease notes	Support, Documentation, Documentation Updates, Category, Release Notes
Product release roadmap	Support, Roadmaps + Schedules
Release notes	Support, Documentation, Documentation Updates, Category, Release Notes
Release value proposition	Support, Documentation, Documentation Updates, Category, Release Value Proposition
Statement of direction	Support, Documentation, Documentation Updates, Category, Statement of Direction
Troubleshooting information	Support, Troubleshooting
Upgrade documentation	Support, Documentation, Upgrade Documentation and Scripts

---

## Typographical Conventions and Visual Cues

This section discusses:

- Typographical conventions.
- Visual cues.
- Country, region, and industry identifiers.
- Currency codes.

## Typographical Conventions

This table contains the typographical conventions that are used in implementation guides:

Typographical Convention or Visual Cue	Description
<b>Bold</b>	Indicates PeopleCode function names, business function names, event names, system function names, method names, language constructs, and PeopleCode reserved words that must be included literally in the function call.
<i>Italics</i>	Indicates field values, emphasis, and JD Edwards EnterpriseOne or other book-length publication titles. In PeopleCode syntax, italic items are placeholders for arguments that your program must supply.  We also use italics when we refer to words as words or letters as letters, as in the following: Enter the letter <i>O</i> .
KEY+KEY	Indicates a key combination action. For example, a plus sign (+) between keys means that you must hold down the first key while you press the second key. For ALT+W, hold down the ALT key while you press the W key.
Monospace font	Indicates a PeopleCode program or other code example.
“ ” (quotation marks)	Indicate chapter titles in cross-references and words that are used differently from their intended meanings.
. . . (ellipses)	Indicate that the preceding item or series can be repeated any number of times in PeopleCode syntax.
{ } (curly braces)	Indicate a choice between two options in PeopleCode syntax. Options are separated by a pipe ( ).
[ ] (square brackets)	Indicate optional items in PeopleCode syntax.
& (ampersand)	When placed before a parameter in PeopleCode syntax, an ampersand indicates that the parameter is an already instantiated object.  Ampersands also precede all PeopleCode variables.

## Visual Cues

Implementation guides contain the following visual cues.

## Notes

Notes indicate information that you should pay particular attention to as you work with the JD Edwards EnterpriseOne system.

---

**Note.** Example of a note.

---

If the note is preceded by *Important!*, the note is crucial and includes information that concerns what you must do for the system to function properly.

---

**Important!** Example of an important note.

---

## Warnings

Warnings indicate crucial configuration considerations. Pay close attention to warning messages.

---

**Warning!** Example of a warning.

---

## Cross-References

Implementation guides provide cross-references either under the heading “See Also” or on a separate line preceded by the word *See*. Cross-references lead to other documentation that is pertinent to the immediately preceding documentation.

## Country, Region, and Industry Identifiers

Information that applies only to a specific country, region, or industry is preceded by a standard identifier in parentheses. This identifier typically appears at the beginning of a section heading, but it may also appear at the beginning of a note or other text.

Example of a country-specific heading: “(FRA) Hiring an Employee”

Example of a region-specific heading: “(Latin America) Setting Up Depreciation”

### Country Identifiers

Countries are identified with the International Organization for Standardization (ISO) country code.

### Region Identifiers

Regions are identified by the region name. The following region identifiers may appear in implementation guides:

- Asia Pacific
- Europe
- Latin America
- North America

### Industry Identifiers

Industries are identified by the industry name or by an abbreviation for that industry. The following industry identifiers may appear in implementation guides:

- USF (U.S. Federal)

- E&G (Education and Government)

## Currency Codes

Monetary amounts are identified by the ISO currency code.

---

## Comments and Suggestions

Your comments are important to us. We encourage you to tell us what you like, or what you would like to see changed about implementation guides and other Oracle reference and training materials. Please send your suggestions to your product line documentation manager at Oracle Corporation, 500 Oracle Parkway, Redwood Shores, CA 94065, U.S.A. Or email us at [appsdoc@us.oracle.com](mailto:appsdoc@us.oracle.com).

While we cannot guarantee to answer every email message, we will pay careful attention to your comments and suggestions.

---

## Common Fields Used in Implementation Guides

<b>Address Book Number</b>	Enter a unique number that identifies the master record for the entity. An address book number can be the identifier for a customer, supplier, company, employee, applicant, participant, tenant, location, and so on. Depending on the application, the field on the form might refer to the address book number as the customer number, supplier number, or company number, employee or applicant ID, participant number, and so on.
<b>As If Currency Code</b>	Enter the three-character code to specify the currency that you want to use to view transaction amounts. This code enables you to view the transaction amounts as if they were entered in the specified currency rather than the foreign or domestic currency that was used when the transaction was originally entered.
<b>Batch Number</b>	Displays a number that identifies a group of transactions to be processed by the system. On entry forms, you can assign the batch number or the system can assign it through the Next Numbers program (P0002).
<b>Batch Date</b>	Enter the date in which a batch is created. If you leave this field blank, the system supplies the system date as the batch date.
<b>Batch Status</b>	<p>Displays a code from user-defined code (UDC) table 98/IC that indicates the posting status of a batch. Values are:</p> <p><i>Blank:</i> Batch is unposted and pending approval.</p> <p><i>A:</i> The batch is approved for posting, has no errors and is in balance, but has not yet been posted.</p> <p><i>D:</i> The batch posted successfully.</p> <p><i>E:</i> The batch is in error. You must correct the batch before it can post.</p>

*P*: The system is in the process of posting the batch. The batch is unavailable until the posting process is complete. If errors occur during the post, the batch status changes to *E*.

*U*: The batch is temporarily unavailable because someone is working with it, or the batch appears to be in use because a power failure occurred while the batch was open.

<b>Branch/Plant</b>	Enter a code that identifies a separate entity as a warehouse location, job, project, work center, branch, or plant in which distribution and manufacturing activities occur. In some systems, this is called a business unit.
<b>Business Unit</b>	Enter the alphanumeric code that identifies a separate entity within a business for which you want to track costs. In some systems, this is called a branch/plant.
<b>Category Code</b>	Enter the code that represents a specific category code. Category codes are user-defined codes that you customize to handle the tracking and reporting requirements of your organization.
<b>Company</b>	Enter a code that identifies a specific organization, fund, or other reporting entity. The company code must already exist in the F0010 table and must identify a reporting entity that has a complete balance sheet.
<b>Currency Code</b>	Enter the three-character code that represents the currency of the transaction. JD Edwards EnterpriseOne provides currency codes that are recognized by the International Organization for Standardization (ISO). The system stores currency codes in the F0013 table.
<b>Document Company</b>	<p>Enter the company number associated with the document. This number, used in conjunction with the document number, document type, and general ledger date, uniquely identifies an original document.</p> <p>If you assign next numbers by company and fiscal year, the system uses the document company to retrieve the correct next number for that company.</p> <p>If two or more original documents have the same document number and document type, you can use the document company to display the document that you want.</p>
<b>Document Number</b>	Displays a number that identifies the original document, which can be a voucher, invoice, journal entry, or time sheet, and so on. On entry forms, you can assign the original document number or the system can assign it through the Next Numbers program.
<b>Document Type</b>	<p>Enter the two-character UDC, from UDC table 00/DT, that identifies the origin and purpose of the transaction, such as a voucher, invoice, journal entry, or time sheet. JD Edwards EnterpriseOne reserves these prefixes for the document types indicated:</p> <p><i>P</i>: Accounts payable documents.</p> <p><i>R</i>: Accounts receivable documents.</p> <p><i>T</i>: Time and pay documents.</p> <p><i>I</i>: Inventory documents.</p> <p><i>O</i>: Purchase order documents.</p> <p><i>S</i>: Sales order documents.</p>

**Effective Date**

Enter the date on which an address, item, transaction, or record becomes active. The meaning of this field differs, depending on the program. For example, the effective date can represent any of these dates:

- The date on which a change of address becomes effective.
- The date on which a lease becomes effective.
- The date on which a price becomes effective.
- The date on which the currency exchange rate becomes effective.
- The date on which a tax rate becomes effective.

**Fiscal Period and Fiscal Year**

Enter a number that identifies the general ledger period and year. For many programs, you can leave these fields blank to use the current fiscal period and year defined in the Company Names & Number program (P0010).

**G/L Date** (general ledger date)

Enter the date that identifies the financial period to which a transaction will be posted. The system compares the date that you enter on the transaction to the fiscal date pattern assigned to the company to retrieve the appropriate fiscal period number and year, as well as to perform date validations.

# JD Edwards EnterpriseOne Tools Web Services Gateway Order Promising Adapter Preface

This preface discusses Web Services Gateway (WSG) Order Promising Adapter companion documentation.

---

## Web Services Gateway Order Promising Adapter Companion Documentation

Additional, essential information describing the setup and design of Oracle's JD Edwards EnterpriseOne Tools WSG Order Promising Adapter resides in companion documentation. The companion documentation consists of important topics that apply to the Order Promising Adapter as well as other JD Edwards EnterpriseOne WSG Tools. You should be familiar with the contents of these companion guides:

- Web Services Gateway Integration Development Methodology
- Web Services Gateway Integration Server
- Web Services Gateway Developer

Customers must conform to the supported platforms for the release as detailed in the JD Edwards EnterpriseOne minimum technical requirements. In addition, JD Edwards EnterpriseOne may integrate, interface, or work in conjunction with other Oracle products. Refer to the cross-reference material in the Program Documentation at <http://oracle.com/contracts/index.html> for Program prerequisites and version cross-reference documents to assure compatibility of various Oracle products.

### See Also

*JD Edwards EnterpriseOne Tools 8.98 Web Services Gateway: Integration Development Methodology Guide*, "Getting Started with JD Edwards EnterpriseOne Tools Web Services Gateway Integration Development Methodology"

*webMethods Integration Server Administrator's Guide* on Oracle | PeopleSoft Customer Connection

*webMethods Developer User's Guide* on Oracle | PeopleSoft Customer Connection





# CHAPTER 1

## Getting Started with JD Edwards EnterpriseOne Tools Web Services Gateway Order Promising Adapter

This chapter discusses:

- Web Services Gateway Order Promising Adapter Overview
- Web Services Gateway Order Promising Adapter Implementation

---

### Web Services Gateway Order Promising Adapter Overview

Oracle's JD Edwards EnterpriseOne Tools Web Services Gateway (WSG) Order Promising Adapter provides a flexible, easy-to-use mechanism for WSG-enabled applications to interface with the JD Edwards EnterpriseOne Order Promising Application. For example, the adapter enables the exchange of information between the JD Edwards EnterpriseOne Order Promising Application and the JD Edwards EnterpriseOne Sales Order Application.

---

### Web Services Gateway Order Promising Adapter Implementation

This section provides an overview of the steps that are required to implement JD Edwards EnterpriseOne Tools Web Services Gateway Order Promising Adapter.

In the planning phase of the implementation, take advantage of all sources of information, including the installation guides and troubleshooting information. A complete list of these resources appears in the preface in *About This Documentation* with information about where to find the most current version of each.

### Web Services Gateway Order Promising Adapter Implementation Steps

This table lists the steps for the WSG Order Promising Adapter implementation:

Step	Reference
1. Install JD Edwards EnterpriseOne Tools 8.98	<i>JD Edwards EnterpriseOne Tools Release 8.98 Server Manager Guide</i> on Oracle PeopleSoft Customer Connection
2. Install JD Edwards EnterpriseOne Applications	<i>JD Edwards EnterpriseOne Applications Release 9.0 Installation Guide</i> on Oracle   PeopleSoft Customer Connection
3. Install Web Services Gateway	<i>JD Edwards EnterpriseOne 8.98 Web Services Gateway Installation and Setup Guide: Part 1—Installing Web Services Gateway Foundation</i> on Oracle   PeopleSoft Customer Connection
4. Configure the Order Promising Adapter	<i>JD Edwards EnterpriseOne 8.98 Web Services Gateway Installation and Setup Guide: Part 3—Configuring the JD Edwards Order Promising Adapter</i> on Oracle   PeopleSoft Customer Connection
5. Set up the Integration Server	<i>webMethods Integration Server Administrator's Guide</i>
6. Set up the Developer	<i>webMethods Developer User's Guide</i>

## CHAPTER 2

# Using the Order Promising Adapter

This chapter provides an overview of the Order Promising adapter and discusses how to:

- Develop integrations
- Create adapter services
- Create notification services

---

## Understanding the Order Promising Adapter

Oracle's JD Edwards EnterpriseOne Order Promising Adapter provides a flexible, easy-to-use mechanism for WSG-enabled applications to interface with the JD Edwards EnterpriseOne Order Promising application. The PSFT\_OP\_Adapter Package holds the Order Promising adapter. This Package is installed with the WSG server and WSG developer installation. The WSG Developer is a graphical development tool that you use to build, edit, and test integration logic. You use the WSG Developer to create these elements:

- Packages
- Folders
- Interface documents
- Adapter services
- Notification services
- Flow services
- Triggers

You create packages, folders, interface documents, flow services, and triggers in accordance with the instructions and guidelines provided in the WSG Developer User's guide. Naming conventions and other development standards are provided in the Integration Development Methodology guide. You use the WSG Developer tool to create adapter services and notification services. Adapter services and notification services are unique to the adapter and are discussed in detail in this chapter. You must create packages, folders, and interface documents before you create adapter services and notification services. You create flow services and triggers after you create the adapter services and notifications services.

### Packages

A package is a logical container for a set of services and related files. Each package exists as a single physical directory on the file system.

## Folders

A folder is a logical container for a set of artifacts within a package. The top-level folder is named the same as the package name to avoid naming conflicts. Additional folders are provided for each of the artifacts (for example, docs, triggers, and utils).

## Interface Documents

Interface documents provide the input and output to the flow services. You can create interface documents when you create a flow service, or you can create them as a separate activity. This table identifies the components of an interface document and provides a description of the components:

Component	Description
Document or Document List	Documents and document lists are collections of related fields. Any grouping with the interface document is defined as a document or a document list. Examples of each are: <ul style="list-style-type: none"> <li>• Header-document</li> <li>• Line-document list</li> </ul>
Fields	Fields are fundamental elements that you use to create documents and document lists. Fields are the lowest level elements defined. Example of fields are: <ul style="list-style-type: none"> <li>• Description</li> <li>• Name</li> </ul>

## Adapter Services

An adapter service connects to an adapter's resource and initiates an operation on the resource. The adapter provides service templates that you use to create the adapter services. This chapter discusses in detail how to create adapter services for the Order Promising adapter.

## Notification Services

A notification service enables an adapter to receive event data from the adapter's resource. For the Order Promising adapter, the outbound notifications template exposes events from the Order Promising server. This chapter discusses in detail how to create notification services for the JD Edwards EnterpriseOne adapter.

## Flow Services

A flow service describes the interaction between integration tasks and ties the integration logic together. The flow service is where the system creates the actual logic for the integration. The flow service generates the Web Service Definition Language (WSDL) for the web service. You call the adapter services in the flow to execute the business logic.

## Triggers

A trigger provides the link between the notification service and flow to execute when the real-time event is received from JD Edwards EnterpriseOne.

## Testing the Adapter Services

After you create the adapter services, you should use the WSG Developer tool to test them. In the Developer tool, select the service to be tested, then select Run from the Test menu and complete the information requested on the Input for Test window that appears. The request is sent to the Order Promising server. The Order Promising server returns a reply indicating that the test message was received.

### See Also

*JD Edwards EnterpriseOne Tools 8.98 Web Services Gateway: Integration Development Methodology Guide, "Understanding Development Conventions"*

*webMethods Developer User's Guide*

---

## Developing Integrations

Use these guidelines when developing integrations for the Order Promising adapter:

- Create only one adapter services package per Order Promising Server instance.

An adapter services package is a package in which you store configured services that are created from the service templates provided by the adapter. To simplify integration development, packaging, deployment, and the overall usability of the adapter and its associated integrations, it is highly recommended that you create only one configured adapter services package and use it across all integrations.

- Ensure that the adapter services package created for each instance of an Order Promising server contains only adapter services and no integrations.
- Ensure that all prepackaged integration flow services that are created and shipped use the preexisting adapter service package to communicate with the Order Promising server.
- Do not create more than one connection instance per Order Promising server instance.

Ensure that this connection instance resides in the same package in which the services that use it reside.

- Ensure that the TempWorkingFolder used by the connection instance is located inside the package in which the connection instance resides.

---

## Creating Adapter Services

This section provides an overview of adapter services and discusses how to:

- Create adapter services
- Review adapter service information

## Understanding Adapter Services

You use a service template to create an adapter service that performs a specific operation on a resource. For example, the Order Promising adapter provides a inbound service template for sending requests to and receiving responses from the Order Promising application server.

Naming standards and other development guidelines are provided in the Integration Development Methodology guide.

See *JD Edwards EnterpriseOne Tools 8.98 Web Services Gateway: Integration Development Methodology Guide*, "Understanding Development Conventions".

## Creating Adapter Services

The Inbound Service Template enables you to send a notification/request message to the Order Promising server. You can configure the Inbound Service Template to send any one of the four notification message types or a request message:

Message	Message Type
BeginningInventoryNotify	Notification
ProcurementNotify	Notification
SalesOrderNotify	Notification
WorkOrderNotify	Notification
SalesOrderQuery	Request

You use the WSG Developer tool to create the inbound service. Before you create an adapter service, create the necessary packages, folders, and interface documents.

Use these steps to create an adapter service:

1. From the WSG Developer tool File menu, select New.
2. Select Adapter Service as the element to create, and then click Next.  
The New Adapter Service window appears. The tasks on this window change when you click Next in each of the remaining steps.
3. For Select an Adapter Type, select Order Promising Adapter as the Adapter Type, and then click Next.
4. For Select an Adapter Connection Alias, select Connections:Sample\_Connection as the adapter connection name, and then click Next.
5. For Select a template, select Inbound Request/Notification Service as the template Name, and then click Next.
6. For Enter a name and select a folder, type a name for the message (for example, SalesOrderQuery) in the Name field, and then click Next.
7. Place the newly created adapter service in an Adapter Services Package in the Inbound\_Services folder, and then click Next.

A dialog box appears for the duration that the adapter is creating the service template.

When the template is instantiated and populated, you can use the Developer tool to review information about the newly created adapter service.

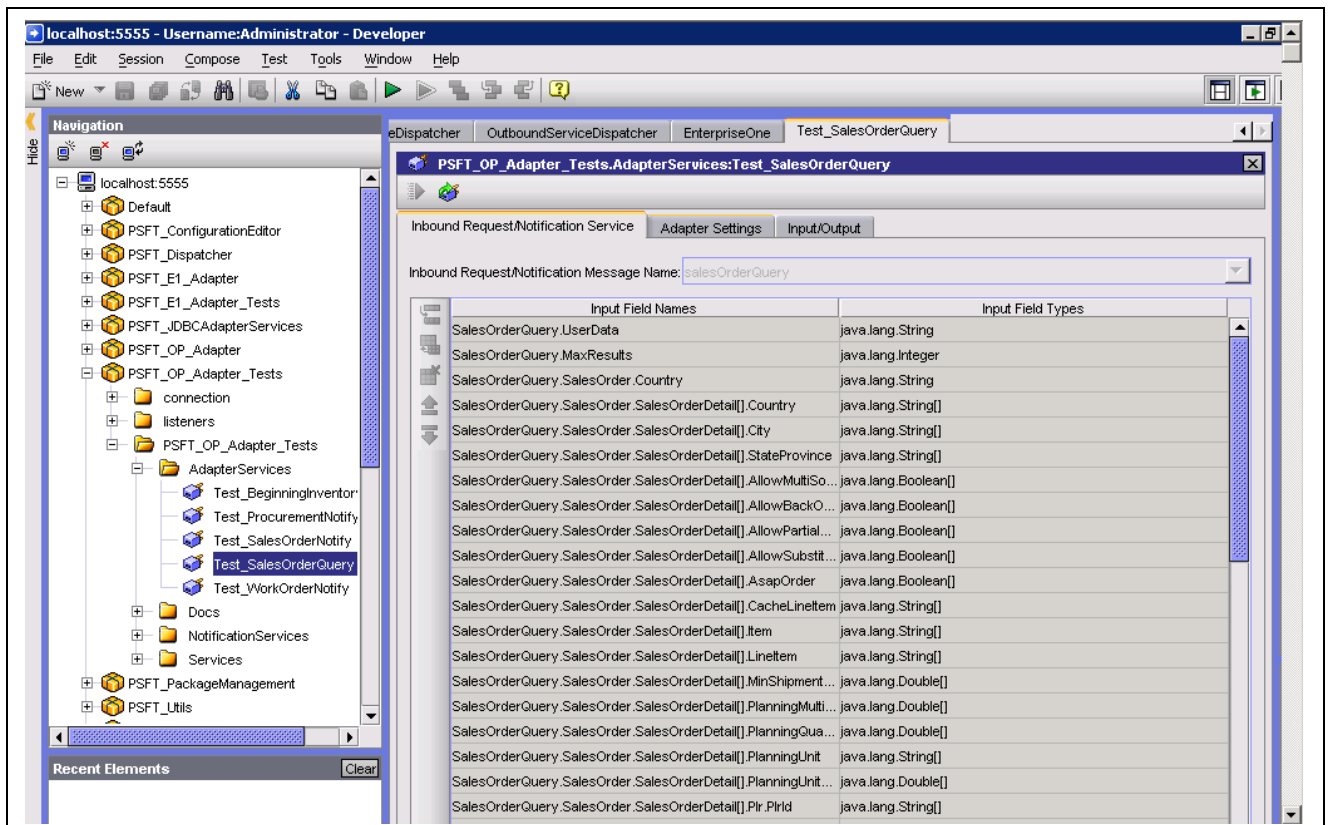
## Reviewing Adapter Service Information

After you create the adapter service, you can review the information about the service. You can review the messages that are available for sending to the Order Promising Server when you invoke this service instance. You can also review the information on the Adapter Settings tab and on the Input/Output tab.

### Adapter Service (SalesOrderQuery)

You can review the request messages that are available for sending to the Order Promising Server when you invoke the SalesOrderQuery service instance. You can only review the information on this tab; you cannot modify or delete this information.

To review the request messages that are available for the adapter service that you created, click the newly created service in the left pane of the Developer tool. The information appears in the right pane of the tool.



Adapter Services tab

1. In the right pane of the Developer tool, click the Inbound Request Notification Service tab.
2. Select the message, for example SalesOrderQuery, from the Inbound Request Notification Message Name drop-down list.
3. The Input Field Names column of the table displays the names of the input parameters of the service that you selected.
4. The Input Field Types column of the table displays the data types of each of the fields listed in the left-hand column.

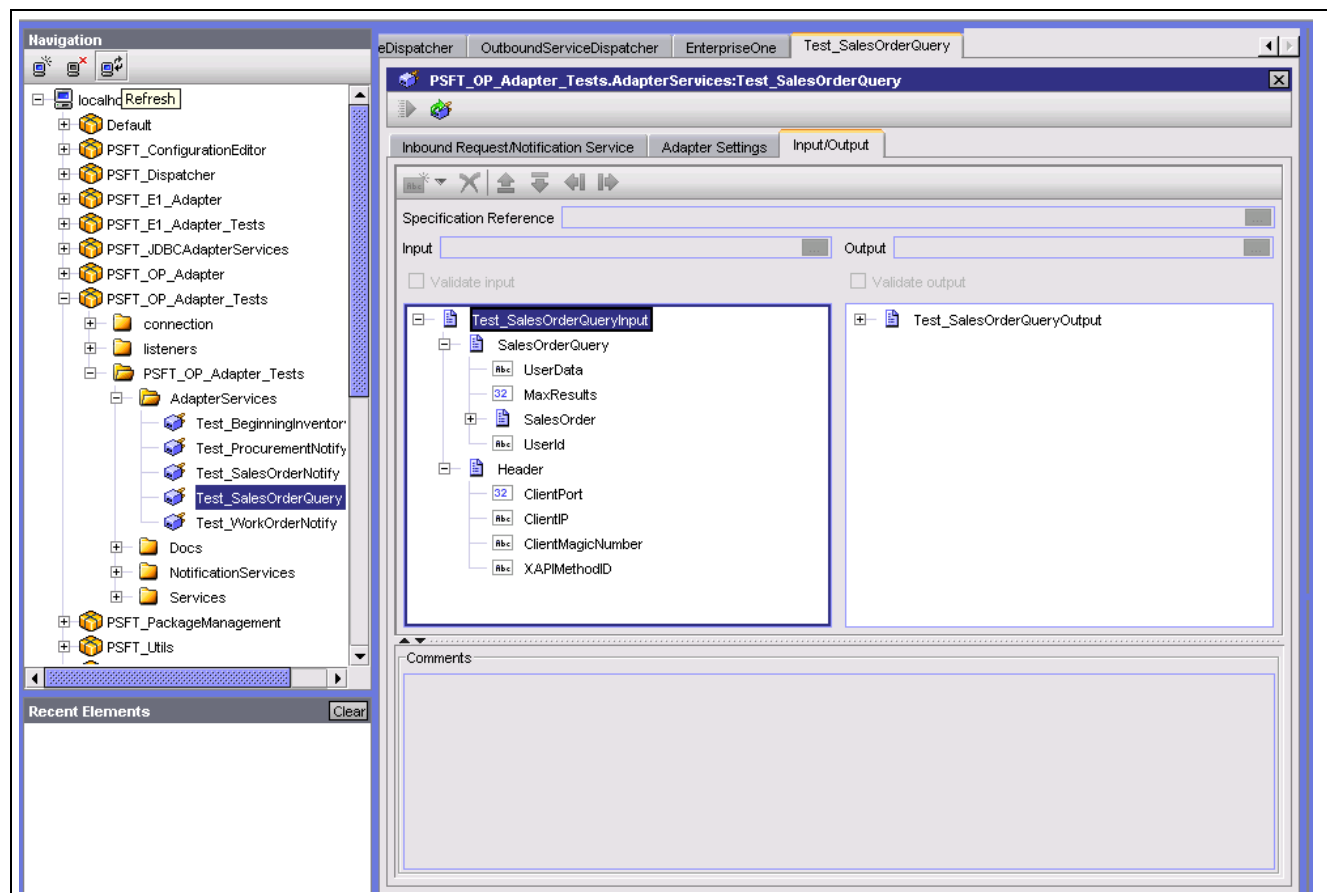
## Adapter Settings

Review these fields on the Adapter Settings tab. The values in these fields should be the values you selected when you created this adapter service. You can only review the information on this tab; you cannot modify or delete this information.

Name	Description
Adapter Name	Name of the adapter.
Adapter Connection Name	Name of the connection that you specified when you created the adapter service.
Adapter Service Template	Name of the template that you used to create the adapter service.

## Input/Output

The Input/Output tab shows the input interface document that was created based on the Inbound Request/Notification Message Name that you selected on the Inbound Request/Notification Service tab. You can only review the information on this tab; you cannot modify or delete this information.



Adapter Services Input/Output tab



Name	Description
Input	<p>The inputs for the SalesOrderQuery request message consists of two data structures:</p> <ul style="list-style-type: none"> <li>• SalesOrderQuery</li> <li>• Header</li> </ul> <p>The SalesOrderQuery data structure contains fields for sending a Sales Order Query to the Order Promising application. This is the same information that appears on the Inbound Request/Notification Service tab. The Header data structure contains fields for sending control information to the Order Promising Application</p> <p>The SalesOrderQuery message is the only inbound message that contains a header, as it represents a XAPI request. This header sends XAPI information to Order Promising. Other inbound messages such as SalesOrderNotify, WorkOrderNotify, ProcurementNotify, and BeginningInventoryNotify do not have a Header data structure in their input signatures.</p>
Output	<p>This service has only one output field, UNIQUE_MESSAGE_ID, which is a String type. You cannot change its name or data type.</p>

---

## Creating Notification Services

This section provides an overview of notification services and discusses how to:

- Create a response notification service.
- Review notification service information.
- Enable notification services.

## Understanding Notification Services

A notification service enables the order promising adapter to receive event data from the Order Promising application. The Outbound Notifications template exposes events from the Order Promising server. When you send a request to Order Promising, you should receive these two types of events:

- Response event
- Error event

A response event is a reply to a previously sent request. An error event is returned when a previously sent request could not be processed by Order Promising. Both types of events contain the unique ID of the request to which they correlate so that the client flow service can tie them together.

You must create a listener before you create a notification service. A listener is an object that connects to an adapter resource and waits for the resource to deliver data when an event occurs on the resource. Listeners work with listener notifications to detect and process event data on the adapter resource. You can tie both response and error notification service templates to the same listener instance.

---

**Note.** You should create only one instance of a response notification service, as all response notification services have exactly the same configuration. In addition, more than one instance of a response notification might confuse the user of these services because, depending on which instance appears first in the order of notifications maintained by the listener, only one of the response notifications will receive the response event.

---

Detail information for creating a listener is provided in the Order Promising adapter installation and configuration section of the Web Services Gateway Configuration and Installation guide.

Naming standards and other development guidelines are provided in the Integration Development Methodology guide.

## See Also

*JD Edwards EnterpriseOne Tools 8.98 Web Services Gateway: Integration Development Methodology Guide, "Understanding Development Conventions"*

*JD Edwards EnterpriseOne 8.98 Web Services Gateway Installation and Setup Guide: Part 3—Configuring the JD Edwards Order Promising Adapter on Oracle | PeopleSoft Customer Connection*

## Creating a Response Notification Service

You use the WSG Developer tool to create the outbound notification services. You use the Outbound Response Notification Template to create a notification response service so that the Order Promising adapter can receive a response from the Order Promising server. You use the Outbound Error Notification Template to create an error response service so that the Order Promising adapter can receive errors from the Order Promising server. You create notifications services after you create the adapter service and a listener.

Use these steps to create a notification service:

1. From the WSG Developer tool File menu, select New.
2. Select Adapter Notification as the element to create, and then click Next.  
The New Adapter Notification window appears. The tasks on this window change when you click Next in each of the remaining steps.
3. For Select an Adapter Type, select Order Promising Adapter as the adapter type, and then click Next.
4. For Select a Template, select Outbound Response Notification Template as the template, and then click Next.

If you are creating an error notification service, select Outbound Error Notification Template as the template.

5. For Select an Adapter Notification Listener, select the listener that you created, and then click Next.
6. For Enter a name and select a folder, type a name for the notification service, and then click Next.
7. Place the newly created notification service in an Notification Services Package in the Notification\_Services folder, and then click Next.

A message appears indicating that you should click Finish to create the notification and document. You must also enter a name for the associated document that will be created.

8. Click Finish to create the notification service and associated document.

The system creates the notification service and an associated document.

You should create both a Response Notification Service and an Error Notification Service. You can use the Developer tool to review information about the newly created notifications.

## Reviewing Notification Service Information

After you create the notification services, you can review information about these services. You can review the elements of the notification response message. You can also review the information on the Adapter Settings tab.

## Notification Service

As previously discussed, you should create only one instance of a response notification service. Therefore, only one outbound response message type exists in the Developer tool. You can review the elements for the outbound response message. You can only review the information on this tab; you cannot modify or delete this information.

1. To review the elements of the notification message, click the newly created notification service in the left pane of the Developer tool.
2. In the right pane, select the Response Notification Configuration Template tab and select *SalesOrderQueryResult* from the Outbound Response Message Name drop-down list box.
3. The Output Field Names column of the table displays the list of elements of the response message.
4. The Output Field Types column of the table displays the data type of each of the fields.
5. Double-click the Sample\_Response\_Notification PublishDocument element in the left-hand side explorer bar in WSG Developer.

The nested fields appear on the tree structure as composite child elements of the publishable document. The data types of each of the fields is the same as the data type that appears on the screen in step 4. The `_env` (envelope) field container is automatically added by the Integration Server and you can ignore it.

## Adapter Settings

Review these fields on the Adapter Settings tab. The values in these fields should be the values you selected when you created this notification service. You cannot edit the fields on this tab.

Name	Description
Adapter Name	The adapter that owns the notification service.
Adapter Listener Name	The event listener for the notification service.
Adapter Notification Template	The template that you used to set up the notification adapter service.

## Enabling Notification Services

Before you can receive the notifications, you must enable the notification. To enable a notification service, you use the Integration Server Administrator's console.

Use these steps to enable the notification server from the Integration Server:

1. On the Integration Server Administrator's console, click the Order Promising Adapter link under the Adapters heading on the left-hand navigation bar.  
An Order Promising Adapter page appears:
2. On the Order Promising Adapter page, click the Listener Notifications link on the left-hand navigation bar.  
An Order Promising Adapter Listener Notifications page appears, which shows the notification service with a No link appearing in the Enabled column.
3. To enable the notification, click the No link under the Enabled column.  
A dialog box appears that asks if it is OK to enable the notification service.
4. On the dialog box, click OK.

The No link changes to Yes, which enables the notification service.

---

**Note.** To disable a notification, click the Yes link under the Enabled column. The Yes link changes to No, and the notification service is now disabled.

---

After you create adapter services and notification services, you must create flow services and triggers. The WSG Developer User's guide provides information for creating and setting up flow services and triggers.

## CHAPTER 3

# Troubleshooting Guidelines for the Adapter

This chapter provides an overview of messages and error logs and discusses how to:

- Review messages on the Integration Server.
- Resolve starting a listener warning message.
- Resolve notification events not delivered.
- Resolve multiple notifications configured for the same listener.
- Resolve no templates available error message.

---

## Understanding Messages and Error Logs

Oracle's JD Edwards EnterpriseOne Order Promising Adapter supports two levels of logging: error and debug. When you start the Integration Server, you set the log level. Depending on the log level that you set for the Integration Server, the adapter will either log debug messages and error message, or it will log error messages only. The adapter writes messages to the Integration Server and Integration Server Error log files. You can review these log files from the Integration Server Administrator's Console.

### See Also

*webMethods Integration Server Administrator's Guide*

---

## Reviewing Messages on the Integration Server

When you start the Integration Server Administrator's Console, and you do not redirect the server log to the console, the Integration Server statistics page appears.

When you click the Server link under the Logs section, the server log page appears. The server log page shows log display controls and all of the server log entries as of a specific date and time. You can review the error logs if you click the Error link under the Logs section.

Notice that the server log screen shows the server log only if you have not redirected the server log to the console. If you have redirected the server log to the console, this message appears on the Integration Server log page:

```
Server Log redirected to console on startup.
```

To have the server log appear, shut down the Integration Server and restart it without redirecting the logging to the console.

---

## Resolving Starting a Listener Warning Message

Before you can receive notifications, you must start the listener. You start a listener from the Integration Server. Click the Listeners link under Order Promising Adapter. When you attempt to start a listener that does not have any notifications associated with it, you receive a warning message similar to this: 'Warning: No notifications for listener ...'

If you try to refresh the Listener page by clicking the Listener link again, the error message does not appear, but the Status column for the listener shows *Failed*.

To resolve this problem, configure a new notification service and associate it with the listener, enable the notification service, and then start the listener.

---

## Resolving Notification Events Not Delivered

The Order Promising adapter listeners are such that they will not start if you do not have any notification services configured to use them. If you have a running listener that is not publishing notifications to the configured notification services, make sure that the notifications associated with the listener are enabled. You use the Integration Server to determine whether listener notifications are enabled. Click the Listener Notifications link under Order Promising Adapter. The Enabled column for the listener notification service should be *Yes*.

If the notifications are not enabled, click the *No* link under the Enabled column to enable them. Then refresh the Listener Notifications link.

---

## Resolving Multiple Notifications Configured for the Same Listener

We strongly recommend that you do not create multiple notifications of the same type; that is, do not create more than one outbound response notification or more than one error notification for the same listener instance. Creating multiple notifications of the same type always results in a situation where only one of the notification services always receive the notification event. The Integration Server delivers a notification of a certain type (outbound response or outbound error) to the first notification service that is configured to receive that type of notification.

You use the Integration Server to view the notifications that are configured on a listener and the order in which they are configured to receive the notifications. To view the listener notifications from the Integration Server, click the Listeners link under Order Promising Adapter.

On the Order Promising Adapter Listeners page, disable the listener. The Enabled column should be *No*. To view the listener information, click the button under the Edit column.

When you click the Edit Notification Order link, a new pane that shows a list of notification services appears. This list shows all the notifications associated with the listener and the order in which the listener is configured to publish notifications to the configured templates. The default order is the same in which you created the notifications. You can change this order by using the UP and DOWN buttons.

If you have more than one outbound response notification, the first one always receives all of the outbound response notification events. If the notification service that you want to receive the response notifications is not first in this list, use the UP and DOWN buttons to bring it to the top of the list. To save the changes click the SAVE CHANGES button, and then restart the listener. The desired notification service will now receive all of the outbound response notifications. The same logic applies to the error notification services. The first error notification service in the list receives all error notification events from Order Promising (it does not have to be on the top of the list, but just the first of its type in the list). If the desired notification service is not receiving the error events, use the UP and DOWN buttons so that it is the first error notification in this list. Save the changes and restart the listener.

---

## Resolving No Templates Available Error Message

When you try to configure a new inbound adapter service or an outbound notification service template, you might get an error similar to this:

```
No templates are available for the selected item
```

This error does not indicate a defect in the adapter, but there is a problem with the Developer tool or the Integration Server. The easiest and the simplest solution is to restart the Integration Server and the Inbound Connection instance to the Order Promising Server and retry the failed operation.





# Glossary of JD Edwards EnterpriseOne Terms

<b>Accessor Methods/Assessors</b>	Java methods to “get” and “set” the elements of a value object or other source file.
<b>activity rule</b>	The criteria by which an object progresses from one given point to the next in a flow.
<b>add mode</b>	A condition of a form that enables users to input data.
<b>Advanced Planning Agent (APAg)</b>	A JD Edwards EnterpriseOne tool that can be used to extract, transform, and load enterprise data. APAg supports access to data sources in the form of relational databases, flat file format, and other data or message encoding, such as XML.
<b>alternate currency</b>	<p>A currency that is different from the domestic currency (when dealing with a domestic-only transaction) or the domestic and foreign currency of a transaction.</p> <p>In JD Edwards EnterpriseOne Financial Management, alternate currency processing enables you to enter receipts and payments in a currency other than the one in which they were issued.</p>
<b>Application Server</b>	Software that provides the business logic for an application program in a distributed environment. The servers can be Oracle Application Server (OAS) or WebSphere Application Server (WAS).
<b>as if processing</b>	A process that enables you to view currency amounts as if they were entered in a currency different from the domestic and foreign currency of the transaction.
<b>as of processing</b>	A process that is run as of a specific point in time to summarize transactions up to that date. For example, you can run various JD Edwards EnterpriseOne reports as of a specific date to determine balances and amounts of accounts, units, and so on as of that date.
<b>Auto Commit Transaction</b>	A database connection through which all database operations are immediately written to the database.
<b>back-to-back process</b>	A process in JD Edwards EnterpriseOne Supply Management that contains the same keys that are used in another process.
<b>batch processing</b>	<p>A process of transferring records from a third-party system to JD Edwards EnterpriseOne.</p> <p>In JD Edwards EnterpriseOne Financial Management, batch processing enables you to transfer invoices and vouchers that are entered in a system other than JD Edwards EnterpriseOne to JD Edwards EnterpriseOne Accounts Receivable and JD Edwards EnterpriseOne Accounts Payable, respectively. In addition, you can transfer address book information, including customer and supplier records, to JD Edwards EnterpriseOne.</p>
<b>batch server</b>	A server that is designated for running batch processing requests. A batch server typically does not contain a database nor does it run interactive applications.
<b>batch-of-one immediate</b>	<p>A transaction method that enables a client application to perform work on a client workstation, then submit the work all at once to a server application for further processing. As a batch process is running on the server, the client application can continue performing other tasks.</p> <p>See also direct connect and store-and-forward.</p>
<b>best practices</b>	Non-mandatory guidelines that help the developer make better design decisions.

<b>BPEL</b>	Abbreviation for <i>Business Process Execution Language</i> , a standard web services orchestration language, which enables you to assemble discrete services into an end-to-end process flow.
<b>BPEL PM</b>	Abbreviation for <i>Business Process Execution Language Process Manager</i> , a comprehensive infrastructure for creating, deploying, and managing BPEL business processes.
<b>Build Configuration File</b>	Configurable settings in a text file that are used by a build program to generate ANT scripts. ANT is a software tool used for automating build processes. These scripts build published business services.
<b>build engineer</b>	An actor that is responsible for building, mastering, and packaging artifacts. Some build engineers are responsible for building application artifacts, and some are responsible for building foundation artifacts.
<b>Build Program</b>	A WIN32 executable that reads build configuration files and generates an ANT script for building published business services.
<b>business analyst</b>	An actor that determines if and why an EnterpriseOne business service needs to be developed.
<b>business function</b>	A named set of user-created, reusable business rules and logs that can be called through event rules. Business functions can run a transaction or a subset of a transaction (check inventory, issue work orders, and so on). Business functions also contain the application programming interfaces (APIs) that enable them to be called from a form, a database trigger, or a non-JD Edwards EnterpriseOne application. Business functions can be combined with other business functions, forms, event rules, and other components to make up an application. Business functions can be created through event rules or third-generation languages, such as C. Examples of business functions include Credit Check and Item Availability.
<b>business function event rule</b>	See named event rule (NER).
<b>business service</b>	EnterpriseOne business logic written in Java. A business service is a collection of one or more artifacts. Unless specified otherwise, a business service implies both a published business service and business service.
<b>business service artifacts</b>	Source files, descriptors, and so on that are managed for business service development and are needed for the business service build process.
<b>business service class method</b>	A method that accesses resources provided by the business service framework.
<b>business service configuration files</b>	Configuration files include, but are not limited to, <code>interop.ini</code> , <code>JDBj.ini</code> , and <code>jdelog.properties</code> .
<b>business service cross reference</b>	A key and value data pair used during orchestration. Collectively refers to both the code and the key cross reference in the WSG/XPI based system.
<b>business service cross-reference utilities</b>	Utility services installed in a BPEL/ESB environment that are used to access JD Edwards EnterpriseOne orchestration cross-reference data.
<b>business service development environment</b>	A framework needed by an integration developer to develop and manage business services.
<b>business services development tool</b>	Otherwise known as JDeveloper.
<b>business service EnterpriseOne object</b>	A collection of artifacts managed by EnterpriseOne LCM tools. Named and represented within EnterpriseOne LCM similarly to other EnterpriseOne objects like tables, views, forms, and so on.

<b>business service framework</b>	Parts of the business service foundation that are specifically for supporting business service development.
<b>business service payload</b>	An object that is passed between an enterprise server and a business services server. The business service payload contains the input to the business service when passed to the business services server. The business service payload contains the results from the business service when passed to the Enterprise Server. In the case of notifications, the return business service payload contains the acknowledgement.
<b>business service property</b>	Key value data pairs used to control the behavior or functionality of business services.
<b>Business Service Property Admin Tool</b>	An EnterpriseOne application for developers and administrators to manage business service property records.
<b>business service property business service group</b>	A classification for business service property at the business service level. This is generally a business service name. A business service level contains one or more business service property groups. Each business service property group may contain zero or more business service property records.
<b>business service property categorization</b>	A way to categorize business service properties. These properties are categorized by business service.
<b>business service property key</b>	A unique name that identifies the business service property globally in the system.
<b>business service property utilities</b>	A utility API used in business service development to access EnterpriseOne business service property data.
<b>business service property value</b>	A value for a business service property.
<b>business service repository</b>	A source management system, for example ClearCase, where business service artifacts and build files are stored. Or, a physical directory in network.
<b>business services server</b>	The physical machine where the business services are located. Business services are run on an application server instance.
<b>business services source file or business service class</b>	One type of business service artifact. A text file with the .java file type written to be compiled by a Java compiler.
<b>business service value object template</b>	The structural representation of a business service value object used in a C-business function.
<b>Business Service Value Object Template Utility</b>	A utility used to create a business service value object template from a business service value object.
<b>business services server artifact</b>	The object to be deployed to the business services server.
<b>business view</b>	A means for selecting specific columns from one or more JD Edwards EnterpriseOne application tables whose data is used in an application or report. A business view does not select specific rows, nor does it contain any actual data. It is strictly a view through which you can manipulate data.
<b>central objects merge</b>	A process that blends a customer's modifications to the objects in a current release with objects in a new release.
<b>central server</b>	A server that has been designated to contain the originally installed version of the software (central objects) for deployment to client computers. In a typical JD Edwards EnterpriseOne installation, the software is loaded on to one machine—the central server. Then, copies of the software are pushed out or downloaded to various workstations attached to it. That way, if the software is altered or corrupted through its use on workstations, an original set of objects (central objects) is always available on the central server.

<b>charts</b>	Tables of information in JD Edwards EnterpriseOne that appear on forms in the software.
<b>check-in repository</b>	A repository for developers to check in and check out business service artifacts. There are multiple check-in repositories. Each can be used for a different purpose (for example, development, production, testing, and so on).
<b>connector</b>	Component-based interoperability model that enables third-party applications and JD Edwards EnterpriseOne to share logic and data. The JD Edwards EnterpriseOne connector architecture includes Java and COM connectors.
<b>contra/clearing account</b>	A general ledger account in JD Edwards EnterpriseOne Financial Management that is used by the system to offset (balance) journal entries. For example, you can use a contra/clearing account to balance the entries created by allocations in JD Edwards EnterpriseOne Financial Management.
<b>Control Table Workbench</b>	An application that, during the Installation Workbench processing, runs the batch applications for the planned merges that update the data dictionary, user-defined codes, menus, and user override tables.
<b>control tables merge</b>	A process that blends a customer's modifications to the control tables with the data that accompanies a new release.
<b>correlation data</b>	The data used to tie HTTP responses with requests that consist of business service name and method.
<b>cost assignment</b>	The process in JD Edwards EnterpriseOne Advanced Cost Accounting of tracing or allocating resources to activities or cost objects.
<b>cost component</b>	In JD Edwards EnterpriseOne Manufacturing, an element of an item's cost (for example, material, labor, or overhead).
<b>credentials</b>	A valid set of JD Edwards EnterpriseOne username/password/environment/role, EnterpriseOne session, or EnterpriseOne token.
<b>cross-reference utility services</b>	Utility services installed in a BPEL/ESB environment that access EnterpriseOne cross-reference data.
<b>cross segment edit</b>	A logic statement that establishes the relationship between configured item segments. Cross segment edits are used to prevent ordering of configurations that cannot be produced.
<b>currency restatement</b>	The process of converting amounts from one currency into another currency, generally for reporting purposes. You can use the currency restatement process, for example, when many currencies must be restated into a single currency for consolidated reporting.
<b>cXML</b>	A protocol used to facilitate communication between business documents and procurement applications, and between e-commerce hubs and suppliers.
<b>database credentials</b>	A valid database username/password.
<b>database server</b>	A server in a local area network that maintains a database and performs searches for client computers.
<b>Data Source Workbench</b>	An application that, during the Installation Workbench process, copies all data sources that are defined in the installation plan from the Data Source Master and Table and Data Source Sizing tables in the Planner data source to the system-release number data source. It also updates the Data Source Plan detail record to reflect completion.
<b>date pattern</b>	A calendar that represents the beginning date for the fiscal year and the ending date for each period in that year in standard and 52-period accounting.

<b>denominated-in currency</b>	The company currency in which financial reports are based.
<b>deployment artifacts</b>	Artifacts that are needed for the deployment process, such as servers, ports, and such.
<b>deployment server</b>	A server that is used to install, maintain, and distribute software to one or more enterprise servers and client workstations.
<b>detail information</b>	Information that relates to individual lines in JD Edwards EnterpriseOne transactions (for example, voucher pay items and sales order detail lines).
<b>direct connect</b>	A transaction method in which a client application communicates interactively and directly with a server application.  See also batch-of-one immediate and store-and-forward.
<b>Do Not Translate (DNT)</b>	A type of data source that must exist on the iSeries because of BLOB restrictions.
<b>dual pricing</b>	The process of providing prices for goods and services in two currencies.
<b>duplicate published business services authorization records</b>	Two published business services authorization records with the same user identification information and published business services identification information.
<b>embedded application server instance</b>	An OC4J instance started by and running wholly within JDeveloper.
<b>edit code</b>	A code that indicates how a specific value for a report or a form should appear or be formatted. The default edit codes that pertain to reporting require particular attention because they account for a substantial amount of information.
<b>edit mode</b>	A condition of a form that enables users to change data.
<b>edit rule</b>	A method used for formatting and validating user entries against a predefined rule or set of rules.
<b>Electronic Data Interchange (EDI)</b>	An interoperability model that enables paperless computer-to-computer exchange of business transactions between JD Edwards EnterpriseOne and third-party systems. Companies that use EDI must have translator software to convert data from the EDI standard format to the formats of their computer systems.
<b>embedded event rule</b>	An event rule that is specific to a particular table or application. Examples include form-to-form calls, hiding a field based on a processing option value, and calling a business function. Contrast with the business function event rule.
<b>Employee Work Center</b>	A central location for sending and receiving all JD Edwards EnterpriseOne messages (system and user generated), regardless of the originating application or user. Each user has a mailbox that contains workflow and other messages, including Active Messages.
<b>enterprise server</b>	A server that contains the database and the logic for JD Edwards EnterpriseOne.
<b>Enterprise Service Bus (ESB)</b>	Middleware infrastructure products or technologies based on web services standards that enable a service-oriented architecture using an event-driven and XML-based messaging framework (the bus).
<b>EnterpriseOne administrator</b>	An actor responsible for the EnterpriseOne administration system.
<b>EnterpriseOne credentials</b>	A user ID, password, environment, and role used to validate a user of EnterpriseOne.
<b>EnterpriseOne object</b>	A reusable piece of code that is used to build applications. Object types include tables, forms, business functions, data dictionary items, batch processes, business views, event rules, versions, data structures, and media objects.

<b>EnterpriseOne development client</b>	Historically called “fat client,” a collection of installed EnterpriseOne components required to develop EnterpriseOne artifacts, including the Microsoft Windows client and design tools.
<b>EnterpriseOne extension</b>	A JDeveloper component (plug-in) specific to EnterpriseOne. A JDeveloper wizard is a specific example of an extension.
<b>EnterpriseOne process</b>	A software process that enables JD Edwards EnterpriseOne clients and servers to handle processing requests and run transactions. A client runs one process, and servers can have multiple instances of a process. JD Edwards EnterpriseOne processes can also be dedicated to specific tasks (for example, workflow messages and data replication) to ensure that critical processes don’t have to wait if the server is particularly busy.
<b>EnterpriseOne resource</b>	Any EnterpriseOne table, metadata, business function, dictionary information, or other information restricted to authorized users.
<b>Environment Workbench</b>	An application that, during the Installation Workbench process, copies the environment information and Object Configuration Manager tables for each environment from the Planner data source to the system-release number data source. It also updates the Environment Plan detail record to reflect completion.
<b>escalation monitor</b>	A batch process that monitors pending requests or activities and restarts or forwards them to the next step or user after they have been inactive for a specified amount of time.
<b>event rule</b>	A logic statement that instructs the system to perform one or more operations based on an activity that can occur in a specific application, such as entering a form or exiting a field.
<b>explicit transaction</b>	Transaction used by a business service developer to explicitly control the type (auto or manual) and the scope of transaction boundaries within a business service.
<b>exposed method or value object</b>	Published business service source files or parts of published business service source files that are part of the published interface. These are part of the contract with the customer.
<b>facility</b>	An entity within a business for which you want to track costs. For example, a facility might be a warehouse location, job, project, work center, or branch/plant. A facility is sometimes referred to as a “business unit.”
<b>fast path</b>	A command prompt that enables the user to move quickly among menus and applications by using specific commands.
<b>file server</b>	A server that stores files to be accessed by other computers on the network. Unlike a disk server, which appears to the user as a remote disk drive, a file server is a sophisticated device that not only stores files, but also manages them and maintains order as network users request files and make changes to these files.
<b>final mode</b>	The report processing mode of a processing mode of a program that updates or creates data records.
<b>foundation</b>	A framework that must be accessible for execution of business services at runtime. This includes, but is not limited to, the Java Connector and JDBj.
<b>FTP server</b>	A server that responds to requests for files via file transfer protocol.
<b>header information</b>	Information at the beginning of a table or form. Header information is used to identify or provide control information for the group of records that follows.
<b>HTTP Adapter</b>	A generic set of services that are used to do the basic HTTP operations, such as GET, POST, PUT, DELETE, TRACE, HEAD, and OPTIONS with the provided URL.

<b>instantiate</b>	A Java term meaning “to create.” When a class is instantiated, a new instance is created.
<b>integration developer</b>	The user of the system who develops, runs, and debugs the EnterpriseOne business services. The integration developer uses the EnterpriseOne business services to develop these components.
<b>integration point (IP)</b>	The business logic in previous implementations of EnterpriseOne that exposes a document level interface. This type of logic used to be called XBPs. In EnterpriseOne 8.11, IPs are implemented in Web Services Gateway powered by webMethods.
<b>integration server</b>	A server that facilitates interaction between diverse operating systems and applications across internal and external networked computer systems.
<b>integrity test</b>	A process used to supplement a company’s internal balancing procedures by locating and reporting balancing problems and data inconsistencies.
<b>interface table</b>	See Z table.
<b>internal method or value object</b>	Business service source files or parts of business service source files that are not part of the published interface. These could be private or protected methods. These could be value objects not used in published methods.
<b>interoperability model</b>	A method for third-party systems to connect to or access JD Edwards EnterpriseOne.
<b>in-your-face-error</b>	In JD Edwards EnterpriseOne, a form-level property which, when enabled, causes the text of application errors to appear on the form.
<b>IServer service</b>	This internet server service resides on the web server and is used to speed up delivery of the Java class files from the database to the client.
<b>jargon</b>	An alternative data dictionary item description that JD Edwards EnterpriseOne appears based on the product code of the current object.
<b>Java application server</b>	A component-based server that resides in the middle-tier of a server-centric architecture. This server provides middleware services for security and state maintenance, along with data access and persistence.
<b>JDBNET</b>	A database driver that enables heterogeneous servers to access each other’s data.
<b>JDEBASE Database Middleware</b>	A JD Edwards EnterpriseOne proprietary database middleware package that provides platform-independent APIs, along with client-to-server access.
<b>JDECallObject</b>	An API used by business functions to invoke other business functions.
<b>jde.ini</b>	A JD Edwards EnterpriseOne file (or member for iSeries) that provides the runtime settings required for JD Edwards EnterpriseOne initialization. Specific versions of the file or member must reside on every machine running JD Edwards EnterpriseOne. This includes workstations and servers.
<b>JDEIPC</b>	Communications programming tools used by server code to regulate access to the same data in multiprocess environments, communicate and coordinate between processes, and create new processes.
<b>jde.log</b>	The main diagnostic log file of JD Edwards EnterpriseOne. This file is always located in the root directory on the primary drive and contains status and error messages from the startup and operation of JD Edwards EnterpriseOne.
<b>JDENET</b>	A JD Edwards EnterpriseOne proprietary communications middleware package. This package is a peer-to-peer, message-based, socket-based, multiprocess communications middleware solution. It handles client-to-server and server-to-server communications for all JD Edwards EnterpriseOne supported platforms.
<b>JDeveloper Project</b>	An artifact that JDeveloper uses to categorize and compile source files.

<b>JDeveloper Workspace</b>	An artifact that JDeveloper uses to organize project files. It contains one or more project files.
<b>JMS Queue</b>	A Java Messaging service queue used for point-to-point messaging.
<b>listener service</b>	A listener that listens for XML messages over HTTP.
<b>local repository</b>	A developer's local development environment that is used to store business service artifacts.
<b>local standalone BPEL/ESB server</b>	A standalone BPEL/ESB server that is not installed within an application server.
<b>Location Workbench</b>	An application that, during the Installation Workbench process, copies all locations that are defined in the installation plan from the Location Master table in the Planner data source to the system data source.
<b>logic server</b>	A server in a distributed network that provides the business logic for an application program. In a typical configuration, pristine objects are replicated on to the logic server from the central server. The logic server, in conjunction with workstations, actually performs the processing required when JD Edwards EnterpriseOne software runs.
<b>MailMerge Workbench</b>	An application that merges Microsoft Word 6.0 (or higher) word-processing documents with JD Edwards EnterpriseOne records to automatically print business documents. You can use MailMerge Workbench to print documents, such as form letters about verification of employment.
<b>Manual Commit transaction</b>	A database connection where all database operations delay writing to the database until a call to commit is made.
<b>master business function (MBF)</b>	An interactive master file that serves as a central location for adding, changing, and updating information in a database. Master business functions pass information between data entry forms and the appropriate tables. These master functions provide a common set of functions that contain all of the necessary default and editing rules for related programs. MBFs contain logic that ensures the integrity of adding, updating, and deleting information from databases.
<b>master table</b>	See published table.
<b>matching document</b>	A document associated with an original document to complete or change a transaction. For example, in JD Edwards EnterpriseOne Financial Management, a receipt is the matching document of an invoice, and a payment is the matching document of a voucher.
<b>media storage object</b>	Files that use one of the following naming conventions that are not organized into table format: Gxxx, xxxGT, or GTxxx.
<b>message center</b>	A central location for sending and receiving all JD Edwards EnterpriseOne messages (system and user generated), regardless of the originating application or user.
<b>messaging adapter</b>	An interoperability model that enables third-party systems to connect to JD Edwards EnterpriseOne to exchange information through the use of messaging queues.
<b>messaging server</b>	A server that handles messages that are sent for use by other programs using a messaging API. Messaging servers typically employ a middleware program to perform their functions.
<b>Middle-Tier BPEL/ESB Server</b>	A BPEL/ESB server that is installed within an application server.
<b>Monitoring Application</b>	An EnterpriseOne tool provided for an administrator to get statistical information for various EnterpriseOne servers, reset statistics, and set notifications.



<b>named event rule (NER)</b>	Encapsulated, reusable business logic created using event rules, rather than C programming. NERs are also called business function event rules. NERs can be reused in multiple places by multiple programs. This modularity lends itself to streamlining, reusability of code, and less work.
<b><i>nota fiscal</i></b>	In Brazil, a legal document that must accompany all commercial transactions for tax purposes and that must contain information required by tax regulations.
<b><i>nota fiscal factura</i></b>	In Brazil, a <i>nota fiscal</i> with invoice information. See also <i>nota fiscal</i> .
<b>Object Configuration Manager (OCM)</b>	In JD Edwards EnterpriseOne, the object request broker and control center for the runtime environment. OCM keeps track of the runtime locations for business functions, data, and batch applications. When one of these objects is called, OCM directs access to it using defaults and overrides for a given environment and user.
<b>Object Librarian</b>	A repository of all versions, applications, and business functions reusable in building applications. Object Librarian provides check-out and check-in capabilities for developers, and it controls the creation, modification, and use of JD Edwards EnterpriseOne objects. Object Librarian supports multiple environments (such as production and development) and enables objects to be easily moved from one environment to another.
<b>Object Librarian merge</b>	A process that blends any modifications to the Object Librarian in a previous release into the Object Librarian in a new release.
<b>Open Data Access (ODA)</b>	An interoperability model that enables you to use SQL statements to extract JD Edwards EnterpriseOne data for summarization and report generation.
<b>Output Stream Access (OSA)</b>	An interoperability model that enables you to set up an interface for JD Edwards EnterpriseOne to pass data to another software package, such as Microsoft Excel, for processing.
<b>package</b>	JD Edwards EnterpriseOne objects are installed to workstations in packages from the deployment server. A package can be compared to a bill of material or kit that indicates the necessary objects for that workstation and where on the deployment server the installation program can find them. It is point-in-time snapshot of the central objects on the deployment server.
<b>package build</b>	A software application that facilitates the deployment of software changes and new applications to existing users. Additionally, in JD Edwards EnterpriseOne, a package build can be a compiled version of the software. When you upgrade your version of the ERP software, for example, you are said to take a package build.  Consider the following context: “Also, do not transfer business functions into the production path code until you are ready to deploy, because a global build of business functions done during a package build will automatically include the new functions.” The process of creating a package build is often referred to, as it is in this example, simply as “a package build.”
<b>package location</b>	The directory structure location for the package and its set of replicated objects. This is usually \\deployment server\release\path_code\package\package name. The subdirectories under this path are where the replicated objects for the package are placed. This is also referred to as where the package is built or stored.
<b>Package Workbench</b>	An application that, during the Installation Workbench process, transfers the package information tables from the Planner data source to the system-release number data source. It also updates the Package Plan detail record to reflect completion.
<b>Pathcode Directory</b>	The specific portion of the file system on the EnterpriseOne development client where EnterpriseOne development artifacts are stored.

<b>patterns</b>	General repeatable solutions to a commonly occurring problem in software design. For business service development, the focus is on the object relationships and interactions. For orchestrations, the focus is on the integration patterns (for example, synchronous and asynchronous request/response, publish, notify, and receive/reply).
<b>planning family</b>	A means of grouping end items whose similarity of design and manufacture facilitates being planned in aggregate.
<b>preference profile</b>	The ability to define default values for specified fields for a user-defined hierarchy of items, item groups, customers, and customer groups.
<b>print server</b>	The interface between a printer and a network that enables network clients to connect to the printer and send their print jobs to it. A print server can be a computer, separate hardware device, or even hardware that resides inside of the printer itself.
<b>pristine environment</b>	A JD Edwards EnterpriseOne environment used to test unaltered objects with JD Edwards EnterpriseOne demonstration data or for training classes. You must have this environment so that you can compare pristine objects that you modify.
<b>processing option</b>	A data structure that enables users to supply parameters that regulate the running of a batch program or report. For example, you can use processing options to specify default values for certain fields, to determine how information appears or is printed, to specify date ranges, to supply runtime values that regulate program execution, and so on.
<b>production environment</b>	A JD Edwards EnterpriseOne environment in which users operate EnterpriseOne software.
<b>production-grade file server</b>	A file server that has been quality assurance tested and commercialized and that is usually provided in conjunction with user support services.
<b>Production Published Business Services Web Service</b>	Published business services web service deployed to a production application server.
<b>program temporary fix (PTF)</b>	A representation of changes to JD Edwards EnterpriseOne software that your organization receives on magnetic tapes or disks.
<b>project</b>	In JD Edwards EnterpriseOne, a virtual container for objects being developed in Object Management Workbench.
<b>promotion path</b>	<p>The designated path for advancing objects or projects in a workflow. The following is the normal promotion cycle (path):</p> <p>11&gt;21&gt;26&gt;28&gt;38&gt;01</p> <p>In this path, <i>11</i> equals new project pending review, <i>21</i> equals programming, <i>26</i> equals QA test/review, <i>28</i> equals QA test/review complete, <i>38</i> equals in production, <i>01</i> equals complete. During the normal project promotion cycle, developers check objects out of and into the development path code and then promote them to the prototype path code. The objects are then moved to the productions path code before declaring them complete.</p>
<b>proxy server</b>	A server that acts as a barrier between a workstation and the internet so that the enterprise can ensure security, administrative control, and caching service.
<b>published business service</b>	EnterpriseOne service level logic and interface. A classification of a published business service indicating the intention to be exposed to external (non-EnterpriseOne) systems.
<b>published business service identification information</b>	Information about a published business service used to determine relevant authorization records. Published business services + method name, published business services, or *ALL.

<b>published business service web service</b>	Published business services components packaged as J2EE Web Service (namely, a J2EE EAR file that contains business service classes, business service foundation, configuration files, and web service artifacts).
<b>published table</b>	Also called a master table, this is the central copy to be replicated to other machines. Residing on the publisher machine, the F98DRPUB table identifies all of the published tables and their associated publishers in the enterprise.
<b>publisher</b>	The server that is responsible for the published table. The F98DRPUB table identifies all of the published tables and their associated publishers in the enterprise.
<b>pull replication</b>	One of the JD Edwards EnterpriseOne methods for replicating data to individual workstations. Such machines are set up as pull subscribers using JD Edwards EnterpriseOne data replication tools. The only time that pull subscribers are notified of changes, updates, and deletions is when they request such information. The request is in the form of a message that is sent, usually at startup, from the pull subscriber to the server machine that stores the F98DRPCN table.
<b>QBE</b>	An abbreviation for <i>query by example</i> . In JD Edwards EnterpriseOne, the QBE line is the top line on a detail area that is used for filtering data.
<b>real-time event</b>	A message triggered from EnterpriseOne application logic that is intended for external systems to consume.
<b>refresh</b>	A function used to modify JD Edwards EnterpriseOne software, or subset of it, such as a table or business data, so that it functions at a new release or cumulative update level, such as B73.2 or B73.2.1.
<b>replication server</b>	A server that is responsible for replicating central objects to client machines.
<b>Rt-Addressing</b>	Unique data identifying a browser session that initiates the business services call request host/port user session.
<b>rules</b>	Mandatory guidelines that are not enforced by tooling, but must be followed in order to accomplish the desired results and to meet specified standards.
<b>quote order</b>	In JD Edwards Procurement and Subcontract Management, a request from a supplier for item and price information from which you can create a purchase order.  In JD Edwards Sales Order Management, item and price information for a customer who has not yet committed to a sales order.
<b>secure by default</b>	A security model that assumes that a user does not have permission to execute an object unless there is a specific record indicating such permissions.
<b>Secure Socket Layer (SSL)</b>	A security protocol that provides communication privacy. SSL enables client and server applications to communicate in a way that is designed to prevent eavesdropping, tampering, and message forgery.
<b>SEI implementation</b>	A Java class that implements the methods that declare in a Service Endpoint Interface (SEI).
<b>selection</b>	Found on JD Edwards EnterpriseOne menus, a selection represents functions that you can access from a menu. To make a selection, type the associated number in the Selection field and press Enter.
<b>serialize</b>	The process of converting an object or data into a format for storage or transmission across a network connection link with the ability to reconstruct the original data or objects when needed.
<b>Server Workbench</b>	An application that, during the Installation Workbench process, copies the server configuration files from the Planner data source to the system-release number

	data source. The application also updates the Server Plan detail record to reflect completion.
<b>Service Endpoint Interface (SEI)</b>	A Java interface that declares the methods that a client can invoke on the service.
<b>SOA</b>	Abbreviation for <i>Service Oriented Architecture</i> .
<b>softcoding</b>	A coding technique that enables an administrator to manipulate site-specific variables that affect the execution of a given process.
<b>source repository</b>	A repository for HTTP adapter and listener service development environment artifacts.
<b>spot rate</b>	An exchange rate entered at the transaction level. This rate overrides the exchange rate that is set up between two currencies.
<b>Specification merge</b>	A merge that comprises three merges: Object Librarian merge, Versions List merge, and Central Objects merge. The merges blend customer modifications with data that accompanies a new release.
<b>specification</b>	A complete description of a JD Edwards EnterpriseOne object. Each object has its own specification, or name, which is used to build applications.
<b>Specification Table Merge Workbench</b>	An application that, during the Installation Workbench process, runs the batch applications that update the specification tables.
<b>SSL Certificate</b>	A special message signed by a certificate authority that contains the name of a user and that user's public key in such a way that anyone can "verify" that the message was signed by no one other than the certification authority and thereby develop trust in the user's public key.
<b>store-and-forward</b>	The mode of processing that enables users who are disconnected from a server to enter transactions and then later connect to the server to upload those transactions.
<b>subscriber table</b>	Table F98DRSUB, which is stored on the publisher server with the F98DRPUB table and identifies all of the subscriber machines for each published table.
<b>superclass</b>	An inheritance concept of the Java language where a class is an instance of something, but is also more specific. "Tree" might be the superclass of "Oak" and "Elm," for example.
<b>supplemental data</b>	<p>Any type of information that is not maintained in a master file. Supplemental data is usually additional information about employees, applicants, requisitions, and jobs (such as an employee's job skills, degrees, or foreign languages spoken). You can track virtually any type of information that your organization needs.</p> <p>For example, in addition to the data in the standard master tables (the Address Book Master, Customer Master, and Supplier Master tables), you can maintain other kinds of data in separate, generic databases. These generic databases enable a standard approach to entering and maintaining supplemental data across JD Edwards EnterpriseOne systems.</p>
<b>table access management (TAM)</b>	The JD Edwards EnterpriseOne component that handles the storage and retrieval of use-defined data. TAM stores information, such as data dictionary definitions; application and report specifications; event rules; table definitions; business function input parameters and library information; and data structure definitions for running applications, reports, and business functions.
<b>Table Conversion Workbench</b>	An interoperability model that enables the exchange of information between JD Edwards EnterpriseOne and third-party systems using non-JD Edwards EnterpriseOne tables.

<b>table conversion</b>	An interoperability model that enables the exchange of information between JD Edwards EnterpriseOne and third-party systems using non-JD Edwards EnterpriseOne tables.
<b>table event rules</b>	Logic that is attached to database triggers that runs whenever the action specified by the trigger occurs against the table. Although JD Edwards EnterpriseOne enables event rules to be attached to application events, this functionality is application specific. Table event rules provide embedded logic at the table level.
<b>terminal server</b>	A server that enables terminals, microcomputers, and other devices to connect to a network or host computer or to devices attached to that particular computer.
<b>three-tier processing</b>	The task of entering, reviewing and approving, and posting batches of transactions in JD Edwards EnterpriseOne.
<b>three-way voucher match</b>	In JD Edwards Procurement and Subcontract Management, the process of comparing receipt information to supplier's invoices to create vouchers. In a three-way match, you use the receipt records to create vouchers.
<b>transaction processing (TP) monitor</b>	A monitor that controls data transfer between local and remote terminals and the applications that originated them. TP monitors also protect data integrity in the distributed environment and may include programs that validate data and format terminal screens.
<b>transaction processing method</b>	A method related to the management of a manual commit transaction boundary (for example, start, commit, rollback, and cancel).
<b>transaction set</b>	An electronic business transaction (electronic data interchange standard document) made up of segments.
<b>trigger</b>	One of several events specific to data dictionary items. You can attach logic to a data dictionary item that the system processes automatically when the event occurs.
<b>triggering event</b>	A specific workflow event that requires special action or has defined consequences or resulting actions.
<b>two-way authentication</b>	An authentication mechanism in which both client and server authenticate themselves by providing the SSL certificates to each other.
<b>two-way voucher match</b>	In JD Edwards Procurement and Subcontract Management, the process of comparing purchase order detail lines to the suppliers' invoices to create vouchers. You do not record receipt information.
<b>user identification information</b>	User ID, role, or *public.
<b>User Overrides merge</b>	Adds new user override records into a customer's user override table.
<b>value object</b>	A specific type of source file that holds input or output data, much like a data structure passes data. Value objects can be exposed (used in a published business service) or internal, and input or output. They are comprised of simple and complex elements and accessories to those elements.
<b>variance</b>	<p>In JD Edwards Capital Asset Management, the difference between revenue generated by a piece of equipment and costs incurred by the equipment.</p> <p>In JD Edwards EnterpriseOne Project Costing and JD Edwards EnterpriseOne Manufacturing, the difference between two methods of costing the same item (for example, the difference between the frozen standard cost and the current cost is an engineering variance). Frozen standard costs come from the Cost Components table, and the current costs are calculated using the current bill of material, routing, and overhead rates.</p>

<b>versioning a published business service</b>	Adding additional functionality/interfaces to the published business services without modifying the existing functionality/interfaces.
<b>Version List merge</b>	The Versions List merge preserves any non-XJDE and non-ZJDE version specifications for objects that are valid in the new release, as well as their processing options data.
<b>visual assist</b>	Forms that can be invoked from a control via a trigger to assist the user in determining what data belongs in the control.
<b>vocabulary override</b>	An alternate description for a data dictionary item that appears on a specific JD Edwards EnterpriseOne form or report.
<b>wchar_t</b>	An internal type of a wide character. It is used for writing portable programs for international markets.
<b>web application server</b>	A web server that enables web applications to exchange data with the back-end systems and databases used in eBusiness transactions.
<b>web server</b>	A server that sends information as requested by a browser, using the TCP/IP set of protocols. A web server can do more than just coordination of requests from browsers; it can do anything a normal server can do, such as house applications or data. Any computer can be turned into a web server by installing server software and connecting the machine to the internet.
<b>Web Service Description Language (WSDL)</b>	An XML format for describing network services.
<b>Web Service Inspection Language (WSIL)</b>	An XML format for assisting in the inspection of a site for available services and a set of rules for how inspection-related information should be made.
<b>web service proxy foundation</b>	Foundation classes for web service proxy that must be included in a business service server artifact for web service consumption on WAS.
<b>web service softcoding record</b>	An XML document that contains values that are used to configure a web service proxy. This document identifies the endpoint and conditionally includes security information.
<b>web service softcoding template</b>	An XML document that provides the structure for a soft coded record.
<b>Where clause</b>	The portion of a database operation that specifies which records the database operation will affect.
<b>Windows terminal server</b>	A multiuser server that enables terminals and minimally configured computers to display Windows applications even if they are not capable of running Windows software themselves. All client processing is performed centrally at the Windows terminal server and only display, keystroke, and mouse commands are transmitted over the network to the client terminal device.
<b>wizard</b>	A type of JDeveloper extension used to walk the user through a series of steps.
<b>workbench</b>	A program that enables users to access a group of related programs from a single entry point. Typically, the programs that you access from a workbench are used to complete a large business process. For example, you use the JD Edwards EnterpriseOne Payroll Cycle Workbench (P07210) to access all of the programs that the system uses to process payroll, print payments, create payroll reports, create journal entries, and update payroll history. Examples of JD Edwards EnterpriseOne workbenches include Service Management Workbench (P90CD020), Line Scheduling Workbench (P3153), Planning Workbench (P13700), Auditor's Workbench (P09E115), and Payroll Cycle Workbench.
<b>work day calendar</b>	In JD Edwards EnterpriseOne Manufacturing, a calendar that is used in planning functions that consecutively lists only working days so that component and work order scheduling can be done based on the actual number of work days available. A work

	day calendar is sometimes referred to as planning calendar, manufacturing calendar, or shop floor calendar.
<b>workflow</b>	The automation of a business process, in whole or in part, during which documents, information, or tasks are passed from one participant to another for action, according to a set of procedural rules.
<b>workgroup server</b>	A server that usually contains subsets of data replicated from a master network server. A workgroup server does not perform application or batch processing.
<b>XAPI events</b>	A service that uses system calls to capture JD Edwards EnterpriseOne transactions as they occur and then calls third-party software, end users, and other JD Edwards EnterpriseOne systems that have requested notification when the specified transactions occur to return a response.
<b>XML CallObject</b>	An interoperability capability that enables you to call business functions.
<b>XML Dispatch</b>	An interoperability capability that provides a single point of entry for all XML documents coming into JD Edwards EnterpriseOne for responses.
<b>XML List</b>	An interoperability capability that enables you to request and receive JD Edwards EnterpriseOne database information in chunks.
<b>XML Service</b>	An interoperability capability that enables you to request events from one JD Edwards EnterpriseOne system and receive a response from another JD Edwards EnterpriseOne system.
<b>XML Transaction</b>	An interoperability capability that enables you to use a predefined transaction type to send information to or request information from JD Edwards EnterpriseOne. XML transaction uses interface table functionality.
<b>XML Transaction Service (XTS)</b>	Transforms an XML document that is not in the JD Edwards EnterpriseOne format into an XML document that can be processed by JD Edwards EnterpriseOne. XTS then transforms the response back to the request originator XML format.
<b>Z event</b>	A service that uses interface table functionality to capture JD Edwards EnterpriseOne transactions and provide notification to third-party software, end users, and other JD Edwards EnterpriseOne systems that have requested to be notified when certain transactions occur.
<b>Z table</b>	A working table where non-JD Edwards EnterpriseOne information can be stored and then processed into JD Edwards EnterpriseOne. Z tables also can be used to retrieve JD Edwards EnterpriseOne data. Z tables are also known as interface tables.
<b>Z transaction</b>	Third-party data that is properly formatted in interface tables for updating to the JD Edwards EnterpriseOne database.





# Index

## A

- adapter service creation 6
- adapter service information 7
- adapter services defined 4
- adapter services overview 5
- additional documentation viii
- application fundamentals vii

## C

- comments, submitting xii
- common fields xii
- components of interface documents 4
- contact information xii
- cross-references xi
- Customer Connection website viii

## D

- Developer tool overview 3
- documentation
  - downloading viii
  - related viii
  - updates viii
- downloading documentation viii

## E

- error message review 13

## F

- flow services defined 4
- folders defined 4

## G

- guidelines for creating integrations 5

## I

- implementation guides
  - ordering viii
- integration development methodology
  - overview 3
- interface document components 4

## L

- listener warning message 14
- log message review 13

## M

- multiple notifications for a Listener 14

## N

- no templates message 15
- notes xi
- notification events not delivered message 14
- notification service enable 11
- notification service information 10
- notification service response creation 10
- notification services defined 4
- notification services overview 9

## O

- overview 3

## P

- packages defined 3
- PeopleCode, typographical conventions x
- prerequisites vii

## R

- related documentation viii
- request messages, reviewing 7

## S

- server log on console 13
- server log page 13
- statistics page 13
- suggestions, submitting xii

## T

- test adapter services 5
- triggers defined 4
- typographical conventions x

## V

- visual cues x

## W

- warnings xi

