



Agile Product Lifecycle Management

Agile PLM Data Mart - Data Reference Manual

v3.0.0.0.1

Part No. E12750-01

September 2008

Copyright and Trademarks

Copyright © 1995, 2008, Oracle and/or its affiliates. All rights reserved.

This software and related documentation are provided under a license agreement containing restrictions on use and disclosure and are protected by intellectual property laws. Except as expressly permitted in your license agreement or allowed by law, you may not use, copy, reproduce, translate, broadcast, modify, license, transmit, distribute, exhibit, perform, publish or display any part, in any form, or by any means. Reverse engineering, disassembly, or decompilation of this software, unless required by law for interoperability, is prohibited.

The information contained herein is subject to change without notice and is not warranted to be error-free. If you find any errors, please report them to us in writing.

If this software or related documentation is delivered to the U.S. Government or anyone licensing it on behalf of the U.S. Government, the following notice is applicable:

U.S. GOVERNMENT RIGHTS

Programs, software, databases, and related documentation and technical data delivered to U.S. Government customers are "commercial computer software" or "commercial technical data" pursuant to the applicable Federal Acquisition Regulation and agency-specific supplemental regulations. As such, the use, duplication, disclosure, modification, and adaptation shall be subject to the restrictions and license terms set forth in the applicable Government contract, and, to the extent applicable by the terms of the Government contract, the additional rights set forth in FAR 52.227-19, Commercial Computer Software License (December 2007). Oracle USA, Inc., 500 Oracle Parkway, Redwood City, CA 94065.

This software is developed for general use in a variety of information management applications. It is not developed or intended for use in any inherently dangerous applications, including applications which may create a risk of personal injury. If you use this software in dangerous applications, then you shall be responsible to take all appropriate fail-safe, backup, redundancy and other measures to ensure the safe use of this software. Oracle Corporation and its affiliates disclaim any liability for any damages caused by use of this software in dangerous applications.

Oracle is a registered trademark of Oracle Corporation and/or its affiliates. Other names may be trademarks of their respective owners.

This software and documentation may provide access to or information on content, products and services from third parties. Oracle Corporation and its affiliates are not responsible for and expressly disclaim all warranties of any kind with respect to third party content, products and services. Oracle Corporation and its affiliates will not be responsible for any loss, costs, or damages incurred due to your access to or use of third party content, products or services.

CONTENTS

Copyright and Trademarks	ii
Introduction.....	1
Naming Conventions	1
Schema	1
Index	2
Columns	2
Published Data Model	5
Entity-Relations	6
Control Entities	7
Metadata & Translation Entities	7
Data Entities - Common	8
Data Entities - PPM	10
Data Entities - PC	10
Data Entities - PQM	11
Dimension Entities	12
Table Columns	17

Normal Dimension Entities	17
Cascade List Dimension Entities	17
AGILE_FLEX	18
DM_LOAD_CTL	18
ODM_ACTION_ITEM	18
ODM_ACTIVITY_BASELINE	19
ODM_ACTIVITY_DEPENDENCY	20
ODM_AGILEUSER	20
ODM_APPROVAL_ITEMS	24
ODM_ASL_MAP	24
ODM_ATT_FILE_FLDR	25
ODM_ATT_HIST_RPT_FF	26
ODM_ATTACHMENT_MAP	27
ODM_ATTR_METADATA	27
ODM_BASELINE_REV	28
ODM_BOM	28
ODM_CHANGE_HISTORY	29
ODM_CHNG_CHG_ORDERS	30
ODM_CHNG_CHG_REQS	31
ODM_CHNG_DEVIATION	32
ODM_CHNG_MFR_ORDERS	34
ODM_CHNG_PRICE_CHGORDERS	35
ODM_CHNG_SITE_CHGORDERS	36
ODM_CHNG_STOP_SHIPS	38
ODM_CLASS_METADATA	40
ODM_CONVERSION	40
ODM_CUSTOMER	40
ODM_DATA_DICTIONARY	42
ODM_DISCUSSION	42
ODM_ESCALATIONS	43
ODM_FILE_INFO	44
ODM_FILES	44
ODM_FLEXCOLS_METADATA	44
ODM_FOLDER	45
ODM_FOLDER_STRUCTURE	45
ODM_INDEX_COLUMN_CTL	46
ODM_ITEM_DOCS	46
ODM_ITEM_HISTORY	47
ODM_ITEM_PARTS	48
ODM_ITEM_SITES	49
ODM_LANGTABLE	51
ODM_LISTDIM_CTL	51
ODM_LISTDIM_CTL_BKP	51
ODM_MANU_BY	51
ODM_MANU_PARTS	52
ODM_MANUFACTURERS	53
ODM_MASTER_INDEX_CTL	54
ODM_NEWS	55
ODM_NOTIFICATION	55
ODM_ORGANIZATION	55
ODM_PAGE_THREE	57

ODM_PART_FAMILY	58
ODM_PART_FAMILY_MAP	59
ODM_PRG_ACTIVITY	59
ODM_PRG_GATES	63
ODM_PRICE_PUB_PRICE	67
ODM_PRICE_QUOTE_HIST	69
ODM_PRODUCT_LINE	70
ODM_PRODUCT_LINE_MAP	70
ODM_PROGRAM_HISTORY	70
ODM_PSR_NCR	71
ODM_PSR_NCR_ITEM	72
ODM_PSR_PR	73
ODM_PSR_PR_ITEM	74
ODM_QCR_AUDIT	75
ODM_QCR_AUDIT_ITEM	77
ODM_QCR_CAPA	77
ODM_QCR_CAPA_ITEM	79
ODM_REFDESIG	79
ODM_RELATIONSHIP	79
ODM_REV	81
ODM_SIGNOFF	82
ODM_SIMPLE_RELATION	82
ODM_SITE	83
ODM_SITES	83
ODM_SUBSCRIPTIONS	85
ODM_TEAM	85
ODM_TEAM_BASELINE	86
ODM_USER_ASSIGNMENT	86
ODM_USER_GROUP	86
ODM_USER_ROLE	88
ODM_USER_SITE	88
ODM_USER_USAGE_HISTORY	89
ODM_VERSION	89
ODM_VERSION_FILE_MAP	89
ODM_WORKFLOW_METADATA	90
ODM_WORKFLOW_PROCESS	90
PARAMETER	91
VERSION	92

Preface

The Oracle|Agile documentation set includes Adobe® Acrobat® PDF files. The [Oracle Technology Network \(OTN\) Web site](http://www.oracle.com/technology/documentation/agile.html) <http://www.oracle.com/technology/documentation/agile.html> contains the latest versions of the Oracle|Agile PLM PDF files. You can view or download these manuals from the Web site, or you can ask your Agile administrator if there is an Oracle|Agile Documentation folder available on your network from which you can access the Oracle|Agile documentation (PDF) files.

Note To read the PDF files, you must use the free Adobe Acrobat Reader®, version 7.0 or later. This program can be downloaded from the [Adobe Web site](http://www.adobe.com) <http://www.adobe.com>.

The [Oracle Technology Network \(OTN\) Web site](http://www.oracle.com/technology/documentation/agile.html) <http://www.oracle.com/technology/documentation/agile.html> can be accessed through Help > Manuals in both the Agile Web Client and the Agile Java Client. If you need additional assistance or information, please contact [support](http://www.oracle.com/agile/support.html) <http://www.oracle.com/agile/support.html> (<http://www.oracle.com/agile/support.html>) for assistance.

Note Before calling Agile Support about a problem with an Oracle|Agile PLM manual, please have the full part number, which is located on the title page.

TTY Access to Oracle Support Services

Oracle provides dedicated Text Telephone (TTY) access to Oracle Support Services within the United States of America 24 hours a day, 7 days a week. For TTY support, call 800.446.2398. Outside the United States, call +1.407.458.2479.

Readme

Any last-minute information about Oracle|Agile PLM can be found in the Readme file on the [Oracle Technology Network \(OTN\) Web site](http://www.oracle.com/technology/documentation/agile.html) <http://www.oracle.com/technology/documentation/agile.html>

Agile Training Aids

Go to the [Oracle University Web page](http://www.oracle.com/education/chooser/selectcountry_new.html) http://www.oracle.com/education/chooser/selectcountry_new.html for more information on Agile Training offerings.

Accessibility of Code Examples in Documentation

Screen readers may not always correctly read the code examples in this document. The conventions for writing code require that closing braces should appear on an otherwise empty line; however, some screen readers may not always read a line of text that consists solely of a bracket or brace.

Accessibility of Links to External Web Sites in Documentation

This documentation may contain links to Web sites of other companies or organizations that Oracle does not own or control. Oracle neither evaluates nor makes any representations regarding the accessibility of these Web sites.

Introduction

This chapter includes the following:

- Naming Conventions 1

This manual describes the entities of the Published Model of Agile PLM Data Mart Schema. It is intended for advanced developers and DB administrators who want to make use of it for their Enterprise Data Warehousing and BI/Reporting Solutions.

Naming Conventions

Schema

Agile PLM Data Mart Database table names follow a three-part naming convention -
PREFIX_NAME_SUFFIX

PREFIX	The prefix indicates the part of the Agile PLM Data Mart Database schema to which a table belongs. It distinguishes the tables from one another.	
	ODM_	Published schema tables
	TEMP_	Tables used by a script/fix that can be dropped without affecting the system
	CX_	Customer extension tables
NAME	A unique table name with singular noun. Is generally an abbreviation of the entity super-type name.	
SUFFIX	A super-type name may be followed by the entity subtype. For example, the super-type PSR (Problem Service Request) has PR (Problem Report) as one of its subtypes.	
	_NCR	Class name
	_REL	Supports many-to-many relationship from an entity back to itself
	_D	Dimension table derived out of Agile configured Lists
	_MAP	Map table that resolved many-to-many relationships w/ multi-select list attributes

Index

Indexes table names are the same as that of corresponding table on which they are created, alongwith a suffix. The suffixes are 1 to 4 characters.

Suffix	Value	Unique?
_F#	Foreign key index	No
_P#	Primary key index	Yes
_U#	User's primary key index	Yes
_M#	Miscellaneous index. Any index that does not fit into one of the above categories	No
_CX#	Customer index	No

Columns

Suffixes have been used to indicate columns that must contain specific values.

Suffix	Value
_CD	This column value is based on the contents of A_LIST_ENTRY.ENTRY_CD (originally LISTENTRY.ENTRYID) (this is not a FK). For a column with a Dynamic List whose values are not stored in List Entry table, we can treat it as a normal FK to an Agile table.
_DATE	This column contains a date or datetime value
_FLAG	This column contains a numeric value for Boolean value; 1 indicates True or Yes 0 indicates False or No
_ID	This column contains ID values.

Published Data Model

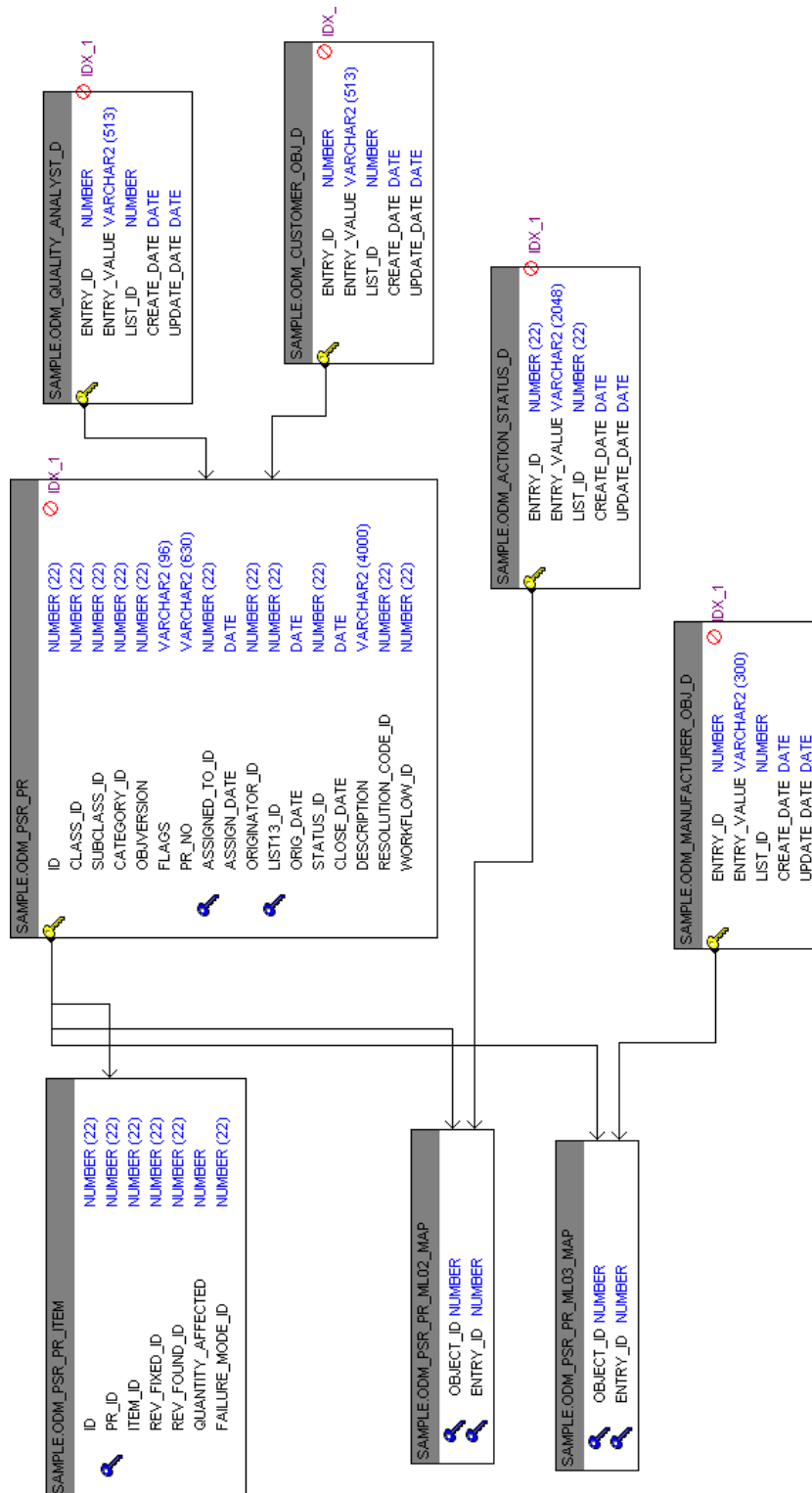
This chapter includes the following:

▪ Control Entities	7
▪ Staging Entities	7
▪ Metadata & Translation Entities	7
▪ Data Entities - Common	8
▪ Data Entities - PPM	10
▪ Data Entities - PC	10
▪ Data Entities - PQM	11
▪ Table Columns	17

The Published Data Model comprises the following:-

1. Control Entities
2. Stage Entities
3. Metadata and Translation Entities
4. Data Entities
 1. Common
 2. PPM
 3. PC
 4. PQM
5. Dimension Entities

Entity-Relations



Control Entities

Entity Name	Primary Keys	Description
<u>DM_LOAD_CTL</u>	ID	
<u>ODM_DATA_DICTIONARY</u>	ID	Stores data dictionary for Data Mart table including source and target mapping details.
<u>ODM_INDEX_COLUMN_CTL</u>	ID	Not in use for 3.0
<u>ODM_LISTDIM_CTL</u>	ID	Stores List dimension table information for lists.
<u>ODM_LISTDIM_CTL_BKP</u>	ID	Used by configuration tool
<u>ODM_MASTER_INDEX_CTL</u>	ID	Not in use for 3.0
<u>PARAMETER</u>	ID	Table to store variables that control ETL process
<u>VERSION</u>	ID	Stores Version information about PLM, OS, DB server, Datamart

Metadata & Translation Entities

Entity Name	Primary Keys	Description
<u>ODM_ATTR_METADATA</u>	ID	Describes attribute metadata Agile PLM objects.
<u>ODM_CLASS_METADATA</u>	ID	Describes class metadata Agile PLM objects.
<u>ODM_FLEXCOLS_METADATA</u>	ID	Describes flex attribute metadata for Agile PLM objects.
<u>ODM_WORKFLOW_METADATA</u>	ID	Describes metadata for all configured workflows and their process steps within Agile PLM.

Data Entities - Common

Entity Name	Primary Keys	Description
ODM_ACTION_ITEM	ID	Stores the Action item related information used in Discussion and Activity objects
ODM_AGILEUSER	ID	Stores information about Users
ODM_AS_L_MAP	ID	This table maps Suppliers (in the ORGANIZATION table) to Items and Manufacturer Parts.
ODM_ATT_FILE_FLDR	ID	This table support attachment being the file folder class object
ODM_ATT_HIST_RPT_FF	ID	This table support attachment being the History Report File Folder class object
ODM_ATTACHMENT_MAP	ID	Relationship mapping between Attachment, Version and Files tables. This table implements the many-to-many relationship between business objects and attachments. The table contains three foreign keys, attach_id, parent_id, parent_class and parent_id2 that will represent the relationship between an attachment and a business object. In addition, the table will also include a set of flex fields.
ODM_CHANGE_HISTORY	ID	Stores user actions on routable objects
ODM_CONVERSION	CONV_ID	Currency conversion rates stored in this table are used to convert currency values to the selected corporate currency.
ODM_CUSTOMER	ID	This is the main customer record.
ODM_DISCUSSION	ID	Stores discussion objects and its replies
ODM_ESCALATIONS	ID	Stores workflow escalations for users.
ODM_FILE_INFO	FILE_ID	Stores the information of the File.
ODM_FILES	ID	Each row in the table represents a single file of a version of an attachment object.
ODM_FOLDER_STRUCTURE	ID	Stores the Structure of the Folder which will hold all the Objects.
ODM_ITEM_DOCS	ID	This is the main item table for Documents.
ODM_ITEM_HISTORY	ID	Stores all user actions that have acted upon all non-routable objects
ODM_ITEM_PARTS	ID	This is the main item table for Parts.
ODM_LANGTABLE	LANG_ID,TYPE_ID,ID	Stores the attribute contents or values with the Language ID.
ODM_MANU_BY	ID	Stores relationship instances between agile parts and manufacturer parts.
ODM_MANU_PARTS	ID	Stores relationship instances between agile parts and manufacturer parts.
ODM_MANUFACTURERS	ID	Stores Information about Manufacturers
ODM_NOTIFICATION	NOTI_ID	Stores information about notifications
ODM_ORGANIZATION	ORG_ID	Store information about organization
ODM_PAGE_THREE	ID,CLASS_ID	Stores the Page Three information of all the objects
ODM_PART_FAMILY	ID	Stores Part Group details
ODM_PART_FAMILY_MAP	ID	Stores the details of the mapping of Part Family.
ODM_PRICE_PUB_PRICE	ID	Stores the published price information

Entity Name	Primary Keys	Description
ODM_PRICE_QUOTE_HIST	ID	Stores the Historical Price Information.
ODM_PRODUCT_LINE	PL_ID	Stores the information of product line
ODM_PRODUCT_LINE_MAP	PLM_OBJECT_ID PLM_PRODUCT_LINE_ID	Stores the Product Line mapping Information.
ODM_RELATIONSHIP	ID	You can specify ad hoc relationships between Agile objects by setting up relationships between them. Such arelationship is created when you add an object to a table in the Relationships tab of another object. Classes of objectsthat can be referenced on a Relationship tab include routable objects (which always have a Relationships tab), items,manufacturers, manufacturer parts, suppliers, customers, projects, RFQs, and supplier responses.
ODM_SIGNOFF	ID	Stores user signoff status details.
ODM_SITE	SITE_ID	Stores PCM Ship to Locations
ODM_SITES	ID	Sites represent manufacturing locations.
ODM_USER_ASSIGNMENT	ID	Stores relationship between user and roles - Appears to be an associative entity.
ODM_USER_GROUP	ID	Stores User Groups as defined in the admin interface.
ODM_USER_ROLE	ID	Stores the user roles.
ODM_USER_SITE	USITE_ID	Associative entity between AGILEUSER and SITES
ODM_USER_USAGE_HISTORY	ID	History of when users log in and out of system ID Primary key.
ODM_VERSION	ID	Each row in the table represents a single version of an attachment object.
ODM_VERSION_FILE_MAP	ID	This table will store the info of each row in Files Tab for different versions. This table will also implement the many-to-many relationship between files and versions. Different row in different version in the files tab may point to the same physical files. This is to avoid duplicating the physical file content when the file is unchanged when we create a new version.
ODM_WORKFLOW_PROCESS	ID	Stores workflow status occurring sequence for all the workflow routable objects.

Data Entities - PPM

Entity Name	Primary Keys	Description
ODM_ACTIVITY_BASELINE	ID	Stores baselines for activity objects
ODM_ACTIVITY_DEPENDENCY	ID	Stores Activity dependency relationship between Activity records. TO_ID is dependant on the FROM_ID with both ID's being ACTIVITY records.
ODM_APPROVAL_ITEMS	ID	Stores Gates object's approval items
ODM_FLEX_FIELD	ID	Stores flex fields of action item This is used to extend ACTION_ITEM and NEWS
ODM_NEWS	ID	Stores news objects for Activity and Gates object. This is used in PE product
ODM_PRG_ACTIVITY	ID	Stores the Program Activities Information
ODM_PRG_GATES	ID	Stores information about Gates Object
ODM_PROGRAM_HISTORY	ID	Stores history logs for Activity, Gates and Discussion objects
ODM_TEAM	ID	Stores the Resources information associated with Programs
ODM_TEAM_BASELINE	ID	Stores the Resources information of every baselined activity for all versions.

Data Entities - PC

Entity Name	Primary Keys	Description
ODM_BASELINE_REV		Stores item revision information. This is the instance of the revision of the object
ODM_BOM	ID	Stores Bill of material related information
ODM_CHNG_CHG_ORDERS	ID	Stores information about change order objects
ODM_CHNG_CHG_REQS	ID	Stores information about change request objects
ODM_CHNG_DEVIATION	ID	Stores information about deviation objects
ODM_CHNG_MFR_ORDERS	ID	Stores the changes regarding the manufactur orders.
ODM_CHNG_PRICE_CHGORDERS	ID	Stores information about price change order objects
ODM_CHNG_SITE_CHGORDERS	ID	Stores information about site change order objects
ODM_CHNG_STOP_SHIPS	ID	Stores information about stop ships objects
ODM_ITEM_SITES	ID	Store relationship between item and sites - Not a pure associative entity
ODM_REFDESIG	ID	Stores reference designator labels.
ODM_REV	ID	Stores item revision information. This is the instance of the revision of the object

Data Entities - PQM

Entity Name	Primary Keys	Description
ODM_PSR_NCR	ID	Stores the Non Conformance Reports
ODM_PSR_NCR_ITEM	ID	Mapping between NCR object and its Affected Items
ODM_PSR_PR	ID	Stores the Problem Reports
ODM_PSR_PR_ITEM	ID	Mapping between PR object and its Affected Items
ODM_QCR_AUDIT	ID	Stores the Audits
ODM_QCR_AUDIT_ITEM	ID	Mapping between an Audit object and its Affected Items
ODM_QCR_CAPA	ID	Stores the Corrective and Preventive Actions
ODM_QCR_CAPA_ITEM	ID	Mapping between a CAPA object and its Affected Items

Dimension Entities

Entity Name	PLM List ID	Description
ODM_ACTION_D	3876	Action List
ODM_ACTION_STATUS_D	18414	Action Status
ODM_ACTION_TYPE_D	201	Action Type List
ODM_ACTIVITY_STATE_D	19983	Activity State List
ODM_AML_D	11936	Site AML List
ODM_AML_LIST_D	12068	Site Specific Bom/AML List
ODM_AML_ON_BUY_D	11935	AML on Buy List
ODM_AML_PREF_STATUS_D	2249	AML Preferred Status
ODM_AML_STATUS_D	4559	AML STATUS
ODM_ATTACH_TYPE_D	4682	AttachType List
ODM_ATTACHMENT_STATUS_D	6391	Attachment Status List
ODM_AUDIT_RESULT_D	6820	Audit Result
ODM_BUYER_D	8934	Buyer
ODM_CALC_COMPLIANCE_D	2000001019	Calculated Compliance
ODM_CATEGORY10_LIST_D	2000000192	Category 10 List
ODM_CATEGORY7_LIST_D	2000000189	Category 7 List
ODM_CATEGORY8_LIST_D	2000000190	Category 8 List
ODM_CATEGORY9_LIST_D	2000000191	Category 9 List
ODM_CHANGE_ANALYST_D	730	Change Analysts
ODM_CHANGE_CATEGORY_D	411	Change Category
ODM_CHANGE_OBJ_D	8223	All Change Objects
ODM_CHNG_FUNCTION_D	331	Change Function
ODM_COMMODITIES_ITEMS_D	12941	Commodities for Items
ODM_COMMODITY_TYPE_D	2000004868	Commodity Type
ODM_COMPLIANCE_MGR_D	2000004949	Compliance Manager
ODM_COMPONENT_ENGRS_D	750	Component Engineers
ODM_COMPOSITION_TYPE_D	2000007577	Composition Type
ODM_CONTINENT_D	4598	Continent
ODM_COUNTRY_D	365	Country
ODM_CURRECNY_D	8704	Currencies
ODM_CUSTOMER_D	2000000107	Customer List
ODM_CUSTOMER_OBJ_D	6505	All Customer Objects
ODM_CUSTOMER_STATUS_D	5134	Customer Status List
ODM_CUSTOMER_TYPE_D	5133	Customer Type List
ODM_DECLARATIONS_OBJ_D	2000002155	All Declaration Objects
ODM_DECLARE_COMPLIANCE_D	2000001394	Declared Compliance
ODM_DEVIATION_TYPE_D	737	DEV Type List

Entity Name	PLM List ID	Description
ODM_DISC_PRIORITY_LIST_D	18412	Discussion Priority List
ODM_DISCUSSION_OBJ_D	8229	All Discussion Objects
ODM_DISPOSITION_D	431	Disposition
ODM_DIVISION_D	2000000105	Division List
ODM_DOC_CATEGORY_D	321	Document Category
ODM_DOCUMENT_TYPE_D	739	Doc Type List
ODM_ECO_TYPE_D	734	ECO Type List
ODM_ECR_TYPE_D	736	ECR Type List
ODM_EXEMPTIONS_D	2000001449	Exemptions
ODM_FAILURE_MODE_D	5132	Failure Mode
ODM_FILE_FOLDERS_OBJ_D	8220	All File Folder Objects
ODM_GERMAN_D	31123	GermanList
ODM_HISTORY_ACTION_D	4506	HistoryActionList
ODM_IPC_FILE_D	2000005842	IPC File Type
ODM_IPC_FORM_D	2000005839	IPC Form Type
ODM_IPC_LEGAL_D	2000007596	IPC Legal Definition Type
ODM_IPC_MSL_D	2000005847	IPC J-STD-020 MSL Rating
ODM_IPC_NUMBER_PROCESS_D	2000005846	IPC Number of Processing Cycles
ODM_IPC_SUPPLIER_D	2000007595	IPC Supplier Acceptance
ODM_IPC_TERMINAL_BASE_D	2000005845	IPC Terminal Base Alloy
ODM_IPC_TERMINAL_PLATING_D	2000005844	IPC Terminal Plating / Grid Array Material
ODM_IPC_UNIT_D	2000005843	IPC Unit Type
ODM_IPC1752_1_DECL_D	2000005841	IPC 1752-1 Declaration Type
ODM_IPC1752_2_DECL_D	2000005840	IPC 1752-2 Declaration Type
ODM_ISSUE_TYPE_D	4961	Issue Type List
ODM_ITEM_CHANGE_FILTER_D	16914	Item Change Filter List
ODM_ITEM_FAILUREMODE_D	21620	Failure Mode List - [Part]
ODM_ITEM_OBJ_D	8222	All Item Objects
ODM_ITEM_SITES_QUOTE_D	6043	Item_Sites Quote_As List
ODM_ITEM_STATE_D	4566	ITEM_STATE
ODM_ITMMREV_STATE_D	4558	ITEMREV_STATE
ODM_JGPSSI_UNIT_D	2000007462	JGPSSI Units
ODM_JGPSSI_Y_N_D	2000007463	JGPSSI Yes/No
ODM_JIG_LEVEL_D	2000011094	JIG Level
ODM_LAUNCH_YEAR_LIST_D	2000000108	Launch Year List
ODM_LOCATION_D	4542	Location
ODM_MAKE_BUY_D	12065	Make/Buy
ODM_MANUFACTURER_OBJ_D	8224	All Manufacturer Objects
ODM_MANUFACTURER_PART_OBJ_D	8225	All Manufacturer Part Objects
ODM_MCO_TYPE_D	742	MCO Type List
ODM_MFR_TYPE_D	740	Mfr Type List

Entity Name	PLM List ID	Description
ODM_MFRPART_TYPE_D	741	Mfr Part Type List
ODM_NEWS_TYPE_D	18406	News Type List
ODM_ORG_STATUS_D	4516	ORG_STATUS
ODM_ORG_SUPPLIER_D	4545	ORG_SUPPLIER_TYPE
ODM_ORG_TYPE_D	4515	ORG_TYPE
ODM_ORGANIZATION_OBJ_D	13555	All Organization Objects
ODM_OVERLAY_ICON_D	8974	Overlay Icon List
ODM_PACK_CATEGORY_D	412	Package Category
ODM_PACK_CUTOMER_D	3253	Package Customer list
ODM_PART_CATEGORY_D	311	Part Category
ODM_PART_COMPLIANCE_D	2000002025	Part Compliance List
ODM_PART_FAMILY_COMM_OBJ_D	2000007001	All Part Family Commodity Objects
ODM_PART_FAMILY_OBJ_D	2000004418	All Part Family Objects
ODM_PART_TYPE_D	735	Part Type List
ODM_PKG_OBJ_D	8881	All Package Objects
ODM_PKG_TYPE_D	3254	Package Type list
ODM_PLANNER_D	8933	Planner
ODM_PR_DISPOSITION_D	5131	PR Disposition List
ODM_PR_STATUS_LIST	5128	PR Status List
ODM_PRICE_ADMIN_D	8524	Price Administrators
ODM_PRICE_OBJ_D	8523	All Price Objects
ODM_PRIORITY_D	12868	Priority
ODM_PROD_LINE_D	2000000106	Product Line List
ODM_PRODUCT_LINES_D	291	Product Lines
ODM_PROGRAM_TYPE_D	2000000103	Program Type List
ODM_PROGRAMS_OBJ_D	8228	All Program Objects
ODM_PSR_CATEGORY_D	5129	Problem Report Category
ODM_PSR_OBJ_D	8227	All PSR Objects
ODM_PSR_PR_PRODUCTLINE_D	5948	Product Lines(PSR)
ODM_PSR_SEVERITY_D	6629	PSR Severity List
ODM_PUB_ACTION_D	203	Publisher Actions List
ODM_QCR_CATEGORY_D	6819	QCR Category
ODM_QCR_OBJ_D	8226	All QCR Objects
ODM_QCR_TYPE_D	4918	QCR Type List
ODM_QUALITY_ADMIN_D	5198	Quality Administrators
ODM_QUALITY_ANALYST_D	5199	Quality Analysts
ODM_REASONCODE_D	351	Reason Code
ODM_REF_DESIGN_IND_D	2000007046	Reference Designator Range Indicator List
ODM_REGION_D	4599	Region/Province/State
ODM_REGION_LIST_D	2000000104	Region List
ODM_REGIONS_D	4518	Time zones of the Region

Entity Name	PLM List ID	Description
ODM_RELEASE_TYPE_D	4539	RELEASE_TYPE
ODM_REPONSE_D	4537	RESPONSE
ODM_RESOURCE_TYPE_D	200000748	Resource Type List
ODM_RESPONSE_LINE_STATUS_D	4564	RESPONSE_LINE_STATUS
ODM_RESPONSE_STATE_D	4536	RESPONSE_STATE
ODM_RESPONSE_TYPE_D	4552	RESPONSE_TYPE
ODM_RFQ_LINE_STATUS_D	4550	RFQ_LINE_STATUS
ODM_RFQ_OBJ_D	8521	All RFQ Objects
ODM_RFQ_RESPONSE_D	8522	All RFQ Response Objects
ODM_RFQ_STATE_D	4533	RFQ_STATE
ODM_RFQ_TYPE_D	4534	RFQ_TYPE
ODM_ROHS_DEC_D	2000005848	RoHS Declaration
ODM_ROHS_EXEMPTION_D	2000007599	RoHS Exemption
ODM_ROLES_D	4523	ROLES
ODM_ROLL_UP_D	2000004142	Rollup Selection
ODM_SEVERITY_D	6504	Severity
ODM_SHIP_FROM_D	10311	Ship From
ODM_SHIP_LOCATION_D	17501	Ship To Location List
ODM_SITE_ERP_D	11934	Site ERP List
ODM_SITES_OBJ_D	13166	All Sites Objects
ODM_SIZE_D	421	Size
ODM_SOURCING_OBJ_D	8520	All Sourcing Project Objects
ODM_SOURCING_PROG_D	10381	Sourcing Programs
ODM_SPEC_VALIDATION_D	2000001531	Spec Validation
ODM_SPECIFICATION_OBJ_D	2000001991	All Specification Objects
ODM_STATE_D	353	State List
ODM_STATE_PROV_REGION_D	12645	State/Province/Region List
ODM_STATUS_D	733	Status List
ODM_STATUS_TYPE_D	3644	Status Type Selection
ODM_STOPSHIPS_TYPE_D	738	SS Type List
ODM_SUBSTANCE_OBJ_D	2000002154	All Substance Objects
ODM_SUBSTANCE_REPORT_D	2000002499	Substance Reporting
ODM_SUPP_OFFER_RAT_D	4522	Supplier Offering Rating
ODM_SUPPLIER_AML_STATUS_D	4560	SUPPLIER_AML_STATUS
ODM_SUPPLIER_GROUP_D	17669	Supplier Group Type
ODM_SUPPLIER_RESP_STATUS_D	4562	Supplier Response Status
ODM_SUPPLIER_TYPE_D	4554	SUPPLIER_TYPE
ODM_SUPPLIERS_OBJ_D	17667	All Supplier Objects
ODM_SUPPLIER_OFFER_TYPE_D	17504	List of Supplier Offering Types
ODM_TIMEZONE_D	4474	List of TimeZone display strings
ODM_TRANSFER_ORDER_OBJ_D	8882	All Transfer Order Objects

Entity Name	PLM List ID	Description
ODM_TRANSMISSION_STATUS_D	12823	Transmission Status List
ODM_TRANSPORT_TERMS_D	4587	Transportation Terms
ODM_USER_CATEGORY_D	9279	User Category
ODM_USER_GROUP_OBJ_D	13048	All User Group Objects
ODM_USER_GROUP_TYPE_D	12082	User Group Type List
ODM_USERS_OBJ_D	361	All User Objects
ODM_YES_NO_D	2000003226	Yes/No Cost List

Table Columns

Normal Dimension Entities

Column	Type	Size	Precision	Comments
CREATE_DATE	DATE	7		Created Date
ENTRY_ID	NUMBER	22	22	Unique Identifier for dimension member
ENTRYVALUE	VARCHAR2	2000		Member Name
LIST_ID	NUMBER	22	22	Agile PLM List ID
UPDATE_DATE	DATE	7		Updated Date
				Identify if this is a deleted object. 1-Deleted; 0-Not Deleted
DELETE_FLAG	NUMBER	22	22	

Cascade List Dimension Entities

Column	Data Type	Size	ID	Comments
ENTRY_ID	NUMBER	22	1	Unique Identifier for dimension member
ENTRY_VALUE	VARCHAR2	2000	2	Member Name
CASCADE_VALUE	VARCHAR2	2000	3	Cascaded Path of the List Entries with Hierarchy
CASCADE_PATH	VARCHAR2	2000	4	Cascaded Path of the Lists with Hierarchy
PARENT_ENTRY	NUMBER	22	5	Parent Entry of the Entry_ID
LEVEL0	NUMBER	22	6	Hierarchy of Entry_ID (Parent Entry ID)
LEVEL1	NUMBER	22	7	Hierarchy of Entry_ID (Child of LEVEL0 Entry_ID)
LEVEL2	NUMBER	22	8	Hierarchy of Entry_ID (Child of LEVEL1 Entry_ID)
LEVEL3	NUMBER	22	9	Hierarchy of Entry_ID (Child of LEVEL2 Entry_ID)
LEVEL4	NUMBER	22	10	Hierarchy of Entry_ID (Child of LEVEL3 Entry_ID)
LIST_ID	NUMBER	22	20	Agile PLM List ID
IS_LEAF	NUMBER	22	21	Identifier of the leaf node: 1-Yes 0-No
				Identify if this is a deleted object: 1-Deleted 0-Not Deleted
DELETE_FLAG	NUMBER	22	22	

Note The Column characteristics depicted in light gray fill are **Not Null**.

AGILE_FLEX

Column	Type	Size	Precision	Comments
ID	NUMBER	22	22	Object ID - Not Unique
CLASS	NUMBER	22		Object's Class ID. Not unique.
ATTID	NUMBER	22		Attribute ID for all Flex attributes added in PLM
OBJ_ID	NUMBER	22	22	Row ID in the object table
NUMBER1	NUMBER	22		Stores value for field field of NUMERIC attribute type or currency value for MONEY attribute type.
NUMBER2	NUMBER	22		Stores currency code for field field of MONEY attribute type.
TEXT	VARCHAR2	4000		Stores value for field field of TEXT and MULTI-TEXT attribute type.
FLEXDATE	DATE	7		Stores value for field field of DATE attribute type.
CREATED	DATE	7		Created On
LAST_UPD	DATE	7		Last Updated On

DM_LOAD_CTL

Column	Type	Size	Precision	Comments
BATCH_NO	NUMBER	22		ETL run number
START_DATE	DATE	7		ETL run start Date
END_DATE	DATE	7		ETL run end Date
LOAD_TYPE	VARCHAR2	5		ETL run type and values are: "FULL" for Full load; "CDC" for incremental load
STATUS	VARCHAR2	10		Status of ETL run and values: "FAILED" if ETL run failed or "SUCCESS" if ETL run is successful.

ODM_ACTION_ITEM

Column	Type	Size	Precision	Comments
ID	NUMBER	22	22	Unique ID
OBJ_ID	NUMBER	22	22	Object ID of an Activity, Discussion or any object that uses Discussions.
CLASS_ID	NUMBER	22	22	Class ID of the object that this Action Item is associated with (18022, 18387 or 18451)
SUBJECT	VARCHAR2	200		Subject of the Action Item
DESCRIPTION	VARCHAR2	4000		Description of the Action Item
DUE_DATE	DATE	7		Due Date of the Action Item
STATUS_ID	NUMBER	22	22	Current Status of the Action Item.FK to ODM_ACTION_STATUS_D
ASSIGNED_TO_ID	NUMBER	22	22	ID of the User whom the Action Item is assigned to
CREATOR_ID	NUMBER	22	22	ID of the User that created this Action Item

Column	Type	Size	Precision	Comments
DELETE_FLAG	NUMBER	22	1	Identify if this is a deleted object. 1-Deleted; 0-Not Deleted
CREATE_DATE	DATE	7		Created On
UPDATE_DATE	DATE	7		Last updated on

ODM_ACTIVITY_BASELINE

Column	Type	Size	Precision	Comments
ACT_ID	NUMBER	22	22	ID of baselined Activity
CLASS_ID	NUMBER	22	22	Class ID of baselined Activity
SUBCLASS_ID	NUMBER	22	22	Subclass ID of baselined Activity
NAME	VARCHAR2	800		Name of baselined Activity
AUTO_NUMBER	VARCHAR2	150		Auto number of baselined Activity
ACTIVITY_DESC	VARCHAR2	4000		Description of baselined Activity
REV_ID	NUMBER	22	22	Baseline Revision
REV_DESC	VARCHAR2	1350		Baseline Revision Description
REV_DATE	DATE	7		Baseline Revision Date
PARENT_ID	NUMBER	22	22	Parent ID of Baseline Activity
ROOT_ID	NUMBER	22	22	Root ID of Baseline Activity
SCH_START_DATE	DATE	7		Schedule Start Date of baselined Activity
SCH_DURATION	NUMBER	22		Scheduled Duration
SCH_END_DATE	DATE	7		Schedule End Date of baselined Activity
ACT_START_DATE	DATE	7		Actual Start Date of baselined Activity
ACT_DURATION	NUMBER	22		Activity Duration
ACT_END_DATE	DATE	7		Actual End Date of baselined activity
SCH_VARIANCE	NUMBER	22		Schedule Variance
FLAGS	VARCHAR2	32		0 (FALSE) / 1 (TRUE) for each position in the flag.
BGT_LABOR_COST_VALUE	NUMBER	22	18	Budgeted labor cost value
BGT_LABOR_COST_CURRENCY	NUMBER	22	4	Budgeted labor Cost Currency ID
BGT_FIXED_COST_VALUE	NUMBER	22	18	Budgeted fixed cost value
BGT_FIXED_COST_CURRENCY	NUMBER	22	4	Budgeted fixed Cost Currency ID
BGT_CAPITAL_EXPENSES_VALUE	NUMBER	22	18	Budgeted capital value
BGT_CAPITAL_EXPENSES_CURRENCY	NUMBER	22	4	Budgeted capital Currency ID
BGT_FLEX_COST_VALUE	NUMBER	22	18	Budgeted flex cost value
BGT_FLEX_COST_CURRENCY	NUMBER	22	4	Budgeted flex cost currency ID
BGT_TOTAL_COST_VALUE	NUMBER	22	18	Budgeted total cost
BGT_TOTAL_COST_CURRENCY	NUMBER	22	4	Budgeted total cost currency ID
PERCENT_COMPLETE	NUMBER	22		Activity Percent Complete
OVERALL_STATUS	NUMBER	22		Overall status of activity
DAYS_EFFORT	NUMBER	22		Days Effort of Activity
DISPLAY_ORDER	NUMBER	22		Display Order In Parent'S Schedule

Column	Type	Size	Precision	Comments
EST_START_DATE	DATE	7		Estimated start date
EST_END_DATE	DATE	7		Estimated end date
EST_DURATION	NUMBER	22		Estimated Duration
EST_VARIANCE	NUMBER	22		Estimated Variance
STATUS_ID	NUMBER	22	22	Status
STATUSTYPE_ID	NUMBER	22	22	Type ID
OWNER_ID	NUMBER	22	22	Owner ID
ACT_CREATE_DATE	DATE	7		Actual Create Date
DELETE_FLAG	NUMBER	22	1	Identify if this is a deleted object. 1-Deleted; 0-Not Deleted
CREATE_DATE	DATE	7		Create Date
UPDATE_DATE	DATE	7		Update Date

ODM_ACTIVITY_DEPENDENCY

Column	Type	Size	Precision	Comments
FROM_ID	NUMBER	22	22	Predecessor Activity ID
TO_ID	NUMBER	22	22	Successor Activity ID
TYPE_ID	NUMBER	22	22	0 (INTERNAL DEPENDENCY) / 1 (EXTERNAL DEPENDENCY)
TIME_BUFFER	NUMBER	22		Dependency time buffer
NOTIFICATION_SENT	NUMBER	22	1	0 (Notification not sent) / 1 (Notification sent)
EXTERNAL_FLG_ID	NUMBER	22	1	Whether Activity is external or internal to the current program tree
DELETE_FLAG	NUMBER	22	1	Identify if this is a deleted object. 1-Deleted; 0-Not Deleted
CREATE_DATE	DATE	7		Create Date
UPDATE_DATE	DATE	7		Update Date

ODM_AGILEUSER

Column	Type	Size	Precision	Comments
ACCEPTACLPROPAGATION	NUMBER	22	22	Accept ACL Propagation Flag.
DELETE_FLAG	NUMBER	22	1	Identify if this is a deleted object. 1-Deleted; 0-Not Deleted
CREATE_DATE	DATE	7		Created on
UPDATE_DATE	DATE	7		Last updated on
ID	NUMBER	22	22	Out of the box, the value is a foreign key to ODM_USERS_OBJ_D.ENTRY_ID column
CLASS_ID	NUMBER	22	22	User objects Class ID(5002)
SUBCLASS_ID	NUMBER	22	22	User objects Subclass ID(objtype=13)
CHANGECSTACCESS	NUMBER	22		Change cast access flag . 1 = Yes, 0 = No.
RECVNOTIFICATION	NUMBER	22		Can receive Notification. 1 = Yes, 0 = No.

Column	Type	Size	Precision	Comments
DAYLIGHTSAVING	NUMBER	22		User uses daylight savings. 1 = Yes, 0 = No.
SHOWWCMTIPS	NUMBER	22		Reserved Field. 1 = Yes, 0 = No.
ALLOWESCALATION	NUMBER	22		Allow Escalation Designation Approval .1 = Always, 2= After Escalation
LICENSE	NUMBER	22		User License Category.0 for Restricted ,1 for Concurrent,2 for Power
ROWPERPAGE	NUMBER	22		Not being used in 9.x versions .
COMMENTS	VARCHAR2	256		Comment about User
DATEFORMAT	NUMBER	22	5	User preferred Date format
TIMEFORMAT	NUMBER	22	5	User preferred Time Format
EMAIL	VARCHAR2	256		User Email address
FAX	VARCHAR2	256		User Fax Number
LOGINID	VARCHAR2	256		User Login Identifier
PAGER	VARCHAR2	256		User Pager Number
WORK_PHONE	VARCHAR2	256		User Work Phone
STARTUPURL	VARCHAR2	256		Not being used in 9.x
TIMEZONE	NUMBER	22	5	User Time Zone
ENABLED	NUMBER	22		1 for Active .0 for Inactive
LOCALE_CODE	NUMBER	22	5	Locale code is not null and indicates the locale setting for the user. 0 for English. 1 for Japanese.2 for Traditional Chinese. 3 for French. 4 for Simplified Chinese. 5 for German
FIRST_NAME	VARCHAR2	256		User First name
MIDDLE_INITIAL	VARCHAR2	256		User Middle name initial
LAST_NAME	VARCHAR2	256		User last name
TITLE	VARCHAR2	256		User Title
ADDRESS	VARCHAR2	2160		User Address
CITY	VARCHAR2	256		User City
COUNTRY	VARCHAR2	128		User Country.Out of the box, the value is a foreign key to ODM_COUNTRY_D.ENTRY_ID column
STATE	VARCHAR2	256		User State. Out of the box, the value is a foreign key to ODM_REGION_D.ENTRY_ID column
ZIP	VARCHAR2	128		User Zip code
MOBILE	VARCHAR2	256		User Mobile Number
HOME_PHONE	VARCHAR2	256		User Home phone number
PREFERRED_CLIENT	NUMBER	22		User preferred client.1 for Web Client.2 for Java Client
NUMBER_FORMAT	NUMBER	22		User preferred number format.0 for 987,654,321.09. 3 for 987 654 321.09
PREFERRED_IFS	NUMBER	22		User preferred Agile File Server.
DEFAULT_SITE	NUMBER	22		Users default Site Identifier.
LOGIN_PWD	VARCHAR2	96		User Encrypted Login password.
APPROVER_PWD	VARCHAR2	96		User Encrypted approver password
USE_LOGIN_PWD	NUMBER	22		0 for No .1 for Yes to use login password for Approvals

Column	Type	Size	Precision	Comments
OBJVERSION	NUMBER	22		Reserved Field
UPGRADE_USER	NUMBER	22		1 for this user is migrated for a legacy agile system. NULL for this user is newly created in this system.
FLAGS	VARCHAR2	32		Reserved Field
CURRENCY	NUMBER	22	4	Preferred Currency Code
HOME_ORG	NUMBER	22		Out of the box, the value is a foreign key to ODM_ORGANIZATION_OBJ_D.ENTRY_ID column
RESPONSE_EDIT_MODE	NUMBER	22		Home Organization
SYSTEM_ACCOUNT	NUMBER	22		Reserved Field
USER_AUTO_FORWARD_TO_FK	NUMBER	22	12	Reserved Field
USER_RFQ_AUTOFWD_ENABLED_FLAG	NUMBER	22	1	Reserved Field
USER_NEW_RFQ_NOTI_FLAG	NUMBER	22	1	Reserved Field
USER_REQUOTE_RFQ_NOTI_FLAG	NUMBER	22	1	Reserved Field
USER_ATH_ACCESS_NOTI_FLAG	NUMBER	22	1	Reserved Field
USER_RFQ_FORWARDED_NOTI_FLAG	NUMBER	22	1	Reserved Field
USER_AUTO_FORWARD_START_DATE	DATE	7		Reserved Field
USER_AUTO_FORWARD_END_DATE	DATE	7		Reserved Field
EMAIL1	VARCHAR2	256		Secondary email address
DEFAULT_SHIPTO	NUMBER	22		Out of the box, the value is a foreign key to ODM_SHIP_LOCATION_OBJ_D.ENTRY_ID column
LABOR_RATE	NUMBER	22	18	User's hourly rate (value)
LABOR_RATE_CURRENCY	NUMBER	22		User's hourly rate currency code
OVERHEAD_RATE	NUMBER	22	18	User Overhead rate
OVERHEAD_RATE_CURRENCY	NUMBER	22		Overhead rate currency code
BILL_RATE	NUMBER	22	18	Bill rate(hourly)
BILL_RATE_CURRENCY	NUMBER	22		Bill rate currency code
WORKWEEK_PREF	VARCHAR2	30		Workweek preference
GUID	VARCHAR2	256		Reserved Field
LICENSE_POOL	NUMBER	22		Reserved Field
PREFINBOXVIEW	NUMBER	22	2	User In box preference.1 for Workflow.2 for Activities.3 for Notifications
PREFSTARTPAGE	NUMBER	22	12	Reserved Field
PREFPROGRAMVIEW	NUMBER	22	2	Reserved Field
DAYNIGHTSAVING	NUMBER	22	1	Reserved Field
RECYCLEBINSEARCH	NUMBER	22	1	Reserved Field
HTML_TABLE_SCROLLING	NUMBER	22	1	Reserved Field
AUTH_SRC	VARCHAR2	35		Reserved Field
LISTS	VARCHAR2	30		11 for Change Analyst List. 12 for Component Engineer List. 13 for Price Administrator List.14 for Quality Administrator List.15 for Quality Analyst List
SEARCHES	VARCHAR2	192		11 for Change Analyst Searches.12 for Component Engineer Searches.13 for Content Manager Searches.14 for Price Searches.15 for Program Searches.16 for Quality Searches.17 for Supplier RFQ Searches.18 for Sourcing Searches

Column	Type	Size	Precision	Comments
PROGRAM_TYPE	VARCHAR2	400		Out of the box, the value is a foreign key to ODM_PROGRAM_TYPE_D.ENTRY_ID column
REGION	VARCHAR2	400		Out of the box, the value is a foreign key to ODM_REGION_LIST_D.ENTRY_ID column
DIVISION	VARCHAR2	400		Out of the box, the value is a foreign key to ODM_DIVISION_D.ENTRY_ID column
PRODUCT_LINE	VARCHAR2	400		Out of the box, the value is a foreign key to ODM_PROD_LINE_D.ENTRY_ID column
CUSTOMER	VARCHAR2	400		Out of the box, the value is a foreign key to ODM_CUSTOMER_D.ENTRY_ID column
LAUNCH_YEAR	VARCHAR2	400		Out of the box, the value is a foreign key to ODM_LAUNCH_YEAR_LIST_D.ENTRY_ID column
CATEGORY7	VARCHAR2	400		Out of the box, the value is a foreign key to ODM_CATEGORY7_LIST_D.ENTRY_ID column
CATEGORY8	VARCHAR2	400		Out of the box, the value is a foreign key to ODM_CATEGORY8_LIST_D.ENTRY_ID column
CATEGORY9	VARCHAR2	400		Out of the box, the value is a foreign key to ODM_CATEGORY9_LIST_D.ENTRY_ID column
CATEGORY10	VARCHAR2	400		Out of the box, the value is a foreign key to ODM_CATEGORY10_LIST_D.ENTRY_ID column
PREFERRED_TOOLBAR	NUMBER	22		Web client.1 for Icons Only, 2 for Text only, 3 for Icons and Text
PREFERRED_PORTAL_URL	NUMBER	22		UI specific
GEOGRAPHY	NUMBER	22	10	Out of the box, the value is a foreign key to ODM_LOCATION_D.ENTRY_ID column
MAXIMUM_ROWS_DISPLAYED	NUMBER	22		UI specific
ENCODE_TYPE	NUMBER	22		Mode of file upload.
FILE_UPLOAD_MODE	NUMBER	22		UI upload option chosen by the user.
TABLE_PREFS	CLOB	4000		Reserved
STATICTABLEHEADERS	NUMBER	22	1	UI specific
MUST_CHANGE_PWD_FLG	NUMBER	22	1	UI specific
CREATE_USER_ID	NUMBER	22	22	Create user ID
DATE[01-15]_DATE	DATE	7		User defined field(s) of DATE type in PLM.
LIST[01-25]_ID	NUMBER	22	22	User defined field(s) of LIST type in PLM. Foreign Key to <configured List Dimension Table>.ENTRY_ID column. Refer to ODM_LISTDIM_CTL and ODM_DATA_DICTIONARY tables for identifying configured List Dimension table name.
MONEYCURRENCY[21-29]	NUMBER	22	4	Stores the Currency Code for the user defined field(s) of MONEY type in PLM
MONEYVALUE[21-29]	NUMBER	22	18	Stores the money value for the user defined field(s) of MONEY type in PLM
MULTILIST[01-15]	VARCHAR2	765		User defined field(s) of MULTILIST type on PLM. Stores comma seperated list of entry IDs from the configured List Dimension table. These comma seperated values are resolved and stored into ODM_<Table Name>_<Column Name>_MAP table.
NUMERIC[01-10]	NUMBER	22		User defined field(s) of NUMERIC type in PLM.
TEXT[01-25]	VARCHAR2	450		User defined field(s) of TEXT type in PLM.

ODM_APPROVAL_ITEMS

Column	Type	Size	Precision	Comments
GATE_ID	NUMBER	22	22	Gate Object ID
ACTIVITY_ID	NUMBER	22	22	Activity ID
DELETE_FLAG	NUMBER	22	1	Identify if this is a deleted object. 1-Deleted; 0-Not Deleted
CREATE_DATE	DATE	7		Create Date
UPDATE_DATE	DATE	7		Update Date
DATE[01-05]_DATE	DATE	7		User defined field(s) of DATE type in PLM.
LIST[01-05]_ID	NUMBER	22	22	User defined field(s) of LIST type in PLM. Foreign Key to <configured List Dimension Table>.ENTRY_ID column. Refer to ODM_LISTDIM_CTL and ODM_DATA_DICTIONARY tables for identifying configured List Dimension table name.
MULTILIST[01-03]	VARCHAR2	255		User defined field(s) of MULTILIST type on PLM. Stores comma separated list of entry IDs from the configured List Dimension table. These comma separated values are resolved and stored into ODM_<Table Name>_<Column Name>_MAP table.
NUMERIC[01-05]	NUMBER	22		User defined field(s) of NUMERIC type in PLM.
TEXT[01-07]	VARCHAR2	150		User defined field(s) of TEXT type in PLM.

ODM_ASX_MAP

Column	Type	Size	Precision	Comments
OBJ_ID	NUMBER	22	22	Object ID of Items or Manufacturer Parts.
CLASS_ID	NUMBER	22	10	Object class ID.
OBJECT_CHANGE	NUMBER	22	10	
SITE_ID	NUMBER	22	22	Site ID
SUPPLIER_ID	NUMBER	22	22	Supplier(ORGANIZATION) ID
DELETE_FLAG	NUMBER	22	1	Identify if this is a deleted object. 1-Deleted; 0-Not Deleted
CREATE_DATE	DATE	7		Created on
UPDATE_DATE	DATE	7		Last updated on
ID	NUMBER	22	22	Unique ID
DATE[01-05]_DATE	DATE	7		User defined field(s) of DATE type in PLM.
LIST[01-05]_ID	NUMBER	22	22	User defined field(s) of LIST type in PLM. Foreign Key to <configured List Dimension Table>.ENTRY_ID column. Refer to ODM_LISTDIM_CTL and ODM_DATA_DICTIONARY tables for identifying configured List Dimension table name.
MULTILIST[01-03]	VARCHAR2	255		User defined field(s) of MULTILIST type on PLM. Stores comma separated list of entry IDs from the configured List Dimension table. These comma separated values are resolved and stored into ODM_<Table Name>_<Column Name>_MAP table.

Column	Type	Size	Precision	Comments
NUMERIC[01-05]	NUMBER	22		User defined field(s) of NUMERIC type in PLM.
TEXT[01-05]	VARCHAR2	150		User defined field(s) of TEXT type in PLM.

ODM_ATT_FILE_FLDR

Column	Type	Size	Precision	Comments
ACCEPTACLPROPAGATION	NUMBER	22	22	Accept ACL Propagation Flag.
DELETE_FLAG	NUMBER	22	1	Identify if this is a deleted object. 1-Deleted; 0-Not Deleted
CREATE_DATE	DATE	7		Created on
UPDATE_DATE	DATE	7		Last updated on
ID	NUMBER	22	22	Unique ID
CLASS_ID	NUMBER	22	22	ID of file folder class(6159)
SUBCLASS_ID	NUMBER	22	22	Out of the box, the value is a foreign key to ODM_FILE_FLDR_TYPE_OBJ_D.ENTRY_ID column
ATTACHMENT_NUMBER	VARCHAR2	150		File folder number
OBJVERSION	NUMBER	22		Object version Number
LATEST_VSN	NUMBER	22		Latest version of the file folder
DESCRIPTION	VARCHAR2	4000		File Folder description
CHECKOUT_USER_ID	NUMBER	22	22	Out of the box, the value is a foreign key to ODM_USERS_OBJ_D.ENTRY_ID column
CHECKOUT_DATE	DATE	7		Date attachment was checked out.
CHECKOUT_FOLDER	VARCHAR2	3000		File path of checked out attachment
FLAGS	VARCHAR2	32		0 (FALSE)/1 (TRUE) for each position in the flag
BASEATTACH_ID	NUMBER	22	22	ID of the original copy of attachment
ATTACHMENTTYPE_ID	NUMBER	22	22	ID of attachment file type
COMPONENT_TYPE	NUMBER	22		Type of the component attachment.
CREATE_USER_ID	NUMBER	22	22	Create user ID
DATE[01-15]_DATE	DATE	7		User defined field(s) of DATE type in PLM.
LIST[01-25]_ID	NUMBER	22	22	User defined field(s) of LIST type in PLM. Foreign Key to <configured List Dimension Table>.ENTRY_ID column. Refer to ODM_LISTDIM_CTL and ODM_DATA_DICTIONARY tables for identifying configured List Dimension table name.
MONEYCURRENCY[20-29]	NUMBER	22	4	Stores the Currency Code for the user defined field(s) of MONEY type in PLM
MONEYVALUE[20-25]	NUMBER	22	18	Stores the money value for the user defined field(s) of MONEY type in PLM
MULTILIST[01-15]	VARCHAR2	765		User defined field(s) of MULTILIST type on PLM. Stores comma seperated list of entry IDs from the configured List Dimension table. These comma seperated values are resolved and stored into ODM_<Table Name>_<Column Name>_MAP table.
NUMERIC[01-10]	NUMBER	22		User defined field(s) of NUMERIC type in PLM.
TEXT[01-25]	VARCHAR2	450		User defined field(s) of TEXT type in PLM.

ODM_ATT_HIST_RPT_FF

Column	Type	Size	Precision	Comments
DELETE_FLAG	NUMBER	22	1	Identify if this is a deleted object. 1-Deleted; 0-Not Deleted
CREATE_DATE	DATE	7		Created on
UPDATE_DATE	DATE	7		Last updated on
ID	NUMBER	22	22	Unique ID
CLASS_ID	NUMBER	22	22	ID of file folder class(6367)
SUBCLASS_ID	NUMBER	22	22	Out of the box, the value is a foreign key to ODM_FILE_FLDR_TYPE_OBJ_D.ENTRY_ID column
ATTACHMENT_NUMBER	VARCHAR2	150		File folder number
OBJVERSION	NUMBER	22		Object version Number
LATEST_VSN	NUMBER	22		Latest version of the file folder
DESCRIPTION	VARCHAR2	4000		File Folder description
CHECKOUT_USER_ID	NUMBER	22	22	Out of the box, the value is a foreign key to ODM_USERS_OBJ_D.ENTRY_ID column
CHECKOUT_DATE	DATE	7		Date attachment was checked out.
CHECKOUT_FOLDER	VARCHAR2	3000		File path of checked out attachment
FLAGS	VARCHAR2	32		0 (FALSE)/1 (TRUE) for each position in the flag
BASEATTACH_ID	NUMBER	22	22	ID of the original copy of attachment
ATTACHMENTTYPE_ID	NUMBER	22	22	ID of attachment file type
COMPONENT_TYPE	NUMBER	22		Type of the component attachment.
CREATE_USER_ID	NUMBER	22	22	Create user ID
ACCEPTACLPROPAGATION	NUMBER	22	22	Accept ACL Propagation Flag.
DATE[01-15]_DATE	DATE	7		User defined field(s) of DATE type in PLM.
LIST[01-25]_ID	NUMBER	22	22	User defined field(s) of LIST type in PLM. Foreign Key to <configured List Dimension Table>.ENTRY_ID column. Refer to ODM_LISTDIM_CTL and ODM_DATA_DICTIONARY tables for identifying configured List Dimension table name.
MONEYCURRENCY[20-29]	NUMBER	22	4	Stores the Currency Code for the user defined field(s) of MONEY type in PLM
MONEYVALUE[20-29]	NUMBER	22	18	Stores the money value for the user defined field(s) of MONEY type in PLM
MULTILIST[01-15]	VARCHAR2	765		User defined field(s) of MULTILIST type on PLM. Stores comma seperated list of entry IDs from the configured List Dimension table. These comma seperated values are resolved and stored into ODM_<Table Name>_<Column Name>_MAP table.
NUMERIC[01-10]	NUMBER	22		User defined field(s) of NUMERIC type in PLM.
TEXT[01-25]	VARCHAR2	450		User defined field(s) of TEXT type in PLM.

ODM_ATTACHMENT_MAP

Column	Type	Size	Precision	Comments
FLAGS	VARCHAR2	32		0 (FALSE)/1 (TRUE) for each position in the flag.
VERSION_ID	NUMBER	22	22	Map to version ID
ATTACHMENTTYPE_ID	NUMBER	22	22	ID of attachment file type
FILE_ID	NUMBER	22		ID of the file image w.r.t. the version
LATEST_VSN	NUMBER	22		Latest version of the file folder
DELETE_FLAG	NUMBER	22	1	Identify if this is a deleted object. 1-Deleted; 0-Not Deleted
CREATE_DATE	DATE	7		Creatr date of file attachment map
UPDATE_DATE	DATE	7		Update date of file attachment map
ID	NUMBER	22	22	Unique ID
CLASS_ID	NUMBER	22	22	Id of the classs that has attachment
PARENT_ID	NUMBER	22	22	Id of the Object that has the attachment.
PARENT_ID2	NUMBER	22	22	Secondary Id of the Object that has the attachment.
ATTACH_ID	NUMBER	22	22	File folder object ID
VERSION	NUMBER	22		File folder version number
DATE[01-05]_DATE	DATE	7		User defined field(s) of DATE type in PLM.
LIST[01-25]_ID	NUMBER	22	22	User defined field(s) of LIST type in PLM. Foreign Key to <configured List Dimension Table>.ENTRY_ID column. Refer to ODM_LISTDIM_CTL and ODM_DATA_DICTIONARY tables for identifying configured List Dimension table name.
MULTILIST[01-03]	VARCHAR2	255		User defined field(s) of MULTILIST type on PLM. Stores comma seperated list of entry IDs from the configured List Dimension table. These comma seperated values are resolved and stored into ODM_<Table Name>_<Column Name>_MAP table.
NUMERIC[01-05]	NUMBER	22		User defined field(s) of NUMERIC type in PLM.
TEXT[01-25]	VARCHAR2	150		User defined field(s) of TEXT type in PLM.

ODM_ATTR_METADATA

Column	Type	Size	Precision	Comments
CLASS_ID	NUMBER	22	22	Class ID of attribute defined in agile PLM
BASEID	NUMBER	22	22	Base Class ID of attribute defined in agile PLM
CLASSID	NUMBER	22	22	Class ID of attribute defined in agile PLM
SUBCLASSID	NUMBER	22	22	Sub-Class ID of attribute defined in agile PLM
ATT_ID	NUMBER	22	22	Attribute ID of attribute defined in agile PLM
ATT_NAME	VARCHAR2	600		Attribute name
CUST_ATT_ID	NUMBER	22	22	Attribute ID for customer overridden attributein agile PLM
CUST_ATT_NAME	VARCHAR2	600		Customer configured attribute name for attribute overridden in agile PLM
SELECTION_ID	NUMBER	22	22	List ID for List or MultiList attributes
ATT_TYPE	VARCHAR2	50		Attribute Type

Column	Type	Size	Precision	Comments
ATT_ENABLED	NUMBER	22		Flag that indicates if attribute is enabled. 0 if Disabled and 1 if Enabled
CLASS_LEVEL	NUMBER	22		Reserved
LIST_IND	NUMBER	22		Indicates if list assigned to attribute is Simple(1), Cascade (2) or Dynamic List (3).
MAXLENGTH	NUMBER	22		Maximum length allowed by PLM
REQUIRED	NUMBER	22		Agile PLM requires that values are provided for this attribute. 1 - Required
FLEX	NUMBER	22		Is it a User Defined flex attribute? 0 - not a Flex attribute, 1 - Flex Attribute
INHERIT	NUMBER	22		Is it inherited from Base Class or Class: 1 - yes, 0 - no
TAB	VARCHAR2	100		Name of Agile PLM object tab to which this attribute belongs.
CREATE_DATE	DATE	7		Create Date
UPDATE_DATE	DATE	7		Update Date

ODM_BASELINE_REV

Column	Type	Size	Precision	Comments
BASLINE_ID	NUMBER	22	22	Unique identifier
ACT_ID	NUMBER	22	22	Item number
REV	NUMBER	22		Change object number
REV_DESC	VARCHAR2	1350		Revision number label
CREATEDATE_DATE	DATE	7		Baseline create date
KICKOFF_BASELINE	NUMBER	22	1	Starting revision of the Item
POR_BASELINE	NUMBER	22	1	End revision of the Item
MILESTONE	NUMBER	22		Targeted revision of the Item
DELETE_FLAG	NUMBER	22	1	Identify if this is a deleted object. 1-Deleted; 0-Not Deleted
CREATE_DATE	DATE	7		Create date
UPDDATE_DATE	DATE	7		Update date

ODM_BOM

Column	Type	Size	Precision	Comments
ID	NUMBER	22	22	Unique id
ITEM_ID	NUMBER	22	22	ID of parent item
ITEM_NUMBER	VARCHAR2	450		Item number of Child Item
FIND_NUMBER	VARCHAR2	96		Line item (find) number
SEQ	NUMBER	22	5	Sequence
QUANTITY	VARCHAR2	120		Quantity of child item
DESCRIPTION	VARCHAR2	4000		BOM description
NOTES	VARCHAR2	3999		BOM notes
CHANGE_IN	NUMBER	22	10	Change ID bringing in the child item

Column	Type	Size	Precision	Comments
CHANGE_OUT	NUMBER	22	10	Change ID bringing out the child item
PRIOR_BOM	NUMBER	22	10	ID of line item to be replaced
FLAGS	VARCHAR2	96		0 (FALSE)/1 (TRUE) for each position
COMPONENT	NUMBER	22		ID of compoent item (item_number)
SITE_ID	NUMBER	22	22	0 or valid sites.id -default 0
DELETE_FLAG	NUMBER	22	1	Identify if this is a deleted object. 1-Deleted; 0-Not Deleted
CREATE_DATE	DATE	7		Create date
UPDATE_DATE	DATE	7		Update date
DATE[01-05]_DATE	DATE	7		User defined field(s) of DATE type in PLM.
LIST[01-10]_ID	NUMBER	22	22	User defined field(s) of LIST type in PLM. Foreign Key to <configured List Dimension Table>.ENTRY_ID column. Refer to ODM_LISTDIM_CTL and ODM_DATA_DICTIONARY tables for identifying configured List Dimension table name.
NUMERIC[01-05]	NUMBER	22		User defined field(s) of NUMERIC type in PLM.
TEXT[01-05]	VARCHAR2	150		User defined field(s) of TEXT type in PLM.

ODM_CHANGE_HISTORY

Column	Type	Size	Precision	Comments
ID	NUMBER	22	22	Unique ID
CLASS_ID	NUMBER	22	22	Class ID
PREV_STATUS_ID	NUMBER	22	22	ID of previous status
USER_TYPE_ID	NUMBER	22	22	ID for type of users
USER_ID	NUMBER	22	22	ID of user that logged the change entry
EVENT_TYPE_ID	NUMBER	22	22	Event type
CHANGE_ID	NUMBER	22	22	Object ID
FIND_NUMBER	VARCHAR2	510		Line item/mfrPart
AFFECTED_ITEM_ID	NUMBER	22	22	Item affected
TIMESTAMP	DATE	7		Time and date when action was taken
DETAILS	CLOB	4000		Details about the Action/Change that occurred
COMMENTS	VARCHAR2	4000		User comments on the change
PROCESSED	NUMBER	22		Internal flag for email notification . 0 ALREADY_PROCESSED 1 PROCESS_NORMAL 2 PROCESS_URGENT 3 PROCESS_NORMAL_PROCESSED (for reminder and escalation) 4 PROCESS_URGENT_PROCESSED (for reminder and escalation)
LOCAL_DATE	DATE	7		Local client date
TIMEZONE_ID	NUMBER	22	22	Timezone of the client
NEXT_STATUS_ID	NUMBER	22	22	Next status of the workflow
SITE_ID	NUMBER	22	22	Site ID

Column	Type	Size	Precision	Comments
APPROVE_FOR_GROUP	VARCHAR2	255		An indicator that shows if an approve action is for an individual or for a group.1 for group
USER_NAME	VARCHAR2	520		agileuser.firstname and lastname
AFFECTED_OBJECT_CLASS_ID	NUMBER	22	22	Stores class of the affected object when an affected objects status CHANGE IS triggered BY a relationships controlling OBJECT.
VERSION	NUMBER	22		
DELETE_FLAG	NUMBER	22	1	Identify if this is a deleted object. 1-Deleted; 0-Not Deleted
CREATE_DATE	DATE	7		Created on
UPDATE_DATE	DATE	7		Last Updated on

ODM_CHNG_CHG_ORDERS

Column	Type	Size	Precision	Comments
ACCEPTACLPROPAGATION	NUMBER	22	22	Accept ACL Propagation Flag.
DELETE_FLAG	NUMBER	22	1	Identify if this is a deleted object. 1-Deleted; 0-Not Deleted
CREATE_DATE	DATE	7		Create date
UPDATE_DATE	DATE	7		Update date
ID	NUMBER	22	22	Unique ID
CLASS_ID	NUMBER	22	22	Class ID
SUBCLASS_ID	NUMBER	22	22	Sub class ID
CHANGE_NUMBER_ID	VARCHAR2	270		Change number
CATEGORY_ID	NUMBER	22	22	Out of the box, the value is a foreign key to ODM_CHANGE_CATEGORY_D.ENTRY_ID column
STATUS_ID	NUMBER	22	22	Status
REASON_CODE_ID	NUMBER	22	22	Out of the box, the value is a foreign key to ODM_REASONCODE_D.ENTRY_ID column
ORIGINATOR_ID	NUMBER	22	22	Out of the box, the value is a foreign key to ODM_USERS_OBJ_D.ENTRY_ID column.
OWNER_ID	NUMBER	22	22	Out of the box, the value is a foreign key to ODM_USERS_OBJ_D.ENTRY_ID column
RESUME_DATE	DATE	7		Date stopship was resumed
EFFECTIVE_FROM_DATE	DATE	7		Effective from Date
EFFECTIVE_TO_DATE	DATE	7		Effective to Date
RELEASE_DATE	DATE	7		Release date of the change orders
DESCRIPTION	VARCHAR2	4000		Description of change orders
REASON	VARCHAR2	4000		Reason of change orders
TRANSFERRED	VARCHAR2	384		Change transfer flags
OBJVERSION	NUMBER	22		Object version
SUBMIT_DATE	DATE	7		Submit date of change orders
ROUTE_DATE	DATE	7		Date Change Was Routed
PRODUCT_LINES	VARCHAR2	765		Out of the box, the value is a foreign key to ODM_PRODUCT_LINES_D.ENTRY_ID column

Column	Type	Size	Precision	Comments
FLAGS	VARCHAR2	96		Reserved Field
WORKFLOW_ID	NUMBER	22	22	Workflow ID
STATUSTYPE_ID	NUMBER	22	22	Out of the box, the value is a foreign key to ODM_STATUS_TYPE_D.ENTRY_ID column
FINALCOMPLETE_DATE	DATE	7		Close date of change orders
PROCESS_ID	NUMBER	22	22	Process ID of change orders
IN_REVIEW	NUMBER	22		If the object is at REVIEW status type, it is 1
ENCODE_NAME	VARCHAR2	900		An upper case version of the Name field
CREATE_USER_ID	NUMBER	22	22	Create user ID
DATE[01-15]_DATE	DATE	7		User defined field(s) of DATE type in PLM.
LIST[01-25]_ID	NUMBER	22	22	User defined field(s) of LIST type in PLM. Foreign Key to <configured List Dimension Table>.ENTRY_ID column. Refer to ODM_LISTDIM_CTL and ODM_DATA_DICTIONARY tables for identifying configured List Dimension table name.
MONEYCURRENCY[20-29]	NUMBER	22	4	Stores the Currency Code for the user defined field(s) of MONEY type in PLM
MONEYVALUE[20-29]	NUMBER	22	18	Stores the money value for the user defined field(s) of MONEY type in PLM
MULTILIST[01-15]	VARCHAR2	765		User defined field(s) of MULTILIST type on PLM. Stores comma seperated list of entry IDs from the configured List Dimension table. These comma seperated values are resolved and stored into ODM_<Table Name>_<Column Name>_MAP table.
NUMERIC[01-10]	NUMBER	22		User defined field(s) of NUMERIC type in PLM.
TEXT[01-25]	VARCHAR2	450		User defined field(s) of TEXT type in PLM.

ODM_CHNG_CHG_REQS

Column	Type	Size	Precision	Comments
ID	NUMBER	22	22	Unique ID
CLASS_ID	NUMBER	22	22	Class ID
SUBCLASS_ID	NUMBER	22	22	Sub class ID
CHANGE_NUMBER_ID	VARCHAR2	270		Change number
CATEGORY_ID	NUMBER	22	22	Out of the box, the value is a foreign key to ODM_CHANGE_CATEGORY_D.ENTRY_ID column
STATUS_ID	NUMBER	22	22	Status
REASON_CODE_ID	NUMBER	22	22	Out of the box, the value is a foreign key to ODM_REASONCODE_D.ENTRY_ID column
ORIGINATOR_ID	NUMBER	22	22	Out of the box, the value is a foreign key to ODM_USERS_OBJ_D.ENTRY_ID column.
OWNER_ID	NUMBER	22	22	Out of the box, the value is a foreign key to ODM_USERS_OBJ_D.ENTRY_ID column
RESUME_DATE	DATE	7		Date stopship was resumed
EFFECTIVE_FROM_DATE	DATE	7		Effective from date
EFFECTIVE_TO_DATE	DATE	7		Effective to date
RELEASE_DATE	DATE	7		Release date of the requested changes
DESCRIPTION	VARCHAR2	4000		Description of requested changes

Column	Type	Size	Precision	Comments
REASON	VARCHAR2	4000		Reason of requested changes
TRANSFERRED	VARCHAR2	384		Change Transfer Flags
OBJVERSION	NUMBER	22		Object version
SUBMIT_DATE	DATE	7		Submit date of requested changes
ROUTE_DATE	DATE	7		Date change was routed
PRODUCT_LINES	VARCHAR2	765		Out of the box, the value is a foreign key to ODM_PRODUCT_LINES_D.ENTRY_ID column
FLAGS	VARCHAR2	96		Reserved Field
WORKFLOW_ID	NUMBER	22	22	Workflow ID
STATUSTYPE_ID	NUMBER	22	22	Out of the box, the value is a foreign key to ODM_STATUS_TYPE_D.ENTRY_ID column
FINALCOMPLETE_DATE	DATE	7		Close date of requested changes
PROCESS_ID	NUMBER	22	22	Process ID of requested changes
IN_REVIEW	NUMBER	22		If the object is at REVIEW status type, it is 1
ENCODE_NAME	VARCHAR2	900		An upper case version of the Name field
CREATE_USER_ID	NUMBER	22	22	Create user ID
ACCEPTACLPROPAGATION	NUMBER	22	22	Accept ACL Propagation Flag.
DELETE_FLAG	NUMBER	22	1	Identify if this is a deleted object. 1-Deleted; 0-Not Deleted
CREATE_DATE	DATE	7		Create date
UPDATE_DATE	DATE	7		Update date
DATE[01-15]_DATE	DATE	7		User defined field(s) of DATE type in PLM.
LIST[01-25]_ID	NUMBER	22	22	User defined field(s) of LIST type in PLM. Foreign Key to <configured List Dimension Table>.ENTRY_ID column. Refer to ODM_LISTDIM_CTL and ODM_DATA_DICTIONARY tables for identifying configured List Dimension table name.
MONEYCURRENCY[20-29]	NUMBER	22	4	Stores the Currency Code for the user defined field(s) of MONEY type in PLM
MONEYVALUE[20-29]	NUMBER	22	18	Stores the money value for the user defined field(s) of MONEY type in PLM
MULTILIST[01-15]	VARCHAR2	765		User defined field(s) of MULTILIST type on PLM. Stores comma seperated list of entry IDs from the configured List Dimension table. These comma seperated values are resolved and stored into ODM_<Table Name>_<Column Name>_MAP table.
NUMERIC[01-10]	NUMBER	22		User defined field(s) of NUMERIC type in PLM.
TEXT[01-25]	VARCHAR2	450		User defined field(s) of TEXT type in PLM.

ODM_CHNG_DEVIATION

Column	Type	Size	Precision	Comments
ID	NUMBER	22	22	Unique ID
CLASS_ID	NUMBER	22	22	Class ID
SUBCLASS_ID	NUMBER	22	22	Sub class ID
CHANGE_NUMBER_ID	VARCHAR2	270		Change number

Column	Type	Size	Precision	Comments
CATEGORY_ID	NUMBER	22	22	Out of the box, the value is a foreign key to ODM_CHANGE_CATEGORY_D.ENTRY_ID column
STATUS_ID	NUMBER	22	22	Status
REASON_CODE_ID	NUMBER	22	22	Out of the box, the value is a foreign key to ODM_REASONCODE_D.ENTRY_ID column
ORIGINATOR_ID	NUMBER	22	22	Out of the box, the value is a foreign key to ODM_USERS_OBJ_D.ENTRY_ID column.
OWNER_ID	NUMBER	22	22	Out of the box, the value is a foreign key to ODM_USERS_OBJ_D.ENTRY_ID column
RESUME_DATE	DATE	7		Date stopship was resumed
EFFECTIVE_FROM_DATE	DATE	7		Effective from date
EFFECTIVE_TO_DATE	DATE	7		Effective to date
RELEASE_DATE	DATE	7		Release date of change deviation
DESCRIPTION	VARCHAR2	4000		Description of change deviation
REASON	VARCHAR2	4000		Reason of change deviation
TRANSFERRED	VARCHAR2	384		Change transfer flags
OBJVERSION	NUMBER	22		Object version
SUBMIT_DATE	DATE	7		Submit date of change deviation
ROUTE_DATE	DATE	7		Date change was routed
PRODUCT_LINES	VARCHAR2	765		Out of the box, the value is a foreign key to ODM_PRODUCT_LINES_D.ENTRY_ID column
FLAGS	VARCHAR2	96		Reserved Field
WORKFLOW_ID	NUMBER	22	22	Workflow ID
STATUSTYPE_ID	NUMBER	22	22	Out of the box, the value is a foreign key to ODM_STATUS_TYPE_D.ENTRY_ID column
FINALCOMPLETE_DATE	DATE	7		Close date of change deviation
PROCESS_ID	NUMBER	22	22	Process ID of change deviation
IN_REVIEW	NUMBER	22		If the object is at REVIEW status type, it is 1
ENCODE_NAME	VARCHAR2	900		An upper case version of the Name field
CREATE_USER_ID	NUMBER	22	22	Create user ID
ACCEPTACLPROPAGATION	NUMBER	22	22	Accept ACL Propagation Flag.
DELETE_FLAG	NUMBER	22	1	Identify if this is a deleted object. 1-Deleted; 0-Not Deleted
CREATE_DATE	DATE	7		Create date
UPDATE_DATE	DATE	7		Update date
DATE[01-15]_DATE	DATE	7		User defined field(s) of DATE type in PLM.
LIST[01-25]_ID	NUMBER	22	22	User defined field(s) of LIST type in PLM. Foreign Key to <configured List Dimension Table>.ENTRY_ID column. Refer to ODM_LISTDIM_CTL and ODM_DATA_DICTIONARY tables for identifying configured List Dimension table name.
MONEYCURRENCY[20-29]	NUMBER	22	4	Stores the Currency Code for the user defined field(s) of MONEY type in PLM
MONEYVALUE[20-29]	NUMBER	22	18	Stores the money value for the user defined field(s) of MONEY type in PLM

Column	Type	Size	Precision	Comments
MULTILIST[01-15]	VARCHAR2	765		User defined field(s) of MULTILIST type on PLM. Stores comma separated list of entry IDs from the configured List Dimension table. These comma separated values are resolved and stored into ODM_<Table Name>_<Column Name>_MAP table.
NUMERIC[01-10]	NUMBER	22		User defined field(s) of NUMERIC type in PLM.
TEXT[01-25]	VARCHAR2	450		User defined field(s) of TEXT type in PLM.

ODM_CHNG_MFR_ORDERS

Column	Type	Size	Precision	Comments
ID	NUMBER	22	22	Unique ID
CLASS_ID	NUMBER	22	22	Class ID
SUBCLASS_ID	NUMBER	22	22	Sub class ID
CHANGE_NUMBER_ID	VARCHAR2	270		Change number
CATEGORY_ID	NUMBER	22	22	Out of the box, the value is a foreign key to ODM_CHANGE_CATEGORY_D.ENTRY_ID column
STATUS_ID	NUMBER	22	22	Status
REASON_CODE_ID	NUMBER	22	22	Out of the box, the value is a foreign key to ODM_REASONCODE_D.ENTRY_ID column
ORIGINATOR_ID	NUMBER	22	22	Out of the box, the value is a foreign key to ODM_USERS_OBJ_D.ENTRY_ID column.
OWNER_ID	NUMBER	22	22	Out of the box, the value is a foreign key to ODM_USERS_OBJ_D.ENTRY_ID column
RESUME_DATE	DATE	7		Date stopship was resumed
EFFECTIVE_FROM_DATE	DATE	7		Effective from date
EFFECTIVE_TO_DATE	DATE	7		Effective to date
RELEASE_DATE	DATE	7		Release date of the MFR orders
DESCRIPTION	VARCHAR2	4000		Description of the MFR orders
REASON	VARCHAR2	4000		Reason of MFR order
TRANSFERRED	VARCHAR2	384		Change transfer flags
OBJVERSION	NUMBER	22		Object version
SUBMIT_DATE	DATE	7		Submit date of MFR order
ROUTE_DATE	DATE	7		Date change was routed
PRODUCT_LINES	VARCHAR2	765		Out of the box, the value is a foreign key to ODM_PRODUCT_LINES_D.ENTRY_ID column
FLAGS	VARCHAR2	96		Reserved Field
WORKFLOW_ID	NUMBER	22	22	Workflow ID
STATUSTYPE_ID	NUMBER	22	22	Out of the box, the value is a foreign key to ODM_STATUS_TYPE_D.ENTRY_ID column
FINALCOMPLETE_DATE	DATE	7		Close date of the MFR order
PROCESS_ID	NUMBER	22	22	Process ID of MFR order
IN_REVIEW	NUMBER	22		If the object is at REVIEW status type, it is 1
ENCODE_NAME	VARCHAR2	900		An upper case version of the Name field
CREATE_USER_ID	NUMBER	22	22	Create user ID
ACCEPTACLPROPAGATION	NUMBER	22	22	Accept ACL Propagation Flag.

Column	Type	Size	Precision	Comments
DELETE_FLAG	NUMBER	22	1	Identify if this is a deleted object. 1-Deleted; 0-Not Deleted
CREATE_DATE	DATE	7		Create date
UPDATE_DATE	DATE	7		Update date
DATE[01-15]_DATE	DATE	7		User defined field(s) of DATE type in PLM.
LIST[01-25]_ID	NUMBER	22	22	User defined field(s) of LIST type in PLM. Foreign Key to <configured List Dimension Table>.ENTRY_ID column. Refer to ODM_LISTDIM_CTL and ODM_DATA_DICTIONARY tables for identifying configured List Dimension table name.
MONEYCURRENCY[20-29]	NUMBER	22	4	Stores the Currency Code for the user defined field(s) of MONEY type in PLM
MONEYVALUE[20-29]	NUMBER	22	18	Stores the money value for the user defined field(s) of MONEY type in PLM
MULTILIST[01-15]	VARCHAR2	765		User defined field(s) of MULTILIST type on PLM. Stores comma separated list of entry IDs from the configured List Dimension table. These comma separated values are resolved and stored into ODM_<Table Name>_<Column Name>_MAP table.
NUMERIC[01-10]	NUMBER	22		User defined field(s) of NUMERIC type in PLM.
TEXT[01-25]	VARCHAR2	450		User defined field(s) of TEXT type in PLM.

ODM_CHNG_PRICE_CHGORDERS

Column	Type	Size	Precision	Comments
ID	NUMBER	22	22	Unique ID
CLASS_ID	NUMBER	22	22	Class ID
SUBCLASS_ID	NUMBER	22	22	Sub class ID
CHANGE_NUMBER_ID	VARCHAR2	270		Change number
CATEGORY_ID	NUMBER	22	22	Out of the box, the value is a foreign key to ODM_CHANGE_CATEGORY_D.ENTRY_ID column
STATUS_ID	NUMBER	22	22	Status
REASON_CODE_ID	NUMBER	22	22	Out of the box, the value is a foreign key to ODM_REASONCODE_D.ENTRY_ID column
ORIGINATOR_ID	NUMBER	22	22	Out of the box, the value is a foreign key to ODM_USERS_OBJ_D.ENTRY_ID column.
OWNER_ID	NUMBER	22	22	Out of the box, the value is a foreign key to ODM_USERS_OBJ_D.ENTRY_ID column
RESUME_DATE	DATE	7		Date stopship was resumed
EFFECTIVE_FROM_DATE	DATE	7		Effective from date
EFFECTIVE_TO_DATE	DATE	7		Effective to date
RELEASE_DATE	DATE	7		Release date of price change orders
DESCRIPTION	VARCHAR2	4000		Description of price change orders
REASON	VARCHAR2	4000		Reason of price change orders
TRANSFERRED	VARCHAR2	384		Change transfer flags
OBJVERSION	NUMBER	22		Object version
SUBMIT_DATE	DATE	7		Submit date of price change orders
ROUTE_DATE	DATE	7		Date change was routed

Column	Type	Size	Precision	Comments
PRODUCT_LINES	VARCHAR2	765		Out of the box, the value is a foreign key to ODM_PRODUCT_LINES_D.ENTRY_ID column
FLAGS	VARCHAR2	96		Reserved Field
WORKFLOW_ID	NUMBER	22	22	Workflow ID
STATUSTYPE_ID	NUMBER	22	22	Out of the box, the value is a foreign key to ODM_STATUS_TYPE_D.ENTRY_ID column
FINALCOMPLETE_DATE	DATE	7		Close date of price change orders
PROCESS_ID	NUMBER	22	22	Process ID of price change orders
IN_REVIEW	NUMBER	22		If the object is at REVIEW status type, it is 1
ENCODE_NAME	VARCHAR2	900		An upper case version of the Name field
CREATE_USER_ID	NUMBER	22	22	Create user ID
ACCEPTACLPROPAGATION	NUMBER	22	22	Accept ACL Propagation Flag.
DELETE_FLAG	NUMBER	22	1	Identify if this is a deleted object. 1-Deleted; 0-Not Deleted
CREATE_DATE	DATE	7		Create date
UPDATE_DATE	DATE	7		Update date
DATE[01-15]_DATE	DATE	7		User defined field(s) of DATE type in PLM.
LIST[01-25]_ID	NUMBER	22	22	User defined field(s) of LIST type in PLM. Foreign Key to <configured List Dimension Table>.ENTRY_ID column. Refer to ODM_LISTDIM_CTL and ODM_DATA_DICTIONARY tables for identifying configured List Dimension table name.
MONEYCURRENCY[20-29]	NUMBER	22	4	Stores the Currency Code for the user defined field(s) of MONEY type in PLM
MONEYVALUE[20-29]	NUMBER	22	18	Stores the money value for the user defined field(s) of MONEY type in PLM
MULTILIST[01-15]	VARCHAR2	765		User defined field(s) of MULTILIST type on PLM. Stores comma seperated list of entry IDs from the configured List Dimension table. These comma seperated values are resolved and stored into ODM_<Table Name>_<Column Name>_MAP table.
NUMERIC[01-10]	NUMBER	22		User defined field(s) of NUMERIC type in PLM.
TEXT[01-25]	VARCHAR2	450		User defined field(s) of TEXT type in PLM.

ODM_CHNG_SITE_CHGORDERS

Column	Type	Size	Precision	Comments
ID	NUMBER	22	22	Unique ID
CLASS_ID	NUMBER	22	22	Class ID
SUBCLASS_ID	NUMBER	22	22	Sub class ID
CHANGE_NUMBER_ID	VARCHAR2	270		Change number
CATEGORY_ID	NUMBER	22	22	Out of the box, the value is a foreign key to ODM_CHANGE_CATEGORY_D.ENTRY_ID column
STATUS_ID	NUMBER	22	22	Status
REASON_CODE_ID	NUMBER	22	22	Out of the box, the value is a foreign key to ODM_REASONCODE_D.ENTRY_ID column
ORIGINATOR_ID	NUMBER	22	22	Out of the box, the value is a foreign key to ODM_USERS_OBJ_D.ENTRY_ID column.

Column	Type	Size	Precision	Comments
OWNER_ID	NUMBER	22	22	Out of the box, the value is a foreign key to ODM_USERS_OBJ_D.ENTRY_ID column
RESUME_DATE	DATE	7		Date stopship was resumed
EFFECTIVE_FROM_DATE	DATE	7		Effective from date
EFFECTIVE_TO_DATE	DATE	7		Effective to date
RELEASE_DATE	DATE	7		Release date of site change orders
DESCRIPTION	VARCHAR2	4000		Description of the site change orders
REASON	VARCHAR2	4000		Reason of site change orders
TRANSFERRED	VARCHAR2	384		Change transfer flags
OBJVERSION	NUMBER	22		Object version
SUBMIT_DATE	DATE	7		Submit date of site change orders
ROUTE_DATE	DATE	7		Date change was routed
PRODUCT_LINES	VARCHAR2	765		Out of the box, the value is a foreign key to ODM_PRODUCT_LINES_D.ENTRY_ID column
FLAGS	VARCHAR2	96		Reserved Field
WORKFLOW_ID	NUMBER	22	22	Workflow ID
STATUSTYPE_ID	NUMBER	22	22	Out of the box, the value is a foreign key to ODM_STATUS_TYPE_D.ENTRY_ID column
FINALCOMPLETE_DATE	DATE	7		Close date of site change orders
PROCESS_ID	NUMBER	22	22	Process ID of MFR order
IN_REVIEW	NUMBER	22		If the object is at REVIEW status type, it is 1
ENCODE_NAME	VARCHAR2	900		An upper case version of the Name field
CREATE_USER_ID	NUMBER	22	22	Create user ID
ACCEPTACLPROPAGATION	NUMBER	22	22	Accept ACL Propagation Flag.
DELETE_FLAG	NUMBER	22	1	Identify if this is a deleted object. 1-Deleted; 0-Not Deleted
CREATE_DATE	DATE	7		Create date
UPDATE_DATE	DATE	7		Update date
DATE[01-15]_DATE	DATE	7		User defined field(s) of DATE type in PLM.
LIST[01-25]_ID	NUMBER	22	22	User defined field(s) of LIST type in PLM. Foreign Key to <configured List Dimension Table>.ENTRY_ID column. Refer to ODM_LISTDIM_CTL and ODM_DATA_DICTIONARY tables for identifying configured List Dimension table name.
MONEYCURRENCY[20-29]	NUMBER	22	4	Stores the Currency Code for the user defined field(s) of MONEY type in PLM
MONEYVALUE[20-29]	NUMBER	22	18	Stores the money value for the user defined field(s) of MONEY type in PLM
MULTILIST[01-15]	VARCHAR2	765		User defined field(s) of MULTILIST type on PLM. Stores comma separated list of entry IDs from the configured List Dimension table. These comma separated values are resolved and stored into ODM_<Table Name>_<Column Name>_MAP table.
NUMERIC[01-10]	NUMBER	22		User defined field(s) of NUMERIC type in PLM.
TEXT[01-25]	VARCHAR2	450		User defined field(s) of TEXT type in PLM.

ODM_CHNG_STOP_SHIPS

Column	Type	Size	Precision	Comments
ID	NUMBER	22	22	Unique ID
CLASS_ID	NUMBER	22	22	Class ID
SUBCLASS_ID	NUMBER	22	22	Sub class ID
CHANGE_NUMBER_ID	VARCHAR2	270		Change number
FLAGS	VARCHAR2	96		Reserved Field
WORKFLOW_ID	NUMBER	22	22	Workflow ID
STATUSTYPE_ID	NUMBER	22	22	Out of the box, the value is a foreign key to ODM_STATUS_TYPE_D.ENTRY_ID column
FINALCOMPLETE_DATE	DATE	7		Close date of Stop ships
PROCESS_ID	NUMBER	22	22	Process ID of Stop ships
IN_REVIEW	NUMBER	22		If the object is at REVIEW status type, it is 1
ENCODE_NAME	VARCHAR2	900		An upper case version of the Name field
CREATE_USER_ID	NUMBER	22	22	Create user ID
ACCEPTACLPROPAGATION	NUMBER	22	22	Accept ACL Propagation Flag.
DELETE_FLAG	NUMBER	22	1	Identify if this is a deleted object. 1-Deleted; 0-Not Deleted
CATEGORY_ID	NUMBER	22	22	Out of the box, the value is a foreign key to ODM_CHANGE_CATEGORY_D.ENTRY_ID column
STATUS_ID	NUMBER	22	22	Status
REASON_CODE_ID	NUMBER	22	22	Out of the box, the value is a foreign key to ODM_REASONCODE_D.ENTRY_ID column
ORIGINATOR_ID	NUMBER	22	22	Out of the box, the value is a foreign key to ODM_USERS_OBJ_D.ENTRY_ID column.
OWNER_ID	NUMBER	22	22	Out of the box, the value is a foreign key to ODM_USERS_OBJ_D.ENTRY_ID column
RESUME_DATE	DATE	7		Date stopship was resumed
EFFECTIVE_FROM_DATE	DATE	7		Effective from date
EFFECTIVE_TO_DATE	DATE	7		Effective to date
RELEASE_DATE	DATE	7		Release date of Stop ships
DESCRIPTION	VARCHAR2	4000		Description of Stop ships
REASON	VARCHAR2	4000		Reason of Stop ships
TRANSFERRED	VARCHAR2	384		Change transfer flags
OBJVERSION	NUMBER	22		Object version
SUBMIT_DATE	DATE	7		Submit date of Stop ships
ROUTE_DATE	DATE	7		Date change was routed
PRODUCT_LINES	VARCHAR2	765		Out of the box, the value is a foreign key to ODM_PRODUCT_LINES_D.ENTRY_ID column
CREATE_DATE	DATE	7		Create date
UPDATE_DATE	DATE	7		Update date
DATE[01-15]_DATE	DATE	7		User defined field(s) of DATE type in PLM.

Column	Type	Size	Precision	Comments
LIST[01-25]_ID	NUMBER	22	22	User defined field(s) of LIST type in PLM. Foreign Key to <configured List Dimension Table>.ENTRY_ID column. Refer to ODM_LISTDIM_CTL and ODM_DATA_DICTIONARY tables for identifying configured List Dimension table name.
MONEYCURRENCY[20-29]	NUMBER	22	4	Stores the Currency Code for the user defined field(s) of MONEY type in PLM
MONEYVALUE[20-29]	NUMBER	22	18	Stores the money value for the user defined field(s) of MONEY type in PLM
MULTILIST[01-15]	VARCHAR2	765		User defined field(s) of MULTILIST type on PLM. Stores comma seperated list of entry IDs from the configured List Dimension table. These comma seperated values are resolved and stored into ODM_<Table Name>_<Column Name>_MAP table.
NUMERIC[01-10]	NUMBER	22		User defined field(s) of NUMERIC type in PLM.
TEXT[01-25]	VARCHAR2	450		User defined field(s) of TEXT type in PLM.

ODM_CLASS_METADATA

Column	Type	Size	Precision	Comments
BASE_CLASS_ID	NUMBER	22	22	Base Class ID
BASE_CLASS	VARCHAR2	600		Base Class Name
CLASS_ID	NUMBER	22	22	Class ID
CLASS	VARCHAR2	600		Class Name
SUBCLASS_ID	NUMBER	22	22	Sub-class ID
SUBCLASS	VARCHAR2	600		Sub-Class Name
COVER_TAB	VARCHAR2	100		Object tab name in PLM Application
CREATE_DATE	DATE	7		Create Date
UPDATE_DATE	DATE	7		Update Date

ODM_CONVERSION

Column	Type	Size	Precision	Comments
ID	NUMBER	22	22	Primary key
FROM_CONVERSION_CODE_ID	NUMBER	22	22	Currency type list
TO_CONVERSION_CODE_ID	NUMBER	22	22	Currency type list
CONVERSION_FACTOR	NUMBER	22	16	Rate of conversion
ORG_ID	NUMBER	22	22	Organization ID
EFFECTIVE_FROM_DATE	DATE	7		The date from which the currency rate is effective
EFFECTIVE_TO_DATE	DATE	7		The date until which the currency rate is effective
CONVERSION_TYPE_ID	NUMBER	22	22	Currency conversion method
CREATED_BY	NUMBER	22	12	The AGILEUSER.ID of the person/process that created this record.
MODIFIED_BY	NUMBER	22	12	The AGILEUSER.ID of the person/process that modified this record.
DELETE_FLAG	NUMBER	22	1	Identify if this is a deleted object. 1-Deleted; 0-Not Deleted
CREATE_DATE	DATE	7		Created on
UPDATE_DATE	DATE	7		Last updated on

ODM_CUSTOMER

Column	Type	Size	Precision	Comments
ID	NUMBER	22	22	Unique ID
CLASS_ID	NUMBER	22	22	Class ID
SUBCLASS_ID	NUMBER	22	22	Out of the box, the value is a foreign key to ODM_CUSTOMER_TYPE_OBJ_D.ENTRY_ID column
OBJVERSION	NUMBER	22		Object version number
FLAGS	VARCHAR2	32		0 (false) / 1 (true) for each position in the flag

Column	Type	Size	Precision	Comments
CUST_NO	VARCHAR2	210		Customer number
CUST_NAME	VARCHAR2	300		Customer name
ADDRESS	VARCHAR2	2046		Customer Address
CITY	VARCHAR2	256		Customer City
STATE_ID	NUMBER	22	22	Out of the box, the value is a foreign key to ODM_REGION_D.ENTRY_ID column
COUNTRY_ID	NUMBER	22	22	Out of the box, the value is a foreign key to ODM_COUNTRY_D.ENTRY_ID column
ZIP	VARCHAR2	256		Customer zip code
URL	VARCHAR2	510		Web Address
PHONE	VARCHAR2	256		Customer Phone no.
FAX	VARCHAR2	256		Fax
DESCRIPTION	VARCHAR2	500		Customer contact name
EMAIL	VARCHAR2	256		Customer email address
CONTACT	VARCHAR2	256		Customer contact no.
LIFECYCLEPHASE_ID	NUMBER	22	22	Nodetable.Id
DUNS_NUMBER	VARCHAR2	50		Customer Duns number
ENCODE_NUMBER	VARCHAR2	300		
GEOGRAPHY	NUMBER	22	10	Out of the box, the value is a foreign key to ODM_LOCATION_D.ENTRY_ID column
CREATE_USER_ID	NUMBER	22	22	Create user ID
ACCEPTACLPROPAGATION	NUMBER	22	22	Accept ACL Propagation Flag.
DELETE_FLAG	NUMBER	22	1	Identify if this is a deleted object. 1-Deleted; 0-Not Deleted
CREATE_DATE	DATE	7		Create date
UPDATE_DATE	DATE	7		Update date
DATE[01-15]_DATE	DATE	7		User defined field(s) of DATE type in PLM.
LIST[01-25]_ID	NUMBER	22	22	User defined field(s) of LIST type in PLM. Foreign Key to <configured List Dimension Table>.ENTRY_ID column. Refer to ODM_LISTDIM_CTL and ODM_DATA_DICTIONARY tables for identifying configured List Dimension table name.
MONEYCURRENCY[20-29]	NUMBER	22	4	Stores the Currency Code for the user defined field(s) of MONEY type in PLM
MONEYVALUE[20-29]	NUMBER	22	18	Stores the money value for the user defined field(s) of MONEY type in PLM
MULTILIST[01-15]	VARCHAR2	765		User defined field(s) of MULTILIST type on PLM. Stores comma seperated list of entry IDs from the configured List Dimension table. These comma seperated values are resolved and stored into ODM_<Table Name>_<Column Name>_MAP table.
NUMERIC[01-10]	NUMBER	22		User defined field(s) of NUMERIC type in PLM.
TEXT[01-25]	VARCHAR2	450		User defined field(s) of TEXT type in PLM.

ODM_DATA_DICTIONARY

Column	Type	Size	Precision	Comments
SRC_TABLE	VARCHAR2	150		Source table name
SRC_COL	VARCHAR2	150		Source table column name
TGT_TABLE	VARCHAR2	150		ODM Target table name
TGT_COL	VARCHAR2	150		ODM Target table column name
TGT_COL_TYPE	VARCHAR2	150		ODM Target table column type
TGT_COL_LEN	NUMBER	22		ODM Target table column length
PLM_DATA_TYPE	VARCHAR2	150		PLM data type of the Source column
TGT_MAP_TABLE	VARCHAR2	150		ODM Target column Map table name, this will populate only when PLM data type is MULTILIST
TGT_MAP_DIM_COL_NAME	VARCHAR2	150		ODM Target Map table column name
TGT_DIM_TABLE	VARCHAR2	150		ODM Target column Dimension table name, this will populate only when PLM data type is LIST and MULTILIST
TGT_DIM_COL_NAME	VARCHAR2	150		ODM Target Dimension table column name
CLASS_ID	NUMBER	22		Class ID

ODM_DISCUSSION

Column	Type	Size	Precision	Comments
ID	NUMBER	22	22	Unique ID
CLASS_ID	NUMBER	22	22	Class ID of the discussion
SUBCLASS_ID	NUMBER	22	22	Sub class Id of Discussion
PARENT_ID	NUMBER	22	22	parent id for the reply / 0 for discussion
ROOT_ID	NUMBER	22	22	Discussion id to which the reply belongs to. For discussion object only it is 0
MESSAGE	VARCHAR2	4000		Discussion Message
STATUS_ID	NUMBER	22	22	Status Id of the Discussion
PRIORITY_ID	NUMBER	22	22	Out of the box, the value is a foreign key to ODM_DISC_PRIORITY_LIST_D.ENTRY_ID column
AUTO_NUMBER	VARCHAR2	150		Discussion number
CLOSE_DATE	DATE	7		Date on which the Discussion was Closed
CLOSE_COMMENTS	VARCHAR2	4000		Comments captured when the Discussion was Closed
ORGANIZATION_ID	NUMBER	22	22	Organization to which the Discussion belongs. Out of the box, the value is a foreign key to ODM_ORGANIZATION_OBJ_D.ENTRY_ID column
TYPE_ID	NUMBER	22	22	Discussion Type ID
CREATOR_ID	NUMBER	22	22	Creator of the Discussion. Out of the box, the value is a foreign key to ODM_USERS_OBJ_D.ENTRY_ID column
SUBJECT	VARCHAR2	4000		Subject of the Discussion
REPLIES	NUMBER	22		Number of replies added to this row(Discussion or Reply)
NOTIFYLIST	VARCHAR2	4000		Users notified on this Discussion. Out of the box, the value is a foreign key to ODM_USERS_OBJ_D.ENTRY_ID column
LAST_REPLY_DATE	DATE	7		Date last reply was added.
FLAGS	VARCHAR2	32		0 (FALSE) / 1 (TRUE) for each position in the flag.

Column	Type	Size	Precision	Comments
PREVIEW_TEXT	NUMBER	22		Total length of the preview description
FILTER	NUMBER	22		Stores display filter values
OBJVERSION	NUMBER	22		The object version
DIS_CREATE_DATE	DATE	7		Date on which the Discussion was created
CREATE_USER_ID	NUMBER	22	22	Create user ID
ACCEPTACLPROPAGATION	NUMBER	22	22	Accept ACL Propagation Flag.
DELETE_FLAG	NUMBER	22	1	Identify if this is a deleted object. 1-Deleted; 0-Not Deleted
CREATE_DATE	DATE	7		Discussion Create Date
UPDATE_DATE	DATE	7		Last updated on
DATE[01-15]_DATE	DATE	7		User defined field(s) of DATE type in PLM.
LIST[01-25]_ID	NUMBER	22	22	User defined field(s) of LIST type in PLM. Foreign Key to <configured List Dimension Table>.ENTRY_ID column. Refer to ODM_LISTDIM_CTL and ODM_DATA_DICTIONARY tables for identifying configured List Dimension table name.
MONEYCURRENCY[20-29]	NUMBER	22	4	Stores the Currency Code for the user defined field(s) of MONEY type in PLM
MONEYVALUE[20-29]	NUMBER	22	18	Stores the money value for the user defined field(s) of MONEY type in PLM
MULTILIST[01-15]	VARCHAR2	765		User defined field(s) of MULTILIST type on PLM. Stores comma seperated list of entry IDs from the configured List Dimension table. These comma seperated values are resolved and stored into ODM_<Table Name>_<Column Name>_MAP table.
NUMERIC[01-10]	NUMBER	22		User defined field(s) of NUMERIC type in PLM.
TEXT[01-25]	VARCHAR2	450		User defined field(s) of TEXT type in PLM.

ODM_ESCALATIONS

Column	Type	Size	Precision	Comments
ID	NUMBER	22	22	Unique ID
CLASS_ID	NUMBER	22	22	The class Id of the object being escalated.
OBJECTID	NUMBER	22	22	Object Id being escalated
CRITERIA_ID	NUMBER	22	22	Id of the Workflow criteria for escalation
USER_ID	NUMBER	22	22	Agile User ID
DELETE_FLAG	NUMBER	22	1	Identify if this is a deleted object. 1-Deleted; 0-Not Deleted
CREATE_DATE	DATE	7		Created on
UPDATE_DATE	DATE	7		Last updated on

ODM_FILE_INFO

Column	Type	Size	Precision	Comments
ID	NUMBER	22	22	Unique File ID
FILE_TYPE	VARCHAR2	450		Attachment file type
CHECKSUM_VALUE	NUMBER	22		File checksum validation
FILE_PATH	VARCHAR2	4000		Defines the File Path
LOCATIONS	VARCHAR2	4000		Defines the file Directory Location.
EIFS_FILEPATH	VARCHAR2	4000		External Interface file located path
IFS_FILEPATH	VARCHAR2	4000		Installable file system path
HFS_FILEPATH	VARCHAR2	4000		Hierarchy file system path.
DELETE_FLAG	NUMBER	22	1	Identify whether this object is soft deleted 1 for delete
CREATE_DATE	DATE	7		Created on
UPDATE_DATE	DATE	7		Last updated on

ODM_FILES

Column	Type	Size	Precision	Comments
ID	NUMBER	22	22	Unique ID
FILE_SIZE	NUMBER	22		The attachment file size
FILE_TYPE	VARCHAR2	450		The attachment file type
FILENAME	VARCHAR2	4000		File Name
PAGE	NUMBER	22		Page number sequence
FLAGS	VARCHAR2	32		0 (FALSE)/1 (TRUE) for each position in the flag.
UUID	VARCHAR2	128		Schema UUID
CONTENT_URL	VARCHAR2	1024		Get File Path
FILE_FORMAT	VARCHAR2	30		Format of the file.
CONTENT_URL_TEMPLATE	VARCHAR2	3072		Universal Resource Location for the template content..
CATEGORY	NUMBER	22		The attachment File Category
DELETE_FLAG	NUMBER	22	1	Identify if this is a deleted object. 1-Deleted; 0-Not Deleted
CREATE_DATE	DATE	7		Created on
UPDATE_DATE	DATE	7		Last updated on

ODM_FLEXCOLS_METADATA

Column	Type	Size	Precision	Comments
CLASS_ID	NUMBER	22	22	Agile PLM Class ID
SUBCLASSID	NUMBER	22	22	Agile PLM Sub-class ID
FLEX_COL	VARCHAR2	50		Flex Column name.
ATTID	NUMBER	22	22	Agile PLM Attribute ID

Column	Type	Size	Precision	Comments
ATT_TYPE	VARCHAR2	50		PLM Attribute type name: TEXT, DATE, NUMERIC, MONEY, LIST, MULTI-LIST and MULTITEXT
ATT_NAME	VARCHAR2	600		Attribute name
ODM_ATT_COLNAME	VARCHAR2	600		Column name for the mapped attribute in class specific P4 table.
CREATE_DATE	DATE	7		Created Date
UPDATE_DATE	DATE	7		Updated Date

ODM_FOLDER

Column	Type	Size	Precision	Comments
ID	NUMBER	22	22	Unique ID
NAME	VARCHAR2	190		Folder displayable name
DESCRIPTION	VARCHAR2	510		Folder Description
OWNER	NUMBER	22		Folder owner ID (Agile user ID)
IS_PUBLIC	NUMBER	22		Folder Type
ORDERED	NUMBER	22		Flag for ordered folder
OBJVERSION	NUMBER	22		Object version number
DELETE_FLAG	NUMBER	22	1	Identify whether this object is soft deleted 1 for delete
CREATE_DATE	DATE	7		Created on
UPDATE_DATE	DATE	7		Last updated on

ODM_FOLDER_STRUCTURE

Column	Type	Size	Precision	Comments
ID	NUMBER	22	22	Unique ID
PID	NUMBER	22	22	Process ID
P_VER_ID	NUMBER	22	22	Version of the process
CID	NUMBER	22	22	Folder Change ID
C_VER_ID	NUMBER	22	22	Version of the Folder Change ID
FIND_NUMBER	NUMBER	22		Help No Of The Folder
QUANTITY	NUMBER	22		Quantity of the Folder
FLAGS	VARCHAR2	96		
FILENAME	VARCHAR2	4000		File name
IDENTIFIER	VARCHAR2	450		Identification of the Folder
COMPONENT	VARCHAR2	450		Components of the Folder
REFERENCE	VARCHAR2	450		Reference for the Folder
CONFIGURATION	VARCHAR2	450		Configuration of the Folder
NOTES	VARCHAR2	4000		Short Notes
DELETE_FLAG	NUMBER	22	1	Identify if this is a deleted object. 1-Deleted; 0-Not Deleted
CREATE_DATE	DATE	7		Create date

Column	Type	Size	Precision	Comments
UPDATE_DATE	DATE	7		Update date
DATE[01-10]_DATE	DATE	7		User defined field(s) of DATE type in PLM.
LIST[01-10]_ID	NUMBER	22	22	User defined field(s) of LIST type in PLM. Foreign Key to <configured List Dimension Table>.ENTRY_ID column. Refer to ODM_LISTDIM_CTL and ODM_DATA_DICTIONARY tables for identifying configured List Dimension table name.
MULTILIST[01-10]	VARCHAR2	255		User defined field(s) of MULTILIST type on PLM. Stores comma seperated list of entry IDs from the configured List Dimension table. These comma seperated values are resolved and stored into ODM_<Table Name>_<Column Name>_MAP table.
NUMERIC[01-05]	NUMBER	22		User defined field(s) of NUMERIC type in PLM.
TEXT[06-15]	VARCHAR2	150		User defined field(s) of TEXT type in PLM.

ODM_INDEX_COLUMN_CTL

Column	Type	Size	Precision	Comments
COLUMN_NAME	VARCHAR2	300		Table column name.
INDEX_NAME	VARCHAR2	100		Index name.
COLUMN_ORDER	NUMBER	22		Column order for indexing.

ODM_ITEM_DOCS

Column	Type	Size	Precision	Comments
ID	NUMBER	22	22	Unique ID Data Validation: NOT NULL -NOT 0
CLASS_ID	NUMBER	22	22	Class(10000)
SUBCLASS_ID	NUMBER	22	22	Sub class
ITEM_NUMBER	VARCHAR2	300		Item number Data Validation: NOT NULL -NO TRAILING SPACE(S) -UNIQUE ITEM NUMBER
CATEGORY_ID	NUMBER	22	22	Item category Data Validation: NULL IS OK
DESCRIPTION	VARCHAR2	720		Item Document Description
DOCSIZE	NUMBER	22	10	Out of the box, the value is a foreign key to ODM_SIZE_D.ENTRY_ID column
MODIFYDATE	DATE	7		Date item was last modified
OBJVERSION	NUMBER	22	22	Object version Number
PRODUCT_LINES	VARCHAR2	1024		Out of the box, the value is a foreign key to ODM_PRODUCT_LINES_D.ENTRY_ID column
FLAGS	VARCHAR2	32		Comma delimited list of product lines Data Validation: NULL IS OK
DEFAULT_CHANGE_ID	NUMBER	22	22	0 if it is a preliminary item or change ID of the latest released ECO/MCO for released item or latest created ECO/MCO for unreleased item
COMMODITY_ID	NUMBER	22	22	Out of the box, the value is a foreign key to ODM_PART_FAMILY_COMM_OBJ_D.ENTRY_ID column
ENCODE_NAME	VARCHAR2	300		Upper case value of item_number
PART_FAMILY_ID	NUMBER	22	22	Out of the box, the value is a foreign key to ODM_PART_FAMILY_OBJ_D.ENTRY_ID column

Column	Type	Size	Precision	Comments
CONV_FACTOR_ID	NUMBER	22	16	Conversion Method
IS_TLA_ID	NUMBER	22	22	ID of an item if it is having top level assembly.
EXCLUDE_FROM_ROLLUP_ID	NUMBER	22	22	Internal used
CREATE_USER_ID	NUMBER	22	22	Create user ID
ACCEPTACLPROPAGATION	NUMBER	22	22	Accept ACL Propagation Flag.
DELETE_FLAG	NUMBER	22	1	Identify if this is a deleted object. 1-Deleted; 0-Not Deleted
CREATE_DATE	DATE	7		Created on
UPDATE_DATE	DATE	7		Last updated on
DATE[01-15]_DATE	DATE	7		User defined field(s) of DATE type in PLM.
LIST[01-25]_ID	NUMBER	22	22	User defined field(s) of LIST type in PLM. Foreign Key to <configured List Dimension Table>.ENTRY_ID column. Refer to ODM_LISTDIM_CTL and ODM_DATA_DICTIONARY tables for identifying configured List Dimension table name.
MONEYCURRENCY[20-29]	NUMBER	22	4	Stores the Currency Code for the user defined field(s) of MONEY type in PLM
MONEYVALUE[20-29]	NUMBER	22	18	Stores the money value for the user defined field(s) of MONEY type in PLM
MULTILIST[01-15]	VARCHAR2	765		User defined field(s) of MULTILIST type on PLM. Stores comma seperated list of entry IDs from the configured List Dimension table. These comma seperated values are resolved and stored into ODM_<Table Name>_<Column Name>_MAP table.
NUMERIC[01-10]	NUMBER	22		User defined field(s) of NUMERIC type in PLM.
TEXT[01-25]	VARCHAR2	450		User defined field(s) of TEXT type in PLM.

ODM_ITEM_HISTORY

Column	Type	Size	Precision	Comments
ID	NUMBER	22	22	Unique ID
CLASS_ID	NUMBER	22	22	Class ID
ITEM_ID	NUMBER	22	22	Item ID
REVNUMBER	VARCHAR2	128		Revision Number
USER_ID	NUMBER	22		ID of user who took the action
TIMESTAMP	DATE	7		Server date action was taken
ACTION_ID	NUMBER	22	22	Type of action
DETAILS	CLOB	4000		Details about the action
COMMENTS	VARCHAR2	4000		User Comments
LOCAL_DATE	DATE	7		Local client date
TIMEZONE_ID	NUMBER	22	22	Timezone of the local client date
SITE_ID	NUMBER	22	22	Site ID for the Site specific Item history
USER_NAME	VARCHAR2	520		User name
DELETE_FLAG	NUMBER	22	1	Identify if this is a deleted object. 1-Deleted; 0-Not Deleted

Column	Type	Size	Precision	Comments
CREATE_DATE	DATE	7		Created on
UPDATE_DATE	DATE	7		Last updated on

ODM_ITEM_PARTS

Column	Type	Size	Precision	Comments
ID	NUMBER	22	22	Unique ID Data Validation: NOT NULL -NOT 0
CLASS_ID	NUMBER	22	22	Class(9000)
SUBCLASS_ID	NUMBER	22	22	Sub class
ITEM_NUMBER	VARCHAR2	300		Item number Data Validation: NOT NULL -NO TRAILING SPACE(S) -UNIQUE ITEM NUMBER
CATEGORY_ID	NUMBER	22	22	Item category Data Validation: NULL IS OK
DESCRIPTION	VARCHAR2	720		Item Part Description
DOCSIZE	NUMBER	22	10	Out of the box, the value is a foreign key to ODM_SIZE_D.ENTRY_ID column
MODIFYDATE	DATE	7		Date item was last modified
OBJVERSION	NUMBER	22		Object version Number
PRODUCT_LINES	VARCHAR2	1024		Out of the box, the value is a foreign key to ODM_PRODUCT_LINES_D.ENTRY_ID column
FLAGS	VARCHAR2	32		Comma delimited list of product lines Data Validation: NULL IS OK
DEFAULT_CHANGE_ID	NUMBER	22	22	0 if it is a preliminary item or change ID of the latest released ECO/MCO for released item or latest created ECO/MCO for unreleased item
COMMODITY_ID	NUMBER	22	22	Out of the box, the value is a foreign key to ODM_PART_FAMILY_COMM_OBJ_D.ENTRY_ID column
ENCODE_NAME	VARCHAR2	300		Upper case value of item_number
PART_FAMILY_ID	NUMBER	22	22	Out of the box, the value is a foreign key to ODM_PART_FAMILY_OBJ_D.ENTRY_ID column
CONV_FACTOR_ID	NUMBER	22	16	Conversion Method
IS_TLA_ID	NUMBER	22	22	ID of an item if it is having top level assembly.
EXCLUDE_FROM_ROLLUP_ID	NUMBER	22	22	Internal used
CREATE_USER_ID	NUMBER	22	22	Create user ID
ACCEPTACLPROPAGATION	NUMBER	22	22	Accept ACL Propagation Flag.
DELETE_FLAG	NUMBER	22	1	Identify if this is a deleted object. 1-Deleted; 0-Not Deleted
CREATE_DATE	DATE	7		Created on
UPDATE_DATE	DATE	7		Last updated on
DATE[01-15]_DATE	DATE	7		User defined field(s) of DATE type in PLM.
LIST[01-25]_ID	NUMBER	22	22	User defined field(s) of LIST type in PLM. Foreign Key to <configured List Dimension Table>.ENTRY_ID column. Refer to ODM_LISTDIM_CTL and ODM_DATA_DICTIONARY tables for identifying configured List Dimension table name.
MONEYCURRENCY[20-29]	NUMBER	22	4	Stores the Currency Code for the user defined field(s) of MONEY type in PLM

Column	Type	Size	Precision	Comments
MONEYVALUE[20-29]	NUMBER	22	18	Stores the money value for the user defined field(s) of MONEY type in PLM
MULTILIST[01-15]	VARCHAR2	765		User defined field(s) of MULTILIST type on PLM. Stores comma separated list of entry IDs from the configured List Dimension table. These comma separated values are resolved and stored into ODM_<Table Name>_<Column Name>_MAP table.
NUMERIC[01-10]	NUMBER	22		User defined field(s) of NUMERIC type in PLM.
TEXT[01-25]	VARCHAR2	450		User defined field(s) of TEXT type in PLM.

ODM_ITEM_SITES

Column	Type	Size	Precision	Comments
ID	NUMBER	22	22	Unique ID
ITEM_ID	NUMBER	22	22	Item ID
SITE_ID	NUMBER	22	22	Site ID
BUYER_ID	NUMBER	22	22	Buyer
PLANNER_ID	NUMBER	22	22	Planner
MAKE_BUY_ID	NUMBER	22	22	1 for make, 2 for buy
COST_ID	NUMBER	22	22	
QUOTE_AS_ID	NUMBER	22	22	
CURRENCY_ID	NUMBER	22	22	Currency Code
STANDARD_COST	NUMBER	22	18	Standard cost
STANDARD_COST_CURRENCY	NUMBER	22	4	Standard cost currency code
TARGET_COST	NUMBER	22	18	Target cost
TARGET_COST_CURRENCY	NUMBER	22	4	Target cost currency code
FIRST_RELEASED_CHANGE_ID	NUMBER	22	22	The Change ID That First Release The Item On Specific Site.
DELETE_FLAG	NUMBER	22	1	Identify if this is a deleted object. 1-Deleted; 0-Not Deleted
CREATE_DATE	DATE	7		Create date
UPDATE_DATE	DATE	7		Update date
DATE[01-05]_DATE	DATE	7		User defined field(s) of DATE type in PLM.
LIST[01-35]_ID	NUMBER	22	22	User defined field(s) of LIST type in PLM. Foreign Key to <configured List Dimension Table>.ENTRY_ID column. Refer to ODM_LISTDIM_CTL and ODM_DATA_DICTIONARY tables for identifying configured List Dimension table name.
MONEYCURRENCY[21-30]	NUMBER	22	4	Stores the Currency Code for the user defined field(s) of MONEY type in PLM
MONEYVALUE[01-10]	NUMBER	22	18	Stores the money value for the user defined field(s) of MONEY type in PLM
MULTILIST[01-20]	VARCHAR2	255		User defined field(s) of MULTILIST type on PLM. Stores comma separated list of entry IDs from the configured List Dimension table. These comma separated values are resolved and stored into ODM_<Table Name>_<Column Name>_MAP table.
NUMERIC[01-35]	NUMBER	22		User defined field(s) of NUMERIC type in PLM.

Column	Type	Size	Precision	Comments
TEXT[01-35]	VARCHAR2	150		User defined field(s) of TEXT type in PLM.

ODM_LANGTABLE

Column	Type	Size	Precision	Comments
LANG_ID	NUMBER	22		Language ID # 0 English # 1 Japanese # 2 Traditional Chinese # 3 French # 4 Simplified Chinese # 5 German
TYPE_ID	NUMBER	22		Class ID
ID	NUMBER	22		Attribute ID
VALUE	VARCHAR2	4000		Stored Content of the Attribute
DELETE_FLAG	NUMBER	22		Identify if this is a deleted object. 1-Deleted; 0-Not Deleted
CREATE_DATE	DATE	7		Created Date
UPDATE_DATE	DATE	7		Updated Date

ODM_LISTDIM_CTL

Column	Type	Size	Precision	Comments
LIST_ID	NUMBER	22		List ID of the Agile PLM List.
LIST_NAME	VARCHAR2	1530		List Name for Agile PLM List
LIST_DIM	VARCHAR2	1530		Configurable List Dimension Name in target Data Mart schema for the Agile PLM list
IND_FLAG	NUMBER	22		List type for configuration purposes and values: 1 - normal list; 2 - cascade list; 3 - dynamic list
MODIFIED	DATE	7		Last modified date

ODM_LISTDIM_CTL_BKP

Column	Type	Size	Precision	Comments
LIST_ID	NUMBER	22		List ID of the Agile PLM List.
LIST_NAME	VARCHAR2	1530		List Name for Agile PLM List
LIST_DIM	VARCHAR2	1530		Configurable List Dimension Name in target Data Mart schema for the Agile PLM list
IND_FLAG	NUMBER	22		List type for configuration purposes and values: 1 - normal list; 2 - cascade list; 3 - dynamic list
CREATED	DATE	7		Created On

ODM_MANU_BY

Column	Type	Size	Precision	Comments
ID	NUMBER	22	22	Unique ID
MANUPART_ID	NUMBER	22	22	Manufacturer part ID
AGILE_PART_ID	NUMBER	22	22	Agile part ID

Column	Type	Size	Precision	Comments
PREFER_STATUS_ID	NUMBER	22	22	Preference status of the Manufacturer Part
CHANGE_IN	NUMBER	22		Change ID bringing in the Manufacturer Part
CHANGE_OUT	NUMBER	22		Change ID bringing in the Manufacturer Part
PRIOR_ROW	NUMBER	22		ID of line item to be replaced
ACTIVE	NUMBER	22		If it is 1, the current row will be used for the search
SITE_ID	NUMBER	22	22	Site ID
AML_SPLIT_ID	NUMBER	22	22	AML split for the Manufacturer Part
DELETE_FLAG	NUMBER	22	1	Identify if this is a deleted object. 1-Deleted; 0-Not Deleted
CREATE_DATE	DATE	7		Created on
UPDATE_DATE	DATE	7		Last updated on
DATE[01-05]_DATE	DATE	7		User defined field(s) of DATE type in PLM.
LIST[01-25]_ID	NUMBER	22	22	User defined field(s) of LIST type in PLM. Foreign Key to <configured List Dimension Table>.ENTRY_ID column. Refer to ODM_LISTDIM_CTL and ODM_DATA_DICTIONARY tables for identifying configured List Dimension table name.
MULTILIST[01-03]	VARCHAR2	255		User defined field(s) of MULTILIST type on PLM. Stores comma separated list of entry IDs from the configured List Dimension table. These comma separated values are resolved and stored into ODM_<Table Name>_<Column Name>_MAP table.
NUMERIC[01-05]	NUMBER	22		User defined field(s) of NUMERIC type in PLM.
TEXT[01-05]	VARCHAR2	150		User defined field(s) of TEXT type in PLM.

ODM_MANU_PARTS

Column	Type	Size	Precision	Comments
ID	NUMBER	22	22	Unique ID
CLASS_ID	NUMBER	22	22	Class ID
SUBCLASS_ID	NUMBER	22	22	Out of the box, the value is a foreign key to ODM_MANU_PARTS_TYPE_OBJ_D.ENTRY_ID column
OBJVERSION	NUMBER	22		Object Version
MANU_ID	NUMBER	22	22	Manufacturer ID
PART_NUMBER_ID	VARCHAR2	300		Manufacturer Part Number
STATUS_ID	NUMBER	22	22	Status
FLAGS	VARCHAR2	32		Internal flag.0 (FALSE)/1 (TRUE) for each position in the flag
DESCRIPTION	VARCHAR2	720		Manufacturer Part Description
ENCODE_NAME	VARCHAR2	300		An upper case version of the Name field
PART_FAMILY_ID	NUMBER	22	22	Out of the box, the value is a foreign key to ODM_PART_FAMILY_OBJ_D.ENTRY_ID column
CONV_FACTOR_ID	NUMBER	22	22	Conversion Method
WEIGHT	NUMBER	22		Weight
WEIGHT_UOM	NUMBER	22	10	Unit of Measure

Column	Type	Size	Precision	Comments
NORMALIZED_WEIGHT	NUMBER	22		Normalized Weight
COMPLIANCY_ID	NUMBER	22	22	Out of the box, the value is a foreign key to ODM_CALC_COMPLIANCE_D.ENTRY_ID column
COMPLIANCY_CALC_DATE	DATE	7		Last date of Compliance calculation
CREATE_USER_ID	NUMBER	22	22	Create user ID
ACCEPTACLPROPAGATION	NUMBER	22	22	Accept ACL Propagation Flag.
DELETE_FLAG	NUMBER	22	1	Identify if this is a deleted object. 1-Deleted; 0-Not Deleted
CREATE_DATE	DATE	7		Created on
UPDATE_DATE	DATE	7		Last updated on
DATE[01-15]_DATE	DATE	7		User defined field(s) of DATE type in PLM.
LIST[01-25]_ID	NUMBER	22	22	User defined field(s) of LIST type in PLM. Foreign Key to <configured List Dimension Table>.ENTRY_ID column. Refer to ODM_LISTDIM_CTL and ODM_DATA_DICTIONARY tables for identifying configured List Dimension table name.
MONEYCURRENCY[20-29]	NUMBER	22	4	Stores the Currency Code for the user defined field(s) of MONEY type in PLM
MONEYVALUE[20-29]	NUMBER	22	18	Stores the money value for the user defined field(s) of MONEY type in PLM
MULTILIST[01-15]	VARCHAR2	765		User defined field(s) of MULTILIST type on PLM. Stores comma separated list of entry IDs from the configured List Dimension table. These comma separated values are resolved and stored into ODM_<Table Name>_<Column Name>_MAP table.

ODM_MANUFACTURERS

Column	Type	Size	Precision	Comments
ID	NUMBER	22	22	Unique ID
CLASS_ID	NUMBER	22	22	Class ID
SUBCLASS_ID	NUMBER	22	22	Out of the box, the value is a foreign key to ODM_MANUFACTURERS_TYPE_OBJ_D.ENTRY_ID column
OBJVERSION	NUMBER	22		Object Version
ADDRESS	VARCHAR2	2046		Address
CITY	VARCHAR2	256		City
CONTACT	VARCHAR2	256		Contact
COUNTRY_ID	NUMBER	22	22	Out of the box, the value is a foreign key to ODM_COUNTRY_D.ENTRY_ID column
EMAIL	VARCHAR2	256		Email for Web Access
FAX	VARCHAR2	256		Fax
NAME	VARCHAR2	300		Manufacturer Name
PHONE	VARCHAR2	256		Phone
ZIP	VARCHAR2	256		Local Zip code
STATE_ID	NUMBER	22	22	Out of the box, the value is a foreign key to ODM_REGION_D.ENTRY_ID column

Column	Type	Size	Precision	Comments
STATUS_ID	NUMBER	22	22	Status
URL	VARCHAR2	510		Web mail Address
FLAGS	VARCHAR2	32		Internal Used(0 false , 1 True)
DUNS_NUMBER	VARCHAR2	50		Manufacturer Duns number
ENCODE_NAME	VARCHAR2	300		An upper case version of the Name field
GEOGRAPHY_ID	NUMBER	22	22	Out of the box, the value is a foreign key to ODM_LOCATION_D.ENTRY_ID column
CREATE_USER_ID	NUMBER	22	22	Create user ID
ACCEPTACLPROPAGATION	NUMBER	22	22	Accept ACL Propagation Flag.
DELETE_FLAG	NUMBER	22	1	Identify if this is a deleted object. 1-Deleted; 0-Not Deleted
CREATE_DATE	DATE	7		Created on
UPDATE_DATE	DATE	7		Last updated on
DATE[01-15]_DATE	DATE	7		User defined field(s) of DATE type in PLM.
LIST[01-25]_ID	NUMBER	22	22	User defined field(s) of LIST type in PLM. Foreign Key to <configured List Dimension Table>.ENTRY_ID column. Refer to ODM_LISTDIM_CTL and ODM_DATA_DICTIONARY tables for identifying configured List Dimension table name.
MONEYCURRENCY[20-29]	NUMBER	22	4	Stores the Currency Code for the user defined field(s) of MONEY type in PLM
MONEYVALUE[20-29]	NUMBER	22	18	Stores the money value for the user defined field(s) of MONEY type in PLM
MULTILIST[01-15]	VARCHAR2	765		User defined field(s) of MULTILIST type on PLM. Stores comma seperated list of entry IDs from the configured List Dimension table. These comma seperated values are resolved and stored into ODM_<Table Name>_<Column Name>_MAP table.
NUMERIC[01-10]	NUMBER	22		User defined field(s) of NUMERIC type in PLM.
TEXT[01-25]	VARCHAR2	450		User defined field(s) of TEXT type in PLM.

ODM_MASTER_INDEX_CTL

Column	Type	Size	Precision	Comments
TABLE_NAME	VARCHAR2	30		Table name for which the index is added.
INDEX_ID	NUMBER	22	22	ID of Index
INDEX_NAME	VARCHAR2	100		Name of Index.
TYPE_INDEX	VARCHAR2	100		Type of index added.
TABLESPACE_NAME	VARCHAR2	500		Tablespace name on which index is added.
CREATE_DATE	DATE	7		Created Date.
LAST_ANALYZE	DATE	7		Last analyzed date.
STATUS_ENABLE	NUMBER	22		Index enabled or not. Any index that is not enabled shall be created and dropped during ETL process.
ORDER_TYPE	VARCHAR2	50		Order of Index.

ODM_NEWS

Column	Type	Size	Precision	Comments
ID	NUMBER	22	22	News Unique ID
ACTIVITY_ID	NUMBER	22	22	Activity or Gates ID
TITLE	VARCHAR2	150		News Title
NEWS	VARCHAR2	4000		News Description
TYPE_ID	NUMBER	22	22	News Type Data
OWNER_ID	NUMBER	22	22	Create User ID
DELETE_FLAG	NUMBER	22	1	Identify if this is a deleted object. 1-Deleted; 0-Not Deleted
CREATE_DATE	DATE	7		Create Date
UPDATE_DATE	DATE	7		Update Date

ODM_NOTIFICATION

Column	Type	Size	Precision	Comments
ID	NUMBER	22	22	Notification primary key Data Validation: NOT NULL
SENDER_ID	NUMBER	22	22	User Id of the Notification sender
OBJECT_ID	NUMBER	22	22	Id of the object referred in the notification
NOTI_FROM	VARCHAR2	384		Sender Email Address
NOTI_TYPE	NUMBER	22		Notification template ID
DATE_CREATED	DATE	7		Notification create date
DATE_MODIFIED	DATE	7		Notification modified date
CREATED_BY	NUMBER	22	12	Notification created by
MODIFIED_BY	NUMBER	22	12	Notification modified by
OBJECT_CLASS	NUMBER	22		Class of the object referred to in the notification
REQUEST_TYPE	NUMBER	22		Is Request Type, 0-- No; 1--Yes
COUNT	NUMBER	22	38	Number of Users referencing this notification
NOTI_OBJECT_VERSION	NUMBER	22		Version of notification template
DELETE_FLAG	NUMBER	22	1	Identify if this is a deleted object. 1-Deleted; 0-Not Deleted
CREATE_DATE	DATE	7		Created on

ODM_ORGANIZATION

Column	Type	Size	Precision	Comments
ID	NUMBER	22	22	Out of the box, the value is a foreign key to ODM_SUPPLIERS_OBJ_D.ENTRY_ID column
CLASS_ID	NUMBER	22	22	Organization Class ID
SUBCLASS_ID	NUMBER	22	22	Organization sub-class ID

Column	Type	Size	Precision	Comments
CREATED_BY	NUMBER	22	12	The AGILEUSER.ID of the person/process that created this record.
MODIFIED_BY	NUMBER	22	12	The AGILEUSER.ID of the person/process that last modified this record.
OBJVERSION	NUMBER	22		The object version is a number that starts at 1 when the record is created, and gets incremented by 1 each time the record is changed.
POWER_LICENSES	NUMBER	22		Number of power licenses
CASUAL_LICENSES	NUMBER	22		Number of casual licenses
PARTNER_LICENSES	NUMBER	22		Number of partner licenses
ORG_NUMBER	VARCHAR2	200		The ORGs NUMBER IN the SYSTEM
ATTACHMENT_FLAG	NUMBER	22	1	Has attachmetns
ENCODE_NUMBER	VARCHAR2	384		Upper case value of ORG_NUMBER
GEOGRAPHY_ID	NUMBER	22	22	Out of the box, the value is a foreign key to ODM_LOCATION_D.ENTRY_ID column
FLAGS	VARCHAR2	96		Reserved Field
CREATE_USER_ID	NUMBER	22	22	Create user ID
ACCEPTACLPROPAGATION	NUMBER	22	22	Accept ACL Propagation Flag.
DEFAULT_RFQ_RECEIVER_ID	NUMBER	22	22	The default RFQ receiver (user) for the org (Supplier only)
CURRENCY_CODE_ID	NUMBER	22	4	Organization's preferred currency.
CURRENCIES	VARCHAR2	4000		Organization's supported currencies. Stored as a token separated list of currency codes.
NAME	VARCHAR2	384		Organization's official name.
SHORT_NAME	VARCHAR2	384		Organization's short name.Cannot be null.
TYPE_ID	NUMBER	22	22	Organization type. Must be one of the pre-defined types in the org type enumeration.
SUPPLIER_TYPE_ID	NUMBER	22	22	Supplier Organization type. of the pre-defined types in the supplier type enumeration.
STATUS_ID	NUMBER	22	22	Status of the Organization.2 is Active, 3 is Suspended.
MAX_USERS	NUMBER	22	12	Maximum number of users that the organization administrator can create.
WEB_FLAG	NUMBER	22	2	Boolean flag indicating whether or not the organization is web-enabled.
PWD_EXPIRES_FLAG	NUMBER	22	2	Yes or No Flag
PWD_EXPIRES_AFTER	NUMBER	22	10	Number of Days the password expires after
PWD_ALLOW_BLANK	NUMBER	22	2	Blank password setting for the organization (boolean)
PWD_MIN_CHARS	NUMBER	22	10	Minimum number of characters for password (org setting)
PWD_NUMERIC_FLAG	NUMBER	22	2	Password numeric required flag (Org setting)
PWD_KEEP_HISTORY_FLAG	NUMBER	22	2	Keep password history (boolean org-level setting)
PWD_REMEMBER_LAST	NUMBER	22	10	Number of passwords to remember
MAX_LOGIN_ATTEMPTS	NUMBER	22	10	Maximum number of login attempts allowed
POSTAL_CODE	VARCHAR2	60		Zip or Postal Code
ADDRESS	VARCHAR2	2160		Address
CITY	VARCHAR2	384		City
REGION	NUMBER	22	10	Out of the box, the value is a foreign key to ODM_REGION_D.ENTRY_ID column

Column	Type	Size	Precision	Comments
COUNTRY	NUMBER	22	10	Out of the box, the value is a foreign key to ODM_COUNTRY_D.ENTRY_ID column
PHONE	VARCHAR2	300		Phone
FAX	VARCHAR2	300		Fax
URL	VARCHAR2	720		URL (Web Address)
PRODUCTS_SERVICES_OFFERED	VARCHAR2	2160		Reserved Field
SUPPLIER_ID	VARCHAR2	384		Out of the box, the value is a foreign key to ODM_ORGANIZATION_TYPE_OBJ_D.ENTRY_ID column
MAX_SUPER_SUPPLIER_USERS	NUMBER	22	12	Maximum Number of Supplier Users permitted
DELETE_FLAG	NUMBER	22	1	Identify if this is a deleted object. 1-Deleted; 0-Not Deleted
CREATE_DATE	DATE	7		Created on
UPDATE_DATE	DATE	7		Last updated on
ORG_TEXT[1-10]	VARCHAR2	720		User defined field for extending the org record.
ORG_DATE[1-5]_DATE	DATE	7		User defined date field to extend the organization object
ORG_LIST[1-5]_ID	NUMBER	22	22	Foreign Key to <configured List Dimension Table>.ENTRY_ID column. Refer to ODM_LISTDIM_CTL and ODM_DATA_DICTIONARY tables for identifying configured List Dimension table name.
CURRENCY[1-5]_ID	NUMBER	22	4	User defined Currency field to extend the organization object
DATE[01-15]_DATE	DATE	7		User defined field(s) of DATE type in PLM.
LIST[01-25]_ID	NUMBER	22	22	User defined field(s) of LIST type in PLM. Foreign Key to <configured List Dimension Table>.ENTRY_ID column. Refer to ODM_LISTDIM_CTL and ODM_DATA_DICTIONARY tables for identifying configured List Dimension table name.
MONEYCURRENCY[20-29]	NUMBER	22	4	Stores the Currency Code for the user defined field(s) of MONEY type in PLM
MONEYVALUE[20-29]	NUMBER	22	18	Stores the money value for the user defined field(s) of MONEY type in PLM
MULTILIST[01-15]	VARCHAR2	765		User defined field(s) of MULTILIST type on PLM. Stores comma separated list of entry IDs from the configured List Dimension table. These comma separated values are resolved and stored into ODM_<Table Name>_<Column Name>_MAP table.
NUMERIC[01-10]	NUMBER	22		User defined field(s) of NUMERIC type in PLM.
TEXT[01-25]	VARCHAR2	450		User defined field(s) of TEXT type in PLM.

ODM_PAGE_THREE

Column	Type	Size	Precision	Comments
ID	NUMBER	22	22	Object ID
CLASS_ID	NUMBER	22	22	Class Id of the Object
DELETE_FLAG	NUMBER	22	1	Identify if this is a deleted object. 1-Deleted; 0-Not Deleted
CREATE_DATE	DATE	7		Created on

Column	Type	Size	Precision	Comments
UPDATE_DATE	DATE	7		Last updated on
DATE[31-45]_DATE	DATE	7		User defined field(s) of DATE type in PLM.
LIST[31-55]_ID	NUMBER	22	22	User defined field(s) of LIST type in PLM. Foreign Key to <configured List Dimension Table>.ENTRY_ID column. Refer to ODM_LISTDIM_CTL and ODM_DATA_DICTIONARY tables for identifying configured List Dimension table name.
MONEYCURRENCY[30-39]	NUMBER	22	4	Stores the Currency Code for the user defined field(s) of MONEY type in PLM
MONEYVALUE[30-39]	NUMBER	22	18	Stores the money value for the user defined field(s) of MONEY type in PLM
MULTILIST[31-33]	VARCHAR2	255		User defined field(s) of MULTILIST type on PLM. Stores comma separated list of entry IDs from the configured List Dimension table. These comma separated values are resolved and stored into ODM_<Table Name>_<Column Name>_MAP table.
NUMERIC[31-40]	NUMBER	22		User defined field(s) of NUMERIC type in PLM.
TEXT[31-55]	VARCHAR2	150		User defined field(s) of TEXT type in PLM.

ODM_PART_FAMILY

Column	Type	Size	Precision	Comments
ID	NUMBER	22	22	Part family ID
CLASS_ID	NUMBER	22	22	Part family class ID
SUBCLASS_ID	NUMBER	22	22	Out of the box, the value is a foreign key to ODM_PART_FAMILY_TYPE_OBJ_D.ENTRY_ID column
NAME	VARCHAR2	300		Part family Name
DESCRIPTION	VARCHAR2	720		Description
OBJVERSION	NUMBER	22		Object Version
WEIGHT	NUMBER	22		Weight
WEIGHT_UOM	NUMBER	22	10	Unit of Measure
NORMALIZED_WEIGHT	NUMBER	22		Normalized Weight
STATUS_ID	NUMBER	22	22	Status ID
FLAGS	VARCHAR2	32		Reserved Field
OBJECT_TYPE_ID	NUMBER	22	22	Out of the box, the value is a foreign key to ODM_COMMODITY_TYPE_D.ENTRY_ID column
ORG_ID	NUMBER	22	22	Organization ID
ENCODE_NAME	VARCHAR2	300		An upper case version of the Name field
COMPLIANCY_ID	NUMBER	22	22	Out of the box, the value is a foreign key to ODM_CALC_COMPLIANCE_D.ENTRY_ID column
COMPLIANCY_CALC_DATE	DATE	7		The date when Compliancy has been calculated.
CREATE_USER_ID	NUMBER	22	22	
ACCEPTACLPROPAGATION	NUMBER	22	22	
DELETE_FLAG	NUMBER	22	1	Identify if this is a deleted object. 1-Deleted; 0-Not Deleted
CREATE_DATE	DATE	7		Create date
UPDATE_DATE	DATE	7		Update date

Column	Type	Size	Precision	Comments
DATE[01-15]_DATE	DATE	7		User defined field(s) of DATE type in PLM.
LIST[01-25]_ID	NUMBER	22	22	User defined field(s) of LIST type in PLM. Foreign Key to <configured List Dimension Table>.ENTRY_ID column. Refer to ODM_LISTDIM_CTL and ODM_DATA_DICTIONARY tables for identifying configured List Dimension table name.
MONEYCURRENCY[20-29]	NUMBER	22	4	Stores the Currency Code for the user defined field(s) of MONEY type in PLM
MONEYVALUE[20-29]	NUMBER	22	18	Stores the money value for the user defined field(s) of MONEY type in PLM
MULTILIST[01-15]	VARCHAR2	765		User defined field(s) of MULTILIST type on PLM. Stores comma separated list of entry IDs from the configured List Dimension table. These comma separated values are resolved and stored into ODM_<Table Name>_<Column Name>_MAP table.
NUMERIC[01-10]	NUMBER	22		User defined field(s) of NUMERIC type in PLM.
TEXT[01-25]	VARCHAR2	450		User defined field(s) of TEXT type in PLM.

ODM_PART_FAMILY_MAP

Column	Type	Size	Precision	Comments
ID	NUMBER	22	22	Unique Identifier
CLASS_ID	NUMBER	22	22	Class ID
OBJ_ID	NUMBER	22	22	Object ID
PART_FAMILY_ID	NUMBER	22	22	Part family Fk
CONV_FACTOR_ID	NUMBER	22	16	Conversion Method
PART_NUMBER	VARCHAR2	300		Part Number
MFR_NAME	VARCHAR2	300		Manufacturer Number
PART_DESC	VARCHAR2	700		Description
DELETE_FLAG	NUMBER	22	1	Identify if this is a deleted object. 1-Deleted; 0-Not Deleted
CREATE_DATE	DATE	7		Create date
UPDATE_DATE	DATE	7		Update date
DATE[01-05]_DATE	DATE	7		User defined field of DATE type in PLM.
LIST[01-25]_ID	NUMBER	22	22	User defined field(s) of LIST type in PLM. Foreign Key to <configured List Dimension Table>.ENTRY_ID column. Refer to ODM_LISTDIM_CTL and ODM_DATA_DICTIONARY tables for identifying configured List Dimension table name.
NUMERIC[01-05]	NUMBER	22		User defined field(s) of NUMERIC type in PLM.
TEXT[01-05]	VARCHAR2	150		User defined field(s) of TEXT type in PLM.

ODM_PRG_ACTIVITY

Column	Type	Size	Precision	Comments
--------	------	------	-----------	----------

Column	Type	Size	Precision	Comments
ID	NUMBER	22	22	Unique ID
CLASS_ID	NUMBER	22	22	Class ID
SUBCLASS_ID	NUMBER	22	22	Subclass ID
NAME	VARCHAR2	800		Name of the Activity
ACTIVITY_NUMBER_ID	VARCHAR2	150		Sequence no of the Activity
STATUS_ID	NUMBER	22	22	Status of the Activity
STATUSTYPE_ID	NUMBER	22	22	Out of the box, the value is a foreign key to ODM_STATUS_TYPE_D.ENTRY_ID column
OWNER_ID	NUMBER	22	22	Out of the box, the value is a foreign key to ODM_USERS_OBJ_D.ENTRY_ID column
ACT_FINISH_VAR_CD_ID	NUMBER	22	22	Actual finish variance calendar days
ACT_DUR_VAR_CD_ID	NUMBER	22	22	Actual duration Variance calendar days
UI_BLOB_DATA_ID	NUMBER	22	12	Image used in Summary page
CREATE_USER_ID	NUMBER	22	22	Create user ID
ACCEPTACLPROPAGATION	NUMBER	22	22	Accept ACL Propagation Flag.
ACT_CREATE_DATE	DATE	7		Actual Create Date
CREATED_FROM_TEMPLATE	NUMBER	22		Template information from where it is created
DESCRIPTION	VARCHAR2	4000		Description of the Activity
DELEGATED_OWNER_ID	NUMBER	22	22	Out of the box, the value is a foreign key to ODM_USERS_OBJ_D.ENTRY_ID column
PARENT_ID	NUMBER	22	22	Parent ID of the Activity
ROOT_ID	NUMBER	22	22	Root ID of the Activity
SCH_START_DATE	DATE	7		Scheduled date of the Activity
SCH_END_DATE	DATE	7		Scheduled End date of the Activity
ACT_START_DATE	DATE	7		Actual date of the Activity
ACT_END_DATE	DATE	7		Actual End date of the Activity
WORKFLOW_ID	NUMBER	22	22	Workflow ID of the Activity
PERCENT_COMPLETE_ID	NUMBER	22	22	Percentage Complete
RESOURCE_TYPE_ID	NUMBER	22	22	Resource type ID
TEMPLATE_ID	NUMBER	22	22	Out of the box, the value is a foreign key to ODM_ACTIVITY_STATE_D.ENTRY_ID column
AUDIT_SCORE_ID	NUMBER	22	22	Audit score value of activity
WEIGHT_ID	NUMBER	22	22	Activity Weight
HEALTH_ID	NUMBER	22	22	Activity Schedule status
LOCK_STATUS_ID	NUMBER	22	22	If Lock_User > 0 then 1 ; If Lock_User <= 0 then 0
LOCK_USER	NUMBER	22		Out of the box, the value is a foreign key to ODM_USERS_OBJ_D.ENTRY_ID column
VARIANCE	NUMBER	22		Not Used
OBJVERSION	NUMBER	22		Object Version
DISPLAY_ORDER	NUMBER	22		Display Order In Parent'S Schedule
PROCESS_ID	NUMBER	22	22	Not Used
FLAGS	VARCHAR2	32		0 (FALSE) / 1 (TRUE) for each position in the flag.
SUMMARY_PAGE	NUMBER	22		Not Used
ARCHIVED_ID	NUMBER	22	22	Archive Status Of Activity 0 (False) / 1 (True)

Column	Type	Size	Precision	Comments
ROLLUP_HEALTH_STATUS	NUMBER	22		Rollup Health Status
ROUTE_DATE	DATE	7		Route date of the Activity
FINALCOMPLETE_DATE	DATE	7		Close date
DURATION_TYPE	NUMBER	22		Duration Type of Activity.
DAYS_EFFORT	NUMBER	22		Days Effort of Activity.
EST_START_DATE	DATE	7		Estimated start date
EST_END_DATE	DATE	7		Estimated end date
EST_VARIANCE	NUMBER	22		Not Used
COST_HEALTH_ID	NUMBER	22	22	Cost Status
RESOURCE_HEALTH_ID	NUMBER	22	22	Resource Status
QUALITY_HEALTH_ID	NUMBER	22	22	Quality Status
COST_REASON	VARCHAR2	512		Cost Reason
RESOURCE_REASON	VARCHAR2	512		Resource Reason
QUALITY_REASON	VARCHAR2	512		Quality Reason
SCH_REASON	VARCHAR2	512		Schedule Reason
ZERO_DURATION	NUMBER	22		0 (NO) / 1 (YES)
OVERALL_STATUS_ID	NUMBER	22	22	Overall Status
PROGRAM_TYPE	VARCHAR2	400		Out of the box, the value is a foreign key to ODM_PROGRAM_TYPE_D.ENTRY_ID column
REGION	VARCHAR2	400		Out of the box, the value is a foreign key to ODM_REGION_LIST_D.ENTRY_ID column
DIVISION	VARCHAR2	400		Out of the box, the value is a foreign key to ODM_DIVISION_D.ENTRY_ID column
PRODUCT_LINE	VARCHAR2	400		Out of the box, the value is a foreign key to ODM_PROD_LINE_D.ENTRY_ID column
CUSTOMER	VARCHAR2	400		Out of the box, the value is a foreign key to ODM_CUSTOMER_D.ENTRY_ID column
LAUNCH_YEAR	VARCHAR2	400		Out of the box, the value is a foreign key to ODM_LAUNCH_YEAR_LIST_D.ENTRY_ID column
GLOBAL	NUMBER	22	22	0 (NO) / 1 (YES)
CONTROLLED_ID	NUMBER	22	1	0 (NO) / 1 (YES)
ACT_LABOR_COST_VALUE	NUMBER	22	18	Actual labor Cost
ACT_LABOR_COST_CURRENCY	NUMBER	22	4	Actual labor Cost Currency ID
BGT_LABOR_COST_VALUE	NUMBER	22	18	Actual labor Cost
BGT_LABOR_COST_CURRENCY	NUMBER	22	4	Budgeted labor Cost Currency ID
EST_LABOR_COST_VALUE	NUMBER	22	18	Estimated labor Cost value
EST_LABOR_COST_CURRENCY	NUMBER	22	4	Estimated labor Cost Currency ID
ACT_FIXED_COST_VALUE	NUMBER	22	18	Actual fixed labor Cost value
ACT_FIXED_COST_CURRENCY	NUMBER	22	4	Actual fixed labor Cost Currency ID
BGT_FIXED_COST_VALUE	NUMBER	22	18	Budgeted fixed labor Cost value
BGT_FIXED_COST_CURRENCY	NUMBER	22	4	Budgeted fixed labor Cost Currency ID
EST_FIXED_COST_VALUE	NUMBER	22	18	Estimated fixed labor Cost value
EST_FIXED_COST_CURRENCY	NUMBER	22	4	Estimated fixed labor Cost Currency ID
ACT_CAPITAL_EXPENSES_VALUE	NUMBER	22	18	Actual capital value

Column	Type	Size	Precision	Comments
ACT_CAPITAL_EXPENSES_CURRENCY	NUMBER	22	4	Actual capital Currency ID
BGT_CAPITAL_EXPENSES_VALUE	NUMBER	22	18	Budgeted capital value
BGT_CAPITAL_EXPENSES_CURRENCY	NUMBER	22	4	Budgeted capital Currency ID
EST_CAPITAL_EXPENSES_VALUE	NUMBER	22	18	Estimated capital value
EST_CAPITAL_EXPENSES_CURRENCY	NUMBER	22	4	Estimated capital Currency ID
ACTUAL_TIME_ID	NUMBER	22	22	Actual Duration
BUDGETED_TIME_ID	NUMBER	22	22	Budgeted Duration
ESTIMATED_TIME_ID	NUMBER	22	22	Estimated Time Duration
CATEGORY7	VARCHAR2	400		Out of the box, the value is a foreign key to ODM_CATEGORY7_LIST_D.ENTRY_ID column
CATEGORY8	VARCHAR2	400		Out of the box, the value is a foreign key to ODM_CATEGORY8_LIST_D.ENTRY_ID column
CATEGORY9	VARCHAR2	400		Out of the box, the value is a foreign key to ODM_CATEGORY9_LIST_D.ENTRY_ID column
CATEGORY10	VARCHAR2	400		Out of the box, the value is a foreign key to ODM_CATEGORY10_LIST_D.ENTRY_ID column
SCHEDULE_EDIT	NUMBER	22	1	Schedule Editor
CRITICAL_PATH_ID	NUMBER	22	22	0 -> No and 1 -> Yes
ACT_LEVEL	NUMBER	22		Activity Level
SCH_DURATION	NUMBER	22		Schedule Duration
ACT_DURATION	NUMBER	22		Actual duration
EST_DURATION	NUMBER	22		Estimated duration
ACT_FLEX_COST_VALUE	NUMBER	22	18	Actual flex cost value
ACT_FLEX_COST_CURRENCY	NUMBER	22	4	Actual flex cost currency ID
BGT_FLEX_COST_VALUE	NUMBER	22	18	Budgeted flex cost value
BGT_FLEX_COST_CURRENCY	NUMBER	22	4	Budgeted flex cost currency ID
EST_FLEX_COST_VALUE	NUMBER	22	18	Estimated flex cost value
EST_FLEX_COST_CURRENCY	NUMBER	22	4	Estimated flex cost currency ID
ROLLUP_BGT_COST_FIXED	NUMBER	22	1	Rollup of budgeted fixed cost
ROLLUP_ACT_COST_FIXED	NUMBER	22	1	Rollup of actual fixed cost
ROLLUP_EST_COST_FIXED	NUMBER	22	1	Rollup of estimated fixed cost
ROLLUP_BGT_COST_CAPITAL	NUMBER	22	1	Rollup of budgeted capital cost
ROLLUP_ACT_COST_CAPITAL	NUMBER	22	1	Rollup of actual capital cost
ROLLUP_EST_COST_CAPITAL	NUMBER	22	1	Rollup of estimated capital cost
ROLLUP_BGT_COST_FLEX	NUMBER	22	1	Rollup of budgeted flex cost
ROLLUP_ACT_COST_FLEX	NUMBER	22	1	Rollup of actual flex cost
ROLLUP_EST_COST_FLEX	NUMBER	22	1	Rollup of estimated flex cost
ACT_TOTAL_COST_VALUE	NUMBER	22	18	Actual total cost value
ACT_TOTAL_COST_CURRENCY	NUMBER	22	4	Actual total cost currency ID
BGT_TOTAL_COST_VALUE	NUMBER	22	18	Budgeted total cost value
BGT_TOTAL_COST_CURRENCY	NUMBER	22	4	Budgeted total cost currency ID
EST_TOTAL_COST_VALUE	NUMBER	22	18	Estimated total cost value
EST_TOTAL_COST_CURRENCY	NUMBER	22	4	Estimated total cost currency ID

Column	Type	Size	Precision	Comments
LOCK_OBJ_ID	NUMBER	22	22	ID of activity from where this task is explicitly locked
TOTAL_PERCENT_ALLOC	NUMBER	22		Total percent allocation of all the resources on the team. (computed)
POOL_IDS_ID	VARCHAR2	4000		Comma separated pool ids from which users are assigned to the team
EST_START_VAR_WD_ID	NUMBER	22	22	Estimated start variance work days
EST_FINISH_VAR_WD_ID	NUMBER	22	22	Estimated finish variance work days
EST_DUR_VAR_WD_ID	NUMBER	22	22	Estimated duration variance work days
ACT_START_VAR_WD_ID	NUMBER	22	22	Actual start variance work days
ACT_FINISH_VAR_WD_ID	NUMBER	22	22	Actual finish variance work days
ACT_DUR_VAR_WD_ID	NUMBER	22	22	Actual duration Variance work days
EST_START_VAR_CD_ID	NUMBER	22	22	Estimated start variance calendar days
EST_FINISH_VAR_CD_ID	NUMBER	22	22	Estimated finish variance calendar days
EST_DUR_VAR_CD_ID	NUMBER	22	22	Estimated duration variance calendar days
ACT_START_VAR_CD_ID	NUMBER	22	22	Actual start variance calendar days
DELETE_FLAG	NUMBER	22	1	Identify whether this object is soft deleted. The value is 1 for soft delete
CREATE_DATE	DATE	7		Create Date
UPDATE_DATE	DATE	7		Update Date
DATE[01-15]_DATE	DATE	7		User defined field(s) of DATE type in PLM.
LIST[01-25]_ID	NUMBER	22	22	User defined field(s) of LIST type in PLM. Foreign Key to <configured List Dimension Table>.ENTRY_ID column. Refer to ODM_LISTDIM_CTL and ODM_DATA_DICTIONARY tables for identifying configured List Dimension table name.
MONEYCURRENCY[20-29]	NUMBER	22	4	Stores the Currency Code for the user defined field(s) of MONEY type in PLM
MONEYVALUE[20-29]	NUMBER	22	18	Stores the money value for the user defined field(s) of MONEY type in PLM
MULTILIST[01-15]	VARCHAR2	765		User defined field(s) of MULTILIST type on PLM. Stores comma separated list of entry IDs from the configured List Dimension table. These comma separated values are resolved and stored into ODM_<Table Name>_<Column Name>_MAP table.
NUMERIC[01-10]	NUMBER	22		User defined field(s) of NUMERIC type in PLM.
TEXT[01-25]	VARCHAR2	450		User defined field(s) of TEXT type in PLM.

ODM_PRG_GATES

Column	Type	Size	Precision	Comments
ID	NUMBER	22	22	Unique ID
CLASS_ID	NUMBER	22	22	Class ID
SUBCLASS_ID	NUMBER	22	22	Subclass ID
NAME	VARCHAR2	800		Name of the Activity
ACTIVITY_NUMBER_ID	VARCHAR2	150		Sequence no. of the Activity
STATUS_ID	NUMBER	22	22	Status of the Activity

Column	Type	Size	Precision	Comments
STATUSTYPE_ID	NUMBER	22	22	Out of the box, the value is a foreign key to ODM_STATUS_TYPE_D.ENTRY_ID column
OWNER_ID	NUMBER	22	22	Out of the box, the value is a foreign key to ODM_USERS_OBJ_D.ENTRY_ID column
DESCRIPTION	VARCHAR2	4000		Description of the Activity
DELEGATED_OWNER_ID	NUMBER	22		Out of the box, the value is a foreign key to ODM_USERS_OBJ_D.ENTRY_ID column
PARENT_ID	NUMBER	22	22	Parent ID of the Activity
ROOT_ID	NUMBER	22	22	Root ID of the Activity
SCH_START_DATE	DATE	7		Scheduled date of the Activity
SCH_END_DATE	DATE	7		Scheduled End date of the Activity
ACT_START_DATE	DATE	7		Actual date of the Activity
ACT_END_DATE	DATE	7		Actual End date of the Activity
WORKFLOW_ID	NUMBER	22	22	Workflow ID of the Activity
PERCENT_COMPLETE_ID	NUMBER	22	22	Percentage Complete
RESOURCE_TYPE_ID	NUMBER	22	22	Resource type ID
TEMPLATE_ID	NUMBER	22	22	Out of the box, the value is a foreign key to ODM_ACTIVITY_STATE_D.ENTRY_ID column
AUDIT_SCORE_ID	NUMBER	22	22	Audit score value of Activity
WEIGHT_ID	NUMBER	22	22	Activity Weight
HEALTH_ID	NUMBER	22	22	Activity Schedule status
LOCK_STATUS_ID	NUMBER	22	22	If Lock_User > 0 then 1 ; If Lock_User <= 0 then 0
LOCK_USER	NUMBER	22		Out of the box, the value is a foreign key to ODM_USERS_OBJ_D.ENTRY_ID column
VARIANCE	NUMBER	22		Not Used
OBJVERSION	NUMBER	22		Object Version
DISPLAY_ORDER	NUMBER	22		Display Order In Parent'S Schedule
PROCESS_ID	NUMBER	22		Not Used
FLAGS	VARCHAR2	32		0 (FALSE) / 1 (TRUE) for each position in the flag.
SUMMARY_PAGE	NUMBER	22		Not Used
ARCHIVED_ID	NUMBER	22	22	Archive Status Of Activity 0 (False) / 1 (True)
ROLLUP_HEALTH_STATUS	NUMBER	22		Rollup Health Status
ROUTE_DATE	DATE	7		Route date of the Activity
FINALCOMPLETE_DATE	DATE	7		Close Date
DURATION_TYPE	NUMBER	22		Duration Type of Activity.
DAYS_EFFORT	NUMBER	22		Days Effort of Activity.
EST_START_DATE	DATE	7		Estimated Start Date
EST_END_DATE	DATE	7		Estimated End Date
EST_VARIANCE	NUMBER	22		Not Used
COST_HEALTH_ID	NUMBER	22	22	Cost Status
RESOURCE_HEALTH_ID	NUMBER	22	22	Resource Status
QUALITY_HEALTH_ID	NUMBER	22	22	Quality Status
COST_REASON	VARCHAR2	512		Cost Reason
RESOURCE_REASON	VARCHAR2	512		Resource Reason

Column	Type	Size	Precision	Comments
QUALITY_REASON	VARCHAR2	512		Quality Reason
SCH_REASON	VARCHAR2	512		Schedule Reason
ZERO_DURATION	NUMBER	22		0 (NO) / 1 (YES)
OVERALL_STATUS_ID	NUMBER	22	22	Overall Status
PROGRAM_TYPE	VARCHAR2	400		Out of the box, the value is a foreign key to ODM_PROGRAM_TYPE_D.ENTRY_ID column
REGION	VARCHAR2	400		Out of the box, the value is a foreign key to ODM_REGION_LIST_D.ENTRY_ID column
DIVISION	VARCHAR2	400		Out of the box, the value is a foreign key to ODM_DIVISION_D.ENTRY_ID column
PRODUCT_LINE	VARCHAR2	400		Out of the box, the value is a foreign key to ODM_PROD_LINE_D.ENTRY_ID column
CUSTOMER	VARCHAR2	400		Out of the box, the value is a foreign key to ODM_CUSTOMER_D.ENTRY_ID column
LAUNCH_YEAR	VARCHAR2	400		Out of the box, the value is a foreign key to ODM_LAUNCH_YEAR_LIST_D.ENTRY_ID column
GLOBAL	NUMBER	22	1	0 (NO) / 1 (YES)
CONTROLLED_ID	NUMBER	22	22	0 (NO) / 1 (YES)
ACT_LABOR_COST_VALUE	NUMBER	22	18	Actual Labor Cost
ACT_LABOR_COST_CURRENCY	NUMBER	22	4	Actual Labor Cost Currency ID
BGT_LABOR_COST_VALUE	NUMBER	22	18	Actual Labor Cost
BGT_LABOR_COST_CURRENCY	NUMBER	22	4	Budgeted Labor Cost Currency ID
EST_LABOR_COST_VALUE	NUMBER	22	18	Estimated Labor Cost Value
EST_LABOR_COST_CURRENCY	NUMBER	22	4	Estimated Labor Cost Currency ID
ACT_FIXED_COST_VALUE	NUMBER	22	18	Actual fixed Labor Cost Value
ACT_FIXED_COST_CURRENCY	NUMBER	22	4	Actual Fixed Labor Cost Currency ID
BGT_FIXED_COST_VALUE	NUMBER	22	18	Budgeted Fixed Labor Cost Value
BGT_FIXED_COST_CURRENCY	NUMBER	22	4	Budgeted Fixed Labor Cost Currency ID
EST_FIXED_COST_VALUE	NUMBER	22	18	Estimated Fixed Labor Cost Value
EST_FIXED_COST_CURRENCY	NUMBER	22	4	Estimated Fixed Labor Cost Currency ID
ACT_CAPITAL_EXPENSES_VALUE	NUMBER	22	18	Actual Capital Value
ACT_CAPITAL_EXPENSES_CURRENCY	NUMBER	22	4	Actual Capital Currency ID
BGT_CAPITAL_EXPENSES_VALUE	NUMBER	22	18	Budgeted Capital Value
BGT_CAPITAL_EXPENSES_CURRENCY	NUMBER	22	4	Budgeted Capital Currency ID
EST_CAPITAL_EXPENSES_VALUE	NUMBER	22	18	Estimated Capital Value
EST_CAPITAL_EXPENSES_CURRENCY	NUMBER	22	4	Estimated Capital Currency ID
ACTUAL_TIME_ID	NUMBER	22	22	Actual Duration
BUDGETED_TIME_ID	NUMBER	22	22	Budgeted Duration
ESTIMATED_TIME_ID	NUMBER	22	22	Estimated Time Duration
CATEGORY7	VARCHAR2	400		Out of the box, the value is a foreign key to ODM_CATEGORY7_LIST_D.ENTRY_ID column
CATEGORY8	VARCHAR2	400		Out of the box, the value is a foreign key to ODM_CATEGORY8_LIST_D.ENTRY_ID column
CATEGORY9	VARCHAR2	400		Out of the box, the value is a foreign key to ODM_CATEGORY9_LIST_D.ENTRY_ID column

Column	Type	Size	Precision	Comments
CATEGORY10	VARCHAR2	400		Out of the box, the value is a foreign key to ODM_CATEGORY10_LIST_D.ENTRY_ID column
SCHEDULE_EDIT	NUMBER	22	1	Schedule Editor
CRITICAL_PATH_ID	NUMBER	22	22	0 -> No and 1 -> Yes
ACT_LEVEL	NUMBER	22		Activity Level
SCH_DURATION	NUMBER	22		Schedule Duration
ACT_DURATION	NUMBER	22		Actual Duration
EST_DURATION	NUMBER	22		Estimated Duration
ACT_FLEX_COST_VALUE	NUMBER	22	18	Actual Flex Cost Value
ACT_FLEX_COST_CURRENCY	NUMBER	22	4	Actual Flex Cost Currency ID
BGT_FLEX_COST_VALUE	NUMBER	22	18	Budgeted Flex Cost Value
BGT_FLEX_COST_CURRENCY	NUMBER	22	4	Budgeted Flex Cost Currency ID
EST_FLEX_COST_VALUE	NUMBER	22	18	Estimated Flex Cost Value
EST_FLEX_COST_CURRENCY	NUMBER	22	4	Estimated Flex Cost Currency ID
ROLLUP_BGT_COST_FIXED	NUMBER	22	1	Rollup of Budgeted Fixed Cost
ROLLUP_ACT_COST_FIXED	NUMBER	22	1	Rollup of Actual Fixed Cost
ROLLUP_EST_COST_FIXED	NUMBER	22	1	Rollup of Estimated Fixed Cost
ROLLUP_BGT_COST_CAPITAL	NUMBER	22	1	Rollup of Budgeted Capital Cost
ROLLUP_ACT_COST_CAPITAL	NUMBER	22	1	Rollup of Actual Capital Cost
ROLLUP_EST_COST_CAPITAL	NUMBER	22	1	Rollup of Estimated Capital Cost
ROLLUP_BGT_COST_FLEX	NUMBER	22	1	Rollup of Budgeted Flex Cost
ROLLUP_ACT_COST_FLEX	NUMBER	22	1	Rollup of Actual Flex Cost
ROLLUP_EST_COST_FLEX	NUMBER	22	1	Rollup of Estimated Flex Cost
ACT_TOTAL_COST_VALUE	NUMBER	22	18	Actual Total Cost Value
ACT_TOTAL_COST_CURRENCY	NUMBER	22	4	Actual Total Cost Currency ID
BGT_TOTAL_COST_VALUE	NUMBER	22	18	Budgeted Total Cost Value
BGT_TOTAL_COST_CURRENCY	NUMBER	22	4	Budgeted Total Cost Currency ID
EST_TOTAL_COST_VALUE	NUMBER	22	18	Estimated Total Cost Value
EST_TOTAL_COST_CURRENCY	NUMBER	22	4	Estimated Total Cost Currency ID
LOCK_OBJ_ID	NUMBER	22	22	ID of Activity from where this task is explicitly locked
TOTAL_PERCENT_ALLOC	NUMBER	22	22	Total percent allocation of all the resources on the team. (computed)
POOL_IDS_ID	VARCHAR2	4000		Comma separated pool ids from which users are assigned to the team
EST_START_VAR_WD_ID	NUMBER	22	22	Estimated start variance work days
EST_FINISH_VAR_WD_ID	NUMBER	22	22	Estimated finish variance work days
EST_DUR_VAR_WD_ID	NUMBER	22	22	Estimated duration variance work days
ACT_START_VAR_WD_ID	NUMBER	22	22	Actual start variance work days
ACT_FINISH_VAR_WD_ID	NUMBER	22	22	Actual finish variance work days
ACT_DUR_VAR_WD_ID	NUMBER	22	22	Actual duration Variance work days
EST_START_VAR_CD_ID	NUMBER	22	22	Estimated start variance calendar days
EST_FINISH_VAR_CD_ID	NUMBER	22	22	Estimated finish variance calendar days

Column	Type	Size	Precision	Comments
EST_DUR_VAR_CD_ID	NUMBER	22	22	Estimated duration variance calendar days
ACT_START_VAR_CD_ID	NUMBER	22	22	Actual start variance calendar days
ACT_FINISH_VAR_CD_ID	NUMBER	22	22	Actual finish variance calendar days
ACT_DUR_VAR_CD_ID	NUMBER	22	22	Actual duration Variance calendar days
UI_BLOB_DATA_ID	NUMBER	22	22	Image used in Summary page
CREATE_USER_ID	NUMBER	22	22	Create User ID
ACCEPTACLPROPAGATION	NUMBER	22	22	Accept ACL Propagation Flag.
ACT_CREATE_DATE	DATE	7		Actual Create Date
CREATED_FROM_TEMPLATE	NUMBER	22		Template information from where it is created
DELETE_FLAG	NUMBER	22	1	Identify whether this object is soft deleted. The value is 1 for soft delete.
CREATE_DATE	DATE	7		Create Date
UPDATE_DATE	DATE	7		Update Date
DATE[01-15]_DATE	DATE	7		User defined field(s) of DATE type in PLM.
LIST[01-25]_ID	NUMBER	22	22	User defined field(s) of LIST type in PLM. Foreign Key to <configured List Dimension Table>.ENTRY_ID column. Refer to ODM_LISTDIM_CTL and ODM_DATA_DICTIONARY tables for identifying configured List Dimension table name.
MONEYCURRENCY[20-29]	NUMBER	22	4	Stores the Currency Code for the user defined field(s) of MONEY type in PLM
MONEYVALUE[20-29]	NUMBER	22	18	Stores the money value for the user defined field(s) of MONEY type in PLM
MULTILIST[01-15]	VARCHAR2	765		User defined field(s) of MULTILIST type on PLM. Stores comma seperated list of entry IDs from the configured List Dimension table. These comma seperated values are resolved and stored into ODM_<Table Name>_<Column Name>_MAP table.
NUMERIC[01-10]	NUMBER	22		User defined field(s) of NUMERIC type in PLM.
TEXT[01-25]	VARCHAR2	450		User defined field(s) of TEXT type in PLM.

ODM_PRICE_PUB_PRICE

Column	Type	Size	Precision	Comments
ID	NUMBER	22	22	Unique Identifier
CLASS_ID	NUMBER	22	22	Class ID(10321)
SUBCLASS_ID	NUMBER	22	22	Sub class ID
OBJVERSION	NUMBER	22		Object version
PRICE_TYPE_ID	NUMBER	22	22	Price Type ID
PRICE_NUMBER	VARCHAR2	150		Price Number
DESCRIPTION	VARCHAR2	300		Description
OWNER_ID	NUMBER	22	22	Out of the box, the value is a foreign key to ODM_USERS_OBJ_D.ENTRY_ID column
CUSTOMER_ID	NUMBER	22	22	Customer to whom this price applies.Out of the box, the value is a foreign key to ODM_CUSTOMER_OBJ_D.ENTRY_ID column
PROGRAM_ID	NUMBER	22	22	Program that this Price is applicable to

Column	Type	Size	Precision	Comments
SUPPLIER_ID	NUMBER	22	22	Supplier to whom this price is applicable. Out of the box, the value is a foreign key to ODM_SUPPLIERS_OBJ_D.ENTRY_ID column
ITEM	NUMBER	22	10	Item for which this price is applicable
ITEM_CHANGE	NUMBER	22	10	Change for the Item
MFR_PART	NUMBER	22	10	Manufacturer Part
MFG_SITE_ID	NUMBER	22	22	Manufacturing site. Out of the box, the value is a foreign key to ODM_SITES_OBJ_D.ENTRY_ID column
PART_EOL_DATE	DATE	7		End of life date of the item or manufacturer part as given by the supplier
NCNR_ID	NUMBER	22	22	Non cancelable and non returnable
QUANTITY_MIN	NUMBER	22	20	Minimum quantity to be ordered from Supplier
QUANTITY_MULT	NUMBER	22	20	Number of units in a package
INVENTORY	NUMBER	22	20	Available stock
AUTHORIZED_SUPPLIERS	VARCHAR2	300		Authorized suppliers of the Item. Out of the box, the value is a foreign key to ODM_SUPPLIERS_OBJ_D.ENTRY_ID column
DEFAULT_CHANGE	NUMBER	22		Default Changes
FLAGS	VARCHAR2	32		
CREATEDATE	DATE	7		Price create date
MODIFYDATE	DATE	7		Published Price updated date
REF_NUMBER	VARCHAR2	150		Reference No. for the price published
PART_NUMBER	VARCHAR2	300		De-normalization of item/mfrpart number to help in querying price objects through part numbers
CREATE_USER_ID	NUMBER	22	22	Create user ID
DATE[01-15]_DATE	DATE	7		User defined field(s) of DATE type in PLM.
LIST[01-25]_ID	NUMBER	22	22	User defined field(s) of LIST type in PLM. Foreign Key to <configured List Dimension Table>.ENTRY_ID column. Refer to ODM_LISTDIM_CTL and ODM_DATA_DICTIONARY tables for identifying configured List Dimension table name.
MONEYCURRENCY[20-29]	NUMBER	22	4	Stores the Currency Code for the user defined field(s) of MONEY type in PLM
MONEYVALUE[20-29]	NUMBER	22	18	Stores the money value for the user defined field(s) of MONEY type in PLM
MULTILIST[01-15]	VARCHAR2	765		User defined field(s) of MULTILIST type on PLM. Stores comma separated list of entry IDs from the configured List Dimension table. These comma separated values are resolved and stored into ODM_<Table Name>_<Column Name>_MAP table.
NUMERIC[01-10]	NUMBER	22		User defined field(s) of NUMERIC type in PLM.
TEXT[01-25]	VARCHAR2	450		User defined field(s) of TEXT type in PLM.
ACCEPTACLPROPAGATION	NUMBER	22	22	Accept ACL Propagation Flag.
DELETE_FLAG	NUMBER	22	1	Identify if this is a deleted object. 1-Deleted; 0-Not Deleted
CREATE_DATE	DATE	7		Create date
UPDATE_DATE	DATE	7		Update date

ODM_PRICE_QUOTE_HIST

Column	Type	Size	Precision	Comments
DELETE_FLAG	NUMBER	22	1	Identify if this is a deleted object. 1-Deleted; 0-Not Deleted
CREATE_DATE	DATE	7		Create date
UPDATE_DATE	DATE	7		Update date
ID	NUMBER	22	22	Unique Identifier
CLASS_ID	NUMBER	22	22	Class ID(10338)
SUBCLASS_ID	NUMBER	22	22	Sub class ID
OBJVERSION	NUMBER	22		Object version
PRICE_TYPE_ID	NUMBER	22	22	Price Type ID
PRICE_NUMBER	VARCHAR2	150		Price Number
DESCRIPTION	VARCHAR2	300		Description
OWNER_ID	NUMBER	22	22	Owner. Out of the box, the value is a foreign key to ODM_USERS_OBJ_D.ENTRY_ID column
CUSTOMER_ID	NUMBER	22	22	Customer associated with this Price.Out of the box, the value is a foreign key to ODM_CUSTOMER_OBJ_D.ENTRY_ID column
PROGRAM_ID	NUMBER	22	22	Program associated with Price
SUPPLIER_ID	NUMBER	22	22	Supplier associated with the Price.Out of the box, the value is a foreign key to ODM_SUPPLIERS_OBJ_D.ENTRY_ID column
ITEM	NUMBER	22	10	Item for which this price is applicable
ITEM_CHANGE	NUMBER	22	10	
MFR_PART	NUMBER	22	10	Manufacturer Part for which this Price is applicable
MFG_SITE_ID	NUMBER	22	22	Manufacturing site for which this price is applicable.Out of the box, the value is a foreign key to ODM_SITES_OBJ_D.ENTRY_ID column
PART_EOL_DATE	DATE	7		End of life date of the item or manufacturer part as given by the supplier
NCNR_ID	NUMBER	22	22	Non cancelable and non returnable
QUANTITY_MIN	NUMBER	22	20	Minimum quantity to be ordered from the Supplier
QUANTITY_MULT	NUMBER	22	20	Number of units in a package
INVENTORY	NUMBER	22	20	Available Stock
AUTHORIZED_SUPPLIERS	VARCHAR2	300		Out of the box, the value is a foreign key to ODM_SUPPLIERS_OBJ_D.ENTRY_ID column
DEFAULT_CHANGE	NUMBER	22		Default Changes
FLAGS	VARCHAR2	32		
CREATEDATE	DATE	7		Price quoted date
MODIFYDATE	DATE	7		Price updated quote date
REF_NUMBER	VARCHAR2	150		Reference No. for the price quoted
PART_NUMBER	VARCHAR2	300		De-normalization of item/mfrpart number to help in querying price objects through part numbers
CREATE_USER_ID	NUMBER	22	22	Create user ID
ACCEPTACLPROPAGATION	NUMBER	22	22	Accept ACL Propagation Flag.

Column	Type	Size	Precision	Comments
DATE[01-15]_DATE	DATE	7		User defined field(s) of DATE type in PLM.
LIST[01-25]_ID	NUMBER	22	22	User defined field(s) of LIST type in PLM. Foreign Key to <configured List Dimension Table>.ENTRY_ID column. Refer to ODM_LISTDIM_CTL and ODM_DATA_DICTIONARY tables for identifying configured List Dimension table name.
MONEYCURRENCY[20-29]	NUMBER	22	4	Stores the Currency Code for the user defined field(s) of MONEY type in PLM
MONEYVALUE[20-29]	NUMBER	22	18	Stores the money value for the user defined field(s) of MONEY type in PLM
MULTILIST[01-15]	VARCHAR2	765		User defined field(s) of MULTILIST type on PLM. Stores comma seperated list of entry IDs from the configured List Dimension table. These comma seperated values are resolved and stored into ODM_<Table Name>_<Column Name>_MAP table.
NUMERIC[01-10]	NUMBER	22		User defined field(s) of NUMERIC type in PLM.
TEXT[01-25]	VARCHAR2	450		User defined field(s) of TEXT type in PLM.

ODM_PRODUCT_LINE

Column	Type	Size	Precision	Comments
ID	NUMBER	22	22	Unique identifier
ORG_ID	NUMBER	22	22	Organization ID FK
PL_NAME	VARCHAR2	384		Name
PL_DESC	VARCHAR2	720		Description
CREATED_BY	NUMBER	22	12	Created by
MODIFIED_BY	NUMBER	22	12	Last Modified by
DELETE_FLAG	NUMBER	22	1	Identify if this is a deleted object. 1-Deleted; 0-Not Deleted
CREATE_DATE	DATE	7		Create date
UPDATE_DATE	DATE	7		Update date

ODM_PRODUCT_LINE_MAP

Column	Type	Size	Precision	Comments
OBJ_ID	NUMBER	22	22	Object ID
OBJ_TYPE	NUMBER	22	12	Class ID
PRODUCTLINE_ID	NUMBER	22	22	Product line ID
DELETE_FLAG	NUMBER	22	1	Identify if this is a deleted object. 1-Deleted; 0-Not Deleted

ODM_PROGRAM_HISTORY

Column	Type	Size	Precision	Comments
--------	------	------	-----------	----------

Column	Type	Size	Precision	Comments
ID	NUMBER	22	22	Unique ID
OBJ_ID	NUMBER	22	22	ID of the associated object (Activity, Gate or Discussion)
CLASS_ID	NUMBER	22	22	Class ID of the associated object (Activity, Gates or Discussion)
USER_ID	NUMBER	22	22	ID of user who took the action
TIMESTAMP	DATE	7		Server date when action was taken
ACTION	NUMBER	22		Type of action
DETAILS	VARCHAR2	4000		Object Details
COMMENTS	VARCHAR2	4000		User comments
LOCAL_DATE	DATE	7		Local Date
DELETE_FLAG	NUMBER	22	1	Identify if this is a deleted object. 1-Deleted; 0-Not Deleted
CREATE_DATE	DATE	7		Create Date
UPDATE_DATE	DATE	7		Update Date

ODM_PSR_NCR

Column	Type	Size	Precision	Comments
ID	NUMBER	22	22	Non Conformance Report ID
CLASS_ID	NUMBER	22	22	Non Conformance Report Class id(4895)
SUBCLASS_ID	NUMBER	22	22	Non Conformance Report Subclass ID
CATEGORY_ID	NUMBER	22	22	Out of the box, the value is a foreign key to ODM_PSR_CATEGORY_D.ENTRY_ID column
OBJVERSION	NUMBER	22	22	Object Version Number
FLAGS	VARCHAR2	288		0 (FALSE)/1 (TRUE) for each position in the flag.
NCR_NO	VARCHAR2	1890		Non Conformance Report Number
ASSIGNED_TO_ID	NUMBER	22	22	Out of the box, the value is a foreign key to ODM_QUALITY_ANALYST_OBJ_D.ENTRY_ID column
ASSIGN_DATE	DATE	7		NCR Assigned date
ORIGINATOR_ID	NUMBER	22	22	Out of the box, the value is a foreign key to ODM_USERS_OBJ_D.ENTRY_ID column
ORIG_DATE	DATE	7		NCR Originated Date
STATUS_ID	NUMBER	22	22	NCR Status
CLOSE_DATE	DATE	7		NCR Close Date
DESCRIPTION	VARCHAR2	4000		Non Conformance Report Description
RESOLUTION_CODE_ID	NUMBER	22	22	Out of the box, the value is a foreign key to ODM_PR_DISPOSITION_D.ENTRY_ID column
WORKFLOW_ID	NUMBER	22	22	NCR Workflow ID
CUST_ID	NUMBER	22	22	Customer ID
RELEASE_DATE	DATE	7		Non Conformance Report Released Date
IN_REVIEW_ID	NUMBER	22	22	If the object is at REVIEW status type, it is 1 else Null.
PROCESS_ID	NUMBER	22	22	NULL if object is at UNASSIGNED, PENDING OR COMPLETE STATUS TYPE
STATUSTYPE_ID	NUMBER	22	22	Out of the box, the value is a foreign key to ODM_STATUS_TYPE_D.ENTRY_ID column

Column	Type	Size	Precision	Comments
ROUTE_DATE	DATE	7		Date NCR was changed to Review status
SUPPLIER	VARCHAR2	2295		Supplier ID
EXPECTED_RESOLUTION_DATE	DATE	7		Date of Resolution
SEVERITY_ID	NUMBER	22	22	Out of the box, the value is a foreign key to ODM_SEVERITY_D.ENTRY_ID column
PRODUCT_LINES	VARCHAR2	2295		Out of the box, the value is a foreign key to ODM_PSR_PR_PRODUCTLINE_D.ENTRY_ID column
CREATE_USER_ID	NUMBER	22	22	Create user ID
ACCEPTACLPROPAGATION	NUMBER	22	22	Accept ACL Propagation Flag.
DELETE_FLAG	NUMBER	22	1	Identify if this is a deleted object. 1-Deleted; 0-Not Deleted
CREATE_DATE	DATE	7		Create date
UPDATE_DATE	DATE	7		Update date
DATE[01-15]_DATE	DATE	7		User defined field(s) of DATE type in PLM.
LIST[01-25]_ID	NUMBER	22	22	User defined field(s) of LIST type in PLM. Foreign Key to <configured List Dimension Table>.ENTRY_ID column. Refer to ODM_LISTDIM_CTL and ODM_DATA_DICTIONARY tables for identifying configured List Dimension table name.
MONEYCURRENCY[20-29]	NUMBER	22	4	Stores the Currency Code for the user defined field(s) of MONEY type in PLM
MONEYVALUE[20-29]	NUMBER	22	18	Stores the money value for the user defined field(s) of MONEY type in PLM
MULTILIST[01-15]	VARCHAR2	765		User defined field(s) of MULTILIST type on PLM. Stores comma separated list of entry IDs from the configured List Dimension table. These comma separated values are resolved and stored into ODM_<Table Name>_<Column Name>_MAP table.
NUMERIC[01-10]	NUMBER	22		User defined field(s) of NUMERIC type in PLM.
TEXT[01-25]	VARCHAR2	450		User defined field(s) of TEXT type in PLM.

ODM_PSR_NCR_ITEM

Column	Type	Size	Precision	Comments
ID	NUMBER	22	22	Unique ID
NCR_ID	NUMBER	22	22	ID of NCR Object
ITEM_ID	NUMBER	22	22	Associated Item ID for NCR
REV_FIXED_ID	NUMBER	22	22	Rev ID that fixed the NCR
REV_FOUND_ID	NUMBER	22	22	Rev ID that found the NCR
QUANTITY_AFFECTED	NUMBER	22		Quantity Affected
FAILURE_MODE_ID	NUMBER	22	22	Item failure mode ID
CHANGE_ID	NUMBER	22	22	ID for Changes(ECO,MCO etc)
SITES_ID	NUMBER	22	22	ID of Affected Site
SERIAL_LOT_NUMBER	VARCHAR2	255		Serial/Lot Number
CONFORMANCE_SPEC	VARCHAR2	255		Conformance Specifications
TOTAL_QUANTITY_SUSPECT	NUMBER	22		Total Quantity Suspect

Column	Type	Size	Precision	Comments
QUANTITY_CHECKED	NUMBER	22		Quantity Checked
RMA_NUMBER	VARCHAR2	255		RMA Number
CONFORMING_MATERIAL_DATE	DATE	7		Conforming Material Date
DISPOSITION01_ID	NUMBER	22	22	User defined extensions For all the disposition ID's
DISPOSITION02_ID	NUMBER	22	22	User defined extensions For all the disposition ID's
DISPOSITION03_ID	NUMBER	22	22	User defined extensions For all the disposition ID's
DISPOSITION04_ID	NUMBER	22	22	User defined extensions For all the disposition ID's
DISPOSITION05_ID	NUMBER	22	22	User defined extensions For all the disposition ID's
DISPOSITION06_ID	NUMBER	22	22	User defined extensions For all the disposition ID's
DISPOSITION07_ID	NUMBER	22	22	User defined extensions For all the disposition ID's
DISPOSITION08_ID	NUMBER	22	22	User defined extensions For all the disposition ID's
DISPOSITION09_ID	NUMBER	22	22	User defined extensions For all the disposition ID's
DISPOSITION10_ID	NUMBER	22	22	User defined extensions For all the disposition ID's
DELETE_FLAG	NUMBER	22	1	Identify if this is a deleted object. 1-Deleted; 0-Not Deleted
CREATE_DATE	DATE	7		Create date
UPDATE_DATE	DATE	7		Update date
DATE[01-20]_DATE	DATE	7		User defined field(s) of DATE type in PLM.
LIST[01-25]_ID	NUMBER	22	22	User defined field(s) of LIST type in PLM. Foreign Key to <configured List Dimension Table>.ENTRY_ID column. Refer to ODM_LISTDIM_CTL and ODM_DATA_DICTIONARY tables for identifying configured List Dimension table name.
NUMERIC[01-05]	NUMBER	22		User defined field(s) of NUMERIC type in PLM.
TEXT[01-15]	VARCHAR2	150		User defined field(s) of TEXT type in PLM.

ODM_PSR_PR

Column	Type	Size	Precision	Comments
ID	NUMBER	22	22	Problem Report ID
CLASS_ID	NUMBER	22	22	Problem Report Class id(4878)
SUBCLASS_ID	NUMBER	22	22	Problem Report Subclass ID
CATEGORY_ID	NUMBER	22	22	Out of the box, the value is a foreign key to ODM_PSR_CATEGORY_D.ENTRY_ID column
OBJVERSION	NUMBER	22	22	Object Version Number
FLAGS	VARCHAR2	288		0 (FALSE)/1 (TRUE) for each position in the flag.
PR_NO	VARCHAR2	1890		Prooblem Report Number
ASSIGNED_TO_ID	NUMBER	22	22	Out of the box, the value is a foreign key to ODM_QUALITY_ANALYST_OBJ_D.ENTRY_ID column
ASSIGN_DATE	DATE	7		PR Assigned date
ORIGINATOR_ID	NUMBER	22	22	Out of the box, the value is a foreign key to ODM_USERS_OBJ_D.ENTRY_ID column
ORIG_DATE	DATE	7		PR Originated Date
STATUS_ID	NUMBER	22	22	PR Status

Column	Type	Size	Precision	Comments
CLOSE_DATE	DATE	7		PR Close Date
DESCRIPTION	VARCHAR2	4000		Problem Report Description
RESOLUTION_CODE_ID	NUMBER	22	22	Out of the box, the value is a foreign key to ODM_PR_DISPOSITION_D.ENTRY_ID column
WORKFLOW_ID	NUMBER	22	22	PR Workflow ID
CUST_ID	NUMBER	22	22	Customer ID
RELEASE_DATE	DATE	7		Problem Report Released Date
IN_REVIEW_ID	NUMBER	22	22	If the object is at REVIEW status type, it is 1 else Null.
PROCESS_ID	NUMBER	22	22	NULL if object is at UNASSIGNED, PENDING OR COMPLETE STATUS TYPE
STATUSTYPE_ID	NUMBER	22	22	Out of the box, the value is a foreign key to ODM_STATUS_TYPE_D.ENTRY_ID column
ROUTE_DATE	DATE	7		Date QCR was changed to Review status
SUPPLIER	VARCHAR2	2295		Supplier ID
EXPECTED_RESOLUTION_DATE	DATE	7		Date of Resolution
SEVERITY_ID	NUMBER	22	22	Out of the box, the value is a foreign key to ODM_SEVERITY_D.ENTRY_ID column
PRODUCT_LINES	VARCHAR2	2295		Out of the box, the value is a foreign key to ODM_PSR_PR_PRODUCTLINE_D.ENTRY_ID column
CREATE_USER_ID	NUMBER	22	22	Create user ID
ACCEPTACLPROPAGATION	NUMBER	22	22	Accept ACL Propagation Flag.
DELETE_FLAG	NUMBER	22	1	Identify if this is a deleted object. 1-Deleted; 0-Not Deleted
CREATE_DATE	DATE	7		Create date
UPDATE_DATE	DATE	7		Update date
DATE[01-15]_DATE	DATE	7		User defined field(s) of DATE type in PLM.
LIST[01-25]_ID	NUMBER	22	22	User defined field(s) of LIST type in PLM. Foreign Key to <configured List Dimension Table>.ENTRY_ID column. Refer to ODM_LISTDIM_CTL and ODM_DATA_DICTIONARY tables for identifying configured List Dimension table name.
MONEYCURRENCY[20-29]	NUMBER	22	4	Stores the Currency Code for the user defined field(s) of MONEY type in PLM
MONEYVALUE[20-29]	NUMBER	22	18	Stores the money value for the user defined field(s) of MONEY type in PLM
MULTILIST[01-15]	VARCHAR2	765		User defined field(s) of MULTILIST type on PLM. Stores comma seperated list of entry IDs from the configured List Dimension table. These comma seperated values are resolved and stored into ODM_<Table Name>_<Column Name>_MAP table.
NUMERIC[01-10]	NUMBER	22		User defined field(s) of NUMERIC type in PLM.
TEXT[01-25]	VARCHAR2	450		User defined field(s) of TEXT type in PLM.

ODM_PSR_PR_ITEM

Column	Type	Size	Precision	Comments
--------	------	------	-----------	----------

Column	Type	Size	Precision	Comments
ID	NUMBER	22	22	Unique ID
PR_ID	NUMBER	22	22	ID of PR Object
ITEM_ID	NUMBER	22	22	Associated Item ID for PR
REV_FIXED_ID	NUMBER	22	22	Rev ID that fixed the problem
REV_FOUND_ID	NUMBER	22	22	Rev ID that found the problem
QUANTITY_AFFECTED	NUMBER	22		Quantity Affected
FAILURE_MODE_ID	NUMBER	22	22	Item failure mode ID
CHANGE_ID	NUMBER	22	22	ID for Changes(ECO,MCO etc)
SITES_ID	NUMBER	22	22	ID of Affected Site
SERIAL_LOT_NUMBER	VARCHAR2	255		Serial/Lot Number
CONFORMANCE_SPEC	VARCHAR2	255		Conformance Specifications
TOTAL_QUANTITY_SUSPECT	NUMBER	22		Total Quantity Suspect
QUANTITY_CHECKED	NUMBER	22		Quantity Checked
RMA_NUMBER	VARCHAR2	255		RMA Number
CONFORMING_MATERIAL_DATE	DATE	7		Conforming Material Date
DISPOSITION01_ID	NUMBER	22	22	User defined extensions For all the disposition ID's
DISPOSITION02_ID	NUMBER	22	22	User defined extensions For all the disposition ID's
DISPOSITION03_ID	NUMBER	22	22	User defined extensions For all the disposition ID's
DISPOSITION04_ID	NUMBER	22	22	User defined extensions For all the disposition ID's
DISPOSITION05_ID	NUMBER	22	22	User defined extensions For all the disposition ID's
DISPOSITION06_ID	NUMBER	22	22	User defined extensions For all the disposition ID's
DISPOSITION07_ID	NUMBER	22	22	User defined extensions For all the disposition ID's
DISPOSITION08_ID	NUMBER	22	22	User defined extensions For all the disposition ID's
DISPOSITION09_ID	NUMBER	22	22	User defined extensions For all the disposition ID's
DISPOSITION10_ID	NUMBER	22	22	User defined extensions For all the disposition ID's
DELETE_FLAG	NUMBER	22	1	Identify if this is a deleted object. 1-Deleted; 0-Not Deleted
CREATE_DATE	DATE	7		Create date
UPDATE_DATE	DATE	7		Update date
DATE[01-20]_DATE	DATE	7		User defined field(s) of DATE type in PLM.
LIST[01-25]_ID	NUMBER	22	22	User defined field(s) of LIST type in PLM. Foreign Key to <configured List Dimension Table>.ENTRY_ID column. Refer to ODM_LISTDIM_CTL and ODM_DATA_DICTIONARY tables for identifying configured List Dimension table name.
NUMERIC[01-05]	NUMBER	22		User defined field(s) of NUMERIC type in PLM.
TEXT[01-15]	VARCHAR2	150		User defined field(s) of TEXT type in PLM.

ODM_QCR_AUDIT

Column	Type	Size	Precision	Comments
--------	------	------	-----------	----------

Column	Type	Size	Precision	Comments
ID	NUMBER	22	22	Unique ID
CLASS_ID	NUMBER	22	22	Audit Class ID(4428)
SUBCLASS_ID	NUMBER	22	22	Audit Subclass ID
AUDIT_NUMBER	VARCHAR2	90		Audit Number
CATEGORY_ID	NUMBER	22	22	Out of the box, the value is a foreign key to ODM_QCR_CATEGORY_D.ENTRY_ID column
STATUS_ID	NUMBER	22	22	Audit Satus
STATUSTYPE_ID	NUMBER	22	22	Out of the box, the value is a foreign key to ODM_STATUS_TYPE_D.ENTRY_ID column
ORIGINATOR_ID	NUMBER	22	22	Out of the box, the value is a foreign key to ODM_USERS_OBJ_D.ENTRY_ID column
OWNER_ID	NUMBER	22	22	Out of the box, the value is a foreign key to ODM_QUALITY_ADMIN_OBJ_D.ENTRY_ID column
RELEASE_DATE	DATE	7		Audit Release Date
DESCRIPTION	VARCHAR2	4000		Audit Description
REASON	VARCHAR2	4000		Reason for Audit
OBJVERSION	NUMBER	22		Object version Number
SUBMIT_DATE	DATE	7		Submit Date (Quality Change for Audit)
FLAGS	VARCHAR2	32		0 (FALSE)/1 (TRUE) for each position in the flag.
WORKFLOW_ID	NUMBER	22	22	Audit Workflow ID
FINALCOMPLETE_DATE	DATE	7		Date Audit Was Closed.
PROCESS_ID	NUMBER	22	22	NULL if object is at UNASSIGNED, PENDING OR COMPLETE STATUS TYPE
IN_REVIEW_ID	NUMBER	22	22	If the object is at REVIEW status type, it is 1 else Null.
AUDIT_RESULT_ID	NUMBER	22	22	Out of the box, the value is a foreign key to ODM_AUDIT_RESULT_D.ENTRY_ID column
CUSTOMER_ID	NUMBER	22	22	ID of Customer object
PLAN_AUDIT_DATE	DATE	7		Audit Date of the QCR
PREVENTATIVE_ACTION	VARCHAR2	2046		Preventive action of QCR
ROOT_CAUSE_ANALYSIS	VARCHAR2	2046		Root cause of Audit
SUPPLIER	VARCHAR2	255		Supplier ID
PRODUCT_LINES	VARCHAR2	255		Out of the box, the value is a foreign key to ODM_PRODUCT_LINES_D.ENTRY_ID column
ROUTE_DATE	DATE	7		Date Audit was changed to Review status
CREATE_USER_ID	NUMBER	22	22	Create user ID
ACCEPTACLPROPAGATION	NUMBER	22	22	Accept ACL Propagation Flag.
DELETE_FLAG	NUMBER	22	1	Identify if this is a deleted object. 1-Deleted; 0-Not Deleted
CREATE_DATE	DATE	7		Create date
UPDATE_DATE	DATE	7		Update date
DATE[01-15]_DATE	DATE	7		User defined field(s) of DATE type in PLM.
LIST[01-25]_ID	NUMBER	22	22	User defined field(s) of LIST type in PLM. Foreign Key to <configured List Dimension Table>.ENTRY_ID column. Refer to ODM_LISTDIM_CTL and ODM_DATA_DICTIONARY tables for identifying configured List Dimension table name.

Column	Type	Size	Precision	Comments
MONEYCURRENCY[20-29]	NUMBER	22	4	Stores the Currency Code for the user defined field(s) of MONEY type in PLM
MONEYVALUE[20-29]	NUMBER	22	18	Stores the money value for the user defined field(s) of MONEY type in PLM
MULTILIST[01-15]	VARCHAR2	765		User defined field(s) of MULTILIST type on PLM. Stores comma seperated list of entry IDs from the configured List Dimension table. These comma seperated values are resolved and stored into ODM_<Table Name>_<Column Name>_MAP table.
NUMERIC[01-10]	NUMBER	22		User defined field(s) of NUMERIC type in PLM.
TEXT[01-25]	VARCHAR2	450		User defined field(s) of TEXT type in PLM.

ODM_QCR_AUDIT_ITEM

Column	Type	Size	Precision	Comments
ID	NUMBER	22	22	Unique ID
AUDIT_ID	NUMBER	22	22	ID Of Audit Object
ITEM_ID	NUMBER	22	22	Associated Item ID for Audit
REV_ID	NUMBER	22	22	Revision ID for the Audit
AFFECTED_SITE_ID	NUMBER	22	22	ID of Site object
LOC0[1-10]_ID	NUMBER	22	22	
DELETE_FLAG	NUMBER	22	1	Identify if this is a deleted object. 1-Deleted; 0-Not Deleted
CREATE_DATE	DATE	7		Create date
UPDATE_DATE	DATE	7		Update date
DATE[01-20]_DATE	DATE	7		User defined field(s) of DATE type in PLM.
LIST[01-25]_ID	NUMBER	22	22	User defined field(s) of LIST type in PLM. Foreign Key to <configured List Dimension Table>.ENTRY_ID column. Refer to ODM_LISTDIM_CTL and ODM_DATA_DICTIONARY tables for identifying configured List Dimension table name.
NUMERIC[01-05]	NUMBER	22		User defined field(s) of NUMERIC type in PLM.
TEXT[01-15]	VARCHAR2	150		User defined field(s) of TEXT type in PLM.

ODM_QCR_CAPA

Column	Type	Size	Precision	Comments
ID	NUMBER	22	22	Unique ID
CLASS_ID	NUMBER	22	22	Audit Class ID(4928)
SUBCLASS_ID	NUMBER	22	22	Audit Subclass ID
CAPA_NUMBER	VARCHAR2	90		CAPA Number
CATEGORY_ID	NUMBER	22	22	Out of the box, the value is a foreign key to ODM_QCR_CATEGORY_D.ENTRY_ID column
STATUS_ID	NUMBER	22	22	CAPA Satus
STATUSTYPE_ID	NUMBER	22	22	Out of the box, the value is a foreign key to ODM_STATUS_TYPE_D.ENTRY_ID column

Column	Type	Size	Precision	Comments
ORIGINATOR_ID	NUMBER	22	22	Out of the box, the value is a foreign key to ODM_USERS_OBJ_D.ENTRY_ID column
OWNER_ID	NUMBER	22	22	Out of the box, the value is a foreign key to ODM_QUALITY_ADMIN_OBJ_D.ENTRY_ID column
RELEASE_DATE	DATE	7		CAPA Release Date
DESCRIPTION	VARCHAR2	4000		CAPA Description
REASON	VARCHAR2	4000		Reason for Corrective and preventive action
OBJVERSION	NUMBER	22		Object version Number
SUBMIT_DATE	DATE	7		Submit Date (Quality Change for CAPA)
FLAGS	VARCHAR2	32		0 (FALSE)/1 (TRUE) for each position in the flag.
WORKFLOW_ID	NUMBER	22	22	CAPA Workflow ID
FINALCOMPLETE_DATE	DATE	7		Date CAPA was closed.
PROCESS_ID	NUMBER	22	22	NULL if object is at UNASSIGNED, PENDING OR COMPLETE STATUS TYPE
IN_REVIEW_ID	NUMBER	22	22	If the object is at REVIEW status type, it is 1 else Null.
AUDIT_RESULT_ID	NUMBER	22	22	Out of the box, the value is a foreign key to ODM_AUDIT_RESULT_D.ENTRY_ID column
CUSTOMER_ID	NUMBER	22	22	ID of Customer object
PLAN_AUDIT_DATE	DATE	7		Audit Date of the QCR
PREVENTATIVE_ACTION	VARCHAR2	2046		Preventive action of QCR
ROOT_CAUSE_ANALYSIS	VARCHAR2	2046		Root cause of CAPA
SUPPLIER	VARCHAR2	255		Supplier ID
PRODUCT_LINES	VARCHAR2	255		Out of the box, the value is a foreign key to ODM_PRODUCT_LINES_D.ENTRY_ID column
ROUTE_DATE	DATE	7		Date CAPA was changed to Review status
CREATE_USER_ID	NUMBER	22	22	Create user ID
ACCEPTACLPROPAGATION	NUMBER	22	22	Accept ACL Propagation Flag.
DELETE_FLAG	NUMBER	22	1	Identify if this is a deleted object. 1-Deleted; 0-Not Deleted
CREATE_DATE	DATE	7		Create date
UPDATE_DATE	DATE	7		Update date
DATE[01-15]_DATE	DATE	7		User defined field(s) of DATE type in PLM.
LIST[01-25]_ID	NUMBER	22	22	User defined field(s) of LIST type in PLM. Foreign Key to <configured List Dimension Table>.ENTRY_ID column. Refer to ODM_LISTDIM_CTL and ODM_DATA_DICTIONARY tables for identifying configured List Dimension table name.
MONEYCURRENCY[20-29]	NUMBER	22	4	Stores the Currency Code for the user defined field(s) of MONEY type in PLM
MONEYVALUE[20-29]	NUMBER	22	18	Stores the money value for the user defined field(s) of MONEY type in PLM
MULTILIST[01-15]	VARCHAR2	765		User defined field(s) of MULTILIST type on PLM. Stores comma separated list of entry IDs from the configured List Dimension table. These comma separated values are resolved and stored into ODM_<Table Name>_<Column Name>_MAP table.
NUMERIC[01-10]	NUMBER	22		User defined field(s) of NUMERIC type in PLM.

Column	Type	Size	Precision	Comments
TEXT[01-25]	VARCHAR2	450		User defined field(s) of TEXT type in PLM.

ODM_QCR_CAPA_ITEM

Column	Type	Size	Precision	Comments
ID	NUMBER	22	22	Unique ID
CAPA_ID	NUMBER	22	22	ID Of CAPA Object
ITEM_ID	NUMBER	22	22	Associated Item ID for CAPA
REV_ID	NUMBER	22	22	Revision ID for CAPA
AFFECTED_SITE_ID	NUMBER	22	22	ID of Site object
LOC[01-10]_ID	NUMBER	22	22	
DELETE_FLAG	NUMBER	22	1	Identify if this is a deleted object. 1-Deleted; 0-Not Deleted
CREATE_DATE	DATE	7		Create date
UPDATE_DATE	DATE	7		Update date
DATE[01-20]_DATE	DATE	7		User defined field(s) of DATE type in PLM.
LIST[01-25]_ID	NUMBER	22	22	User defined field(s) of LIST type in PLM. Foreign Key to <configured List Dimension Table>.ENTRY_ID column. Refer to ODM_LISTDIM_CTL and ODM_DATA_DICTIONARY tables for identifying configured List Dimension table name.
NUMERIC[01-05]	NUMBER	22		User defined field(s) of NUMERIC type in PLM.
TEXT[01-15]	VARCHAR2	150		User defined field(s) of TEXT type in PLM.

ODM_REFDESIG

Column	Type	Size	Precision	Comments
ID	NUMBER	22	22	Unique ID
BOM_ID	NUMBER	22	22	BOM ID
LABEL	VARCHAR2	120		Reference designator label
DELETE_FLAG	NUMBER	22	1	Identify if this is a deleted object. 1-Deleted; 0-Not Deleted
CREATE_DATE	DATE	7		Create date
UPDATE_DATE	DATE	7		Update date

ODM_RELATIONSHIP

Column	Type	Size	Precision	Comments
REV_ID_VER_NUM	NUMBER	22		The version No of the Revision of the object

Column	Type	Size	Precision	Comments
ID	NUMBER	22	22	Unique ID Data Validation: Not Null
REL_TYPE	NUMBER	22		Type of Relationship. The Values can be from 1 to 4. 1 - RELATIONSHIPTYPE_AFFECTEDBY 2 - RELATIONSHIPTYPE_AFFECT 3 - RELATIONSHIPTYPE_REFERENCE 4 - RELATIONSHIPTYPE_RELATEDPSR
OBJECT1	NUMBER	22		The object type that triggers the event
OBJECT2	NUMBER	22		The object that is effected by the trigger
CTR_OBJID	NUMBER	22	22	The object that triggers the event
CTR_OBJTYPE	NUMBER	22		The object type that triggers the event
EFF_OBJID	NUMBER	22	22	The object Id that is effected by the trigger
EFF_OBJTYPE	NUMBER	22		The object type that effected by the trigger
SUBSCRIPTION	NUMBER	22		Subscription for this event
CRITERIAMET_ID	NUMBER	22	22	Flag that indicates if the criteria has been met: 1 for yes, 0 for no
AUTO_NUM_SRC_NODE_ID	NUMBER	22	22	Sequence No for the Relationship
REQUIRED_FLG	NUMBER	22	1	Required flag
DELETE_FLAG	NUMBER	22	1	Identify if this is a deleted object. 1-Deleted; 0-Not Deleted
CREATE_DATE	DATE	7		Create date
UPDATE_DATE	DATE	7		Update date
DATE[01-10]_DATE	DATE	7		User defined field(s) of DATE type in PLM.
LIST[01-10]_ID	NUMBER	22	22	User defined field(s) of LIST type in PLM. Foreign Key to <configured List Dimension Table>.ENTRY_ID column. Refer to ODM_LISTDIM_CTL and ODM_DATA_DICTIONARY tables for identifying configured List Dimension table name.
TEXT[01-10]	VARCHAR2	150		User defined field(s) of TEXT type in PLM.

ODM_REV

Column	Type	Size	Precision	Comments
ID	NUMBER	22	22	Unique ID
ITEM_ID	NUMBER	22	22	Item ID
CHANGE_ID	NUMBER	22	22	ID of an item for its individual change
REV_NUMBER	VARCHAR2	120		Revision Number
OLD_REVNUMBER	VARCHAR2	120		Previous Revision number
OBSOLETE_DATE	DATE	7		Date previous rev is obsoleted
EFFECTIVE_DATE	DATE	7		Date current rev is effective
FUNCTION_ID	NUMBER	22	22	Function of revision
INCORP_DATE	DATE	7		Date revision is incorporated
RELEASE_TYPE	NUMBER	22	10	Revision lifecycle
LOC[01-10]_ID	NUMBER	22	22	
RELEASED	NUMBER	22	5	Item released or nor.If yes then 1 or 0
INCORPORATED_ID	NUMBER	22	5	
LATEST_FLAG	NUMBER	22	5	
RELEASE_DATE	DATE	7		Item Release date
FLAGS	VARCHAR2	96		0 (FALSE)/1 (TRUE) for each position in the flag.
OLD_RELEASE_TYPE	NUMBER	22	10	
SITE	NUMBER	22		Item Site
DESCRIPTION	VARCHAR2	2160		The NUMERICnn fields are system and user defined fields that extend this object. The fields definition is in the property table.
WEIGHT	NUMBER	22		
NORMALIZED_WEIGHT	NUMBER	22		Normalized Weight
WEIGHT_UOM	NUMBER	22	10	
NOTES01	VARCHAR2	4000		
OLD_DESCRIPTION	VARCHAR2	2160		
COMPLIANCY_ID	NUMBER	22	22	
COMPLIANCY_CALC_DATE	DATE	7		The date when Compliancy has been calculated.
DELETE_FLAG	NUMBER	22	1	Identify if this is a deleted object. 1-Deleted; 0-Not Deleted
CREATE_DATE	DATE	7		Create date
UPDATE_DATE	DATE	7		Update date
DATE[01-20]_DATE	DATE	7		User defined field(s) of DATE type in PLM.
LIST[01-25]_ID	NUMBER	22	10	User defined field(s) of LIST type in PLM. Foreign Key to <configured List Dimension Table>.ENTRY_ID column. Refer to ODM_LISTDIM_CTL and ODM_DATA_DICTIONARY tables for identifying configured List Dimension table name.
MONEYCURRENCY[01-05]	NUMBER	22	4	Stores the Currency Code for the user defined field(s) of MONEY type in PLM
MONEYVALUE[01-05]	NUMBER	22	18	Stores the money value for the user defined field(s) of MONEY type in PLM
NUMERIC[01-05]	NUMBER	22		User defined field(s) of NUMERIC type in PLM.

Column	Type	Size	Precision	Comments
TEXT[01-15]	VARCHAR2	150		User defined field(s) of TEXT type in PLM.

ODM_SIGNOFF

Column	Type	Size	Precision	Comments
ID	NUMBER	22	22	Unique ID Data Validation: Not Null
CHANGE_ID	NUMBER	22	22	ID of the routable object Data Validation: NOT NULL - NOT 0
PROCESS_ID	NUMBER	22	22	ID of the workflow process corresponding to this signoff Data Validation: NULL IS OK
USER_ASSIGNED_ID	NUMBER	22	22	ID of user/dept/group required to sign off Data Validation: NOT NULL -NOT 0
USER_SIGNED_ID	NUMBER	22	22	ID of user/dept/group who actually signed off Data Validation: NOT NULL -NOT 0
REQUIRED_ID	NUMBER	22	22	Type of user to do the signoff
SIGNOFF_STATUS_ID	NUMBER	22	22	Signoff Status Data Validation: Not Null -0 - 9 Only (List Of State) Signoff_Pending= 0; // Request Needs Attention Signoff_Cancel = 1; // Request Dismissed Signoff_Approve = 2; // Request Approved Signoff_Reject = 3; // Request Rejected Signoff_Info = 4; // Info Only, No Response Necessary Signoff_Return= 5; // Returned To Originator After Route Signoff_Removed = 6; // Request Removed Permanently Signoff_Futureadhoc = 7; // Future Adhoc Approver, No Notification Yet. Signoff_Futureeobs = 8; // Future Adhoc Observer, No Notification Yet. Signoff_Transferauth = 9; // Approvers Transfer Authority User.
HISTORY_ID	NUMBER	22	22	Change history ID
FLAGS	VARCHAR2	32		Internal used
SIGNOFF_HISTORYID	NUMBER	22		History ID
USER_NAME_ASSIGNED	VARCHAR2	520		Add this column in case user changes his/her name.
USER_NAME_SIGNED	VARCHAR2	520		Add this column in case user changes his/her name.
VERSION	NUMBER	22		Version No.
DELETE_FLAG	NUMBER	22	1	Identify if this is a deleted object. 1-Deleted; 0-Not Deleted
CREATE_DATE	DATE	7		Create date
UPDATE_DATE	DATE	7		Update date

ODM_SIMPLE_RELATION

Column	Type	Size	Precision	Comments
ID	NUMBER	22		
OBJECT1	NUMBER	22		
OBJECT2	NUMBER	22		
CLASS1	NUMBER	22		
CLASS2	NUMBER	22		

Column	Type	Size	Precision	Comments
DELETE_FLAG	NUMBER	22	1	Identify if this is a deleted object. 1-Deleted; 0-Not Deleted
CREATE_DATE	DATE	7		Created On
UPDATE_DATE	DATE	7		Last Updated On

ODM_SITE

Column	Type	Size	Precision	Comments
ID	NUMBER	22	22	Unique Identifier
ORG_ID	NUMBER	22	22	Organization/Supplier No
CONTINENT_ID	NUMBER	22	22	Continent No.
REGION_ID	NUMBER	22	22	Region code
COUNTRY_ID	NUMBER	22	22	Country code
TIME_ZONE	NUMBER	22	10	Time Zone of the Site
NAME	VARCHAR2	384		Site Name
CURRENCY	NUMBER	22	4	Currency code applicable to the Site
ERP_CODE	VARCHAR2	90		ERP code of the site
SHIPPING_ADDRESS1	VARCHAR2	720		Shipping Address Line 1
SHIPPING_ADDRESS2	VARCHAR2	720		Shipping Address Line 2
SHIPPING_ADDRESS3	VARCHAR2	720		Shipping Address Line 3
COUNTRY	VARCHAR2	384		Country code
CITY	VARCHAR2	384		City
STATE	VARCHAR2	384		State
PHONE1	VARCHAR2	300		Phone No.
PHONE2	VARCHAR2	300		Alternate Phone No.
POSTAL_CODE	VARCHAR2	60		Local postal clde
FAX	VARCHAR2	300		Fax
CREATED_BY	NUMBER	22	12	User who created this record
MODIFIED_BY	NUMBER	22	12	User who modified this record
DELETE_FLAG	NUMBER	22	1	Identify if this is a deleted object. 1-Deleted; 0-Not Deleted
CREATE_DATE	DATE	7		Create date
UPDATE_DATE	DATE	7		Update date

ODM_SITES

Column	Type	Size	Precision	Comments
ID	NUMBER	22	22	Unique Identifier
CLASS_ID	NUMBER	22	22	Site Class ID
SUBCLASS_ID	NUMBER	22	22	Out of the box, the value is a foreign key to ODM_SITES_TYPE_OBJ_D.ENTRY_ID column
ADDRESS	VARCHAR2	2046		Address

Column	Type	Size	Precision	Comments
CITY	VARCHAR2	150		City
CONTACT_ID	NUMBER	22	22	Out of the box, the value is a foreign key to ODM_USERS_OBJ_D.ENTRY_ID column
COUNTRY_ID	NUMBER	22	22	Out of the box, the value is a foreign key to ODM_COUNTRY_D.ENTRY_ID column
POSTAL_CODE	VARCHAR2	256		Local postal code
EMAIL	VARCHAR2	256		Email Address
FAX	VARCHAR2	256		Fax
STATUS_ID	NUMBER	22	22	Status
NAME	VARCHAR2	300		Site Name
PHONE	VARCHAR2	256		Phone
URL	VARCHAR2	256		Web Address
ERP_CODE_ID	NUMBER	22	22	Out of the box, the value is a foreign key to ODM_SITE_ERP_D.ENTRY_ID column
AML_ON_BUY_ID	NUMBER	22	22	Out of the box, the value is a foreign key to ODM_AML_ON_BUY_D.ENTRY_ID column
SITE_AML_ALLOWED_ID	NUMBER	22	22	Out of the box, the value is a foreign key to ODM_AML_D.ENTRY_ID column
COLOR_ID	NUMBER	22	22	Color code of the Site
OBJVERSION	NUMBER	22		Object Version
PROVINCE	VARCHAR2	512		Sites Coverage Area
FLAGS	VARCHAR2	32		
GEOGRAPHY_ID	NUMBER	22	22	Out of the box, the value is a foreign key to ODM_LOCATION_D.ENTRY_ID column
CREATE_USER_ID	NUMBER	22	22	Create user ID
ACCEPTACLPROPAGATION	NUMBER	22	22	Accept ACL Propagation Flag.
DELETE_FLAG	NUMBER	22	1	Identify if this is a deleted object. 1-Deleted; 0-Not Deleted
CREATE_DATE	DATE	7		Create date
UPDATE_DATE	DATE	7		Update date
DATE[01-15]_DATE	DATE	7		User defined field(s) of DATE type in PLM.
LIST[01-25]_ID	NUMBER	22	22	User defined field(s) of LIST type in PLM. Foreign Key to <configured List Dimension Table>.ENTRY_ID column. Refer to ODM_LISTDIM_CTL and ODM_DATA_DICTIONARY tables for identifying configured List Dimension table name.
MONEYCURRENCY[20-29]	NUMBER	22	4	Stores the Currency Code for the user defined field(s) of MONEY type in PLM
MONEYVALUE[20-29]	NUMBER	22	18	Stores the money value for the user defined field(s) of MONEY type in PLM
MULTILIST[01-15]	VARCHAR2	765		User defined field(s) of MULTILIST type on PLM. Stores comma separated list of entry IDs from the configured List Dimension table. These comma separated values are resolved and stored into ODM_<Table Name>_<Column Name>_MAP table.
NUMERIC[01-10]	NUMBER	22		User defined field(s) of NUMERIC type in PLM.
TEXT[01-25]	VARCHAR2	450		User defined field(s) of TEXT type in PLM.

ODM_SUBSCRIPTIONS

Column	Type	Size	Precision	Comments
ID	NUMBER	22	22	
SUBSCRIBER_ID	NUMBER	22	22	
SUBSCRIBER_CLASS	NUMBER	22	22	
ACTION_EVENT	NUMBER	22	22	
ACTION_EVENT_ID	NUMBER	22	22	
PUBLISHER_ID	NUMBER	22	22	
PUBLISHER_CLASS	NUMBER	22	22	
TRIGGER_EVENTS	VARCHAR2	4000		
TRIGGER_EVENT_IDS	VARCHAR2	765		
ENABLE_FLAG	NUMBER	22	10	
DELETE_FLAG	NUMBER	22	1	Identify if this is a deleted object. 1-Deleted; 0-Not Deleted
CREATE_DATE	DATE	7		Created On
UPDATE_DATE	DATE	7		Last Updated On

ODM_TEAM

Column	Type	Size	Precision	Comments
ACTIVITY_ID	NUMBER	22	22	ID of associated Activity
USER_ID	NUMBER	22	22	ID of user added to team of the Activity
RESOURCE_TYPE	NUMBER	22	1	Specifies User or User group. 0 (User)/1(User Group)
FROM_POOL_ID	NUMBER	22	22	Resource Pool ID from which user has been assigned to Team
PERCENT_ALLOC	NUMBER	22		Percentage allocation for the user on the activity
ID	NUMBER	22	22	Specifies if user is a resource of the activity or not. 0 (Not a Resource) / 1(Resource)
ISRESOURCE_ID	NUMBER	22	22	Specifies if user has rejected the assignment on the activity 0 (Not rejected) / 1(Rejected)
REJECTED_FLAG_ID	NUMBER	22	1	Specifies if user has rejected the assignment on the activity 0 (Not rejected) / 1(Rejected)
ACTUAL_HOURS	NUMBER	22		Actual hours to work
LABOR_RATE_VALUE	NUMBER	22	18	Labour Rate Value
LABOR_RATE_CURRENCY	NUMBER	22		Labour Rate in term of currencies
DELETE_FLAG	NUMBER	22	1	Identify if this is a deleted object. 1-Deleted; 0-Not Deleted
CREATE_DATE	DATE	7		Create Date
UPDATE_DATE	DATE	7		Update Date

ODM_TEAM_BASELINE

Column	Type	Size	Precision	Comments
ACTIVITY_ID	NUMBER	22	22	ID of associated activity
REV	NUMBER	22		Activity Revision
USER_ID	NUMBER	22	22	ID of user added to team of the activity
RESOURCE_TYPE	NUMBER	22	1	Specifies User or User group. 0 (User)/1(User Group)
FROM_POOL	NUMBER	22		Resource Pool ID from which user has been assigned to Team
PERCENT_ALLOC	NUMBER	22		Percentage allocation for the user on the activity
ISRESOURCE	NUMBER	22		Specifies if user is a resource of the activity or not. 0 (Not a Resource) / 1(Resource)
REJECTED_FLAG	NUMBER	22	1	Specifies if user has rejected the assignment on the activity 0 (Not rejected) / 1(Rejected)
ACTUAL_HOURS	NUMBER	22		Actual HOURS to work.
LABOR_RATE_VALUE	NUMBER	22	18	Labour Rate Value
LABOR_RATE_CURRENCY	NUMBER	22		Labour Rate in term of currencies
USERROLES	VARCHAR2	4000		Roles assigned to the User
DELETE_FLAG	NUMBER	22	1	Identify if this is a deleted object. 1-Deleted; 0-Not Deleted
CREATE_DATE	DATE	7		Create date
UPDATE_DATE	DATE	7		Update date

ODM_USER_ASSIGNMENT

Column	Type	Size	Precision	Comments
ID	NUMBER	22	22	User assignment ID
OBJ_ID	NUMBER	22	22	Object ID
CLASS_ID	NUMBER	22	22	Object's class ID except 11640 for roles
USER_ID	NUMBER	22	22	User ID
ASSIGNEE_TYPE	NUMBER	22		Assignee type
DELETE_FLAG	NUMBER	22	1	Identify if this is a deleted object. 1-Deleted; 0-Not Deleted
CREATE_DATE	DATE	7		Create date
UPDATE_DATE	DATE	7		Update date

ODM_USER_GROUP

Column	Type	Size	Precision	Comments
ID	NUMBER	22	22	User group ID
CLASS_ID	NUMBER	22	22	Class ID
SUBCLASS_ID	NUMBER	22	22	Out of the box, the value is a foreign key to ODM_USER_GROUP_TYPE_OBJ_D.ENTRY_ID column

Column	Type	Size	Precision	Comments
DESCRIPTION	VARCHAR2	256		Description
NAME	VARCHAR2	256		Name
GLOBAL_PERSONAL_ID	NUMBER	22	22	Out of the box, the value is a foreign key to ODM_USER_GROUP_TYPE_D.ENTRY_ID column
ENABLED_ID	NUMBER	22	22	Enabled
MAX_USERS	NUMBER	22		Max users for the group
ALLOWESCALATION_ID	NUMBER	22	22	Allow escalations
CHANGEANALYSTLIST_ID	NUMBER	22	22	Change analyst no
COMPENGRLIST_ID	NUMBER	22	22	Component Engr No
PARTNERLIST_ID	NUMBER	22	22	Partner list
OBJVERSION	NUMBER	22		Object Version
FLAGS	VARCHAR2	32		Internal used
QUALITYANALYSTLIST_ID	NUMBER	22	22	Quality analyst no
QUALITYADMINLIST_ID	NUMBER	22	22	Quality admin no
PRICEADMINLIST_ID	NUMBER	22	1	Price admin no
LICENSED_USERS	NUMBER	22		No of licensed users
LICENSES_CONS	NUMBER	22		Consolidiated Licenses
LICENSES_AVAIL	NUMBER	22		Available Licenses
OWNER_ID	NUMBER	22	22	Out of the box, the value is a foreign key to ODM_USERS_OBJ_D.ENTRY_ID column
RESOURCE_POOL_ID	NUMBER	22	22	Resource pool ID
PROGRAM_TYPE	VARCHAR2	400		Out of the box, the value is a foreign key to ODM_PROGRAM_TYPE_D.ENTRY_ID column
REGION	VARCHAR2	400		Out of the box, the value is a foreign key to ODM_REGION_LIST_D.ENTRY_ID column
DIVISION	VARCHAR2	400		Out of the box, the value is a foreign key to ODM_DIVISION_D.ENTRY_ID column
PRODUCT_LINE	VARCHAR2	400		Out of the box, the value is a foreign key to ODM_PROD_LINE_D.ENTRY_ID column
CUSTOMER	VARCHAR2	400		Out of the box, the value is a foreign key to ODM_CUSTOMER_D.ENTRY_ID column
LAUNCH_YEAR	VARCHAR2	400		Out of the box, the value is a foreign key to ODM_LAUNCH_YEAR_LIST_D.ENTRY_ID column
LABOR_RATE_VALUE	NUMBER	22	18	Labor rate value
LABOR_RATE_CURRENCY	NUMBER	22	4	Labour Rate in term of Currencies
OVERHEAD_RATE_VALUE	NUMBER	22	18	Over head rate
OVERHEAD_RATE_CURRENCY	NUMBER	22	4	Over head rate in term of Currencies
BILL_RATE_VALUE	NUMBER	22	18	Bill rate value
BILL_RATE_CURRENCY	NUMBER	22	4	Bill rate currency
CATEGORY7	VARCHAR2	400		Out of the box, the value is a foreign key to ODM_CATEGORY7_LIST_D.ENTRY_ID column
CATEGORY8	VARCHAR2	400		Out of the box, the value is a foreign key to ODM_CATEGORY8_LIST_D.ENTRY_ID column
CATEGORY9	VARCHAR2	400		Out of the box, the value is a foreign key to ODM_CATEGORY9_LIST_D.ENTRY_ID column
CATEGORY10	VARCHAR2	400		Out of the box, the value is a foreign key to ODM_CATEGORY10_LIST_D.ENTRY_ID column
REPOSITORYID	VARCHAR2	200		

Column	Type	Size	Precision	Comments
CREATE_USER_ID	NUMBER	22	22	Create user ID
ACCEPTACLPROPAGATION	NUMBER	22	22	Accept ACL Propagation Flag.
DELETE_FLAG	NUMBER	22	1	Identify if this is a deleted object. 1-Deleted; 0-Not Deleted
CREATE_DATE	DATE	7		Create date
UPDATE_DATE	DATE	7		Update date
DATE[01-15]_DATE	DATE	7		User defined field(s) of DATE type in PLM.
LIST[01-25]_ID	NUMBER	22	22	User defined field(s) of LIST type in PLM. Foreign Key to <configured List Dimension Table>.ENTRY_ID column. Refer to ODM_LISTDIM_CTL and ODM_DATA_DICTIONARY tables for identifying configured List Dimension table name.
MONEYCURRENCY[20-29]	NUMBER	22	4	Stores the Currency Code for the user defined field(s) of MONEY type in PLM
MONEYVALUE[20-29]	NUMBER	22	18	Stores the money value for the user defined field(s) of MONEY type in PLM
MULTILIST[01-15]	VARCHAR2	765		User defined field(s) of MULTILIST type on PLM. Stores comma seperated list of entry IDs from the configured List Dimension table. These comma seperated values are resolved and stored into ODM_<Table Name>_<Column Name>_MAP table.
NUMERIC[01-10]	NUMBER	22		User defined field(s) of NUMERIC type in PLM.
TEXT[01-25]	VARCHAR2	450		User defined field(s) of TEXT type in PLM.

ODM_USER_ROLE

Column	Type	Size	Precision	Comments
ID	NUMBER	22	22	Role ID
NAME	VARCHAR2	1800		Role name
DESCRIPTION	VARCHAR2	1800		Description
DELETE_FLAG	NUMBER	22	1	Identify if this is a deleted object. 1-Deleted; 0-Not Deleted
CREATE_DATE	DATE	7		Create date
UPDATE_DATE	DATE	7		Update date

ODM_USER_SITE

Column	Type	Size	Precision	Comments
ID	NUMBER	22	22	Unique ID
USER_ID	NUMBER	22	22	User ID
SITE_ID	NUMBER	22	22	Site ID
CREATED_BY	NUMBER	22	12	User who craeated the site record
MODIFIED_BY	NUMBER	22	12	User who last modified the site record

Column	Type	Size	Precision	Comments
DELETE_FLAG	NUMBER	22	1	Identify if this is a deleted object. 1-Deleted; 0-Not Deleted
CREATE_DATE	DATE	7		Create date
UPDATE_DATE	DATE	7		Update date

ODM_USER_USAGE_HISTORY

Column	Type	Size	Precision	Comments
ID	VARCHAR2	128		Unique ID
USERNAME	VARCHAR2	80		The text user name
HOST	VARCHAR2	80		Host Machine name
LOGIN_TIME	DATE	7		The time this user logged into the system.
LOGOUT_TIME	DATE	7		The time the user logged out fo the system.
DELETE_FLAG	NUMBER	22	1	Identify if this is a deleted object. 1-Deleted; 0-Not Deleted
CREATE_DATE	DATE	7		Create date
UPDATE_DATE	DATE	7		Update date

ODM_VERSION

Column	Type	Size	Precision	Comments
ID	NUMBER	22	22	Unique ID
ATTACH_ID	NUMBER	22		ID of File Folder object
VERSION_NUM	NUMBER	22		The version of the File Folder
FLAGS	VARCHAR2	32		0 (FALSE)/1 (TRUE) for each position in the flag.
LIFECYCLEPHASE_ID	NUMBER	22	22	File Folder Lifecycle Phase
CHECKIN_USER	NUMBER	22		Check-In User No
LABEL	VARCHAR2	150		Label of that Attachment
DELETE_FLAG	NUMBER	22	1	Identify if this is a deleted object. 1-Deleted; 0-Not Deleted
CREATE_DATE	DATE	7		Create date
UPDATE_DATE	DATE	7		Update date

ODM_VERSION_FILE_MAP

Column	Type	Size	Precision	Comments
ID	NUMBER	22	22	Unique ID
VERSION_ID	NUMBER	22	22	Version ID
PATH	VARCHAR2	1024		Relative path of the file
DESCRIPTION	VARCHAR2	300		File description
LAST_VIEWED	DATE	7		Last viewed date

Column	Type	Size	Precision	Comments
FLAGS	VARCHAR2	32		0 (FALSE)/1 (TRUE) for each position in the flag.
FILE_ID	NUMBER	22	22	Attachment File No
CHECKOUT_LOCATION	VARCHAR2	3000		Check-out Location
DELETE_FLAG	NUMBER	22	1	Identify if this is a deleted object. 1-Deleted; 0-Not Deleted
CREATE_DATE	DATE	7		Create date
UPDATE_DATE	DATE	7		Update date
DATE[01-05]_DATE	DATE	7		User defined field(s) of DATE type in PLM.
LIST[01-05]_ID	NUMBER	22	22	User defined field(s) of LIST type in PLM. Foreign Key to <configured List Dimension Table>.ENTRY_ID column. Refer to ODM_LISTDIM_CTL and ODM_DATA_DICTIONARY tables for identifying configured List Dimension table name.
MULTILIST[01-03]	VARCHAR2	255		User defined field(s) of MULTILIST type on PLM. Stores comma seperated list of entry IDs from the configured List Dimension table. These comma seperated values are resolved and stored into ODM_<Table Name>_<Column Name>_MAP table.
NUMERIC[01-05]	NUMBER	22		User defined field(s) of NUMERIC type in PLM.
TEXT[01-07]	VARCHAR2	150		User defined field(s) of TEXT type in PLM.

ODM_WORKFLOW_METADATA

Column	Type	Size	Precision	Comments
ID	NUMBER	22	22	Workflow step ID
WORKFLOW_ID	NUMBER	22	22	Workflow Unique ID
WORKFLOW_NAME	VARCHAR2	765		Workflow name
PARENTID	NUMBER	22	22	Parent ID of the workflow step, i.e., workflow type.
DESCRIPTION	VARCHAR2	1530		Workflow status description
OBJTYPE	NUMBER	22	5	Reserved
INHERIT	NUMBER	22	10	Workflow state ID from which this workflow state id is inherited.
HELPIID	NUMBER	22	10	Reserved.
VERSION	NUMBER	22		Version of workflow
NAME	VARCHAR2	765		Name of the workflow status
CREATE_DATE	DATE	7		Created date
UPDATE_DATE	DATE	7		Updated date
DD_FLAG	NUMBER	1		Flag to update Data Dictionary

ODM_WORKFLOW_PROCESS

Column	Type	Size	Precision	Comments
ID	NUMBER	22	22	Unique ID
CHANGE_ID	NUMBER	22	22	ID of the routable object

ORDER_BY	NUMBER	22		The order of the status in its workflow. NULL if the status type = CANCEL or HOLD
WORKFLOW_ID	NUMBER	22	22	ID of the workflow
STATE_ID	NUMBER	22	22	ID of the from status
STATUSTYPE_ID	NUMBER	22	22	The status type of the STATE Data Validation: NOT NULL -Supported Status Type
NEXT_STATE_ID	NUMBER	22	22	ID of the next status
NEXT_STATUSTYPE_ID	NUMBER	22	22	The status type of the NEXT_STATE Data Validation: NOT NULL -Supported Status Type
CHANGED_BY	NUMBER	22		ID of user who changed the status of object. NULL if it is auto promoted
CHANGED_ON	DATE	7		Changed date
LOCAL_DATE	DATE	7		Local client date action was taken
TIMEZONE	NUMBER	22		Timezone of the local client date action was taken
PROCESS_FLAGS	VARCHAR2	32		0 (FALSE)/1 (TRUE) for each position in the flag.
STATE_CODE_ID	NUMBER	22	22	0 for current, 1 for not completed, 2 for complete, 3 for step of return, 4 for hidden
CHANGED_BY_USERNAME	VARCHAR2	520		Changed User name
DELETE_FLAG	NUMBER	22	1	Identify if this is a deleted object. 1-Deleted; 0-Not Deleted
CREATE_DATE	DATE	7		Create date
UPDATE_DATE	DATE	7		Update date

PARAMETER

Column	Type	Size	Precision	Comments
START_DATE	DATE	7		ETL start date
START_TIME	TIMESTAMP(6)	11		ETL start time
REFRESH_INTERVAL	NUMBER	22		ETL refresh interval
FULL_LOAD	CHAR	1		ETL Full vs. Incremental control parameter: 'Y' - extracts and loads complete dataset every ETL run. 'N' (default) - extracts and loads only the changed data after the initial full extract and load. NULL - extracts and loads complete dataset for one consecutive ETL run after the change to NULL.
DEBUG_MODE	NUMBER	22		Enables logging of debug messages for PL/SQL procedures and functions: 0 (default) - captures error messages; 1 - captures detailed debug messages
EMAIL	VARCHAR2	1000		EMAIL address for ETL run Status notification
EXCH_SERVER	VARCHAR2	100		SMTP server name for sending emails when ETL run completes successfully or fails
PPM	VARCHAR2	1		Flag to enable ETL of Agile PLM Product Portfolio Management data into target Data Mart. 'Y' - enable; 'N' - disabled
PQM	VARCHAR2	1		Flag to enable ETL of Agile PLM Product Quality Management data into target Data Mart. 'Y' - enable; 'N' - disabled
PC	VARCHAR2	1		Flag to enable ETL of Agile PLM Product Collaboration data into target Data Mart. 'Y' - enable; 'N' - disabled

VERSION

Column	Type	Size	Precision	Comments
PLM	VARCHAR2	20		Version information about PLM
OS	VARCHAR2	50		Version information about OS
DATABASE	VARCHAR2	100		Version information about Database server
DATAMART	VARCHAR2	20		Version information about Datamart
BUILD	NUMBER	22		BUILD number