



BEA WebLogic Enterprise

Using Request-Level Interceptors

WebLogic Enterprise 5.1
Document Edition 5.1
May 2000

Copyright

Copyright © 2000 BEA Systems, Inc. All Rights Reserved.

Restricted Rights Legend

This software and documentation is subject to and made available only pursuant to the terms of the BEA Systems License Agreement and may be used or copied only in accordance with the terms of that agreement. It is against the law to copy the software except as specifically allowed in the agreement. This document may not, in whole or in part, be copied, photocopied, reproduced, translated, or reduced to any electronic medium or machine-readable form without prior consent, in writing, from BEA Systems, Inc.

Use, duplication or disclosure by the U.S. Government is subject to restrictions set forth in the BEA Systems License Agreement and in subparagraph (c)(1) of the Commercial Computer Software-Restricted Rights Clause at FAR 52.227-19; subparagraph (c)(1)(ii) of the Rights in Technical Data and Computer Software clause at DFARS 252.227-7013, subparagraph (d) of the Commercial Computer Software--Licensing clause at NASA FAR supplement 16-52.227-86; or their equivalent.

Information in this document is subject to change without notice and does not represent a commitment on the part of BEA Systems, Inc. THE SOFTWARE AND DOCUMENTATION ARE PROVIDED "AS IS" WITHOUT WARRANTY OF ANY KIND INCLUDING WITHOUT LIMITATION, ANY WARRANTY OF MERCHANTABILITY OR FITNESS FOR A PARTICULAR PURPOSE. FURTHER, BEA Systems, Inc. DOES NOT WARRANT, GUARANTEE, OR MAKE ANY REPRESENTATIONS REGARDING THE USE, OR THE RESULTS OF THE USE, OF THE SOFTWARE OR WRITTEN MATERIAL IN TERMS OF CORRECTNESS, ACCURACY, RELIABILITY, OR OTHERWISE.

Trademarks or Service Marks

BEA, BEA Builder, BEA Jolt, BEA Manager, BEA MessageQ, BEA Tuxedo, BEA TOP END, BEA WebLogic, and ObjectBroker are registered trademarks of BEA Systems, Inc. BEA elink, BEA eSolutions, BEA TAP, BEA WebLogic Commerce Server, BEA WebLogic Enterprise, BEA WebLogic Express, BEA WebLogic Personalization Server, BEA WebLogic Server, Java Enterprise Tuxedo and WebLogic Enterprise Connectivity are trademarks of BEA Systems, Inc.

All other company names may be trademarks of the respective companies with which they are associated.

Using Request-Level Interceptors

Document Edition	Date	Software Version
5.1	May 2000	BEA WebLogic Enterprise 5.1

Contents

About This Document

What You Need to Know	x
e-docs Web Site	x
How to Print the Document	x
Related Information	xi
Contact Us!	xi
Documentation Conventions	xii

1. Introduction

Interceptor Architecture	1-2
Capabilities and Limitations	1-4
Execution Flow	1-5
Client-side Execution	1-6
Client-side Exception Handling	1-8
Target-side Execution	1-10
Target-side Exception Handling	1-12
The exception_occurred Method	1-14
About Short-circuit Behavior	1-14
Using Multiple Request-level Interceptors	1-15
Multiple Client-side Interceptors	1-17
Multiple Target-side Interceptors	1-17
Interceptors and Implementation Languages	1-18
Interceptors and Meta-operations	1-19

2. Developing C++ Interceptors

Step 1: Identify the Interfaces of Your WebLogic Enterprise Applications	2-2
Step 2: Write the Interceptor Implementation Code	2-3

Starting the Implementation File	2-3
Initializing the Interceptor at Run Time	2-4
Obtaining the Interface Name from a Request	2-5
Identifying Operations in the Request	2-5
Implementing the Interceptor's Response Operation	2-6
Reading Parameters Out of a Data Input Stream	2-7
Exceptions	2-8
Step3: Create the Interceptor Header File	2-8
Step 4: Build the Interceptor	2-10
Step 5: Test the Interceptor	2-10

3. Developing Java Interceptors

Step 1: Identify the Interfaces of Your WebLogic Enterprise Applications	3-2
Step 2: Write the Interceptor Implementation Code	3-3
Starting the Implementation File	3-3
Implementing the Interceptor's Constructor	3-3
Obtaining the Interface Name from a Request	3-4
Identifying Operations in the Request	3-5
Implementing the Interceptor's Response Operation	3-5
Reading Data Out of a Data Input Stream	3-6
Step 3: Build the Interceptor	3-6
Step 4: Test the Interceptor	3-7
Notes About Implementing Java Interceptors	3-7

4. Deploying the Interceptor

Registering an Interceptor	4-1
Unregistering an Interceptor	4-2
Changing the Order in Which Interceptors are Called	4-3

5. PersonQuery Sample Application

How the PersonQuery Sample Application Works	5-2
PersonQuery Database	5-2
Client Application Command-line Interface	5-3
The OMG IDL for the PersonQuery Sample Application	5-5
Building and Running the PersonQuery Sample Application	5-8
Copying the Files for the PersonQuery Sample Application	5-9

Changing the Protection on PersonQuery Application Files	5-12
Setting the Environment Variables	5-13
Building the Client and Server Applications.....	5-13
Start the PersonQuery Client and Server Applications	5-13
Running the PersonQuery Sample Application	5-14
Stopping the PersonQuery Sample Application.....	5-14
Building and Running the Java RLI Sample Applications.....	5-14
Copying the Files for the Java PersonQuery Samples	5-15
Changing the Protection on PersonQuery Application Files	5-17
Setting the Environment Variables	5-17
Building the Server Application.....	5-18
Start the PersonQuery Client and Server Applications	5-18
Running the PersonQuery Sample Application	5-19
Stopping the PersonQuery Sample Application.....	5-19

6. InterceptorSimp Sample Interceptors

How the PersonQuery Sample Interceptors Work	6-1
Registering and Running the PersonQuery Interceptors	6-2
Registering and Running the C++ Interceptors.....	6-3
Registering and Running the Java Interceptors.....	6-4
Examining the Output of the Interceptors	6-5
Unregistering the Interceptors	6-6
Unregistering the C++ Interceptors.....	6-6
Unregistering the Java Interceptors.....	6-7

7. InterceptorSec Sample Interceptors

How the PersonQuery Sample Interceptors Work	7-1
How the InterceptorSec Target-side Interceptor Works	7-2
Using the SecurityCurrent Object	7-3
Obtaining the SecurityCurrent Object.....	7-3
Creating the List of User Attributes	7-5
Registering and Running the PersonQuery Interceptors	7-9
Registering and Running the C++ Interceptors.....	7-9
Registering and Running the Java Interceptors.....	7-10
Examining the Interceptor Output	7-11

Unregistering the Interceptors	7-13
Unregistering the C++ Interceptors	7-13
Unregistering the Java Interceptors	7-14

8. InterceptorData Sample Interceptors

InterceptorDataClient Interceptor	8-1
InterceptorDataTarget Interceptor	8-2
Implementing the InterceptorData Interceptors	8-3
Registering and Running the InterceptorData Interceptors	8-4
Registering and Running the C++ Interceptors	8-5
Registering and Running the Java Interceptors	8-6
Examining the Interceptor Output	8-7
Unregistering the Interceptors	8-9
Unregistering the C++ Interceptors	8-10
Unregistering the Java Interceptors	8-10

9. Request-Level Interceptor API

Interceptor Hierarchy	9-2
Note on Unused Interfaces	9-2
Interceptors::Interceptor Interface	9-4
C++ Language Mapping	9-4
Java Language Mapping	9-6
RequestLevelInterceptor::	
RequestInterceptor Interface	9-11
C++ Language Mapping	9-12
Java Language Mapping	9-13
RequestLevelInterceptor::	
ClientRequestInterceptor Interface	9-21
C++ Language Mapping	9-22
Java Language Mapping	9-23
RequestLevelInterceptor::	
TargetRequestInterceptor Interface	9-28
C++ Language Mapping	9-29
Java Language Mapping	9-30
CORBA::DataInputStream Interface	9-36
C++ Language Mapping	9-37

Java Language Mapping.....	9-40
A. Starter C++ Interceptor Files	
Starter Implementation Code.....	A-1
Starter Header File Code	A-10
B. Starter Java Implementation File	
Index	



About This Document

This document describes how programmers can implement request-level interceptors in the BEA WebLogic Enterprise™ (WLE) system. Using request-level interceptors is an advanced programming feature of the WebLogic Enterprise system.

This document covers the following topics:

- Chapter 1, “Introduction,” provides an overview of request-level interceptors and how they work in the WebLogic Enterprise environment.
- Chapter 2, “Developing C++ Interceptors,” describes the process for implementing C++ request-level interceptors.
- Chapter 3, “Developing Java Interceptors,” describes the process for implementing Java request-level interceptors.
- Chapter 4, “Deploying the Interceptor,” describes the administration commands you use for registering and unregistering interceptors.
- Chapter 5, “PersonQuery Sample Application,” describes the PersonQuery sample application, which serves as the base application with which the sample interceptors, also provided with the WebLogic Enterprise software, are used.
- Chapter 6, “InterceptorSimp Sample Interceptors,” describes the InterceptorSimp sample interceptor, which collects simple data about requests that go between the PersonQuery client and server applications.
- Chapter 7, “InterceptorSec Sample Interceptors,” describes the InterceptorSec sample interceptor, which is a basic security interceptor.
- Chapter 8, “InterceptorData Sample Interceptors,” describes the two sample interceptors that are specific to the PersonQuery sample application.
- Chapter 9 documents the request-level interceptor API for both C++ and Java.

-
- Appendix A, “Starter C++ Interceptor Files,” contains code that you can use as a starting place for implementing a C++ request-level interceptor.
 - Appendix B, “Starter Java Implementation File,” contains code that you can use as a starting place for implementing a Java request-level interceptor

What You Need to Know

This document is intended for programmers who want to create secure, scalable, transaction-based server applications. It assumes you are familiar with CORBA and the C++ and Java programming languages.

e-docs Web Site

The BEA WebLogic Enterprise product documentation is available on the BEA Systems, Inc. corporate Web site. From the BEA Home page, click the Product Documentation button or go directly to the “e-docs” Product Documentation page at <http://e-docs.bea.com>.

How to Print the Document

You can print a copy of this document from a Web browser, one file at a time, by using the File—>Print option on your Web browser.

A PDF version of this document is available on the WebLogic Enterprise documentation Home page on the e-docs Web site (and also on the documentation CD). You can open the PDF in Adobe Acrobat Reader and print the entire document (or a portion of it) in book format. To access the PDFs, open the WebLogic Enterprise documentation Home page, click the PDF Files button, and select the document you want to print.

If you do not have Adobe Acrobat Reader installed, you can download it for free from the Adobe Web site at <http://www.adobe.com/>.

Related Information

For more information about CORBA, Java 2 Enterprise Edition (J2EE), BEA Tuxedo®, distributed object computing, transaction processing, C++ programming, and Java programming, see the *Bibliography* in the WebLogic Enterprise online documentation.

Contact Us!

Your feedback on the BEA WebLogic Enterprise documentation is important to us. Send us e-mail at **docsupport@bea.com** if you have questions or comments. Your comments will be reviewed directly by the BEA professionals who create and update the WebLogic Enterprise documentation.

In your e-mail message, please indicate that you are using the documentation for the BEA WebLogic Enterprise 5.1 release.

If you have any questions about this version of BEA WebLogic Enterprise, or if you have problems installing and running BEA WebLogic Enterprise, contact BEA Customer Support through BEA WebSUPPORT at www.bea.com. You can also contact Customer Support by using the contact information provided on the Customer Support Card, which is included in the product package.

When contacting Customer Support, be prepared to provide the following information:

- Your name, e-mail address, phone number, and fax number
- Your company name and company address

-
- Your machine type and authorization codes
 - The name and version of the product you are using
 - A description of the problem and the content of pertinent error messages

Documentation Conventions

The following documentation conventions are used throughout this document.

Convention	Item
boldface text	Indicates terms defined in the glossary.
Ctrl+Tab	Indicates that you must press two or more keys simultaneously.
<i>italics</i>	Indicates emphasis or book titles.
monospace text	Indicates code samples, commands and their options, data structures and their members, data types, directories, and filenames and their extensions. Monospace text also indicates text that you must enter from the keyboard. <i>Examples:</i> <pre>#include <iostream.h> void main () the pointer psz chmod u+w * \tux\data\ap .doc tux.doc BITMAP float</pre>
monospace boldface text	Identifies significant words in code. <i>Example:</i> <pre>void commit ()</pre>
<i>monospace italic text</i>	Identifies variables in code. <i>Example:</i> <pre>String <i>expr</i></pre>

Convention	Item
UPPERCASE TEXT	Indicates device names, environment variables, and logical operators. <i>Examples:</i> LPT1 SIGNON OR
{ }	Indicates a set of choices in a syntax line. The braces themselves should never be typed.
[]	Indicates optional items in a syntax line. The brackets themselves should never be typed. <i>Example:</i> buildobjclient [-v] [-o name] [-f file-list]... [-l file-list]...
	Separates mutually exclusive choices in a syntax line. The symbol itself should never be typed.
...	Indicates one of the following in a command line: <ul style="list-style-type: none"> ■ That an argument can be repeated several times in a command line ■ That the statement omits additional optional arguments ■ That you can enter additional parameters, values, or other information The ellipsis itself should never be typed. <i>Example:</i> buildobjclient [-v] [-o name] [-f file-list]... [-l file-list]...
.	Indicates the omission of items from a code example or from a syntax line. The vertical ellipsis itself should never be typed.



1 Introduction

A **request-level interceptor** is a user-written CORBA object that provides a means to insert functionality, such as security or monitoring components, into the invocation path between the client and server components of a WebLogic Enterprise (WLE) application. When you have an interceptor installed and registered with an ORB on a particular machine, the interceptor is involved with all the WebLogic Enterprise applications on that machine. You can use interceptors to insert any additional functionality into the invocation path of an object invocation, at either the client, or the server, or both ends of the invocation.

Request-level interceptors are not usually part of a typical WebLogic Enterprise environment. Implementing them is considered an advanced programming task.

The WebLogic Enterprise system supports two categories of interceptors:

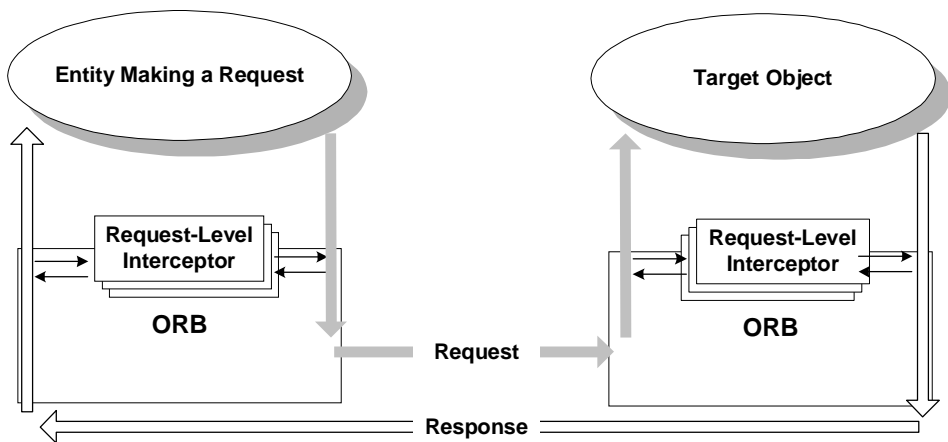
- Client-side interceptors, which are called by the ORB at the client side of an invocation and are run in the process of an entity making a request. Client-side interceptors inherit from the `ClientRequestInterceptor` class.
- Target-side interceptors, which are called by the ORB at the target side of an invocation and are run with the target application process. The target of an invocation may be a WebLogic Enterprise server application or joint client/server application. Target-side interceptors inherit from the `TargetRequestInterceptor` class.

The WebLogic Enterprise system is very flexible about where you can install and use interceptors, with respect to the relative location of the client and target objects. It is transparent to a client application whether the target of its request is in the same or a different process.

Although client- and target-side interceptors inherit from separate interfaces, in C++ it is often convenient to implement the interceptors in a single source file. In the Java programming language, the client- and target-side interceptors must be implemented separately; however, the implementations for both interceptors can be packaged together.

Interceptor Architecture

The following figure shows the relationship between request-level interceptors and the WebLogic Enterprise system.



Note the following about WebLogic Enterprise interceptors:

- Interceptors are registered administratively and are called by the ORB at the appropriate time during the execution of the application.
- When a client-side interceptor is installed and registered with an ORB, that interceptor is called with every request coming from any WebLogic Enterprise client application on that machine.

During the course of a single, successful request-response cycle of an invocation, a client-side interceptor is called twice by the ORB:

- a. When the request is first issued from the client application and arrives at the ORB (the `client_invoke` operation)
- b. When the target response arrives back at the client application process (the `client_response` operation)
- When a target-side interceptor is installed and registered with an ORB, that interceptor is called with every request that arrives for any target object on that machine.

During the course of a single request-response cycle of an invocation, a target-side interceptor is called twice by the ORB:

- a. When the client request first arrives at the ORB (the `target_invoke` operation)
- b. When the target object response arrives at the ORB (the `target_response` operation)
- You can install and register multiple client- or target-side interceptors with an ORB.
- Interceptors are independent of each other, and they do not require knowledge about the potential presence of other interceptors.
- Interceptors can *short-circuit* an invocation by returning a response directly to the client without involving the target object at all.
- Interceptors impact overall application performance because they add an additional step in the execution of every request.

The ORB maintains a list of registered interceptors. Registering an interceptor is something you do as an administrative task. During application run time, the ORB uses this list to determine when to call the interceptors and in what order, because multiple interceptors can be installed and created. When you have multiple interceptors registered, the ORB executes each interceptor consecutively. Establishing the order in which multiple interceptors are called is also an administrative task.

Capabilities and Limitations

Request-level interceptors are especially useful for implementing several different types of service applications, such as:

- Instrumentation points for collecting statistics
- Probe points that include monitoring or tracing facilities
- Security checks to determine whether a particular type of invocation should be permitted, or whether a specific bit of information can be returned to a client application. For more information about interceptors and security, see Chapter 7, “InterceptorSec Sample Interceptors.”

The following are current limitations on WebLogic Enterprise interceptors:

- Interceptors are called only by an ORB. Neither WebLogic Enterprise client nor server applications can call an interceptor directly.
- Interceptors for remote Java clients are not supported.
- Interceptors implemented in a specific programming language (namely, C++ or Java) can intercept invocations only from entities that are also implemented in that same language.
- Interceptors cannot write to the `DataStream` object.
- Interceptors cannot pass or manipulate the service context object.
- Interceptors cannot pass or manipulate the transaction current object.
- Interceptors cannot invoke methods on the `Tobj_Bootstrap` object.
- The `REPLY_NO_EXCEPTION` return status value is not supported in WebLogic Enterprise 5.1, although it appears in the method signatures operations on interceptor classes.
- An interceptor can make invocations on other objects; however, those invocations are subject to interception as well. When an interceptor invokes an object, make sure the interceptor doesn’t intercept its own invocation in an infinite loop -- which will happen if the object being invoked is in the same server process as the interceptor. In such a situation, the system can hang.

- The method signatures for operations on classes derived from the `RequestLevelInterceptor` interface include parameters for the following interfaces:

- `RequestLevelInterceptor::DataOutputStream`
- `RequestLevelInterceptor::ServiceContextList`

These interfaces are not used in the WebLogic Enterprise 5.1 product. These interfaces are defined in the WebLogic Enterprise software so that you do not need to recompile your WebLogic Enterprise application if an implementation of these interfaces is ever provided in a future release of WebLogic Enterprise. The ORB will always pass a nil object for the actual argument. You should not attempt to use these arguments; doing so will likely end the process with a serious error.

Execution Flow

The following sections explain what happens during the execution of an application in a WebLogic Enterprise environment that uses interceptors. In general, request-level interceptors are instantiated and initialized only when the ORB is initialized. At no other time can request-level interceptors be instantiated.

The return status of an interceptor controls the execution flow of the ORB run-time and any other request-level interceptors that may be installed.

Depending on the return status of an interceptor after it has been called, one of the following events may occur:

- The invocation resumes its normal path to the target object, back to the client application, or to another interceptor.
- The interceptor on either the client or the server side services the client request and sends an exception back to the client. (In this case, the request may never be sent to the target object, or the target object may provide a response that the interceptor replaces with an exception. This would happen transparently to the client application.)

Multiple request-level interceptors can be involved in a single invocation, and no interceptor needs to know about any other interceptor.

The events that take place during a request-response cycle of an invocation are presented in two categories:

- Client-side execution
- Target-side execution

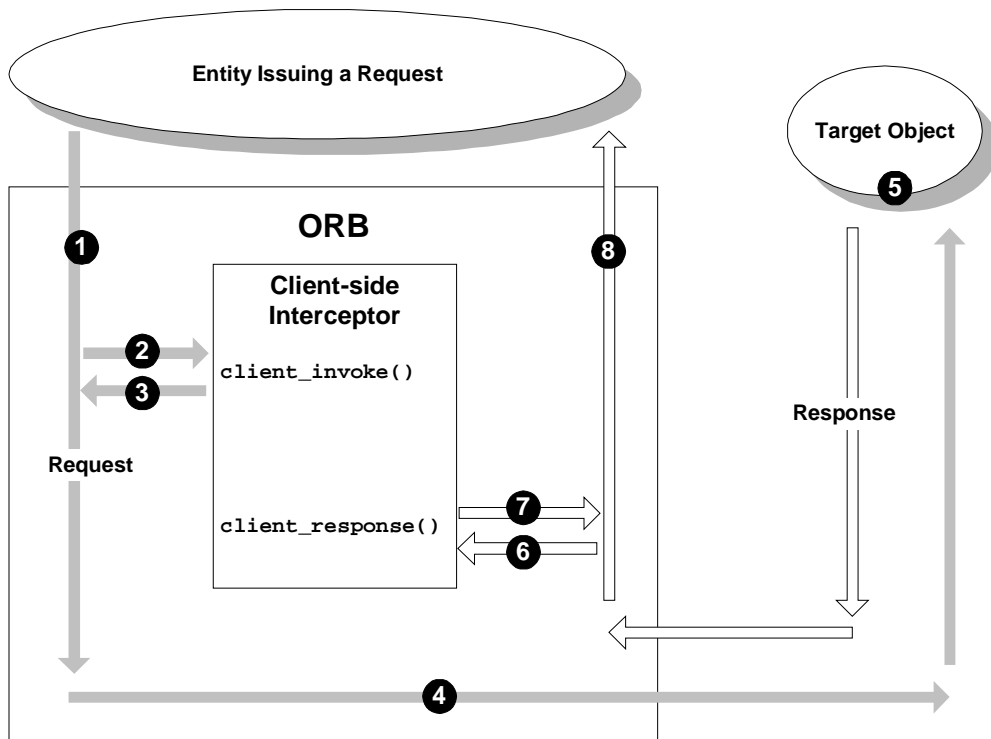
Client-side Execution

Each interceptor is called twice during the request-response cycle of an invocation: once when a request is going from the client towards the target, and again when a response returns back to the client. The client interceptor class, `ClientRequestInterceptor`, has two corresponding operations, among others, for these two calls:

- `client_invoke()`-- called when the request made on an object reference arrives at the client-side ORB.
- `client_response()`-- called when the response is returned back towards the entity making the request.

The flow of execution of a WebLogic Enterprise application that uses a client-side interceptor is shown in Figure 1-1. This figure shows a basic and successful request-response invocation cycle (that is, no exceptions are raised).

Figure 1-1 Client-side Interceptor



In Figure 1-1, note the following events that are called out:

1. The request leaves the client and arrives at the ORB.
2. The ORB calls the `client_invoke` operation on the client-side interceptor. (The section “Using Multiple Request-level Interceptors,” explains what happens when you have multiple client-side interceptors installed.)
3. The client-side interceptor processes the request and returns a status code to the ORB.
4. If no exception is returned as a result of the `client_invoke` operation, the request resumes its path toward the target object.
5. The target object processes the request and issues a response.

6. The response arrives back at the ORB, and the ORB calls the `client_response` operation on the interceptor.
7. The interceptor processes the response and returns a status code to the ORB.
8. The response is sent to the client application.

Client-side Exception Handling

The `client_invoke` and `client_response` operations each return a status value that indicates whether the client interceptor processing should continue. The interceptors may return exception status values, which cause exception handling to take place. Table 1-1 shows what happens depending on what status value is returned from these operations, and shows how the interceptors, together with the ORB, handle exceptions.

Table 1-1 Client Interceptor Return Status Values

Operation	Return Status Value	What Happens
client_invoke()	INVOKE_NO_EXCEPTION	The ORB continues normal processing of the request toward the target, calling other interceptors, if any.
	REPLY_NO_EXCEPTION (In WebLogic Enterprise 5.1, the ORB cannot process this return value, so do not implement this as a return value in your interceptors.)	The interceptor has serviced the request and no further process toward the target is needed. The request will be considered serviced as if the target processed it. Thus, the ORB <i>short circuits</i> the invocation and starts calling interceptors back towards the client. The <code>client_response</code> operation is not called on the same interceptor, but this operation on any previously invoked interceptor is called.
	REPLY_EXCEPTION	The interceptor returns an exception to the ORB. The ORB then calls each previous client-side interceptors' <code>exception_occurred</code> operation. The <code>exception_occurred</code> method gives these previous interceptors an opportunity to clean up state before the ORB returns an exception back to the client application. Thus, the ORB <i>short circuits</i> the invocation, and the invocation is now complete. For more information about the <code>exception_occurred</code> method, see the section "The <code>exception_occurred</code> Method" on page 1-14.
client_response()	RESPONSE_NO_EXCEPTION	The ORB continues normal processing of the request toward the client, calling other interceptors, if any.
	RESPONSE_EXCEPTION	The interceptor passes an exception back to the ORB, overriding any previous result of the request. The ORB invokes the <code>exception_occurred</code> method on each previous interceptor back towards the client, then returns an exception to the client application.

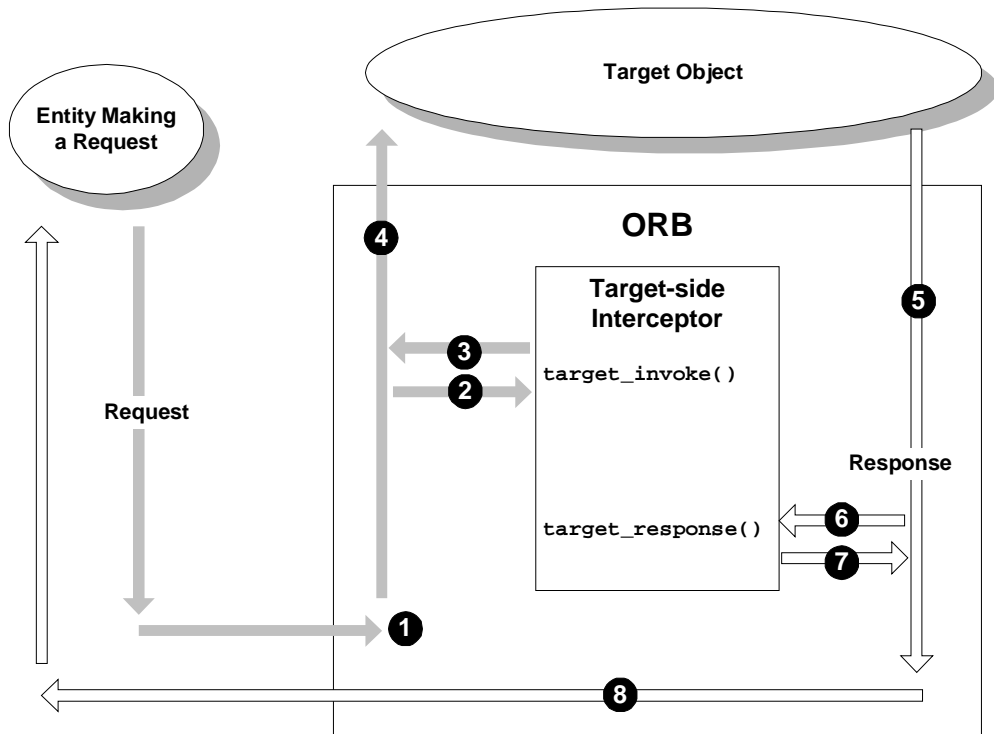
Target-side Execution

As on the client side, a target-side interceptor is called twice during a request-response cycle. Target-side interceptors inherit from the `TargetRequestInterceptor` class, which includes the following operations:

- `target_invoke()` -- called when the request arrives at the ORB that is part of the target object process
- `target_response()` -- called when the response is sent back to the client

The flow of execution of a WebLogic Enterprise application that uses a target-side interceptor is shown in Figure 1-2. This figure shows a basic and successful request-response invocation cycle (that is, no exceptions are raised).

Figure 1-2 Target-side Interceptor



In Figure 1-2, note the following events that are called out:

1. The client request arrives at the ORB.
2. The ORB calls the `target_invoke` operation on the target-side interceptor. (The section “Using Multiple Request-level Interceptors,” explains what happens when you have multiple target-side interceptors installed.)
3. The target-side interceptor processes the request and returns a status code to the ORB.
4. If no exception is raised during the execution of the `target_invoke` operation, the request resumes its path toward the target object.
5. The target object processes the request and issues a response.

6. The target-side ORB calls the `target_response` operation on the interceptor.
7. The interceptor processes the response and returns a status code to the ORB.
8. The response is sent to the client application.

Target-side Exception Handling

Table 1-2 shows what happens to an invocation on the target side depending on what status values are returned by the `target_invoke` and `target_response` operations, explaining what happens when exceptions are thrown.

Table 1-2 Target Interceptor Return Status Values

Operation	Return Status Value	What Happens
target_invoke()	INVOKE_NO_EXCEPTION	The ORB continues normal processing of the request toward the target (the object implementation), calling other interceptors, if any.
	REPLY_NO_EXCEPTION (In WebLogic Enterprise 5.1, the ORB cannot process this return value, so do not implement this as a return value in your interceptors.)	The interceptor has serviced the request and no further process toward the target is needed. The request will be considered serviced as if the target processed it. Thus, the ORB <i>short circuits</i> the invocation and starts calling interceptors back towards the client. The target_response operation is not called on the same interceptor, but this operation on any previously invoked interceptor is called.
	REPLY_EXCEPTION	The interceptor returns an exception to the ORB. The ORB then calls each previous target-side interceptors' exception_occurred operation. The exception_occurred method gives these previous interceptors an opportunity to clean up state before the ORB returns an exception back to the client ORB. Thus, the target ORB <i>short circuits</i> the invocation, and the invocation is now complete. For more information about the exception_occurred method, see the section "The exception_occurred Method" on page 1-14.
target_response()	RESPONSE_NO_EXCEPTION	The ORB continues normal processing of the request toward the client, calling other interceptors, if any.
	RESPONSE_EXCEPTION	The interceptor passes a new exception back ORB, overriding any previous result of the request. Instead of calling the target_response operation for interceptors on the way back to the client, the ORB calls the exception_occurred operation on those interceptors instead.

The `exception_occurred` Method

Every interceptor has the `exception_occurred` method, which the ORB may call under the following circumstances:

- The ORB has found an internal problem; for example, an operating system resource error or a communication problem.
- A different interceptor has set an exception (rather than an exception being generated by the ORB or the method). For example, the ORB is calling interceptors A and B, respectively. Interceptor A has set an exception, so the ORB then calls the `exception_occurred` method on Interceptor B instead of the `client_response` or `target_response` methods. Your interceptor can take advantage of this behavior to examine both the context in which the response containing the exception is being processed and the actual value of the exception without reading the exception from the `DataInputStream` structure.
- The client application is using a deferred synchronous DII invocation on a `Request` object and then releases the `Request` object. In this case no response is delivered to the client.

When one of the preceding situations has occurred, calling the `exception_occurred` method is an alternative to calling the `client_response` or `target_response` methods; however, the effect is essentially the same in that the client invocation is complete.

For more information about keeping track of requests, see the sections “Implementing the Interceptor’s Response Operation” on page 2-6 (C++) or “Implementing the Interceptor’s Response Operation” on page 3-5 (Java).

About Short-circuit Behavior

As mentioned earlier, an interceptor can short-circuit a client request by servicing the request itself or by returning an exception. In either case, the client request is never actually serviced by the target object.

This short-circuit behavior works only in the `client_invoke` or `target_invoke` methods. It doesn’t apply to the `client_response` or `target_response` methods.

Using Multiple Request-level Interceptors

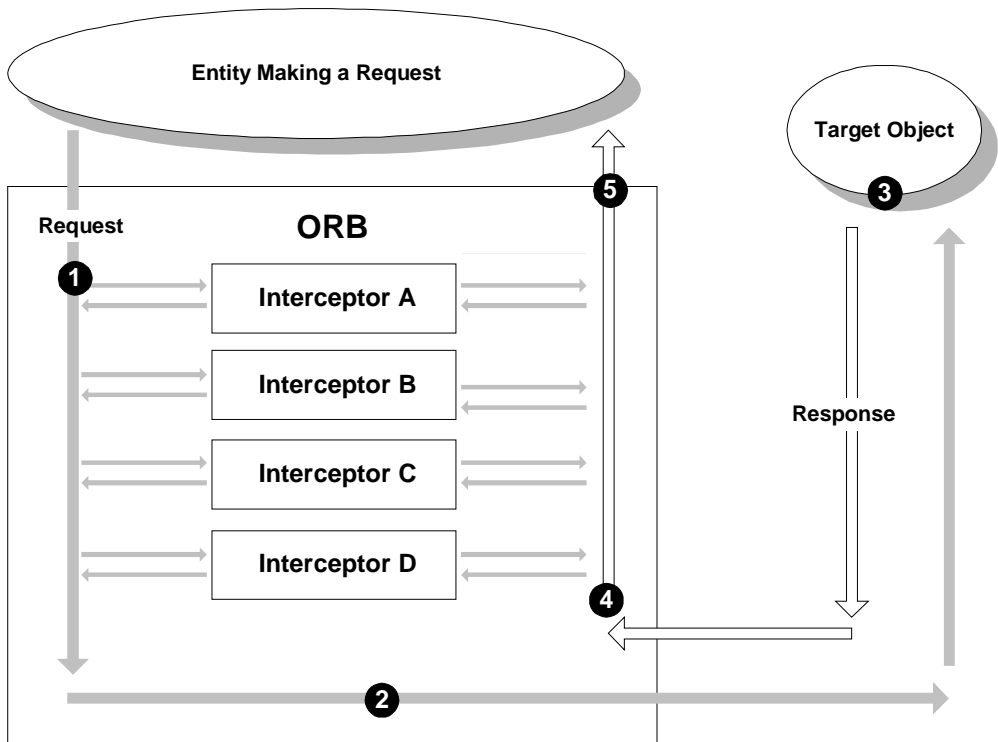
Multiple request-level interceptors are installed in a queue such that the ORB can execute one after the other in a sequential order. The ORB gives each request-level interceptor the request in succession until there are no more request-level interceptors left in the queue to execute. If all interceptors indicate success, the request is processed. The ORB delivers the resulting response to the transport in the client case, or to the object implementation in the target case. The ORB executes the interceptors servicing a response in the reverse order than that of servicing a request.

When an interceptor does not indicate success, a short circuit response results. This short circuit can be performed by the `client_invoke` or `target_invoke` operations. The status returned from the interceptor tells the ORB that the interceptor itself has decided to respond to the request with an exception, rather than to allow the target object to handle the request. (An interceptor's `client_response` or `target_response` operation cannot perform any short-circuit behavior, but it can replace the target response.)

Each interceptor is normally unaware of the other interceptors, unless they explicitly share information. This independent programming model is preserved by the execution semantics with regards to short circuits: When an interceptor indicates that a response should be short-circuited and not reach its intended destination (which is the transport on the client side, and the object implementation on the target side), the response circulates back through the interceptors through which it has successfully passed. For example, if interceptor A returns the status value `INVOKE_NO_EXCEPTION` after processing a `client_invoke` operation, expecting the request to be delivered, and the next interceptor, B, denies the request with an exception, that exception gets put into the response and is delivered to interceptor A's `exception_occurred` operation. The analogous execution model on the target side is in effect also.

Figure 1-3 shows the sequence of execution when multiple client-side interceptors are installed on an ORB. (A similar series of operations occur with multiple target-side interceptors.)

Figure 1-3 Multiple Interceptors on an ORB



In Figure 1-3, note the following events that are called out:

1. The client request arrives in the ORB, and the ORB calls interceptors A through D in sequence.
2. The request goes to the target object.
3. The target object processes the request and returns a response.
4. The response arrives back at the ORB with the client-side interceptors. The ORB then calls each of the registered interceptors in a sequence that's the reverse of the order in which they were called when the request went out.
5. The response arrives back at the client application.

Multiple Client-side Interceptors

When the ORB receives a request, the ORB calls each client-side interceptor's `client_invoke` operation in turn. If the return value `INVOKE_NO_EXCEPTION` is returned from each `client_invoke` operation (the normal case), the resulting request is marshaled into a message by the ORB and sent to the target object.

Under the following circumstances, instead of calling the `client_response` operation on remaining interceptors back towards the client, the ORB calls the `exception_occurred` on those interceptors, and then returns an exception back to the client application:

- The return value from any `client_invoke` operation is `REPLY_EXCEPTION`.

In this instance, the ORB ceases to propagate the request to remaining interceptors or to the transport. The ORB thus short-circuits the request.

- The return value from any `client_response` operation is `RESPONSE_EXCEPTION`.

In this instance, the interceptor passes an exception back to the ORB, overriding any previous result of the request.

Multiple Target-side Interceptors

As with the client-side interceptor processing, the ORB calls each target-side interceptor's `target_invoke` operation in succession. If the return value `INVOKE_NO_EXCEPTION` is returned from each `target_invoke` operation, the request is passed onto the target object.

Under the following circumstances, instead of calling the `target_response` operation on remaining interceptors back towards the client, the ORB calls the `exception_occurred` on those interceptors, and then returns an exception back towards the client application:

- The return value from any `target_invoke` operation is `REPLY_EXCEPTION`.

In this instance, the ORB ceases to propagate the request to any remaining interceptors and the target object. At this point the ORB returns a response to the client ORB, and the target ORB short-circuits the request.

- The return value from any `target_response` operation is `RESPONSE_EXCEPTION`.

In this instance, the interceptor passes an exception back to the ORB, overriding any previous result of the request.

Interceptors and Implementation Languages

Interceptors implemented in C++ can be invoked only by client applications or other entities that are also implemented in C++, and likewise for Java. If your WebLogic Enterprise application contains both C++ and Java entities that need to be intercepted, you need to implement the interceptors in both languages and register them individually.

Note the following behavior about interceptors implemented in Java:

- Interceptors on remote Java clients are not supported.
- Write each interceptor to be thread-safe if they are to be loaded by multithreaded JavaServers, because the interceptors may be called simultaneously by multiple application threads. You need to manage interceptor member and class variables, because there can be no more than one instance each interceptor among all the registered interceptors.
- It is recommended to avoid synchronizing interceptor implementations because this affects the execution of the JavaServer.
- In WebLogic Enterprise 5.1, the JavaServer ORB does not support the `LOCATION_FORWARD`, `LOCATION_FORWARD_PERM`, or `NEEDS_ADDRESSING_MODE` responses.
- For behavior concerning use of the `SecurityCurrent` object, see Chapter 7, “InterceptorSec Sample Interceptors.”

Interceptors and Meta-operations

Meta-operations are operations that support the CORBA `Object` interface, such as `is_a`, `get_interface`, and `non_existent`. Some meta-operations can be performed by the ORB without issuing an invocation, but other operations sometimes need to invoke the object; namely, the `is_a`, `get_interface`, and `non_existent` methods. These operations can thus trigger interceptors.

The CORBA-specified language binding of these operations converts the operation names from the names defined in IDL to the following:

- `_is_a`
- `_interface`
- `_non_existent` (or `_not_existent`)

If you are implementing a security-based interceptor, be aware of this behavior because the ORB may invoke these operations as part of a client request. You typically should avoid the situation where an interceptor permits only a specific set of client requests to be sent to a target object, but fails to take these meta-operations into account.

2 Developing C++ Interceptors

Developing a C++ request-level interceptor typically involves the following steps:

- Step 1: Identify the Interfaces of Your WebLogic Enterprise Applications
Also identify the machines on which you plan to deploy the interceptors.
- Step 2: Write the Interceptor Implementation Code
- Step3: Create the Interceptor Header File
- Step 4: Build the Interceptor
- Step 5: Test the Interceptor

The preceding steps are usually iterative. For example, the first time you build and test your interceptor, you might have only the most basic code in the interceptor that merely verifies that the interceptor is running. With subsequent builds and tests, you gradually implement the full functionality of the interceptor.

The sections that follow explain each of these steps in detail, using the sample interceptors packaged with the WebLogic Enterprise software for examples.

Step 1: Identify the Interfaces of Your WebLogic Enterprise Applications

Deploying an interceptor on a given machine constitutes a significant overhead because that interceptor will be invoked every time any application on that machine issues (in the case of a client-side interceptor) or receives (target-side interceptor) a request. Therefore, any interceptor you create must be well-matched to those applications.

For example, a security interceptor typically needs to know about what kinds of requests are of concern, and what kinds of data are being handled in the request.

Any interceptor that deals with specific requests needs to be able to extract the interface repository ID from the request. With that interface knowledge, the interceptor then has a way of knowing what kind of data is in the request, and can then handle that data in a request-specific fashion.

In addition, if a request is sent that is *not* of interest, the interceptor needs to be able to pass the request through quickly and efficiently.

The PersonQuery example described in Chapter 5, “PersonQuery Sample Application,” uses an interceptor that determines whether the user of the PersonQuery client application can receive addresses. If the identity of the user matches specific criteria, the interceptor allows the full address number to be returned to the client. If no match exists, the interceptor returns only the string of x characters to the log file in place of the address.

Step 2: Write the Interceptor Implementation Code

To implement an interceptor:

- For your first pass on implementing an interceptor, keep it simple. For example, you might decide for each function member to implement a statement that prints a message to a log file. This would simply verify that the interceptor is properly built, registered, and running. Once you know your interceptor is working properly, you can iteratively add code until you have all the functionality you need.
- If you are planning to deploy client- and target-side interceptors to implement a specific piece of functionality, you can implement both interceptors in a single source file. Then when you build and deploy the interceptors, you can configure them separately on the client- and target-side machines if you desire. The sample interceptors provided with the WebLogic Enterprise software are done this way.

The topics that follow discuss implementation considerations that may be typical of many interceptors. Examples from the `InterceptorData` interceptors, which are described in Chapter 8, “`InterceptorData` Sample Interceptors,” are provided.

Starting the Implementation File

You can use the code fragments included in Appendix A as a place to start implementing your interceptor. You may use the code included in Appendix A, or you may copy the following starter files available at the WebLogic Enterprise Developer Center on the BEA Web site:

File Name	Description
<code>intercep.h</code>	Interceptor header starter file. The contents of this file, and instructions for using it, are in the section “Step3: Create the Interceptor Header File” on page 2-8.
<code>intercep.cpp</code>	Interceptor implementation starter file.

For information about getting these starter files from the WebLogic Enterprise Developer Center, see the *Release Notes*.

You can start your interceptor implementation using the sample interceptor code provided in Appendix A, where *YourInterceptor* represents the name of the interceptor you are implementing. Note that in WebLogic Enterprise version 5.1, the ORB will always pass nil references for the *ServiceContextList* and *CORBA::DataOutputStream* parameters. You should not use or reference those parameters. You should not test those parameters for nil because this restriction may change in a future version.

Initializing the Interceptor at Run Time

All interceptors are instantiated when the ORB is initialized. At no other time are request-level interceptors instantiated. As part of initializing, the interceptor's initialization routine must instantiate an instance of an implementation for a client interceptor, or a target interceptor, or both, depending upon what the interceptor intends to support. As mentioned earlier, a single shareable image can support both the client-side and target-side interceptors. The instances of any interceptor instantiated are then returned from the initialization routine and registered with the ORB runtime.

The following code fragment is from the *InterceptorData* interceptor, and shows the declaration of the initialization operation invoked by the client-side ORB when that ORB is initialized:

```
void InterceptorDataClientInit(
    CORBA::ORB_ptr          TheORB,
    RequestLevelInterceptor::ClientRequestInterceptor ** ClientPtr,
    RequestLevelInterceptor::TargetRequestInterceptor ** TargetPtr,
    CORBA::Boolean *        RetStatus)
```

The following code fragment shows the statements to instantiate the *InterceptorData* client interceptor class. Note that this fragment uses a class named *tracker*, which is used for keeping track of each incoming client request so that it can be matched with the response returned by the target object. The tracker class is described in the section “Identifying Operations in the Request” on page 2-5.

```
ClientInterceptorData * client = new ClientInterceptorData(TheORB, tracker);
if (!client)
{
    tmpfile << "InterceptorDataClientInit: Client alloc failed"
    << endl << endl;
```

```
*RetStatus = CORBA_FALSE;  
delete tracker;  
return;  
}
```

The following code fragment shows the statements to return the interceptor class to the ORB:

```
*ClientPtr = client;  
*TargetPtr = 0;  
*RetStatus = CORBA_TRUE;  
return;
```

Obtaining the Interface Name from a Request

If you have an interceptor that works with specific interfaces or requests, the interceptor needs a way to extract the interface ID associated with a request so that the interceptor can identify it and thus know how to handle the data in the request. For example, the `InterceptorData` interceptor manipulates the request parameters sent in requests from the `PersonQuery` application. To manipulate the request parameters, the interceptor needs to know which request is being sent.

The following code fragment from the `InterceptorData` sample shows the interface ID extracted from the `RequestContext` structure:

```
if (strcmp(request_context.interface_id.in(),  
          PersonQuery::_get_interface_name()) != 0)  
    return ret_status;
```

Identifying Operations in the Request

Using the extracted interface ID, the `InterceptorData` sample uses a simple `switch` statement to identify the operation in the client request. That way, the interceptor will know what to do with the request parameters contained in the request.

The following code fragment shows the `switch` statement that checks for either the `Exit` operation or the operation to query the database for a person by name. Note the use of the `parser` object, which extracts operations from the request retrieved from the `tracker` object.

```
m_outfile << "    Operation:          " << request_context.operation << endl;
PQ parser;
PQ::op_key key = parser.MapOperation(request_context.operation.in());
switch (key)
{
    default:
        m_outfile << "        ERROR: operation is not member of "
            << request_context.interface_id.in() << endl;
        excep_val = new CORBA::BAD_OPERATION();
        return Interceptors::REPLY_EXCEPTION;

    case PQ::Exit:
        m_outfile << endl;
        return ret_status;

    case PQ::ByPerson:
        {
            PersonQuery::Person per;
            parser.GetByPerson(request_arg_stream, &per);
            m_outfile << "    Parameters:" << endl;
            m_outfile << per << endl;
        }
        break;
}
```

Implementing the Interceptor's Response Operation

Extracting an interface ID out of a client request is fairly straightforward. However, it's not quite as simple to do that with a target response. If an interceptor needs to know what interface and operation is associated with the response it receives from the ORB, it needs to have special logic for tracking requests. It is the interceptor's responsibility to track requests coming from the client.

The `InterceptorData` samples implement a language object, called `Tracker`, that keeps a record of the target-bound requests, and then matches the target responses to them when those responses arrive back at the interceptor.

The `client_response` and `target_response` operations on the `InterceptorData` samples extract interface and operation information from the `Tracker` object when responses are returned from the target.

The following InterceptorData code fragment extracts the request associated with a response:

```
RequestInfo * req_info = m_tracker->CompleteRequest(reply_context);
if (!req_info)
{
    m_outfile << "    unable to find request for this reply (must not be one
    we care about)" << endl << endl;
    return Interceptors::RESPONSE_NO_EXCEPTION;
}

//
// This is the interface we are expecting. Now identify the operation
// being invoked, so we can parse the request parameters.
//

m_outfile << "    ReplyStatus:    ";
OutputReplyStatus(m_outfile, reply_context.reply_status);
m_outfile << endl;
m_outfile << "    Interface:        " << req_info->intf() << endl;
m_outfile << "    Operation:        " << req_info->op() << endl;
PQ parser;
PQ::op_key key = parser.MapOperation(req_info->op());
```

Now that the interceptor has obtained the request associated with the response, the interceptor can handle the data in the response appropriately.

Reading Parameters Out of a Data Input Stream

The following code fragment shows an example of how the InterceptorData sample places the request parameters from a data stream into a structure. The parameter *S* in the following code fragment represents a pointer to a *DataInputStream* structure that can be used by the interceptor implementation to retrieve the value of the reply parameters of the *PersonQuery* operation. The code encapsulated by the braces in this code fragment extracts the parameters of the response from the *DataInputStream* structure. For more information about the *DataInputStream* structure, see Chapter 9, “Request-Level Interceptor API.”

```
void PQ::get_addr(CORBA::DataInputStream_ptr S,
                  PersonQuery::Address *addr)
{
    addr->number = S->read_short();
    addr->street = S->read_string();
    addr->town = S->read_string();
}
```

```
addr->state = S->read_string();  
addr->country = S->read_string();  
}
```

Exceptions

Exceptions from interceptors returned via the `excep_val` parameter can only be a derived type from the `CORBA::SystemException` base class. (Any other exception type that the interceptor implementations return to the ORB is converted by the ORB to a `CORBA::UNKNOWN` exception, which is passed via the `excep_val` parameter.) You need to map exceptions to a `CORBA::SystemException` class or one of its derivatives.

Step3: Create the Interceptor Header File

After you have created any implementation code in the interceptor implementation file, you need to provide any data or operations as needed to the interceptor header file.

The following code example shows basic information that is required in the header file for an interceptor implementation file that implements both client- and target-side interceptors.

This example also shows:

- The include file needed for security
- Target data members for security

In this code example, `YourInterceptor` represents the name of the interceptor you are creating.

```
#include <CORBA.h>  
#include <RequestLevelInterceptor.h>  
#include <security_c.h>           //for security  
  
class YourInterceptorClient : public virtual  
RequestLevelInterceptor::ClientRequestInterceptor  
{  
private:  
    YourInterceptorClient() {}  
}
```

```
CORBA::ORB_ptr m_orb;
public:
    YourInterceptorClient(CORBA::ORB_ptr TheOrb);
    ~YourInterceptorClient() {}
    Interceptors::ShutdownReturnStatus shutdown(
        Interceptors::ShutdownReason reason,
        CORBA::Exception_ptr & excep_val);
    CORBA::String id();
    void exception_occurred (
        const RequestLevelInterceptor::ReplyContext & reply_context,
        CORBA::Exception_ptr excep_val);
    Interceptors::InvokeReturnStatus client_invoke (
        const RequestLevelInterceptor::RequestContext & request_context,
        RequestLevelInterceptor::ServiceContextList_ptr service_context,
        CORBA::DataInputStream_ptr request_arg_stream,
        CORBA::DataOutputStream_ptr reply_arg_stream,
        CORBA::Exception_ptr & excep_val);
    Interceptors::ResponseReturnStatus client_response (
        const RequestLevelInterceptor::ReplyContext & reply_context,
        RequestLevelInterceptor::ServiceContextList_ptr service_context,
        CORBA::DataInputStream_ptr arg_stream,
        CORBA::Exception_ptr & excep_val);

};

class YourInterceptorTarget : public virtual
RequestLevelInterceptor::TargetRequestInterceptor
{
private:
    YourInterceptorTarget() {}
    CORBA::ORB_ptr m_orb;
    SecurityLevel::Current_ptr m_security_current;           //for security
    Security::AttributeTypeList * m_attributes_to_get;       //for security
public:
    YourInterceptorTarget(CORBA::ORB_ptr TheOrb);
    ~YourInterceptorTarget();
    Interceptors::ShutdownReturnStatus shutdown(
        Interceptors::ShutdownReason reason,
        CORBA::Exception_ptr & excep_val);
    CORBA::String id();
    void exception_occurred (
        const RequestLevelInterceptor::ReplyContext & reply_context,
        CORBA::Exception_ptr excep_val);
    Interceptors::InvokeReturnStatus target_invoke (
        const RequestLevelInterceptor::RequestContext & request_context,
        RequestLevelInterceptor::ServiceContextList_ptr service_context,
        CORBA::DataInputStream_ptr request_arg_stream,
        CORBA::DataOutputStream_ptr reply_arg_stream,
        CORBA::Exception_ptr & excep_val);
```

```
Interceptors::ResponseReturnStatus target_response (  
    const RequestLevelInterceptor::ReplyContext & reply_context,  
    RequestLevelInterceptor::ServiceContextList_ptr service_context,  
    CORBA::DataInputStream_ptr arg_stream,  
    CORBA::Exception_ptr & excep_val);  
  
};
```

Step 4: Build the Interceptor

Interceptors are built into shareable libraries. Therefore, the steps for building an interceptor are platform-specific. For details about the specific commands and options used to build interceptors on any particular platform, execute the makefile that builds the interceptor sample applications provided with the WebLogic Enterprise software, and view the results of the build in the log file that results from the build.

The command to build the sample interceptors is as follows:

Windows NT

```
> nmake -f makefile.nt
```

UNIX

```
> make -f makefile.mk
```

For more information about building and running the sample interceptors provided with the WebLogic Enterprise software, see Chapter 5, “PersonQuery Sample Application.”

Step 5: Test the Interceptor

Testing an interceptor requires you to perform the following tasks:

- Register the interceptor
- Boot the WebLogic Enterprise server application using the `tmboot` command

- Run the WebLogic Enterprise client application
- Check the interceptor's log file to verify the interceptor's behavior

For information about registering interceptors, see the topic Chapter 4, “Deploying the Interceptor.”

3 Developing Java Interceptors

Developing a Java request-level interceptor typically involves the following steps:

- Step 1: Identify the Interfaces of Your WebLogic Enterprise Applications
Also identify the machines on which you plan to deploy the interceptors.
- Step 2: Write the Interceptor Implementation Code
- Step 3: Build the Interceptor
- Step 4: Test the Interceptor

The preceding steps are usually iterative. For example, the first time you build and test your interceptor, you might have only the most basic code in the interceptor that merely verifies that the interceptor is running. With subsequent builds and tests, you gradually implement the full functionality of the interceptor.

The sections that follow explain each of these steps in detail, using the sample interceptors packaged with the WebLogic Enterprise software for examples, and also provides notes about implementing Java interceptors.

Step 1: Identify the Interfaces of Your WebLogic Enterprise Applications

Deploying an interceptor on a given machine constitutes a significant overhead because that interceptor will be invoked every time any application on that machine issues (in the case of a client-side interceptor) or receives (target-side interceptor) a request. Therefore, any interceptor you create must be well-matched to those applications.

For example, a security interceptor typically needs to know about what kinds of requests are of concern, and what kinds of data are being handled in the request.

Any interceptor that deals with specific requests needs to be able to extract the interface repository ID from the request. With that interface knowledge, the interceptor then has a way of knowing what kind of data is in the request, and can then handle that data in a request-specific fashion.

In addition, if a request is sent that is *not* of interest, the interceptor needs to be able to pass the request through quickly and efficiently.

The PersonQuery example described in Chapter 5, “PersonQuery Sample Application,” uses an interceptor that determines whether the user of the PersonQuery client application can receive addresses. If the identity of the user matches specific criteria, the interceptor allows the full address to be returned to the client. If no match exists, the interceptor returns only the string of x characters to the log file in place of the address.

Step 2: Write the Interceptor Implementation Code

For your first pass on implementing an interceptor, keep it simple. For example, you might decide to implement a statement in each of the interceptor's methods that prints a message to a log file. This would simply verify that the interceptor is properly built, registered, and running. Once you know your interceptor is working properly, you can iteratively add code until you have all the functionality you need.

The topics that follow discuss implementation considerations that may be typical of many interceptors. Examples from the `InterceptorData` interceptors, which are described in Chapter 8, "InterceptorData Sample Interceptors," are provided.

Starting the Implementation File

You can use the code fragments included in Appendix B as a place to start implementing your interceptor. You may use the code included in Appendix B, or you may copy the `intercep.java` starter file available at the WebLogic Enterprise Developer Center on the BEA Web site. For information about getting this starter file from the WebLogic Enterprise Developer Center, see the *Release Notes*.

Note that in WebLogic Enterprise version 5.1, the ORB will always pass `nil` references for the `ServiceContextList` and `CORBA.DataOutputStream` parameters. You should not use or reference those parameters. You should not test those parameters for `nil` because this restriction may change in a future version.

Implementing the Interceptor's Constructor

All interceptors are instantiated when the ORB is initialized. At no other time are request-level interceptors instantiated. The instances of any interceptor instantiated are then returned from the initialization routine and registered with the ORB run time.

The set of interceptors registered with an ORB is processed during ORB initialization, and an instance of each interceptor is created via Java Reflection APIs. There is no need to implement an initialization routine for Java interceptors as in the C++ ORB implementation.

When a Java interceptor is instantiated, the interceptor expects to find the `org.omg.CORBA.ORB` parameter, which is the reference to the ORB, in the interceptor's constructor. This constructor can store this ORB reference only at instantiation; and although the ORB has just been initialized, the TP Framework has yet to be initialized. Therefore, any attempt to do ORB-related work, such as an invocation on the ORB, results in undefined behavior.

If the ORB cannot find the expected constructor, the ORB attempts to load the default construction, which contains no arguments.

The following code fragment shows the constructor for the `InterceptorData` sample interceptor:

```
public InterceptorData(org.omg.CORBA.ORB orb)
{
    theOrb = orb;
}
```

Obtaining the Interface Name from a Request

If you have an interceptor that works with specific interfaces or requests, the interceptor needs a way to extract the interface ID associated with a request so that the interceptor can identify it and thus know how to handle the data in the request. For example, the `InterceptorData` interceptor manipulates the data sent in requests from the `PersonQuery` application. To manipulate that data, the interceptor needs to know which request is being sent.

The following code fragment from the `InterceptorData` sample shows the interface ID extracted from the `RequestContext` structure. In this fragment, the interceptor is checking to see if the request is an invocation on the `PersonQuery` interface.

```
TP.userlog("Interface Id: " + request_context.interface_id);
if(request_context.interface_id.equals("IDL:beasys.com/PersonQuery:1.0"))
{
    TP.userlog("Operation: " + request_context.operation);
}
```

Identifying Operations in the Request

Using the extracted interface ID, the `InterceptorData` sample uses a series of `if-else` statements to identify the operation in the client request. That way, the interceptor will know what to do with the data contained in the request.

The following code fragment checks for the operation to query the database for a person by name. Note the use of the `parsePerson` method, which extracts the value of a parameter from the `DataInputStream` object.

```
if(request_context.operation.equals("findPerson"))
{
    TP.userlog("Person = " + parsePerson(request_arg_stream));
}
else if(request_context.operation.equals("findPersonByName"))
{
    TP.userlog("Name = " + parseName(request_arg_stream));
}
```

Implementing the Interceptor's Response Operation

Extracting an interface ID out of a client request is fairly straightforward. However, it's not quite as simple to do that with a target response. If an interceptor needs to know what invocation is associated with the response it receives from the target, it needs to have special logic for doing that.

The `InterceptorData` interceptor uses a hashtable to track target-bound requests, so that the interceptor can then matches the target responses to them when those responses arrive back at the interceptor.

The following code fragment shows the `InterceptorData` interceptor putting the request key into the hashtable, `instanceOP`:

```
instanceOP.put(id(), request_context.operation);
```

The `target_response` operation on the `InterceptorData` interceptor extracts interface and operation information from the hashtable when responses are returned from the target.

The following `InterceptorData` code fragment extracts the request associated with a response:

```
String operation = (String) instanceOP.get(id());
```

Now that the interceptor has obtained the request associated with the response, the interceptor can handle the data in the response appropriately.

Reading Data Out of a Data Input Stream

The following code fragment shows an example of how the `InterceptorData` sample places the data from a data stream into a structure:

```
private addr_ parseAddress(org.omg.CORBA.DataInputStream stream)
{
    short number = stream.read_short();
    String street = stream.read_string();
    String town = stream.read_string();
    String state = stream.read_string();
    String country = stream.read_string();

    addr_ addr = new addr_(number, street, town, state, country);
    return addr;
}
```

Step 3: Build the Interceptor

Interceptors implemented in Java are packaged as JAR files. Therefore, the steps for building interceptors are platform-specific. For details about the specific commands and options used to build interceptors on any particular platform, execute the makefile that builds the interceptor sample applications provided with the WebLogic Enterprise software, and view the results of the build in the log file that results from the build.

The command to build the sample interceptors is as follows:

Windows NT

```
> nmake -f makefile.nt
```

UNIX

```
> make -f makefile.mk
```

For more information about building and running the sample interceptors provided with the WebLogic Enterprise software, see Chapter 5, “PersonQuery Sample Application.”

Step 4: Test the Interceptor

Testing an interceptor requires you to perform the following tasks:

- Register the interceptor
- Boot the WebLogic Enterprise server application, using the `tmboot` command
- Run the WebLogic Enterprise client application. (Note that the WebLogic Enterprise software provides Java interceptor examples on the server side only. To test the Java examples provided with the WebLogic Enterprise software, you run them with the C++ client examples.)

For information about registering interceptors, see the topic Chapter 4, “Deploying the Interceptor.”

Notes About Implementing Java Interceptors

Note the following about implementing interceptors in the Java programming languages:

- Remote clients

Interceptors for remote Java clients are not supported.

- Exceptions

Exceptions from interceptors returned via the `excep_val` parameter can only be a derived type from the `SystemException` base class. Any other exception type that the interceptor implementations throw must be caught by the

implementation and may not be propagated back via the `excep_val` parameter. You need to map exceptions to a `SystemException` class or one of its derivatives.

■ Threading

If interceptors are loaded by a multithreaded `JavaServer`, make sure that you write the interceptor to be thread-safe, because the interceptors might be invoked simultaneously by multiple application threads. It is your responsibility to manage interceptor member and class variables, because there will only be at most one instance each of these member and class variables for all registered interceptors.

It is recommended that you avoid synchronizing interceptor implementations, because this impacts the execution of the `JavaServer`.

4 Deploying the Interceptor

There are three administrative tasks associated with managing the registration of interceptors:

- Registering an Interceptor
- Unregistering an Interceptor
- Changing the Order in Which Interceptors are Called

This section explains these three tasks.

Registering an Interceptor

You use the `epifregplugin` command to register your interceptors with an ORB. When you register an interceptor, the interceptor is added to the end of the list of interceptors already registered with the ORB. This is important when you have multiple interceptors registered with an ORB.

The syntax of the `epifregplugin` command for registering interceptors is the following:

```
epifregplugin -t bea/wle -i AppRequestInterceptor \  
  -p <InterceptorName> -f <FileName> -e <EntryPoint> \  
  -u "DisplayName=<Administrative Name>" -v 1.0
```

In the preceding command line:

- *InterceptorName* represents the name of the interceptor registered with the ORB, and the name you choose needs to be unique among those previously registered. You use this name for specifying the order of multiple interceptors and for unregistering an interceptor. The *FileName*, *EntryPoint*, and *DisplayName* arguments that follow are associated with this name.
- *FileName* represents the location of the file containing the implementation of the interceptor. This name is operating system and language dependent. For C++ interceptors, this file is a sharable image file. For Java, the file is a java archive file (JAR), and its name ends with `.jar`.
- *EntryPoint* represents a string value that is the name of the entry point for the interceptor. This name is programming language specific. In Java, this value is the name of the class in which the interceptor is implemented. In C++, this value is the name of the initialization function in the shareable image that creates an instance of the interceptor.
- *DisplayName* specifies a string value used for administrative functions and other reporting purposes. This name is strictly an administrative name.

Note: When you register an interceptor on a machine on which WebLogic Enterprise server processes are already running, those processes will not be subject to interception. Only those processes that are started *after* an interceptor is registered are subject to interception. If you want to make sure that all WebLogic Enterprise server processes are subject to interception, make sure that you register your interceptors before you boot any WebLogic Enterprise server processes.

Unregistering an Interceptor

Use the `epifunregplugin` command to unregister an interceptor from an ORB. This command has the following syntax:

```
epifunregplugin -t bea/wle -p <InterceptorName>
```


The argument *<InterceptorName>* is the same case-insensitive name specified in the `epifregplugin` command. Unregistering an interceptor takes it out of the interceptor order.

Changing the Order in Which Interceptors are Called

You can see the order in which interceptors are registered, and thus called, by using the following command:

```
epifregedit -t bea/wle -g -k SYSTEM/interfaces/AppRequestInterceptor
```

The `epifregedit` displays the order in which interceptors are executed when the ORB receives a request.

You can change the order in which the interceptors are executed using the following command:

```
epifregedit -t bea/wle -s -k SYSTEM/interfaces/AppRequestInterceptor \  
-a Selector=Order -a Order=<InterceptorName1>,<InterceptorName2>,...
```

Each *<InterceptorName>* is the case-insensitive name of the interceptor that must have been previously registered. This command replaces the order currently in the registry. The `epifregedit` command must specify every interceptor that you want to have loaded and executed by the ORB. If an interceptor is still registered and if you do not specify its name using `epifregedit` command, the interceptor is not loaded.

5 PersonQuery Sample Application

To understand and use the interceptor examples packaged with the WLE software, you need to build and run the PersonQuery sample application. The PersonQuery sample application itself does not contain any interceptors; however, this application is used as the basis for the sample interceptor applications that are described in the three chapters that follow.

This topic includes the following sections:

- How the PersonQuery Sample Application Works
- The OMG IDL for the PersonQuery Sample Application
- Building and Running the PersonQuery Sample Application
- Building and Running the Java RLI Sample Applications

Note: The WebLogic Enterprise software provides C++ versions of both the client and server components of the PersonQuery sample application. However, only the server component of the PersonQuery sample application is provided in Java; there is no Java version of the PersonQuery client component. To build and run the Java version of the PersonQuery server application, you also need to build and run the C++ version of the PersonQuery client application.

How the PersonQuery Sample Application Works

The PersonQuery sample application implements a simple database query interface. Using the PersonQuery application, a user can get information about people in the database that match specific search criteria, such as:

- Physical characteristics, such as age, weight, hair color, eye color, or skin color
- Name, address, or other details

The PersonQuery application contains the following components:

- A client application, which issues requests that contain a variety of data types as parameters. The client application accepts command line input from the user in a specific form, packages the input according to the sample interface, and sends the appropriate request.

When the client application receives the result of the query from the server, it will report the number of items that were found. The user can then enter the command that displays the result of the latest query, or specify a new query.

- A server application, which contains a simple, built-in database. The server application accesses the database to service the client request.

PersonQuery Database

The PersonQuery database in the server application contains the following information about each person in the database:

- Name
- Address
- U.S. Social Security number
- Sex
- Age

- Marital status
- Hobby
- Date of birth
- Height
- Weight
- Hair color
- Skin color
- Eye color
- Other physical characteristics

Client Application Command-line Interface

The PersonQuery sample application implements a simple command-line interface in the client component with which the user can enter database query commands and the command to exit from the application.

The database query commands have the following syntax:

```
Option? command [keyword] [command [keyword]]...
```

In this command syntax:

- *Option?* is the PersonQuery command prompt.
- *command* is one of the PersonQuery commands from Table 5-1.
- *keyword* is one of the keywords from Table 5-1. Note the following rules on specifying keywords:
 - Compound keywords, as typically supplied for the name and address commands, must be separated by spaces and enclosed in double-quote characters (""), as in the following command:

```
Option? name "Thomas Mann"
```

- When specifying an address, always separate street name, city name, state or province, country name, and other parts of the address with commas, as in the following command:

Option? **address "116 Einbahnstrasse, Frankfurt am Main, BRD"**

- You may specify multiple commands in a single line, as in the following example:

Option? **hair brown eyes blue**

Table 5-1 PersonQuery Application Commands and Keywords

Command	Keyword	Description
name	<i>"firstname lastname"</i>	Queries by name. Strings with spaces must be quoted.
address	<i>"number street, city..."</i>	Queries by address. Strings with spaces must be quoted. Address parts are street number, street, town, state, and country. Entries for street, town, state, and country must be separated by commas.
ss	<i>xxx-xx-xxxx</i>	Queries by U.S. Social Security number. The keyword must in the form <i>xxx-xx-xxxx</i> .
sex	<i>sex</i>	Queries by sex. Choices are male, female, and cant_tell.
age	<i>age</i>	Queries by age.
marriage	<i>status</i>	Queries by marital status. Choices are married, single, divorced, and not_known.
hobby	<i>hobby</i>	Queries by hobby. Choices are who_cares, rocks, swim, tv, stamps, photo, and weaving.
dob	<i>mm/dd/yyyy</i>	Queries by date. The keyword must be in the form <i>mm/dd/yyyy</i> .
height	<i>inches</i>	Queries by height, in inches.

Command	Keyword	Description
weight	<i>pounds</i>	Queries by weight, in pounds.
hair	<i>color</i>	Queries by hair color. Choices are white, black, red, brown, green, yellow, blue, gray, and unknown.
skin	<i>color</i>	Queries by skin color. Choices are white, black, brown, yellow, green, and red.
eyes	<i>color</i>	Queries by eye color. Choices are blue, brown, gray, green, violet, black, and hazel.
other	<i>feature</i>	Queries by other physical features. Choices are tattoo, limb (that is, a limb is missing), scar, and none.
result		Displays the result of last query on output.
exit		Displays bill for services rendered and closes application.

The OMG IDL for the PersonQuery Sample Application

Listing 5-1 provides the OMG IDL code for the implemented in the PersonQuery sample application:

Listing 5-1 OMG IDL code for the PersonQuery Application Interfaces

```
#pragma prefix "beasys.com"

interface PersonQuery
```

```

{
    enum MONTHS {Empty, Jan, Feb, Mar, Apr, May, Jun, Jul, Aug,
                Sep, Oct, Nov, Dec};
    struct date_ {
        MONTHS Month;
        short Day;
        short Year;
    };
    typedef date_ Date;
    struct addr_ {
        short number;
        string street;
        string town;
        string state;
        string country;
    };
    typedef addr_ Address;
    enum MARRIAGE {not_known, single, married, divorced};
    enum HOBBIES {who_cares, rocks, swim, tv, stamps, photo,
                weaving};
    enum SEX {cant_tell, male, female};
    enum COLOR {white, black, brown, yellow, red, green, blue,
                gray, violet, hazel, unknown, dontcare};
    enum MARKINGS {dont_care, tattoo, scar, missing_limb,
                none};
    struct person_ {
        string      name;
        Address     addr;
        string      ss;
        SEX         sex;
        short       age;
        MARRIAGE    mar;
        HOBBIES     rec;
        Date        dob;
        short       ht;
        long        wt;
        COLOR       hair;
        COLOR       eye;
        COLOR       skin;
        MARKINGS    other;
    };
    typedef person_ Person;
    typedef sequence <Person> Possibles;
    union reason_ switch (short)
    {
        case 0:      string      name;
        case 1:      Address     addr;
        case 2:      string      ss;
        case 3:      SEX         sex;
    }
}

```



```
        case 4:      short      age;
        case 5:      MARRIAGE   mar;
        case 6:      HOBBIES    rec;
        case 7:      Date       dob;
        case 8:      short      ht;
        case 9:      long        wt;
        case 10:     COLOR       hair;
        case 11:     COLOR       eyes;
        case 12:     COLOR       skin;
        case 13:     MARKINGS    other;
};
typedef reason_ Reason;

exception DataOutOfRange
{
    Reason why;
};
boolean  findPerson (
    in Person who, out Possibles hits)
    raises (DataOutOfRange);
boolean  findPersonByName (
    in string name, out Possibles hits)
    raises (DataOutOfRange);
boolean  findPersonByAddress (
    in Address addr, out Possibles hits)
    raises (DataOutOfRange);
boolean  findPersonBySS (
    in string ss, out Possibles hits)
    raises (DataOutOfRange);
boolean  findPersonByAge (
    in short age, out Possibles hits)
    raises (DataOutOfRange);
boolean  findPersonByMarriage (
    in MARRIAGE mar, out Possibles hits)
    raises (DataOutOfRange);
boolean  findPersonByHobbies (
    in HOBBIES rec, out Possibles hits)
    raises (DataOutOfRange);
boolean  findPersonBydob (
    in Date dob, out Possibles hits)
    raises (DataOutOfRange);
boolean  findPersonByHeight (
    in short ht, out Possibles hits)
    raises (DataOutOfRange);
boolean  findPersonByWeight (
    in long wt, out Possibles hits)
    raises (DataOutOfRange);
boolean  findPersonByHairColor (
    in COLOR col, out Possibles hits)
```

```
        raises (DataOutOfRange);
    boolean findPersonBySkinColor (
        in COLOR col, out Possibles hits)
        raises (DataOutOfRange);
    boolean findPersonByEyeColor (
        in COLOR col, out Possibles hits)
        raises (DataOutOfRange);
    boolean findPersonByOther (
        in MARKINGS other, out Possibles hits)
        raises (DataOutOfRange);
    void exit();
};
interface QueryFactory
{
    PersonQuery createQuery (in string name);
};
```

Building and Running the PersonQuery Sample Application

Regardless of whether you plan to experiment with the C++ or Java samples, you need to perform the steps described in this section. If you are planning to run the Java samples, complete the steps described in this section, then also complete the steps described in the section “Building and Running the Java RLI Sample Applications” on page 5-14.

To build and run the PersonQuery sample application:

1. Copy the files for the PersonQuery sample application into a work directory.
2. Change the protection of the files for the PersonQuery sample application.
3. Set the environment variables.
4. Build the client and server sample applications.
5. Start the PersonQuery client and server applications.

6. Using the client application, enter a number of commands to search the database on the server.
7. Stop the PersonQuery sample application.

Copying the Files for the PersonQuery Sample Application

The request-level interceptor sample application files are located in the following directory:

```
$TUXDIR\samples\corba\interceptors_cxx
```

To create a copy of these files so that you can build them and run them, do the following:

1. Create a working directory into which to copy the sample files.
2. Copy the `interceptors_cxx` samples to the working directory created in the previous step:

Windows NT

```
> xcopy /s/i %TUXDIR%\samples\corba\interceptors_cxx <workdirectory>\cxx
```

UNIX

```
> cp -R $TUXDIR/samples/corba/interceptors_cxx <workdirectory>/cxx
```

3. Change to the working directory containing the sample files:

Windows NT

```
> cd <workdirectory>\cxx
```

UNIX

```
> cd <workdirectory>/cxx
```

You will use the files listed and described in Table 5-2 in the PersonQuery sample application.

Table 5-2 Files Included in the C++ Interceptors Sample Applications

Directory	File	Description
app_cxx (subdirectory under interceptors_cxx)	Readme.txt	The file that provides the latest information about building and running the set of interceptor sample applications.
	makefile.mk	The makefile for building the entire set of interceptor sample applications (the PersonQuery application and all the sample interceptors) on UNIX systems.
	makefile.nt	The makefile for building the entire set of interceptors sample applications (the PersonQuery application and all the sample interceptors) on Windows NT systems.
	makefile.inc	The generic makefile that uses the macros defined in the appropriate <i>platform.inc</i> file.
	personquery_i.h and personquery_i.cpp	The implementation of the PersonQuery interfaces.
	personqueryc.cpp	The PersonQuery client application source file.
	personquerys.cpp	The PersonQuery database server source file.
	setenv.ksh	The shell file that sets all the required environment variables for building the entire set of interceptor sample applications on UNIX systems.
	setenv.cmd	The command file that sets all the required environment variables for building the entire set of interceptor sample applications on Windows NT systems.

Directory	File	Description
data_cxx (subdirectory under interceptors_cxx)	InterceptorData.cpp	The InterceptorData C++ source file.
	InterceptorData.h	The InterceptorData class definition file.
	makefile.inc	The generic makefile that uses the macros defined in the appropriate <i>platform.inc</i> file to build the InterceptorData interceptors.
	makefile.mk	The makefile that builds the InterceptorData interceptors on UNIX systems.
	makefile.nt	The makefile that builds the InterceptorData interceptors on Windows NT systems.
simple_cxx (subdirectory under interceptors_cxx)	InterceptorSimp.cpp	The InterceptorSimp C++ source file.
	InterceptorSimp.h	The InterceptorSimp class definition file.
	makefile.inc	The generic makefile that uses the macros defined in the appropriate <i>platform.inc</i> file to build the InterceptorSimp interceptors.
	makefile.mk	The makefile that builds the InterceptorSimp interceptors on UNIX systems.
	makefile.nt	The makefile that builds the InterceptorSimp interceptors on Windows NT systems.
security_cxx (subdirectory under interceptors_cxx)	InterceptorSec.cpp	The InterceptorSec C++ source file.
	InterceptorSec.h	The InterceptorSec class definition file.
	makefile.inc	The generic makefile that uses the macros defined in the appropriate <i>platform.inc</i> file to build the InterceptorSec interceptors.
	makefile.mk	The makefile that builds the InterceptorSec interceptors on UNIX systems.
	makefile.nt	The makefile that builds the InterceptorSec interceptors on Windows NT systems.

Directory	File	Description
common (subdirectory under interceptors_cxx)	app.inc	The file that contains the makefile definitions for the application configuration.
	platform.inc	The file that contains platform-specific make definitions for building the set of interceptor sample applications, where <i>platform</i> represents the system platform for the machine you are using.
	common.mk	The file that contains makefile definitions for UNIX systems.
	makefile.inc	The generic makefile that uses the macros defined in the appropriate <i>platform.inc</i> file.
	makefile.mk	The makefile that builds the entire C++ set of sample application files on UNIX systems.
	makefile.nt	The makefile that builds the entire C++ set of sample application files on NT systems.
	personquery.idl	The OMG IDL file that defines the interfaces for the PersonQuery sample application.

Changing the Protection on PersonQuery Application Files

During the installation of the WebLogic Enterprise software, the sample application files are marked read-only. Before you can edit or build the files in the PersonQuery sample application, you need to change the protection attribute of the files you copied into your work directory, as follows. First make sure you are in the working directory into which you copied the sample application files.

Windows NT

```
prompt>attrib -r /s *.*
```

UNIX

```
prompt>/bin/ksh  
ksh prompt>chmod -R u+w *.*
```

Setting the Environment Variables

Before building and running the PersonQuery sample application, you need to set the environment in which the application runs. To set the environment variables and other property settings needed to build and run the PersonQuery sample application, enter the following command:

Windows NT

```
> setenv.cmd
```

UNIX:

```
> $ . ./setenv.ksh
```

Building the Client and Server Applications

The following command builds the PersonQuery application, creates a machine-specific UBBCONFIG file, and loads the UBBCONFIG file:

Windows NT

```
> nmake -f makefile.nt
```

UNIX

```
$ make -f makefile.mk
```

Note: For convenience, the makefile executed in this step builds the entire C++ set of interceptor samples. This includes the InterceptorSimp, InterceptorSec, and InterceptorData interceptors as well. Details on implementing and building those interceptors, as well as running them with the PersonQuery sample application, are provided in the chapters that follow.

Start the PersonQuery Client and Server Applications

Start the PersonQuery sample application by entering the following command:

```
prompt> tmboot -y
```

Running the PersonQuery Sample Application

A typical usage scenario of the PersonQuery sample application involves the following steps:

1. Enter a query command for one feature, and check for number of returned items, for example:

```
Option? hair brown eyes blue
```

2. Enter additional query data about the feature queried in the preceding step.
3. Continue queries until all the query data is narrowed down to a desirable level.
4. Enter the `result` command to see the final query result.
5. Start a new query cycle.
6. Enter the `exit` command to quit from the application.

Stopping the PersonQuery Sample Application

To stop the PersonQuery sample application, enter the following command:

```
prompt>tmshutdown -y
```

Building and Running the Java RLI Sample Applications

If you want to run the Java RLI sample applications provided with the WebLogic Enterprise software, make sure you have completed all the steps described in the section “Building and Running the PersonQuery Sample Application” on page 5-8 before you complete any of the steps described in the procedure that follows. The Java RLI sample application is a server-side-only implementation, and it uses the C++ PersonQuery client application, which needs to be built so that the Java RLI sample applications can work.

To build and run the PersonQuery sample application:

1. Copy the files for the Java PersonQuery samples into a work directory.
2. Change the protection on the files for the Java PersonQuery samples.
3. Set the environment variables.
4. Build the server sample applications.
5. Start the PersonQuery client and server applications.
6. Stop the PersonQuery sample application.

Copying the Files for the Java PersonQuery Samples

The Java request-level interceptor sample application files are located in the following directory:

```
$TUXDIR\samples\corba\interceptors_java
```

To create a copy of these files so that you can build them and run them, do the following:

1. Create a working directory into which to copy the sample files.
2. Copy the `interceptors_java` samples to the working directory created in the previous step:

Windows NT

```
> xcopy /s/i %TUXDIR%\samples\corba\interceptors_java <workingdirectory>\java
```

UNIX

```
> cp -R $TUXDIR/samples/corba/interceptors_java <workingdirectory>/java
```

3. Change to the directory containing the sample files:

Windows NT

```
> cd <workingdirectory>\java
```

UNIX

```
> cd <workingdirectory>/java
```

You will use the files listed and described in Table 5-2.

Table 5-3 Files Included in the Java Interceptors Sample Directory

Directory	File	Description
interceptors_java	Readme.txt	The file that provides the latest information about building and running the set of Java interceptor sample applications.
	makefile.mk	The makefile for building the Java interceptor sample applications (the Java PersonQuery server application and the sample interceptor) on UNIX systems.
	makefile.nt	The makefile for building the Java interceptor sample applications (the Java PersonQuery server application and the sample interceptor) on NT systems.
	setenv.ksh	The shell file that sets all the required environment variables for building the Java interceptor samples on UNIX systems.
	setenv.cmd	The command file that sets all the required environment variables for building the Java samples on Windows NT systems.
	Query.idl	Contains the Object Management Group (OMG) Interface Definition Language (IDL) file for the PersonQuery application.
	Query.xml	Contains the Server Description File for the PersonQuery server application.
	ServerImpl.java	Contains the implementation of the Server object for the PersonQuery server application.
	QueryFactoryImpl.java	Contains the implementation of the PersonQuery factory object.
	PersonQueryImpl.java	Contains the implementation of the PersonQuery application interfaces.

Directory	File	Description
DataPackage (subdirectory under interceptors_java)	InterceptorData.java	Contains the implementation of the Java InterceptorData sample interceptor.
SimplePackage (subdirectory under interceptors_java)	InterceptorSimple. java	Contains the implementation of the Java InterceptorSimple sample interceptor.
SecurityPackage (subdirectory under interceptors_java)	InterceptorSecurity. java	Contains the implementation of the Java InterceptorSecurity sample interceptor.

Changing the Protection on PersonQuery Application Files

During the installation of the WebLogic Enterprise software, the sample application files are marked read-only. Before you can edit or build the files in the Java PersonQuery sample application, you need to change the protection attribute of the files you copied into your work directory, as follows. First make sure you are in the working directory containing the sample files you copied.

Windows NT

```
prompt>attrib -r /s *.*
```

UNIX

```
prompt>/bin/ksh  
ksh prompt>chmod -R u+w *.*
```

Setting the Environment Variables

Before building and running the Java PersonQuery server application, you need to set the environment in which the application runs. To set the environment variables and other property settings needed to build and run the PersonQuery server application, enter the following command:

Windows NT

```
> setenv.cmd
```

UNIX

```
> $ . ./setenv.ksh
```

Building the Server Application

The following command builds the Java PersonQuery server application, creates a machine-specific UBBCONFIG file, and loads the UBBCONFIG file:

Windows NT

```
> nmake -f makefile.nt
```

UNIX

```
$ make -f makefile.mk
```

Note: For convenience, the makefile executed in this step builds the set of Java RLI samples. This includes the Java InterceptorSimp, InterceptorSec, and InterceptorData interceptors as well as the Java PersonQuery server application. Details on implementing and building those interceptors, as well as running them with the PersonQuery client application, are provided in the chapters that follow.

Start the PersonQuery Client and Server Applications

Start the PersonQuery sample application by entering the following command:

```
prompt> tmbboot -y
```

Note: The Java PersonQuery server application uses the C++ PersonQuery client application.

Running the PersonQuery Sample Application

A typical usage scenario of the PersonQuery sample application involves the following steps:

1. Using the C++ PersonQuery client application, enter a query command for one feature, and check for number of returned items, for example:

Option? **hair brown eyes blue**

2. Enter additional query data about the feature queried in the preceding step.
3. Continue queries until all the query data is narrowed down to a desirable level.
4. Enter the `result` command to see the final query result.
5. Start a new query cycle.
6. Enter the `exit` command to quit from the application.

Stopping the PersonQuery Sample Application

To stop the PersonQuery sample application, enter the following command:

```
prompt>tmshutdown -y
```


6 InterceptorSimp

Sample Interceptors

This topic includes the following sections:

- How the PersonQuery Sample Interceptors Work
- Registering and Running the PersonQuery Interceptors
- Examining the Output of the Interceptors
- Unregistering the Interceptors

Before trying out the steps described in this chapter, make sure you have completed all the steps described in Chapter 5, “PersonQuery Sample Application.”

Note: The WebLogic Enterprise software provides C++ versions of both the client and target InterceptorSimp sample interceptors. However, only the target-side InterceptorSimp sample interceptor is provided in Java; there is no Java version of the client-side InterceptorSimp sample interceptor.

How the PersonQuery Sample Interceptors Work

The `InterceptorSimp` sample interceptor shows how the operation in a request passed to an interceptor can be accessed via a `RequestContext` object. When `InterceptorSimp` intercepts a request, the interceptor does the following:

- Writes the operation name out to a data file, but does not interpret or modify the parameters in the request
- Returns appropriate status from the interceptor methods

Assuming a successful call to the interceptor, the client invocation is passed onto the target object and serviced in the usual way. Thus the `InterceptorSimp` interceptor samples show the following:

- An implementation of a basic monitoring service, which simply tracks each operation on the target object that has been invoked.
- How an interceptor can identify the operation contained in the request by accessing the parameters passed by the ORB to the interceptor methods

The `InterceptorSimp` sample interceptor also shows two different interceptors being defined and registered, but implemented in a single source file. In this example, the client and target interceptors are registered separately, with the client interceptor initialized first.

Registering and Running the PersonQuery Interceptors

When you run the makefile that builds the PersonQuery sample application in Chapter 5, “PersonQuery Sample Application,” the entire set of sample interceptors are built as well, including the `InterceptorSimp` interceptor. This section describes how to register the C++ and Java versions of the `InterceptorSimp` interceptor so that it works with PersonQuery application at run time.

This section is presented in two parts: one for C++, and one for Java.

Registering and Running the C++ Interceptors

To register and run the C++ InterceptorSimp client and server interceptors:

1. Change directory to the InterceptorSimp sample directory, where *workdirectory* represents the name of the directory into which you copied the interceptor sample applications in Chapter 5, “PersonQuery Sample Application.”

Windows NT

```
> cd <workdirectory>\cxx\simple_cxx
```

UNIX

```
$ cd <workdirectory>/cxx/simple_cxx
```

2. Register the interceptor:

Windows NT

```
> nmake -f makefile.nt config
```

UNIX

```
$ make -f makefile.mk config
```

3. Boot the server and run the client:

Windows NT

```
> cd <workdirectory>\cxx\app_cxx
> tmboot -y
> PersonQueryClient
```

UNIX

```
> cd <workdirectory>/cxx/app_cxx
> tmboot -y
> PersonQueryClient
```

4. Perform any number of invocations using the PersonQuery client application, using the command syntax described in Chapter 5, “PersonQuery Sample Application.”
5. Stop the PersonQuery application:

```
> tmshutdown -y
```

Registering and Running the Java Interceptors

To register the Java InterceptorSimp server interceptor:

1. Change directory to the one into which you copied the Java interceptor sample applications in Chapter 5, “PersonQuery Sample Application:”

Windows NT

```
> cd <workdirectory>\java
```

UNIX

```
$ cd <workdirectory>/java
```

2. Register the interceptor:

Windows NT

```
> .\registerAll.cmd
```

UNIX

```
$ chmod u+x registerAll.ksh
```

```
$ ./registerAll.ksh
```

3. Boot the server and run the C++ client:

Windows NT

```
> tmboot -y  
> cd <workdirectory>\cxx\app_cxx  
> PersonQueryClient
```

UNIX

```
> tmboot -y  
> cd <workdirectory>/cxx/app_cxx  
> PersonQueryClient
```

4. Perform any number of invocations using the PersonQuery client application, using the command syntax described in Chapter 5, “PersonQuery Sample Application.”

5. Stop the PersonQuery application:

```
> tmshutdown -y
```

Examining the Output of the Interceptors

Because of the way in which the sample interceptors were implemented, the location and format of the interceptor output is different between the C++ and Java interceptors.

For C++

The output from the C++ simple client interceptor is in files named with the following syntax:

```
InterceptorSimpClientxxxx.out
```

In the preceding syntax line, `xxxx` represents the process ID of the executable within which the interceptor ran. For example, there are three `InterceptorSimpClientxxx.out` files; one each for the following:

- The FactoryFinder, TMFFNAME
- The PersonQueryServer
- The PersonQueryClient

The content of each file varies according to how the ORB interacted with the executable. For example, target interceptors run on servers and client interceptors run on clients, so the `InterceptorSimpClient` log files typically have very little output from the Simple target interceptor, but it has more output from the client interceptor.

For Java

The Java `InterceptorSimp` sample interceptor, which is implemented on the target side only, sends its output to the `ULOG` file, as in the following example:

```
134040.ICEAXE!JavaServer.221: main: InterceptorSimple0,
InterceptorSimple.target_invoke
134040.ICEAXE!JavaServer.221: main: Request Id = 6
134040.ICEAXE!JavaServer.221: main: Response flags = RESPONSE EXPECTED
134040.ICEAXE!JavaServer.221: main: Interface Id =
IDL:beasys.com/PersonQuery:1.0
134040.ICEAXE!JavaServer.221: main: Operation = findPersonBySS
134040.ICEAXE!JavaServer.221: main: KeyAddr address disposition, size = 84
134040.ICEAXE!JavaServer.221: main: KeyAddr address disposition object key =
01424541080101010c000000706572736f6e517565727900020000001f00000049444c3a6265
617379732e636f6d2f506572736f6e51756572793a312e3000000c000000506572736f6e5175
```

6572790000000000

Unregistering the Interceptors

After you have run the PersonQuery sample application with the InterceptorSimp sample interceptors, you can unregister those interceptors using the following steps:

1. Shut down all running WebLogic Enterprise applications by entering the following command:

```
> tmshutdown -y
```
2. Unregister the interceptors as described in the language-specific sections that follow.

Unregistering the C++ Interceptors

To unregister the C++ InterceptorSimp client and server interceptors:

1. Change directory to the InterceptorSimp sample directory, where *workdirectory* represents the name of the directory into which you copied the interceptor sample applications in Chapter 5, “PersonQuery Sample Application:”

Windows NT

```
> cd <workdirectory>\cxx\simple_cxx
```

UNIX

```
$ cd <workdirectory>/cxx/simple_cxx
```

2. Unregister the interceptors:

Windows NT

```
> nmake -f makefile.nt unconfig
```

UNIX

```
$ make -f makefile.mk unconfig
```

Unregistering the Java Interceptors

To unregister the Java InterceptorSimp server interceptor:

1. Change directory to the one into which you copied the Java interceptor sample applications in Chapter 5, “PersonQuery Sample Application:”

Windows NT

```
> cd <workdirectory>\java
```

UNIX

```
$ cd <workdirectory>/java
```

2. Unregister the interceptor:

Windows NT

```
> .\unregisterAll.cmd
```

UNIX

```
$ chmod u+x unregisterAll.ksh  
$ ./unregisterAll.ksh
```


7 InterceptorSec Sample Interceptors

This topic includes the following sections:

- How the PersonQuery Sample Interceptors Work
- Registering and Running the PersonQuery Interceptors
- Examining the Interceptor Output
- Unregistering the Interceptors

Before trying out the steps described in this chapter, make sure you have completed all the steps described in Chapter 5, “PersonQuery Sample Application.”

Note: The WebLogic Enterprise software provides C++ versions of both the client and target InterceptorSec sample interceptors. However, only the target-side InterceptorSec sample interceptor is provided in Java; there is no Java version of the client-side InterceptorSec sample interceptor.

How the PersonQuery Sample Interceptors Work

The InterceptorSec sample interceptors show a simple client/server interceptor pair that implement a basic security model. The `InterceptorSec` client-side interceptor simply logs each client request that is handled by the ORB. The `InterceptorSec`

target-side interceptor implements a simple security mechanism that checks to see whether the user of the client application is authorized to perform the operation in the request.

The C++ InterceptorSec sample interceptors show the client and target interceptor pair initialized through a single initialization function and implemented in a single library. Since a single initialization function is called, the interceptor registration command registers one initialization function and one implementation library.

(The Java InterceptorSec sample interceptor is implemented on the target-side only.)

How the InterceptorSec Target-side Interceptor Works

When the target-side ORB receives a request, the ORB calls the InterceptorSec target-side interceptor and passes the `RequestContext` and `DataInputStream` objects from the client request.

The target-side interceptor then does the following to authorize the user of the client application for the operation contained in the request:

1. Checks to see if the request is an invocation on the `PersonQuery` interface. If it is not, the interceptor returns a `INVOKE_NO_EXCEPTION`.
2. If the operation contained in the request is an invocation on the `PersonQuery` interface, the interceptor:
 - a. Obtains a reference to the `SecurityCurrent` object, which the interceptor then narrows.
 - b. Invokes the `SecurityContext` object, requesting the attribute list for the user of the client application.
 - c. Walks through the attribute list to obtain two attributes:

<code>PrimaryGroupId</code>	Identifies the client name of the user of the client application. In this interceptor, the client name must contain either the character <code>r</code> or a NULL string.
<code>AccessId</code>	Identifies the user of the client application. In this interceptor, the user name must have the characters <code>R</code> , <code>P</code> , or <code>N</code> (either upper- or lowercase).

- d. Matches the user against the `PrimaryGroupId` and the `AccessId`. If the user successfully matches the criteria for these two attributes, the interceptor returns `INVOKE_NO_EXCEPTION`.
- e. If no match is found, the interceptor returns `REPLY_EXCEPTION`, which prevents the request from being sent to the target object. Instead, the ORB returns an exception to the client application.

The sections that immediately follow discuss interceptor security topics and show code fragments of interest from both the C++ and Java versions of the `InterceptorSec` target-side interceptor.

Using the `SecurityCurrent` Object

Interceptors obtain the `SecurityCurrent` object from the ORB, not from the Bootstrap object. The `SecurityCurrent` object available from the ORB has the API that interceptors need for obtaining information about the client.

To obtain the `SecurityCurrent` object, your interceptors can invoke the `resolve_initial_references("SecurityCurrent")` operation on the ORB. The interceptor can then narrow the `SecurityCurrent` reference to a `SecurityCurrentLevel1` current.

Obtaining the `SecurityCurrent` Object

The current JavaServer ORB provides equivalent functionality to the C++ ORB with regards to a proprietary `SecurityCurrent` object in the server process. The `SecurityCurrent` object is available only through the ORB, and this object's primary functionality is to provide server applications access to attributes related to the client invocation.

The ORB's `resolve_initial_references("SecurityCurrent")` method provides the interceptor a reference to a `SecurityCurrent` object from which the interceptor is provided with Level 1 Security functionality. The interceptor can obtain the attributes of the client invocation via the `get_attributes` method on the `SecurityCurrent` object, which returns an attribute list to the interceptor. The attribute

list contains the attributes that pertain to the user of the client application that performed the invocation being intercepted. The behavior of any and all methods from the CORBA security service is still the same, with the exceptions noted above.

The following code fragments show obtaining the SecurityCurrent object.

C++

```
try
{
    sec_current = m_orb->resolve_initial_references("SecurityCurrent");
}
catch (...)
{
    *m_outfile <<
        "ERROR: ORB::resolve_initial_references threw exception"
        << endl << endl << flush;
    excep_val = new CORBA::UNKNOWN();
    return Interceptors::REPLY_EXCEPTION;
}
if (CORBA::is_nil(sec_current.in()))
{
    *m_outfile << "ERROR: No SecurityCurrent present"
        << endl << endl << flush;
    excep_val = new CORBA::NO_PERMISSION();
    return Interceptors::REPLY_EXCEPTION;
}

m_security_current = SecurityLevel1::Current::_narrow(sec_current.in());
if (!m_security_current)
{
    *m_outfile << "ERROR: Couldn't narrow security
        current to SecurityLevel1::Current"
        << endl << endl << flush;
    excep_val = new CORBA::NO_PERMISSION();
    return Interceptors::REPLY_EXCEPTION;
}
```

Java

```
try
{
    org.omg.CORBA.Object secCurObjRef =
        theOrb.resolve_initial_references("SecurityCurrent");
    if(secCurObjRef == null)
    {
        TP.userlog("ERROR: No SecurityCurrent present");
        excep_val.value = new NO_PERMISSION();
        return InvokeReturnStatus.REPLY_EXCEPTION;
    }
}
```

```
    }
    securityCurrent =
        org.omg.SecurityLevel1.CurrentHelper.narrow(secCurObjRef);
}
catch(Exception ex)
{
    TP.userlog("ERROR: ORB.resolve_initial_references
               threw exception");
    excep_val.value = new UNKNOWN();
    return InvokeReturnStatus.REPLY_EXCEPTION;
}
```

Creating the List of User Attributes

The code fragments in this section show how the `InterceptorSec` target-side interceptor creates a list of user attributes and then walks through this list to determine if the user matches the authorization criteria.

C++

In the C++ version of the `InterceptorSec` sample, creating the list of attributes, then walking through them are done in separate steps. Note that if you specify a client attribute list length of zero (0) to be returned, the `SecurityCurrent` object returns all the attributes for the client.

```
// Get the attributes that correspond to the information that we need to
// do an authorization check:
//      PrimaryGroupId (clientname of the logged in client)
//      AccessId (username of the logged in client)
Security::AttributeList_var client_attr = 0;
try
{
    client_attr = m_security_current->get_attributes(*m_attributes_to_get);
```

The following fragment shows creating the list.

```
Security::AttributeTypeList_var attr = new Security::AttributeTypeList(2);
if (!attr.ptr())
{
    cout <<
        "ERROR: can't allocation security list: Out of memory"
        << endl << endl << flush;
    return;
}
attr.inout().length(2);
```

```

attr[(CORBA::ULong)0].attribute_family.family_definer = 0;
attr[(CORBA::ULong)0].attribute_family.family = 1;
attr[(CORBA::ULong)0].attribute_type = Security::PrimaryGroupId;
attr[(CORBA::ULong)1].attribute_family.family_definer = 0;
attr[(CORBA::ULong)1].attribute_family.family = 1;
attr[(CORBA::ULong)1].attribute_type = Security::AccessId;
m_attributes_to_get = attr._retn();
return;

```

The following fragment shows walking through the attribute list to check whether the user matches the authorization criteria:

```

if (client_attr[i].attribute_type.attribute_type == Security::PrimaryGroupId)
{
    //
    // This attribute is the client name.
    // Compare to some client name value.
    // For this example, we're going to accept anything with
    // an 'r' in it, or a NULL string. You will want to compare
    // the client name to some set of values you have authorized.
    //
    if ((strlen(value_buffer) == 0) ||
        (strchr(value_buffer, 'r') != 0))
    {
        *m_outfile << "    INFO: Valid client name found: "
            << value_buffer << endl;
        clientname_ok = 1;
    }
    else
    {
        *m_outfile << "    ERROR: Invalid client name found: "
            << value_buffer << endl;
    }
}
else if (client_attr[i].attribute_type.attribute_type == Security::AccessId)
{
    // This attribute is the user name. We're arbitrarily
    // choosing to authorize anyone who has an 'r', 'n', or 'p'
    // in their user id. You will likely want to choose
    // some other criteria for authorization.
    //
    if ((strchr(value_buffer, 'r') != 0) ||
        (strchr(value_buffer, 'R') != 0) ||
        (strchr(value_buffer, 'P') != 0) ||
        (strchr(value_buffer, 'p') != 0) ||
        (strchr(value_buffer, 'N') != 0) ||
        (strchr(value_buffer, 'n') != 0))
    {
        *m_outfile << "    INFO: Valid username found: "

```

```
        << value_buffer << endl;
    username_ok = 1;
}
```

Java

In Java version of this sample, creating the attribute list and then verifying its contents is done in a single step, as in the following code fragment. Note that if you specify a null argument in the invocation to the `get_attributes` method, the `SecurityCurrent` returns all the attributes for the client.

```
org.omg.Security.SecAttribute clientAttributes[];
try
{
    clientAttributes = securityCurrent.get_attributes(null);
}
.
.
.
if((clientAttributes == null ) || (clientAttributes.length == 0))
{
    // This condition short-circuits the invocation, because it
    // returns an exception on the reply.
    TP.userlog("ERROR: Security attributes not retrieved");
    excep_val.value = new NO_PERMISSION();
    return InvokeReturnStatus.REPLY_EXCEPTION;
}

boolean groupFlag = false;
for(int i = 0; i < clientAttributes.length; i++)
{
    /**
     * The verification depends upon what type of attribute this
     * element contains.
     */
    if(clientAttributes[i].attribute_type.attribute_type ==
        org.omg.Security.PrimaryGroupId.value)
    {
        /**
         * This attribute is the client name.
         * Compare to some client name value.
         * For this example, we're going to accept anything with
         * an 'r' in it, or a NULL string. You will want to compare
         * the client name to some set of values you have authorized.
         */
        for(int j = 0; j < clientAttributes[i].value.length; j++)
        {
```

```

        char ch = (char) clientAttributes[i].value[j];
        TP.userlog("Client name value[" + j + "] = " + ch);
        if((ch == 'r') || (ch == 'R') ||
            (ch == 'p') || (ch == 'P'))
        {
            groupFlag = true;
            TP.userlog("INFO: Valid Client Name Found");
        }
    }
    if(!groupFlag)
        TP.userlog("INFO: No Valid Client Name Found");
}
else if(clientAttributes[i].attribute_type.attribute_type ==
        org.omg.Security.AccessId.value)
{
    /**
     * This attribute is the user name. We're arbitrarily
     * choosing to authorize anyone who has an 'r', 'n', or 'p'
     * in their user id. You will likely want to choose
     * some other criteria for authorization.
     */
    for(int j = 0; j < clientAttributes[i].value.length; j++)
    {
        char ch = (char) clientAttributes[i].value[j];
        TP.userlog("Access Id value[" + j + "] = " + ch);
        if((ch == 'r') || (ch == 'R') ||
            (ch == 'p') || (ch == 'P') ||
            (ch == 'n') || (ch == 'N'))
        {
            userFlag = true;
            TP.userlog("INFO: Valid User Id Found");
        }
    }
    if(!userFlag)
        TP.userlog("INFO: No Valid User Id Found");
}
}
}

```

Registering and Running the PersonQuery Interceptors

When you run the makefile that builds the PersonQuery sample application in Chapter 5, “PersonQuery Sample Application,” the entire set of sample interceptors are built as well, including the InterceptorSec interceptor. This section describes how to register the InterceptorSec interceptor so that it works with PersonQuery application at run time.

This section is presented in two parts: one for C++, and one for Java.

Registering and Running the C++ Interceptors

To register and run the C++ InterceptorSec client and server interceptors:

1. Change directory to the InterceptorSec sample directory, where *workdirectory* represents the name of the directory into which you copied the interceptor sample applications in Chapter 5, “PersonQuery Sample Application:”

Windows NT

```
> cd <workdirectory>\cxx\security_cxx
```

UNIX

```
$ cd <workdirectory>/cxx/security_cxx
```

2. Register the interceptor:

Windows NT

```
> nmake -f makefile.nt config
```

UNIX

```
$ make -f makefile.mk config
```

3. Boot the server and run the client:

Windows NT

```
> cd <workdirectory>\cxx\app_cxx
> tmboot -y
> PersonQueryClient
```

UNIX

```
> cd <workdirectory>/cxx/app_cxx
> tmboot -y
> PersonQueryClient
```

4. Perform any number of invocations using the PersonQuery client application, using the command syntax described in Chapter 5, “PersonQuery Sample Application.”
5. Stop the PersonQuery application:

```
> tmshutdown -y
```

Registering and Running the Java Interceptors

To register the Java InterceptorSec server interceptor:

1. Change directory to the one into which you copied the Java interceptor sample applications in Chapter 5, “PersonQuery Sample Application:”

Windows NT

```
> cd <workdirectory>\java
```

UNIX

```
$ cd <workdirectory>/java
```

2. Register the interceptor:

Windows NT

```
> .\registerAll.cmd
```

UNIX

```
$ chmod u+x registerAll.ksh
$ ./registerAll.ksh
```


3. Boot the server and run the C++ client:

Windows NT

```
> tmboot -y
> cd <workdirectory>\cxx\app_cxx
> PersonQueryClient
```

UNIX

```
> tmboot -y
> cd <workdirectory>/cxx/app_cxx
> PersonQueryClient
```

4. Perform any number of invocations using the PersonQuery client application, using the command syntax described in Chapter 5, “PersonQuery Sample Application.”
5. Stop the PersonQuery application:

```
> tmshutdown -y
```

Examining the Interceptor Output

Because of the way in which the sample interceptors were implemented, the location and format of the interceptor output is different between the C++ and Java interceptors.

For C++

The C++ InterceptorSec client and target interceptors log their output to the files named, respectively, `InterceptorSecClientxxx.out` and `InterceptorSecTargetxxx.out`. These files contain debugging output from the interceptors that is automatically loaded and executed by the ORB for the PersonQuery application.

For Java

The Java InterceptorSec target-side interceptor sends its output to the ULOG file, as in the following example:

```
134040.ICEAXE!JavaServer.221: main: InterceptorSecurity0,
InterceptorSecurity.target_invoke
134040.ICEAXE!JavaServer.221: main: Group Id value[0] = I
134040.ICEAXE!JavaServer.221: main: Group Id value[1] = I
134040.ICEAXE!JavaServer.221: main: Group Id value[2] = O
134040.ICEAXE!JavaServer.221: main: Group Id value[3] = P
134040.ICEAXE!JavaServer.221: main: INFO: Valid Group Id Found
134040.ICEAXE!JavaServer.221: main: Group Id value[4] =
134040.ICEAXE!JavaServer.221: main: Group Id value[5] = c
134040.ICEAXE!JavaServer.221: main: Group Id value[6] = l
134040.ICEAXE!JavaServer.221: main: Group Id value[7] = i
134040.ICEAXE!JavaServer.221: main: Group Id value[8] = e
134040.ICEAXE!JavaServer.221: main: Group Id value[9] = n
134040.ICEAXE!JavaServer.221: main: Group Id value[10] = t
134040.ICEAXE!JavaServer.221: main: Access Id value[0] = I
134040.ICEAXE!JavaServer.221: main: Access Id value[1] = I
134040.ICEAXE!JavaServer.221: main: Access Id value[2] = O
134040.ICEAXE!JavaServer.221: main: Access Id value[3] = P
134040.ICEAXE!JavaServer.221: main: INFO: Valid User Id Found
134040.ICEAXE!JavaServer.221: main: Access Id value[4] =
134040.ICEAXE!JavaServer.221: main: Access Id value[5] = c
134040.ICEAXE!JavaServer.221: main: Access Id value[6] = l
134040.ICEAXE!JavaServer.221: main: Access Id value[7] = i
134040.ICEAXE!JavaServer.221: main: Access Id value[8] = e
134040.ICEAXE!JavaServer.221: main: Access Id value[9] = n
134040.ICEAXE!JavaServer.221: main: INFO: Valid User Id Found
134040.ICEAXE!JavaServer.221: main: Access Id value[10] = t
```

Unregistering the Interceptors

After you have run the PersonQuery sample application with the InterceptorSec sample interceptors, you can unregister those interceptors using the following steps:

1. Shut down all running WebLogic Enterprise applications by entering the following command:

```
> tmsshutdown -y
```
2. Unregister the interceptors as described in the language-specific sections that follow.

Unregistering the C++ Interceptors

To unregister the C++ InterceptorSec client and server interceptors:

1. Change directory to the InterceptorSec sample directory, where *workdirectory* represents the name of the directory into which you copied the interceptor sample applications in Chapter 5, “PersonQuery Sample Application:”

Windows NT

```
> cd <workdirectory>\cxx\security_cxx
```

UNIX

```
$ cd <workdirectory>/cxx/security_cxx
```

2. Unregister the interceptors:

Windows NT

```
> nmake -f makefile.nt unconfig
```

UNIX

```
$ make -f makefile.mk unconfig
```

Unregistering the Java Interceptors

To unregister the Java InterceptorSec server interceptor:

1. Change directory to the one into which you copied the Java interceptor sample applications in Chapter 5, “PersonQuery Sample Application:”

Windows NT

```
> cd <workdirectory>\java
```

UNIX

```
$ cd <workdirectory>/java
```

2. Unregister the interceptor:

Windows NT

```
> .\unregisterAll.cmd
```

UNIX

```
$ chmod u+x unregisterAll.ksh  
$ ./unregisterAll.ksh
```

8 InterceptorData

Sample Interceptors

This chapter describes the following two sample interceptors that are designed to be used with the PersonQuery sample application:

- `InterceptorDataClient` Interceptor, which is installed on the machine hosting the PersonQuery client component.
- `InterceptorDataTarget` Interceptor, which is installed on the machine hosting the PersonQuery server component.

This chapter explains how each interceptor works, then shows how to build and run them with the PersonQuery sample application.

Note: The WebLogic Enterprise software provides C++ versions of both the client and target `InterceptorData` sample interceptors. However, only the target-side `InterceptorData` sample interceptor is provided in Java; there is no Java version of the client-side `InterceptorData` sample interceptor.

InterceptorDataClient Interceptor

The `InterceptorDataClient` interceptor intercepts and logs each client application request and reply parameters. This interceptor also allows certain operations on the PersonQuery server application to be invoked by users of the client application who meet specific criteria. The `InterceptorDataClient` interceptor implements the `InterceptorDataClient` interface, which inherits from the `ClientRequestInterceptor` class.

The `InterceptorDataClient` class implements the methods as follows:

- `id()`

This method returns the string `InterceptorDataClient`.

- `shutdown()`

This method removes the request from the `tracker` object.

- `exception_occurred()`

When invoked by the ORB, this method removes the request from the `tracker` object.

- `client_invoke()`

This method determines if the interface and operation are “of interest.” If the client request is “of interest,” this method parses the request parameters and outputs the parameters to the log file. If the client request is not “of interest,” this method simply returns.

- `client_response()`

This method determines if the interface and operation in the request are “of interest.” If the interface and operation are “of interest,” this method walks through the `CORBA DataInputStream` parameter to obtain the reply parameters and write them to the log file. If the interface and operation in the request are not “of interest,” this method simply returns.

In addition, the data interceptor provides the `InterceptorDataClientInit` method to initialize the client interceptor class.

InterceptorDataTarget Interceptor

The `InterceptorDataTarget` interceptor intercepts and logs request and reply data parameters. This interceptor also removes sensitive data from specific reply parameters by masking the data with `x` characters. The `InterceptorDataTarget` interceptor implements the `InterceptorDataTarget` interface, which inherits from the `TargetRequestInterceptor` class.

The `InterceptorDataTarget` class implements the methods as follows:

- `id()`

This method returns the string `InterceptorDataTarget`.

- `shutdown()`

This method simply returns.

- `exception_occurred()`

This method removes the request from the `tracker` object.

- `target_invoke()`

This method determines if the interface and operation are “of interest.” If so, this method parses the request parameters and outputs that data to the log file. If the interface and operation in the request are not “of interest,” this method simply returns. If the operation in the request is `exit`, this method returns the status value `INVOKE_NO_EXCEPTION`.

- `target_response()`

This method determines if the interface and operation are “of interest.” If so, this method walks through the `DataStream` parameter to obtain the response parameters and output to the log file. Sensitive data items are substituted in the log. For example, a person’s social security number will not be output to the log. If the interface and operation in the request are not “of interest,” this method simply returns.

In addition, the data interceptor provides the `InterceptorDataTargetInit` method to initialize the target interceptor class.

Implementing the InterceptorData Interceptors

Information about the code used to implement the `InterceptorData` interceptors is provided in Chapter 2, “Developing C++ Interceptors,” and Chapter 3, “Developing Java Interceptors.” Refer to those chapters for information about how to do the following:

If you are implementing in C++...	If you are implementing in Java...
“Starting the Implementation File” on page 2-3	“Starting the Implementation File” on page 3-3
“Initializing the Interceptor at Run Time” on page 2-4	“Implementing the Interceptor’s Constructor” on page 3-3
“Obtaining the Interface Name from a Request” on page 2-5	“Obtaining the Interface Name from a Request” on page 3-4
“Identifying Operations in the Request” on page 2-5	“Identifying Operations in the Request” on page 3-5
“Implementing the Interceptor’s Response Operation” on page 2-6	“Implementing the Interceptor’s Response Operation” on page 3-5
“Reading Parameters Out of a Data Input Stream” on page 2-7	“Reading Data Out of a Data Input Stream” on page 3-6

Registering and Running the InterceptorData Interceptors

When you run the makefile that builds the PersonQuery sample application in Chapter 5, “PersonQuery Sample Application,” the entire set of sample interceptors are built as well, including the InterceptorData interceptors. This section describes how to register the InterceptorData interceptor so that it works with PersonQuery application at run time.

This section is presented in two parts: one for C++, and one for Java.

Registering and Running the C++ Interceptors

To register and run the C++ InterceptorData client and server interceptors:

1. Change directory to the InterceptorData sample directory, where *workdirectory* represents the name of the directory into which you copied the interceptor sample applications in Chapter 5, “PersonQuery Sample Application.”

Windows NT

```
> cd <workdirectory>\cxx\data_cxx
```

UNIX

```
$ cd <workdirectory>/cxx/data_cxx
```

2. Register the interceptor:

Windows NT

```
> nmake -f makefile.nt config
```

UNIX

```
$ make -f makefile.mk config
```

3. Boot the server and run the client:

Windows NT

```
> cd <workdirectory>\cxx\app_cxx
> tmboot -y
> PersonQueryClient
```

UNIX

```
> cd <workdirectory>/cxx/app_cxx
> tmboot -y
> PersonQueryClient
```

4. Perform any number of invocations using the PersonQuery client application, using the command syntax described in Chapter 5, “PersonQuery Sample Application.”
5. Stop the PersonQuery application:

```
> tmshutdown -y
```

Registering and Running the Java Interceptors

To register and run the Java InterceptorData server interceptor:

1. Change directory to the one into which you copied the Java interceptor sample applications in Chapter 5, “PersonQuery Sample Application:”

Windows NT

```
> cd <workdirectory>\java
```

UNIX

```
$ cd <workdirectory>/java
```

2. Register the interceptor:

Windows NT

```
> .\registerAll.cmd
```

UNIX

```
$ chmod u+x registerAll.ksh
```

```
$ ./registerAll.ksh
```

3. Boot the server and run the C++ client:

Windows NT

```
> tmboot -y  
> cd <workdirectory>\cxx\app_cxx  
> PersonQueryClient
```

UNIX

```
> tmboot -y  
> cd <workdirectory>/cxx/app_cxx  
> PersonQueryClient
```

4. Perform any number of invocations using the PersonQuery client application, using the command syntax described in Chapter 5, “PersonQuery Sample Application.”

5. Stop the PersonQuery application:

```
> tmshutdown -y
```

Examining the Interceptor Output

Because of the way in which the sample interceptors were implemented, the location and format of the interceptor output is different between the C++ and Java interceptors.

For C++

The C++ `InterceptorData` client and target interceptors log each invocation. For each `PersonQuery` application session, the client interceptor creates a log file named `InterceptorDataClientxxx.out`, and the target interceptor creates a log file named `InterceptorDataTargetxxx.out`. This section shows sample log file data for each interceptor.

Sample Client Interceptor Log Output

```
InterceptorDataClientInit called
ClientInterceptorData::id called

ClientInterceptorData::client_invoke called
ClientInterceptorData::client_response called
  Request Id:      1
  unable to find request for this reply (must not be one we care about)

ClientInterceptorData::client_invoke called
  Request Id:      2
  Interface:       IDL:beasys.com/PersonQuery:1.0
  Operation:       findPerson
  Parameters:
      name:         ALISTER LANCASHIRE
      address:      3 PENNY LANE
                   LONDON GB UK
      ss:           999-99-9999
      sex:          can't tell
      age(yrs.):    85
      marital status: single
      hobby:        stamp collecting
      date-of-birth: 11/25/1913
      height(in.):  32
      weight(lbs.): 57
      hair color:   unknown
      eye color:    blue
      skin color:   white
      other markings: missing limb
```

Sample Target Interceptor Log Output

```
InterceptorDataTargetInit called
TargetInterceptorData::id called

TargetInterceptorData::target_response called
  Request Id:      2
  ReplyStatus:     GIOP::NO_EXCEPTION
  Interface:       IDL:beasys.com/PersonQuery:1.0
  Operation:       findPerson
  Method Result:   TRUE
  Parameters:
    Maximum: 8
    Length: 8

    Item 0
      name:          ALISTER LANCASHIRE
      address:       3 PENNY LANE
                   LONDON GB UK
      ss:            NO PRIVILEGE
      sex:           NO PRIVILEGE
      age (years):   NO PRIVILEGE
      marital status: NO PRIVILEGE
      hobby:         stamp collecting
      date-of-birth: NO PRIVILEGE
      height (in.):  32
      weight (lbs.): 57
      hair color:    unknown
      eye color:     blue

      skin color:    NO PRIVILEGE
      other markings: missing limb
```

For Java

The Java `InterceptorData` target interceptor logs each invocation. For each `PersonQuery` application session, the interceptor sends its output to the `ULOG` file, as in the following example:

Sample Target Interceptor Log Output

```
134040.ICEAXE!JavaServer.221: main: Process operation findPersonBySS
134040.ICEAXE!JavaServer.221: main: Operation succeeded
134040.ICEAXE!JavaServer.221: main: arg_stream, Possibles count = 2
134040.ICEAXE!JavaServer.221: main: Person [0] =
Name: FRED MURTZ
Address: 436 AMHERST ST. NASHUA, NH USA
SS#: 999-99-9999
Sex: male
```

```
Age: 75
Status: married
Hobby: tv
Date of birth: Jan-1-1924
Height: 62
Weight: 115
Hair Color: black
Eye Color: hazel
Skin Color: black
Other Markings: scar
134040.ICEAXE!JavaServer.221: main: Person [1] =
Name: ALISTER LANCASHIRE
Address: 3 PENNY LANE LONDON, GB UK
SS#: 999-99-9999
Sex: cant_tell
Age: 85
Status: single
Hobby: stamps
Date of birth: Nov-25-1913
Height: 32
Weight: 57
Hair Color: unknown
Eye Color: blue
Skin Color: white
Other Markings: missing_limb
134040.ICEAXE!JavaServer.221: main: Processing operation findPersonBySS complete
```

Unregistering the Interceptors

After you have run the PersonQuery sample application with the InterceptorData sample interceptors, you can unregister those interceptors using the following steps:

1. Shut down all running WebLogic Enterprise applications by entering the following command:

```
> tmsshutdown -y
```
2. Unregister the interceptors as described in the language-specific sections that follow.

Unregistering the C++ Interceptors

To unregister the C++ InterceptorData client and server interceptors:

1. Change directory to the InterceptorData sample directory, where *workdirectory* represents the name of the directory into which you copied the interceptor sample applications in Chapter 5, “PersonQuery Sample Application:”

Windows NT

```
> cd <workdirectory>\cxx\data_cxx
```

UNIX

```
$ cd <workdirectory>/cxx/data_cxx
```

2. Unregister the interceptors:

Windows NT

```
> nmake -f makefile.nt unconfig
```

UNIX

```
$ make -f makefile.mk unconfig
```

Unregistering the Java Interceptors

To unregister the Java InterceptorData server interceptor:

1. Change directory to the one into which you copied the Java interceptor sample applications in Chapter 5, “PersonQuery Sample Application:”

Windows NT

```
> cd <workdirectory>\java
```

UNIX

```
$ cd <workdirectory>/java
```

2. Unregister the interceptor:

Windows NT

```
> .\unregisterAll.cmd
```

UNIX

```
$ chmod u+x unregisterAll.ksh  
$ ./unregisterAll.ksh
```


9 Request-Level Interceptor API

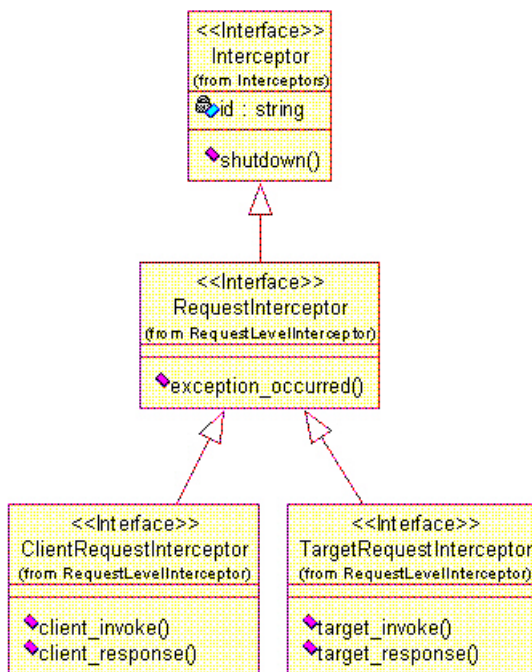
This chapter documents the following interfaces that you use to implement request-level interceptors, along with their C++ and Java language mappings:

- `Interceptors::Interceptor`
- `RequestLevelInterceptor::RequestInterceptor`
- `RequestLevelInterceptor::ClientRequestInterceptor`
- `RequestLevelInterceptor::TargetRequestInterceptor`
- `CORBA::DataInputStream`

Each of these interfaces is a **locality-constrained object**. Any attempt to pass a reference outside its locality (that is, its process), or any attempt to externalize an object supporting this interface using the CORBA ORB `object_to_string` operation, results in the CORBA `MARSHAL` system exception (`CORBA::MARSHAL` in C++, `org.omg.CORBA.MARSHAL` in Java) being raised.

Interceptor Hierarchy

Request-level interceptors are divided into two interfaces, providing separate client- and target-side functionality. The following figure illustrates the inheritance hierarchy of the request-level interceptors supported in WebLogic Enterprise 5.1.



Note on Unused Interfaces

The method signatures for operations on classes derived from the `RequestLevelInterceptor` interface include parameters for the following interfaces:

- **C++:** `RequestLevelInterceptor::DataOutputStream`
Java: `com.beasys.RequestLevelInterceptors.ServiceContextList`
- **C++:** `RequestLevelInterceptor::ServiceContextList`
Java: `com.beasys.RequestLevelInterceptors.ServiceContextList`

These interfaces are not used in the WebLogic Enterprise 5.1 product. However, they are defined in the WebLogic Enterprise 5.1 product so that you do not need to recompile your WebLogic Enterprise application if an implementation of these interfaces is ever provided in a future release of WebLogic Enterprise. The ORB always passes a nil for the actual argument. You should not attempt to use this argument; doing so will likely end the process with a serious error.

The method signatures for the Java mappings to these interfaces include the following classes, which you also do not use but that are reserved for future compatibility:

- `com.beasys.RequestLevelInterceptors.ServiceContextListPackage.NotFound`
- `org.omg.CORBA.ValueBase`
- `org.omg.CORBA.IOP.TaggedProfile`
- `org.omg.CORBA.IOP.TaggedComponent`
- `org.omg.CORBA.IOP.IOR`
- `org.omg.CORBA.GIOP.TargetAddress`
- `org.omg.CORBA.GIOP.KeyAddr`
- `org.omg.CORBA.GIOP.ProfileAddr`
- `org.omg.CORBA.GIOP.ReferenceAddr`
- `org.omg.CORBA.GIOP.IORAddressingInfo`
- `org.omg.CORBA.GIOP.ReplyStatusType_1_2`

Interceptors::Interceptor Interface

The `Interceptors::Interceptor` interface is defined as the base interface of all types of interceptors, including request-level interceptors. This interface contains the set of operations and attributes that are supported by all types of interceptors. The `Interceptors::Interceptor` interface is defined as an abstract interface; thus an instance of the interface can not be instantiated.

Listing 9-1 OMG IDL for the `Interceptors::Interceptor` Interface

```
//File: Interceptors.idl
#ifndef _INTERCEPTORS_IDL
#define _INTERCEPTORS_IDL

#pragma prefix "beasys.com"

module Interceptors
{
    native ExceptionValue;

    local Interceptor
    {
        readonly attribute string    id; // identifier of interceptor

        // called by ORB when interceptor is being shutdown
        ShutdownReturnStatus shutdown(
                                in ShutdownReason    reason,
                                out ExceptionValue    excep_val
                                );
    }; // locality constrained
};

#endif /* _INTERCEPTORS_IDL */
```

C++ Language Mapping

In C++, the implementation of the operations `_duplicate`, `_narrow`, and `_nil` are inherited from the implementation of the `CORBA::LocalBase` interface provided by the WebLogic Enterprise ORB.

Listing 9-2 C++ Declaration of the Interceptors::Interceptor Interface

```
#ifndef _INTERCEPTORS_H
#define _INTERCEPTORS_H

#include <string.h>
#include <CORBA.h>

class OBBEXPDDL Interceptors
{
public:
    class Interceptor;
    typedef Interceptor * Interceptor_ptr;

    enum InvokeReturnStatus
    {
        INVOKE_NO_EXCEPTION, // proceed normally
        REPLY_NO_EXCEPTION, // stop proceeding; start reply processing
        REPLY_EXCEPTION      // stop proceeding; reply with exception
    };

    enum ResponseReturnStatus
    {
        RESPONSE_NO_EXCEPTION, // proceed normally
        RESPONSE_EXCEPTION
    };

    enum ShutdownReturnStatus
    {
        SHUTDOWN_NO_EXCEPTION,
        SHUTDOWN_EXCEPTION
    };

    enum ShutdownReason
    {
        ORB_SHUTDOWN,
        CONNECTION_ABORTED,
        RESOURCES_EXCEEDED
    };

    struct Version
    {
        CORBA::Octet    major_version;
        CORBA::Octet    minor_version;
    };
    typedef Version *    Version_ptr;

    //+
```

```
// Abstract base interface for all Interceptors
// -
class OBBEXPDDL Interceptor : public virtual CORBA::LocalBase
{
public:
    static Interceptor_ptr _duplicate(Interceptor_ptr obj);
    static Interceptor_ptr _narrow(Interceptor_ptr obj);
    static Interceptor_ptr _nil();
    virtual ShutdownReturnStatus
        shutdown( ShutdownReason reason,
                  CORBA::Exception_ptr & excep_val) = 0;
    virtual CORBA::String id() = 0;

protected:
    Interceptor();
    virtual ~Interceptor();
};
#endif /* _INTERCEPTORS_H */
```

Java Language Mapping

This section shows the Java declaration of the `Interceptors::Interceptor` interface, and also shows the Java declarations for the following classes that are used as parameters in the methods on several request-level interceptor classes:

- `com.beasys.Interceptors.Version`
- `com.beasys.Interceptors.InvokeReturnStatus`
- `com.beasys.Interceptors.ResponseReturnStatus`
- `com.beasys.Interceptors.ShutdownReason`

Listing 9-3 Java Declaration of the `Interceptors::Interceptor` Interface

```
package com.beasys.Interceptors;
public interface Interceptor {
    String id();
    ShutdownReturnStatus shutdown(ShutdownReason reason,
                                  org.omg.CORBA.SystemExceptionHolder excep_val);
}
```

Listing 9-4 Java Declaration of the com.beasys.Interceptors.Version Class

```
package com.beasys.Interceptors;
public final class Version {
    // instance variables
    public byte major_version;
    public byte minor_version;
    // constructors
    public Version();
    public Version(byte __major_version, byte __minor_version);
}
```

**Listing 9-5 Java Declaration of the
com.beasys.Interceptors.InvokeReturnStatus Class**

```
package com.beasys.Interceptors;
public final class InvokeReturnStatus {
    public static final int _INVOKE_NO_EXCEPTION = 0,
        _REPLY_NO_EXCEPTION = 1,
        _REPLY_EXCEPTION = 2;
    public static final InvokeReturnStatus INVOKE_NO_EXCEPTION =
        new InvokeReturnStatus(_INVOKE_NO_EXCEPTION);
    public static final InvokeReturnStatus REPLY_NO_EXCEPTION =
        new InvokeReturnStatus(_REPLY_NO_EXCEPTION);
    public static final InvokeReturnStatus REPLY_EXCEPTION =
        new InvokeReturnStatus(_REPLY_EXCEPTION);
    public int value();
    public static final InvokeReturnStatus from_int(int i)
        throws org.omg.CORBA.BAD_PARAM;
}
```

Listing 9-6 Java Declaration of the `com.beasys.Interceptors.ResponseReturnStatus` Class

```
package com.beasys.Interceptors;
public final class ResponseReturnStatus {
    public static final int _RESPONSE_NO_EXCEPTION = 0,
                          _RESPONSE_EXCEPTION = 1;
    public static final ResponseReturnStatus RESPONSE_NO_EXCEPTION =
        new ResponseReturnStatus(_RESPONSE_NO_EXCEPTION);
    public static final ResponseReturnStatus RESPONSE_EXCEPTION =
        new ResponseReturnStatus(_RESPONSE_EXCEPTION);
    public int value();
    public static final ResponseReturnStatus from_int(int i)
        throws org.omg.CORBA.BAD_PARAM;
}
```

Listing 9-7 Java Declaration of the `com.beasys.Interceptors.ShutdownReason` Class

```
package com.beasys.Interceptors;
public final class ShutdownReason {
    public static final int _ORB_SHUTDOWN = 0,
                          _CONNECTION_ABORTED = 1,
                          _RESOURCES_EXCEEDED = 2;
    public static final ShutdownReason ORB_SHUTDOWN =
        new ShutdownReason(_ORB_SHUTDOWN);
    public static final ShutdownReason CONNECTION_ABORTED =
        new ShutdownReason(_CONNECTION_ABORTED);
    public static final ShutdownReason RESOURCES_EXCEEDED =
        new ShutdownReason(_RESOURCES_EXCEEDED);
    public int value();
    public static final ShutdownReason from_int(int i)
        throws org.omg.CORBA.BAD_PARAM;
}
```

Interceptor::id

Synopsis	Obtains the vendor assigned identity of the interceptor as a string value.
C++ Mapping	<code>virtual CORBA::String id() = 0;</code>
Java Binding	<code>String id();</code>
Parameters	None.
Exceptions	None.
Description	The <code>id</code> accessor operation is used by the ORB to obtain the vendor assigned identity of the interceptor as a string value. This attribute is used primarily for debugging and tracing of operations on the interceptors called by the ORB.
Return Values	In C++, this operation returns a pointer to a null-terminated string containing the identity of the interceptor as assigned by the provider of the interceptor implementation. In Java, this operation returns a null-terminated string that represents the name of the interceptor. The ORB is responsible for freeing the memory associated with the return value.

RequestLevelInterceptor::RequestInterceptor Interface

The `RequestLevelInterceptor::RequestInterceptor` interface is the base interface of all request-level interceptors. It inherits directly from the `Interceptors::Interceptor` interface. The `RequestLevelInterceptor::RequestInterceptor` interface:

- Contains the set of operations and attributes that are supported by all request-level interceptors.
- Is defined as an abstract interface; therefore, an instance of the interface cannot be instantiated.

The `local` keyword in OMG IDL indicates that the `RequestInterceptor` interface is not a normal CORBA object, so it cannot be used as such.

Listing 9-8 OMG IDL for the RequestLevelInterceptor::RequestInterceptor Interface

```
#ifndef _REQUEST_LEVEL_INTERCEPTOR_IDL
#define _REQUEST_LEVEL_INTERCEPTOR_IDL

#include <orb.idl>
#include <Giop.idl>
#include <Interceptors.idl>

#pragma prefix "beasys.com"

module RequestLevelInterceptor
{
    local RequestInterceptor : Interceptors::Interceptor
    {
        void exception_occurred(
                                in ReplyContext      reply_context,
                                in ExceptionValue     excep_val
                                );
    };
};

#endif /* _REQUEST_LEVEL_INTERCEPTOR_IDL */
```

C++ Language Mapping

In C++, the implementation of the `RequestInterceptor` interface inherits from `CORBA::LocalBase` rather than from `CORBA::Object`. In C++, `CORBA::LocalBase` provides an implementation of the operations `_duplicate`, `_narrow`, and `_nil`, similar to those of `CORBA::Object`.

Listing 9-9 C++ Declaration for the `RequestInterceptor` Interface

```
#ifndef _RequestLevelInterceptor_h
#define _RequestLevelInterceptor_h

#include <CORBA.h>
#include <IOP.h>
#include <GIOP.h>
#include <Interceptors.h>

class OBBEXPDLL RequestLevelInterceptor
{
public:
    class RequestInterceptor;
    typedef RequestInterceptor * RequestInterceptor_ptr;

    struct RequestContext
    {
        Interceptors::Version struct_version;
        CORBA::ULong request_id;
        CORBA::Octet response_flags;
        GIOP::TargetAddress target;
        CORBA::String_var interface_id;
        CORBA::String_var operation;
        RequestContext &operator=(const RequestContext &obj);
    };

    typedef RequestContext * RequestContext_ptr;
    typedef GIOP::ReplyStatusType_1_2 ReplyStatus;

    struct ReplyContext
    {
        Interceptors::Version struct_version;
        CORBA::ULong request_id;
        ReplyStatus reply_status;
    };
};
```

```
typedef ReplyContext * ReplyContext_ptr;

class OBDEXPDLL RequestInterceptor :
    public virtual Interceptors::Interceptor
{
public:
    static RequestInterceptor_ptr
        _duplicate(RequestInterceptor_ptr obj);
    static RequestInterceptor_ptr
        _narrow(RequestInterceptor_ptr obj);
    inline static RequestInterceptor_ptr _nil() { return 0; }

    virtual void
        exception_occurred( const ReplyContext & reply_context,
                           CORBA::Exception_ptr excep_val) = 0;

protected:
    RequestInterceptor(CORBA::LocalBase_ptr obj = 0) { }
    virtual ~RequestInterceptor(){ }

private:
    RequestInterceptor( const RequestInterceptor&) { }
    void operator=(const RequestInterceptor&) { }
}; // class RequestInterceptor
#endif /* _RequestLevelInterceptor_h */
```

Java Language Mapping

Listing 9-10 Java Declaration for the RequestInterceptor Interface

```
package com.beasys.RequestLevelInterceptor;
public interface RequestInterceptor
    extends com.beasys.Interceptors.Interceptor {
    void exception_occurred(
        com.beasys.RequestLevel.Interceptor.ReplyContext
        reply_context,
        org.omg.CORBA.SystemException excep_val);
}
```

RequestContext Structure

Synopsis Contains the information that represents the context in which a request is to be processed.

C++ Binding

```
struct RequestContext
{
    Interceptors::Version struct_version;
    CORBA::ULong request_id;
    CORBA::Octet response_flags;
    GIOP::TargetAddress target;
    CORBA::String_var interface_id;
    CORBA::String_var operation;
    RequestContext &operator=(const RequestContext &obj);
};
```

Java Binding

```
public final class RequestContext {
    public com.beasys.Interceptors.Version struct_version;
    public int request_id;
    public byte response_flags;
    public org.omg.CORBA.GIOP.TargetAddress target;
    public String interface_id;
    public String operation;
    public RequestContext();
    public RequestContext(
        com.beasys.Interceptors.Version __struct_version,
        int __request_id,
        byte __response_flags,
        org.omg.CORBA.GIOP.TargetAddress __target,
        String __interface_id,
        String __operation);
}
```

Members `struct_version`

An indication of the version of the RequestContext that provides an indication of the format and members. The version information is separated into the following two pieces:

Version Member	Description
<code>major_version</code>	Indicates the major version value. The value of this member is incremented anytime a change is made to the contents or layout of a RequestContext that is not backward compatible with previous versions.

Version Member	Description
minor_version	Indicates the minor version value. The value of this member is incremented anytime a change is made to the contents or layout of a RequestContext that is backward compatible with previous versions.

request_id

An unsigned long value that specifies the identifier assigned to a request by the initiating ORB.

response_flags

The lowest order bit of `response_flags` is set to 1 if a reply message is expected for this request. If the operation is not defined as `oneway`, and the request is not invoked via the DII with the `INV_NO_RESPONSE` flag set, `response_flags` will be set to `\x03`.

If the operation is defined as `oneway`, or the request is invoked via the DII with the `INV_NO_RESPONSE` flag set, `response_flags` may be set to `\x00` or `\x01`.

When this flag is set to `\x01` for a `oneway` operation, receipt of a reply does not imply that the operation has necessarily completed.

target

A discriminated union that identifies the object that is the target of the invocation. The discriminator indicates the format in which the target addressing is presented. The possible discriminator values are:

Discriminator	Description
KeyAddr	The <code>object_key</code> field from the transport-specific GIOP profile (for example, from the encapsulated IIOP profile of the IOR for the target object). This value is meaningful only to the server and is not interpreted or modified by the client.
ProfileAddr	The transport-specific GIOP profile selected for the target's IOR by the client ORB. Note: In the WebLogic Enterprise 5.1 product, this discriminator value is not supported, but is provided for future support of GIOP 1.2.

Discriminator	Description
ReferenceAddr	<p>The full IOR of the target object. The <code>selected_profile_index</code> indicates the transport-specific GIOP profile that was selected by the client ORB.</p> <p>Note: In the WebLogic Enterprise 5.1 product, this discriminator value is not supported, but is provided for future support of GIOP 1.2.</p>

`interface_id`

A NULL-terminated string that specifies the repository identifier assigned to the interface of the object.

`operation`

A NULL-terminated string that specifies the name of the operation being requested on the target object indicated by the target member and that supports the interface specified by the value of the `interface_id` member.

Description

The `RequestContext` data object contains the information that represents the context in which a request is to be processed. The context information contained in the `RequestContext` provides information necessary to coordinate between the processing of a given request and its corresponding reply.

The context information in the `RequestContext` structure can not be modified by the interceptor implementation. The ORB maintains ownership of the `RequestContext` and is responsible for freeing any resources associated with the `RequestContext` when it has completed using it.

ReplyContext Structure

Synopsis Contains the information that represents the context in which a reply is to be processed.

C++ Binding

```
struct ReplyContext
{
    Interceptors::Version struct_version;
    CORBA::ULong request_id;
    ReplyStatus reply_status;
};
```

Java Binding

```
public final class ReplyContext {
    public Interceptors.Version struct_version;
    public int request_id;
    public org.omg.CORBA.GIOP.ReplyStatusType_1_2 reply_status;
    public ReplyContext();
    public ReplyContext(
        com.beasys.Interceptors.Version __struct_version,
        int __request_id,
        org.omg.CORBA.GIOP.ReplyStatusType_1_2 __reply_status);
}
```

Members `struct_version`
An indication of the version of the `ReplyContext` that provides an indication of the format and members. The version information is separated into the following two pieces:

Version Member	Description
<code>major_version</code>	Indicates the major version value. The value of this member is incremented anytime a change is made to the contents or layout of a <code>ReplyContext</code> that is not backward compatible with previous versions.
<code>minor_version</code>	Indicates the minor version value. The value of this member is incremented anytime a change is made to the contents or layout of a <code>ReplyContext</code> that is backward compatible with previous versions.

`request_id`
An unsigned long value that specifies the identifier assigned to a request by the initiating ORB.

`reply_status`

Indicates the completion status of the associated request, and also determines part of the reply body contents.

Status Value	Description
NO_EXCEPTION	Indicates that the requested operation completed successfully and that the value of the <code>arg_stream</code> parameter contains the return values of the operation.
USER_EXCEPTION	Indicates that the requested operation failed because of an exception reported by the target object.
SYSTEM_EXCEPTION	Indicates that the request operation failed because of an exception reported either by the target object or by the infrastructure.
LOCATION_FORWARD	Indicates that the body contains an object reference (IOR). The client ORB is responsible for resending the original request to that (different) object. This resending is transparent to the client program making the request, but the resending is not transparent to the interceptor.
LOCATION_FORWARD_PERM	Indicates that the body contains an object reference. The usage is similar to <code>LOCATION_FORWARD</code> , but when used by a server, this value also provides an indication to the client that the client may replace the old IOR with the new IOR. Both the old IOR and the new IOR are valid, but the new IOR is preferred for future use. This resending is transparent to the client program making the request, but the resending is not transparent to the interceptor.
NEEDS_ADDRESSING_MODE	Indicates that the body contains a <code>GIOP::AddressingDisposition</code> . The client ORB is responsible for resending the original request using the requested addressing mode. This resending is transparent to the client program making the request, but the resending is not transparent to the interceptor.

Description The `ReplyContext` data object contains the information that represents the context in which a reply is to be processed. The context information contained in the `ReplyContext` provides information necessary to coordinate between the processing of a given request and its corresponding reply.

The context information in the `ReplyContext` can not be modified by the interceptor implementation. The ORB maintains ownership of the `ReplyContext` and is responsible for freeing any resources associated with the `ReplyContext` when it has completed using it.

RequestInterceptor::exception_occurred

Synopsis	Is called by the ORB to allow the interceptor to clean up any state that the interceptor might have been managing that is specific to a request
C++ Binding	<pre>virtual void exception_occurred(const ReplyContext & reply_context, CORBA::Exception_ptr excep_val) = 0;</pre>
Java Binding	<pre>void exception_occurred(ReplyContext reply_context, CORBA.SystemException excep_val);</pre>
Parameters	<p><code>reply_context</code> A reference to a <code>ReplyContext</code> that contains information about the context in which the reply is being performed.</p> <p><code>excep_val</code> A pointer to the exception reported by the ORB or by another interceptor.</p>
Exceptions	None.
Description	<p>The <code>exception_occurred</code> operation is called on a request-level interceptor implementation in one of three cases:</p> <ol style="list-style-type: none"> 1. Another interceptor sets an exception (rather than an exception being generated by the ORB or the method). 2. The ORB detects an operating system or communication-related problem. 3. A client deletes a <code>Request</code> object that was used to initiate a deferred synchronous DII. The <code>exception_occurred</code> method is called instead of the <code>client_response</code> or <code>target_response</code> method of that interceptor. The ORB calls the <code>exception_occurred</code> method to allow the interceptor implementation to clean up any state that it might have been managing that is specific to a request.
Return Values	None.

RequestLevelInterceptor:: ClientRequestInterceptor Interface

This is the base interface of all request-level interceptors. It inherits directly from the `RequestLevelInterceptor::RequestInterceptor` interface. The interface contains the set of operations and attributes that are supported by all client-side request-level interceptors.

Listing 9-11 OMG IDL Definition

```
//File: RequestLevelInterceptor.idl

#ifndef _REQUEST_LEVEL_INTERCEPTOR_IDL
#define _REQUEST_LEVEL_INTERCEPTOR_IDL

#include <orb.idl>
#include <Giop.idl>
#include <Interceptors.idl>

#pragma prefix "beasys.com"

module RequestLevelInterceptor
{
    local ClientRequestInterceptor : RequestInterceptor
    {
        InvokeReturnStatus
        client_invoke(
            in    RequestContext          request_context,
            in    ServiceContextList     service_context,
            in    CORBA::DataInputStream request_arg_stream,
            in    CORBA::DataOutputStream reply_arg_stream,
            out   ExceptionValue         excep_val
        );

        ResponseReturnStatus
        client_response(
            in    ReplyContext           reply_context,
            in    ServiceContextList     service_context,
            in    CORBA::DataInputStream arg_stream,
            out   ExceptionValue         excep_val
        );
    }
}
```

```
    };  
};  
#endif /* _REQUEST_LEVEL_INTERCEPTOR_IDL */
```

C++ Language Mapping

In C++, the implementation of the operations `_duplicate`, `_narrow`, and `_nil` are inherited indirectly from the implementation of the `CORBA::LocalBase` interface provided by the WebLogic Enterprise ORB.

Listing 9-12 C++ Declaration

```
#ifndef _RequestLevelInterceptor_h  
#define _RequestLevelInterceptor_h  
  
#include <CORBA.h>  
#include <IOP.h>  
#include <GIOP.h>  
#include <Interceptors.h>  
  
class OBBEXPDLL RequestLevelInterceptor  
{  
public:  
    class ClientRequestInterceptor;  
    typedef ClientRequestInterceptor *  
        ClientRequestInterceptor_ptr;  
  
    class OBBEXPDLL ClientRequestInterceptor :  
        public virtual RequestInterceptor  
    {  
    public:  
        static ClientRequestInterceptor_ptr  
            _duplicate(ClientRequestInterceptor_ptr obj);  
        static ClientRequestInterceptor_ptr  
            _narrow(ClientRequestInterceptor_ptr obj);  
        inline static ClientRequestInterceptor_ptr  
            _nil() { return 0; }  
  
        virtual Interceptors::InvokeReturnStatus  
            client_invoke(  
                const RequestContext & request_context,  
                ServiceContextList_ptr service_context,  
                CORBA::DataInputStream_ptr request_arg_stream,
```

```
        CORBA::DataOutputStream_ptr reply_arg_stream,
        CORBA::Exception_ptr & excep_val ) = 0;

    virtual Interceptors::ResponseReturnStatus
        client_response(
            const ReplyContext & reply_context,
            ServiceContextList_ptr service_context,
            CORBA::DataInputStream_ptr arg_stream,
            CORBA::Exception_ptr & excep_val ) = 0;

protected:
    ClientRequestInterceptor(CORBA::LocalBase_ptr obj = 0) { }
    virtual ~ClientRequestInterceptor(){ }

private:
    ClientRequestInterceptor( const ClientRequestInterceptor&)
        { }
    void operator=(const ClientRequestInterceptor&) { }
}; // class ClientRequestInterceptor
};
#endif /* _RequestLevelInterceptor_h */
```

Java Language Mapping

Listing 9-13 Java Declaration

```
package com.beasys.RequestLevelInterceptor;
public interface ClientRequestInterceptor
    extends com.beasys.RequestLevelInterceptor.RequestInterceptor {
    com.beasys.Interceptors.InvokeReturnStatus client_invoke(
        com.beasys.RequestLevel.Interceptor.RequestContext
                                                request_context,
        com.beasys.RequestLevel.Interceptor.ServiceContextList
                                                service_context,
        org.omg.CORBA.DataInputStream request_arg_stream,
        org.omg.CORBA.DataOutputStream reply_arg_stream,
        org.omg.CORBA.SystemExceptionHolder excep_val);
    com.beasys.Interceptors.ResponseReturnStatus client_response(
        com.beasys.RequestLevel.Interceptor.ReplyContext reply_context,
        com.beasys.RequestLevel.Interceptor.ServiceContextList
                                                service_context,
        org.omg.CORBA.DataInputStream arg_stream,
        org.omg.CORBA.SystemExceptionHolder excep_val);
}
```

ClientRequestInterceptor::client_invoke

Synopsis	Is called by the client-side ORB anytime the client application sends an invocation to a target object.
C++ Binding	<pre>virtual Interceptors::InvokeReturnStatus client_invoke(const RequestContext & request_context, ServiceContextList_ptr service_context, CORBA::DataInputStream_ptr request_arg_stream, CORBA::DataOutputStream_ptr reply_arg_stream, CORBA::Exception_ptr & excep_val) = 0;</pre>
Java Binding	<pre>Interceptors.InvokeReturnStatus client_invoke(RequestContext request_context, ServiceContextList service_context, DataInputStream request_arg_stream, DataOutputStream reply_arg_stream, SystemExceptionHolder excep_val);</pre>
Parameters	<p>request_context A reference to a RequestContext that contains information about the context in which the request is being performed.</p> <p>service_context A pointer to a ServiceContextList containing service context information to be sent as part of the request to the target object.</p> <p>Note: In WebLogic Enterprise 5.1, the value of this parameter is always a nil object.</p> <p>request_arg_stream A pointer to a DataInputStream that can be used by the interceptor implementation to retrieve the value of the parameter of the operation. The DataInputStream contains all in and inout parameters, in the order in which they are specified in the operation's IDL definition, from left to right. A nil DataInputStream indicates that no arguments exist.</p> <p>reply_arg_stream A pointer to a CORBA::DataOutputStream that can be used to populate the parameters to be returned to the initiator of the invocation as a reply. The use of this parameter is only valid if a status of REPLY_NO_EXCEPTION is returned.</p>

Note: In WebLogic Enterprise 5.1, the value of this parameter is always a nil object.

`except_val`

A reference to a location in which the interceptor can return an exception in order to report an error. The use of this parameter is only valid if a status of `REPLY_EXCEPTION` is returned. Note that the ORB is responsible for the memory management for the `except_val` parameter.

Exceptions None.

Description The `client_invoke` operation is called on an interceptor implementation that supports the `RequestLevelInterceptor::ClientRequestInterceptor` interceptor interface. The operation is called by the ORB anytime that an invocation is being sent to a target object, regardless of whether the target object is in a different address space or the same address space as the target object.

Return Values `INVOKE_NO_EXCEPTION`

Indicates that the interceptor successfully performed any processing required and that the ORB should continue processing the invocation in order to deliver it to the target object.

`REPLY_NO_EXCEPTION`

Indicates that the interceptor successfully performed any processing required to totally satisfy the request. The ORB should consider the request completed and begins processing any information in the `reply_arg_stream`, if any, as the return parameter values for the request.

Note: In WebLogic Enterprise 5.1, an interceptor can *not* return this status value.

`REPLY_EXCEPTION`

Indicates that the interceptor encountered an error that should result in the discontinued processing of the request toward the target. The parameter `except_val` is used to report the exception to the ORB. The ORB calls interceptors on the way back to the client application with the `exception_occurred` operation rather than with the `client_response` operation. Note that the ORB is responsible for the memory management for the `except_val` parameter.

ClientRequestInterceptor::client_response

Synopsis Is called on an interceptor implementation that supports the RequestLevelInterceptor::ClientRequestInterceptor interface.

C++ Binding

```
virtual Interceptors::ResponseReturnStatus
    client_response(
        const ReplyContext & reply_context,
        ServiceContextList_ptr service_context,
        CORBA::DataInputStream_ptr arg_stream,
        CORBA::Exception_ptr & excep_val ) = 0;
```

Java Binding

```
ResponseReturnStatus
    client_response(
        ReplyContext reply_context,
        ServiceContextList service_context,
        DataInputStream arg_stream,
        SystemExceptionHolder excep_val);
```

Parameters

reply_context
A reference to a ReplyContext that contains information about the context in which the reply is being performed.

service_context
A pointer to a ServiceContextList containing service context information received as a result of processing the request by the target object.
Note: In WebLogic Enterprise 5.1, the value of this parameter is always a nil object.

arg_stream
A pointer to a DataInputStream that can be used by the interceptor implementation to retrieve the value of the reply parameters of the operation.

The following table identifies what the client_response method returns in the DataInputStream object based on the status contained in the ReplyContext object:

LOCATION_FORWARD, LOCATION_FORWARD_PERM, or NEEDS_ADDRESSING_MODE	A nil DataInputStream is supplied
--	-----------------------------------

NO_EXCEPTION	The DataInputStream contains first any operation return value, then any inout and out parameters in the order in which they appear in the operation's IDL definition, from left to right. A nil DataInputStream indicates that no arguments exist.
USER_EXCEPTION or SYSTEM_EXCEPTION	The DataInputStream contains the exception that was raised by the operation.

Note: Exceptions contain a string followed by any exception members. The string contains the repository ID for the exception. The exception members are passed in the same manner as a struct. A system exception contains two unsigned long members, a minor code, and a completion status.

excep_val

A reference to a location in which the interceptor can return an exception in order to report an error. The use of this parameter is only valid if a status of `REPLY_EXCEPTION` is returned. Note that the ORB is responsible for the memory management for the `excep_val` parameter.

Exceptions None.

Description The `client_response` operation is called on an interceptor implementation that supports the `RequestLevelInterceptor::ClientRequestInterceptor` interface. The operation is called by the ORB anytime that a reply to an invocation is being received by the initiator of the request, regardless of whether the initiator is in a different address space or the same address space as the target object.

Return Values `RESPONSE_NO_EXCEPTION`
Indicates that the interceptor successfully performed any processing required and that the ORB should continue processing the reply to the request to deliver it to the initiator of the request.

`RESPONSE_EXCEPTION`
Indicates that the interceptor encountered an error. The parameter `excep_val` is used to report the exception to the ORB. Any interceptors not yet called on the way back to the client have their `exception_occurred` operation called by the ORB to notify them that processing the request has failed.

RequestLevelInterceptor:: TargetRequestInterceptor Interface

This is the base interface of all request-level interceptors. It inherits directly from the `RequestLevelInterceptor::RequestInterceptor` interface. The interface contains the set of operations and attributes that are supported by all target-side request-level interceptors.

Listing 9-14 OMG IDL Definition

```
//File: RequestLevelInterceptor.idl

#ifndef _REQUEST_LEVEL_INTERCEPTOR_IDL
#define _REQUEST_LEVEL_INTERCEPTOR_IDL

#include <orb.idl>
#include <Giop.idl>
#include <Interceptors.idl>

#pragma prefix "beasys.com"

module RequestLevelInterceptor
{
    local TargetRequestInterceptor : RequestInterceptor
    {
        InvokeReturnStatus
        target_invoke(
            in      RequestContext          request_context,
            in      ServiceContextList     service_context,
            in      CORBA::DataInputStream request_arg_stream,
            in      CORBA::DataOutputStream reply_arg_stream,
            out     ExceptionValue          excep_val
        );

        ResponseReturnStatus
        target_response(
            in      ReplyContext           reply_context,
            in      ServiceContextList     service_context,
            in      CORBA::DataInputStream arg_stream,
            out     ExceptionValue          excep_val
        );
    };
};
```

```
    };  
};  
#endif /* _REQUEST_LEVEL_INTERCEPTOR_IDL */
```

C++ Language Mapping

In C++, the implementation of the operations `_duplicate`, `_narrow`, and `_nil` are inherited indirectly from the implementation of the `CORBA::LocalBase` interface provided by the WebLogic Enterprise ORB.

Listing 9-15 C++ Declaration

```
#ifndef _RequestLevelInterceptor_h  
#define _RequestLevelInterceptor_h  
  
#include <CORBA.h>  
#include <IOP.h>  
#include <GIOP.h>  
#include <Interceptors.h>  
  
class OBBEXPDLL RequestLevelInterceptor  
{  
public:  
    class TargetRequestInterceptor;  
    typedef TargetRequestInterceptor *  
        TargetRequestInterceptor_ptr;  
  
    class OBBEXPDLL TargetRequestInterceptor :  
        public virtual RequestInterceptor  
    {  
    public:  
        static TargetRequestInterceptor_ptr  
            _duplicate(TargetRequestInterceptor_ptr obj);  
        static TargetRequestInterceptor_ptr  
            _narrow(TargetRequestInterceptor_ptr obj);  
        inline static TargetRequestInterceptor_ptr  
            _nil() { return 0; }  
  
        virtual Interceptors::InvokeReturnStatus target_invoke(  
            const RequestContext & request_context,  
            ServiceContextList_ptr service_context,  
            CORBA::DataInputStream_ptr request_arg_stream,
```

```

        CORBA::DataOutputStream_ptr reply_arg_stream,
        CORBA::Exception_ptr & excep_val ) = 0;

    virtual Interceptors::ResponseReturnStatus
        target_response(
            const ReplyContext & reply_context,
            ServiceContextList_ptr service_context,
            CORBA::DataInputStream_ptr arg_stream,
            CORBA::Exception_ptr & excep_val ) = 0;

protected:
    TargetRequestInterceptor(CORBA::LocalBase_ptr obj = 0) { }
    virtual ~TargetRequestInterceptor(){ }

private:
    TargetRequestInterceptor( const TargetRequestInterceptor& )
        { }
    void operator=(const TargetRequestInterceptor&) { }
}; // class TargetRequestInterceptor
};
#endif /* _RequestLevelInterceptor_h */

```

Java Language Mapping

Listing 9-16 Java Declaration

```

package com.beasys.RequestLevelInterceptor;
public interface TargetRequestInterceptor
    extends com.beasys.RequestLevelInterceptor.RequestInterceptor {
    com.beasys.Interceptors.InvokeReturnStatus target_invoke(
        com.beasys.RequestLevel.Interceptor.RequestContext
                                request_context,
        com.beasys.RequestLevel.Interceptor.ServiceContextList
                                service_context,
        org.omg.CORBA.DataInputStream request_arg_stream,
        org.omg.CORBA.DataOutputStream reply_arg_stream,
        org.omg.CORBA.SystemExceptionHolder excep_val);
    com.beasys.Interceptors.ResponseReturnStatus target_response(
        com.beasys.RequestLevel.Interceptor.ReplyContext reply_context,
        com.beasys.RequestLevel.Interceptor.ServiceContextList
                                service_context,
        org.omg.CORBA.DataInputStream arg_stream,
        org.omg.CORBA.SystemExceptionHolder excep_val);
}

```

TargetRequestInterceptor::target_invoke

Synopsis Is called by the target-side ORB anytime an invocation is being received by a target object.

C++ Binding

```
virtual Interceptors::InvokeReturnStatus
    target_invoke(
        const RequestContext & request_context,
        ServiceContextList_ptr service_context,
        CORBA::DataInputStream_ptr request_arg_stream,
        CORBA::DataOutputStream_ptr reply_arg_stream,
        CORBA::Exception_ptr & excep_val ) = 0;
```

Java Binding

```
Interceptors.InvokeReturnStatus
    target_invoke(
        RequestContext request_context,
        ServiceContextList service_context,
        DataInputStream request_arg_stream,
        DataOutputStream reply_arg_stream,
        SystemExceptionHolder excep_val);
```

Parameters request_context

A reference to a `RequestContext` that contains information about the context in which the request is being performed.

service_context

A pointer to a `ServiceContextList` containing service context information received as part of the request to the target object.

In WebLogic Enterprise 5.1, the value of this parameter is always a nil object.

request_arg_stream

A pointer to a `DataInputStream` that can be used by the interceptor implementation to retrieve the value of the parameter of the operation.

The `DataInputStream` contains all in and inout parameters, in the order in which they are specified in the operation's IDL definition, from left to right.

A nil `DataInputStream` indicates that no arguments exist.

reply_arg_stream

A pointer to a `DataOutputStream` that can be used to populate the parameters to be returned to the initiator of the invocation as a reply. The use of this parameter is only valid if a status of `REPLY_NO_EXCEPTION` is returned.

In WebLogic Enterprise 5.1, the value of this parameter is always a nil object.

	<p><code>excep_val</code></p> <p>A reference to a location in which the interceptor can return an exception in order to report an error. The use of this parameter is only valid if a status of <code>REPLY_EXCEPTION</code> is returned. Note that the ORB is responsible for the memory management for the <code>excep_val</code> parameter.</p>
Exceptions	None.
Description	The <code>target_invoke</code> operation is called on an interceptor implementation that supports the <code>RequestLevelInterceptor::TargetRequestInterceptor</code> interface. The operation is called by the ORB anytime that an invocation is being received by a target object, regardless of whether the target object is in a different address space or the same address space as the target object.
Return Values	<p><code>INVOKE_NO_EXCEPTION</code></p> <p>Indicates that the interceptor successfully performed any processing required and that the ORB should continue processing the invocation in order to deliver it to the target object.</p> <p><code>REPLY_NO_EXCEPTION</code></p> <p>Indicates that the interceptor successfully performed any processing required to totally satisfy the request. The ORB should consider the request completed and begins processing any information in the <code>reply_arg_stream</code>, if any, as the return parameter values for the request.</p> <p>Note: In WebLogic Enterprise 5.1, an interceptor cannot return this status value.</p> <p><code>REPLY_EXCEPTION</code></p> <p>Indicates that the interceptor encountered an error that should result in the discontinued processing of the request in order to deliver it to the target object. The parameter <code>excep_val</code> is used to report the exception to the ORB. The ORB calls interceptors on the way back to the client with the <code>exception_occurred</code> operation, rather than with the <code>target_response</code> operation. Note that the ORB is responsible for the memory management for the <code>excep_val</code> parameter.</p>

TargetRequestInterceptor::target_response

Synopsis Is called by the target-side ORB anytime that a reply to an invocation is being sent to the initiator of the request

C++ Binding `virtual Interceptors::ResponseReturnStatus
 target_response(
 const ReplyContext & reply_context,
 ServiceContextList_ptr service_context,
 CORBA::DataInputStream_ptr arg_stream,
 CORBA::Exception_ptr & excep_val) = 0;`

Java Binding `Interceptors.ResponseReturnStatus
 target_response(
 ReplyContext reply_context,
 ServiceContextList service_context,
 DataInputStream arg_stream,
 SystemExceptionHolder excep_val);`

Parameters `reply_context`
 A reference to a ReplyContext that contains information about the context in which the reply is being performed.

`service_context`
 A pointer to a ServiceContextList containing service context information to be sent as a result of processing the request by the target object.
 Note: In WebLogic Enterprise 5.1, the value of this parameter is always a nil object.

`arg_stream`
 A pointer to a DataInputStream that can be used by the interceptor implementation to retrieve the value of the reply parameters of the operation.

 The following table identifies what the `target_response` method returns in the DataInputStream object based on the status contained in the ReplyContext object:

LOCATION_FORWARD,	A nil DataInputStream is supplied
LOCATION_FORWARD_PERM,	
or	
NEEDS_ADDRESSING_MODE	

NO_EXCEPTION	The <code>DataInputStream</code> contains first any operation return value, then any <code>inout</code> and <code>out</code> parameters in the order in which they appear in the operation's IDL definition, from left to right. A <code>nil DataInputStream</code> indicates that no arguments exist.
USER_EXCEPTION or SYSTEM_EXCEPTION	The <code>DataInputStream</code> contains the exception that was raised by the operation.

Note: Exceptions contain a string followed by any exception members. The string contains the repository ID for the exception. The exception members are passed in the same manner as a `struct`. A system exception contains two unsigned long members, a minor code, and a completion status.

`excep_val`

A reference to a location in which the interceptor can return an exception in order to report an error. The use of this parameter is valid only if a status of `REPLY_EXCEPTION` is returned. Note that the ORB is responsible for the memory management for the `excep_val` parameter.

Exceptions	None.
Description	The <code>target_response</code> operation is called on an interceptor implementation that supports the <code>RequestLevelInterceptor::TargetRequestInterceptor</code> interface. The operation is called by the target-side ORB anytime that a reply to an invocation is being sent to the initiator of the request, regardless of whether the initiator is in a different address space or the same address space as the target object.
Return Values	<p><code>RESPONSE_NO_EXCEPTION</code></p> <p>Indicates that the interceptor successfully performed any processing required and that the ORB should continue processing the reply to the request to deliver it to the initiator of the request.</p> <p><code>RESPONSE_EXCEPTION</code></p> <p>Indicates that the interceptor encountered an error. The parameter <code>excep_val</code> is used to report the exception to the ORB. Any interceptors not yet called on the way back to the client have their <code>exception_occurred</code> operation called by the ORB in order to notify them that processing the request has failed. Note that the ORB is responsible for the memory management for the <code>excep_val</code> parameter.</p>

AppRequestInterceptorInit

Synopsis	Instantiates and initializes client-side and target-side interceptors. This method is C++-only.
C++ Binding	<pre>typedef void (*AppRequestInterceptorInit)(CORBA::ORB_ptr TheORB, RequestLevelInterceptor::ClientRequestInterceptor ** ClientPtr, RequestLevelInterceptor::TargetRequestInterceptor ** TargetPtr, CORBA::Boolean * RetStatus);</pre>
Parameters	<p>TheORB</p> <p>A pointer to the ORB object with which the implementation of the interceptors are associated.</p> <p>ClientPtr</p> <p>A pointer in which to return a pointer to the instance of the RequestLevelInterceptor::ClientRequestInterceptor that was instantiated for use by the ORB.</p> <p>TargetPtr</p> <p>A pointer in which to return a pointer to the instance of the RequestLevelInterceptor::TargetRequestInterceptor that was instantiated for use by the ORB.</p> <p>RetStatus</p> <p>A pointer to a location into which the interceptor implementation indicates whether the instantiation and initialization of the interceptor was successful. A value of CORBA::TRUE is used to indicate that instantiation and initialization of the interceptors was successful. A value of CORBA::FALSE is used to indicate that the instantiation and initialization of the interceptors was unsuccessful for some reason.</p>
Exceptions	None.
Description	The AppRequestInterceptorInit function is a user-provided function that is used by the ORB to instantiate and initialize client-side and target-side interceptors.
Return Values	None.

CORBA::DataInputStream Interface

The abstract `valuetype` keywords in IDL applied to `DataInputStream` indicates that it is not the same as an interface.

Listing 9-17 OMG IDL Definition

```
module CORBA {
//... all the rest

// Definitions used by DataInputStream
typedef sequence<any> AnySeq;
typedef sequence<boolean> BooleanSeq;
typedef sequence<char> CharSeq;
typedef sequence<octet> OctetSeq;
typedef sequence<short> ShortSeq;
typedef sequence<unsigned short> UShortSeq;
typedef sequence<long> LongSeq;
typedef sequence<unsigned long> ULongSeq;
typedef sequence<float> FloatSeq;
typedef sequence<double> DoubleSeq;

// DataInputStream - for reading data from the stream
abstract valuetype DataInputStream
{
    any read_any(); // WLE 5.1 - raises NO_IMPLEMENT
    boolean read_boolean();
    char read_char();
    octet read_octet();
    short read_short();
    unsigned short read_ushort();
    long read_long();
    unsigned long read_ulong();
    float read_float();
    double read_double();
    string read_string();
    Object read_Object();
    TypeCode read_TypeCode();
    void read_any_array( inout AnySeq seq,
                        in unsigned long offset,
                        in unsigned long length);
                        // WLE 5.1 - raises NO_IMPLEMENT
    void read_boolean_array(inout BooleanSeq seq,
```

```
        in unsigned long offset,
        in unsigned long length);
void read_char_array(inout CharSeq seq,
        in unsigned long offset,
        in unsigned long length);
void read_octet_array(inout OctetSeq seq,
        in unsigned long offset,
        in unsigned long length);
void read_short_array(inout ShortSeq seq,
        in unsigned long offset,
        in unsigned long length);
void read_ushort_array(inout UShortSeq seq,
        in unsigned long offset,
        in unsigned long length);
void read_long_array(inout LongSeq seq,
        in unsigned long offset,
        in unsigned long length);
void read_ulong_array(inout ULongSeq seq,
        in unsigned long offset,
        in unsigned long length);
void read_float_array(inout FloatSeq seq,
        in unsigned long offset,
        in unsigned long length);
void read_double_array(inout DoubleSeq seq,
        in unsigned long offset,
        in unsigned long length);
};
};
```

C++ Language Mapping

In C++, the implementation of CORBA::DataInputStream inherits from CORBA::ValueBase rather than from CORBA::Object. You cannot use, for example, `_duplicate`, `_narrow`, and `_nil` operations since they apply only to CORBA::Object. At this time, there is nothing of interest for users in the CORBA::ValueBase interface.

Listing 9-18 C++ Declaration

```
class CORBA
{
public:

    class      AnySeq { /* Normal sequence definition */};
    typedef    AnySeq *    AnySeq_ptr;

    class      BooleanSeq { /* Normal sequence definition */};
    typedef    BooleanSeq *    BooleanSeq_ptr;
    static const CORBA::TypeCode_ptr _tc_BooleanSeq;

    class      CharSeq { /* Normal sequence definition */};
    typedef    CharSeq *    CharSeq_ptr;
    static const CORBA::TypeCode_ptr _tc_CharSeq;

    class      OctetSeq { /* Normal sequence definition */};
    typedef    OctetSeq *    OctetSeq_ptr;
    static const CORBA::TypeCode_ptr _tc_OctetSeq;

    class      ShortSeq { /* Normal sequence definition */};
    typedef    ShortSeq *    ShortSeq_ptr;
    static const CORBA::TypeCode_ptr _tc_ShortSeq;

    class      UshortSeq { /* Normal sequence definition */};
    typedef    UshortSeq *    UshortSeq_ptr;
    static const CORBA::TypeCode_ptr _tc_UshortSeq;

    class      LongSeq { /* Normal sequence definition */};
    typedef    LongSeq *    LongSeq_ptr;
    static const CORBA::TypeCode_ptr _tc_LongSeq;

    class      UlongSeq { /* Normal sequence definition */};
    typedef    UlongSeq *    UlongSeq_ptr;
    static const CORBA::TypeCode_ptr _tc_UlongSeq;

    class      FloatSeq { /* Normal sequence definition */};
    typedef    FloatSeq *    FloatSeq_ptr;
    static const CORBA::TypeCode_ptr _tc_FloatSeq;

    class      DoubleSeq { /* Normal sequence definition */};
    typedef    DoubleSeq *    DoubleSeq_ptr;
    static const CORBA::TypeCode_ptr _tc_DoubleSeq;
```

```

class OBBEXPDLL DataInputStream : public virtual ValueBase
{
public:
    static DataInputStream_ptr _downcast(ValueBase_ptr obj);

    virtual Any *      read_any (); // WLE 5.0 raises NO_IMPLEMENT
    virtual Boolean    read_boolean ();
    virtual Char       read_char ();
    virtual Octet      read_octet ();
    virtual Short      read_short ();
    virtual UShort     read_ushort ();
    virtual Long       read_long ();
    virtual ULong      read_ulong ();
    virtual Float      read_float ();
    virtual Double     read_double ();
    virtual Char *     read_string ();
    virtual Object_ptr read_Object ();
    virtual TypeCode_ptr read_TypeCode ();

    virtual void read_any_array (    AnySeq & seq,
                                    ULong offset, ULong length);
                                    // WLE 5.1 - raises NO_IMPLEMENT
    virtual void read_boolean_array(BooleanSeq & seq,
                                    ULong offset, ULong length);
    virtual void read_char_array (   CharSeq & seq,
                                    ULong offset, ULong length);
    virtual void read_octet_array (  OctetSeq & seq,
                                    ULong offset, ULong length);
    virtual void read_short_array (  ShortSeq & seq,
                                    ULong offset, ULong length);
    virtual void read_ushort_array (UShortSeq & seq,
                                    ULong offset, ULong length);
    virtual void read_long_array (   LongSeq & seq,
                                    ULong offset, ULong length);
    virtual void read_ulong_array (  ULongSeq & seq,
                                    ULong offset, ULong length);
    virtual void read_float_array (  FloatSeq & seq,
                                    ULong offset, ULong length);
    virtual void read_double_array (DoubleSeq & seq,
                                    ULong offset, ULong length);

protected:
    DataInputStream(){ };
    virtual ~DataInputStream(){ }

private:
    void operator=(const DataInputStream&) { }
};

```

```
typedef      DataInputStream *      DataInputStream_ptr;
};
```

Java Language Mapping

Listing 9-19 Java Declaration

```
package org.omg.CORBA;
public interface DataInputStream
    extends org.omg.CORBA.portable.ValueBase {
    org.omg.CORBA.Any read_any();    // WLE 5.1 - raises NO_IMPLEMENT
    boolean read_boolean();
    char read_char();
    byte read_octet();
    short read_short();
    short read_ushort();
    int read_long();
    int read_ulong();
    float read_float();
    double read_double();
    String read_string();
    org.omg.CORBA.Object read_Object();
    org.omg.CORBA.TypeCode read_TypeCode();
    void read_any_array(org.omg.CORBA.AnySeqHolder seq,
                        // WLE 5.1 - raises NO_IMPLEMENT
                        int offset, int length);
    void read_boolean_array(org.omg.CORBA.BooleanSeqHolder seq,
                           int offset, int length);
    void read_char_array(org.omg.CORBA.CharSeqHolder seq,
                        int offset, int length);
    void read_octet_array(org.omg.CORBA.OctetSeqHolder seq,
                         int offset, int length);
    void read_short_array(org.omg.CORBA.ShortSeqHolder seq,
                         int offset, int length);
    void read_ushort_array(org.omg.CORBA.UShortSeqHolder seq,
                          int offset, int length);
    void read_long_array(org.omg.CORBA.LongSeqHolder seq,
                        int offset, int length);
    void read_ulong_array(org.omg.CORBA.ULongSeqHolder seq,
                        int offset, int length);
    void read_float_array(org.omg.CORBA.FloatSeqHolder seq,
                        int offset, int length);
    void read_double_array(org.omg.CORBA.DoubleSeqHolder seq,
                        int offset, int length);
}
```

DataInputStream::read_<primitive>

Synopsis Returns a value from the stream.

C++ Binding `<primitive> read_<primitive>();`

Java Binding `<primitive> read_<primitive>();`

Parameters None.

Exceptions None.

Description The operations to read a primitive element (*<primitive>*) from a `DataInputStream` all have the same format. Each operation returns a value from the stream.

Note: In C++, `String_var`, `TypeCode_var`, or `Object_var` can be used for memory management. Otherwise, strings must be released using the `string_free()` operation on the CORBA object, and `TypeCode` or `Object` pointers must be released using the `release()` operation on the CORBA object.

In C++, the primitives are the following:

```
AnySeq    (Not implemented in WLE 5.1)
BooleanSeq
CharSeq
OctetSeq
ShortSeq
UshortSeq
LongSeq
UlongSeq
FloatSeq
DoubleSeq
```

In Java, the primitives are the following:

```
org.omg.CORBA.AnySeqHolder (Not implemented in WLE 5.1)
org.omg.CORBA.BooleanSeqHolder
org.omg.CORBA.CharSeqHolder
org.omg.CORBA.OctetSeqHolder
org.omg.CORBA.ShortSeqHolder
org.omg.CORBA.UShortSeqHolder
org.omg.CORBA.LongSeqHolder
org.omg.CORBA.ULongSeqHolder
org.omg.CORBA.FloatSeqHolder
org.omg.CORBA.DoubleSeqHolder
```

Return Values None.

DataInputStream::read_array_<primitive>

Synopsis	Returns an array of primitive values from the stream into a CORBA sequence.
C++ Binding	<pre>void read_array_<primitive>(<primitive>Seq & seq, ULong offset, ULong length);</pre>
Java Binding	<pre>void read_array_<primitive>(<primitive>SeqHolder seq, int offset, int length);</pre>
Parameters	<p><primitive>Seq A sequence of the appropriate type that will receive the array elements read.</p> <p>C++ If the sequence was not long enough to contain the additional elements, the length will be set to the sum offset+length. (The length will not be adjusted down.)</p> <p>Java The SeqHolder must be large enough; it will not be extended.</p> <p>Offset The offset into the array to read the elements. That is, the array will have new elements starting at array index offset up to array index offset+length-1.</p> <p>Length The number of elements of the array to be returned into the seq parameter.</p>
Exceptions	None.
Description	<p>The operations to read an array of primitive elements (<primitive>) from a DataInputStream all have the same format. Each operation returns an array of primitive values from the stream into a CORBA sequence of that same primitive type.</p> <p>In C++, the primitives are the following:</p> <pre>AnySeq (Not implemented in WLE 5.1) BooleanSeq CharSeq OctetSeq ShortSeq UshortSeq LongSeq ULongSeq FloatSeq DoubleSeq</pre>

In Java, the primitives are the following:

```
org.omg.CORBA.AnySeqHolder (Not implemented in WLE 5.1)
org.omg.CORBA.BooleanSeqHolder
org.omg.CORBA.CharSeqHolder
org.omg.CORBA.OctetSeqHolder
org.omg.CORBA.ShortSeqHolder
org.omg.CORBA.UShortSeqHolder
org.omg.CORBA.LongSeqHolder
org.omg.CORBA.ULongSeqHolder
org.omg.CORBA.FloatSeqHolder
org.omg.CORBA.DoubleSeqHolder
```

Return Values None.

A Starter C++ Interceptor Files

This appendix contains the following code that you can use as a place to start implementing your C++ interceptors:

- Starter Implementation Code
- Starter Header File Code

If you use this code, replace the string *YourInterceptor* with the name of the interceptor you are implementing.

Starter Implementation Code

```
#if defined(WIN32)
#include <windows.h>
#endif

#include <ctype.h>

#include "YourInterceptor.h"

// Cleanup class -- suggested
class Cleanup
{
public:
    Cleanup() {}
    ~Cleanup()
```

A Starter C++ Interceptor Files

```
{
    // <<<Fill in your code here>>>

}
};
static Cleanup CleanupOnImageExit;

#define SECURITY_BUFFSIZE    100

#if defined(WIN32)
// suggestion for standard DLL processing

BOOL WINAPI DllMain( HANDLE hDLL,
                    DWORD  dwReason,
                    LPVOID lpReserved )
{
    switch( dwReason )
    {
    case DLL_PROCESS_ATTACH:
        break;
    case DLL_PROCESS_DETACH:
        break;
    case DLL_THREAD_ATTACH:
        break;
    case DLL_THREAD_DETACH:
        break;
    }

    // Return that the operation was successful
    return( TRUE );
}
#endif /* WIN32 */

/*****

FUNCTION NAME:          YourInterceptorInit

FUNCTIONAL DESCRIPTION:

    Initialization routine called by the ORB during initialization.
    This routine will create and return instances of the
    RequestLevelInterceptor classes that it supports.

    NOTE: An interceptor library can support more than one set of
    interceptors by supplying multiple initialization entry points
    (each initialization entry must be separately registered with the
    ORB) Also, it is legal for only one kind of interceptor to be
    supplied (i.e. only a client or only a target.)

*****/
```

```

*****/
#ifdef WIN32
extern "C" __declspec(dllexport) void __cdecl
#else
extern "C" void
#endif
YourInterceptorInit(
    CORBA::ORB_ptr                TheORB,
    RequestLevelInterceptor::ClientRequestInterceptor ** ClientPtr,
    RequestLevelInterceptor::TargetRequestInterceptor ** TargetPtr,
    CORBA::Boolean *              RetStatus)
{
    // <<<Fill in your code here>>>
}

/*****

FUNCTION NAME:          YourInterceptorClient constructor

FUNCTIONAL DESCRIPTION:

*****/
YourInterceptorClient::YourInterceptorClient(CORBA::ORB_ptr TheOrb)
{
    // This next line is useful, but not absolutely necessary.

    m_orb = TheOrb;

    // <<<Fill in your code here>>>
}

/*****

FUNCTION NAME:          YourInterceptorClient::shutdown

FUNCTIONAL DESCRIPTION:

    The shutdown operation is used by the ORB to notify an
    implementation of an interceptor that the interceptor
    is being shutdown. The ORB will destroy the instance
    of the interceptor once control is returned from the
    operation back to the ORB.

*****/

Interceptors::ShutdownReturnStatus YourInterceptorClient::shutdown(
    Interceptors::ShutdownReason    reason,
    CORBA::Exception_ptr &         excep_val)

```

A Starter C++ Interceptor Files

```
{
    // The following lines are a suggestion only. Replace them if you wish.

    Interceptors::ShutdownReturnStatus ret_status =
Interceptors::SHUTDOWN_NO_EXCEPTION;
    switch (reason)
    {
    case Interceptors::ORB_SHUTDOWN:
        // <<<Fill in your code here>>>
        break;
    case Interceptors::CONNECTION_ABORTED:
        // <<<Fill in your code here>>>

        break;
    case Interceptors::RESOURCES_EXCEEDED:
        // <<<Fill in your code here>>>

        break;
    }
    return ret_status;
}

/*****

FUNCTION NAME:          YourInterceptorClient::id

FUNCTIONAL DESCRIPTION:
    The id accessor operation is used by the ORB to obtain
    the vendor assigned identity of the interceptor as a string
    value. This attribute is used primarily for debugging and
    tracing of operations on the interceptors called by the ORB.

*****/
CORBA::String YourInterceptorClient::id()
{
    // <<<Fill in your code here>>>

    // The next line is a possible implementation that is useful
    return CORBA::string_dup("YourInterceptorClient");
}

/*****

FUNCTION NAME:          YourInterceptorClient::exception_occurred

FUNCTIONAL DESCRIPTION:

    The exception_occurred operation is called on a request-level
    interceptor implementation when an exception occurs.

*****/
```


It is called instead of the <xxx>_response method of that interceptor. The ORB calls this operation to allow the interceptor implementation to clean-up any state that it might have been managing that is specific to a request.

```

*****/
void YourInterceptorClient::exception_occurred (
    const RequestLevelInterceptor::ReplyContext &    reply_context,
    CORBA::Exception_ptr                             excep_val)
{
    // <<<Fill in your code here>>>
}

/*****/

FUNCTION NAME:          YourInterceptorClient::client_invoke

FUNCTIONAL DESCRIPTION:

    This operation is called by the ORB anytime that an
    invocation is being sent to a target object, regardless
    of whether the target object is in a different address
    space or the same address space as the target object.

*****/
Interceptors::InvokeReturnStatus YourInterceptorClient::client_invoke (
    const RequestLevelInterceptor::RequestContext &    request_context,
    RequestLevelInterceptor::ServiceContextList_ptr    service_context,
    CORBA::DataInputStream_ptr                        request_arg_stream,
    CORBA::DataOutputStream_ptr                       reply_arg_stream,
    CORBA::Exception_ptr &                             excep_val)
{
    // The next line is a suggestion that works in conjunction with the last line
    below

    Interceptors::InvokeReturnStatus ret_status =
    Interceptors::INVOKE_NO_EXCEPTION;

    // <<<Fill in your code here>>>

    return ret_status;
}

/*****/

FUNCTION NAME:          YourInterceptorClient::client_response

```

A Starter C++ Interceptor Files

FUNCTIONAL DESCRIPTION:

The operation is called by the ORB anytime that a reply to an invocation is being received by the initiator of the request, regardless of whether the initiator is in a different address space or the same address space as the target object.

```
*****/
Interceptors::ResponseReturnStatus YourInterceptorClient::client_response (
    const RequestLevelInterceptor::ReplyContext &      reply_context,
    RequestLevelInterceptor::ServiceContextList_ptr    service_context,
    CORBA::DataInputStream_ptr                        arg_stream,
    CORBA::Exception_ptr &                            excep_val)
{
    // The next line is a suggestion that works in conjunction with the last line
    below

    // See the examples for other suggestions of general use

    Interceptors::ResponseReturnStatus ret_status =
    Interceptors::RESPONSE_NO_EXCEPTION;

    // <<<Fill in your code here>>>

    return ret_status;
}
/*****
```

FUNCTION NAME: *YourInterceptorTarget* constructor

FUNCTIONAL DESCRIPTION:

This function constructs the target interceptor instance. This example provides data members that could be used to implement a security interceptor.

```
*****/
YourInterceptorTarget::YourInterceptorTarget(CORBA::ORB_ptr TheOrb) :
    m_orb(TheOrb),           // suggestion
    m_security_current(0),    // suggestion for security interceptors
    m_attributes_to_get(0)    // suggestion for security interceptors
{
```

```

    // <<<Fill in your code here>>>
}

/*****

FUNCTION NAME:          YourInterceptorTarget::shutdown

FUNCTIONAL DESCRIPTION:

    The shutdown operation is used by the ORB to notify an
    implementation of an interceptor that the interceptor
    is being shutdown. The ORB will destroy the instance
    of the interceptor once control is returned from the
    operation back to the ORB.

*****/
Interceptors::ShutdownReturnStatus YourInterceptorTarget::shutdown(
    Interceptors::ShutdownReason      reason,
    CORBA::Exception_ptr &           excep_val)
{
    // <<<Fill in your code here>>>

    // The following lines are a suggestion only. Replace them if you wish.

    Interceptors::ShutdownReturnStatus ret_status =
Interceptors::SHUTDOWN_NO_EXCEPTION;
    switch (reason)
    {
    case Interceptors::ORB_SHUTDOWN:
        // <<<Fill in your code here>>>
        break;
    case Interceptors::CONNECTION_ABORTED:
        // <<<Fill in your code here>>>
        break;
    case Interceptors::RESOURCES_EXCEEDED:
        // <<<Fill in your code here>>>
        break;
    }
    return ret_status;
}

/*****

FUNCTION NAME:          YourInterceptorTarget::id

```

A Starter C++ Interceptor Files

FUNCTIONAL DESCRIPTION:

The id accessor operation is used by the ORB to obtain the vendor assigned identity of the interceptor as a string value. This attribute is used primarily for debugging and tracing of operations on the interceptors called by the ORB.

```
*****/
CORBA::String YourInterceptorTarget::id()
{
    // <<<Fill in your code here>>>

    // The next line is a possible implementation that is useful

    return CORBA::string_dup("YourInterceptorTarget");
}
```

```
/*****
```

FUNCTION NAME: *YourInterceptorTarget::exception_occurred*

FUNCTIONAL DESCRIPTION:

The exception_occurred operation is called on a request-level interceptor implementation when an exception occurs. It is called instead of the <xxx>_response method of that interceptor. The ORB calls this operation to allow the interceptor implementation to clean-up any state that it might have been managing that is specific to a request.

```
*****/
void YourInterceptorTarget::exception_occurred (
    const RequestLevelInterceptor::ReplyContext &    reply_context,
    CORBA::Exception_ptr                          excep_val)
{
    // <<<Fill in your code here>>>
}
```

```
/*****
```

FUNCTION NAME: *YourInterceptorTarget::target_invoke*

FUNCTIONAL DESCRIPTION:

The operation is called by the ORB anytime that an invocation is being received by a target object, regardless of whether the target object is in a different address space or the same address space

as the target object.

```

*****/
Interceptors::InvokeReturnStatus YourInterceptorTarget::target_invoke (
    const RequestLevelInterceptor::RequestContext &      request_context,
    RequestLevelInterceptor::ServiceContextList_ptr      service_context,
    CORBA::DataInputStream_ptr                          request_arg_stream,
    CORBA::DataOutputStream_ptr                        reply_arg_stream,
    CORBA::Exception_ptr &                             excep_val)
{
    // The next line is a suggestion that works in conjunction with the last line
    below

    Interceptors::InvokeReturnStatus ret_status =
    Interceptors::INVOKE_NO_EXCEPTION;

    // <<<Fill in your code here>>>

    return ret_status;
}

/*****

FUNCTION NAME:          YourInterceptorTarget::target_response

FUNCTIONAL DESCRIPTION:

    The operation is called by the ORB anytime that a reply
    to an invocation is being sent to the initiator of the
    request, regardless of whether the initiator is in a
    different address space or the same address space as
    the target object.

*****/
Interceptors::ResponseReturnStatus YourInterceptorTarget::target_response (
    const RequestLevelInterceptor::ReplyContext &        reply_context,
    RequestLevelInterceptor::ServiceContextList_ptr      service_context,
    CORBA::DataInputStream_ptr                          arg_stream,
    CORBA::Exception_ptr &                             excep_val)
{
    // The next line is a suggestion that works in conjunction with the last line
    below

    Interceptors::ResponseReturnStatus ret_status =

```

A Starter C++ Interceptor Files

```
Interceptors::RESPONSE_NO_EXCEPTION;

    // <<<Fill in your code here>>>

    return ret_status;
}

/*****

    FUNCTION NAME:          YourInterceptorTarget destructor

    FUNCTIONAL DESCRIPTION:

    *****/
YourInterceptorTarget::~YourInterceptorTarget()
{
    // <<<Fill in your code here>>>
}
```

Starter Header File Code

```
#include <CORBA.h>
#include <RequestLevelInterceptor.h>
#include <security_c.h> //used with security

class YourInterceptorClient : public virtual
RequestLevelInterceptor::ClientRequestInterceptor
{
private:
    YourInterceptorClient() {}
    CORBA::ORB_ptr m_orb;
public:
    YourInterceptorClient(CORBA::ORB_ptr TheOrb);
    ~YourInterceptorClient() {}
    Interceptors::ShutdownReturnStatus shutdown(
        Interceptors::ShutdownReason reason,
        CORBA::Exception_ptr & excep_val);
    CORBA::String id();
}
```

```

void exception_occurred (
    const RequestLevelInterceptor::ReplyContext & reply_context,
    CORBA::Exception_ptr excep_val);
Interceptors::InvokeReturnStatus client_invoke (
    const RequestLevelInterceptor::RequestContext & request_context,
    RequestLevelInterceptor::ServiceContextList_ptr service_context,
    CORBA::DataInputStream_ptr request_arg_stream,
    CORBA::DataOutputStream_ptr reply_arg_stream,
    CORBA::Exception_ptr & excep_val);
Interceptors::ResponseReturnStatus client_response (
    const RequestLevelInterceptor::ReplyContext & reply_context,
    RequestLevelInterceptor::ServiceContextList_ptr service_context,
    CORBA::DataInputStream_ptr arg_stream,
    CORBA::Exception_ptr & excep_val);

};

class YourInterceptorTarget : public virtual
RequestLevelInterceptor::TargetRequestInterceptor
{
private:
    YourInterceptorTarget() {}
    CORBA::ORB_ptr m_orb;
    SecurityLevel::Current_ptr m_security_current; //used with security
    Security::AttributeTypeList * m_attributes_to_get; //used with security
public:
    YourInterceptorTarget(CORBA::ORB_ptr TheOrb);
    ~YourInterceptorTarget();
    Interceptors::ShutdownReturnStatus shutdown(
        Interceptors::ShutdownReason reason,
        CORBA::Exception_ptr & excep_val);
    CORBA::String id();
    void exception_occurred (
        const RequestLevelInterceptor::ReplyContext & reply_context,
        CORBA::Exception_ptr excep_val);
    Interceptors::InvokeReturnStatus target_invoke (
        const RequestLevelInterceptor::RequestContext & request_context,
        RequestLevelInterceptor::ServiceContextList_ptr service_context,
        CORBA::DataInputStream_ptr request_arg_stream,
        CORBA::DataOutputStream_ptr reply_arg_stream,
        CORBA::Exception_ptr & excep_val);
    Interceptors::ResponseReturnStatus target_response (
        const RequestLevelInterceptor::ReplyContext & reply_context,
        RequestLevelInterceptor::ServiceContextList_ptr service_context,
        CORBA::DataInputStream_ptr arg_stream,
        CORBA::Exception_ptr & excep_val);
};

```


B Starter Java Implementation File

This appendix contains a starter interceptor implementation file in Java that you can use as a place to begin implementing your Java interceptors. If you use this code example, replace the string *YourInterceptor* with the name of the interceptor you are implementing.

```
import org.omg.CORBA.*;
import com.beasys.Interceptors.*;
import com.beasys.RequestLevelInterceptor.*;
import com.beasys.Tobj.TP;
import com.beasys.CORBA.util.*;
import java.io.*;

/**
 * Sample showing ORB simple interceptor functionality
 */
public class InterceptorTemplate implements TargetRequestInterceptor
{
    private static String identity = new String("InterceptorTemplate");
    private String instanceID;
    private ORB theOrb = null;
    private static int count = 0;

    /**
     * Default Constructor
     */
    public InterceptorTemplate()
    {
        instanceID = new String(identity);
    }

    /**
     * Constructor
```

B Starter Java Implementation File

```
*/
public InterceptorTemplate(ORB orb)
{
    instanceID = new String(identity);
    theOrb = orb;
}

/**
 * The id accessor operation is used by the ORB to obtain
 * the vendor assigned identity of the interceptor as a string
 * value. This attribute is used primarily for debugging and
 * tracing of operations on the interceptors called by the ORB.
 */
public String id()
{
    return instanceID;
}

/**
 * The exception_occurred operation is called on a request-level
 * interceptor implementation when an exception occurred.
 * It is called instead of the <xxx>_response
 * method of that interceptor. The ORB calls this operation to
 * allow the interceptor implementation to clean-up any state
 * that it might have been managing that is specific to a request.
 */
public void exception_occurred(
    com.beasys.RequestLevelInterceptor.ReplyContext replyContext,
    org.omg.CORBA.SystemException exceptionValue)
{
    TP.userlog(id() + ", InterceptorTemplate.exception_occurred");
}

/**
 * The shutdown operation is used by the ORB to notify an
 * implementation of an interceptor that the interceptor
 * is being shutdown. The ORB will destroy the instance
 * of the interceptor once control is returned from the
 * operation back to the ORB.
 */
public com.beasys.Interceptors.ShutdownReturnStatus shutdown(
    com.beasys.Interceptors.ShutdownReason reason,
    org.omg.CORBA.SystemExceptionHolder excep_val)
{
    if (reason.value() == ShutdownReason._ORB_SHUTDOWN)
    {
        TP.userlog(id() + ", ORB Shutdown");
        excep_val.value = null;
    }
}
```

```

        return ShutdownReturnStatus.SHUTDOWN_NO_EXCEPTION;
    }

    /**
     * The operation is called by the ORB anytime that an
     * invocation is being received by a target object,
     * regardless of whether the target object is in a
     * different address space or the same address space
     * as the target object.
     */
    public com.beasys.Interceptors.InvokeReturnStatus target_invoke(
        com.beasys.RequestLevelInterceptor.RequestContext request_context,
        com.beasys.RequestLevelInterceptor.ServiceContextList service_context,
        org.omg.CORBA.DataInputStream request_arg_stream,
        org.omg.CORBA.DataOutputStream reply_arg_stream,
        org.omg.CORBA.SystemExceptionHolder excep_val)
    {
        excep_val.value = null;
        return InvokeReturnStatus.INVOKE_NO_EXCEPTION;
    }

    /**
     * The operation is called by the ORB anytime that a reply
     * to an invocation is being sent to the initiator of the
     * request, regardless of whether the initiator is in a
     * different address space or the same address space as
     * the target object.
     */
    public com.beasys.Interceptors.ResponseReturnStatus target_response(
        com.beasys.RequestLevelInterceptor.ReplyContext reply_context,
        com.beasys.RequestLevelInterceptor.ServiceContextList service_context,
        org.omg.CORBA.DataInputStream arg_stream,
        org.omg.CORBA.SystemExceptionHolder excep_val)
    {
        excep_val.value = null;
        return ResponseReturnStatus.RESPONSE_NO_EXCEPTION;
    }
}

```

Index

A

AppRequestInterceptorInit operation 9-35

B

Bootstrap object
 invoking in an interceptor 1-4

C

client interceptors
 return status values 1-8
client_invoke operation 9-24
client_response operation 9-26
ClientRequestInterceptor interface 9-21
client-side interceptors 1-6
CONNECTION_ABORTED 9-10
customer support contact information xi

D

DataInputStream interface 9-36
DataOutputStream interface 9-2
deploying interceptors 2-10, 3-7
documentation, where to find it x

E

exception_occurred operation 9-20

I

id operation 9-9
Interceptor interface 9-4
interceptor sample
 building and running 6-2
InterceptorData sample interceptor 8-1
interceptors
 architecture summary 1-2
 class hierarchy 9-2
 deploying 2-10, 3-7
 developing 2-1, 3-1, 4-1
 execution on client side 1-6
 execution walkthrough 1-5
 instantiating 1-5
 InterceptorData sample 8-1
 overview 1-1
 purpose of 1-4
 return status values on client 1-8
 return status values on target 1-12
 shutting down 9-10
 using multiple 1-15
InterceptorSec sample interceptor
 interceptors
 InterceptorSec sample 7-1
InterceptorSimp sample interceptor
 interceptors
 InterceptorSimp sample 6-1
interfaces 2-2, 3-2
 ClientRequestInterceptor 9-21
 DataInputStream 9-36
 Interceptor 9-4

RequestInterceptor 9-11
TargetRequestInterceptor 9-28

K

KeyAddr discriminator value 9-14

L

LOCATION_FORWARD 9-17
LOCATION_FORWARD_PERM 9-17

M

multiple interceptors 1-15

N

NEEDS_ADDRESSING_MODE 9-17
NO_EXCEPTION 9-17

O

object_to_string operation 9-1
ORB_SHUTDOWN 9-10

P

PersonQuery sample application 5-2
 building and running 5-8
 command-line interface to 5-3
 database for 5-2
 environment variables for 5-13, 5-17
 OMG IDL for 5-5
 running 5-14, 5-19
 source files for 5-9, 5-15
printing product documentation x
ProfileAddr discriminator value 9-14

R

read primitive 9-41

read_array primitive 9-42
ReferenceAddr discriminator value 9-14
related information xi
ReplyContext structure 9-17
RequestContext structure 9-14
RequestInterceptor interface 9-11
request-level interceptors
 overview 1-1
 See also interceptors 1-1
 See interceptors
RESOURCES_EXCEEDED 9-10
return status values
 on client side 1-8
 target 1-12

S

security current object
 obtaining 1-4
SecurityCurrent object
 obtaining in an interceptor 1-4
shutdown operation 9-10
skeleton header file
 creating 2-8, 3-6
support
 technical xi
SYSTEM_EXCEPTION 9-17

T

target interceptor return status values 1-12
target_invoke operation 9-31
target_response operation 9-33
TargetRequestInterceptor interface 9-28
target-side interceptors 1-10
transactions context object 1-4

U

USER_EXCEPTION 9-17