



Installation Guide

BEA WebLogic
Application Solutions

BEA WebLogic Personalization Server 1.7

BEA WebLogic Commerce Server 1.7

Document Edition 1.1

January 2000

Copyright

Copyright © 2000 BEA Systems, Inc. All Rights Reserved.

Restricted Rights Legend

This software and documentation is subject to and made available only pursuant to the terms of the BEA Systems License Agreement and may be used or copied only in accordance with the terms of that agreement. It is against the law to copy the software except as specifically allowed in the agreement. This document may not, in whole or in part, be copied photocopied, reproduced, translated, or reduced to any electronic medium or machine readable form without prior consent, in writing, from BEA Systems, Inc.

Use, duplication or disclosure by the U.S. Government is subject to restrictions set forth in the BEA Systems License Agreement and in subparagraph (c)(1) of the Commercial Computer Software-Restricted Rights Clause at FAR 52.227-19; subparagraph (c)(1)(ii) of the Rights in Technical Data and Computer Software clause at DFARS 252.227-7013, subparagraph (d) of the Commercial Computer Software--Licensing clause at NASA FAR supplement 16-52.227-86; or their equivalent.

Information in this document is subject to change without notice and does not represent a commitment on the part of BEA Systems. THE SOFTWARE AND DOCUMENTATION ARE PROVIDED "AS IS" WITHOUT WARRANTY OF ANY KIND INCLUDING WITHOUT LIMITATION, ANY WARRANTY OF MERCHANTABILITY OR FITNESS FOR A PARTICULAR PURPOSE. FURTHER, BEA Systems DOES NOT WARRANT, GUARANTEE, OR MAKE ANY REPRESENTATIONS REGARDING THE USE, OR THE RESULTS OF THE USE, OF THE SOFTWARE OR WRITTEN MATERIAL IN TERMS OF CORRECTNESS, ACCURACY, RELIABILITY, OR OTHERWISE.

Trademarks or Service Marks

BEA, ObjectBroker, TOP END, and Tuxedo are registered trademarks of BEA Systems, Inc. BEA Builder, BEA Connect, BEA Manager, BEA MessageQ, BEA Jolt, M3, eSolutions, eLink, WebLogic, WebLogic Application Components, WebLogic Application Solutions, WebLogic Portal, and WebLogic Enterprise are trademarks of BEA Systems, Inc.

All other company names may be trademarks of the respective companies with which they are associated.

BEA WebLogic Application Solutions Installation Guide

Document Edition	Date	Software Version
1.1	January 2000	WebLogic Application Solutions (WebLogic Personalization Server 1.7, WebLogic Commerce Server 1.7)

Contents

1. Preparing to Install WebLogic Application Solutions

What's New in WebLogic AC	1
System Requirements	2
Platforms	2
Memory	2
Servers	3
Database	3
Note about order of install.....	3
Directory Structures.....	5
NT Directory Structure.....	5
Solaris Directory Structure.....	6

2. Installing BEA WebLogic Application Solutions

Licensing WebLogic Application Solutions	7
How WebLogic Application Solutions Licensing Works.....	8
How to Reinstall the WebLogicACLicense.xml File by Hand.....	8
We're Here to Help!	9
Installation Instructions on Microsoft Windows NT.....	9
Installation Instructions on UNIX	19
Installing the product.....	19
Running the example portal applications (UNIX)	20

3. WebLogic Application Solutions Quick Start

About the example applications	21
Portal-in-a-Box (Acme).....	23
My BuyBeans.com	24
Using the Start Menu (NT).....	25

Running the My BuyBeans Example Demo	25
Launching My BuyBeans Administration.....	25
Launching WebLogic Portal Administration Tool.....	26
Launching the Portal-in-a-Box (Acme).....	26
Using the WebLogic AC Documentation.....	26
Running the My BuyBeans.com Demo on Oracle 8.0.5	27

1 Preparing to Install WebLogic Application Solutions

This topic includes the following sections:

- What's New in WebLogic AC
- System Requirements
- Directory Structures

What's New in WebLogic AC

WebLogic Application Solutions includes **BEA WebLogic Personalization Server 1.7** (referred to in the documentation as BEA WebLogic Portal), and **BEA WebLogic Commerce Server 1.7** (referred to in the documentation as BEA WebLogic Components).

BEA WebLogic Commerce Server includes the eBusiness Smart Components 1.6.1 from recently acquired Theory Center. The update includes a new version of the famous BuyBeans.com example e-commerce site called **My BuyBeans.com**; it is now integrated with BEA WebLogic Portal.

The My BuyBeans.com portal demo is designed to run “out of the box,” and to provide an easy way to quickly see the capabilities of BEA WebLogic Components.

After following the steps in this Installation Guide, you will have downloaded the program .zip, or loaded the package CD, and installed it, and you will know how to:

- Use your software license
- Run the server
- Run the My BuyBeans demo example
- Run the My BuyBeans Administration
- Run the WebLogic Portal Administration Tool
- Use the documentation

Note: This packaged software has some important prerequisites. To avoid having to stop the installation and resume it later, it is recommended that you review this guide carefully prior to running the `Setup.exe`.

System Requirements

Platforms

BEA WebLogic Application Solutions is available for the following platforms:

- Solaris 2.7 on SPARC
- Windows NT 4.0, Service Pack 5, on Intel

Memory

The product requires at least 128 MB of memory (RAM).

The installation requires the following free disk space:

- 50 MB (Windows)
- 40 MB (UNIX)

Servers

BEA WebLogic Application Solutions requires the following software products:

- WebLogic Server 4.5.1 with Service Pack 4. A file, `weblogic/lib/weblogic451sp4.jar`, is included with the portal installation and is referenced in the `startPortal` scripts.
- JDK 1.1.7B, JDK 1.2.2-001 (NT); JDK1.1.7 Production, JDK 1.2.1-04 (Solaris)

Note: *The JDK 1.2 is required for the My BuyBeans.com example application that ships with the product.*

- Web browser (Internet Explorer 4.0 and above, or Netscape Communicator 4.5 and above)
- Text editor (such as Notepad, emacs, VI)
- Rational Rose 98 or 98i required for use of the the Rose Add-In, Rose UML, and SmartGenerator

Database

- A DBMS and a JDBC driver for the DBMS. This release has been certified for Cloudscape 2.0.1 and Oracle 8.0.5.
- An evaluation version of Cloudscape is distributed with the product as part of the example implementations.

Note about order of install

The following is the recommended order of installation for a completely new set-up:

1 *Preparing to Install WebLogic Application Solutions*

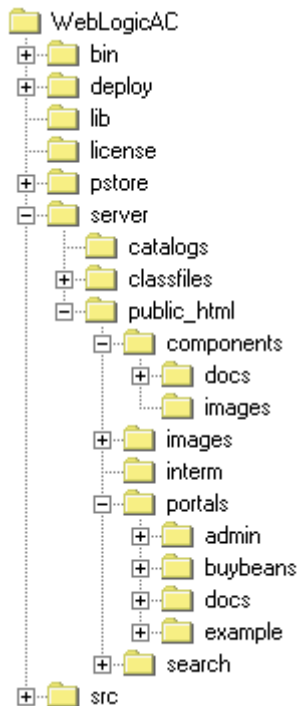
1. JDK
2. Rational Rose
3. WebLogic Server
4. WebLogic Application Components

Directory Structures

NT Directory Structure

The NT installation places the following directory structure in a **WebLogicAC** directory at the location you choose.

Figure 1-1 BEA WebLogic AC: Installed directory structure on NT.



Solaris Directory Structure

The unpacked .jar file creates the following directory structure on your drive:

Listing 1-1 BEA WebLogic AC: Installed directory structure on Solaris

```
weblogicac/  
|  
+- bin/  
|  
+- deploy/  
|  
+- lib/  
|  
+- license/  
|  
+- model/  
|  
+- roseaddin/  
|  
+- server/  
|  
+- src/  
|  
+- StartPortal.bat  
|  
+- StartPortal.sh  
|  
+- install.sh  
|  
+- license.txt  
|  
+- weblogic.properties
```

2 Installing BEA WebLogic Application Solutions

This topic includes the following sections:

- Licensing WebLogic Application Solutions
- Installation Instructions on Microsoft Windows NT
- Installation Instructions on UNIX

Licensing WebLogic Application Solutions

WebLogic Application Solutions requires a license to run.

When you registered to download WebLogic Applications Solutions an evaluation license file was e-mailed to the address you entered. If you need a new evaluation license please e-mail support@theorycenter.com with your contact information.

How WebLogic Application Solutions Licensing Works

WebLogic Application Solutions license keys are stored in `WEBLOGICAC_HOME/license` in a file called **WebLogicACLicense.xml** that looks like this:

```
<WEBLOGICAC-LICENSES>
  <LICENSE OWNER="BEA Systems"
    SERIAL="Evaluation"
    PRODUCT="BEA WebLogic Components"
    IP="any"
    UNITS="1"
    EXPIRATION="15-April-2000"
    KEY="MRNjUZEVKMVPBD8tAv5gnZJ7//Ca5qeQQrsmpQ==" />
  <LICENSE OWNER="BEA Systems"
    SERIAL="Evaluation"
    PRODUCT="BEA WebLogic Portal"
    IP="any"
    UNITS="1"
    EXPIRATION="15-April-2000"
    KEY="Mn8yzDAhQPAJjWp3ninzQbXstYXTd4zJ4D1g==" />
</WEBLOGICAC-LICENSES>
```

This XML file must be either in your working directory or in a directory included in your CLASSPATH. We recommend that you add the `WEBLOGICAC_HOME/license` directory to your CLASSPATH, but moving the **WebLogicACLicense.xml** file to a directory that is already in your classpath will also work.

How to Reinstall the WebLogicACLicense.xml File by Hand

If you receive a new **WebLogicACLicense.xml**, you should:

1. Delete any old versions of **WebLogicACLicense.xml** from your CLASSPATH.
2. Verify that the **WebLogicACLicense.xml** file is in your classpath or working directory. The easiest approach is to keep your **WebLogicACLicense.xml** in the `WEBLOGICAC_HOME/license` directory and add this directory to your classpath.

Note: If you have two license statements for the same product in the file only the first one will be used.

We're Here to Help!

If you experience any difficulties, please do not hesitate to contact us at support@theorycenter.com.

Installation Instructions on Microsoft Windows NT

Unzip the product download to a Temp directory. Double-clicking `Setup.exe` will launch a series of step-by-step installation windows to help you quickly install the WebLogic Application Solutions. The windows are self-explanatory.

You can cancel the installation at any time. (If the install program detects the presence of a previous WebLogic Application Solutions installation, you are given the option of quitting the current installation or overwriting the existing one.)

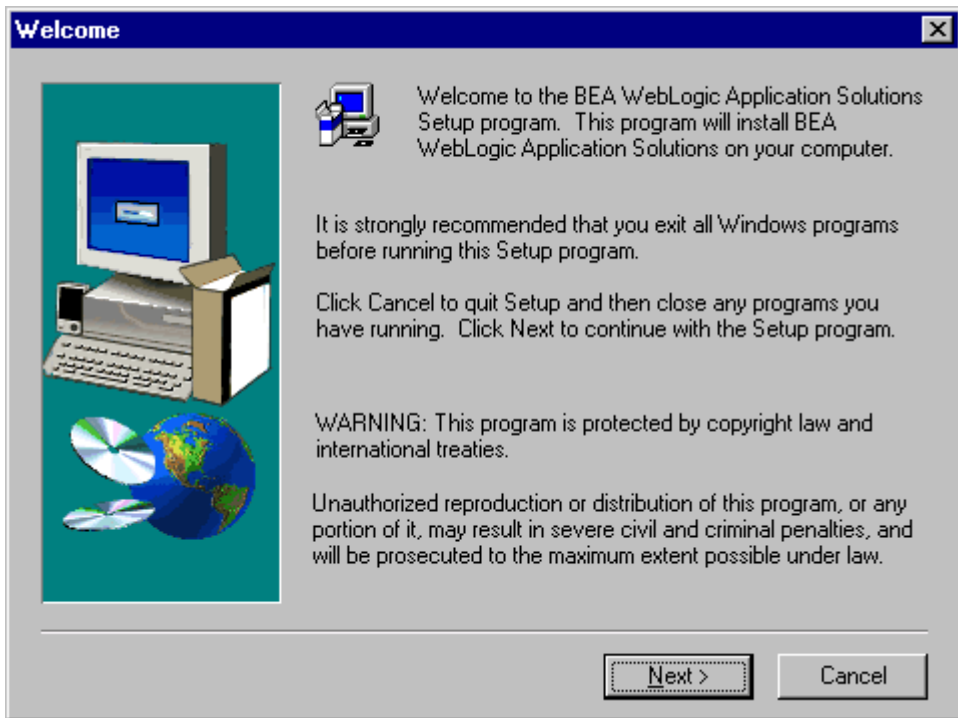
Refer to Figure 1-1 for additional information on the installed directory structure.

Notes: Please review the software requirements section of this Installation Guide before starting the installation.

Make sure you have your license key handy in the form of an `.xml` file named `WebLogicACLicense.xml`. (See “Licensing WebLogic Application Solutions” on page 2-7.)

1. When you see the Welcome window shown in Figure 2-1, click the **Next** button to proceed with the installation.

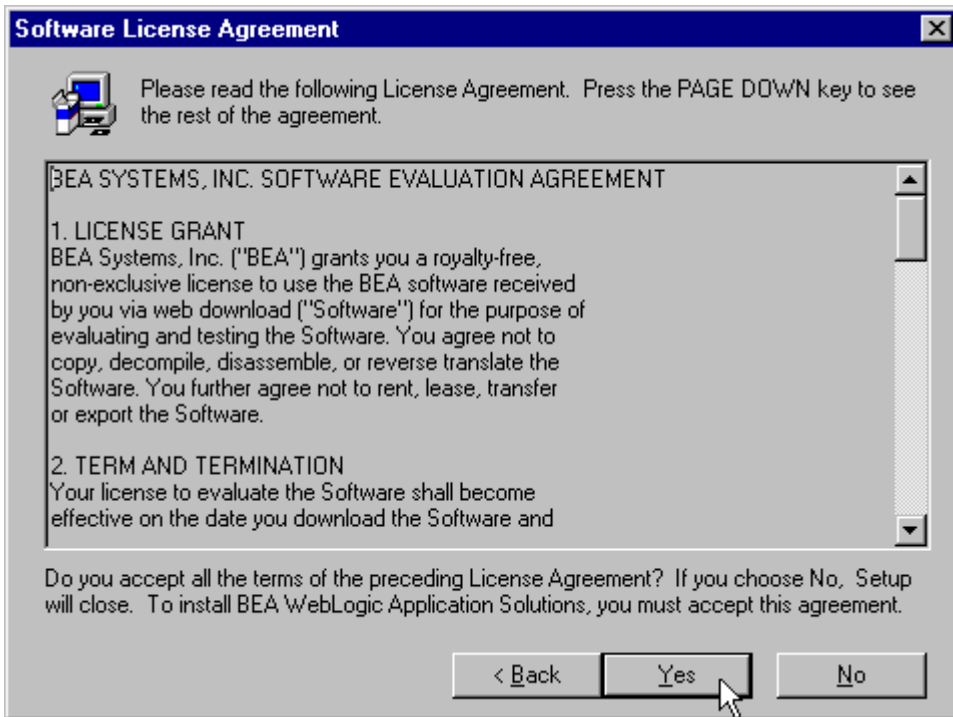
Figure 2-1 WebLogic Application Solutions Welcome Window



2. The next window that appears is the **Software License Agreement** (Figure 2-2). Use the scroll bar or the **Page Down** key to read the Software License Agreement.

To continue with the installation, you must accept the terms of the license agreement. If you accept the terms, click **Yes** and continue with the installation. If you do not accept the terms, click **No** to stop the installation.

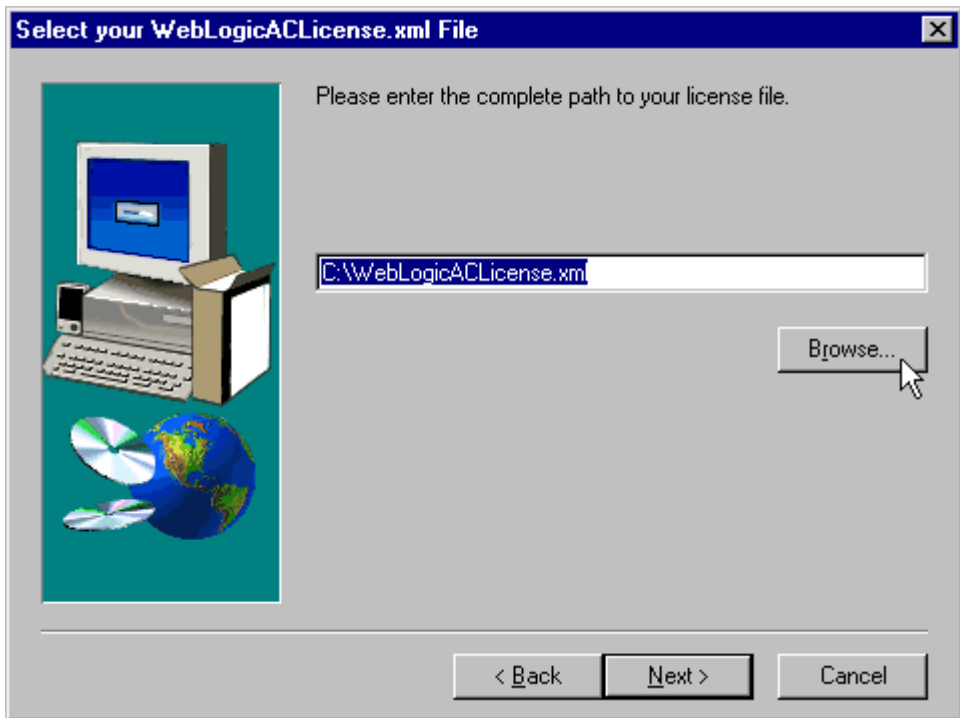
Figure 2-2 Software License Agreement



3. To install WebLogic Application Solutions, you need to point to a valid permanent or evaluation license key. This is an .xml file with the name WebLogicACLicense.xml which you should have received via email from your account manager or with your evaluation download.

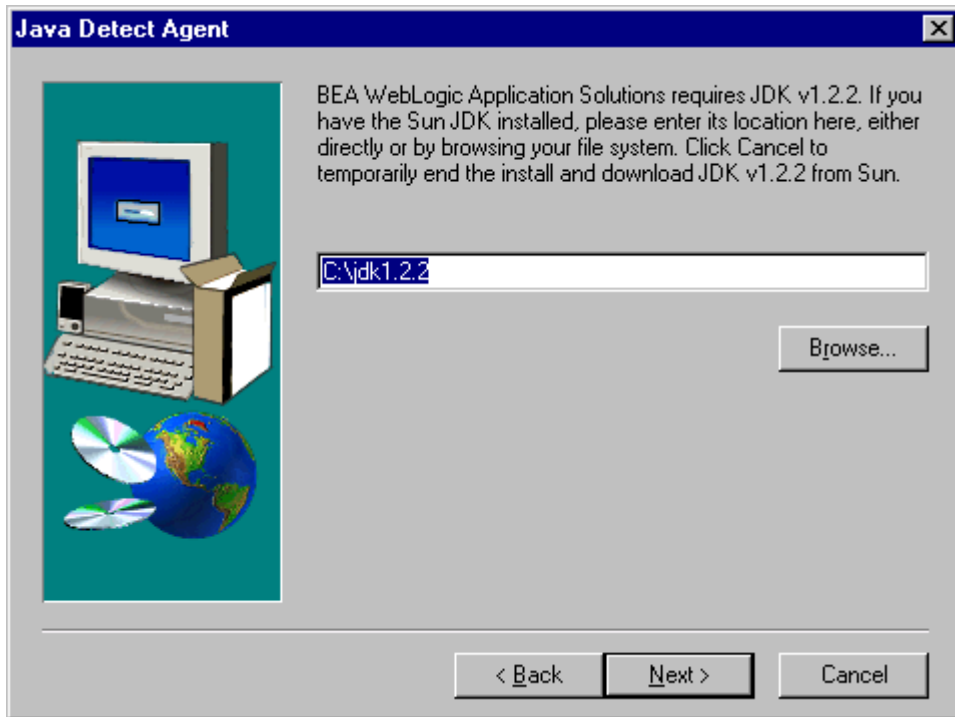
The next window that appears is **Select your WebLogicACLicense.xml File** (see Figure 2-3). Enter the complete path to its location directly or browse to it in your directories. If it is not found or invalid the installation program will tell you that it “does not exist,” and quit.

Figure 2-3 WebLogicACLicense.xml locator



4. To install WebLogic Application Solutions, you must already have the JDK1.2.2 and WebLogic Server 4.5.1 installed. In each case, you will be asked to tell us the location of the installed software. If you don't have the required software, or the installation or its registry entry is invalid, the installation program will quit. (See Figure 2-4 and Figure 2-6.)

Figure 2-4 Java Detect Agent



Note: In the case of the Java Developer Kit, your Web browser will automatically launch to the JDK1.2.2 (JAVA2 SDK) download site at <http://java.sun.com/products/jdk/1.2/> (See Figure 2-5.)

Figure 2-5 JDK Not Found

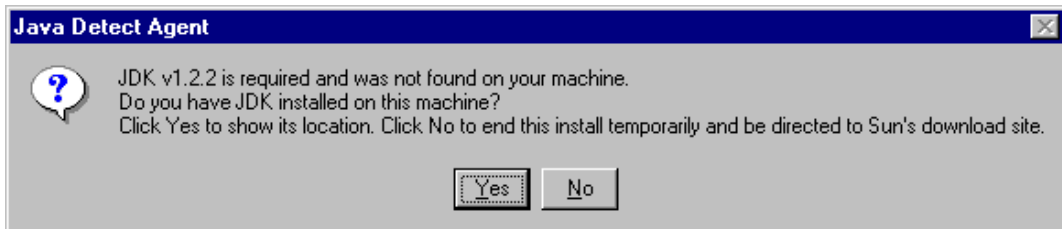
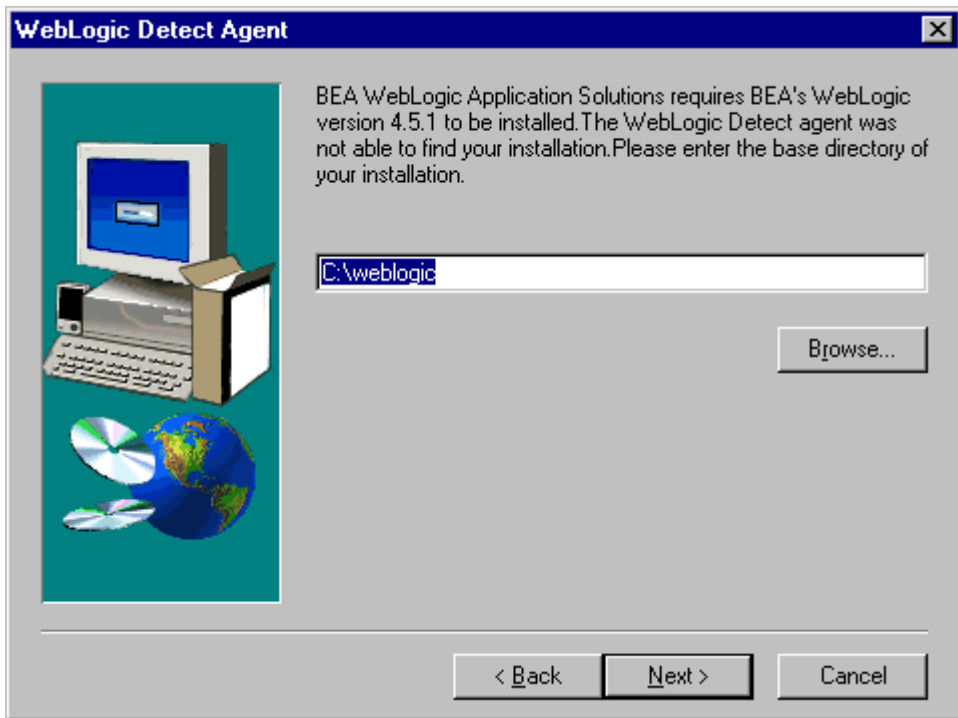


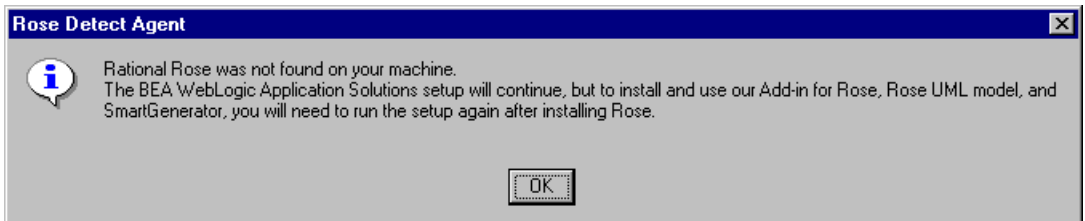
Figure 2-6 WebLogic Server Detect Agent



After installing WebLogic Server and/or JDK1.2.2, restart the Setup.exe to resume the installation program.

5. To install the complete WebLogic Application Solutions, you must already have Rational Rose 98 or 98i installed. A window will appear asking you for the location of the installed software. (See Figure 2-7.)

Figure 2-7 Rose Detect Agent



If you don't have Rose the installation will proceed, but certain parts will not install (see Table 2-1).

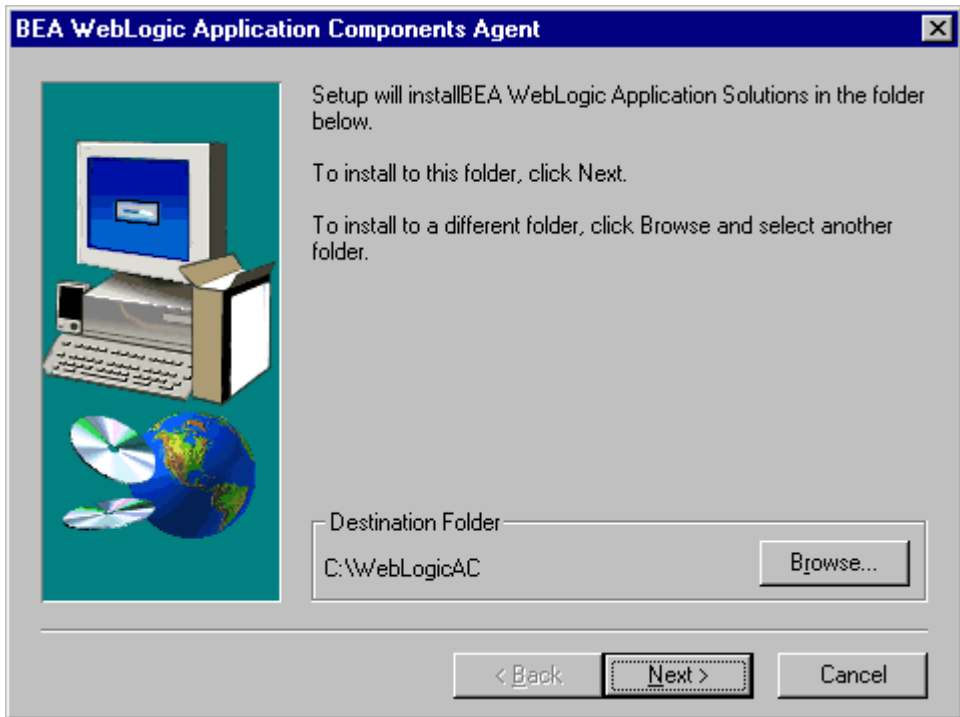
Table 2-1 Parts of WebLogic Application Solutions which do NOT install without Rational Rose present

WebLogic Components 1.7 Part
Rose Add-in
UML Model (source code)
Smart Generator

If you choose to install Rational Rose later, simply restart this product's `Setup.exe` installation program. The installation will add the additional parts to your original installation directory, as well as overwrite the previously installed product parts.

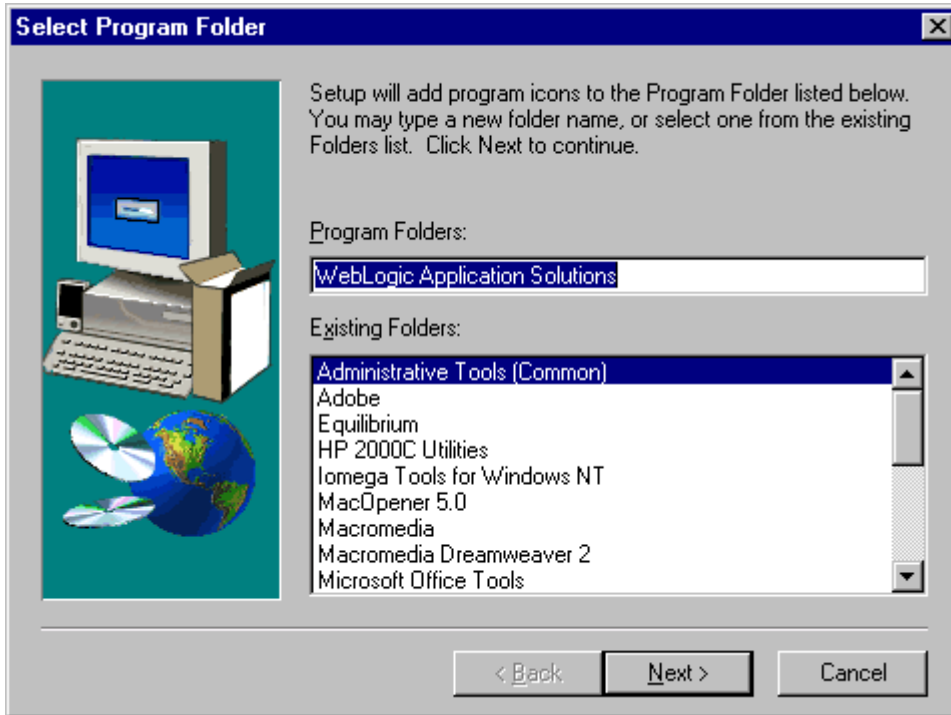
6. When all these prerequisites have been satisfied, the next window that appears is the software destination dialog (see Figure 2-9). Click **Next** to accept the default drive and directory for the installation (usually `C:\WebLogicAC`), or click **Browse...** to designate a directory location of your choosing.

Figure 2-8 Select WebLogicAC Destination



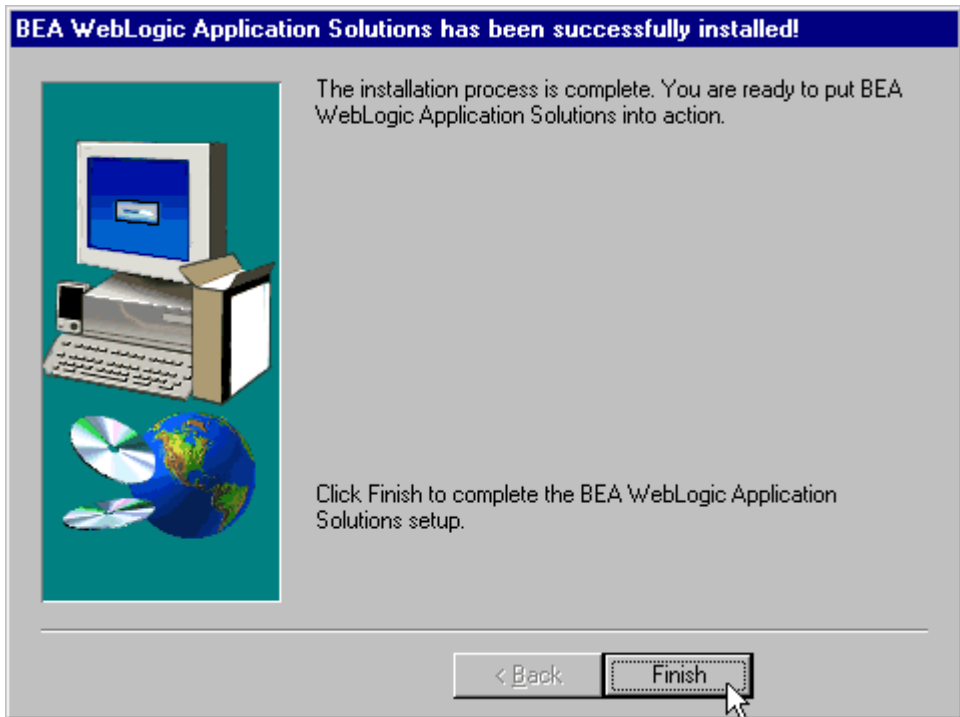
7. The next window that appears asks you to select a programs folder for the WebLogicAC components. Click **Next** to accept the defaults, select an existing alternative from the scrolling list, or type in your own choice. (See Figure 2-9.)

Figure 2-9 Select Program Folder



8. When all files are installed, the **Installation Successful** window displays (Figure 2-10). Click **Next** to launch the installed version of the HTML documentation in your default Web browser.

Figure 2-10 Installation Successful



9. To begin using WebLogic Application Solutions, you may read the documentation, or start the WebLogic Server and view the My BuyBeans or Acme example portal.

To run the **My BuyBeans.com** example:

- a. select **WebLogic Application Solutions > Examples > My BuyBeans.com** Server from the Programs Start menu
- b. Wait for the server to fully start
- c. select **WebLogic Application Solutions > Examples > My BuyBeans.com** from the Programs Start menu.

To run the **Acme** example:

- a. select **WebLogic Application Solutions > Examples > My BuyBeans.com Server** from the Programs Start menu
- b. Wait for the server to fully start
- c. select **WebLogic Application Solutions > Examples > Portal Example - Acme** from the Programs Start menu.

For more information about the example Portals, see “About the example applications” on page 3-21.

Installation Instructions on UNIX

Installing the product

After installing or downloading the product file **weblogicac.zip**, follow these steps to install BEA WebLogic Application Solutions:

1. Extract all files from the **.zip** by entering:

```
$ jar xvf weblogicac.zip
```

This creates the **weblogicac** directory on your root, and extracts all files and puts them in the proper folders.

2. Change to the **weblogicac** directory, and run the install script:

```
$ cd weblogicac
```

```
$ . install.sh
```

As the script runs, it will ask for the directory location of your JDK 1.2 and of WebLogic 4.5.1. Enter these when prompted.

Then the script will complete the installation, which may take more than a minute. Wait for the message, **WebLogic Application Components Installation complete!**

Running the example portal applications (UNIX)

1. The installation will have created the file **sethome.sh** in `weblogicac/bin/solaris2/`, and will have modified the file **weblogic.properties**

From the installation directory, run the StartPortal script:

```
$ . StartPortal.sh
```

This runs the WebLogic server and starts the sample Cloudscape database.

Note: In the original implementation, you should see 34 EJBs deployed using .ser files, and 2 EJBs deployed using .jar files.

2. Once the server is started, launch your Web browser.
3. To run My BuyBeans.com, in the location field of the browser window, enter `http://[ServerName]:7601/buybeans`. This will start the demo **My BuyBeans.com**.
4. To run Acme Portal-in-a-Box, in the location field of the browser window, enter `http://[ServerName]:7601/exampleportal`. This will start the demo **Acme**.

3 WebLogic Application Solutions Quick Start

This topic includes the following sections:

- About the example applications
 - Portal-in-a-Box (Acme)
 - My BuyBeans.com
- Using the Start Menu (NT)
 - Running the My BuyBeans Example Demo
 - Launching My BuyBeans Administration
 - Launching WebLogic Portal Administration Tool
 - Launching the Portal-in-a-Box (Acme)
 - Using the WebLogic AC Documentation
- Running the My BuyBeans.com Demo on Oracle 8.0.5

About the example applications

This release includes two example applications that use BEA WebLogic Portal: a “Portal-in-a-Box” example for a fictional “Acme Corporation,” and My BuyBeans.com, an e-commerce example in the Portal framework.

Internet portals are a key part of many eCommerce applications. They provide an entry point to the Internet as well as value-added services such as searching and application integration. Portals can be divided into two major categories:

- MegaPortals
- Enterprise Portals

Examples of *MegaPortals* include **Netcenter** and **Yahoo!** These provide windows onto information on the Internet and typify Business-to-Consumer (B2C) Web applications that can be personalized.

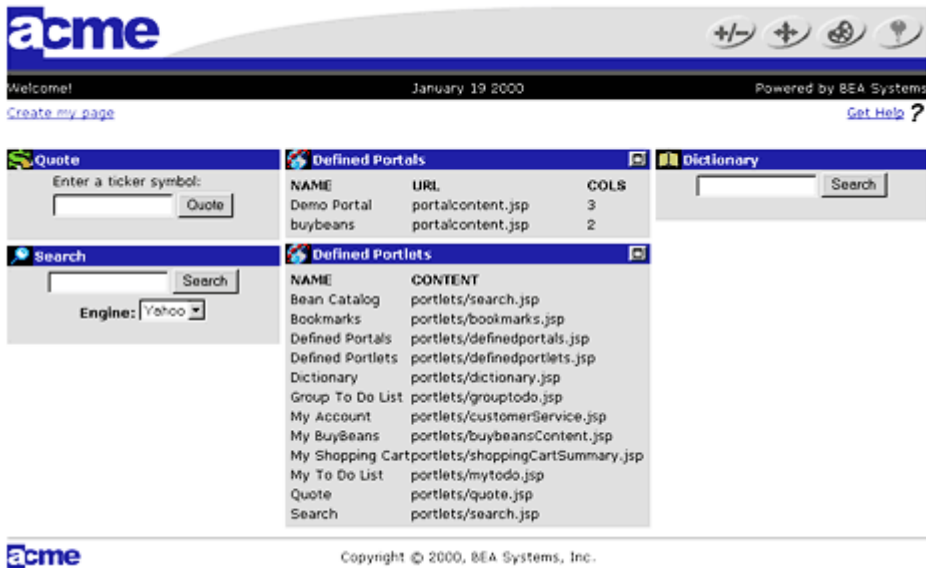
Enterprise portals use general-purpose applications in addition to applications specific to the enterprise or industry. These are Business-to-Business (B2B) web applications, and in many cases share B2C functionality.

BEA WebLogic Portal allows you to quickly assemble both Business-to-Consumer and Business-to-Business portals that require personalized application content on the Internet.

The second example application, **My BuyBeans.com**, takes the B2C portal model a step further and implements portlets as chunks of e-business functionality.

Portal-in-a-Box (Acme)

Figure 3-1 Portal-in-a-Box (Acme)



The **Portal-in-a-Box**, Acme Corporation, is designed to be a full reference implementation. It is the developer's best starting point for understanding the complete functionality provided with the product.

In **Acme**, the portlets are not necessarily aware of each other's data or state. Each is a window on a discrete interaction or data store.

Use Acme to learn how to create and modify portlets, configure personalization for users, groups, and the entire portal, and configure the portal itself. Also use it to understand the complete set of user and portal administration tools.

My BuyBeans.com

Figure 3-2 My BuyBeans.com example portal



In **My BuyBeans.com**, the portal header and footer are different, and the portlet defaults have been customized to create a different look and feel. In addition, the portlet contents operate as an integrated e-commerce application, aware of each other and updating each other.

However, unlike the reference implementation **Acme**, My BuyBeans.com does not implement every module and option the product offers.

Use My BuyBeans to learn how to implement WebLogic Components in the Portal framework.

Using the Start Menu (NT)

Notes: For all of the following activities, ensure the WebLogic server under **WebLogic Application Solutions > Examples** is running.

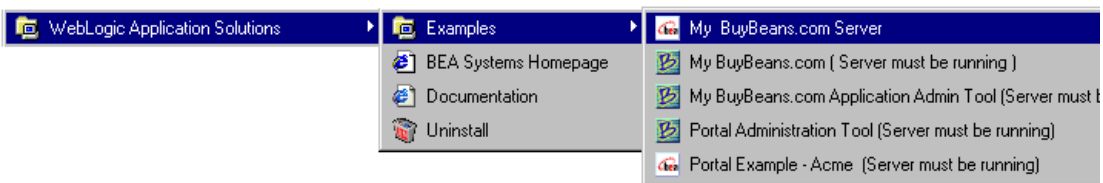
All of the following examples assume that you installed under the default Programs Menu name **WebLogic Application Solutions**.

Running the My BuyBeans Example Demo

To begin using WebLogic Application Solutions, you may read the documentation, or start the WebLogic Server and the My BuyBeans example portal. To run the example:

- a. select **WebLogic Application Solutions > Examples > My BuyBeans.com Server** from the Programs Start menu
- b. Wait for the server to fully start
- c. select **WebLogic Application Solutions > Examples > My BuyBeans.com** from the Programs Start menu.

Figure 3-3 Start Menu Program Entries



Launching My BuyBeans Administration

Select **WebLogic Application Solutions > Examples > My BuyBeans Application Admin Tool** from the Programs Start menu.

Launching WebLogic Portal Administration Tool

Select **WebLogic Application Solutions > Examples > Portal Administration Tool** from the Programs Start menu.

The default administration log-on is as follows:

User Name	system
Password	weblogic

Note: *This Portal Admin log-in is not to be confused with the administration log-in for WebLogic Server.*

Launching the Portal-in-a-Box (Acme)

Select **WebLogic Application Solutions > Examples > Portal Example (Acme)** from the Programs Start menu (NT).

In Solaris, after running `StartPortal.sh`, open
`http://[ServerName]:7601/exampleportal` in your Web browser.

Using the WebLogic AC Documentation

The HTML documentation will launch automatically into your default browser after successful installation. To launch it when you need it, select **WebLogic Application Solutions > Documentation** from the Programs Start menu.

Note: The same documentation is available on-line at e-docs.beasys.com, and customers may always access the latest Release Notes from the on-line documentation repository.

Running the My BuyBeans.com Demo on Oracle 8.0.5

This section outlines the steps necessary to run the **My BuyBeans.com** demo on an Oracle platform. The default deployment set is Cloudscape.

This section supplements the general instructions for Oracle deployments found in the documentation for WebLogic Application Components under the heading “Deployment Sets Overview” in the topic **Deploying WebLogic Components Using Bean-Managed Persistence**.

Note: In the following section, `WEBLOGICAC_HOME` is the place where you installed the WebLogic Application Solutions server. (i.e. `C:\WeblogicAC`)

1. Open up SQL Plus and log in to your Oracle account.
2. Run the following scripts (in order) at your SQL Plus prompt. (The directory is `WEBLOGICAC_HOME/deploy/weblogic/oracle805/misc.`) This will create the schema required to run My BuyBeans and its example portal:
 - a. `pl3n.ddl`
 - b. `BuyBeansOracle805.sql`
 - c. `create_portlet_definition.sql`
 - d. `create_portlet_definition_index.sql`
 - e. `acme.ddl`
3. Open `WEBLOGICAC_HOME/bin/win32/sethome.bat`. You will comment out the lines which set the environment variables for Cloudscape and uncomment the Oracle variables:
 - a. Comment out the lines which set `DEPLOYMENT_SET` and `DB_CLASSPATH` under `CLOUDSCAPE` as follows:

```
REM ----- CLOUDSCAPE -----
REM SET DEPLOYMENT_SET=%WEBLOGICAC_HOME%\deploy\weblogic\cloudscape
REM SET
DB_CLASSPATH=%WEBLOGICAC_HOME%\eval\cloudscape\lib\cloudscape.jar;%WEBLOGICAC_HOME%\eval\cloudscape\lib\tools.jar;%WEBLOGICAC_HOME%\eval\cloudscape\lib\client.jar
```

- b. Uncomment the variables under ORACLE_805 as follows:

```
REM ----- ORACLE 805 -----  
SET DEPLOYMENT_SET=%WEBLOGICAC_HOME%\deploy\weblogic\oracle805  
SET DB_CLASSPATH=%ORACLE_DRIVER_PATH%\classes111.zip
```

4. Copy the `weblogic.properties` in the `WEBLOGICAC_HOME/deploy/weblogic/oracle805/misc` directory to the `WEBLOGICAC_HOME` directory.

Note: Make sure you specify the **username/password** correctly when you create the connection pool in the properties file.

5. If you have changed the default port (7601) to something else in `weblogic.properties` within your `WEBLOGICAC_HOME` directory, you will need to open up the file `theory.properties` in the directory `WEBLOGICAC_HOME/deploy/weblogic/oracle805/misc` and change the port number in the following line:

```
java.naming.provider.url=t3://localhost:7601/
```

6. Open up a DOS prompt and go to the `WEBLOGICAC_HOME/bin/win32` directory. Type in the following at the command prompt:

```
itemloader -url http://localhost:7601 -tabdelimitedfile  
WEBLOGICAC_HOME/deploy/weblogic/oracle805/misc/BuyBeans.txt
```

This will insert the buybeans data into the Oracle database.

7. Now from within the same directory issue the command:

```
shippingmethodloader -url http://localhost:7601 -commadelimitedfile  
WEBLOGICAC_HOME/deploy/weblogic/oracle805/misc/shippingmethods.txt
```

This will insert the shippingmethod prices into the Oracle database.

8. At this point, your buybeans data is ready within the Oracle database.

Populating the Database with the Demo Defaults

9. Now open up the **Portal Administration Tool** from within your browser and create the following portlets which are associated with the buybeans application:

Portlet	Bean Catalog
Content URL	portlets/search.jsp
Minimizable	true
Icon URL	portlets/images/buybeansportleticon.gif

Portlet	My Account
Content URL	portlets/customerService.jsp
Minimizable	true
Icon URL	portlets/images/buybeansportleticon.gif
Editable	true
Edit URL	updateAccountInformation.jsp
Login Required	true

Portlet	My Shopping Cart
Content URL	portlets/shoppingCartSummary.jsp
Minimizable	true
Icon URL	portlets/images/buybeansportleticon.gif

Portlet	My BuyBeans
Content URL	portlets/buybeansContent.jsp
Minimizable	true
Icon URL	portlets/images/buybeansportleticon.gif

10. Finally, from within the **Portal Administration Tool** create a default portal called "buybeans", with the following attributes:

Definition		
	Header URL	buybeansheader.jsp
	Content URL	portalcontent.jsp
	Footer URL	buybeansfooter.jsp
	Columns	2
Associated Portlets (visible portlets)		
	Bean Catalog	My BuyBeans
	My Account	My Shopping Cart
Layout	Column 1	Column 2
	My Shopping Cart	My BuyBeans
	My Account	
	Bean Catalog	
Colors	Custom Color Scheme	
	Title Bar	#336699
	Banner	#336699
	Body (Portlet)	#CCCCCC
	Portlet Title Color	#FFFF99
	Portal Background Color	White

11. Save your changes. The next time you open **My BuyBeans** by typing in the url `http://localhost:7601/buybeans`, you should see the demo portal application up and running using Oracle.

