



THE ENTERPRISE MIDDLEWARE SOLUTION

# BEA Manager

## Installation Guide

BEA Manager 2.0  
Document Edition 2.0  
November 1998

# Copyright

Copyright © 1997, 1998 BEA Systems, Inc. All Rights Reserved.

## Restricted Rights Legend

This software and documentation is subject to and made available only pursuant to the terms of the BEA Systems License Agreement and may be used or copied only in accordance with the terms of that agreement. It is against the law to copy the software except as specifically allowed in the agreement. This document may not, in whole or in part, be copied photocopied, reproduced, translated, or reduced to any electronic medium or machine readable form without prior consent, in writing, from BEA Systems, Inc.

Use, duplication or disclosure by the U.S. Government is subject to restrictions set forth in the BEA Systems License Agreement and in subparagraph (c)(1) of the Commercial Computer Software-Restricted Rights Clause at FAR 52.227-19; subparagraph (c)(1)(ii) of the Rights in Technical Data and Computer Software clause at DFARS 252.227-7013, subparagraph (d) of the Commercial Computer Software--Licensing clause at NASA FAR supplement 16-52.227-86; or their equivalent.

Information in this document is subject to change without notice and does not represent a commitment on the part of BEA Systems. THE SOFTWARE AND DOCUMENTATION ARE PROVIDED "AS IS" WITHOUT WARRANTY OF ANY KIND INCLUDING WITHOUT LIMITATION, ANY WARRANTY OF MERCHANTABILITY OR FITNESS FOR A PARTICULAR PURPOSE. FURTHER, BEA Systems DOES NOT WARRANT, GUARANTEE, OR MAKE ANY REPRESENTATIONS REGARDING THE USE, OR THE RESULTS OF THE USE, OF THE SOFTWARE OR WRITTEN MATERIAL IN TERMS OF CORRECTNESS, ACCURACY, RELIABILITY, OR OTHERWISE.

## Trademarks or Service Marks

BEA, ObjectBroker, TOP END, and TUXEDO are registered trademarks of BEA Systems, Inc. BEA Builder, BEA Connect, BEA Manager, BEA MessageQ, Jolt and M3 are trademarks of BEA Systems, Inc.

All other company names may be trademarks of the respective companies with which they are associated.

### BEA Manager Installation Guide

Document Edition	Part Number	Date	Software Version
2.0	815-001002-002	November 1998	BEA Manager 2.0

---

# Contents

## Preface

Purpose of This Document .....	v
Who Should Read This Document .....	v
BEA Manager Documentation .....	v
How This Document Is Organized .....	vi
Contact Information.....	viii

## 1. Preinstallation Notes

Product CD File Organization .....	1-2
Documentation CD File Organization.....	1-3
Copying the Online Documentation to Your Hard Drive .....	1-5

## 2. Installation on UNIX Systems

Mounting the CD on the UNIX File System .....	2-1
Installation .....	2-2
Uninstalling BEA Manager Software.....	2-7

## 3. Installation on Windows NT Systems

Installation .....	3-2
Uninstalling BEA Manager Software.....	3-15



---

# Preface

## Purpose of This Document

This *BEA Manager Installation Guide* explains how to install BEA Manager software from the product media onto your machine.

## Who Should Read This Document

This guide is written for users installing BEA Manager software.

## BEA Manager Documentation

The BEA Manager documentation consists of the following items:

- ◆ *BEA Manager Installation Guide*
- ◆ *BEA Manager Release Notes*
- ◆ *Agent Development Kit Programmer's Guide*
- ◆ *Agent Connection for M3 and TUXEDO Systems Reference Manual*
- ◆ *Agent Integrator Reference Manual*

- 
- ◆ *Log Central Administrator's Guide*
  - ◆ Log Central online help

## How This Document Is Organized

The *BEA Manager Installation Guide* is organized as follows:

- ◆ Chapter 1, “Preinstallation Notes,” describes the CD file structure for BEA Manager products.
- ◆ Chapter 2, “Installation on UNIX Systems,” describes installation procedures for UNIX platforms.
- ◆ Chapter 3, “Installation on Windows NT Systems,” describes installation and un-installation procedures for Windows NT systems.

## Document Conventions

Throughout this *BEA Manager Installation Guide*, the following formatting conventions are used to specify data entry words, screen and menu options, and various symbols.

Convention	Item
<b>boldface text</b>	Indicates terms defined in the glossary.
Ctrl+Tab	Indicates that you must press two or more keys sequentially.
<i>italics</i>	Indicates emphasis or book titles.

Convention	Item
monospace text	<p>Indicates code samples, commands and their options, data structures and their members, data types, directories, and file names and their extensions. Monospace text also indicates text that you must enter from the keyboard.</p> <p><i>Examples:</i></p> <pre>#include &lt;iostream.h&gt; void main ( ) the pointer psz chmod u+w * \tux\data\ap .doc tux.doc BITMAP float</pre>
<b>monospace boldface text</b>	<p>Identifies significant words in code.</p> <p><i>Example:</i></p> <pre>void <b>commit</b> ( )</pre>
<i>monospace italic text</i>	<p>Identifies variables in code.</p> <p><i>Example:</i></p> <pre>String <i>expr</i></pre>
UPPERCASE TEXT	<p>Indicates device names, environment variables, and logical operators.</p> <p><i>Examples:</i></p> <pre>LPT1 SIGNON OR</pre>
{ }	<p>Indicates a set of choices in a syntax line. The braces themselves should never be typed.</p>
[ ]	<p>Indicates optional items in a syntax line. The brackets themselves should never be typed.</p> <p><i>Example:</i></p> <pre>buildobjclient [-v] [-o name ] [-f <i>file-list</i>]... [-l <i>file-list</i>]...</pre>
	<p>Separates mutually exclusive choices in a syntax line. The symbol itself should never be typed.</p>

---

Convention	Item
...	<p>Indicates one of the following in a command line:</p> <ul style="list-style-type: none"> <li>◆ That an argument can be repeated several times in a command line</li> <li>◆ That the statement omits additional optional arguments</li> <li>◆ That you can enter additional parameters, values, or other information</li> </ul> <p>The ellipsis itself should never be typed.</p> <p><i>Example:</i></p> <pre>buildobjclient [-v] [-o name ] [-f file-list]... [-l file-list]...</pre>
. . .	<p>Indicates the omission of items from a code example or from a syntax line.</p> <p>The vertical ellipsis itself should never be typed.</p>

---

## Contact Information

The following sections provide information about how to obtain support for the documentation and software.

## Documentation Support

If you have questions or comments on the documentation, you can contact the BEA Information Engineering Group by e-mail at **docsupport@beasys.com**. (For information about how to contact Customer Support, refer to the following section.)



---

## Customer Support

If you have any questions about this version of BEA Manager, or if you have problems installing and running BEA Manager, contact BEA Customer Support through BEA WebSupport at [www.beasys.com](http://www.beasys.com). You can also contact Customer Support by using the contact information provided on the Customer Support Card, which is included in the product package.

When contacting Customer Support, be prepared to provide the following information:

- ◆ Your name, e-mail address, phone number, and fax number
- ◆ Your company name and company address
- ◆ Your machine type and authorization codes
- ◆ The name and version of the product you are using
- ◆ A description of the problem and the content of pertinent error messages



# 1 Preinstallation Notes

This installation guide takes you through the step-by-step procedures to install the BEA Manager 2.0 products. This chapter describes the CD file structure for BEA Manager products, and how to use the online documentation. After you have properly installed the Manager products, refer to the product manual and guides for information about configuring and starting your newly installed products. For the 2.0 release information on any of these products, see the BEA Manager 2.0 Release Notes.

BEA Manager 2.0 is supplied on two CDs, one that contains the products and one that contains all the documentation. BEA Manager 2.0 consists of the following products:

## **Agent Connection for M3 and TUXEDO Systems 2.0**

This product provides an SNMP agent and SNMP version of the TUXEDO Management Information Base (TMIB) for management of M3 and TUXEDO systems. Refer to the *Agent Connection for M3 and TUXEDO Systems Reference Manual* for more information.

## **Agent Integrator 4.2**

This product provides an intelligent SNMP master agent for local polling and management of multiple SNMP-compliant agents, SNMP Multiplex (SMUX) subagents, and a supporting agent MIB. Refer to the *Agent Integrator Reference Manual* for more information.

## **Agent Development Kit 4.2**

This product provides a code generator and other tools for efficient development of SNMP agents and SMUX subagents. Refer to the *Agent Development Kit Programmer's Guide* for more information.

## **Log Central 4.0**

This product provides log agents and central infrastructure to collect log information into a single relational database for management of systems that generate log messages. Refer to the *Log Central Administrator's Guide* for more information.

# Product CD File Organization

Table 1-1 shows the directory structure of the BEA Manager product CD. You will use this information during the actual installation process described in succeeding chapters.

**Table 1-1 CD File Organization**

Top Level	Contains	Description
intel/winnt40 alpha/winnt40	setup.exe	This directory contains an installation program (setup.exe) for Agent Integrator, Agent Development Kit, Agent Connection for M3 and TUXEDO, and Log Central for use with the Microsoft Windows NT operating system.
install.sh		UNIX installation program.
alpha/,hp/, ibm/, seq/, sgi/, sun5x/, ncr/		These directories contain platform-specific installation files organized by operating system used by the install.sh program.
common/	LogCentralConsole.jar, LogCentralDB.jar	The jar files used by Log Central

# Documentation CD File Organization

This release of the BEA Manager software includes a separate documentation CD, which contains the entire set of available documents in HTML and PDF format.

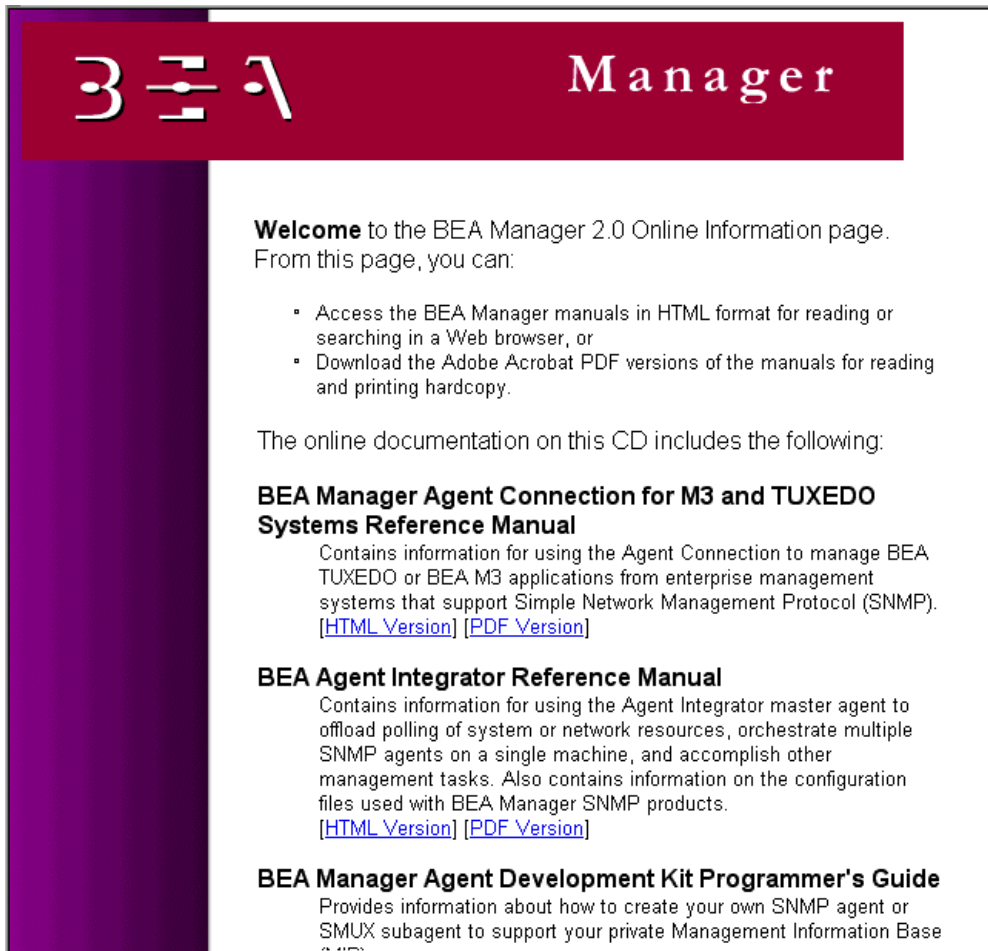
Table 1-2 shows the organization of the documentation CD.

**Table 1-2 Documentation CD File Organization**

Top Level	Contains	Description
/docs/mgr/20/	index.htm, copyrigh.htm	BEA Manager documentation home page and copyright notice
/docs/mgr/20/graphics/		Graphics for documentation home page
/docs/mgr/20/agcon/		<i>Agent Connection for M3 and TUXEDO Systems Reference Manual</i> in HTML
/docs/mgr/20/integ/		<i>Agent Integrator Reference Manual</i> in HTML
/docs/mgr/20/agkit/		<i>Agent Development Kit Programmer's Guide</i> in HTML
/docs/mgr/20/logcent/		<i>Log Central Administrator's Guide</i> in HTML
/docs/mgr/20/pdf/	agcon.pdf, integ.pdf, agkit.pdf, logcent.pdf	<i>Agent Connection for M3 and TUXEDO Systems Reference Manual, Agent Integrator Reference Manual, Agent Development Kit Programmer's Guide, Log Central Administrator's Guide</i> in PDF

To begin viewing the online documentation from the CD, use your browser to open the `index.htm` file. From this BEA Online Information page, you can access both the HTML and PDF files.

The following diagram illustrates the HTML index page that you can use to open each Manager 2.0 HTML and PDF file.



**Note:** The online documentation requires browser-supported HTML 3.0 including tables and frames capability.

You can view and print all documents directly from the documentation CD. You can also view and print all documents from your system, after copying the CD image to your system, as explained in the next section.

# Copying the Online Documentation to Your Hard Drive

Insert the CD into a mounted CD drive, and then follow the instructions for your system, UNIX or NT.

If you wish to move any of the online documentation files, you must keep the entire document tree together. You can move that entire tree to any location.

## UNIX System Instructions

Change your directory to the target directory where you want to place your files, as, for example:

```
cd /mydirectory/docs
```

Copy the entire CD contents using a recursive copy:

```
cp -r /mnt .
```

## Microsoft Windows NT System Instructions

To copy by drag-and-drop:

1. Double-click on the CD drive icon.

Windows NT Explorer displays a `docs` folder.

2. Drag the entire CD contents to your local hard disk (for example, your C: drive).

To copy using Windows NT Explorer:

1. Double-click on the CD drive icon.

Windows NT Explorer displays a `docs` folder.

2. Select and copy the contents of the CD.
3. Paste the copy onto your local drive using `Edit → Paste` or `Ctrl+V`.





# 2 Installation on UNIX Systems

Before beginning installation of any BEA Manager product:

- ◆ Make sure your system meets or exceeds the requirements listed in the *BEA Manager Release Notes*.
- ◆ Have your BEA Manager License Token Certificate handy.

## Mounting the CD on the UNIX File System

To install the BEA Manager software, you must have either a local CD drive or a drive that is accessible over a network. The procedure for mounting the CD file system on the local UNIX platform may vary depending on the UNIX system being used. For this procedure, refer to your UNIX system administrator or UNIX system documentation for instructions specific to your UNIX platform.

For example, on a Solaris 2.5.1 system, volume management is enabled by default. Thus, when you insert the CD into the drive, its file system is automatically mounted.

If you are mounting the CD file system from a remote machine, you can mount the CD as an NFS file system with the following command:

```
mount -F nfs -r machine-name:/cdrom/beamanager /mount-point
```

For example:

```
mount -F nfs -r diamond:/cdrom/beamanager /mnt/BEAManager
```

For mounting the CD on HP-UX systems, do the following:

1. If the PFS daemons are not already running, start them as follows:

```
# nohup pfs_mountd &  
# nohup pfsd &
```

2. Mount the CD by issuing the following command:

```
pfs_mount -o -xlat=unix /dev/dsk/device_file /mount_point
```

For example:

```
# pfs_mount -o -xlat=unix /dev/dsk/c0t2d0 /cdrom
```

For mounting the CD on Digital UNIX 4.0 systems, the following mount command can be used:

```
mount -t cdfs -o noversion /dev/rz4c /cdrom
```

# Installation

After mounting the CD file system on the target UNIX platform, you can install the BEA Manager software as follows:

1. Change to the directory where the CD is mounted. For example:

```
% cd /cdrom
```

**Note:** Before executing the following command, make sure that the PATH includes access to the `uncompress` utility.

2. Start the installation program.

```
% sh ./install.sh
```

Enter all data carefully. If the installation program encounters any errors it quits, and you have to begin again.

You can stop the installation program at any time by issuing an interrupt, typically by pressing the Delete key, the Break key or Control-C (^C).

3. The installation program presents all of the available hardware/software installation options.

```
01) alpha/dux40      02) hp/hpux1020    03) hp/hpux11
04) ibm/aix42        05) ncr/mpras302    06) seq/dynix42
07) seq/dynix442     08) sgi/irix62      09) sgi/irix64
10) sun5x/sol251
```

Install which platform's files? [01- 10, q to quit, l for list]:

Table 2-1 presents a list of supported platforms.

**Table 2-1 Supported Platforms**

Directory	Hardware	Operating System
alpha/dux40	Digital Alpha	Digital UNIX 4.0
hp/hpux1020	Hewlett-Packard HP 9000 Series 800	HPUX 10.20
hp/hpux11	Hewlett-Packard HP 9000 Series 800	HPUX 11
ibm/aix42	IBM RS6000	AIX 4.2, 4.3
ncr/mpras302	NCR	MPRAS 3.0.2
seq/dynix42	Sequent	Dynix/ptx4.2
seq/dynix442	Sequent	Dynix/ptx4.4.2
sgi/irix62	Silicon Graphics IP22	IRIX6.2
sgi/irix64	Silicon Graphics IP22	IRIX6.4
sun5x/sol251	Sun Sparc	Solaris 2.5.1, 2.6

**Note:** The `ibm/aix42` option should be selected for installation on AIX 4.2.1 or AIX 4.3. The `sun5x/sol251` option should be selected for installation on Solaris 2.5.1 or 2.6.

Select a hardware/software installation option by entering the associated number and pressing the Enter key. You can also enter `l` to list the options again, or `q` to quit the installation.

4. The installation program repeats your selection, identifies the product family to be installed, and asks you to confirm your selection.

```
** You have chosen to install from sun5x/sol251 **
```

```
BEA Manager
```

This directory contains the BEA Manager product(s) for SunOS 5.5.1 (Solaris 2.5.1) on SPARC.

Is this correct? [y,n,q]:

Enter *y* to confirm, *n* to make another selection, or *q* to quit the installation.  
When you have selected an option, press the Enter key to continue.

5. When you have selected and confirmed a platform, the installation program presents you with a list of the specific products that can be installed.

The following packages are available:

1	snmpkit	BEA Manager - Agent Development Kit 4.2
2	snmpint	BEA Manager - Agent Integrator 4.2
3	tuxsnmp	BEA Manager - TUXEDO Agent Connection 2.0
4	logcent	BEA Manager - Log Central 4.0

Select the package(s) you wish to install.

Separate multiple packages with a space.

(type 'all' to install all packages) (default: all) [?,??,q]:

Enter the number or “token” associated with the product you wish to install, two or more numbers separated by spaces to install multiple packages, *all* to install all packages, *?* for an explanation of your possible entries, or *??* to list the options again. When you have selected an option, press the Enter key to continue.

6. When you have selected a package, the installation program displays information about the product and prompts you for a location in the file system where you would like the product installed. If you selected *all* as your installation choice, the installation script begins with the Agent Development Kit:

```
BEA Manager - Agent Development Kit 4.2
(sparc) Release 4.0
Copyright (c) 1998 BEA Systems, Inc.
Portions * Copyright 1986-1998 RSA Data Security, Inc.
All Rights Reserved.
Distributed under license by BEA Systems, Inc.
TUXEDO and BEA M3 are registered trademarks.
BEA Manager and BEA M3 are registered trademarks.
```

Base directory for the BEA Manager files [?,q]:

Enter the location where you would like the product installed and press the Enter key.

The following instructions assume that you have chosen a directory named /usr/BEAManager.

7. If the specified directory does not exist, the installation program creates it and proceeds to install the selected product.

```
Determining if sufficient space is available ...
14694 blocks are required
36439536 blocks are available to /usr/BEAManager

Using /usr/BEAManager as the TUXEDO/M3 base directory

Unloading /usr/BEAManager/sun5x/sol251/snmpkit/BEAMKIT.Z ...

The installation script then prints a list of the files being installed.

14210 blocks
... finished

Modifying configuration files to show installation date/time...
... finished
```

8. When the files have been installed, the installation program asks for the serial number for this installation.

```
Serial number [?,q]:

Enter the serial number from the BEA Manager License Token Certificate and
press the Enter key to continue.
```

9. When you have specified the serial number, the installation program asks for the license token for this installation.

```
License token [?,q]:

Enter the license token from the BEA Manager License Token Certificate and
press the Enter key to continue. Be sure to enter the token exactly as presented,
including capitalization.
```

10. If the serial number and license token are correct, the installation program activates and enables the software.

```
serial=0000000000
token=0123456789ABCDEF
Activating the license for software in /usr/BEAManager ...
... finished

Changing file permissions...
... finished

Installation of BEA Manager - Agent Development Kit 4.2 was
successful
```

11. If you did not select all as your installation choice, skip to step 14. If you selected all as your installation choice, the installation script now proceeds to the installation for the Agent Integrator, Agent Connection, and Log Central packages:

```
BEA Manager - product_name
(sparc) Release n.n
Copyright(c) 1998 BEA Systems, Inc.
Portions * Copyright 1986-1998 RSA Data Security, Inc.
All Rights Reserved.
Distributed under license by BEA Systems, Inc.
TUXEDO and BEA M3 are registered trademarks.

Base directory for the BEA Manager files (default:
/usr/BEAManager) [?,q]:
```

In the preceding, *product\_name* is one of the following:

- ◆ Agent Integrator 4.2
- ◆ Agent Connection 2.0
- ◆ Log Central 4.0

It is recommended that all BEA Manager products be installed under the same base directory. Press the Enter key to accept the default.

12. After installing the files, the installation script asks each time for the license serial number and license token. For convenience, the script displays the previously entered values. If these values are correct, press the Enter key to accept them. If they are not, enter the correct values for your product.

```
Serial number (default: 0000000000) [?,q]:

License token (default:0123456789ABCDEF) [?,q]:
serial=0000000000
token=0123456789ABCDEF
Activating the license for software in /usr/BEAManager
...finished

Changing file permissions...
...finished

Installation of BEA Manager - product_name was successful
```

13. If you entered all as your installation choice, the installation script automatically terminates after the four packages are installed:

```
Installation of BEA Manager - product_name was successful
```

14. If you did not select `all` as your original installation choice, the installation program redisplay the list of options after it finishes installing the packages that you selected for installation:

The following packages are available:

1	<code>snmpkit</code>	BEA Manager - Agent Development Kit 4.2
2	<code>snmpint</code>	BEA Manager - Agent Integrator 4.2
3	<code>tuxsnmp</code>	BEA Manager - TUXEDO Agent Connection 2.0
4	<code>logcent</code>	BEA Manager - Log Central 4.0

Select the package(s) you wish to install (or '`all`' to install all packages) (default: `all`) [`?,??,q`]:

When you have installed all the products you require, enter `q` and press the Enter key to quit.

## Uninstalling BEA Manager Software

The UNIX version of BEA Manager has no special uninstall program. To remove BEA products, just remove the entire installation tree. Ensure first that the tree does not contain files besides BEA Manager that you may want to keep. Before removing the tree, you may want to save some of the BEA Manager files, particularly configuration files, to another directory. Some of the files to back up follow:

◆ `install_dir/etc/beamgr.conf`

◆ `install_dir/etc/beamgr_snmpd.conf`

The files to back up for Log Central only follow:

◆ `install_dir/etc/messaging.conf`

◆ `install_dir/etc/msg_processor.ini`

For the Agent Development Kit, if you have done any development and you want to save that work, the files to back up follow:

◆ The entire tree under `install_dir/agent_src`

In the preceding, `install_dir` is the directory in which you installed the BEA Manager product.

For information on how to migrate MIB source files generated using Agent Development Kit 4.0, refer to the release notes.





# 3 Installation on Windows NT Systems

Before beginning installation of any BEA Manager product:

- ◆ Make sure your system meets or exceeds the requirements listed in Chapter 1, “Preinstallation Notes.”
- ◆ Have your BEA Manager License Token Certificate available.

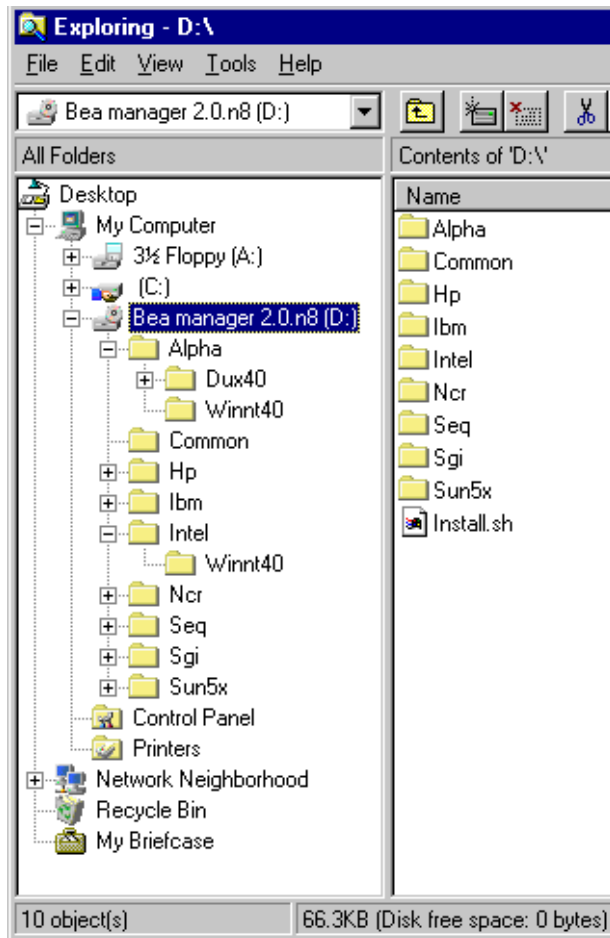
We recommend installing all components that you plan to use of Manager 2.0 at the same time. Otherwise, you must uninstall existing Manager 2.0 components before installing additional components.

**Note:** If you have already installed any components of BEA Manager 1.0, you must uninstall them before proceeding with the installation of the 2.0 products. If you do not uninstall the old components before running the installation program, the installation program overwrites the 1.0 products after first offering you the option of backing up relevant files from the 1.0 installation.

# Installation

The installation CD has a directory called `winnt40` under each of the Windows NT supported platforms, intel and alpha.

1. Use the Explorer to select the appropriate `winnt40` directory on the CD for which you want to install the BEA Manager.



2. Double-click the `setup.exe` program to begin installation of the BEA Manager program.
3. The installation program displays the Welcome dialog box. Click Next to continue.

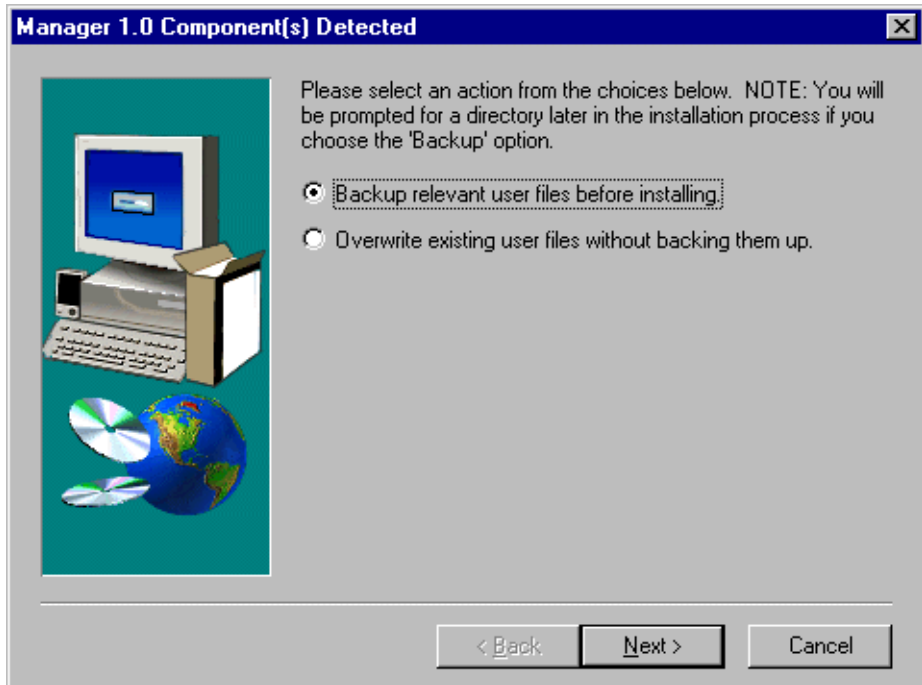


4. The installation program scans your disk looking for installed versions of BEA TUXEDO, BEA M3, or other BEA Manager products. This information is used later in the installation process.

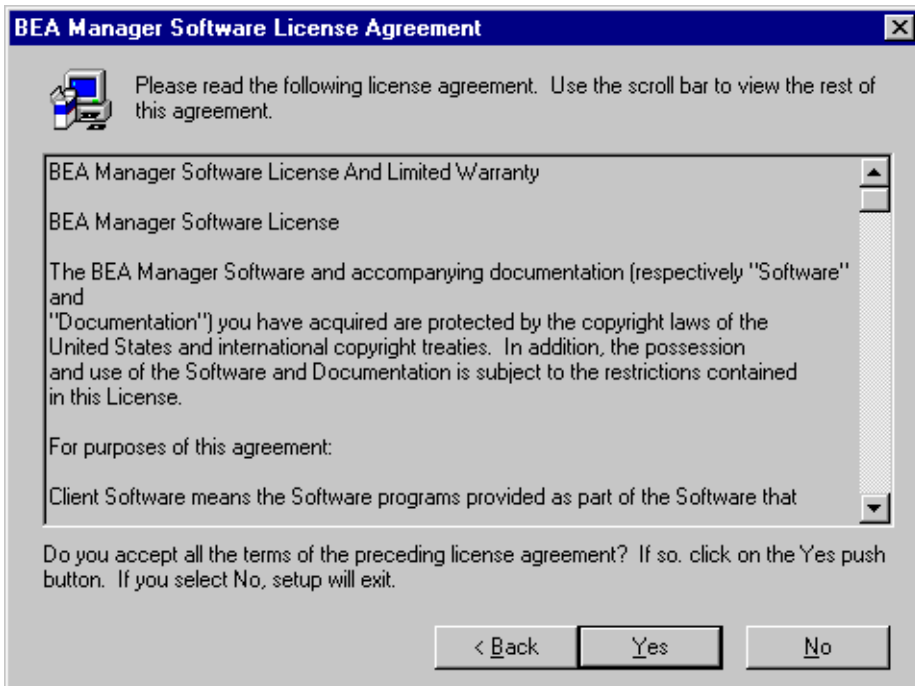
If the installation program finds any BEA Manager 1.0 products, it displays the Components Detected dialog. Specify, by selecting the appropriate radio button, whether to back up relevant files before installing the affected product, or overwrite existing files without backing them up. If you specify backing up, the installation program later offers a choice of where to place the affected files.

**Note:** If you do not specify backing up, the 2.0 installation program overwrites without warning all files installed by the 1.0 installation program.

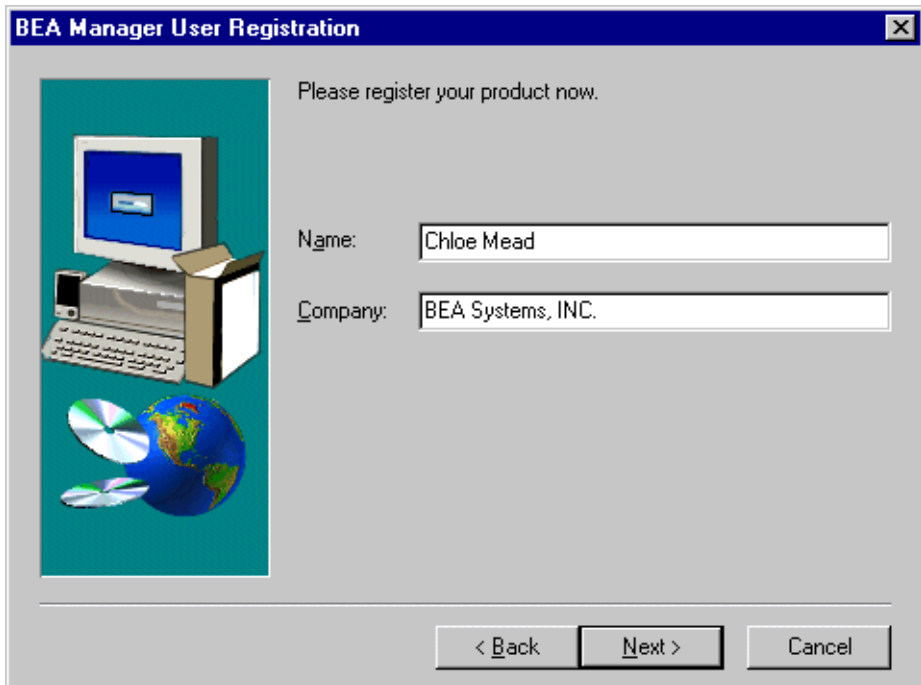
**Note:** If you created source files when building agents with Agent Development Kit 4.0, you may want to migrate these source files to work with Agent Development Kit 4.2. For more information, refer to the *BEA Manager Release Notes*.



5. The installation program displays the BEA Manager software license agreement. Carefully read the entire document before clicking Yes to continue.

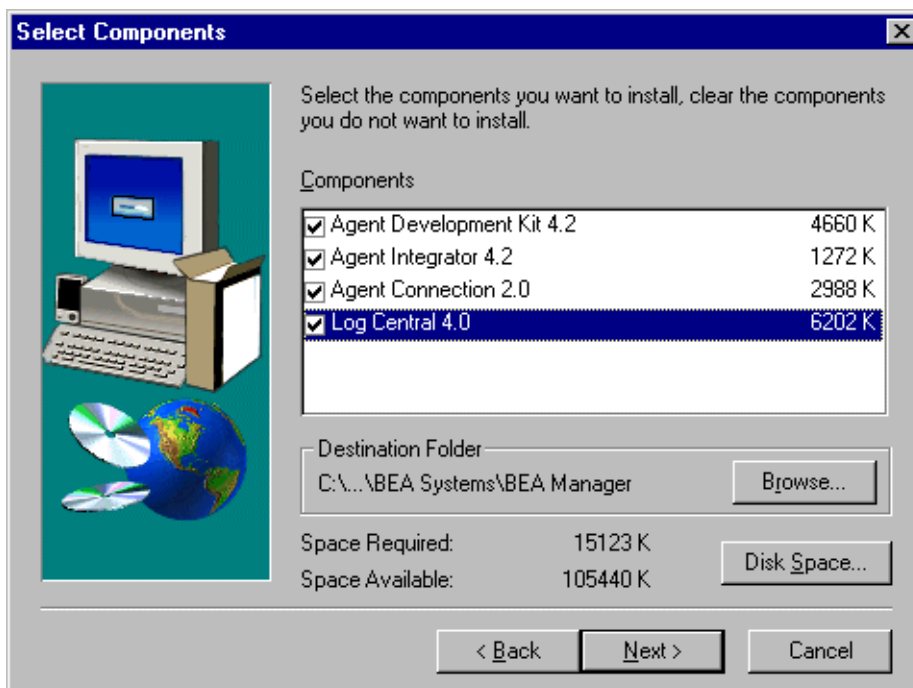


6. The installation program displays the user information dialog box. You should enter the name of the person responsible for this installation and the owner of the software. Click Next to continue.



7. The installation program displays the different BEA Manager products that can be installed in your Windows NT system:
  - ◆ Agent Development Kit 4.2
  - ◆ Agent Integrator 4.2
  - ◆ Agent Connection 2.0
  - ◆ Log Central 4.0

Check the box for each product you want installed.

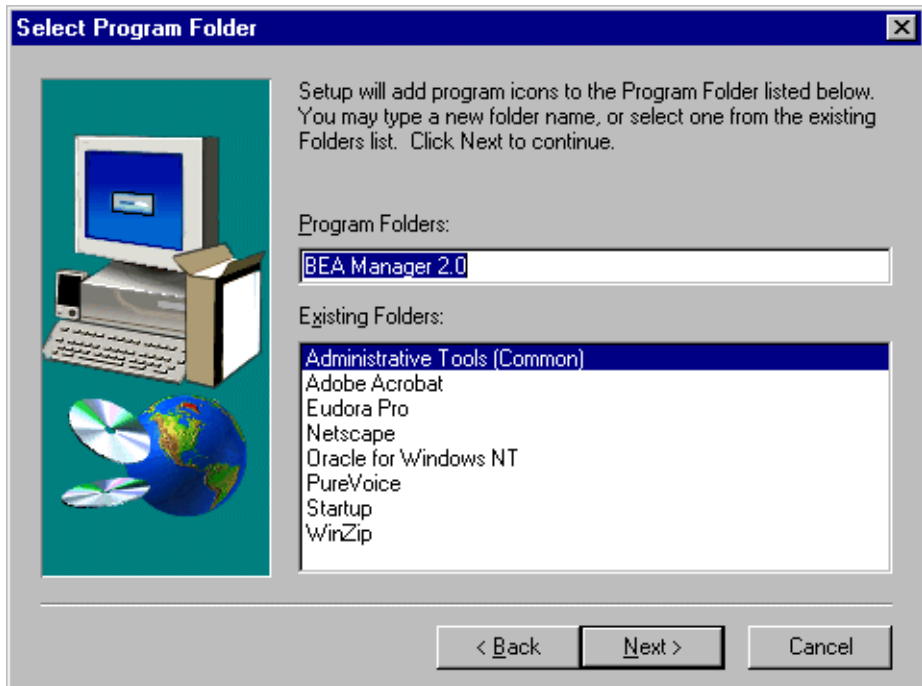


The installation program allows you to select a location for the installed files. If the BEA TUXEDO or BEA M3 product has been installed, the default is set to the location of the BEA TUXEDO files; this is the recommended location on NT. If the BEA TUXEDO or BEA M3 product has not been installed, the default is set to the following:

C:\Program Files\BEA Systems\BEA Manager

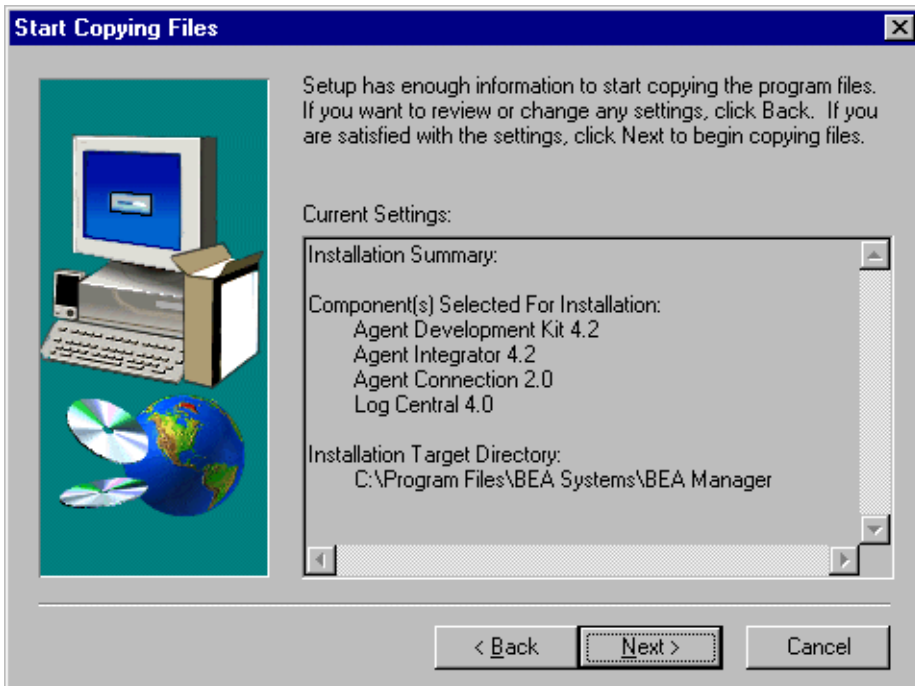
After you have specified the products to install and selected a directory, or if you wish to accept the default directory, click Next to continue.

8. The installation program prompts you to select a program folder into which to add program icons. You can change the suggested name. Click Next to continue.





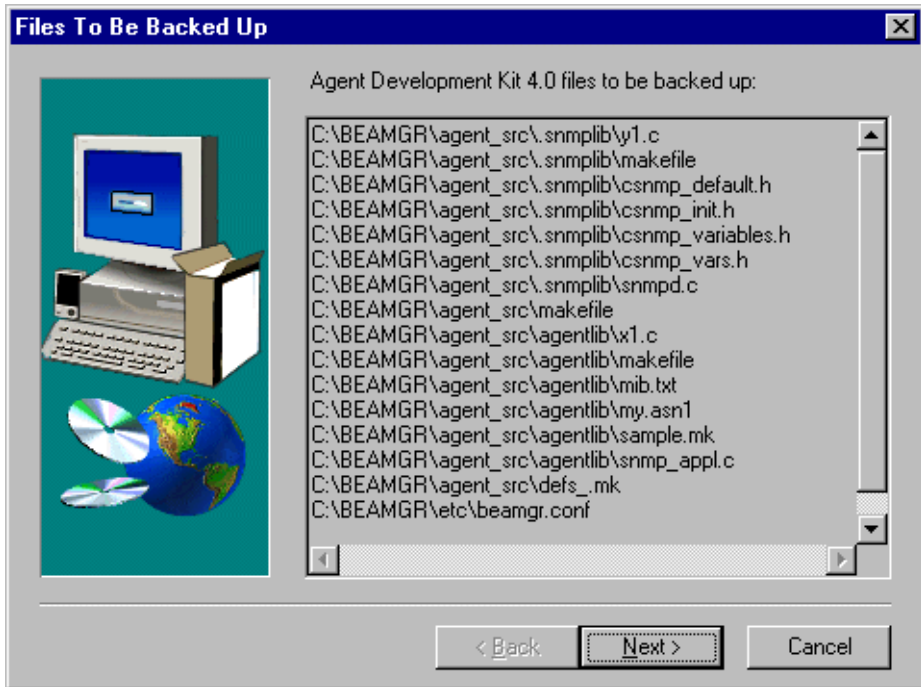
9. The installation program prompts to begin copying files. Click Back to change any settings, or click Next to continue.



If in step 5 you did not specify to back up BEA Manager 1.0 files, skip to step 14.

10. If in step 5 you specified to back up BEA Manager 1.0 files, the installation program displays a list of files that will be backed up, one product at a time. Figure 3-1 shows a typical list presented for the Agent Development Kit. Click Next to continue.

**Figure 3-1 Agent Development Kit Files to Be Backed Up**



11. The installation program prompts you to specify a backup directory into which to copy the files. The default is the following:

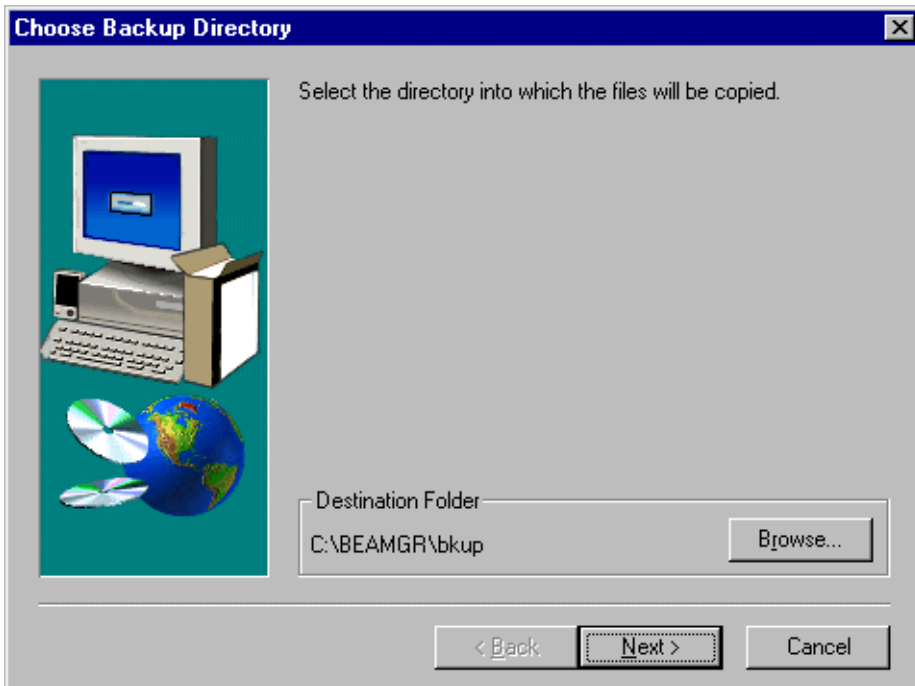
```
C:\1.0_install_dir\bkup
```

The installation program copies files into a product directory beneath this backup directory. For example, if you choose the default, the installation program copies Agent Development Kit files into the following directory:

```
C:\1.0_install_dir\bkup\agent_src
```

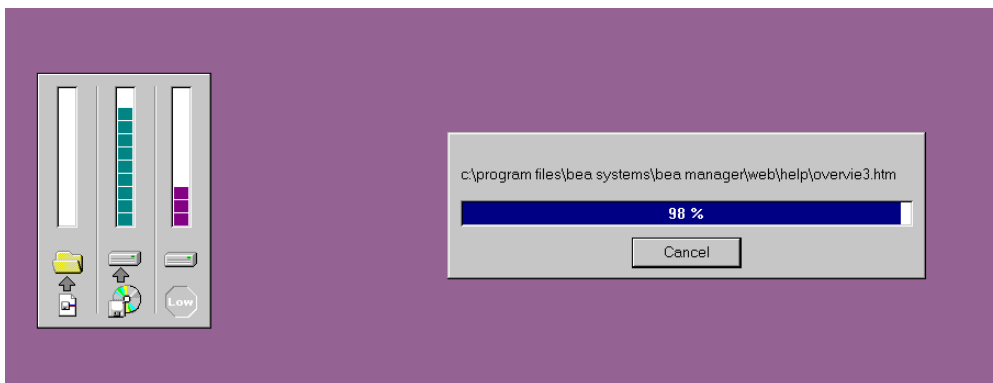
In the preceding, *1.0\_install\_dir* is the directory in which you installed your BEA Manager 1.0 product.

After you have selected a backup directory, or if you wish to accept the default, click Next to continue.

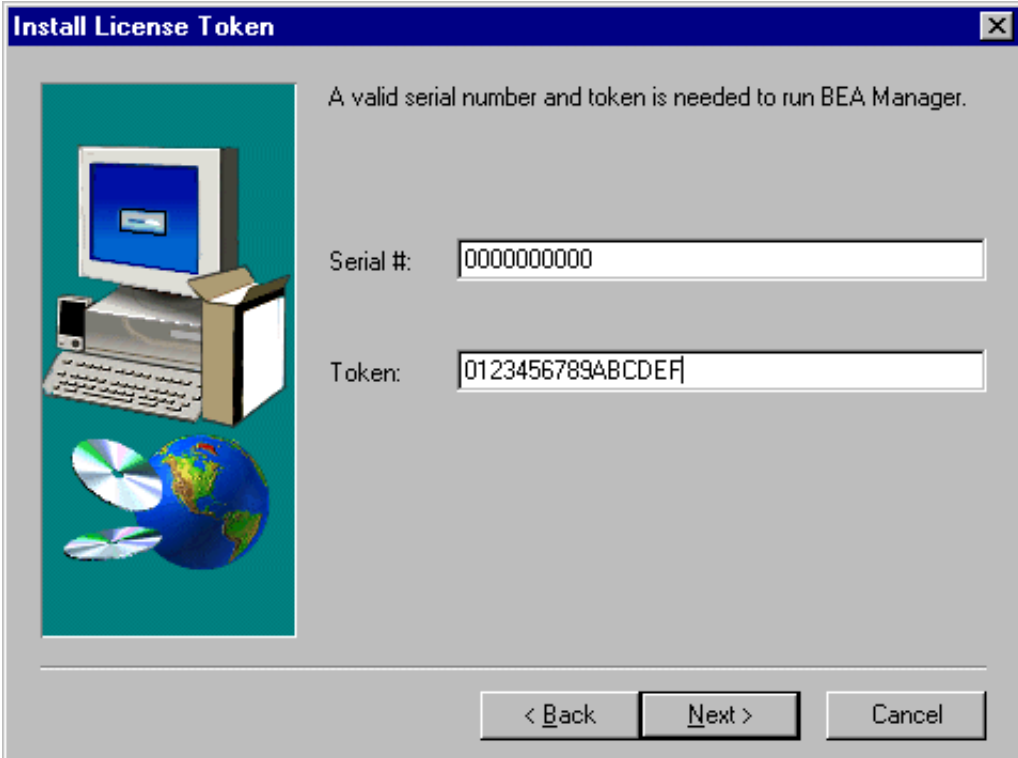


**Note:** If the installation program finds other BEA Manager 1.0 products, you must complete steps 10 and 11 for each of those products.

12. The installation program proceeds to extract, uncompress, and install the files associated with the product you selected.



13. When the files have been installed, the installation program asks you to enter the serial number and licence token for this installation. They can be found on the BEA Manager License Token Certificate. Enter these values and click Next to continue.



**Install License Token**

A valid serial number and token is needed to run BEA Manager.

Serial #: 0000000000

Token: 0123456789ABCDEF

< Back   Next >   Cancel

14. If the serial number and license token are correct, the installation program completes. Click Finish to exit.



15. If you selected installation of Log Central in step 7, run the following commands at the command prompt:

```
CD install_dir\bin
instsrv pm_snmpd install_dir\bin\pm_snmpd.exe
```

This step installs the Process Monitor SNMP Agent as an NT service.

In the preceding command, *install\_dir* is the directory in which you installed the BEA Manager product. You must specify the full path in the *instsrv* command (not a relative path).

# Uninstalling BEA Manager Software

To uninstall the BEA Manager product from the Windows NT system, proceed as follows:

1. If you previously installed Log Central, run the following command at the command prompt:

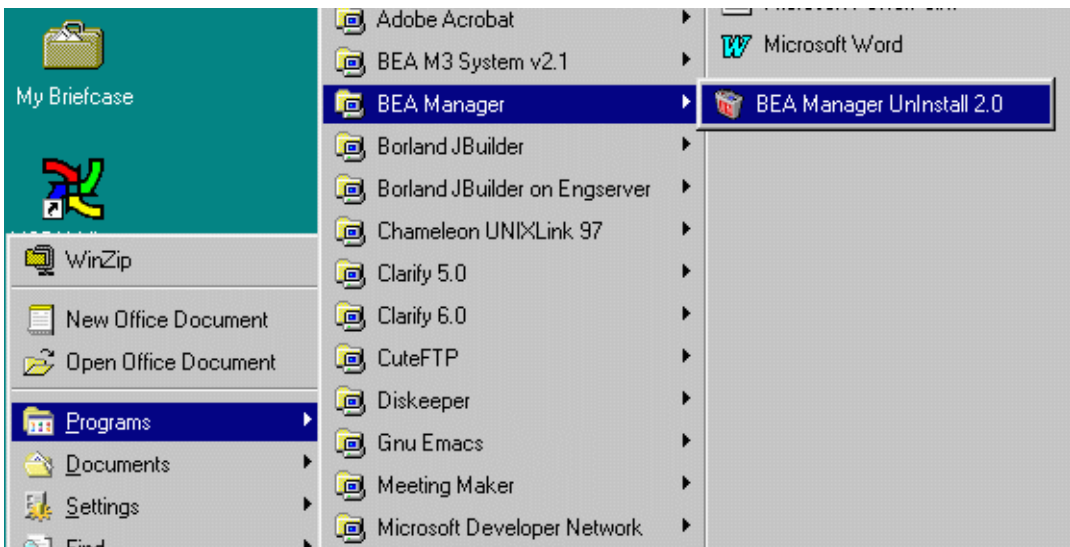
```
CD install_dir\bin
instsrv pm_snmpd remove
```

This step removes the Process Monitor SNMP Agent as an NT service.

In the preceding command, *install\_dir* is the directory in which you installed the BEA Manager product.

2. Select BEA Manager from the Start menu.
3. Select BEA Manager Uninstall 2.0, as shown in Figure 3-2.

**Figure 3-2 Uninstall BEA Manager**



4. In response to the Confirm File Deletion prompt, click OK to remove BEA Manager.
5. When uninstall is completed, the screen shown in Figure 3-3 is displayed. Click OK to continue.

**Figure 3-3 Uninstall Completion**

