

Installing Financial Message Designer for AquaLogic Service Bus

Version 3.4

Information in this document is subject to change without notice and does not represent a commitment on the part of BEA, Inc. The software described in this document is furnished under a license agreement. The software may be used or copied only in accordance with that agreement. No part of this guide may be reproduced or retransmitted in any form or by any means electronic, mechanical, or otherwise, including photocopying and recording for any purpose other than the purchaser's personal use without the written permission of BEA, Inc.

Copyright © 2007 BEA, Inc. All rights reserved. All BEA Products are trademarks or registered trademarks of BEA, Inc. Other brand and product names are trademarks or registered trademarks of their respective holders.

INTRODUCTION	4
SYSTEM REQUIREMENTS	6
INSTALLATION	7
INSTALLING FINANCIAL MESSAGE DESIGNER FOR AQUALOGIC SERVICE BUS	7
INSTALLING COMPONENTS	17
LICENSING.....	17
STARTING FINANCIAL MESSAGE DESIGNER FOR AQUALOGIC SERVICE BUS.....	17
EXECUTING RUNTIME.....	18
UNINSTALLING FINANCIAL MESSAGE DESIGNER FOR AQUALOGIC SERVICE BUS.....	18

Introduction

What is FMD?

In general, processing of a message results in generation of another message. For example, when a new order message is processed, an invoice message needs to be generated. This can be thought of as conversion/transformation of one message to another message. Thus, message transformation is the process of converting/transforming one message to another message.

Financial Message Designer BEA provides a standard procedure for message transformation. At a basic level, it involves conversion of an external input message to an internal message (input transformation) and conversion of an internal message to an external output message (output transformation). Here, an internal message is a message standardized for use by the enterprise for a particular processing and an external message is a message defined outside the enterprise very often by a standards group (such as SWIFT).

Input transformation allows external messages of different standards (such as FIX, SWIFT), but for the same purpose, to be transformed into an internal message such that they are all processed in the same way.

Output transformation enables an internal message to be transformed into external messages of different standards, if required.

FMD suite involves the following applications and they are explained below.

- [Financial Message Designer for AquaLogic Service Bus](#) and its [Components](#)
- [Runtime](#)

Financial Message Designer for AquaLogic Service Bus

Financial Message Designer for AquaLogic Service Bus is an integrated environment used for creating and managing a cartridge, which is a model that captures message formats, message mappings and message flows. Once a cartridge design is completed, it can be generated into platform specific code and deployed into Runtime. Once deployed, the runtime becomes capable of performing the transformations defined by that cartridge.

The Simulator application integrated with Designer allows testing of the components generated for the message, message mapping and message flow elements of a cartridge including persistence of messages. See the section [Installing Financial Message Designer for AquaLogic Service Bus](#) for information about installing Financial Message Designer for AquaLogic Service Bus.

Runtime

Once a cartridge design is completed, it can be generated into platform specific code. Designer supports code generation in Java/EJB platform. The generated code is bundled into components as specified in the code generation settings. These components can then be deployed under the platform specific runtime. Once deployed, the runtime becomes capable of performing the transformations defined by that cartridge.

Components

The distribution includes the components listed in the following table. Please note that the actual products in your distribution will depend on the products you have licensed. See the section [Installing Components](#) for information about installing Designer components.

ASCII Fixed Width Format Plug-in	This component allows creation of external messages in ASCII Fixed Width format.
XML Format Plug-in	This component allows creation of external messages in XML format.
FIX Format Plug-in	This component allows creation of external messages in FIX format.
SWIFT Format Plug-in	This component allows creation of external messages in SWIFT format.
FCS/CMS Format Plug-in	This component allows creation of external messages in FCS/CMS format.
Universal Format Plug-in	This component allows creation of external messages in Universal format.
Web Forms Designer	This component allows designing web pages for internal messages.
SEPA	This component allows creation of external messages in XML (with ISO 20022 messages) format and Universal format. This also includes some SEPA messages.
SWIFT Messages	This component allows the SWIFT certified messages to be included with the SWIFT format.

Composer	This component is the base for all other components. The installation of all other components depends on Composer.
Conductor	This component allows creation of message flows.

Make sure to read ReleaseNotes.doc under the '`<Designer-Root-Install Dir>\docs\ReleaseNotes`' directory that contains information about the following:

- Compatibility
- What's New
- Open Issues
- Upgrade Issues

See Also:

[System Requirements](#)

[Installation](#)

[Licensing](#)

[Starting Financial Message Designer for AquaLogic Service Bus](#)

[Executing Runtime](#)

[Uninstalling Financial Message Designer for AquaLogic Service Bus](#)

System Requirements

The following table lists the system requirements.

BEA Products	AquaLogic Service Bus 2.6 RP1 (required)
O/S	Designer requires Windows family of operating system preferably Windows NT platform (NT4, 2000, XP or 2003). The Java runtime is supported on any O/S that supports the Java 1.5 platform or later.
RAM	A minimum of 512 MB
Hard Disk Space	A minimum of 500 MB
CPU	Pentium III or higher with clock speed of 400 MHz or higher

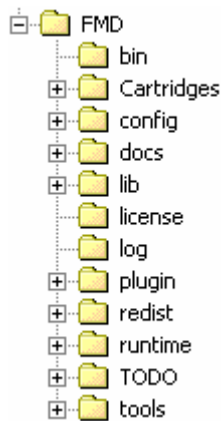
See Also:

[Installation](#)

Installation

The setup program for Financial Message Designer for AquaLogic Service Bus is available as EXE file that can be run only under Windows family of operating systems. During first installation, Composer should be installed with other components as other components installation depend on Composer and the components can be installed in any order.

The directory structure of Financial Message Designer for AquaLogic Service Bus after installation is as shown below.



See Also:

[Installing Financial Message Designer for AquaLogic Service Bus](#)

[Installing Components](#)

[System Requirements](#)

[Licensing](#)

[Starting Financial Message Designer for AquaLogic Service Bus](#)

[Executing Runtime](#)

[Uninstalling Financial Message Designer for AquaLogic Service Bus](#)

Installing Financial Message Designer for AquaLogic Service Bus

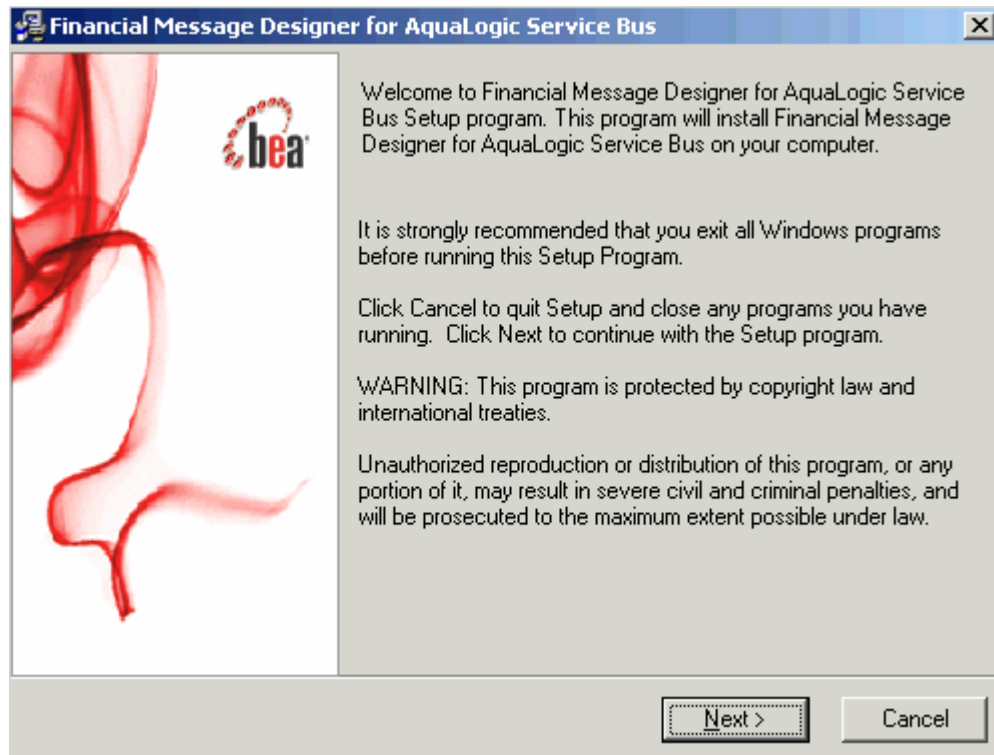
It is very easy to install Financial Message Designer for AquaLogic Service Bus and the information that are required during installation are,

1. BEA Home location
2. JRE Home location
3. License file location
4. Installation location (destination directory).

In other sections of this document, the installation directory is referred to as the root installation directory of Designer. Follow the steps given below to install Financial Message Designer for AquaLogic Service Bus.

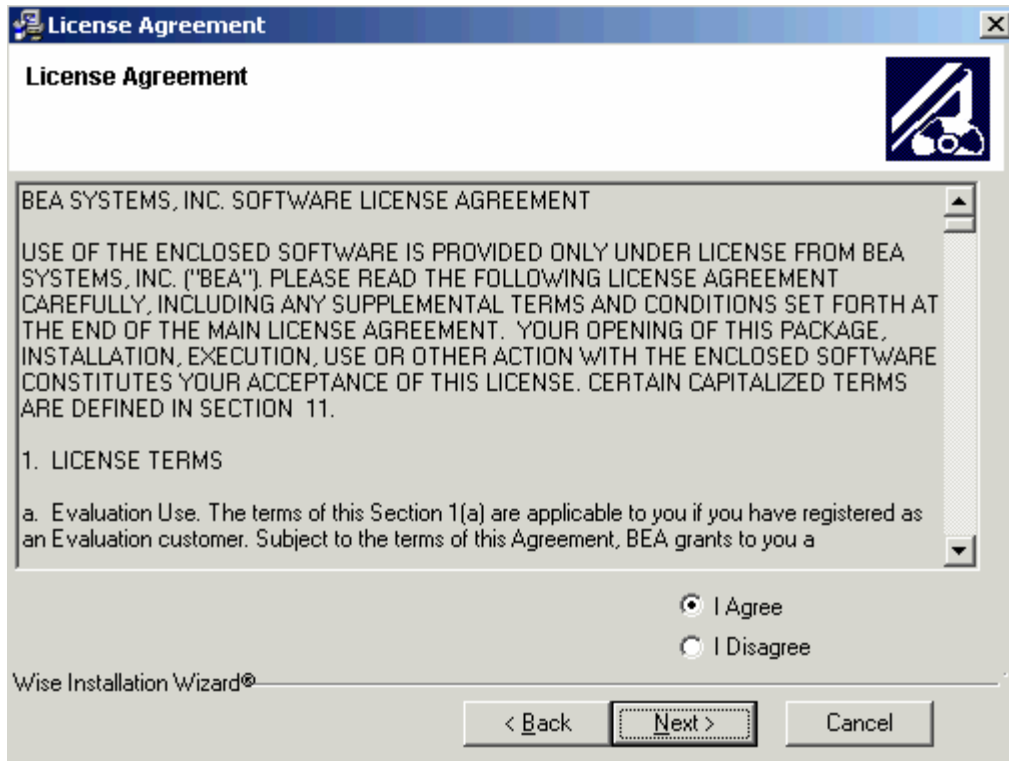
1. Run the setup program `fmd_alsb260.exe`. For this you can double click on the file from Windows Explorer.

The Welcome page of installation wizard will appear and the wizard will guide you through the installation process.



2. Click the Next button

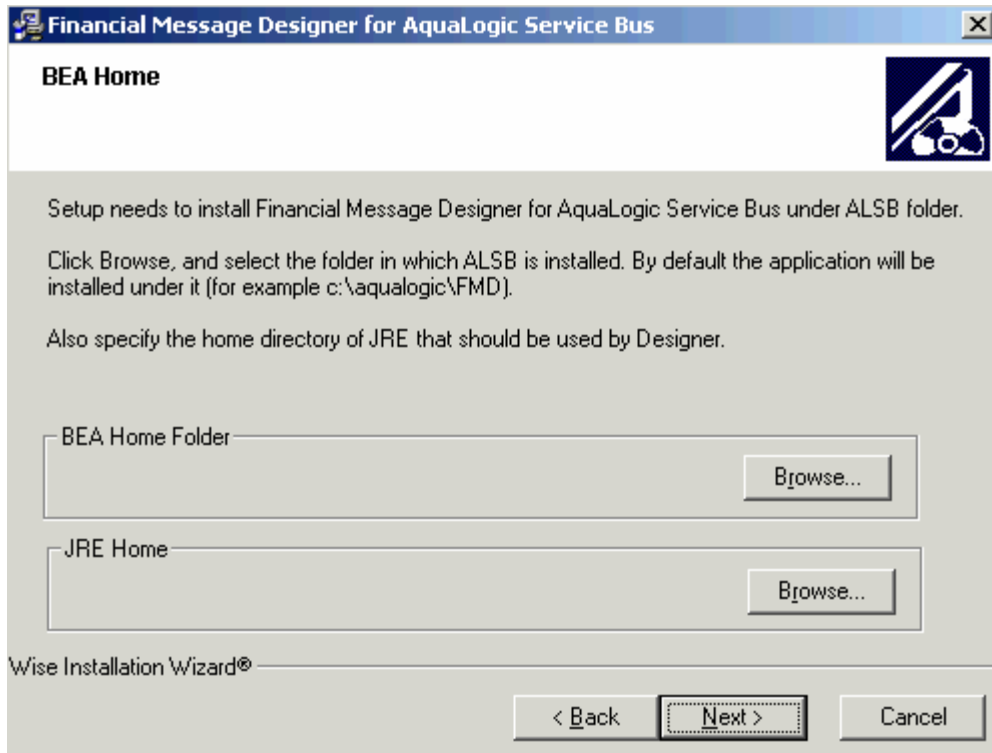
The 'License Agreement' page will appear.



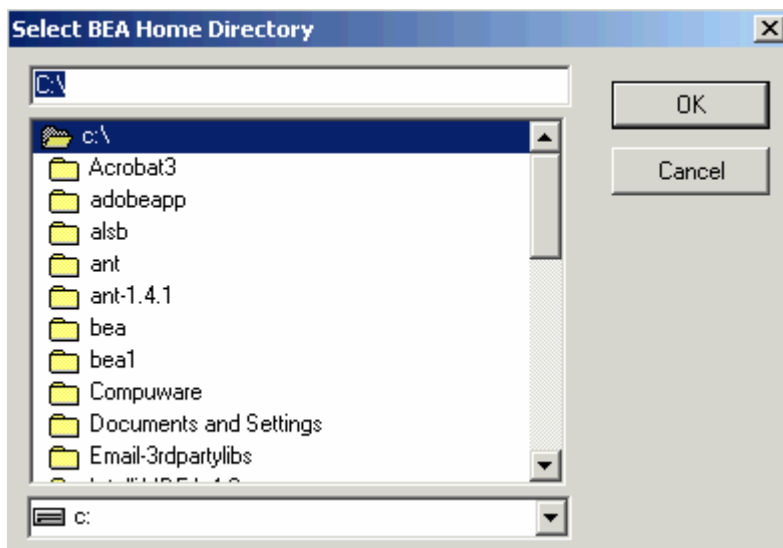
You can continue with installation only when you accept the license.

3. Click the Next button.

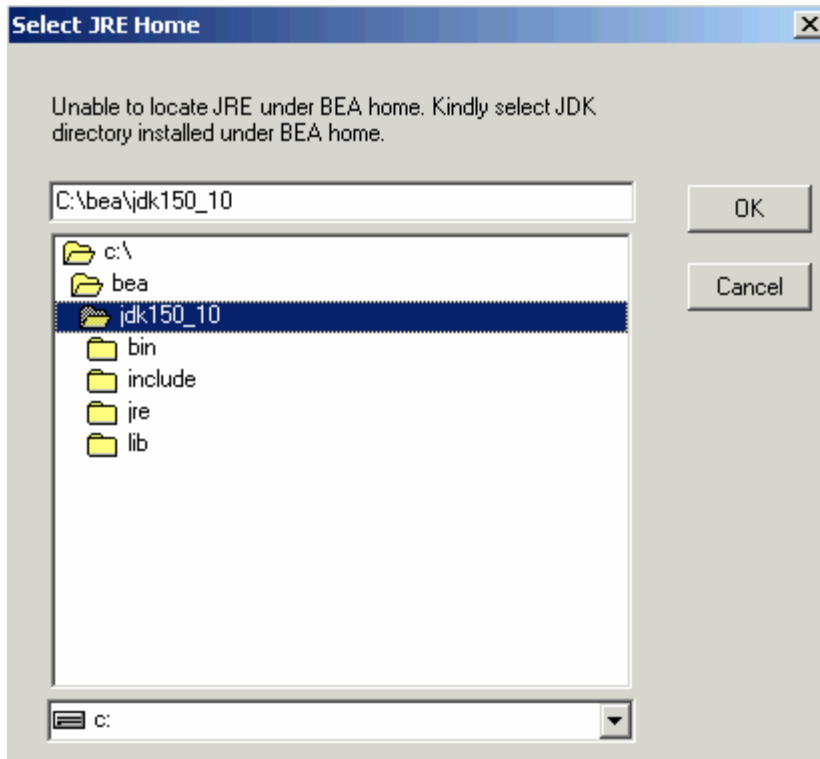
The 'BEA Home' page will appear.



4. Select the BEA Home directory using the 'Select BEA Home Directory' dialog that will be shown when you click on the Browse button in the 'BEA Home Folder' pane.

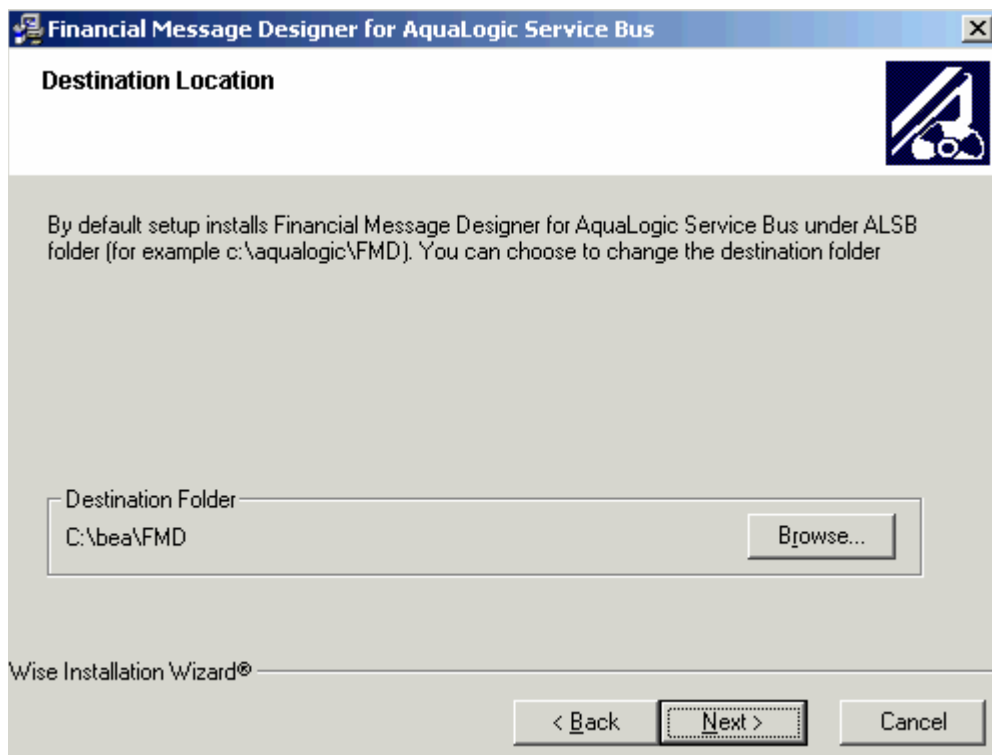


5. Select the JRE Home directory using the 'Select JRE Home' dialog that will be shown when you click on the Browse button in the 'JRE Home' pane.

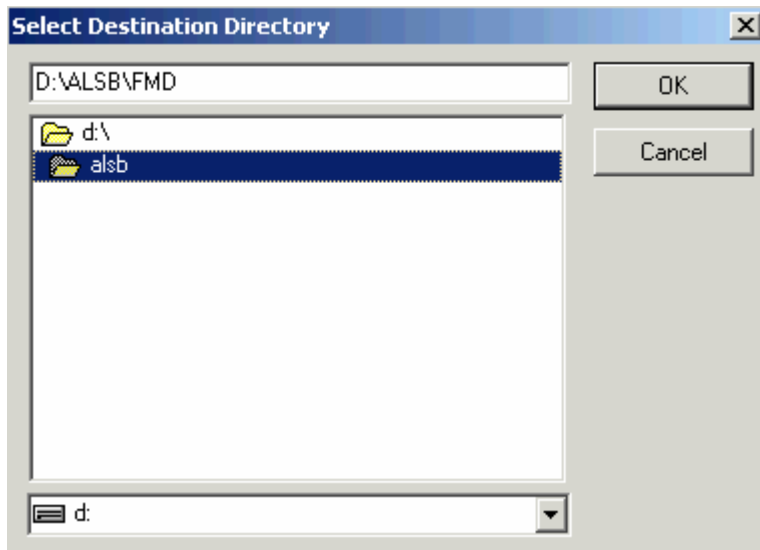


6. Click on the Next button.

'Destination Location' page will appear.

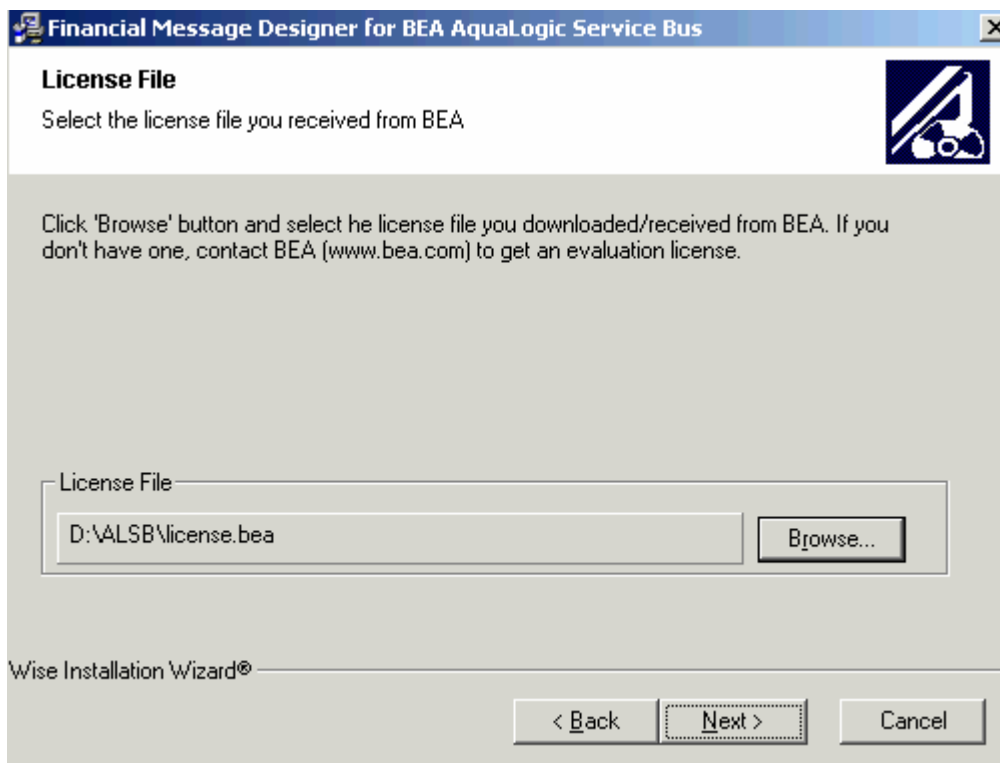


7. If you want to install Financial Message Designer for AquaLogic Service Bus in a directory different from that of the one shown by the wizard, select that directory using the 'Select Destination Directory' dialog that will be shown when you click on the Browse button.

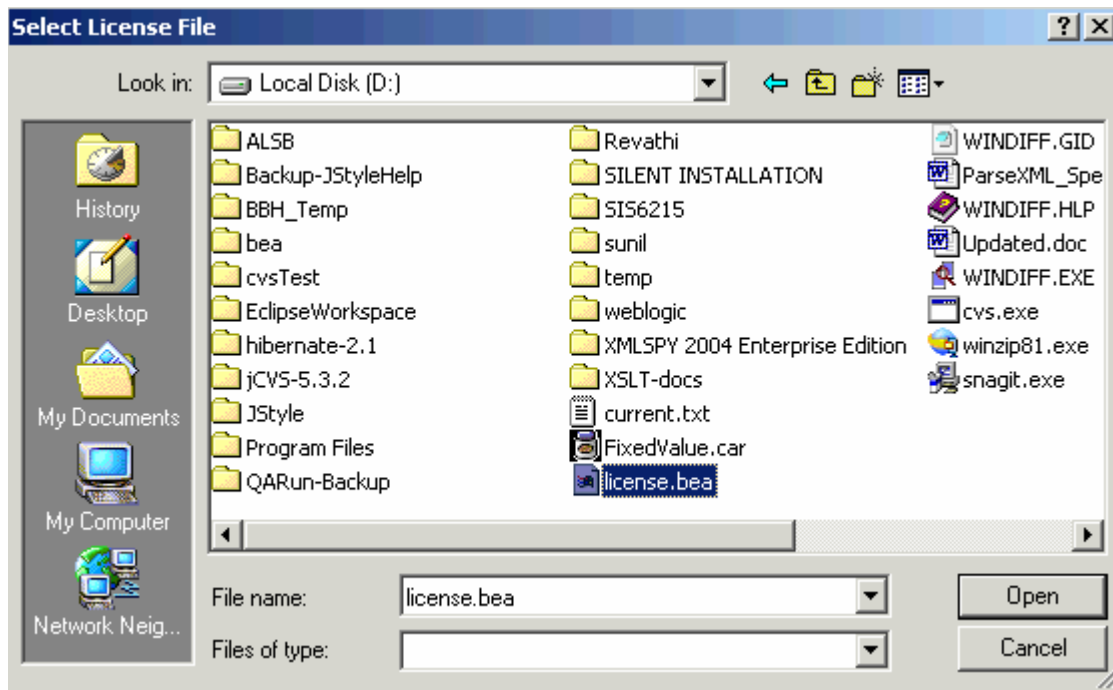


8. Click on the Next button.

'License file' page will appear.

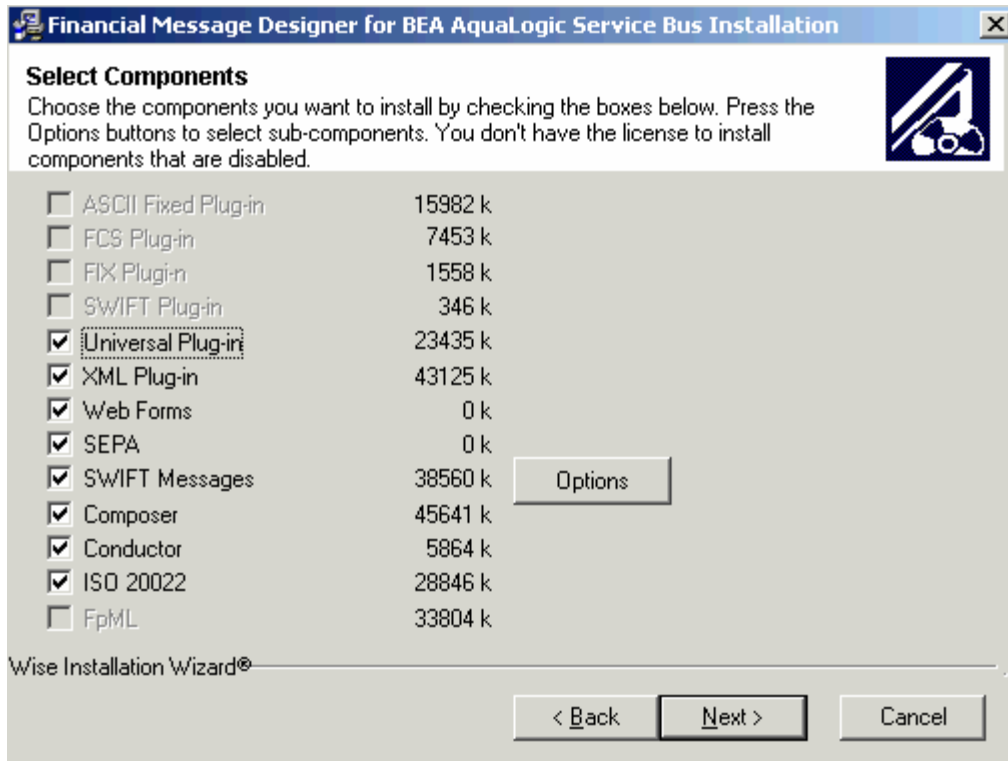


9. If you want to select a license file different from that of the one shown, select the license file using the 'Select License File' dialog that will be shown when you click on the Browse button.

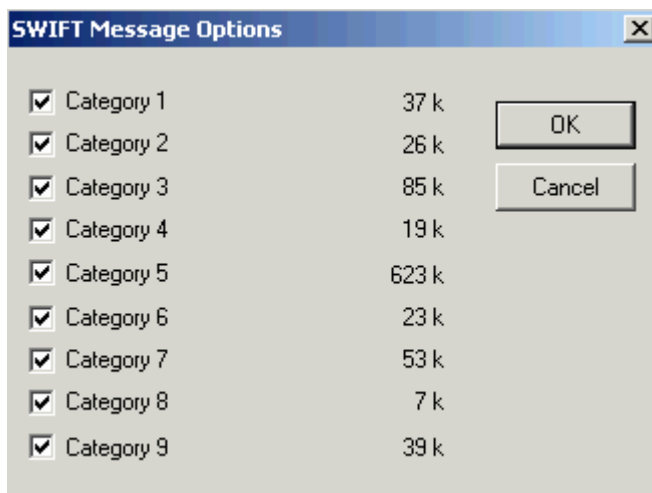


10. Click Next button.

The 'Select Components' page will appear.



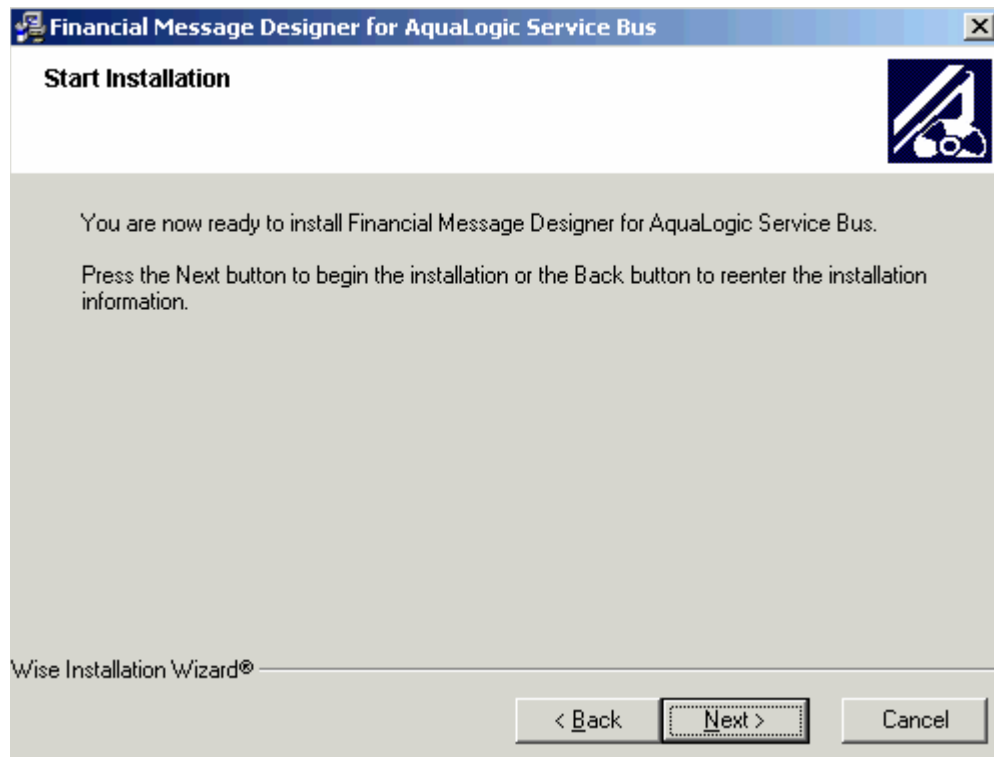
11. The components in distribution depends on the license file. You can uncheck the components that are not required for this installation. Please note that during first installation Composer should not be unchecked as installation of other components depends on Composer.
12. Clicking on the Options button will open the 'SWIFT Message Options' dialog.



Please note that the SWIFT categories that are available depends on the license file.

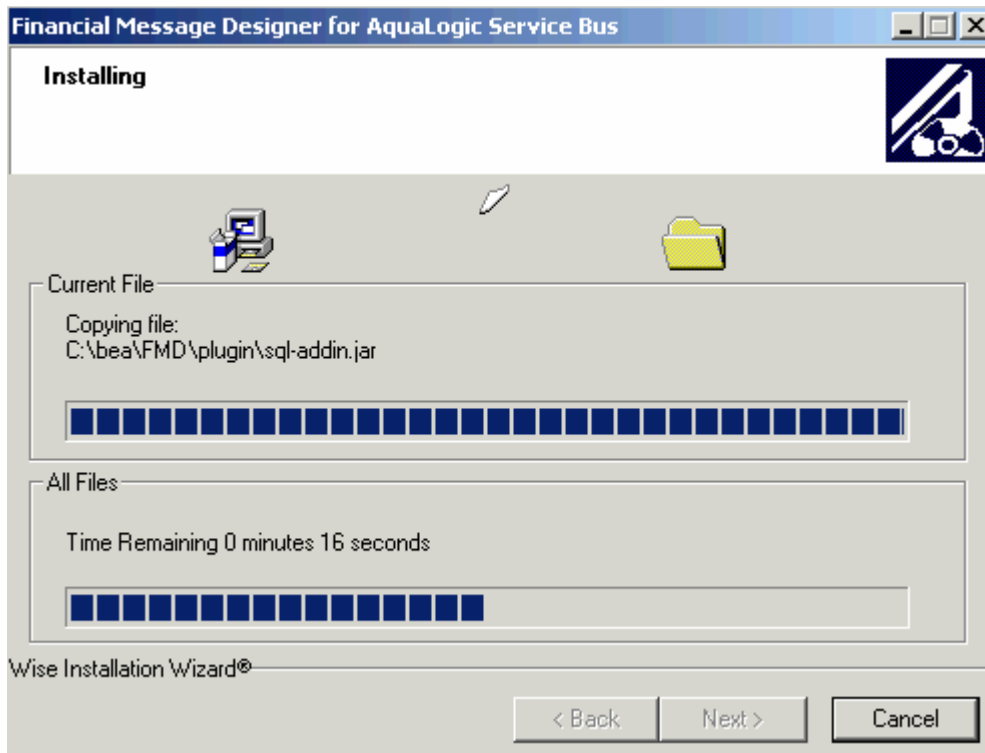
13. Click Next button.

The 'Start Installation' page will be displayed indicating that the wizard is ready to install Financial Message Designer for AquaLogic Service Bus.

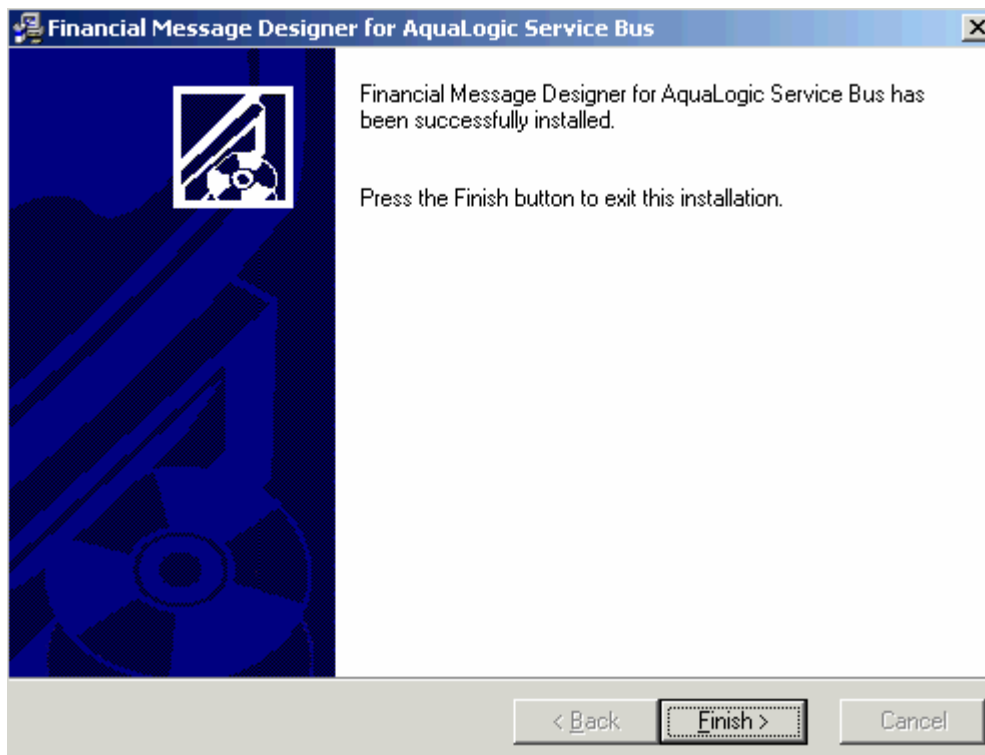


14. Click the Next button to begin installing Financial Message Designer for AquaLogic Service Bus.

The 'Installing' page will appear and it includes progress bars to indicate the current status.



The following page will be displayed indicating the successful completion of installation.



15. Clicking the Finish button will complete the Installation of 'Financial Message Designer for AquaLogic Service Bus'.

See Also:

[Installation](#)

Installing Components

The steps required to install a component are same as that of installing Financial Message Designer for AquaLogic Service Bus. You must be careful to install the components under the root installation directory of Financial Message Designer for AquaLogic Service Bus. For example, if Financial Message Designer for AquaLogic Service Bus is installed under the **C:\bea\FMD** directory, the components should also be installed under the **C:\bea\FMD** directory. Please note that when you install additional components, only check the components that needs to be installed. Uncheck all the other components including composer (since composer is already installed).

See Also:

[Installation](#)

Licensing

Licensing for 'Financial Message Designer for AquaLogic Service Bus' depends on the license file. The license file has the list of components that the user has licensed. The distribution will always have a default license file. Optionally the user can obtain a permanent license file. If there is no permanent license file, installer will use the default license file that is received with the distribution.

During installation of Financial Message Designer for AquaLogic Service Bus, the installer will prompt for the location of license file. Based on this the installer will selectively install only the licensed components. This same mechanism will be used if the user needs to install additional components.

See Also:

[Installation](#)

[Starting Financial Message Designer for AquaLogic Service Bus](#)

Starting Financial Message Designer for AquaLogic Service Bus

To start Financial Message Designer for AquaLogic Service Bus, select the **Programs** group from the **Start** menu and then select **Designer** menu item from the **Financial Message Designer for BEA AquaLogic Service Bus** menu.

The Designer utilities are available under the 'tools' subdirectory of the root installation directory of Financial Message Designer for AquaLogic Service Bus. The batch files for the tools assume that you are working on Windows NT based platform (Windows 2000, XP or 2003).

See Also:

[Installation](#)

[Executing Runtime](#)

Executing Runtime

The runtime depends on the platform in which you have generated code for a cartridge. You need to deploy the generated components under the platform specific runtime to perform transformations defined in the components. Financial Message Designer for AquaLogic Service Bus supports code generation in Java/EJB platform. If you have generated code in Java platform, the generated components can be deployed under the runtime environment: EJB Server under Weblogic as AquaLogic Service Bus resource.

See Also:

[Starting Financial Message Designer for AquaLogic Service Bus](#)

Uninstalling Financial Message Designer for AquaLogic Service Bus

Financial Message Designer for AquaLogic Service Bus and its components can be uninstalled using the following syntax.

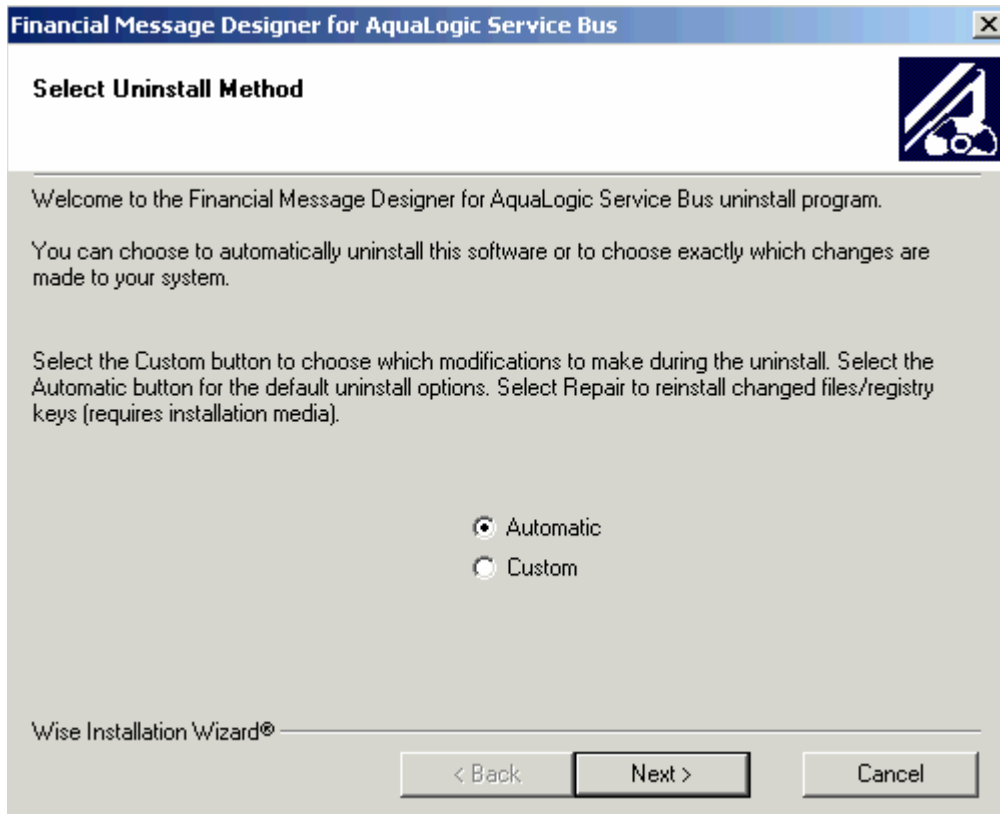
UNWISE.EXE <installation log file>

Here, <installation log file> refers to the name of the log file created during installation of Financial Message Designer for AquaLogic Service Bus. The user should specify the name of the installation log file corresponding to Financial Message Designer for AquaLogic Service Bus.

Follow the steps given below to uninstall Financial Message Designer for AquaLogic Service Bus or any of its installed components.

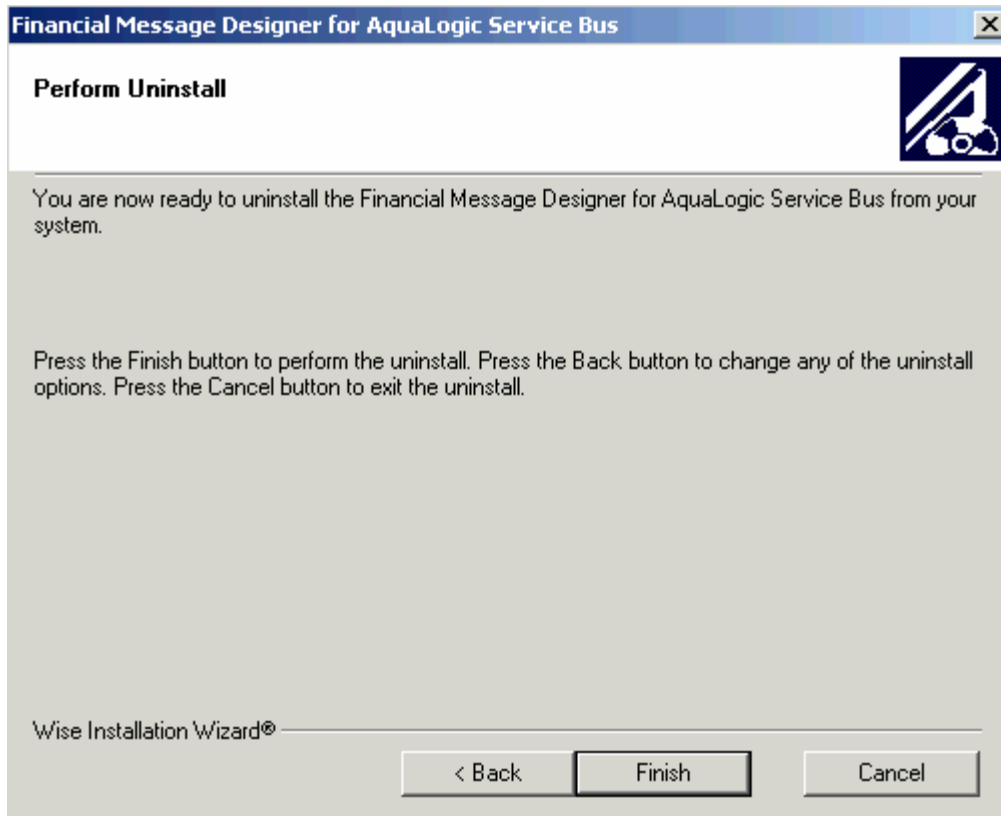
1. Invoke the UNWISE.EXE program by passing it the name of the installation log file corresponding to Financial Message Designer for AquaLogic Service Bus.

The 'Select Uninstall Method' dialog will be shown.

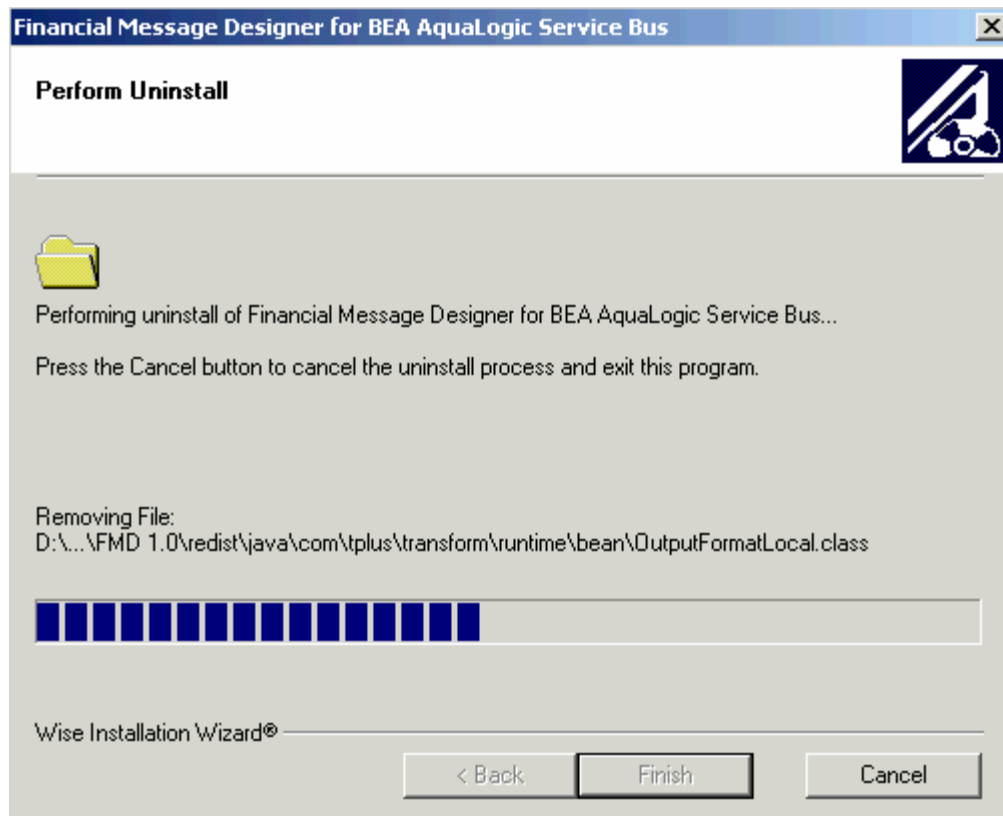


2. Select the Automatic option (recommended) and click on the Next button.

The 'Perform Uninstall' dialog will be shown.



3. Click on the Finish button to start uninstalling Volante Designer corresponding to the specified installation log file.



When uninstall is completed the dialog exits and all the files are removed from the destination folder.

See Also:

[Installing Financial Message Designer for AquaLogic Service Bus](#)
[Installing Components](#)