



QuickClip Portlet, BEA WebLogic Edition

Installation Guide

Version 6.2
February 2007



Copyright

Copyright © 1995-2005 BEA Systems, Inc. All Rights Reserved.

Restricted Rights Legend

This software is protected by copyright, and may be protected by patent laws. No copying or other use of this software is permitted unless you have entered into a license agreement with BEA authorizing such use. This document is protected by copyright and may not be copied, photocopied, reproduced, translated, or reduced to any electronic medium or machine readable form, in whole or in part, without prior consent, in writing, from BEA Systems, Inc.

Information in this document is subject to change without notice and does not represent a commitment on the part of BEA Systems.

THE DOCUMENTATION IS PROVIDED "AS IS" WITHOUT WARRANTY OF ANY KIND INCLUDING WITHOUT LIMITATION, ANY WARRANTY OF MERCHANTABILITY OR FITNESS FOR A PARTICULAR PURPOSE. FURTHER, BEA SYSTEMS DOES NOT WARRANT, GUARANTEE, OR MAKE ANY REPRESENTATIONS REGARDING THE USE, OR THE RESULTS OF THE USE, OF THE DOCUMENT IN TERMS OF CORRECTNESS, ACCURACY, RELIABILITY, OR OTHERWISE.

Trademarks and Service Marks

Copyright © 1995-2005 BEA Systems, Inc. All Rights Reserved. BEA, BEA JRockit, BEA WebLogic Portal, BEA WebLogic Server, BEA WebLogic Workshop, Built on BEA, Jolt, JoltBeans, SteelThread, Top End, Tuxedo, and WebLogic are registered trademarks of BEA Systems, Inc. BEA AquaLogic, BEA AquaLogic Data Services Platform, BEA AquaLogic Enterprise Security, BEA AquaLogic Service Bus, BEA AquaLogic Service Registry, BEA Builder, BEA Campaign Manager for WebLogic, BEA eLink, BEA Liquid Data for WebLogic, BEA Manager, BEA MessageQ, BEA WebLogic Commerce Server, BEA WebLogic Communications Platform, BEA WebLogic Enterprise, BEA WebLogic Enterprise Platform, BEA WebLogic Enterprise Security, BEA WebLogic Express, BEA WebLogic Integration, BEA WebLogic Java Adapter for Mainframe, BEA WebLogic JDriver, BEA WebLogic Log Central, BEA WebLogic Network Gatekeeper, BEA WebLogic Personalization Server, BEA WebLogic Personal Messaging API, BEA WebLogic Platform, BEA WebLogic Portlets for Groupware Integration, BEA WebLogic Server Process Edition, BEA WebLogic SIP Server, BEA WebLogic WorkGroup Edition, Dev2Dev, Liquid Computing, and Think Liquid are trademarks of BEA Systems, Inc. BEA Mission Critical Support, BEA Mission Critical Support Continuum, and BEA SOA Self Assessment are service marks of BEA Systems, Inc.

All other names and marks are property of their respective owners

Contents

| | |
|---|-------------------------------------|
| QuickClip Portlet, BEA WebLogic Edition | 1 |
| Installation Guide..... | 1 |
| Contents | iii |
| Installation Guide..... | 1 |
| Installing the software..... | 1 |
| Domain Upgrade..... | Error! Bookmark not defined. |
| Adding QuickClip Portlet to your Portal Project..... | 3 |
| Files Installed under the WEB-INF Folder..... | 4 |
| Files Installed in the quickclip Folder | 4 |

Installation Guide

This guide describes how to install the BEA WebLogic QuickClip Portlet extension to a BEA WebLogic Portal 9.2 installation and add the QuickClip Portlet to a given domain and a given portal.

Installing the software

Once you have downloaded the QuickClip Portlet, BEA WebLogic Edition installer, run it. The installer will do two things: install all the necessary files in a BEA WebLogic installation for this to create portals that use the QuickClip Portlet, and install a Kapow RoboSuite 6.2, BEA WebLogic Edition trial version. This version of Kapow's RoboSuite platform consist of a runtime component that may be used in production to run QuickClip portlet request and may additionally be used as for evaluating all the other features that the RoboSuite platform offers.

1. On the first page of the installer press the Next button to start installation process (this does not start the actual installation yet; you need to supply some information first.
2. On the next page of the installer read and accept the License Agreement. If you don't accept, the installer will terminate and nothing will be installed. Press the Next button to continue to the next page of the installer.
3. On this page you must choose a BEA home directory for a BEA WebLogic 9.2 installation to install the QuickClip Portlet files in. This would normally be a directory called `bea` and contain a folder called `workshop92`. Notice that your WebLogic Home director must be called `workshop92` for the installation to work correctly¹. Enter the path for your BEA Home or browse for this. When you have done this, press the Next button to continue to the next page of the installer.
4. On the next page of the installation wizard you can choose where to create application shortcuts. This means where you want to create shortcuts to access the components of RoboSuite, for example, RoboServer, which is a requirement for running QuickClip Portlets. If you choose not to create any shortcuts, it will harder for you to get access to starting a RoboServer when you need to run a QuickClip Portlet or find the documentation. So it is recommended that you install these shortcuts.
5. On the next and final page of the installation wizard you will see a summary of how you have configured the installation. Read this and make sure that it contains the correct information and if so press Install to complete the installation.

¹ If your Workshop for WebLogic home is not called `workshop92` you can still proceed with installation, but then the installer will create folder called `workshop92` under your BEA home and you must afterwards copy all files in this folder to our own WebLogic home folder afterwards.

Installing the software

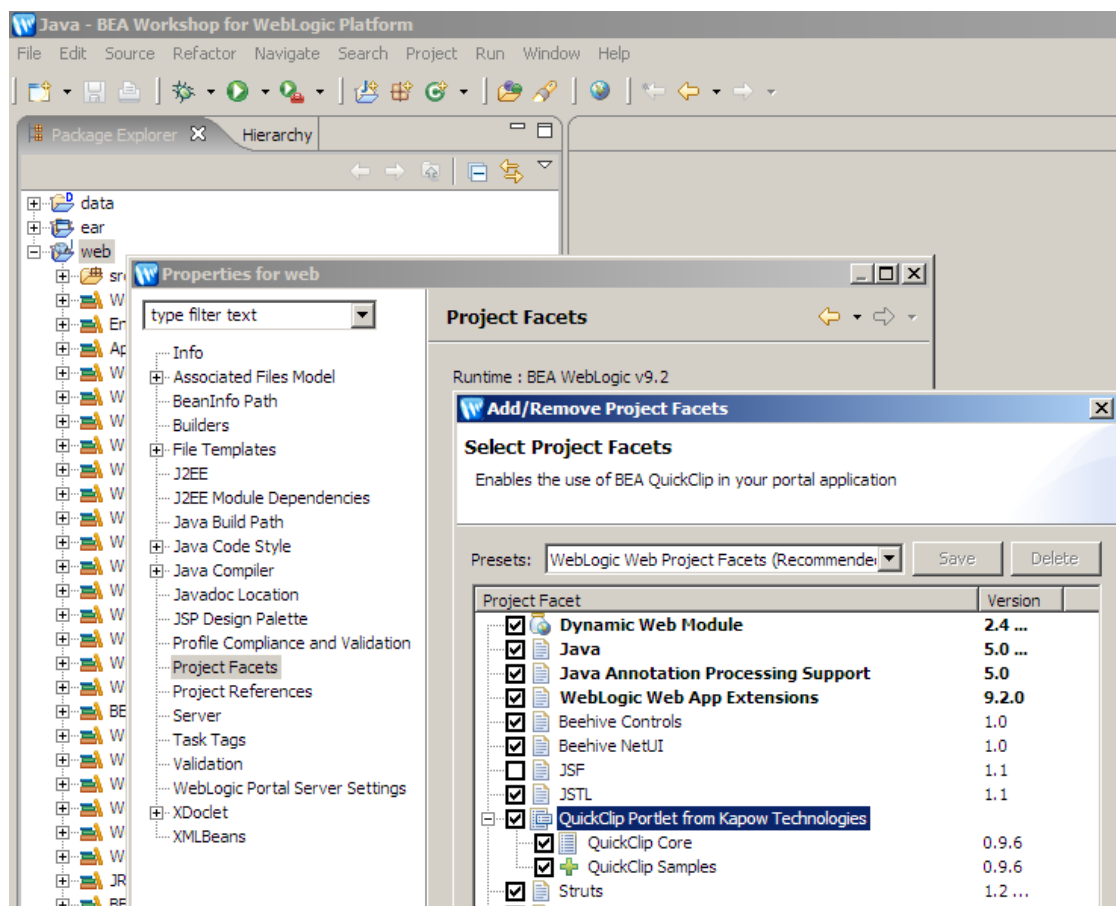
Adding QuickClip to your Portal Project

In order to use the QuickClip Portlet in an existing Portal Project you need to add the QuickClip facet to your project. In order to use the QuickClip Portlet in a new project, you should just create a new portal project and then follow the procedure described below.

To install the QuickClip Portlet in a Portal Project right click on the project in the Package Explorer and select **Properties > Project facets > Add/Remove Project Facets**. On the list of available facets you should select the QuickClip Portlet.

You can choose to install only the QuickClip Core facet, which will install all the necessary files for you to be able to add a QuickClip portlet to your portals in the given project. Or you can choose to also install the QuickClip Sample facet, that will install a sample portal with a number of different QuickClip portlets.

Figure 1: Adding the QuickClip Portlet facet to a Portal Project



The installation will create a folder called `quickclip` in the root folder of your portal project. This folder will contain most of the files necessary to run the portlet. But since the QuickClip portlet is a Java Portlet, its implementation also contains some Java code (classes) which will be installed in the `lib` folder of the portal's web project, that is in `WEB-INF/lib`. Note that the files will physically be placed here, but Workshop will not show these in the Package Explorer, but under Web App Libraries.

Adding QuickClip to your Portal Project

If you have chosen to install the QuickClip Samples you will also have a folder inside the quickclip folder containing a sample portal and some portlets.

Files Installed under the WEB-INF Folder

The files placed under the WEB-INF folder of the portal projects web project are:

- quickclip.jar – The implementation of the Java portlet.
- robosuite-clip.jar – The code needed to run RoboSuite Clipping. This is used by the code in quickclip.jar.
- robosuite-api.jar – The Java API for RoboSuite which is used by the code in robosuite-clip.jar to access the RoboSuite Server.

Besides these, files the the installation will also update the web.xml file. If you project already have a portlet.xml file the portlet definitions will be added to this and if not, one will be created for you.

Files Installed in the quickclip Folder

The files installed in the quickclip folder consists of

- JSP files – These files are part of the GUI of the portlets edit and help modes. There are also some JSP files for handling error situations. These files should not be change since this may result in the QuickClip not working correctly.
- A clip configuration file called quickclip.clip. This file is an XML-file and configures the web clipping functionality, for example, how to contact the server side component.
- Images files – These are some images used by the JSP files in the images folder in quickclip.
- Samples files (only if you have installed the sample facet) – These are some sample portlets that demonstrate various ways to configure the QuickClip Portlet. These are found in the samples folder under the quickclip folder.

Removing QuickClip from a Portal Project

If you should want to remove the QuickClip from your Project it is possible to do so.

To remove QuickClip Portlet files from a Portal Project right click on the project in the Package Explorer and select **Properties > Project facets > Add/Remove Project Facets** . On the list of available facets you should unselect the QuickClip Portlet.

This will remove all QuickClip files that have not been modified after the install. Additionally your `web.xml` and `portlet.xml` will be cleaned up for entries created by the installer.