



# **AquaLogic BPM Process API**

## **Developer Guide**

**Version: 6.0**

# Contents

<b>ALBPM Process API (PAPI).....</b>	<b>3</b>
ALBPM Process API (PAPI).....	3
What is PAPI?.....	3
Process API Usage Scenarios.....	3
Process API Architecture Overview.....	4
Structure of a Java PAPI Application.....	5
Writing Your First Java PAPI Program.....	6
Compiling a Java PAPI Program.....	10
Running a Java PAPI Program.....	11
<b>ALBPM PAPI Web Service.....</b>	<b>13</b>
What is PAPI Web Service?.....	13
What's New in PAPI Web Service 2.0?.....	13
PAPI Web Service Usage Scenarios.....	14
PAPI Web Service Architecture Overview.....	14
Enabling PAPI Web Service.....	14
Enabling PAPI Web Service in ALBPM Studio.....	14
Enabling PAPI Web Service in ALBPM Enterprise.....	15
Installing PAPI Web Service on a J2EE Application Server.....	15
PAPI Web Service Configuration.....	16
PAPI Web Service Configuration Console.....	16
Editing PAPI Web Service Configuration.....	17
Configuring PAPI Web Service Log.....	18
PAPI Web Service Security Authentication.....	18
Configuring Single Sign On Authentication.....	19
Configuring Username Token Profile.....	19
Configuring HTTP Basic Authentication.....	20
Configuring PRESET Authentication.....	21
PAPI Web Service Examples.....	21
Java JAX WS Client Example.....	21
JAX-WS Client Main -Class.....	22
Running Java JAX WS Client Example.....	26
PAPI Web Service .NET Client Example.....	27
.NET Client Main-Class.....	27

# ALBPM Process API (PAPI)

---

This guide is an introduction to ALBPM Process API (PAPI). It contains relevant information about the API architecture, an analysis of the structure of a Java application using PAPI, and instructions on how to compile and run a Java PAPI application.

## ALBPM Process API (PAPI)

This guide is an introduction to ALBPM Process API (PAPI). It contains relevant information about the API architecture, an analysis of the structure of a Java application using PAPI, and instructions on how to compile and run a Java PAPI application.

## What is PAPI?

PAPI is a Java client-server API that allows you to interact with processes deployed on an ALBPM Process Execution Engine.

PAPI is a Java API a Java API that can be invoked by any Java application written in Java 1.5.

PAPI provides the following operations:

- Create, send and abort process instances
- Select and unselect process instances
- Reassign process instances
- Audit an instance
- Suspend and resume process instances
- Grab and un-grab process instances
- Run intactive and global interactive activities
- Run external tasks
- Send notifications
- Get a list of process instances
- Get a list of deployed processes
- List the activities in a deployed process
- Get the latest version of a deployed process
- Manage views and presentations
- Manage attachments

ALBPM WorkSpace is built on PAPI. All the communication between the WorkSpace and the Process Engine is done through PAPI.

The complete reference documentation for PAPI is available at  
[http://edocs.bea.com/albsi/docs60/papi\\_javadocs/index.html](http://edocs.bea.com/albsi/docs60/papi_javadocs/index.html)

## Process API Usage Scenarios

PAPI provides a way for external applications to interact with ALBPM.

You should use PAPI to interact with external or legacy applications. Some common usage scenarios are:

- A web application that needs to create a process instance in ALBPM with the information entered by the user
- An external application whose execution final result is the execution of an ALBPM process
- An external application that need to perform a search, or to list information about processes in ALBPM
- An external application that needs to trigger the execution of an activity
- Batch or automatic processing of process instances

Although you can use PAPI to replace ALBPM WorkSpace with a similar graphical application interface, consider customizing ALBPM WorkSpace to suit your needs instead. Replacing ALBPM WorkSpace causes you to lose-and then to have to rebuild-most of the out-of-the-box functionality WorkSpace provides including, for example, both the authentication framework and the interactive execution framework.

## Process API Architecture Overview

PAPI is a Java API that allows you to build a client to connect to the engine and perform operations on the deployed processes.

When PAPI is initialized, the connected user is authenticated against the data in the directory service. Once authenticated, the Java client using PAPI can interact with any of the engines configured in the directory service.

PAPI must connect to a Process Execution Engine only to search for or operate on process instances and deployed processes. It does not need to connect to an Engine if a request or operation requires only data stored in the Directory Service.

The following operations do not require a connection to the engine:

- List available views
- Search for a specific view
- List available presentations
- List participants in the organization

You can successfully execute these operations even when the Process Engine is down.

PAPI can connect to one or more engines at a time, provided they are configured in the same directory service. When a client makes a request, PAPI automatically routes this request to the corresponding engine.

The following diagram shows interaction between a PAPI client, the Directory Service and the Process Engine in runtime. The diagram shows a custom Java client and ALBPM Workspace that is also a PAPI client.

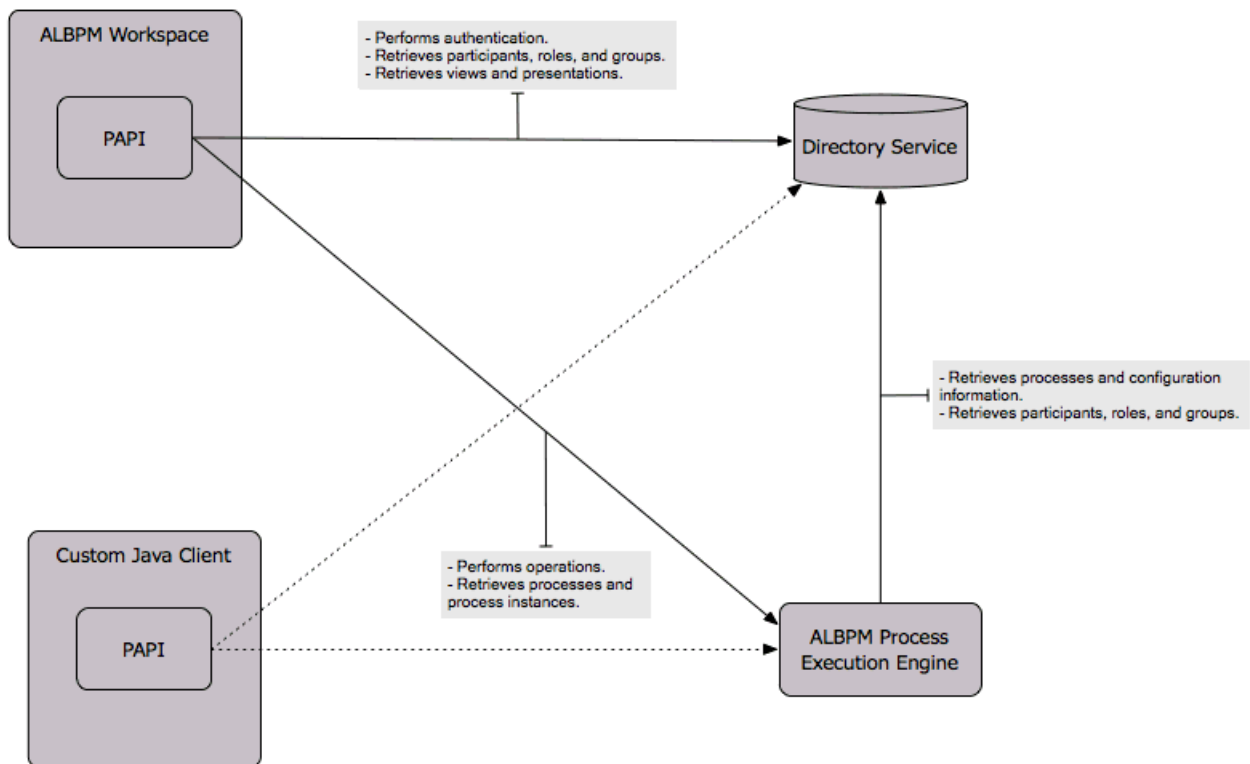


Figure 1: PAPI Components Runtime Diagram

## Structure of a Java PAPI Application

A Java PAPI application should follow a certain structure. The different methods that you need to invoke before and after performing operations with PAPI determine this structure.

A Java application that uses PAPI goes through the following stages:

1. Initialize the API.
2. Establish a session.
3. Operate with PAPI.
4. Close the session.
5. Release API resources.

### Initialize the API

The `ProcessService` class is the main entry point to the API. Before you start using PAPI, you must create a `ProcessService` object.

A `ProcessService` acts as a factory for `ProcessServiceSession` objects. To create a session, you must first create and configure a `ProcessService`.

When you create a `ProcessService` object, a connection to the Directory Service is established. This connection is used to load ALBPM's environment configuration information and later to authenticate the user creating the process service session.

## Establish a Session

A `ProcessServiceSession` represents the dialog between a participant and the Directory Service or one or more engines.

You need a `ProcessServiceSession` to manage and obtain information about process instances, participants, views, and presentations.

To create a `ProcessServiceSession` you need to provide the valid credentials--for example, the user identifier and password--of a participant that exists in the Directory Service.

## Operate with PAPI

Once you obtain a `ProcessServiceSession` you are ready to query for information and invoke any of the operations provided by PAPI.

## Close the Session

You need to close PAPI sessions before your application finishes so that caches are cleared and the connections to the engine are closed.

Leaving sessions open may both cause a memory leak and use network resources unnecessarily. This is because the allocated resources are never freed and the Engine continues to send information to the connected participant.

Leaving sessions open can also cause problems in updating a participant's role assignment. Because changes to role assignments are applied only after the last session has been closed, leaving a session open indefinitely means that changes to roles and permissions are never applied.

PAPI sessions do not expire by timing out. The application using PAPI is responsible for closing open sessions.

Once the session is closed it cannot be used again. Trying to invoke a method over a closed session results in an exception.

## Release API resources

It is advisable to close the `ProcessService` so that the resources it uses are released.

When a `ProcessService` is closed, the following events occur:

- All opened PAPI sessions are closed.
- Temporary files used by the API are deleted.
- The connection to the Directory Service is closed.
- Caches used by PAPI are cleared.

# Writing Your First Java PAPI Program

This section shows you how to build a Java PAPI Client that retrieves a list of process instances visible to the connected user.

## Programming a Java PAPI Client

The typical steps you have to follow when building a Java PAPI Client are:

- Import the required libraries.
- Create a process service.
- Create a process service session.
- Perform operations with PAPI.
- Close the process service.

## Import the Required Libraries

You need to import PAPI classes to be able to use them in your code. The following code imports the PAPI classes needed for this example.

```
import fuego.papi.CommunicationException;
import fuego.papi.InstanceInfo;
import fuego.papi.ProcessService;
import fuego.papi.ProcessServiceSession;
import fuego.papi.OperationException;
```

## Create a Process Service

In order to create a [ProcessService](#) you need a [java.util.Properties](#) object containing its configuration. You can create this property object and build it within your Java code, or you can load it from a properties file. This example adds the properties within the code for practical reasons.

The two mandatory properties you need to specify are the directory id and the path to the `directory.xml` file.

```
Properties configuration = new Properties();
properties.setProperty(ProcessService.DIRECTORY_ID, "default");
properties.setProperty(ProcessService.DIRECTORY_PROPERTIES_FILE, "directory.xml");
```

To create a [ProcessService](#) object you need to invoke the factory method [ProcessService.create\(\)](#) from the class `ProcessService` passing it the `Property` object as an argument.

If there is a problem locating the Directory Service, this method throws a [CommunicationException](#), so you need to call it inside a try-catch block.

```
try {
    ProcessService processService = ProcessService.create(configuration);
    //...
} catch (CommunicationException e) {
    System.out.println("Could not connect to Directory Service");
    e.printStackTrace();
}
```

## Create a Process Service Session

To create a [ProcessServiceSession](#) you must invoke the factory method [createSession](#) over the `ProcessService` object you've just created. This methods requires three String arguments:

- user: an existing participant in the Directory Service.
- password: the participant's password.
- host: the host from which the connection is established. This is an optional argument, it is used for monitoring purposes, so if this information is not available this argument's value can be null.

If there is a problem authenticating the specified participant, this method throws an [OperationException](#), so you need to invoke it inside a try-catch block.

```
try {
    //...
    ProcessServiceSession session = processService.createSession("user", "password",
"host");
    //...
} catch (OperationException e) {
    System.out.println("Could not perform the requested operation");
    e.printStackTrace();
}
```

```
}
```

## Perform Operations with PAPI

The following code retrieves a list of available processes by invoking the method `processesGetIds()` over a `ProcessServiceSession` object.

It then iterates over them using those ids to obtain the process instances for each process by invoking the method `processGetInstances()` over the session object. If there is a problem performing any of the requested operations, this method throws an `OperationException`, so you need to invoke it inside a try-catch block.

Finally it iterates over those instances invoking the method `getId()` and prints its result.

```
try {
    //...
    System.out.println("Show Instances by process:");
    for (String processId : session.processesGetIds()) {
        System.out.println("\n Process: " + processId);
        for (InstanceInfo instance : session.processGetInstances(processId)) {
            System.out.println(" -> " + instance.getId());
        }
    }
} catch (OperationException e) {
    System.out.println("Could not perform the requested operation");
    e.printStackTrace();
}
```

## Close the Process Service Session

To close the session, invoke the method `close()` over the `ProcessServiceSession` object.

```
session.close();
```

Closing a session releases all the resources this session is using. After calling the method `close()`, the session can no longer be used. If you try to invoke a method on a closed session, its execution fails and a `SessionClosedException` is thrown.

## Close the Process Service

To close the `ProcessService` object, invoke the method `close()` over the `ProcessService` object.

```
processService.close();
```

This releases all the resources used by PAPI, clears the caches, deletes the temporary files, and closes the connections to the Process Engine and the Directory Service.

## Complete Code Example

The following class contains all the steps described in this section.

```
package papidoc.examples;

import fuego.papi.CommunicationException;
import fuego.papi.InstanceInfo;
import fuego.papi.ProcessService;
import fuego.papi.ProcessServiceSession;
import fuego.papi.OperationException;
import java.util.Properties;
```



```

public class PapiExample {

    public static void main(String[] args) {

        //////////////// API Initialization ///////////////////
        Properties configuration = new Properties();
        configuration.setProperty(ProcessService.DIRECTORY_ID, "default");
        configuration.setProperty(ProcessService.DIRECTORY_PROPERTIES_FILE,
"directory.xml");
        configuration.setProperty(ProcessService.WORKING_FOLDER, "/tmp");

        try {
            ProcessService processService = ProcessService.create(configuration);

            //////////////// Establish a session ///////////////////
            ProcessServiceSession session = processService.createSession("test", "test",
"host");

            //////////////// Operate with PAPI ///////////////////
            for (String processId : session.processesGetIds()) {
                System.out.println("\n Process: " + processId);
                for (InstanceInfo instance : session.processGetInstances(processId)) {
                    System.out.println(" -> " + instance.getId());
                }
            }

            //////////////// Close the session ///////////////////
            session.close();

            //////////////// Release API Resources ///////////////////
            processService.close();
        } catch (CommunicationException e) {
            System.out.println("Could not connect to Directory Service");
            e.printStackTrace();
        } catch (OperationException e) {
            System.out.println("Could not perform the requested operation");
            e.printStackTrace();
        }
    }
}

```

The following sequence diagram shows the interaction between the classes used in the example.

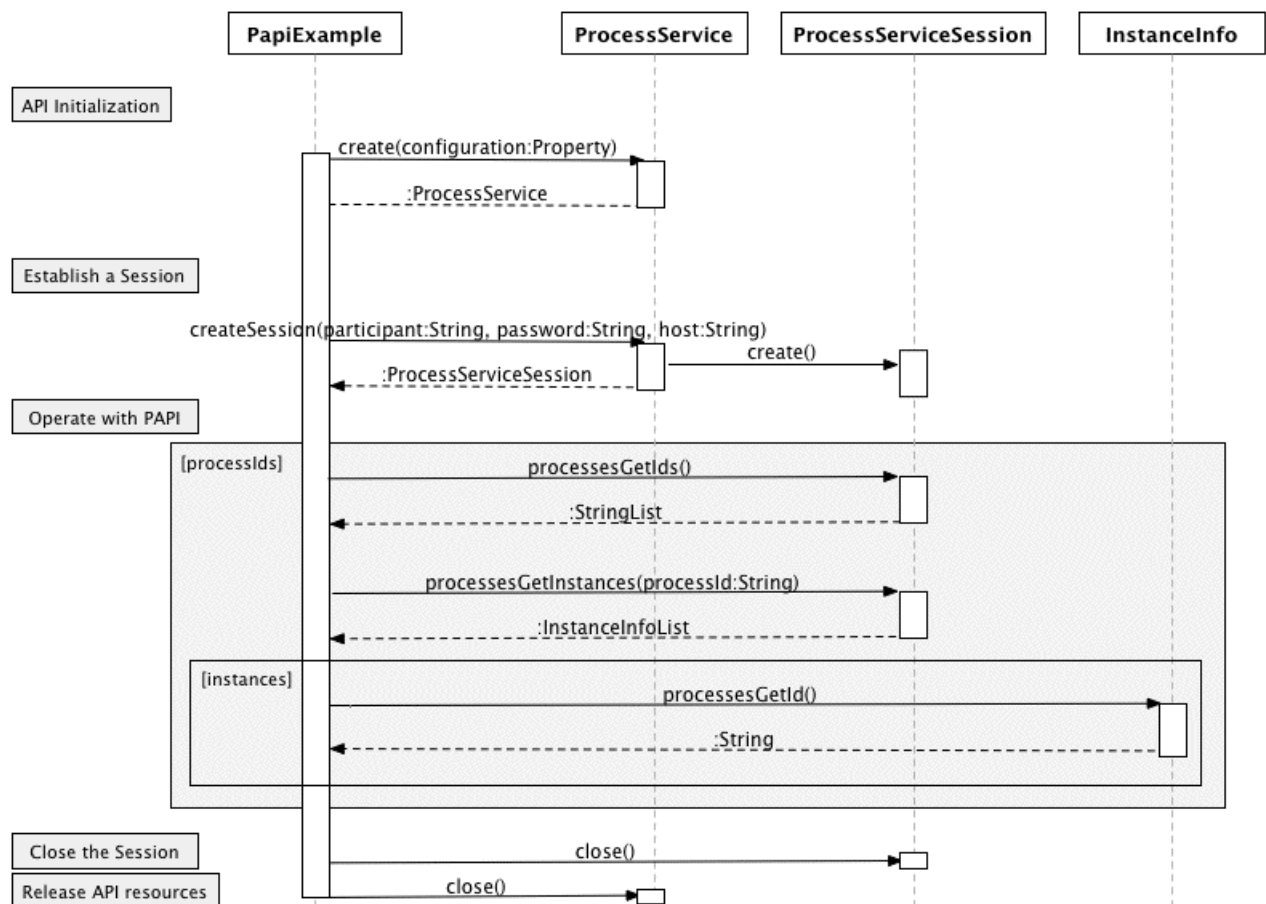


Figure 2: PAPI Client Example Sequence Diagram

## Compiling a Java PAPI Program

The following procedures show you how to compile from the command line a Java class that uses PAPI.

To compile a Java PAPI program from the command line you need to have a Java SE Development Kit 5 (JDK 5) installed. You can download the JDK from [Sun Developer Network](#). You may also use the JDK bundled with some installations of ALBPM Enterprise, which gets installed under `BEA_HOME/albpm6.0/enterprise/jre/`.

PAPI classes are contained in the `fuegopapi-client.jar` JAR file, which is distributed with ALBPM Enterprise under `BEA_HOME/albpm6.0/enterprise/client/papi/lib/fuegopapi-client.jar`.

1. Open a command-line session.
2. Add the PAPI library to the classpath by setting the environment variable `CLASSPATH`. The way of doing this depends on your operating system.

- Linux:

```
$export CLASSPATH="/bea/albpm6.0/enterprise/client/papi/lib/fuegopapi-client.jar"
```

- Windows:

```
C:>set CLASSPATH="C:/bea/albpm6.0/enterprise/client/papi/lib/fuegopapi-client.jar"
```

3. Compile the Java PAPI program using javac (Java Compiler) provided by the JDK:

```
javac MyFirstPapiApplication.java
```

These two steps can be merged into one by using the -classpath option when calling the java compiler:

```
javac -classpath "C:/bea/albpm6.0/enterprise/client/papi/lib/fuegopapi-client.jar"
MyFirstPAPIApplication.java
```

A file with the extension .class is generated in the directory where you compiled your program.

## Running a Java PAPI Program

The following procedures show you how to run from the command line a Java program that uses PAPI.

To run a Java PAPI program you need to have a Java SE Development Kit 5 (JDK 5) installed. You can download the JDK from [Sun Developer Network](#). You may also use the JDK bundled with some installations of ALBPM Enterprise, which gets installed under BEA\_HOME/albpm6.0/enterprise/jre/.

PAPI classes are contained in the fuegopapi-client.jar JAR file, which is distributed with ALBPM Enterprise under BEA\_HOME/albpm6.0/enterprise/client/papi/lib/fuegopapi-client.jar.

1. Open a command-line session.
2. If you are not running the program from the same command-line session where you have compiled it, you need to add the PAPI library to the Java classpath by setting the environment variable CLASSPATH. The way of doing this depends on your operating system.

- Linux:

```
$export CLASSPATH="/bea/albpm6.0/enterprise/client/papi/lib/fuegopapi-client.jar"
```

- Windows:

```
C:>set CLASSPATH="C:/bea/albpm6.0/enterprise/client/papi/lib/fuegopapi-client.jar"
```

3. Copy the file directory.xml to the location specified in your properties file or in your PAPI program. The file directory.xml resides in the directory albpm6.0/enterprise/conf. In the analyzed example the directory.xml file was copied to the directory from where the example is run. This location is specified in the following lines of code:

```
Properties configuration = new Properties();
//...
configuration.setProperty(ProcessService.DIRECTORY_PROPERTIES_FILE, "directory.xml");
```

4. Run your PAPI program using the java command provided by the JDK:

```
java MyFirstPapiApplication
```

This step and step one can be merged into one by using the -classpath option when calling the java command:

```
java -classpath "C:/bea/albpm6.0/enterprise/client/papi/lib/fuegopapi-client.jar"
MyFirstPAPIApplication
```

When you run the program you see a list of the deployed processes and their instances. The following lines illustrate the generated output when executing this program connecting to an engine that has three instances sitting on the deployed process "Process":

```
Process: /Process#Default-1.0  
-> /Process#Default-1.0/1/0  
-> /Process#Default-1.0/3/0  
-> /Process#Default-1.0/2/0
```

# ALBPM PAPI Web Service

This guide contains relevant information about PAPI Web Service architecture, an analysis of the structure of PAPI Web Service clients written in different languages, and procedures that show you how to modify PAPI Web Service configuration.

## What is PAPI Web Service?

PAPI Web Service is an independent web application built on top of PAPI. This application exposes a subset of PAPI functionality using SOAP over HTTP.

Using PAPI Web Service to communicate with the Engine has the following advantages over using PAPI:

- You can use it from any programming language that supports XML and HTTP.
- It does not need any external libraries on the client side.
- The application using PAPI Web Service does not need a connection to the Directory Server. This application can run outside the domain where ALBPM is installed.

There are a few minor disadvantages:

- Performance overhead: PAPI Web Service is a layer on top of PAPI. The web services client communicates with PAPI using XML. This adds a small overhead that makes PAPI Web Service slightly less performant than using PAPI directly.
- Attachments functionality is not available.
- PAPI Web Service does not handle complex types. Only methods with primitive and/or catalogued XML schema type arguments, and primitive return type can be invoked.

## What's New in PAPI Web Service 2.0?

PAPI Web Service was completely rewritten based on the feedback obtained from its previous version. This section describes the features supported by PAPI Web Service 2.0.

The following table shows the difference between PAPI Web Service 2.0 and PAPI Web Service 1.0:

PAPI Web Service 2.0	PAPI Web Service 1.0
Independent web application.	Bundled with ALBPM Workspace.
You can modify its default configuration.	Supports only the default configuration.
Document/literal wrapped style WSDL SOAP binding.	RPC/encoded style WSDL SOAP binding.
Supports WS Security Username Token Profile 1.1, HTTP Basic and Single Sign On (SSO) authentication mechanisms.	Does not support any standard authentication mechanisms. You need to send a session ID every time you invoke an operation.
Method arguments support catalogued schema type objects in addition to primitive types.	Method arguments only support primitive types.
The signature of the exposed methods matches the signature of their equivalent methods in PAPI.	Its semantics are completely different from PAPI's semantics.



**Note:** PAPI Web Service 1.0 is deprecated. If you still need to use it in ALBPM 6.0 you have to enable and start ALBPM Classic Workspace.

## PAPI Web Service Usage Scenarios

PAPI Web Service provides access to a considerable subset of PAPI operations. This section describes the scenarios where PAPI Web Service is more suitable than PAPI.

PAPI Web Service complies with Web Services standards. This allows you to take advantage of the existing common infrastructure used by other applications such as load balancers, proxies, security services and monitoring. PAPI Web Service fits perfectly into a SOA architecture.

Use PAPI Web Service to expose PAPI operations to:

- external applications written in virtually any programming language.
- applications running outside the domain where ALBPM resides.
- applications running behind a fire wall.

## PAPI Web Service Architecture Overview

PAPI Web Service is a web service application that exposes a considerable set of PAPI operations.

PAPI Web Service is an independent web application that runs on top of PAPI. PAPI Web Service provides a WSDL (Web Services Definition Language) descriptor that defines the operations the client can invoke and the complex types these operations may use. The client application connected to PAPI Web Service, uses SOAP (Simple Object Access Protocol) over HTTP to invoke any of the functions listed in the WSDL.

PAPI Web Service relies on PAPI to obtain the information the client requests. Then it translates this information into XML and uses SOAP to send it back to the client.

PAPI Web Service implementation is based on the following:

- JAX-WS 2.0 web service
- WS-I 1.1 compliant
- Document/literal wrapped style WSDL SOAP binding

The following diagram shows the interaction between PAPI Web Service components during runtime.



**Figure 3: PAPI Web Service Runtime Architecture**

## Enabling PAPI Web Service

PAPI Web Service is not enabled by default. This section shows the how to enable PAPI Web Service for each of the possible environment and configurations. These procedures depend on the type and configuration of ALBPM installation.

### Enabling PAPI Web Service in ALBPM Studio

The following procedures show you how to enable PAPI Web Service in Studio.

By default PAPI Web Service application is not enabled. To enable PAPI Web Service in Studio:

1. Right-click on the project.
2. Select **Engine Preferences**.
3. Select **Advanced**.
4. Check **Start PAPI Web Services**.

The next time you start the engine PAPI Web Service application is started. To verify this launch PAPI Web Service Console.

See [Launching PAPI Web Service Console in ALBPM Studio](#) on page 17

## Enabling PAPI Web Service in ALBPM Enterprise

The following procedures show you how to enable PAPI Web Service in ALBPM Enterprise.

To enable PAPI Web Service:

1. Edit ALBPM Admin Center configuration.
2. Select **BPM Web Applications** tab.
3. Select **PAPI Web Services** checkbox in the list of BPM web applications to run.  
The next time you start BPM Web Applications, PAPI Web Service is started.

The next time you start the engine PAPI Web Service application is started. To verify this launch PAPI Web Service Console.

See [Launching PAPI Web Service Console in ALBPM Enterprise](#) on page 17.

## Installing PAPI Web Service on a J2EE Application Server

To install PAPI Web Service when the Process Execution Engine is running on a J2EE application server, you have to follow the procedures that describe how to install an ALBPM web application on that specific server. This section shows the procedures for WebLogic Application Server and WebSphere Application Server.

### Installing PAPI Web Service on WebLogic Server

The following procedures show you how to install PAPI Web Service on WebLogic Server

To install PAPI Web Service on WebLogic Server:

1. Build PAPI Web Service Application.  
For information on how to build a web application on WebLogic Server, see [Build and Deploy Applications \(.ear\)](#) on page 15.  
This generates two ear files, that correspond to the two supported versions of WebLogic.
2. Choose the ear file that corresponds to the version of the WebLogic Server you are using.

The following table shows the correspondence between the version of WebLogic Server and the generated ear file.

WebLogic Server Version	ear File
WebLogic Server 10	07-papiws-XAFDIDS.ear
WebLogic Server 9.2	07-papiws-wls92-XAFDIDS.ear

3. Deploy PAPI Web Service Application.  
For information on how to deploy a web application on WebLogic Server, see [Build and Deploy Applications \(.ear\)](#) on page 15.

### Build and Deploy Applications (.ear)

The ALBPM Process Administrator allows you to bundle the ALBPM applications as .ear files for installation on WebLogic.

Before creating the ALBPM application archives, you must have an ALBPM Engine for WebLogic configured.



1. Login to ALBPM Process Administrator. By default, it runs on <http://host:8686/webconsole>.
2. Click on **Engines** and then click on the name of your ALBPM Engine for WebLogic.  
You should see the configuration properties for your Engine.

3. Click on the **Basic Configuration** tab and then on **J2EE Application Server Files**.

This page allows you to (re)create the .ear files of those ALBPM applications associated with this Engine.



**Note:** When you access this page, the Process Administrator gets the status of each of the applications by contacting ALBPM Deployer. You will get a warning message at the bottom of the page if there was any problem contacting ALBPM Deployer. If this is the case, make sure the **BPM Application Deployer URL** (within the **Application Server** tab) is correct and that ALBPM Deployer is up and running on WebLogic.

4. Click on the "new" icon () next to each of the applications you want to install.
5. Click on the "install" icon () next to each of the applications you want to install.



**Attention:** This may take several minutes. Do not click any link on the page and do **back** in your browser until the page is automatically reloaded. When you click on the icon, ALBPM Process Administrator transfers the file over to WebLogic's Deployment Manager (by means of ALBPM Deployer) and then WebLogic goes through the application installation process.

### Installing PAPI Web Service on WebSphere Application Server

The following procedures show you how to install PAPI Web Service on WebSphere Application Server.

To install PAPI Web Service on WebSphere Application Server:

1. Build and deploy PAPI Web Service application.  
For information on how to build and deploy ALBPM applications on WebSphere Application Server, see ["WAS Basic Configuration, Deploy ALBPM Apps in WebSphere" in ALBPM Configuration Guide, WebSphere Edition](#) .
2. Open WebSphere Console.
3. Choose **Applications ► Enterprise Applications**.
4. Click **07-papiws-FDIDS.ear** link.
5. Select **Class loading and update detection**.
6. Select **Classes loaded with application class loader first**.
7. Select **Single class loader for application**.
8. Click **OK**.

If you do not enter a value in the field labeled **Polling interval for updated files** an error message appears.

A message asking you to confirm your changes appears.

9. Click **Save**.
10. Restart the server.

The next time you start the server PAPI Web Service application starts. To verify this launch PAPI Web Service Console.

## PAPI Web Service Configuration

You can configure PAPI Web Service by modifying a set of properties either by using the provided user interface or by editing the file where these properties are stored. This section shows you how to modify PAPI Web Service configuration in ALBPM Studio and Enterprise.

### PAPI Web Service Configuration Console

PAPI Web Service provides a console where you can view its configuration properties and other useful information such as the endpoint and the WSDL URLs.

PAPI Web Service console is available in ALBPM Enterprise and Studio. In the you can edit the information it shows to change PAPI Web Service configuration.



The following list shows the information displayed in PAPI Web Service console:

- **Style:** the format that the WSDL defines for the SOAP messages sent between the web service and the client. PAPI Web Service uses document/literal wrapped format. You cannot change this style.
- **SSO:** shows if Single Sign On authentication is enabled.
- **WS-Security Username Token Profile Authentication:** shows if Username Token Profile authentication is enabled.
- **HTTP Basic Authentication:** shows if HTTP Basic authentication is enabled.
- **PRESET Authentication:** shows if PRESET authentication is enabled. This type of authentication is valid only for ALBPM Enterprise. In ALBPM Studio the value of this property is always false, and it cannot be changed.
- **Endpoint:** shows the URL of PAPI Web Service endpoint.
- **WSDL:** shows the URL where PAPI Web Service WSDL is published. Most web services stacks include a tool to automatically generate stubs based on a WSDL. You need to provide this tool with the WSDL URL displayed here.

### Launching PAPI Web Service Console in ALBPM Studio

The following procedure shows you how to launch PAPI Web Service console in ALBPM Studio.

To launch PAPI Web Service console:

1. Enable PAPI Web Service in an already existing project.  
See [Enabling PAPI Web Service in ALBPM Studio](#) on page 14.
2. Start the Process Engine.
3. Choose **Run ► Launch PAPI Web Services**.

The default browser opens showing ALBPM Web Service console.

### Launching PAPI Web Service Console in ALBPM Enterprise

The following procedure shows you how to launch PAPI Web Service console in ALBPM Enterprise.

1. Start ALBPM Admin Center.
2. Enable PAPI Web Service.  
See [Enabling PAPI Web Service in ALBPM Enterprise](#) on page 15
3. Click **Start BPM Web Applications**.
4. Click **Launch PAPI Web Services Console**.

The default browser opens showing ALBPM Web Service console.

## Editing PAPI Web Service Configuration

This section shows you how to change PAPI Web Service configuration in Studio and in Enterprise.

The way of editing PAPI Web Service configuration varies between both types of installation.

In an Enterprise installation PAPI Web Service's configuration is stored in the `papiws.properties` file, located under `BEA_HOME/albpm6.0/enterprise/webapps/papiws/WEB-INF`. This file contains additional advanced properties that you can use to tune PAPI Web Service performance. Each property has a comment that describes their function.

### Editing PAPI Web Service Configuration in Studio

The following procedures show how to edit PAPI Web Service configuration in Studio.

To edit PAPI Web Service configuration:

1. Launch PAPI Web Service console  
See [Launching PAPI Web Service Console in ALBPM Studio](#) on page 17
2. Click **Change configuration**.  
The displayed properties become editable and a **Save changes** button appears next to the **Change configuration** button.

3. Modify the values of the properties you need to change.
4. Click **Save changes**.  
A message informing changes were successfully applied appears.
5. Restart the engine to apply changes.

Launch PAPI Web Service console to verify your changes were applied.

### Editing PAPI Web Service Configuration in ALBPM Enterprise

The following procedures show you how to edit PAPI Web Service configuration in an ALBPM Enterprise.

To edit PAPI Web Service configuration:

1. Start ALBPM Admin Center.
2. Modify the values of the properties you need to change.
3. Click **OK**.
4. Click **Start BPM Web Applications** to apply the changes.

Click **Launch PAPI Web Services Console** to verify your changes were applied.

## Configuring PAPI Web Service Log

PAPI Web Service keeps a log of the performed operations that can be used for troubleshooting. The following procedures show you how to configure the directory where log files are stored, and the severity to filter the logged messages.

To enable the log for PAPI Web Service application:

1. Start ALBPM Admin Center.
2. Click **Configuration**.
3. Select **PAPI Web Services** tab.
4. Enter the complete path of the directory where you want to save PAPI Web Service logs in the **Log Folder** field, or click **Browse...** and select the directory.
5. Select a severity level from the **Log Message Severity Level** drop-down list.

The available severity levels are:

- Debug
- Info
- Warning
- Severe
- Fatal

The next time you start PAPI Web Service the changes made to the log configuration are applied.

## PAPI Web Service Security Authentication

This section describes the different types of authentication mechanisms that PAPI Web Service supports.

PAPI Web Service supports the following types of authentication:

- Custom Single Sign On (SSO) authentication
- UsernameToken Profile 1.1 (Plain-text)
- HTTP Basic authentication
- PRESET authentication

You can independently enable or disable any of these authentication mechanisms.



**Note:** By default Username Token Profile authentication is selected. You must select at least one authentication method to provide PAPI Web Service the necessary information to authenticate against the engine.

When PAPI Web Service starts running it activates the authentication providers that correspond to the enabled authentication mechanisms.

Every time a client makes a request to PAPI Web Service, this request goes through an authentication phase before reaching the service endpoint. During this phase the activated authentication providers will be called in the order they appear in the preceding list. When one of these providers successfully authenticates the request the application grants access to the web service. If all the activated providers reject access, the request is rejected.

## Configuring Single Sign On Authentication

Papi Web Service can use a custom Single Sign On (SSO) implementation to authenticate the client. These following procedures show you how to configure SSO Authentication for PAPI Web Service.

To compile the class containing your custom SSO implementation you need to have a Java SE Development Kit 5 (JDK 5) installed. You can download the JDK from [Sun Developer Network](#).

To configure SSO Authentication for PAPI Web Service:

1. Implement the interface `fuego.sso.SSOUserLoginInterface`.
  - a) Add the file `fuego.core.jar` to the CLASSPATH.
    - In a Studio installation this file resides in `BEA_HOME/albpm6.0/studio/lib`
    - In an Enterprise installation this file resides in `BEA_HOME/albpm6.0/enterprise/webapps/papiws/WEB-INF/lib`
  - b) Create a Java class that implements the interface `fuego.sso.SSOUserLoginInterface`.  
This class should contain your custom SSO implementation.
  - c) Compile the class created in the previous step.
2. Copy the compiled class that contains your SSO implementation to the `WEB-INF/lib` directory of the PAPI Web Service web application.
  - In a Studio installation this directory is located under: `BEA_HOME/albpm6.0/studio/webapps/papiws`
  - In an Enterprise installation this directory is located under: `BEA_HOME/albpm6.0/enterprise/webapps/papiws`
3. Edit PAPI Web Service configuration and select the SSO option.  
See [Editing PAPI Web Service Configuration](#) on page 17
4. Enter the fully qualified name of the class containing the SSO implementation.

The next time you start the PAPI Web Service application, SSO authentication is activated.

## Configuring Username Token Profile

PAPI Web Service can use Web Services Security Username Token Profile to authenticate the client. The following procedures show you how to configure Username Token Profile for PAPI Web Service.

To configure Username Token Profile authentication:

- Edit PAPI Web Service configuration and select the Username Token Profile authentication option.  
See [Editing PAPI Web Service Configuration](#) on page 17.  
The next time you start PAPI Web Service application, Username Token Profile authentication is activated.
- Configure your web services client to send the Username Token SOAP header when it authenticates against PAPI Web Service.

The way of doing this depends on the programming language and the stack used to code your client.

For example, for a client using Java JAX-WS stack you need to add the following method, and invoke it before executing any operation.

```
import javax.xml.soap.SOAPElement;
import javax.xml.soap.SOAPException;
import javax.xml.soap.SOAPFactory;
import com.sun.xml.ws.api.message.Header;
import com.sun.xml.ws.api.message.Headers;
import com.sun.xml.ws.developer.WSBindingProvider;

//...

    private static final String SECURITY_NAMESPACE =
"http://docs.oasis-open.org/wss/2004/01/oasis-200401-wss-wssecurity-secext-1.0.xsd";

//...

private static void addUserNameTokenProfile(PapiWebService papiWebServicePort)
    throws SOAPException {
    SOAPFactory soapFactory = SOAPFactory.newInstance();
    QName securityQName = new QName(SECURITY_NAMESPACE, "Security");
    SOAPElement security = soapFactory.createElement(securityQName);
    QName tokenQName = new QName(SECURITY_NAMESPACE, "UsernameToken");
    SOAPElement token = soapFactory.createElement(tokenQName);
    QName userQName = new QName(SECURITY_NAMESPACE, "Username");
    SOAPElement username = soapFactory.createElement(userQName);
    username.addTextNode("test");
    QName passwordQName = new QName(SECURITY_NAMESPACE, "Password");
    SOAPElement password = soapFactory.createElement(passwordQName);
    password.addTextNode("test");
    token.addChildElement(username);
    token.addChildElement(password);
    security.addChildElement(token);
    Header header = Headers.create(security);
    ((WSBindingProvider) papiWebServicePort).setOutboundHeaders(header);
}

//...
```

## Configuring HTTP Basic Authentication

PAPI Web Service can use HTTP Basic authentication to authenticate the client. The following procedures show you how to configure HTTP Basic authentication for PAPI Web Service.

To configure HTTP Basic authentication:

- Edit PAPI Web Service configuration and select the HTTP Basic authentication option.

See [Editing PAPI Web Service Configuration](#) on page 17

The next time you start PAPI Web Service application, HTTP Basic authentication is activated.

- Configure your web services client to use HTTP Basic authentication when it authenticates against PAPI Web Service.

The way of doing this depends on the programming language used to code your client.

For example, for a client using Java JAX-WS stack you need to add the following method, and invoke it before executing any operation.

```
import java.util.Map;
import javax.xml.ws.BindingProvider;

//...
```

```

    private static void addHttpBasicAuthentication(PapiWebService papiWebServicePort)
    {
        Map<String, Object> requestContext = ((BindingProvider)
papiWebServicePort).getRequestContext();
        requestContext.put(BindingProvider.USERNAME_PROPERTY, "test");
        requestContext.put(BindingProvider.PASSWORD_PROPERTY, "test");
    }
//...

```

## Configuring PRESET Authentication

A PRESET is a set of properties that you can define in a `directory.xml` file for different purposes. This mechanism of authentication is only available for Enterprise installations. The following procedures shows you how configure PRESET authentication for PAPI Web Service.

To configure PRESET authentication:

1. Use the ant task `managedirectory`, to add a PRESET with a valid user and password to the `directory.xml` file that corresponds to the PAPI Web Service web application.

The `directory.xml` file for PAPI Web Service web application is located under `BEA_HOME/albpm6.0/enterprise/webapps/papiws/WEB-INF`. This file is a copy of the xml file named after the Directory Configuration name located under `BEA_HOME/albpm6.0/enterprise/webapps/conf`.

See [managedirectory ant task](#).

2. Edit PAPI Web Service configuration and enter the PRESET name in the field labeled "Set PRESET ID for PRESET authentication".

See [Editing PAPI Web Service Configuration](#) on page 17

The next time you start the PAPI Web Service application, PRESET authentication is activated.

## PAPI Web Service Examples

You can develop a PAPI Web Service client in different programming languages. Some languages may even provide more than one stack to develop a web service client. This section shows examples of PAPI Web Service clients developed in different languages and stacks.

### Java JAX WS Client Example

This section shows you how to develop a Java client using the JAX WS stack. It uses the PAPI Web Service to retrieve a list of process instances visible to the connected user.

This example contains an analysis of the code of a PAPI Web Service client developed using JAX WS. The source code includes:

- A set of ant scripts to generate the stubs from the WSDL, compile the code and run it.
- A lib directory containing the external libraries needed to code and compile the JAX-WS client.

You can use this project as a basis to develop more complex examples. To do this you have to replace the class `PapiWsJaxWsExample` by the classes you develop, and change target run in the ant script so that it executes the new class.

A Java JAX-WS client contains two different type of classes:

- JAX-WS portable artifacts
- Client Java classes

## JAX-WS portable artifacts

The web service client code uses these artifacts to operate with PAPI Web Service. JAX-WS provides a tool called Wsimport to generate these classes based on the WSDL PAPI Web Service. When you run Wsimport using PAPI Web Service WSDL as an input argument it generates the following classes:

- Service Endpoint Interface
- Service
- Exception classes
- Java classes mapped from the schema types referenced in the WSDL

This example uses Wsimport ant task to generate this artifacts. For information about Wsimport, see <https://jax-ws.dev.java.net/nonav/2.1.2/docs/wsimport.html> .

## Client Java Classes

A PAPI Web Service client includes one or more Java classes that contain the code to invoke PAPI Web Service and operate with it. You have to code this classes yourself. The code in these classes uses JAX-WS portable artifacts to access the web service and to operate with it.

The client shown in this example contains only one class because it is a simple example. The code in this class performs the following actions:

- Invokes the web service.
- Authenticates using Username Token Profile and HTTP authentication.
- Uses JAX-WS portable artifacts to obtain the list of process instances.

For a detailed analyses of this class, see [JAX WS Client Main Class](#) .

## Download

You can download the set of java classes of this example from [http://edocs.bea.com/albsi/docs60/resources/papi\\_ws/ALBPM-PapiWs-JaxWs-Example.zip](http://edocs.bea.com/albsi/docs60/resources/papi_ws/ALBPM-PapiWs-JaxWs-Example.zip) . For information on how to run this example see [Running Java JAX WS Client Example](#) on page 26.

## JAX-WS Client Main -Class

This section analyzes the main-class of the JAX-WS client example step by step.

### Programming a JAX-WS Client

The typical steps you have to follow to use PAPI Web Service with JAX-WS stack are:

- Import the required libraries.
- Initialize the web service client.
- Configure authentication.
- Operate with PAPI Web Service.

### Import the Required Libraries

This example uses classes form `java.net`, `javax.xml` and `com.sun.xml.ws` packages. You have to import these classes to be able to use them in your code. The following code imports the classes from these packages that are used in this example.

```
import java.net.MalformedURLException;
import java.net.URL;
import java.util.Map;
import javax.xml.namespace.QName;
import javax.xml.soap.SOAPElement;
import javax.xml.soap.SOAPException;
import javax.xml.soap.SOAPFactory;
```

```
import javax.xml.ws.BindingProvider;
import javax.xml.ws.Service;
import com.sun.xml.ws.api.message.Header;
import com.sun.xml.ws.api.message.Headers;
import com.sun.xml.ws.developer.WSBindingProvider;
```

You also have to import the automatically generated JAX-WS portable artifacts. It is common to call these classes stubs.

```
import stubs.InstanceInfoBean;
import stubs.InstanceInfoBeanList;
import stubs.OperationException_Exception;
import stubs.PapiWebService;
import stubs.PapiWebService_Service;
import stubs.StringListBean;
```

### Initialize the Web Service Client

To invoke PAPI Web Service you have to create a `Service` object. The constructor of a service object receives an URL object that contains the URL of the WSDL. In this example the URL of the WSDL is passed as an argument to the main method.

```
public class PapiWsJaxWsExample {
    private static final String SECURITY_NAMESPACE =

"http://docs.oasis-open.org/wss/2004/01/oasis-200401-wss-wssecurity-secext-1.0.xsd";

    public static void main(String[] args) {
        try {
            String endPoint = args[0];
            QName qName = new QName("http://bea.com/albpm/PapiWebService",
"PapiWebService");
            Service service = PapiWebService_Service.create(new URL(endPoint), qName);
```

To be able to invoke operations over PAPI Web Service you have to obtain a `PapiWebService` object. `PapiWebService` exposes all the operations that you can invoke remotely over PAPI Web Service.

```
PapiWebService papiWebServicePort = service.getPort(PapiWebService.class);
```

If there is a problem accessing the WSDL endpoint the URL constructor throws a `MalformedURLException`, so you need to call it inside a try-catch block.

```
        //... Configure Authentication
        //... Operate with PAPI Web Service
    } catch (MalformedURLException e) {
        System.out.println("Could not connect to the web service endpoint");
        e.printStackTrace();
    }
}
```

### Configure Authentication

Before invoking any operation over the web service the client has to authenticate itself. This example shows you how to use JAX-WS with Username Token Profile and HTTP Basic authentication. Usually you choose one of these two mechanisms because PAPI Web Service only uses the second one in case the first authentication mechanism fails. For more information on how authentications mechanisms work in PAPI Web Service, see [PAPI Web Service Security Authentication](#) on page 18.

The code for this authentication mechanisms is divided into two methods, one for each mechanism. These methods should be invoked before invoking any operation over the web service.

```
addUsernameTokenProfile(papiWebServicePort);
addHttpBasicAuthentication(papiWebServicePort);
```

The method `addUsernameTokenProfile()` configures Username Token Profile authentication. Some of the operations performed in this method throw `SOAPException`, so you need to call them inside a try-catch block.

This example adds the header programmatically but you can also configure Username Token Profile using Web Services Interoperability Technologies (WSIT) from Metro Web Services stack. For information about WSIT, see <http://wsit.dev.java>.

```
private static void addUsernameTokenProfile(PapiWebService papiWebServicePort)
    throws SOAPException {
    try {
        SOAPFactory soapFactory = SOAPFactory.newInstance();
        QName securityQName = new QName(SEcurity_NAMESPACE, "Security");
        SOAPElement security = soapFactory.createElement(securityQName);
        QName tokenQName = new QName(SEcurity_NAMESPACE, "UsernameToken");
        SOAPElement token = soapFactory.createElement(tokenQName);
        QName userQName = new QName(SEcurity_NAMESPACE, "Username");
        SOAPElement username = soapFactory.createElement(userQName);
        username.addTextNode("test");
        QName passwordQName = new QName(SEcurity_NAMESPACE, "Password");
        SOAPElement password = soapFactory.createElement(passwordQName);
        password.addTextNode("test");
        token.addChildElement(username);
        token.addChildElement(password);
        security.addChildElement(token);
        Header header = Headers.create(security);
        ((WSBindingProvider) papiWebServicePort).setOutboundHeaders(header);
    } catch (SOAPException e) {
        System.out.println("Could not configure Username Token Profile authentication");
        e.printStackTrace();
    }
}
```

The method `addHttpBasicAuthentication()` configures HTTP Basic authentication by obtaining the request context and adding it the username and password properties.

```
private static void addHttpBasicAuthentication(PapiWebService papiWebServicePort) {
    Map<String, Object> request =
        ((BindingProvider) papiWebServicePort).getRequestContext();
    request.put(BindingProvider.USERNAME_PROPERTY, "test");
    request.put(BindingProvider.PASSWORD_PROPERTY, "test");
}
```

## Operate with PAPI Web Service

Once PAPI Web Service successfully authenticates the client, the client is ready to perform operations over the web service.

The following code retrieves a list of available processes by invoking the method `processesGetIds()` over a `PapiWebService` object. It then iterates over them using those ids to obtain the instances for each process by invoking the method `processGetInstances()` over the `PapiWebService` object. If there is a problem performing any of the requested operations, this method throws an `OperationException`, so you need to invoke it inside a try-catch block. Finally it iterates over those instances invoking the method `getId()` and prints its result.

```
try {
    StringListBean processIds = papiWebServicePort.processesGetIds(true);
```



```

        for (String processId : processIds.getStrings()) {
            System.out.println("\nProcess: " + processId);
            InstanceInfoBeanList instances =
                papiWebServicePort.processGetInstances(processId);
            for (InstanceInfoBean instance : instances.getInstance()) {
                System.out.println("-> " + instance.getId());
            }
        }
    } catch (Operation_Exception e) {
        System.out.println("Could not perform the requested operation");
        e.printStackTrace();
    }
}

```

## Complete Code Example

The following class contains all the steps described in this section.

```

package example;

import java.net.MalformedURLException;
import java.net.URL;
import java.util.Map;
import javax.xml.namespace.QName;
import javax.xml.soap.SOAPElement;
import javax.xml.soap.SOAPException;
import javax.xml.soap.SOAPFactory;
import javax.xml.ws.BindingProvider;
import javax.xml.ws.Service;
import com.sun.xml.ws.api.message.Header;
import com.sun.xml.ws.api.message.Headers;
import com.sun.xml.ws.developer.WSBindingProvider;
import stubs.InstanceInfoBean;
import stubs.InstanceInfoBeanList;
import stubs.Operation_Exception;
import stubs.PapiWebService;
import stubs.PapiWebService_Service;
import stubs.StringListBean;

public class PapiWsJaxWsExample {
    private static final String SECURITY_NAMESPACE =

"http://docs.oasis-open.org/wss/2004/01/oasis-200401-wss-wssecurity-secext-1.0.xsd";

    public static void main(String[] args) {

        try {
            ////////////////////////////////////////////////// Initialize the web service client //////////////////////////////////////////////////
            String endPoint = args[0];
            QName qName = new QName("http://bea.com/albpm/PapiWebService",
"PapiWebService");
            Service service = PapiWebService_Service.create(new URL(endPoint), qName);
            PapiWebService papiWebServicePort = service.getPort(PapiWebService.class);

            ////////////////////////////////////////////////// Configure authentication //////////////////////////////////////////////////
            addUsernameTokenProfile(papiWebServicePort);
            addHttpBasicAuthentication(papiWebServicePort);

            ////////////////////////////////////////////////// Operate with PAPI Web Service //////////////////////////////////////////////////
            try {
                StringListBean processIds = papiWebServicePort.processesGetIds(true);
                for (String processId : processIds.getStrings()) {
                    System.out.println("\nProcess: " + processId);
                    InstanceInfoBeanList instances =
papiWebServicePort.processGetInstances(processId);
                    for (InstanceInfoBean instance : instances.getInstance()) {
                        System.out.println("-> " + instance.getId());
                    }
                }
            }
        }
    }
}

```

```

    }
    } catch (OperationException_Exception e) {
        System.out.println("Could not perform the requested operation");
        e.printStackTrace();
    }
} catch (MalformedURLException e) {
    System.out.println("Could not connect to the web service endpoint");
    e.printStackTrace();
}
}

private static void addHttpBasicAuthentication(PapiWebService papiWebServicePort) {
    Map<String, Object> request =
        ((BindingProvider) papiWebServicePort).getRequestContext();
    request.put(BindingProvider.USERNAME_PROPERTY, "test");
    request.put(BindingProvider.PASSWORD_PROPERTY, "test");
}

private static void addUsernameTokenProfile(PapiWebService papiWebServicePort) {
    try {
        SOAPFactory soapFactory = SOAPFactory.newInstance();
        QName securityQName = new QName(SEcurity_NAMESPACE, "Security");
        SOAPElement security = soapFactory.createElement(securityQName);
        QName tokenQName = new QName(SEcurity_NAMESPACE, "UsernameToken");
        SOAPElement token = soapFactory.createElement(tokenQName);
        QName userQName = new QName(SEcurity_NAMESPACE, "Username");
        SOAPElement username = soapFactory.createElement(userQName);
        username.addTextNode("test");
        QName passwordQName = new QName(SEcurity_NAMESPACE, "Password");
        SOAPElement password = soapFactory.createElement(passwordQName);
        password.addTextNode("test");
        token.addChildElement(username);
        token.addChildElement(password);
        security.addChildElement(token);
        Header header = Headers.create(security);
        ((WSBindingProvider) papiWebServicePort).setOutboundHeaders(header);
    } catch (SOAPException e) {
        System.out.println("Could not configure Username Token Profile authentication");
        e.printStackTrace();
    }
}
}
}

```

## Running Java JAX WS Client Example

The example contains all the necessary libraries to generate the stubs, compile and run it. These libraries are contained in the directory lib. It also contains an ant script that contains all the necessary configurations to compile and run the client.

To run the example you need to install Ant. You can download it from <http://ant.apache.org/bindownload.cgi>

To Run this example:

1. Enable PAPI Web Service for an already existing project.  
See [Enabling PAPI Web Service](#) on page 14.
2. Download the example from  
[http://edocs.bea.com/albsi/docs60/resources/papi\\_ws/ALBPM-PapiWs-JaxWs-Example.zip](http://edocs.bea.com/albsi/docs60/resources/papi_ws/ALBPM-PapiWs-JaxWs-Example.zip).
3. Unzip the file. This will generate a directory named ALBPM-PapiWs-JaxWs-Example.
4. Open a command-line session.
5. Change to the generated directory.  
For example in Linux: `cd ALBPM-PapiWs-JaxWs-Example`.

**6. Type ant run.**

Executing this task generates the stubs the client code needs to run, using the ant task JAX WS provides for this purpose, and compiles the classes used in the example before running them.

**7. Enter PAPI Web Service's endpoint.**

You can copy this from the link displayed next to WSDL in the Web Services Console. For information on how to launch the Web Services Console see [PAPI Web Service Configuration Console](#) on page 16.

After executing this procedure the example program runs. You will see a list of the processes deployed in the running process engine and below them a list of all the in flight instances in each process.

## PAPI Web Service .NET Client Example

This section shows an example of a client developed with .NET Framework. This example uses PAPI Web Service to retrieve a list of process instances visible to the connected user.

### Download

You can download the complete code of this example from [http://edocs.bea.com/albsi/docs60/resources/papi\\_ws/ALBPM-PapiWs-DotNet-Example.zip](http://edocs.bea.com/albsi/docs60/resources/papi_ws/ALBPM-PapiWs-DotNet-Example.zip) . This project was developed using .NET Framework 2.0.5 and Microsoft Web Service Enhancements 3.0.

The syntax used for this example is C#.

## .NET Client Main-Class

This section analyzes the main-class of the .NET client example step by step.

### Programming a .NET Client

The typical steps you have to follow to use PAPI Web Service with JAX-WS stack are:

- Import the required libraries.
- Initialize the web service.
- Configure authentication.
- Operate with PAPI Web Service.

### Import the Required Libraries

This example uses classes from `System.Web.Services.Protocols` and `System.Net` packages. You have to import these classes to be able to use them in your code. The following code imports the classes from these packages that are used in this example.

```
using System.Web.Services.Protocols;
using System.Net;
```

The following code imports the classes that the client needs to perform authentication.

```
using Microsoft.Web.Services3.Security.Tokens;
using Microsoft.Web.Services3.Design;
```

You also have to import the automatically generated stubs. In the example project these classes were generated in the package `PAPI_WS2_Sample.papiws`.

```
using PAPI_WS2_Sample.papiws;
```

## Initialize the Web Service

The following code instantiates a web service proxy. This proxy will provide access to the operations exposed by PAPI Web Service.

```
papiws.PapiWebServiceWse proxy = new papiws.PapiWebServiceWse();
```

## Configure Authentication

Before invoking any operation over the web service the client has to authenticate. This example uses plain text Username Token Profile authentication. The authentication mechanism has to match the one you define in WSE 3 policy settings.

The following code creates a username token and sets it as the client credentials. Then it sets the client security policy by passing the id of this policy as an argument, to the method `SetPolicy()`.

```
UsernameToken token = new UsernameToken("test", "test", PasswordOption.SendPlainText);
proxy.SetClientCredential<UsernameToken>(token);
proxy.SetPolicy("ALBPM_Policy");
```

## Operate with PAPI Web Service

The following code retrieves a list of available processes by invoking the method `processesGetIds` over a `PapiWebServiceWse` object. It then iterates over them using those ids to obtain the instances for each process by invoking the method `processGetInstances()` over the `PapiWebServiceWse` object. If there is a problem performing any of the requested operations, this method throws a `SoapException`, so you need to invoke it inside a try-catch block. It is a good practice to wrap this exception in user-defined exception. Finally it iterates over those instances invoking the method `getId()` and prints its result.

```
try {
    //...
    foreach (string processId in processIds)
    {
        Console.Out.WriteLine("\n Process: " + processId);
        instanceInfoBean[] instances = proxy.processGetInstances(processId);
        foreach (instanceInfoBean instance in instances)
        {
            Console.Out.WriteLine(" -> " + instance.id);
        }
    }
}
catch (SoapException e)
{
    OperationException oe = new OperationException(e.Message);
    throw oe;
}
```

## Complete Code Example

The following class is the main class of the .NET PAPI Web Service client example.

```
using System;
using System.Collections.Generic;
using System.Text;
using System.Web.Services.Protocols;
using System.Net;
using PAPI_WS2_Sample.papiws;

using Microsoft.Web.Services3.Security.Tokens;
using Microsoft.Web.Services3.Design;
```

```

namespace PAPI_WS2_Sample
{
    class Program
    {
        static void Main(string[] args)
        {
            //Set a custom handler for unhandled exceptions (optional)
            AppDomain.CurrentDomain.UnhandledException += Program.UnhandledExceptionHandler;

            try
            {
                ////////////////////////////////////////////////// Initialize the web service client ///////////////////////////////////

                papiws.PapiWebServiceWse proxy = new papiws.PapiWebServiceWse();

                ////////////////////////////////////////////////// Configure authentication ///////////////////////////////////
                UsernameToken token = new UsernameToken("test", "test",
                PasswordOption.SendPlainText);
                proxy.SetClientCredential<UsernameToken>(token);
                proxy.SetPolicy("ALBPM_Policy");

                //set timeout and encoding
                proxy.Timeout = 60000;
                proxy.RequestEncoding = Encoding.UTF8;

                ////////////////////////////////////////////////// Operate with PAPI Web Service ///////////////////////////////////
                string[] processIds = proxy.processesGetIds(false);

                foreach (string processId in processIds)
                {
                    Console.Out.WriteLine("\n Process: " + processId);
                    instanceInfoBean[] instances = proxy.processGetInstances(processId);

                    foreach (instanceInfoBean instance in instances)
                    {
                        Console.Out.WriteLine(" -> " + instance.id);
                    }
                }

                catch (SoapException e)
                {
                    OperationException oe = new OperationException(e.Message);
                    throw oe;
                }
            }

            static public void UnhandledExceptionHandler(object sender,
            UnhandledExceptionEventArgs e)
            {
                Console.Error.WriteLine("Unhandled Exception: \n" +
                e.ExceptionObject.ToString());
                Environment.Exit(-1);
            }
        }

        public class OperationException : Exception
        {
            public OperationException(String message) : base(message)
            {
            }
        }
    }
}

```