

FuegoBPM 5 Installation Guide

Fuego, Inc.

FuegoBPM 5 Installation Guide

by Fuego, Inc.

Published January, 2005 - Version 5.5. Revision 10 - June, 2006.

Copyright © 2001-2006 Fuego, Inc.

FuegoBPM 5 Installation Guide

Copyright 2001-2006 Fuego, Inc. All rights reserved.

This documentation is subject to change without notice. This documentation and the software described in this document contains proprietary trade secrets and confidential information of Fuego, Inc. and is also protected by U.S. and other copyright laws and applicable international treaties. Use of this documentation and the software is subject to the license agreement between you and Fuego, Inc. If no such license agreement exists, you may not use this documentation and software in any manner whatsoever. Unauthorized use of the documentation or software, or any portion of it, will result in civil liability and/or criminal penalties. U.S. Patent Pending.

Fuego, Fuego 4, Component Manager, Process Designer, Work Portal, Orchestration Engine, Execution Console, Process Analyzer, Organization Administrator are trademarks or registered trademarks of Fuego, Inc.

FuegoBPM 5, FuegoBPM Studio, FuegoBPM Designer, FuegoBPM Enterprise Administration Center, FuegoBPM Work Portal, FuegoBPM Portal Console, FuegoBPM Archive Viewer, FuegoBPM Logviewer, FuegoBPM Express Server, FuegoBPM Enterprise Server, FuegoBPM Application Server Edition, FuegoBPM Web Console, FuegoBPM Process Analyzer, FuegoBPM Data Store, FuegoBPM Dashboard, FuegoBPM BAM, FuegoBPM Portlets, FuegoBPM Suite, FuegoBPM Deployer, FuegoBPM Failover, FuegoBPM VCS, FuegoBPM Ant Tasks, FuegoBPM FDI, FuegoBPM Help Viewer, FuegoBPM Server are trademarks or registered trademarks of Fuego, Inc.

InstallAnywhere is a registered trademark of Zero G Software, Inc. Solaris and Java are trademarks of Sun Microsystems, Inc. Windows is a registered trademark of Microsoft Corporation.

All other trademarks, trade names, and service marks are owned by their respective companies.

Table of Contents

1. Introduction	5
2. General Installation Instructions	16
3. FuegoBPM Studio	18
Installing FuegoBPM Studio	18
Uninstalling FuegoBPM Studio	25
Troubleshooting the Installation of FuegoBPM Studio	29
4. FuegoBPM Designer	31
Installing FuegoBPM Designer	31
Uninstalling FuegoBPM Designer	31
Troubleshooting the Installation of FuegoBPM Designer	31
5. FuegoBPM Enterprise Server	33
Installing FuegoBPM Enterprise Server	33
Launching the Administration Center	40
Uninstalling FuegoBPM Enterprise Server	44
Troubleshooting the Installation of FuegoBPM Enterprise Server	49
6. FuegoBPM Application Server Edition	51
Introduction	51
Assumptions and requirements	51
Supported Platforms	52
Common Settings	52
Required FuegoBPM configurations	52
Required Application Server Resources	52
Creating the EAR builder scripts	54
7. FuegoBPM Applications non interactive installation	57
Steps for non interactive installation	57

Chapter 1. Introduction

Introduction

About this Guide

This guide is a reference for installing the FuegoBPM system. Within it, you will find technical tips, descriptions of common tasks, and descriptions of steps required to install the FuegoBPM system and third-party software.

Audience

This document is for system administrators, developers and consultants who install, deploy and administer the FuegoBPM system.

Assumptions

Before you install the FuegoBPM system or any FuegoBPM application, you should be familiar with the following concepts:

- Basic administrative procedures of your operating system (UNIX or Windows)
- FuegoBPM applications
- directory services
- Relational databases
- Java and web-technologies

Note



In addition to becoming familiar with the software, you must have the necessary privileges in your environment to install the FuegoBPM components and the other required software.

Pre-Installation

The FuegoBPM system installation involves integration with external systems and third-party software packages. Prior to installing the FuegoBPM system, you should:

1. Confirm that your system meets the minimum software and hardware requirements.
2. Confirm that all third-party software is installed or is available for installation as described in the installation procedures.

FuegoBPM Suite applications

The FuegoBPM system contains the following applications and is designed to work on a variety of platforms.

FuegoBPM Studio

FuegoBPM Designer

FuegoBPM Enterprise Administration Center

FuegoBPM Logviewer

FuegoBPM Server

FuegoBPM Web Console Web Application

FuegoBPM Work Portal Web Application

FuegoBPM Portal Console Web Application

FuegoBPM Data Store Service

System Requirements

The following sections list the minimum hardware and software requirements. However, the actual requirements for your system may be greater, depending on the complexity of your specific FuegoBPM environment.

Operating Systems

FuegoBPM supports the following operating systems:

Table I

Operating System	FuegoBPM Studio	FuegoBPM Designer	FuegoBPM Server	FuegoBPM Enterprise Administration Center
'98, ME	X	X		
NT 4.0 Workstation (Service Pack 3 or higher)	X	X	X	X
NT 4.0 Server (Service Pack 3 or higher)	X	X	X	X
NT 4.1 Workstation	X	X	X	X
NT 4.1 Server	X	X	X	X
Windows 2000 Professional, Server, Advanced Server, or 2003	X	X	X	X
Windows XP	X	X	X	X
Sun Solaris	X		X	X

Operating System	FuegoBPM Studio	FuegoBPM Designer	FuegoBPM Server	FuegoBPM Enterprise Administration Center
ver. 2.6 or higher				
AIX 4.3 or higher	X		X	X
HP-UX 11.00 (Java.1.4.2 support)	X		X	X
Linux Red Hat distribution ver. 6.x or higher	X	X	X	X
Linux SUSE distribution ver. 6.0 or higher	X	X	X	X

Table II: FuegoBPM Web Applications

Operating System	FuegoBPM Work Portal	FuegoBPM Portal Console	FuegoBPM Web Console
'98, ME	X		X
NT 4.0 Workstation (Service Pack 3 or higher)	X	X	X
NT 4.0 Server (Service Pack 3 or higher)	X	X	X
NT 4.1 Workstation	X	X	X

Operating System	FuegoBPM Work Portal	FuegoBPM Portal Console	FuegoBPM Web Console
NT 4.1 Server	X	X	X
Windows 2000 Professional, Server, Advanced Server, or 2003	X	X	X
Windows XP	X	X	X
Sun Solaris ver. 2.6 or higher	X*	X	X
AIX 4.3 or higher	X*	X	X
HP-UX 11.00 (Java.1.4.2 support)	X*	X	X
Linux Red Hat distribution ver. 6.x or higher	X*	X	X
Linux SUSE distribution ver. 6.0 or higher	X*	X	X

*If a Java Servlet / JavaServer Pages (JSP) Server can be deployed in operating system.

Table III: Other FuegoBPM Applications

Operating System	COM Bridge	FuegoBPM Process Analyzer
'98, ME	X	X
NT 4.0 Workstation (Service Pack 3 or higher)	X	X
NT 4.0 Server (Service Pack 3 or higher)	X	X

Operating System	COM Bridge	FuegoBPM Process Analyzer
NT 4.1 Workstation	X	X
NT 4.1 Server	X	X
Windows 2000 Professional, Server, Advanced Server, or 2003	X	X
Windows XP	X	X
Sun Solaris ver. 2.6 or higher		X
AIX 4.3 or higher		X
HP-UX 11.00 (Java.1.4.2 support)		X
Linux Red Hat distribution ver. 6.x or higher		X
Linux SUSE distribution ver. 6.0 or higher		X

Fuego Enterprise running on J2EE Application Servers

Application Server Versions supported:

- IBM WebSphere 5.1.1.x
- BEA WebLogic 8.1 Service Pack 5 or greater Service Pack
- JBoss 3.2.x with latest Service Pack.

Application Server deployments are limited to the platforms supported by the Application Server vendor. Fuego has certified the Fuego's Enterprise Engine for J2EE has been tested on the following

platforms:

- IBM WebSphere 5.1.1.x: Checks on Windows 2000, 2003, Solaris, Linux RedHat and SUSE.
- BEA WebLogic 8.1 Service Pack 5 or greater: Checks on Windows 2000, 2003, Sun Solaris, Linux RedHat and SUSE.
- JBoss 3.2.x: Checks on Windows 2000, 2003, Solaris, Linux RedHat and SUSE.

Disk Space, RAM and Processor

Successful installation of FuegoBPM requires that you follow the requirements listed in the two following tables.

Disk Space Requirements

Platform	With Java Virtual Machine	Without Java Virtual Machine
Windows	450 MB	380 MB
UNIX	450 MB	380 MB

RAM Requirements and Directory Services/RDBMS Access

FuegoBPM Tool	RAM (MB)	Directory Services Access Necessary?	RDBMS Access
FuegoBPM Studio	512 MB Minimum	No	No
FuegoBPM Designer	512 MB Minimum	No	No
FuegoBPM Web Console Application on Web Server	256 MB Minimum and Recommended.	Yes (it will update the Fuego Object metadata in the Directory)	No.

FuegoBPM Tool	RAM (MB)	Directory Services Access Necessary?	RDBMS Access
		Service).	
FuegoBPM Enterprise Server (Standalone and Application Server Edition)	512 MB Minimum - 1GB Recommended, subject to the type and amount of processes being run.	Yes	Yes
FuegoBPM Enterprise Administration Center	128 MB Minimum - 256 MB Recommended	Yes (to create and extend Directory Service Schemas)	Yes
COM Bridge	8 MB Minimum - 16 MB Recommended	No	No
FuegoBPM Work Portal Web Application on Web Server	128 MB Minimum - 256 MB Recommended (see note below)	Yes	No

Note



the range shown for the Work Portal Web Application on a Web Server is for a cache of 5,000 instances, with 16 KB per instance maximum size.

Processor

FuegoBPM Tool	Processor
FuegoBPM Studio	Pentium (R) III Processor at 750 MHz
FuegoBPM Enterprise Server (Standalone and Application Server)	Pentium (R) 4 Processor at 1 Ghz

FuegoBPM Tool	Processor
Ediiton)	

Java Development Kit

FuegoBPM is compatible with any of the following versions of the Java Development Kit (JDK) and Java Runtime Environment (JRE):

- Sun J2SE 1.4.2 SDK for Microsoft Windows platforms (latest patches included)
- Sun J2SE 1.4.2 SDK for Solaris platforms (latest patches installed)
- Sun J2SE 1.4.2 SDK for Linux platforms (latest patches installed)
- IBM J2SE 1.4.2 SDK for AIX platforms (latest patches installed)

Relational Databases

The following relational database management systems (RDBMSs) can be used by the FuegoBPM Server:

- Oracle 8i, Oracle 9i and Oracle 10g Enterprise or Standard versions through Oracle JDBC Drivers
- Microsoft SQL Server 7 or higher through I-net JDBC Drivers
- IBM DB2 Universal Database version 8 or greater through DB2 (Type 2 or Type 4) JDBC Drivers
- Sybase (AES) version 12.5 through Sybase JDBC Drivers
- Informix IDS version 9.4 UC2 or higher through Informix JDBC Drivers

Directory Services

FuegoBPM supports the following directory services:

- Sun Java System Directory Server 5.2 or higher (ex Netscape iPlanet LDAP 4.12)
- Microsoft Active Directory 2000 or higher
- Oracle 8i, Oracle 9i and Oracle 10g Enterprise or Standard versions
- MSSQL Server 7 or higher through I-net JDBC drivers (Opta or Merlia Drivers)
- IBM DB2 Universal Database version 8 or higher
- Sybase (AES) version 12.5 or higher

Web Server and Java Servlet / JSP Server

The web server and Java Servlet / JavaServer Pages (JSP) server work together so that end users can connect to FuegoBPM's Work Portal, FuegoBPM's Portal Console and FuegoBPM's Web Console using an Internet browser.

FuegoBPM supports the following web servers and servlet servers:

- BEA Web Logic Application Server 8.1 SP5 or higher
- IBM WebSphere Application Server 5.1.1.x
- JBoss 3.2.x
- Microsoft IIS with Tomcat 4.1.30 or 4.1.x where $x > 30$
- Tomcat 4.1.30 or 4.1.x where $x > 30$

- Apache with Tomcat 4.1.30 or 4.1.x where $x > 30$

Note



FuegoBPM Web Applications (FuegoBPM Work Portal, FuegoBPM Portal Console and FuegoBPM Web Console) must run in a JSP/Servlet Container running a 1.4.2 Compatible Java Virtual Machine.

Note



FuegoBPM supports any JSP/Servlet server that supports Servlet 2.3 and JSP 1.2 specifications.

Internet Browsers

For end users using FuegoBPM's Work Portal, FuegoBPM supports the following Internet browsers:

- Internet Explorer, version 6.0 or higher
- Netscape Navigator, version 7.2 or higher
- Firefox, version 1.0 or higher

Chapter 2. General Installation Instructions

General Installation Instructions

The FuegoBPM installer provides a GUI setup program that guides you through the installation of the FuegoBPM system. On window platforms, you will need to use a user with Administrator permission since the installer updates the windows registry and installs Windows services. On UNIX platforms you will need a user with enough permissions to write on the selected target directory. It is recommended you be logged in as the vested "Fuego" user before starting the installation.

To begin the installation using a browser

1. Launch the installer in one of the following ways:
 - a. **From a CD ROM** - Upon loading the CD in your machine, the installer should immediately start. If this does not happen, open the install.htm file located on the CD.
 - b. **From an Internal URL provided by your company's administrator** - Launch your browser and type in the URL address, given to you by the Fuego administrator, in the address bar.
 - c. **From an External URL provided by Fuego representative** - Launch your browser and type in the URL address, given to you by your company's administrator, in the address bar.
2. After you have entered the URL to start the installer, a security warning dialog box will appear. Depending on which browser is

used, you will get different applet permissions displayed. Select Yes (Internet Explorer) or Grant this session (Netscape) to start the FuegoBPM Installer.

Note



If no security warning displays, it may be because you have already granted permissions to the certificate checked and certified by Verisign, so that the applet installer can write files on your disk.

3. The FuegoBPM installation page is displayed. By default the installer will automatically detect the client platform in which the browser is running. Click the Start Installer for Windows... button to start the installation.
4. The Checking Space on Local Disk dialog box appears. This will check the disk space on your machine to ensure there is enough space to install the FuegoBPM system while. The HTML page can be seen as a bootstrap to download the right installer and launch it after the download is finished.
5. Once the local disk space is checked, the Installer is launched locally from the directory specified in the dialog.
6. Once the installer is started, the FuegoBPM installation page appears.

Chapter 3. FuegoBPM Studio

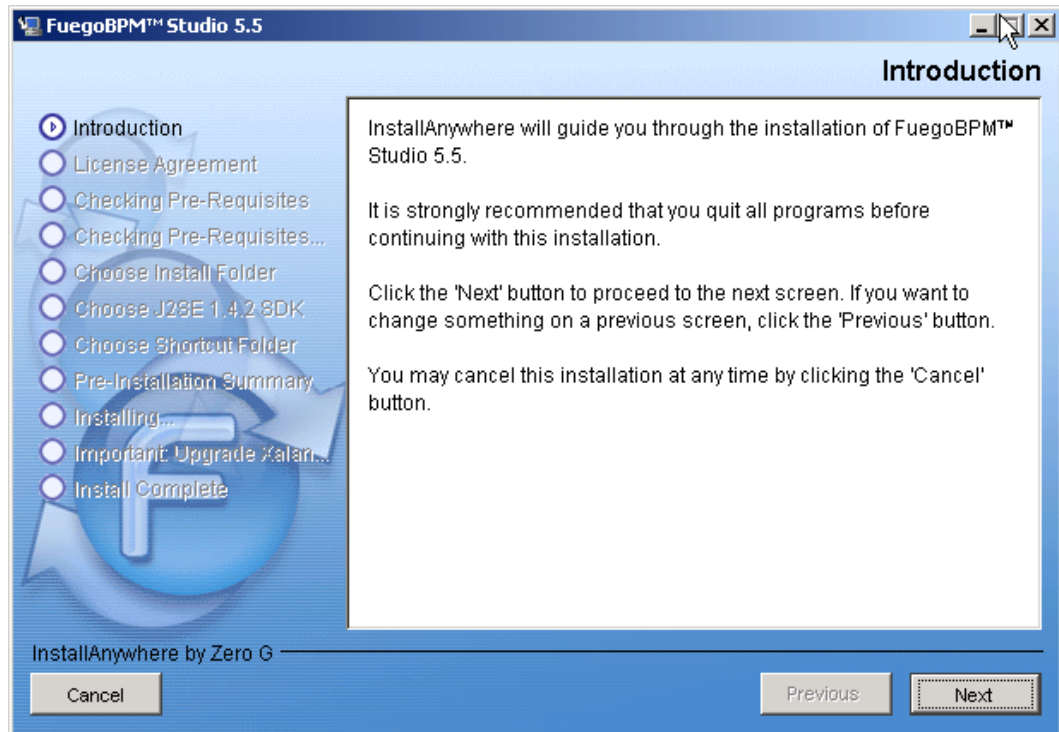
Installing FuegoBPM Studio

Once the installer is started, the FuegoBPM Studio installation page appears.

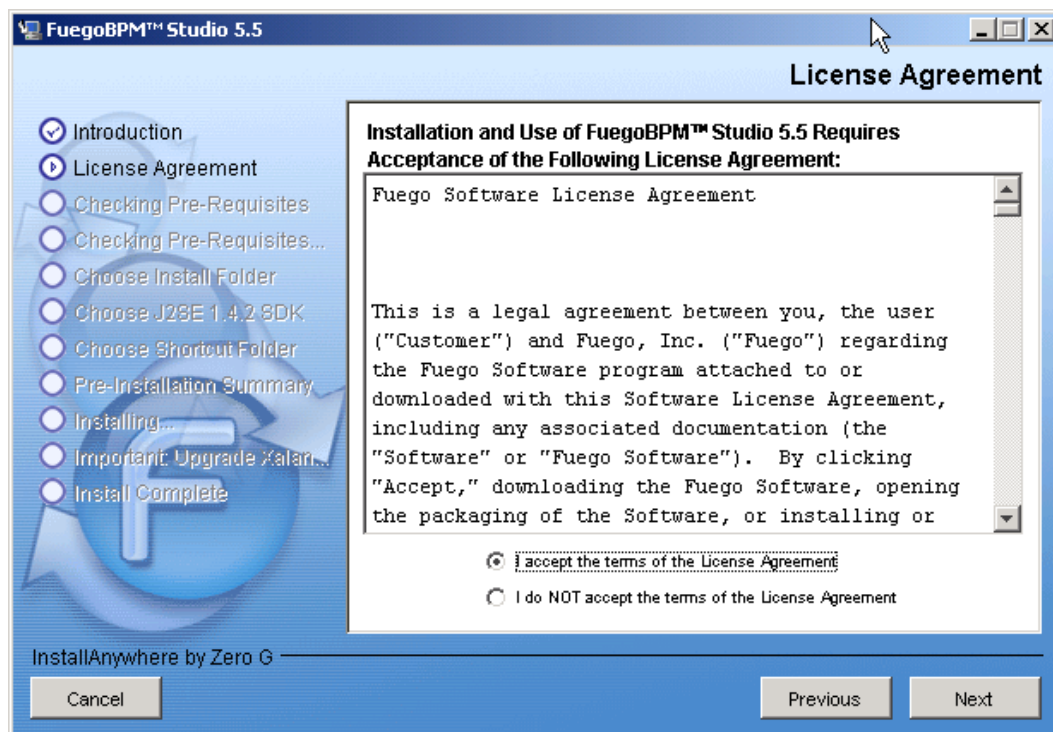
1. Select the installation default language and click **OK** to continue.



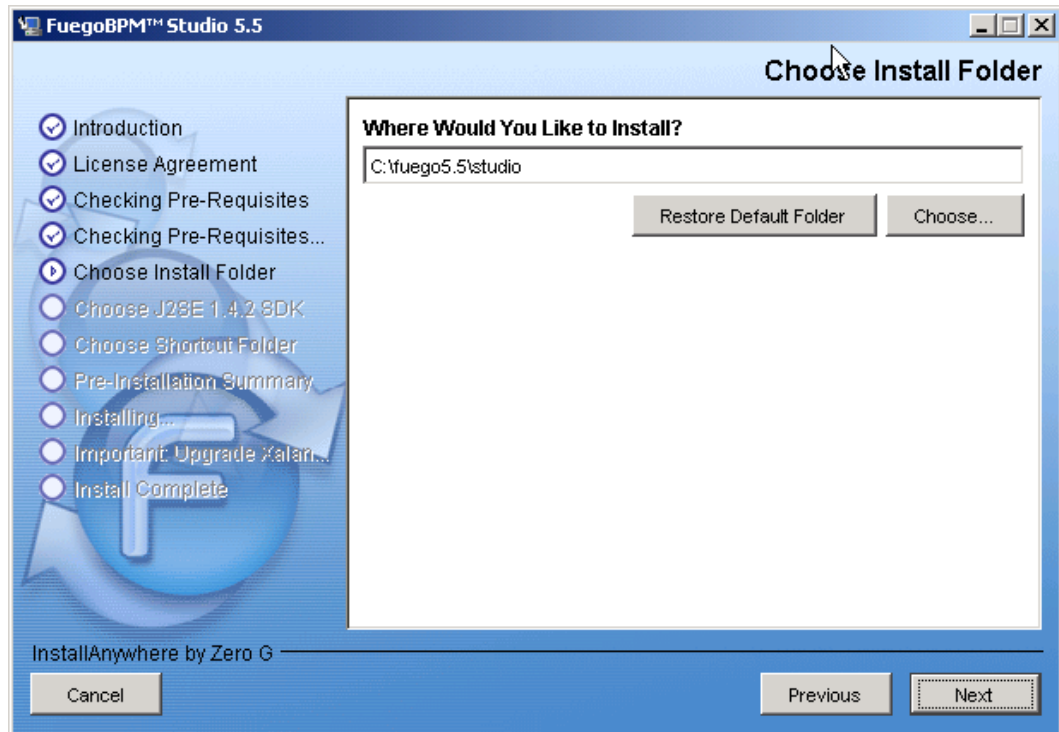
2. The installation introduction page appears. Click Next to continue.



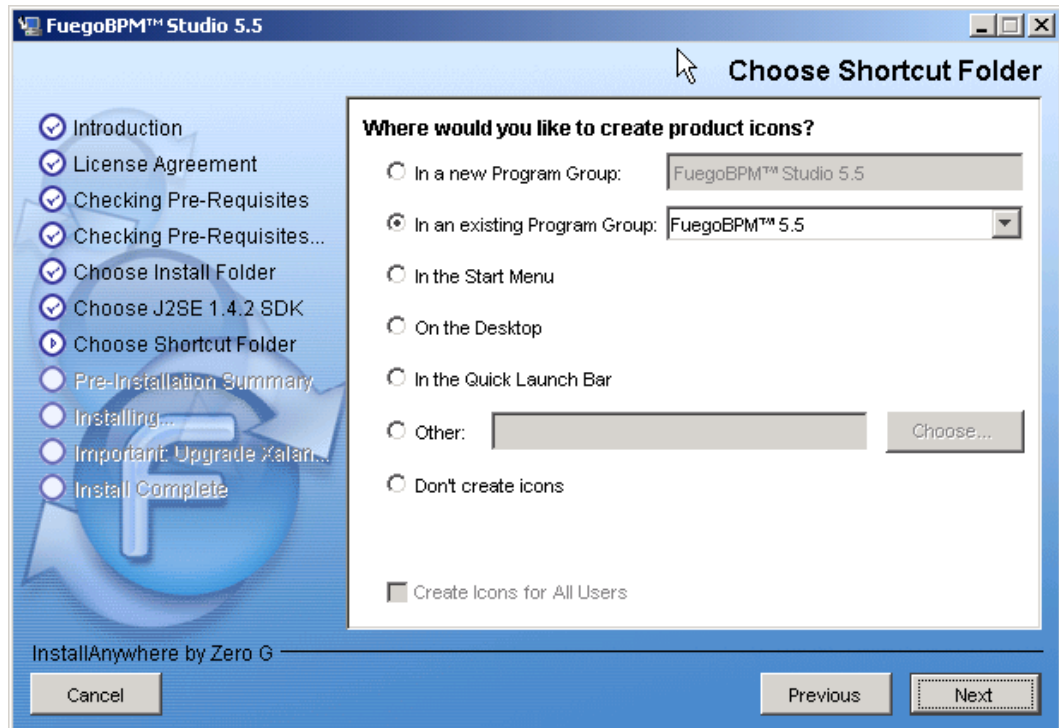
3. The FuegoBPM license agreement appears. Read the license agreement and select the **I accept...** radio button, if you agree to the license terms and then click **Next** to continue with installation. If you do not want to proceed with the installation, click the **I do NOT...** radio button and then **Cancel** to exit the installation.



4. Next, you will need to select the folder where you want to install the FuegoBPM system. Accept the default installation location or browse to a different location then click **Next**.



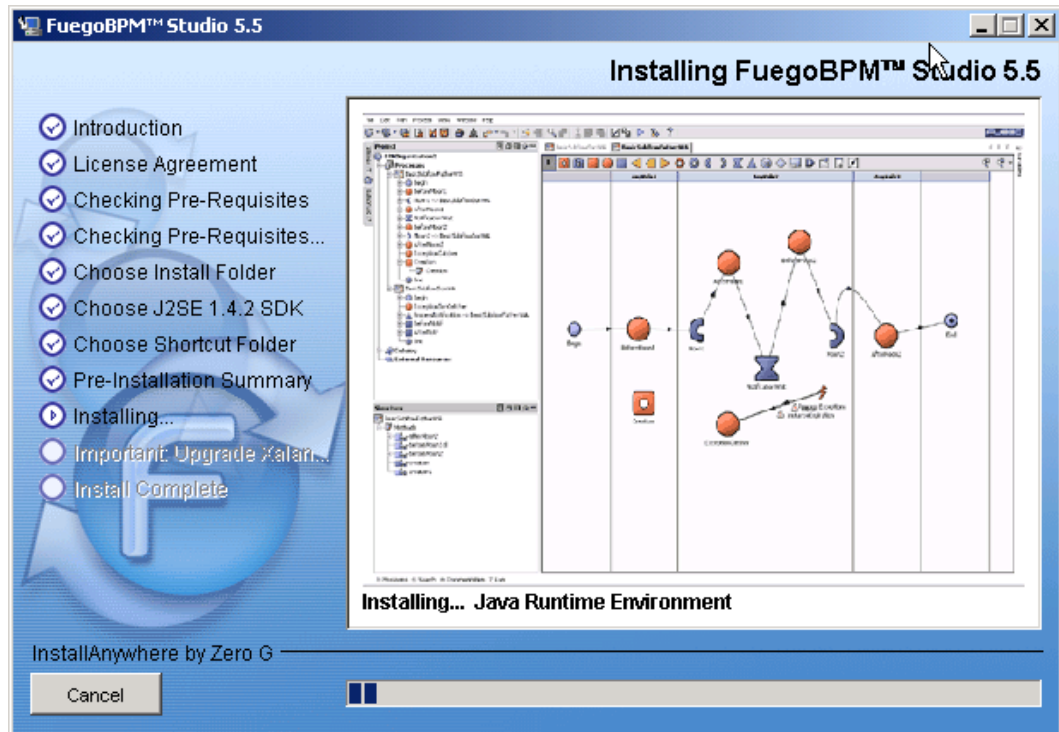
5. Choose a Shortcut folder. This is where the product icons will be stored. Click **Next** to continue.



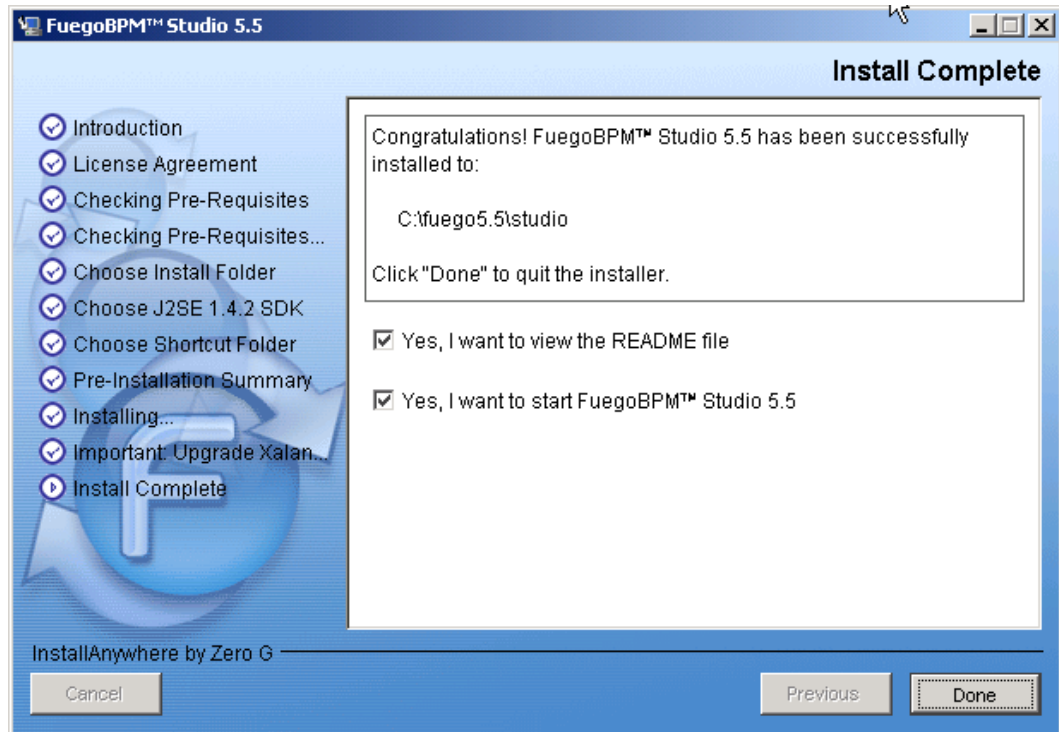
6. The installer displays a *pre-installation summary* of the options you have selected so far. If you need to change any of your options, click **Previous**; otherwise click **Install**.



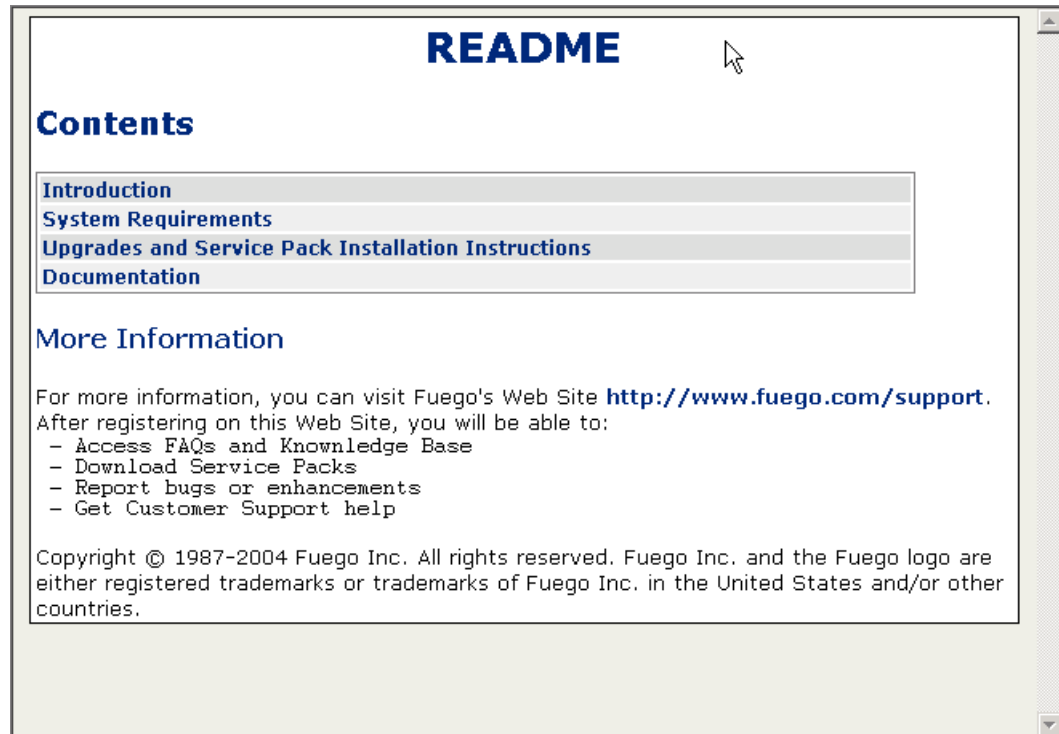
7. The FuegoBPM Studio installation begins.



8. When the installation is completed, the *Install Complete* dialog box will display. Click the check box **Yes, I want to view the README file**, if you want this file to be open in a browser. Click the check box **Yes, I want to start FuegoBPM Studio 5.X**, if you want to open the application. Click **Done** to quit the installer.



9. If you select the check box to view the README file, it is opened in a browser. The file has links to find more information and documentation.



What to do next

Once you have installed the FuegoBPM Studio, the first time you start the application, you have to install the license key to be able to begin working.

Uninstalling FuegoBPM Studio

Some considerations to have in mind before uninstalling FuegoBPM Studio.

- The directory structure below FuegoBPM Studio installation directory is removed when it is uninstalled. As a good practice, do not locate any file below these directories. If you did so, back up them.
- If you used the embedded database provided by FuegoBPM

Studio, and located any database below the *cview* directory or any other directory below FuegoBPM Studio installation directory, back up them. Copying the database directory in any other file system location is enough to make it work if you are going to reinstall FuegoBPM Studio.

Running the Uninstaller

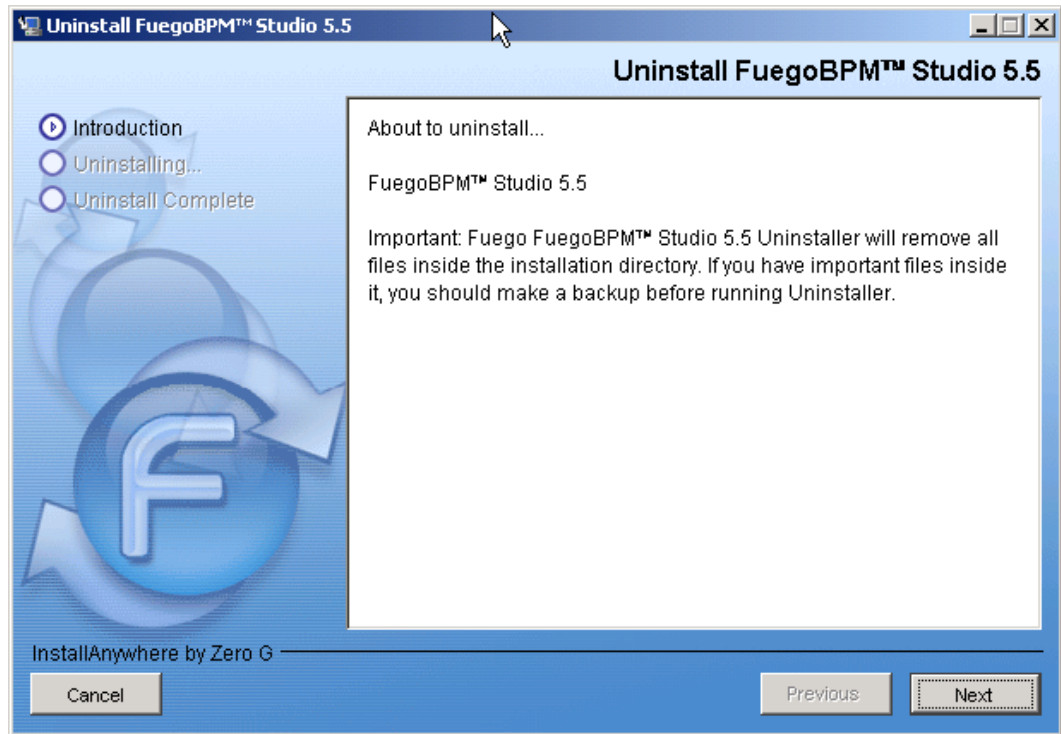
To begin uninstalling the FuegoBPM system ,

Do one of the following to launch the Uninstaller application:

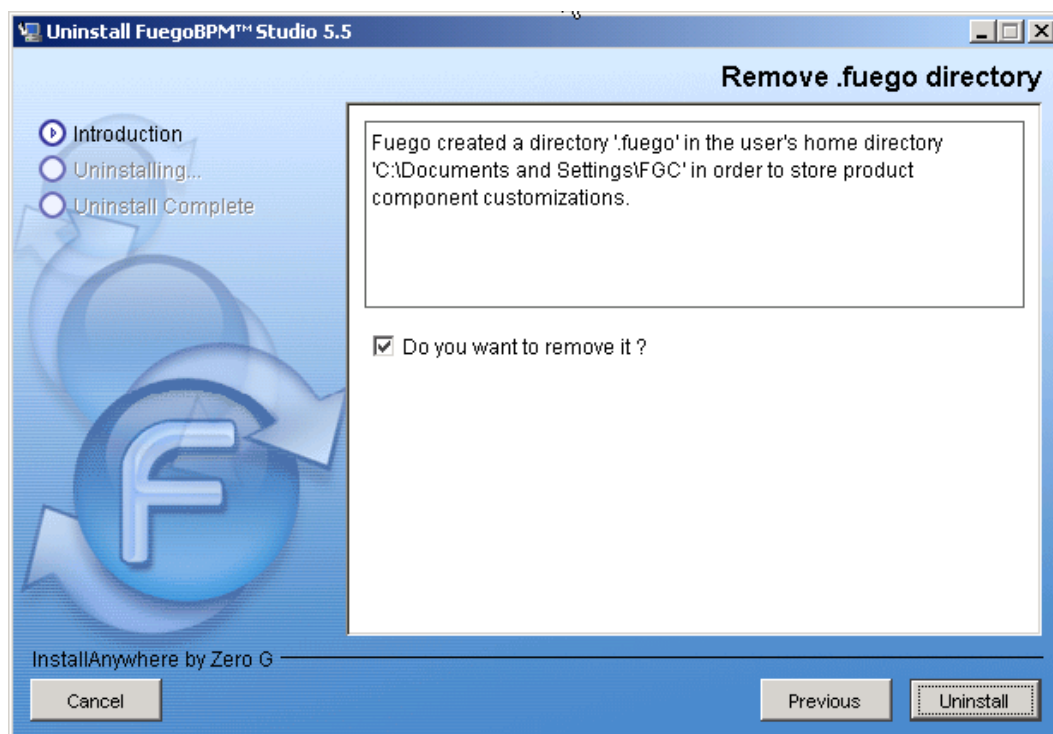
- On a Windows platform
 - Close the FuegoBPM Studio Application,
 - Next, from the Windows Control Panel and select Add/Remove Programs.
 - Select Fuego5.X from the list of installed programs.
 - Click Remove. The Uninstaller dialog box appears.
- On a UNIX platform
 - Open a command line.
 - Navigate to the UninstallerData directory under the FuegoBPM installation directory. For example, `c:/Fuegox.x/uninstallerdata/`
 - Run the *UninstallFuegoInstaller* script located in this directory.

The unistaller dialog will display:

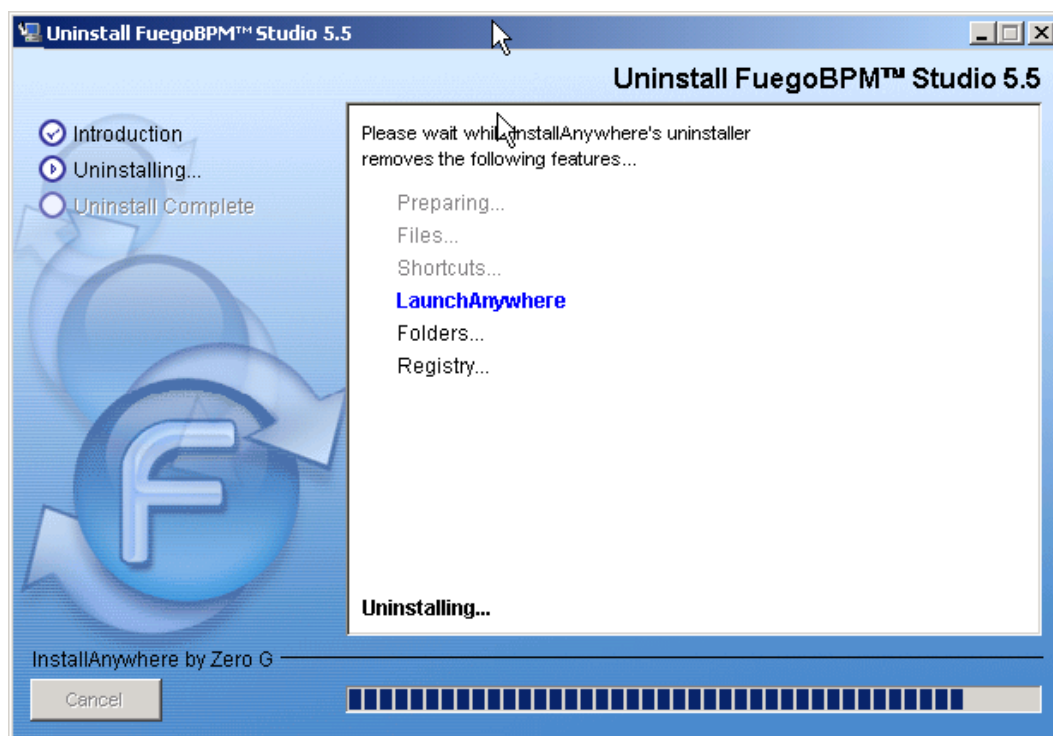
1. Click the **Uninstall** button to begin the uninstallation.



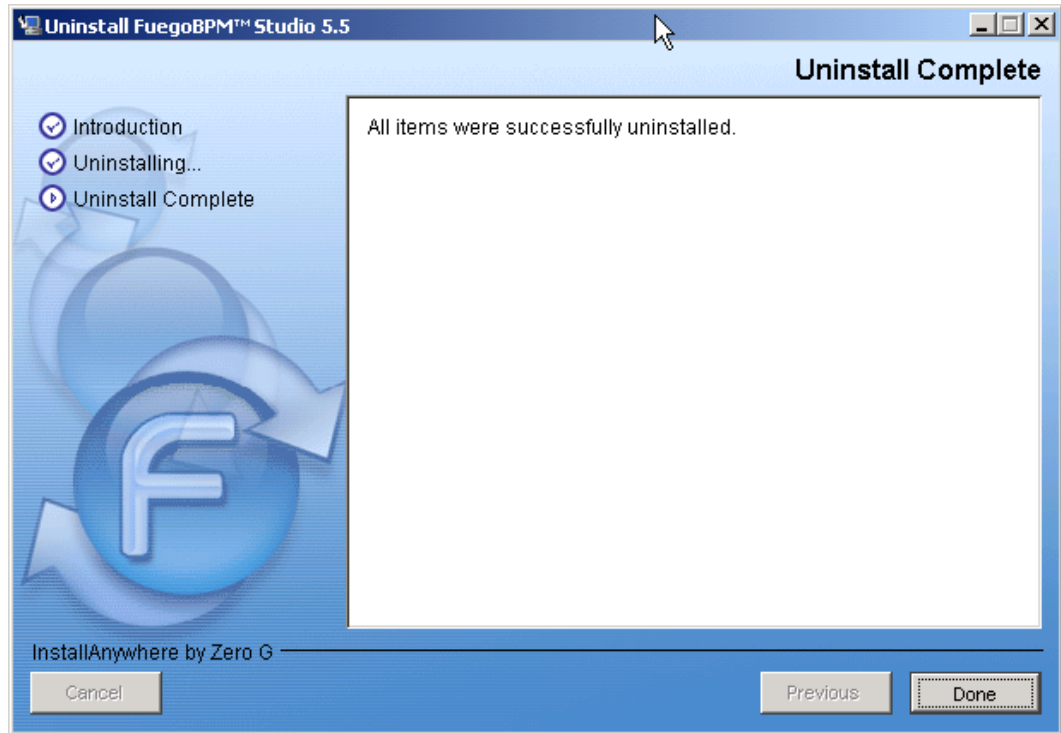
2. A confirmation is asked to remove the directory created under the *home* directory for installing product customizations. Select the **Do you want to remove it?** checkbox if it can be removed, unselect it if you want to preserve it.



3. The uninstallation process begins.



4. Once it is completed, click **Done** to close the application. Remember to restart your computer to complete the uninstallation.



Troubleshooting the Installation of FuegoBPM Studio

Log Files

Log files are created automatically when you install, open, and run any of the FuegoBPM applications. The log files are stored in the log directory under the FuegoBPM installation directory (for example, C:\fuego5\studio\log). The file can be opened in any text editor such as Wordpad or Notepad on Windows systems. The following table lists the files name.

File Name	Application
<i>Fuego_Orchestration_Studio_5.X_InstallLog.log</i>	The log file generated during Studio installation, shows the installation steps and how they were executed.
<i>Fuego_Studio_Tutorial_InstallLog.log</i>	The log file generated during the Tutorial installation, shows the installation steps and how they were executed.
<i>studio.log</i>	This is the application log. This file contains warnings, etc., generated by the application. This file is by default overwritten each time Studio starts.
<i>studioConsole.log</i>	These are the console output of the Studio program, these files are overwritten each time Studio is started.

Chapter 4. FuegoBPM Designer

Installing FuegoBPM Designer

To install FuegoBPM Designer follow the same steps indicated for FuegoBPM Studio.

Uninstalling FuegoBPM Designer

To install FuegoBPM Designer follow the same steps indicated for FuegoBPM Studio.

Troubleshooting the Installation of FuegoBPM Designer

After installing FuegoBPM Designer some directories are generated. The most relevant are defined in the following sections.

bin directory

This directory contains all the executable files to run FuegoBPM Designer. The most important one is the *fuegodesigner* executable that runs FuegoBPM Designer.

log directory

All FuegoBPM Designer log files are saved in this directory. The Fuego support team might require these log files while providing you support.

There are normally three files in this directory:

- **designerConsole.log** : these are the console output of the Designer program, these files are overwritten each time Designer is started.

- **modeler.log**: this is the application log. This file contains warnings, etc., generated by the application. This file is by default overwritten each time Designer starts. You can change the default to append to the file by selecting **File -> Preferences -> General window**. Clear the check mark from the **Overwrite the application log on start** check box.
- **Fuego_Designer_5.x_InstallLog**: the log file generated during Designer installation.

Chapter 5. FuegoBPM Enterprise Server

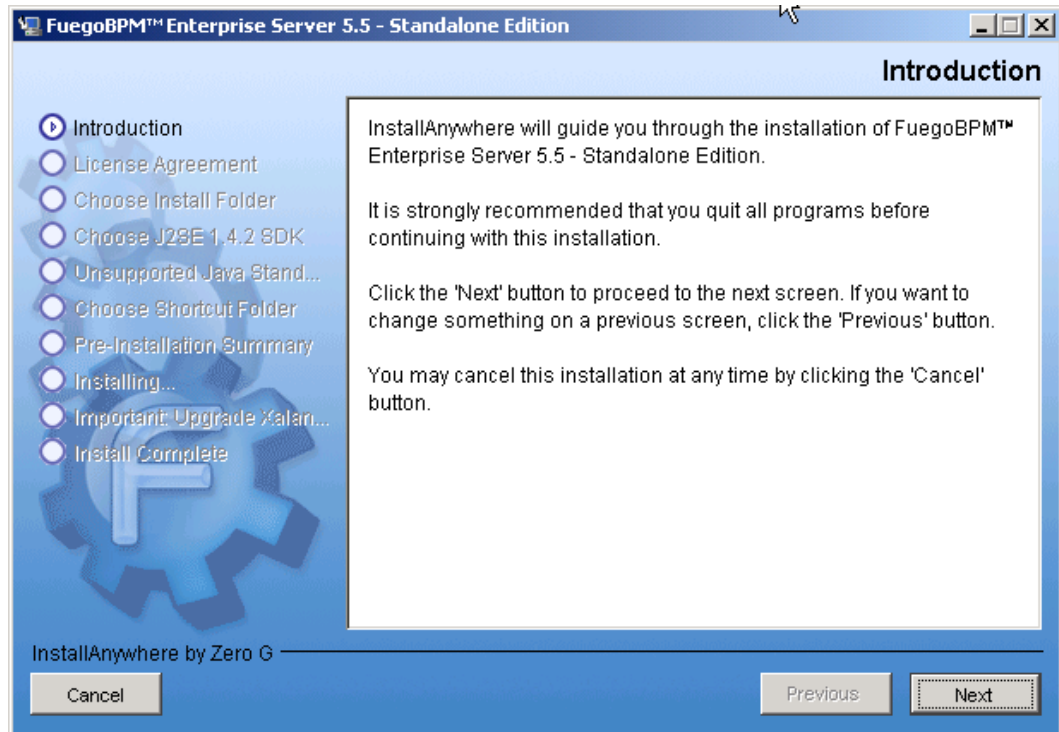
Installing FuegoBPM Enterprise Server

Once the installer is started, the FuegoBPM Enterprise Server installation page appears.

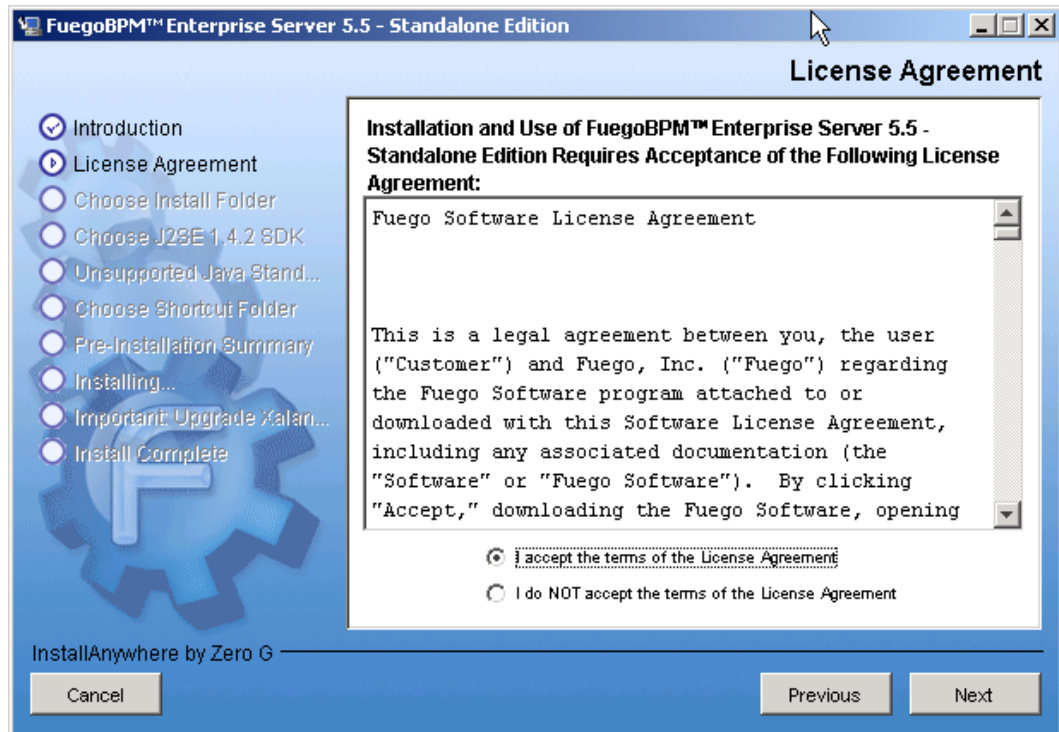
1. Select the installation default language and click **OK** to continue.



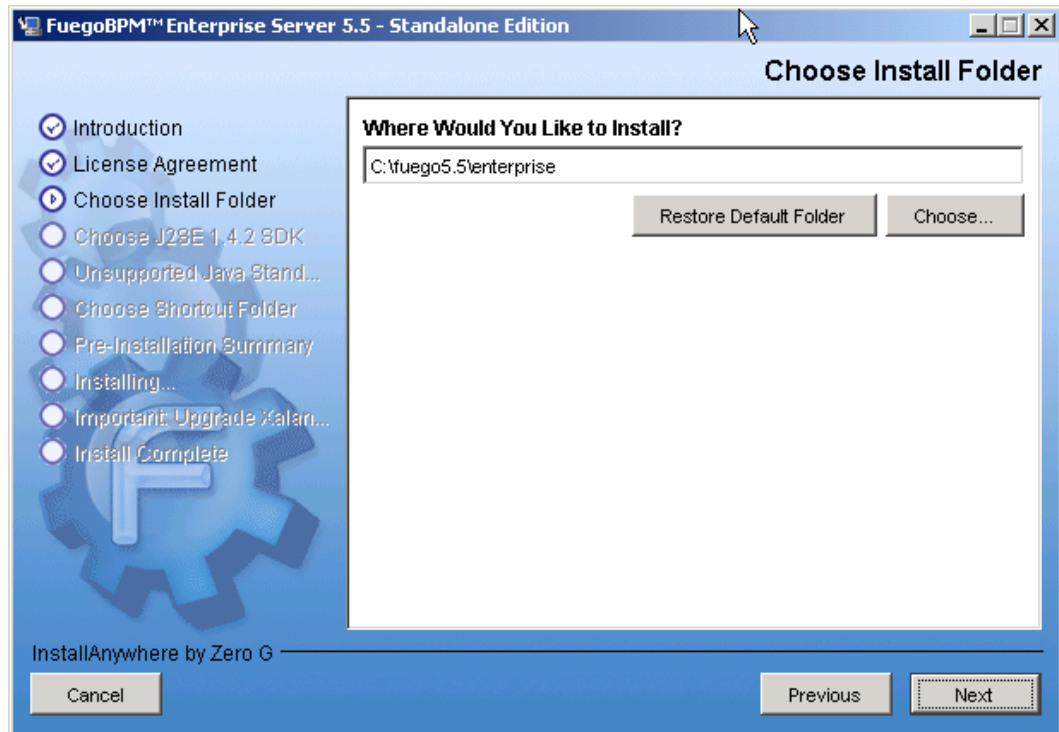
2. The installation introduction page appears. Click Next to continue.



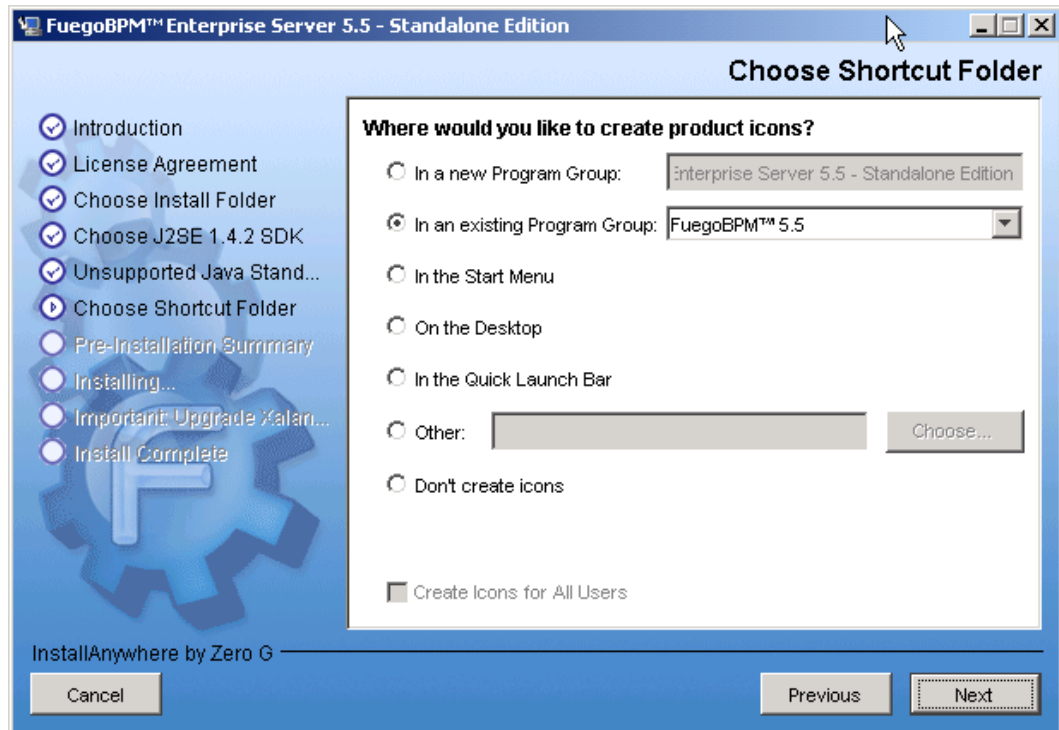
3. The FuegoBPM license agreement appears. Read the license agreement and select the **I accept...** radio button, if you agree to the license terms and then click **Next** to continue with installation. If you do not want to proceed with the installation, click the **I do NOT...** radio button and then **Cancel** to exit the installation.



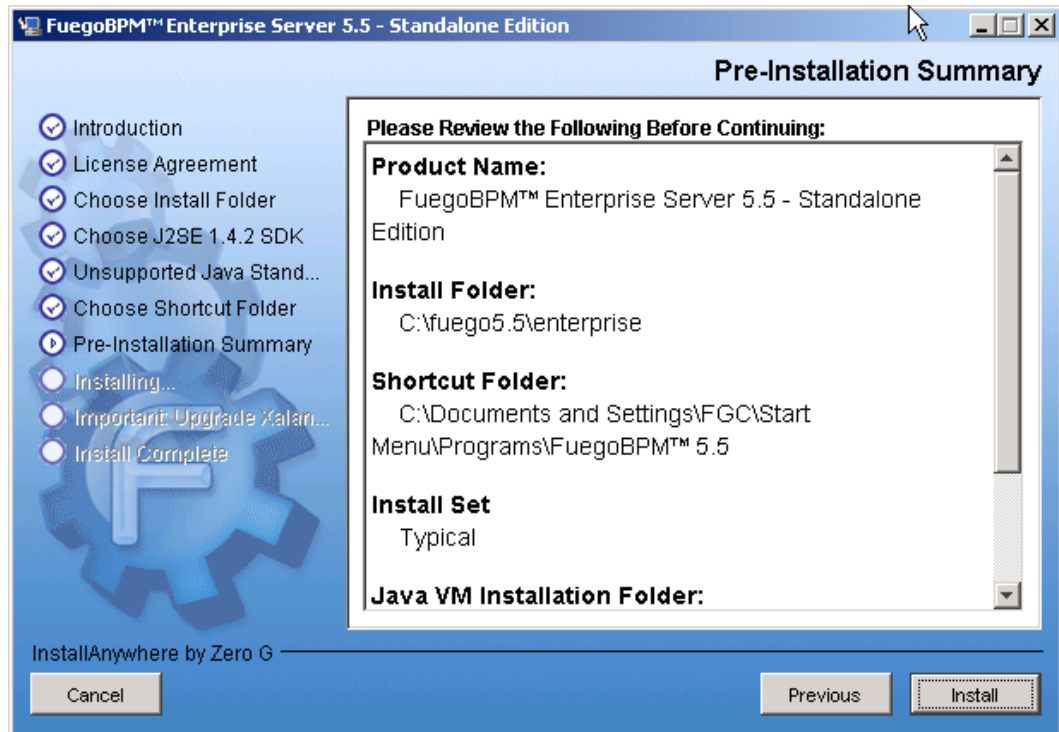
4. Next, you will need to select the folder where you want to install the FuegoBPM system. Accept the default installation location or browse to a different location then click **Next**.



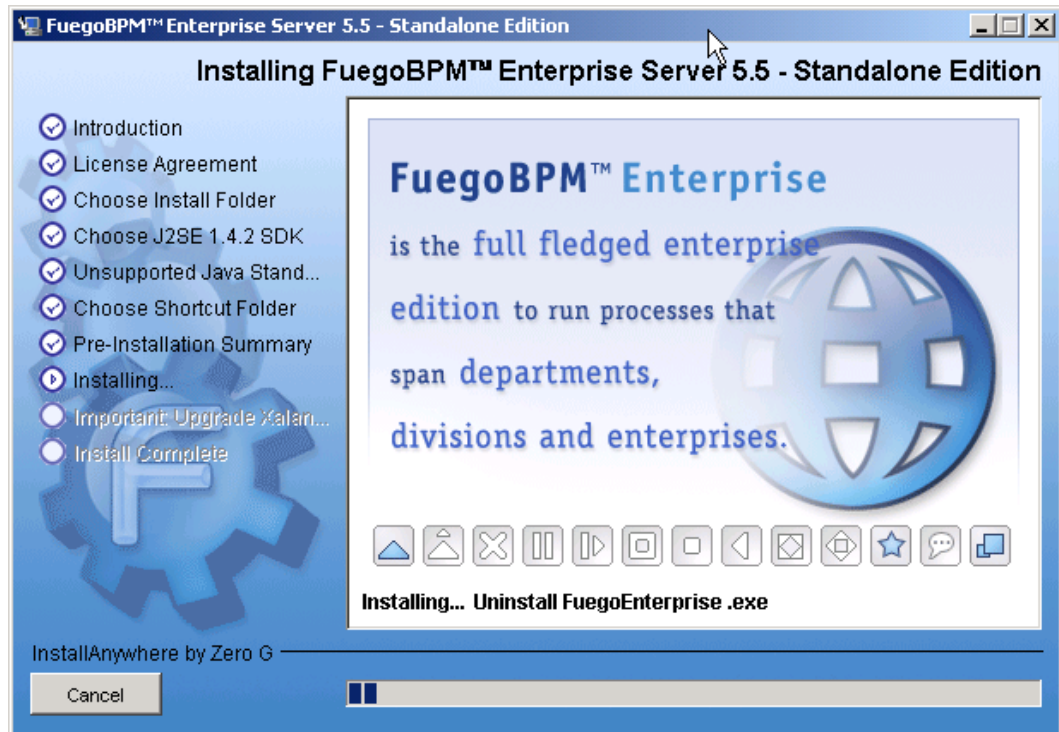
5. Choose a Shortcut folder. This is where the product icons will be stored. Click **Next** to continue.



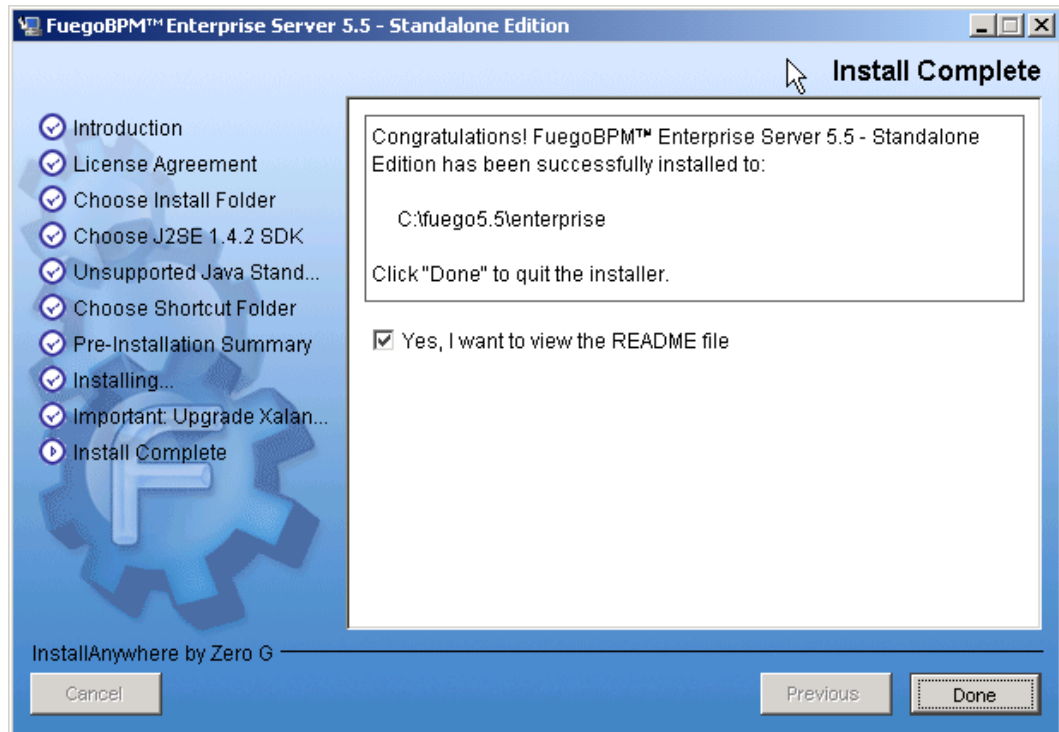
6. The installer displays a *pre-installation summary* of the options you have selected so far. If you need to change any of your options, click **Previous**; otherwise click **Next**.



7. The FuegoBPM installation begins.



8. When the installation is completed, the *Install Complete* dialog box will display. Click the check box **Yes, I want to view the README file**, if you want this file to be open in a browser and click **Done** to quit the installer.



9. If you select the check box to view the README file, it is opened in a browser. The file has links to find more information and documentation.



What to do next?

After installing FuegoBPM Enterprise Server, you should go to the FuegoBPM Enterprise Administration Center application and begin the implementation of your FuegoBPM, after installing the license key. The license key is asked to be installed the first time you run the FuegoBPM Enterprise Administration Center.

According to how you have decided to implement fuego, install the corresponding drivers and create the FuegoBPM Directory Interface (FDI) and FuegoBPM Engines using the Administration Center application. For further information, please refer to the System Administration Guide (SAG) or the Administration Center On-line Help.



Launching the Administration Center

FuegoBPM Enterprise Administration Center is the FuegoBPM application designed to help you administer your FuegoBPM implementation. The Administration Center also guides and helps you configure your FuegoBPM applications.

From the FuegoBPM Enterprise Administration Center you can:

- Generate service directories for your implementation
- Configure Web Application Server, Web Console, Work Portal, and Portal Console preferences
- Launch the Web Console, the Work Portal, the Portal Console and Archive Viewer
- Start and stop the Web Application Server
- Update FuegoBPM Enterprise with new Service Packs
- Display logged information

Launching the FuegoBPM Administration Center

Interactively

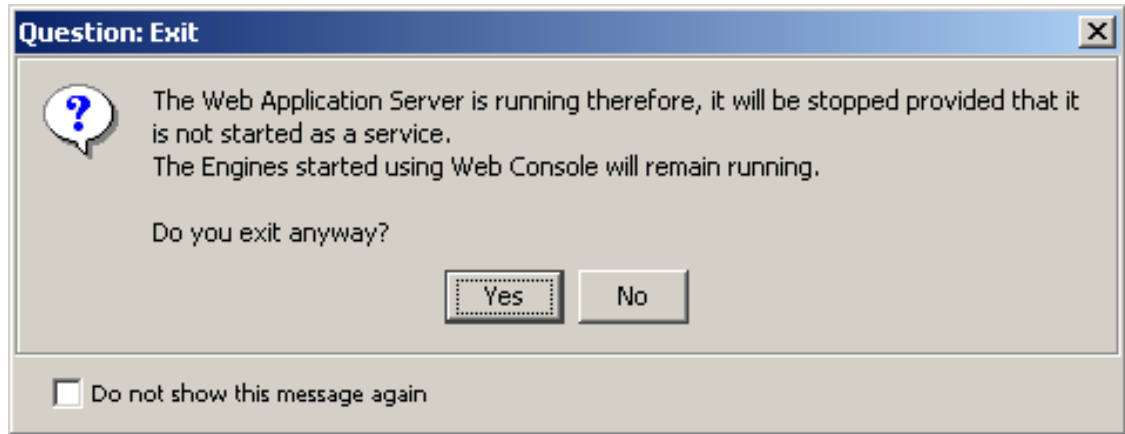
To start the FuegoBPM Administration Center interactively run the command *fuegoadmcenter* located in:

\$FUEGO/enterprise/bin/ or **\$FUEGO/j2ee/bin/**.

Exiting the Administration Center

When you exit the FuegoBPM Enterprise Administration Center, a dialog is displayed asking for confirmation in the case that the WAS is still running. You can disable this dialog to be displayed by checking the box in the dialog. If you want to restore it, go to

Configuration/Web Application Server, and uncheck the corresponding check box in the *Preferences* area of the window.



In background mode

If you don't want to run the FuegoBPM Administration Center to start the Fuego Web Application Server, you can start it in a batch mode.

In the directory: **\$FUEGO/enterprise/bin/** you will find (or **\$FUEGO/j2ee/bin/** :

- **\$FUEGO/enterprise/bin/startwebconsole**, to start the Fuego WAS,
- **\$FUEGO/enterprise/bin/stopwebconsole**, to stop the Fuego WAS.

Both *.sh* in any UNIX environment and *.bat* in Windows.

To run these commands you must fulfill the following Environment Variable pre-requisites:

- **CATALINA_HOME**: May point at your Catalina "build" directory.
- **JAVA_HOME**: Must point at your Java Development Kit installation.

FuegoBPM Enterprise: *About information*

Click on the **About** button at the right top corner of the FuegoBPM Enterprise Administration Center main window to:

- Display information about:
 - FuegoBPM Version, Service Pack, License information and Copyrights
 - Virtual Machine Properties
- Add a new license key



To add a license key

1. Click the **Enter License Key** button and browse the location of

the key file in the file system. Click **Open**.

2. The license is installed, and a dialog box appears telling you that the license was correctly installed.

Uninstalling FuegoBPM Enterprise Server

This chapter describes how to uninstall an existing FuegoBPM system. For best results, perform the following steps in the order listed below. Here are some considerations to keep in mind before uninstalling

Before uninstalling FuegoBPM Enterprise Server, you must stop the following applications:

- Web server, stop it from the Administration Center Application. If using another one than the default provided with FuegoBPM (for example, Resin, IIS), can be stopped from Windows Services panel.
- If it is running in a Windows environment and the Web Application Server has been installed as a service, the Uninstaller has to be executed as the Administrator user so the service is also uninstalled.
- JSP+ Servlet Engine, can be stopped from Windows Services panel.
- FuegoBPM Server, stop it from the Web Console.
- If the FuegoBPM Web Console is running as a service, unistall it from the Admin Center application.
- FuegoBPM Process Analyzer Server, stop it from the Web Console.

- COM Bridge (if running on a Windows platform), can be stopped from command line or from the Web Console.

Ideally, the Fuego administrator should uninstall the product because they will be most familiar with the FuegoBPM system and the surrounding technologies. On Windows platforms most of these running applications can be stopped from the Windows Services panel, which is found on the Control Panel in most cases. The other running applications should be stopped as stated in their documentation.

On UNIX platforms the applications can be stopped from the command line or through shell scripts provided with the FuegoBPM system.

Effect on third party resources

The third-party applications that were installed to run with the FuegoBPM components, are not affected when you uninstall FuegoBPM. Therefore, manual steps should be completed by the administrator as outlined below. This also takes place for files that have been modified after installation time.

RDBMS

The RDBMS schema that was created when you created the FuegoBPM Server, is not deleted from the database when you uninstall FuegoBPM. Therefore, you should drop the database from the Execution Console prior to uninstalling.

Warning



If you are reinstalling FuegoBPM and need to retain process information stored in the database, DO NOT drop the database. This is because you will either reuse it for the next version or you will want to keep it as a backup.

To drop a database

1. Go to the Web Console and select the category **Server** on the left.
2. Select the server you want to drop the database to, and click the link **Manage Database**.
3. Select only the check box **Drop database** and then **Apply**.

If you do not drop databases prior to uninstalling FuegoBPM, you will need to schemas manually. Consult your RDBMS documentation for directions.

directory services

Directory services are not uninstalled with FuegoBPM's un-installation procedure. All entries created through FuegoBPM or through the directory services console remain in the directory services.

Web server with JSP Servlet engine

The web server and JSP servlet engine are not affected by FuegoBPM's un-installation. Both should work as designed after you finish uninstalling. If needed, web application definitions may be removed by the administrator from Web Server or JSP Servlet engine organization file.

Running the Uninstaller

To begin uninstalling the FuegoBPM system ,

Do one of the following to launch the Uninstaller application:

- **On a Windows platform**

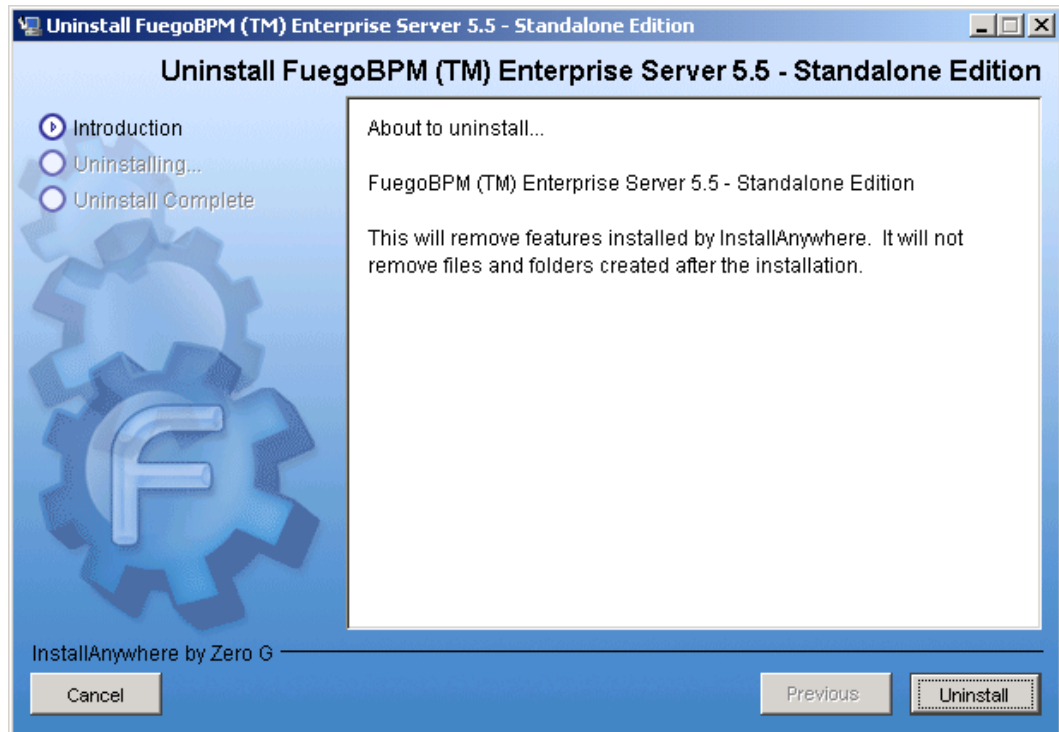
- Stop the following services o Fuego-serverName (where serverName is the name of your FuegoBPM Server).
 - FuegoBPM Process Analyzer Server
 - Web Server and JSP + Servlet Engine
 - COM Bridge
- Next, from the Windows Control Panel and select Add/Remove Programs.
- Select *FuegoBPM Enterprise 5.X* from the list of installed programs.
- Click Remove. The Uninstaller dialog box appears.

- **On a UNIX platform**

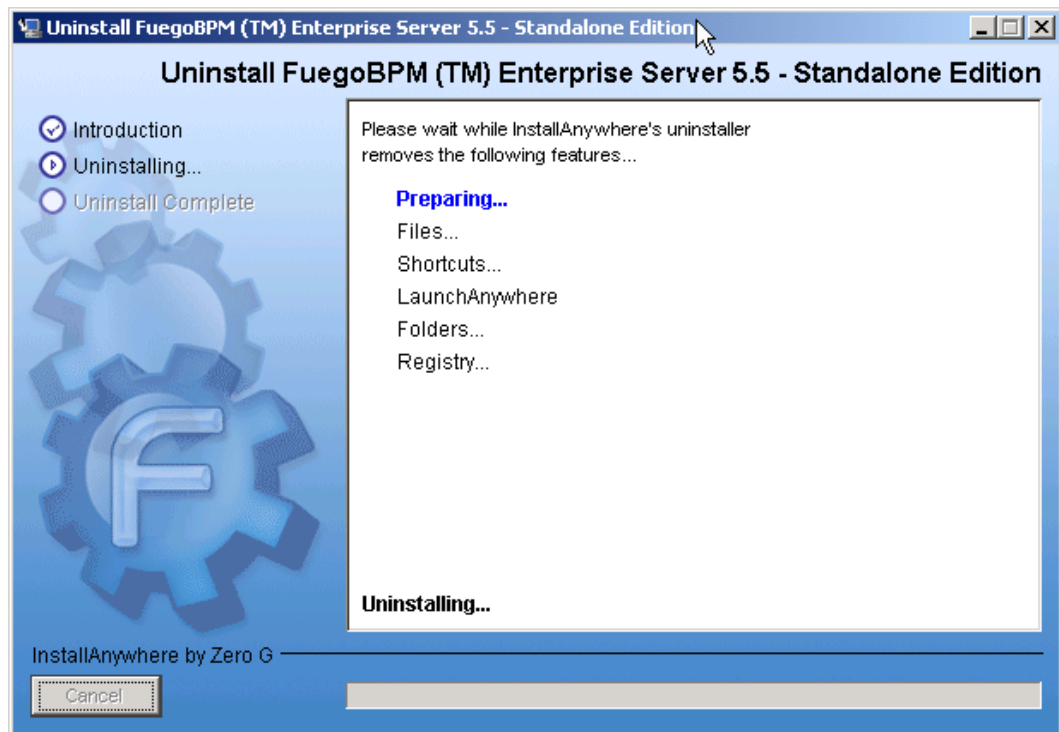
- Open a command line.
- Navigate to the UninstallerData directory under the FuegoBPM installation directory. For example, c:/Fuego5.X/uninstallerdata/
- Run the *UninstallFuegoEnterprise* script located in this directory.

The unistaller dialog will display:

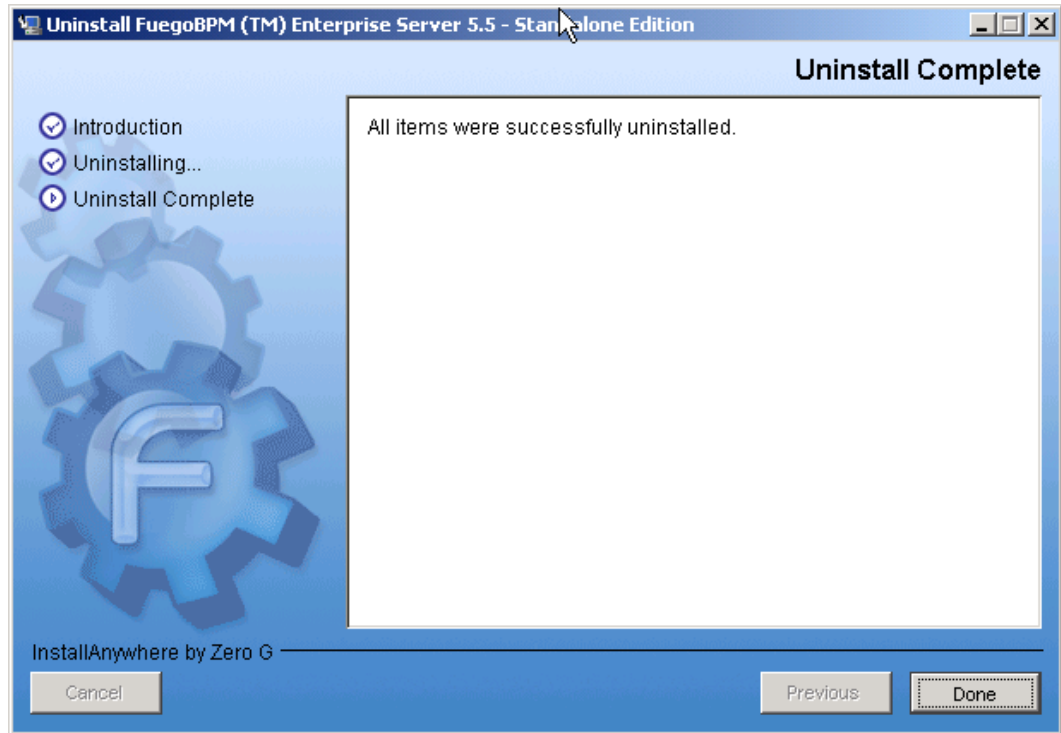
1. Click the **Uninstall** button to begin the uninstallation.



2. The uninstallation process begins.



3. Once it is completed, click **Done** to close the application. Remember to restart your computer to complete the uninstallation.



Troubleshooting the Installation of FuegoBPM Enterprise Server

Log Files

Log files are created automatically when you install, open, and run any of the FuegoBPM applications. The log files are stored in the log directory under the FuegoBPM Enterprise Server installation directory (for example, C:\fuego5\enterprise\log). Each application creates its own log file. The file can be opened in any text editor such as Wordpad or Notepad on Windows systems or using the FuegoBPM Log Viewer (only the FuegoBPM Server logs can be viewed with the FuegoBPM Log Viewer). The following table lists the file names and

the applications that use each log.

Note



The contents of the log directory depend on which applications you have installed on your machine. You may have more or fewer files than are listed below.

File Name	Application
<i>Fuego_Enterprise_5.X_InstallLog.log</i>	Installation Log. Gives information about installation steps and how they were executed.
<i>AdmCenterConsole.log</i>	Administration Center execution log.
<i>webConsole.log</i>	Web Console execution log.
<i>portal.log</i>	Work Portal Log file. The location of this file can be configured in the Administration Center , tab <i>Work Portal</i> .

Chapter 6. FuegoBPM Application Server Edition

Introduction

This chapter is intended to be a guide for setting up FuegoBPM to run on a J2EE environment. This includes configuring the server, creating required resources, packaging and deploying the applications. We first describe the configuration steps common to all application servers, and follow with application server-specific settings and procedures.

Assumptions and requirements

The assumptions and requirements are:

- The FuegoBPM Web Console does not run within the J2EE application server. As a result, two configurations are needed for the server database: one for managing the database from the Console, another for use at run time by the server. We will refer to them as management and runtime server database configurations, respectively. The management database configuration is a plain JDBC configuration, whereas the runtime configuration is a Remote JDBC configuration that delegates on a data source provided by the application server.
- FuegoBPM Application Server Edition has been properly configured, the directory provider has been set up and an server has been created.
- The FuegoBPM Work Portal web application must be deployed in the same application server than the FuegoBPM Server.
- Ant 1.6 or higher is installed.

Supported Platforms

The following J2EE platforms are supported by FuegoBPM.

- JBoss 3.2
- WebSphere 5.1
- Weblogic 8.1

Common Settings

Required FuegoBPM configurations

All the needed configurations are created by the wizard when the Server is created.

The server database configuration is required in the second step, and be modified later by clicking the **Edit server database configuration** link in the **Basic Configuration** tab.

Remote configurations to access the server runtime database and the FDI database through the Application server can be visualized and changed if required in the **Application Server** tab.

Required Application Server Resources

The following are the resources you must have configured in your Application Server in order to successfully deploy FuegoBPM Application Server Edition.

DataSources

You will need two DataSources configured. One for the FuegoBPM Application Server Edition Server and another one for the FuegoBPM Directory Service. Both Datasources must be XA.

Vendor specific considerations

Websphere

- Make sure that Container managed persistence property is not checked when creating the DataSource

JMS TOPIC

You will need a JMS Topic Connection Factory and a JMS Topic. This topic should not be persistent.

Vendor specific considerations

JBoss

- The UIL2 Connection Factory creates 2 threads for each open connection, this is costly for the Application Server, so it is recommended to use the JVM Connection Factory.

Websphere

- The Topic Connection Factory must have 'Port' attribute set as 'QUEUED'

JMS QUEUE

You will need a JMS Queue Connection Factory and a JMS Queue. This queue must be persistent.

Vendor specific considerations

JBoss

- You can use the same connection factory defined for the topic.

Websphere

- You will need to configure a Listener Port for the queue. This port


Optional Resources

You may optionally have defined a resource to send mails, and this resource can be referenced from the server properties in the FuegoBPM WebConsole in order to FuegoBPM to send all mail through the Application Server mail service.

Creating the EAR builder scripts

The servers and project EAR files can be created directly from the FuegoBPM WebConsole by going to **J2EE application server files (EARs, WARs)** in **Basic configuration** of the server.)

Note

 When creating the EAR files with an ant script instead of from the Web Console you should be aware of the following: To keep compatibility with the FuegoBPM Deployer, the *displayName* and the *destfile* should follow the same naming convention used by the webconsole. The FuegoBPM Deployer uses those properties when managing application in the J2EE Application Server.

EAR files for deployment on J2EE application servers are created via Ant scripts. The following is an example of what such a script would look like.

Each application server requires that the EAR files have a certain structure, which is controlled by the parameters for *j2ee:buildear* Ant task. We will go into more detail on how to set these values in the next few sections.

```
<?xml version="1.0"?>
<project xmlns:j2ee="antlib:fuego.tools.ant.j2ee">
  <target name="create-ear">
    <j2ee:buildear
      fuegobasedir="..."
      destfile="..."
      displayName="..."
      workdir="..."
      directoryfile="..."
      engineid="..."
      includelibs="true | false">
      ... contents ...
    </j2ee:buildear>
  </target>
</project>
```

The following table describes the required parameters.

Parameter	Description
fuegobasedir	the path of the directory where FuegoBPM is installed
destfile	the name of the EAR file to create
displayName	the logical name for the application
workdir	the path to a folder to store temporary files
directoryfile	the path to the directory.properties file
engineid	the name of the server where the process is deployed
includelibs	whether to include shared libraries within the EAR file
contents	what to include in the EAR file. See next table for a list of possible options

The following table describes possible contents.

Content	Description
j2ee:engine	the server implementation should be included in the EAR file
j2ee:portal	the Work Portal should be included in the EAR file
j2ee:project all="true"	all projects deployed in the server should be included in the EAR file
j2ee:project name=". . ."	the specified project should be included in the EAR file. The name of the project can be retrieved from the Web Console, as shown in Figure 3 on the next page

The path to FuegoBPM's Ant task implementation should be passed when running Ant:

```
ant -lib $FUEGO/lib/tools/ant target
```

where \$FUEGO is the path to the folder where FuegoBPM is installed.

Chapter 7. FuegoBPM Applications non interactive installation

Steps for non interactive installation

To install any FuegoBPM application you can run the installer and pass as an argument an **installer.properties** file that contains all the required information for installation.

The *installer.properties* file has to contain the following:

```
INSTALLER_UI=silent
USER_INSTALL_DIR=/tmp
USER_SHORTCUTS=/home/administrator
```

For example you can run the FuegoBPM Studio installer:

```
./studio-6.5-sp6.bin -f installer.properties
```