
PeopleSoft Enterprise Student Administration Integration Pack 9.0 Installation Guide

October 2008

PeopleSoft Enterprise Student Administration Integration Pack 9.0
Installation Guide
SKU hr9saipdocr1_isaip
Copyright © 2008, Oracle. All rights reserved.

Trademark Notice

Oracle is a registered trademark of Oracle Corporation and/or its affiliates. Other names may be trademarks of their respective owners.

License Restrictions Warranty/Consequential Damages Disclaimer

This software and related documentation are provided under a license agreement containing restrictions on use and disclosure and are protected by intellectual property laws. Except as expressly permitted in your license agreement or allowed by law, you may not use, copy, reproduce, translate, broadcast, modify, license, transmit, distribute, exhibit, perform, publish or display any part, in any form, or by any means. Reverse engineering, disassembly, or decompilation of this software, unless required by law for interoperability, is prohibited.

Warranty Disclaimer

The information contained herein is subject to change without notice and is not warranted to be error-free. If you find any errors, please report them to us in writing.

Restricted Rights Notice

If this software or related documentation is delivered to the U.S. Government or anyone licensing it on behalf of the U.S. Government, the following notice is applicable:

U.S. GOVERNMENT RIGHTS

Programs, software, databases, and related documentation and technical data delivered to U.S. Government customers are “commercial computer software” or “commercial technical data” pursuant to the applicable Federal Acquisition Regulation and agency-specific supplemental regulations. As such, the use, duplication, disclosure, modification, and adaptation shall be subject to the restrictions and license terms set forth in the applicable Government contract, and, to the extent applicable by the terms of the Government contract, the additional rights set forth in FAR 52.227-19, Commercial Computer Software License (December 2007). Oracle USA, Inc., 500 Oracle Parkway, Redwood City, CA 94065.

Hazardous Applications Notice

This software is developed for general use in a variety of information management applications. It is not developed or intended for use in any inherently dangerous applications, including applications which may create a risk of personal injury. If you use this software in dangerous applications, then you shall be responsible to take all appropriate fail-safe, backup, redundancy and other measures to ensure the safe use of this software. Oracle Corporation and its affiliates disclaim any liability for any damages caused by use of this software in dangerous applications.

Third Party Content, Products, and Services Disclaimer

This software and documentation may provide access to or information on content, products and services from third parties. Oracle Corporation and its affiliates are not responsible for and expressly disclaim all warranties of any kind with respect to third party content, products and services. Oracle Corporation and its affiliates will not be responsible for any loss, costs, or damages incurred due to your access to or use of third party content, products or services.

Open Source Disclosure

Oracle takes no responsibility for its use or distribution of any open source or shareware software or documentation and disclaims any and all liability or damages resulting from use of said software or documentation. The following open source software may be used in Oracle's PeopleSoft Enterprise products and the following disclaimers are provided:

Apache Software Foundation

This product includes software developed by the Apache Software Foundation (<http://www.apache.org/>). Copyright © 2000-2003. The Apache Software Foundation. All rights reserved. Licensed under the Apache License, Version 2.0 (the "License"); you may not use this file except in compliance with the License. You may obtain a copy of the License at <http://www.apache.org/licenses/LICENSE-2.0>.

Unless required by applicable law or agreed to in writing, software distributed under the License is distributed on an "AS IS" BASIS, WITHOUT WARRANTIES OR CONDITIONS OF ANY KIND, either express or implied. See the License for the specific language governing permissions and limitations under the License.

OpenSSL

Copyright © 1998-2005 The OpenSSL Project. All rights reserved.

This product includes software developed by the OpenSSL Project for use in the OpenSSL Toolkit (<http://www.openssl.org/>).

THIS SOFTWARE IS PROVIDED BY THE OpenSSL PROJECT "AS IS" AND ANY EXPRESSED OR IMPLIED WARRANTIES, INCLUDING, BUT NOT LIMITED TO, THE IMPLIED WARRANTIES OF MERCHANTABILITY AND FITNESS FOR A PARTICULAR PURPOSE ARE DISCLAIMED. IN NO EVENT SHALL THE OpenSSL PROJECT OR ITS CONTRIBUTORS BE LIABLE FOR ANY DIRECT, INDIRECT, INCIDENTAL, SPECIAL, EXEMPLARY, OR CONSEQUENTIAL DAMAGES (INCLUDING, BUT NOT LIMITED TO, PROCUREMENT OF SUBSTITUTE GOODS OR SERVICES; LOSS OF USE, DATA, OR PROFITS; OR BUSINESS INTERRUPTION) HOWEVER CAUSED AND ON ANY THEORY OF LIABILITY, WHETHER IN CONTRACT, STRICT LIABILITY, OR TORT (INCLUDING NEGLIGENCE OR OTHERWISE) ARISING IN ANY WAY OUT OF THE USE OF THIS SOFTWARE, EVEN IF ADVISED OF THE POSSIBILITY OF SUCH DAMAGE.

Helma Project

Copyright © 1999-2004 Helma Project. All rights reserved. THIS SOFTWARE IS PROVIDED "AS IS" AND ANY EXPRESSED OR IMPLIED WARRANTIES, INCLUDING, BUT NOT LIMITED TO, THE IMPLIED WARRANTIES OF MERCHANTABILITY AND FITNESS FOR A PARTICULAR PURPOSE ARE DISCLAIMED. IN NO EVENT SHALL THE HELMA PROJECT OR ITS CONTRIBUTORS BE LIABLE FOR ANY DIRECT, INDIRECT, INCIDENTAL, SPECIAL, EXEMPLARY, OR CONSEQUENTIAL DAMAGES (INCLUDING, BUT NOT LIMITED TO, PROCUREMENT OF SUBSTITUTE GOODS OR SERVICES; LOSS OF USE, DATA, OR PROFITS; OR BUSINESS INTERRUPTION) HOWEVER CAUSED AND ON ANY THEORY OF LIABILITY, WHETHER IN CONTRACT, STRICT LIABILITY, OR TORT (INCLUDING NEGLIGENCE OR OTHERWISE) ARISING IN ANY WAY OUT OF THE USE OF THIS SOFTWARE, EVEN IF ADVISED OF THE POSSIBILITY OF SUCH DAMAGE.

Helma includes third party software released under different specific license terms. See the licenses directory in the Helma distribution for a list of these license.

Sarissa

Copyright © 2004 Manos Batsis.

This library is free software; you can redistribute it and/or modify it under the terms of the GNU Lesser General Public License as published by the Free Software Foundation; either version 2.1 of the License, or (at your option) any later version.

This library is distributed in the hope that it will be useful, but WITHOUT ANY WARRANTY; without even the implied warranty of MERCHANTABILITY or FITNESS FOR A PARTICULAR PURPOSE. See the GNU Lesser General Public License for more details.

You should have received a copy of the GNU Lesser General Public License along with this library; if not, write to the Free Software Foundation, Inc., 59 Temple Place, Suite 330, Boston, MA 02111-1307 USA.

ICU

ICU License - ICU 1.8.1 and later COPYRIGHT AND PERMISSION NOTICE Copyright © 1995-2003 International Business Machines Corporation and others. All rights reserved.

Permission is hereby granted, free of charge, to any person obtaining a copy of this software and associated documentation files (the “Software”), to deal in the Software without restriction, including without limitation the rights to use, copy, modify, merge, publish, distribute, and/or sell copies of the Software, and to permit persons to whom the Software is furnished to do so, provided that the above copyright notice(s) and this permission notice appear in all copies of the Software and that both the above copyright notice(s) and this permission notice appear in supporting documentation. THE SOFTWARE IS PROVIDED “AS IS,” WITHOUT WARRANTY OF ANY KIND, EXPRESS OR IMPLIED, INCLUDING BUT NOT LIMITED TO THE WARRANTIES OF MERCHANTABILITY, FITNESS FOR A PARTICULAR PURPOSE AND NON-INFRINGEMENT OF THIRD PARTY RIGHTS. IN NO EVENT SHALL THE COPYRIGHT HOLDER OR HOLDERS INCLUDED IN THIS NOTICE BE LIABLE FOR ANY CLAIM, OR ANY SPECIAL INDIRECT OR CONSEQUENTIAL DAMAGES, OR ANY DAMAGES WHATSOEVER RESULTING FROM LOSS OF USE, DATA OR PROFITS, WHETHER IN AN ACTION OF CONTRACT, NEGLIGENCE OR OTHER TORTIOUS ACTION, ARISING OUT OF OR IN CONNECTION WITH THE USE OR PERFORMANCE OF THIS SOFTWARE. Except as contained in this notice, the name of a copyright holder shall not be used in advertising or otherwise to promote the sale, use or other dealings in this Software without prior written authorization of the copyright holder.

All trademarks and registered trademarks mentioned herein are the property of their respective owners.

Sun’s JAXB Implementation – JSDK 1.5 relaxngDatatype.jar 1.0 License

Copyright © 2001, Thai Open Source Software Center Ltd, Sun Microsystems. All rights reserved.

THIS SOFTWARE IS PROVIDED BY THE COPYRIGHT HOLDERS AND CONTRIBUTORS “AS IS” AND ANY EXPRESS OR IMPLIED WARRANTIES, INCLUDING, BUT NOT LIMITED TO, THE IMPLIED WARRANTIES OF MERCHANTABILITY AND FITNESS FOR A PARTICULAR PURPOSE ARE DISCLAIMED. IN NO EVENT SHALL THE REGENTS OR CONTRIBUTORS BE LIABLE FOR ANY DIRECT, INDIRECT, INCIDENTAL, SPECIAL, EXEMPLARY, OR CONSEQUENTIAL DAMAGES (INCLUDING, BUT NOT LIMITED TO, PROCUREMENT OF SUBSTITUTE GOODS OR SERVICES; LOSS OF USE, DATA, OR PROFITS; OR BUSINESS INTERRUPTION) HOWEVER CAUSED AND ON ANY THEORY OF LIABILITY, WHETHER IN CONTRACT, STRICT LIABILITY, OR TORT (INCLUDING NEGLIGENCE OR OTHERWISE) ARISING IN ANY WAY OUT OF THE USE OF THIS SOFTWARE, EVEN IF ADVISED OF THE POSSIBILITY OF SUCH DAMAGE.

W3C IPR SOFTWARE NOTICE

Copyright © 2000 World Wide Web Consortium, (Massachusetts Institute of Technology, Institut National de Recherche en Informatique et en Automatique, Keio University). All Rights Reserved.

Note: The original version of the W3C Software Copyright Notice and License could be found at <http://www.w3.org/Consortium/Legal/copyright-software-19980720>.

THIS SOFTWARE AND DOCUMENTATION IS PROVIDED “AS IS,” AND COPYRIGHT HOLDERS MAKE NO REPRESENTATIONS OR WARRANTIES, EXPRESS OR IMPLIED, INCLUDING BUT NOT LIMITED TO, WARRANTIES OF MERCHANTABILITY OR FITNESS FOR ANY PARTICULAR PURPOSE OR THAT THE USE OF THE SOFTWARE OR DOCUMENTATION WILL NOT INFRINGE ANY THIRD PARTY PATENTS, COPYRIGHTS, TRADEMARKS OR OTHER RIGHTS. COPYRIGHT HOLDERS WILL NOT BE LIABLE FOR ANY DIRECT, INDIRECT, SPECIAL OR CONSEQUENTIAL DAMAGES ARISING OUT OF ANY USE OF THE SOFTWARE OR DOCUMENTATION.

Contents

Preface

About this Documentation.....vii

Understanding this Documentation.....vii

Audience.....viii

Typographical Conventions and Visual Cues.....viii

Products.....ix

Comments and Suggestions.....x

Chapter 1

Installing and Configuring Student Administration Integration Pack.....1

Prerequisites.....1

Installing Student Administration Integration Pack from the Virtual CD.....2

Installing Student Administration Integration Pack, Multilingual Portion.....3

Copying the SAIP Project into the Student Administration Database.....4

Building the SAIP_V1_MASTER Project.....4

Installing Additional Database Changes Using PeopleSoft Data Mover.....5

Copying the SAIP Multilingual Project into the Student Administration Database.....6

Setting Up Installation Options.....6

Applying the Core Overlaps Project.....7

Running Conversion Programs Using PeopleSoft Application Engine.....8

Adjusting Version Numbers and Running Audit Reports on the Student Administration Database.....8

Granting Security to Student Administration Integration Pack Objects.....9

Deactivating Student Administration Integration Pack Service Operations.....12

Deactivating Student Administration Integration Pack Service Routings.....16

Index21

About this Documentation

This preface discusses:

- Understanding this Documentation
- Audience
- Typographical Conventions and Visual Cues
- Products
- Comments and Suggestions

Understanding this Documentation

This documentation provides pre-installation considerations and installation notes specific to the Oracle's PeopleSoft Enterprise Student Administration Integration Pack application. Installation notes are tips about a specific issue in a product whereas installation instructions are step-by-step instructions on how to install the PeopleSoft Student Administration Integration Pack product.

Important! This documentation is not a standalone installation guide. It does not contain installation instructions for Oracle's PeopleSoft Enterprise PeopleTools, or for the Oracle's PeopleSoft Enterprise Student Administration product application. When installing PeopleSoft Student Administration Integration Pack, be sure to use both the PeopleSoft PeopleTools installation guide for your database platform, the PeopleSoft Student Administration installation instructions, and this supplemental PeopleSoft Student Administration Integration Pack installation guide. The installation instructions for PeopleSoft Student Administration can be found in the installation guide for Oracle's PeopleSoft Enterprise HRMS and Campus Solutions.

Note. Before proceeding with your installation, check PeopleSoft Customer Connection to ensure that you have the latest version of this installation guide for the correct release of the PeopleSoft product that you are installing.

See Also

Enterprise PeopleTools 8.49 Installation <for your database platform>, Oracle's PeopleSoft Customer Connection (Site Index, installation guides and notes, Enterprise, PeopleTools)

PeopleSoft Enterprise HRMS and Campus Solutions 9.0 Applications Supplemental Installation Guide, Oracle's PeopleSoft Customer Connection (Site Index, installation guides and notes, Enterprise, HRMS)

Audience

This documentation is written for the individuals responsible for installing and administering the PeopleSoft environment. This documentation assumes that you have a basic understanding of the PeopleSoft system. One of the most important components in the installation and maintenance of your PeopleSoft system is your on-site expertise.

You should be familiar with your operating environment and RDBMS and have the necessary skills to support that environment. You should also have a working knowledge of:

- SQL and SQL command syntax.
- PeopleSoft system navigation.
- PeopleSoft windows, menus, and pages, and how to modify them.
- Microsoft Windows.

Oracle recommends that you complete training, particularly the PeopleSoft Server Administration and Installation course, before performing an installation.

See PeopleSoft Customer Connection (Oracle University).

Typographical Conventions and Visual Cues

To help you locate and understand information easily, the following conventions are used in this documentation:

Convention	Description
Monospace	Indicates a PeopleCode program or other code, such as scripts that you run during the install. Monospace is also used for messages that you may receive during the install process.
<i>Italics</i>	Indicates field values, emphasis, and book-length publication titles. Italics is also used to refer to words as words or letters as letters, as in the following example: Enter the letter <i>O</i> .
Initial Caps	Field names, commands, and processes are represented as they appear on the window, menu, or page.
lower case	File or directory names are represented in lower case, unless they appear otherwise on the interface.
Menu, Page	A comma (,) between menu and page references indicates that the page exists on the menu. For example, “Select Use, Process Definitions” indicates that you can select the Process Definitions page from the Use menu.

Convention	Description
Cross-references	<p>Cross-references that begin with <i>See</i> refer you to additional documentation that will help you implement the task at hand. We highly recommend that you reference this documentation.</p> <p>Cross-references under the heading <i>See Also</i> refer you to additional documentation that has more information regarding the subject.</p>
“ ” (quotation marks)	Indicate chapter titles in cross-references and words that are used differently from their intended meaning.
Note. Note text.	Text that begins with <i>Note.</i> indicates information that you should pay particular attention to as you work with your PeopleSoft system.
Important! Important note text.	A note that begins with <i>Important!</i> is crucial and includes information about what you need to do for the system to function properly.
Warning! Warning text.	A note that begins with <i>Warning!</i> contains critical configuration information or implementation considerations; for example, if there is a chance of losing or corrupting data. Pay close attention to warning messages.

Products

This documentation may refer to these products and product families:

- Oracle Application Server
- Oracle BPEL Process Manager
- Oracle Enterprise Manager
- Oracle’s PeopleSoft Application Designer
- Oracle’s PeopleSoft Change Assistant
- Oracle’s PeopleSoft Change Impact Analyzer
- Oracle’s PeopleSoft Data Mover
- Oracle’s PeopleSoft Process Scheduler
- Oracle’s PeopleSoft Pure Internet Architecture
- Oracle’s PeopleSoft Enterprise Campus Solutions
- Oracle’s PeopleSoft Enterprise Customer Relationship Management
- Oracle’s PeopleSoft Enterprise Financial Management
- Oracle’s PeopleSoft Enterprise Human Resources Management Systems
- Oracle’s PeopleSoft Enterprise Learning Management
- Oracle’s PeopleSoft Enterprise Pay/Bill Management
- Oracle’s PeopleSoft Enterprise PeopleTools
- Oracle’s PeopleSoft Enterprise Performance Management

- Oracle's PeopleSoft Enterprise Portal Solutions
- Oracle's PeopleSoft Enterprise Staffing Front Office
- Oracle's PeopleSoft Enterprise Supply Chain Management

See <http://www.oracle.com/applications/peoplesoft-enterprise.html> for a list of PeopleSoft Enterprise products.

Comments and Suggestions

Your comments are important to us. We encourage you to tell us what you like, or what you would like changed about our documentation, PeopleBooks, and other Oracle reference and training materials. Please send your suggestions to:

PSOFT-Infodev_US@oracle.com

While we cannot guarantee to answer every email message, we will pay careful attention to your comments and suggestions. We are always improving our product communications for you.

CHAPTER 1

Installing and Configuring Student Administration Integration Pack

This chapter discusses:

- Prerequisites
- Installing Student Administration Integration Pack from the Virtual CD
- Installing Student Administration Integration Pack, Multilingual Portion
- Copying the SAIP Project into the Student Administration Database
- Building the SAIP_V1_MASTER Project
- Installing Additional Database Changes Using PeopleSoft Data Mover
- Copying the SAIP Multilingual Project into the Student Administration Database
- Setting Up Installation Options
- Applying the Core Overlaps Project
- Running Conversion Programs Using PeopleSoft Application Engine
- Adjusting Version Numbers and Running Audit Reports on the Student Administration Database
- Granting Security to Student Administration Integration Pack Objects
- Deactivating Student Administration Integration Pack Service Operations
- Deactivating Student Administration Integration Pack Service Routings

Prerequisites

Consider the following points prior to installing Student Administration Integration Pack (SAIP):

- You must be running PeopleSoft PeopleTools 8.49 or higher.
- You must be running PeopleSoft Student Administration 9.0.
- If you are installing languages other than English, you need to install the multilingual version of PeopleSoft Student Administration 9.0.
- You must have the following resolutions, and any prerequisites listed for those resolutions, in the following order:

Note. If you are doing a multilingual installation, be sure to obtain the multilingual versions.

- a. HCM 9.0 Maintenance Pack #4
- b. Campus Solutions 9.0 Bundles #7 and #8
- Be sure to run audit reports to ensure that your target databases are clean before you start the installation process.
- You must have licensed the Student Administration Integration Pack.

The Student Administration Integration Pack is a new, separately licensed product that functions in conjunction with your PeopleSoft Student Administration 9.0 application. You must have licensed the SAIP in order to run it in your environment. Note that the license code for the Student Administration Integration Pack is RDBMS-specific.

Note. If you have downloaded Campus Solutions 9.0 Bundle #9 (or the multilingual version), you should not install the Student Administration Integration Pack from CD or electronic download. The objects included in the SAIP are already present in your system and available for use with the purchase of an SAIP license. Installing SAIP from the CD after the application of Campus Solutions 9.0 Bundle #9 (multilingual) to your PeopleSoft Student Administration implementation risks returning SAIP and PeopleSoft Student Administration objects to an earlier version.

Task 1-1: Installing Student Administration Integration Pack from the Virtual CD

To install the Student Administration Integration Pack (SAIP) product:

1. Run SETUP.EXE from the SAIP CD directory.
The installation screen appears. Click Next.
2. On the License Agreement screen, read the license agreement carefully and select the option indicating you accept the terms of agreement.
Click Next.
3. Enter the license code for Student Administration Integration Pack, and click Next.
The license code is specific to the database platform for your installation, and is not the same as the license code for PeopleSoft Student Administration 9.0.
See Prerequisites.
4. Select the PeopleSoft Component that you would like to be installed, and click Next.
5. Specify the directory in which you want to install the application, and click Next.
The directory you select should be the one in which you installed PeopleSoft Enterprise Student Administration 9.0. If you need to change the drive letter or directory name, click the Browse button.
The available product installation window appears.
6. Select the PeopleSoft Student Administration Integration Pack check box if it is not already checked, and click Next.
7. Review your selections on the next screen.
If you need to make any changes, click Back to return to the main screen.
8. Click Next to begin the installation.

Note. This documentation does not provide detailed information about the installation of application projects. For more information about those details, see the PeopleSoft PeopleTools documentation.

After you complete the PeopleSoft SAIP 9.0 CD installation process, the SAIP_V1_MASTER project is located in the *PS_HOME*\Projects directory, where *PS_HOME* is the installation directory for PeopleSoft PeopleTools.

The PeopleSoft SAIP 9.0 CD installation also includes the reference documentation *PeopleSoft Enterprise Student Administration Pack*. You can find this PeopleBook in the *PS_HOME*\doc directory.

Task 1-2: Installing Student Administration Integration Pack, Multilingual Portion

You only need to perform this task if you are using the Dutch language.

To install the Student Administration Integration Pack (SAIP) product, Multilingual portion:

1. Run SETUP.EXE from the SAIP multilingual CD directory.
The installation screen appears. Click Next.
2. On the License Agreement screen, read the license agreement carefully and select the option indicating you accept the terms of agreement.
Click Next.
3. Select the database platform where your existing HRCS 9.0 Applications have been installed.
Click Next.
4. For certain database platforms, you will prompted to specify Unicode or Non-Unicode.
Select the option you require and click Next.
5. Select the PeopleSoft Component that you would like to be installed, and click Next.
6. Specify the directory in which you want to install the application, and click Next.
The directory you select should be the one in which you installed PeopleSoft Enterprise Student Administration 9.0 Multilingual. If you need to change the drive letter or directory name, click the Browse button.
7. Select the language you wish to install and click Next.
8. Review your selections on the next screen.
If you need to make any changes, click Back to return to the main screen.
9. Click Next to begin the installation.

After you complete the PeopleSoft SAIP 9.0 multilingual CD installation process, the SAIP_V1_MASTER_ML project is located in the *PS_HOME*\Projects directory, where *PS_HOME* is the installation directory for PeopleSoft PeopleTools.

Task 1-3: Copying the SAIP Project into the Student Administration Database

To copy the SAIP_V1_MASTER project into the PeopleSoft Student Administration 9.0 database:

1. Open PeopleSoft Application Designer and sign in to the PeopleSoft Student Administration 9.0 database in two-tier mode.
2. Select Tools, Copy Project, From File.
3. For Import Directory, browse to folder *PS_HOME\Projects*.
4. Select the SAIP_V1_MASTER project, and click Select.
5. Click the Options button and ensure that English and Common are selected in the Copy options tab.
6. Click OK.
7. Click Select All.
8. Click Copy.
9. Select Tools, Options, and Validate.
10. Select the Validate project integrity check box.
11. Clear the remaining check boxes.
12. Click OK.
13. Select Tools, Validate Project.

When validating the project, the system might prompt you to remove objects that are not valid from the project. You should select No at this prompt (leave invalid objects in the project).

Note. You may receive numerous Invalid Message Catalog Entries messages at this point. You can ignore these messages because the message catalog entries will be added to the database in a subsequent step.

Task 1-4: Building the SAIP_V1_MASTER Project

In this task, you synchronize the physical dataset structure for the tables in the SAIP_V1_MASTER project.

To build the SAIP_V1_MASTER project:

1. In Application Designer, open the SAIP_V1_MASTER project and select Build, Project.
2. Select Create Tables in the Build Options region, and select Execute and build script in the Build Execute Options region.
3. Click the Settings button.

The Build Settings dialog box appears.

- On the Create tab, select the option Skip table if it already exists.
 - On the Logging tab, select the options Fatal errors and warnings, Log to output window, and Log to File.
 - On the Scripts tab, specify the output script file name.
4. Click OK to exit the Build Settings dialog box.
 5. Click the Build button.

There should be no errors or warnings reported.

6. In Application Designer, again using the SAIP_V1_MASTER project, select Build, Project.
7. Select Create Views in the Build Options region and select Execute and build script from the Build Execute Options region.
8. Click the Settings button.

The Build Settings dialog box appears.

- On the Create tab, select Recreate View if it already exists.
- On the Logging tab, select the options Fatal errors and warnings, Log to output window, and Log to File.
- On the Scripts tab, specify the output script file name.

9. Click OK to exit the Build Settings dialog box.
10. Click the Build button.

There should be no errors or warnings.

Task 1-5: Installing Additional Database Changes Using PeopleSoft Data Mover

Run the following scripts in Data Mover to import Message Catalog data and initialize tables.

DMS File Name	Data File	Description
saip_integration_init.dms	saip_integration_init.dat	Initialize SOA message tables
saip_msgcat.dms	saip_msgcat.dat	Message Catalog data
saip_roles.dms	saip_roles.dat	SAIP Roles
saip_setup_init.dms	saip_setup_init.dat	Installation tables initialization
saipmsgschema.dms	saipmsgschema.dat	SAIP message schema
saipwsdl.dms	saipwsdl.dat	SAIP WSDL

If you are using Student Administration Integration Pack with the Dutch language, run the following scripts after running saip_integration_init.dms, saip_msgcat.dms, and saip_roles.dms:

- saip_integration_init_dut_i.dms — loads the translated SOA message tables data
- saip_msgcat_dut_i.dms — loads the translated Message Catalog data
- saip_roles_dut_i.dms — loads the translated SAIP Roles data

Task 1-6: Copying the SAIP Multilingual Project into the Student Administration Database

You only need to perform this task if you are using the Dutch language.

To copy the SAIP_V1_MASTER_ML Multilingual project into the PeopleSoft Student Administration 9.0 database:

1. Open PeopleSoft Application Designer and sign in to the PeopleSoft Student Administration 9.0 database in two-tier mode.
2. Select Tools, Copy Project, From File.
3. For Import Directory, browse to folder *PS_HOME\Projects*.
4. Select the SAIP_V1_MASTER_ML project, and click Select.
5. Click the Options button and ensure that Dutch and Common are selected in the Copy options tab.
Do *not* select English as those objects have already been copied.
6. Click OK.
7. Click Select All.
8. Click Copy.

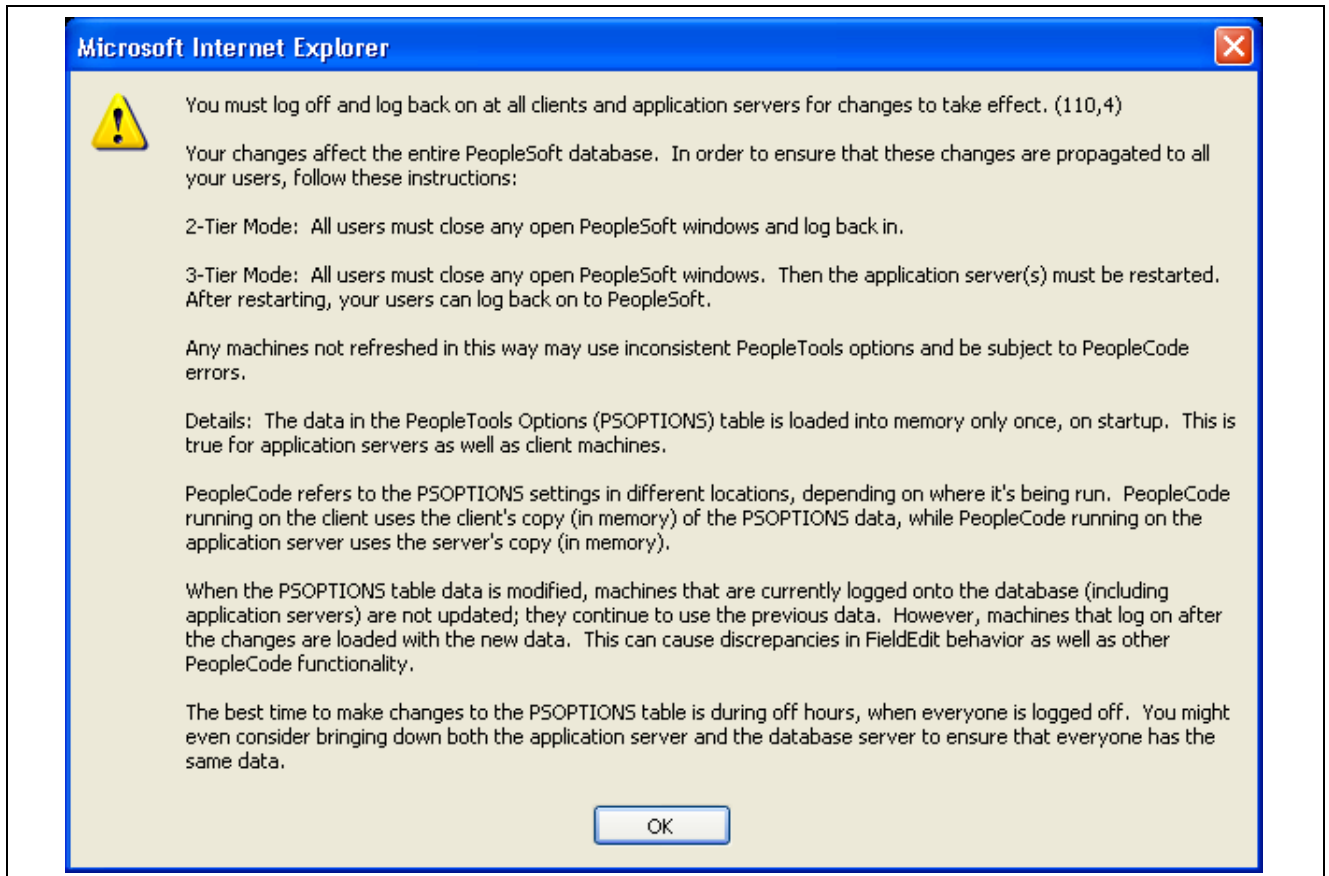
The copying process continues until the entire Multilingual SAIP Project is copied into the target database. Once the project is copied, the project should be visible in Application Designer. You will not need to build this project.

Task 1-7: Setting Up Installation Options

Oracle recommends that you update the Student Administration Integration Pack indicator on the Installation page on both your SYS and DMO databases to ensure that the license for the product is turned on and recognized.

Log in to the PeopleSoft application in a browser and navigate to Set Up HRMS, Install, Installation Table. On the Products page, select the SA Integration Pack check box.

After making changes to the Installation table, you will receive the following informational message. You will then need to log off all clients and shut down and restart all application servers, and then log back on for the change to take effect.



Informational message

Note. Integration Broker objects such as service operations included in the SAIP are delivered with an Active status. These objects may need to be deactivated or otherwise configured for your environment as part of the overall implementation of the Student Administration Integration Pack. For more information on activating, deactivating and configuring Integration Broker objects, see Tasks 1-12 (Deactivating Student Administration Integration Pack Service Operations) and 1-13 (Deactivating Student Administration Integration Pack Service Routings) of this installation guide, and the Enterprise PeopleTools 8.49 documentation.

See Also

Enterprise PeopleTools 8.49 PeopleBook: PeopleSoft Integration Broker

Task 1-8: Applying the Core Overlaps Project

Student Administration Information Pack 9.0 is being released as a bolt-on to the PeopleSoft Student Administration 9.0 release. As a broader solution, it includes not only objects and code specific to the SAIP and new to the database, but also modifications of existing PeopleSoft Student Administration objects and code to participate in and take advantage of the SAIP.

These modified core objects are integral to the SAIP, but are not delivered as part of the SAIP 9.0 product (on the CD or via electronic download). Instead, in order to minimize implementation complexities, these modifications are delivered as an Incident Resolution, to be applied to your PeopleSoft Student Administration implementation after the SAIP has been installed.

To apply the core objects changes:

Apply Incident Resolution 768436, following the installation instructions included with that resolution.

See PeopleSoft Customer Connection, Updates + Fixes.

After applying the incident resolution, proceed to the following task, Running Conversion Programs Using PeopleSoft Application Engine.

Task 1-9: Running Conversion Programs Using PeopleSoft Application Engine

To run PeopleSoft Application Engine, run psae.exe in the directory *PS_HOME\bin\client\winx86*.

Note. You can also run these conversion programs by logging in to PeopleSoft in the browser and selecting PeopleTools, Application Engine, Request AE.

Application Engine Program	Description
SAE_CMBN_EXT	Populates the SAE_CMBN_EXT table based on the SCTN_CMBND table
SAE_COMP_EXT	Populates the SAE_CRSCMP_EXT table based on the CRSE_COMPONENT table
SAE_CSEC_EXT	Populates the SAE_CLASS_EXT table based on the CLASS_TBL table
SAE_CTLG_EXT	Populates the SAE_CRSCCTLG_EXT table based on the CRSE_CATALOG table
SAE_MBRs_EXT	Populates the SAE_INSTR_EXT table based on the CLASS_INSTR table
SAE_MTG_EXT	Populates the SAE_MTG_PAT_EXT table based on the CLASS_MTG_PAT table
SAE_OFFR_EXT	Populates the SAE_CRSOFFER_EXT table based on the CRSE_OFFER table
SAE_TERM_EXT	Populates the SAE_TERM_EXT table based on the TERM_TBL table

Task 1-10: Adjusting Version Numbers and Running Audit Reports on the Student Administration Database

To run the VERSION Application Engine program in the target PeopleSoft Student Administration 9.0 database:

1. Run *PS_HOME\bin\client\winx86\psae.exe*.
2. Use the following command to execute the VERSION program:

```
psae.exe -CD dbname [-CS server] -CT type -CO operid -CP pswd -R run control id⇒
```

```
-I process instance -AI VERSION
```

After running the VERSION application engine program, you may experience problems in the service registry due to the caching of metadata. It is recommended that you refresh the HCM Service Registry cache whenever a definition is modified, added, or deleted, or when an external cache has to be imported.

To refresh the HCM Registry Cache:

1. Log in to the PeopleSoft application in a browser.
2. Select Set Up HRMS, System Administration, HCM Registry, Service Registry, HCM Interface Registry.
Note that this component may take a long time to load.
3. Select Owner Identifier = HCM Service Framework.
4. Click the Refresh Cache button.

Note. RDBMS platform installations that require tablespaces need to run SETSPACE.SQR to synchronize the tablespace information with the system catalog. To complete the process, run the DDDAUDIT.SQR and SYSAUDIT.SQR reports to ensure that SAIP 9.0 has not introduced any exceptions.

Task 1-11: Granting Security to Student Administration Integration Pack Objects

Security for access to SAIP-specific navigational items is granted through Permission Lists and Roles loaded as part of Tasks 1-3 (Copying the SAIP Project into the Student Administration Database) through 1-5 (Installing Additional Database Changes Using PeopleSoft Data Mover) above. This project includes the role SAIP Administrator, to which are attached permission lists HCCPCSSA1120 and HCCPCSSA1130. These roles and permission lists are provided as a convenience and as an example of how you might configure access to SAIP pages.

In addition to SAIP-specific items, the SAIP includes modifications and additions to a number of PeopleSoft Student Administration objects. These modifications are delivered as part of Incident Resolution 768436 (see Task 1-8, Applying the Core Overlaps Project), as well as Campus Solutions Bundle #7 (or the multilingual version). The objects in the following table can have access granted to them by adding them to new or existing Permission Lists.

Here is an overview of the procedure for authorizing permission:

1. Log in to the PeopleSoft application in a browser.
2. Select PeopleTools, Security, Permissions & Roles, Permission Lists.
3. Select the permission list you want to modify.
4. Use the menu, component, and page information from the Usage column below to select the correct information.

After you have granted permission, use the information in the Navigation column below to select the page.

Page	Object	Description	Navigation	Usage
IMS Scoping and Association	SAE_CLASS_CONFIG	Identify and associate class sections to create course sites for a course.	Curriculum Management, Schedule of Classes, IMS Scoping and Association	In the permission list, add or locate Menu Name SAE_MENU, Component SAE_CLASS_CONFIG, page IMS Scoping and Association, and select to authorize permission.
Associate Combined Sections	SAE_CMBNDSE_ASSOC	Identify combined sections to include or exclude in the snapshot transfer.	Curriculum Management, Combined Sections, Associate Combined Sections	In the permission list, add or locate Menu Name SAE_MENU, Component SAE_CMBNDSE_ASSOC, page Associate Combined Sections, and select to authorize permission.
SAIP Scoping and Association	SAE_SCOPE_SETUP	Identify default settings for including academic organizations and their elements during system initialization and for all subsequent snapshot and event-based data transfers.	Set Up SACR, Product Related, SA Integration Pack, SAIP Scoping and Association	In the permission list, add or locate Menu Name SAE_MENU, Component SAE_SCOPE_SETUP, page SAIP Scoping and Association, and select to authorize permission.
Integration	SAE_SETUP	Set up Student Administration Integration Pack	Set Up SACR, Install, SAIP Installation	In the permission list, add or locate Menu Name SAE_MENU, Component SAE_SETUP, page Integration, and select to authorize permission.
IMS Integration	SAE_TERM_SETUP	Provides a term-based start date for the integration of courses with external learning systems.	Set Up SACR, Foundation Tables, Term Setup, Term/Session Table, IMS Integration tab	In the permission list, add or locate Menu Name DESIGN_ACADEMIC_STRUCTURE, Component TERM_TABLE, page IMS Integration, and select to authorize permission.
Event Register	SCC_INT_EVT_PUB	Register Online and Batch Event Publish application classes	Set Up SACR, System Administration, Integrations, Event Register	In the permission list, add or locate Menu Name DEFINE_CAMPUS_COMMUNITY, Component SCC_INTEG_EVT_PUB, page Event Register, and select to authorize permission

Page	Object	Description	Navigation	Usage
Notification Handlers	SCC_INT_NOTFY_HND	Register notification handler application classes for use in the Campus Solutions SOA Framework	Set Up SACR, System Administration, Integrations, Notification Handlers	In the permission list, add or locate Menu Name DEFINE_CAMPUS_COMMUNITY, Component SCC_INTEG_NFY_HND, page Notification Handlers, and select to authorize permission
Request Handler	SCC_INT_REQUEST_HND	Register request handler application classes for use in the Campus Solutions SOA Framework	Set Up SACR, System Administration, Integrations, Request Handlers	In the permission list, add or locate Menu Name DEFINE_CAMPUS_COMMUNITY, Component SCC_INTEG_REQ_HND, page Request Handler, and select to authorize permission
Routing Handler	SCC_INT_ROUTE_HND	Register routing handler application classes for use in the Campus Solutions SOA Framework	Set Up SACR, System Administration, Integrations, Routing Handlers	In the permission list, add or locate Menu Name DEFINE_CAMPUS_COMMUNITY, Component SCC_INTEG_RTE_HND, page Routing Handler, and select to authorize permission
Transformation Handler	SCC_INT_TRANS_HND	Register transformation handler application classes for use in the Campus Solutions SOA Framework	Set Up SACR, System Administration, Integrations, Transformation Handlers	In the permission list, add or locate Menu Name DEFINE_CAMPUS_COMMUNITY, Component SCC_INTEG_TRN_HND, page Transformation Handler, and select to authorize permission
Logging	SCC_INTEG_LOGGING	Define logging parameters for the Campus Solutions SOA Framework	Set Up SACR, System Administration, Integrations, Logging	In the permission list, add or locate Menu Name DEFINE_CAMPUS_COMMUNITY, Component SCC_INT_LOGGING, page Logging, and select to authorize permission

For detailed instructions on creating and modifying Permission Lists, see the PeopleSoft PeopleTools security documentation.

See *Enterprise PeopleTools 8.49 PeopleBook: Security Administration*.

Task 1-12: Deactivating Student Administration Integration Pack Service Operations

Service operations for the SAIP are delivered in an Active status. You may wish to deactivate those service operations in order to control the transmission of data prior to full deployment of the SAIP. To deactivate all the delivered SAIP service operations at once, please see Campus Solutions 9.0 Bundle #10 (or the multilingual version).

To deactivate service operations individually:

1. Log in to the PeopleSoft application in a browser.
2. Select PeopleTools, Integration Broker, Integration Setup, Service Operations.
3. Select each of the service operations in the following table.
4. For each service operation, on the General page, in the Default Service Operation Version group box, clear the Active check box and Save.

Note. You will need to activate these service operations in order for the SAIP to be functional. To activate all of the delivered SAIP service operations, please see Campus Solutions 9.0 Bundle #10 (or the multilingual version). To activate service operations manually, follow the preceding steps but in step 4 select the Active check box and Save.

Service Operation	Service
ADDCOURSESECTIONID_SYNC	COURSEMANAGEMENTSERVICE
CHANGECOURSESECIDENTIFIER_SYNC	COURSEMANAGEMENTSERVICE
CHANGECRSEOFFERIDENTIFIER_SYNC	COURSEMANAGEMENTSERVICE
CHANGECRSETEMPIDENTIFIER_SYNC	COURSEMANAGEMENTSERVICE
CHANGESECASSOCIDENTIFIER_SYNC	COURSEMANAGEMENTSERVICE
CREATEBATCHCOURSESECTION	COURSEMANAGEMENTSERVICE
CREATEBYPROXYCOURSESEC_SYNC	COURSEMANAGEMENTSERVICE
CREATEBYPROXYCRSEOFFERING_SYNC	COURSEMANAGEMENTSERVICE
CREATEBYPROXYCRSETEMPLATE_SYNC	COURSEMANAGEMENTSERVICE
CREATEBYPROXYSECASSOC_SYNC	COURSEMANAGEMENTSERVICE
CREATECOURSEOFFERING	COURSEMANAGEMENTSERVICE
CREATECOURSEOFFERING_SYNC	COURSEMANAGEMENTSERVICE
CREATECOURSESECFCS_SYNC	COURSEMANAGEMENTSERVICE

Service Operation	Service
CREATECOURSESECTION	COURSEMANAGEMENTSERVICE
CREATECOURSESECTION_SYNC	COURSEMANAGEMENTSERVICE
CREATECOURSETEMPLATE	COURSEMANAGEMENTSERVICE
CREATECOURSETEMPLATE_SYNC	COURSEMANAGEMENTSERVICE
CREATEOFFERFROMCRSEOFFER_SYNC	COURSEMANAGEMENTSERVICE
CREATESECTIONASSOCIATION	COURSEMANAGEMENTSERVICE
CREATESECTIONASSOCIATION_SYNC	COURSEMANAGEMENTSERVICE
DELETECOURSEOFFERING	COURSEMANAGEMENTSERVICE
DELETECOURSEOFFERING_SYNC	COURSEMANAGEMENTSERVICE
DELETECOURSESECTION	COURSEMANAGEMENTSERVICE
DELETECOURSESECTION_SYNC	COURSEMANAGEMENTSERVICE
DELETECOURSETEMPLATE	COURSEMANAGEMENTSERVICE
DELETECOURSETEMPLATE_SYNC	COURSEMANAGEMENTSERVICE
DELETESECTIONASSOCIATION	COURSEMANAGEMENTSERVICE
DELETESECTIONASSOCIATION_SYNC	COURSEMANAGEMENTSERVICE
DISCOVERCOURSEOFFERINGIDS_SYNC	COURSEMANAGEMENTSERVICE
DISCOVERCOURSESECTIONIDS_SYNC	COURSEMANAGEMENTSERVICE
DISCOVERCOURSETEMPLATEIDS_SYNC	COURSEMANAGEMENTSERVICE
DISCOVERSECTIONASSOCIDS_SYNC	COURSEMANAGEMENTSERVICE
READALACTOFFRIDSFORACDSES_SYNC	COURSEMANAGEMENTSERVICE
READALLCOURSEOFFERINGIDS_SYNC	COURSEMANAGEMENTSERVICE
READALLCOURSESECTIONIDS_SYNC	COURSEMANAGEMENTSERVICE
READALLCOURSETEMPLATEIDS_SYNC	COURSEMANAGEMENTSERVICE
READALLSECTIONASSOCIDS_SYNC	COURSEMANAGEMENTSERVICE
READBATCHCOURSESECTION	COURSEMANAGEMENTSERVICE
READCOURSEOFFERING	COURSEMANAGEMENTSERVICE
READCOURSEOFFERINGIDSFSP_SYNC	COURSEMANAGEMENTSERVICE
READCOURSEOFFERINGS	COURSEMANAGEMENTSERVICE
READCOURSEOFFERINGSFRSAVEPT	COURSEMANAGEMENTSERVICE
READCOURSEOFFERING_SYNC	COURSEMANAGEMENTSERVICE
READCOURSESECTION	COURSEMANAGEMENTSERVICE
READCOURSESECTIONIDSFSP_SYNC	COURSEMANAGEMENTSERVICE

Service Operation	Service
READCOURSESECTIONS	COURSEMANAGEMENTSERVICE
READCOURSESECTIONSFROMSP	COURSEMANAGEMENTSERVICE
READCOURSESECTION_SYNC	COURSEMANAGEMENTSERVICE
READCOURSETEMPLATE	COURSEMANAGEMENTSERVICE
READCOURSETEMPLATEIDSFSP_SYNC	COURSEMANAGEMENTSERVICE
READCOURSETEMPLATES	COURSEMANAGEMENTSERVICE
READCOURSETEMPLATESFRSAVEPT	COURSEMANAGEMENTSERVICE
READCOURSETEMPLATE_SYNC	COURSEMANAGEMENTSERVICE
READCRSEOFFERIDSFORTMP_SYNC	COURSEMANAGEMENTSERVICE
READCRSESECIDSFOROFFER_SYNC	COURSEMANAGEMENTSERVICE
READSECTIONASSOCIATION	COURSEMANAGEMENTSERVICE
READSECTIONASSOCIATIONS	COURSEMANAGEMENTSERVICE
READSECTIONASSOCIATIONSFRSVPT	COURSEMANAGEMENTSERVICE
READSECTIONASSOCIATION_SYNC	COURSEMANAGEMENTSERVICE
READSECTIONASSOCIDSFSP_SYNC	COURSEMANAGEMENTSERVICE
REMOVECOURSESECTIONID_SYNC	COURSEMANAGEMENTSERVICE
REPLACECOURSEOFFERING_SYNC	COURSEMANAGEMENTSERVICE
REPLACECOURSESECTION_SYNC	COURSEMANAGEMENTSERVICE
REPLACECOURSETEMPLATE_SYNC	COURSEMANAGEMENTSERVICE
REPLACESECTIONASSOCIATION_SYNC	COURSEMANAGEMENTSERVICE
UPDATECOURSEOFFERING	COURSEMANAGEMENTSERVICE
UPDATECOURSEOFFERING_SYNC	COURSEMANAGEMENTSERVICE
UPDATECOURSESECTION	COURSEMANAGEMENTSERVICE
UPDATECOURSESECTIONSTATUS_SYNC	COURSEMANAGEMENTSERVICE
UPDATECOURSESECTION_SYNC	COURSEMANAGEMENTSERVICE
UPDATECOURSETEMPLATE	COURSEMANAGEMENTSERVICE
UPDATECOURSETEMPLATE_SYNC	COURSEMANAGEMENTSERVICE
UPDATECRSEOFFERINGSTATUS_SYNC	COURSEMANAGEMENTSERVICE
UPDATESECTIONASSOCIATION	COURSEMANAGEMENTSERVICE
UPDATESECTIONASSOCIATION_SYNC	COURSEMANAGEMENTSERVICE
ADDGROUPRELATIONSHIP_SYNC.v1	GROUPMANAGEMENTSERVICE
CHANGEGROUPIDENTIFIER_SYNC.v1	GROUPMANAGEMENTSERVICE

Service Operation	Service
CREATEBYPROXYGROUP_SYNC.v1	GROUPMANAGEMENTSERVICE
CREATEGROUP.v1	GROUPMANAGEMENTSERVICE
CREATEGROUP_SYNC.v1	GROUPMANAGEMENTSERVICE
DELETEGROUP.v1	GROUPMANAGEMENTSERVICE
DELETEGROUP_SYNC.v1	GROUPMANAGEMENTSERVICE
DISCOVERGROUPIDS_SYNC.v1	GROUPMANAGEMENTSERVICE
READALLGROUPIDS_SYNC.v1	GROUPMANAGEMENTSERVICE
READGROUPIDSFORPERSON_SYNC.v1	GROUPMANAGEMENTSERVICE
READGROUPIDSFROMSAVEPOINT_SYNC.v1	GROUPMANAGEMENTSERVICE
READGROUPMGMT.v1	GROUPMANAGEMENTSERVICE
READGROUPSFROMSAVEPOINT.v1	GROUPMANAGEMENTSERVICE
READGROUPSMGMT.v1	GROUPMANAGEMENTSERVICE
READGROUP_SYNC.v1	GROUPMANAGEMENTSERVICE
REMOVEGROUPRELATIONSHIP_SYNC.v1	GROUPMANAGEMENTSERVICE
REPLACEGROUP_SYNC.v1	GROUPMANAGEMENTSERVICE
UPDATEGROUP.v1	GROUPMANAGEMENTSERVICE
UPDATEGROUP_SYNC.v1	GROUPMANAGEMENTSERVICE
CHANGEPERSONIDENTIFIER_SYNC.v1	PERSONMANAGEMENTSERVICE
CREATEBYPROXYPERSON_SYNC.v1	PERSONMANAGEMENTSERVICE
CREATEPERSON.v1	PERSONMANAGEMENTSERVICE
CREATEPERSON_SYNC.v1	PERSONMANAGEMENTSERVICE
DELETEPERSON.v1	PERSONMANAGEMENTSERVICE
DELETEPERSON_SYNC.v1	PERSONMANAGEMENTSERVICE
DISCOVERPERSONIDS_SYNC.v1	PERSONMANAGEMENTSERVICE
READALLPERSONIDS_SYNC.v1	PERSONMANAGEMENTSERVICE
READPERSON.v1	PERSONMANAGEMENTSERVICE
READPERSONCORE_SYNC.v1	PERSONMANAGEMENTSERVICE
READPERSONIDSFROMSAVPOINT_SYNC.v1	PERSONMANAGEMENTSERVICE
READPERSONS.v1	PERSONMANAGEMENTSERVICE
READPERSONSFROMSAVEPOINT.v1	PERSONMANAGEMENTSERVICE
READPERSON_SYNC.v1	PERSONMANAGEMENTSERVICE
REPLACEPERSON.v1	PERSONMANAGEMENTSERVICE

Service Operation	Service
REPLACEPERSON_SYNC.v1	PERSONMANAGEMENTSERVICE
UPDATEPERSON_SYNC.v1	PERSONMANAGEMENTSERVICE
CHANGEMEMBERIDENTIFIER_SYNC.v1	MEMBERSHIPMANAGEMENTSERVICE
CREATEBYPROXYMEMBERSHIP_SYNC.v1	MEMBERSHIPMANAGEMENTSERVICE
CREATEMEMBERSHIPS.v1	MEMBERSHIPMANAGEMENTSERVICE
CREATEMEMBERSHIP_SYNC.v1	MEMBERSHIPMANAGEMENTSERVICE
DELETEMEMBERSHIPS.v1	MEMBERSHIPMANAGEMENTSERVICE
DELETEMEMBERSHIP_SYNC.v1	MEMBERSHIPMANAGEMENTSERVICE
DISCOVERMEMBERSHIPIDS_SYNC.v1	MEMBERSHIPMANAGEMENTSERVICE
READALLMEMBERSHIPIDS_SYNC.v1	MEMBERSHIPMANAGEMENTSERVICE
READMEMBERSHIP.v1	MEMBERSHIPMANAGEMENTSERVICE
READMEMBERSHIPIDSFORCOLL_SYNC.v1	MEMBERSHIPMANAGEMENTSERVICE
READMEMBERSHIPIDSFORPWR_SYNC.v1	MEMBERSHIPMANAGEMENTSERVICE
READMEMBERSHIPIDSFSP_SYNC.v1	MEMBERSHIPMANAGEMENTSERVICE
READMEMBERSHIPIDSPERSON_SYNC.v1	MEMBERSHIPMANAGEMENTSERVICE
READMEMBERSHIPS.v1	MEMBERSHIPMANAGEMENTSERVICE
READMEMBERSHIPSFROMSAVEPOINT.v1	MEMBERSHIPMANAGEMENTSERVICE
READMEMBERSHIP_SYNC.v1	MEMBERSHIPMANAGEMENTSERVICE
REPLACEMEMBERSHIP_SYNC.v1	MEMBERSHIPMANAGEMENTSERVICE
UPDATEMEMBERSHIPS.v1	MEMBERSHIPMANAGEMENTSERVICE
UPDATEMEMBERSHIP_SYNC.v1	MEMBERSHIPMANAGEMENTSERVICE
READOUTCOMES.V1	OUTCOMESERVICE

Task 1-13: Deactivating Student Administration Integration Pack Service Routings

Routings for the SAIP are delivered in an Active status. You may wish to deactivate those routings in order to control the transmission of data prior to full deployment of the SAIP. To deactivate all the delivered SAIP routings at once, please see Campus Solutions 9.0 Bundle #10 (or the multilingual version).

To deactivate service operations individually:

1. Log in to the PeopleSoft application in a browser.
2. Select PeopleTools, Integration Broker, Integration Setup, Routings.
3. Select each of the routings in the following list.

4. For each routing, on the Routing Definitions page, clear the Active check box and Save.

Note. You will need to activate these routings in order for the SAIP to be functional. To activate all of the delivered SAIP routings, please see Campus Solutions 9.0 Bundle #10 (or the multilingual version). To activate routings manually, follow the preceding steps but in step 4 select the Active check box and Save.

SAIP routings:

- CHANGEMEMBERIDENTIFIER_SYNC
- CREATEBYPROXYMEMBERSHIP_SYNC
- CREATEMEMBERSHIPS
- CREATEMEMBERSHIP_SYNC
- DELETEMEMBERSHIP_SYNC
- DELETEMEMBERSHIPS
- DISCOVERMEMBERSHIPIDS_SYNC
- LMS_CREATE_SECTION_ASSOCIATION
- LMS_DELETE_SECTION_ASSOCIATION
- LMS_UPDATE_SECTION_ASSOCIATION
- READALLMEMBERSHIPIDS_SYNC
- READMEMBERSHIP_SYNC
- READMEMBERSHIPIDSFORCOLL_SYNC
- READMEMBERSHIPIDSFORPWR_SYNC
- READMEMBERSHIPIDSFSP_SYNC
- READMEMBERSHIPIDSPERSON_SYNC
- REPLACEMEMBERSHIP_SYNC
- SAE_ADDCOURSESECTIONID_SYNC
- SAE_ADDGROUPRELATIONSHIP_SYNC
- SAE_CHANGEOURSESECIDENTIFIER
- SAE_CHANGECRSETEMPIDENT_SYNC
- SAE_CHANGEGROUPIDENTIFIER_SYNC
- SAE_CHANGEOFFERIDENTIFIER_SYNC
- SAE_CHANGEPERSONIDENTIFIER_SYNC
- SAE_CHANGESECASSOCIDENT_SYNC
- SAE_COURSE_SECTION_BAT_IMS
- SAE_COURSEOFFERINGS_INC_SNAP
- SAE_COURSETEMPLATE_INC_SNAP
- SAE_CREATEBYPROXYCOURSESEC_SYNC
- SAE_CREATEBYPROXYCRSETEMP_SYNC
- SAE_CREATEBYPROXYGROUP_SYNC

- SAE_CREATEBYPROXYPERSON_SYNC
- SAE_CREATEBYPROXYSECASSOC_SYNC
- SAE_CREATEBYPRXYCRSEOFFER_SYNC
- SAE_CREATECOURSEOFFERING_SYNC
- SAE_CREATECOURSESECFCS_SYNC
- SAE_CREATECOURSESECTION_SYNC
- SAE_CREATECOURSETEMPLATE_SYNC
- SAE_CREATEGROUP_SYNC
- SAE_CREATEOFFERFROMOFFER_SYNC
- SAE_CREATEPERSON_SYNC
- SAE_CREATESECTIONASSOC_SYNC
- SAE_CRSE_SEC_LOCAL
- SAE_DELETECOURSEOFFERING_SYNC
- SAE_DELETECOURSESECTION_SYNC
- SAE_DELETECOURSETEMPLATE_SYNC
- SAE_DELETEGROUP_SYNC
- SAE_DELETEPERSON_SYNC
- SAE_DELETESECTIONASSOC_SYNC
- SAE_DISCCRSETEMPLATEIDS_SYNC
- SAE_DISCOVERCOURSESECIDS_SYNC
- SAE_DISCOVERCRSEOFFERIDS_SYNC
- SAE_DISCOVERGROUPIDS_SYNC
- SAE_DISCOVERPERSONIDS_SYNC
- SAE_DISCOVERSECASSOCIDS_SYNC
- SAE_GRADE_ROUTING
- SAE_GROUP_SYNC
- SAE_LMS_BAT_CRSE_SEC_CREATE
- SAE_LMS_CREATE_GROUP
- SAE_LMS_CREATECRSEOFFERING
- SAE_LMS_CREATECRSETEMPLATE
- SAE_LMS_CRSE_SEC_CREATE
- SAE_LMS_CRSE_SEC_DEL
- SAE_LMS_CRSE_SEC_UPDATE
- SAE_LMS_DELETE_GROUP
- SAE_LMS_DELETECRSEOFFERING
- SAE_LMS_DELETECRSTEMPLATE

- SAE_LMS_PERSON_CREATE
- SAE_LMS_PERSON_DELETE
- SAE_LMS_PERSON_REPLACE
- SAE_LMS_UPDATE_GROUP
- SAE_LMS_UPDATECRSOFFERING
- SAE_LMS_UPDATECRSTEMPLATE
- SAE_PERSON_SYNC
- SAE_PERSONIDSFROMSAVPOINT_SYNC
- SAE_PUBLISH_MEMBERSHIP
- SAE_PUBLISH_PERSON
- SAE_READALACTOFFRIDSACD_SYNC
- SAE_READALLCOURSESECIDS_SYNC
- SAE_READALLCRSEOFFERIDS_SYNC
- SAE_READALLCRSETEMPIDS_SYNC
- SAE_READALLGROUPIDS_SYNC
- SAE_READALLPERSONIDS_SYNC
- SAE_READALLSECASSOCIDS_SYNC
- SAE_READCOURSEOFFERING
- SAE_READCOURSEOFFERING_SYNC
- SAE_READCOURSEOFFERINGS_SNAP
- SAE_READCOURSESECIDSFSP_SYNC
- SAE_READCOURSESECTION_SYNC
- SAE_READCOURSESECTIONS_SNAP
- SAE_READCOURSESECTIONSFROMSP
- SAE_READCOURSETEMPLATE
- SAE_READCOURSETEMPLATE_SYNC
- SAE_READCOURSETEMPLATES_SNAP
- SAE_READCRSEOFFERIDSFSP_SYNC
- SAE_READCRSETEMPIDSFSP_SYNC
- SAE_READGROUP_SYNC
- SAE_READGROUPIDSFORPERSON_SYNC
- SAE_READGROUPIDSFSP_SYNC
- SAE_READGROUPS_SNAP
- SAE_READGROUPSFROMSAVEPOINT
- SAE_READMEMBERSHIPS_INC_SNAP
- SAE_READMEMBERSHIPS_SNAP

- SAE_READOFFERIDSFORTEMP_SYNC
- SAE_READPERSON_SYNC
- SAE_READPERSONCORE_SYNC
- SAE_READPERSONS_INC_SNAP
- SAE_READPERSONS_SNAP
- SAE_READSECASSOCIATIONS_SNAP
- SAE_READSECASSOCIDSFSP_SYNC
- SAE_READSECIDSFOROFFER_SYNC
- SAE_READSECTIONASSOC_SYNC
- SAE_REMOVECOURSESECTIONID_SYNC
- SAE_REMOVEGROUPRELATIONSHIP
- SAE_REPLACECOURSEOFFERING_SYNC
- SAE_REPLACECOURSESECTION_SYNC
- SAE_REPLACECOURSETEMPLATE_SYNC
- SAE_REPLACEGROUP_SYNC
- SAE_REPLACEPERSON_SYNC
- SAE_REPLACESECTIONASSOC_SYNC
- SAE_SECTIONASSOCIATIONS_INC_SP
- SAE_UPDATECOURSEOFFERING_SYNC
- SAE_UPDATECOURSESECTION_SYNC
- SAE_UPDATECOURSESECTIONSTATUS
- SAE_UPDATECOURSETEMPLATE_SYNC
- SAE_UPDATECRSEOFFERSTATUS_SYNC
- SAE_UPDATEGROUP_SYNC
- SAE_UPDATEPERSON_SYNC
- SAE_UPDATESECTIONASSOC_SYNC
- SECTION_ASSOCIATION_ASYNC
- UPDATEMEMBERSHIP_SYNC
- UPDATEMEMBERSHIPS

Index

A

audit reports, running 8

C

conversion programs, running 8

I

installation table, updating 6

installing from the CD 2

Integration Broker objects 6

M

Message Catalog data, importing 5

multilingual SAIP installation 3

P

permission lists 9

project, building 4

S

SAIP, *See* Student Administration

Integration Pack

SAIP Administrator role 9

SAIP_V1_MASTER project

building 4

copying into the Student Administration

database 4

SAIP_V1_MASTER_ML project 6

security, setting up 9

service operations, deactivating after

installation 12

service routings, deactivating after

installation 16

Student Administration database

copying Student Administration

Integration Pack 4

Student Administration Integration Pack,

installing 2

V

VERSION Application Engine program,

running 8

