
PeopleSoft Enterprise EPM 8.8x Supply Chain Planning to Financials/Supply Chain Management 9.0 MP5 Upgrade

March 2008

PeopleSoft Enterprise EPM 8.8x Supply Chain Planning to Financials/Supply Chain Management 9.0 MP5 Upgrade
SKU ufscm_mp5_032708_uepm88tofscm90mp5
Copyright © 2008, Oracle. All rights reserved.

The Programs (which include both the software and documentation) contain proprietary information; they are provided under a license agreement containing restrictions on use and disclosure and are also protected by copyright, patent, and other intellectual and industrial property laws. Reverse engineering, disassembly, or decompilation of the Programs, except to the extent required to obtain interoperability with other independently created software or as specified by law, is prohibited.

The information contained in this document is subject to change without notice. If you find any problems in the documentation, please report them to us in writing. This document is not warranted to be error-free. Except as may be expressly permitted in your license agreement for these Programs, no part of these Programs may be reproduced or transmitted in any form or by any means, electronic or mechanical, for any purpose.

If the Programs are delivered to the United States Government or anyone licensing or using the Programs on behalf of the United States Government, the following notice is applicable:

U.S. GOVERNMENT RIGHTS

Programs, software, databases, and related documentation and technical data delivered to U.S. Government customers are “commercial computer software” or “commercial technical data” pursuant to the applicable Federal Acquisition Regulation and agency-specific supplemental regulations. As such, use, duplication, disclosure, modification, and adaptation of the Programs, including documentation and technical data, shall be subject to the licensing restrictions set forth in the applicable Oracle license agreement, and, to the extent applicable, the additional rights set forth in FAR 52.227-19, Commercial Computer Software--Restricted Rights (June 1987). Oracle Corporation, 500 Oracle Parkway, Redwood City, CA 94065.

The Programs are not intended for use in any nuclear, aviation, mass transit, medical, or other inherently dangerous applications. It shall be the licensee’s responsibility to take all appropriate fail-safe, backup, redundancy and other measures to ensure the safe use of such applications if the Programs are used for such purposes, and we disclaim liability for any damages caused by such use of the Programs.

The Programs may provide links to Web sites and access to content, products, and services from third parties. Oracle is not responsible for the availability of, or any content provided on, third-party Web sites. You bear all risks associated with the use of such content. If you choose to purchase any products or services from a third party, the relationship is directly between you and the third party. Oracle is not responsible for: (a) the quality of third-party products or services; or (b) fulfilling any of the terms of the agreement with the third party, including delivery of products or services and warranty obligations related to purchased products or services. Oracle is not responsible for any loss or damage of any sort that you may incur from dealing with any third party.

Oracle is a registered trademark of Oracle Corporation and/or its affiliates. Other names may be trademarks of their respective owners.

Open Source Disclosure

Oracle takes no responsibility for its use or distribution of any open source or shareware software or documentation and disclaims any and all liability or damages resulting from use of said software or documentation. The following open source software may be used in Oracle’s PeopleSoft products and the following disclaimers are provided.

Apache Software Foundation

This product includes software developed by the Apache Software Foundation (<http://www.apache.org/>). Copyright © 2000-2003. The Apache Software Foundation. All rights reserved. Licensed under the Apache License, Version 2.0 (the “License”); you may not use this file except in compliance with the License. You may obtain a copy of the License at <http://www.apache.org/licenses/LICENSE-2.0>.

Unless required by applicable law or agreed to in writing, software distributed under the License is distributed on an “AS IS” BASIS, WITHOUT WARRANTIES OR CONDITIONS OF ANY KIND, either express or implied. See the License for the specific language governing permissions and limitations under the License.

OpenSSL

Copyright © 1998-2005 The OpenSSL Project. All rights reserved.

This product includes software developed by the OpenSSL Project for use in the OpenSSL Toolkit (<http://www.openssl.org/>).

THIS SOFTWARE IS PROVIDED BY THE OpenSSL PROJECT “AS IS” AND ANY EXPRESSED OR IMPLIED WARRANTIES, INCLUDING, BUT NOT LIMITED TO, THE IMPLIED WARRANTIES OF MERCHANTABILITY AND FITNESS FOR A PARTICULAR PURPOSE ARE DISCLAIMED. IN NO EVENT SHALL THE OpenSSL PROJECT OR ITS CONTRIBUTORS BE LIABLE FOR ANY DIRECT, INDIRECT, INCIDENTAL, SPECIAL, EXEMPLARY, OR CONSEQUENTIAL DAMAGES (INCLUDING, BUT NOT LIMITED TO, PROCUREMENT OF SUBSTITUTE GOODS OR SERVICES; LOSS OF USE, DATA, OR PROFITS; OR BUSINESS INTERRUPTION) HOWEVER CAUSED AND ON ANY THEORY OF LIABILITY, WHETHER IN CONTRACT, STRICT LIABILITY, OR TORT (INCLUDING NEGLIGENCE OR OTHERWISE) ARISING IN ANY WAY OUT OF THE USE OF THIS SOFTWARE, EVEN IF ADVISED OF THE POSSIBILITY OF SUCH DAMAGE.

Helma Project

Copyright © 1999-2004 Helma Project. All rights reserved. THIS SOFTWARE IS PROVIDED “AS IS” AND ANY EXPRESSED OR IMPLIED WARRANTIES, INCLUDING, BUT NOT LIMITED TO, THE IMPLIED WARRANTIES OF MERCHANTABILITY AND FITNESS FOR A PARTICULAR PURPOSE ARE DISCLAIMED. IN NO EVENT SHALL THE HELMA PROJECT OR ITS CONTRIBUTORS BE LIABLE FOR ANY DIRECT, INDIRECT, INCIDENTAL, SPECIAL, EXEMPLARY, OR CONSEQUENTIAL DAMAGES (INCLUDING, BUT NOT LIMITED TO, PROCUREMENT OF SUBSTITUTE GOODS OR SERVICES; LOSS OF USE, DATA, OR PROFITS; OR BUSINESS INTERRUPTION) HOWEVER CAUSED AND ON ANY THEORY OF LIABILITY, WHETHER IN CONTRACT, STRICT LIABILITY, OR TORT (INCLUDING NEGLIGENCE OR OTHERWISE) ARISING IN ANY WAY OUT OF THE USE OF THIS SOFTWARE, EVEN IF ADVISED OF THE POSSIBILITY OF SUCH DAMAGE.

Helma includes third party software released under different specific license terms. See the licenses directory in the Helma distribution for a list of these license.

Sarissa

Copyright © 2004 Manos Batsis.

This library is free software; you can redistribute it and/or modify it under the terms of the GNU Lesser General Public License as published by the Free Software Foundation; either version 2.1 of the License, or (at your option) any later version.

This library is distributed in the hope that it will be useful, but WITHOUT ANY WARRANTY; without even the implied warranty of MERCHANTABILITY or FITNESS FOR A PARTICULAR PURPOSE. See the GNU Lesser General Public License for more details.

You should have received a copy of the GNU Lesser General Public License along with this library; if not, write to the Free Software Foundation, Inc., 59 Temple Place, Suite 330, Boston, MA 02111-1307 USA.

ICU

ICU License - ICU 1.8.1 and later COPYRIGHT AND PERMISSION NOTICE Copyright © 1995-2003 International Business Machines Corporation and others. All rights reserved.

Permission is hereby granted, free of charge, to any person obtaining a copy of this software and associated documentation files (the "Software"), to deal in the Software without restriction, including without limitation the rights to use, copy, modify, merge, publish, distribute, and/or sell copies of the Software, and to permit persons to whom the Software is furnished to do so, provided that the above copyright notice(s) and this permission notice appear in all copies of the Software and that both the above copyright notice(s) and this permission notice appear in supporting documentation. THE SOFTWARE IS PROVIDED "AS IS," WITHOUT WARRANTY OF ANY KIND, EXPRESS OR IMPLIED, INCLUDING BUT NOT LIMITED TO THE WARRANTIES OF MERCHANTABILITY, FITNESS FOR A PARTICULAR PURPOSE AND NONINFRINGEMENT OF THIRD PARTY RIGHTS. IN NO EVENT SHALL THE COPYRIGHT HOLDER OR HOLDERS INCLUDED IN THIS NOTICE BE LIABLE FOR ANY CLAIM, OR ANY SPECIAL INDIRECT OR CONSEQUENTIAL DAMAGES, OR ANY DAMAGES WHATSOEVER RESULTING FROM LOSS OF USE, DATA OR PROFITS, WHETHER IN AN ACTION OF CONTRACT, NEGLIGENCE OR OTHER TORTIOUS ACTION, ARISING OUT OF OR IN CONNECTION WITH THE USE OR PERFORMANCE OF THIS SOFTWARE. Except as contained in this notice, the name of a copyright holder shall not be used in advertising or otherwise to promote the sale, use or other dealings in this Software without prior written authorization of the copyright holder.

All trademarks and registered trademarks mentioned herein are the property of their respective owners.

Sun's JAXB Implementation – JSDK 1.5 relaxngDatatype.jar 1.0 License

Copyright © 2001, Thai Open Source Software Center Ltd, Sun Microsystems. All rights reserved.

THIS SOFTWARE IS PROVIDED BY THE COPYRIGHT HOLDERS AND CONTRIBUTORS "AS IS" AND ANY EXPRESS OR IMPLIED WARRANTIES, INCLUDING, BUT NOT LIMITED TO, THE IMPLIED WARRANTIES OF MERCHANTABILITY AND FITNESS FOR A PARTICULAR PURPOSE ARE DISCLAIMED. IN NO EVENT SHALL THE REGENTS OR CONTRIBUTORS BE LIABLE FOR ANY DIRECT, INDIRECT, INCIDENTAL, SPECIAL, EXEMPLARY, OR CONSEQUENTIAL DAMAGES (INCLUDING, BUT NOT LIMITED TO, PROCUREMENT OF SUBSTITUTE GOODS OR SERVICES; LOSS OF USE, DATA, OR PROFITS; OR BUSINESS INTERRUPTION) HOWEVER CAUSED AND ON ANY THEORY OF LIABILITY, WHETHER IN CONTRACT, STRICT LIABILITY, OR TORT (INCLUDING NEGLIGENCE OR OTHERWISE) ARISING IN ANY WAY OUT OF THE USE OF THIS SOFTWARE, EVEN IF ADVISED OF THE POSSIBILITY OF SUCH DAMAGE.

W3C IPR SOFTWARE NOTICE

Copyright © 2000 World Wide Web Consortium, (Massachusetts Institute of Technology, Institut National de Recherche en Informatique et en Automatique, Keio University). All Rights Reserved.

Note: The original version of the W3C Software Copyright Notice and License could be found at <http://www.w3.org/Consortium/Legal/copyright-software-19980720>.

THIS SOFTWARE AND DOCUMENTATION IS PROVIDED "AS IS," AND COPYRIGHT HOLDERS MAKE NO REPRESENTATIONS OR WARRANTIES, EXPRESS OR IMPLIED, INCLUDING BUT NOT LIMITED TO, WARRANTIES OF MERCHANTABILITY OR FITNESS FOR ANY PARTICULAR PURPOSE OR THAT THE USE OF THE SOFTWARE OR DOCUMENTATION WILL NOT INFRINGE ANY THIRD PARTY PATENTS, COPYRIGHTS, TRADEMARKS OR OTHER RIGHTS. COPYRIGHT HOLDERS WILL NOT BE LIABLE FOR ANY DIRECT, INDIRECT, SPECIAL OR CONSEQUENTIAL DAMAGES ARISING OUT OF ANY USE OF THE SOFTWARE OR DOCUMENTATION.

Contents

Preface

| | |
|---------------------------------------|-----------|
| About This Documentation..... | ix |
| Understanding This Documentation..... | ix |
| Audience..... | ix |
| Related Information..... | ix |

Chapter 1

| | |
|--|----------|
| Converting From EPM 8.8x to FSCM 9.0 MP5..... | 1 |
| Understanding Converting Data..... | 1 |
| Preparing for the Planning Upgrade | 1 |
| Reviewing Guidelines Before Upgrading..... | 1 |
| Updating Configuration Manager Profile | 2 |
| Exporting SPL Data From EPM 8.8x | 3 |
| Running the Export Script | 4 |
| Running the Export SQR | 4 |
| Exporting DPIP Data From EPM 8.8x | 5 |
| Running the Export Script DLEPMDPM01E | 5 |
| Running the Export Script DLEPMDPM02E | 5 |
| Running the Export Script DLEPMDPM04E | 6 |
| Updating Configuration Manager Again..... | 6 |
| Editing DB2 Import Scripts | 8 |
| Importing SPL Data Into FSCM 9.0 MP5 | 8 |
| Running the Import Script DLEPMPLM01I | 8 |
| Running the Import SQR | 9 |
| Importing DPIP Data Into FSCM 9.0 MP5 | 9 |
| Running the Import Script DLEPMDPM01I | 9 |
| Running the Import Script DLEPMDPM02I..... | 9 |
| Running the Import Script DLEPMDPM04I | 10 |
| Running Data Conversion for Group 1 | 10 |
| Finalizing SPL Conversion | 11 |

| | |
|--------------------|-----------|
| Index | 13 |
|--------------------|-----------|

About This Documentation

Understanding This Documentation

This documentation is for customers who have implemented PeopleSoft Enterprise Performance Management (EPM) 8.8x along with PeopleSoft Enterprise Supply Chain Planning. It supplements PeopleSoft Enterprise Financials/Supply Chain Management 9.0 MP5 upgrade documentation.

Audience

This documentation assumes you have a basic understanding of the PeopleSoft system. One of the most important components to a successful upgrade of your PeopleSoft installation is your onsite experience. Oracle recommends that, prior to performing this upgrade, you have completed at least one PeopleSoft introductory training course.

You should be familiar with your operating hardware environment and have the necessary skills to support that environment. You should also have a working knowledge of SQL and SQL command syntax. Familiarity with navigating around the system and adding, updating, and deleting information using PeopleSoft windows, menus, and pages is necessary. You should also be comfortable using the World Wide Web and the Microsoft® Windows or Windows NT graphical user interface.

See Also

PeopleSoft Customer Connection (Oracle University)

Related Information

You can review related information that may help with your PeopleSoft upgrade. You can find the following information on PeopleSoft Customer Connection. We post updates and other items on PeopleSoft Customer Connection as well.

- **Release Notes.** Read the Release Notes, prior to starting your upgrade, to determine what has changed in the system, and to familiarize yourself with the new features. The Release Notes also indicate whether you need to upgrade any other portions of your system, such as your RDBMS software or batch files.

See PeopleSoft Customer Connection (Site Index, R, release notes, Release, Notes)

- **Upgrades Database.** The Upgrade Documentation database in the Library category of Customer Connection will have other information attained after shipment of this release that may not be included in these instructions. This information may include Updates & Fixes required at upgrade. Always check the Upgrade Documentation database for the most current documentation and information.

See PeopleSoft Customer Connection (Site Index, U, upgrade guide, Upgrade Documentation and Software, Upgrade Documentation and Scripts)

Important! Before upgrading, it is imperative that you check the Upgrade Documentation database on PeopleSoft Customer Connection for updates to the upgrade instructions. We continually post updates as we refine the upgrade process.

See Also

PeopleSoft Customer Connection

CHAPTER 1

Converting From EPM 8.8x to FSCM 9.0 MP5

This chapter discusses:

- Understanding Converting Data
- Preparing for the Planning Upgrade
- Exporting SPL Data From EPM 8.8x
- Exporting DPIP Data From EPM 8.8x
- Updating Configuration Manager Again
- Editing DB2 Import Scripts
- Importing SPL Data Into FSCM 9.0 MP5
- Importing DPIP Data Into FSCM 9.0 MP5
- Running Data Conversion for Group 1
- Finalizing SPL Conversion

Understanding Converting Data

To convert Planning data from EPM 8.8x to FSCM 9.0 MP5, you must export the Planning data from the EPM database and then import it into the FSCM 9.0 MP5 database.

Note. In this document, “DPIP” is used to refer to Demand Planning and Inventory Policy Planning, and “SPL” is used to refer to Supply Chain Planning. “Source” refers to the EPM 8.8x database, and “Target” refers to the FSCM 9.0 MP5 database.

Task 1-1: Preparing for the Planning Upgrade

This section discusses:

- Reviewing Guidelines Before Upgrading
- Updating Configuration Manager Profile

Task 1-1-1: Reviewing Guidelines Before Upgrading

Review the following guidelines before starting your upgrade:

- Have Documentation available

Have copies of PeopleSoft 9.0 Supply Planning, PeopleSoft Demand Planning, and PeopleSoft Inventory Policy Planning PeopleBooks readily available.

- Complete all in-process data transfers

All data transfers in PeopleSoft Supply Planning and PeopleSoft Demand Planning must be completed before the upgrade process begins. This includes all published policies for PeopleSoft Inventory Policy Planning and all forecasts for Demand Planning. The system does not convert transferred data to the new FSCM 9.0 MP5 database, since the data that is in the EPM staging tables is not upgraded to the SCM database.

- Run period-end processing

PeopleSoft strongly recommends that you convert your system immediately after a period-end process has been completed.

- Freeze production

You need to freeze production on your old databases during the tasks “Exporting SPL Data From EPM 8.8x” and “Exporting DPIIP Data From EPM 8.8x.”

Properties

| Database Orientation | Initial or MTP | Products | Platforms | Languages |
|----------------------|----------------|---|-----------|-----------|
| Source | Both | Demand Planning Inventory Policy Planning Supply Planning | All | All |

Task 1-1-2: Updating Configuration Manager Profile

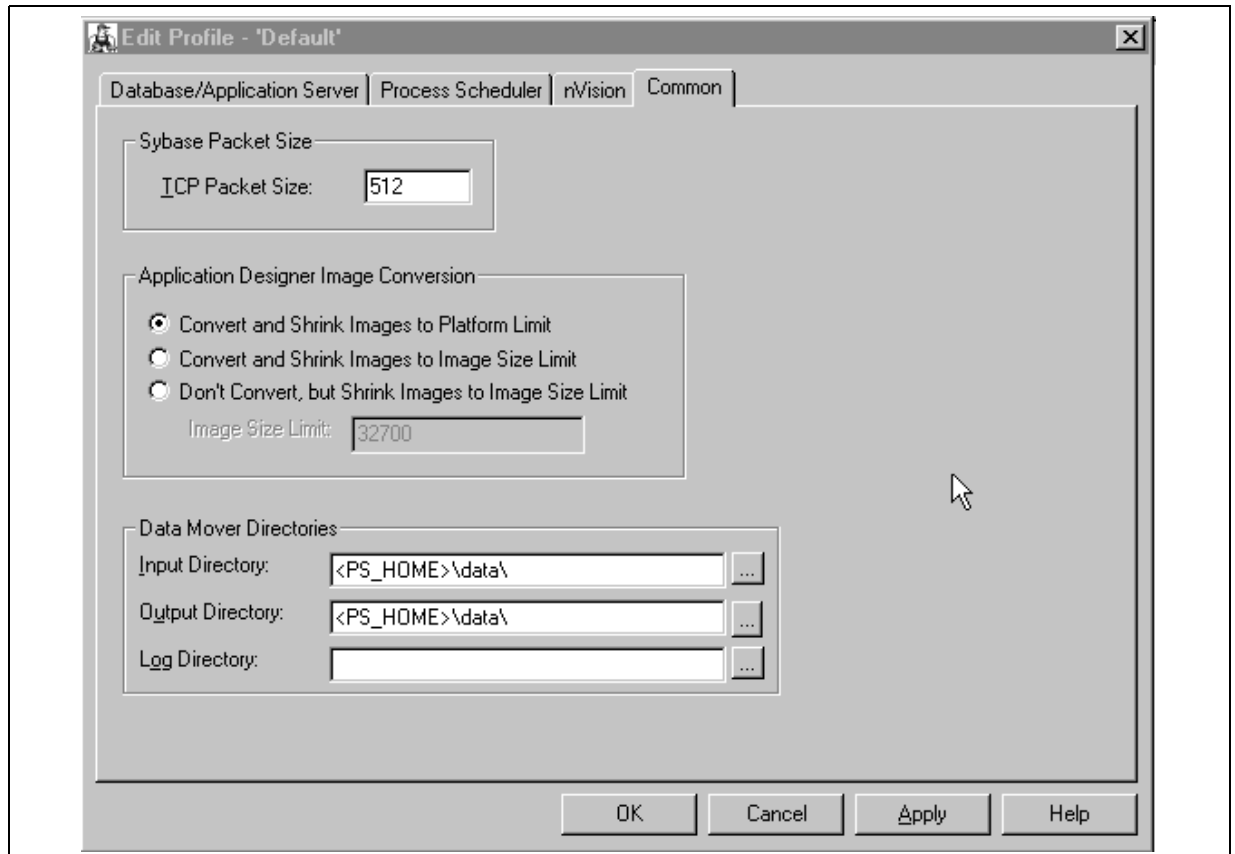
The Configuration Manager default profile needs to be updated to use values for your old release EPM PS_HOME. Change Assistant uses this information to run automated steps for the rest of the upgrade. These are settings on the workstation, and you need to do this for each workstation you may use during the upgrade.

The following scripts and sqs must be copied from your new release FSCM PS_HOME to your old release EPM PS_HOME:

```
UVPLX98E.SQR
DLEPPLM01E.DMS
DLEPDPM01E.DMS
DLEPDPM02E.DMS
DLEPDPM04E.DMS
```

To update the profile:

1. Open Configuration Manager.
2. On the Profile tab, select the Default profile, click Edit, and select the Common tab.



Edit Profile - Default dialog box

Note. The Input Directory must be <PS_HOME>\data\, substituting <PS_HOME> with your directory. The Output Directory must be the same.

3. The Log Directory is set by Change Assistant and should be left as is.
4. Select the Process Scheduler tab and verify your SQR settings. Change Assistant will use these settings to launch SQR.

Properties

| Database Orientation | Initial or MTP | Products | Platforms | Languages |
|----------------------|----------------|---|-----------|-----------|
| Source | Both | Demand Planning Inventory Policy Planning Supply Planning | All | All |

Task 1-2: Exporting SPL Data From EPM 8.8x

This section discusses:

- Running the Export Script
- Running the Export SQR

Task 1-2-1: Running the Export Script

This step runs the DLEPMPLM01E.DMS script to export data from PeopleSoft Supply Planning tables in the EPM 8.8x database. The data is exported to DLEPMPLM01E.DAT.

Properties

| Database Orientation | Initial or MTP | Products | Platforms | Languages |
|----------------------|----------------|-----------------|-----------|-----------|
| Source | Both | Supply Planning | All | All |

Task 1-2-2: Running the Export SQR

In this step, you run UVPLX98E.SQR to export data from seven PeopleSoft Supply Planning tables in the EPM 8.8x database.

The data is exported to data files from the following tables:

- INSTALLATION_PL
- OPR_DEF_TBL_PL
- PS_PL_PROBINST_HDR
- PS_PL_WB_ROWTYPE
- PS_PL_WB_TMPLATE_D
- PS_PL_WB_TMPLATE_H
- PS_PL_WB_TMPLATE_T

The data files names for the records above are as follows:

- INSTPL.DAT
- OPRDEFTBLPL.DAT
- PLPROBIHDR.DAT
- PLWBROWT.DAT
- WBTMPD.DAT
- WBTMPH.DAT
- WBTMPT.DAT

Properties

| Database Orientation | Initial or MTP | Products | Platforms | Languages |
|----------------------|----------------|-----------------|-----------|-----------|
| Source | Both | Supply Planning | All | All |

Task 1-3: Exporting DPIP Data From EPM 8.8x

This section discusses:

- Running the Export Script DLEPMDPM01E
- Running the Export Script DLEPMDPM02E
- Running the Export Script DLEPMDPM04E

Task 1-3-1: Running the Export Script DLEPMDPM01E

In this step, you run the DLEPMDPM01E.DMS script to export data from PeopleSoft Demand Planning and Inventory Policy Planning tables in the EPM 8.8x database. The data is exported to DLEPMDPM01E.DAT.

Properties

| Database Orientation | Initial or MTP | Products | Platforms | Languages |
|----------------------|----------------|--|-----------|-----------|
| Source | Both | Demand Planning Inventory Policy Planning | All | All |

Task 1-3-2: Running the Export Script DLEPMDPM02E

You must run this step only if you are implementing EPM 8.8 Service Pack 1 (8.81) or higher.

In this task, you run the DLEPMDPM02E.DMS script to export data from PeopleSoft Demand Planning and Inventory Policy Planning tables in the EPM 8.8x database. The data is exported to DLEPMDPM02E.DAT.

Properties

| Database Orientation | Initial or MTP | Products | Platforms | Languages |
|----------------------|----------------|--|-----------|-----------|
| Source | Both | Demand Planning Inventory Policy Planning | All | All |

Task 1-3-3: Running the Export Script DLEPMDPM04E

You must run this task only if you are implementing EPM 8.8 Service Pack 2 (8.82) and have applied resolution #588570.

In this step, you run the DLEPMDPM04E.DMS script to export data from PeopleSoft Demand Planning and Inventory Policy Planning tables in the EPM 8.8x database. The data is exported to DLEPMDPM04E.DAT.

Properties

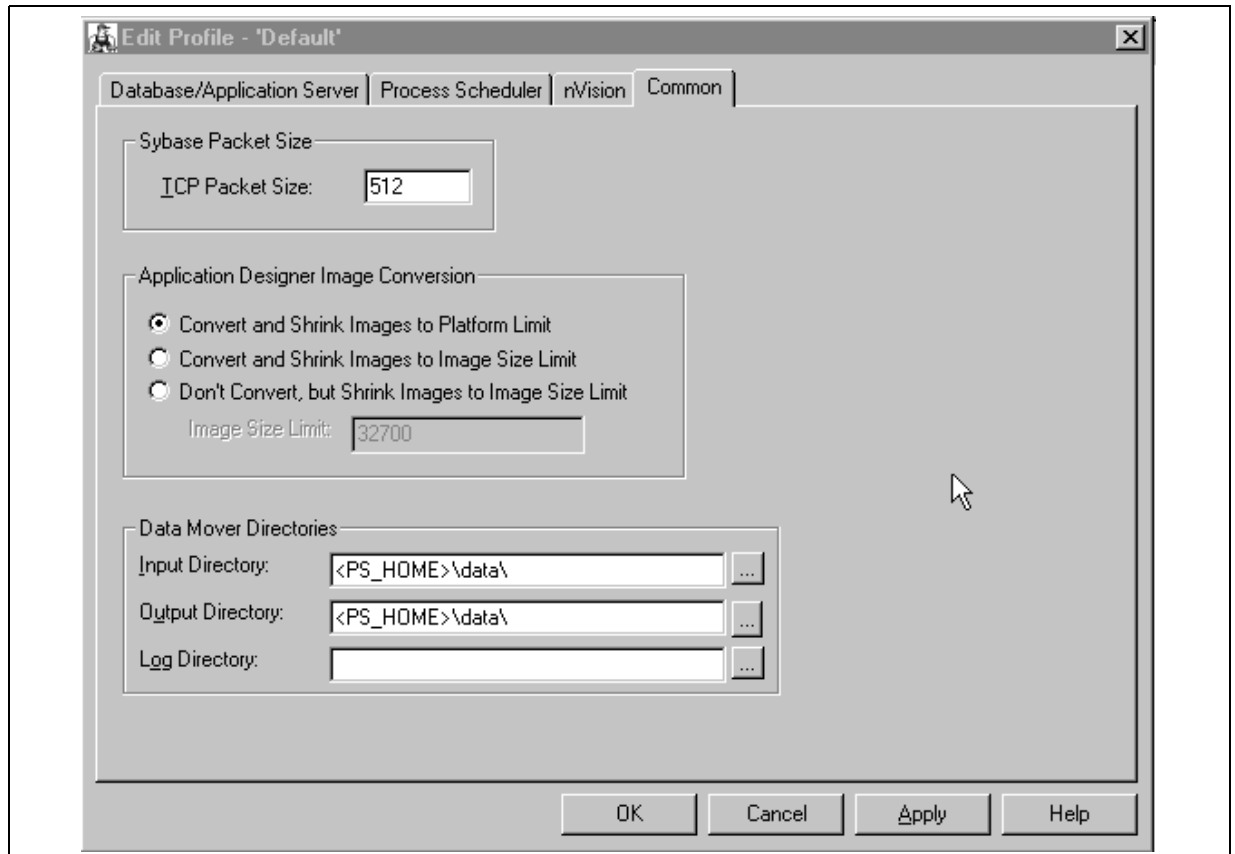
| Database Orientation | Initial or MTP | Products | Platforms | Languages |
|----------------------|----------------|--|-----------|-----------|
| Source | Both | Demand Planning Inventory Policy Planning | All | All |

Task 1-4: Updating Configuration Manager Again

The Configuration Manager default profile needs to be updated to use values for your *new* release FSCM 9.0 MP5 PS_HOME. Change Assistant uses this information to run automated steps for the rest of the upgrade. These are settings on the workstation, and you need to do this for each workstation you may use during the upgrade.

To update the profile:

1. Open Configuration Manager.
2. On the Profile tab, select the Default profile, click Edit, and select the Common tab.



Edit Profile - Default dialog box

Note. The Input Directory must be <PS_HOME>\data\, substituting <PS_HOME> with your directory. The Output Directory must be the same.

3. The Log Directory is set by Change Assistant and should be left as is.
4. Select the Process Scheduler tab and verify your SQR settings. Change Assistant will use these settings to launch SQR.

Properties

| Database Orientation | Initial or MTP | Products | Platforms | Languages |
|----------------------|----------------|---|-----------|-----------|
| Target | Both | Demand Planning Inventory Policy Planning Supply Planning | All | All |

Task 1-5: Editing DB2 Import Scripts

Perform this step only if your database platform is DB2 z/OS. DB2 z/OS scripts that create tables need a `set current sqld` statement so that the tables are created with the correct owner ID.

Open each script listed below, then uncomment and modify all the DB2-specific statements to reflect your environment.

Following is a list of scripts that you need to edit:

- DLEPMPLM01I.DMS
- DLEPMDPM01I.DMS
- DLEPMDPM02I.DMS—only if you have applied EPM 8.8 Service Pack 1 (8.81) or higher
- DLEPMDPM04I.DMS—only if you have applied EPM 8.8 Service Pack 2 (8.82) and have applied resolution #588570

Properties

| Database Orientation | Initial or MTP | Products | Platforms | Languages |
|----------------------|----------------|---|-----------|-----------|
| Target | Both | Demand Planning Inventory Policy Planning Supply Planning | All | All |

Task 1-6: Importing SPL Data Into FSCM 9.0 MP5

This section discusses:

- Running the Import Script DLEPMPLM01I
- Running the Import SQR

Task 1-6-1: Running the Import Script DLEPMPLM01I

In this step, you run the DLEPMPLM01I.DMS script to import data into Financials/Supply Chain Management 9.0 MP5. The data is imported from the DLEPMPLM01E.DAT file.

Properties

| Database Orientation | Initial or MTP | Products | Platforms | Languages |
|----------------------|----------------|-----------------|-----------|-----------|
| Target | Both | Supply Planning | All | All |

Task 1-6-2: Running the Import SQR

In this step you run the SQR, UVPLX98I.SQR, to import the data.

Properties

| Database Orientation | Initial or MTP | Products | Platforms | Languages |
|----------------------|----------------|-----------------|-----------|-----------|
| Target | Both | Supply Planning | All | All |

Task 1-7: Importing DPIIP Data Into FSCM 9.0 MP5

This section discusses:

- Running the Import Script DLEPMDPM01I
- Running the Import Script DLEPMDPM02I
- Running the Import Script DLEPMDPM04I

Task 1-7-1: Running the Import Script DLEPMDPM01I

In this step, you run the DLEPMDPM01I.DMS script to import data from Demand Planning and Inventory Policy Planning tables into Financials/Supply Chain Management 9.0 MP5. The data is imported from the DLEPMDPM01E.DAT file.

Note. You may receive the following error in your log file, DLEPMDPM01I.log, “Cannot drop the table 'UPG_RCFIELD_TMP', because it does not exist in the system catalog.” Ignore this error and proceed with the upgrade. If the table name is not in this structure 'UPG_#####_TMP', where ##### is an abbreviation of the record name, then you must check these errors. The 'UPG_#####_TMP' tables are temporary tables that are being dropped to enable you to run the import script again, if needed.

Properties

| Database Orientation | Initial or MTP | Products | Platforms | Languages |
|----------------------|----------------|--|-----------|-----------|
| Target | Both | Demand Planning Inventory Policy Planning | All | All |

Task 1-7-2: Running the Import Script DLEPMDPM02I

In this step, you run the DLEPMDPM02I.DMS script to import data from Demand Planning and Inventory Policy Planning tables into Financials/Supply Chain Management 9.0 MP5. Run this step only if you have EPM 8.8 Service Pack 1 (8.81) or higher. The data is imported from the DLEPMDPM02E.DAT file.

You can edit your template so that the DLEPMDPM02I script can run automatically.

To run this script automatically:

1. Select this step and open the Step Properties dialog box.
2. Change the Type from ManualStop to DataMoverBootstrap .
3. Click OK.
4. In your upgrade job, mark the step as Run.

Properties

| Database Orientation | Initial or MTP | Products | Platforms | Languages |
|----------------------|----------------|--|-----------|-----------|
| Target | Both | Demand Planning Inventory Policy Planning | All | All |

Task 1-7-3: Running the Import Script DLEPMDPM04I

In this step, you run the DLEPMDPM04I.DMS script to import data from Demand Planning and Inventory Policy Planning tables into Financials/Supply Chain Management 9.0 MP5. Run this step only if you have applied EPM 8.8 Service Pack 2 (8.82) and have applied resolution #588570. The data is imported from the DLEPMDPM04E.DAT file.

You can edit your template so that the DLEPMDPM04I script can run automatically.

To run this script automatically:

1. Select this step and open the Step Properties dialog box.
2. Change the Type from ManualStop to DataMoverBootstrap .
3. Click OK.
4. In your upgrade job, mark the step as Run.

Properties

| Database Orientation | Initial or MTP | Products | Platforms | Languages |
|----------------------|----------------|--|-----------|-----------|
| Target | Both | Demand Planning Inventory Policy Planning | All | All |

Task 1-8: Running Data Conversion for Group 1

This step runs the UPG_DATACONV Application Engine program for Group 1 to convert data imported from the EPM 8.8x database.

Properties

| Database Orientation | Initial or MTP | Products | Platforms | Languages |
|----------------------|----------------|---|-----------|-----------|
| Target | Both | Supply Planning Demand Planning Inventory Policy Planning | All | All |

Task 1-9: Finalizing SPL Conversion

This step will complete the Supply Planning data conversion.

To complete the Supply Planning data conversion:

1. Select Set Up Financials/Supply Chain, Upgrade, Supply Planning Post Upgrade.
2. Add a new run control ID, or use an existing one.
3. Click Run to execute the script.

Properties

| Database Orientation | Initial or MTP | Products | Platforms | Languages |
|----------------------|----------------|-----------------|-----------|-----------|
| Target | Both | Supply Planning | All | All |

Index

C

Configuration Manager profile,
 updating 2

D

data conversion, running for group 1 10
DB2 import scripts, editing 8
Demand Planning data
 exporting 5
 importing 9
DLEPMDPM01E script, running 5
DLEPMDPM01I script, running 9
DLEPMDPM02E script, running 5
DLEPMDPM04E script, running 6
DLEPMPLM01E script, running 4
DLEPMPLM01I script, running 8

E

editing DB2 import scripts 8
exporting
 Demand Planning data 5
 Inventory Policy Planning data 5
 Supply Planning data 3

F

finalizing SPL conversion 11

I

importing
 Demand Planning data 9
 Inventory Policy Planning data 9
 Supply Planning data 8
Inventory Policy Planning data
 exporting 5
 importing 9

P

Planning upgrade, preparing for 1
preparing
 Planning upgrade 1

R

running
 data conversion for group 1 10

DLEPMDPM01E script 5
DLEPMDPM01I script 9
DLEPMDPM02E script 5
DLEPMDPM02I script 9
DLEPMDPM04E script 6
DLEPMDPM04I script 10
DLEPMPLM01E script 4
DLEPMPLM01I script 8
UVPLX98E 4
UVPLX98I import SQR 9

S

SPL conversion, finalizing 11
Supply Planning data
 exporting 3
 importing 8

U

updating Configuration Manager profile 2
UVPLX98E, running 4
UVPLX98I import SQR
 running 9

