

Oracle Insurance

**Data Capture
SoftRater for WebLogic
Installation Guide**

Release 5.1

May 2013

Copyright © 2005, 2013, Oracle and/or its affiliates. All rights reserved.

Oracle Insurance Insbridge Data Capture SoftRater for WebLogic Installation Guide

Release 5.1

Part # E39430-01

Library # E39498-01

May 2013

Primary Authors: Mary Elizabeth Wiger

Oracle and Java are registered trademarks of Oracle and/or its affiliates. Other names may be trademarks of their respective owners.

This software and related documentation are provided under a license agreement containing restrictions on use and disclosure and are protected by intellectual property laws. Except as expressly permitted in your license agreement or allowed by law, you may not use, copy, reproduce, translate, broadcast, modify, license, transmit, distribute, exhibit, perform, publish, or display any part, in any form, or by any means. Reverse engineering, disassembly, or decompilation of this software, unless required by law for interoperability, is prohibited.

The information contained herein is subject to change without notice and is not warranted to be error-free. If you find any errors, please report them to us in writing.

If this software or related documentation is delivered to the U.S. Government or anyone licensing it on behalf of the U.S. Government, the following notice is applicable:

U.S. GOVERNMENT END USERS: Oracle programs, including any operating system, integrated software, any programs installed on the hardware, and/or documentation, delivered to U.S. Government end users are "commercial computer software" pursuant to the applicable Federal Acquisition Regulation and agency-specific supplemental regulations. As such, use, duplication, disclosure, modification, and adaptation of the programs, including any operating system, integrated software, any programs installed on the hardware, and/or documentation, shall be subject to license terms and license restrictions applicable to the programs. No other rights are granted to the U.S. Government.

This software or hardware is developed for general use in a variety of information management applications. It is not developed or intended for use in any inherently dangerous applications, including applications that may create a risk of personal injury. If you use this software or hardware in dangerous applications, then you shall be responsible to take all appropriate failsafe, backup, redundancy, and other measures to ensure its safe use. Oracle Corporation and its affiliates disclaim any liability for any damages caused by use of this software or hardware in dangerous applications.

This software or hardware and documentation may provide access to or information on content, products and services from third parties. Oracle Corporation and its affiliates are not responsible for and expressly disclaim all warranties of any kind with respect to third-party content, products, and services. Oracle Corporation and its affiliates will not be responsible for any loss, costs, or damages incurred due to your access to or use of third-party content, products, or services.

Where an Oracle offering includes third party content or software, we may be required to include related notices. For information on third party notices and the software and related documentation in connection with which they need to be included, please contact the attorney from the Development and Strategic Initiatives Legal Group that supports the development team for the Oracle offering. Contact information can be found on the Attorney Contact Chart.

The information contained in this document is for informational sharing purposes only and should be considered in your capacity as a customer advisory board member or pursuant to your beta trial agreement only. It is not a commitment to deliver any material, code, or functionality, and should not be relied upon in making purchasing decisions. The development, release, and timing of any features or functionality described in this document remains at the sole discretion of Oracle.

This document in any form, software or printed matter, contains proprietary information that is the exclusive property of Oracle. Your access to and use of this confidential material is subject to the terms and conditions of your Oracle Software License and Service Agreement, which has been executed and with which you agree to comply. This document and information contained herein may not be disclosed, copied, reproduced, or distributed to anyone outside Oracle without prior written consent of Oracle. This document is not part of your license agreement nor can it be incorporated into any contractual agreement with Oracle or its subsidiaries or affiliates.

CONTENTS

PREFACE	IV
Audience	iv
Relate Documents	iv
Conventions	iv
Manual History	v

QUICK VIEW

SOFTTRATER FOR WEBLOGIC INSTALLATION	6
--	---

CHAPTER 2

SETTING UP IBSS IN WEBLOGIC	7
Step 1: Creating a New Server Domain.....	7
Configuration Wizard	8
Step 2: Placing the Configuration Files.....	16
Step 3: Adding a System Property to WL Server.....	17
Adding to the WebLogic Server – Windows	17
Adding to the WebLogic Server – Linux	18
Step 4: Starting the WebLogic Server	19
Accessing the WebLogic Main Console	19
Step 5: Installation of the .EAR File	20

SUPPORT

CONTACTING SUPPORT	22
TTY Access to Oracle Support Services	22

INDEX

INDEX	23
-------------	----

LIST OF FIGURES

FIGURE 1 CREATING A NEW SERVER DOMAIN IN WINDOWS.....	7
FIGURE 2 CREATING NEW WEBLOGIC DOMAIN	8
FIGURE 3 SELECTING DOMAIN SOURCE	9
FIGURE 4 SPECIFYING DOMAIN NAME AND LOCATION.....	10
FIGURE 5 CREATING USER NAME AND PASSWORD.....	11
FIGURE 6 CONFIGURING SERVER START MODE AND JDK.....	12
FIGURE 7 CUSTOMIZING ENVIRONMENT AND SERVICE SETTINGS	13
FIGURE 8 CREATING WEBLOGIC DOMAIN.....	14
FIGURE 9 START MENU	15
FIGURE 10 STARTWEBLOGIC.CMD FILE	17
FIGURE 11 – EDITING STARTWEBLOGIC.CMD FILE.....	18
FIGURE 12 – EDITED STARTWEBLOGIC.CMD FILE	18
FIGURE 13 LOGGING INTO WEBLOGIC SERVER.....	19
FIGURE 14 SELECT THE APPLICATION .EAR	20
FIGURE 15 – VERIFY APPLICATION INSTALLATION.....	20
FIGURE 16 – SUCCESSFUL INSTALLATION.....	21

PREFACE

Welcome to *Oracle Insurance Insbridge Data Capture SoftRater for WebLogic Installation Guide*. This guide describes how to install and configure SoftRater for WebLogic Server 10.3.6 for Oracle Insurance Data Capture.

The Insbridge SoftRater Server (IBSS) is the container for all Insbridge web components including the SoftRater Engine. All independent Insbridge components will be contained in the IBSS.

NOTE: *SoftRater for WebLogic has been tested and supports WebLogic 11gR1 (10.3.6) utilizing Oracle Linux 5.8 64-bit.*

AUDIENCE

This guide is intended for technical personnel, such as installers, system administrators and others tasked with configuring SoftRater that would be involved in the maintenance and operation of SoftRater or Data Capture. The audience for this guide should have a thorough knowledge of WebLogic.

RELATE DOCUMENTS

For more information, refer to the following Oracle resources:

- The Oracle Insurance Data Capture Install Guide.
- The Oracle Insurance Insbridge Rating and Underwriting SoftRater Server Guide.
- You can view these guides online at this address:

<http://www.oracle.com/technetwork/documentation/insurance-097481.html>

CONVENTIONS

This document may reference the following abbreviations:

- **WL:** WebLogic Server
- **JNDI:** Java Naming and Directory Interface

The following text conventions are used in this document:

Convention	Description
bold	Boldface type indicates graphical user interface elements associated with an action.
<i>italic</i>	Italic type indicates book titles, emphasis, or placeholder variables for which you supply particular values.
<code>monospace</code>	Monospace type indicates commands within a paragraph, URLs, code in examples, text that appears on the screen, or text that you enter.

Manual History

New editions incorporate any updates issued since the previous edition.

Edition	Publication Number	Product Release	Publication Date	Comment
1 st Edition	P01-210-01	V 5.1	May 2013	WebLogic 10.3.6

SOFTRATER FOR WEBLOGIC INSTALLATION

Installing SoftRater for WebLogic requires that you:

Set up WebLogic and deploy the SoftRater for WebLogic .EAR file and config file. There are six steps in setting up WebLogic and deploying SoftRater.

Setting up and Deploying in WebLogic

Step 1: Creating a New Server Domain

Step 2: Placing the Configuration Files

Step 3: Adding a System Property to WL Server

Step 4: Starting the WebLogic Server

Step 5: Installation of the .EAR File

SETTING UP IBSS IN WEBLOGIC

WebLogic 10.3.6 should be up and running prior to deploying the .EAR file. There are five required steps for setting up IBSS in WebLogic and one optional step.

- **Step 1:** IBSS requires a separate domain from OI DC. **This is a required step.**
- **Step 2:** The Configuration Files must be placed in a static location. **This is a required step.**
- **Step 3:** A System Property must be added to the WebLogic Server. **This is a required step.**
- **Step 4:** Starting the WebLogic Server. **This is a required step.**
- **Step 5:** Installation of the .EAR File. **This is a required step.**
- **Step 6:** Setting up a SoftLibray in IBSS. This is an optional step and can be performed at a later time.

STEP 1: CREATING A NEW SERVER DOMAIN

IBSS is an .EAR file that is deployed in a WebLogic instance. WebLogic 10.3.6 should be up and running prior to deploying the .EAR file. It is recommended that IBSS be placed in a domain that is separate from other applications to reduce the possibility of conflict.

In Windows

To create a new server domain:

Start Menu→Oracle WebLogic→WebLogic Server 11gR1→Tools→ Configuration Wizard

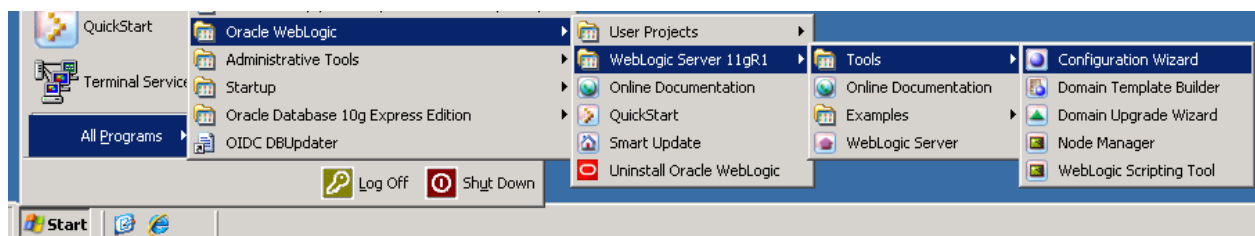


Figure 1 Creating a New Server Domain in Windows

In Linux

To create a new server domain:

Log in as any **non-root installer** and launch the Domain Creation Wizard for WebLogic. For example:

```
cd /home/INSTALLER/Oracle/Middleware/utils/quickstart/quickstart.sh
```

Follow the wizard according to your company standards. In most cases, for the Insbridge application, a default basic configuration could be used.

NOTE: *This is a suggested domain setup. Your setup may vary.*

It is not required that you set up a separate domain. If you do create a separate Insbridge domain, please verify that there are no port issues. The Insbridge .EAR file can be installed on an already existing domain.

CONFIGURATION WIZARD

On the Welcome screen, you will want to create a new WebLogic domain.

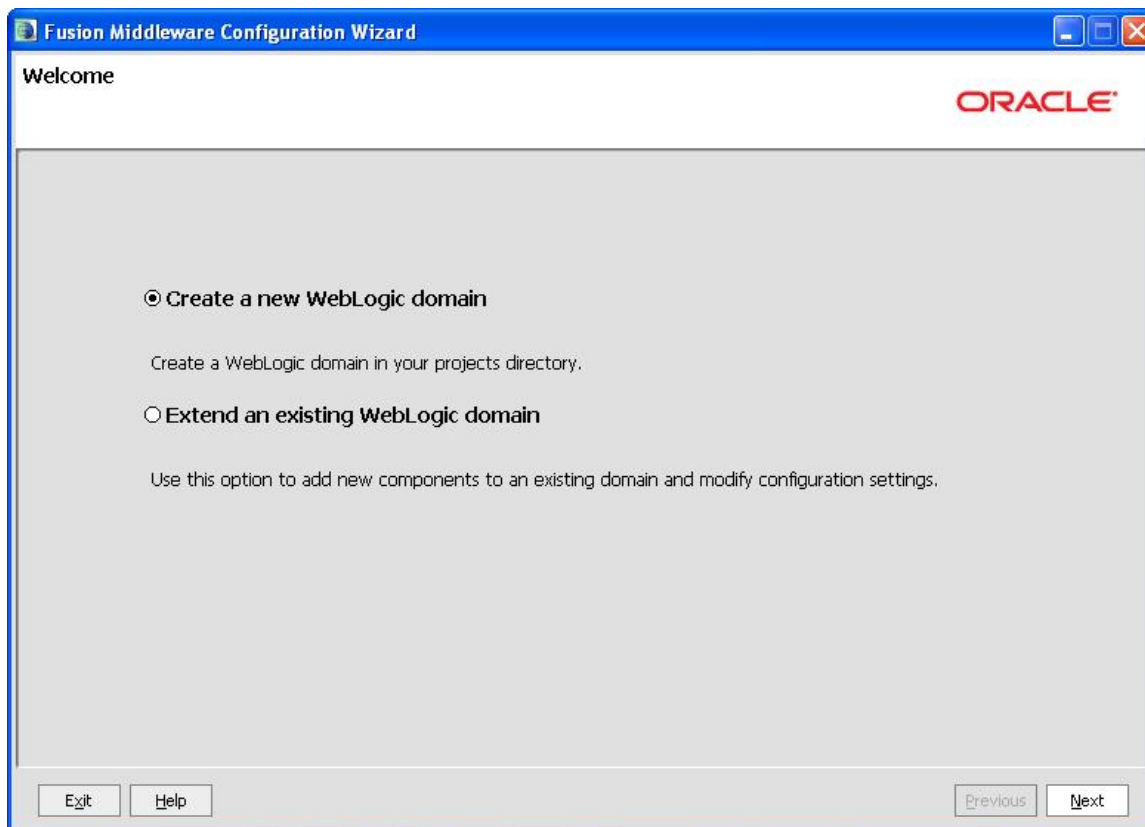


Figure 2 Creating New WebLogic Domain

1. Select **Create a New WebLogic domain**.
2. Click **Next** to advance to the next screen.

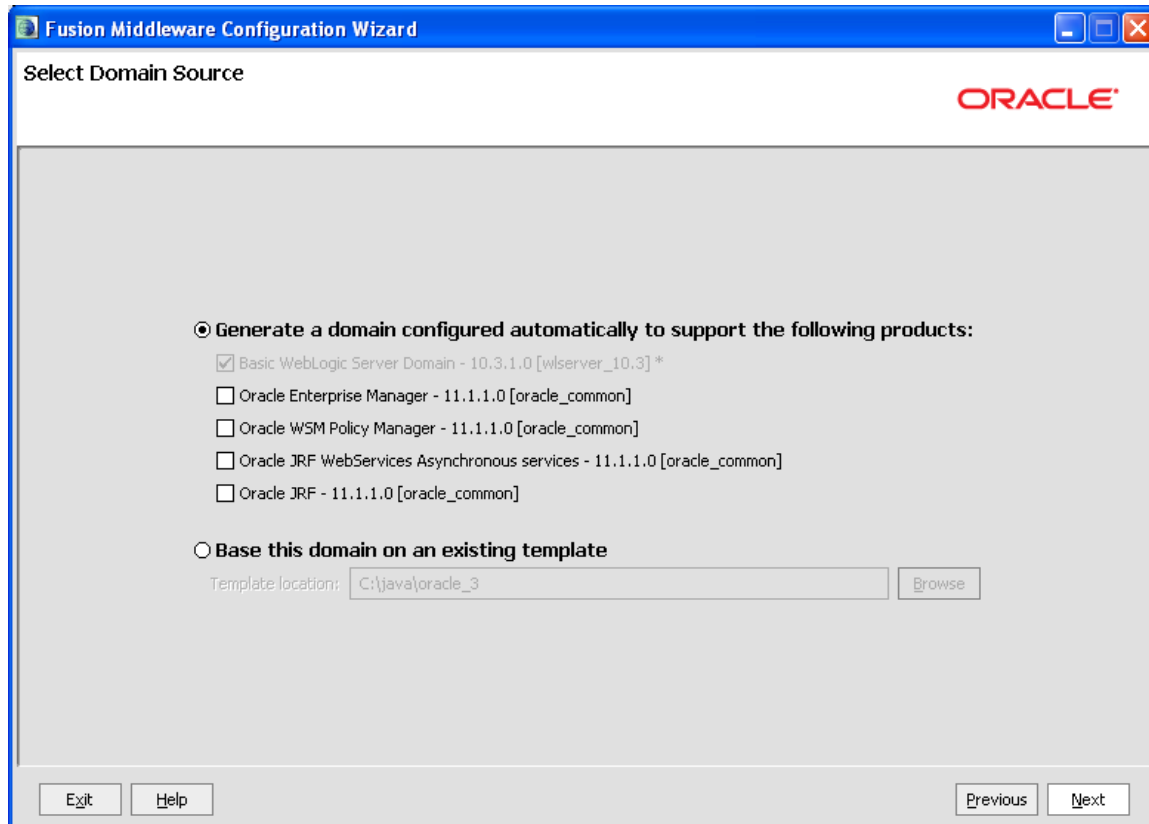


Figure 3 Selecting Domain Source

3. For a basic installation, select **Generate a domain configured automatically to support the following products:** The **WebLogic Server** option is the only option you will need to select.
4. Click **Next** to continue.

NOTE: DO NOT select the Select Oracle JRF - 11.1.1.0 [oracle_common]. *IBSS does NOT require this product.*

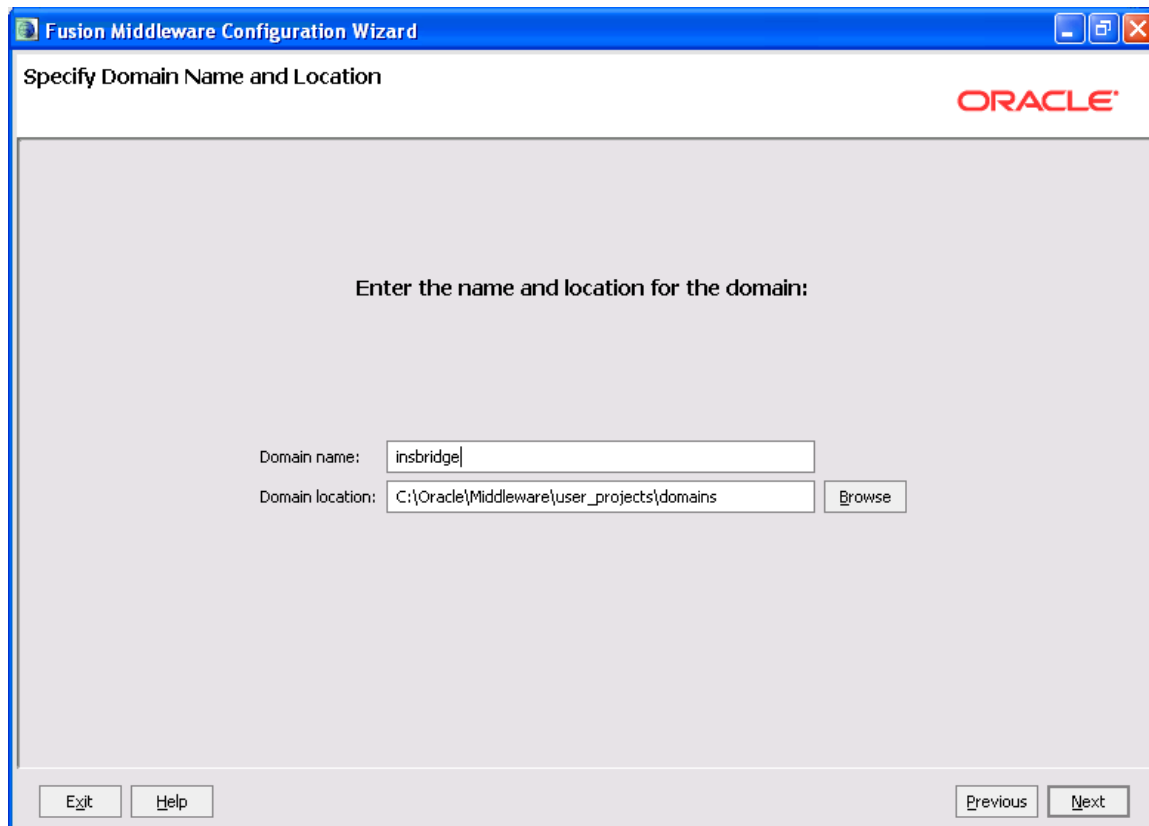


Figure 4 Specifying Domain Name and Location

5. Specify the **Domain Name** and **Location**. The domain name can be anything that meets your company standards.
6. Click **Next** to continue.

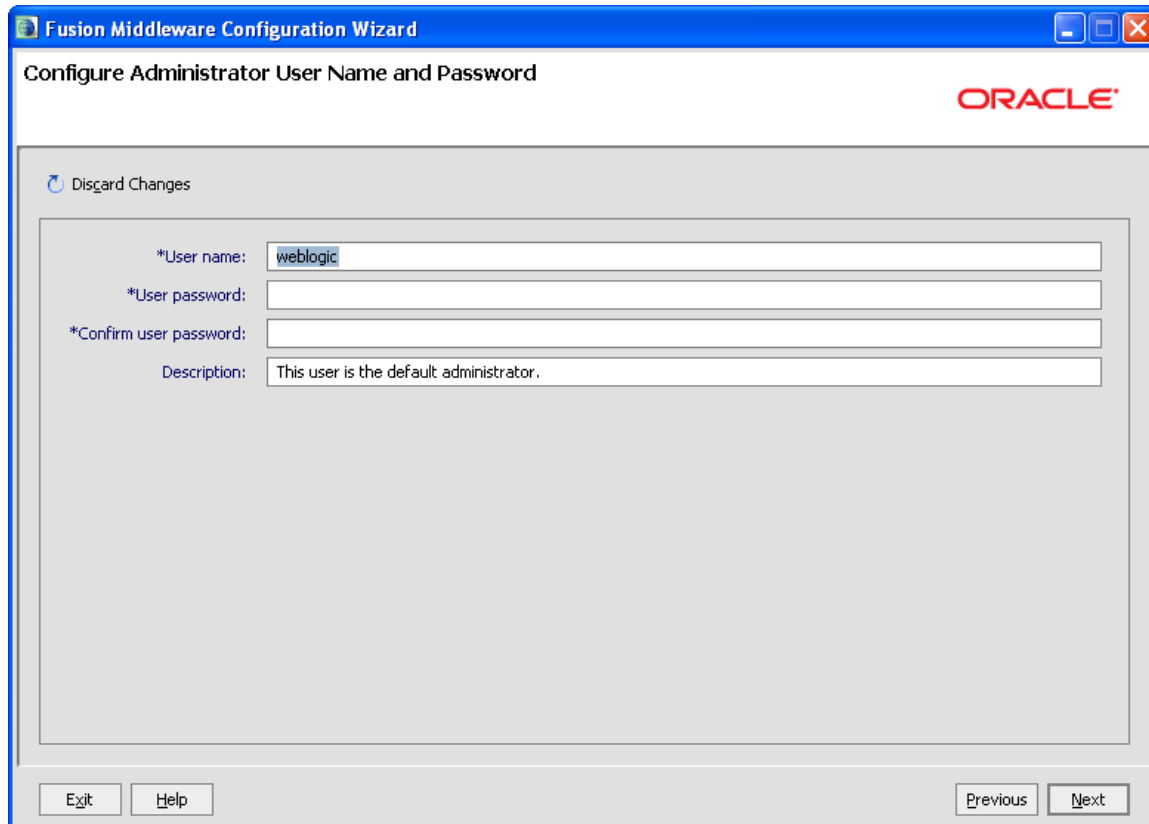


Figure 5 Creating User Name and Password

7. Next, configure the Administrator User name and password. The **User name** and **password** are WebLogic, unless otherwise specified.
8. The **Description** is optional.
9. Click **Next** to continue.

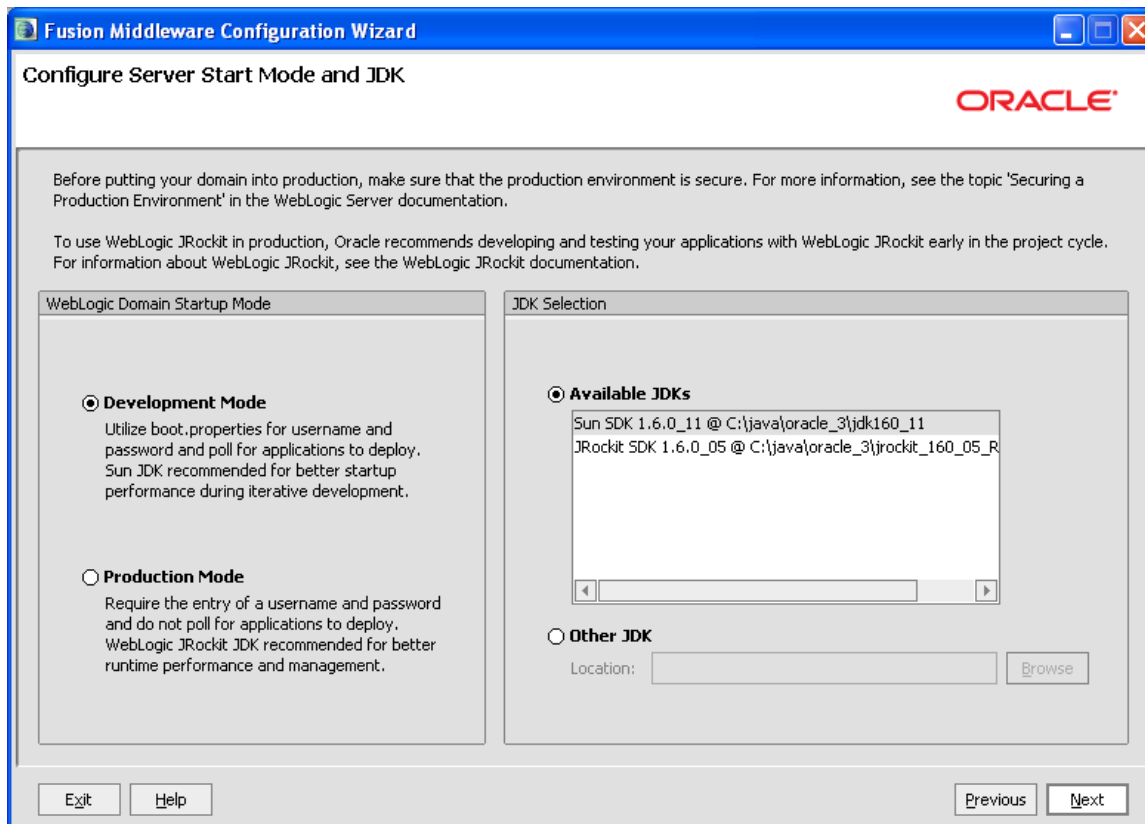


Figure 6 Configuring Server Start Mode and JDK

10. Select **Development Mode** for the Startup Mode.
11. Select the supplied **Sun SDK** in the **Available JDKs** area.
12. Click **Next** to continue.

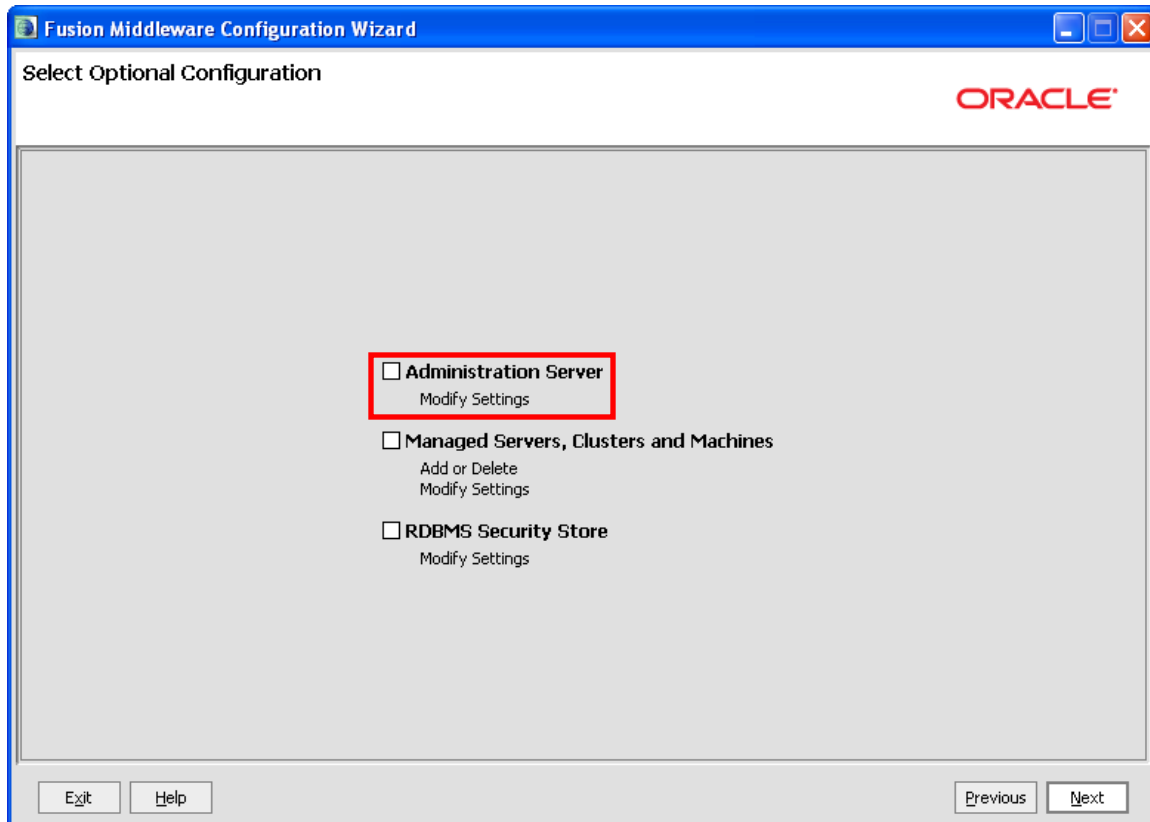


Figure 7 Customizing Environment and Service Settings

13. While not required, it is recommended that IBSS be on a port separate from OIDC. To create a dedicated port for Insbridge, select Administration Server and set the port that you want to use. Make note of the port number you choose. The port number will be required for further installation instructions.
14. Click **Next**.

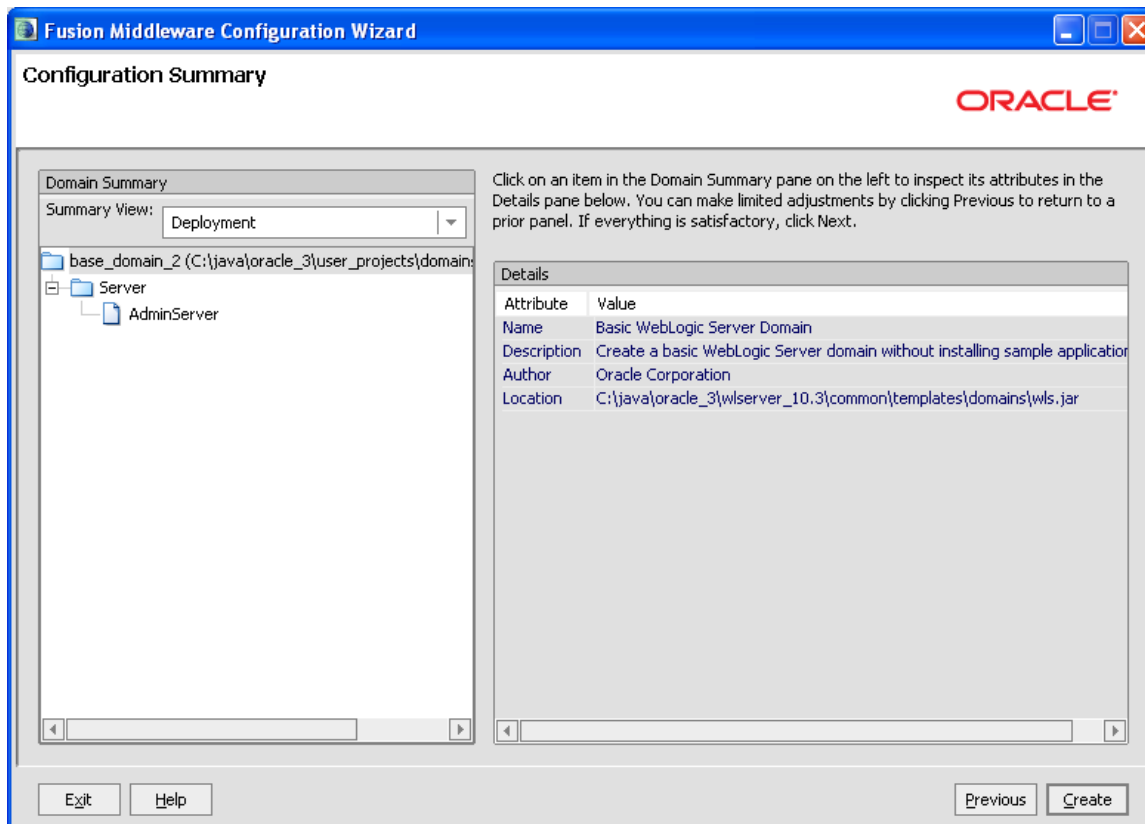


Figure 8 Creating WebLogic Domain

15. No other changes are necessary. Click **Create**.

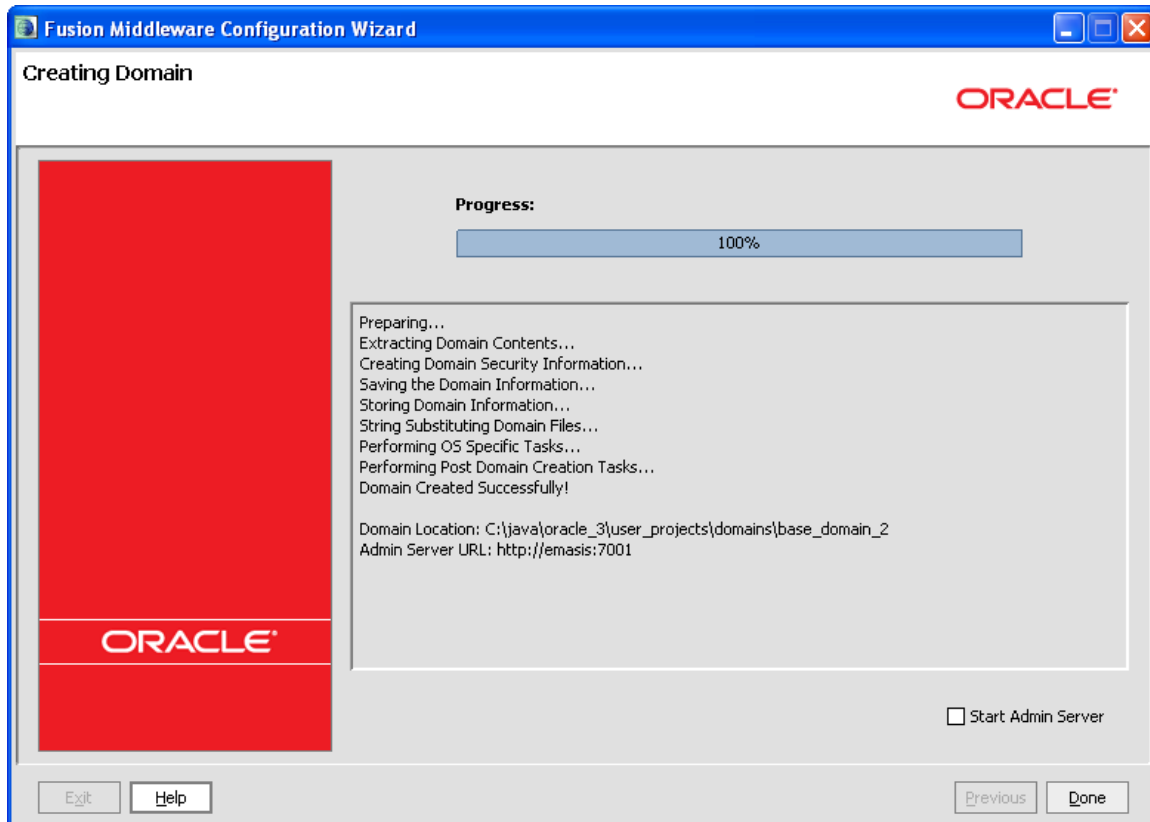


Figure 9 Start Menu

16. WebLogic will begin the creation of the Domain. The progress bar will display 100% when complete.
17. Click **Done** to close the Wizard. The domain is ready to use.

STEP 2: PLACING THE CONFIGURATION FILES

This is a required step. The configuration files must be in place prior to the SoftRater installation.

We suggest creating an Insbridge config folder but you may use any folder name you want and you can place the folder anywhere you want. This folder holds the necessary files for the SoftRater for WebLogic installation. Take note of the location and make sure you have created this folder prior to running the installation.

- For a Windows environment, `C:\Insbridge\config`
- For a Linux environment, `home/Insbridge/config`

NOTE: *For the purposes of this guide, the location will be referred to as `C:\Insbridge\config`.*

The SoftRater for WebLogic zip file should be downloaded to the WebLogic server prior to configuration. Unzip the file. There will be an XML file and an .EAR file inside.

- **IBSS_WL.ear**
- **Insbridge.net.softmaterconfig.xml**

Place these files in the `C:\Insbridge\config` folder.

NOTE: *It is important that the configuration path specified in the Adding a System Property to WL Server section of this document contain both the application and configuration files. These files need to be placed where you specify in the `startWebLogic.cmd` file.*

Once you have these files in place, do not move them.

STEP 3: ADDING A SYSTEM PROPERTY TO WL SERVER

This is a required step. The system properties must be configured prior to SoftRater being installed.

The Insbridge application requires a shared variable on the WebLogic Server that points to the location of the configuration files.

In WebLogic, it is not possible to define variables as part of the Server JNDI. For this reason, you must create a Java System property in the server initialization that can be used by the application to retrieve the path that accesses the system configuration files.

NOTE: *If the server domain was running during these modifications, you will need to restart the server before proceeding.*

Adding to the WebLogic Server – Windows

1. In a Windows Explorer window, enter the server domain location, i.e. %Domain=Home%.

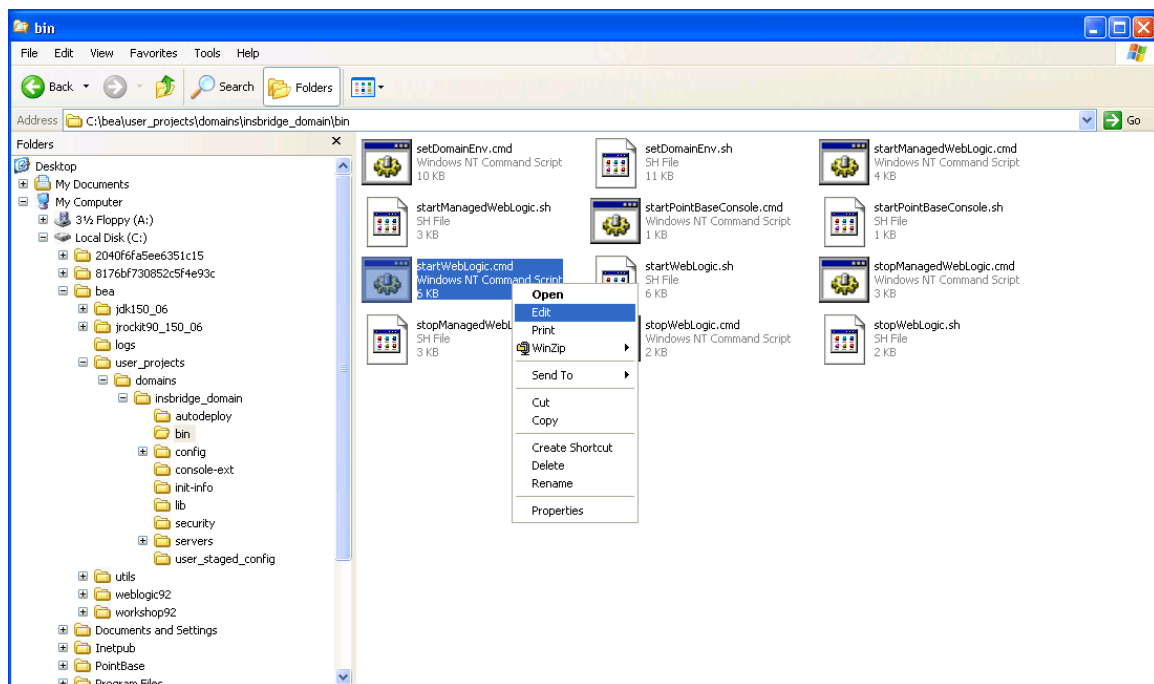


Figure 10 startWebLogic.cmd File

2. In the “bin” folder locate the “startWebLogic.cmd” file. Make a backup of the “startWebLogic.cmd” file.
3. Open the “startWebLogic.cmd” file and right click to **Edit**. Scroll towards the end of the file.

```

if "%WLS_REDIRECT_LOG%"==" " (
%JAVA_HOME%\bin\java %JAVA_VM% %MEM_ARGS% %JAVA_OPTIONS% -Dweblogic.Name=%SERVER_NAME% -
Djava.security.policy=%WL_HOME%\server\lib\weblogic.policy %PROXY_SETTINGS% %SERVER_CLASS%
) else (
%JAVA_HOME%\bin\java %JAVA_VM% %MEM_ARGS% %JAVA_OPTIONS% -Dweblogic.Name=%SERVER_NAME% -
Djava.security.policy=%WL_HOME%\server\lib\weblogic.policy %PROXY_SETTINGS% %SERVER_CLASS%
>"%WLS_REDIRECT_LOG%" 2>&1
)

```

Figure 11 – Editing startWebLogic.cmd File

4. Locate the **DOS if instruction** that looks similar to the one in Figure 11. Your exact file may have slight variations.
5. In both conditions of this instruction you will need to insert the following system property declaration:

- -DINSBRIDGE_APP_DIR="C:\Insbridge\config". If you copy, please verify valid characters have been entered.

In this declaration, add a system property to the Java Virtual Machine using the **"-D"** parameter, then specify **"INSBRIDGE_APP_DIR"** as the name of the new variable.

You must also specify the path where the configuration file will be located. i.e. **"C:\Insbridge\Config"**. Where **C:\Insbridge\config** is the folder you created earlier.

6. **Save** your changes.

```

if "%WLS_REDIRECT_LOG%"==" " (
%JAVA_HOME%\bin\java %JAVA_VM% %MEM_ARGS% %JAVA_OPTIONS% -Dweblogic.Name=%SERVER_NAME% -
Djava.security.policy=%WL_HOME%\server\lib\weblogic.policy -DINSBRIDGE_APP_DIR= "C:\Insbridge\Config"
%PROXY_SETTINGS% %SERVER_CLASS%
) else (
%JAVA_HOME%\bin\java %JAVA_VM% %MEM_ARGS% %JAVA_OPTIONS% -Dweblogic.Name=%SERVER_NAME% -
Djava.security.policy=%WL_HOME%\server\lib\weblogic.policy -DINSBRIDGE_APP_DIR= "C:\Insbridge\Config"
%PROXY_SETTINGS% %SERVER_CLASS% >"%WLS_REDIRECT_LOG%" 2>&1
)

```

Figure 12 – Edited startWebLogic.cmd File

7. The variable will be added to the Server the next time it is started.

Adding to the WebLogic Server – Linux

The procedure is similar in Linux. Locate the **"startWebLogic.sh"** file. In many instances, the file will be located in: `../Oracle/Middleware/user_projects/domains/insbridge/bin`. Open the file and right click to **Edit**. Scroll towards the end of the file and make the necessary changes, for example:

```
-DINSBRIDGE_APP_DIR="/home/INSTALLDIR/Insbridge"
```

STEP 4: STARTING THE WEBLOGIC SERVER

In Windows

To start the WebLogic server:

Start Menu→Oracle WebLogic→User Projects→<Your Server Domain>→Start Admin Server for WebLogic Server Domain.

In Linux

To start the WebLogic server, open up a Terminal and navigate to the WebLogic installation directory, for example:

```
cd /home/INSTALLDIR/Oracle/Middleware/user_projects/domains/xxxx nohup  
./startWeblogic.sh &
```

Where xxxx equals the domain name

NOTE: Please do not close the command prompt window that starts the service. Closing the command prompt window will stop the webserver instance.

Accessing the WebLogic Main Console

The WebLogic Main Console can be accessed once the WebLogic server domain is running by typing <http://<ServerName or IP Address>:<Port>/console> on your browser. i.e. <http://localhost:7001/console>

You will need the administrator username and password for the server domain where you want to install SoftRater.



Figure 13 Logging into WebLogic Server

STEP 5: INSTALLATION OF THE .EAR FILE

The installation of the Insbridge .EAR File begins in the same way as the installation of the WebLogic library.

1. From the Summary of Deployments Page, click the **Install** button. The screen will refresh to the Install Application Assistant page.
2. The list of Locations will be displayed. Click the location you need to reach the .EAR file.
3. Select the **.EAR** file.

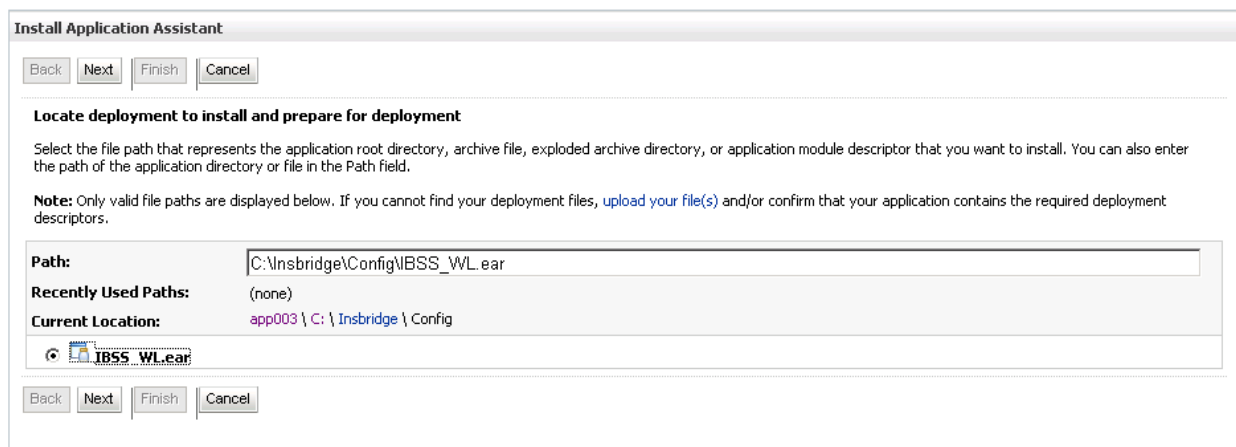


Figure 14 Select the Application .EAR

4. Click **Next**.
5. On the **Install Application Assistant** page, select to **Install this deployment as an application**. Click **Next**.

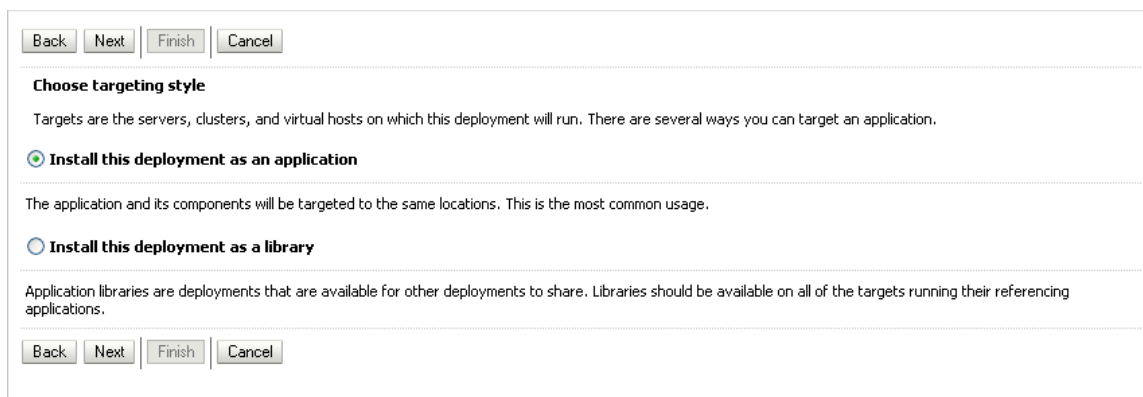


Figure 15 – Verify Application Installation

6. On the **Optional Settings** page, it is recommended that you keep the default values. The deployment name should appear as IBSS_WL.

7. Click **Finish**.
8. After the .EAR File has been added, you will be placed on the Summary of Deployments page. The .EAR File you added will be listed. Read the messages at the top of the screen and correct any error messages.

The screenshot shows the JBoss Summary of Deployments page. At the top, there is a navigation bar with links: Home, Log Out, Preferences, Record, and Help. A search bar is also present. The user is logged in as 'weblogic' and is connected to the 'base_domain'. Below the navigation bar, there is a 'Messages' section with two green checkmarks indicating successful activation and installation. The main section is titled 'Summary of Deployments' and has two tabs: 'Control' and 'Monitoring'. A paragraph explains that this page displays a list of Java EE applications and stand-alone application modules that have been installed to this domain. It also provides instructions on how to start, stop, update, or delete applications. Below this, there is a 'Customize this table' link and a 'Deployments' section. The 'Deployments' section contains a table with columns: Name, State, Health, Type, and Deployment Order. The table lists two deployments: 'IBSS_WL' (Enterprise Application) and 'oracle.jsp.next' (Library). Both are in the 'Active' state with 'OK' health. The table also includes 'Install', 'Update', 'Delete', 'Start', and 'Stop' buttons for each deployment. The page shows 1 to 2 of 2 items.

Home Log Out Preferences Record Help

Welcome, weblogic Connected to: base_domain

Home > Summary of Deployments

Messages

- ✓ All changes have been activated. No restarts are necessary.
- ✓ The deployment has been successfully installed.

Summary of Deployments

Control Monitoring

This page displays a list of Java EE applications and stand-alone application modules that have been installed to this domain. Installed applications and modules can be started, stopped, updated (redeployed), or deleted from the domain by first selecting the application name and using the controls on this page.

To install a new application or module for deployment to targets in this domain, click the Install button.

[Customize this table](#)

Deployments

Install Update Delete Start Stop

Showing 1 to 2 of 2 Previous Next

<input type="checkbox"/>	Name	State	Health	Type	Deployment Order
<input type="checkbox"/>	IBSS_WL	Active	OK	Enterprise Application	100
<input type="checkbox"/>	oracle.jsp.next	Active		Library	100

Install Update Delete Start Stop

Showing 1 to 2 of 2 Previous Next

Figure 16 – Successful Installation

CONTACTING SUPPORT

If you need assistance with an Oracle Insurance Insbridge Rating and Underwriting System product, please log a Service Request using My Oracle Support at <https://support.oracle.com/>.

Address any additional inquiries to:

Oracle Corporation
World Headquarters
500 Oracle Parkway
Redwood Shores, CA 94065
U.S.A.

Worldwide Inquiries:
Phone: +1.650.506.7000
Fax: +1.650.506.7200
oracle.com

TTY ACCESS TO ORACLE SUPPORT SERVICES

Oracle customers have access to electronic support through My Oracle Support. For information, visit <http://www.oracle.com/pls/topic/lookup?ctx=acc&id=info> or visit <http://www.oracle.com/pls/topic/lookup?ctx=acc&id=trs> if you are hearing impaired.

INDEX

A

- Accessing
 - WebLogic Console, 19
- Adding
 - System Property, 17

C

- Command Prompt Window
 - Closing, 19
- Config File
 - Locating, 16

D

- Deployment
 - Optional Settings, 20
- DINSBRIDGE_APP_DIR
 - Adding, 17

E

- Editing

- WebLogic Server, 17
- Edition Notice, 2

I

- IBSS, iv
- Insbridge SoftRater Server, iv

O

- Optional Settings
 - Deployment, 20

R

- Requirements, 16

S

- Starting
 - WebLogic Server, 19
- System
 - Adding Property, 17