

Oracle Utilities Advanced Spatial and Operational Analytics

Quick Install Guide

Release v2.4.0 Service Pack 4

E37467-02

December 2012

Copyright © 2000, 2012, Oracle and/or its affiliates. All rights reserved.

This software and related documentation are provided under a license agreement containing restrictions on use and disclosure and are protected by intellectual property laws. Except as expressly permitted in your license agreement or allowed by law, you may not use, copy, reproduce, translate, broadcast, modify, license, transmit, distribute, exhibit, perform, publish, or display any part, in any form, or by any means. Reverse engineering, disassembly, or decompilation of this software, unless required by law for interoperability, is prohibited.

The information contained herein is subject to change without notice and is not warranted to be error-free. If you find any errors, please report them to us in writing.

If this software or related documentation is delivered to the U.S. Government or anyone licensing it on behalf of the U.S. Government, the following notice is applicable:

U.S. GOVERNMENT RIGHTS

Programs, software, databases, and related documentation and technical data delivered to U.S. Government customers are "commercial computer software" or "commercial technical data" pursuant to the applicable Federal Acquisition Regulation and agency-specific supplemental regulations. As such, the use, duplication, disclosure, modification, and adaptation shall be subject to the restrictions and license terms set forth in the applicable Government contract, and, to the extent applicable by the terms of the Government contract, the additional rights set forth in FAR 52.227-19, Commercial Computer Software License (December 2007). Oracle America, Inc., 500 Oracle Parkway, Redwood City, CA 94065.

This software or hardware is developed for general use in a variety of information management applications. It is not developed or intended for use in any inherently dangerous applications, including applications which may create a risk of personal injury. If you use this software or hardware in dangerous applications, then you shall be responsible to take all appropriate fail-safe, backup, redundancy and other measures to ensure its safe use. Oracle Corporation and its affiliates disclaim any liability for any damages caused by use of this software or hardware in dangerous applications.

Oracle and Java are registered trademarks of Oracle and/or its affiliates. Other names may be trademarks of their respective owners.

Intel and Intel Xeon are trademarks or registered trademarks of Intel Corporation. All SPARC trademarks are used under license and are trademarks or registered trademarks of SPARC International, Inc. AMD, Opteron, the AMD logo, and the AMD Opteron logo are trademarks or registered trademarks of Advanced Micro Devices. UNIX is a registered trademark of The Open Group.

This software or hardware and documentation may provide access to or information on content, products and services from third parties. Oracle Corporation and its affiliates are not responsible for and expressly disclaim all warranties of any kind with respect to third party content, products and services. Oracle Corporation and its affiliates will not be responsible for any loss, costs, or damages incurred due to your access to or use of third party content, products or services.

Contents

Preface	i-i
Audience	i-ii
Related Documents	i-ii
Typographical Conventions	i-ii
Chapter 1	
OUASA v2.4.0 Service Pack 4 Install Instructions	1-1
Changes in Supported Platforms.....	1-1
Changes in Supported Oracle Utilities Products	1-2
Installation Types.....	1-2
Initial Installation or Installing OUASA v2.4.0 Service Pack 4 from scratch.....	1-2
Upgrading OUASA v 2.4.0 or 2.4.0.x to OUASA v2.4.0 Service Pack 4.....	1-2
Demo Installation.....	1-2
Package Contents.....	1-3
Chapter 2	
About OUASA v2.4.0 Base Installation	2-1
Functionality changes added in OUASA Base Product v2.4.0.....	2-1
Architectural Changes.....	2-1
Schema Changes	2-2
Extract-Transform-Load Changes.....	2-2
Installation Changes.....	2-2
Chapter 3	
OUASA v2.4.0 Install Instructions	3-1
Architecture	3-1
Installation Components	3-4
Installation Types.....	3-4
Initial Installation.....	3-4
Upgrade.....	3-4
Demo Installation.....	3-5
Media Pack Contents	3-5
Documentation Packages.....	3-5
Installation Packages.....	3-5
Additional Software Requirements	3-5
Supported Source Application Versions	3-6
Chapter 4	
System Requirements and Planning for OUASA v2.4.0	4-7
Operating Systems and Application Servers.....	4-7
Additional Notes on Supported Platforms.....	4-7
Oracle's Unbreakable Enterprise Kernel.....	4-8
Oracle Database Server	4-8
Oracle VM Support.....	4-8
Oracle Support Policy on VMWare	4-8
Chapter 5	
Installing OUASA v2.4.0 Service Pack 4	5-1
Installation Types.....	5-1

Initial Installation or Installing OUASA v2.4.0 Service Pack 4 from scratch	5-1
Upgrading OUASA v2.4.0 or v2.4.0.x to OUASA v2.4.0 Service Pack 4	5-2
OUASA v2.4.0 Service Pack 4 Upgrade Installation	5-2
Chapter 6	
Installing OUASA Base Product v2.4.0	6-1
OUASA Database Component Installation	6-1
OUASA ETL Component Installation	6-1
OUASA Dashboard Component Installation	6-1
Chapter 7	
Upgrading OUASA Base Installation v2.4.0	7-1
OUASA Database Component Installation	7-1
OUASA ETL Component Installation	7-1
OUASA Dashboard Component Installation	7-2
Chapter 8	
Installing Demo Database	8-1
OUASA Demo Database Component Installation	8-1
OUASA Dashboard Component Installation	8-1
Chapter 9	
Additional Information for Installing Optional Oracle Software	9-3
Oracle Warehouse Builder 11.2.0.2	9-3
Oracle Business Intelligence Enterprise Edition 11.1.1.5	9-3
Appendix A	
Additional Resources	A-1
Contacting Oracle Support	A-1
Supported Knowledge Articles	A-1

Preface

This guide provides an overview for installing Oracle Utilities Advanced Spatial and Operational Analytics version 2.4.0 Service Pack 4 and OUASA Base Product version 2.4.0 based on your installation setup.

The preface contains these topics:

- **Audience**
- **Related Documents**
- **Typographical Conventions**

Audience

This guide is intended for developers, system administrators, and implementers who want to install Oracle Utilities Advanced Spatial and Operational Analytics 2.4.0 Service Pack 4. This guide assumes the reader is comfortable performing common system administration operations and has some familiarity with installing Oracle Warehouse Builder (OWB) and Oracle Business Intelligence Enterprise Edition (OBIEE).

Related Documents

For more information, see the following documents:

- *Oracle Utilities Advanced Spatial and Operational Analytics Installation Guide*
- *Oracle Utilities Advanced Spatial and Operational Analytics User's Guide*
- *Oracle Utilities Advanced Spatial and Operational Analytics Administration Guide*
- *Oracle Utilities Advanced Spatial and Operational Analytics Release Notes*

Oracle Utilities Business Intelligence Documentation Library has the following:

- *Oracle Utilities Business Intelligence Installation Guide*
- *Oracle Utilities Business Intelligence DBA Guide*
- *Oracle Utilities Business Intelligence User's Guide*

See Also:

- *Oracle Utilities Business Intelligence V2.4.0.4 Server Administration Guide*
- *Oracle Utilities Application Framework V4.1 Business Process Guide*
- *Oracle Utilities Application Framework V4.1 Administration Guide*

Typographical Conventions

The following text conventions are used in this document:

Convention	Meaning
boldface	Boldface type indicates graphical user interface elements associated with an action or terms defined in text or the glossary.
<i>italic</i>	Italic type indicates book titles, emphasis, or placeholder variables for which you supply particular values.
monospace	Monospace type indicates commands within a paragraph, URLs, code in examples, text that appears on the screen, or text that you enter.

Chapter 2

About OUASA v2.4.0 Base Installation

Oracle Utilities Advanced Spatial and Operational Analytics (OUASA) Base Product v2.4.0, in other words, Oracle Business Intelligence for Utilities, version 2.4.0 consists of the following components:

- Star schema definitions
- OUASA ETL process built on Oracle Warehouse Builder (OWB)
- Pre-built analytics OUASA dashboards based on Oracle Business Intelligence Enterprise Edition (OBIEE)
- OUBI - Oracle Utilities Business Intelligence (OUBI) includes Oracle Utilities Application Framework (OUAF)-based application to generate process flows using OWB Code Generator. This is an optional component and is required only if you need to customize or create new custom OWB process flows.

Note that the term OUASA typically refers to the first three components mentioned above. Only these three components are required for a typical installation. This document describes these components required by most of the customers. For a detailed description regarding Oracle Utilities Business Intelligence (OUBI), refer to the *Oracle Business Intelligence Installation Guide*.

Functionality Changes Added in OUASA Base Product v2.4.0

New functionality in Oracle Utilities Advanced Spatial and Operational Analytics v2.4.0 includes architectural changes, data warehouse schema updates, Extract-Transform-Load (ETL) changes, and installation modifications.

Architectural Changes

The architectural changes are as follows:

- OUASA Dashboards and answers have been upgraded to OBIEE 11g, with new 11g features and look and feel.
- A new administration group has been added to the dashboards allowing users to administer and configure OBIEE. The features supported in the administration section include:
 - New write back reports introduced to manage the labels in reports within OBIEE itself.
 - New dashboards allowing users to view and manage load jobs. Jobs can be resubmitted using this dashboard. Refer to the "Running and Monitoring Extract Loads" section in the *Oracle Utilities Advanced Spatial and Operational Analytics Administration Guide* for more details.

-
- A new mechanism has been put in place to automatically refresh the OBIEE cache data, as soon as new data arrives into the warehouse. Refer to the "Auto Cache Refresh" section in the *Oracle Utilities Advanced Spatial and Operational Analytics Administration Guide* for more details.

Schema Changes

The schema changes are as follows:

- A new group of dashboards grouped under Oracle Utilities Meter Data Analytics has been added. This group provides reporting metrics on the Oracle Utilities Meter Data Management (MDM) application. This change includes a set of eight dashboards and the underlying star schema to support these analytics. Refer to the "Oracle Utilities Meter Data Management Extractor Details" section in the *Oracle Utilities Advanced Spatial and Operational Analytics Administration Guide* for more details on the extract methodology.
- A new group of dashboards grouped under Oracle Utilities Mobile Workforce Analytics has been added. This group provides reporting metrics on the Oracle Utilities Mobile Workforce Management (MWM) application. This change includes a set of six dashboards and the underlying star schema to support these analytics. Refer to the "Oracle Utilities Mobile Workforce Management Extractor Details" section in the *Oracle Utilities Advanced Spatial and Operational Analytics Administration Guide* for more details on the extract methodology.
- The new dashboards now support drill back to the source edge applications (Oracle Utilities Meter Data Management or Oracle Utilities Mobile Workforce Management) directly from the reports. Refer to the "OUASA: Configuring Drill Back" section in the *Oracle Utilities Advanced Spatial and Operational Analytics Administration Guide* to understand how to configure this.

Extract-Transform-Load Changes

Following are the modifications done to the Extract-Transform-Load component:

- All load jobs will now be scheduled automatically by the file processor. Users would just need to extract files and then copy them into the load directory; the system takes care of the remaining tasks. Refer to the "About the File Processor Daemon" section in the *Oracle Utilities Advanced Spatial and Operational Analytics Administration Guide* for more details.
- New validation step has been introduced in the load jobs, to validate the number of records actually loaded against the number records in the flat file being loaded. Refer to the "Oracle Warehouse Builder Transformations" in the *Oracle Utilities Advanced Spatial and Operational Analytics Administration Guide* for more details.
- All workflows will be enabled for parallel processing; however the degree of parallelism is set to 1. Customers will need to change the degree based on their data volumes processing capabilities. Refer to the "Parallelism and Partitioning" section in the *Oracle Utilities Advanced Spatial and Operational Analytics Administration Guide* for more details.
- Additional workflows have been provided for purging the Oracle Workflow runtime audit tables. These have to be scheduled by the customer. Refer to the "Purging Audit Records" section in the *Oracle Utilities Advanced Spatial and Operational Analytics Administration Guide* for more details.

Installation Changes

The modifications during the installation process are listed as follows:

- Deployment and configuration of OWB objects have been automated.
- Install scripts will retain customizations for parallel settings during upgrades.

Refer to the *Oracle Utilities Advanced Spatial and Operational Analytics Installation Guide* for further details.

Chapter 3

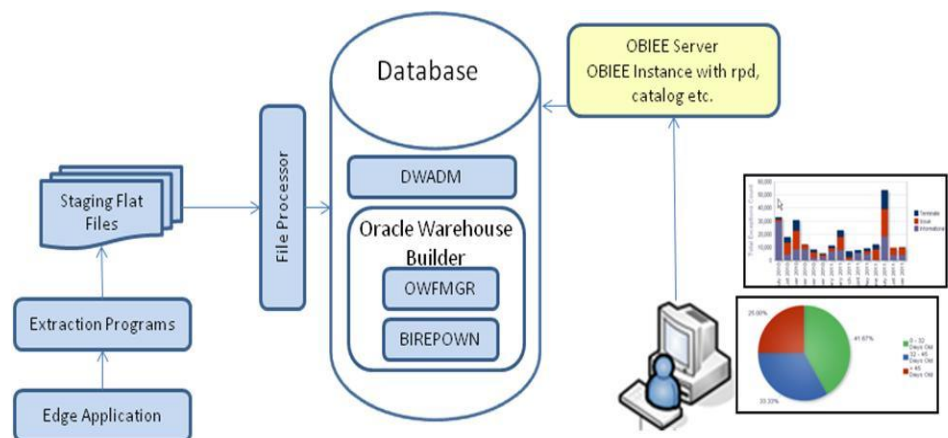
OUASA v2.4.0 Install Instructions

Oracle Utilities Advanced Spatial and Operational Analytics (OUASA) v.2.4.0 base installation consist of several components each of which should be installed for a successful installation. Refer to **Installation Components** on page 3-4 for the list of components comprising the Oracle Utilities Advanced Spatial and Operational Analytics product.

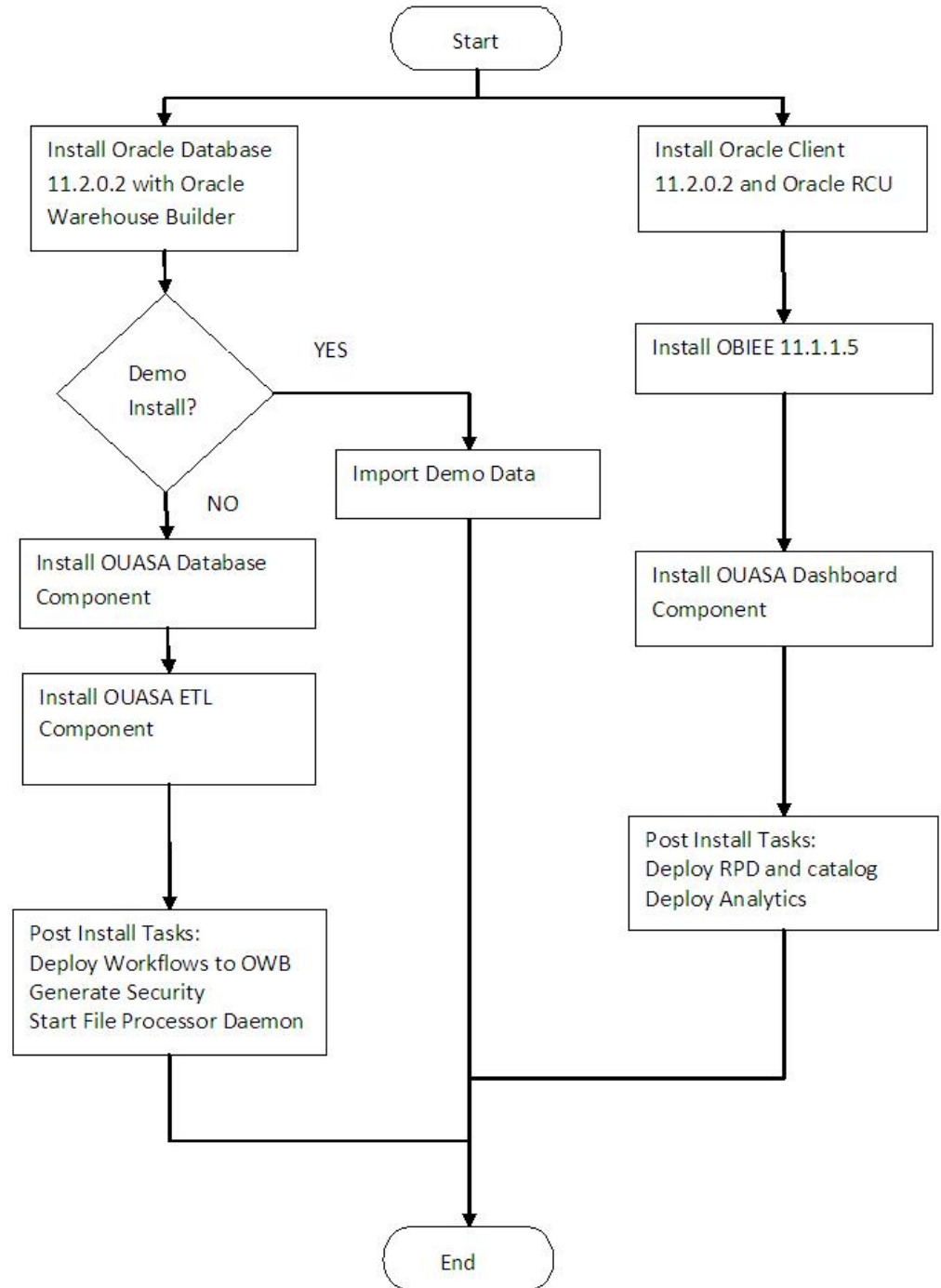
Certain prerequisite software may be required to be installed for installing each of these components. Refer to **Operating Systems and Application Servers** on page 4-7 for details on required software for this installation.

Architecture

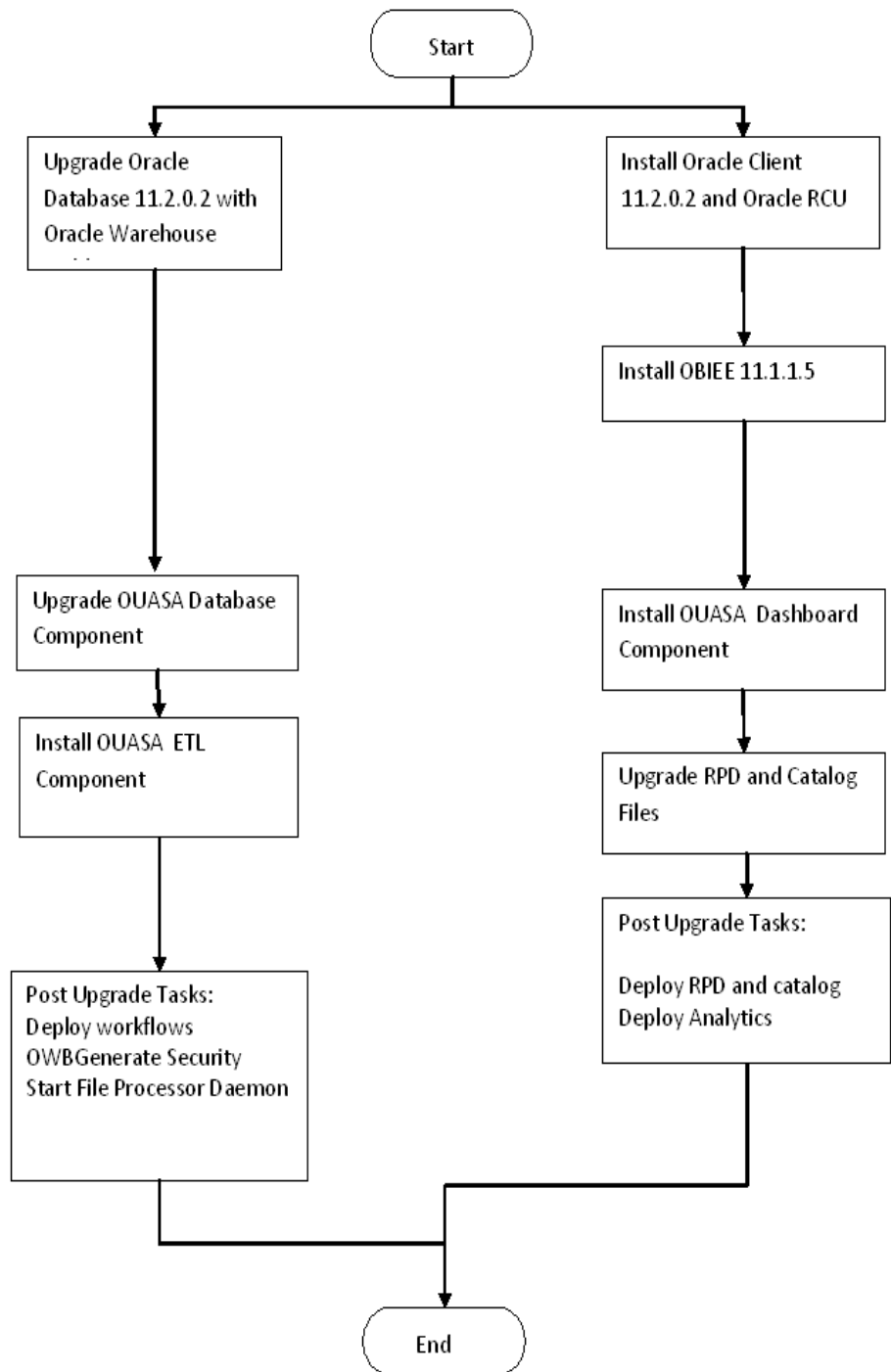
The following figure displays the architecture layout of the Oracle Utilities Advanced Spatial and Operational Analytics (OUASA) product.



The following figure shows the workflow for the initial installation process:



The following figure shows the workflow for the upgrade process.



Installation Components

The Oracle Utilities Advanced Spatial and Operational Analytics (OUASA) v2.4.0 product installation consists of the following installable components. Each of the components listed below must be installed to complete the Oracle Utilities Advanced Spatial and Operational Analytics installation:

- **OUASA Database component** containing star schemas and product metadata
- **OUASA ETL workflows** based on Oracle Warehouse Builder (OWB)
Note that the OUASA ETL component should be installed on database server
- **OUASA Dashboards and answers** based on Oracle Business Intelligence Enterprise Edition (OBIEE)
Note that the OUASA Dashboard components should be installed where OBIEE 11.1.1.5 is installed on the server

Oracle Utilities Advanced Spatial and Operational Analytics also includes a demo database with pre-populated data that can be used for training or demonstration purposes.

Installation Types

The first step in the installation procedure is to determine the installation type based on the customer installation scenario. The following are the possible installation types:

- **Initial Installation**
An initial installation from scratch
- **Upgrade**
An upgrade from an earlier version to version 2.4.0
- **Demo Installation**
An installation with pre-populated demo data

Initial Installation

This installation type is applicable when installing Oracle Utilities Advanced Spatial and Operational Analytics for the first time or from scratch. Each of the following components should be installed during an initial installation. These components have been described in Chapter 5 of this guide:

- **OUASA Database Component Installation**
- **OUASA ETL Component Installation**
- **OUASA Dashboard Component Installation**

Upgrade

This installation type is applicable when upgrading to Oracle Utilities Advanced Spatial and Operational Analytics (OUASA) v2.4.0 from an earlier version.

Each of the following components should be installed during an upgrade installation.

- **OUASA Database Component Installation**
- **OUASA ETL Component Installation**
- **OUASA Dashboard Component Installation**

Demo Installation

This installation type is applicable when installing the demo database component of Oracle Utilities Advanced Spatial and Operational Analytics for demonstration or training purposes. The following components should be installed for a demo installation:

- **OUASA Demo Database Component Installation**
- **OUASA Dashboard Component Installation**

Media Pack Contents

Oracle Utilities Advanced Spatial and Operational Analytics v2.4.0 Media Pack consists of the following documentation and installation packages. Following topics are included in this section:

- **Documentation Packages**
- **Installation Packages**

Documentation Packages

Documentation Packages include the following:

- Oracle Utilities Advanced Spatial and Operational Analytics v2.4.0 Release Notes
- Oracle Utilities Advanced Spatial and Operational Analytics v2.4.0 Quick Install Guide
- Oracle Utilities Advanced Spatial and Operational Analytics v2.4.0 Installation and Configuration Documentation
- Oracle Utilities Advanced Spatial and Operational Analytics v2.4.0 User Documentation
- Oracle Utilities Advanced Spatial and Operational Analytics v2.4.0 Supplemental Documentation

Installation Packages

Installation Packages include the following:

- Oracle Utilities Advanced Spatial and Operational Analytics v2.4.0 Multiplatform
- Oracle Utilities Advanced Spatial and Operational Analytics v2.4.0 Oracle Database

Note: The Oracle Utilities Advanced Spatial and Operational Analytics v2.4.0 Multiplatform package contains the installer for both the ETL component and Dashboard component.

Additional Software Requirements

The following additional software products are required to run Oracle Utilities Advanced Spatial and Operational Analytics, but are not included in the Media Pack:

- Oracle Business Intelligence Enterprise Edition 11.1.1.5.0
- Oracle Database Server Enterprise Edition 11.2.0.2 with Oracle Warehouse Builder
- Oracle Client 11.2.0.2 Software 32 bit Windows
- Java 1.6 or higher
- Oracle Warehouse Builder Client 32bit Windows

Supported Source Application Versions

The following are the supported source application versions

Source Application	Version
Oracle Utilities Customer Care & Billing	2.2.0 2.3.1
Oracle Utilities Network Management System	1.9.0.3 1.10.0.3.1 1.11.0.1
Oracle Utilities Work & Asset Management	1.8.1 1.9.0.4
Oracle Utilities Meter Data Management	Oracle Utilities Meter Data Management version 2.0.1, service pack 8 (2.0.1.8) + single fix patch # 14741869 + single fix patch # 15983267 + framework patch 14741833
Oracle Utilities Mobile Workforce Management	Oracle Utilities Mobile Workforce Management version 2.1.0, service pack 4 (2.1.0.4) +single fix patch 14791886 + framework patch 14741833

Chapter 4

System Requirements and Planning for OUASA v2.4.0

Following system requirements and supported platforms are discussed in these topics:

- **Operating Systems and Application Servers**
- **Additional Notes on Supported Platforms**

Operating Systems and Application Servers

The Oracle Utilities Advanced Spatial and Operational Analytics (OUASA) v2.4.0 base installation is certified to operate on varied operating system, application server, and database server combinations. For the software requirements for each of these combinations, refer to the *Oracle Utilities Advanced Spatial and Operational Analytics Installation Guide*.

The following table details the browser, operating system, and application server combinations on which Oracle Utilities Advanced Spatial and Operational Analytics (OUASA) v2.4.0 has been tested and certified.

OBIEE	Browser	Operating System (Client)	Operating System (Server)	Chipset	Application Server	Database
OBIEE 11.1.1.5	IE 7.x	Windows XP SP3	AIX 6.1 (64-bit)	Power 64-bit	WebLogic 10.3.5	Oracle 11.2.0.2
	IE 8.x		Oracle Linux 5.6 (64-bit) Red Hat Enterprise Linux 5.6 (64-bit)	x86_64	WebLogic 10.3.5	Oracle 11.2.0.2
	Firefox 3.x (OBIEE only)	Windows 7	Sun Solaris 10 (64-bit)	SPARC	WebLogic 10.3.5	Oracle 11.2.0.2
			Windows 2008 Server SP2 (32-bit)	x86_64	WebLogic 10.3.5	Oracle 11.2.0.2

Additional Notes on Supported Platforms

Following topics are discussed here in this section:

-
- **Oracle's Unbreakable Enterprise Kernel**
 - **Oracle Database Server**
 - **Oracle VM Support**
 - **Oracle Support Policy on VMWare**

Oracle's Unbreakable Enterprise Kernel

Oracle Utilities Advanced Spatial and Operational Analytics v2.4.0 is supported on Oracle's Unbreakable Enterprise Kernel.

Oracle Database Server

Oracle Utilities Advanced Spatial and Operational Analytics v2.4.0 is supported on Oracle Database Enterprise Edition Server 11.2.0.2 on any of the operating systems listed above.

Oracle VM Support

Oracle Utilities Advanced Spatial and Operational Analytics v2.4.0 is supported on Oracle VM 2.2.1 for supported releases of Oracle Linux and Microsoft Windows operating systems.

Oracle Support Policy on VMWare

Refer to My Oracle Support knowledge base article 249212.1 for Oracle's support policy on VMWare.

Chapter 6

Installing OUASA Base Product v2.4.0

This chapter provides an overview of installing Oracle Utilities Advanced Spatial and Operational Analytics (OUASA) base product version 2.4.0.

For details, refer to the *Oracle Utilities Advanced Spatial and Operational Analytics Installation Guide*.

The following sections in this chapter provide an overview of the required installation steps for an initial installation installing each of these components:

- **OUASA Database Component Installation**
- **OUASA ETL Component Installation**
- **OUASA Dashboard Component Installation**

OUASA Database Component Installation

For a fresh or initial installation create a 11.2.0.2 database with specific users and parameters. Refer to the “Database Installation” section in *Oracle Utilities Advanced Spatial and Operational Analytics Installation Guide* for detailed steps on database component installation.

OUASA ETL Component Installation

This is the next step in the installation procedure after installing the database component. It is assumed that Oracle Warehouse Builder is already installed and available before proceeding with this installation step.

Before installing the ETL component, Oracle Warehouse Builder needs to be configured. Refer to the “Configuring and Deploying Oracle Warehouse Builder” section in *Oracle Utilities Advanced Spatial and Operational Analytics Installation Guide* for detailed steps on configuring Oracle Warehouse Builder.

Refer to the “ETL Workflow Installation” section in *Oracle Utilities Advanced Spatial and Operational Analytics Installation Guide* for detailed steps on installing and deploying the workflow objects on Oracle Warehouse Builder.

OUASA Dashboard Component Installation

This is the next step in the installation procedure after installing the database component and ETL component. It is assumed that Oracle Business Intelligence Enterprise Edition is installed and available before proceeding with this installation step.

Refer to the “Prerequisite Software” section in *Oracle Utilities Advanced Spatial and Operational Analytics Installation Guide* for the list of prerequisite software necessary for installing the dashboard component.

Refer to the “Dashboard Installation” section in *Oracle Utilities Advanced Spatial and Operational Analytics Installation Guide* for details on the steps to be performed in order to install and deploy the dashboard component on OBIEE.

Chapter 7

Upgrading OUASA Base Installation v2.4.0

This chapter provides an overview of upgrading Oracle Utilities Advanced Spatial and Operational Analytics v2.4.0 from an earlier version. For additional installation information, refer to the *Oracle Utilities Advanced Spatial and Operational Analytics Installation Guide*.

Refer to the “Supported Upgrade Paths” section in *Oracle Utilities Advanced Spatial and Operational Analytics Installation Guide* to find out whether the upgrade of your particular product version is supported.

Each of the following components is required to be upgraded for upgrading to Oracle Utilities Advanced Spatial and Operational Analytics Base Installation version 2.4.0.

- **OUASA Database Component Installation**
- **OUASA ETL Component Installation**
- **OUASA Dashboard Component Installation**

OUASA Database Component Installation

During an upgrade, the existing database schema needs to be upgraded to Oracle Utilities Advanced Spatial and Operational Analytics (OUASA) version 2.4.0.

Refer to the “OUASA Database Component Installation” section in Chapter 5 of *Oracle Utilities Advanced Spatial and Operational Analytics Installation Guide* for detailed steps on upgrading the existing database schema to v2.4.0.

OUASA ETL Component Installation

This is the next step in the upgrade procedure after upgrading the database component. For this the existing Oracle Warehouse Builder repository should be upgraded to v2.4.0.

Before upgrading the OUASA ETL component, Oracle Warehouse Builder should be upgraded and configured. Refer to the “Configuring and Deploying Oracle Warehouse Builder” section in *Oracle Utilities Advanced Spatial and Operational Analytics Installation Guide* for detailed steps on configuring Oracle Warehouse Builder.

The next step is upgrading the OUASA ETL component on Oracle Warehouse Builder. Refer to the “ETL Workflow Installation” in *Oracle Utilities Advanced Spatial and Operational Analytics Installation Guide* for detailed steps on upgrading and deploying the workflow objects on Oracle Warehouse Builder.

OUASA Dashboard Component Installation

This is the next step in the installation procedure after upgrading the OUASA database component and OUASA ETL component.

The following two steps are involved in the upgrade process:

- Upgrade the Oracle Business Intelligence Enterprise Edition software from the existing version to 11.1.1.5.
- Upgrade the custom dashboards and answers to 11.1.1.5.

Refer to the *Oracle Business Intelligence Enterprise Edition* documentation for steps on upgrading the Oracle Business Intelligence Enterprise Edition software from the existing version to 11.1.1.5.

Refer to the “Prerequisite Software” section in *Oracle Utilities Advanced Spatial and Operational Analytics Installation Guide* for the list of pre-requisite software necessary for upgrading the dashboard component.

Refer to the “OUASA Dashboard Component Installation” section in *Oracle Utilities Advanced Spatial and Operational Analytics Installation Guide* for steps to be performed to upgrade and deploy the OUASA dashboard component on Oracle Business Intelligence Enterprise Edition.

Chapter 8

Installing Demo Database

This chapter provides an overview of the steps involved in installing a demo database.

- **OUASA Demo Database Component Installation**
- **OUASA Dashboard Component Installation**

OUASA Demo Database Component Installation

A fresh Oracle Database 11.2.0.2 should be created, followed by a demo dump import. Refer to the “Demo Installation Procedure” Chapter in *Oracle Utilities Advanced Spatial and Operational Analytics Installation Guide* that specifies database creation and demo dump import steps.

Note: During demo database import, there may be some warnings related to external table creation if OUASA ETL component setup is not done. These can be ignored since OUASA ETL component setup is not a required step for OUASA demo database component installation.

OUASA Dashboard Component Installation

After installing the OUASA demo database component, install the OUASA dashboard component. It is assumed that Oracle Business Intelligence Enterprise Edition is installed and available before proceeding with this installation step.

Refer to the “Prerequisite Software” section in *Oracle Utilities Advanced Spatial and Operational Analytics Installation Guide* for the list of pre-requisite software necessary for installing the OUASA dashboard component.

The installation steps for the dashboard component are same as that for an initial install. Refer to the “OUASA Dashboard Component Installation” section in *Oracle Utilities Advanced Spatial and Operational Analytics Installation Guide* for the steps to install and deploy the OUASA dashboard component on Oracle Business Intelligence Enterprise Edition.

Chapter 9

Additional Information for Installing Optional Oracle Software

This chapter describes the optional software that can be installed with Oracle Utilities Advanced Spatial and Operational Analytics.

- **Oracle Warehouse Builder 11.2.0.2**
- **Oracle Business Intelligence Enterprise Edition 11.1.1.5**

Oracle Warehouse Builder 11.2.0.2

Oracle Warehouse Builder 11.2.0.2 is available with Oracle Database 11.2.0.2, and hence, does not require to be installed separately.

Oracle Business Intelligence Enterprise Edition 11.1.1.5

OUASA v2.4.0 is supported with Oracle Business Intelligence Suite Enterprise Edition Version 11.1.1.5.

Refer to the Oracle Business Intelligence Suite Enterprise Edition Documentation Library for installation instructions.

Appendix A

Additional Resources

Contacting Oracle Support

To contact Oracle support, visit the Oracle Support Web site at:

<http://www.oracle.com/support/index.html>

Supported Knowledge Articles

You can also search for product documentation, release notes, and white paper by using the OUBI/OUASA Service Packs Doc ID 1421341.1 number.