

Oracle® Enterprise Manager

Application Management Pack for Oracle Enterprise Taxation and Policy Management

Installation Guide

E28043-02

May 2012

Application Management Pack for Oracle Enterprise Taxation and Policy Management extends Oracle Enterprise Manager Cloud Control to allow monitoring and management of Oracle Utilities Application Framework-based products on remote servers.

When Application Management Pack for Oracle Enterprise Taxation and Policy Management is deployed, the following features and capabilities are available:

- Product discovery
- Environment assessment
- Environment cloning
- Patch identification and installation
- Patch migration from one environment to another
- View product configuration files

This document describes the requirements and tasks related to deploying, configuring, and undeploying Application Management Pack for Oracle Enterprise Taxation and Policy Management.

Related Documentation and Resources

The **Help** menu provides links to **Enterprise Manager Help**, **Oracle Online Documentation**, **Oracle Online Forums**, and the **Oracle Technology Network (OTN)**, where the complete documentation for Oracle Enterprise Manager 12c is available.

This document and other Application Management Pack for Oracle Enterprise Taxation and Policy Management-specific documentation is available in the **Oracle Tax Applications** section of the Oracle Software Delivery Cloud at <https://edelivery.oracle.com>.

Additional information on Oracle Enterprise Manager-specific features and functionality relating to this product is available in the *Enterprise Manager Cloud Control Documentation* (http://docs.oracle.com/cd/E24628_01/index.htm).

Note: The documentation that accompanies this product is subject to revision and updating. Additional information that may relate to the functionality and features in this product may be found in article number **1456129.1** on *My Oracle Support (MOS)* <https://support.oracle.com> (sign-in required).

Supported Product Versions

This Application Management Pack supports the following Oracle products:

Table 1: Product Support

Product	Version
Oracle Enterprise Manager	12c
Oracle Utilities Application Framework	2.2.0 and 4.1.0

Requirements

The following are the operating system and software requirements for the Application Management Pack for Oracle Enterprise Taxation and Policy Management plug-in.

Important: Ensure that the latest service packs are installed for all OUA 2.2.0- or 4.1.0-based products before installing Application Management Pack for Oracle Enterprise Taxation and Policy Management.

Oracle Enterprise Manager Requirements

Supported Operating Systems/OS Server Architecture

- Sun Solaris 10/SPARC 64-bit
- IBM AIX 6.1/POWER 64-bit
- Oracle Enterprise Linux 5.5/x86 64-bit

Database Server and Web Application Servers (Supported Combinations)

Oracle WebLogic Server 10.3.5 and OEM supported databases

- DB-10gR2 10.2.0.4, 10.2.0.5
- DB-11gR1 11.1.0.7
- DB-11gR2 11.2.0.1, 11.2.0.2 (Note 1266977.1)11.2.0.1, 11.2.0.2

Supported Browsers

- Internet Explorer 8.x
- Firefox 4.x

Oracle Utilities Application Framework 2.2.0 and 4.1.0 Requirements

The plug-in is designed to manage and monitor Oracle Utilities Application Framework-based product installations of Oracle Enterprise Tax and Policy Management, releases

2.2.1 or 2.3.1, on any of the operating systems and server architectures listed in the OEM requirements table shown above.

See the *Oracle Enterprise Tax and Policy Management Installation Guide* for that product's platform requirements.

Downloading and Importing Application Management Pack for Oracle Enterprise Taxation and Policy Management

Checking for Application Management Pack Availability

Enterprise manager makes functional updates available by publishing them to the Enterprise Manager Store, an external site that is periodically checked by Cloud Control to obtain information about available updates. Through this facility, Application Management Pack for Oracle Enterprise Taxation and Policy Management may be available for immediate deployment on Enterprise Manager.

To check for the availability of Application Management Pack for Oracle Enterprise Taxation and Policy Management, choose **Setup > Extensibility > Plug-ins**:

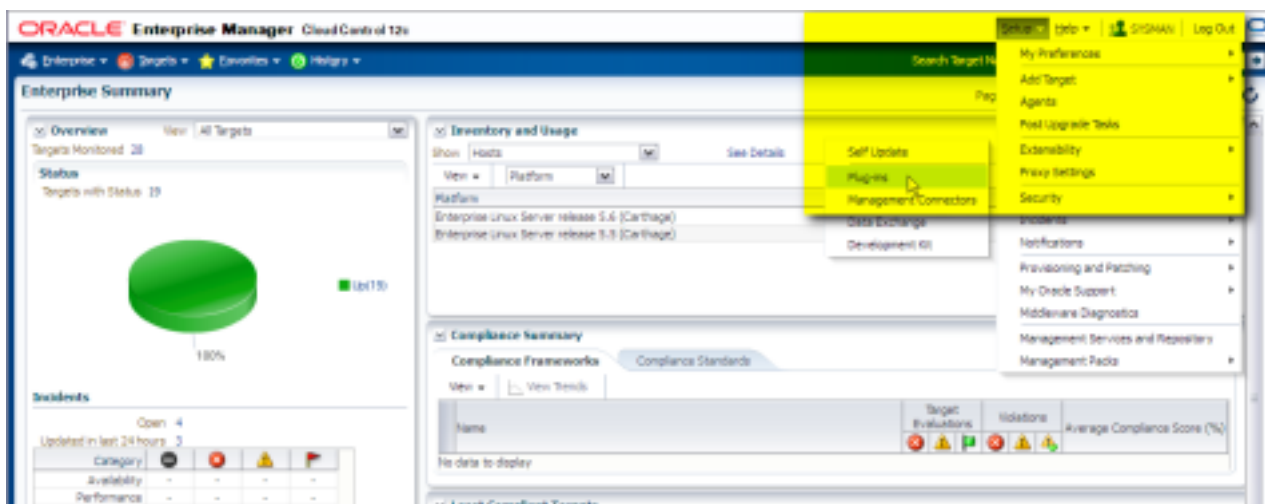


Figure 1: Viewing the Plug-ins Page

On the **Plug-ins** page, check for **Application Management Pack for Oracle Enterprise Taxation and Policy Management** on the **Applications** list:

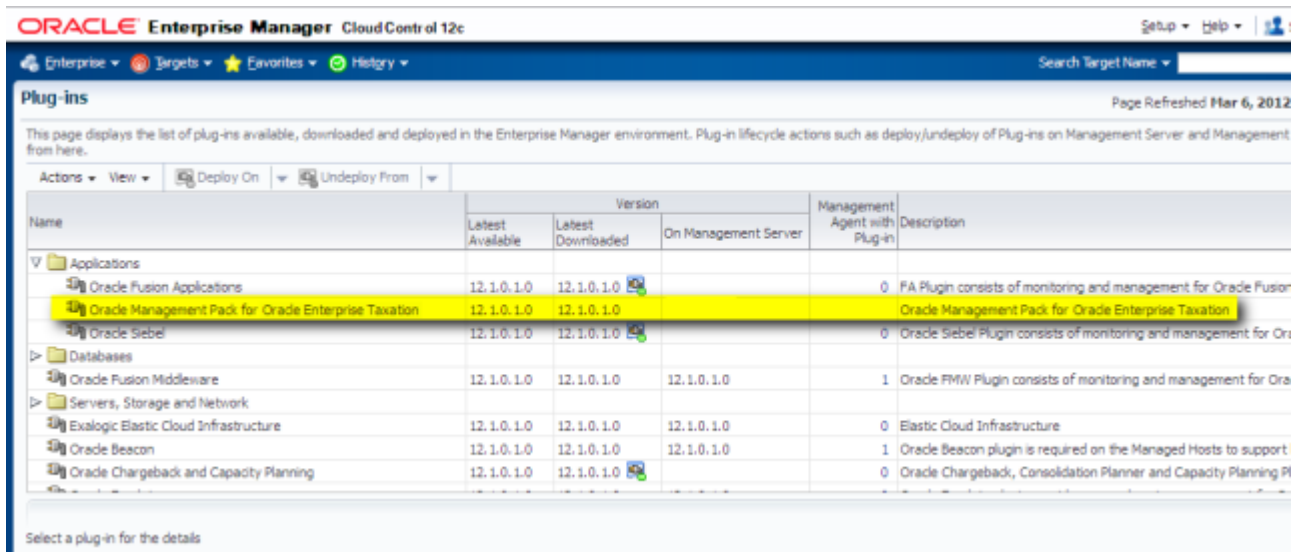


Figure 2: Plug-ins Page

If present, Application Management Pack for Oracle Enterprise Taxation and Policy Management is already available for deployment, allowing you to bypass the installation procedures described in this section and immediately proceed to the deployment task described in [Deploying Application Management Pack for Oracle Enterprise Taxation and Policy Management on OMS](#)

After deploying Application Management Pack for Oracle Enterprise Taxation and Policy Management, target environment instances must be added for central monitoring and management.

Installation Procedures if the Management Pack is Not Present

If Application Management Pack for Oracle Enterprise Taxation and Policy Management is not available for immediate deployment, it must be downloaded and imported as follows:

1. Download the Application Management Pack for Oracle Enterprise Taxation and Policy Management installation file and extract the `opar` files contained within it.
2. Set up the software library required for import and deployment.
3. Set up the Enterprise Manager Command Line (EMCLI) utility.
4. Use EMCLI to import Application Management Pack for Oracle Enterprise Taxation and Policy Management into Enterprise Manager Cloud Control.

This section describes each of these procedures.

After downloading and importing Application Management Pack for Oracle Enterprise Taxation and Policy Management, the Application Management Pack must be deployed on Management Servers and Management Agents.

After deploying Application Management Pack for Oracle Enterprise Taxation and Policy Management, target environment instances must be added for central monitoring and management.

Positioning the Installation File

Note: This procedure is not required if Application Management Pack for Oracle Enterprise Taxation and Policy Management is available for immediate deployment as described earlier in the topic, *Downloading and Importing Application Management Pack for Oracle Enterprise Taxation and Policy Management*.

Note: To complete the final step in this procedure, Java JDK must be installed on the machine on which the Application Management Pack for Oracle Enterprise Taxation and Policy Management will be downloaded. Java packages may be downloaded from <http://www.oracle.com/technetwork/java/archive-139210.html>

The Application Management Pack for Oracle Enterprise Taxation and Policy Management installation file (AMP-V12.1.0.1.0-MultiPlatform.jar) is available on the Oracle Software Delivery Cloud site. The jar can be installed using the Enterprise Manager Command Line (EMCLI) utility on either Linux/UNIX or Windows platforms.

To download and position Application Management Pack for Oracle Enterprise Taxation and Policy Management for installation:

1. Log in to the Oracle Software Delivery Cloud at <https://edelivery.oracle.com>, and click the boxes on the **Terms and Restrictions** page to access the **Media Pack Search** page.
2. Select **Oracle Tax Applications** from the product dropdown list, a platform from the **Platform** list, and click **Go** to list downloadable media packs.
3. Locate and click the Application Management Pack for Oracle Enterprise Taxation and Policy Management item to advance to the **Download** page.
4. Click the **Download** button and save the file to a temporary location (e.g., `c:/mediapacks`).
5. Extract the `opar` files from the downloaded file (example download location shown below):

```
cd c:/tempdir
jar -xvf AMP-V12.1.0.1.0-MultiPlatform.jar
```

Setting Up the Software Library

Note: This procedure is not required if Application Management Pack for Oracle Enterprise Taxation and Policy Management is available for immediate deployment as described earlier in the topic, *Downloading and Importing Application Management Pack for Oracle Enterprise Taxation and Policy Management*.

To set up the software library:

1. Create a folder on the system on which Enterprise Manager is installed (e.g., `/net/hostname/scratch/aime/swlib1`).
2. From the console, select **Enterprise**, then **Provisioning and Patching**, then **Software Library**.
3. Click **Actions**, then **Administration**.

4. Click **Add**.
5. In the pop up window, enter the name of the folder you created in Step 1 (e.g., `/net/hostname/scratch/aime/swlib1`).
6. Wait for the software library setup process to complete.

Setting Up the EMCLI Utility

Note: This procedure is not required if Application Management Pack for Oracle Enterprise Taxation and Policy Management is available for immediate deployment as described earlier in the topic, *Downloading and Importing Application Management Pack for Oracle Enterprise Taxation and Policy Management*.

The Enterprise Manager Command Line (EMCLI) utility is required to import the plug-in archive for deployment to Enterprise Manager.

- The Cloud Control console provides a page containing instructions on setting up EMCLI. Access the page at the following URL:

```
https://em_host:em_port/em/console/emcli/download
```

For example:

```
https://emserver.acme.com:7799/em/console/emcli/download
```

- After setting up EMCLI, synchronize the EMCLI client with an Oracle Management Service (OMS):

```
emcli sync
```

After synchronization, all verbs and associated command line Help available to this OMS become available at the EMCLI client.

```
https://emserver.acme.com:7799/em/console/emcli/download
```

Importing Application Management Pack for Oracle Enterprise Taxation and Policy Management

Note: This procedure is not required if Application Management Pack for Oracle Enterprise Taxation and Policy Management is available for immediate deployment as described earlier in the topic, *Downloading and Importing Application Management Pack for Oracle Enterprise Taxation and Policy Management*.

The Application Management Pack must be imported into Enterprise Manager Cloud Control using the `emcli import_update` command. Two options are available, depending on the system on which you are running the EMCLI utility:

- If the EMCLI utility is on the same system as the `.opar` file, run the following command:

```
emcli import_update
-file="<fully-qualified path to the .opar file>"
-omslocal
```

The `-omslocal` flag indicates that the Application Management Pack archive is on the same system on which the command is run, and the path exists on this system.

Example:

```
emcli import_update -file=/tmp/<opar_file>.opar -omslocal
```

- If you are running the EMCLI utility on a different system than that on which `<opar_file>.opar` resides, run this command:

```
emcli import_update
-file="<fully-qualified path to the .opar file>"
-host="<hostname of Application Management Pack host>"
-credential_name="<credential for Application Management
Pack host>"
-credential_owner="<credential owner on the Application
Management Pack host>"
```

where:

`-file`: The absolute path to the `.opar` file on the system on which the file was extracted.

`-host`: The host name for the host target where the file is available.

`-credential_name`: The name of the credentials on the remote system you are connecting to.

`-credential_owner`: The owner of the credentials on the host system you are connecting to.

Example:

```
emcli import_update -file=/tmp/<opar_file>.opar -
host="host1.acme.com" -credential_name="myOracleCred" -
credential_owner="mypassword"
```

- As an alternative to the previous step, you can run the following command:

```
emcli import_update
-file="<fully-qualified path to the .opar file>"
-host="hostname"
-credential_set_name="setname"
```

where:

`-credential_set_name`: The set name of the preferred credential stored in the Management Repository for the host target. It can be one of the following:

`HostCredsNormal`: The default unprivileged credential set.

`HostCredsPriv`: The privileged credential set.

Deploying Application Management Pack for Oracle Enterprise Taxation and Policy Management on OMS

Application Management Pack for Oracle Enterprise Taxation and Policy Management must be deployed on Oracle Management Service (OMS) and Management Agents before it can be used to monitor targets.

To deploy the Application Management Pack on the management servers:

1. If you have an earlier version of Application Management Pack for Oracle Enterprise Taxation and Policy Management, it is recommended that you undeploy it from all agents and OMS before deploying this version. (See notes regarding deployment below and review the section, "Undeploying Application Management Pack for Oracle Utilities".)
2. From the Setup menu, select **Extensibility**, then **Plug-ins**. Enterprise Manager displays the list of plug-ins that have been downloaded and can be deployed on the **Plug-ins** page.
3. On the **Plug-ins** page, select Application Management Pack for Oracle Enterprise Taxation and Policy Management.

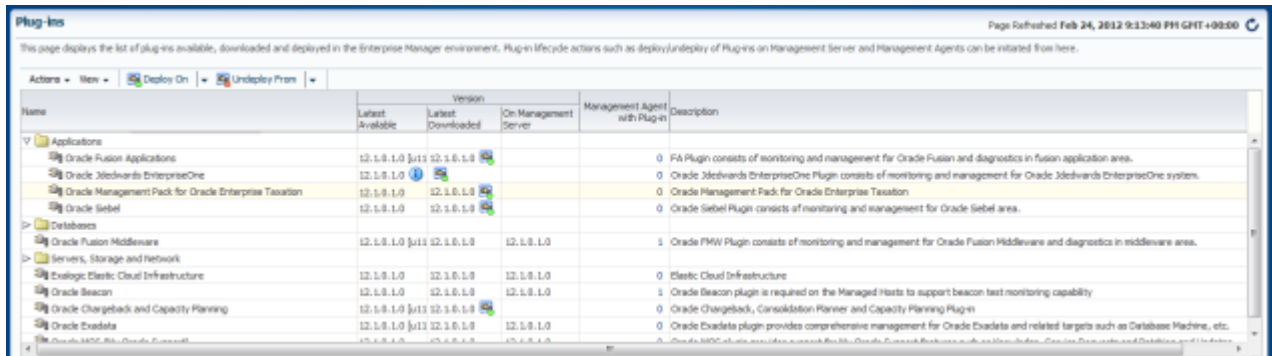


Figure 3: Selecting the Application Management Pack

4. Click **Deploy**, then choose **Management Servers** from the **Deploy** dropdown list.

Important: Application Management Pack for Oracle Enterprise Taxation and Policy Management must be deployed on Management Servers before deployment on Management Agents.

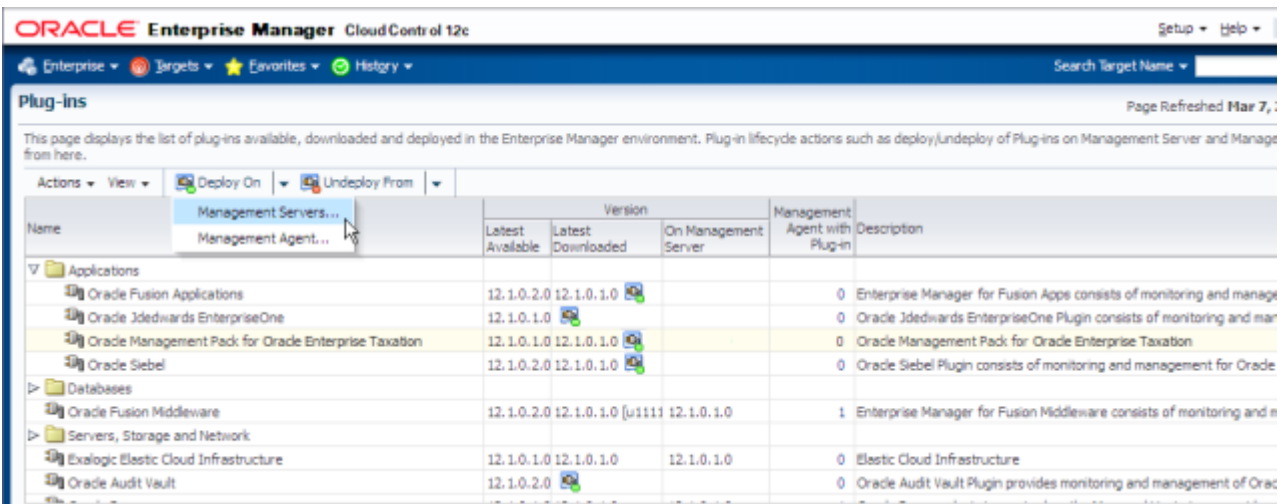


Figure 4: Deploying to Management Servers

5. Enter the required details on the **Deploy Plug-in** dialog box. To deploy on Management Servers, you will need the Management Repository SYS user password to complete the deployment process.

Enter the Repository SYS user password, then click **Continue**.

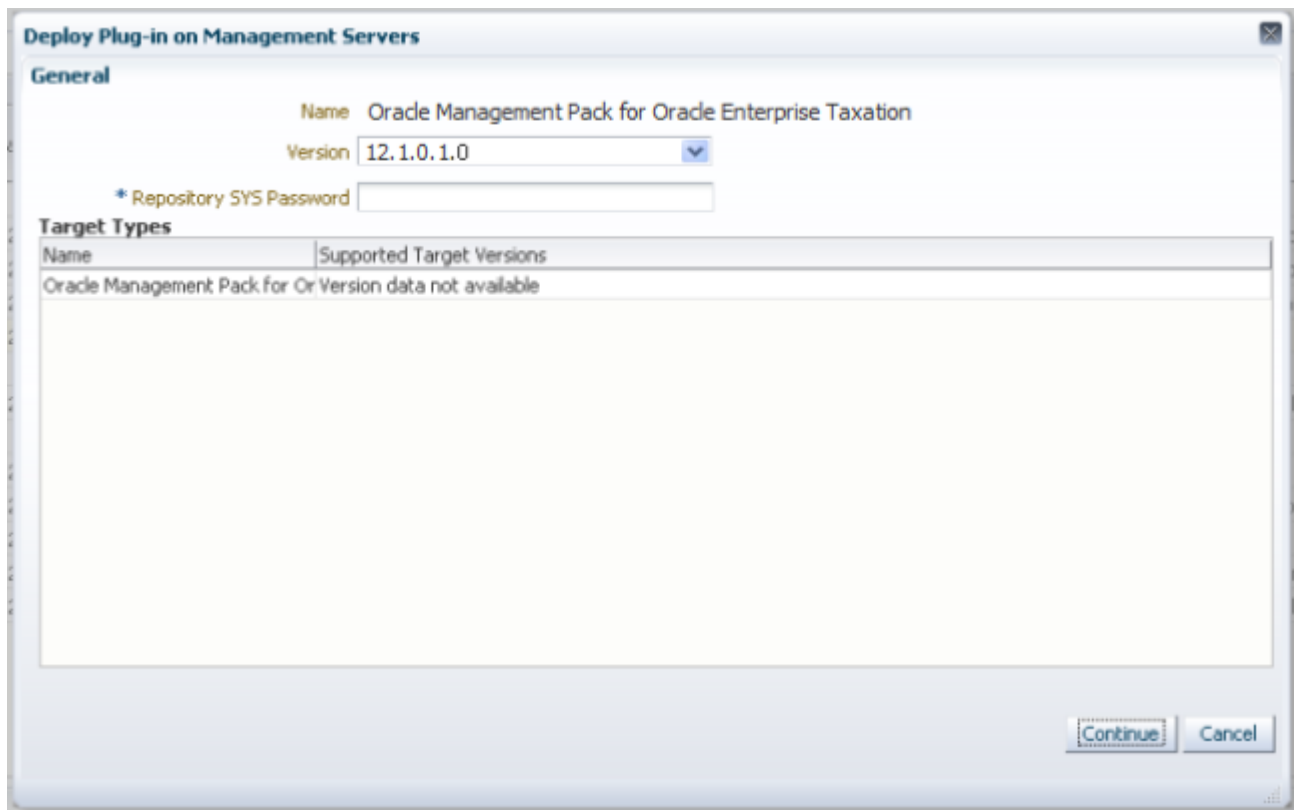


Figure 5: Deploy Plug-in on Management Servers

6. A prerequisite check will be performed. Click **Continue**, then **Next** to proceed through the steps in the **Deploy Plug-in** dialog.
7. Click **Deploy** to deploy the Application Management Pack on all management servers.
8. Click **Show Status** to proceed to the **Deployment Activities** page where you can monitor the deployment status.

To deploy the Application Management Pack on the Management Agents:

9. From the **Setup** menu, select **Extensibility**, then **Plug-ins**.
10. On the **Plug-ins** page, select **Application Management Pack for Oracle Enterprise Taxation and Policy Management**.
11. Click **Deploy**, then choose **Management Agents** from the **Deploy** dropdown list. Note that the agents to which you are deploying must be available.
12. From the popup menu, click the **Add** button, then highlight and select the agents on which you want to deploy the plug-in.
13. Proceed through the succeeding dialogs, then click **Deploy** to deploy the plug-in on the selected Management Agents.
14. To monitor the deployment status, click **Show Status** to open the **Deployment Activities** page.

Note: You can also monitor deployment status through the Cloud Control console by opening the **Plug-ins** page (as described in Step 1), selecting the plug-in, then selecting the **Recent Deployment Activities** tab at the bottom of

the page for the selected plug-in. This section also displays important plug-in details, including ID, version, vendor, etc.

If plug-in deployment fails, check the logs at `$ORACLE_HOME/cfgtoollogs/pluginca/`. These logs can be used to debug deployment issues, and should always be included if a deployment failure support request is filed.

Notes Regarding Deployment and Undeployment

- To avoid permission issues, we recommend that the host agent be deployed using the same user name as the OUAF system user (`cissys`). Alternatively, the agent user must have the same access rights as the OUAF system user of the Oracle Utilities Framework environments to be monitored.
- You can import multiple versions of the same plug-in. Versions can be selected from a list if you are using Cloud Control to deploy the plug-in, or can be specified on the command line if using EMCLI.
- Only one version can be deployed on the Oracle Management Service (OMS) at any given time. If a later version has been deployed previously, it cannot be downgraded to an earlier version. If you want to deploy a later version, the earlier version must be undeployed from all agents on which it has been deployed, as well as from OMS.
- Updating a plug-in to a new version does *not* remove the content of the older plug-in(s) that were imported. That is, the older plugin will *not* be deleted from Enterprise Manager's self-update facility.
- The Management Agent can have the same or earlier version of the plug-in that is deployed on the OMS. A version later than the version on the OMS is not allowed on the Management Agent.
- The plug-in on OMS and the Management Agent can be updated independently of each other as long as the version on the OMS is the latest version.
- To maintain consistency and to avoid any versioning issues, it is recommended that OMS and the agent have the same version of the plug-in.
- Available updates are listed on the **Plug-ins** page.

Adding Instances for Monitoring

After successfully deploying the plug-in, add target instances for central monitoring and management.

Environment Discovery

In order for a target to be monitored, it must first be discovered and promoted. Discovery is the process of making a target instance known to OEM. Once this has been done, the target needs to be promoted from an unmanaged to a managed state.

Availability of the environment as a whole is evaluated based on the status of the application server. Other parts of the system that are being monitored, such as the database and threadpool worker, may be up "Up" but the target's overall status is based on whether or not the application server is available via http.

To discover target environments:

1. Log in to Enterprise Manager.

2. Choose Setup > Add target > Configure Auto Discovery.

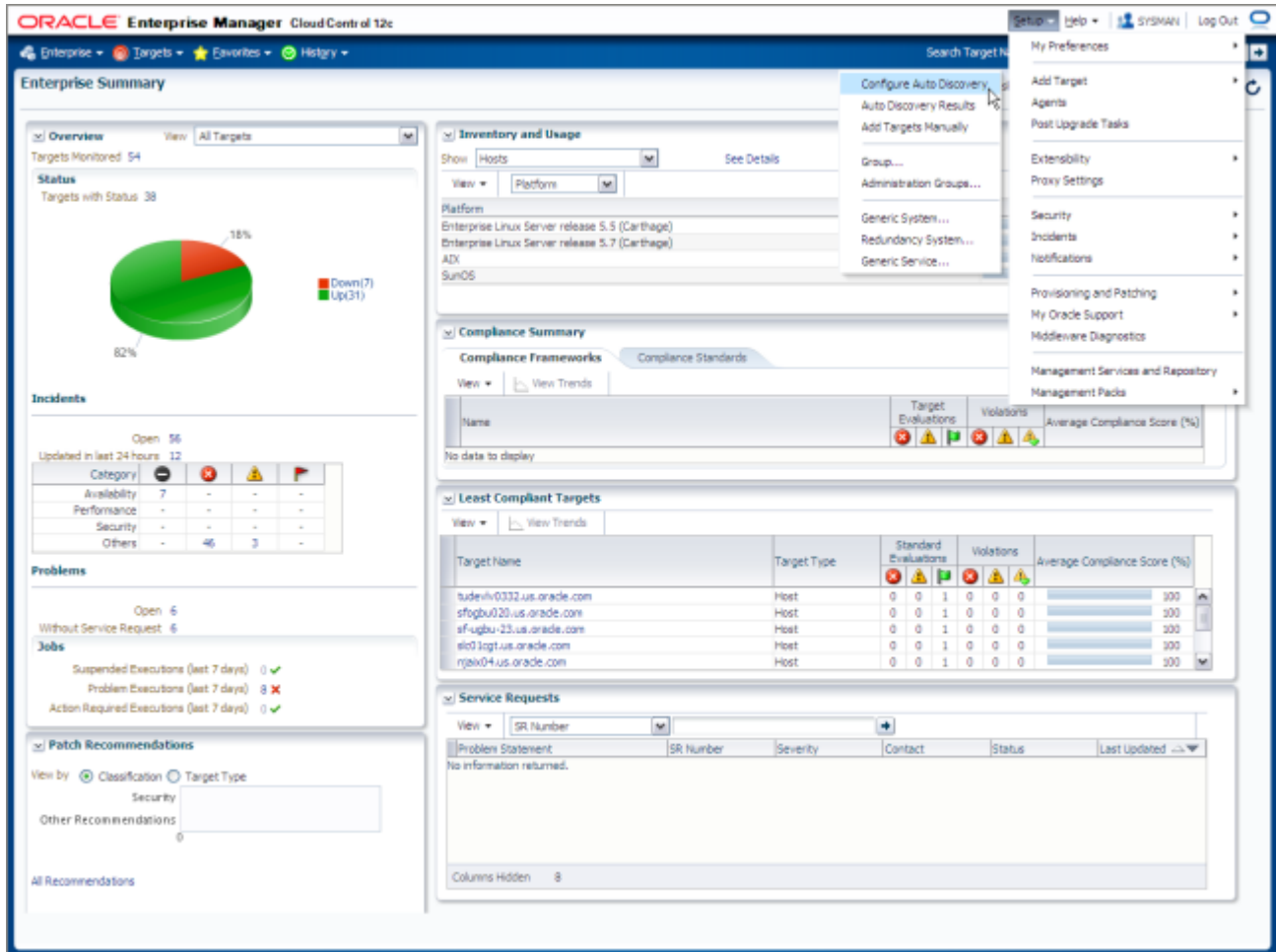


Figure 6: Selecting Auto Discovery

3. On the Configure Auto Discovery page, select the Application Management Pack for Oracle Enterprise Taxation and Policy Management module in the Discovery Module list, then click the item's Configure icon.

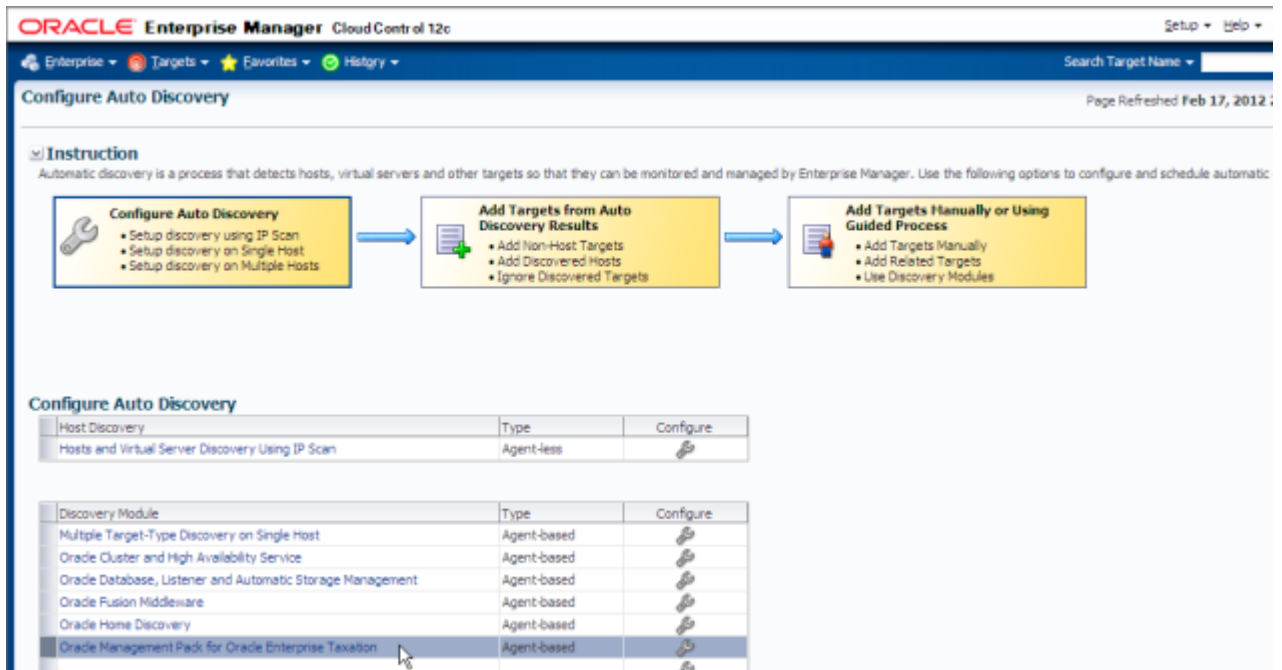


Figure 7: Configuring Auto Discovery

4. Ensure that the target host is on the list. If the target host is not on the list, add it by clicking the 'Add host' button and opening the Add Host dialog. Choose the host and click OK.

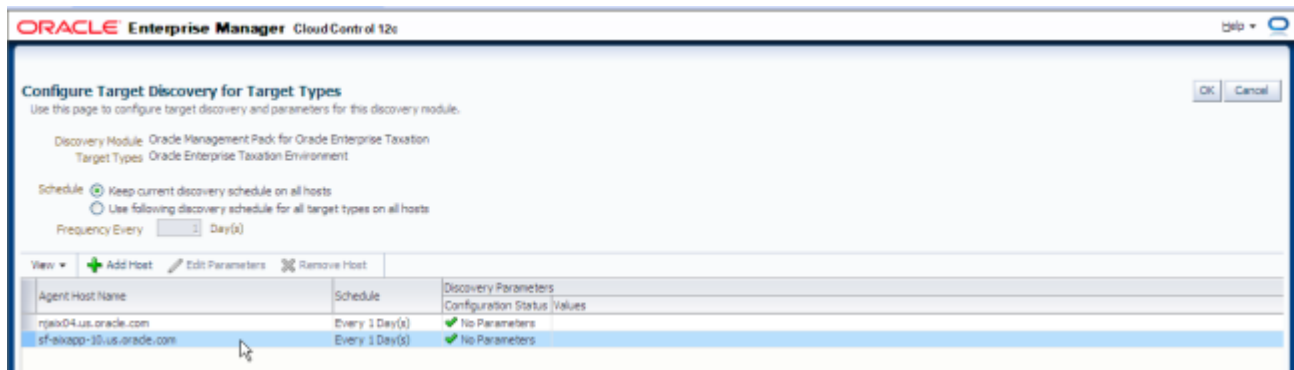


Figure 8: The Add Host dialog

5. Reopen the **Configure Auto Discovery** page, choose **Multiple Target-Type Discovery on Single Host**, and click the **Configure** button.

ORACLE Enterprise Manager Cloud Control 12c Setup Help

Enterprise Targets Favorites History Search Target Name

Configure Auto Discovery Page Refreshed Feb 17, 2012

Instruction
Automatic discovery is a process that detects hosts, virtual servers and other targets so that they can be monitored and managed by Enterprise Manager. Use the following options to configure and schedule automatic discovery.

Configure Auto Discovery

Host Discovery	Type	Configure
Hosts and Virtual Server Discovery Using IP Scan	Agent-less	

Discovery Module	Type	Configure
Multiple Target-Type Discovery on Single Host	Agent-based	
Oracle Cluster and High Availability Service	Agent-based	
Oracle Database, Listener and Automatic Storage Management	Agent-based	
Oracle Fusion Middleware	Agent-based	
Oracle Home Discovery	Agent-based	

Figure 9: Choosing Multiple Target-Type Discovery on Single Host

The **Target Discovery (Agent Based)** window opens.

- Choose the host to discover and press the **Run Discovery Now** button.

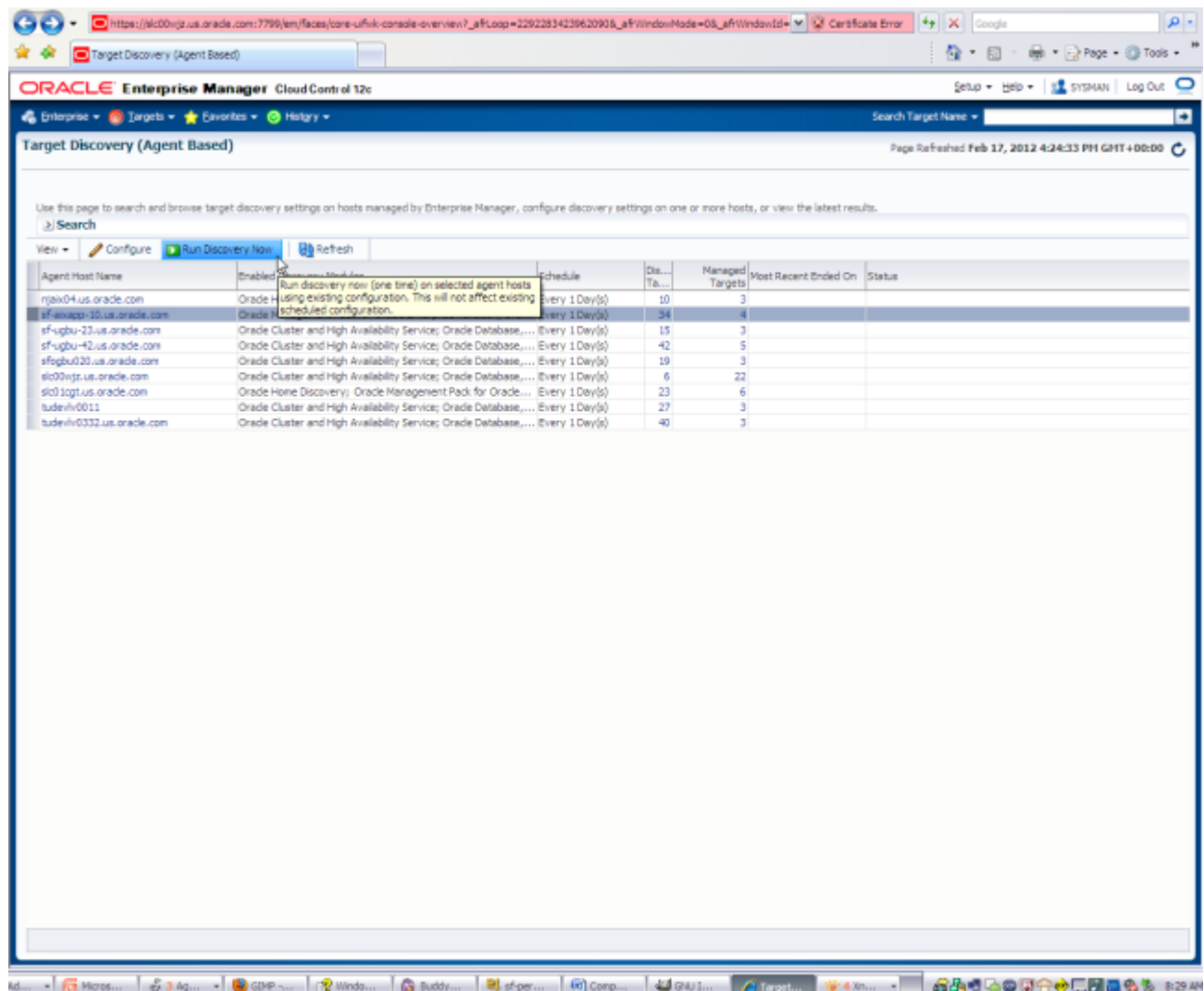


Figure 10: Choosing a host to discover

A confirmation dialog appears on successful discovery of the host.

7. Click **Close** to dismiss the confirmation dialog.

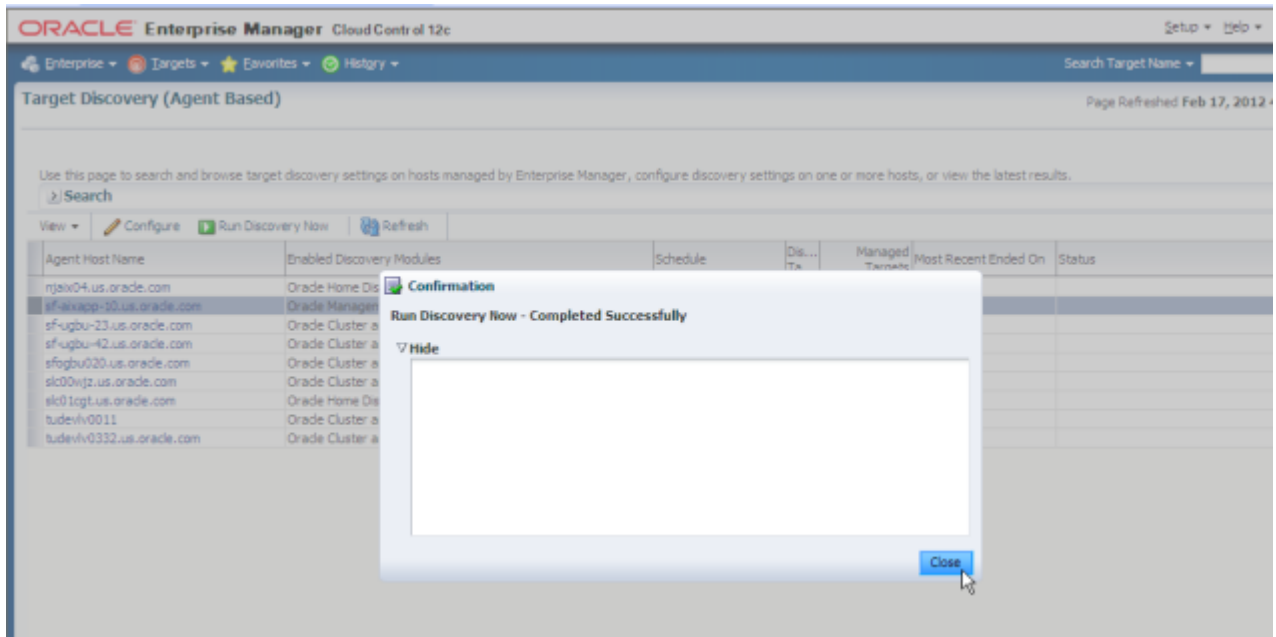


Figure 11: Host discovery confirmation dialog

Promoting Targets

To promote targets so they can be managed:

1. Log in to Enterprise Manager.
2. Choose **Setup > Auto Discovery Results**.

The **Target Discovery (Agent Based)** window opens.

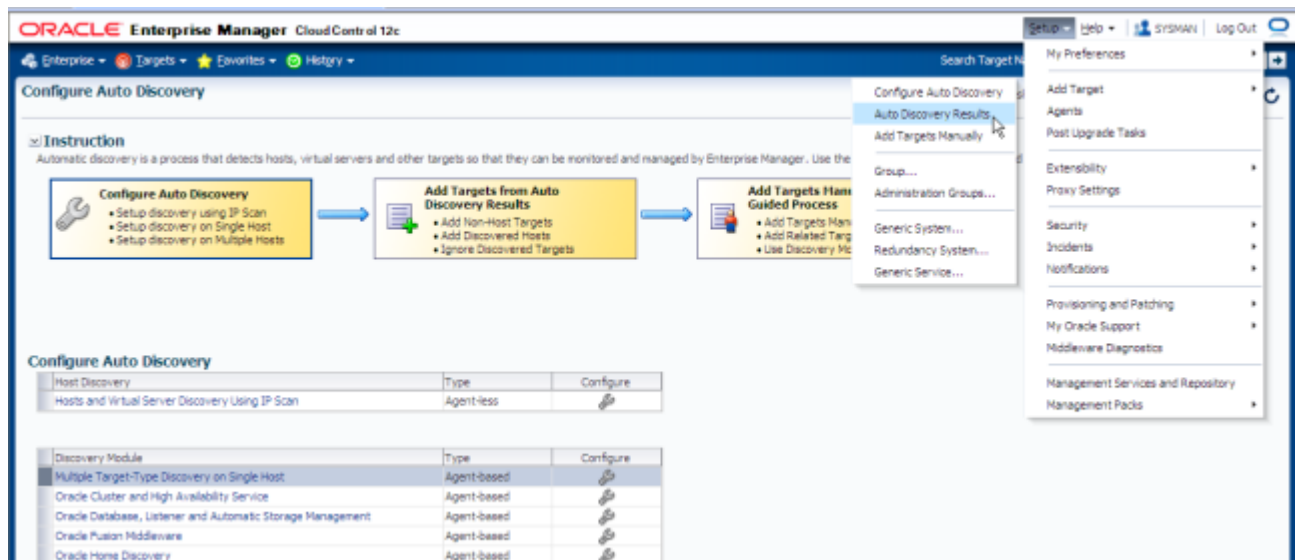


Figure 12: Target Discovery (Agent Based) window

3. Click the **Non-Host Targets** tab.

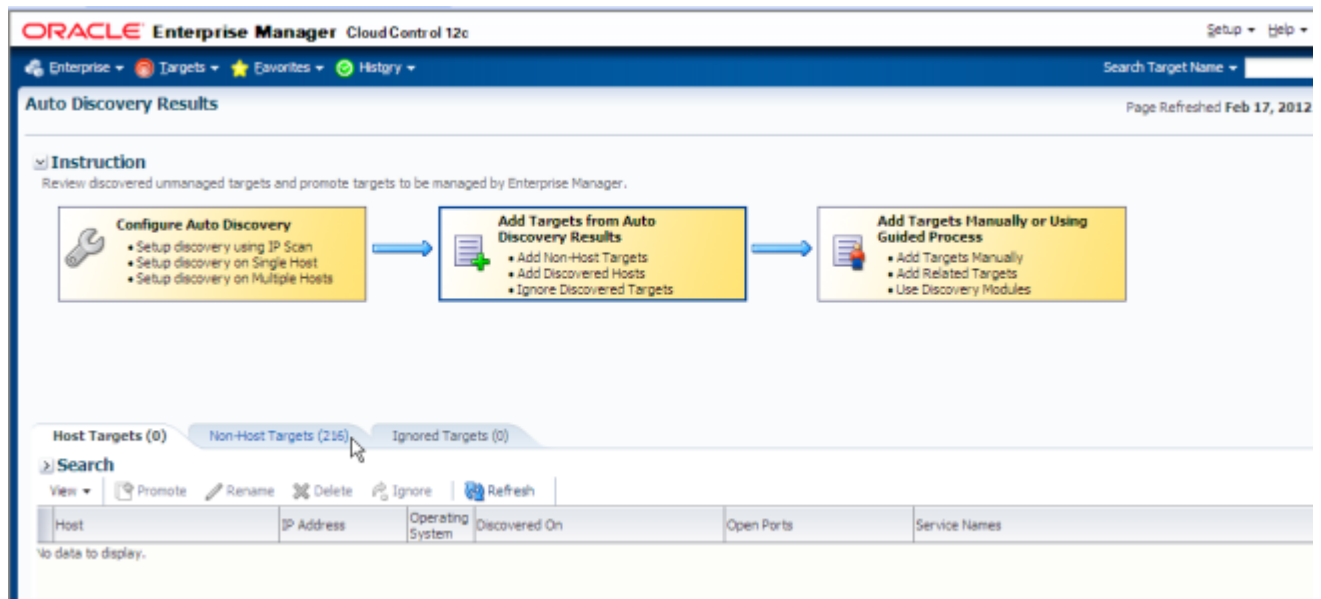


Figure 13: Auto Discovery Results window

4. In the **Results** list, select the target environment you want to promote from an *Unmanaged* to *Managed* state, then press the **Promote** button.

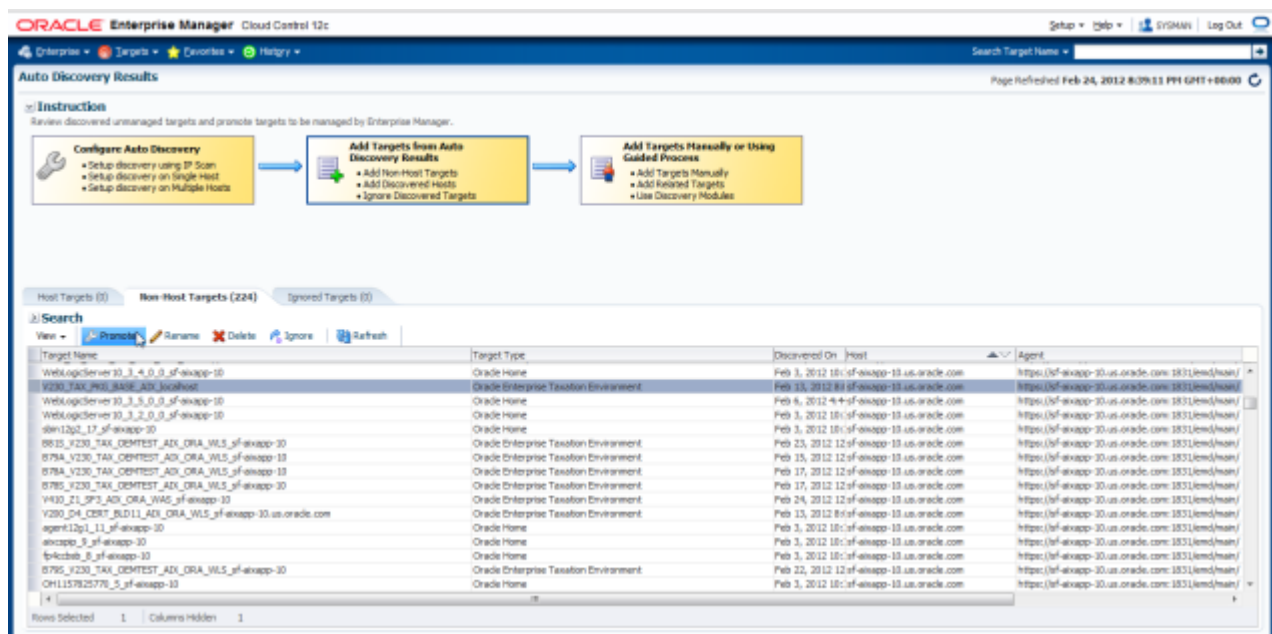


Figure 14: Promoting a target environment

5. The **Promote Unmanaged Target** window appears, displaying properties for the target. Press the **Promote** button.

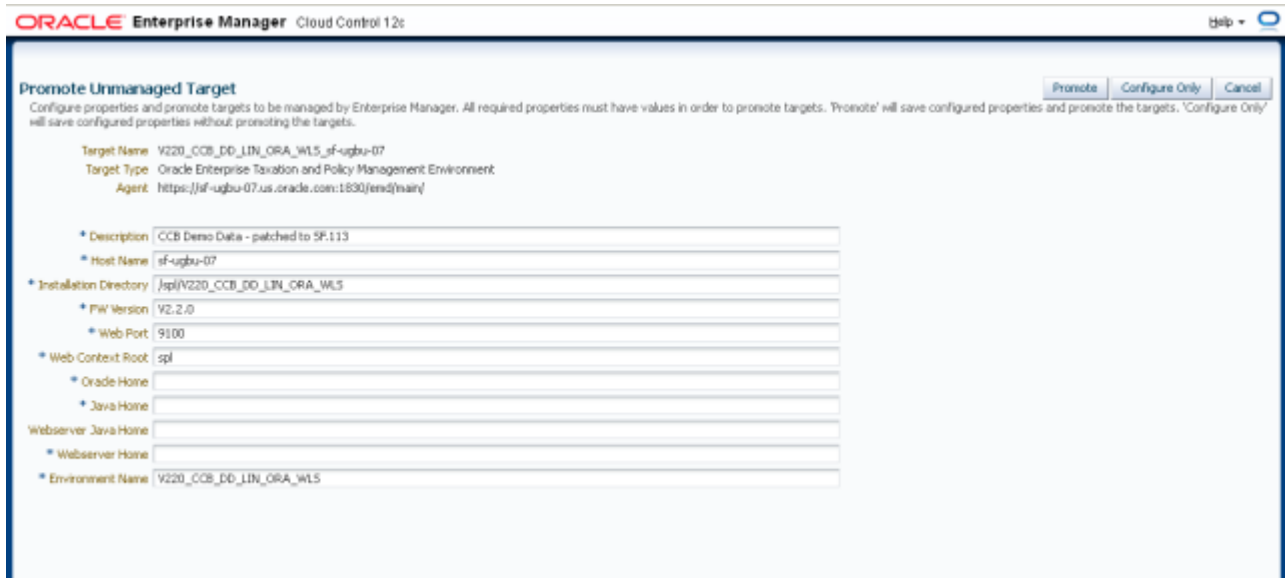


Figure 15: Unmanaged target properties

A confirmation dialog appears when the promotion is successful.

Most of the fields are pre-populated, but, depending on the Framework version of the target environment, some fields may need to be filled in.

For all Framework version 2.2.0-based target environments, enter the location for Oracle Home and Java Home.

For all Framework version 2.2.0 based environments running on Linux with WebLogic, enter (in addition to Java Home and Oracle Home) the Web Server Home and Web Server Java Home values. Note that Web Server Home is the location on which the WebLogic software is installed (e.g., /spl/middleware10.3.3./wlserver_10.3). Web Server Java Home is the Java location that is used as JAVA_HOME by the Web Server. For WebLogic servers on Linux, it is same value as JROCKIT_HOME.

6. Click **Close** to dismiss the confirmation dialog.
7. If any changes are made to the environment configuration using the command-line utilities (e.g., `configureEnv.sh/cmd`), the corresponding changes must also be made to the target properties. The quickest way to do this is to remove the target and perform the discovery and promotion process. You can also make changes by choosing **Target > Setup > Monitoring Configuration** and making the appropriate updates on the UI page.



Figure 16: Monitoring Configuration

Undeploying Application Management Pack for Oracle Enterprise Taxation and Policy Management

To undeploy Application Management Pack for Oracle Enterprise Taxation and Policy Management, you must undeploy from both Management Agents and Management Servers.

To undeploy from Management Agents:

1. Log in to Enterprise Manager as a Super Administrator.
2. Select the **Targets** tab, and then the **All Targets** subtab.
3. Select the Application Management Pack for Oracle Enterprise Taxation and Policy Management Plug-in target and click **Remove**.

Important: You must perform this step for all targets of the plug-in.

4. Ensure that the preferred credentials are set on the Management Agents on which the plug-in is deployed. To access the **Preferences** page, select **Preferences** from the top-right corner of the Enterprise Manager Cloud Control console.
5. On the upper-right corner of the Cloud Control home page, click **Setup**, then navigate to **Extensibility and Plugins** to get to the **Plugins** page.
6. Highlight the line containing Application Management Pack for Oracle Enterprise Taxation and Policy Management then select **Management Agents** from the **Undeploy** dropdown list.
7. Add all **Agents** that are currently deployed with the Application Management Pack for Oracle Enterprise Taxation and Policy Management plug-in, then click **Continue**, then **Undeploy**.

The **Undeploy Management Plug-in** page appears.

8. Check all Agents that are currently deployed with the Application Management Pack for Oracle Enterprise Taxation and Policy Management plug-in and click **OK**.

Important: You must undeploy the plug-in from every Management Agent in the system before you can undeploy from Management Servers.

To undeploy from Management Servers:

9. On the upper-right corner of the Cloud Control home page, click **Setup**, then navigate to **Extensibility and Plugins** to get to the **Plugins** page.
10. Highlight the line containing Application Management Pack for Oracle Enterprise Taxation and Policy Management, then select **Management Servers** from the **Undeploy** dropdown list.
11. Enter the Management Repository SYS user password when prompted, then click **Continue**, then **Undeploy**.

Documentation Accessibility

Our goal is to make Oracle products, services, and supporting documentation accessible to all users, including users that are disabled. To that end, our documentation includes features that make information available to users of assistive technology.

For information about Oracle's commitment to accessibility, visit the Oracle Accessibility Program website at <http://www.oracle.com/pls/topic/lookup?ctx=acc&id=docacc>.

Accessibility of Code Examples in Documentation

Screen readers may not always correctly read the code examples in this document. The conventions for writing code require that closing braces should appear on an otherwise empty line; however, some screen readers may not always read a line of text that consists solely of a bracket or brace.

Accessibility of Links to External Web Sites in Documentation

This documentation may contain links to Web sites of other companies or organizations that Oracle does not own or control. Oracle neither evaluates nor makes any representations regarding the accessibility of these Web sites.

Access to Oracle Support

Oracle customers have access to electronic support through My Oracle Support. For information, visit <http://www.oracle.com/pls/topic/lookup?ctx=acc&id=info> or visit <http://www.oracle.com/pls/topic/lookup?ctx=acc&id=trs> if you are hearing impaired.

Application Management Pack for Oracle Enterprise Taxation and Policy Management Installation Guide, Release 12.1.0.2.0

E28043-02

May 2012

Copyright © 2000, 2012, Oracle and/or its affiliates. All rights reserved.

This software and related documentation are provided under a license agreement containing restrictions on use and disclosure and are protected by intellectual property laws. Except as expressly permitted in your license agreement or allowed by law, you may not use, copy, reproduce, translate, broadcast, modify, license, transmit, distribute, exhibit, perform, publish, or display any part, in any form, or by any means. Reverse engineering, disassembly, or decompilation of this software, unless required by law for interoperability, is prohibited.

If this software or related documentation is delivered to the U.S. Government or anyone licensing it on behalf of the U.S. Government, the following notice is applicable:

U.S. GOVERNMENT RIGHTS : Programs, software, databases, and related documentation and technical data delivered to U.S. Government customers are "commercial computer software" or "commercial technical data" pursuant to the applicable Federal Acquisition Regulation and agency-specific supplemental regulations. As such, the use, duplication, disclosure, modification, and adaptation shall be subject to the restrictions and license terms set forth in the applicable Government contract, and, to the extent applicable by the terms of the Government contract, the additional rights set forth in FAR 52.227-19, Commercial Computer Software License (December 2007). Oracle America, Inc., 500 Oracle Parkway, Redwood City, CA 94065.

This software or hardware is developed for general use in a variety of information management applications. It is not developed or intended for use in any inherently dangerous applications, including applications which may create a risk of personal injury. If you use this software or hardware in dangerous applications, then you shall be responsible to take all appropriate fail-safe, backup, redundancy

and other measures to ensure its safe use. Oracle Corporation and its affiliates disclaim any liability for any damages caused by use of this software or hardware in dangerous applications.

Oracle and Java are registered trademarks of Oracle and/or its affiliates. Other names may be trademarks of their respective owners.

This software or hardware and documentation may provide access to or information on content, products and services from third parties. Oracle Corporation and its affiliates are not responsible for and expressly disclaim all warranties of any kind with respect to third party content, products and services. Oracle Corporation and its affiliates will not be responsible for any loss, costs, or damages incurred due to your access to or use of third party content, products or services.

Third-party licenses relating to Enterprise Manager and this Application Management Pack are available for viewing online at the Oracle Technology Network (OTN) site at: Third-Party Licenses (http://docs.oracle.com/cd/E24628_01/license.121/e24474/appendix_a.htm#BGBEAAJC). Note: The OTN site may require sign-in.