

Product Installation Manual
Oracle Financial Services Asset Liability Management
Version 5.2
October 2010



Document Control

Author: Niraj Ranjan Biswal	Group: Oracle Financial Services Analytical Applications Infrastructure	
Created on : 22-Sep-2010	Revision No : 1.2	
Updated by : Niraj Ranjan Biswal	Reviewed by : Lilavati Shirodkar	Approved by: Lilavati Shirodkar
Updated on : 1-Oct-2010	Reviewed on : 1-Oct-2010	Approved on : 1-Oct-2010

Table of Contents

About this Manual	1
Audience	1
Scope	1
Organization of the Manual	1
Conventions Used in this Manual	1
Pre-Requisites	2
Environment.....	2
Prerequisites.....	2
Front-End Access	2
Installing Oracle Financial Services Asset Liability Management v5.2 Product.....	3
Pre-Installation Activities	3
Pre-Upgrade Activities.....	4
Oracle Financial Services Asset Liability Management v5.2 Product Installation.....	8
Machine A – Product App Layer.....	9
Machine B – Product Database Layer.....	16
Machine C – Product Web Layer.....	23
Silent Installation.....	30
Post Installation Activities	33

About this Manual

Oracle Financial Services Asset Liability Management helps Banks and Financial services institutions manage and monitor interest rate risk, liquidity risk, foreign currency risk and earnings risk. The application models every loan, deposit, investment portfolio individually to help institutions better understand the risks they have assumed and their sensitivity to economic conditions.

Audience

This Manual is meant for use by the Oracle Financial Services Analytical Applications Infrastructure System Administrator. It provides step-by-step instructions necessary for installing the Oracle Financial Services Asset Liability Management v5.2 Product.

Scope

This manual provides a step-wise instruction to install the Oracle Financial Services Asset Liability Management Product in an existing Oracle Financial Services Analytical Applications Infrastructure hosted in RHEL 5.3/OEL 5.3 -Oracle 11g R2 (11.2.0.1.0)(Real Application Clusters).

Organization of the Manual

The Installation Manual is organized into the following chapters.

Pre Requisites section identifies the hardware and base software environment that is required for a successful installation & functioning of the Oracle Financial Services Analytical Applications Infrastructure Solution.

Installing Oracle Financial Services Analytical Applications Infrastructure Solution section details the pre-installation activities followed by a step-by-step instruction on the various installation options.

Post installation Activities section details the steps that are required to be performed after a successful installation of the Oracle Financial Services Analytical Applications Infrastructure Solution.

Conventions Used in this Manual

References to sections or chapters in the manual are displayed in *Italics*.

Screen names are displayed in the following manner:

Introduction screen

Options and buttons are displayed in **Bold**.

Notes are displayed as follows:

NOTE

- It is important that the password should be 6 characters long. If you do not adhere to this pre-requisite, you will see a system message that reads **Password must be at least 6 characters long**.

Pre-Requisites

The installation process requires certain environmental variables to be set prior to starting the installation. You must ensure that these requirements are met before starting the installation. You are requested to refer to the Release Notes for the latest updates on hardware or software requirements and the OFSAAI Installation Manual for the environment variables.

Environment

Installation of Oracle Financial Services Asset Liability Management v5.2 Product requires the RHEL 5.3/OEL 5.3 - Oracle 11g R2 (11.2.0.1.0) version of Oracle Financial Services Analytical Applications Infrastructure v7.2 [Release 7.2.3] for RHEL 5.3 to be installed in either a single-tier or multi-tier environment. It is implicit that all base software versions and patch levels required by the RHEL 5.3/OEL 5.3 version of Oracle Financial Services Analytical Applications Infrastructure 7.2 is available and adhered to. The supported web-servers are WebSphere 7.0.0.9, Tomcat 6.0.29 and Weblogic 10.3.1.

NOTE

- If you are doing an up-gradation please make sure that OFSAAI has been upgraded from v7.1 to v7.2.
- The Oracle Financial Services Asset Liability Management v5.2 installer download contains only the ERwin XML file that is required for uploading the model. This file is sufficient to install the v5.2 product. However, this XML file cannot be opened in the ERwin Data modeler tool and hence cannot be used for any data model customization. ERwin file is delivered as a patch and need to be downloaded separately. This ERwin file should be used for any customization of the data model.

Prerequisites

The RHEL 5.3/OEL 5.3 - Oracle 11g R2 (11.2.0.1.0) version of Oracle Financial Services Analytical Applications Infrastructure v7.2, once installed must be configured.

Front-End Access

- Client Machines –Windows XP
- Internet Explorer 7.0 / 8.0
- Java Plug-in 1.5.0_03/1.5.0_07/1.6.0_11
- Acrobat Reader 8.0
- The screen resolutions supported are 1024*768 and 1280*1024

NOTE

- Ensure that Java Plug-in is enabled in the browser settings.

Installing Oracle Financial Services Asset Liability Management v5.2 Product

Pre-Installation Activities

This step is applicable only for v5.2 installation and not applicable of upgrade from v5.1 to v5.2.

The following is the Pre Installation checklist to ensure the readiness to start installing Oracle Financial Services Asset Liability Management Product:

- Oracle Financial Services Analytical Applications Infrastructure v7.2.3 must be successfully installed on RHEL 5.3/OEL 5.3 - Oracle 11g R2 (11.2.0.1.0).
- Create tablespace DATA_TS with appropriate size.
- The config and atomic schema should be two distinct oracle database users.
- Oracle database User for Atomic schema should have the below grants

```
grant select on sys.v_$parameter to <ORACLE_USER>;
grant select on sys.dba_free_space to <ORACLE_USER>;
grant select on sys.dba_tables to <ORACLE_USER>;
grant select on sys.Dba_tab_columns to <ORACLE_USER>;
grant create INDEX to <ORACLE_USER>;
grant create PROCEDURE to <ORACLE_USER>;
grant create RULE to <ORACLE_USER>;
grant create SEQUENCE to <ORACLE_USER>;
grant create SYNONYM to <ORACLE_USER>;
grant create TABLE to <ORACLE_USER>;
grant create VIEW to <ORACLE_USER>;
grant drop INDEX to <ORACLE_USER>;
grant drop PROCEDURE to <ORACLE_USER>;
grant drop RULE to <ORACLE_USER>;
grant drop SEQUENCE to <ORACLE_USER>;
grant drop SYNONYM to <ORACLE_USER>;
grant drop VIEW to <ORACLE_USER>;
grant drop TABLE to <ORACLE_USER>;
grant create session to <ORACLE_USER>;
grant create trigger to <ORACLE_USER>;
grant drop trigger to <ORACLE_USER>;
```

- Information Domain has to be created & segment mapped to it.
- Information Domain should be mapped to an Oracle Financial Services Analytical Applications Infrastructure v7.2.3 User.
- Login with the newly created user ID and upload the ALM Solution Data Model successfully into the Information Domain.

NOTE

- If any other solution is already installed in an Information Domain(atomic schema), then we need perform Incremental Model Upload by merging the new model with already uploaded model.
- Create one Application.
- Create two data sources of RDBMS type pointing to the atomic database and the date format should be set as mm/dd/yyyy.
- Map the two data sources to the application and generate source model.

The web.xml under the path \$FIC_WB_HOME \webroot\WEB-INF\ should have Resource tag, if not present add the tag and replace ORDEMO with the INFORMATION DOMAIN name.

```
<resource-ref>
    <description>DB Connection ORDEMO</description>
    <res-ref-name>jdbc/ORDEMO</res-ref-name>
    <res-type>javax.sql.DataSource</res-type>
    <res-auth>Container</res-auth>
</resource-ref>
```

Pre-Upgrade Activities

This step is applicable only during upgrade of application from v5.1 to v5.2.

- Back-up existing config and atomic schema of the information domain that is being upgraded. This can be used to restore back the application, in case of any failures during upgrade.
- Perform the changes made to client data objects within the v5.1 data model into the v5.2 data model. This can be performed within the ERwin Data modeler tool using the Complete Compare tool option. Changes done on v5.1 data model should be merged to the new v5.2 data model through the tool.
- After doing the relevant changes, upload the modified v5.2 data model in the information domain that is being upgraded.
- Object registration batch needs to be executed after upgrading the application.

NOTE:

If you upgrade one application from v5.1 to v5.2, all other v5.1 applications also need to be upgraded to v5.2. A v5.1 app cannot co-exist with a v5.2 app.

Configuration in Websphere Application Server

- Create JDBC Provider for the configuration of connection pool for the above created Information Domain(Refer to: the chapter *Creating the JDBC Provider* of the Oracle Financial Services Analytical Applications Infrastructure 7.2 Installation Manual).
- Create a data source to access the data from the database. (Refer to: the chapter *Creating the Data Source* of the Oracle Financial Services Analytical Applications Infrastructure 7.2 Installation Manual)

- After creating a Data Source, Click the newly created Data Source (\$DATA_SOURCE\$) and navigate to the path

Data sources>\$DATA_SOURCE\$>Connection pools

And set the values for Connection timeout to 0 seconds, Maximum connections to 100 connections, Minimum connections to 10 connections as shown in the below figure.

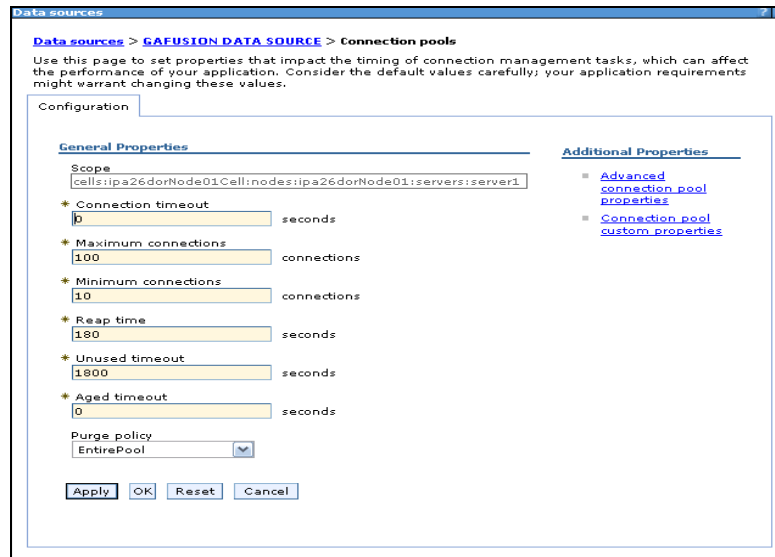


Figure 1:

- Expand the **Server Types** under **Servers** option in the LHS menu. Click on **WebSphere application servers** option. This will display the **Application Servers** page.

Navigate to the **Web Container** option of the application server, under **Custom properties**, add a new property **com.ibm.ws.webcontainer.invokefilterscompatibility** and set the value to **true** Save the new property. Use below figure for reference

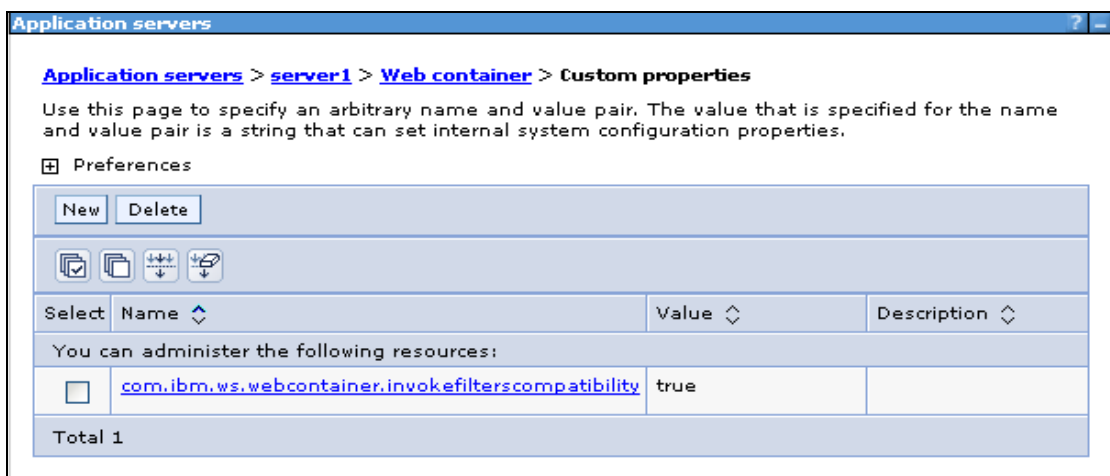


Figure 2:

Configuration in Tomcat Application Server

- Copy \$ORACLE_HOME/jdbc/lib/ojdbc5.jar to the path \$TOMCAT_DIRECTORY/common/lib/
- Edit the server.xml present under the path \$TOMCAT_DIRECTORY\conf\ with the below changes, which is required for connection pooling.

```
<Context path="/" $CONTEXTNAME$ " docBase=" $APP_DEPLOYED_PATH$ "
debug="0" reloadable="true" crossContext="true">
```

```
    <Resource auth="Container"
        name="jdbc/ $INFORMATION DOMAIN_NAME$"
        type="javax.sql.DataSource"
        driverClassName="oracle.jdbc.driver.OracleDriver"
        username=" $ATOMICSCHEMA_USERNAME$"
        password=" $ATOMICSCHEMA_PASSWORD$"
        url=" $JDBC_CONNECTION_URL"
        maxActive="100"
        maxIdle="30"
        maxWait="10000"
        removeAbandoned="true" removeAbandonedTimeout="60"
        logAbandoned="true"/>
```

```
</Context>
```

NOTE

- \$TOMCAT_DIRECTORY\$ should be replaced by Tomcat application installed path
- \$CONTEXTNAME\$ should be replaced by Oracle Financial Services Analytical Applications Infrastructure context name
- \$APP_DEPLOYED_PATH\$ should be replaced by the Oracle Financial Services Analytical Applications Infrastructure application deployed path
- \$INFORMATION DOMAIN_NAME\$ should be replaced by Information Domain Name
- \$ATOMICSCHEMA_USERNAME\$ should be replaced by Atomic schema database user name
- \$ATOMICSCHEMA_PASSWORD\$ should be replaced by Atomic schema database password
- \$JDBC_CONNECTION_URL should be replaced by JDBC connection string

Ex: jdbc:Oracle:thin:<IP>:<PORT>:<SID>

jdbc:oracle:thin 10.80.50.53:1521:soluint

- Configuration in Weblogic Application Server
- Create JDBC Provider for the configuration of connection pool and a data source to access the data from the database for the above created Information Domain(Refer to: the chapter Creating data Source – WebLogic of the Oracle Financial Services Analytical Applications Infrastructure 7.2 Installation Manual).
- After creating a Data Source, Click the newly created Data Source (\$DATA_SOURCE\$) and navigate to the path

And set the values for Initial Capacity to 10, Maximum capacity to 100 ,Capacity Increment by 1, Statement Cache Type to LRU and Statement Cache size to 10 as shown in the below figure.

The screenshot displays the configuration page for a JDBC Data Source. It features five rows of settings, each with a label, a value field, and a descriptive tooltip. The settings are: Initial Capacity (10), Maximum Capacity (100), Capacity Increment (1), Statement Cache Type (LRU), and Statement Cache Size (10). Below the settings is an 'Advanced' section header and a 'Save' button.

Initial Capacity:	<input type="text" value="10"/>	The number of physical connections to create when creating the connection pool. More Info...
Maximum Capacity:	<input type="text" value="100"/>	The maximum number of physical connections that this connection pool can contain. More Info...
Capacity Increment:	<input type="text" value="1"/>	The number of connections created when new connections are added to the connection pool. More Info...
Statement Cache Type:	<input type="text" value="LRU"/>	The algorithm used for maintaining the prepared statements stored in the statement cache. More Info...
Statement Cache Size:	<input type="text" value="10"/>	The number of prepared and callable statements stored in the cache. (This may increase server performance.) More Info...

[Advanced](#)

Figure : 1

- All Oracle Financial Services Analytical Applications Infrastructure v7.2 Servers must be shut down.
- Oracle 11g service must be running.

You must have the following information available and handy before you start the installation:

- The **FTP share path** as configured in Oracle Financial Services Analytical Applications Infrastructure v7.2.
- The name of the **Information Domain** in Oracle Financial Services Analytical Applications Infrastructure v7.2 into which the Oracle Financial Services Asset Liability Management data model has been uploaded.
- The Oracle Financial Services Analytical Applications Infrastructure v7.2 **User ID** that has access to the above Information Domain.

Oracle Financial Services Asset Liability Management v5.2 Product Installation

The Oracle Financial Services Analytical Applications Infrastructure Product comprises of components that are installed in Web, Application & Database layer. Hence if you have installed Oracle Financial Services Analytical Applications Infrastructure 7.2 in a multi-tier architecture, the Oracle Financial Services Asset Liability Management Product installer must be invoked on each of the machines that host the Oracle Financial Services Analytical Applications Infrastructure tier.

For a Single-tier installation, the installer is required to be invoked only once on the machine that hosts all the Oracle Financial Services Analytical Applications Infrastructure tiers.

This section describes the installation process where the Three Product setup components are installed on separate machines in with the Product installation on separate machines. Machine A will be used to install Product Application Layer components, Machine B will be used to install Product Database Layer components and Machine C will be used to install Product Web Layer components.

NOTE

- This section holds applicable if Oracle Financial Services Analytical Applications Infrastructure v7.2 is installed on RHEL 5.3/OEL 5.3 - Oracle 11g R2 (11.2.0.1.0) on separate machines A, B and C respectively.
- Refer to section on “Silent Installation”, if a silent installation is required

Machine A – Product App Layer

Step 1

Copy the Setup.bin and Setup.sh to a folder on the machine that hosts the Oracle Financial Services Analytical Applications Infrastructure application. To begin Oracle Financial Services Asset Liability Management product installation, execute Setup.sh.

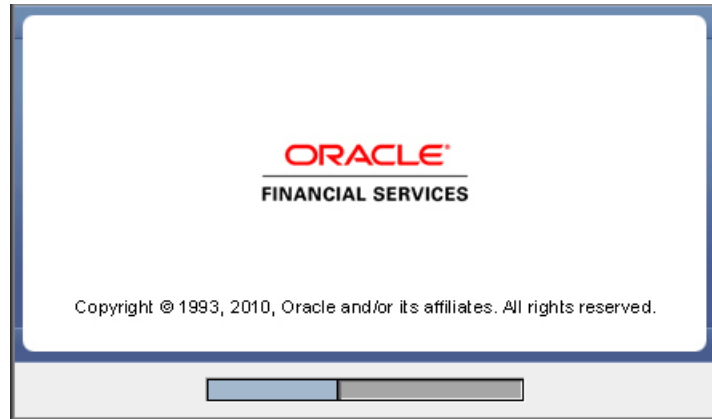


Figure 3: Installation Splash Screen

Step 2

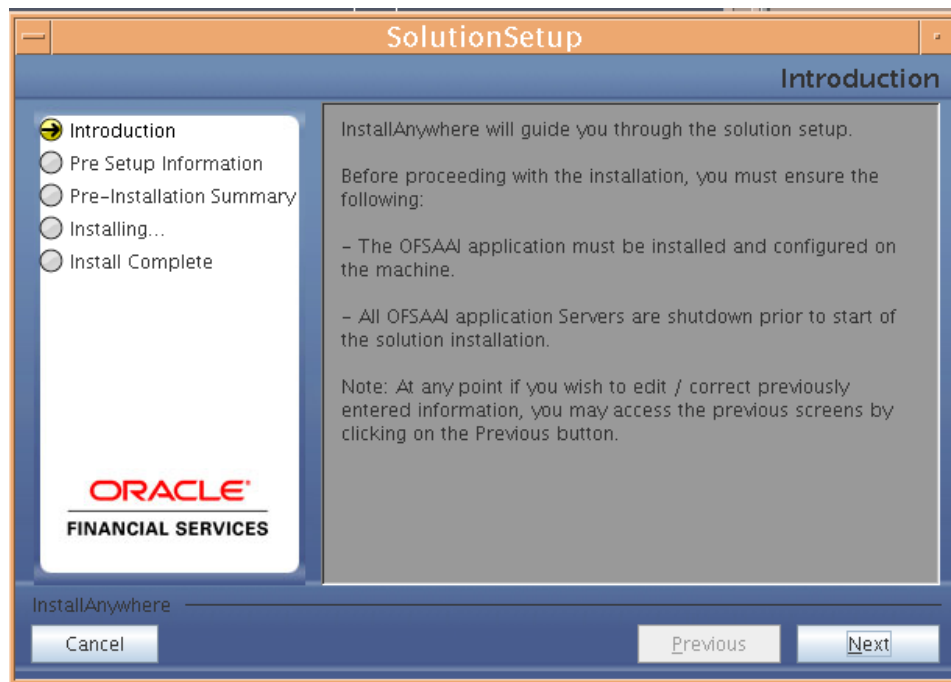


Figure 4: Introduction Screen

Upon invoking the installer, the **Introduction** screen will display the pre-requisites for installation. Ensure that the pre-requisites are satisfied before you proceed.

Step 3

Please choose the log mode for this installer. In case if the Debug is selected, the Passwords will be printed in the Log File (\$FIC_HOME\SolutionsLog.log).

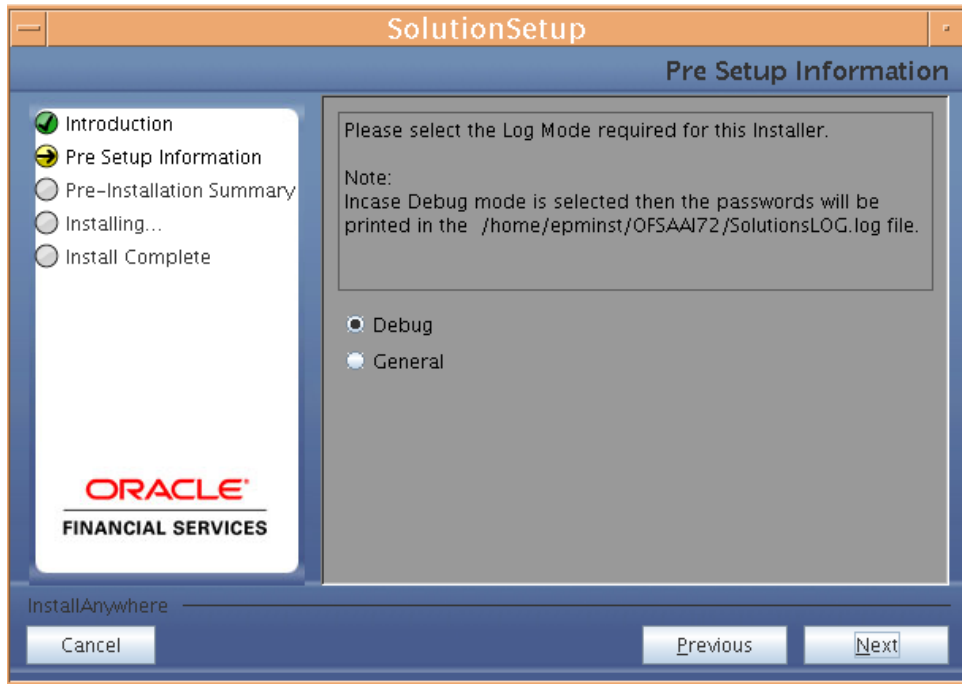


Figure 5: Log Mode Option Screen

NOTE

- SolutionLOG.log name format will be renamed to ALM_<INFORMATION DOMAIN_NAME>_SolutionLOG_<DATE>_<TIME>.log after complete installation.

Step 4

Please provide the 9 digit Customer Identification number provided during the OFSAAI installation.



Figure 6: Customer ID Input Screen

Step 5

The **Pre Setup Information** screen requests for setup information.

Select the appropriate Oracle Financial Services Analytical Applications Infrastructure layer that has been installed on the machine.

Example **AppLayer**

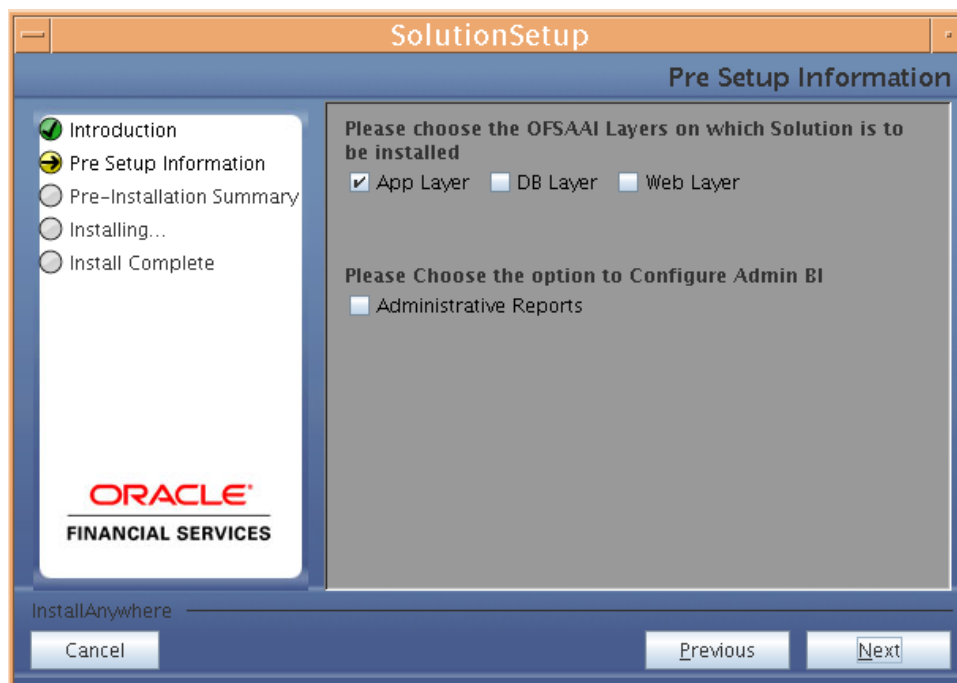


Figure 7: Pre Setup Information Screen – Choose Layer to Install

Along with appropriate Oracle Financial Services Analytical Applications Infrastructure layer choose Administrative Reports to configure the Administrative Reports application.

NOTE

For a single-tier Oracle Financial Services Analytical Applications Infrastructure 7.2 installation, you must select App Layer, DB Layer and Web layer. For a multi-tier Oracle Financial Services Analytical Applications Infrastructure 7.2 installation, select the corresponding layer installed on the machine.

Incase Admin BI is already configured through the previous product installation, the subsequent product installation without Admin BI option may alter the existing Admin BI configuration settings.

Step 6

Enter the Information Domain in which the Oracle Financial Services Asset Liability Management data model has been successfully uploaded and Segment name which is mapped with the Information Domain.

Enter the valid path that has been configured as the ALM Share Path in Oracle Financial Services Analytical Applications Infrastructure 7.2. You may click **Choose** to select the path. Click **Restore Default** to reset the path in case of erroneous entry.

Enter the TNS name for the atomic schema (Same as what you've given in Database Master while creating the Information Domain)

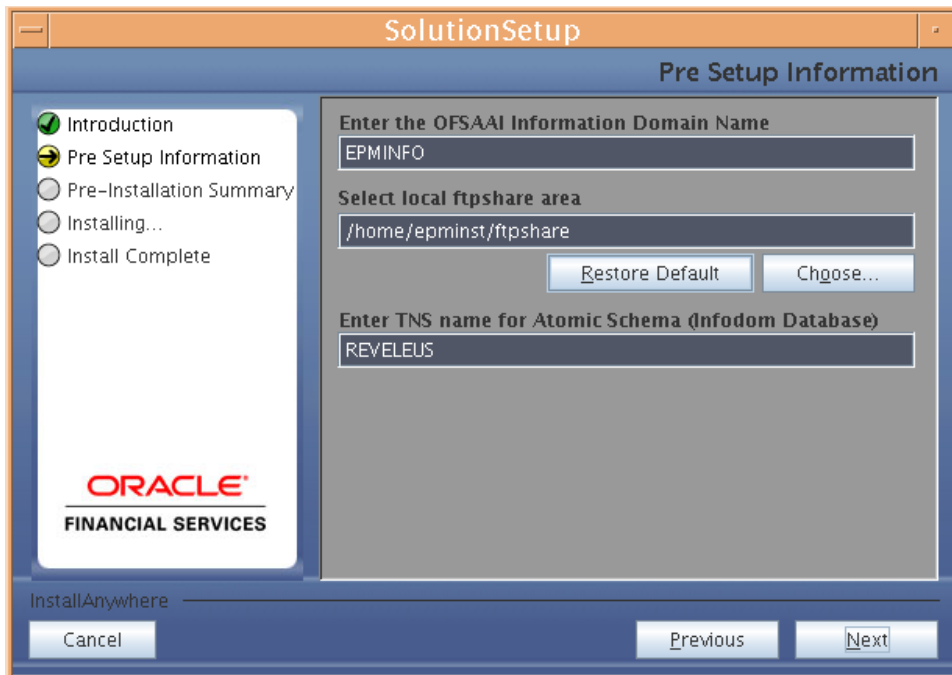


Figure 8: Pre Setup Information Screen – Information Domain Details

Click **Next** to continue.

Step 7

Select the application / source pair which has the source you have created for processing in the first dropdown.

Select the application / source pair which has the source you have created for staging in the second dropdown.

Click **Next** to continue

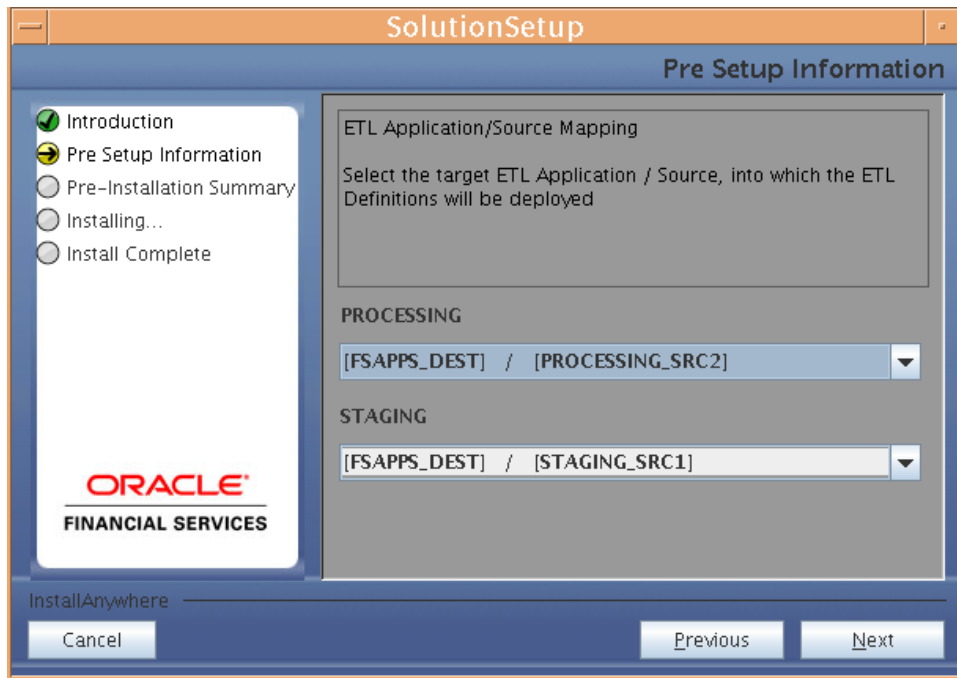


Figure 9: Mapping of application source pair to destination file

Step 8

The **Pre Setup Information** screen requests for the Oracle Financial Services Analytical Applications Infrastructure user ID.

Enter the Oracle Financial Services Analytical Applications Infrastructure user ID that has been mapped to the Information Domains provided earlier.

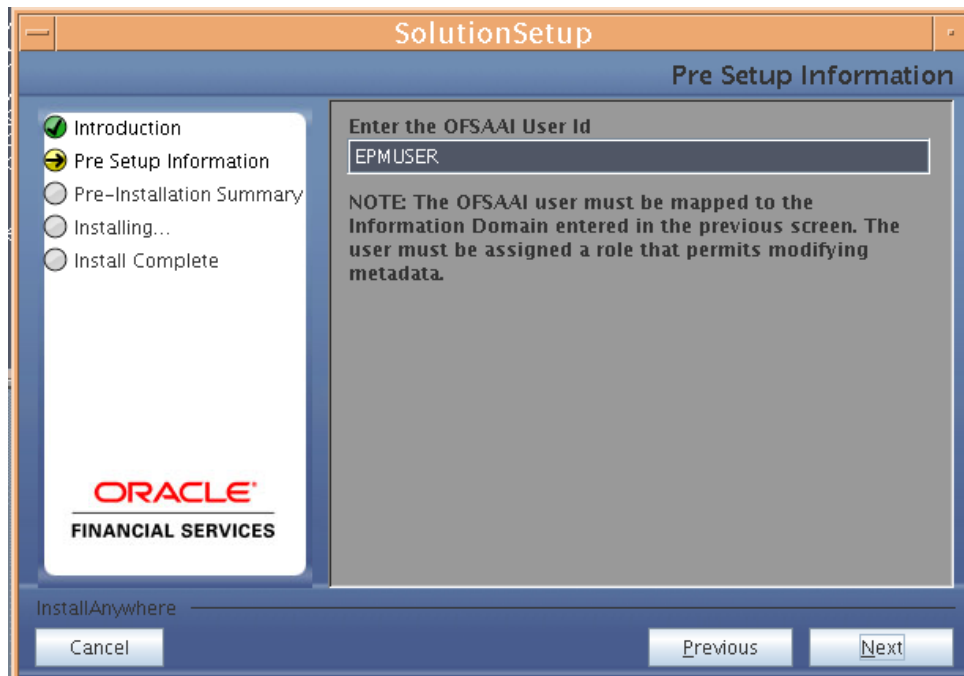


Figure 10: Pre Setup Information screen – Oracle Financial Services Analytical Applications Infrastructure User Details

NOTE

The Oracle Financial Services Analytical Applications Infrastructure user must have a role that is able to perform Add/Modify functions for ALM metadata.

Click **Next** to continue.

Step 9

The Pre-Installation Summary screen outlines the general information about the set up

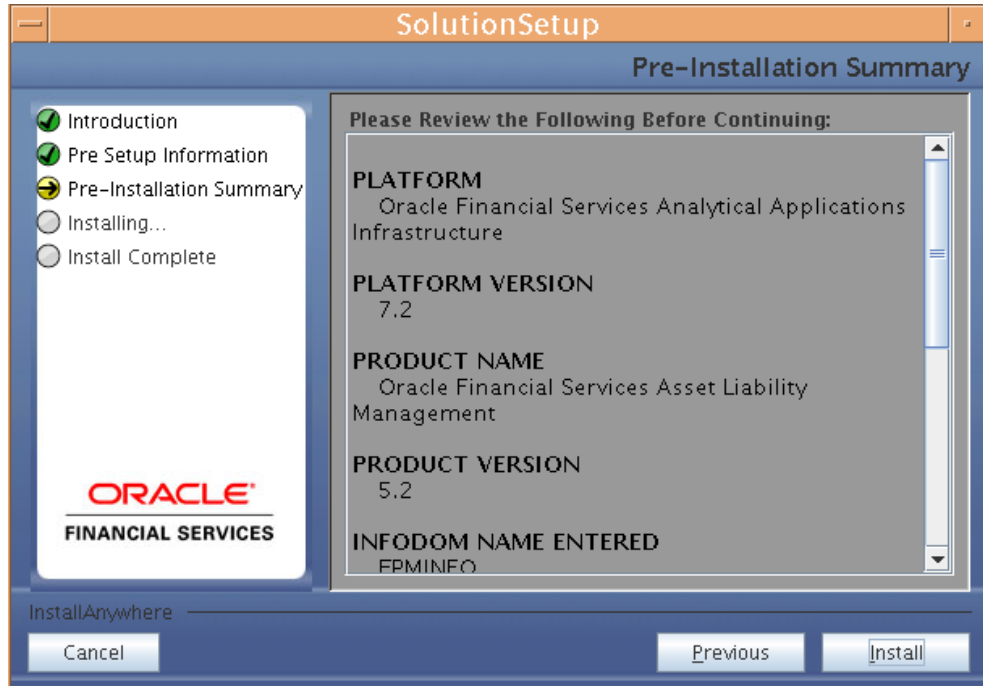


Figure 11: Pre Installation Summary – Oracle Financial Services Analytical Applications Infrastructure User Details

Pre Installation Summary screen will display OFSAI Version, Information Domain name, Segment name etc. If you want to edit the input values like Information Domain name, Segment name you can do the same by clicking Back Otherwise

Click **Install** to continue.

Step 10

The following screen displays the progress of the installation. Upon completion of the process, the installation status is published on the screen. You must access the file SolutionLOG.log in the path \$FIC_HOME to check for errors if any.

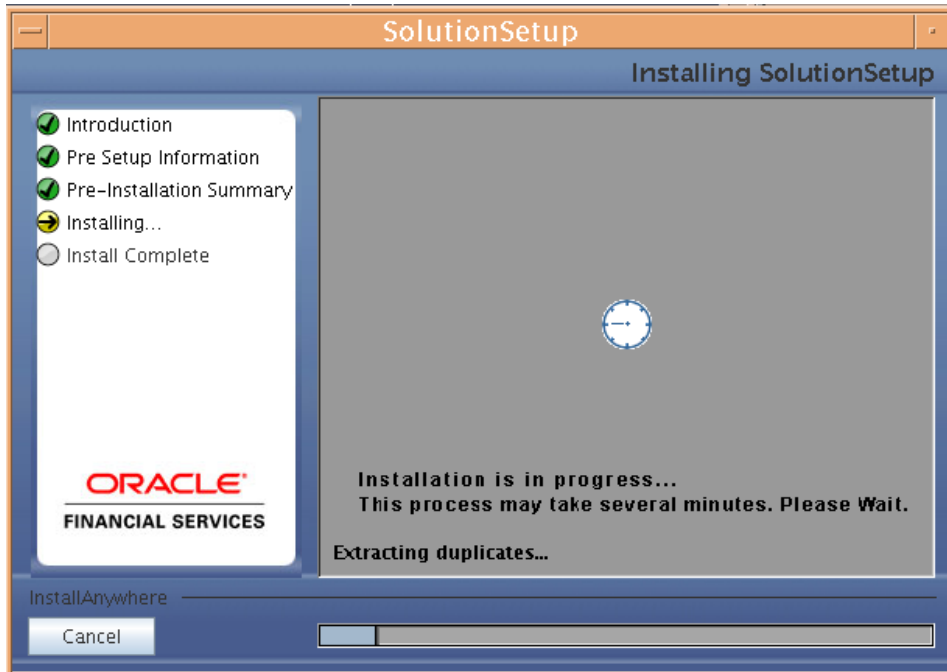


Figure 13: Installation in Progress

NOTE

- \$FIC_HOME is the environment variable set during the Oracle Financial Services Analytical Applications Infrastructure Installation; it refers to the Oracle Financial Services Analytical Applications Infrastructure Installation directory.

Step 11

The following screen displays the successful installation of the Oracle Financial Services Asset Liability Management Product Setup.

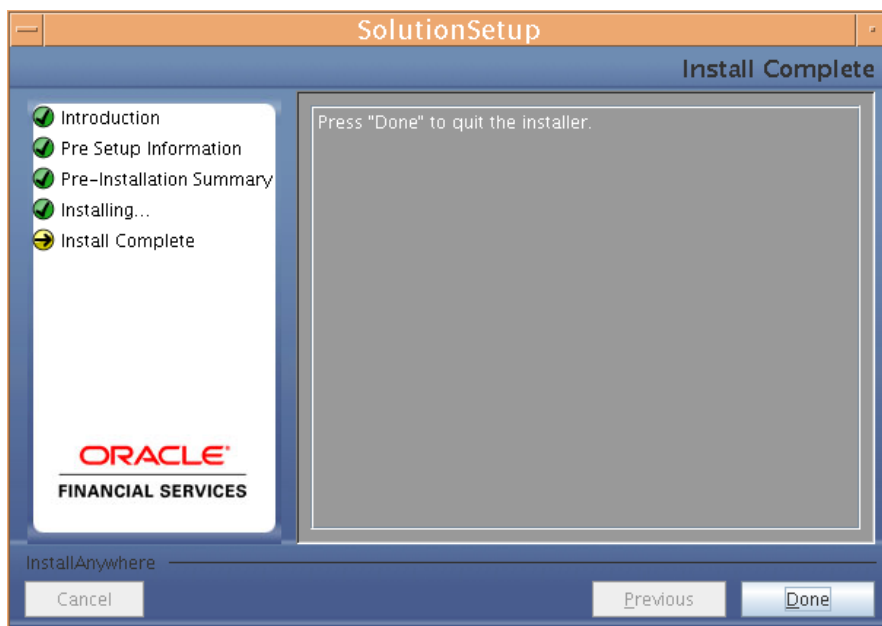


Figure 14: Installation Complete

Click **Done** to quit the installer.

Machine B – Product Database Layer

Step 1

Copy the Setup.bin and Setup.sh to a folder on the machine that hosts the Oracle Financial Services Analytical Applications Infrastructure application. To begin Oracle Financial Services Asset Liability Management Product installation, execute Setup.sh

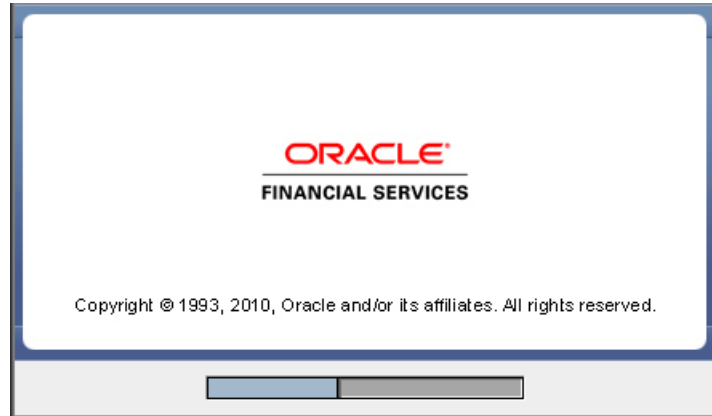


Figure 15: Installation Splash Screen

Step 2

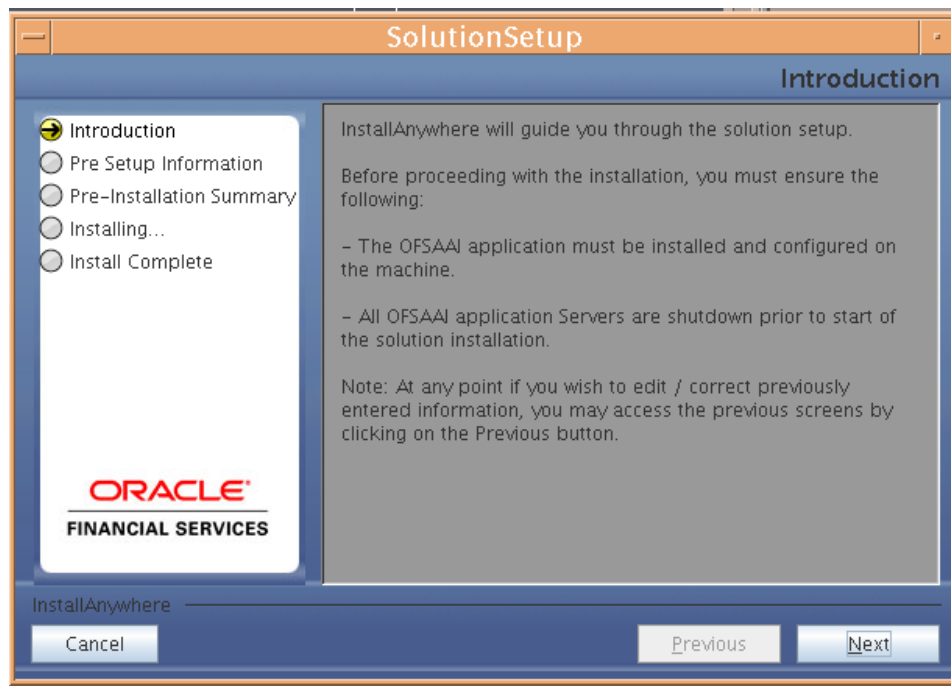


Figure 16: Introduction Screen

Upon invoking the installer, the **Introduction** screen will display the pre-requisites for installation. Ensure that the pre-requisites are satisfied before you proceed.

Step 3

Please choose the log mode for this installer. In case if the Debug is selected, the Passwords will be printed in the Log File (\$FIC_HOME\SolutionsLog.log).

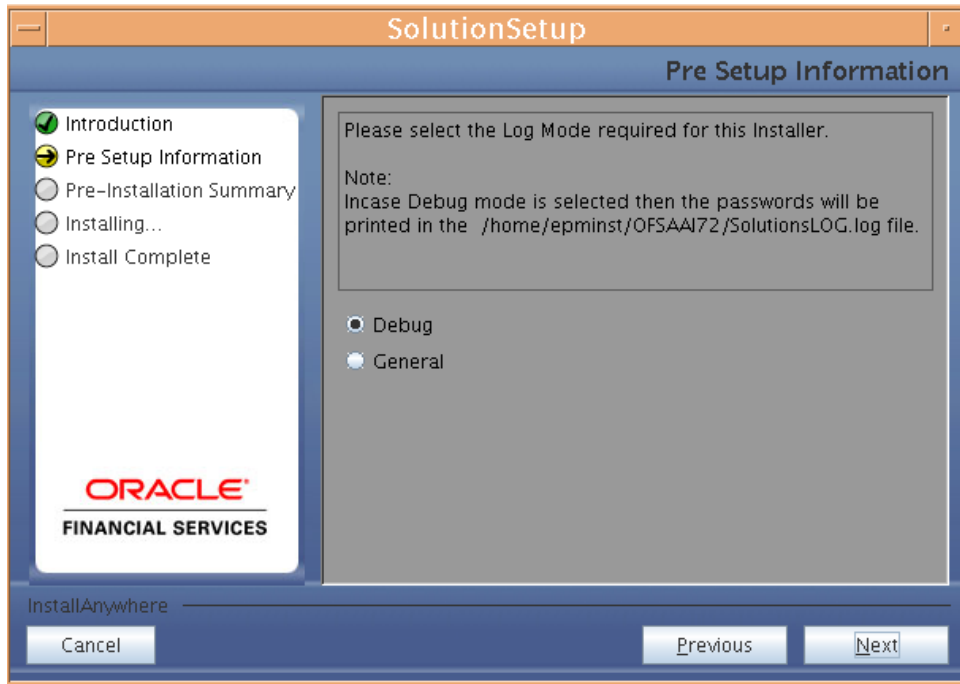


Figure 17: Log Mode Option Screen

NOTE

- SolutionLOG.log name format will be renamed to ALM_<INFORMATION DOMAIN_NAME>_SolutionLOG_<DATE>_<TIME>.log after complete installation.

Step 4

Please provide the 9 digit Customer Identification number provided during the OFSAAI installation.



Figure 18: Customer ID Input Screen

Step 5

The **Pre Setup Information** screen requests for setup information.

Select the appropriate Oracle Financial Services Analytical Applications Infrastructure layer that has been installed on the machine.

Example DB Layer

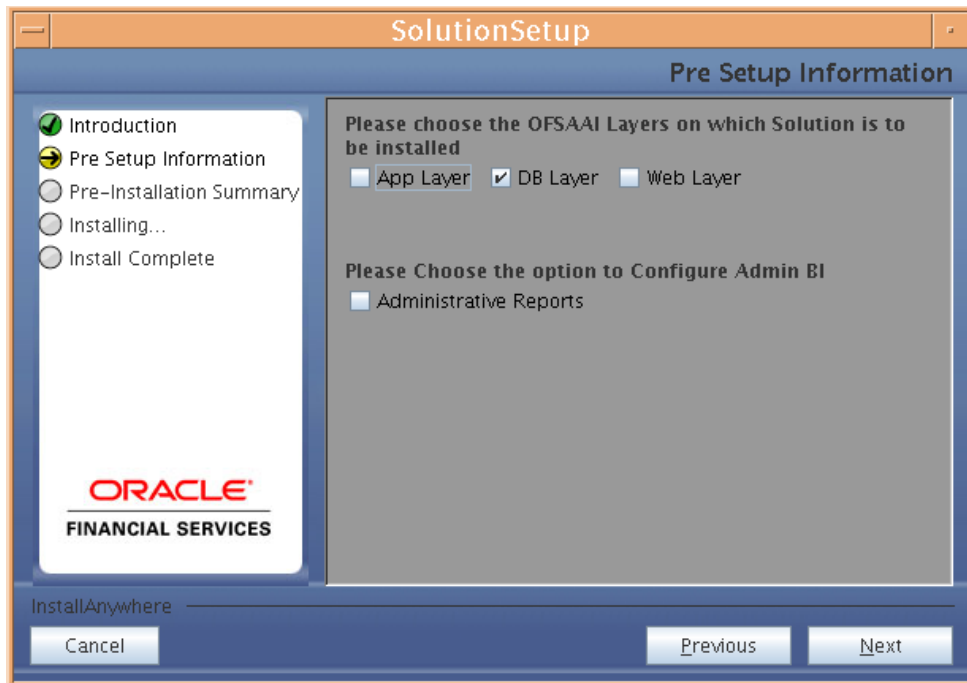


Figure 19: Pre Setup Information Screen – Choose Layer to Install

Along with appropriate Oracle Financial Services Analytical Applications Infrastructure layer choose Administrative Reports to configure the Administrative Reports application

NOTE

For a single-tier Oracle Financial Services Analytical Applications Infrastructure 7.2 installation, you must select App Layer, Web Layer and DB Layer. For a multi-tier Oracle Financial Services Analytical Applications Infrastructure 7.2 installation, select the corresponding layer installed on the machine.

Incase Admin BI is already configured through the previous product installation, the subsequent product installation without Admin BI option may alter the existing Admin BI configuration settings.

o

Step 6

Enter the Information Domain in which the Oracle Financial Services Asset Liability Management data model has been successfully uploaded.

Enter the valid path that has been configured as the ALM Share Path in Oracle Financial Services Analytical Applications Infrastructure 7.2. You may click **Choose** to select the path. Click **Restore Default** to reset the path in case of erroneous entry.

Enter the Config schema user ID. Also enter the Config schema db driver details and the connection URL. (DB driver and the connection urn can be taken from the Dynamic services.xml in the \$FIC_HOME/conf folder of the app layer.

Enter the TNS name for the atomic schema (Same as what you've given in Database Master while creating the Information Domain)



Figure 20: Pre Setup Information Screen – Database Details I

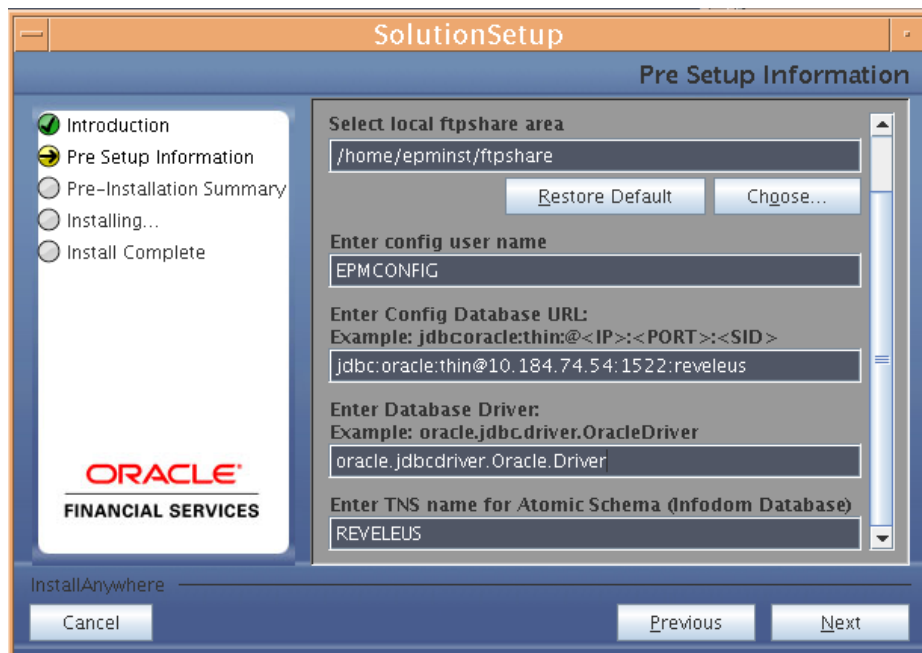


Figure 21: Pre Setup Information Screen – Database Details II

Step 7

The **Pre Setup Information** screen requests for the Oracle Financial Services Analytical Applications Infrastructure user ID.

Enter the Oracle Financial Services Analytical Applications Infrastructure user ID that has been mapped to the Information Domains provided earlier.

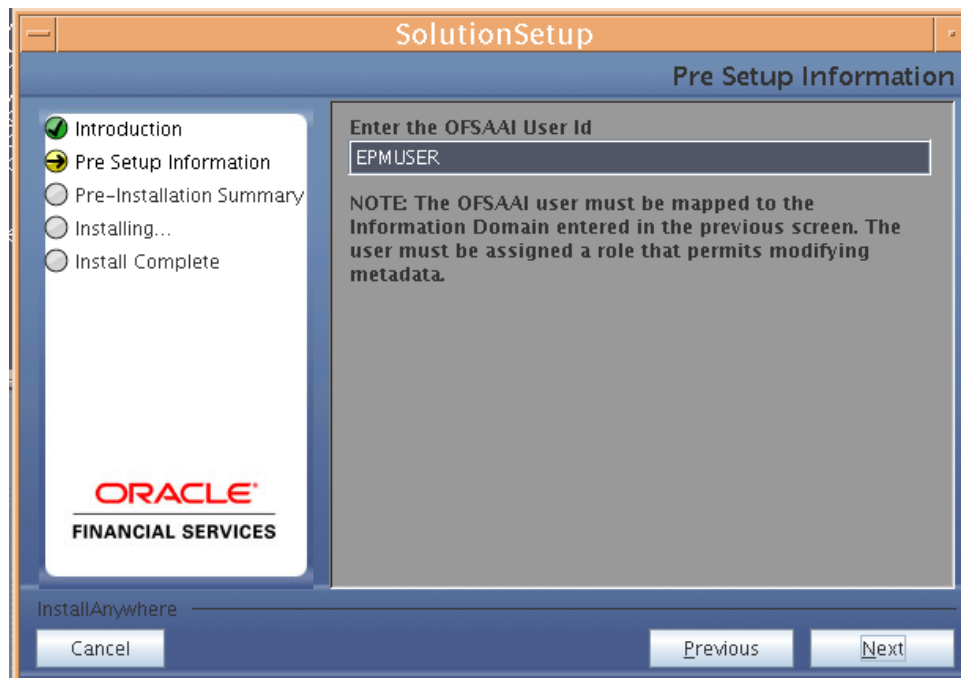


Figure 22: Pre Setup Information screen - Oracle Financial Services Analytical Applications Infrastructure User Details

NOTE

The Oracle Financial Services Analytical Applications Infrastructure user must have a role that is able to perform Add/Modify functions for ALM metadata.

Click **Next** to continue.

Step 8

The Pre-Installation Summary screen outlines the general information about the set up

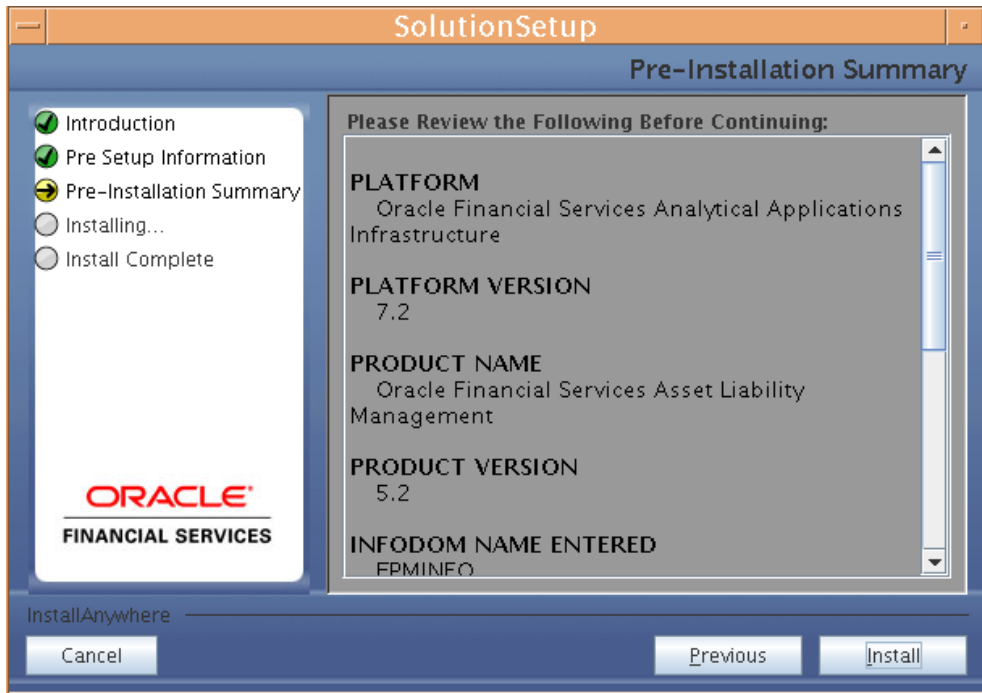


Figure 23: Pre Installation Summary – Oracle Financial Services Analytical Applications Infrastructure User Details

Pre Installation Summary screen will display the OFSAAI Version, Information Domain name, Segment name etc. If you want to edit the input values like Information Domain name, Segment name you can do the same by clicking Back Otherwise

Click **Install** to continue.

Step 10

The following screen displays the progress of the installation. Upon completion of the process, the installation status is published on the screen. You must access the file SolutionLOG.log in the path \$FIC_HOME to check for errors if any.

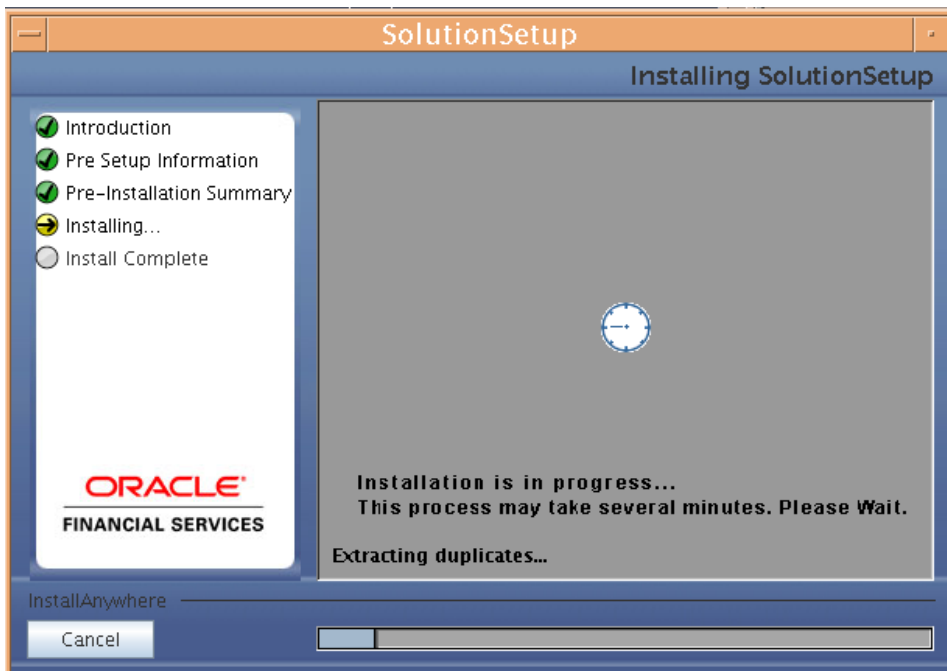


Figure 25: Installation in Progress

NOTE

\$FIC_HOME is the environment variable set during the Oracle Financial Services Analytical Applications Infrastructure installation, it refers to the Oracle Financial Services Analytical Applications Infrastructure Installation directory.

Step 11

The following screen displays the successful installation of the Oracle Financial Services Asset Liability Management Product Setup.

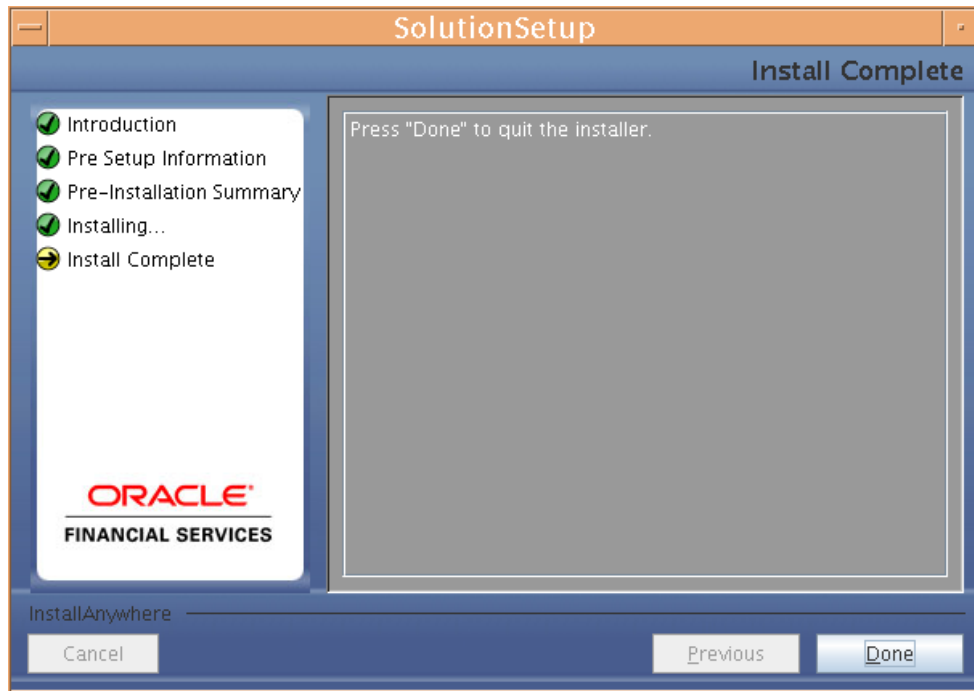


Figure 26: Installation Complete

Click **Done** to quit the installer.

Machine C – Product Web Layer

Step 1

Copy the Setup.bin and Setup.sh to a folder on the machine that hosts the Oracle Financial Services Analytical Applications Infrastructure application. To begin Oracle Financial Services Asset Liability Management Product installation, execute Setup.sh.

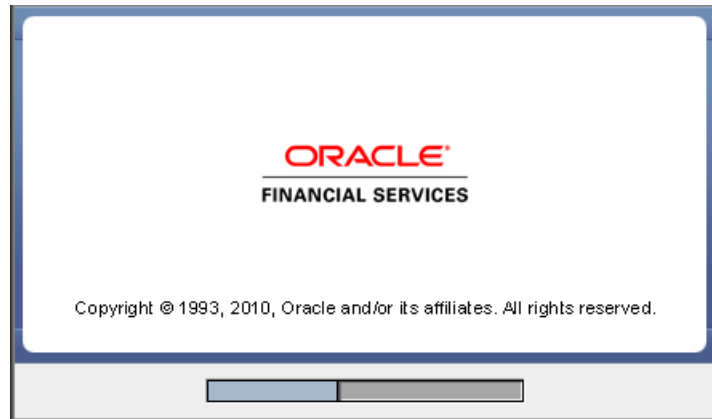


Figure 27: Installation Splash Screen

Step 2

Upon invoking the installer, the **Introduction** screen will display the pre-requisites for installation. Ensure that the pre-requisites are satisfied before you proceed.

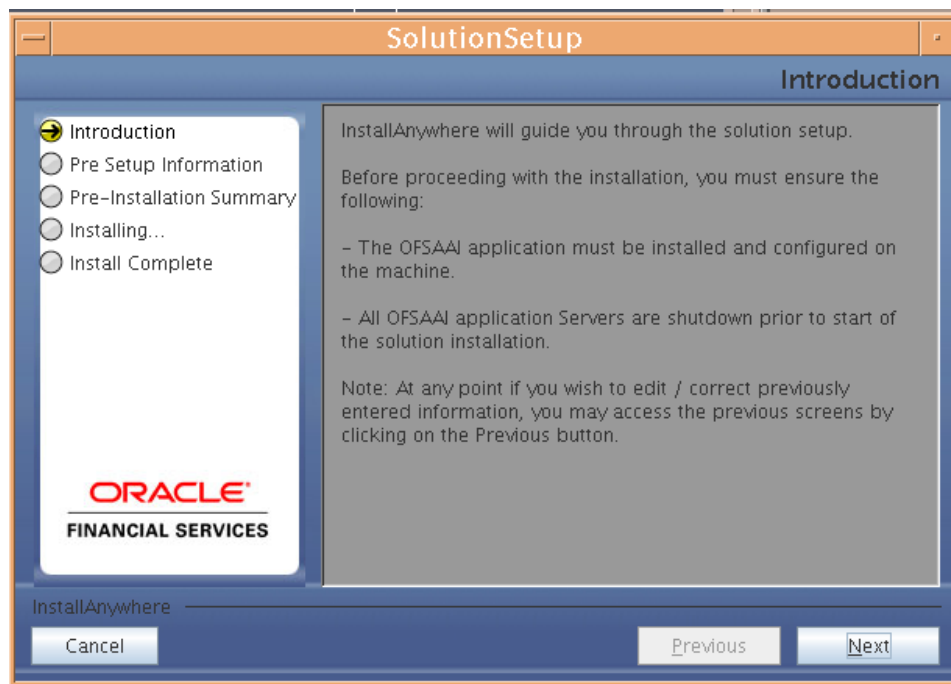


Figure 28: Introduction Screen

Click **Next** to continue.

NOTE

At any point during the installation process, if you Click **Cancel**, the installation process will be aborted and you will exit this setup.

- At any point during the installation process, if you Click **Previous**, you will return to the previous screen.

Step 3

Please choose the log mode for this installer. In case if the Debug is selected, the Passwords will be printed in the Log File (\$FIC_HOME\SolutionsLog.log).

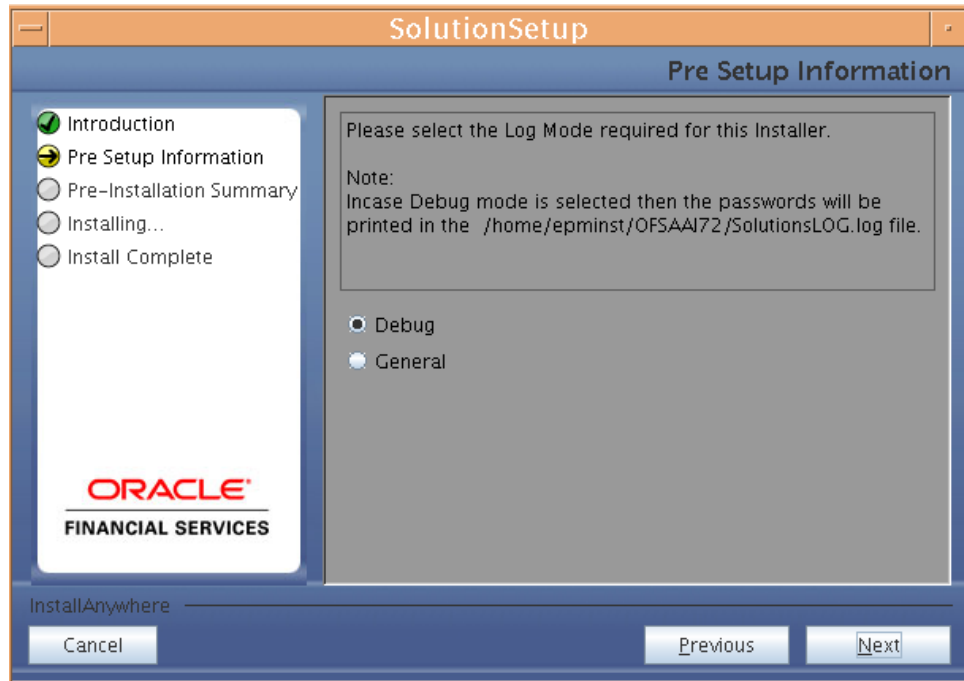


Figure 29: Log Mode Option Screen

NOTE

- SolutionLOG.log name format will be renamed to ALM_<INFORMATION DOMAIN_NAME>_ SolutionLOG_<DATE>_<TIME>.log after complete installation.

Step 4

Please provide the 9 digit Customer Identification number provided during the OFSAAI installation.

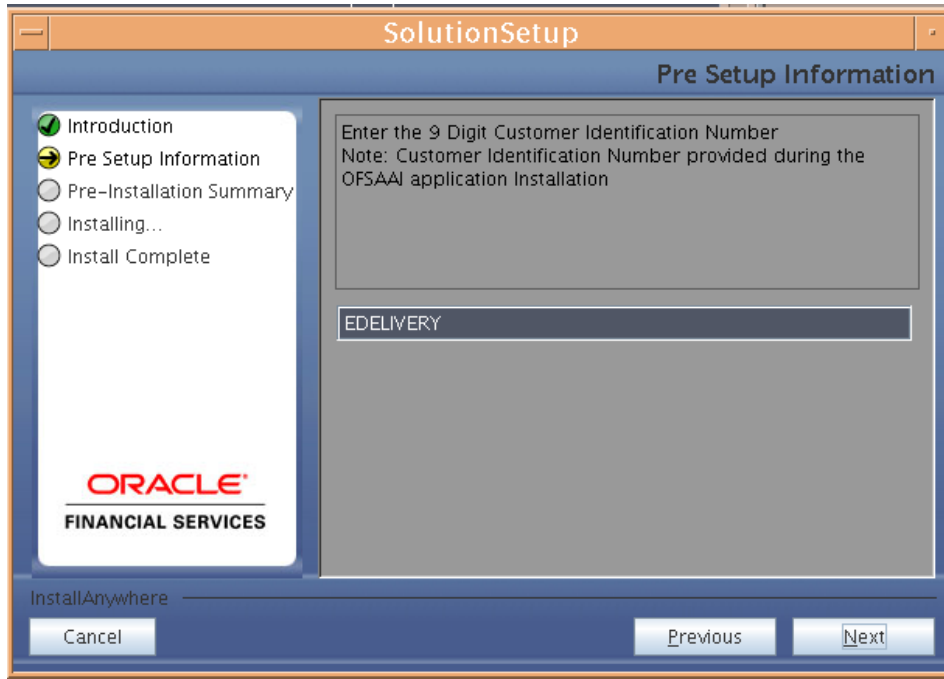


Figure 30: Customer ID Input Screen

Step 5

The **Pre Setup Information** screen requests for setup information.

Select the appropriate Oracle Financial Services Analytical Applications Infrastructure layer that has been installed on the machine.

Example Web Layer

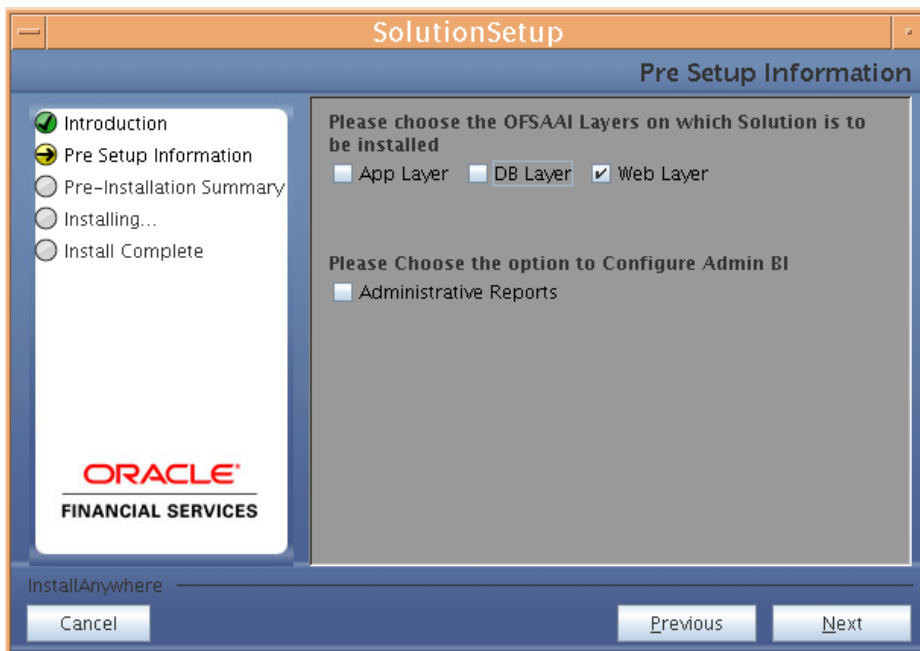


Figure 31: Pre Setup Information Screen – Choose Layer to Install

Along with appropriate Oracle Financial Services Analytical Applications Infrastructure layer choose Administrative Reports to configure the Administrative Reports application

NOTE

- For a single-tier Oracle Financial Services Analytical Applications Infrastructure 7.2 installation, you must select App Layer, Web Layer and DB Layer. For a multi-tier Oracle Financial Services Analytical Applications Infrastructure 7.2 installation, select the corresponding layer installed on the machine.
- In case Admin BI is already configured through the previous product installation, the subsequent product installation without Admin BI option may alter the existing Admin BI configuration settings.

Step 6

Enter the Information Domain in which the Oracle Financial Services Asset Liability Management data model has been successfully uploaded.

Enter the valid path that has been configured as the ALM Share Path in Oracle Financial Services Analytical Applications Infrastructure 7.2. You may click **Choose** to select the path. Click **Restore Default** to reset the path in case of erroneous entry. Enter the config schema user ID and the password.

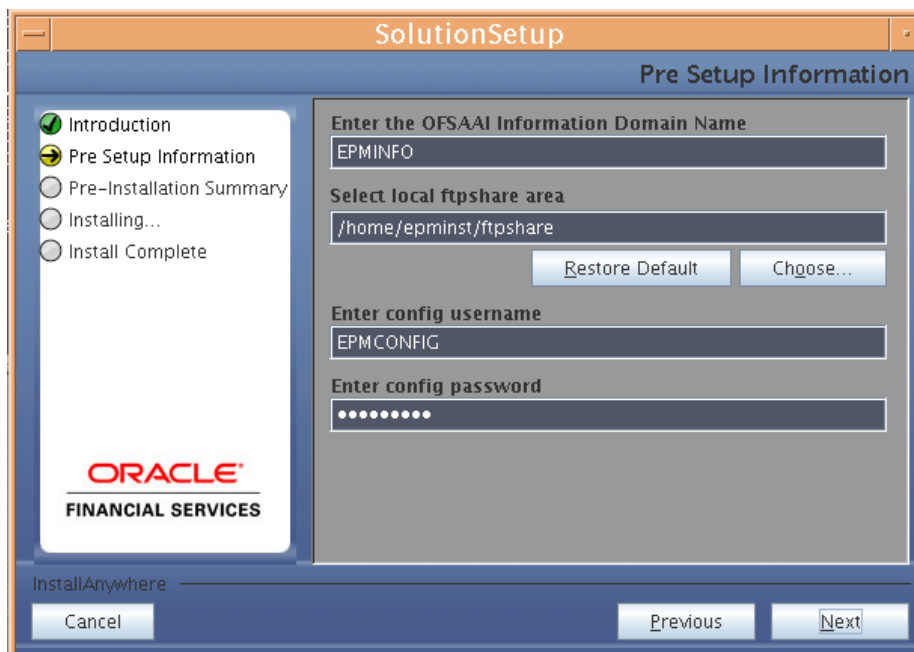


Figure 32: Pre Setup Information Screen – Information Domain Details

Click **Next** to continue.

Step 7

The Pre Setup Information screen requests for the Oracle Business Intelligence installed host machine IP, port number and context name.



Figure 33:

Step 7

The Pre Setup Information screen requests for the Oracle Financial Services Analytical Applications Infrastructure user ID.

Enter the Oracle Financial Services Analytical Applications Infrastructure user ID that has been mapped to the Information Domain provided earlier. Enter the TNS name for the atomic schema (Same as what you give in Database Master while you create the Information Domain)

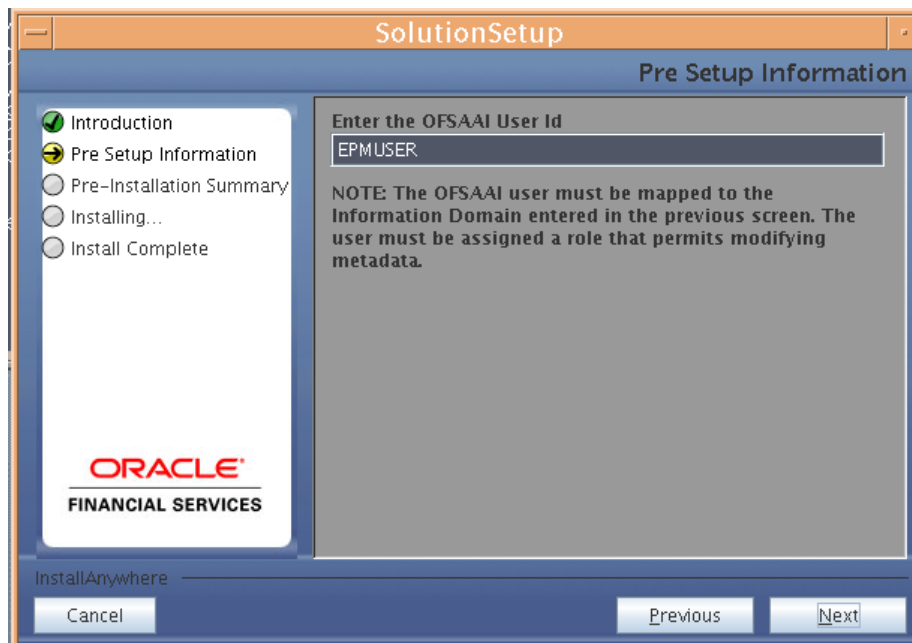


Figure 34: Pre Setup Information screen – Oracle Financial Services Analytical Applications Infrastructure User Details

NOTE

- The Oracle Financial Services Analytical Applications Infrastructure user must have a role that is able to perform Add/Modify functions for ALM metadata

Step 8

The Pre-Installation Summary screen outlines the general information about the set up

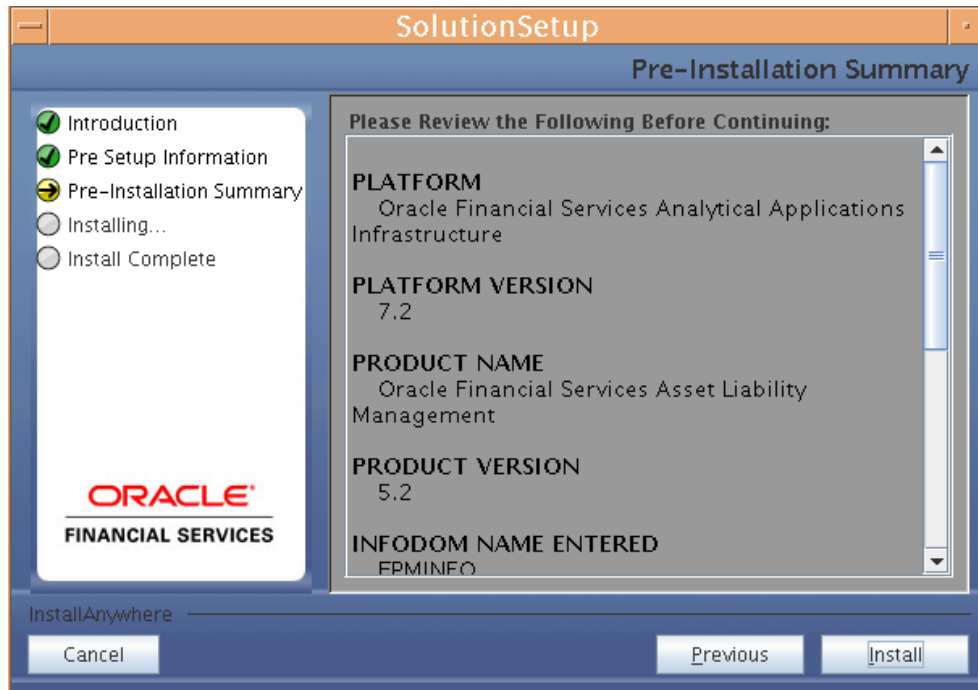


Figure 35: Pre Installation Summary – Oracle Financial Services Analytical Applications Infrastructure User Details

Pre Installation Summary screen will display the OFSAAI Version, Information Domain name, Segment name etc. If you want to edit the input values like Information Domain name, Segment name you can do the same by clicking Back Otherwise

Click **Install** to start installation.

Step 9

The following screen displays the progress of the installation. Upon completion of the process, the installation status is published on the screen. You must access the file SolutionLOG.log in the path \$FIC_HOME to check for errors if any.

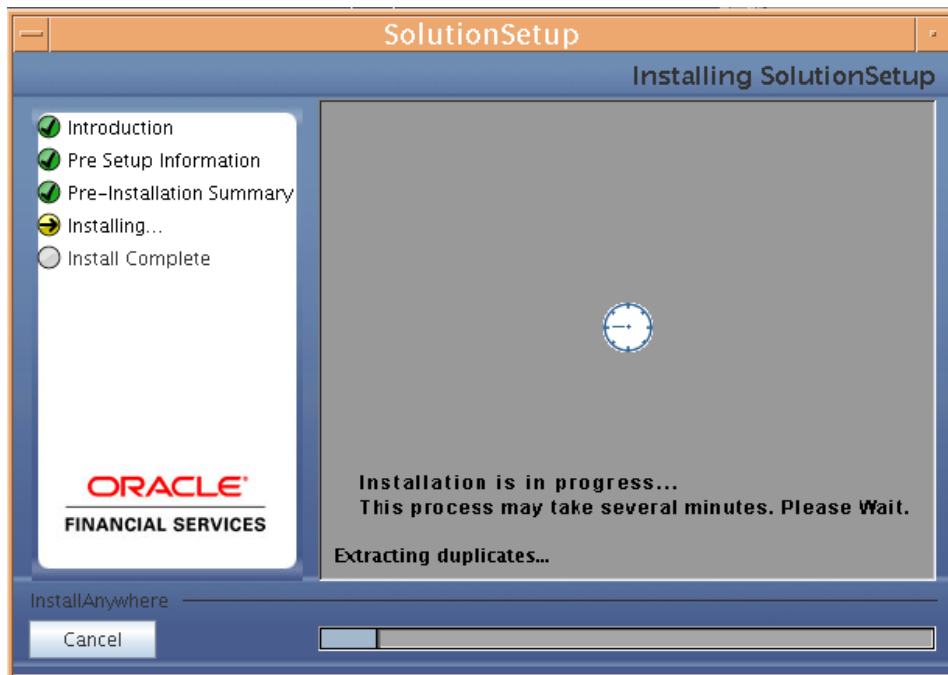


Figure 37: Installation in Progress

NOTE

\$FIC_HOME is the environment variable set during the Oracle Financial Services Analytical Applications Infrastructure Installation, it refers to the Oracle Financial Services Analytical Applications Infrastructure Installation directory.

Step 10

The following screen displays the successful installation of the Oracle Financial Services Asset Liability Management Product Setup.

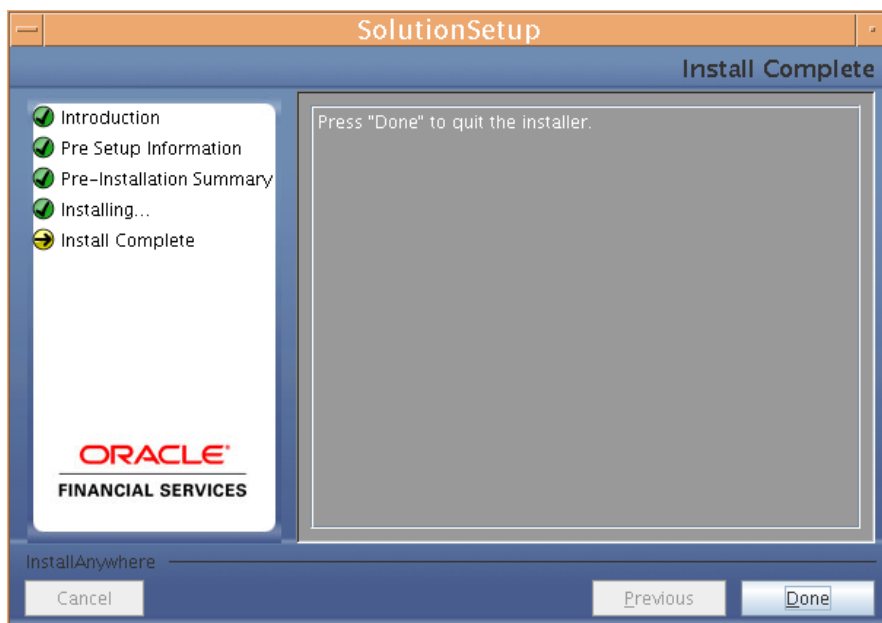


Figure 38: Installation Complete

Click **Done** to quit the installer.

Silent Installation

Silent installation is achieved via a properties file [Silent.props] that must be updated with proper values, before attempting to install using the silent mode.

The following table lists all the properties that need to be specified

Property Name	Description of Property	Permissible values	Comments
LOG_MODE	Mode for logging	0 = Debug 1= General	Optional; Default : 0
INFODOM_NAME	Information domain in to which the application will be installed		MANDATORY
OFSAAI_USER_ID	A valid OFSAAI user-id		MANDATORY
FTP_SHARE_PATH	Absolute FTP Share path		MANDATORY
CUSTOMER_ID	Customer id specified while installing OFSAAI		MANDATORY
TNS_NAME	The TNS Entry used to access the configuration/application schema of the OFSAAI installation		MANDATORY
INSTALL_WEB	Install web-tier components	0 = No 1 = Yes	Default : 0
INSTALL_DB	Install database-tier components	0 = No 1 = Yes	Default : 0
INSTALL_APP	Install Application-tier components be installed	0 = No 1 = Yes	Default : 0
INSTALL_ADMIN_BI	Install admin-BI components	0 = No 1 = Yes	Default : 0 Applicable only if INSTALL_WEB=1 OR INSTALL_DB=1
RAC_JDBC_URL	The JDBC URL to be used in case of a RAC setup		Applicable if INSTALL_DB=1 AND INSTALL_WEB=0 AND INSTALL_APP=0

ORA_HOST	Host Name of the database server on which the Configuration Schema is present		Applicable if INSTALL_DB = 1; Ignored if RAC_JDBC_URL has a value specified
ORA_PORT	Port number of the TNS Listener for the above database Host		Applicable if INSTALL_DB = 1; Ignored if RAC_JDBC_URL has a value specified
ORA_SID	SID of the above database		Applicable if INSTALL_DB = 1; Ignored if RAC_JDBC_URL has a value specified
CONFIG_USER	User-id of the OFSAAI configuration schema		Applicable if INSTALL_WEB = 1 AND INSTALL_DB=0 AND INSTALL_APP=0
CONFIG_PASSWD	Password of the OFSAAI configuration schema		Applicable if INSTALL_WEB = 1 AND INSTALL_DB=0 AND INSTALL_APP=0
OBI_HOST	Host Name of the OBIEE Server		Applicable if INSTALL_ADMIN_BI=1
OBI_PORT	Port Number of the OBIEE Server		Applicable if INSTALL_ADMIN_BI=1
OBI_CONTEXT	Context Name of the OBIEE Server		Applicable if INSTALL_ADMIN_BI=1
ETL_APPLICATION	The ETL application name		
ETL_SOURCE_STAGING	The ETL Source into which the Table-2-Table ETL definitions on staging tables will be deployed		This Source must be mapped to the above ETL Application
ETL_SOURCE_PROCESSING	The ETL Source into which the Table-2-Table ETL definitions on processing tables will be deployed		This Source must be mapped to the above ETL Application

How to install in Silent Mode

- The installer folder contains a template file “Silent.template”
- Create a copy of this file and rename the copy as “Silent.props”
- Edit the file “Silent.props” and specify the parameters as per the requirements
- On the UNIX Command prompt, execute the following command
 - o “Setup.sh SILENT”
- Refer to the console log [or the file preinstall.log] for any error messages.

Post Installation Activities

Oracle Financial Services Analytical Applications Infrastructure Server Memory Configuration

The Oracle Financial Services Analytical Applications Infrastructure Application Server is started using `reveleusstartup.sh`. This file can be edited for setting customized memory settings, garbage collector settings depending on the available hardware configuration. Please raise an SR in support.oracle.com if you have any queries related to EPM applications.

Once the installation of Oracle Financial Services Asset Liability Management Product is completed, you must perform the following steps.

- Check the Log files `SolutionsLOG.log`, `SolutionSetup_InstallLog.log` under `$FIC_HOME`.

NOTE

- `SolutionLOG.log` name format will be renamed to `ALM_<INFORMATION DOMAIN_NAME>_SolutionLOG_<DATE>_<TIME>.log` after complete installation.
- Please ignore the Unique key/ primary key violated constraints.
- In case of upgrade, ignore the following errors in the log file:
- Error:ORA-02260: table can have only one primary key.
- Error:ORA-00955: name is already used by an existing object.
- Error:ORA-00001: unique constraint (<<UNIQUE KEY NAME>>) violated.
- Error:ORA-02275: such a referential constraint already exists in the table.
- Error:ORA-01430: column being added already exists in table.
- For Admin BI configuration follow the steps mentioned in `Readme_AdminBI_PostInstall_Steps.txt` under `$FIC_HOME/adminbi`

NOTE

- In case of Multitier Installation `Readme_AdminBI_PostInstall_Steps.txt` will be available under `$FIC_HOME/adminbi` folder of Web Layer installation.
- Deploy the EAR or WAR file
- If the Web-Server is Tomcat then re-create and re-deploy the WAR file (Oracle Reveleus.war file). (Refer to: *Tomcat WAR Files Creation and Tomcat WAR Files Deployment* of the Oracle Financial Services Analytical Applications Infrastructure 7.2 Installation Manual). Ensure that the previously deployed applications in Tomcat are removed before starting the re-deployment. Start all OFSAAI servers. All servers should be directly started in the server.
- If the Web-Server is Websphere re-create and re-deploy the WAR file (Oracle Reveleus.war file). (Refer to: *Websphere WAR Files Creation and Websphere WAR Files Deployment* of the Oracle Financial Services Analytical Applications Infrastructure 7.2 Installation Manual). Ensure that the previously deployed applications in Websphere are removed before starting the re-deployment. Start all OFSAAI servers. All servers should be directly started in the server.

- If the Web-Server is Weblogic re-create and re-deploy the WAR file (Oracle Reveleus.war file). (Refer to: *Weblogic WAR Files Creation and Weblogic WAR Files Deployment* of the Oracle Financial Services Analytical Applications Infrastructure 7.2 Installation Manual). Ensure that the previously deployed applications in Weblogic are removed before starting the re-deployment. Start all OFSAAI servers. All servers should be directly started in the server.
- Start all Oracle Financial Services Analytical Applications Infrastructure v7.2 Servers.

NOTE

- If you need assistance in starting the servers, then refer to *Starting Oracle Reveleus Servers* in the Installation Guide Oracle Financial Services Analytical Applications Infrastructure 7.2. .profile should be executed before starting any activity from the console.
- Recompile any invalid Functions, procedures and views.
- Re-compile the stored procedure "fsi_irc_hybrid_merge_linear" on the atomic schema, using the code-snippet, provided in the addendum section
- Map the Oracle Financial Services Analytical Applications Infrastructure user with ALM admin privilege, Authorize the User and Map the user to ALM application groups.
- Map the user group to the Information Domain
- Login as the new user and define global and application preference settings.
- Batch name "INSTRUMENT_TABLE_VALIDATION" needs to be executed [for any mis-date]. This step will ensure the object-registrations are validated and objects are made available to the individual applications.
- The Oracle Financial Services Asset Liability Management Product is now ready to be used.

Addendum

- Procedure: “FSI_IRC_HYBRID_MERGE_LINEAR”: Open this document using a text editor, and execute the contents on the atomic schema.



FSI_IRC_HYBRID_M
ERGE_LINEAR.txt



Installation Manual

October 2010

Oracle Financial Services Asset Liability Management v5.2 Product

Oracle Corporation

World Headquarters

500 Oracle Parkway

Redwood Shores, CA 94065

U.S.A.

Worldwide Inquiries:

Phone: +1.650.506.7000

Fax: +1.650.506.7200

www.oracle.com/financial_services/

Copyright © 2010 Oracle Financial Services Software Limited. All rights reserved.

No part of this work may be reproduced, stored in a retrieval system, adopted or transmitted in any form or by any means, electronic, mechanical, photographic, graphic, optic recording or otherwise, translated in any language or computer language, without the prior written permission of Oracle Financial Services Software Limited.

Due care has been taken to make this Installation Manual and accompanying software package as accurate as possible. However, Oracle Financial Services Software Limited makes no representation or warranties with respect to the contents hereof and shall not be responsible for any loss or damage caused to the user by the direct or indirect use of this Installation Manual and the accompanying Software System. Furthermore, Oracle Financial Services Software Limited reserves the right to alter, modify or otherwise change in any manner the content hereof, without obligation of Oracle Financial Services Software Limited to notify any person of such revision or changes.

All company and product names are trademarks of the respective companies with which they are associated.