

StorageTek Virtual Operator Panel

User's Guide
(Customer Version)



Part Number: 96179
July 2010
Revision JC

Submit comments about this document by clicking the Feedback [+] link at: <http://docs.sun.com>

StorageTek Virtual Operator Panel User's Guide (Customer Version) Revision JC

Part Number: 96179

Copyright © 2006, 2010, Oracle and/or its affiliates. All rights reserved.

This software and related documentation are provided under a license agreement containing restrictions on use and disclosure and are protected by intellectual property laws. Except as expressly permitted in your license agreement or allowed by law, you may not use, copy, reproduce, translate, broadcast, modify, license, transmit, distribute, exhibit, perform, publish, or display any part, in any form, or by any means. Reverse engineering, disassembly, or decompilation of this software, unless required by law for interoperability, is prohibited.

The information contained herein is subject to change without notice and is not warranted to be error-free. If you find any errors, please report them to us in writing.

If this is software or related software documentation that is delivered to the U.S. Government or anyone licensing it on behalf of the U.S. Government, the following notice is applicable:

U.S. GOVERNMENT RIGHTS Programs, software, databases, and related documentation and technical data delivered to U.S. Government customers are "commercial computer software" or "commercial technical data" pursuant to the applicable Federal Acquisition Regulation and agency-specific supplemental regulations. As such, the use, duplication, disclosure, modification, and adaptation shall be subject to the restrictions and license terms set forth in the applicable Government contract, and, to the extent applicable by the terms of the Government contract, the additional rights set forth in FAR 52.227-19, Commercial Computer Software License (December 2007). Oracle USA, Inc., 500 Oracle Parkway, Redwood City, CA 94065.

This software or hardware is developed for general use in a variety of information management applications. It is not developed or intended for use in any inherently dangerous applications, including applications which may create a risk of personal injury. If you use this software or hardware in dangerous applications, then you shall be responsible to take all appropriate fail-safe, backup, redundancy, and other measures to ensure the safe use. Oracle Corporation and its affiliates disclaim any liability for any damages caused by use of this software or hardware in dangerous applications.

Oracle is a registered trademark of Oracle Corporation and/or its affiliates. Oracle and Java are registered trademarks of Oracle and/or its affiliates. Other names may be trademarks of their respective owners.

AMD, Opteron, the AMD logo, and the AMD Opteron logo are trademarks or registered trademarks of Advanced Micro Devices. Intel and Intel Xeon are trademarks or registered trademarks of Intel Corporation. All SPARC trademarks are used under license and are trademarks or registered trademarks of SPARC International, Inc. UNIX is a registered trademark licensed through X/Open Company, Ltd.

This software or hardware and documentation may provide access to or information on content, products, and services from third parties. Oracle Corporation and its affiliates are not responsible for and expressly disclaim all warranties of any kind with respect to third-party content, products, and services. Oracle Corporation and its affiliates will not be responsible for any loss, costs, or damages incurred due to your access to or use of third-party content, products, or services.

Revision History

EC	Date	Revision	Description
129914	February 2006	A	Initial Release
129918	March 2006	B	Refer to this revision for a description of the changes.
129936	April 2006	C	Refer to this revision for a description of the changes.
129967	May 2006	D	Refer to this revision for a description of the changes.
129994	June 2006	E	Refer to this revision for a description of the changes.
135001	July 2006	F	Refer to this revision for a description of the changes.
135033	September 2006	G	Refer to this revision for a description of the changes.
135063	October 2006	H	Refer to this revision for a description of the changes.
135080	September 2007	J	Refer to this revision for a description of the changes.
EC000471	June 2008	JA	Refer to this revision for a description of the changes.
EC001475	December 2009	JB	Incorporated VOP application changes relative to VOP version 1.0.14. Incorporated applicable content from each addendum to revision JA. Removed information for VOP versions prior to 1.0.12. Replaced many of the screen shots. Revised text and page construction to meet department requirements - many changes from Chapter 1 through Chapter 5.
EC001795	July 2010	JC	Updated title page with Oracle branding. Updated the document template. Incorporated VOP application changes relative to VOP version 1.0.16 (see TABLE P-1 on page 15 for specifics).

Contents

Revision History 3

Contents 5

Figures 9

Tables 11

Preface 13

Related Documentation 13

Documentation, Support, and Training 14

Oracle Welcomes Your Comments 14

What's New 15

1. Virtual Operator Panel Overview 17

Introduction 17

T-series VOP Application Window 18

LTOVOP Application Window 19

Prerequisites 20

 Computer Hardware Requirements 20

 Secure Configuration 21

 Operating System Requirement 21

 Java® Runtime Environment Requirement 22

2. Software Installation 23

 Install the Java Runtime Environment 23

VOP Application Software	26
▼ To Download a VOP Zip File	26
▼ To Extract VOP Files	28
VOP Installation	29
▼ To Perform an Installation for the Windows OS	29
▼ To Test Launch the ltoVOP Program, Windows	32
▼ To Determine the sunVOP/Java Version, Windows	34
VOP Post-Installation Options, Windows	36
▼ (Optional) To Delete Unneeded Windows Folders or Files	36

3. Starting VOP Programs 39

Overview 39

T-series VOP 39

- ▼ To Use the Windows Start Menu, Programs List 40
- ▼ To Use the Desktop Shortcut 41
- ▼ To Use Windows Explorer 41
- ▼ To Use the Run Dialog Box 42

VOP Application for LTO Tape Drives 43

- ▼ To Use Windows Explorer 44
- ▼ To Use the Windows Desktop Shortcut Icon 44
- ▼ To Use the Windows Run Dialog Box 44
- ▼ To Use the Windows Start Menu, Programs List 45

4. VOP Operation - T-series Tape Drives 47

Use sunVOP Menus and Controls 48

- ▼ To Use Menu Bar Selections 48

File Menu 49

- ▼ To Use the Clear Transcript Command 50
- ▼ To Use the Connect to Drive Command 50
- ▼ To Use the Collect Support Logs Command 51
- ▼ To Use the Exit Command 51

Drive Operations Menu 52

- ▼ To Use the Load Tape Command 53
- ▼ To Use the Unload Tape Command 53

- ▼ To Use the Set Offline/Online Command 53
- ▼ To Use the IPL Drive Command 54
- ▼ To Use the Force Dump Command 55
- Format Tape Command 56
- ▼ To Format a Tape Cartridge (*Offline*) 57
- Retrieve Menu 59
 - View Drive Data Command 60
 - ▼ To Use the View Drive Data Command 60
 - Encrypt Property Sheet 61
 - Fibre Property Sheet 63
 - Keyid Property Sheet 65
 - Manufacturing Property Sheet 66
 - Missing Property Sheet 67
 - Network Property Sheet 68
 - Rfid Property Sheet 69
 - Version Property Sheet 70
 - ▼ To Use the View Date & Time Command 71
 - ▼ To Use the ID File to File Command 71
 - ▼ To Use the Save Dumps to a File Command 71
 - ▼ To Use the Perms to File Command 73
 - ▼ To Use the Logs to File Command 74
- Configure Menu 75
 - Drive Data Command 76
 - ▼ To Use the Drive Data Command - Manual Entry 77
 - ▼ To Use the Drive Data Command - Config File 78
 - Encrypt Property Sheet 79
 - Fibre Channel Fibre Property Sheet 81
 - FICON Fibre Property 82
 - Attributes of Interface Ports 88
 - ▼ To Enable the Port World Wide Name Override 90
 - Network Property Sheet 90
 - ▼ To Set a Drive Static IPv4 Address 92
 - ▼ To Set the Network Node Name 93

- ▼ To Use the Save Drive Config Command 94
- ▼ To Use the Set Clock Command 95
- ▼ To Use the Firmware Update from Tape Command 96

Help Menu 98

- ▼ To Use the About Command 98
- ▼ To Use the Fault Symptom Code (FSC) Dictionary 99

5. VOP Operation - LTO 101

Use LtoVOP Controls 101

VOP to Drive Connection 102

- ▼ To Connect VOP to the Drive 103

Drive Online/Offline Status 103

- ▼ To Change Drive Status to Offline 103

Error Messages 105

Monitor Drive 106

Enroll Drive 107

Configure Drive 108

Service Drive 109

A. Changing the Computer IPv4 Address 113

Static IPv4 Address 113

- ▼ Setting static IP, Windows OS 113

Dynamic IP Address 116

- ▼ Resetting IP to Auto, Windows OS 116

B. VOP to Drives on Private Networks 117

Private Network, SDP-Controlled 117

Private Network, non-SDP 118

Overview 118

Components 119

- ▼ Setup 119

Glossary 121

Index 129

Figures

FIGURE 1-1	T-series VOP Application Window	17
FIGURE 1-2	LTO-4/LTO-5 VOP Application Window	19
FIGURE 1-3	Window Control Menu - LTOVOP	20
FIGURE 1-4	Drive Tray Ethernet Port	21
FIGURE 2-1	Oracle Home Page	23
FIGURE 3-1	VOP, Not Connected (Windows Version)	40
FIGURE 3-2	LTO-4/LTO-5 Virtual Operator Panel (Windows Version)	43
FIGURE 4-1	T10000 Tape Drive Rear Panel	47
FIGURE 4-2	VOP Window Menus and Indicators/Controls	48
FIGURE 4-3	File Menu Commands	49
FIGURE 4-4	Connect to Drive Dialog Box	50
FIGURE 4-5	Drive Operations Menu Commands	52
FIGURE 4-6	Tape Cartridge Write-Protect Switch	58
FIGURE 4-7	Retrieve Menu	59
FIGURE 4-8	View Current Drive Settings, Encrypt Tab - T10000 Drive	61
FIGURE 4-9	View Current Drive Settings, Encrypt Tab - T9840D Drive	62
FIGURE 4-10	View Current Drive Settings, Fibre Tab (FCP Interface)	63
FIGURE 4-11	View Current Drive Settings, Fibre Tab (FICON Interface)	64
FIGURE 4-12	View Current Drive Settings, Keyid	65
FIGURE 4-13	View Current Drive Settings, Manufacturing Tab	66
FIGURE 4-14	View Current Drive Settings, Missing	67
FIGURE 4-15	View Current Drive Settings, Network Tab	68
FIGURE 4-16	View Current Drive Settings, RFID Tab	69
FIGURE 4-17	View Current Drive Settings, Version Tab	70
FIGURE 4-18	Configure Menu	75

FIGURE 4-19	Configure Drive Parameters, Encrypt Tab T10000 Tape Drive	79
FIGURE 4-20	Configure Drive Parameters, Encrypt Tab T9840D Tape Drive	80
FIGURE 4-21	Configure Drive Parameters, Fibre Tab (FCP)	81
FIGURE 4-22	Configure Drive Parameters, Fibre Tab (FICON)	82
FIGURE 4-23	Configure Drive Parameters, T9840D	83
FIGURE 4-24	T10000A Emulation Options - FCP	84
FIGURE 4-25	T10000A Emulation Options - FICON	84
FIGURE 4-26	World Wide Name Text Field	88
FIGURE 4-27	Interface Port Attributes	89
FIGURE 4-28	Port World Wide Name Text Fields	90
FIGURE 4-29	Configure Drive Parameters, Network Tab	91
FIGURE 4-30	Node Name	93
FIGURE 4-31	About Dialog Box	98
FIGURE 5-1	ItoVOP Graphical User Interface	101
FIGURE 5-2	Set Online Button	104
FIGURE 5-3	Error Message	105
FIGURE 5-4	Monitor Drive	106
FIGURE 5-5	Enroll Drive	107
FIGURE 5-6	Configure Drive	109
FIGURE 5-7	Service Drive	110
FIGURE 5-8	About LTO Virtual Operator Panel	111
FIGURE A-1	Network Connections Selection	113
FIGURE A-2	Network Connections Window	114
FIGURE A-3	Local Area Connection Dialog Box	114
FIGURE A-4	Internet Protocol (TCP/IP) Properties Dialog Box	115
FIGURE A-5	Internet Protocol (TCP/IP) Properties (auto IP) Dialog Box	116
FIGURE B-1	Private Network, non-SDP	118

Tables

TABLE P-1	VOP Change Summary	15
TABLE 1-1	Drive Status Indicators	18
TABLE 4-1	File Menu Commands	49
TABLE 4-2	Drive Operations Menu Commands	52
TABLE 4-3	Format Tape Utilities	56
TABLE 4-4	Retrieve Menu Commands	59
TABLE 4-5	Configure Menu Commands	75
TABLE 4-6	Configure Drive Parameter Buttons	77
TABLE 4-7	Data Compression Option Descriptions	85
TABLE 4-8	Data Security Erase Option Descriptions	85
TABLE 4-9	Standard Label Protect Options	86

Preface

This publication is for customers who are installing and using Oracle's StorageTek Virtual Operator Panel (VOP) with an encryption-capable LTO tape drive or a T-series tape drive that is not monitored by a Service Delivery Platform (SDP).

Note – When an SDP is installed on site and monitoring installed T-series drives with an Ethernet private network, the drive Ethernet port is 100% dedicated to the SDP. Therefore, the drive Ethernet port is unavailable for the customer connection that is required for VOP to interface with the drive.

Related Documentation

The following list contains the names and part numbers of publications that provide additional information that might be needed to use the VOP successfully.

Document Title	Part Number
Hardware Product Publications	
<i>T10000 Tape Drive Operator's Guide</i>	96174
<i>T10000A Encrypting Tape Drive Security Policy</i>	316055001
<i>T10000B Encrypting Tape Drive Security Policy</i>	316055101
<i>T9x40 Tape Drive User's Reference Manual</i>	95739
Software Product Publications	
<i>Crypto Key Management Station Configuration and Startup Guide</i>	96261
<i>Crypto Key Management Station User's Guide</i>	96262
<i>StorageTek Crypto Key Management System Administration Guide</i>	316195103
<i>StorageTek Crypto Key Management System Installation and Service Manual</i>	316194905
<i>StorageTek Crypto Key Management System Systems Assurance Guide</i>	316194805

The documentation is available online at:

<http://docs.sun.com/app/docs/prod/tape.drive#hic>

Documentation, Support, and Training

Function	URL
Web Site	■ http://www.oracle.com/index.html
Documentation	■ Customer: ■ http://docs.sun.com ■ Employee: ■ http://docs.sfbay.sun.com/ ■ Partner: ■ https://spe.sun.com/spx/control/Login
Downloads	■ Customer: ■ http://www.sun.com/download/index.jsp ■ Employee: ■ https://dlrequest-zn-dlapps1.sfbay.sun.com/usr/login
Support	■ http://www.sun.com/support/
Training	■ http://www.oracle.com/global/us/education/sun_select_country.html
Online Account	■ https://reg.sun.com/register

Oracle Welcomes Your Comments

Oracle is interested in improving its documentation and welcomes your comments and suggestions. Submit your comments by clicking the Feedback[+] link at:

<http://docs.sun.com>

Please include the title and part number of your document with your feedback:

VOP Customer User's Guide, 96179

What's New

The changes to the VOP application since the previous edition of this guide are detailed below:

TABLE P-1 VOP Change Summary

Version Number	Description of Changes
1.0.13	<ul style="list-style-type: none">■ T10000A/B and T9840D drives:<ul style="list-style-type: none">■ Changed Make Tape behavior to continue making tapes until the user explicitly cancels the operation■ Fixed <i>enroll</i> bugs■ IPv6 support■ T9840D - fixed View Event Log bug
1.0.14	<ul style="list-style-type: none">■ HP encrypting LTO-4 support of the Release 2 specification<ul style="list-style-type: none">■ IPv6 support■ Added Enroll tab■ Renamed Diagnose tab to Service tab■ IBM encrypting LTO-4 support of the Release 2 specification■ Get Logs for Support menu item
1.0.15	<ul style="list-style-type: none">■ Added new initializing states for encrypting IBM LTO-4■ DPKM support
1.0.16	<ul style="list-style-type: none">■ Oracle rebranding■ HP encrypting LTO-5 support■ Capability to save the ID file■ Delete all files in the FTP Temp directory on startup■ Added Collect Support Logs shortcut (the S character)

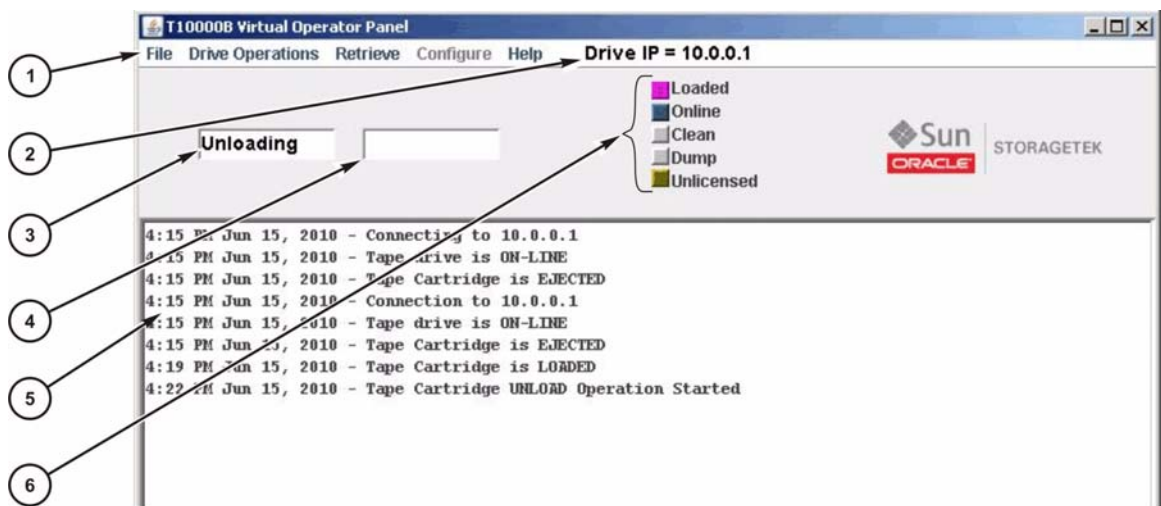
Virtual Operator Panel Overview

Introduction

The Virtual Operator Panel (VOP) facilitates user communication with a T10000 tape drive, a T9840D tape drive, or supported Linear Tape Open (LTO) Ultrium tape drives. The VOP provides an intuitive and user-friendly Graphical User Interface (GUI) to display drive-related information, to configure the drive, or to perform various drive operations and functions. There are two versions of the application: VOP (supports T10000A, T10000B, and T9840D tape drives) and LTOVOP (supports generation 4 and 5 drives).

FIGURE 1-1 depicts the T-series VOP (Windows OS) after connection to a drive.

FIGURE 1-1 T-series VOP Application Window



T103_428

- | | |
|---------------------------------|-----------------------------------|
| 1. Menu bar | 4. Secondary drive message window |
| 2. Drive IP/name | 5. VOP message pane |
| 3. Primary drive message window | 6. Drive status indicators |

Note – VOP on the Linux or UNIX OS is similar but with a Linux/UNIX look and feel.

T-series VOP Application Window

The application window in [FIGURE 1-1](#) contains the following sections:

- The menu bar contains the names of the online and offline menus. The File and Help menus are the only available menus before you complete a drive connection. The Drive Operations, Retrieve, and Configure menus have sub-menus and commands that are available after VOP connects to a drive. Note that you must place the drive offline to access the Configure menu.
- The drive name area displays the drive name or IP address (10.0.0.1 in this example).
- The primary and secondary drive message windows show drive status, host-generated messages, error messages, and so on.
- The VOP text message pane displays the VOP transcript.
- The drive status indicators show drive conditions (see [TABLE 1-1](#)).

TABLE 1-1 Drive Status Indicators

Indicator	Color	Meaning
All	Black	Indicates no connection to a tape drive.
Loaded Unload	Blue	Indicates that a cartridge is loaded in the drive.
	Grey	Indicates that a cartridge is present in the loading slot, but NOT loaded in the drive.
	Magenta	Indicates cartridge loading/unloading is in transition.
Empty	Grey	Indicates that a cartridge is NOT present in the loading slot.
Online Offline	Blue	Indicates that the drive is online (label reads Online).
	Grey	Indicates that the drive is offline (label reads Offline).
	Magenta	Indicates online/offline is in transition.
Clean	Orange	Indicates that the drive needs to be cleaned.
Dump	Orange	Indicates that there is a dump present for retrieval.
Encryption ¹	Red	Indicates that the drive is encryption-enabled and has all keys (label is Enabled).
	Orange	Indicates the drive is either missing an encryption key (label indicates Media for KMS 2.0) or has not been enrolled (label indicates Unlicensed for KMS 2.0).

1. The encryption status indicator is present only with an encryption-capable drive.

Note – See [Chapter 4, “VOP Operation - T-series Tape Drives”](#) for additional information.

LTOVOP Application Window

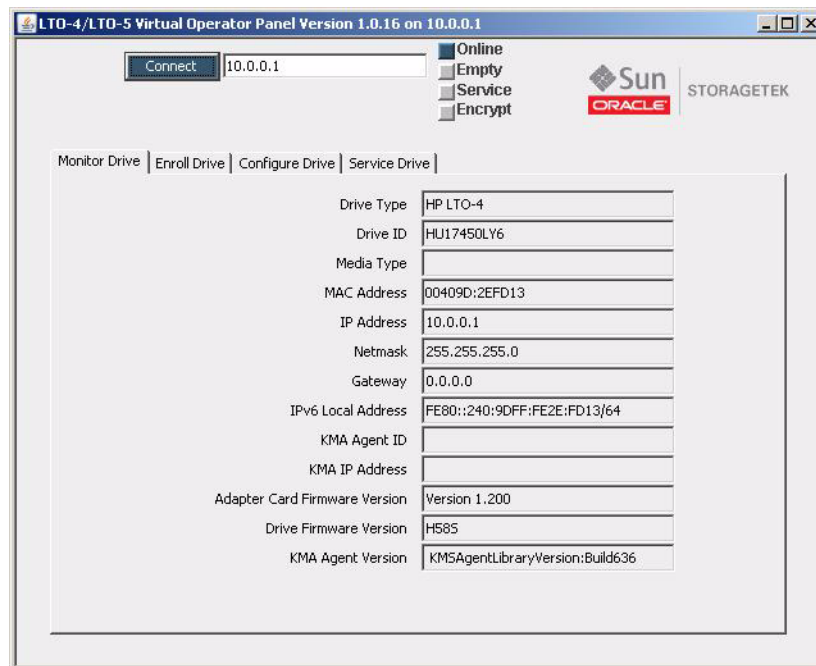
The LTOVOP (Windows OS) is shown in [FIGURE 1-2](#) after connection to a drive. The main parts of the window are:

- Title bar
- Connect button
- Four drive status indicators: Online, Empty, Service, and Encrypt

Note – The Online and Empty indicators are in a different order than those of the T-series VOP.

- Four property sheets (tabs): Monitor Drive, Enroll Drive, Configure Drive, and Service Drive.

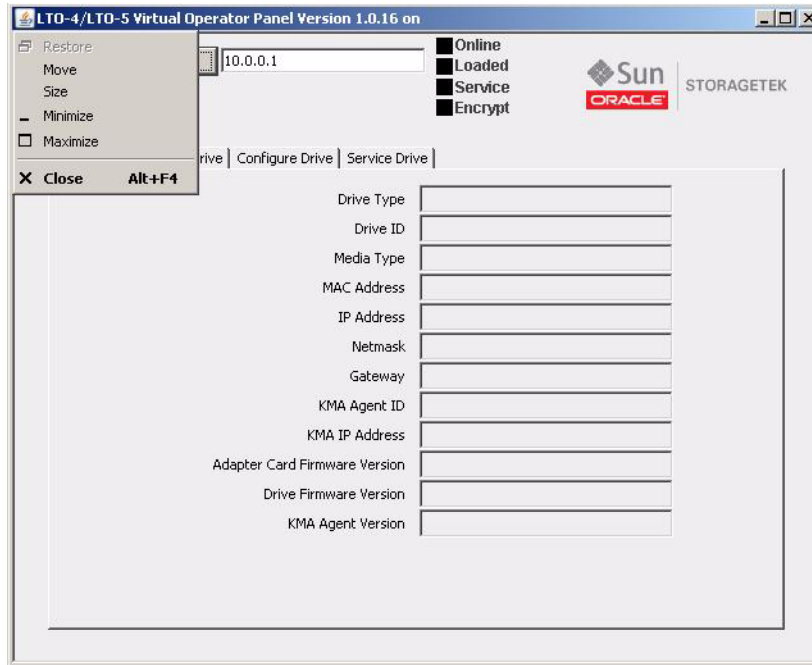
FIGURE 1-2 LTO-4/LTO-5 VOP Application Window



Note – LTOVOP on the Linux or UNIX OS is similar but with a Linux/UNIX look and feel.

Whereas VOP for the T-series drives has several menus, the only true menu in the LTOVOP appears when you click on the logo in the upper left corner of the title bar (see the figure below). Use the property sheets in the main body of the window to complete various enrollment, configuration, and drive service tasks or to monitor the drive (see [Chapter 5, “VOP Operation - LTO”](#)).

FIGURE 1-3 Window Control Menu - LTOVOP



Prerequisites

Before you can install and operate the VOP application, your system must meet certain prerequisites.

Computer Hardware Requirements

- 512 MB memory
- 1.0 GHz processor
- Monitor screen resolution 1024 x 768 (minimum)
- Ethernet port available for static IP addressing
- RJ45-RJ45 Ethernet cross-over cable (direct connection to a drive or drive tray)
- RJ45-RJ45 Ethernet cables (connection through an Ethernet switch)

Note – See [Appendix B](#) for guidelines regarding an indirect Ethernet connection.

The picture below shows an LTO drive tray for the SL3000 modular library system. Notice the Ethernet port in the lower left corner of the LTO encryption-capable drive tray. Above the Ethernet port is the STATUS indicator and an IP RESET switch. The T9840D and T10000 tape drives have similar items but they might be located differently on the drive tray.

FIGURE 1-4 Drive Tray Ethernet Port



Your computer must be configured with a static IP address that is compatible with the target drive.

Note – See [Appendix A, “Changing the Computer IPv4 Address”](#) for guidelines.

When you have Ethernet connection to a drive and a compatible static IP on your computer, you are ready to operate VOP.

Secure Configuration

The VOP is designed to operate on a service network configured as a private LAN. VOP, tape drives, the Crypto Key Management Station (if drives are encrypted), and Ethernet switches are potential components of the private LAN. The private LAN best practice recommendation ensures security from unauthorized access. See the *StorageTek Crypto Key Management System, Systems Assurance Guide* for details regarding the service network.

Operating System Requirement

The VOP works on the following operating system levels:

- Linux–Redhat 9.0, ES
- Solaris–SunOS 5.8, SunOS 5.9, and SunOS 5.10
- Windows 2000 or XP

Note – It is unlikely that platforms with older operating systems meet the minimum hardware requirements (see [“Computer Hardware Requirements” on page 20](#)).

Java[®] Runtime Environment Requirement

The VOP software application is a Java-based program. Therefore, you need a compatible version of Java Runtime Environment (JRE[™]) installed on your computer.

Note – Your computer must have version JRE 1.5, or higher, to properly install and run VOP release 1.0.10, or higher.

Before attempting to install and run VOP, verify the presence, and release level of JRE.

- On a Windows OS, open the Control Panel, and double-click Add and Remove Programs.
- On a Linux/UNIX OS, see your system administrator.

Software Installation

This chapter provides instructions to install/update the Java Runtime Environment (JRE) and the *customer (system administrator)* version of the Virtual Operator Panel (VOP).

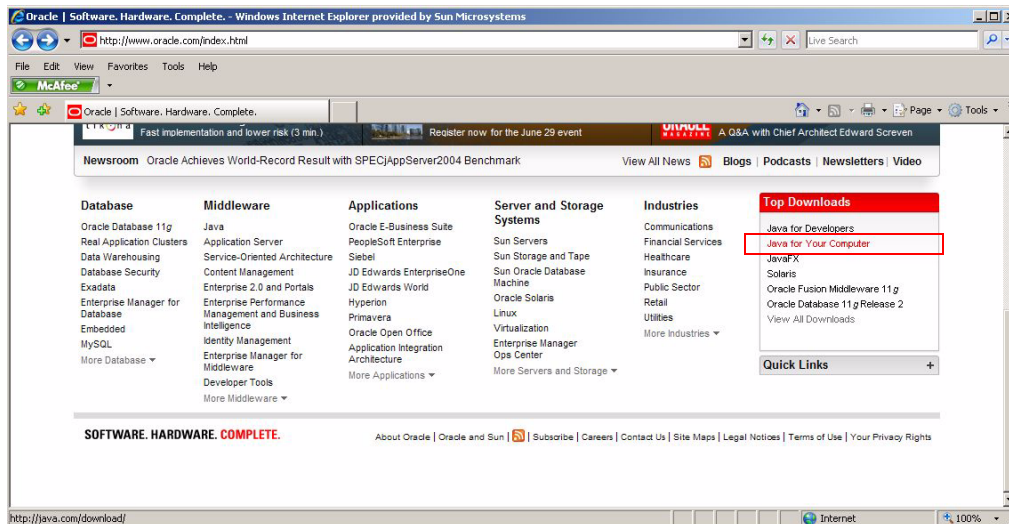
Install the Java Runtime Environment

To install/update the Java Runtime Environment, go to <http://www.oracle.com>.

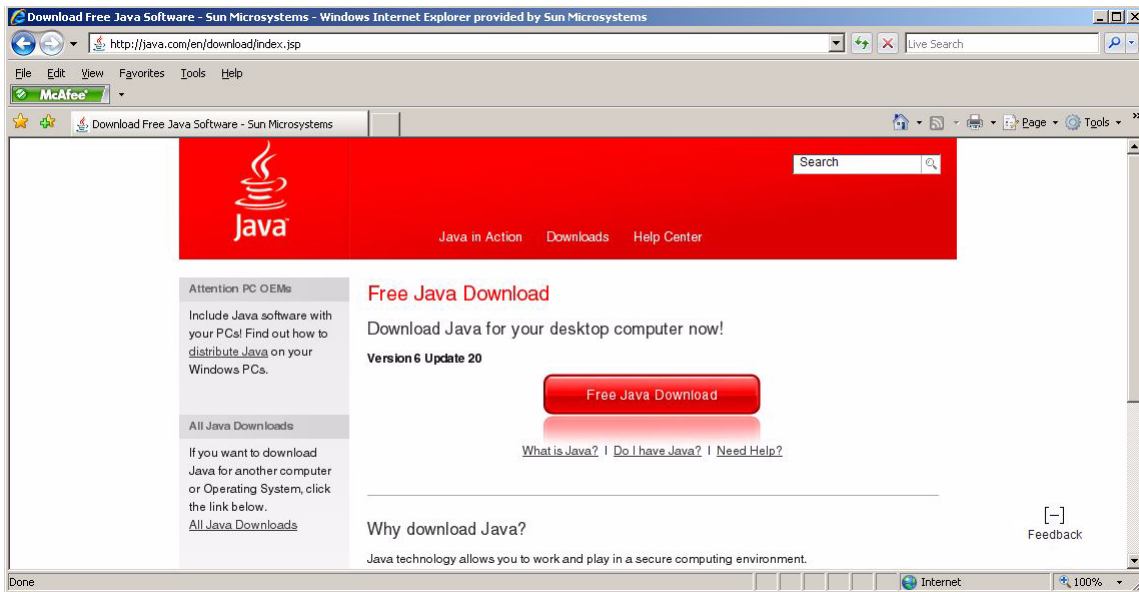
Note – The Oracle web pages are dynamic and subject to frequent changes. Therefore, the actual pages you see might differ from the examples in this section.

1. Click the **Java for Your Computer** link in the **Top Downloads** area in the lower right of the screen.

FIGURE 2-1 Oracle Home Page



A page containing the current Java download appears.



2. Click the Free Java Download button.

A page containing a description of the download for your browser appears.



Note – A link is present below the Free Java Download button that provides access to Java for other operating systems. There is also a link for Installation Instructions.

3. Click the Free Java Download button.

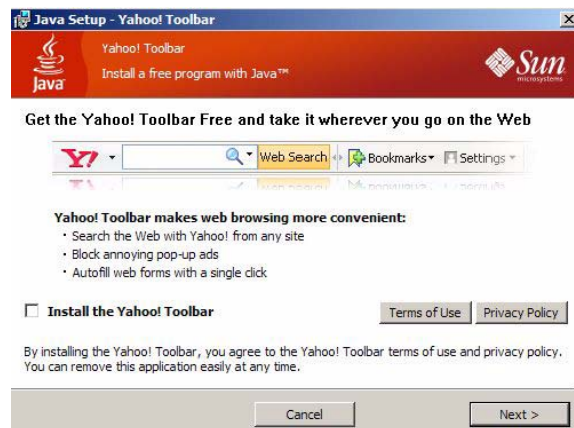
4. Follow the on-screen prompts to start the installation.

You can choose to run or save the file. If you choose to run the software, the Welcome to Java window appears.



5. Click the Install button.

The Java Setup dialog box offers the installation of the Yahoo! toolbar.

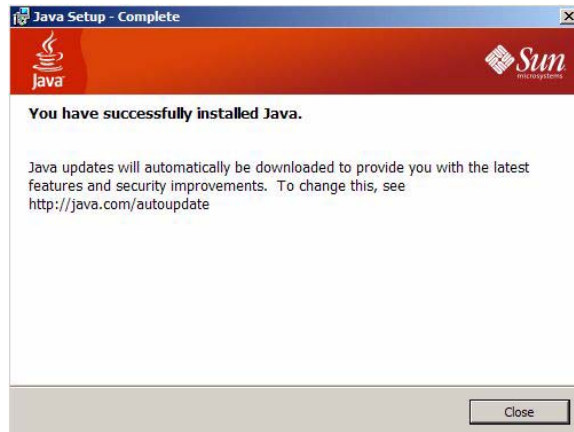


6. Make your selection and click the Next button.

A progress bar appears.



An installation complete message appears.



VOP Application Software

The VOP application software installation process consists of four parts:

- Downloading the latest VOP version (zip file)
- Extracting (unpacking) the zipped (compressed) contents
- Installing and launching VOP
- Performing post-installation options

▼ To Download a VOP Zip File

Begin the VOP installation process by downloading the latest VOP version release level zip file from the designated download resource.

1. Create a local sub-folder for the VOP download.

Create the folder as a direct subordinate to the root (home folder in Linux/UNIX) and name it *VOP_download* or another name of your choice.

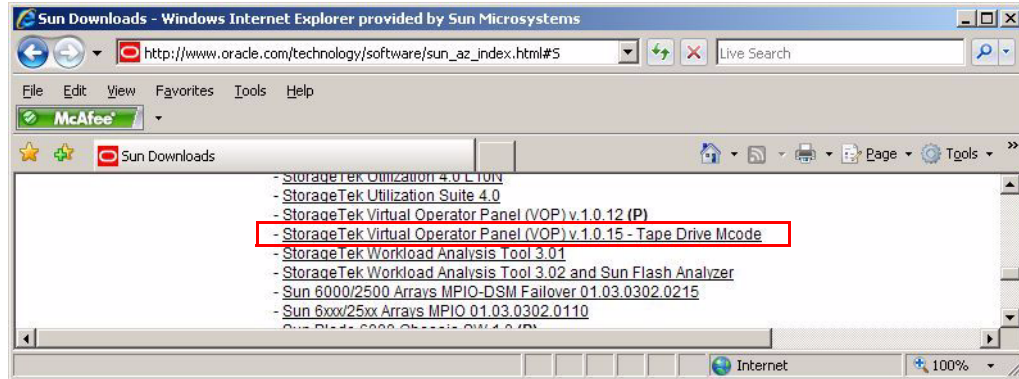
2. Download the latest version of the program from the Download Center.

Tip – Use the following URL:

http://www.oracle.com/technology/software/sun_az_index.html#S

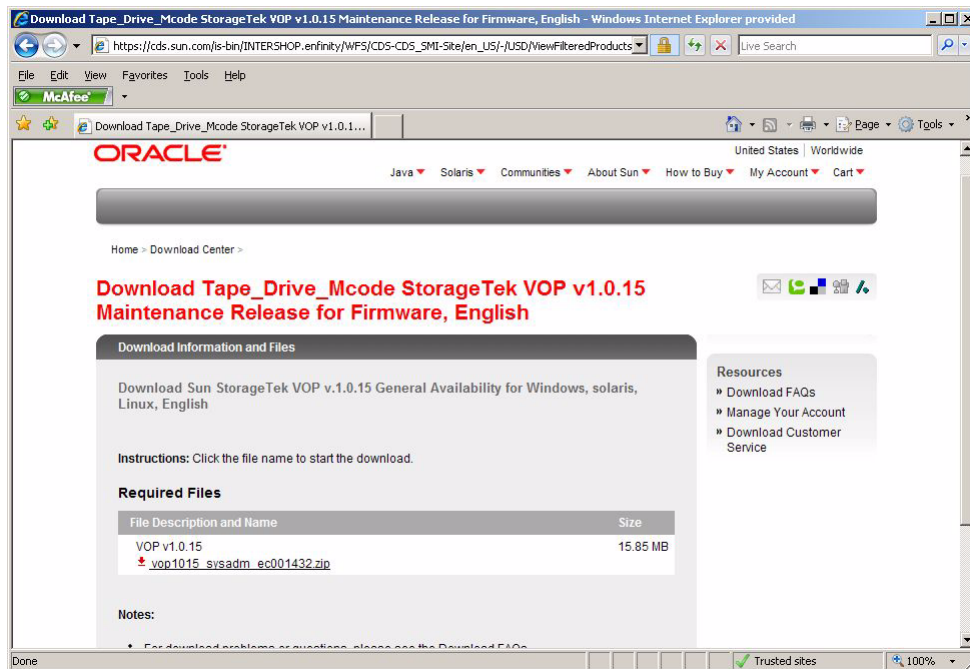
a. Scroll through the S section to locate StorageTek Virtual Operator Panel (VOP).

The example below shows the StorageTek Virtual Operator Panel (VOP) v1.0.15 - Tape Drive Mcode link.



b. Click the VOP link.

c. Follow the on-screen prompts to login, accept the license, and obtain access to the download file.



3. Save the VOP zip file to the folder created in Step 1.

After the VOP zip file is saved to your local disk, you can exit from the web page.

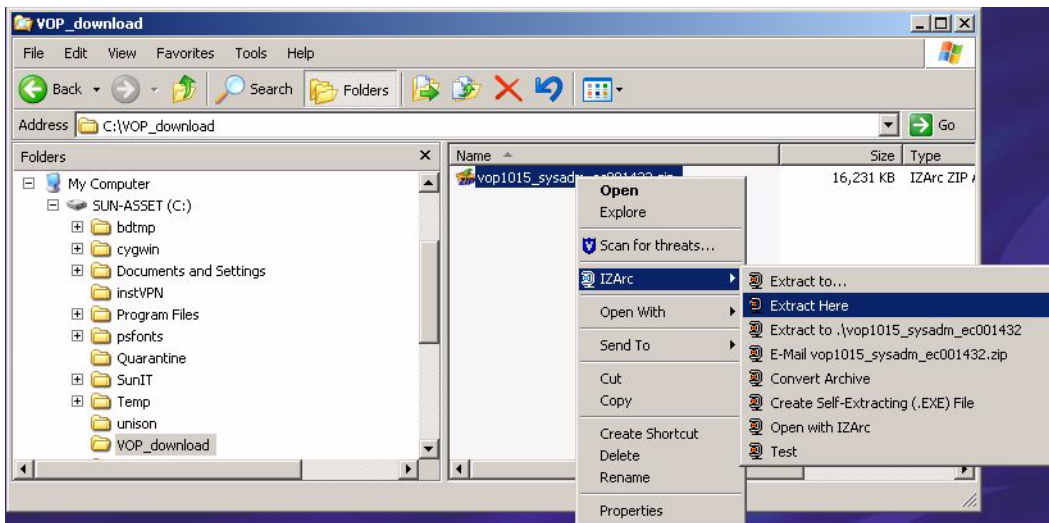
▼ To Extract VOP Files

Note – The example procedure uses the Windows OS as a representative example and might not be completely accurate for other OS types.

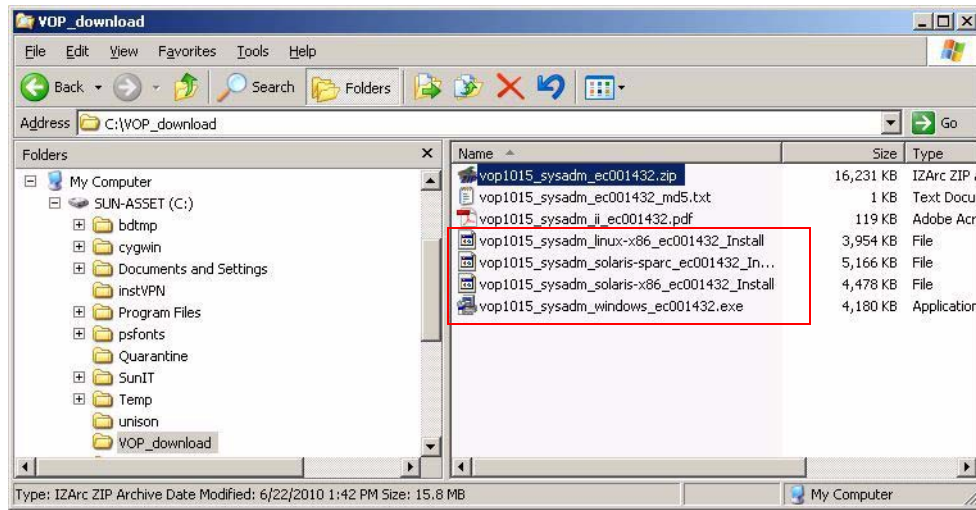
There are several methods of extracting the VOP folders/files from the zip file. The following example is modeled on the Windows XP operating system and the IZArc utility. The following procedure uses the most direct method to extract the VOP files within the download folder.

1. **Open the sub-folder that you created in Step 1 of “To Download a VOP Zip File” on page 26.**
2. **Right click on the zip file.**
3. **Choose IZArc > Extract to here.**

The VOP files are extracted into the current folder.



Note – The zip file contents will vary relative to the specific VOP version.



The example above shows four install files, each one for a different host (Linux-x86, Solaris-SPARC, Solaris-x86, and Windows). Each file is executable.

VOP Installation

Note – The example procedure uses the Windows OS as a representative example and might not be completely accurate for other OS types.

VOP software installation consists of the following activities:

- Installing the software
- Launching each VOP program
- Verifying version levels
- Performing post-installation options

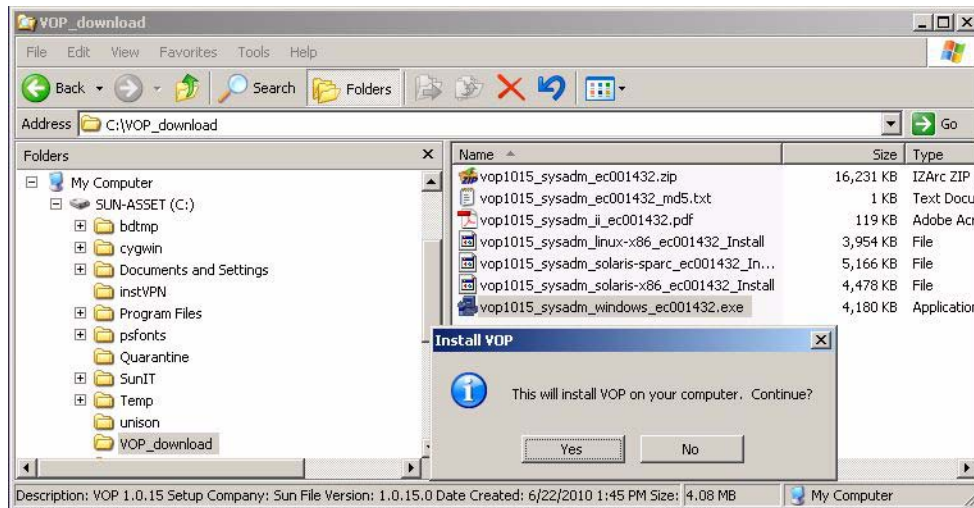
Note – VOP version 1.0.15 is used as a representative example of the installation process. The primary installation differences between VOP versions are filenames, the actual installation program, and the quickstart links and desktop shortcuts created by the installation program.

▼ To Perform an Installation for the Windows OS

The automatic setup process installs VOP program files within the Windows Program Files structure and creates a Start Menu path for launching the program.

1. Double-click the executable (.exe) Windows file.

An information dialog box appears.



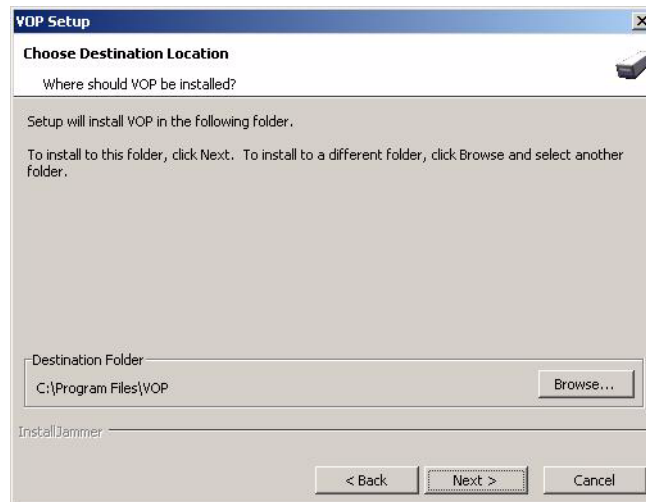
2. Click the Yes button to continue.

The installation wizard window appears.



3. Click the Next button, accept the license agreement, and click Yes.

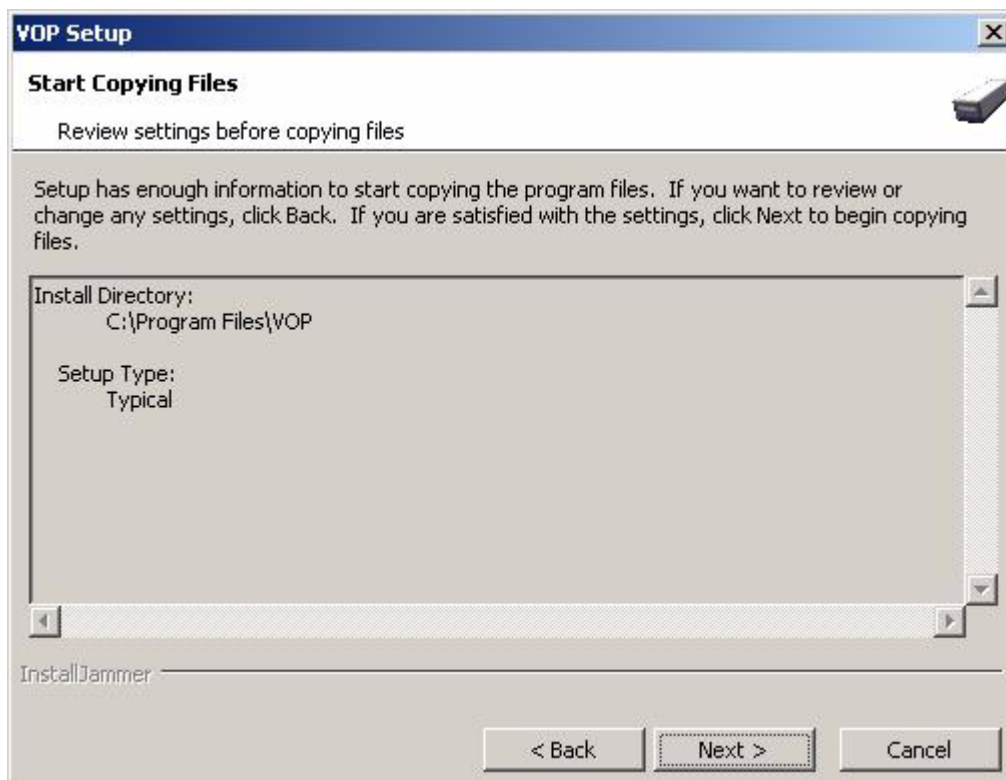
4. Specify the directory for the wizard to install the VOP files.



5. Click the Next button to continue.

The copy files screen appears.

6. Click the Next button to continue.



Installation progress information appears on the screen.

7. Click Finish on the Wizard Complete screen.

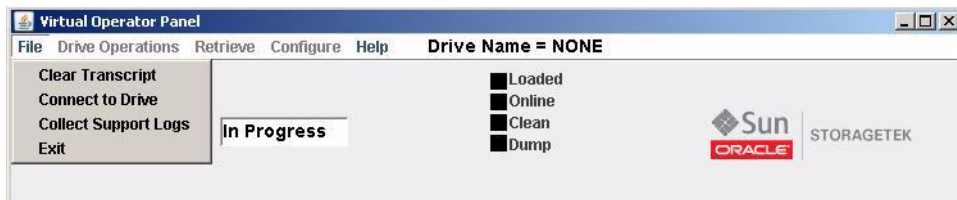


Note – The number of desktop and Quickstart shortcuts can vary from one VOP release to the next.

The VOP program launches.

8. Exit the program.

Tip – Click the “X” in the upper right corner, use the Exit command in the File menu or use the shortcut keys (ALT+F to open the file menu and SHIFT+E to exit).

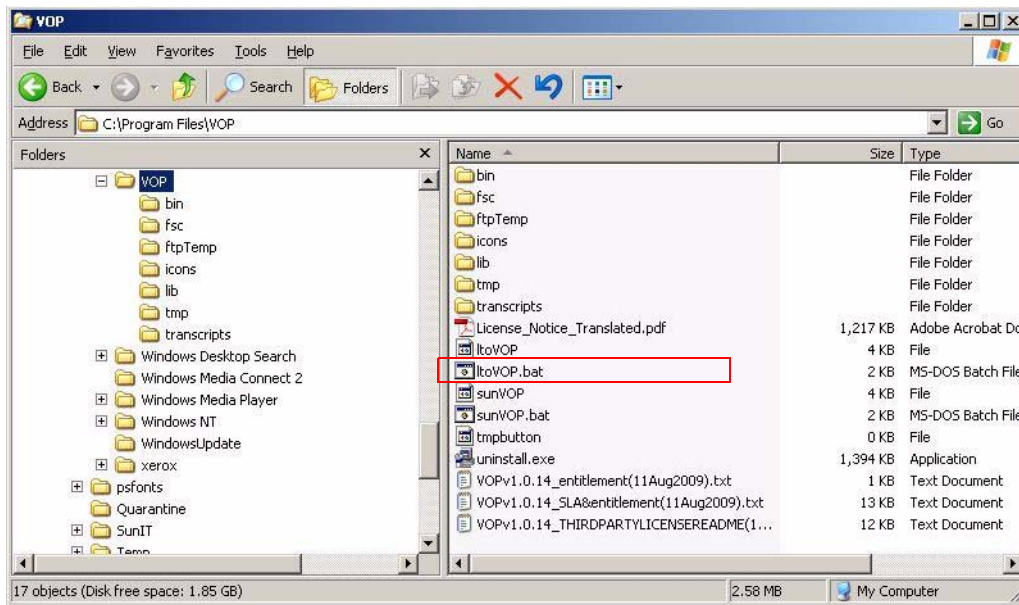


▼ To Test Launch the ItoVOP Program, Windows

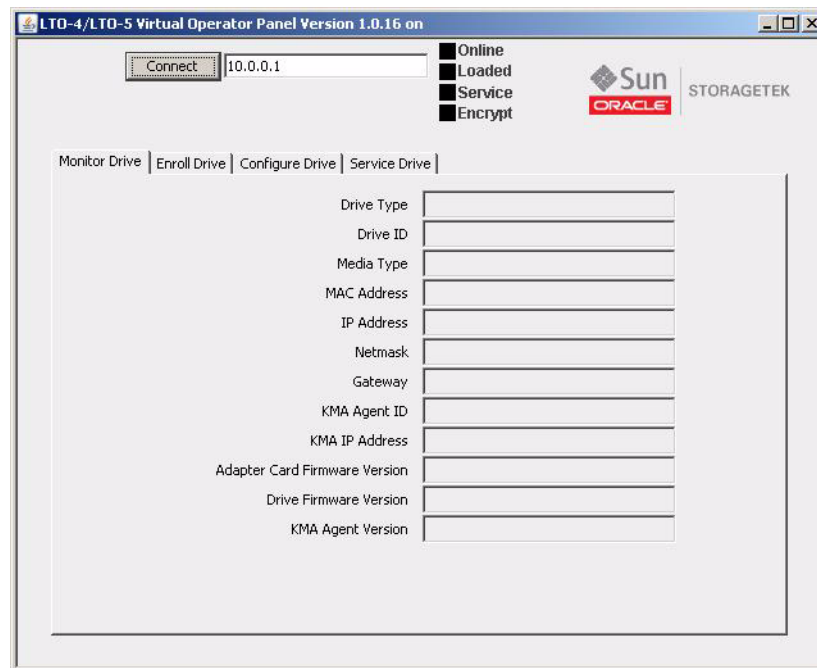
The ItoVOP program is available in VOP 1.0.12 or higher. The following example uses the ItoVOP.bat file to launch the program. Other methods are usually available to launch the program.

1. Open the VOP folder.

2. Double-click the ltoVOP.bat file.



The LTO Virtual Operator Panel window opens.



Note – The VOP version number appears near the center of the GUI title bar.

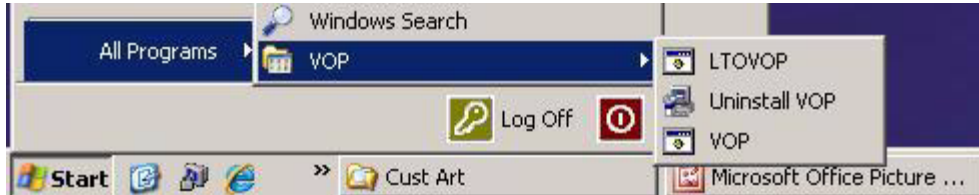
3. Exit from the ltoVOP program.

Tip – Click the “X” in the upper right corner of the window.

▼ To Determine the sunVOP/Java Version, Windows

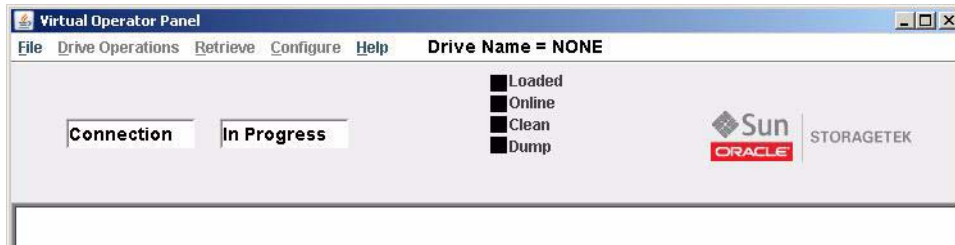
Use the About command in the Help menu to verify the VOP version and Java version.

1. Click Start, elect the All Programs > VOP program folder, and select the VOP executable file.



Note – The installation process for certain versions of VOP provides a quick start for LTOVOP. Make sure to select the VOP option whenever multiple options are present.

The VOP application window opens.

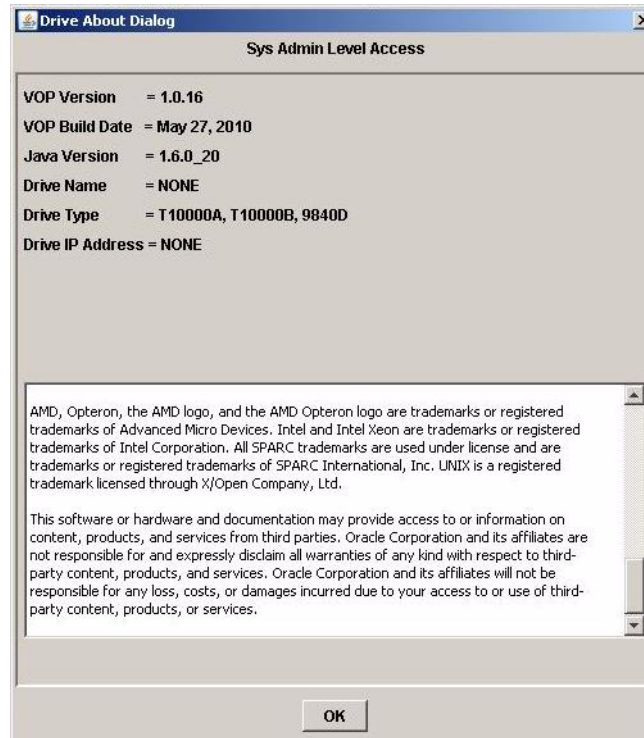


Note – There is a noticeable delay when you open the VOP application for the first time of every PC power-on session due to the anti-virus scan.

Tip – Connection In Progress appears in the two drive message windows, but the application is open without actually initiating a drive connection. Notice that the Drive Name is NONE and all status indicators are black.

2. Choose **About** from the **Help** menu.

The Drive About Dialog box opens.



3. Confirm the release levels in the **VOP Version** and the **Java Version** fields.

If either of the release levels is not correct, replace it with the proper level.

4. Click the **OK** button or use the **ALT+O** shortcut keys to close the **About** dialog box.

5. Exit the program.

Tip – Use the **File** menu or click the “X” in the upper right corner.



VOP Post-Installation Options, Windows

When you have confirmed the VOP programs open and the release levels are correct, you can optionally delete down-level versions or unneeded VOP folders or files. You should delete or empty the VOP download folder that was created to temporarily hold the VOP download.

▼ (Optional) To Delete Unneeded Windows Folders or Files

Note – After you have confirmed the newest version of the VOP programs are fully functional, it is considered best practice to remove/delete unneeded VOP folders.

The following procedure removes/deletes unneeded VOP program files:

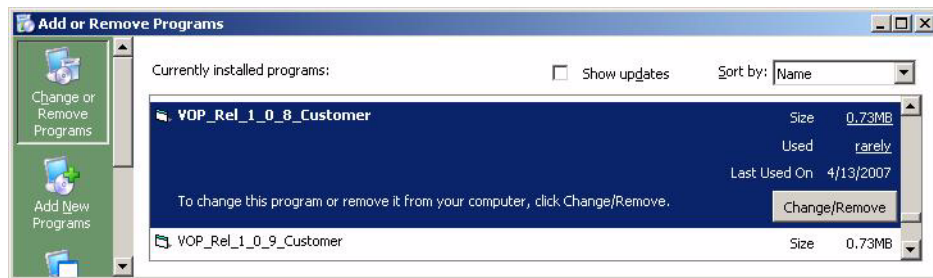
1. **Remove the down-level VOP program folders/files:**
 - a. **Open the Control Panel, Add or Remove Programs utility.**

The VOP versions are listed.



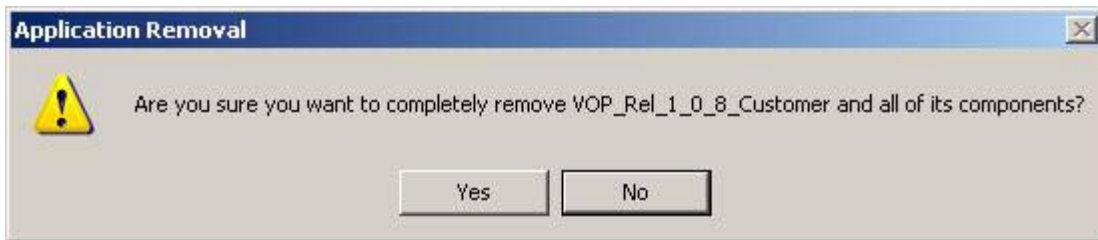
- b. **Select the down-level VOP program.**

Once you make the selection (VOP_Rel_1_0_8_Customer in the previous image), the Add or Remove Program window changes, as shown below.



- c. Click **Change/Remove** to start the removal process.

An alert box appears.



- d. Click either **Yes** to confirm or **No** to cancel.

After the old VOP is removed, a confirmation notice appears.

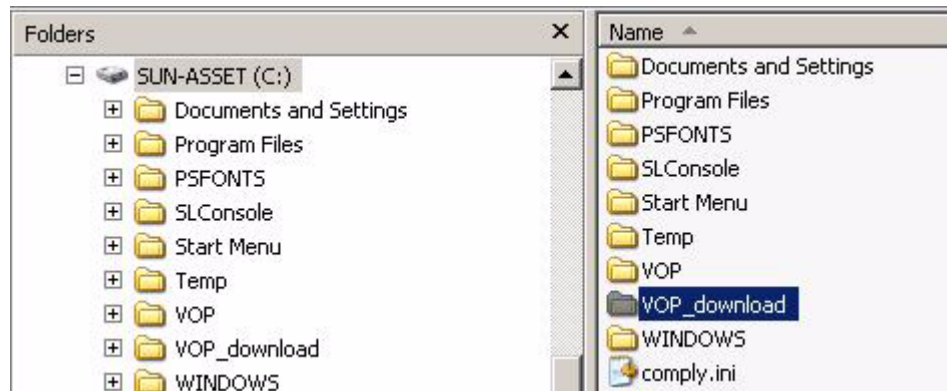


- e. Click **OK**, close the **Add or Remove Program** window, and close the **Control Panel**.

2. Delete the VOP_download folder:

- a. **Open the root folder.**

The VOP_download folder you created to hold and extract (unzip) the VOP program folders and files is listed.



b. Right-click the VOP_download folder and choose Delete.

The Confirm Folder Delete dialog box appears.



c. Click Yes to confirm or No to cancel.

After the VOP_download folder is deleted, it no longer appears in the folder tree.

Starting VOP Programs

This chapter assumes that the Virtual Operator Panel (VOP) operates with an Ethernet connection to a single tape drive. See [Appendix B](#) for additional guidelines when operating VOP within a multiple-drive private network.

For basic hardware requirements and a description of the drive connection, see [“Computer Hardware Requirements”](#) on page 20.

Early versions of the VOP application provided an operator panel for only the T10000A tape drive. Now it provides an operator panel for other T-series tape drives (T10000A, T10000B, and T9840D) and also enables encryption enrollment of various tape drives.

Overview

This chapter contains instructions for starting the VOP applications on a Windows platform. Because the operating systems provide multiple means to start (launch) the VOP applications, you can choose any one of those listed: There are two versions:

- T-series VOP
- [VOP Application for LTO Tape Drives](#)

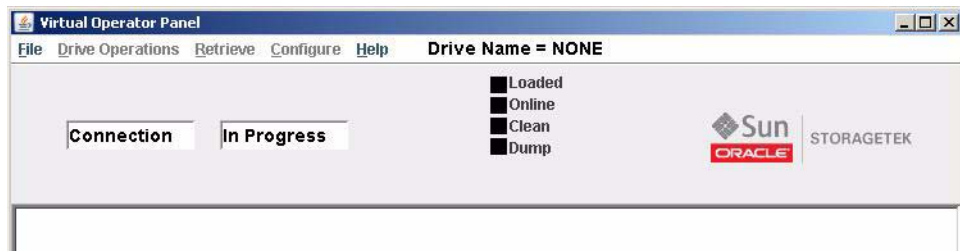
Note – Specific instructions are not provided for other operating systems.

T-series VOP

You can start the VOP application in the following ways:

- [“To Use the Windows Start Menu, Programs List”](#) on page 40
- [“To Use the Desktop Shortcut”](#) on page 41
- [“To Use Windows Explorer”](#) on page 41.
- [“To Use the Run Dialog Box”](#) on page 42

The application appears in a separate window as shown in the following figure:

FIGURE 3-1 VOP, Not Connected (Windows Version)

Note – At this point, the application is open, but a drive connection has not been established. The key indications that VOP is not connected to the drive are that only two menu names are blue, the Drive Name = NONE, and all status indicators are black.

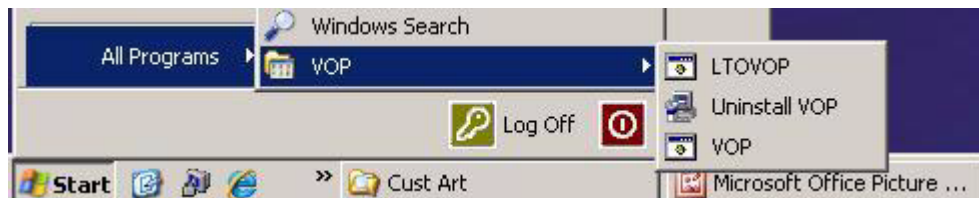
See [Chapter 4, “VOP Operation - T-series Tape Drives”](#) for detailed information on connecting to a drive and using the application.

▼ To Use the Windows Start Menu, Programs List

During VOP installation, the installation wizard created a pointer in the start menu program list to the executable VOP files.

1. **Click Start and move the cursor to All Programs > VOP folder.**

Other selections appear for LTOVOP, VOP, and the uninstall VOP.



Note – The installation process for certain versions of VOP provides a quick start for LTOVOP. Make sure to select the VOP option if multiple options are present.

2. **Click the pointer name (VOP).**

The VOP window opens ([FIGURE 3-1 on page 40](#)).

Note – There is a noticeable delay for the VOP application window to open for the first time of every PC power-on session while your anti-virus scans. Subsequent VOP launches, in the same powered session, are quicker.

▼ To Use the Desktop Shortcut

- Double-click the shortcut icon.



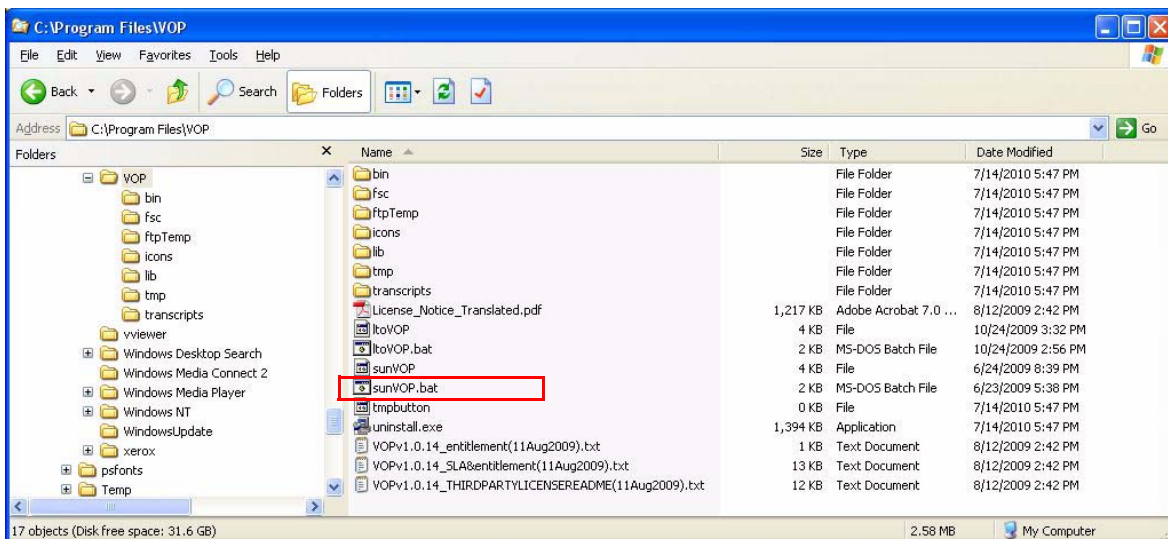
The VOP opens (FIGURE 3-1 on page 40).

Note – The installation wizard generally creates a desktop shortcut.

▼ To Use Windows Explorer

You can start VOP from Windows Explorer:

- Navigate to the VOP folder, then double-click the sunVOP.bat file.



The VOP opens (FIGURE 3-1 on page 40).

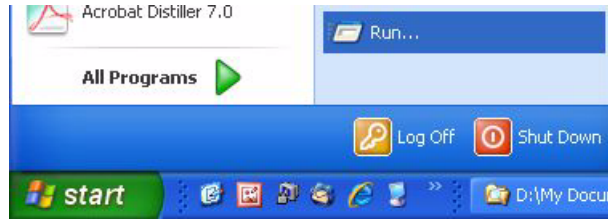
▼ To Use the Run Dialog Box

Use the following guidelines to launch VOP from the Run dialog box:

1. Click Start.

The Start menu opens.

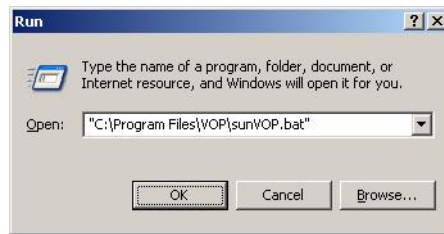
2. Select Run.



The Run dialog box opens.

3. Do one of the following:

- Enter the path to the VOP executable file.
- Click the down arrow to select a previous entry.
- Click the Browse command button to locate the desired VOP executable file.



4. Click OK.

The VOP opens ([FIGURE 3-1 on page 40](#)).

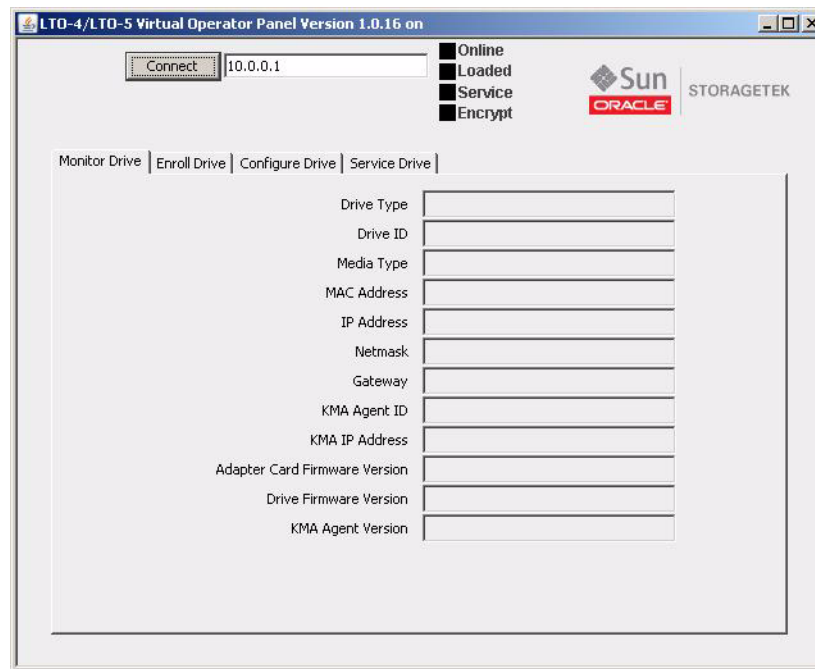
VOP Application for LTO Tape Drives

You can start the ltoVOP application in the following ways:

- “To Use Windows Explorer” on page 44
- “To Use the Windows Desktop Shortcut Icon” on page 44
- “To Use the Windows Run Dialog Box” on page 44
- “To Use the Windows Start Menu, Programs List” on page 45

The application appears in a separate window as shown in the following figure.

FIGURE 3-2 LTO-4/LTO-5 Virtual Operator Panel (Windows Version)



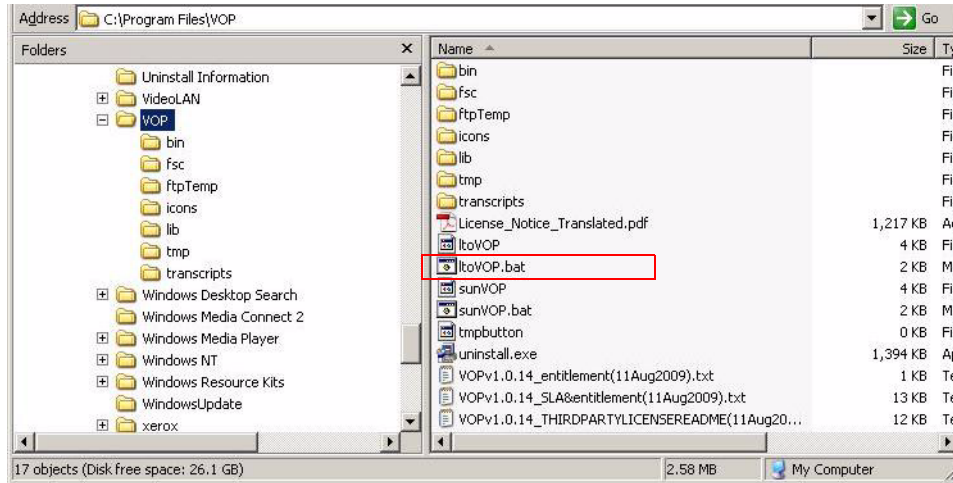
Note – At this point, the application is open, but a drive connection has not been completed. The key indications that VOP is not connected to the drive are the lack of an IP address in the title bar, the grey color of the Connect button, and all status indicators are black.

See [Chapter 5, “VOP Operation - LTO”](#) for detailed information on the ltoVOP application.

▼ To Use Windows Explorer

You can start ItoVOP from Windows Explorer

- **Navigate to the VOP folder, then double-click the ItoVOP.bat file.**



The ItoVOP opens (FIGURE 3-2 on page 43).

▼ To Use the Windows Desktop Shortcut Icon

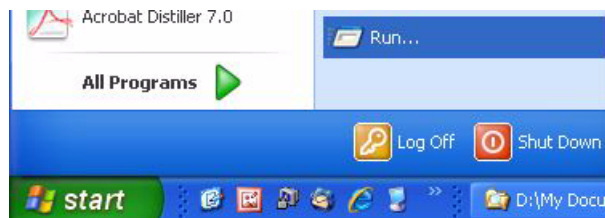
- **Double-click the shortcut icon.**



The ItoVOP window opens (FIGURE 3-2 on page 43).

▼ To Use the Windows Run Dialog Box

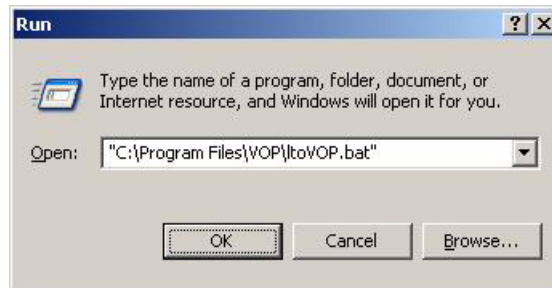
1. **Click Start.**
2. **Select Run.**



The Run dialog box opens.

3. Do one of the following:

- Enter the path to the desired VOP executable file.
- Click the down arrow to select a previous entry.
- Click the Browse command button to locate the desired VOP executable file.



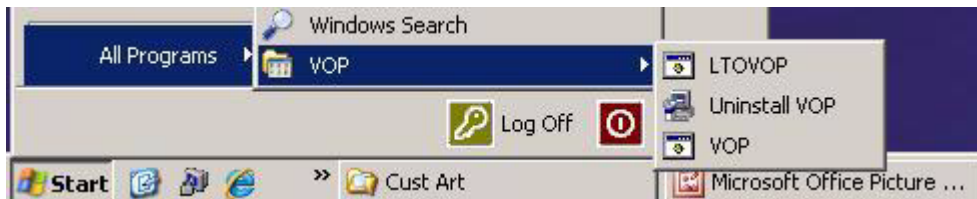
4. Click OK.

The ltoVOP window opens (FIGURE 3-2 on page 43).

▼ To Use the Windows Start Menu, Programs List

During VOP installation, the installation wizard created a pointer in the start menu program list to the LTOVOP executable file.

1. Click Start and select the All Programs > VOP folder.



Note – The installation process for certain versions of VOP provides a quick start for LTOVOP. Make sure to select the VOP option if multiple options are present.

2. Click the pointer name (LTOVOP).

The LTO VOP window opens (FIGURE 3-2 on page 43).

Note – There is a noticeable delay for the LTO VOP application window to open for the first time of every PC power-on session while your anti-virus scans. Subsequent VOP launches, in the same powered session, are quicker.

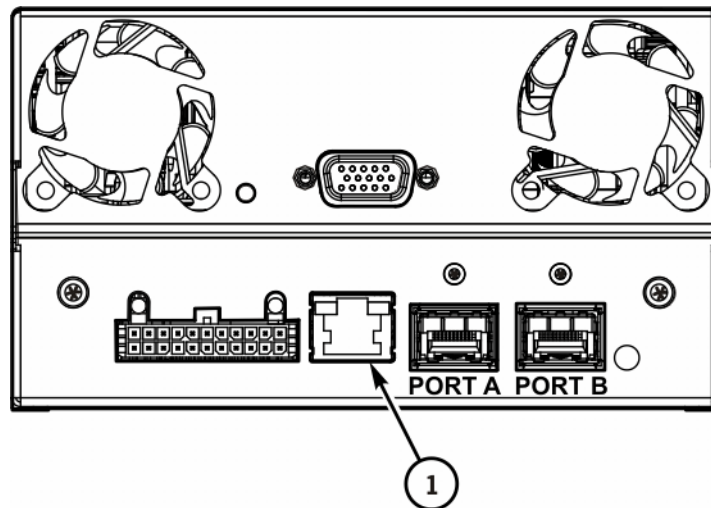
VOP Operation - T-series Tape Drives

This chapter describes operation of the Virtual Operator Panel (VOP) over a direct connection to the Ethernet port of a T9840D or T10000 tape drive (see [FIGURE 4-1](#)). See [Appendix B](#) for additional guidelines when operating VOP within a multiple-drive private network. The VOP does not interact with the host data input/output interface.

The VOP has three basic operational functions:

- Monitor drive status
- View or change drive configuration settings
- Use drive operation utilities

FIGURE 4-1 T10000 Tape Drive Rear Panel



T103_582

1. Ethernet Port

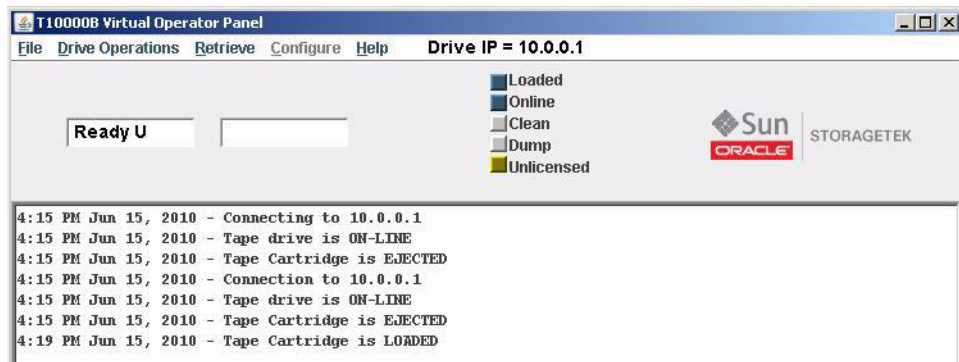
When a Service Delivery Platform (SDP) site unit is installed and monitoring tape drives over an Ethernet private network, the drive Ethernet port is 100% dedicated to the service network. Therefore, the drive Ethernet port is *not* available for connection to the customer VOP.

Note – Many of the sunVOP application window illustrations in this section were captured on a Windows XP platform running VOP version 1.0.14 and T10000 tape drive code level 1.44.x06. While the Linux/UNIX platform VOP application window has a slightly different look, the guidelines apply equally. Using a different VOP version or drive code level might produce alternate results such as: a different number of commands in a given main menu, different labeling of the encryption status LED, or different parameter values for a configuration attribute.

Use sunVOP Menus and Controls

The VOP application window provides several menus. When the drive is online, the unavailable Configure menu label is dimmed (see [FIGURE 4-2](#)). Some menu commands have additional sub-menus or dialog boxes.

FIGURE 4-2 VOP Window Menus and Indicators/Controls



During the course of selected operations, the VOP text message pane displays a transcript of the VOP actions or a prompt for additional input or actions.

Some status indicators are also an active link that permits you to toggle the state of the monitored drive item. Note that the mouse cursor does not change when you place the cursor on that type of indicator.

Note – The following sections provide more detailed guidelines.

▼ To Use Menu Bar Selections

In general, the following two steps are basic for all menus:

1. **Identify whether the menu you want to access is available.**

Available menu items are blue.

Tip – You must set the drive offline to access the Configure menu.

2. **Click on an available menu label.**

A drop-down list of available commands appears.

3. **Select a command or sub-menu.**

The drive message text windows, drive status indicators, and the transcript pane provides informational feedback.

Tip – The drive must be offline to perform functions such as Format Tape.

4. **Make sure the drive is in the online state before ending a VOP session.**

File Menu

Note – Commands in the File and Help menu are available whether VOP is connected to a drive or not, and if connected when the drive is either online or offline.

The File menu (FIGURE 4-3) has four commands. A description of each command is provided in the following table.

TABLE 4-1 File Menu Commands

Command	Description
Clear Transcript	Clears the entire VOP transcript pane and closes the file menu.
Connect to Drive	Connects VOP to the tape drive. Note - You must be connected to the drive before you can use the Drive Operations, Retrieve, or Configure menus.
Collect Support Logs	Collects drive log files that you can forward to product support for analysis.
Exit	Disconnects VOP from the tape drive and closes the VOP window.

FIGURE 4-3 File Menu Commands



▼ To Use the Clear Transcript Command

Use the Clear Transcript command to empty the transcript pane.

1. **Open the File menu.**

Tip – Choose File from the menu bar or use the ALT+F shortcut keys.

2. **Choose Clear Transcript from the File menu.**

The entire VOP transcript pane clears and the file menu closes.

▼ To Use the Connect to Drive Command

Use the following guidelines to connect VOP to a designated drive:

1. **Open the File menu.**

Tip – Choose File in the menu bar or use the ALT+F shortcut keys.

2. **Choose Connect to Drive from the File menu or use the SHIFT+C shortcut keys.**

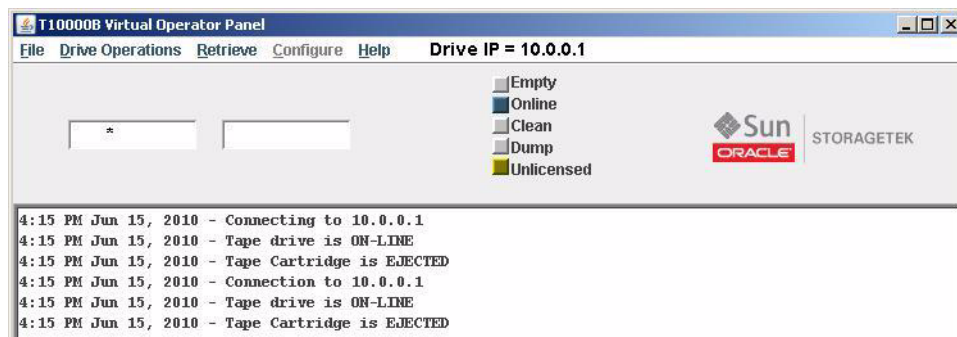
The Connect to Drive dialog box opens.

FIGURE 4-4 Connect to Drive Dialog Box



3. **Enter the drive's IP address or alias in the dialog box, then click OK.**

After the VOP establishes connection with the designated drive, the VOP window changes to the connected stage.



In the connected stage, the menu bar contains the drive IP address or alias, additional menus are accessible, the status indicators are a color other than black, and the text pane/transcript contains message text.

4. (Optional) To connect VOP to a different drive, perform the appropriate action:

a. Determine if you are using a crossover cable connection to a single drive:

- If no, go to Step b.
- If yes, perform the following actions:
 - i. **Disconnect the crossover cable from the tape drive.**
 - ii. **Reconnect the cable to a different drive.**

ii. Reconnect the cable to a different drive.

- If the drive has the same IP address as the previous drive, VOP automatically reconnects.
- If the drive has a different IP address, perform [Step 2](#) and [Step 3](#) to designate the IP address of the new drive.

b. Leave the PC private-network, Ethernet cable connected to the Ethernet switch and designate the new drive IP address (see [Step 2](#) and [Step 3](#)).

Note – The text pane shows that VOP disconnects from the old drive and connects to the new Drive IP address.

▼ To Use the Collect Support Logs Command

1. Open the File menu.

Tip – Choose File from the menu bar or use the ALT+F shortcut keys.

2. Choose Collect Support Logs.

Tip – With VOP 1.0.16, you can use the SHIFT+S shortcut keys.

A text pane message appears after each log is collected, and a final message indicates the location of the archive (.zip) message file. Note that an information message appears if WinZip is not installed on your PC.

▼ To Use the Exit Command

1. Open the File menu.

Tip – Choose File from the menu bar or use the ALT+F shortcut keys.

2. Choose Exit from the File menu or use the SHIFT+E shortcut keys.

The VOP application window closes. If the VOP was connected to a drive, the Ethernet connection terminates.

Drive Operations Menu

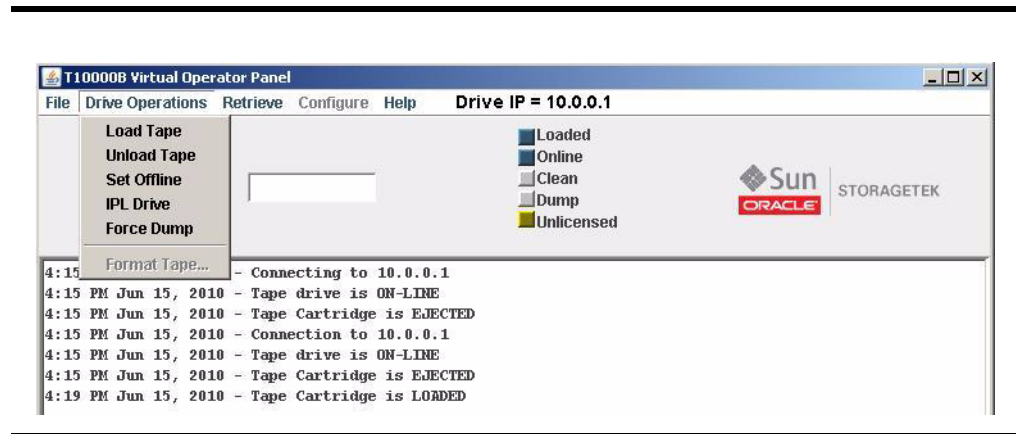
Note – You should consult either the *T10000 Tape Drive Operator’s Guide* (P/N 96174) or the *T9840 Tape Drive User’s Reference Manual* (P/N 95739) for additional information regarding the tape drive, use of a cartridge tape, and general operating procedures.

The Drive Operations menu (FIGURE 4-5) has six commands. You can access the menu by choosing Drive Operations in the menu bar or by using the ALT + D shortcut keys. A description of each command is provided in the following table.

TABLE 4-2 Drive Operations Menu Commands

Command	Description
Load Tape	This command causes a cartridge that is present in the cartridge loading slot to load.
Unload Tape	This command causes a loaded cartridge to rewind and unload.
Set Offline or Set Online	This command changes the state of the tape drive. The command name is opposite of the current drive state (for instance, Set Offline when the drive is online).
IPL Drive	This command causes the tape drive to perform an initial program load (IPL).
Force Dump	This command forces a diagnostic dump of the current contents of various drive registers.
Format Tape	This command reformats a cartridge tape as a code tape, a data tape, or a dump tape. It also provides the capability to rebuild the contents of the tape Media Information Region (MIR).

FIGURE 4-5 Drive Operations Menu Commands



Note – Notice that Format Tape is dimmed to indicate that this command is only available when the drive is offline.

▼ To Use the Load Tape Command

Use this command to reload a cartridge that was previously unloaded but that was not removed from the tape drive loading slot.

1. **Open the Drive Operations menu.**

Tip – Click Drive Operations in the menu bar or use the ALT+D shortcut keys.

2. **Choose Load Tape from the Drive Operations menu or use the SHIFT+L shortcut keys.**

The drive loads the cartridge that is present in the tape drive loading slot. A *ready* message appears in the primary drive message window after the tape advances to the beginning of tape (FIGURE 4-2 on page 48). A message also appears in the text pane to identify that the cartridge is loaded.

▼ To Use the Unload Tape Command

1. **Open the Drive Operations menu.**

Tip – Click Drive Operations in the menu bar or use the ALT+D shortcut keys.

2. **Choose Unload Tape from the Drive Operations menu or use the SHIFT+U shortcut keys.**

A loaded cartridge rewinds and unloads. The text pane shows the unload message and a message appears in the primary drive message window.

3. **Remove the tape cartridge from the drive load slot.**

Note – You must physically remove an unloaded cartridge from the drive by library robotics or manually from the rack mount configuration. Otherwise, the cartridge remains in the loading slot, but *not* loaded into the drive.

▼ To Use the Set Offline/Online Command

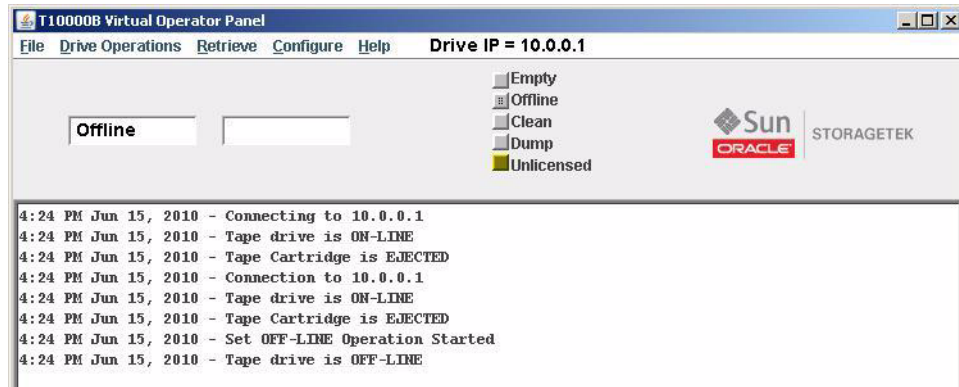
- When the tape drive is online, this command reads Set Offline.
- When the tape drive is offline, this command reads Set Online.

1. **Open the Drive Operations menu.**

Tip – Click Drive Operations in the menu bar or use the ALT+D shortcut keys.

2. Choose the Set command from the Drive Operations menu or use the SHIFT+O shortcut keys.

The message pane example below shows when the Set OFF-LINE operation starts and when the tape drive is OFF-LINE. As the drive goes offline, the status indicator turns gray, the label changes to Offline, and the Offline message appears in the primary drive message window.



In addition, the label for the Configure menu turns blue.

Note – You can also click the Online/Offline status indicator to change the drive state.

▼ To Use the IPL Drive Command

1. Open the Drive Operations menu.

Tip – Click Drive Operations in the menu bar or use the ALT+D shortcut keys.

2. Choose IPL Drive from the Drive Operations menu.

The tape drive performs an initial program load (IPL).

Note – VOP loses communications with the drive during the IPL. Once the drive IPL is successfully completed, VOP automatically reconnects with the drive.

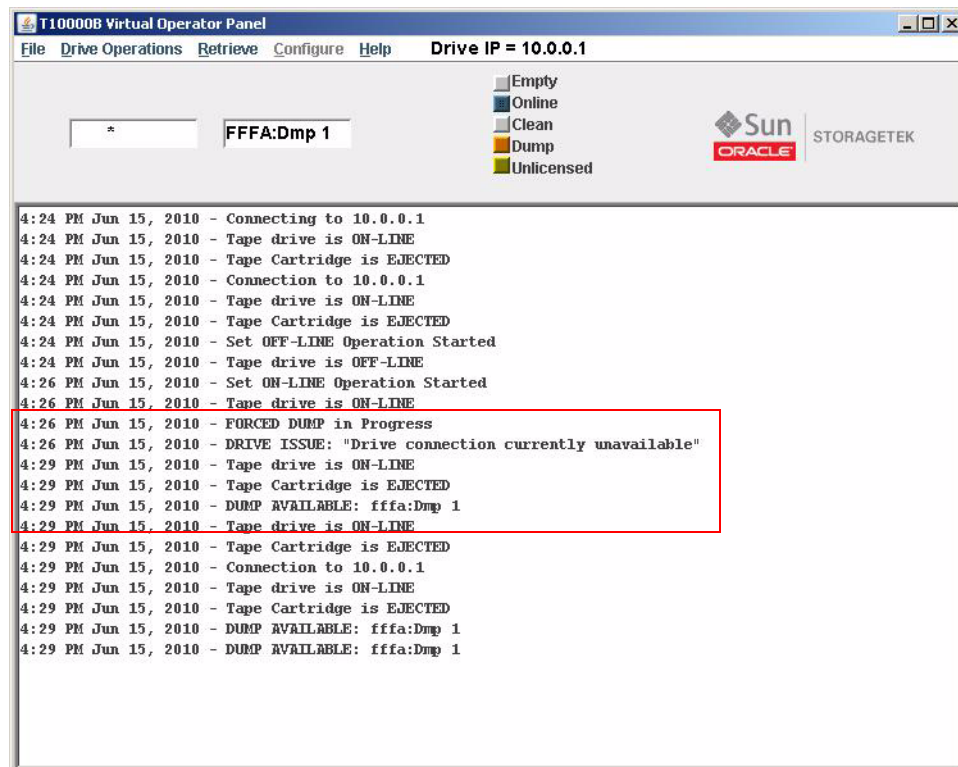
▼ To Use the Force Dump Command

1. Open the Drive Operations menu.

Tip – Click Drive Operations in the menu bar or use the ALT+D shortcut keys.

2. Choose Force Dump from the Drive Operations menu.

The drive stores the dump to internal memory, and the dump status indicator changes to orange in approximately three minutes. The forced dump operation causes a drive IPL, and the VOP loses connection with the drive during the IPL. After the drive successfully completes the IPL, FFFA appears in the secondary drive message window. See the following figure.



Format Tape Command

Note – You must load (mount) and unload (dismount) a cartridge when you use any of the Format Tape functions. This might require you to use a library control path command or utility.

The offline Format Tape command launches a dialog box that provides four utilities that are described in the following table.

TABLE 4-3 Format Tape Utilities

Function	Description
Make data tape	The Make Data Tape utility reformats a tape cartridge for reuse as a <i>data</i> tape cartridge. Existing headers are removed and the Media Information Region (MIR) is rewritten to identify the cartridge as empty and therefore ready for write operations.
Make code tape	The Make Code Tape utility reformats a tape cartridge with a special format, and downloads the drive firmware from the drive memory to the tape cartridge. The MIR is then written to identify the cartridge as a <i>code</i> tape. You can use the code tape to upload drive firmware to other tape drives. The T9840D requires a configuration setting (see FIGURE 4-23 on page 83) followed by the loading of a full code image.
Make dump tape	The Make Dump Tape utility reformats a tape cartridge with a special format. The MIR is written to identify the cartridge as a <i>dump</i> tape. You can use a formatted dump tape to download diagnostic <i>dump</i> data from drive memory.
Rebuild MIR	You can use the Rebuild MIR utility to repair a data tape cartridge that has an invalid or corrupted MIR. The utility reads the file headers all the way to the End of Data mark. Then, the MIR is rewritten to correctly reflect the tape contents. This utility could take well over one hour to rebuild the MIR on a full or nearly full data tape cartridge. See “Media Information Region” in the <i>T10000 Tape Drive Operator’s Guide</i> , PN 96174 for additional MIR information.

The dialog box also contains three command buttons:

- Make - Initiates the selected utility.
- Abort - You can select this option before you load a cartridge in the drive to terminate the utility.
- Done - Closes the dialog box.



Caution – Possible data loss. Do not use a customer data tape to make a code tape or a dump tape.

▼ To Format a Tape Cartridge (*Offline*)

Use the following general guidelines to perform any of the utilities:

1. Make sure the drive is offline.

If not offline, perform one of the following actions:

- a. Click the **Online** status indicator.
- b. Select **Drive Operations > Set Offline** (see [FIGURE 4-5](#) and “[To Use the Set Offline/Online Command](#)” on page 53).
- c. Use shortcut keys (**ALT+D** to open the **Drive Operations** menu followed by **SHIFT+O** to set the drive offline).

2. Choose Format Tape from the Drive Operations menu.

The Format Tape Cartridge dialog box appears.

3. Select the appropriate utility radio button.



4. Click the MAKE button or use the ALT+M shortcut keys to start the selected utility.

A prompt appears in the transcript directing you to insert a cartridge.

Note – If there is a cartridge in the drive, it unloads. You must physically remove the unloaded cartridge.

Tip – Before inserting the cartridge, you can cancel a selected utility by clicking the **ABORT** button or use the **ALT + A** shortcut keys. After you insert the cartridge, the utility runs to completion.

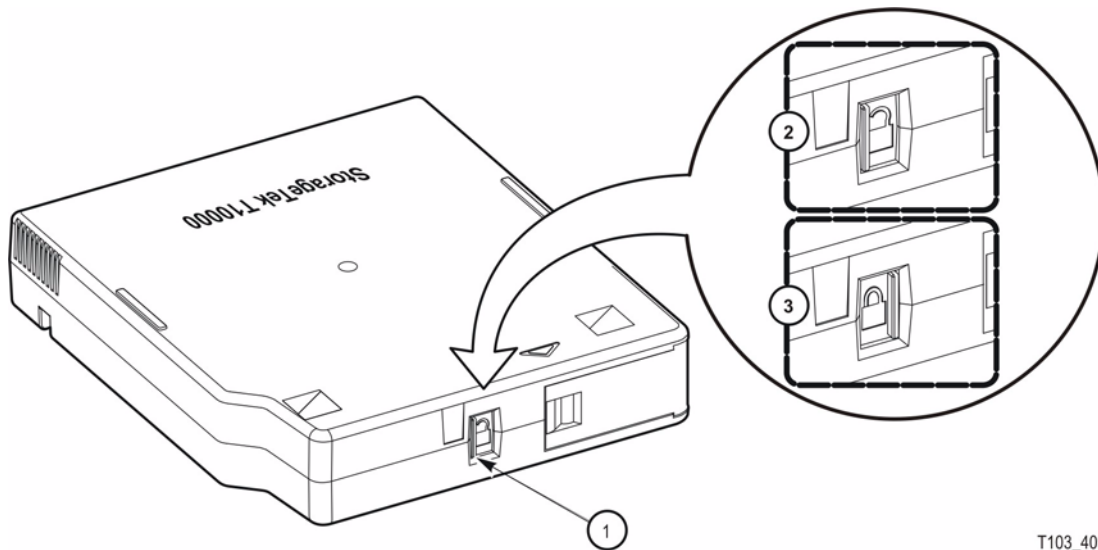


Caution – Do not use the **Make Code Tape** or **Make Dump Tape** functions with a customer data tape.

5. Insert a write-enabled cartridge.

Tip – See [FIGURE 4-6 on page 58](#) for the location of the write-protect switch. Make sure the switch is in the write-enabled position as indicated by the open padlock icon.

FIGURE 4-6 Tape Cartridge Write-Protect Switch



T103_409

1. Write-protect switch
2. Unlocked position
3. Locked position

The drive performs the selected utility, displays related information in the VOP transcript pane, then unloads the cartridge.

6. Remove the unloaded cartridge.

You now have the following options:

- Repeat the current selected format tape command (go to [Step 4 on page 57](#)).
- Select a different format tape command (go to [Step 3 on page 57](#)).
- Exit the format tape submenu (continue with [Step 7](#)).

7. Click the DONE button or use the ALT+D shortcut keys to exit the format tape submenu.

The Format Tape Cartridge dialog box closes.

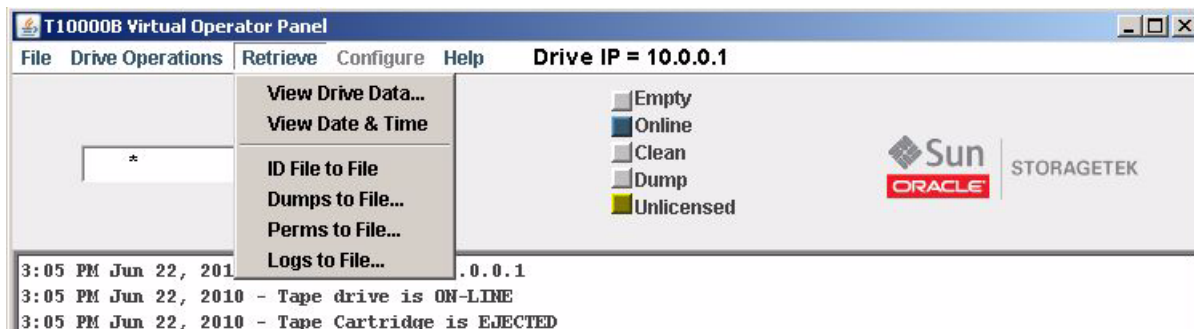
Retrieve Menu

The Retrieve menu (FIGURE 4-7) has six commands. You can access the menu by choosing Retrieve in the menu bar or by using the ALT+R shortcut keys. A description of each command is provided in the following table.

TABLE 4-4 Retrieve Menu Commands

Command	Description
View Drive Data	This command uses selectable property sheets (tabs) to show the current drive configuration settings and other drive data.
View Date & Time	This command shows the setting of the internal timer in the drive.
ID File to File	This command retrieves and saves the ID file to the ID folder in the VOP directory.
Dumps to File	This command retrieves and saves diagnostic dumps that are currently stored in the drive memory.
Perms to File	This command retrieves and saves all the permanent errors that are currently stored in the drive memory.
Logs to File	This command retrieves and saves event logs that are currently stored in the drive memory.

FIGURE 4-7 Retrieve Menu



Note – The Retrieve menu is available when the drive is online or offline.

Additional information is available in the following sections:

- [“View Drive Data Command” on page 60](#)
- [“To Use the View Date & Time Command” on page 71](#)
- [“To Use the ID File to File Command” on page 71](#)
- [“To Use the Save Dumps to a File Command” on page 71](#)
- [“To Use the Perms to File Command” on page 73](#)
- [“To Use the Logs to File Command” on page 74](#)

View Drive Data Command

The View Drive Data command uses selectable property sheets (tabs) to show the current drive configuration settings and other drive data. The property sheets names for an encryption-capable drive are:

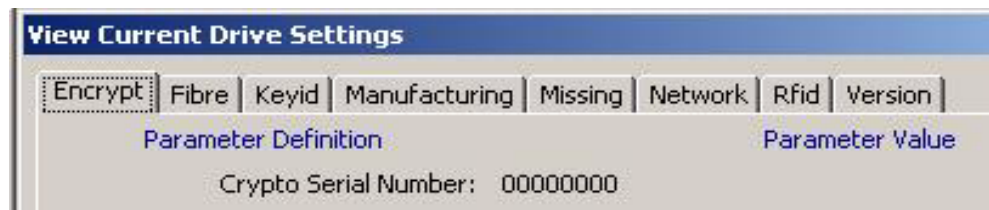
- Encrypt (encryption-capable drive)
- Fibre - shows either Fibre Channel or FICON properties based upon the interface
- Keyid (encryption-capable drive)
- Manufacturing
- Missing (encryption-capable drive)
- Network
- Rfid (a cartridge must be loaded in the drive) - not available on a T9840D drive
- Version

The View Current Settings window of an encryption-capable drive shows the Encrypt tab (FIGURE 4-8) while a drive that is not encryption-capable shows the Fibre tab (FIGURE 4-10).

Note – Several of the following pages contain example property sheets.

▼ To Use the View Drive Data Command

1. Choose **Retrieve** from the menu bar or use the **ALT+R** shortcut keys to open the menu.
2. Choose **View Drive Data** from the Retrieve menu or use the **SHIFT+V** shortcut keys. The View Current Drive Settings window appears.



Note – The View Current Drive Settings property sheets are for viewing purposes only. See “Configure Menu” on page 75 for detailed descriptions and guidelines regarding the changing of any configuration setting.

3. Click the tab for the property sheet that you want to view. The property sheet shows the current drive settings for that property.
4. (Optional) Click a different property sheet tab.

Note – Repeat this step as necessary to gather all required information.

5. Click the **OK** button or use the **ALT+O** shortcut keys to close the window.

Encrypt Property Sheet

The Encrypt tab shows encryption-related data: see [FIGURE 4-8](#) for a T10000 drive or see [FIGURE 4-9](#) on page 62 for a T9840D drive.

FIGURE 4-8 View Current Drive Settings, Encrypt Tab - T10000 Drive

Parameter Definition	Parameter Value
Crypto Serial Number:	000005c7
Device zeroed:	No
Device reset:	No
Encryption active:	No
Running in FIPS mode:	No
FIPS certification level:	N/A
Licensed:	No
Use tokens / DPKM:	UNKN
Permanently encrypting:	UNKN
Agent ID (Enroll):	
*Pass Phrase (Enroll):	
KMS IPv4/6 addr (Enroll):	
Active device keys:	No
(date/timestamp):	***
Active media keys:	No
(date/timestamp):	***
(drv pool dts):	***
(dev keys dts):	***
(mapping dts):	***
Number of media keys:	0
EKT address:	000.000.000.000
OKT-1 address:	000.000.000.000
OKT-2 address:	000.000.000.000
Need device keys:	No
Rcvd device keys:	No
(Hold date/timestamp):	***
Need media keys:	No
Rcvd media keys:	No
(Hold date/timestamp):	***

OK

If you want additional information on FIPS aspects of the drive, see the document titled either *T10000A Encrypting Tape Drive Security Policy* or *T10000B Encrypting Tape Drive Security Policy*.

FIGURE 4-9 View Current Drive Settings, Encrypt Tab - T9840D Drive

The screenshot shows a dialog box titled "View Current Drive Settings" with a close button (X) in the top right corner. The dialog has a tabbed interface with the following tabs: Encrypt (selected), Fibre, Keyid, Manufacturing, Missing, Network, and Version. The main area is divided into two columns: "Parameter Definition" and "Parameter Value".

Parameter Definition	Parameter Value
Crypto Serial Number:	00000000
Device zeroed:	No
Device reset:	No
Encryption active:	No
Running in FIPS mode:	No
FIPS certification level:	N/A
Licensed:	No
Encryption mode:	UNKN
Permanently encrypting:	UNKN
Agent ID (Enroll):	
*Pass Phrase (Enroll):	
KMS IPv4/6 addr (Enroll):	
Active media keys:	No
Number of media keys:	0
Need media keys:	No
Rcvd media keys:	No

An "OK" button is located at the bottom center of the dialog box.

Fibre Property Sheet

The data shown on the Fibre tab is specific to the type of drive interface. The Fibre Channel Protocol (FCP), shown in [FIGURE 4-10](#), has FCP specific data. The Fibre Interface Connection (FICON), shown in [FIGURE 4-11 on page 64](#) has FICON specific data. There is a similar list of parameters for a T9840D drive.

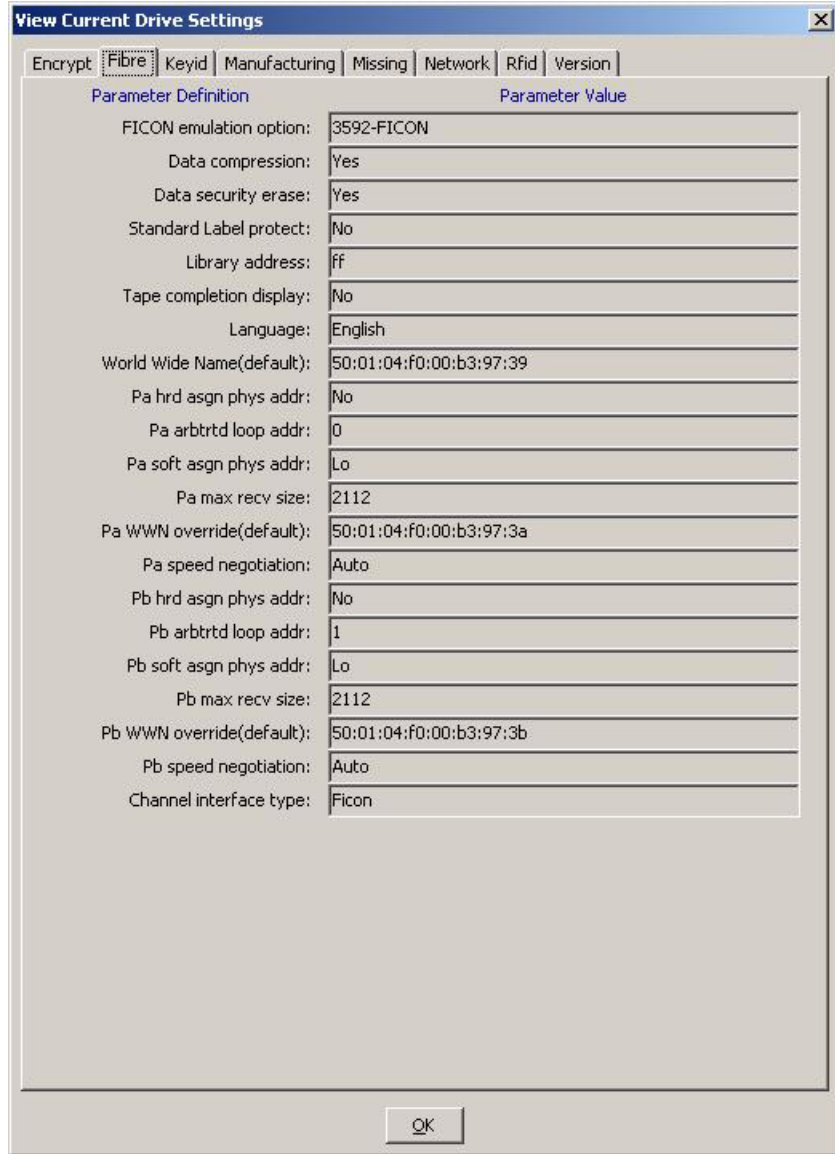
FIGURE 4-10 View Current Drive Settings, Fibre Tab (FCP Interface)

Parameter Definition	Parameter Value
Fibre emulation option:	Standard-FIBRE
Data compression:	Yes
Data security erase:	Yes
Standard Label protect:	No
Library address:	ff
Tape completion display:	No
Language:	English
World Wide Name(default):	50:01:04:f0:00:b3:97:39
Pa hrd asgn phys addr:	No
Pa arbtrtd loop addr:	0
Pa soft asgn phys addr:	Lo
Pa max recv size:	2048
Pa WWN override(default):	50:01:04:f0:00:b3:97:3a
Pa speed negotiation:	Auto
Pb hrd asgn phys addr:	No
Pb arbtrtd loop addr:	1
Pb soft asgn phys addr:	Lo
Pb max recv size:	2048
Pb WWN override(default):	50:01:04:f0:00:b3:97:3b
Pb speed negotiation:	Auto
Channel interface type:	Fibre

OK

The Fibre tab for the FICON interface (FIGURE 4-11) is very similar to the FCP interface (FIGURE 4-10 on page 63), with the exception of the FICON-specific emulation setting.

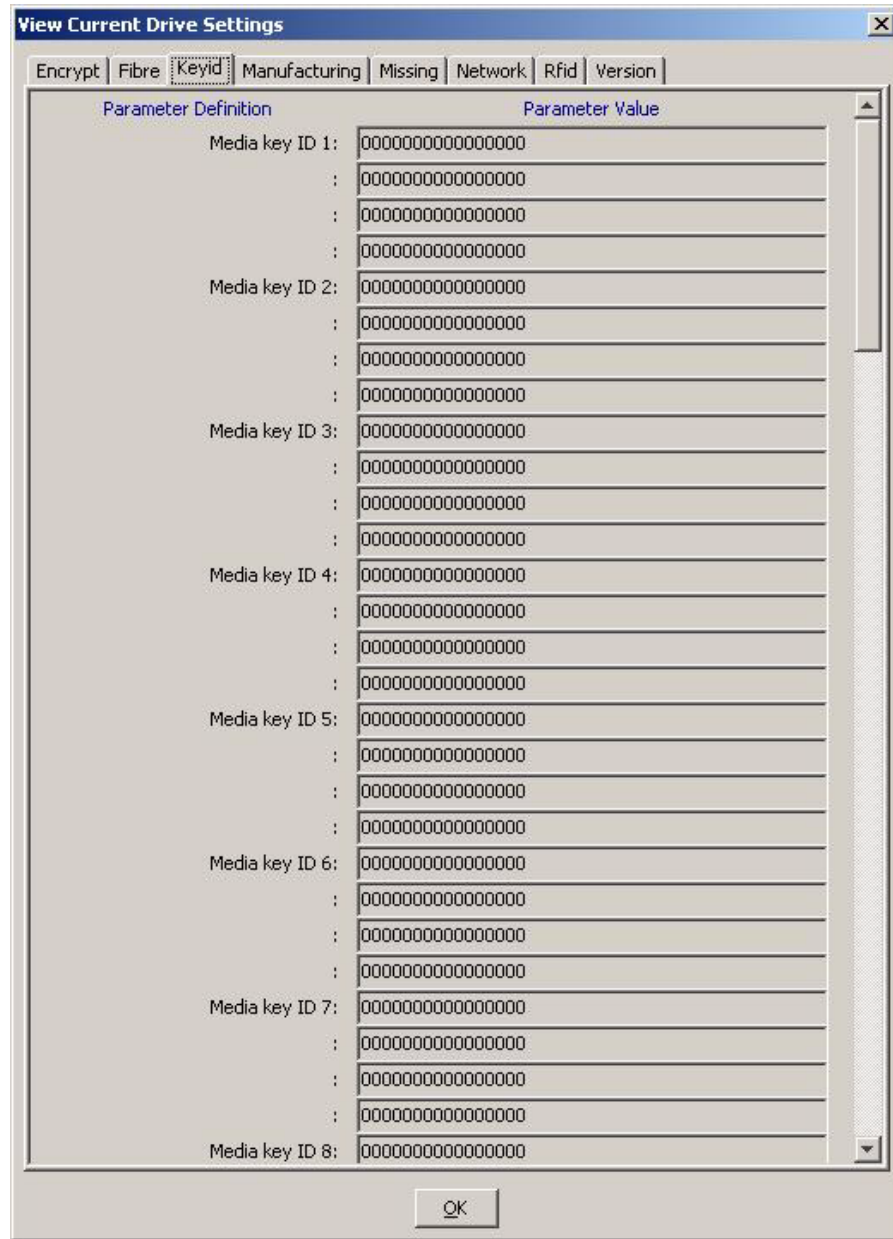
FIGURE 4-11 View Current Drive Settings, Fibre Tab (FICON Interface)



Keyid Property Sheet

The Keyid tab (FIGURE 4-12) shows a list of key identifiers.

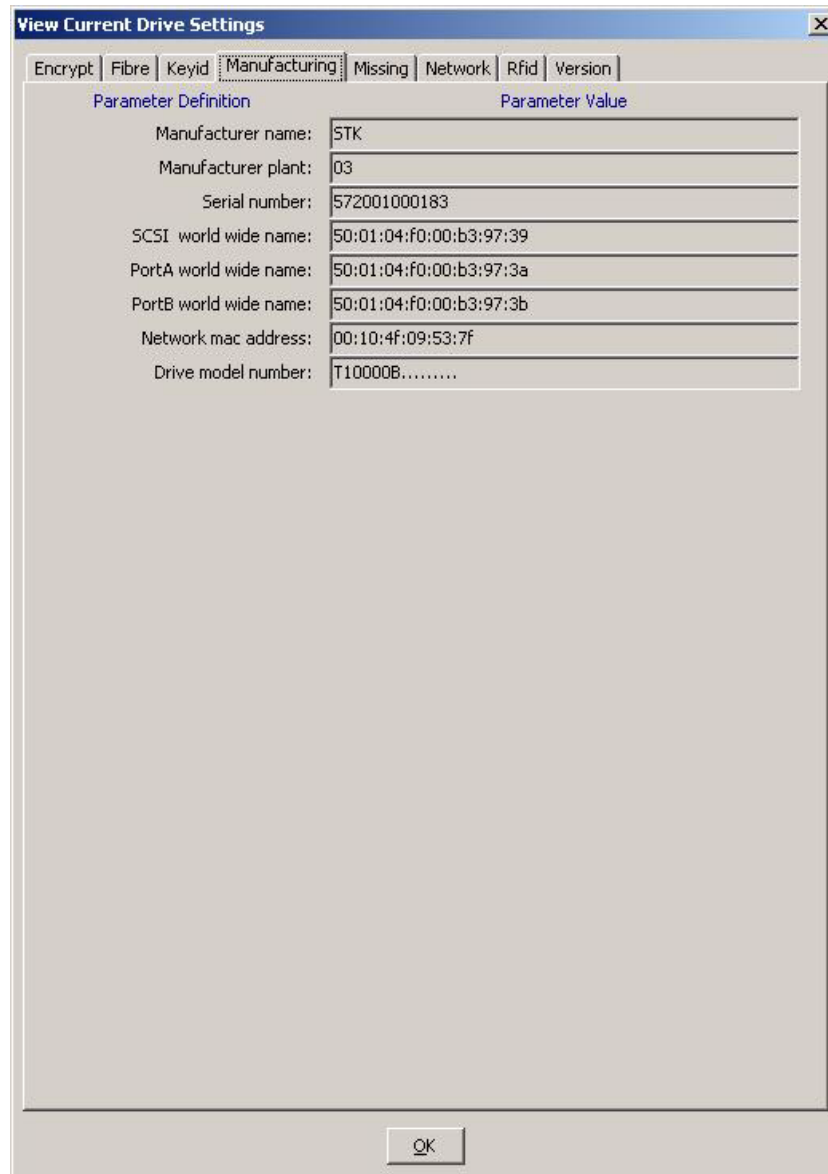
FIGURE 4-12 View Current Drive Settings, Keyid



Manufacturing Property Sheet

The Manufacturing tab (FIGURE 4-13) shows factory preset settings, such as drive serial number, and default world wide names.

FIGURE 4-13 View Current Drive Settings, Manufacturing Tab

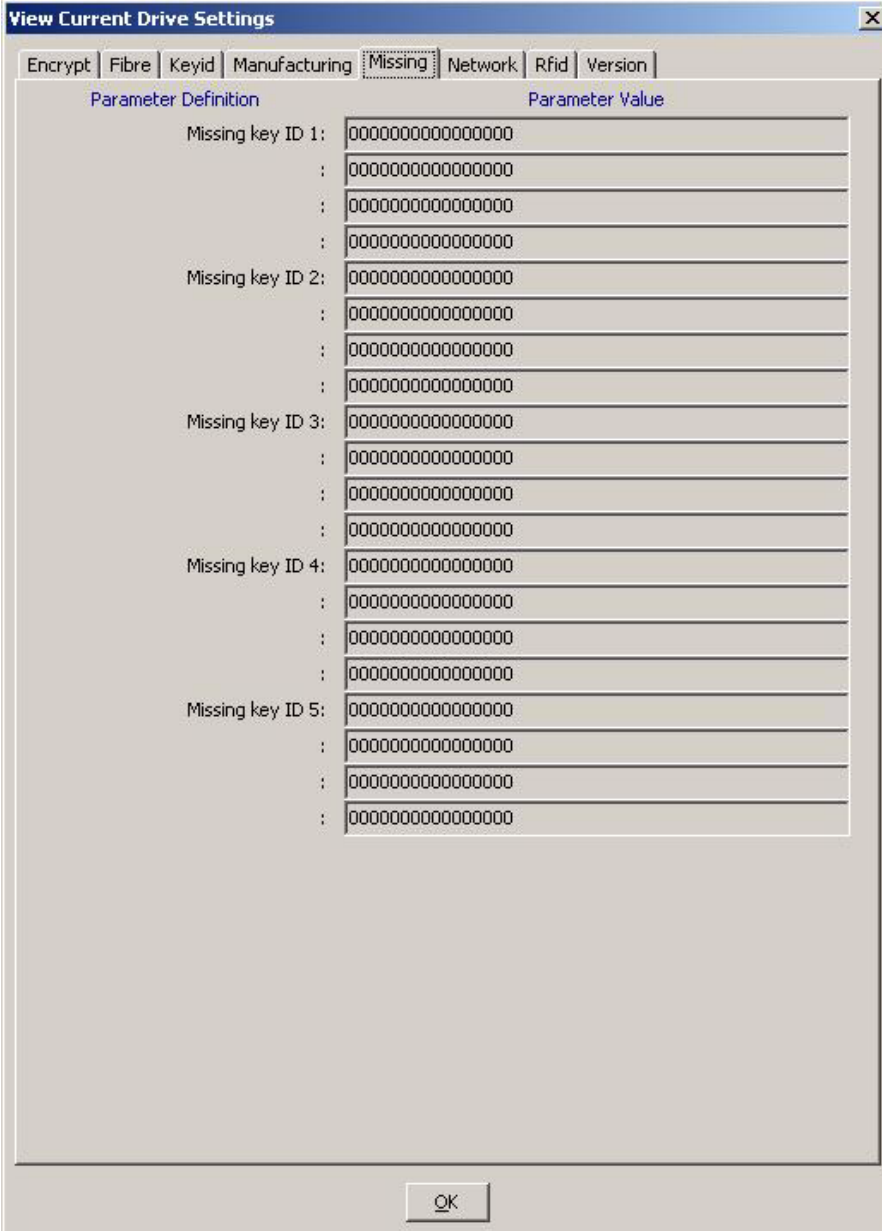


Note – The serial number of a T10000A drive begins with 531 while the serial number of a T10000B drive begins with 572. The drive model number of a T10000A drive appears as T10000 (see the figure above) while the model number of a T10000B drive appears as T10000B.

Missing Property Sheet

The Missing tab (FIGURE 4-14) shows a list of missing key identifiers.

FIGURE 4-14 View Current Drive Settings, Missing



The screenshot shows a dialog box titled "View Current Drive Settings" with a close button (X) in the top right corner. The dialog has a tabbed interface with the following tabs: Encrypt, Fibre, Keyid, Manufacturing, Missing (selected), Network, Rfid, and Version. The main area is divided into two columns: "Parameter Definition" and "Parameter Value".

Parameter Definition	Parameter Value
Missing key ID 1:	0000000000000000
:	0000000000000000
:	0000000000000000
:	0000000000000000
Missing key ID 2:	0000000000000000
:	0000000000000000
:	0000000000000000
:	0000000000000000
Missing key ID 3:	0000000000000000
:	0000000000000000
:	0000000000000000
:	0000000000000000
Missing key ID 4:	0000000000000000
:	0000000000000000
:	0000000000000000
:	0000000000000000
Missing key ID 5:	0000000000000000
:	0000000000000000
:	0000000000000000
:	0000000000000000

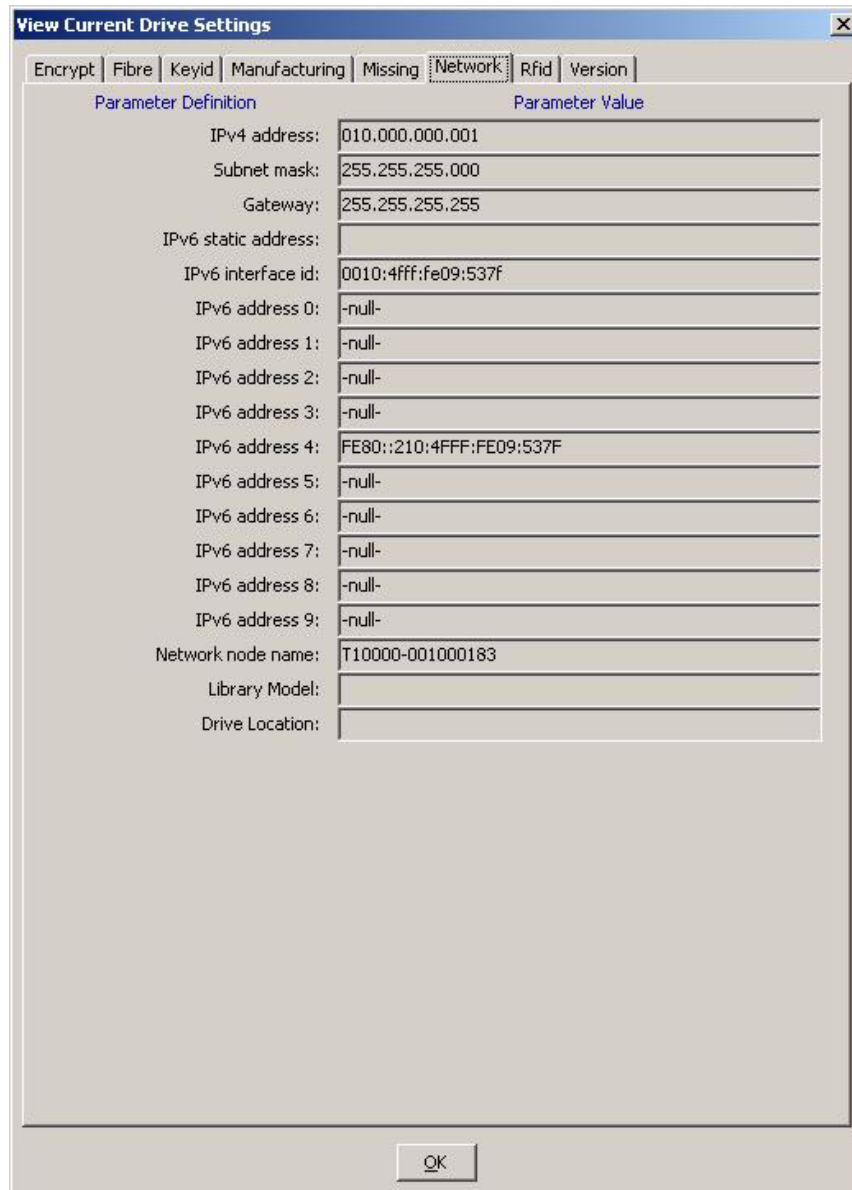
An "OK" button is located at the bottom center of the dialog box.

Network Property Sheet

The Network tab (FIGURE 4-15) shows the Network node name. The factory preset default is comprised of the drive model number (t10000) and the last nine digits of the drive serial number.

This tab also shows the current static IP settings. FIGURE 4-15 shows factory preset static IP parameters, which can be changed through the Configure menu (see “Network Property Sheet” on page 90).

FIGURE 4-15 View Current Drive Settings, Network Tab



Rfid Property Sheet

The Rfid tab (FIGURE 4-16) shows data stored in the radio-frequency identification (Rfid) memory chip in the T10000 tape cartridge. The Rfid chip stores data related to cartridge contents and statistics. The data is similar to data stored in the media information region (MIR) on the tape, and is updated with each cartridge mount/dismount. An Rfid module in the drive reads the Rfid chip while the cartridge is loaded, and is viewable (read-only) by the VOP application.

FIGURE 4-16 View Current Drive Settings, Rfid Tab

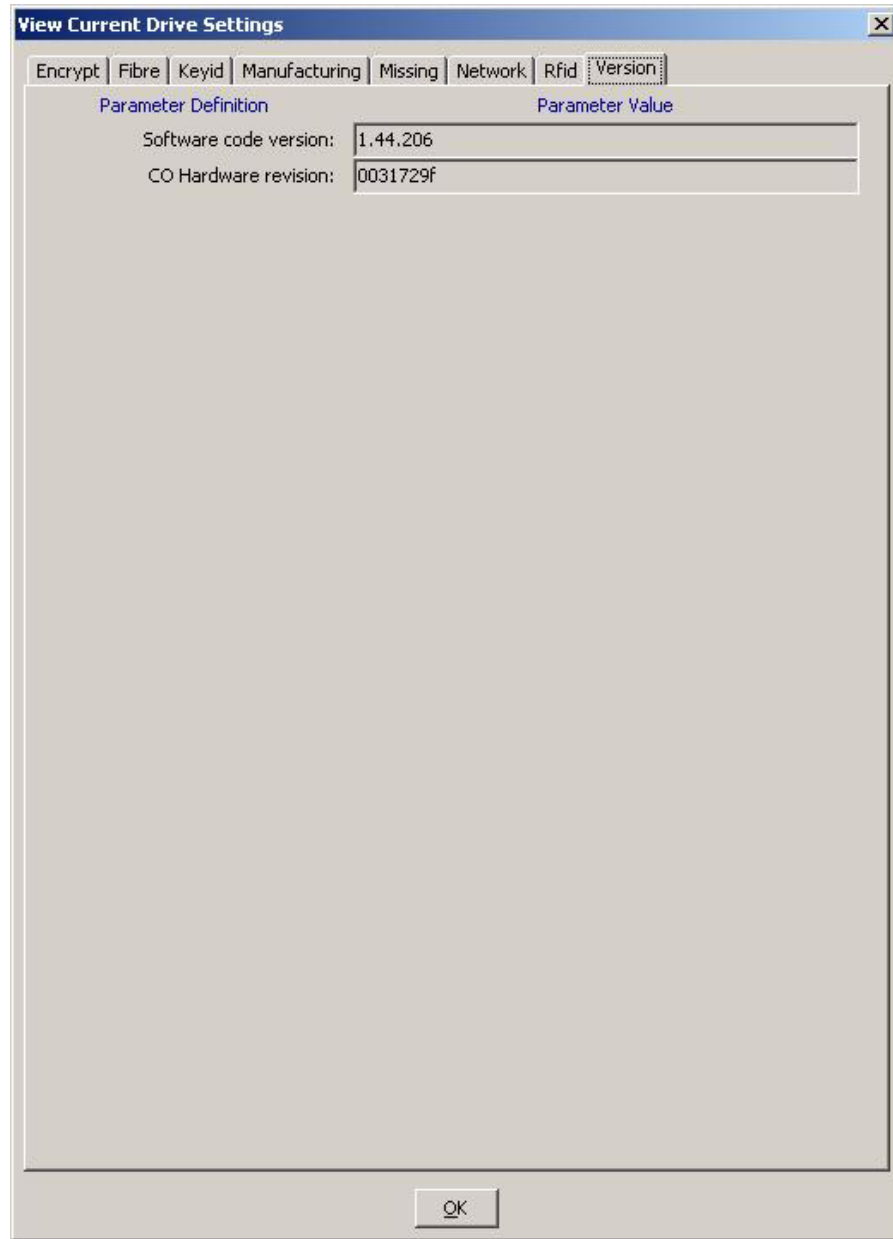
Parameter Definition	Parameter Value
Tape ID zone - cksum:	b8a70b6e
Cartridge serial num:	7050820100482B
Cartridge type:	D
RFID format:	02
Tape cleaner used cnt:	0
Tape expired:	00
Record 1 (0-19):
Record 1 (20-39):
Record 1 (40-59):
Record 1 (60-79):
Record 2 (0-19):
Record 2 (20-39):
Record 2 (40-59):
Record 2 (60-79):
Record 3 (0-19):
Record 3 (20-39):
Record 3 (40-59):
Record 3 (60-79):

OK

Version Property Sheet

The Version tab (FIGURE 4-17) shows the current drive firmware level.

FIGURE 4-17 View Current Drive Settings, Version Tab



▼ To Use the View Date & Time Command

- Choose View Date & Time from the Retrieve menu.

The drive date and time appears in the VOP transcript pane, as shown below.

```
8:55 AM Aug 2, 2007 - VOP LOGGED IN to Drive
8:59 AM Aug 2, 2007 - Tape Drive Clock set to 07/30/2007 11:52:44.670
```

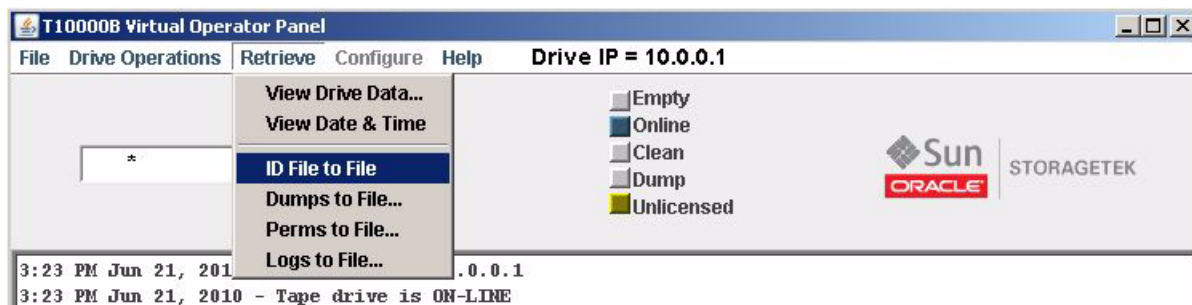
Notice that the drive clock setting is lagging behind the VOP time at the left side of the same text line. The drive clock only operates while the drive is powered; therefore, the drive clock time can fall behind real clock time whenever the drive is not powered.

Most library configurations set the drive clock in-sync with the library clock. However, you can manually set the drive clock when the drive is offline.

Note – See [“To Use the Set Clock Command”](#) on page 95 to change the drive clock setting.

▼ To Use the ID File to File Command

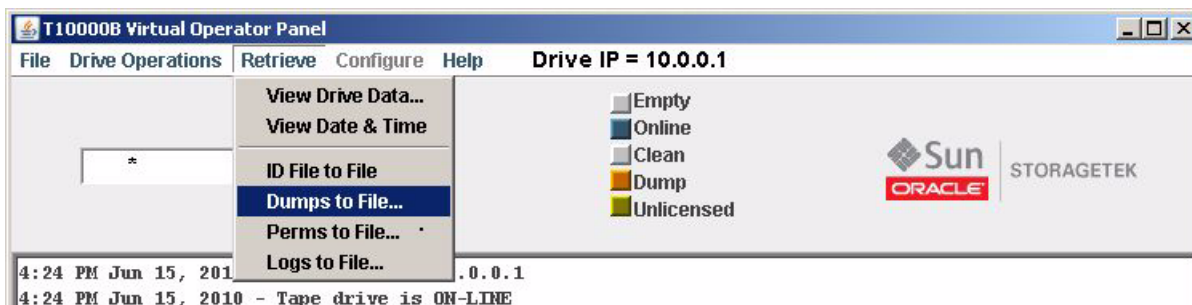
- Choose ID File to File from the Retrieve menu.



The file is saved to the ID folder in the VOP directory.

▼ To Use the Save Dumps to a File Command

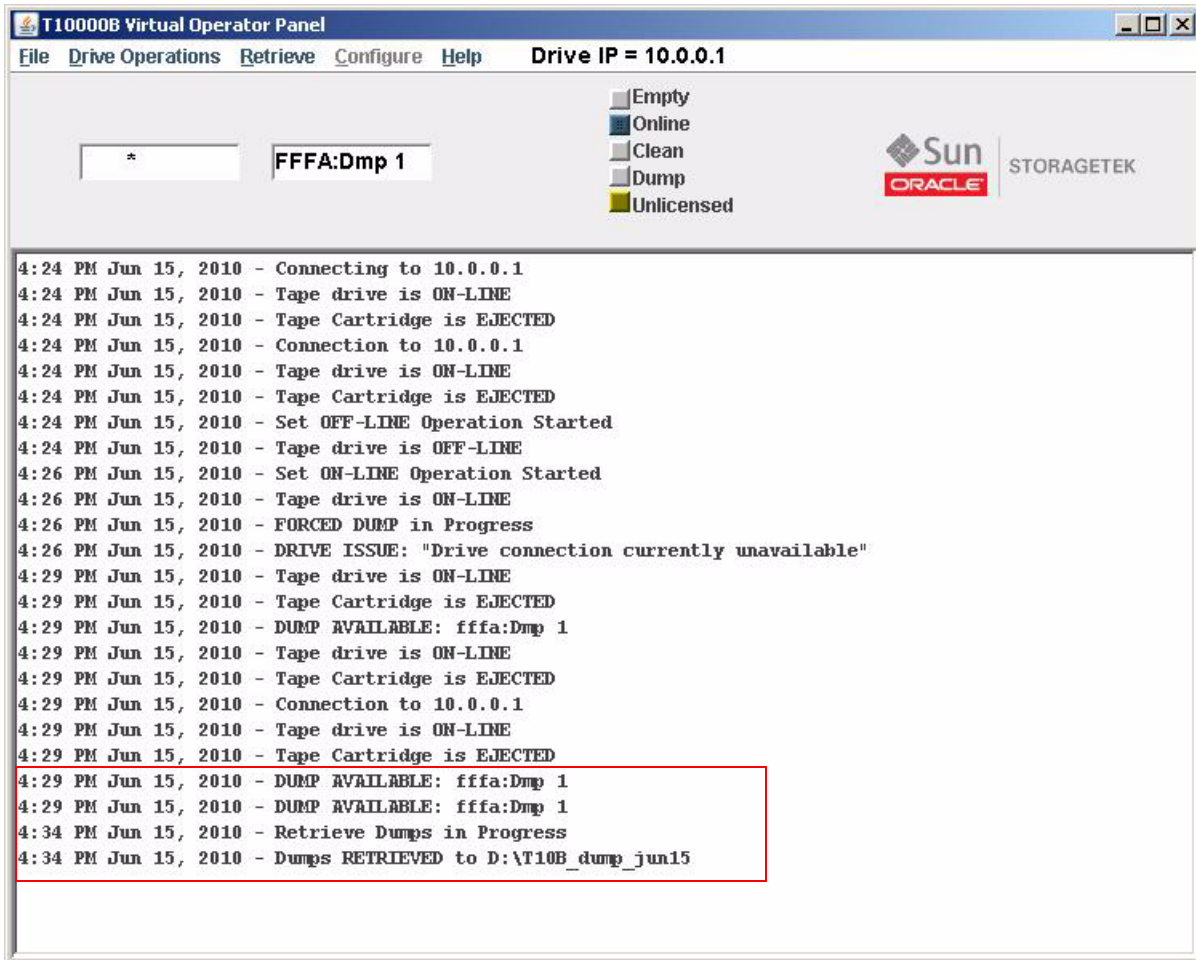
1. Choose Dumps to File from the Retrieve menu.



The save dialog box appears to allow you to name the file and identify where to save it.

2. Name the file, specify the target folder, and click Save.

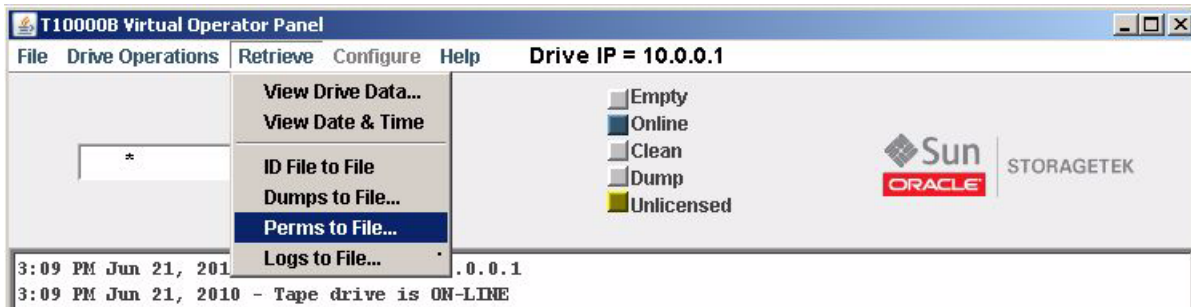
The operating system saves the dump file in the specified location. The VOP transcript (shown below) documents the action, including the path to the file.



Note – The dump indicator dimmed after retrieval of the dump file. However, the dump is still present in drive memory until intentionally deleted by a service representative or until the drive firmware is updated.

▼ To Use the Perms to File Command

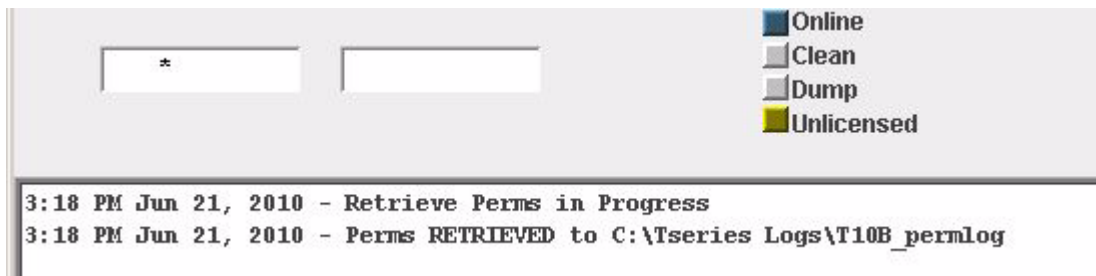
1. Choose Perms to File from the Retrieve menu.



The save dialog box appears to allow you to name the file and identify where to save it.

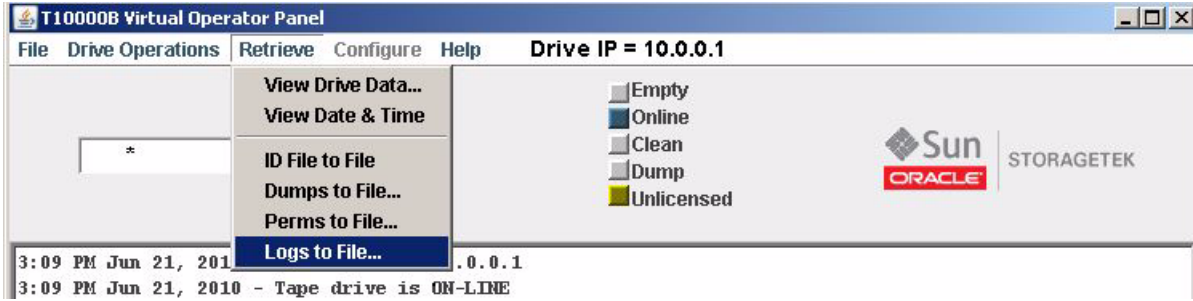
2. Name the file, specify the target folder, and click Save.

The operating system saves the perm file in the specified folder. The VOP transcript (shown below) documents the action, including the path to the file.



▼ To Use the Logs to File Command

1. Choose Logs to File from the Retrieve menu.



The save dialog box appears to allow you to name the file and identify where to save it.

2. Name the file, specify the target folder, and click Save.

The operating system saves the log file in the specified folder. The VOP transcript (shown below) documents the action, including the path to the file.



Configure Menu

Note – The drive must be offline, and should not be available to the host when you exercise the Configure menu commands. Some changes require the drive to perform an Initial Program Load (IPL) to implement configuration changes.

The *offline* Configure menu (FIGURE 4-18) has four commands. You can access the menu by choosing Configure in the menu bar or by using the ALT+C shortcut keys. A description of each command is provided in the following table.

TABLE 4-5 Configure Menu Commands

Command	Description
Drive Data	This command allows you to change configuration settings.
Save Drive Config	This command allows you to save the current drive configuration settings to a file. You can retrieve the saved file to restore configuration settings.
Set Clock	This command allows you to set the drive's internal clock to the current time in your computer.
Firmware Update from Tape	This command allows you to update the drive's firmware to the release level contained on a prerecorded code tape (cartridge).

FIGURE 4-18 Configure Menu



Additional details are provided in the following sections:

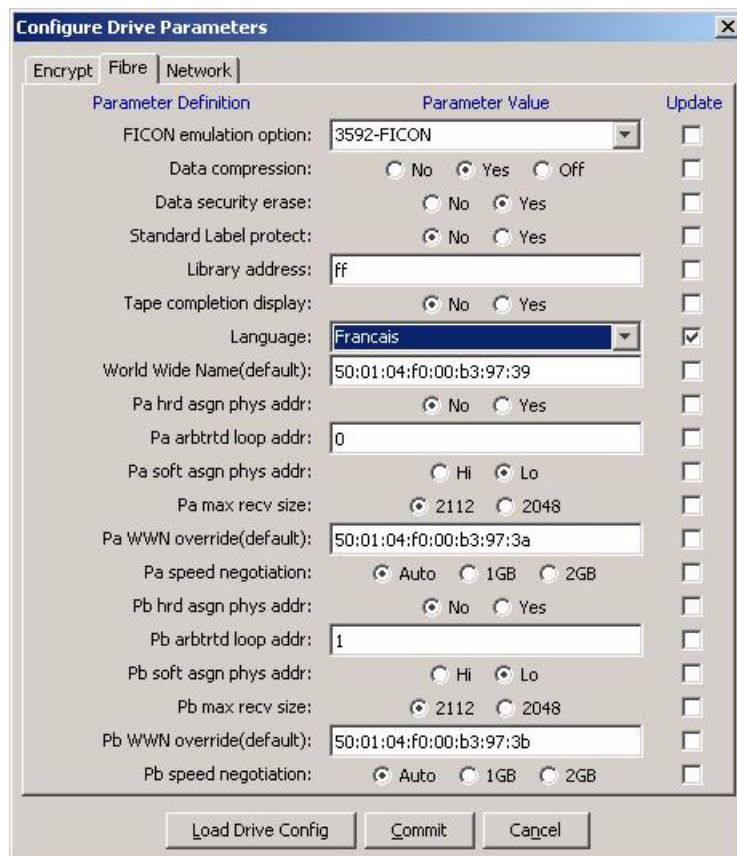
- [“Drive Data Command” on page 76](#)
- [“To Use the Save Drive Config Command” on page 94](#)
- [“To Use the Set Clock Command” on page 95](#)
- [“To Use the Firmware Update from Tape Command” on page 96](#)

Drive Data Command

Note – The current drive parameter settings were selected by the installation team to match pre-determined site requirements. Changing the drive parameter setting could materially affect drive performance. Therefore, you should change drive parameter settings only as instructed by your IT manager or StorageTek Support.

The Drive Data command presents you with the Configure Drive Parameters property sheets to change configuration settings. When you select a property sheet (tab), the current drive parameter values appear. If you change a setting, the adjacent Update checkbox indicates a pending change. Clearing the checkbox cancels the pending change of only that parameter.

The following figure shows the Fibre property sheet with a language change to Francais, and the corresponding check in the Update column.



Notice that there are several selection methods on the property sheets:

- Drop-down list boxes
- Radio buttons
- Text fields

Across the bottom of the Configure Drive Parameters dialog box, there are three command buttons that directly affect drive configuration settings. The buttons are described in the following table.

TABLE 4-6 Configure Drive Parameter Buttons

Button	Description
Load Drive Config	This function allows you to retrieve a previously saved file containing drive configuration parameters/settings. After the retrieved file is opened, all tabs are populated with the saved configuration parameter values/settings. Marked Update checkboxes identify changed parameter values/settings. Note: The imported saved configuration file includes parameters specific to the originating drive. Make sure you clear or reset drive-specific parameters to accurately reflect the drive that imported the saved configuration file. See “To Use the Save Drive Config Command” on page 94 for guidelines on saving a drive configuration.
Commit	Initiates a drive IPL to activate pending changes.
Cancel	Clears any/all pending change selections for all four tabs.

Note – During the commit process, VOP loses connection to the drive when IPL begins. However, VOP automatically reconnects to the drive after a successful IPL.

After the drive completes IPL and VOP reconnects to the drive, you should review the Drive Data tabs in the Retrieve menu to verify the new parameter values/settings (see [“View Drive Data Command” on page 60](#)). If required, place the drive offline and repeat the configuration process.

▼ To Use the Drive Data Command - Manual Entry

1. Choose **Configure** from the menu bar or use the **ALT+C** shortcut keys to open the menu.
2. Choose **Drive Data** from the **Configure** menu or use the **SHIFT+D** shortcut keys.

The multi-tab Configure Drive Parameters property sheet appears.



3. Click the tab for the property sheet that you want to change.

Note – The **Encrypt** property sheet opens for an encryption-capable drive or the **Fibre** property sheet opens for drive that is not encryption-capable.

4. Enter a change on the property sheet.

A check appears in the box in the Update column to the right of your change.

Tip – Repeat this step as necessary to identify additional changes.

5. (Optional) Click the tab for a different property sheet and enter your change(s).

Note – You can use the Cancel button or the ALT+N shortcut keys to cancel all pending changes.

6. Click the Commit button or use the ALT+C shortcut keys.

The drive performs an IPL to implement the identified change(s).

▼ To Use the Drive Data Command - Config File

1. Choose Configure from the menu bar or use the ALT+C shortcut keys to open the menu.

2. Choose Drive Data from the Configure menu or use the SHIFT+D shortcut keys.

The multi-tab Configure Drive Parameters property sheet appears.



3. Use the Load Drive Config button or the ALT+L shortcut keys to import a saved configuration file.



A dialog box appears where you enter the file name and path or use the browse function. The property sheets are populated with data from the retrieved file.

4. (Optional) Remove the check or alter unneeded parameter changes imported from a configuration file.

Tip – Pay particular attention to the drive-specific parameter values on each of the property sheets.

Note – You can use the Cancel button or the ALT+N shortcut keys to cancel the pending changes.

5. Click the Commit button or use the ALT+C shortcut keys.

The drive performs an IPL to implement the identified change(s).

Encrypt Property Sheet

The Encrypt tab contains information about the encryption characteristics of the drive (such as, use of tokens or permanently encrypting) and enrollment information.

FIGURE 4-19 shows the property sheet for a T10000 drive and FIGURE 4-20 on page 80 shows the property sheet for a T9840D drive.

Note – See either the encryption documentation for guidelines on how to use this property sheet or the *T10000 Tape Drive Operator's Guide* for information on using Data Path Key Management (DPKM).

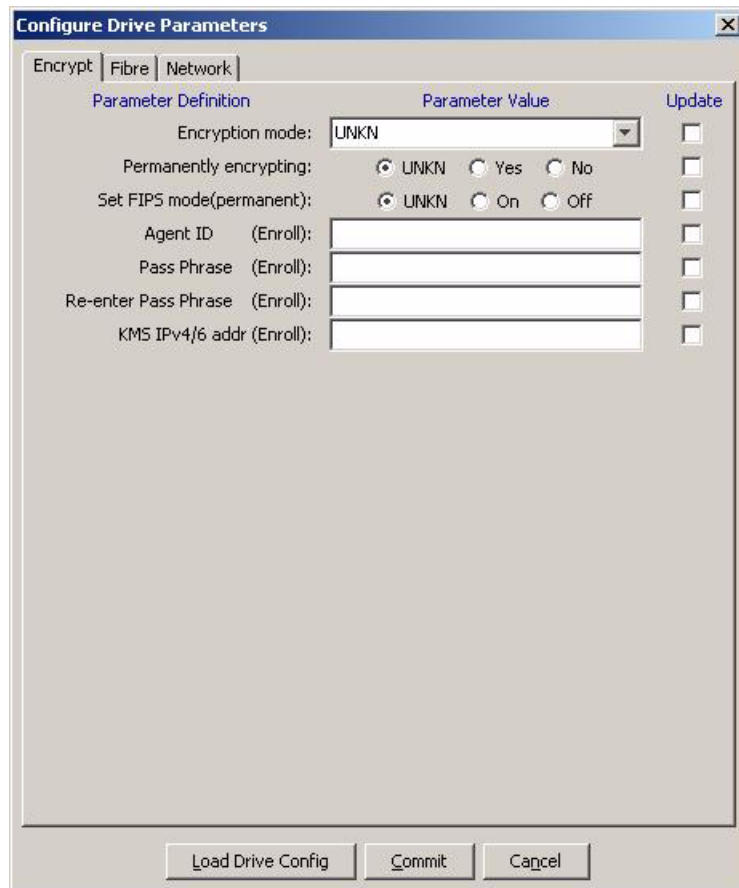
FIGURE 4-19 Configure Drive Parameters, Encrypt Tab T10000 Tape Drive

Parameter Definition	Parameter Value	Update
Use tokens / DPKM:	UNKN	<input type="checkbox"/>
Permanently encrypting:	<input checked="" type="radio"/> UNKN <input type="radio"/> Yes <input type="radio"/> No	<input type="checkbox"/>
Set FIPS mode(permanent):	<input checked="" type="radio"/> UNKN <input type="radio"/> On <input type="radio"/> Off	<input type="checkbox"/>
Agent ID (Enroll):	<input type="text"/>	<input type="checkbox"/>
Pass Phrase (Enroll):	<input type="text"/>	<input type="checkbox"/>
Re-enter Pass Phrase (Enroll):	<input type="text"/>	<input type="checkbox"/>
KMS IPv4/6 addr (Enroll):	<input type="text"/>	<input type="checkbox"/>

Buttons: Load Drive Config, Commit, Cancel

If you want additional information on FIPS aspects of the drive, see the document titled either *T10000A Encrypting Tape Drive Security Policy* or *T10000B Encrypting Tape Drive Security Policy*.

FIGURE 4-20 Configure Drive Parameters, Encrypt Tab T9840D Tape Drive



Fibre Channel Fibre Property Sheet

The Fibre tab (FIGURE 4-21) contains drive Fibre Channel configuration settings for the T10000A tape drive. The parameters are similar for the T10000B or T9840D tape drive.

Notice that there are three different selection methods on the Fibre tab:

- Drop-down list boxes - Emulation, Language, Pa/b max rcv size, and Pa/b speed negotiation.
- Radio buttons - Data compression, Data security erase, Standard Label protect, Tape completion display, Pa/b hrd asgn phys addr, and Pa/b soft asgn phys addr.
- Text fields - Library address and World Wide Name (drive, ports A & B).

Note – See FIGURE 4-22 on page 82 for the FICON Fibre tab.

FIGURE 4-21 Configure Drive Parameters, Fibre Tab (FCP)

Parameter Definition	Parameter Value	Update
Fibre emulation option:	Standard-FIBRE	<input type="checkbox"/>
Data compression:	<input type="radio"/> No <input checked="" type="radio"/> Yes <input type="radio"/> Off	<input type="checkbox"/>
Data security erase:	<input type="radio"/> No <input checked="" type="radio"/> Yes	<input type="checkbox"/>
Standard Label protect:	<input checked="" type="radio"/> No <input type="radio"/> Yes	<input type="checkbox"/>
Library address:	ff	<input type="checkbox"/>
Tape completion display:	<input checked="" type="radio"/> No <input type="radio"/> Yes	<input type="checkbox"/>
Language:	English	<input type="checkbox"/>
World Wide Name(default):	50:01:04:f0:00:b3:97:39	<input type="checkbox"/>
Pa hrd asgn phys addr:	<input checked="" type="radio"/> No <input type="radio"/> Yes	<input type="checkbox"/>
Pa arbtrtd loop addr:	0	<input type="checkbox"/>
Pa soft asgn phys addr:	<input type="radio"/> Hi <input checked="" type="radio"/> Lo	<input type="checkbox"/>
Pa max rcv size:	<input type="radio"/> 2112 <input checked="" type="radio"/> 2048	<input type="checkbox"/>
Pa WWN override(default):	50:01:04:f0:00:b3:97:3a	<input type="checkbox"/>
Pa speed negotiation:	<input checked="" type="radio"/> Auto <input type="radio"/> 1GB <input type="radio"/> 2GB	<input type="checkbox"/>
Pb hrd asgn phys addr:	<input checked="" type="radio"/> No <input type="radio"/> Yes	<input type="checkbox"/>
Pb arbtrtd loop addr:	1	<input type="checkbox"/>
Pb soft asgn phys addr:	<input type="radio"/> Hi <input checked="" type="radio"/> Lo	<input type="checkbox"/>
Pb max rcv size:	<input type="radio"/> 2112 <input checked="" type="radio"/> 2048	<input type="checkbox"/>
Pb WWN override(default):	50:01:04:f0:00:b3:97:3b	<input type="checkbox"/>
Pb speed negotiation:	<input checked="" type="radio"/> Auto <input type="radio"/> 1GB <input type="radio"/> 2GB	<input type="checkbox"/>

Buttons: Load Drive Config, Commit, Cancel

FICON Fibre Property

The FICON Fibre tab for a T10000 tape drive (FIGURE 4-22) or a T9840D tape drive (FIGURE 4-23 on page 83) contains drive FICON configuration settings.

Notice that there are three different selection methods on the Fibre tab:

- Drop-down list boxes - Emulation, Language, Pa/b max rcv size, and Pa/b speed negotiation.
- Radio buttons - Data compression, Data security erase, Standard Label protect, Tape completion display, Pa/b hrd asgn phys addr, and Pa/b soft asgn phys addr.
- Text fields - Library address, and World Wide Name (drive, ports A & B).

Note – See FIGURE 4-21 on page 81 for the FCP Fibre tab.

FIGURE 4-22 Configure Drive Parameters, Fibre Tab (FICON)

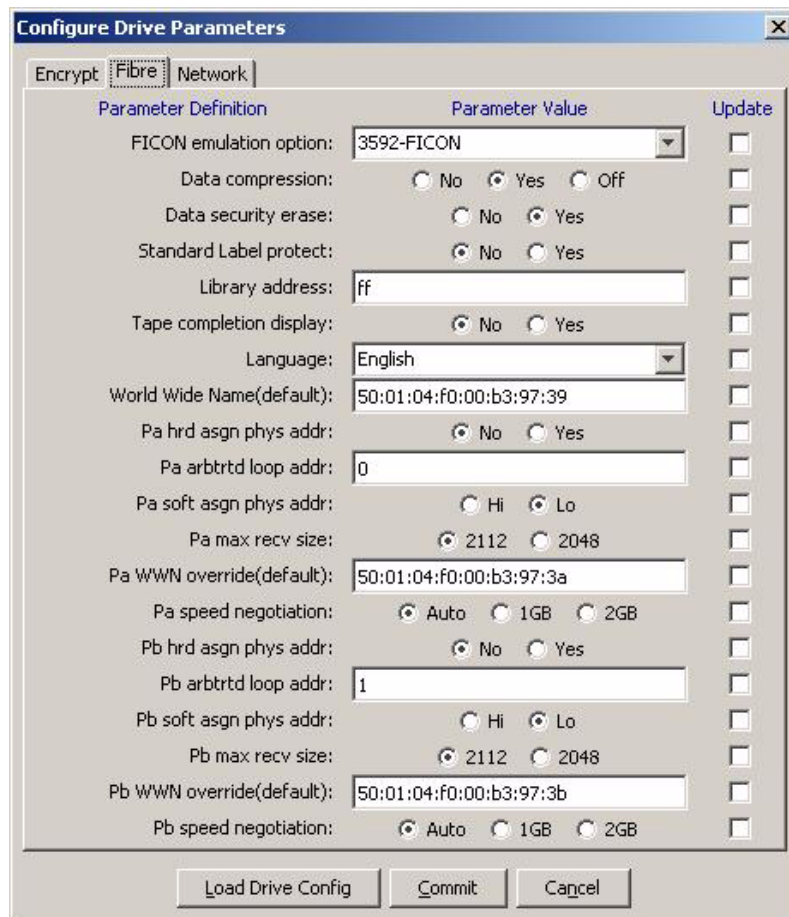


FIGURE 4-23 Configure Drive Parameters, T9840D

Parameter Definition	Parameter Value	Update
FICON emulation option:	3590-FICON	<input type="checkbox"/>
Data compression:	<input type="radio"/> No <input checked="" type="radio"/> Yes <input type="radio"/> Off	<input type="checkbox"/>
Data security erase:	<input type="radio"/> No <input checked="" type="radio"/> Yes	<input type="checkbox"/>
VolSafe enabled:	<input type="radio"/> No <input checked="" type="radio"/> Yes	<input type="checkbox"/>
Save full load:	<input type="radio"/> No <input checked="" type="radio"/> Yes	<input type="checkbox"/>
Standard label protect:	<input checked="" type="radio"/> No <input type="radio"/> Yes	<input type="checkbox"/>
Tape completion display:	<input checked="" type="radio"/> No <input type="radio"/> Yes	<input type="checkbox"/>
CSL power up:	System	<input type="checkbox"/>
Library address:	ff	<input type="checkbox"/>
Language:	English	<input type="checkbox"/>
World Wide Name(library):	50:01:04:f0:00:78:c2:f0	<input type="checkbox"/>
Pa hrd asgn phys addr:	<input checked="" type="radio"/> No <input type="radio"/> Yes	<input type="checkbox"/>
Pa arbtrtd loop addr:	0	<input type="checkbox"/>
Pa soft asgn phys addr:	<input checked="" type="radio"/> Hi <input type="radio"/> Lo	<input type="checkbox"/>
Pa max recv size:	2112	<input type="checkbox"/>
Pa WWN override(library):	50:01:04:f0:00:78:c2:f1	<input type="checkbox"/>
Pb hrd asgn phys addr:	<input checked="" type="radio"/> No <input type="radio"/> Yes	<input type="checkbox"/>
Pb arbtrtd loop addr:	0	<input type="checkbox"/>
Pb soft asgn phys addr:	<input checked="" type="radio"/> Hi <input type="radio"/> Lo	<input type="checkbox"/>
Pb max recv size:	2112	<input type="checkbox"/>
Pb WWN override(library):	50:01:04:f0:00:78:c2:f2	<input type="checkbox"/>

Buttons: Load Drive Config, Commit, Cancel

The following sections provide additional detail for parameter settings.

Note – The current drive parameter settings were selected by the installation team to match predetermined site requirements. Changing the drive parameter setting could materially affect drive performance. Therefore, you should change drive parameter settings only as instructed by your IT manager or StorageTek Support.

Emulation

The available emulation options are specific to the active interface and the tape drive model.

Note – The option list nomenclature or the specific options available might differ from those shown based upon the version of drive microcode.

FIGURE 4-24 shows a representative list of T10000A Fibre Channel options: Standard-FIBRE, 9840B-FIBRE, 9940B-FIBRE, and 3592-FIBRE.

FIGURE 4-24 T10000A Emulation Options - FCP

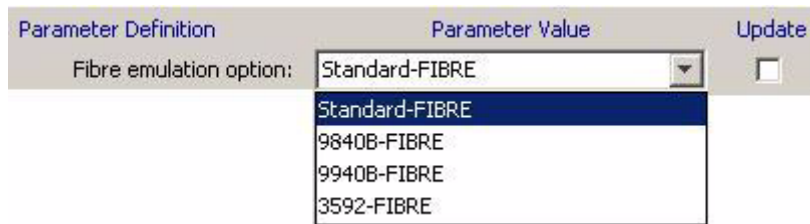


FIGURE 4-25 shows a representative list of T10000A FICON options: VSM3490-FICON and 3592-FICON.

FIGURE 4-25 T10000A Emulation Options - FICON



Note – T9840D emulation options are different.

Data Compression

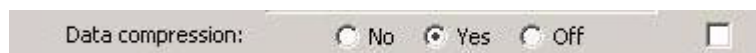
TABLE 4-7 provides a description of the available data compression options.

TABLE 4-7 Data Compression Option Descriptions

Option	Use/Meaning
No	Data is not compressed, by default, but can be overridden by the host for a job.
Yes	Data is compressed, by default, but can be overridden by the host for a job.
Off	Data compression is disabled by default, and cannot be overridden by the host.

Note – Data compression radio buttons are mutually exclusive. The option defaults to the last saved selection. *Yes* is the factory setting.

The following figure shows the data compression options.



Data Security Erase

TABLE 4-8 provides a description of the available data security erase options.

TABLE 4-8 Data Security Erase Option Descriptions

Option	Use/Meaning
Yes	Enables a full data security erase. A random binary pattern is written on the media, over-writing existing data, from the point of an “Erase” command to the End of Tape mark.
No	Writes an end of data mark on the media that indicates valid data does not exist beyond the point of an “Erase” command. Data is actually still present beyond the end of data mark, and it can be retrieved by special tape utilities.

Note – The data security erase radio buttons are mutually exclusive. The option defaults to the last saved selection. *Yes* has been the factory setting since June 2008 (drives manufactured before that date were set to No).

The following figure shows the data security erase options.



Standard Label Protect

TABLE 4-9 provides a description of the available standard label protect options.

TABLE 4-9 Standard Label Protect Options

Option	Use/Meaning
No	Disables standard label protection.
Yes	Enables standard label protection.

Notes:

Consider the following:

1. Select Yes if label overwrite code is loaded, or if running standard labels and wish the drive to display a fatal error (CHK 33EX) when writing a non-80-byte record for VOLSER or HDR1.
2. Select No if you are using NL or NSL tape processing.
3. POST WRCART cannot be run with Yes selected

Note – The standard label protect radio buttons are mutually exclusive. The option defaults to the last saved selection. *No* is the factory setting.

The following figure shows the options.



Library Address

The Library Address is a text field that contains a two-character hexadecimal value that the factory sets to *ff* as shown in the following figure.



Note – The setting should remain at *ff* for all libraries except the 9310 PowderHorn Library. A valid entry for the 9310 is based upon the tape drive position in the 9741/9741E drive cabinet (*00* through *09* [top, down], left column; or *0A* through *13* [top, down] right column) as viewed from the access door of the cabinet.

Tape Completion Display

The Tape completion display provides an indication of tape completion (percentage of tape media with written data) as shown in the following figure.



Note – The view-only tape completion display is superseded by higher priority messages that require use of the secondary window.

When you select No, the tape completion display is disabled.

When you select Yes, the tape completion display appears in the secondary drive message window when there is a cartridge loaded in the drive.

The available options are shown in the following figure.

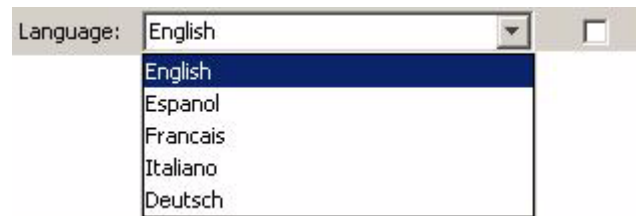


Note – The radio buttons are mutually exclusive. The option defaults to the last saved selection. *No* is the factory setting.

Language

Note – *English* is preset at the factory.

The available language selections are shown in the following figure.



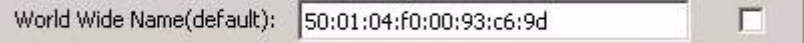
This option sets the language in which certain operational drive messages (such as loading, unloading, etc.) appear in the drive message windows.

World Wide Name

Caution – Indiscriminately changing the WWN could result in the drive being unavailable to the host.

The World Wide Name (WWN) identifies the drive node. This string of 16 hexadecimal characters (FIGURE 4-26) represents a 64-bit, unique identifier that distinguishes the individual drive from all other devices worldwide. Characters 2 through 6 identify the specific manufacturer. StorageTek branded devices have the company ID “00104F”. Other characters reveal additional drive-specific information.

FIGURE 4-26 World Wide Name Text Field



World Wide Name(default): 50:01:04:f0:00:93:c6:9d

Note – When a customized WWN is active, ‘(custom)’ appears in the label.

Manufacturing assigns a block of three WWNs (from a pool of company-specific WWNs) to each tape drive during the manufacturing process. One for the drive and one each for the two fiber-optic interface ports. The drive node is assigned the first WWN of the block, and the next two WWNs, in sequence, are assigned to the ports. Notice the last two characters in FIGURE 4-26 are 9d. If you refer back to the entire fibre tab (FIGURE 4-21 on page 81, FCP or FIGURE 4-22 on page 82, FICON) the port A WWN ends with 9e, and the port B WWN ends with 9f. In addition, the (*default*) indicates that this WWN was preset at the factory.

Certain libraries override the default WWN with a library-assigned dynamic WWN (dWWN). Typically, only the last four characters differ from the default WWN. When dWWNs are active, (*library*) appears in the label.

You can also manually override the WWN with a custom WWN. In some circumstances, a service representative might customize a replacement drive’s WWN to be the same as the replaced, defective drive’s WWN. This precludes a requirement for a full system reset to acknowledge a new WWN.

Note – If you apply a custom WWN to the drive node, custom WWNs must also be applied to the interface ports.

Attributes of Interface Ports

Note – Port physical address attributes are only used when the drive is in an arbitrated-loop. The settings are not applicable when the drive is in an interface fabric.

There are two identical interface port attribute groups (FIGURE 4-27):

Tip – Pa = Port A, Pb = Port B

FIGURE 4-27 Interface Port Attributes

World Wide Name(default): 50:01:04:f0:00:b3:97:39

Pa hrd asgn phys addr: No Yes

Pa arbitrd loop addr: 0

Pa soft asgn phys addr: Hi Lo

Pa max rcv size: 2112 2048

Pa WWN override(default): 50:01:04:f0:00:b3:97:3a

Pa speed negotiation: Auto 1GB 2GB

Pb hrd asgn phys addr: No Yes

Pb arbitrd loop addr: 1

Pb soft asgn phys addr: Hi Lo

Pb max rcv size: 2112 2048

Pb WWN override(default): 50:01:04:f0:00:b3:97:3b

Pb speed negotiation: Auto 1GB 2GB

Hard-assigned Physical Address (No/Yes)

When Yes is selected, the drive uses a specified hard physical address (PA).
When No (factory-preset default) is selected, the drive seeks a soft PA.

Arbitrated Loop Address (loop ID)

This entry (0 - 125) specifies the loop ID when the Hard PA selection is Yes.
Factory-preset defaults are: 0 for Port A, 1 for Port B.

Soft-assigned Physical Address (Hi/Lo)

Soft PA is valid when the Hard PA selection is No.
When Soft PA is Hi, the drive seeks an available loop ID in a descending order.
When Soft PA is Lo (factory-preset default), the drive seeks an available loop ID in a descending order.

Maximum Receive Size



Caution – POTENTIAL DRIVE DAMAGE. Older versions of VOP display several size options. The smaller size options are not valid with the T10000 drive. Furthermore, an attempt to switch to any setting other than 2112 or 2048, could cause the drive to fail to complete the IPL. **DO NOT SELECT A SIZE OPTION OTHER THAN 2112 or 2048.**

The maximum receive (max rcv) size value, shown in the following figure, determines the maximum data frame size for data processing.

Pa max rcv size: 2112 2048

The radio buttons are mutually exclusive. The option defaults to the last saved selection.

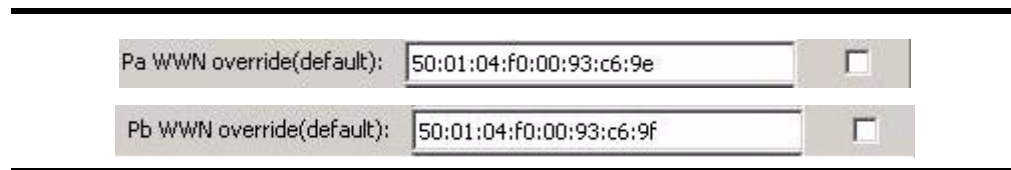
Note – 2112 is the factory setting. Do not change the value unless directed by your IT manager or StorageTek Support.

▼ To Enable the Port World Wide Name Override

Each port has a unique WWN (see [FIGURE 4-28](#)) that you can override. See “World Wide Name” on page 88 for additional information/detail.

Note – If you apply a custom WWN to the drive node, you must also apply custom WWNs to the interface ports.

FIGURE 4-28 Port World Wide Name Text Fields



Note – When a customized WWN is active, (*custom*) appears in the label.

Speed Negotiation

Note – Do not change the speed setting unless directed by your IT manager or StorageTek Support.

The Speed Negotiation options depend on the capability of the interface transceiver present in the drive. The following figure shows the options available for a 4 Gbit drive.



- When you select Auto, the drive operates at the negotiated interface speed, which is typically determined by the slowest attached device. Auto is preset at the factory.
- When you select a fixed rate, the drive only operates at the specified speed and might cause the drive to be unavailable, unless all other interface devices are set to the same speed.

Network Property Sheet

The Network tab ([FIGURE 4-29](#)) provides network related options. When you select the Network tab, the current settings appear. The information in the following figure is from a T10000 tape drive. The parameter list in the dialog box can vary based upon the VOP version and the drive microcode level.

FIGURE 4-29 Configure Drive Parameters, Network Tab

Parameter Definition	Parameter Value	Update
IPv4 address:	010.000.000.001	<input type="checkbox"/>
Subnet mask:	255.255.255.000	<input type="checkbox"/>
Gateway:	255.255.255.255	<input type="checkbox"/>
IPv6 static address:		<input type="checkbox"/>
Network node name:	T10000-001000183	<input type="checkbox"/>

Buttons: Load Drive Config, Commit, Cancel

Note – The entries shown in [FIGURE 4-29](#) are preset at the factory, and they should only be changed at the direction of your IT manager.

The dialog box for the T9840D tape drive is similar, but instead of the Network node name parameter there are two parameters (MIM host IP address and MIM file path).

▼ To Set a Drive Static IPv4 Address

Note – If your drive is monitored by a Service Delivery Platform (SDP), the SDP incorporates a dynamic host control protocol (DHCP) server that assigns a dynamic IP address to the drive.

You cannot directly connect the customer VOP to drives monitored by an SDP.

The parameters shown in the following table determine the static IPv4 addressing for the drive. Each parameter has four 3-digit groups, factory preset to the value shown in the table.

Parameter	Factory Preset	Valid Entries
IP address	010.000.000.001	000 - 255 (each 3-digit group)
Subnet mask	255.255.255.000	000 - 255 (each 3-digit group)
Gateway	000.000.000.000 or 255.255.255.255	000 - 255 (each 3-digit group)

For drives not monitored by an SDP, use the following procedure to edit the static IP address fields:

1. **Overwrite the IP address digits with the specified new digits.**
A check mark appears in the Update checkbox.
2. **Overwrite the Subnet mask digits with the specified new digits.**
3. **Overwrite the Gateway digits with the specified new digits.**
4. **Click Commit, at the bottom of the dialog box.**

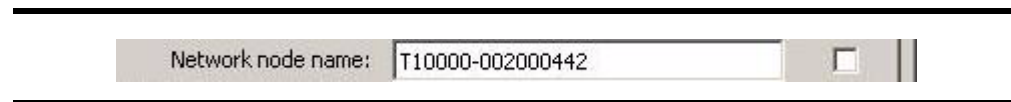
Commit initiates a drive IPL to implement the changed configuration settings. You should click Commit only after completing all drive parameter setting changes.

Note – If you want use VOP with this drive, you must use the Connect to Drive process and specify the new IP address (see [“To Use the Connect to Drive Command” on page 50](#)).

▼ To Set the Network Node Name

This text field (FIGURE 4-30) determines the network node name for the T10000 tape drive.

FIGURE 4-30 Node Name



Note – The factory preset default is: t10000 - <last nine digits of drive serial number>.

To set a different network node name:

1. **Overwrite the appropriate characters with the specified new characters.**

A check mark appears in the Update checkbox.

Note – The factory preset network node name should only be changed by specific instructions from your IT manager, or StorageTek Support.

If you use a saved configuration file (from a different drive) to change settings, clear the update check box. Otherwise, the network node name will change, which could negatively impact network operations.

2. **Click Commit, at the bottom of the dialog box, if you do not have other changes. Otherwise, go to another section to select additional changes.**

Note – Commit initiates a drive IPL to affect changed configuration settings. You should click Commit only after completing all drive parameter settings for change.

▼ To Use the Save Drive Config Command

1. Create a folder to store the drive configuration file.
2. Make sure the drive is offline.

If the drive is not offline, set it offline.

Note – The Configure label must be blue to allow menu selections.

3. Choose Save Drive Config in the Configure menu.



A typical operating system SaveAs dialog box opens.

4. Name the new file, specify the target folder, and click Save.

Tip – Use a file name that differentiates it from similar files or overwrite an existing file.

The operating system saves the configuration file in the specified location. You can retrieve it with the Load Drive Config command button, [on page 76](#).

▼ To Use the Set Clock Command

1. Make sure the drive is offline.

If the drive is not offline, set it offline.

Tip – The Configure label must be blue to allow menu selections.

2. Choose Set Clock from the Configure menu.



The drive internal clock is set to your computer's clock as shown by a message in the transcript pane.

```

8:59 AM Aug 2, 2007 - Tape Drive Clock set to 07/30/2007 11:52:44.670
9:00 AM Aug 2, 2007 - Set OFF-LINE Operation Started
9:00 AM Aug 2, 2007 - Tape drive is OFF-LINE
9:01 AM Aug 2, 2007 - Clock Set To 08/02/2007 09:01:27
  
```

▼ To Use the Firmware Update from Tape Command

Note – You need a code tape to complete this command (see Make Code Tape in [TABLE 4-3 on page 56](#)).

The following procedure describes loading code in a T10000 tape drive. The process is similar for a T9840D drive but there are some noticeable differences.

1. Make sure the drive is offline.

If the drive is not offline, set it offline.

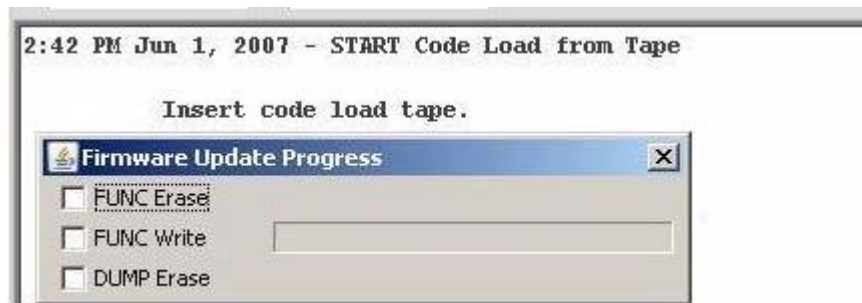
Note – The Configure label must be blue to allow menu selections.

2. Choose Configure from the menu bar or use the ALT+C shortcut keys to open the menu.

3. Choose Firmware Update from Tape in the Configure menu.



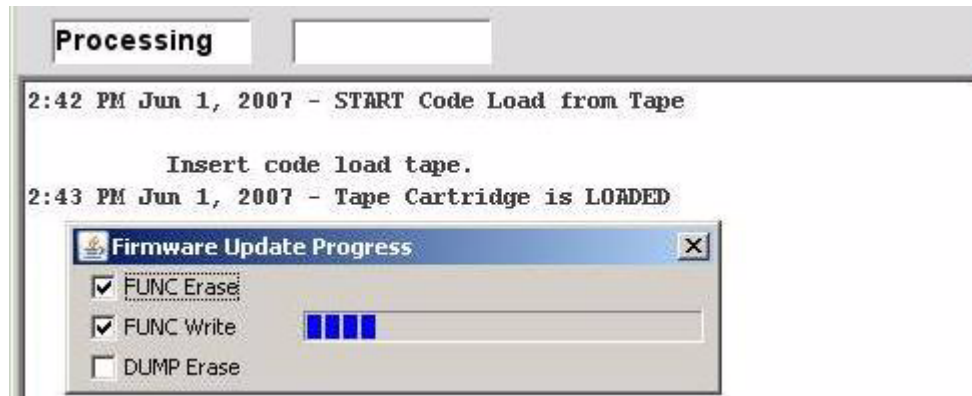
A text prompt to insert a code tape appears in the VOP text message pane, and a Firmware Update Progress box appears (see below).



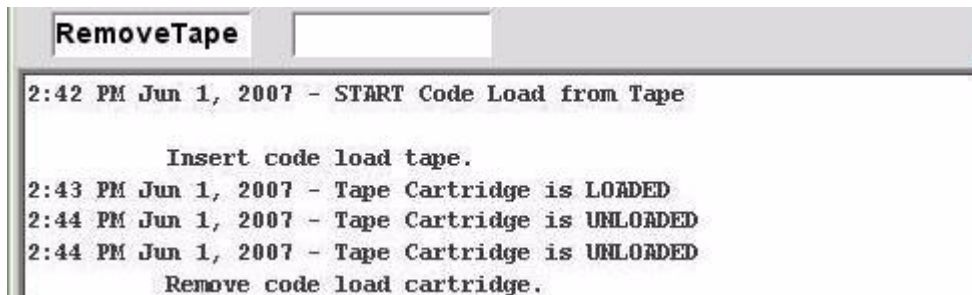
Note – The progress box has a different appearance when loading code in the T9840D tape drive.

4. Insert the code tape/cartridge containing the proper firmware release level.

The Firmware Update Progress box (below) tracks the update.



When the firmware update is completely loaded into the drive memory, the progress box disappears, the code tape/cartridge unloads, and a prompt to remove the cartridge appears in the VOP text message pane (see below).



5. Remove the code load cartridge from the drive load slot.

When the cartridge clears the drive load slot, a drive IPL starts, which will load/activate the updated firmware level into the drive RAM.

Note – VOP loses connection to drive during IPL, but automatically reconnects after IPL completes successfully.

6. View the Drive Data Version tab to verify the updated firmware level.

See [FIGURE 4-17 "View Current Drive Settings, Version Tab"](#) on page 70

Help Menu

The Help menu has a command that displays information about the virtual operator panel and a command to access the Fault Symptom Code dictionaries.

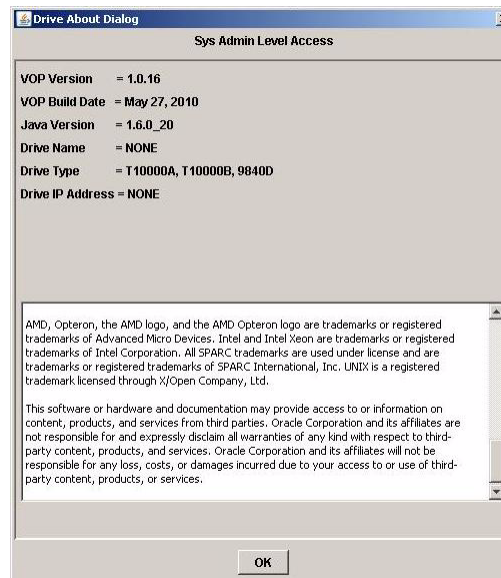


▼ To Use the About Command

1. Choose **About** from the **Help** menu or use the **SHIFT+A** shortcut keys.

The Drive About Dialog box (FIGURE 4-31) lists information about the VOP application, Java version, lists the drive name and IP address (if connected to a drive), and with version 1.0.16 lists the copyright and trademark information.

FIGURE 4-31 About Dialog Box



2. Click **OK** or use the **ALT+O** shortcut keys to close the dialog box.

You can also click the X in the upper-right corner of the dialog box.

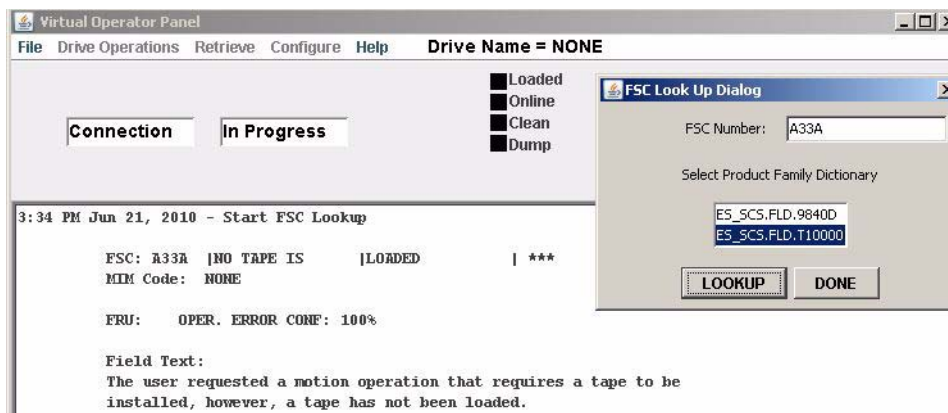
▼ To Use the Fault Symptom Code (FSC) Dictionary

VOP version 1.0.15, or higher, includes the FSC Dictionary command in the Help menu.

1. Enter the four character FSC.
2. Select the tape drive model.
3. Click the Lookup button.

The description of the FSC appears in the transcript pane.

The dialog box and transcript pane are shown in the following figure.



Note – The FSC Dictionary is available with or without a drive connection.

VOP Operation - LTO

This chapter provides guidelines for operation of the Virtual Operator Panel (VOP) with a single LTO Ultrium tape drive (LTO-4 and LTO-5 are supported). The VOP does not provide any interconnection with the host data input/output interface.

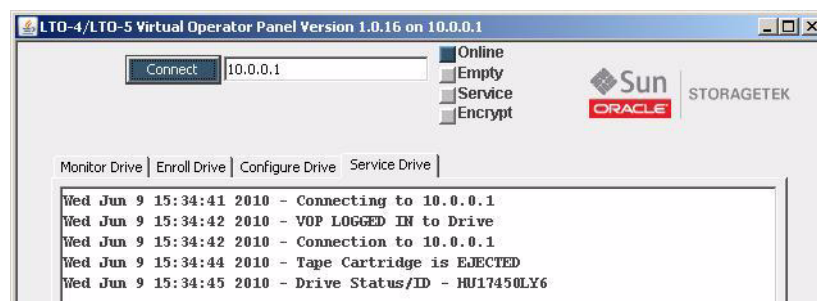
The VOP application window has three basic operational functions:

- Monitor drive status
- View or change drive configuration settings
- Perform drive service tasks

Use ItoVOP Controls

The ItoVOP graphical user interface (GUI) shown in the figure below provides a menu for window control (see [FIGURE 1-3 on page 20](#)), the Connect button, a series of status indicators, and several tabs. During the course of selected operations, the VOP text message pane located on the Service Drive tab displays a transcript of the VOP actions and prompts for additional input.

FIGURE 5-1 ItoVOP Graphical User Interface



The status indicators show the current drive state. The indicators in the figure above have the following meanings:

- Online status indicator is dark blue - the Ethernet adapter card is online
- Empty status indicator is grey - no cartridge is loaded in the drive

- Service status indicator is grey - shows that the Ethernet card is communicating with the tape drive
- Encryption status indicator is grey - the drive is not enrolled

Some status indicators are also an active link that enables you to toggle the state of the monitored drive item. Note that the mouse cursor does not change when you place the cursor on that type of indicator.

The GUI provides tooltips that appear when you move the cursor to selected areas on the window. The figure below shows the tooltip for the first status indicator (Online). The tooltip indicates that the tape drive is online. Use a tooltip to display the meaning of a status indicator.



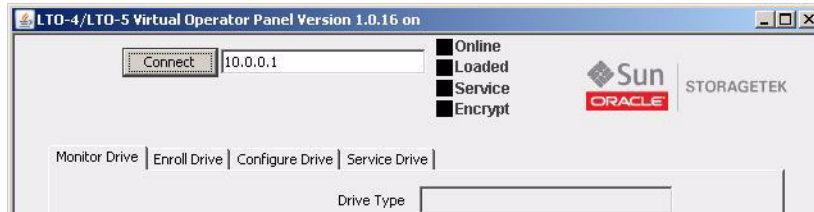
When you load a cartridge in the drive, the cartridge status indicator (the second indicator) color changes to dark blue and the label shows Loaded. In addition, the Media Type value appears in the Monitor Drive tab (the example below indicates an LTO3-formatted cartridge).



VOP to Drive Connection

Note – It is assumed that you have a physical connection between your processing platform and the Ethernet port on the tape drive and that you have started VOP (see [“VOP Application for LTO Tape Drives” on page 43](#)).

When VOP is not communicating with the tape drive, the IP address is missing from the title bar, the Connect button is grey, and the four indicators to the left of the StorageTek logo are black as shown in the figure below.



▼ To Connect VOP to the Drive

1. Enter the IP address of the tape drive Ethernet port in the white box beside the Connect button.

Tip – The factory sets the address to 10.0.0.1.

2. Click the Connect button.

The IP address appears in the title bar, the Connect button color is blue, the indicator color is no longer black, and data appears in the Monitor Drive tab (see the figure below). In addition, transcript messages appear in the Service Drive tab (see [FIGURE 5-1 on page 101](#) for an example).



Drive Online/Offline Status

To perform some operations from VOP, the drive must be offline. You can use the toggle function of the first status indicator or the Set Online/Offline button located in either the Enroll Drive or Configure Drive tabs.

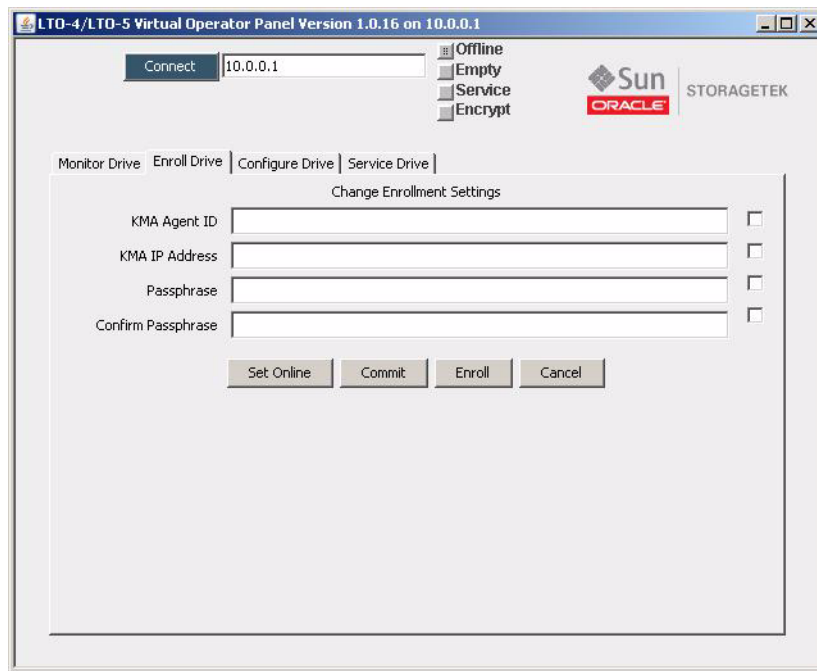
▼ To Change Drive Status to Offline

1. **Determine the current drive state.**
If the drive is Online (see the first status indicator in [FIGURE 5-1 on page 101](#)), proceed with the next step. If the drive is Offline, stop.
2. **Change the drive state to Offline by using one of the following instructions:**

- a. Click the first status indicator.
 - b. Click the **Enroll Drive** tab and click the **Set Offline** button.
See [FIGURE 5-5 on page 107](#) for the location of the button.
 - c. Click the **Configure Drive** tab and click the **Set Offline** button.
See [FIGURE 5-6 on page 109](#) for the location of the button.
3. Verify that the drive status indicator is **Offline**

The figure below shows that the first status indicator is grey and the label states offline. In addition, the button label in the Enroll Drive tab states **Set Online**.

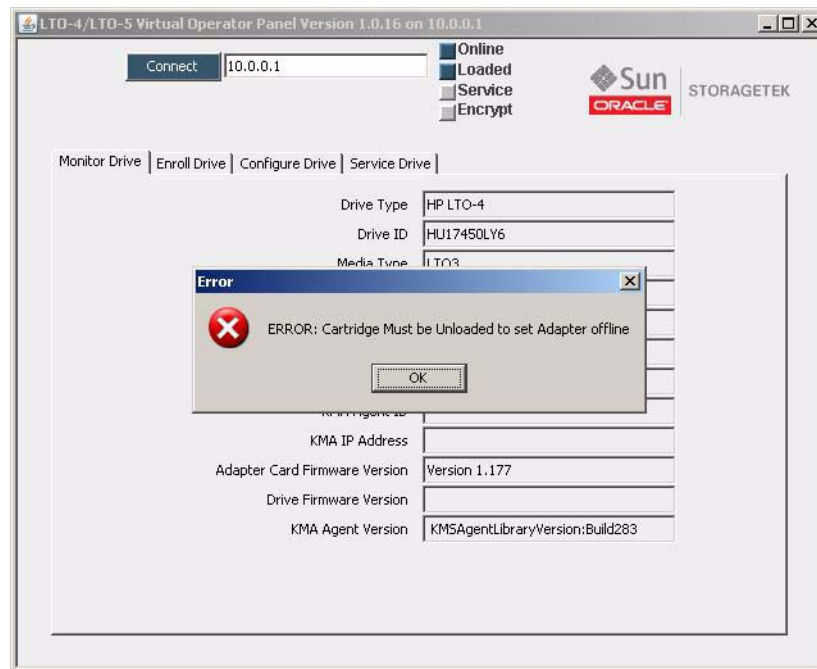
FIGURE 5-2 Set Online Button



Error Messages

Certain actions from the GUI result in error conditions. For example, an error occurs if you attempt to place the drive (adapter card) offline while a tape cartridge is loaded. The following figure shows the resulting error message.

FIGURE 5-3 Error Message

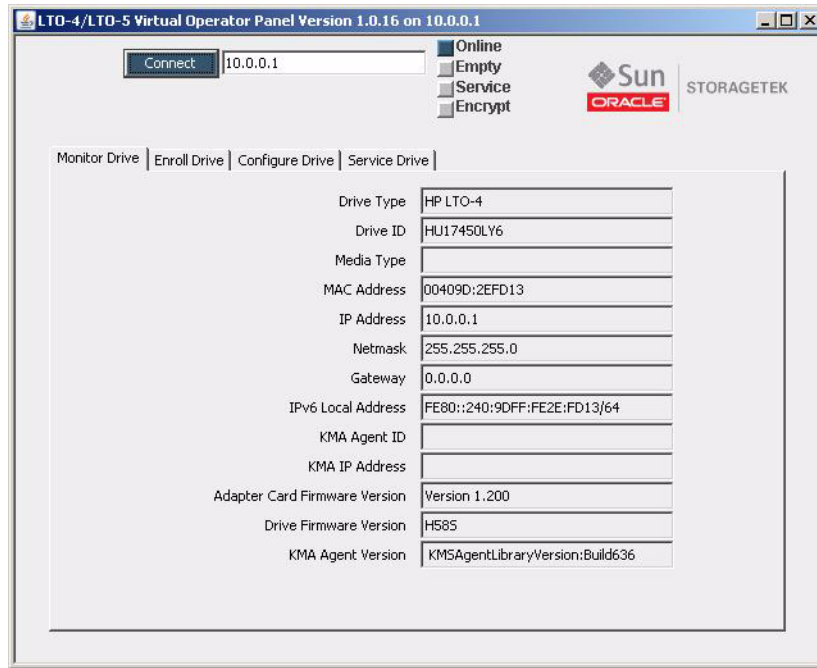


Read and understand the error message before clicking the OK button.

Monitor Drive

Click the Monitor Drive tab (see the figure below) to display a list of drive, cartridge, and Key Management Station agent attributes and values for those attributes. Some attributes require another action, such as drive enrollment for encryption, before the associated data appears.

FIGURE 5-4 Monitor Drive

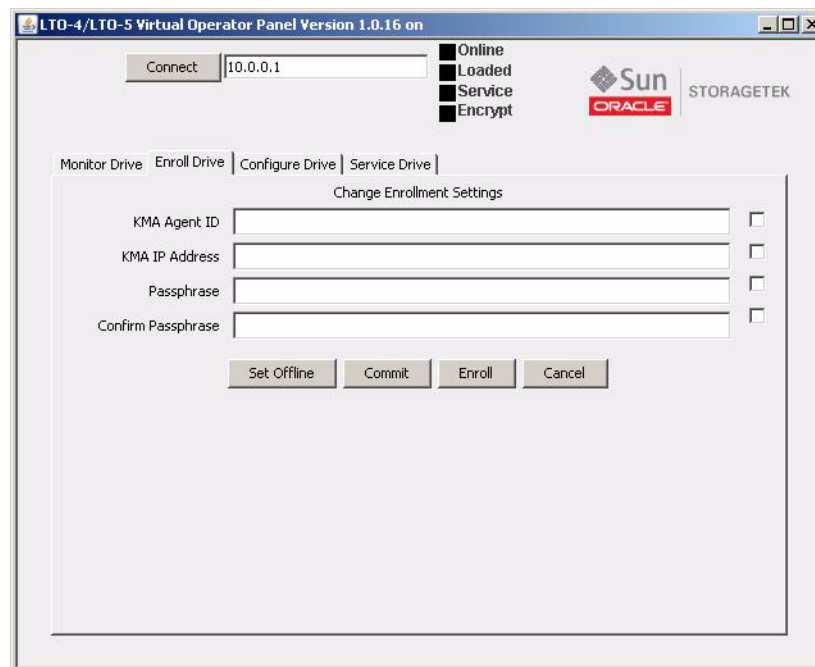


Enroll Drive

Note – Refer to the encryption documentation before using this screen. The sequence for using the Configure Drive and Enroll Drive tabs is critical to success.

The Enroll Drive tab contains a Change Enrollment Settings section and four buttons.

FIGURE 5-5 Enroll Drive



Enter a value in the text field to change an enrollment parameter setting. A check mark appears in the checkbox to the right of the text field. If you decide against an entered change, uncheck the box and the commit operation ignores that value.

This process actually enrolls the adapter card instead of the LTO4 tape drive. If a service representative replaces the tape drive, no re-enrollment is necessary.

The agent must have already been created with a pass phrase assigned in the Crypto Key Management System (KMS) before you can enroll the drive. The KMS must be able to communicate with the adapter card and tape drive.

The KMA IP address must be a *service network* address.

- Set Offline - click this button to set the drive offline.

Note – The label on this button changes depending on the current drive state (for example the label is Set Offline when the drive state is Online).

- Commit - saves the enrollment parameter changes in NVRAM. (The Ethernet card does not reboot if you only change the enrollment settings.)

Note – Only those fields with an active check box are updated when you click the Commit button.

- Enroll - performs drive enrollment after committing the enrollment settings.
- Cancel - clears all pending change selections.

Configure Drive

Note – Refer to the encryption documentation before using this screen. The sequence for using the Configure Drive and Enroll Drive tabs is critical to success.

The Configure Drive panel contains a Change IP Settings section and three buttons (see [FIGURE 5-6 on page 109](#)). This panel is typically used by the service representative to configure the drive to use settings other than those set during the manufacturing process.

Enter a value in the text field to change an IP parameter setting. A check mark appears in the checkbox to the right of the text field. If you decide against an entered change, uncheck the box and the commit operation will ignore that value.

- Set Offline - click this button to set the tape drive (adapter card) offline.

Note – The label on this button changes depending on the current drive state (for example, the label is **Set Offline** when the drive state is **Online**).

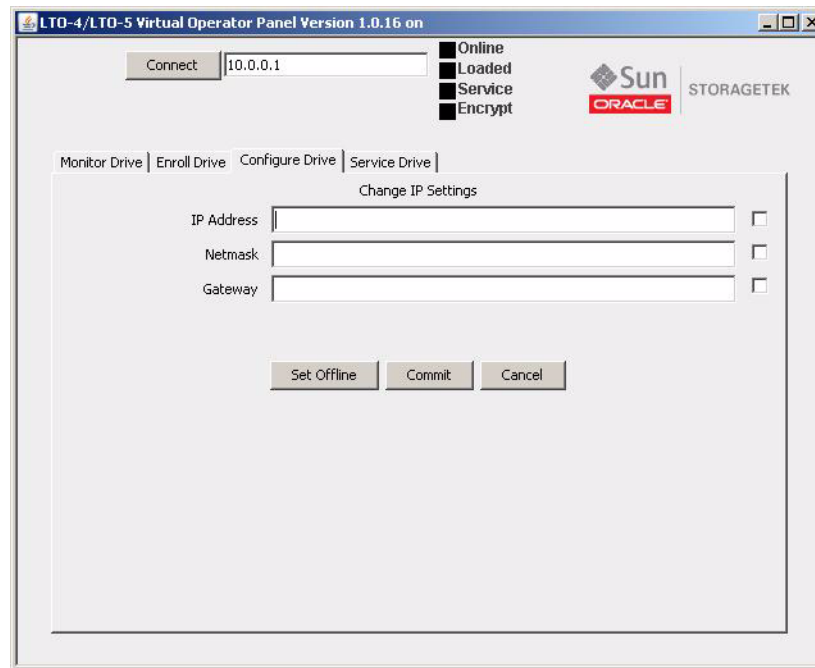
- Commit - saves the desired IP change in NVRAM (the Ethernet card does a reboot when you change an IP setting).

Note – Only those fields with an active check box are updated when you click the Commit button.

When the IPL completes, the *new* IP address is in use. Depending on the IP address, you might need to make a similar IP address change for the device running VOP.

- Cancel - clears all pending change selections.

FIGURE 5-6 Configure Drive



Service Drive

The Service Drive panel contains a text-based transcript area and seven buttons (see [FIGURE 5-7 on page 110](#)).

- Support Logs - saves the log files with the name you enter and your specified location.
- Clear Transcript - erases the content from the text pane.
- IPL - performs an initial program load of the Ethernet card.
- Run Loopback Test - performs an internal loopback test with the LTO-4 drive. Results are posted in the text pane.
- Load Firmware - implements the Ethernet card firmware update procedure. You are prompted to identify the directory that contains the Ethernet card firmware files.
- Adapter Dump - saves the Ethernet card log file with the name you enter and your specified location.
- About - provides information about the VOP version, basic drive information, and with version 1.0.16 the copyright and trademark information is provided (see [FIGURE 5-8 on page 111](#)).

Note – Most of the functions on the Service Drive tab are for use by the service representative. Refer to the encryption documentation for additional information regarding the use of this screen.

FIGURE 5-7 Service Drive

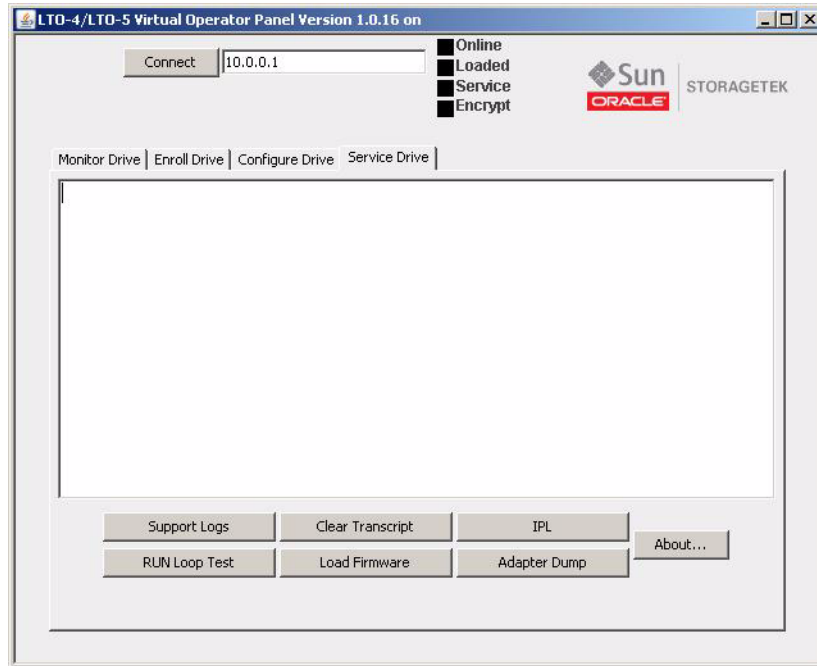
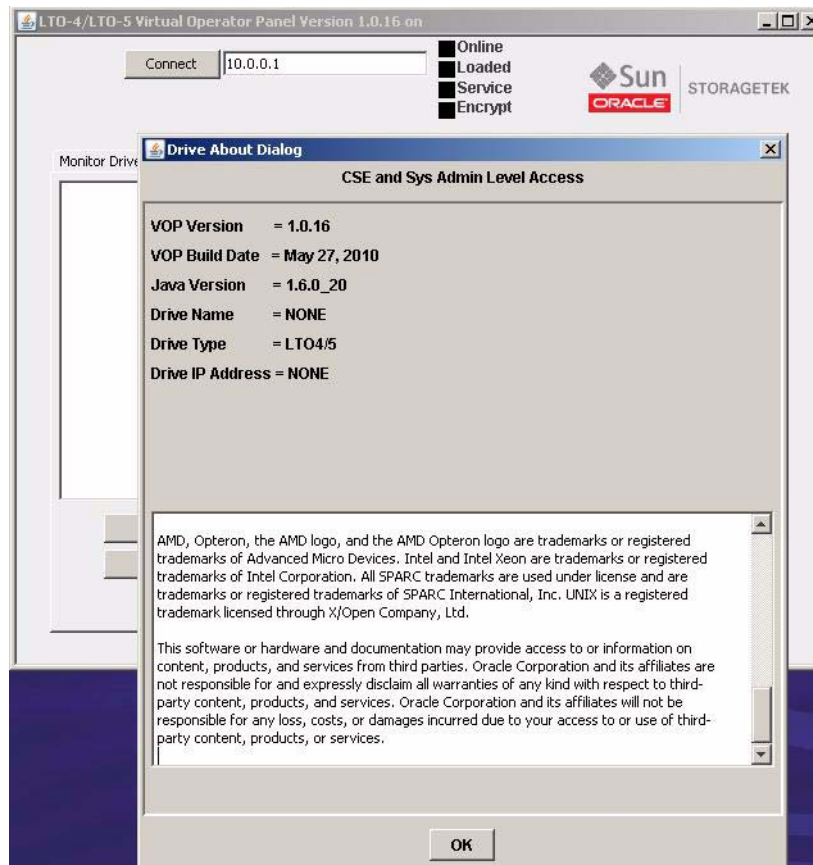


FIGURE 5-8 About LTO Virtual Operator Panel



Changing the Computer IPv4 Address

This appendix provides guidelines to set a static IPv4 address required to connect to the drive, and to reset a single Ethernet port for obtaining a dynamic IP address.

Note – If your computer has two or more Ethernet ports, you can dedicate one for static IP addressing and leave the one used to connect to the LAN set for dynamic IP.

Static IPv4 Address

To connect VOP to a T10000 tape drive that has a static IPv4 address, you must make sure your computer has a functional Ethernet port with compatible static IPv4 address.

Note – See your system administrator for Linux/UNIX operating systems.

▼ Setting static IP, Windows OS

Use the following procedure to check or set a static IP address for your computer:

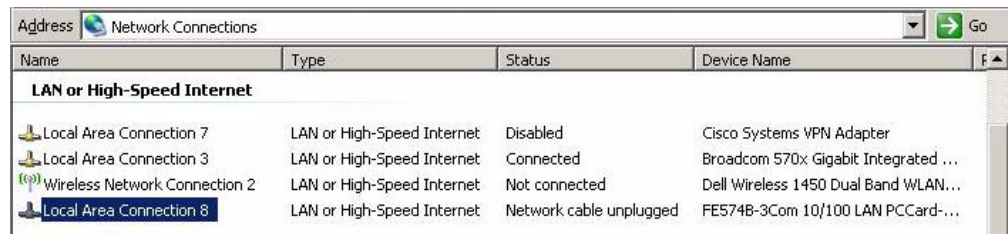
1. Click **Start**, then select **Settings > Network Connections**. (FIGURE A-1).

FIGURE A-1 Network Connections Selection



The Network Connections window (FIGURE A-2) lists all network connections.

FIGURE A-2 Network Connections Window

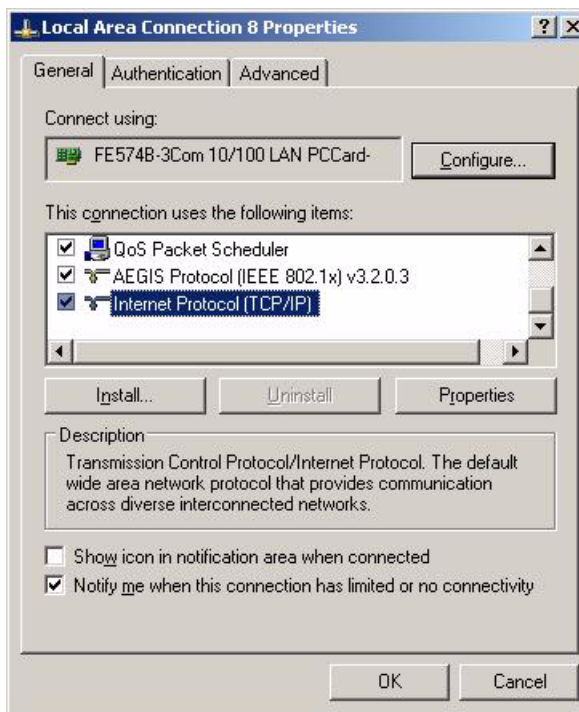


2. Double-click the appropriate connection.

The Local Area Connection Properties dialog box (FIGURE A-3) opens.

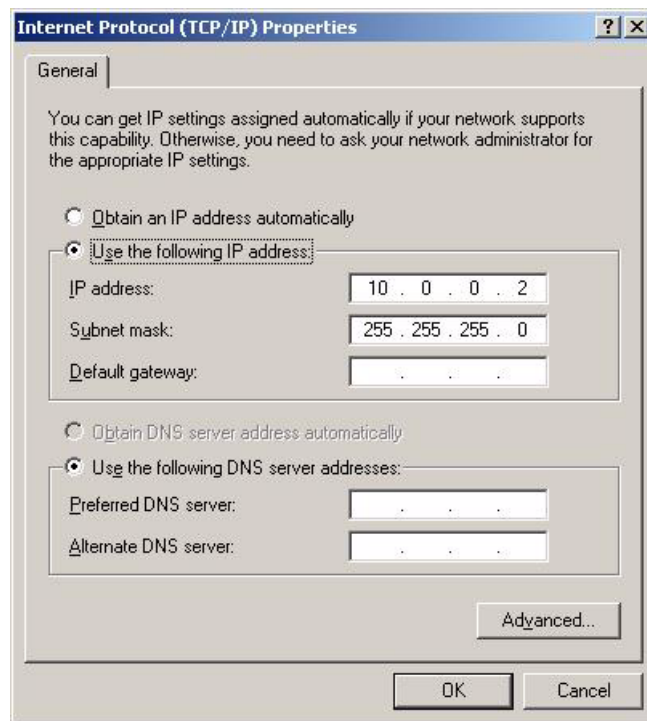
3. Scroll down, select Internet Protocol (TCP/IP), and click the Properties button.

FIGURE A-3 Local Area Connection Dialog Box



The TCP/IP properties dialog box (FIGURE A-4 on page 115) opens.

FIGURE A-4 Internet Protocol (TCP/IP) Properties Dialog Box



Note – If the port is set for the proper static IP and subnet mask, skip to [Step 5](#). Otherwise, perform step 4 to enter/edit the static IP address and subnet mask.

4. **Make sure the radio button Use the Following IP Address is selected, then enter a compatible static IP address, Subnet mask, and Default gateway.**
See your system administrator, as needed for assistance.

Note – Static IP address 10.0.0.2 is typically used for the computer to be compatible with a drive factory preset static IP address 10.0.0.1. However, if the drive's static IP has been customized for your site, you must set the computer's static IP to be compatible with the target drive. The first three digit sets must match, and the last digit set must be different from the target drive. The last digit set should also be different than any other possible target drive on your site.

5. **Click OK.**
The Local Area Connection Properties dialog box ([FIGURE A-3 on page 114](#)) reappears.
6. **Click OK.**
You can now connect to any on-site drive that has a compatible static IP address.

Dynamic IP Address

If you set a temporary static IP address for an Ethernet port normally used to connect to the LAN, you will need to reset the port to automatically obtain a dynamic IP address.

▼ Resetting IP to Auto, Windows OS

Use the following procedure to reset a local connection for dynamic IP address:

1. **Click Start, then select Settings > Network Connections (FIGURE A-1 on page 113).**

The Network Connections window opens (FIGURE A-2 on page 114).

2. **Double-click the Local Area Connection associated with the Ethernet port that requires change.**

The Local Area Connection Properties dialog box (FIGURE A-3 on page 114) opens.

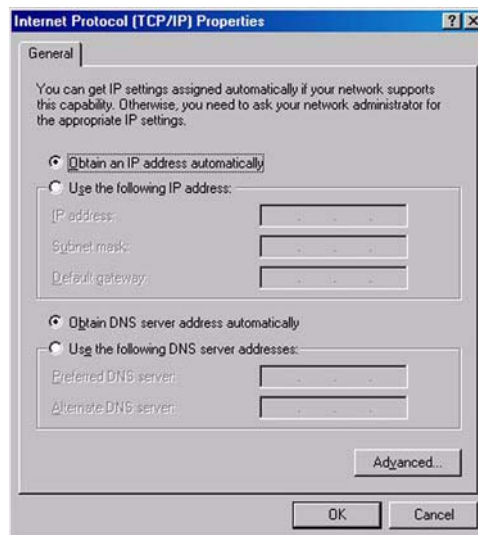
3. **Scroll-down, select Internet Protocol (TCP/IP), and click the Properties button.**

You will need to scroll down as TCP/IP is the last selection. The TCP/IP properties dialog box (FIGURE A-5) opens.

4. **Select Obtain an IP address automatically:**

The three IP address fields go blank, and become unavailable for entries.

FIGURE A-5 Internet Protocol (TCP/IP) Properties (auto IP) Dialog Box



5. **Click OK to save the reset.**

The Local Area Connection Dialog box (FIGURE A-3 on page 114) reappears.

6. **Click OK.**

The Ethernet port is now set to connect to a LAN.

VOP to Drives on Private Networks

This appendix provides supplemental information about VOP to drives connected on an IPv4 private network.

Private Network, SDP-Controlled

When a Service Delivery Platform (SDP) is present, all monitored drives are connected into an IPv4 private network controlled by the SDP site server.

The Ethernet port of every monitored drive is 100% dedicated to the service network, and each drive has an SDP-controlled dynamic IP address. Therefore, you do not have access to the drive Ethernet port and cannot connect your customer-version VOP to such drives.

Note – Only service representatives are authorized to access drives connected to an SDP-controlled private network. *Never* disconnect an Ethernet cable associated with an SDP-controlled private network.

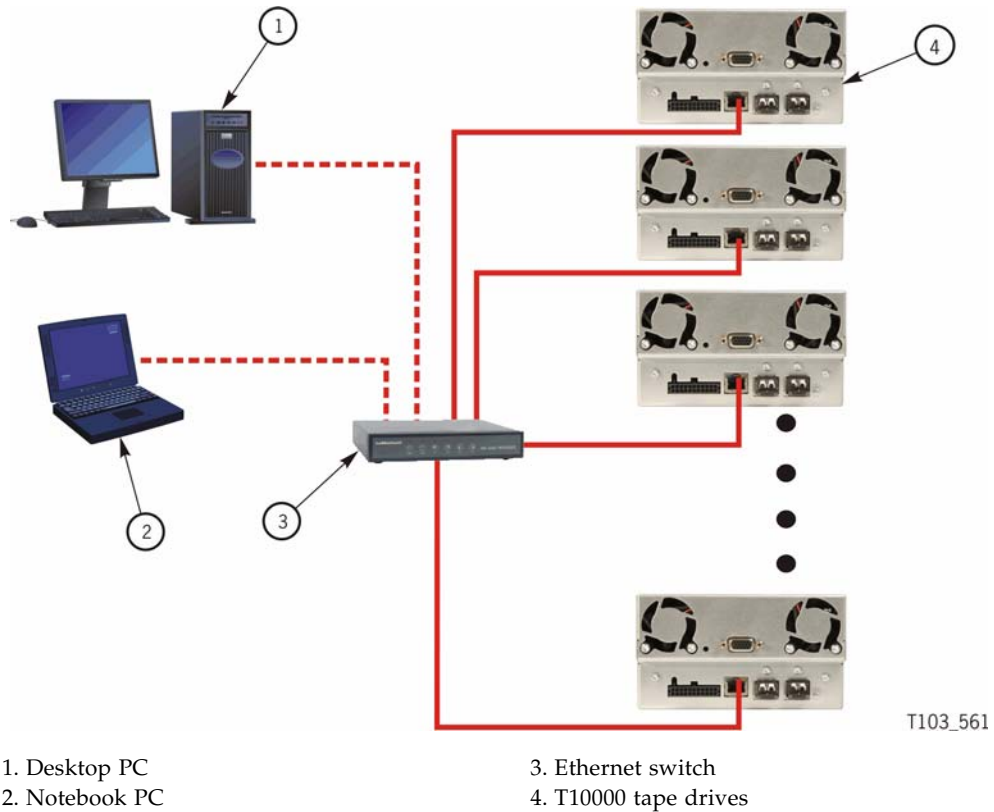
Contact your service representative to change drive configuration settings of any drive in the SDP-controlled private network.

However, when an SDP site server is not present, your site personnel can interconnect drives from one or more drive cabinets into a non-SDP private network. See [“Private Network, non-SDP” on page 118](#).

Private Network, non-SDP

When an SDP site server is not present, a non-SDP private network (FIGURE B-1), can be set up, interconnecting the installed drives to one or more cascaded Ethernet switches. Such a network allows you to access any connected drive from a central point.

FIGURE B-1 Private Network, non-SDP



Overview

In a non-SDP, customer-controlled private network, the Ethernet port of each drive is connected to an Ethernet switch. A desktop and/or notebook PC, running the customer-version VOP application, would also be connected to the network.

Note – Each connected drive and each computer requires an individual static IP address.

Components

The following table lists the required components for operating VOP in a non-SDP private network.

Component	Description
Computer	One or more desktop or notebook computers Note: The computer(s) must use the single-drive, version of the VOP, and an Ethernet port configured with a compatible static IPv4 address.
Ethernet switch(es)	One or more Ethernet switches might be required to provide a port for each drive, one port for each computer, plus additional ports to cascade multiple switches. Note: See the Ethernet switch vendor documentation for setup guidelines.
Ethernet CAT5 cables	One cable for each drive, one cable for each computer, plus additional cables to cascade multiple switches with enough length to connect to the switch port and allow strain relief.
Ethernet cross-over cable	One cross-over cable for direct computer-to-drive connection.

▼ Setup

Consult with your site IT manager, system administrator, and support personnel to install and setup the Ethernet components, and obtain the private network static IP addresses.

Note – Each drive should have been preset at the factory with the following:

Static IP address: 010.000.000.001

Subnet mask: 255.255.255.000

Default gateway: 255.255.255.255

However, it is a good idea to verify the data using the drive data property sheet for the network settings in the Retrieve menu of VOP.

Use the following procedure to set up each drive for the private network.

1. **Set your computer static IP address to 10.0.0.2 and the subnet mask to 255.255.255.0.**
See [“Static IPv4 Address”](#) on page 113.
2. **Start VOP**
See [Chapter 3, “Starting VOP Programs”](#) on page 39.
3. **Connect the Ethernet cross-over cable to the computer Ethernet port and to the drive Ethernet port.**
4. **On each installed drive, perform the following steps:**
 - a. **Connect VOP to the cabled drive.**
See [“To Use the Connect to Drive Command”](#).
 - b. **Reset the drive static IP address to one that is compatible with the new network, and commit the change.**
See [“To Set a Drive Static IPv4 Address”](#) on page 92.

c. Disconnect the Ethernet cross-over cable from the drive port.

Note – The VOP does not reconnect to the drive following the IPL because the drive static IP is no longer 10.0.0.1.

d. Connect a CAT5 Ethernet cable from the open drive port to an available port on the Ethernet switch.

If this is the last drive that needs an IP address change, continue with Step 5.

Note – Any drive can be connected to any available Ethernet switch port. It is not necessary to assign ports to specific drives. However, you should make a listing of the assigned IP address for each drive location.

e. Connect the computer Ethernet cross-over cable to the next drive Ethernet port.

The VOP should automatically connect to the drive because it is still attempting to reconnect to IP address 10.0.0.1.

5. Disconnect the cross-over cable from the computer.

6. Reset the computer static IP address to the private network-designated IP address.

See [“Static IPv4 Address” on page 113](#).

7. Connect a CAT 5 cable to the computer Ethernet port and to an available port on the Ethernet switch.

8. Connect VOP to a selected drive.

See [“To Use the Connect to Drive Command”](#).

Tip – Use the private network-designated drive static IP address.

9. Repeat [Step 8](#) for a few different drives.

Note – You only need to enter the other drive’s designated IP address into the Connect to Drive dialog box ([FIGURE 4-4 on page 50](#)).

The non-SDP private network is now ready for VOP access to any connected drive.

Glossary

This glossary defines terms and abbreviations in this publication.

Some of the definitions are taken from other glossaries. The letters in the parentheses that follow some definitions indicate the source of the definition:

(A) *The American National Standard Dictionary for Information Systems*, ANSI X3.172-1990, copyright 1990 by the American National Standards Institute (ANSI).

(E) The ANSI/Electronic Industries Association (EIA) Standard-440-A, *Fiber Optic Terminology*.

(I) *The Information Technology Vocabulary*, developed by Subcommittee 1, Joint Technical Committee 1, of the International Organization for Standardization and International Electrotechnical Commission (ISO/IEC/JTC1/SC1).

(IBM) *The IBM Dictionary of Computing*, copyright 1994 by IBM.

(T) Draft international standards committee drafts, and working papers being developed by the ISO/IEC/JTC1/SC1.

A

address A character or group of characters that identifies a register, a particular part of storage, or some other data source or destination. (A).

alphanumeric A character or group of characters that identifies a register, a particular part of storage, or some other data source or destination. (A).

C

capacity Total amount of User Data stored on one data cartridge in 8 bit bytes. *Synonymous with "User Capacity" or "Native Capacity"*. This is the capacity that the user sees after the ECC/Format/ERP etc. overhead has been assessed (no compression).

capacity, raw Total amount of data stored on one data cartridge in 8 bit bytes before any ECC/Format/ERP etc. overhead has been assessed (no compression).

- capacity, user** Total amount of data stored on one data cartridge in 8 bit bytes that is sent by the host computer. This is the capacity that the user sees after the ECC/Format/ERP etc. overhead has been assessed (no compression).
- cartridge** A storage device that consists of magnetic tape on supply and takeup reels, in a protective housing. (IBM)
- cleaning cartridge** A data cartridge that contains special material to clean the tape path in a transport or drive.
- compress** To save space by eliminating gaps, empty fields, redundancy, or unnecessary data to shorten the length of records or files. (IBM)
- configuration** The manner in which the hardware and software of an information processing system is organized and interconnected. (T)
- connector** An electrical or optical part that joins two or more other parts.

D

- data cartridge** A container holding magnetic tape that can be processed without separating the tape from the container.
- data path key management (DPKM)** The use of the SCSI 4 commands *Security Protocol In* and *Security Protocol Out* to implement host-based key management encryption on StorageTek tape drives.
- data security erase (DSE)** A random binary pattern, over-writing existing data, from the point of an Erase command, to the end-of-tape.
- data tape** A data cartridge formatted for use as a regular data tape for the system in which it is used.
- data track(s)** The region(s) of recorded tape containing user data formed as discreet longitudinal "tracks" (similar to railroad tracks).
- diagnostics** Pertaining to the detection and isolation of errors in programs and faults in equipment. (IBM)
 - DPKM** See data path key management.
 - drive** A device for moving magnetic tape and controlling its movement. (IBM)
 - dump** To copy the contents of all or part of virtual storage to collect error information. (IBM)

E

- emulation** The use of programming techniques and special machine features to permit a computing system to execute programs written for another system. (IBM)
- encryption** The translation of data into a secret code. Encryption is one of the most effective ways to achieve data security. To read an encrypted file, you must have access to a special key or password that enables you to decipher it.

- EOT** End of Tape.
- erase** To remove data from a data medium, leaving the medium available for recording new data. (I) (A)
- error** A discrepancy between a computed, observed, or measured value or condition and the true, specified, or theoretically correct value or condition. (I) (A)
- ESD** Electrostatic Discharge.

F

fault symptom code

(FSC) A four-character hexadecimal code generated in response to an error to help isolate failures within the device.

FC *See fibre channel.*

fiber optics The branch of optical technology concerned with the transmission of radiant power through fibers made of transparent materials such as glass, fused silica, and plastic. (E)

fiber-optic cable A cable made of ultrathin glass or silica fibers which can transmit data using pulses of laser light. Fiber-optic cables have several advantages over copper cables: they have much less signal loss; they allow information to be transmitted at higher speeds and over longer distances; they are not affected by external electrical noise; and they are better for transmissions which require security.

fibre channel The National Committee for Information Technology Standards standard that defines an ultrahigh-speed, content-independent, multilevel data transmission interface that supports multiple protocols simultaneously. Fibre Channel supports connectivity to millions of devices over copper and/or fiber-optic physical media and provides the best characteristics of both networks and channels over diverse topologies.

fibre connection

(FICON) An ESA/390 and zSeries computer peripheral interface. The I/O interface uses ESA/390 and zSeries FICON protocols (FC-FS and FC-SB-2) over a Fibre Channel serial interface that configures units attached to a FICON-supported Fibre Channel communications fabric.

FICON *See fibre connection (FICON).*

FICON channel A channel having a Fibre Channel connection (FICON) channel-to-control-unit I/O interface that uses optical cables as a transmission medium.

file-protect To prevent the erasure or overwriting of data stored on data cartridges.

FIPS Federal Information Processing Standards

FRU Field Replaceable Unit.

FSC Fault Symptom Code.

FTP Generic definition: File Transfer Protocol.

G

- GB** See *gigabyte (GB)*.
- Gb** Gigabit, equal to 10^9 bits.
- Gbps** Gigabits per second.
- gigabyte (GB)** One billion (10^9) bytes.

H

- hardware** All or part of the physical components of an information processing system, such as computers or peripheral devices. (T) (A)
- hub** A Fibre Channel Arbitrated Loop switching device that allows multiple servers and targets, such as storage systems, to connect at a central point. A single hub configuration appears as a single loop.

I

- indicator** A device that provides a visual or other indication of the existence of a defined state. (T)
- interface** Hardware, software, or both, that links systems, programs, or devices. (IBM)
- internet protocol (IP)** A protocol used to route data from its source to its destination in an Internet environment. (IBM)
- internet protocol (IP) address** A four-byte value that identifies a device and makes it accessible through a network. The format of an IP address is a 32-bit numeric address written as four numbers separated by periods. Each number can be from 0 to 255. For example, 129.80.145.23 could be an IP address.
- IP** See *internet protocol (IP)*
- internet protocol v4 (IPv4) address** A four-byte value that identifies a device and makes it accessible through a network. The format of an IP address is a 32-bit numeric address written as four numbers separated by periods. Each number can be from 0 to 255. For example, 129.80.145.23 could be an IP address.
- internet protocol v6 (IPv6) address** The next generation internet protocol. It provides a much larger address space than IPv4. This is based upon the definition of a 128-bit address - IPv4 used a 32-bit address. The IPv6 address format is eight fields of four hexadecimal characters separated by colons (for example, 2001:0db8:85a3:0000:0000:8a2e:0370:7334)

L

library A robotic system that stores, moves, mounts, and dismounts data cartridges that are used in data read or write operations.

Linear Tape-Open (LTO) A set of data format standards created to enable data interchange among tape drive produced by a consortium of manufacturers. With LTO standards, the tape cartridges are interchangeable among tape drive brands.

link A physical connection (electrical or optical) between two nodes of a network.

M

magnetic tape A tape with a magnetizable layer on which data can be stored. (T)

menu A list of options displayed to the user by a data processing system, from which the user can select an action to be initiated. (T)

N

network An arrangement of nodes and branches that connects data processing devices to one another through software and hardware links to facilitate information interchange.

O

offline Neither controlled by, nor communicating with, a computer. (IBM)

online Pertaining to the operation of a functional unit when under the direct control of the computer. (T)

P

performance One of two major factors, together with facility, on which the total productivity of a system depends. Performance is largely determined by a combination of throughput, response time, and availability. (IBM)

R

- read/write head** The data sensing and recording unit of a diskette magazine drive or tape drive. (IBM)
- release** A distribution of a new product or new function and fixes for an existing product. (IBM)
- R/W** Read/Write.

S

- SDP** Service Delivery Platform.
- submenu** A menu related to and reached from a main menu. (IBM)
- sub-system** A system that is part of some larger system.
- switch** In Fibre Channel technology, a device that connects Fibre Channel devices together in a fabric.
- system** A combination of functionally interrelated interacting mechanical and electrical elements designed to work as a coherent entity.

T

- tape** *See* magnetic tape.
- tape cartridge** A container holding magnetic tape that can be processed without separating the tape from the container.
- tape drive** A device for moving magnetic tape and controlling its movement. (T)
- TCP/IP** Transmission Control Protocol/Internet Protocol
- transmission control protocol/internet protocol (TCP/IP)** A set of communication protocols that support peer-to-peer connectivity functions for both local and wide area networks. (IBM)

U

- Ultrium** An LTO tape format optimized for high capacity and performance with outstanding reliability. The Ultrium tape format uses a single reel cartridge to maximize capacity.

V

T10000 Tape Drive

(VOP) A software application that allows a user to monitor and perform some operations on a tape drive.

VOLSER VOLume SERIAL Number. It is, usually 6 characters long and is both the paper label stuck on the back edge of the cartridge and in the VOLID label that is recorded, particularly by MVS systems, at the beginning of the media.

volume serial number

(VOLSER) An alphanumeric label that the host software uses to identify a volume. It attaches to the spine of a cartridge and is both human- and machine-readable.

VOP See *T10000 Tape Drive (VOP)*.

W

wrap A single pass of tape from either BOT to EOT or EOT to BOT with the head(s) in a fixed transverse location.

write-enabled A setting on a data cartridge that allows data to be written on the tape.

write-protected A setting on data cartridges that prevents data from being written on the tape. Reading data is still possible.

Index

A

- abort button 57
- about button 109
- about dialog, VOP 98
- adapter dump button 109
- application window
 - VOP, LTO 19
 - VOP, T-series 17, 23

B

- button
 - ltoVOP
 - about 109
 - adapter dump 109
 - cancel 108
 - clear transcript 109
 - commit 108
 - connect 19
 - enroll 108
 - get support logs 109
 - IPL 109
 - load firmware 109
 - run loopback test 109
 - set offline/online 107, 108
 - T-series VOP
 - abort format tape cartridge 57
 - cancel configure command 77
 - commit configure command 77
 - done format tape cartridge 57
 - load drive config configure command 77
 - make format tape cartridge 57

C

- cancel button 77, 108
- canceling pending changes 76, 84
- changing computer IP address to dynamic 116
- clear transcript
 - button, ltoVOP 109
 - T-series VOP 50
- commit button
 - ltoVOP (configure drive) 108
 - ltoVOP (enroll) 108

- T-series VOP 77
- computer hardware requirements 20
- configure
 - drive, LTO VOP 108
 - menu, T-series VOP 75
- connect to drive
 - LTO VOP 19
 - ltoVOP 103
 - T-series VOP 50

D

- data compression 85
- date
 - setting 95
 - view 59, 71
- dictionary, FSC 99
- done button 57
- download VOP zip folder 26
- DPKM 79
- drive
 - connect to
 - LTO VOP 19
 - T-series VOP 50
 - Ethernet port, rear panel 47
 - IPL of T-series 52, 54
 - status indicators
 - LTO VOP 19
 - T-series VOP 18
- drive data command 76
- drive operations menu 52
 - force dump 52, 55
 - format tape 56
 - IPL drive 52, 54
 - load tape 52
 - picture of 52
 - set offline 52, 53
 - set online 52, 53
 - unload tape 52
- drive tray, Ethernet port 21
- dumps to file
 - command description 59

- procedure 71
- dynamic computer address (changing to) 116

E

- encrypt tab
 - change configuration 79
 - view, T10000 drive 61
 - view, T9840D 62
- enroll
 - button 108
 - drive, LTO VOP 107
- Ethernet port on a drive tray 21
- Ethernet port, drive 47
- exit 51

F

- fault symptom code dictionary 99
- fibre tab
 - configure T9840D 83
 - view FCP 63
 - view FICON 64
- file menu
 - clear transcript 50
 - connect to drive 50
 - exit 51
 - overview 49
 - picture of 49
- force dump 52, 55
- format tape
 - command 56
 - make code tape 56
 - make data tape 56
 - make dump tape 56
 - rebuild MIR 56
 - submenu 57

G

- get support logs button 109
- Glossary 121

H

- hardware requirements 20
- help
 - about 98
 - FSC dictionary 99
 - menu 98

I

- ID File to file
 - procedure 71
- ID file to file
 - command description 59
- indicators, drive status
 - LTO VOP 19

- T-series VOP 18
- installation
 - JRE software 23
 - VOP software 29
 - overview 26
- Introduction, VOP 17
- IPL
 - button, ltoVOP 109
 - T-series VOP
 - command description 52
 - procedure 54

J

- Java Runtime Environment
 - download 23
 - minimum release level requirement 22
- JRE 23

K

- keyid tab 65

L

- language 87
- load code from tape 96
- load drive config, button 77
- load firmware button 109
- load tape 52
- logs, retrieve to file
 - command description 59
 - procedure 74
- LTO VOP
 - application window 19
 - button
 - about 109
 - adapter dump 109
 - cancel 108
 - clear transcript 109
 - commit 108
 - 108
 - connect 19
 - enroll 108
 - get support logs 109
 - IPL 109
 - load firmware 109
 - run loopback test 109
 - set offline/online 107, 108
 - operation 101
 - start operation
 - desktop shortcut 44
 - programs list 45
 - Windows Explorer 44
 - Windows Run dialog box 44
 - tab
 - configure drive 108
 - enroll drive 107

- monitor drive 106
- service drive 109

M

- make
 - button 57
 - code tape 56
 - data tape 56
 - dump tape 56
- manufacturing tab 66
- menu
 - configure 75
 - drive operations 52
 - file 49
 - help 98
 - retrieve 59
- missing tab 67
- monitor drive, LTO VOP 106

N

- network tab
 - configure 90
 - IPv6 static address 90
 - view 68

O

- operating system certification 21
- operation
 - LTO VOP 101
 - T-series VOP 47

P

- perms to file 59, 73
- Preface 13
- prerequisites 20
 - hardware 20
 - Java 22
 - operating system 21
- private networks
 - overview, non-SDP 118
- property sheet
 - T-series VOP
 - Encrypt 79

R

- rear panel Ethernet port 47
- rebuild MIR 56
- requirements, VOP
 - hardware 20
 - Java Runtime Environment 22
 - operating system 21
- retrieve menu 59
 - picture of 59
 - view date & time 59, 71

- view drive data 59, 60
- RFID tab 69
- run loopback test button 109

S

- save drive configuration 94
- service drive, LTO VOP 109
- set
 - clock 95
 - offline, procedure 53
 - offline, T-series VOP 52
 - offline/online button (ltoVOP) 107, 108
 - online, procedure 53
 - online, T-series VOP 52
- software installation
 - JRE 23
 - VOP 26
- static address
 - computer setting, Windows OS 113
 - IPv6 90

T

- T9840D configure drive settings 83
- tape cartridge write-protect switch 58
- time
 - setting clock 95
 - view, command description 59
 - view, procedure 71

U

- unload tape 52

V

- version tab 70
- view current drive settings
 - encrypt tab 61, 62
 - fibre tab (FCP) 63
 - fibre tab (FICON) 64
 - keyid tab 65
 - manufacturing tab 66
 - missing tab 67
 - network tab 68
 - RFID tab 69
 - version tab 70
- view drive data 59, 60
- VOP
 - application software installation 26
 - application window
 - LTO 19
 - T-series 17, 23
 - connect to drive
 - LTO 103
 - T-series 50
 - installation 29
 - Introduction 17

LTO

- application window 19
- configure drive tab 108
- connect to drive 103
- enroll drive tab 107
- monitor drive tab 106
- service drive tab 109
- window menu 20

operation

- ethernet connection 20
- LTO 101
- menu bar 48
- T-series 47

T-series

- application window (Windows OS) 17
- configure menu 75
- drive operations menu 52
- file menu 49
- help menu 98
- menus, indicators, and controls 48
- retrieve menu 59

VOP operation

- controls 48
- menus, T-series
 - configure 75
 - drive operations 52
 - file 49
 - help 98
 - retrieve 59
- start
 - desktop shortcut 41
 - programs list 40
 - run dialog box 42
 - Windows Explorer 41

W

window

- menu, ltoVOP 20
 - T-series VOP (Solaris) 18
 - T-series VOP (Windows OS) 17, 23
- world wide name 88
- write-protect switch, tape cartridge 58