

Oracle® Virtual Assembly Builder

Installation Guide

11g Release 1.1 (11.1.1)

E18705-01

April 2011

Oracle Virtual Assembly Builder Installation Guide 11g Release 1.1 (11.1.1)

E18705-01

Copyright © 2010, 2011, Oracle and/or its affiliates. All rights reserved.

This software and related documentation are provided under a license agreement containing restrictions on use and disclosure and are protected by intellectual property laws. Except as expressly permitted in your license agreement or allowed by law, you may not use, copy, reproduce, translate, broadcast, modify, license, transmit, distribute, exhibit, perform, publish, or display any part, in any form, or by any means. Reverse engineering, disassembly, or decompilation of this software, unless required by law for interoperability, is prohibited.

The information contained herein is subject to change without notice and is not warranted to be error-free. If you find any errors, please report them to us in writing.

If this software or related documentation is delivered to the U.S. Government or anyone licensing it on behalf of the U.S. Government, the following notice is applicable:

U.S. GOVERNMENT RIGHTS Programs, software, databases, and related documentation and technical data delivered to U.S. Government customers are "commercial computer software" or "commercial technical data" pursuant to the applicable Federal Acquisition Regulation and agency-specific supplemental regulations. As such, the use, duplication, disclosure, modification, and adaptation shall be subject to the restrictions and license terms set forth in the applicable Government contract, and, to the extent applicable by the terms of the Government contract, the additional rights set forth in FAR 52.227-19, Commercial Computer Software License (December 2007). Oracle USA, Inc., 500 Oracle Parkway, Redwood City, CA 94065.

This software is developed for general use in a variety of information management applications. It is not developed or intended for use in any inherently dangerous applications, including applications which may create a risk of personal injury. If you use this software in dangerous applications, then you shall be responsible to take all appropriate fail-safe, backup, redundancy, and other measures to ensure the safe use of this software. Oracle Corporation and its affiliates disclaim any liability for any damages caused by use of this software in dangerous applications.

Oracle is a registered trademark of Oracle Corporation and/or its affiliates. Other names may be trademarks of their respective owners.

This software and documentation may provide access to or information on content, products, and services from third parties. Oracle Corporation and its affiliates are not responsible for and expressly disclaim all warranties of any kind with respect to third-party content, products, and services. Oracle Corporation and its affiliates will not be responsible for any loss, costs, or damages incurred due to your access to or use of third-party content, products, or services.

Contents

Preface	v
Audience	v
Documentation Accessibility	v
Related Documents	vi
Conventions	vi
1 Prepare for Installation	
1.1 Security Precautions	1-1
1.2 Before you Begin	1-1
1.2.1 Virtual to Virtual Introspection and Deployment Requirements	1-1
1.2.1.1 Introspection	1-2
1.2.1.2 Base Image Template Sizing	1-2
1.2.2 Unzip Utility on Reference Systems	1-2
1.2.3 SSH Port Forwarding Must be Enabled	1-2
1.3 Installation Overview	1-2
1.3.1 Installation Road Map	1-2
1.4 Certification and System Requirements	1-3
1.4.1 Certification	1-3
1.4.2 System Requirements	1-3
1.4.2.1 Operating Systems	1-3
1.4.2.2 Java Development Kit	1-3
1.4.2.3 Oracle Enterprise Linux JeOS	1-3
1.4.2.4 System Base Images	1-4
2 Install	
2.1 Install Oracle Virtual Assembly Builder	2-1
2.1.1 Install and Configure	2-1
2.1.2 Install Only	2-15
2.1.3 Configure Only	2-22
2.1.4 Silent Installation	2-30
2.2 Deinstall	2-30

Index

Preface

This book details the requirements and steps needed to install Oracle Virtual Assembly Builder. This Preface includes the following topics:

- [Audience](#)
- [Documentation Accessibility](#)
- [Related Documents](#)
- [Conventions](#)

Audience

The intended audience is users who will install Oracle Virtual Assembly Builder for their organization.

Documentation Accessibility

Our goal is to make Oracle products, services, and supporting documentation accessible to all users, including users that are disabled. To that end, our documentation includes features that make information available to users of assistive technology. This documentation is available in HTML format, and contains markup to facilitate access by the disabled community. Accessibility standards will continue to evolve over time, and Oracle is actively engaged with other market-leading technology vendors to address technical obstacles so that our documentation can be accessible to all of our customers. For more information, visit the Oracle Accessibility Program Web site at <http://www.oracle.com/accessibility/>.

Accessibility of Code Examples in Documentation

Screen readers may not always correctly read the code examples in this document. The conventions for writing code require that closing braces should appear on an otherwise empty line; however, some screen readers may not always read a line of text that consists solely of a bracket or brace.

Accessibility of Links to External Web Sites in Documentation

This documentation may contain links to Web sites of other companies or organizations that Oracle does not own or control. Oracle neither evaluates nor makes any representations regarding the accessibility of these Web sites.

Deaf/Hard of Hearing Access to Oracle Support Services

To reach Oracle Support Services, use a telecommunications relay service (TRS) to call Oracle Support at 1.800.223.1711. An Oracle Support Services engineer will handle

technical issues and provide customer support according to the Oracle service request process. Information about TRS is available at <http://www.fcc.gov/cgb/consumerfacts/trs.html>, and a list of phone numbers is available at <http://www.fcc.gov/cgb/dro/trsphonebk.html>.

Related Documents

For more information, see the following documents in the documentation set:

- *Oracle Virtual Assembly Builder User's Guide*
- *Oracle Virtual Assembly Builder Release Notes*

Conventions

The following text conventions are used in this document:

Convention	Meaning
boldface	Boldface type indicates graphical user interface elements associated with an action, or terms defined in text or the glossary.
<i>italic</i>	Italic type indicates book titles, emphasis, or placeholder variables for which you supply particular values.
<code>monospace</code>	Monospace type indicates commands within a paragraph, URLs, code in examples, text that appears on the screen, or text that you enter.

Prepare for Installation

The following sections describe how to do a complete installation of Oracle Virtual Assembly Builder.

- [Section 1.1, "Security Precautions"](#)
- [Section 1.2, "Before you Begin"](#)
- [Section 1.3, "Installation Overview"](#)
- [Section 1.4, "Certification and System Requirements"](#)

1.1 Security Precautions

Read this section before proceeding. It contains vital security information and precautions. Failure to read and understand these items may cause security vulnerabilities.

- The user who installs should be a trusted user, and a member of a trusted OS group.
- The template creation process does a security check to see that the Operating System (OS) user attempting to create the template is the same OS user who owns the Oracle Virtual Assembly Builder `bin` directory. Having the OS user who installs the product be the same OS user who creates templates ensures that the security check will succeed.

1.2 Before you Begin

Before using Oracle Virtual Assembly Builder, ensure that your environment meets the following prerequisites. These items are not required for installation, but are necessary environmental components for the use of Oracle Virtual Assembly Builder.

1.2.1 Virtual to Virtual Introspection and Deployment Requirements

The following are requirements for virtual to virtual introspection and deployment.

Note: Virtual introspection can only be performed on non-Oracle JRockit Virtual Edition deployments.

1.2.1.1 Introspection

Introspection on a deployed virtual machine (VM) can fail to complete when the temporary directory used for introspection is a mounted NFS share with NFS file locking. To avoid this problem, remount the NFS file system with locking turned off:

```
mount -o nolock example:/scratch /net/example/scratch
```

1.2.1.2 Base Image Template Sizing

You must ensure that the reference system on the virtual machine has enough space for an image of itself. If this is an issue, you can resolve it by using one of the following options:

- Copy `System.img` to Oracle Virtual Assembly Builder host and run `modifyjeos` to increase the disk size to handle the snapshot of the product installation. Then redeploy the image and restart it. This will provide enough space in the `/tmp` directory.
- If the previous option is not feasible, mount an NFS disk of suitable size, and place the catalog on it. For remote packaging, use the NFS disk location, rather than `/tmp`.

1.2.2 Unzip Utility on Reference Systems

Oracle Virtual Assembly Builder requires that the Unzip utility be present on reference systems in order for remote introspection to work properly.

1.2.3 SSH Port Forwarding Must be Enabled

Oracle Virtual Assembly Builder requires that SSH port forwarding be enabled on reference systems in order for remote operations (such as introspection and packaging) to work properly.

1.3 Installation Overview

In order to deploy your applications into virtualized environments, you must also have appropriate *Reference Systems* set up (for *Introspection*), and an Oracle VM environment ready to deploy your applications.

1.3.1 Installation Road Map

This document details the steps you must complete in order to install and configure Oracle Virtual Assembly Builder. The entire process is comprised of the following steps:

- Install and configure your reference systems. Supported reference systems include:
 - Oracle Coherence*Web
(http://download.oracle.com/docs/cd/E15357_01/coh.360/e15829/toc.htm)
 - Oracle RDBMS (single instance)
(<http://www.oracle.com/technology/products/database/oracle11g/index.html>)
 - Oracle Web Cache
(<http://www.oracle.com/technetwork/middleware/ias/index-089317.html>)

- Oracle HTTP Server
(<http://www.oracle.com/technetwork/middleware/ias/index-091236.html>)
- Oracle WebLogic Server
(<http://www.oracle.com/technology/products/weblogic/index.html>)
- Install and configure Oracle Virtual Assembly Builder (this Guide).
- Install and configure your deployment environment. See also Oracle VM (<http://www.oracle.com/technetwork/server-storage/vm>) for more information.

1.4 Certification and System Requirements

Ensure your environment meets all requirements before starting the installation.

1.4.1 Certification

This certification document details supported installation types, platforms, operating systems, databases, and JDKs. See *Virtual Assembly Builder* in Oracle Fusion Middleware 11g Release 1 (at http://www.oracle.com/technology/software/products/ias/files/fusion_certification.html).

1.4.2 System Requirements

Please ensure you meet the following requirements.

1.4.2.1 Operating Systems

The following operating systems are supported:

- Oracle Enterprise Linux 5 (UL3+) (32-bit. 64 bit supported in 32-bit mode)
- Red Hat Enterprise Linux 5 (UL3+) (32-bit. 64 bit supported in 32-bit mode)

You can verify your operating system version using the commands listed here.

- Oracle Enterprise Linux:
cat /etc/enterprise-release
- Red Hat Enterprise Linux:
cat /etc/redhat-release

1.4.2.2 Java Development Kit

Oracle Universal Installer includes Sun JDK for Linux. You can choose to install it (the JDK) during installation and use it with Oracle Virtual Assembly Builder. You can also choose to use your own JDK installation.

1.4.2.3 Oracle Enterprise Linux JeOS

Download and install Oracle Enterprise Linux JeOS from: <http://edelivery.oracle.com/oraclevm>. If this is your first time using eDelivery, you will be required to register. Register, then continue.

1. On the *Welcome* screen, click **Continue**. The Media Pack Search screen appears.

2. Select a **Product Pack** (*Oracle Linux*), and **Platform** (*x86 32 bit*). Click **Go**. The Results are displayed.
3. Select **Oracle Linux JeOS for Building Oracle VM templates for x86 (32 bit)**. Click **Continue**. Available downloads appear.
4. Download **JeOS Base x86 and x86_64**, by clicking **Download**. The file is downloaded.
5. Unzip the downloaded zip file.
6. (As root) install the RPM packages using the `rpm` command with the `-i` option.

1.4.2.4 System Base Images

Depending on the type of operating system you choose for your appliance at template creation time, you may need the Oracle Enterprise Linux Base Image or Oracle WebLogic Server on Oracle JRockit Virtual Edition Base Image (or both).

Note: You have a choice of downloading an Oracle provided *sample* Oracle Enterprise Linux Base Image, or creating your own. The sample image is available on Oracle Technology Network:

<http://www.oracle.com/technology/products/ovab>

Ensure that the base image architecture matches your component software. That is, use a 32-bit base image if your component software is 32-bit; 64-bit base image for 64-bit component software.

To create the appropriate Base Image(s):

- Oracle Enterprise Linux Base Image, see: <http://www.oracle.com/technetwork/server-storage/vm/overview/templates-101937.html> The information on this, and referenced pages, will provide the information you need to create your own System Base Image.

When specifying a base image, the image must meet the following requirements:

- Oracle Enterprise Linux 5 (UL3+)
- At least 250MB of free space for `/tmp`. (depending on the type of product your are creating appliance for and deploying, you may need more free space. Refer to appropriate product install guide for specific free space requirement)
- At least 500MB of swap space
- You must have installed the following packages (RPMs):
 - `nc`
 - `libaio`
 - `zip`
 - `unzip`
 - `nfs-utils`
 - `xen-tool`
- In addition, for deploying virtual machines for FMW components, you must have installed:
 - * `gcc`

- * gcc-c++
- * setarch
- * sysstat
- * libaio
- * libaio-devel
- * libstdc++
- * libstdc++-devel
- * compat-libstdc++
- * compat-db
- * control-center
- * glibc-common
- * binutils
- * make
- For deploying virtual machines for Oracle Database, you must have installed:
 - * binutils
 - * compat-libstdc++
 - * elfutils-libelf
 - * elfutils-libelf-devel
 - * gcc
 - * gcc-c++
 - * glibc
 - * glibc-common
 - * glibc-devel
 - * glibc-headers
 - * libaio
 - * libaio-devel
 - * libgcc
 - * libstdc++
 - * libstdc++-devel
 - * make
 - * numactl-devel
 - * sysstat
 - * ksh
- For FMW components, the following shell parameters must be set:
 - * soft=4096
 - * hard=4096
- For Oracle database, the following shell parameters must be set

- * nproc-soft=2047
- * nproc=hard=16384
- * nofile-soft=1024
- * nofile-hard=65536
- * maxproc(ulimit -p)=16384
- * descriptors(ulimit -n)=65536
- For Oracle database, the following kernel parameters must be set:
 - * Semaphore Limits


```
semgni=128 # max number of arrays; default is 128
semmsl=250 # max semaphores per array. default is 250
semms=32000 # max semaphores system wide; default is 32000
semopm=100 # max ops per semop call; default is 32
```
 - * Shared Memory Limits


```
shmmni=4096 # max number of segments; default is 4096
shmmax=0.5GB # max seg size (kbytes); default is 4194303, which is 3GB
shmall=2097152 # max total shared memory (kbytes); default is
1073741824
```
 - * File Descriptors


```
file-max=6815744 # system wide file descriptors; default is 204573;
aio-max-nr=Maximum:1048576 # default is 65536;
ip_local_port_range=9000 65500 # default is 32768 61000;
rmem_default=262144 # default is 109568;
rmem_max=4194304 # default is 131071;
wmem_default=262144 # default is 105968
wmem_max=1048576 # default is 131071
```
- Additional database requirements:
 - * Name Resolution: Ensure that host names are resolved through the /etc/hosts file. Note that this is not what base image can preset.
 - * Add the following line in the /etc/pam.d/login file:


```
session required pam_limits.so
```
- You must turn on `oraclevm-templates` while creating the image.
- Oracle recommends that you turn off `iptables` while creating the image.
- The base image must have the user `oracle`. One example of meeting this requirement is to boot the base image, log on to it as root, and call `/usr/sbin/useradd oracle`.

Note: The primary group for `oracle` user must be `oracle`. By default, when you create the `oracle` user, it is automatically set. To set it manually, create the group and assign it to `oracle` user by executing:

```
/usr/sbin/groupadd oracle
/usr/sbin/usermod -g oracle -a -G oracle oracle
```

Refer to your `modifyjeos` documentation for instructions on creating a base image.

- Oracle WebLogic Server on Oracle JRockit Virtual Edition Base Image is included in the Oracle WebLogic Server on Oracle JRockit Virtual Edition bundle. Unzip the product's zip file, and find the `system.img` and `vm.cfg` files (in the `wlsve` sub-directory of the structure into which you unzipped the files).

Note: The base image (`system.img`) must not have an executable bit. Otherwise, export/import may not work properly. You must set the permission of base images properly, for example, to `644`:

```
$ chmod 644 System.img
$ ls -l System.img
-rw-r--r-- 1 jdoe g900 748500480 Apr 22 12:52 System.img
```

The following sections describe how to do a complete installation of Oracle Virtual Assembly Builder.

- [Section 2.1, "Install Oracle Virtual Assembly Builder"](#)
- [Section 2.2, "Deinstall"](#)

2.1 Install Oracle Virtual Assembly Builder

Follow these steps to install and configure Oracle Virtual Assembly Builder.

Note: These installation instructions are limited to installing Oracle Virtual Assembly Builder on Oracle Enterprise Linux 5 (UL3+). You can adapt them for your local environment.

You can install and configure all at once (recommended) using Oracle Universal Installer, or you can choose to install only and configure at another time.

- [Section 2.1.1, "Install and Configure"](#)
- [Section 2.1.2, "Install Only"](#)
- [Section 2.1.3, "Configure Only"](#)
- [Section 2.1.4, "Silent Installation"](#)

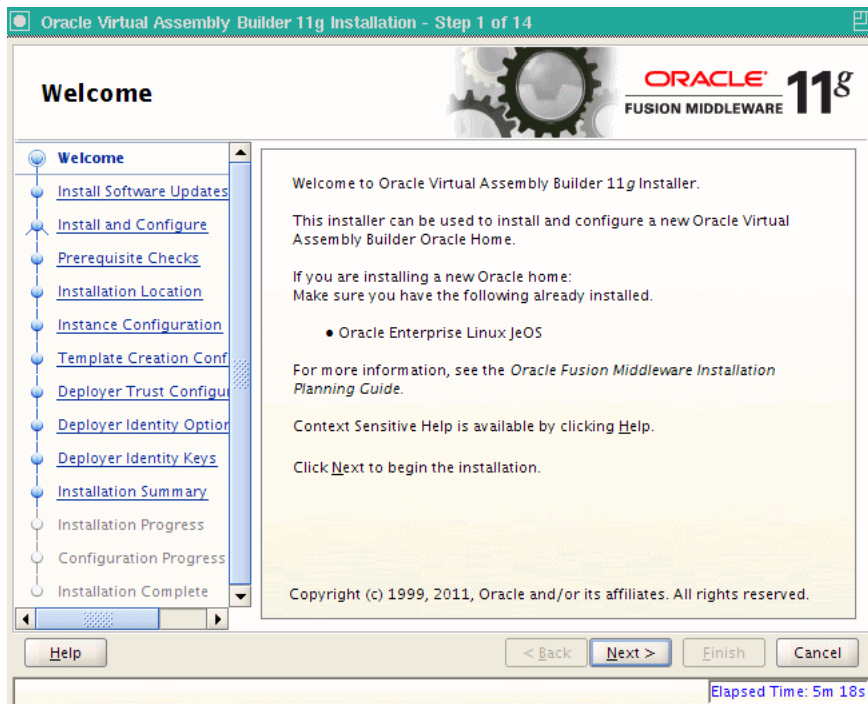
To start installation, launch Oracle Universal Installer (`.Disk1/runInstaller`).

2.1.1 Install and Configure

You can choose to install Oracle Virtual Assembly Builder software in an Oracle Home as well as configure an Oracle Virtual Assembly Builder instance Home with various details provided. To install and configure Oracle Virtual Assembly Builder, start the installer, then follow these steps:

1. **Welcome.** This page introduces the installation. The flow of installation appears in the left panel, and control buttons appear along the bottom.

Figure 2–1 Installation Welcome page



When you are ready to begin installation, click **Next**. The *Install Software Updates* page appears.

Note: Help is available on all of the pages. Use it to learn about what you can do in that page, field descriptions, possible values, and other information.

2. **Software Updates.** Before continuing with installation, you should ensure that your Oracle software is up to date. You have the option to skip this step by selecting the **Skip Software Updates** radio button, but only skip updates if you are sure that all of your software is up to date.

Figure 2–2 Install Software Updates page

Enter your Oracle Support user name and password, then click **Test Connection** to test your credentials.

Click **Proxy Settings** (optional) if your computer is behind a firewall or a proxy and not in direct contact with the Internet.

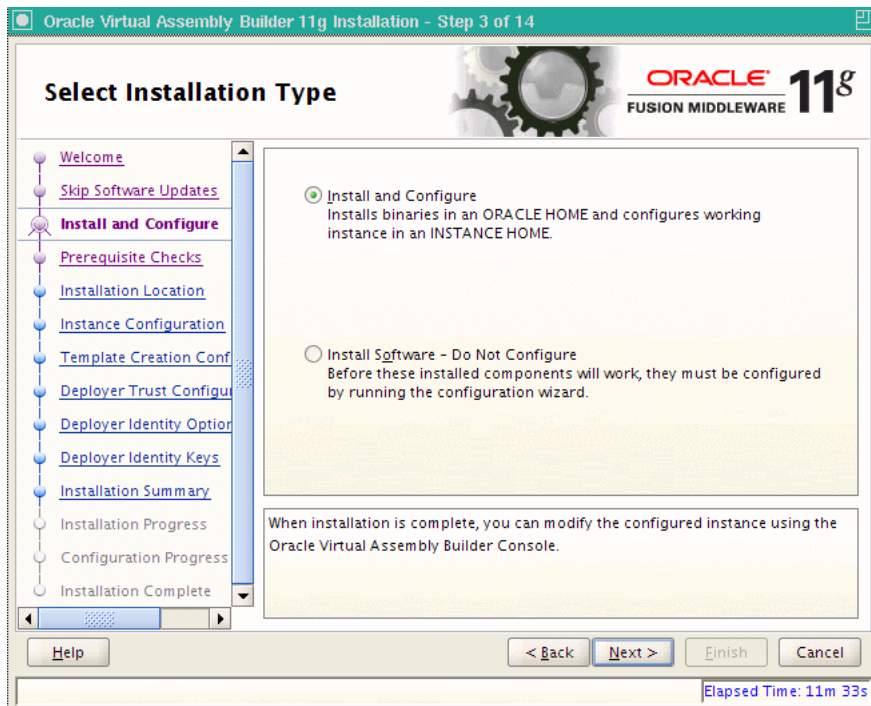
Figure 2–3 Proxy Settings page

Enter proxy information and test the connection and/or click **OK**.

Click **Skip Software Updates** if you do not want to search for any software updates.

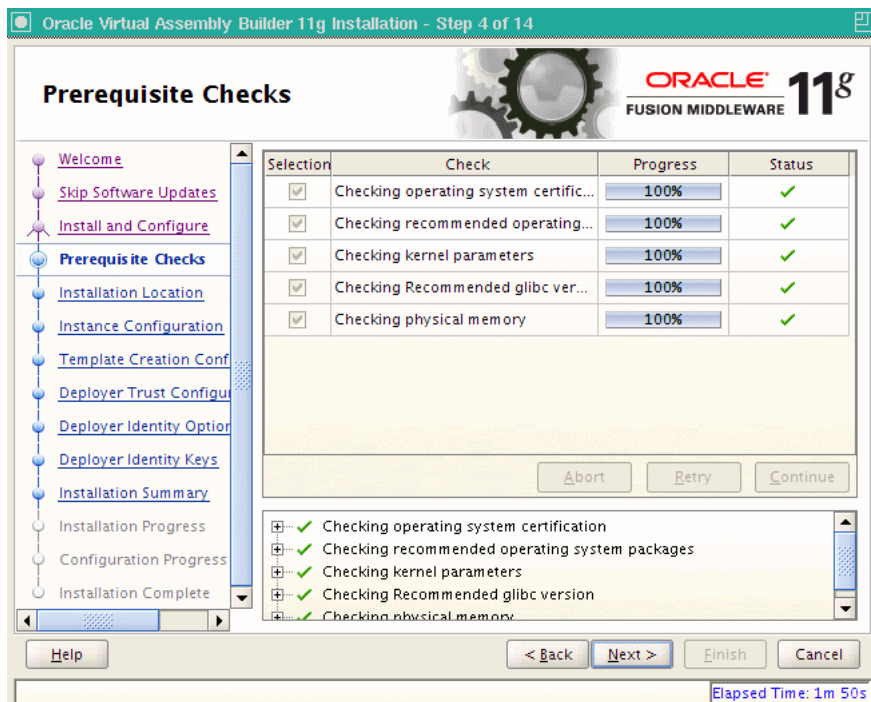
Click **Next**. Updates are installed, and the *Select Installation Type* page appears.

Figure 2–4 Select Installation Type page



3. **Installation Type.** Use this page to choose whether you want to install and configure at this time, or just to install and configure at a later time. Since this section covers install and configure, choose the **Install and Configure** radio button, then click **Next**. The *Prerequisite Checks* page appears showing the progress of the checks, and listing any deficiencies.

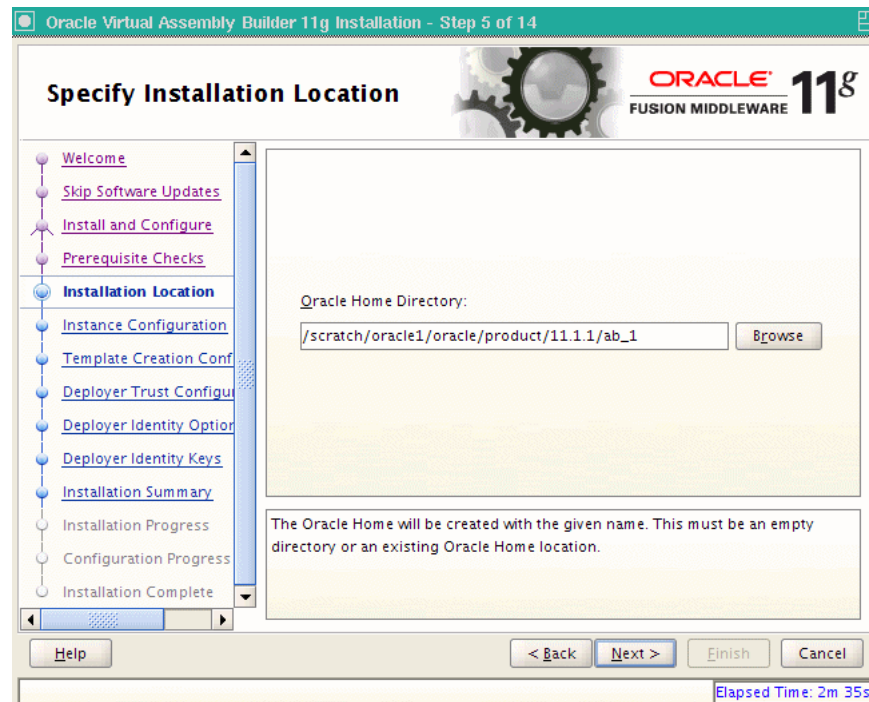
Figure 2–5 Prerequisite Checks page



4. **Prerequisites Checks.** Checks begin automatically. Progress notes inform you about what is being checked, and what the outcome of the check is. You can abort, retry, or continue checks using the buttons on the page. For example, if a physical memory check fails, you can go and correct the problem, then click **Retry** to direct Oracle Universal Installer to recheck the item.

Click **Next** when the prerequisite checks are complete. The *Specify Installation Location* page appears.

Figure 2–6 *Specify Installation Location* page



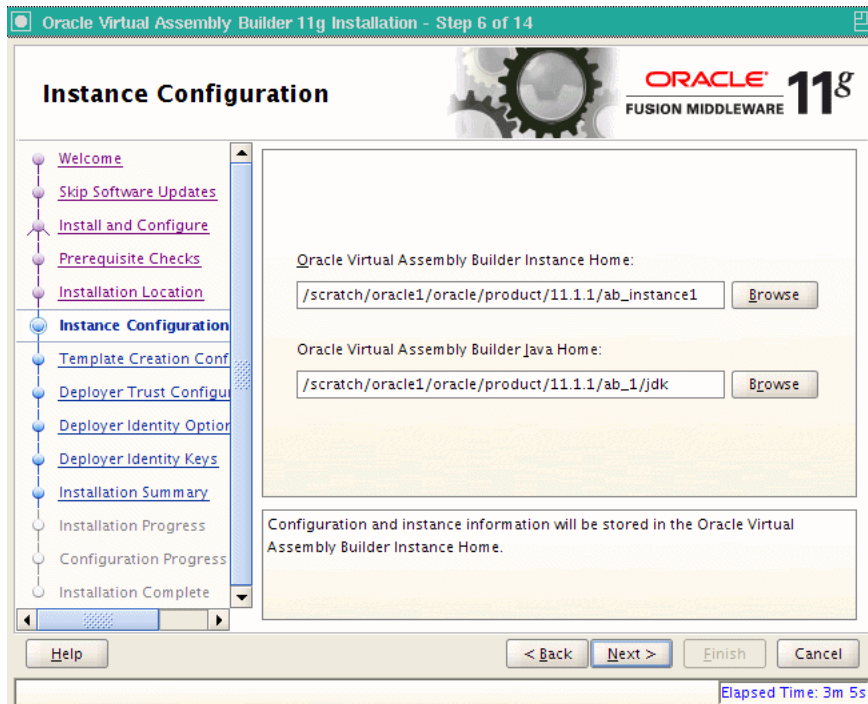
5. **Specify Installation Location.** You can select an existing Oracle Home location, or you can specify a new one. If you want to use a new directory, ensure that the directory is empty.

Note: Existing Oracle Homes:

- Installing into an existing Oracle Home is limited; that is, users can install only into the same type of Oracle Home (in this case, an OVAB Oracle Home). You cannot install into another type of Oracle Home (such as an Oracle Home for SOA).
 - Installing into an existing Oracle Home is typically done to reinstall binaries, and in some cases, to upgrade an Oracle Home from one release to another.
 - Oracle Universal Installer checks non-empty Oracle Homes to verify that the selected Oracle Home is valid.
-

Click **Next**. The *Instance Configuration* page appears.

Figure 2–7 Instance Configuration page



6. **Instance Configuration.** Enter, or choose, the *Oracle Virtual Assembly Builder Instance Home*, and the *Oracle Virtual Assembly Builder Java Home*.

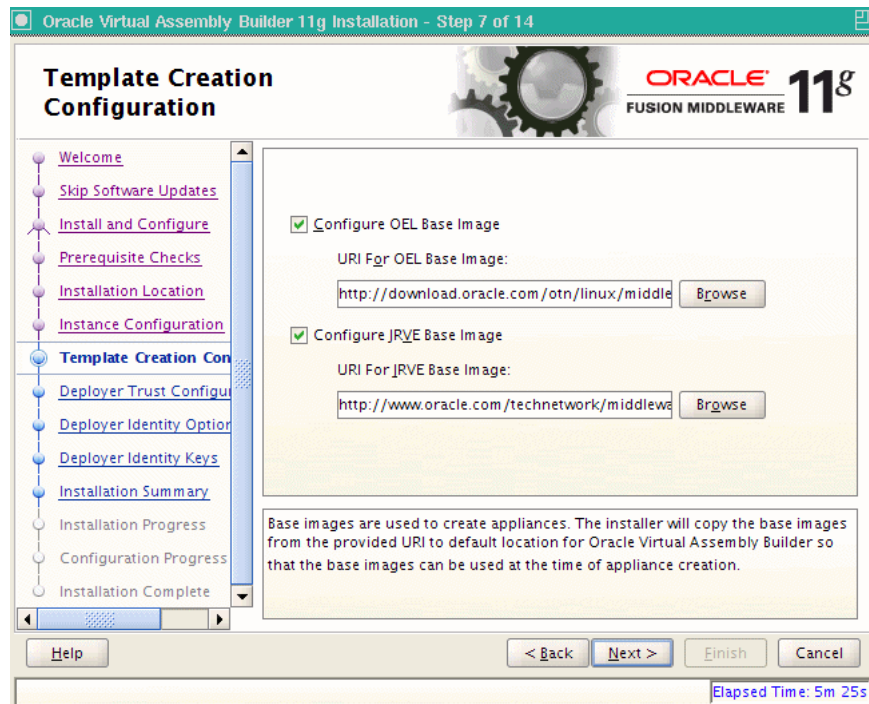
Oracle Virtual Assembly Builder Instance Home: The home of an Oracle Virtual Assembly Builder instance.

Oracle Virtual Assembly Builder Java Home: The Java Home for Oracle Virtual Assembly Builder.

Note: If you start installation without an explicit JRE location, the JAVA_HOME location will default to \$ORACLE_HOME/jdk (the location where JDK will be installed). You can change to another JDK location, in which case the JDK will NOT be installed.

Click **Next**. The *Template Creation Configuration* page appears.

Figure 2–8 Template Creation Configuration page



7. **Template Creation Configuration.** This page enables you to define base images that you will use to create new appliances. On this page, you provide the URIs for the *OEL* and *JRVE* Base Images.

Note: When you choose to configure OEL and JRVE base images, Oracle Installer copies a user-provided OEL base image in `$AB_INSTANCE/templates/baseImage/OVM/OEL` and JRVE base image in the `$AB_INSTANCE/templates/baseImage/OVM/JRVE` directory. These base images will be available as the default base images for this OVAB instance.

If you want to have base images shared across all Oracle Virtual Assembly Builder instances, do not select to configure OEL and JRVE base images here and do this after install completes:

- Create following directories inside `$ORACLE_HOME` directory:
 - `$ORACLE_HOME/templates/baseImage/OVM/OEL`
 - `$ORACLE_HOME/templates/baseImage/OVM/JRVE`
 - Copy OEL base image files (`System.img` and `vm.cfg`) into `$ORACLE_HOME/templates/baseImage/OVM/OEL` directory
 - Copy JRVE base image files (`system.img` and `vm.cfg`) into `$ORACLE_HOME/templates/baseImage/OVM/JRVE` directory
-

Note: Base images are stored in either \$AB_INSTANCE, or in \$ORACLE_HOME. Here is the order of precedence for base image detection:

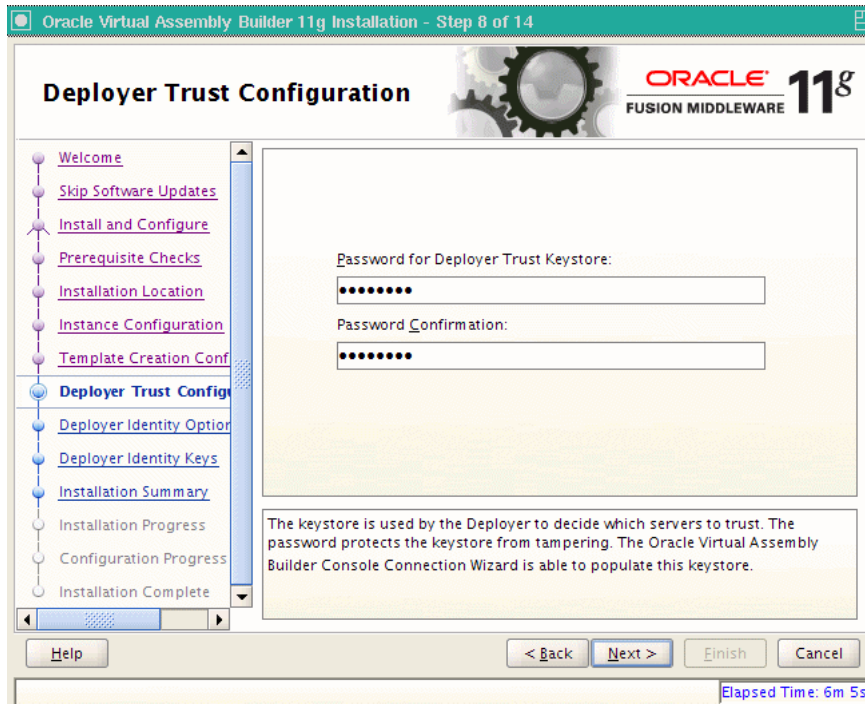
- location specified by -baseImage flag
 - \$AB_INSTANCE/templates/baseImage/OVM/[JRVE | OEL]
 - \$ORACLE_HOME/templates/baseImage/OVM/[JRVE | OEL]
-

Configure OEL Base Image: If selected, provide the URI for OEL Base Image.

Configure JRVE Base Image: If selected, provide the URI for JRVE Base Image.

After entering (or selecting) the locations, click **Next**. The *Deployer Trust Configuration* page appears.

Figure 2–9 *Deployer Trust Configuration page*

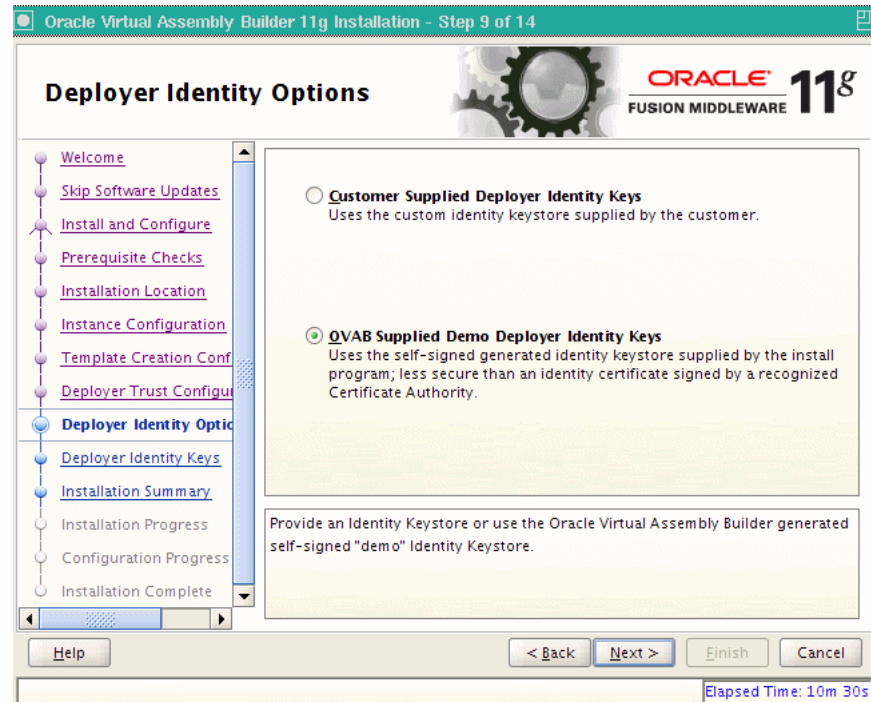


8. **Deployer Trust Configuration.** The Deployer uses this keystore to identify trusted servers.

Enter, and confirm, the password for the *Deployer Trust Keystore*.

Click **Next**. The *OVAB Supplied Demo Deployer Identity Options* page appears.

Figure 2–10 Deployer Identity Options page



9. **Deployer Identity Options.** On this page the deployer identity options are required. In order to have a valid SSL connection with Oracle Virtual Machine, the Oracle Virtual Assembly Builder Deployer must provide its identity as part of the connect. You can use your own keystore containing an identity certificate or choose the less secure option of using the Oracle Virtual Assembly Builder-generated self-signed Deployer Identity certificate. The following options are available:

- *Customer Supplied Deployer Identity Keys:* Selecting this option uses the custom identity keystore supplied by you. When you choose *Customer Supplied Deployer Identity Keys*, the *Customer Supplied Deployer Identity Keys* page appears.

Note: *Customer Supplied Deployer Identity Keys* is the default keystore option. It is much more secure than using the demo self-signed certificates.

Figure 2–11 Customer Supplied Deployer Identity Keys page

Oracle Virtual Assembly Builder 11g Installation - Step 10 of 14

Customer Supplied Deployer Identity Keys

ORACLE FUSION MIDDLEWARE 11g

[Welcome](#)
[Skip Software Updates](#)
[Install and Configure](#)
[Prerequisite Checks](#)
[Installation Location](#)
[Instance Configuration](#)
[Template Creation Conf](#)
[Deployer Trust Configu](#)
[Deployer Identity Option](#)
Deployer Identity Keys
[Installation Summary](#)
 Installation Progress
 Configuration Progress
 Installation Complete

Path to Existing Deployer Identity Keystore:
 Keystore type:
 Password for Identity Keystore:
 Password Confirmation:
 Key Alias:
 Password for Identity Key:
 Password Confirmation:

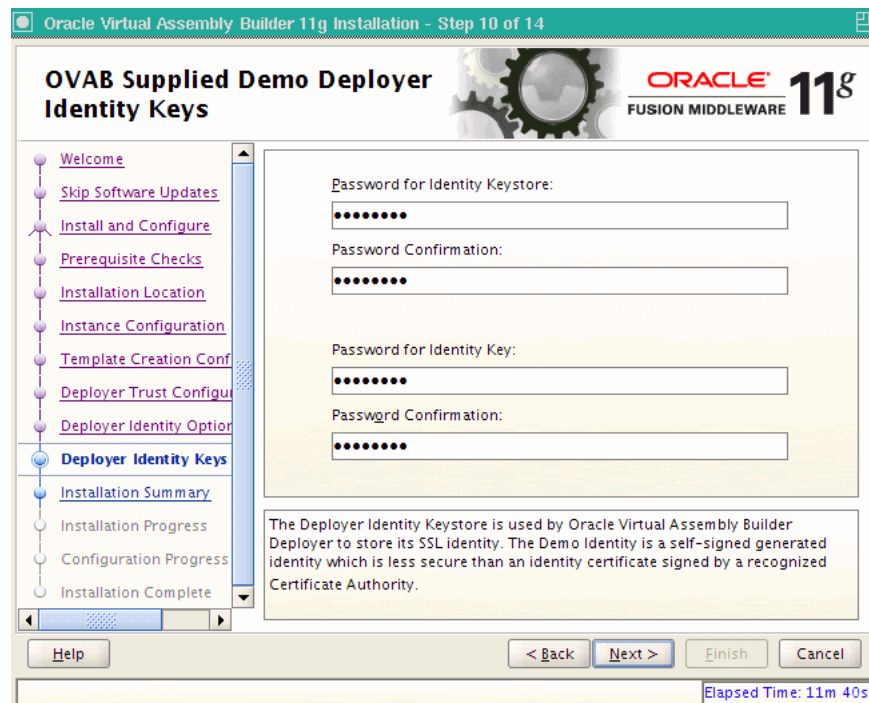
The Deployer Identity Keystore is used by Oracle Virtual Assembly Builder Deployer to store its SSL identity.

Elapsed Time: 11m 6s

Enter or select:

- Path to Existing Deployer Identity Keystore: The location of .jks file.
- Keystore Type: Defaulted to JKS (User-modifiable)
- Password for Identity Keystore (enter and confirm)
- Key Alias: Defaulted to MyKey (User-modifiable)
- Identity Key (enter and confirm)
- *Oracle Virtual Assembly Builder Supplied Demo Deployer Identity Keys*: Selecting this option uses the self-signed generated identity keystore supplied by the install program; it is less secure than an identity certificate signed by a recognized Certificate Authority. When you select *Oracle Virtual Assembly Builder Supplied Demo Deployer Identity Keys*, the *Oracle Virtual Assembly Builder Supplied Demo Deployer Identity Keys* page appears.

Figure 2–12 OVAB Supplied Demo Deployer Identity Keys

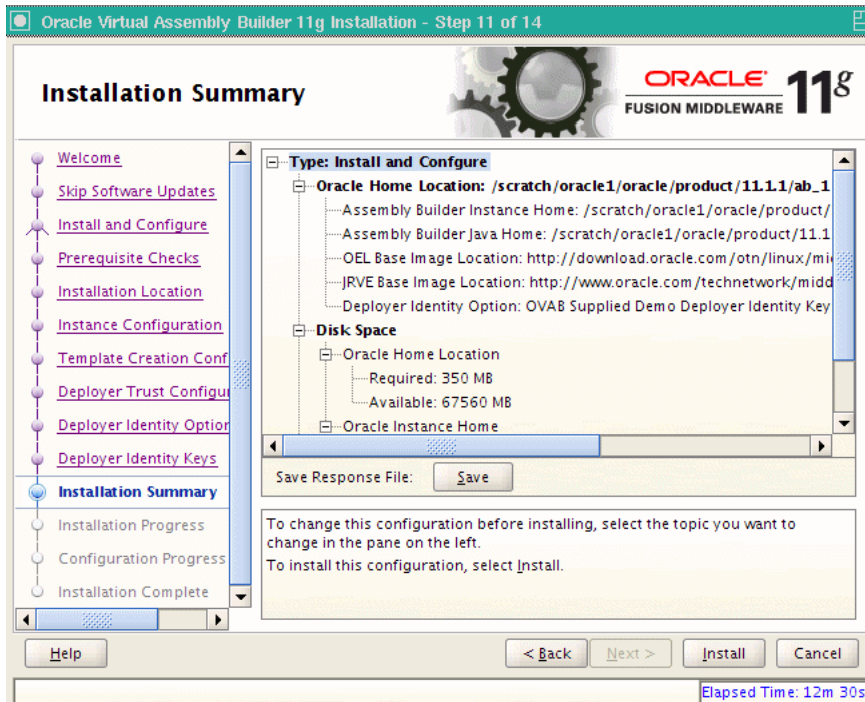


Enter or select:

- Password for Identity Keystore (enter and confirm)
- Identity Key (enter and confirm)

Click **Next**. The *Installation Summary* page appears.

Figure 2–13 Installation Summary page

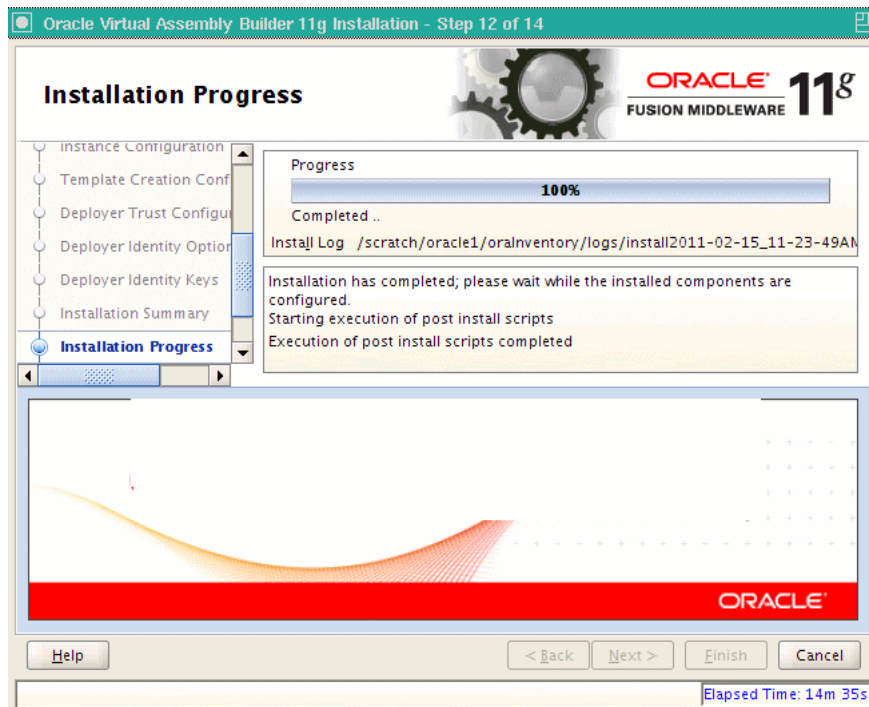


10. **Summary.** The Installation Summary page lists the components and locations for install. You can save the response file by clicking **Save**.

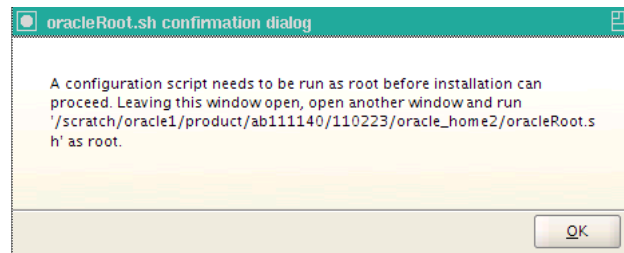
If you want to change any of your installation or configuration choices, you can select the item from the left pane, make the changes, then return to the *Summary* page.

Click **Install** to start the installation process.

11. Depending on your selections, an *Installation Progress* page appears with relevant information.

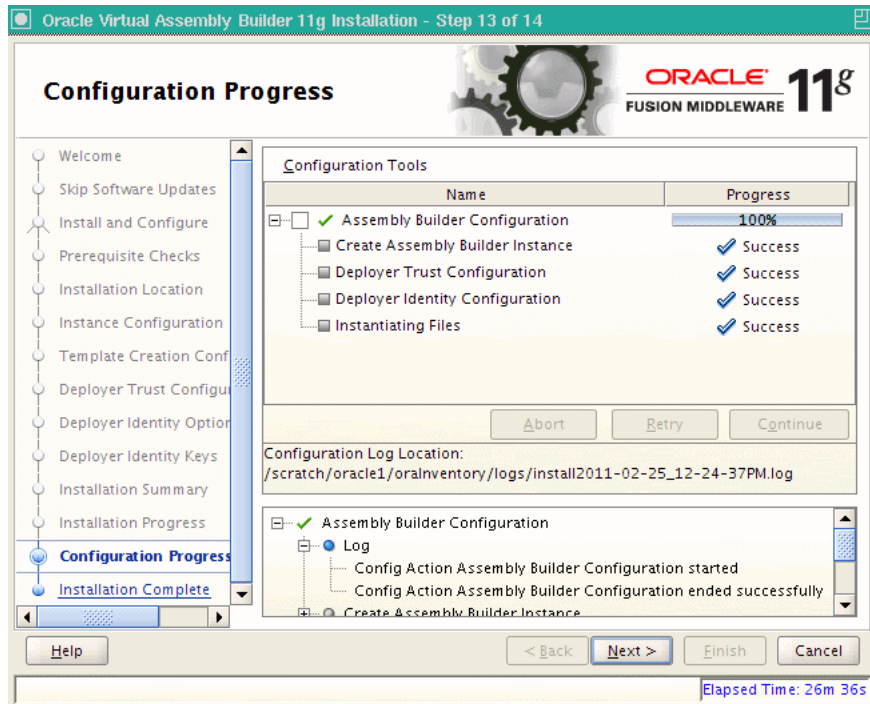
Figure 2–14 Installation Progress page

12. As installation progresses, a pop-up message will appear, instructing you to run a configuration script. Follow the instructions in the message.

Figure 2–15 Configuration script pop-up message

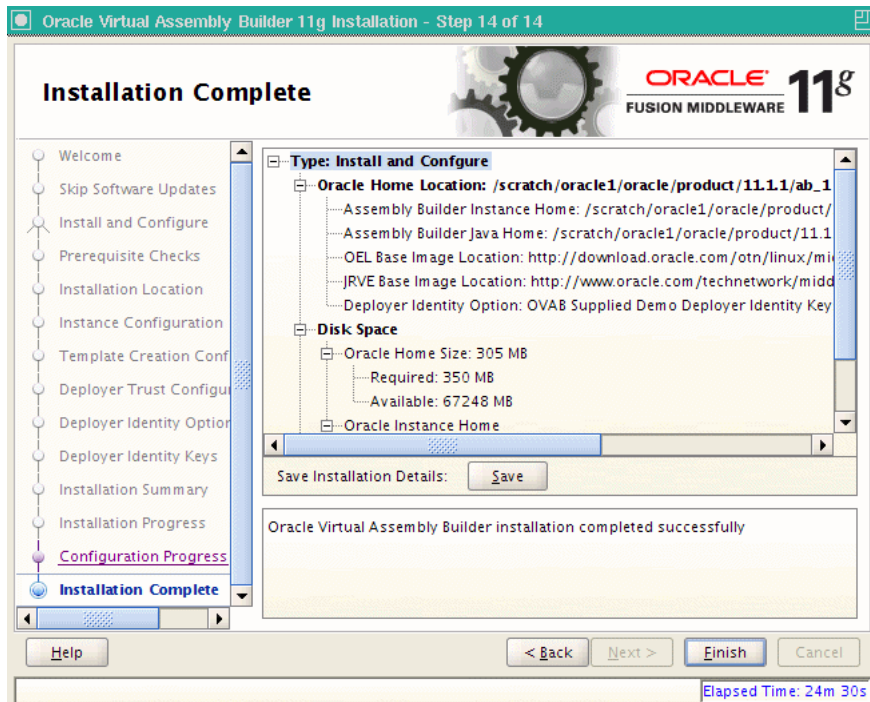
13. After you run the script, a Configuration Progress page appears.

Figure 2–16 Configuration Progress page



14. When installation is complete, the *Installation Complete* page appears.

Figure 2–17 Installation Complete page

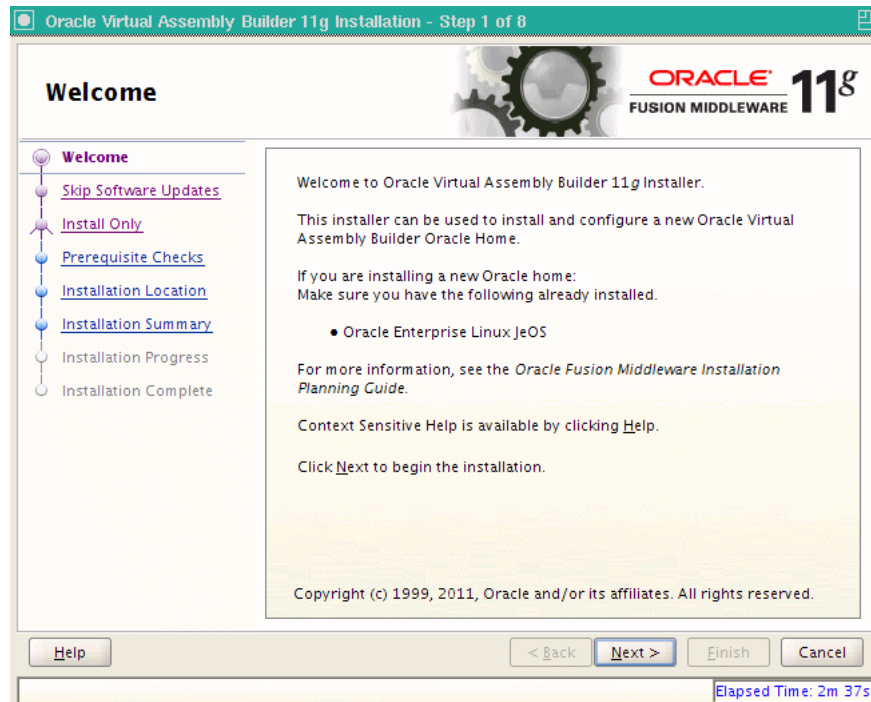


2.1.2 Install Only

This option is used to install the Oracle Virtual Assembly Builder binaries into an Oracle Home. To install Oracle Virtual Assembly Builder and configure it later, start the installer, then follow these steps:

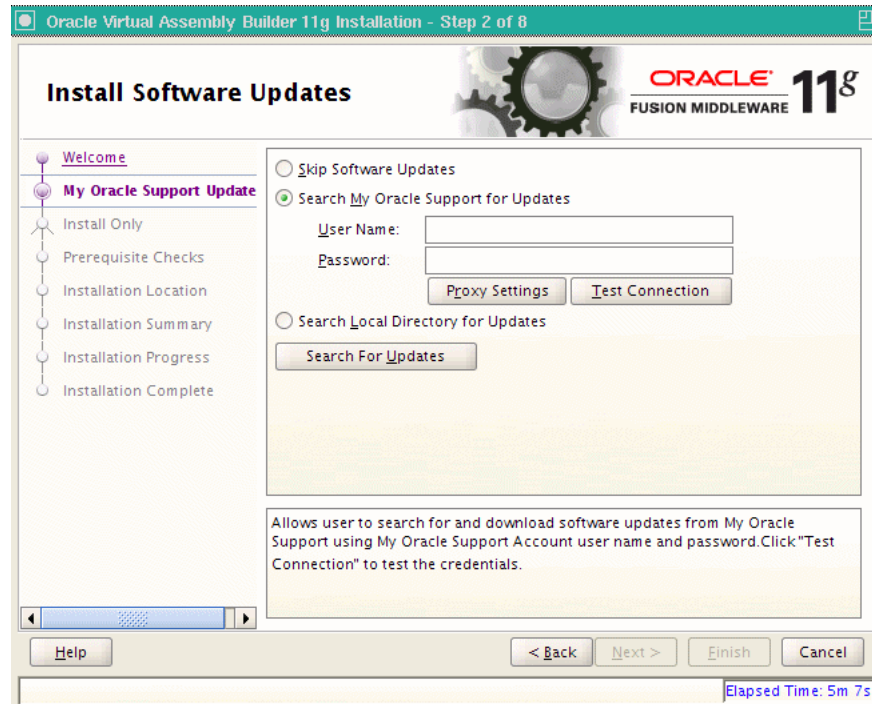
1. **Welcome.** This page introduces the installation. The flow of installation appears in the left panel, and control buttons appear along the bottom.

Figure 2–18 Welcome page



When you are ready to begin installation, click **Next**. The *Install Software Updates* page appears.

Figure 2–19 Software Updates page

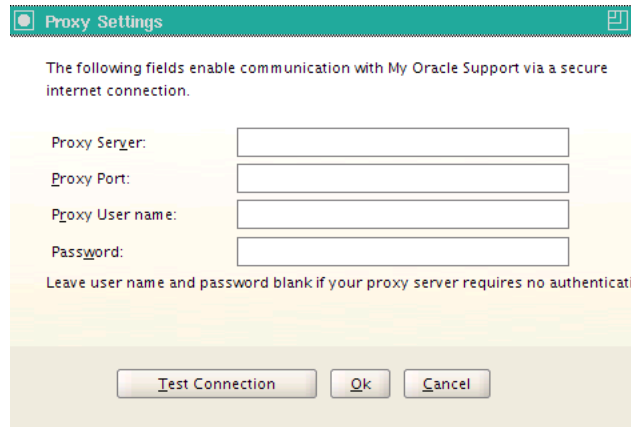


Note: Help is available on all of the pages. Use it to learn about what you can do in that page, field descriptions, possible values, and other information.

2. **Software Updates.** Before continuing with installation, you should ensure that your Oracle software is up to date. You have the option to skip this step by selecting the **Skip Software Updates** radio button, but only skip updates if you are sure that all of your software is up to date.

Enter your Oracle Support user name and password, then click **Test Connection** to test your credentials.

Click **Proxy Settings** (optional) if your computer is behind a firewall or a proxy and not in direct contact with the Internet.

Figure 2–20 Proxy Settings page


The following fields enable communication with My Oracle Support via a secure internet connection.

Proxy Server:

Proxy Port:

Proxy User name:

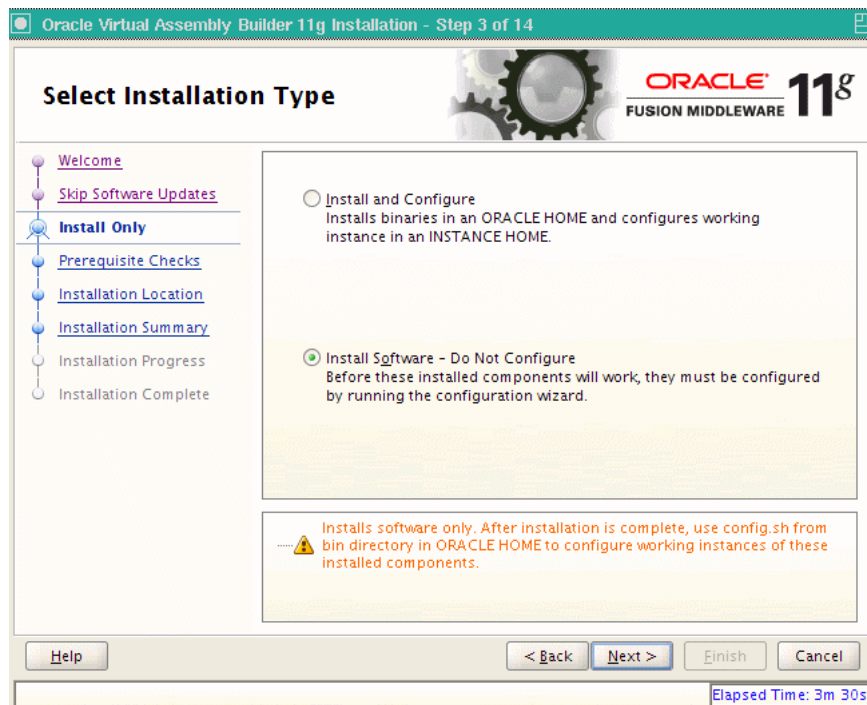
Password:

Leave user name and password blank if your proxy server requires no authentication.

Test Connection Ok Cancel

Enter proxy information and test the connection and/or click **OK**.

Click **Next**. Updates are installed, and the *Select Installation Type* page appears.

Figure 2–21 Select Installation Type page


Oracle Virtual Assembly Builder 11g Installation - Step 3 of 14


Select Installation Type

ORACLE FUSION MIDDLEWARE 11g

- Welcome
- Skip Software Updates
- Install Only**
- Prerequisite Checks
- Installation Location
- Installation Summary
- Installation Progress
- Installation Complete

Install and Configure
Installs binaries in an ORACLE HOME and configures working instance in an INSTANCE HOME.

Install Software - Do Not Configure
Before these installed components will work, they must be configured by running the configuration wizard.

 Installs software only. After installation is complete, use config.sh from bin directory in ORACLE HOME to configure working instances of these installed components.

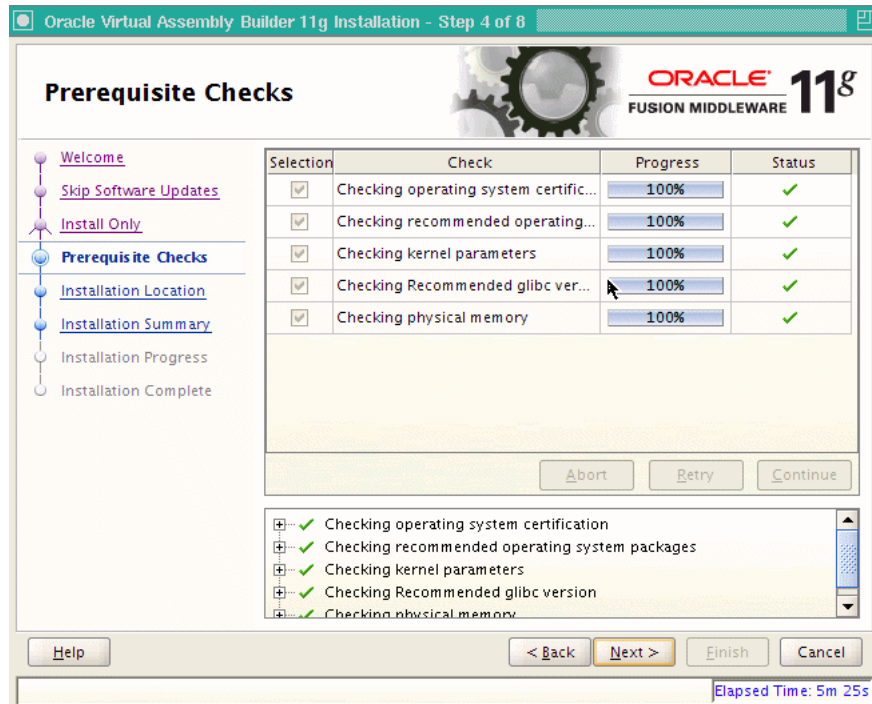
Help < Back Next > Finish Cancel

Elapsed Time: 3m 30s

- Installation Type.** Use this page to choose whether you want to install and configure at this time, or just to install and configure at a later time. Since this section covers install only, choose the **Install Software - Do Not Configure** radio button.

A message appears reminding you that you'll need to use manual configuration steps later to configure your software. The *Prerequisite Checks* page appears.

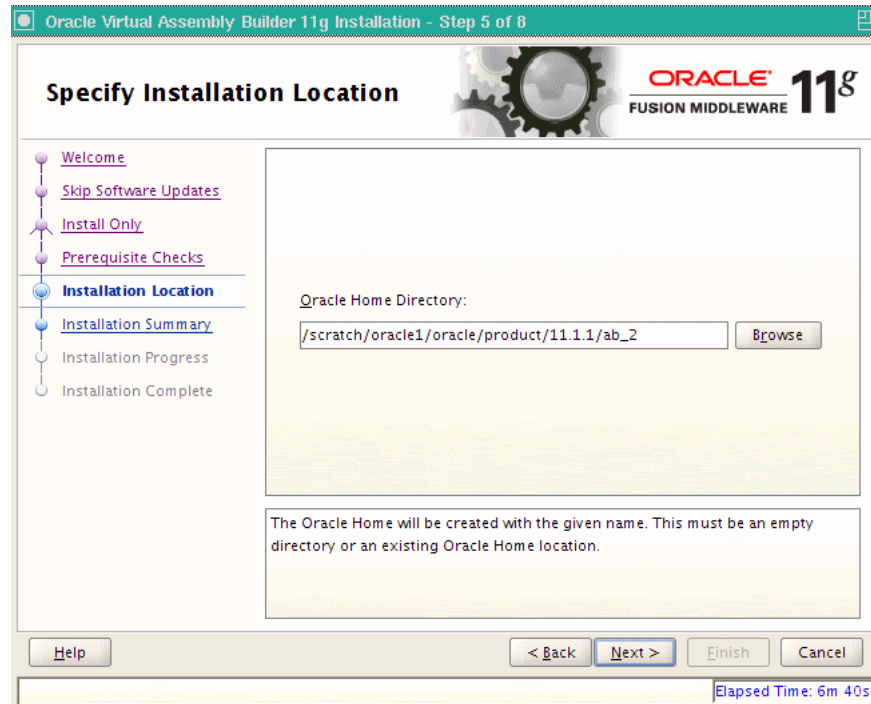
Figure 2–22 Prerequisite Checks page



4. **Prerequisites Checks.** Checks begin automatically. Progress notes inform you about what is being checked, and what the outcome of the check is. You can abort, retry, or continue checks using the buttons on the page. For example, if a physical memory check fails, you can go and correct the problem, then click **Retry** to direct Oracle Universal Installer to recheck the item.

Click **Next** when the prerequisite checks are complete. The *Specify Installation Location* page appears.

Figure 2–23 Specify Installation Location page



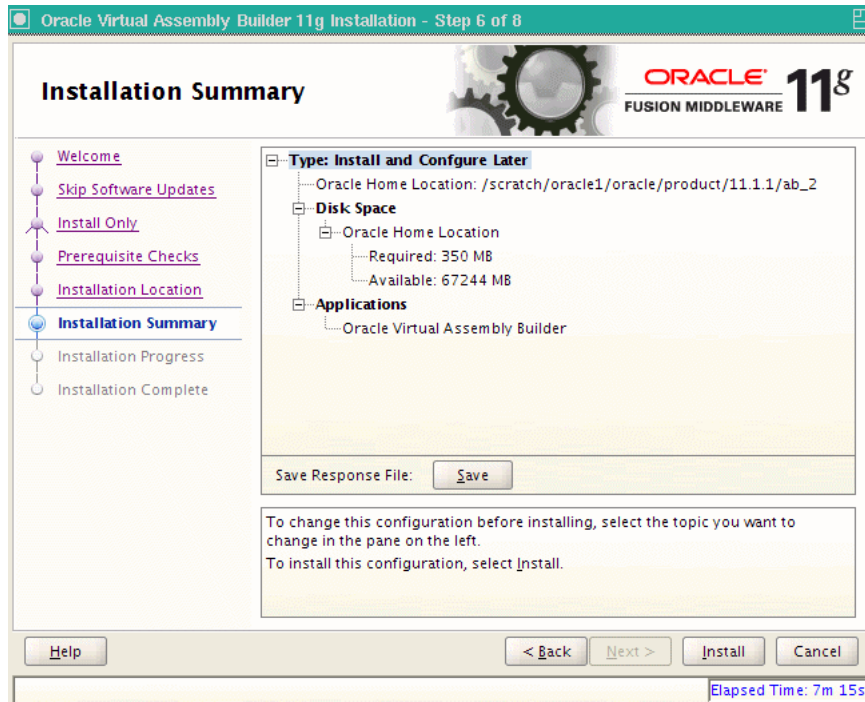
5. **Specify Installation Location.** You can select an existing Oracle Home location, or you can specify a new one. If you want to use a new directory, ensure that the directory is empty.

Note: Existing Oracle Homes:

- Installing into an existing Oracle Home is limited; that is, users can install only into the same type of Oracle Home (in this case, an OVAB Oracle Home). You cannot install into another type of Oracle Home (such as an Oracle Home for SOA).
 - Installing into an existing Oracle Home is typically done to reinstall binaries, and in some cases, to upgrade an Oracle Home from one release to another.
 - Oracle Universal Installer checks non-empty Oracle Homes to verify that the selected Oracle Home is valid.
-

Click **Next**. The *Installation Summary* page appears.

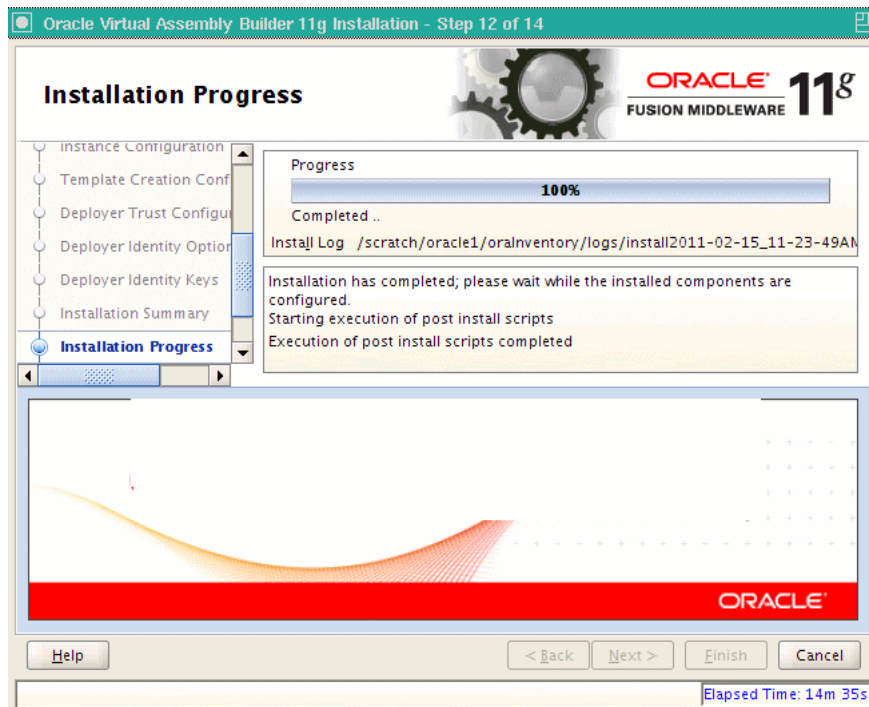
Figure 2–24 Installation Summary page



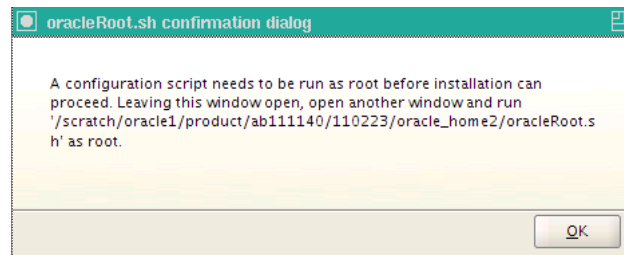
6. **Summary.** The *Installation Summary* page lists the components and locations for install. You can save the response file by clicking **Save**.

If you want to change any of your installation or configuration choices, you can select the item from the left pane, make the changes, then return to the *Installation Summary* page.

Click **Install** to start the installation process. An *Installation Progress* page appears with relevant information.

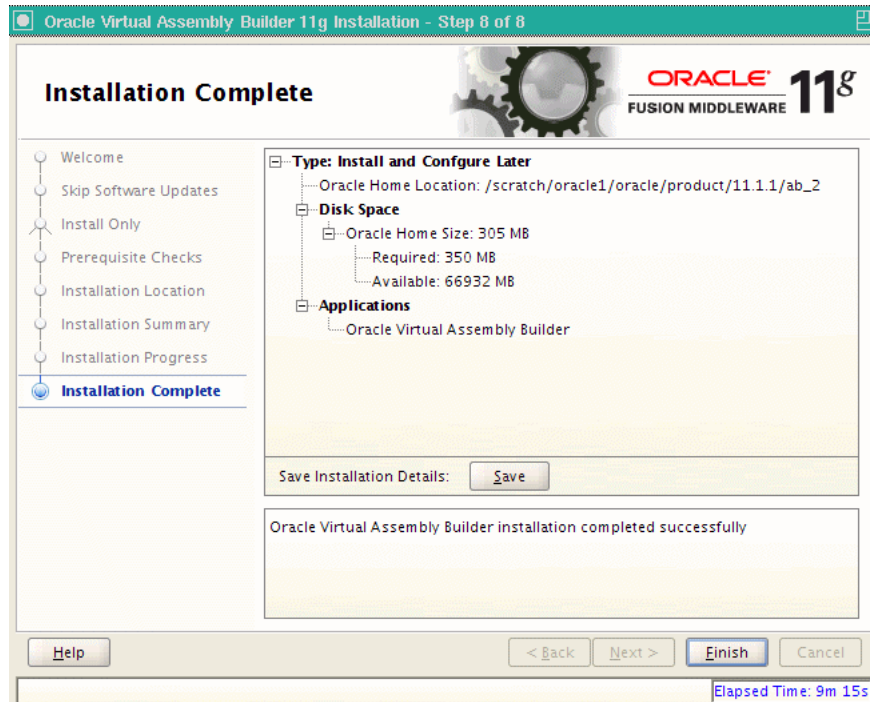
Figure 2–25 Installation Progress page

7. As installation progresses, a pop-up message will appear, instructing you to run a configuration script. Follow the instructions in the message.

Figure 2–26 Configuration script pop-up message

8. When installation is complete, the *Installation Complete* page appears.

Figure 2–27 Installation Complete page

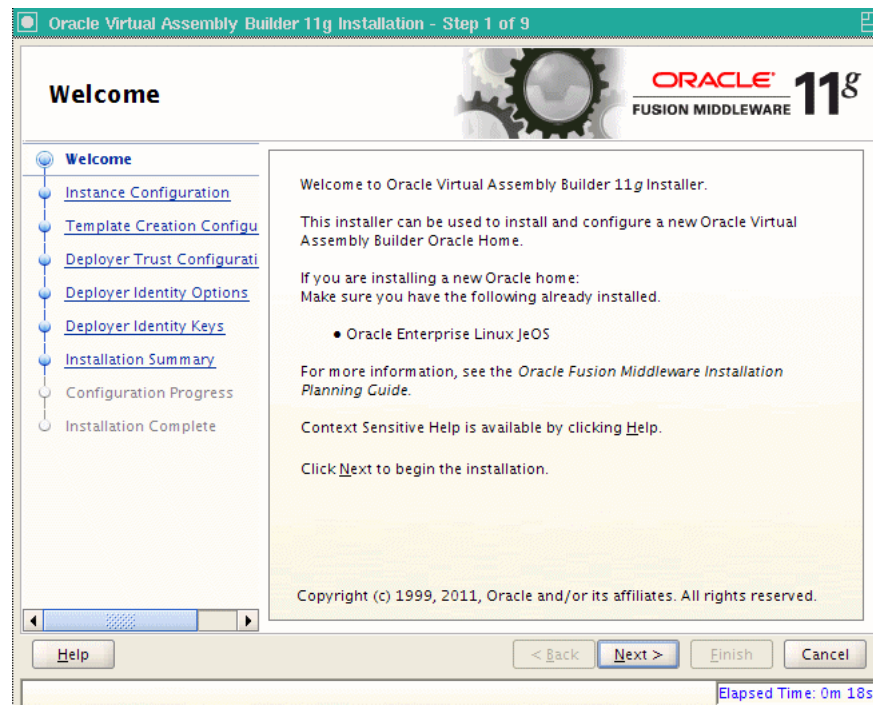


2.1.3 Configure Only

This Installation option (in which only instance configuration occurs) is available when a user launches the Configuration Wizard after completing a software installation. To begin Configure Only, execute `config.sh` from the `$ORACLE_HOME/bin` folder. Follow these steps:

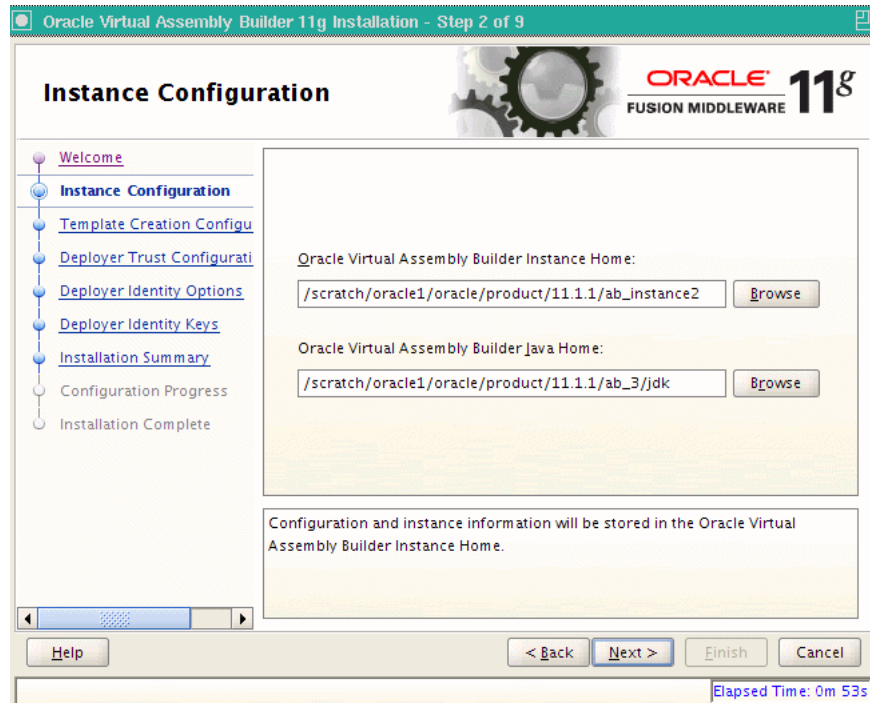
1. **Welcome.** This page introduces the installation. The flow of installation appears in the left panel, and control buttons appear along the bottom.

Figure 2–28 Installation Welcome page



When you are ready to begin installation, click **Next**. The *Instance Configuration* page appears.

Note: Help is available on all of the pages. Use it to learn about what you can do in that page, field descriptions, possible values, and other information.



2. **Instance Configuration.** Enter, or choose, the *Oracle Virtual Assembly Builder Instance Home*, and the *Oracle Virtual Assembly Builder Java Home*.

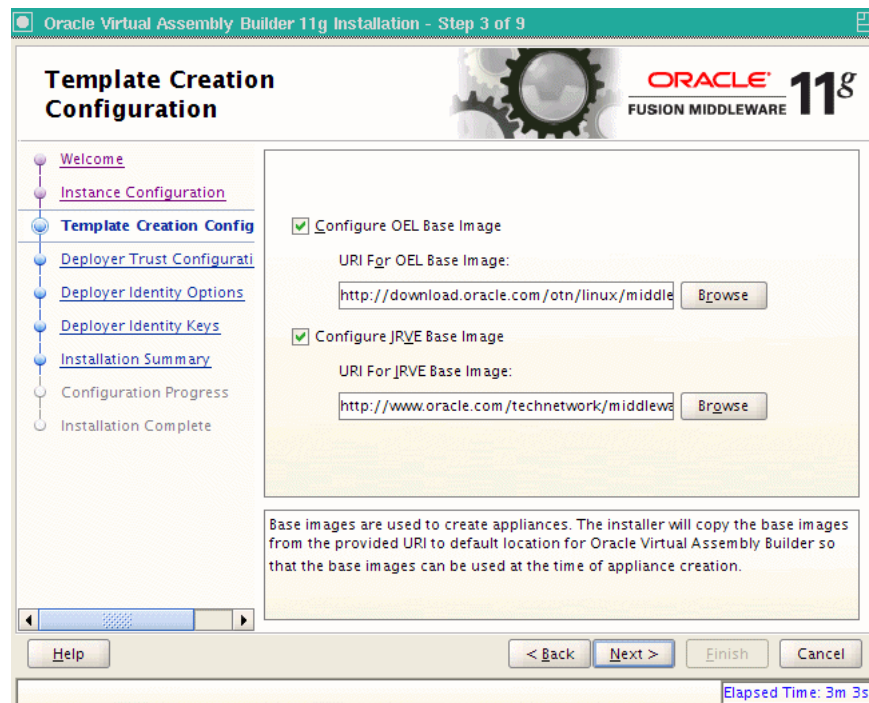
Oracle Virtual Assembly Builder Instance Home: The home of an Oracle Virtual Assembly Builder instance.

Oracle Virtual Assembly Builder Java Home: The Java Home for Oracle Virtual Assembly Builder.

Note: If you start installation without an explicit JRE location, the JAVA_HOME location will default to \$ORACLE_HOME/jdk (the location where JDK will be installed). You can change to another JDK location, in which case the JDK will NOT be installed.

Click **Next**. The *Template Creation Configuration* page appears.

Figure 2–29 Template Creation Configuration page



3. **Template Creation Configuration.** This page enables you to define base images that you will use to create new appliances. On this page, you provide the URIs for the *OEL* and *JRVE* Base Images.

Note: When you choose to configure OEL and JRVE base images, Oracle Installer copies a user-provided OEL base image in `$AB_INSTANCE/templates/baseImage/OVM/OEL` and JRVE base image in the `$AB_INSTANCE/templates/baseImage/OVM/JRVE` directory. These base images will be available as the default base images for this OVAB instance.

If you want to have base images shared across all Oracle Virtual Assembly Builder instances, do not select to configure OEL and JRVE base images here and do this after install completes:

- Create following directories inside `$ORACLE_HOME` directory:
 - `$ORACLE_HOME/templates/baseImage/OVM/OEL`
 - `$ORACLE_HOME/templates/baseImage/OVM/JRVE`
 - Copy OEL base image files (System.img and vm.cfg) into `$ORACLE_HOME/templates/baseImage/OVM/OEL` directory
 - Copy JRVE base image files (system.img and vm.cfg) into `$ORACLE_HOME/templates/baseImage/OVM/JRVE` directory
-

Note: Base images are stored in either \$AB_INSTANCE, or in \$ORACLE_HOME. Here is the order of precedence for base image detection:

- location specified by -baseImage flag
- \$AB_INSTANCE/templates/baseImage/OVM/[JRVE|OEL]
- \$ORACLE_HOME/templates/baseImage/OVM/[JRVE|OEL]

Configure OEL Base Image: If selected, provide the URI for OEL Base Image.

Configure JRVE Base Image: If selected, provide the URI for JRVE Base Image.

After entering (or selecting) the locations, click **Next**. The *Deployer Trust Configuration* page appears.

Figure 2–30 *Deployer Trust Configuration page*



4. **Deployer Trust Configuration.** The Deployer uses this keystore to identify trusted servers.

Enter, and confirm, the password for the *Deployer Trust Keystore*.

On this page the deployer identity options are required. When the code running in Oracle Virtual Machine connects to the Oracle Virtual Assembly Builder Deployer using https to retrieve templates and pass phone home information, the Deployer's https server must pass its identity to the client. You can use the Oracle Virtual Assembly Builder-generated Deployer Identity (signed by the root certificate) or supply your own keystore. The following options are available:

- *Customer Supplied Deployer Identity Keys:* Selecting this option uses the custom identity keystore supplied by the customer. The keystore details are asked in a subsequent screen. This option will be the default option in the screen.

- *Oracle Virtual Assembly Builder Supplied Demo Deployer Identity Keys*: Selecting this option uses the self-signed generated identity keystore supplied by the install program; it is less secure than an identity certificate signed by a recognized Certificate Authority.

Click **Next**. The *OVAB Supplied Demo Deployer Identity Keys* page appears.

Figure 2–31 *OVAB Supplied Demo Deployer Identity Keys* page



5. **Demo Deployer Identity Keys.** This screen will appear only if you selected *Customer Supplied Deployer Identity Keys* in the previous screen. The Keystores are used by the Deployer to store SSL credentials. Select *Customer Supplied Deployer Identity Keys* (default), or *Oracle Virtual Assembly Builder Supplied Demo Deployer Identity Keys*.

After choosing your option, click **Next**. Depending on which option you chose, different pages will appear (for Customer-Supplied or OVAB-Supplied).

If you choose *Customer Supplied Deployer Identity Keys* enter or select:

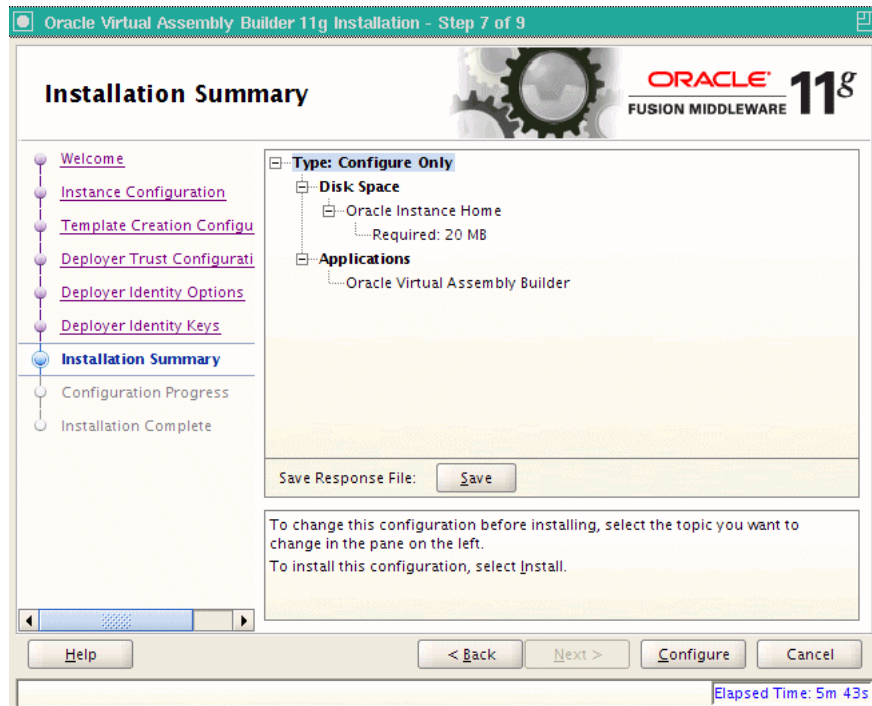
- Path to Existing Deployer Identity Keystore: The location of .jks file.
- Keystore Type: Defaulted to JKS (User-modifiable)
- Password for Identity Keystore (enter and confirm)
- Key Alias: Defaulted to MyKey (User-modifiable)
- Identity Key (enter and confirm)

If you choose *Oracle Virtual Assembly Builder Supplied Demo Deployer Identity Keys* enter or select:

- Password for Identity Keystore (enter and confirm)
- Identity Key (enter and confirm)

Click **Next**. The *Installation Summary* page appears.

Figure 2–32 *Installation Summary* page



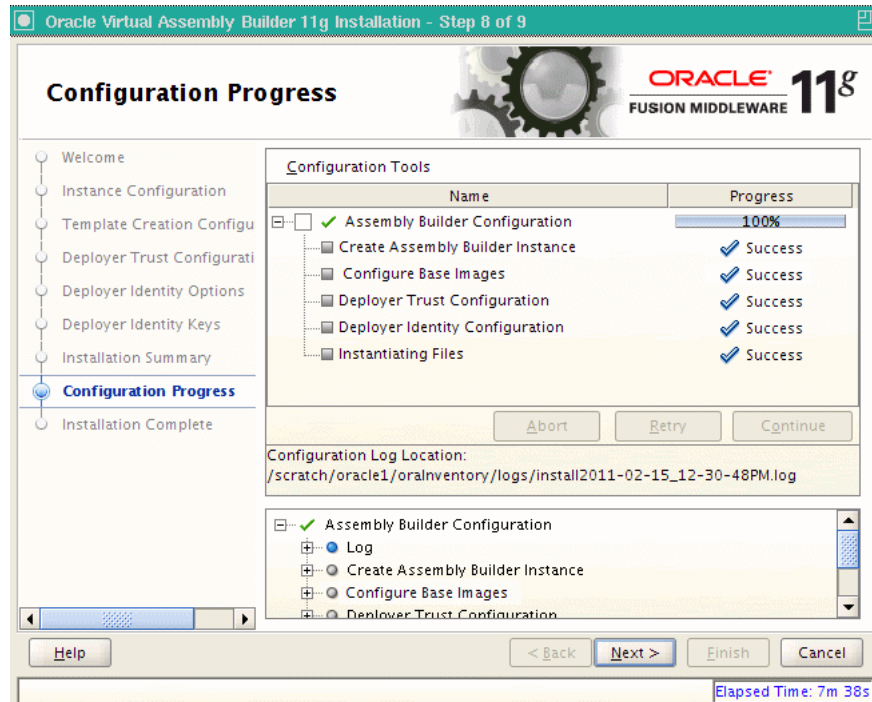
6. **Summary.** The *Installation Summary* page lists the components and locations for install. You can save the response file by clicking **Save**.

If you want to change any of your installation or configuration choices, you can select the item from the left pane, make the changes, then return to the *Summary* page.

Click **Configure** to start the configuration process.

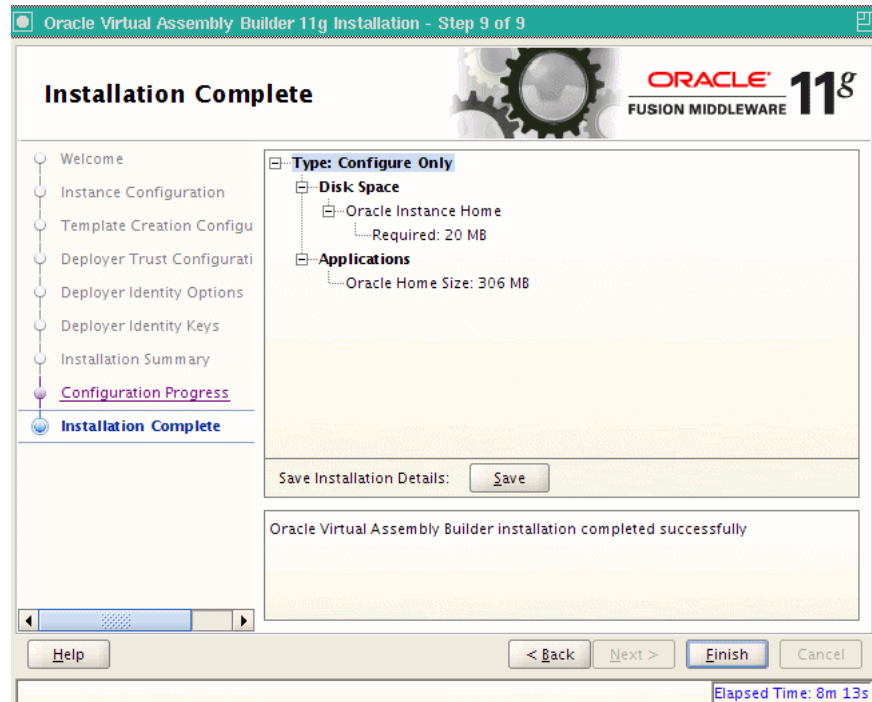
7. A Configuration Progress page appears.

Figure 2–33 Configuration Progress page



8. When installation is complete, the *Installation Complete* page appears.

Figure 2–34 Installation Complete page



2.1.4 Silent Installation

Silent installation is supported with a set of response files covering all user inputs. The templates of silent response files are provided in the Disk1/stage/Response folder.

Silent Installation is launched by executing

```
/runInstaller -silent -responseFile <absolute path to response file>
```

2.2 Deinstall

To deinstall Oracle Virtual Assembly Builder, execute this command:

```
$ORACLE_HOME/oui/bin/runInstaller -deinstall
```

In silent mode:

```
$ORACLE_HOME/oui/bin/runInstaller -deinstall -silent -responseFile <absolute path of response file>
```

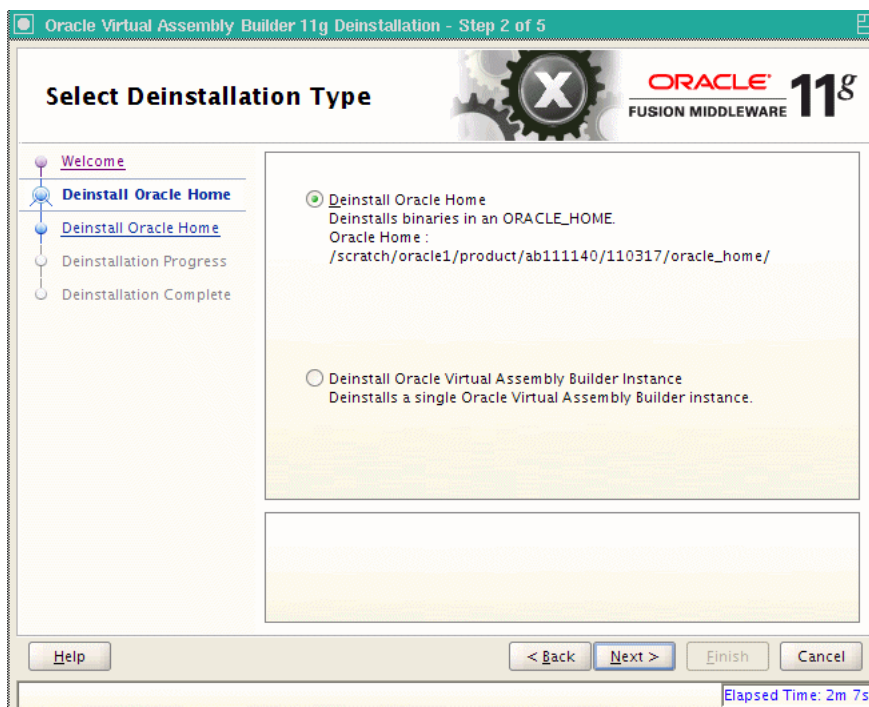
When you execute the deinstall command, Oracle Universal Installer starts. The Welcome page appears.

Figure 2–35 Deinstall Welcome page



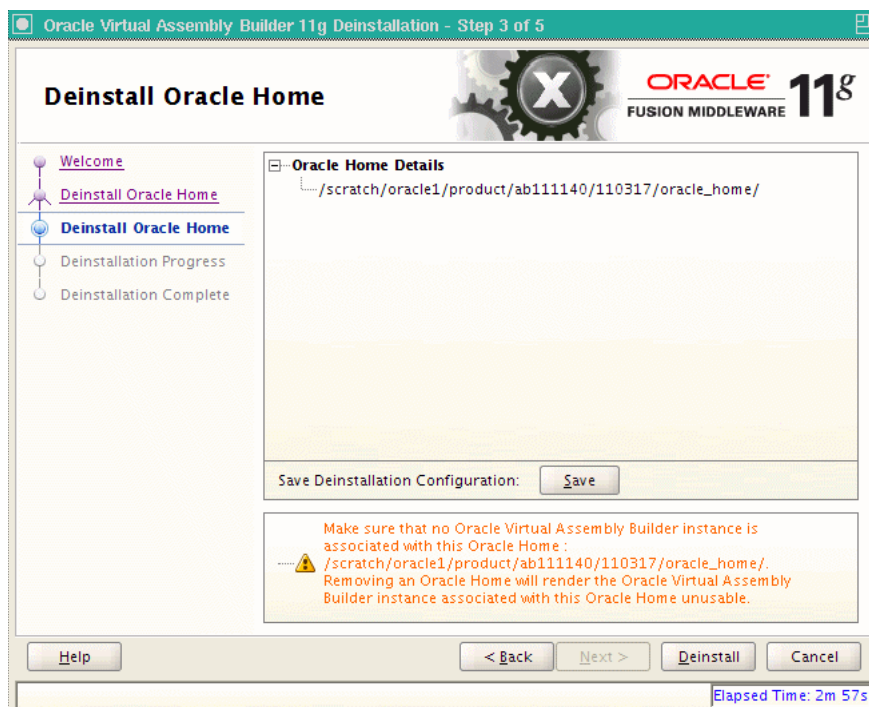
1. Click **Next**. The *Select Deinstallation Type* page appears.

Figure 2–36 Select Deinstallation Type page



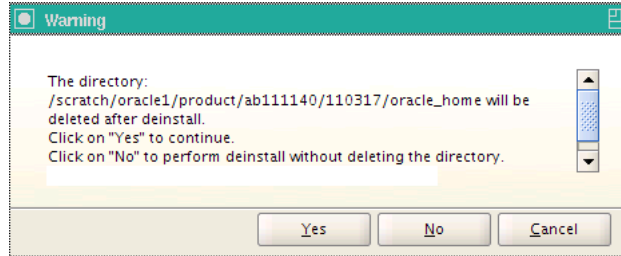
2. Depending on what you want to deinstall, different pages will appear.
 - If you choose to deinstall Oracle Home, the *Deinstall Oracle Home* page appears:

Figure 2–37 Deinstall Oracle Home page



Click **Deinstall**. A warning appears informing you of the consequences of your actions, and giving you the opportunity to deinstall without removing the Oracle Home.

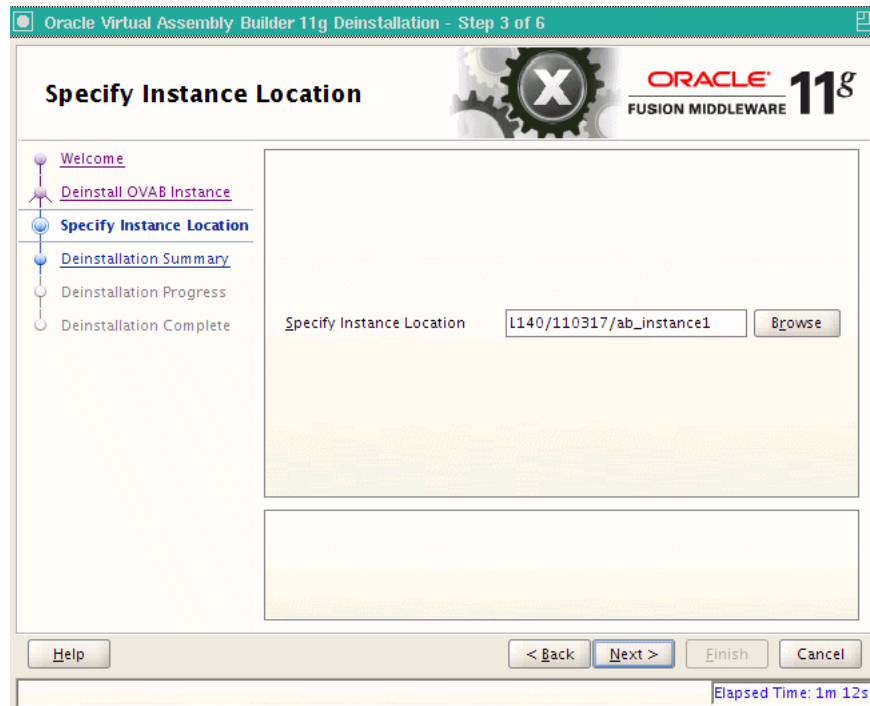
Figure 2–38 Deinstallation Warning Pop-up



Choose **Yes** or **No**. The *Deinstallation Progress* page appears (see [Figure 2–41](#)).

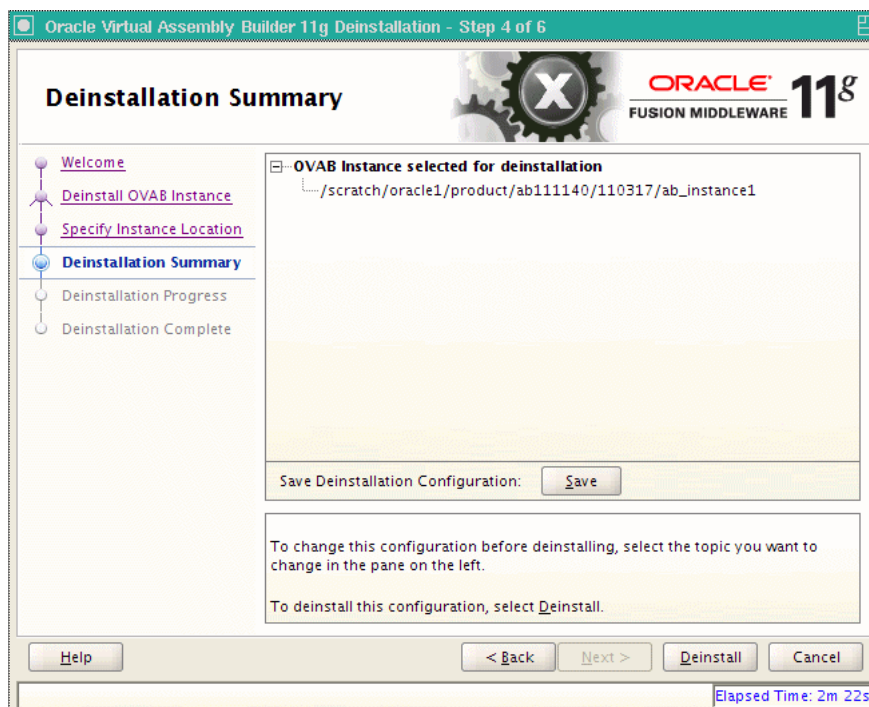
- If you choose to deinstall the Oracle Virtual Assembly Builder instance, the *Specify Instance Location* page appears:

Figure 2–39 Specify Instance Location page



Enter (or browse to and choose) the Oracle Virtual Assembly Builder instance location, then click **Next**. The *Deinstallation Summary* page appears.

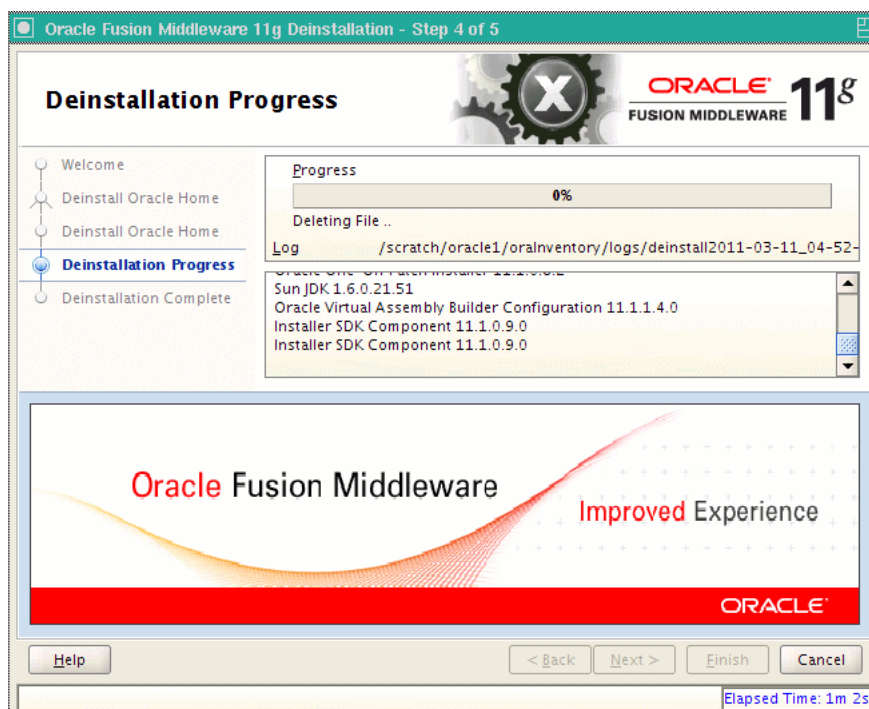
Figure 2–40 Oracle Virtual Assembly Builder Deinstallation Summary page



Click **Deinstall**. The *Deinstallation Progress* page appears.

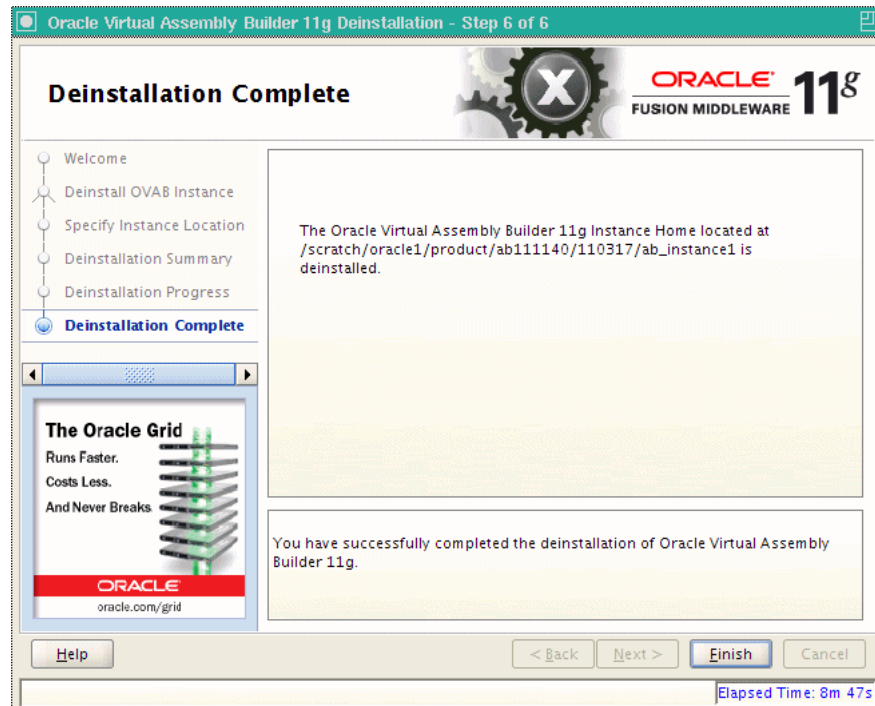
The content of the Deinstallation Progress page varies according to your selections.

Figure 2–41 Deinstallation Progress page



- When the deinstallation progress is complete, click **Finish**. The Deinstallation Complete page appears.

Figure 2–42 Deinstallation Complete page



- When deinstallation is complete, the *Deinstallation Complete* page appears. Click **Finish**.

Index

C

certification, 1-3

I

install Oracle Virtual Assembly Builder, 2-1

installation

roadmap, 1-2

installation types

configure only, 2-22

deinstall, 2-30

install and configure, 2-1

install only, 2-15

silent, 2-30

J

Java Development Kit, 1-3

M

modifyjeos, 1-6

O

Oracle Enterprise Linux JeOS, 1-3

P

prerequisites, 1-1

R

reference systems

Oracle Coherence*Web, 1-2

Oracle HTTP Server, 1-3

Oracle RDBMS, 1-2

Oracle Web Cache, 1-2

Oracle WebLogic Server, 1-3

supported, 1-2

requirements

base image template sizing, 1-2

deployment, 1-1

introspection, 1-2

SSH port forwarding, 1-2

system, 1-3

Unzip utility, 1-2

virtual to virtual introspection, 1-1

S

security, 1-1

system base images, 1-4

system requirements, 1-3

