



Sun StorageTek™ Business Analytics Host Statistics Agent Installation Guide

Release 5.1

Sun Microsystems, Inc.
www.sun.com

Part No. 819-7207-10
November 2006, Revision 01

Submit comments about this document at: <http://www.sun.com/hwdocs/feedback>

Copyright © 2006 Sun Microsystems, Inc., 4150 Network Circle, Santa Clara, California 95054, U.S.A. All rights reserved.

U.S. Government Rights - Commercial software. Government users are subject to the Sun Microsystems, Inc. standard license agreement and applicable provisions of the FAR and its supplements.

Parts of the product may be derived from Berkeley BSD systems, licensed from the University of California. UNIX is a registered trademark in the U.S. and in other countries, exclusively licensed through X/Open Company, Ltd. Sun,

Sun Microsystems, the Sun logo, Java, Jiro, Solaris, Sun StorEdge, Sun StorageTek and StorageTek are trademarks or registered trademarks of Sun Microsystems, Inc. in the U.S. and other countries.

Products covered by and information contained in this service manual are controlled by U.S. Export Control laws and may be subject to the export or import laws in other countries. Nuclear, missile, chemical biological weapons or nuclear maritime end uses or end users, whether direct or indirect, are strictly prohibited. Export or reexport to countries subject to U.S. embargo or to entities identified on U.S. export exclusion lists, including, but not limited to, the denied persons and specially designated nationals lists is strictly prohibited.

DOCUMENTATION IS PROVIDED "AS IS" AND ALL EXPRESS OR IMPLIED CONDITIONS, REPRESENTATIONS AND WARRANTIES, INCLUDING ANY IMPLIED WARRANTY OF MERCHANTABILITY, FITNESS FOR A PARTICULAR PURPOSE OR NON-INFRINGEMENT, ARE DISCLAIMED, EXCEPT TO THE EXTENT THAT SUCH DISCLAIMERS ARE HELD TO BE LEGALLY INVALID.

Copyright © 2006 Sun Microsystems, Inc., 4150 Network Circle, Santa Clara, California 95054, Etats-Unis. Tous droits réservés.

Des parties de ce produit pourront être dérivées des systèmes Berkeley BSD licenciés par l'Université de Californie. UNIX est une marque déposée aux Etats-Unis et dans d'autres pays et licenciée exclusivement par X/Open Company, Ltd. Sun,

Sun Microsystems, le logo Sun, Java, Jiro, Solaris, Sun StorEdge, Sun StorageTek et StorageTek sont des marques de fabrique ou des marques déposées de Sun Microsystems, Inc. aux Etats-Unis et dans d'autres pays. see above

Les produits qui font l'objet de ce manuel d'entretien et les informations qu'il contient sont régis par la législation américaine en matière de contrôle des exportations et peuvent être soumis au droit d'autres pays dans le domaine des exportations et importations. Les utilisations finales, ou utilisateurs finaux, pour des armes nucléaires, des missiles, des armes biologiques et chimiques ou du nucléaire maritime, directement ou indirectement, sont strictement interdites. Les exportations ou réexportations vers des pays sous embargo des Etats-Unis, ou vers des entités figurant sur les listes d'exclusion d'exportation américaines, y compris, mais de manière non exclusive, la liste de personnes qui font l'objet d'un ordre de ne pas participer, d'une façon directe ou indirecte, aux exportations des produits ou des services qui sont régis par la législation américaine en matière de contrôle des exportations et la liste de ressortissants spécifiquement désignés, sont rigoureusement interdites.

LA DOCUMENTATION EST FOURNIE "EN L'ETAT" ET TOUTES AUTRES CONDITIONS, DECLARATIONS ET GARANTIES EXPRESSES OU TACITES SONT FORMELLEMENT EXCLUES, DANS LA MESURE AUTORISEE PAR LA LOI APPLICABLE, Y COMPRIS NOTAMMENT TOUTE GARANTIE IMPLICITE RELATIVE A LA QUALITE MARCHANDE, A L'APTITUDE A UNE UTILISATION PARTICULIERE OU A L'ABSENCE DE CONTREFACON.



Please
Recycle



Adobe PostScript

Contents

Preface v

Introduction to the Host Statistics Agent 1

Automatic and Static Agent Registration 2

Host Statistics Agent Matrix 3

Host Statistics Agent Table 4

Solaris Installation 5

IBM AIX Host Statistics Agent Installation 7

HP-UX Host Statistics Agent Installation 8

Verifying the Host Statistics Agent 9

Verifying Management Console Functionality 12

Host Statistics Agent Troubleshooting 14

Uninstalling the Host Statistics Agent - Solaris 16

Uninstalling Agents - Non-Solaris UNIX Host 17

Reinstalling Host Statistics Agent - Non-Solaris UNIX Host 17

Preface

Sun StorageTek Business Analytics software enables you to visualize and manage multi-vendor, multi-site storage environments. From one central location, you can discover storage assets, track storage utilization, recover lost capacity, and verify that data is protected, thereby reducing storage costs and improving operational efficiency.

The *Sun StorageTek Business Analytics Host Statistics Agent Installation Guide* describes how to install, configure, and verify the host statistics agent, which reports configuration, CPU utilization, adapter I/O statistics, and memory utilization for the supported server.

Typographic Conventions

Typeface*	Meaning	Examples
AaBbCc123	The names of commands, files, and directories; on-screen computer output.	Edit your <code>.login</code> file. Use <code>ls -a</code> to list all files. % You have mail.
AaBbCc123	What you type, when contrasted with on-screen computer output.	% su Password:
<i>AaBbCc123</i>	Book titles, new words or terms, words to be emphasized. Replace command-line variables with real names or values.	Read Chapter 6 in the <i>User's Guide</i> . These are called <i>class</i> options. You <i>must</i> be superuser to do this. To delete a file, type <code>rm filename</code> .

* The settings on your browser might differ from these settings.

Related Documentation

The documents listed as online are available at:

<http://www.sun.com/products/storage>

Application	Title	Part Number	Format	Location
Installation of the main product	<i>Sun StorageTek Business Analytics Installation Guide</i>	819-7181-10	Printed PDF HTML	Shipping kit Online
	<i>Sun StorageTek Business Analytics Getting Started Guide</i>	819-7190-10	Printed PDF HTML	Shipping kit Online
Use of the Management Console administrative menu	<i>Sun StorageTek Business Analytics Administration Guide</i>	819-7183-10	Printed PDF HTML	Shipping kit Online
Late-breaking information not included in the information set	<i>Sun StorageTek Business Analytics Release Notes</i>	819-7203-10	PDF HTML	Online
Planning for customized implementations	<i>Sun StorageTek Business Analytics Concepts and Planning Guide</i>	819-7188-10	PDF HTML	Online
Use of standard reports and reporting wizards	<i>Sun StorageTek Business Analytics Management Console User's Guide</i>	819-7209-10	PDF HTML	Online
Use of the database tables	<i>Sun StorageTek Business Analytics Application Developer's Guide</i>	819-7182-10	PDF HTML	Online
Installation of agents	<i>Sun StorageTek Business Analytics Array Agents Installation Guide</i>	819-7184-10	PDF HTML	Online
	<i>Sun StorageTek Business Analytics Backup Agents Installation Guide</i>	819-7185-10	PDF HTML	Online
	<i>Sun StorageTek Business Analytics Library Agents Installation Guide</i>	819-7186-10	PDF HTML	Online
	<i>Sun StorageTek Business Analytics Database Agent Installation Guide</i>	819-7187-10	PDF HTML	Online
	<i>Sun StorageTek Business Analytics Host Agent Installation Guide</i>	819-7189-10	PDF HTML	Online
	<i>Sun StorageTek Business Analytics Remote Host Agent Installation Guide</i>	819-7201-10	PDF HTML	Online

Application	Title	Part Number	Format	Location
	<i>Sun StorageTek Business Analytics Fabric Agent Installation Guide</i>	819-7205-10	PDF HTML	Online
	<i>Sun StorageTek Business Analytics NAS Agent Installation Guide</i>	819-7206-10	PDF HTML	Online
	<i>Sun StorageTek Business Analytics SRM Agent Installation Guide</i>	819-7208-10	PDF HTML	Online
	<i>Sun StorageTek Business Analytics Host and SRM Agent Release Note for Self Extracting Agent Install CD</i>	819-7204-10	PDF HTML	Online

Documentation, Support, and Training

Sun Function	URL
Documentation	http://www.sun.com/documentation/
Support	http://www.sun.com/support/
Training	http://www.sun.com/training/

Third-Party Web Sites

Sun is not responsible for the availability of third-party web sites mentioned in this document. Sun does not endorse and is not responsible or liable for any content, advertising, products, or other materials that are available on or through such sites or resources. Sun will not be responsible or liable for any actual or alleged damage or loss caused by or in connection with the use of or reliance on any such content, goods, or services that are available on or through such sites or resources.

Sun Welcomes Your Comments

Sun is interested in improving its documentation and welcomes your comments and suggestions. You can submit your comments by going to:

<http://www.sun.com/hwdocs/feedback>

Please include the title and part number of your document with your feedback:

Sun StorageTek Business Analytics Host Statistics Agent Installation Guide, part number
819-7207-10

Introduction to the Host Statistics Agent

The Sun StorageTek Business Analytics Host Statistics Agent (hostStatsAgent) collects data that can be categorized as:

- **IO** – Can be disk IO or perhaps network traffic. All capacities are measured and stored in bytes to enforce uniformity. It is the responsibility of the agent to translate the raw data to this common unit.
- **SCSI** - The SCSI sub-category targets the TAPE and DISK devices residing on a SCSI bus. The READ and WRITE information that is collected shows both number totals and capacity data. For example, the agent will collect the number of reads in an interval. The EVENTS unit denotes this. However, it will also capture the number of bytes read in an interval, denoted by the units BYTES. Same is true for TAPE devices.
- **FIBRE** – The FIBRE sub-category is very similar to the SCSI sub-category; it also contains TAPE and DISK devices. These are devices that are connected to a Fibre Channel SAN. Again, READ and WRITE are the main metrics of these devices.
- **ENET** – The ENET sub-category captures network information for a specific network interface card (NIC). Information such as collisions, data transferred, and errors are collected. Data transfers (READ and WRITE) will be stored as BYTES. Collisions and errors will be stored as counts with the units being EVENT.
- **CPU** – Shows CPU utilization. All capacities are measured and stored in seconds. The statistics are divided into four different groups: WAIT, USER, SYSTEM, and IDLE. The Performance Agent measures the number of CPU seconds used in a given interval.
- **Memory** – Shows information about the current memory resources, including page faults and the amount of swap memory in use.

Note – Sun StorageTek Business Analytics was formerly called Global Storage Manager (GSM).

The decision to upgrade an existing Host Statistics Agent may be performed because:

- The Sun StorageTek Business Analytics Release Notes indicate a problem has been fixed or a new feature added.
- The upgrade is recommended by your Sun representative.

Automatic and Static Agent Registration

Automatic agent registration is a configuration option for agent data collection. In the `storability.ini` file, automatic agent registration is configured as follows:

- **Local Manager** – Specify the IP address or host name of the Local Manager to be contacted to activate agent registration.
- **Local Manager Registration Port** – Specifies the TCP port number used by the Local Manager for agent auto registration. The default port number is 17146.
- **Enable Auto Registration** – Turns agent auto registration on (default) or off.

To register the Host Statistics Agent (`hostStatsAgent`) statically, proceed as follows:

- Enter false in the **Enable Auto Registration** field.
- Modify the Routing Agent static agent configuration to include an entry (port number | <agent IP address/name>)
- Restart the Routing Agent
- Restart the companion Central Manager agents

Host Statistics Agent Matrix

TABLE 1 Host Statistics Agent Matrix

Item	Description
Operating Systems	
Solaris	Package installation. Required Server Access: Administrator privileges SUNWbizanbase SUNWbizanlmutil
AIX	root user privileges Sun Storagetek Business Analytics UNIX Agents Installation CD (Tar Archive installation)
HP-UX	“Tar/Install.sh” installation Required Server Access: root access
Configuration Parameters	Local Manager – Specifies the IP address or host name of the Local Manager to be contacted for agent auto registration. The default value is local host. Local Manager Registration Port – Specifies the TCP port number used by the Local Manager for agent auto registration. The default port number is 17146. Enable Agent Auto Registration – Turns agent auto registration on (default) or off. Enable Stats Collection - Turns performance statistics collection on or off (default). Performance data collection is turned off by default because the agent should only run when you are monitoring a performance bottleneck. You can enable them by: (a) manually changing this configuration setting in the storability.ini file to Yes (enabled), and (b) restarting the agent to have the configuration change take effect. Statistics Collection Interval – Specifies the frequency of collection for statistics. The default value is every 5 minutes (300 seconds). Statistics Retention Period – Specifies how long the agent caches performance statistics. The default value is 14,400 seconds.

Host Statistics Agent Table

The Host Statistics Agent populates one main table, **gsa_performance_statistics**, whose columns are briefly described below.

TABLE 2 gsa_performance_statistics

Table	Description
acom_id	Local Manager unique identifier
ip_address	IP address of the host on which the agent is installed
system_type	Currently always "Host"
system_id	Server unique identifier
class	IO, memory, and CPU
subclass	Will be one of the following values: SCSI - Describes a device on a SCSI bus. FIBRE - Describes a device on a FIBRE channel ENET - Describes an Ethernet device. CPU - Describes a CPU class. PHYSICAL - Describes actual physical memory. VIRTUAL - Describes virtual memory.
device_type	Will be one of the following values: TAPE - Describes a tape drive. DISK - Describes a disk drive. ADAPTER -Describes an adapter card (e.g. NIC, HBA). CPU- Describes a CPU OVERALL - Describes the overall usage. RAM - Describes amount of RAM. DISK - Describes virtual memory on disk.
instance	Name of the device being monitored (e.g. DevRmt0).
stat_type	Identifies what kind of statistic being measured (e.g. READ, WRITE).
collect_interval	Identifies the configured interval to collect data.
start	Start of data collection timestamp

TABLE 2 gsa_performance_statistics (Continued)

Table	Description
end_time	End of data collection timestamp
duration	Computation of end minus start in seconds.
count_value	Value (count) of the measurement being collected. The meaning of this value will change based on the unit column.
unit	Defines how to interpret the results in the count column (e.g. BYTES, SECONDS).
timestamp	Agent timestamp
agg_gmt_timestamp	Timestamp (GMT) when the row was inserted into the database

Solaris Installation

The installation procedure for the Host Statistics Agent follows. You must install the base and Local Manager Utilities software if these packages are not already installed. The following procedure assumes these packages are already installed on the Solaris server.

1. Open a terminal window on the desktop of the Sun host.
2. Mount the Local Manager installation CD in your CD-ROM drive. For example:

```
mount -o ro -F hsfs /dev/dsk/c0t6d0s0 /cdrom
```
3. Change directory to the CD directory corresponding to the host's Operating System. For example:

```
cd /cdrom/Unix/Solaris/8
```
4. Run **setup** to start the installation script. The installation main menu is displayed listing the packages you can choose to install or upgrade.
5. Type the number associated with the Host Statistics Agent package and press Enter.
6. Type zero (0) and press Enter to proceed with the installation or upgrade of the agent.

```

Installing Host Stats Agent ...

Processing package instance <SUNWbizanstats> from </cdrom/cdrom/Unix/Solaris/9>

Sun StorageTek Business Analytics Host Stats Agent

(sparc) prod-5.1.12-qa

Copyright © 2006 Sun Microsystems, Inc. All rights reserved

Use is subject to license terms.

SUNWbizanstats was built on SunOS 5.9.

The 'advanced' settings all have reasonable default values, which most likely need not be changed.

Modify advanced settings? [n] [y,n,?] y

Automatically restart this agent from agentMonitor? [y] [y,n,?] y

Enable stats collection? [n] [y,n,?] y

```

FIGURE 1 Installing Host Statistics Agent on Solaris

7. When prompted, enter **y** and press **Enter** to review/ modify the **Advanced Settings** or **n** to accept the default values. For the **Advanced Settings**, you can view/modify the following configuration settings:
 - Specify whether (y/n) to start the Performance Agent (if down) using the agentMonitor. Agent Monitor will send an SNMP trap and restart an agent if it is detected as not running. The default value is n(o) or disabled.
 - For “Enable Stats Collection”, specify whether (y/n) to enable collection of performance statistics. **The default value is n (o) meaning that host performance statistics collection is disabled.** Keep in mind that running the Host Statistics Agent (SUNWbizanstats) will impact the server resources. Therefore, you should only collect performance statistics when you specifically want to measure performance or diagnose problems on the server.
 - For “Interval (in seconds) at which statistics are collected”, specify the frequency statistics are collected. The default value is 600 seconds. If you are initially testing the agent, you may want to set this to less time than 10 minutes.
 - For “Period (in seconds) for which historical statistics are retained”, specify how long that historical statistics are cached. The default interval is 14400 seconds.

- Review/modify the enable agent auto registration; agent auto registration is enabled by default.
 - Enter the IP address/network resolvable host name of the Local Manager to be contacted for agent auto registration. In the above screen, the Local Manager's IP address is 10.250.2.11.
 - Review/modify the TCP port number the Local Manager uses for agent auto registration. The default TCP port number is 17146.
 - Specify (y/n) whether to restart the agents after installation. If the agent is already running, the install script displays this operational status when the agents are restarted.
8. Enter **y** to confirm continuing with the installation of the Host Statistics Agent (SUNWbizanstats), when prompted.
 9. The installation completes and returns you to the command line.
 10. Proceed to the **Verifying the Host Statistics Agent** section.

IBM AIX Host Statistics Agent Installation

The Host Statistics Agent is provided with both the hostStatsAgent-AIX.tgz (gzipped tar) file and the install script. Ensure that the "hostStatsAgent-install.sh" and hoststatsAgent-AIX.tgz files reside in the same location.

1. Mount the installation CD in the CD-ROM drive of the AIX server. For example:

```
mount -v cdrfs -r /dev/cd0 /mnt # /mnt must exist
```
2. Change directory to the software installation directory. For example:

```
cd /cdrom/Unix/AIX/5.2
```
3. Run the installation script:

```
hostStatsAgent-install.sh
```

The installation script installs and starts the GSM Host Statistics Agent.

Note – Performance data collection is turned off by default because the agent should only run when you are monitoring a performance bottleneck. You can enable them by: (a) manually changing this configuration setting in the storability.ini file to Yes (enabled), and (b) restarting the agent to have the configuration change take effect.

Agent Auto Registration on IBM AIX

To configure agent auto registration after installation, you can add the Host Statistics Agent to a Local Manager Routing Agent configuration or manually add the required entries to the storability.ini file. Sample storability.ini entries for the Host Statistics Agent appear below.

```
GSM_LM_HOST = 10.192.1.15
GSM_LM_PORT = 17146
GSM_ENABLE_LM_REGISTRATION = true
```

HP-UX Host Statistics Agent Installation

The following notes apply to installing Sun Storagetek Business Analytics agents on this platform:

- The agent installation must be carried out locally by root.
 - You may mount the software media directly using the local CD-ROM drive or copy the CD contents to some location on the server.
 - # `ioscan -funC disk` # Identifies cdrom device
 - Sample mount command:
`pfs_mount -o xlat=unix /dev/rdisk/cXtXd0 /SD_CDROM`
(where `/dev/rdisk/cXtXd0` is the cdrom device)
 - Depending on which filesystem extensions are recognized by the host, the location, relative to the CD root, will be:

UNIX/HP-UX/<version>	(basic ISO 9660 filesystem)
Unix/HP-UX/<version>	(ISO 9660 with extensions)
 - The software installation directory contains both the .tgz (gzipped tar) file and the install script.
 - The agent should be started and stopped using the init scripts in the `/sbin/init.d` directory.
 - Use the following command to confirm which agents are running:
\$ `ps -ef | grep Agent`
 - Refer to the READ.TXT file on the installation CD for additional information on installing GSM agents on a HP-UX server.
1. Mount the installation CD in the CD-ROM drive of the HP-UX server.
 2. Change directory to the software installation directory. For example:


```
cd /cdrom/UNIX/HPUX/11.00
```

3. Run the Host Statistics Agent installation script. For example:

```
./hostStatsAgent-install.sh
```

Note – Performance data collection is turned off by default because the agent should only run when you are monitoring a performance bottleneck. You can enable them by: (a) manually changing this configuration setting in the storability.ini file to Yes (enabled), and (b) restarting the agent to have the configuration change take effect.

Agent Auto Registration on HP-UX

To configure agent auto registration after installation, you can add the Host Statistics Agent to a Local Manager Routing Agent configuration or manually add the required entries to the storability.ini file. Sample storability.ini entries for the Host Statistics Agent appear below.

```
GSM_LM_HOST = 10.192.1.15
```

```
GSM_LM_PORT = 17146
```

```
GSM_ENABLE_LM_REGISTRATION = true
```

Verifying the Host Statistics Agent

Use the Sun StorageTek Business Analytics Agent Diagnostic Tool to verify the Host Statistics Agent functionality. This diagnostic utility is installed in the Storability Local Manager Utilities folder as part of the Central Manager or Local Manager software installation. It represents the primary tool to verify agent functionality or troubleshoot agent problems. It runs only on Microsoft Windows and can be accessed from its installed program folder.

Proceed as follows:

1. Wait approximately 60 seconds after the Host Statistics Agent has started to allow it to initialize before querying it with GSMdiag.
 - a. In the **Agent location** input box, enter the IP Address or network resolvable Host Name of the server where the agent is installed in the **ip address/host name** input box.
 - b. Set the port to 17168 (or select the agent from the drop down list of service names).

- c. Click the **Get Object List** button and you should receive a list of objects published by the Performance Agent.
- d. Select the **gsa_ini_control-2_0** object to verify its configuration settings in the storability.ini file

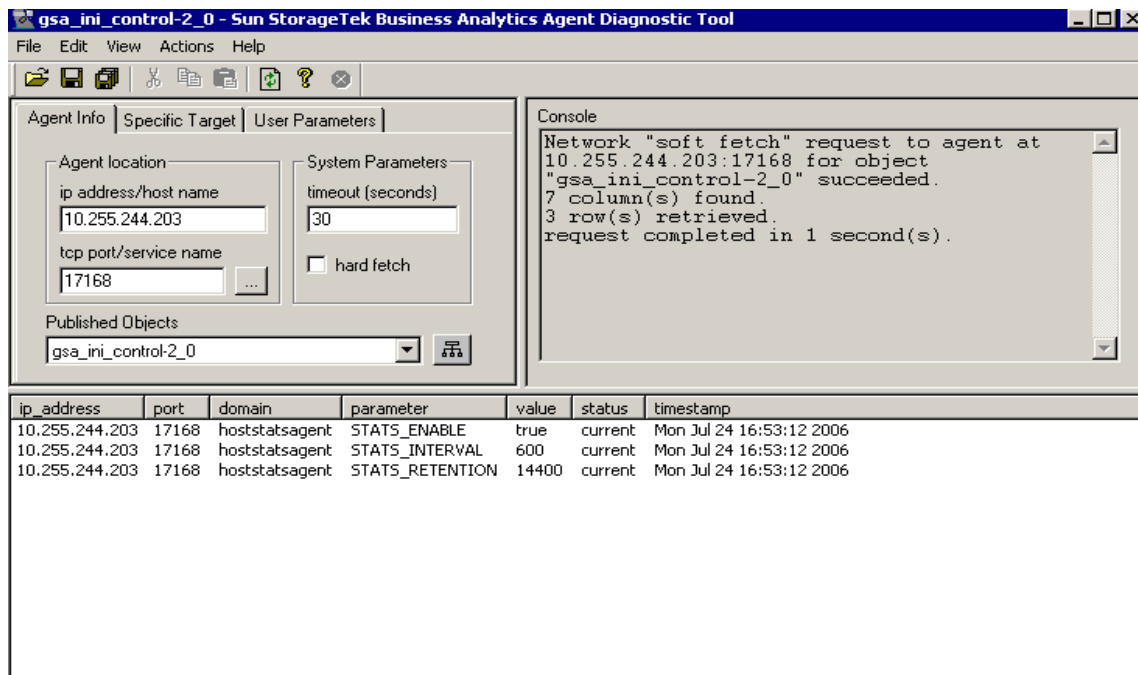


FIGURE 2 Agent Diagnostic Tool: gsa_ini_control-2_0 Object

- e. Select the **gsa_stats_config** and verify the IP address, system type (Host) and system ID columns return data.
- f. After the first polling interval has expired, select the **gsa_statistics** object and verify that data is returned.

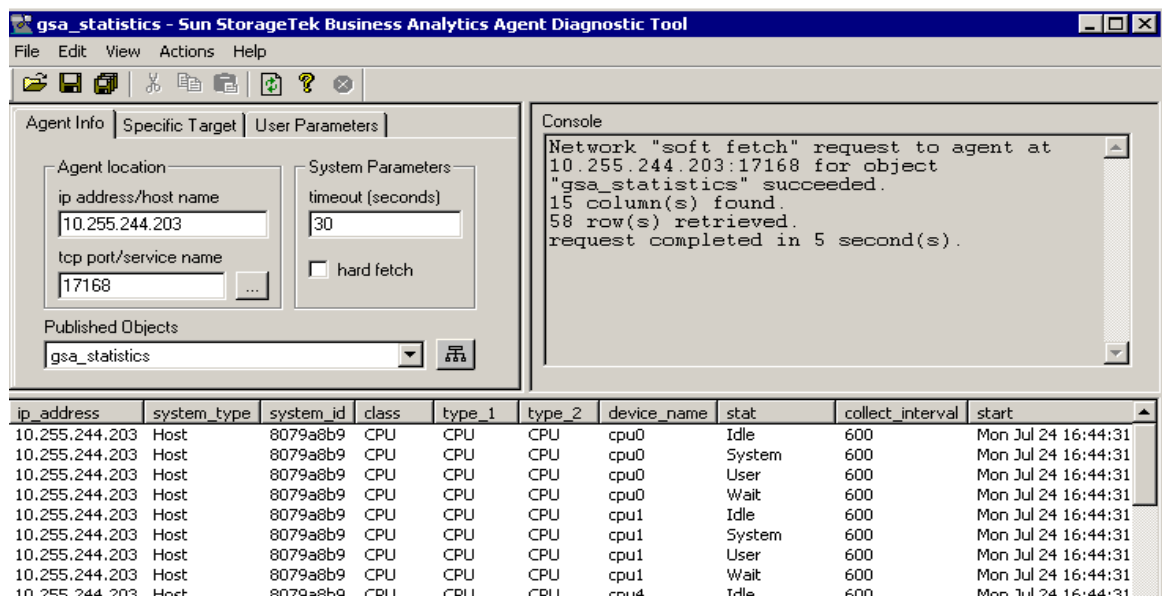


FIGURE 3 GSMdiag: gsa_statistics

2. To verify the agent (hostStatsAgent) has registered successfully with its configured Local Manager:
 - a. In the **Agent location** input box, enter the IP Address or network resolvable Host Name of the Local Manager in the **ip address/host name** input box and set the port to 17146 (or select the Storability Routing Agent from the drop down list of service names).
 - b. Click the **Get Object List** button and you should receive a list of objects published by the Routing Agent.
 - c. Select the **gsa_agent_register** table.
 - d. Verify this collected object reports the Host Agent using the following fields:
 - port – 17168 (Host Statistics Agent default TCP port number)
 - peer_list – IP Address or Host Name of the server where the Performance Agent is running
 - last_freshened – Date/time agent last registered
 - application_status – Should be 'ACTIVATED'
 - network_status – Should be 'Up'

Verifying Management Console Functionality

The following procedure describes how the administrator verifies the Host Statistic Agent's report in the Management Console. Refer to the *Administration* chapter to obtain information on the administrative menus you can access from the **Tools** pull down menu, including the **Polling** menus.

1. Log in to the Management Console as an administrative user (e.g., gsmuser) whose views provide access to the desired assets (e.g., hosts).
2. Select **Tools->Data Polling Schedule** and the Polling Schedules window is displayed.

Job ID	Enabled	Site	Collection Type	Collection Metric	Schedule	
<input type="checkbox"/> 9	Yes	All	Backup - TSM	Media	Every 4 hour starting 1/1/2004 0:00	<button>Collect Now</button>
<input type="checkbox"/> 8	Yes	All	Backup - TSM	Devices	Every 4 hour starting 1/1/2004 0:00	<button>Collect Now</button>
<input type="checkbox"/> 7	No	All	Backup - Common	Configuration	Every 4 hour starting 1/1/2004 6:00	<button>Collect Now</button>
<input type="checkbox"/> 6	No	All	Backup - Common	Meta Data	Every 8 hour starting 1/1/2004 8:00	<button>Collect Now</button>
<input type="checkbox"/> 5	Yes	All	Array	Performance	Every 1 hour starting 1/1/2004 0:00	<button>Collect Now</button>
<input type="checkbox"/> 4	Yes	All	Array	Allocation	Every 12 hour starting 1/1/2004 0:00	<button>Collect Now</button>
<input type="checkbox"/> 32	No	All	Performance	Statistics	Every 3 hour starting 1/1/2004 1:48	<button>Collect Now</button>

FIGURE 4 Polling Schedules - Performance

3. Click the **Collect Now** button to collect the **Performance** (collection type) and **Statistics** (Collection Metric) data.
4. Verify the polling job information appears at the bottom of the menu, such as "data collection request(s) are being processed, Job ID(s):32". See also Figure 6 – Polling Menu.
5. Close the **Data Polling Schedule** window.
6. On the Management Console Home Page, select **Assets->Charting Wizards**.

7. Use the radio button to select “Host Performance Chart Wizard” and click Next>>.
8. In the “Select a Statistics (Host Performance Chart Wizard)” window, select (highlight) the default data column, which is Rate (Total (SUM) / Duration (SUM)), and click Next>>.
9. In the “Select Report columns (Host Performance Chart Wizard)” window, select from the Available columns input box the columns (or all columns) you want in the report and click Next>>.

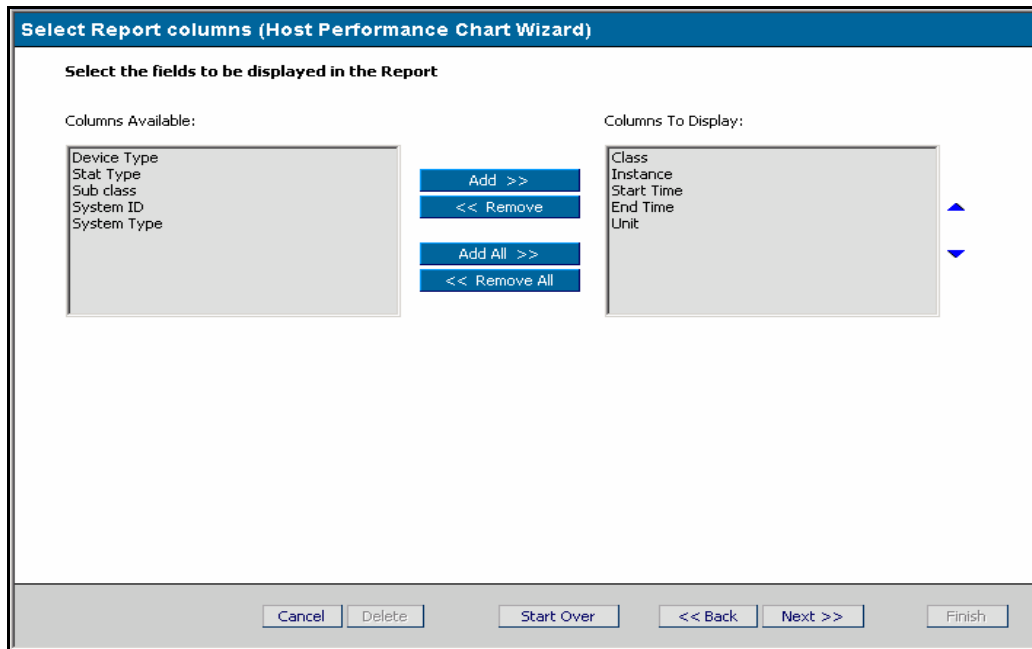


FIGURE 5 Select Report Columns

Note – The columns selected for display in the above screen are for illustrative purposes only. The Columns to Display box will be empty until you select your desired columns.

10. In the “Select Record Filter (Host Performance Chart Wizard)” window, specify any optional record selection criteria for the database query and click Next>>.
11. In the “Select Type of Chart (Host Performance Chart Wizard)” window, type a chart title in the **Chart Title** input box. Use the radio button to choose the desired chart type (line graph, column chart, or pie chart) and click Next>>.

12. In the “Select the X-Axis column (Host Performance Chart Wizard)”, select the data column(s) to be used for the chart’s X-axis and click Next>>.

Select the X-Axis column (Host Performance Chart Wizard)

Select the fields representing X-Axis data point

If you do not select X-Axis column(s), chart will be plotted with one X-Axis data point.

Data Series Columns:

- Class
- Instance
- End Time
- Unit

X-Axis Columns:

- Start Time

Buttons: Add >>, << Remove, Add All >>, << Remove All

Bottom Buttons: Cancel, Delete, Start Over, << Back, Next >>, Finish

FIGURE 6 Select the X-Axis Column (Host Performance Chart Wizard)

13. The chart is displayed. Verify minimally that data is available to produce Host Performance Charts. If desired, type a chart name in the Chart Name input box and click **Save** to save the chart to the database for easy subsequent displaying or editing.
14. Close the browser session with the Management Console as the above steps complete verifying the Management Console functionality.

Host Statistics Agent Troubleshooting

1. Use the Agent Diagnostic Tool to save the output for all the tables if escalating a problem to Sun Technical Support.

- a. Launch the Business Analytics Agent Diagnostic Tool from the installed Program Folder.
 - b. Enter the **IP Address** or **Hostname** of the server where the agent is installed and set the port to 17168 (or select the Host Stats agent from the drop down list of service names).
 - c. Click the **Get Object List** button and you should receive a list of tables published by the Host Statistics Agent. If unsuccessful, verify the Ethernet connectivity to the server running the agent and that the Storability Host Statistics Agent is running.
 - d. Select the **alerts-3_1** table and examine the **Description** column for each reported alert.
 - e. Select **File->Save All** and the “This action will network fetch all objects published by the currently specified agent and save the data to a single file.” Message appears.
 - f. Click **OK** and the **Save As** dialog appears.
 - g. Enter a meaningful file name and click **OK** to initiate the collection.
 - h. Enter the desired file name and click **OK**.
2. **Review the Message Log** – Review/collect the Message.log file that can contain information on startup errors, configuration errors, or errors regarding accessing data or parsing output.

Solaris/AIX

- Agent’s common Message.log file located by default in: /opt/storability/data.
 - Can enable debug level logging by appending LOG_SEVERITY=Debug to the Host Agent section of the storability.ini file (if your Support representative requests it).
3. **Verify Local Manager Registration** - The configured Routing Agent’s **gsa_agent_register** table displays agents that have registered with the Routing Agent. The **Type** field indicates the type of registration. If the agent registered using agent auto registration, “AUTO_NET” is displayed in the **Type** field. If the agent was defined manually as a SUB_AGENT entry in the Routing Agent’s storability.ini file, the **Type** field will display “STATIC”.
 4. **Review the Routing Agent Message Log** – Review/collect the Routing Agent Message Log to check for errors related to Ethernet connectivity problems contacting the Storability Host Statistics Agent and registration details.
 5. **Confirm Polling Schedules** – Using the Management Console’s **Data Polling Schedule** menu, review/modify the existing Polling Schedule for the **Collection Type** of Performance.

6. **Review Aggregator Message Log** – Open the Aggregator's Message Log in a text editor. Verify that the Performance object was requested (gsa_statistics) and that rows were inserted into the database. If you performed an on-demand (Collect Now) request in the **Polling** menu, look for timestamps in the log that closely approximate when that request occurred.

The log contains two entries, TID (Transaction ID) and SID (Session ID), which can help you locate (e.g., Find) and view relevant logged entries. For scheduled polling requests, the TID will be equal to the Job ID in the Polling menu. Each SID is a unique identifier for a particular agent data collection session. For on-demand polling requests, the TID is a uniquely generated TID (not the Job ID) and SID, and the TID and SID will be equal to the same integer value.

7. **Check the assurent database** – The assurent database is the data repository for your GSM application. For the Host Statistics Agent, use any MS SQL Query interface, such as **isql**, to verify rows have been inserted into the **gsa_performance_statistics** table.
8. **Verify Management Console Functionality** – As a final step in the agent troubleshooting procedure, minimally verify that there is data to allow the Host Performance Wizard to create a chart.

Uninstalling the Host Statistics Agent - Solaris

1. Open a terminal window on the desktop of the Sun host.
2. Make a backup copy of the existing agent configuration file (storability.ini).
3. Mount the Sun StorageTek Business Analytics Solaris Agents Installation CD.
4. Run the uninstallaton script (setup -u).
5. Type the number associated with the Host Statistics Agent and press Enter.
6. Type zero (0) and press Enter to specify you have completed selecting agents to be uninstalled and to proceed with the uninstall operation.
7. When prompted, type y and press Enter to confirm the request to remove the agent. The agent is uninstalled and you are returned to command line.

Uninstalling Agents - Non-Solaris UNIX Host

1. Stop all Sun StorageTek Business Analytics Agents. For example:

```
/etc/rc.hostAgent stop
```

2. Remove the storability directory from /opt

```
rm -rf storability
```

3. Verify the storability directory has been deleted

Reinstalling Host Statistics Agent - Non-Solaris UNIX Host

The reinstallation procedure for all agents supported on non-Solaris UNIX hosts, such as the Host Statistics Agent on an IBM AIX server, requires that the installer perform the following steps before running the agent's installation script:

1. Make a backup copy of the existing agent configuration file (storability.ini).
2. Make a backup copy of the contents of /opt/storability/etc/agents.
3. Open the existing agent configuration file (storability.ini) in a system text editor.
4. Locate the configuration section for the agent to be reinstalled.
5. Delete all existing configuration settings for that agent.
6. Save the modified agent configuration file.
7. Remove the existing /opt/storability/etc/agents directory.

At this point, you may reinstall the agent using the agent's installation script (e.g., `hostAgent-install.sh`).