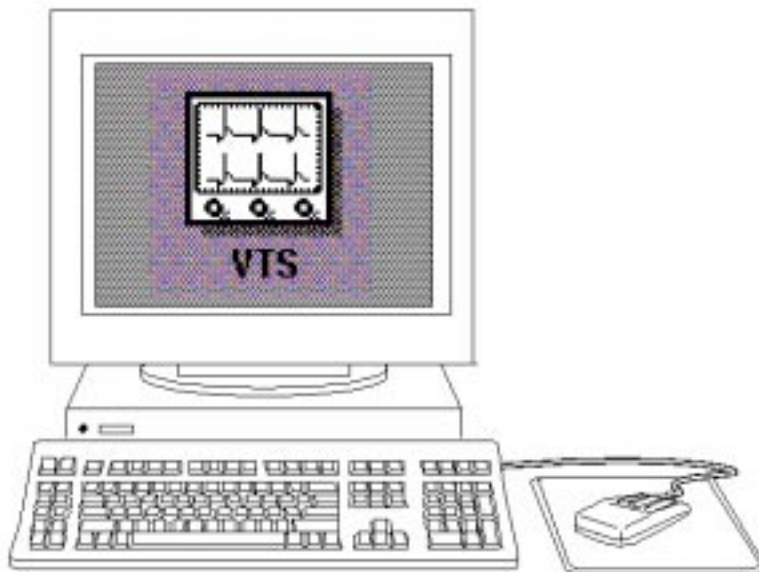


SunVTS™ 2.0 Quick Reference Card



Sun Microsystems Computer Company
A Sun Microsystems, Inc. Business
2550 Garcia Avenue
Mountain View, CA 94043 U.S.A.
415 960-1300 FAX 415 969-9131

Part No.: 802-5329-10
Revision A, March 1996



Starting the SunVTS Software

On a Local System

1. Become superuser and change to the SunVTS `bin` directory (which is `/opt/SUNWvts/bin` by default).
2. Type:

```
# ./sunvts
```

Connecting to a Remote System

1. Become superuser and change to the SunVTS `bin` directory on your machine (which is `/opt/SUNWvts/bin` by default).
2. To connect to a remote machine running the SunVTS kernel, type:

```
# ./sunvts -h remote_hostname
```

Replace *remote_hostname* with the hostname of the remote machine.

Note – The *SunVTS 2.0 User's Guide* has information about running SunVTS in the common desktop environment (CDE).

Using the SunVTS TTY Interface

Starting the SunVTS TTY Interface

1. Become superuser and change to the SunVTS `bin` directory (which is `/opt/SUNWvts/bin` by default).
2. Type:

```
# ./sunvts -t
```

Common Key Commands in the TTY Interface

Key	Description	Key	Description
Tab	Selects another panel. The selected panel will be enclosed with asterisks(*).	Escape	Discards a pop-up menu or window.
Return	Selects an option or displays a menu.	Control-F	Scrolls forward in option windows.
Spacebar	Toggles (enables/disables) a choice.	Control-B	Scrolls backward in option windows.
Arrow Keys	Moves the cursor in a selected panel.	Control-X	Quits the TTY Interface, but leaves the SunVTS kernel running on the test machine.



SunVTS OPENLOOK User Interface, Main Window, Part I

1. System Status Panel; displays testing status.
2. Test Status Panel; lets you easily view test status.
 - a. Displays only failed tests in the Group/Tests panel.
 - b. Displays the next page of tests on the Group/Test Status panel.
 - c. Displays the previous page of tests.
 - d. Displays a submenu of all tests.
 - e. Displays the status counts of a specific test group.
3. Indicates number of test passes and errors for test group.
4. Indicates number of test passes and errors for test.
5. System Performance meter.

Hostname:dejamew Model:Sun_4.75" Su

System Status:idle
System Passes: 0 Total Errors: 0
Elapsed Time: 000:00:00

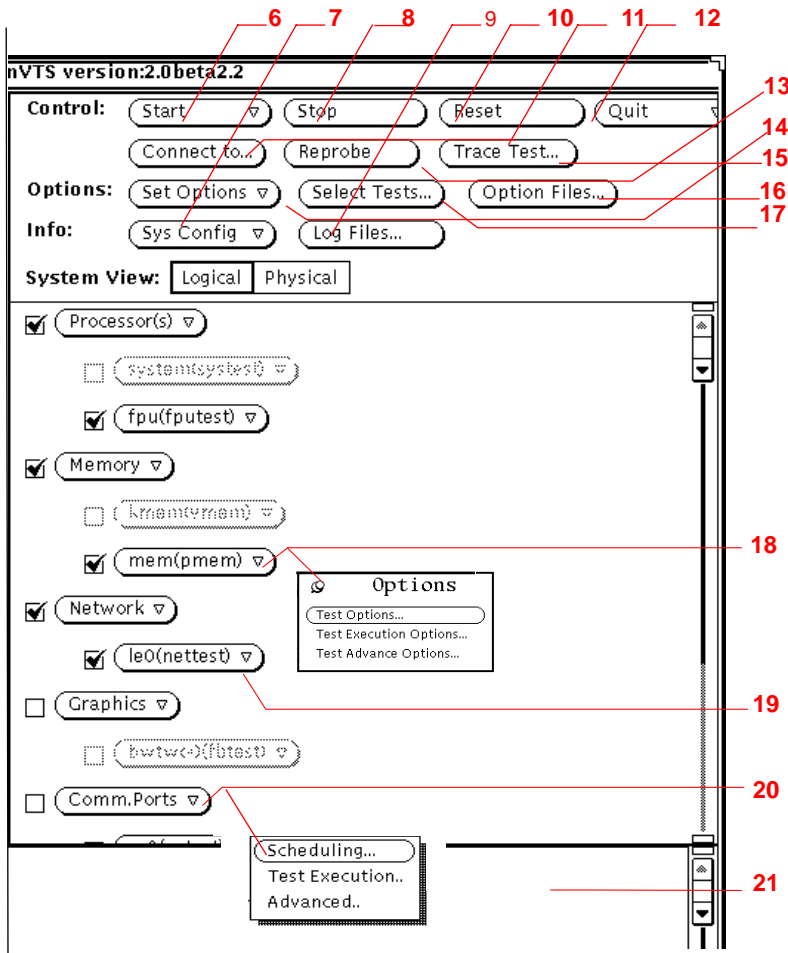
Test Status

Processor(s)	Passes: 0	Errors: 0
fpu(fputest)	Passes: 0	Errors: 0
Memory	Passes: 0	Errors: 0
mem(pmem)	Passes: 0	Errors: 0
Network	Passes: 0	Errors: 0
le0(nettest)	Passes: 0	Errors: 0
OtherDevices	Passes: 0	Errors: 0
sound0(audio)	Passes: 0	Errors: 0
SCSI-Devices(esp0)	Passes: 0	Errors: 0
c0t3d0(disktest)	Passes: 0	Errors: 0

cpu 100
pkts 512
page 128
swap 4
intr 800
disk 40
contxt 512
load 4
colls 8
errs 4

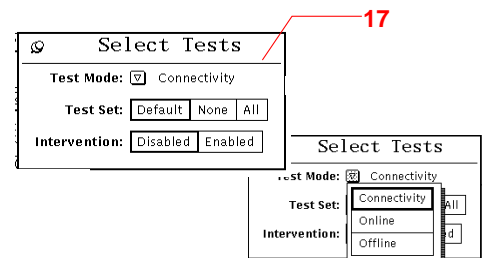
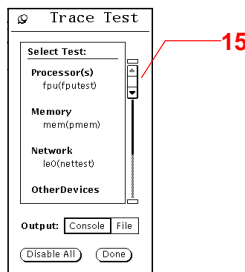
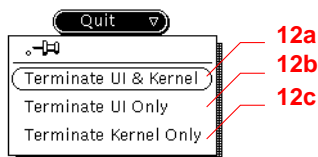
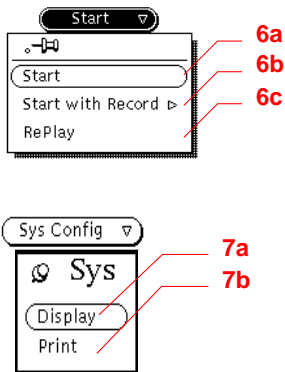


SunVTS OPENLOOK User Interface Main Window, Part II



6. Starts all enabled tests.
 - a. Starts all enabled tests.
 - b. Starts all enabled tests and records the testing session.
 - c. replays a recorded testing session.
7. System Configuration
 - a. Displays System Configuration
 - b. Prints System Configuration
8. Stops all active tests.
9. Displays Log Files window, to view or print log files.
10. Resets all pass and error counts to zero; during testing, becomes Suspend and pauses active tests.
11. Connects to another machine on the network running SunVTS kernel.
12. Displays the quit options:
 - a. Quits both SunVTS user interface and kernel.
 - b. Quits only SunVTS user interface.
 - c. Quits only SunVTS kernel.
13. Probes the System Configuration again.
14. Displays SunVTS Options (see last page for illustration and description).
15. Displays the Trace Test window, where you can choose to see trace messages for a test.
16. Displays the Option Files window, where you can load, store, or remove option files.
17. Displays the Select Tests window, which also provides a submenu for connectivity, online, or offline.
18. Displays the test options window (specific to each test).
19. A disabled test (click to enable).
20. Displays the test group's system scheduling window.
21. SunVTS Console window; displays error and verbose messages.

Details of Pop-up Menus





SunVTS OPEN LOOK Set Options Menus and Explanation of Choices

© 1996 Sun Microsystems, Inc., 2550 Garcia Avenue, Mountain View, California 94043-1100 U.S.A.

Auto Start—Begins testing upon startup of SunVTS, when used with the Options Files option.

Core File—When disabled, SunVTS sends informative messages, instead of creating a core file.

Email Address—Establishes Email address where testing status is sent.

Group Concurrency—States the number of test groups you want to run concurrently.

Group Lock—Protects test group options from being changed.

Group Override—Overrides any test system options in favor of the group options on this window.

Log Period—Indicates time, in minutes, between testing status email messages.

Max Errors—Sets maximum number of errors a test allows before stopping (0 means infinite).

Max Passes—Indicates maximum number of passes a test can run (0 means infinite).

Max System Passes—States maximum number of system passes a test can run (0 means infinite).

Max System Errors—Indicates maximum number of errors a test will allow before stopping (0 means infinite).

Max System Time—Indicates maximum number of minutes to run all tests (0 means infinite).

Max Time—Indicates time limit, in minutes, a test can run (0 means infinite).

Num. of Instances—Sets the number of instances each test runs (if applicable).

Run On Error—Continues testing until the max_errs number is reached for the system.

Send Email—Sends testing status to you through email.

Single Pass—Runs only one pass of each selected test.

Stress—increases test performance; only available for some tests.

System Concurrency—States the number of tests you want to run concurrently; overrides the group_concurrency option.

System Override—Changes all test and group system options to match the options on this Set Options Advanced window (enabled by default).

Test Lock—Protects the specific test system options from being changed by the Group or Set Options windows

Verbose—Displays verbose test messages in the SunVTS Console window.

© 1996 Sun Microsystems, Inc., 2550 Garcia Avenue, Mountain View, California 94043-1100 U.S.A.

All rights reserved. Sun, the Sun logo, Sun Microsystems, SunVTS, and Solaris are trademarks or registered trademarks of Sun Microsystems, Inc. in the United States and other countries. All SPARC trademarks, including the SCD Compliant logo, are trademarks or registered trademarks of SPARC International, Inc. in the United States and other countries. SPARCstation is licensed exclusively to Sun Microsystems, Inc. Products bearing SPARC trademark are based upon an architecture developed by Sun Microsystems, Inc.

© 1996 Sun Microsystems, Inc., 2550 Garcia Avenue, Mountain View, California 94043-1100 U.S.A.

Tous droits réservés. Sun, le logo Sun, Sun Microsystems, SunVTS, et Solaris sont des marques déposées ou enregistrées par Sun Microsystems, Inc. aux Etats-Unis et dans certains d'autres pays. Toutes les marques SPARC, y compris le logo SCD Compliant, sont des marques déposées ou enregistrées de SPARC International, Inc. aux Etats-Unis et dans d'autres pays. SPARCstation est exclusivement licenciée à Sun Microsystems, Inc. Les produits portant la marque SPARC sont basés sur une architecture développée par Sun Microsystems, Inc.

