



# Sun™ Integrated Lights Out Manager (ILOM) 2.0 Supplement for Sun Fire™ X4170, X4270, and X4275 Servers

---

Sun Microsystems, Inc.  
[www.sun.com](http://www.sun.com)

Part No. 820-7629-10  
March 2009, Revision A

Submit comments about this document at: <http://www.sun.com/hwdocs/feedback>

Copyright © 2009 Sun Microsystems, Inc., 4150 Network Circle, Santa Clara, California 95054, U.S.A. All rights reserved.

Sun Microsystems, Inc. has intellectual property rights relating to technology embodied in the product that is described in this document. In particular, and without limitation, these intellectual property rights may include one or more of the U.S. patents listed at <http://www.sun.com/patents> and one or more additional patents or pending patent applications in the U.S. and in other countries.

This distribution may include materials developed by third parties.

Parts of the product may be derived from Berkeley BSD systems, licensed from the University of California. UNIX is a registered trademark in the U.S. and in other countries, exclusively licensed through X/Open Company, Ltd.

Sun, Sun Microsystems, the Sun logo, Java, Sun Studio, Solaris and Sun Fire are trademarks or registered trademarks of Sun Microsystems, Inc., or its subsidiaries, in the U.S. and other countries.

Intel is a trademark or registered trademark of Intel Corporation or its subsidiaries in the United States and other countries. The Adobe logo is a registered trademark of Adobe Systems, Incorporated.

The OPEN LOOK and Sun™ Graphical User Interface was developed by Sun Microsystems, Inc. for its users and licensees. Sun acknowledges the pioneering efforts of Xerox in researching and developing the concept of visual or graphical user interfaces for the computer industry. Sun holds a non-exclusive license from Xerox to the Xerox Graphical User Interface, which license also covers Sun's licensees who implement OPEN LOOK GUIs and otherwise comply with Sun's written license agreements.

Use of any spare or replacement CPUs is limited to repair or one-for-one replacement of CPUs in products exported in compliance with U.S. export laws. Use of CPUs as product upgrades unless authorized by the U.S. Government is strictly prohibited.

DOCUMENTATION IS PROVIDED "AS IS" AND ALL EXPRESS OR IMPLIED CONDITIONS, REPRESENTATIONS AND WARRANTIES, INCLUDING ANY IMPLIED WARRANTY OF MERCHANTABILITY, FITNESS FOR A PARTICULAR PURPOSE OR NON-INFRINGEMENT, ARE DISCLAIMED, EXCEPT TO THE EXTENT THAT SUCH DISCLAIMERS ARE HELD TO BE LEGALLY INVALID.

---

Copyright © 2009 Sun Microsystems, Inc., 4150 Network Circle, Santa Clara, California 95054, Etats-Unis. Tous droits réservés.

Sun Microsystems, Inc. détient les droits de propriété intellectuelle relatifs à la technologie incorporée dans le produit qui est décrit dans ce document. En particulier, et ce sans limitation, ces droits de propriété intellectuelle peuvent inclure un ou plus des brevets américains listés à l'adresse <http://www.sun.com/patents> et un ou les brevets supplémentaires ou les applications de brevet en attente aux Etats - Unis et dans les autres pays.

Cette distribution peut comprendre des composants développés par des tierces parties.

Des parties de ce produit pourront être dérivées des systèmes Berkeley BSD licenciés par l'Université de Californie. UNIX est une marque déposée aux Etats-Unis et dans d'autres pays et licenciée exclusivement par X/Open Company, Ltd.

Sun, Sun Microsystems, le logo Sun, Java, Sun Studio, Solaris et Sun Fire sont des marques, ou des marques déposée de Sun Microsystems, Inc., ou ses filiales, aux Etats-Unis et autres pays.

Intel est une marque ou une marque déposée de Intel Corporation, ou ses filiales, aux Etats-Unis, et dans d'autres pays. Le logo Adobe. est une marque déposée de Adobe Systems, Incorporated.

L'interface d'utilisation graphique OPEN LOOK et Sun™ a été développée par Sun Microsystems, Inc. pour ses utilisateurs et licenciés. Sun reconnaît les efforts de pionniers de Xerox pour la recherche et le développement du concept des interfaces d'utilisation visuelle ou graphique pour l'industrie de l'informatique. Sun détient une licence non exclusive de Xerox sur l'interface d'utilisation graphique Xerox, cette licence couvrant également les licenciés de Sun qui mettent en place l'interface d'utilisation graphique OPEN LOOK et qui, en outre, se conforment aux licences écrites de Sun.

L'utilisation de pieces detachees ou d'unites centrales de remplacement est limitee aux reparations ou a l'echange standard d'unites centrales pour les produits exportes, conformement a la legislation americaine en matiere d'exportation. Sauf autorisation par les autorites des Etats-Unis, l'utilisation d'unites centrales pour proceder a des mises a jour de produits est rigoureusement interdite.

LA DOCUMENTATION EST FOURNIE "EN L'ETAT" ET TOUTES AUTRES CONDITIONS, DECLARATIONS ET GARANTIES EXPRESSES OU TACITES SONT FORMELLEMENT EXCLUES, DANS LA MESURE AUTORISEE PAR LA LOI APPLICABLE, Y COMPRIS NOTAMMENT TOUTE GARANTIE IMPLICITE RELATIVE A LA QUALITE MARCHANDE, A L'APTITUDE A UNE UTILISATION PARTICULIERE OU A L'ABSENCE DE CONTREFAÇON.



Please  
Recycle



Adobe PostScript

# Contents

---

## **Preface** v

### **1. ILOM 2.0 Feature Sets** 1

ILOM Overview 2

Supported Platform Firmware 2

Supported ILOM 2.0 Feature Set 3

Platform-Specific Features 3

### **2. ILOM Platform Features for the Sun Fire X4170, X4270, and X4275 Servers** 5

Resetting the Root Password to the Factory Default 6

ILOM Sideband Management 6

▼ Configure Sideband Management Using the Web Interface 7

▼ Configure Sideband Management Using the CLI 8

▼ Configure Sideband Management Using the Host BIOS Setup Utility 10

Switch Serial Port Output Between SP and Host Console 13

▼ Switch Serial Port Output Using the Web Interface 14

▼ Switch Serial Port Output Using the CLI 15

Clear Server Faults 16

Server Chassis Intrusion Sensors 17

How the /SYS/INTSW Sensor Works 17

How the /SYS/SP/SP_NEEDS_REBOOT Sensor Works	18
Sensors Reference Information	19
Temperature Sensors	20
Power Supply Fault Sensors	20
Fan and Security Sensors	21
Power Supply Unit Current, Voltage, and Power Sensors	22
Entity Presence Sensors	22
<b>Index</b>	<b>25</b>

# Preface

---

The *Sun Integrated Lights Out Manager 2.0 Supplement for Sun Fire X4170, X4270, and X4275 Servers* contains information about ILOM 2.0 that is specific to the Sun Fire X4170, X4172, and X4275 Servers. For a complete discussion of ILOM 2.0 firmware and its capabilities, along with user procedures, see the *Sun Integrated Lights Out Manager 2.0 User's Guide* (820-1188).

---

## Product Updates

For product updates that you can download for the Sun Fire X4170, X4172, and X4275 Servers, visit the following web site:

<http://www.sun.com/download/index.jsp>

Find the Hardware Drivers section and click x64 Servers & Workstations. The Sun Fire X4170, X4270, and X4275 Servers sites contain updates for firmware and drivers, as well as CD-ROM .iso images.

---

## Related Documentation

The related documents listed in the following table are available online at:

<http://docs.sun.com/app/docs/prod/sf.x4170#hic>  
<http://docs.sun.com/app/docs/prod/sf.x4270#hic>  
<http://docs.sun.com/app/docs/prod/sf.x4275#hic>

<b>Title</b>	<b>Content</b>	<b>Part Number</b>	<b>Format</b>
<i>Sun Fire X4170, X4270, and X4275 Servers Product Notes</i>	Late-breaking information about the server	820-5831	PDF HTML
<i>Sun Fire X4170, X4270, and X4275 Servers Getting Started Guide</i>	Basic installation information for setting up the server	820-5833	PDF Print
<i>Sun Fire X4170, X4270, and X4275 Servers Installation Guide</i>	Detailed installation information for setting up the server	820-5827	PDF HTML Print option
<i>Sun Fire X4170, X4270, and X4275 Servers Linux, VMware, and Solaris Operating Systems Installation Guide</i>	Installation instructions for the Linux, VMware, and Solaris operating systems	820-5828	PDF HTML
<i>Sun Fire X4170, X4270, and X4275 Servers Windows Operating System Installation Guide</i>	Installation instructions for the Windows Server operating system	820-5829	PDF HTML
<i>Sun Installation Assistant for Windows and Linux User's Guide</i>	Instructions for using the Sun Installation Assistant to install the Windows and Linux operating systems	820-3357	PDF HTML
<i>Sun Fire X4170, X4270, and X4275 Servers Service Manual</i>	Information and procedures for maintaining and upgrading the server	820-5830	PDF HTML
<i>Sun x64 Servers Diagnostics Guide</i>	Information for diagnosing and troubleshooting the server	820-6750	PDF HTML
<i>x64 Servers Utilities Reference Manual</i>	Information for using applications and utilities common to x64 servers	820-1120	PDF HTML
<i>Sun Integrated Lights Out Manager 2.0 User's Guide</i>	ILOM features and tasks that are common to servers and server modules that support ILOM	820-1188	PDF HTML

<b>Title</b>	<b>Content</b>	<b>Part Number</b>	<b>Format</b>
<i>Sun Integrated Lights Out Manager Supplement for Sun Fire X4170, X4270, and X4275 Servers</i>	ILOM information that is specific to the Sun Fire X4170, X4270, and X4275 Servers	820-7629	PDF HTML
<i>Sun Fire X4170, X4270, and X4275 Servers Safety and Compliance Guide</i>	Hardware safety and compliance information for the server	820-5832	PDF
<i>Important Safety Information for Sun Hardware Systems</i>	Multilingual hardware safety and compliance information for all Sun hardware system	816-7190	Print

Translated versions of some of these documents are available at the web site described above in French, Simplified Chinese, and Japanese. English documentation is revised more frequently and might be more up-to-date than the translated documentation.

---

## Documentation, Support, and Training

<b>Sun Function</b>	<b>URL</b>
Sun Documentation	<a href="http://docs.sun.com">http://docs.sun.com</a>
Support	<a href="http://www.sun.com/support/">http://www.sun.com/support/</a>
Training	<a href="http://www.sun.com/training/">http://www.sun.com/training/</a>

---

## Using UNIX Commands

This document might not contain information about basic UNIX<sup>®</sup> commands and procedures such as shutting down the system, booting the system, and configuring devices. Refer to the following for this information:

- Software documentation that you received with your system
- Solaris<sup>™</sup> Operating System documentation, which is at:

<http://docs.sun.com>

---

## Third-Party Web Sites

Sun is not responsible for the availability of third-party web sites mentioned in this document. Sun does not endorse and is not responsible or liable for any content, advertising, products, or other materials that are available on or through such sites or resources. Sun will not be responsible or liable for any actual or alleged damage or loss caused by or in connection with the use of or reliance on any such content, goods, or services that are available on or through such sites or resources.

---

## Typographic Conventions

Typeface*	Meaning	Examples
AaBbCc123	The names of commands, files, and directories; on-screen computer output	Edit your <code>.login</code> file. Use <code>ls -a</code> to list all files. % You have mail.
<b>AaBbCc123</b>	What you type, when contrasted with on-screen computer output	% <b>su</b> Password:
<i>AaBbCc123</i>	Book titles, new words or terms, words to be emphasized. Replace command-line variables with real names or values.	Read Chapter 6 in the <i>User's Guide</i> . These are called <i>class</i> options. You <i>must</i> be superuser to do this. To delete a file, enter <code>rm filename</code> .

\* The settings on your browser might differ from these settings.

---

## Sun Welcomes Your Comments

Sun is interested in improving its documentation and welcomes your comments and suggestions. You can submit your comments by going to:

<http://www.sun.com/hwdocs/feedback>

Please include the title and part number of your document with your feedback:

*Sun Integrated Lights Out Manager 2.0 Supplement for Sun Fire X4170, X4270, and X4275 Servers*, part number 820-7629-10.



## ILOM 2.0 Feature Sets

---

This chapter provides a brief overview about ILOM, as well as defines the purpose of ILOM's common and platform features offered in ILOM 2.0. The following topics are discussed in this chapter:

- [“ILOM Overview” on page 2](#)
- [“Supported Platform Firmware” on page 2](#)
- [“Supported ILOM 2.0 Feature Set” on page 3](#)
- [“Platform-Specific Features” on page 3](#)

---

# ILOM Overview

Integrated Lights Out Manager (ILOM) is system management firmware that is preinstalled on all x64-based servers. ILOM enables you to actively manage and monitor components installed in your server. ILOM provides a browser-based interface and a command-line interface, as well as SNMP and IPMI interfaces. For general information about ILOM's use and capabilities, see the *Sun Integrated Lights Out Manager 2.0 User's Guide* (820-1188).

---

**Note** – For information about establishing a first time connection to ILOM on your server service processor (SP), see “Setting Up ILOM” in the *Sun Fire X4170, X4270, and X4275 Servers Installation Guide* (820-5827).

---

---

# Supported Platform Firmware

[TABLE 1-1](#) identifies the supported ILOM and BIOS firmware versions supported on the servers.

**TABLE 1-1** Supported Platform Firmware

ILOM SP Version	Host BIOS Version	Applicable Hardware
2.0.3.9	07.01.38.03	Sun Fire X4170, X4270, and X4275 Servers

---

# Supported ILOM 2.0 Feature Set

The Sun Fire X4170, X4270, and X4275 Servers support the entire ILOM feature set provided in ILOM 2.0. In addition, the servers supports platform-specific features offered in ILOM as of ILOM 2.0.3.9.

For information about the use of the ILOM 2.0 feature set, see the *Sun Integrated Lights Out Manager 2.0 User's Guide* (820-1188) and the *Addendum to the Sun Integrated Lights Out Manager 2.0 User's Guide* (820-4198).

---

## Platform-Specific Features

ILOM 2.0 operates on many platforms, supporting features that are common to all platforms. Some ILOM 2.0 features belong to a subset of platforms and not to all. This Supplement describes the features that belong to the Sun Fire X4170, X4270, and X4275 Servers, augmenting the set of features described in the *Sun Integrated Lights Out Manager 2.0 User's Guide* and its Addendum.

[Chapter 2](#) of this Supplement provides detailed information about the ILOM platform features supported on the Sun Fire X4170, X4270, and X4275 Servers.



# ILOM Platform Features for the Sun Fire X4170, X4270, and X4275 Servers

---

This chapter provides platform-specific information related to ILOM 2.0 running on the Sun Fire X4170, X4270, and X4275 Servers.

The following topics are covered in this supplement:

- [“Resetting the Root Password to the Factory Default” on page 6](#)
- [“Resetting the Root Password to the Factory Default” on page 6](#)
- [“ILOM Sideband Management” on page 6](#)
- [“Switch Serial Port Output Between SP and Host Console” on page 13](#)
- [“Clear Server Faults” on page 16](#)
- [“Server Chassis Intrusion Sensors” on page 17](#)
- [“Sensors Reference Information” on page 19](#)

---

**Note** – The features described in this chapter are supported in addition to the common ILOM 2.0 features supported for all x64 servers.

---

---

# Resetting the Root Password to the Factory Default

The default password for the ILOM `root` account is `changeme`. Sun recommends that you change this password to secure your server. If you forget the changed password, you can use the ILOM Preboot Menu to reset the password to the default. For instructions, refer to “Resetting the Root Password to the Factory Default” in the *Sun Fire X4170, X4270, and X4275 Servers Service Manual* (820-5830).

---

## ILOM Sideband Management

By default, you connect to the server’s service processor (SP) using the out-of-band network management port (NET MGT). The ILOM sideband management feature enables you to select either the NET MGT port or one of the server’s Gigabit Ethernet ports (NET 0, 1, 2, 3), which are in-band ports, to send and receive ILOM commands to and from the server SP. In-band ports are also called sideband ports.

The advantage of using a sideband management port to manage the server’s SP is that one less cable connection and one less network switch port is needed. In configurations where a great number of servers are being managed, such as data centers, sideband management can represent a significant savings in hardware and network utilization.

---

**Note** – Connectivity to the server SP might be lost when the SP management port configuration is changed while you are connected to the SP using a network connection, such as SSH, web, or Sun ILOM Remote Console.

---

---

**Note** – Server host power cycles will cause a brief interruption of network connectivity for server Gigabit Ethernet ports (NET 0, 1, 2, 3) that are configured for sideband management. Additionally, adjacent switch/bridge ports should be configured as *host ports*, since ports that are configured as *switch ports* and that participate in the Spanning Tree Protocol (STP) may experience longer outages due to spanning tree recalculation.

---

You can configure sideband management using either the web interface, the command-line interface (CLI), the BIOS, or IPMI. For instructions, see the following sections:

- “Configure Sideband Management Using the Web Interface” on page 7
- “Configure Sideband Management Using the CLI” on page 8
- “Configure Sideband Management Using the Host BIOS Setup Utility” on page 10

## ▼ Configure Sideband Management Using the Web Interface

1. Log in to the ILOM web interface.

2. Select Configuration --> Network.

The Network Settings page appears.

ABOUT

Role (User): Administrator (root) SP Hostname :

### Sun™ Integrated Lights Out Manager

System Information	System Monitoring	Configuration	User
System Management Access	Alert Management	Network	Server

#### Network Settings

View the MAC address and configure network settings for the Service Processor IP address. Select the radio button next to the appropriate mode, then enter settings.

MAC Address:

Obtain an IP Address Automatically (use DHCP)

Use the Following IP Address

IP Address:

Subnet Mask:

Gateway:

Management Port:

Out Of Band MAC Address:

Sideband MAC Address:

3. In the Network Settings page, do the following:

- a. Select DHCP to acquire the IP address automatically or specify the appropriate IP address.

- b. **To select a sideband management port, click the Management Port drop-down list and select the desired management port.**

The drop-down list enables you to change to any one of the four Gigabit Ethernet ports, `/SYS/MB/NET $n$` , where  $n$  is 0 to 3. The SP NET MGT port, `/SYS/SP/NET0`, is the default.

- c. **Click Save for the changes to take effect.**

## ▼ Configure Sideband Management Using the CLI

1. **Log in to ILOM using the CLI.**

---

**Note** – Using a serial connection for this procedure eliminates the possibility of losing connectivity during sideband management configuration changes.

---

2. **If you logged in using the serial port, you can assign a static IP address.**

For instructions, see “Use the Serial Connection to Change the ILOM SP IP Address” in the *Sun Fire X4170, X4270, and X4275 Servers Installation Guide* (820-5827)



3. To show the current port settings, type:

-> **show /SP/network**

The network properties appear. For example:

```
/SP/network
Targets:
Properties:
  commitpending = (Cannot show property)
  dhcp_server_ip = none
  ipaddress = xx.xx.xx.xx
  ipdiscovery = static
  ipgateway = xx.xx.xx.xx
  ipnetmask = xx.xx.xx.xx
  macaddress = 11.11.11.11.11.86
  managementport = /SYS/SP/NET0
  outofbandmacaddress = 11.11.11.11.11.86
  pendingipaddress = xx.xx.xx.xx
  pendingipdiscovery = static
  pendingipgateway = xx.xx.xx.xx
  pendingipnetmask = xx.xx.xx.xx
  pendingmanagementport = /SYS/SP/NET0
  sidebandmacaddress = 11.11.11.11.11.87
  state = enabled
```

In the above output the current active macaddress is the same as the SP's outofbandmacaddress and the current active managementport is set to the default (/SYS/SP/NET0).

4. To set the SP management port to a sideband port, type the following commands:

-> **set /SP/network pendingmanagementport=/SYS/MB/NET $n$**

Where  $n$  equals 0, 1, 2, or 3.

-> **set commitpending=true**

## 5. To view the change, type:

-> **show /SP/network**

The network properties appear and show that the change has taken effect. For example:

```
/SP/network
Targets:
Properties:
  commitpending = (Cannot show property)
  dhcp_server_ip = none
  ipaddress = xx.xx.xx.xx
  ipdiscovery = static
  ipgateway = xx.xx.xx.xx
  ipnetmask = xx.xx.xx.xx
macaddress = 11.11.11.11.11.87
managementport = /SYS/MB/NETn
  outofbandmacaddress = 11.11.11.11.11.86
  pendingipaddress = xx.xx.xx.xx
  pendingipdiscovery = static
  pendingipgateway = xx.xx.xx.xx
  pendingipnetmask = xx.xx.xx.xx
pendingmanagementport = /SYS/MB/NETn
sidebandmacaddress = 11.11.11.11.11.87
  state = enabled
```

In the above output the `macaddress` matches the `sidebandmacaddress`, and the `managementport` matches the `pendingmanagementport`.

## ▼ Configure Sideband Management Using the Host BIOS Setup Utility

You can access the BIOS Setup utility screens from the following interfaces:

- Use a USB keyboard, mouse, and VGA monitor connected directly to the server.
- Use a terminal (or terminal emulator connected to a computer) through the serial port on the back panel of the server.
- Connect to the server using the Sun ILOM Remote Console.

To configure sideband management using the host BIOS Setup utility, perform the following steps:

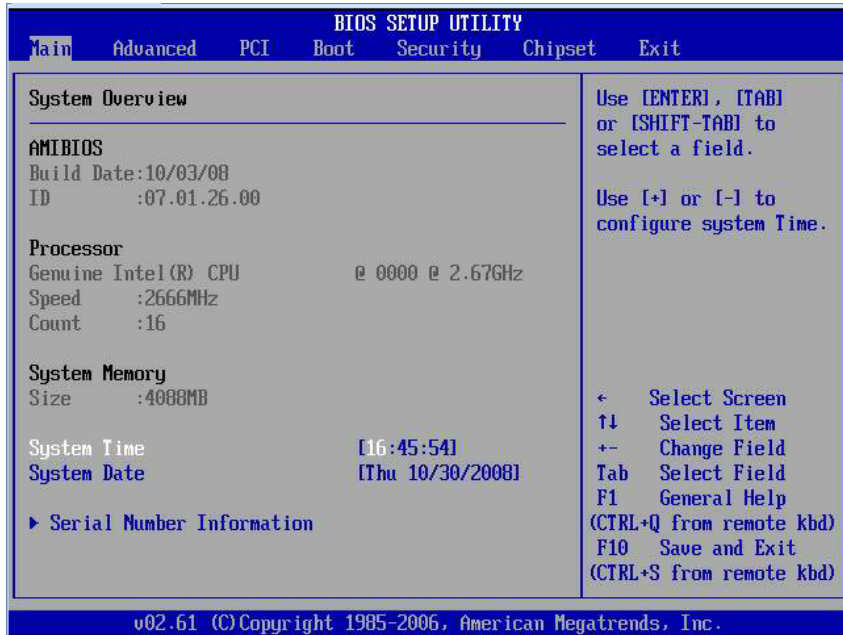
### 1. Power on or power cycle the server.

2. To enter the BIOS Setup utility, press the F2 key while the system is performing the power-on self-test (POST).

```

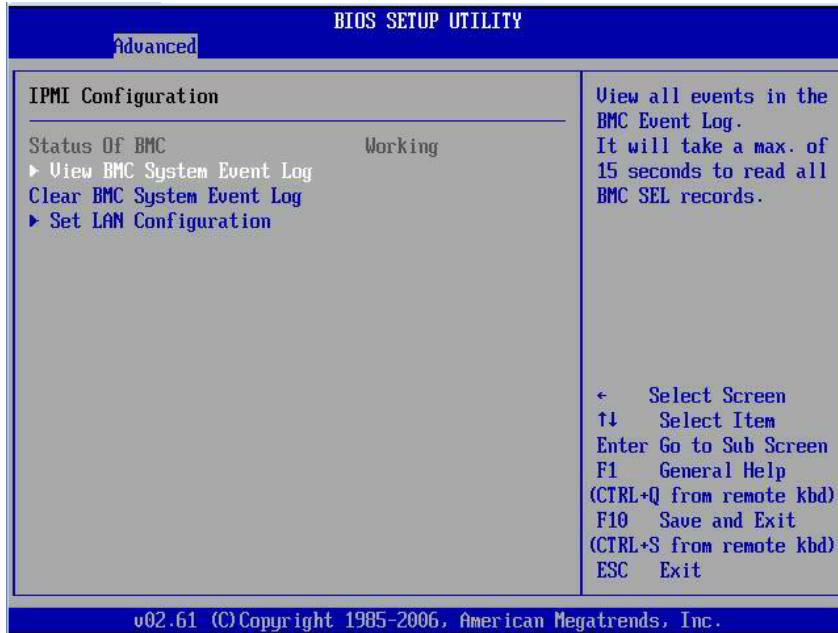
Initializing USB Controllers .. Done.
Press F2 to run Setup (CTRL+E on Remote Keyboard)
Press F8 for BBS POPUP (CTRL+P on Remote Keyboard)
Press F12 to boot from the network (CTRL+N on Remote Keyboard)
  
```

When BIOS is started, the main BIOS Setup utility top-level screen appears. This screen provides seven menu options across the top of the screen.

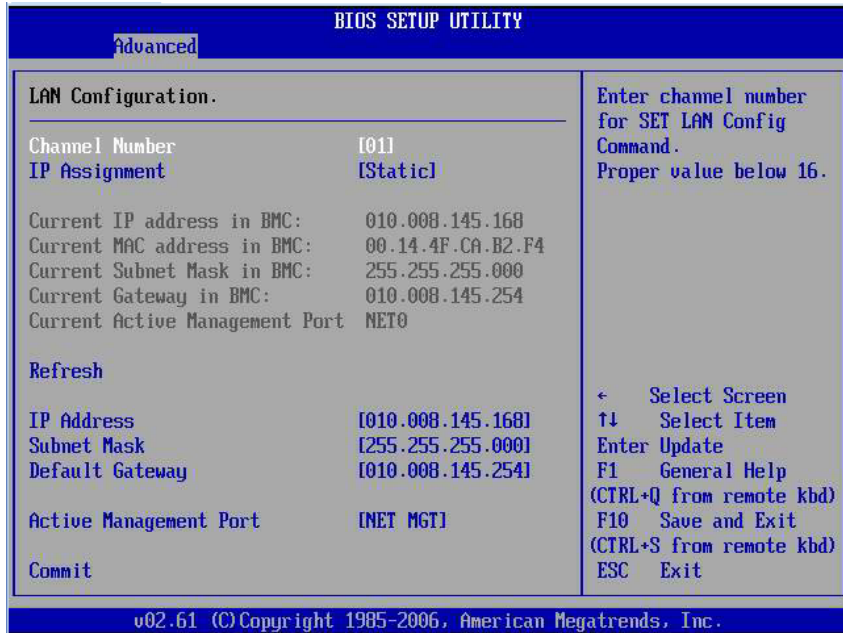


3. In the main screen, select **Advanced** → **IPMI Configuration**.

The IPMI Configuration screen appears.



4. In the IPMI Configuration screen, select the Set LAN Configuration option.  
The LAN Configuration screen appears.



5. In the LAN Configuration screen, do the following:
  - a. Use the left and right keys to select the IP Assignment option and set it to DHCP.
  - b. Use the left and right keys to select the Active Management Port option and set the port to a sideband management port (NET0, NET1, NET2, NET3).  
The NET MGT port is the default.
  - c. Select Commit for the change to take effect.

---

# Switch Serial Port Output Between SP and Host Console

You can switch the serial port output of the Sun Fire X4170, X4270, and X4275 Servers between the SP console (SER MGT) and the host console (COM1). By default, the SP console is connected to the system serial port. This feature is beneficial for Windows kernel debugging, as it enables you to view non-ASCII character traffic from the host console.

You can switch serial port output using either the ILOM web interface or the ILOM command-line interface (CLI). For instructions, see the following sections:

- [“Switch Serial Port Output Using the Web Interface” on page 14](#)
- [“Switch Serial Port Output Using the CLI” on page 15](#)



---

**Caution** – You should set up the network on the SP before attempting to switch the serial port owner to the host server. If a network is not set up, and you switch the serial port owner to the host server, you will be unable to connect using the CLI or web interface to change the serial port owner back to the SP. To change the serial port owner back to the SP, you must use the ILOM Preboot Menu to restore access to the serial port over the network. For instructions, refer to “Restoring Access to the Serial Console” in the *Sun Fire X4170, X4270, and X4275 Servers Service Manual* (820-5830).

---

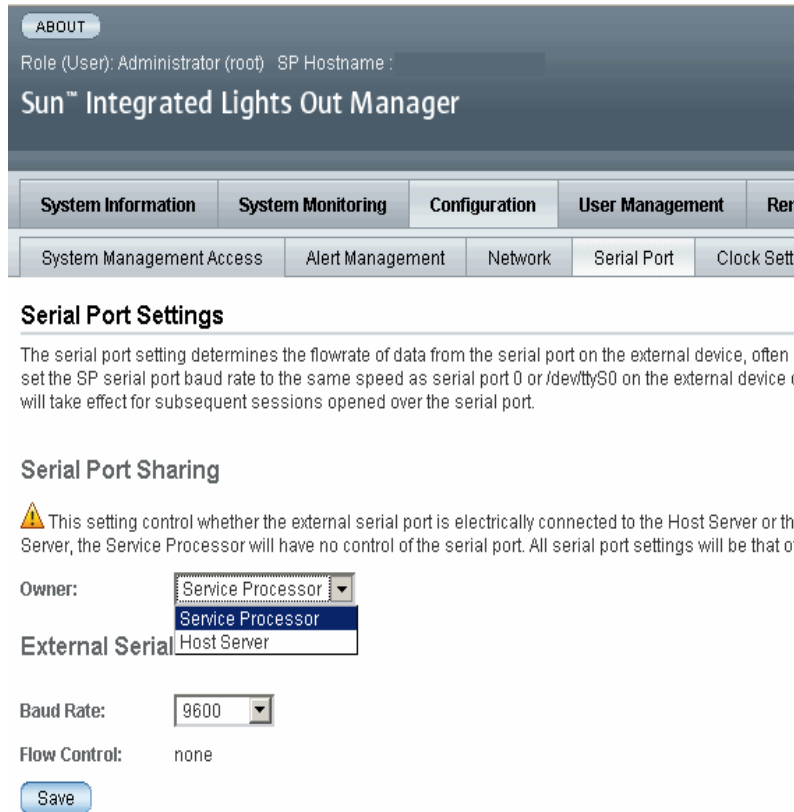
## ▼ Switch Serial Port Output Using the Web Interface

To switch the serial port output using the ILOM web interface, perform the following steps:

1. **Log in to the ILOM web interface.**

**2. In the ILOM web interface, select Configuration → Serial Port.**

The Serial Port Settings page appears.



**3. To select a serial port owner, click the Owner drop-down list and select the desired serial port owner.**

The drop-down list enables you to select either Service Processor or Host Server.

By default, Service Processor is selected.

**4. Click Save for your change to take effect.**

## ▼ Switch Serial Port Output Using the CLI

**1. Log in to the ILOM CLI.**

2. To set the serial port owner, type:

```
-> set /SP/serial/portsharing/owner=host
```

By default, owner=SP.

---

## Clear Server Faults

When a server component fails, the server generates a component-specific fault that is captured by the ILOM SP. Some faults are cleared automatically when the failed component is replaced, but faults generated for components that are *not* hot-serviceable have to be cleared manually. You can use either the ILOM web interface or the command-line interface (CLI) to manually clear faults.

For the Sun Fire X4170, X4270, and X4275 Servers, the following types of faults must be cleared manually after the faulty component is replaced:

- DIMM faults
- CPU faults
- Motherboard faults (when motherboard is not replaced)
- PCIe faults

In addition, the following fault does not require replacement of a faulty part; however, user action is needed to clear it:

- `fault.security.integrity-compromised@/sys/sp`

This fault is generated when the server's top cover is removed while the AC power cords are still connected to the power supply, that is, power is not completely removed from the server.



---

**Caution** – If the `fault.security.integrity-compromised@/sys/sp` fault is not cleared, the server SP will operate in a degraded mode and the server's ability to determine DIMM inventory and diagnose DIMM faults accurately is compromised. For more information on the effects on the server when this fault is not cleared, see the *Sun Fire X4170, X4270, and X4275 Servers Service Manual* (820-5830).

---

When clearing faults, give consideration to the following:

- When clearing faults for memory DIMMs, note that the DIMM faults can be either system wide (`/SYS/MB`) or on a per DIMM basis (`/SYS/MB/Pn/Dn`).
- PCIe faults can cover one or more of the following components: `/SYS/MB/NETn` and `/SYS/MB/RISERn/PCIEn`.

The procedure for clearing a fault differs depending on the type of fault:



- To clear the `fault.security.integrity-compromised@/sys/sp` fault, replace the server's top cover and either reboot the server's SP or remove the AC power cords, and then reconnect the cords.
- To clear DIMM, CPU, motherboard, and PCIe faults, access the server's ILOM SP and clear the fault for the failed component. For information on how to use the ILOM web interface or the CLI to clear server faults, see the *Sun Integrated Lights Out Manager 2.0 User's Guide* (820-1188).

---

## Server Chassis Intrusion Sensors

The server has two sensors—the `/SYS/INTSW` sensor and the `/SYS/SP/SP_NEEDS_REBOOT` sensor—that are asserted when the server's top cover is removed while power is being applied to the server. This is an improper service action so these sensors serve to alert you to any unauthorized and inadvertent removal of the server's cover. Thus, these sensors enable system administrators to have confidence that the physical integrity of the server has not been violated. This is particularly beneficial when the server is in a remote or uncontrolled location.

### How the `/SYS/INTSW` Sensor Works

The `/SYS/INTSW` sensor is asserted when the chassis intrusion switch trips while the server is powered on. If the AC power cords are connected to the server, power is being applied to the server. Even when you shut down the server's host, power is still being applied to the server. The only way to remove power from the server completely is to disconnect the server's AC power cords.

The chassis intrusion switch will trip if the server's cover has been removed, the switch itself is misaligned, or the cover is not properly seated. This sensor is de-asserted when the integrity of the server's chassis is restored, that is, when the removed cover is properly reinstalled returning the chassis intrusion switch to its closed state.



---

**Caution** – Removing the server's top cover while the power cord is connected to the system is not an authorized service action. Proper service action requires that host and SP shutdown operations be observed and that the power cord be disconnected from the system before the cover is opened. If proper service actions are taken, you should not see either the `/SYS/INTSW` or `/SYS/SP/SP_NEEDS_REBOOT` sensors asserted unless there are other issues, such as a misaligned chassis intrusion switch.

---

## How the /SYS/SP/SP\_NEEDS\_REBOOT Sensor Works

Like the /SYS/INTSW sensor, the /SYS/SP/SP\_NEEDS\_REBOOT sensor is asserted when the server's chassis intrusion switch is tripped while power is being applied to the server. Shutting down the server's host or shutting down the server by pressing the Power button does not shut down the SP because the SP continues to run when the server's power is placed in Standby mode. The only way to remove power from the SP is to disconnect the AC power cords. To clear this sensor, you must replace the server's cover and either reboot or power cycle the SP.

Assertion of the /SYS/SP/SP\_NEEDS\_REBOOT sensor indicates that the SP has been placed in a degraded mode of operation. In degraded mode, ILOM stops taking DIMM inventory. This action is taken as a safety precaution because the SP has no way of knowing the real configuration of the server's memory. For example, some of the DIMMs could have been removed while the server's cover was improperly removed. To protect against such an occurrence, the SP is placed in the degraded mode.

---

**Note** – If the chassis intrusion switch is not properly aligned or the server's cover has not been properly seated, both the /SYS/INTSW and /SYS/SP/SP\_NEEDS\_REBOOT sensors will be asserted and the SP will operate in a degraded mode.

---

TABLE 2-1 shows how the /SYS/INTSW sensor and the /SYS/SP/SP\_NEEDS\_REBOOT sensor work together to indicate the state of the server.

**TABLE 2-1** Server Condition as Indicated by the /SYS/INTSW and /SYS/SP/SP\_NEEDS\_REBOOT Sensors

/SYS/INTSW	/SYS/SP/SP_NEEDS_REBOOT	Server Condition
De-asserted	De-asserted	Normal system state.
Asserted	Asserted	The server's top cover was opened while the SP was running. The server's DIMM inventory can no longer be considered valid so the SP is placed in a degraded mode of operation. This condition can also be caused by a misaligned chassis intrusion switch or an improperly seated cover.
De-asserted	Asserted	The server's top cover has been replaced, but the SP was not subsequently rebooted. The server's DIMM inventory can no longer be considered valid so the SP is placed in a degraded mode of operation. The SP needs to be rebooted while the host power is held off before the DIMM inventory will be valid. <b>Note</b> - The server's host can be powered on in this state.

## Sensors Reference Information

The server includes several of sensors that report on hardware conditions. Many of the sensor readings are used to adjust the fan speeds and perform other actions, such as illuminating LEDs and powering off the server.

This section describes the sensors that ILOM monitors for the Sun Fire X4170, X4270, and X4275 Servers.

The following types of sensors are described:

- [“Temperature Sensors” on page 20](#)
- [“Power Supply Fault Sensors” on page 20](#)
- [“Fan and Security Sensors” on page 21](#)
- [“Power Supply Unit Current, Voltage, and Power Sensors” on page 22](#)
- [“Entity Presence Sensors” on page 22](#)

---

**Note** – For information about how to obtain sensor readings or to determine the state of system indicators in ILOM, see the *Sun Integrated Lights Out Manager 2.0 User's Guide* (820-1188).

---

## Temperature Sensors

[TABLE 2-2](#) describes the environmental sensors. In the table, *n* designates numbers 0-n.

**TABLE 2-2** Temperature Sensors

Sensor Name	Sensor Type	Description
/SYS/MB/T_AMB	Temperature	Motherboard ambient temperature sensor
/SYS/T_AMB	Temperature	System ambient temperature sensor

## Power Supply Fault Sensors

[TABLE 2-3](#) describes the power supply fault sensors. In the table, *n* designates the numbers 0-n.

**TABLE 2-3** Power Supply Sensors

Sensor Name	Sensor Type	Description
/SYS/PSn/PWROK	Fault	Power supply <i>n</i> DC power OK
/SYS/PSn/VINOK	Fault	Power supply <i>n</i> input voltage OK
/SYS/PSn/CUR_FAULT	Fault	Power supply <i>n</i> current fault
/SYS/PSn/VOLT_FAULT	Fault	Power supply <i>n</i> voltage fault
/SYS/PSn/FAN_FAULT	Fault	Power supply <i>n</i> fan fault
/SYS/PSn/TEMP_FAULT	Fault	Power supply <i>n</i> temperature fault

## Fan and Security Sensors

[TABLE 2-4](#) describes the fan and security sensors. In the table, *n* designates numbers 0-n.

**TABLE 2-4** Fan and Security Sensors

Sensor Name	Sensor Type	Description
/SYS/FB <i>n</i> /FM <i>n</i> /Fn/TACH	Fan speed	Fan board <i>n</i> ; Fan module <i>n</i> ; Fan <i>n</i> tachometer
/SYS/INTSW	Physical security	<p>This sensor tracks the state of the chassis intrusion switch. If the server's top cover is opened while the AC power cords are still connected so that power is being applied to the server, this sensor asserts. If the top cover is subsequently replaced, this sensor is de-asserted.</p> <p>For more information, see <a href="#">"Server Chassis Intrusion Sensors"</a> on page 17.</p>
/SYS/SP/SP_NEEDS_REBOOT	Physical security	<p>This sensor asserts when the server's cover is removed while the AC power cords are still connected so that power is being applied to the server. However, this sensor is not cleared by merely replacing the cover.</p> <p>This sensor indicates a server fault that must be cleared; otherwise, the SP will operate in a degraded mode.</p> <p>To clear this fault, replace the server's top cover, power down the server's host, and reboot the server's SP.</p> <p>For more information, see <a href="#">"Server Chassis Intrusion Sensors"</a> on page 17.</p>

# Power Supply Unit Current, Voltage, and Power Sensors

TABLE 2-5 describes the power supply unit current, voltage, and power sensors. In the table, *n* designates numbers 0-n.

**TABLE 2-5** Power Supply Unit Current, Voltage, and Power Sensors

Sensor Name	Sensor Type	Description
/SYS/PSn/V_IN	Voltage	Power supply unit <i>n</i> AC input voltage sensor
/SYS/PSn/I_IN	Current	Power supply unit <i>n</i> AC input current sensor
/SYS/PSn/V_OUT	Voltage	Power supply unit <i>n</i> DC output voltage sensor
/SYS/PSn/I_OUT	Current	Power supply unit <i>n</i> DC output current sensor
/SYS/PSn/INPUT_POWER	Power	Power supply unit <i>n</i> input power sensor
/SYS/PSn/OUTPUT_POWER	Power	Power supply unit <i>n</i> output power sensor
/SYS/VPS	Power	Server total input power consumption sensor

# Entity Presence Sensors

TABLE 2-6 describes the entity presence sensors. In the table, *n* designates numbers 0-n.

**TABLE 2-6** Presence Sensors

Sensor Name	Sensor Type	Description
/SYS/DBP/HDDn/PRSNT	Entity presence	Hard drive device present monitor
/SYS/PSn/PRSNT	Entity presence	Power supply <i>n</i> present monitor
/SYS/DBP/PRSNT	Entity presence	Disk backplane present monitor
/SYS/FBn/FMn/PRSNT	Entity presence	Fan board <i>n</i> ; Fan module <i>n</i> present monitor
/SYS/FBn/PRSNT	Entity presence	Fan board present monitor
/SYS/MB/Pn/PRSNT	Entity presence	Motherboard; CPU <i>n</i> present monitor

**TABLE 2-6** Presence Sensors (*Continued*)

<b>Sensor Name</b>	<b>Sensor Type</b>	<b>Description</b>
/SYS/MB/Pn/Dn/PRSNT	Entity presence	Motherboard; CPU $n$ ; Memory DIMM $n$ present monitor
/SYS/MB/RISER $n$ /PRSNT	Entity presence	PCIe riser $n$ present monitor
/SYS/MB/RISER $n$ /PCIE $n$ /PRSNT	Entity presence	PCIe card $n$ present monitor





# Index

---

## B

### BIOS

- firmware versions supported, 2

## C

### chassis intrusion sensor

- benefits, 17
- how it works, 17

### chassis intrusion switch

- how tripped, 17

## D

### documentation

- feedback, viii
- languages available in, vii
- related documents, v
- software, vii
- Solaris operating system, vii
- support, vii

## F

### features

- platform specific, 3

## I

### ILOM

- firmware versions supported, 2

## P

### Preboot Menu, 14

### product updates

- downloads, v

## R

### related documents, v

- root password
- setting, 6

## S

### sensors

- entity presence, 22
- fan, 21
- power, 22
- power supply, 20
- security, 21
- temperature, 20

### serial port

- setup requirements, 14
- switching, 13

### server faults

- cleared manually, 16
- clearing, 16
- DIMMs, 16
- procedure for clearing, 17
- removing top cover, 16

### service action

- unauthorized, 17

### sideband management

- advantage of using, 6
- loss of connectivity, 6
- ports available, 6
- purpose, 6

### SP degraded mode

- definition, 18

### SP needs reboot sensor

when it is asserted, 18

Sun support, vii

## **T**

training

where to find, vii

## **U**

UNIX commands, vii

## **W**

web sites

third party, viii