

**Oracle® Enterprise Single Sign-on Suite Plus
Reporting**

Database Configuration Guide

Release 11.1.1.2.0

E14806-02

November 2010

Copyright ©2006-2010, Oracle. All rights reserved.

The Programs (which include both the software and documentation) contain proprietary information; they are provided under a license agreement containing restrictions on use and disclosure and are also protected by copyright, patent, and other intellectual and industrial property laws. Reverse engineering, disassembly, or decompilation of the Programs, except to the extent required to obtain interoperability with other independently created software or as specified by law, is prohibited.

The information contained in this document is subject to change without notice. If you find any problems in the documentation, please report them to us in writing. This document is not warranted to be error-free. Except as may be expressly permitted in your license agreement for these Programs, no part of these Programs may be reproduced or transmitted in any form or by any means, electronic or mechanical, for any purpose.

If the Programs are delivered to the United States Government or anyone licensing or using the Programs on behalf of the United States Government, the following notice is applicable:

U.S. GOVERNMENT RIGHTS Programs, software, databases, and related documentation and technical data delivered to U.S. Government customers are "commercial computer software" or "commercial technical data" pursuant to the applicable Federal Acquisition Regulation and agency-specific supplemental regulations. As such, use, duplication, disclosure, modification, and adaptation of the Programs, including documentation and technical data, shall be subject to the licensing restrictions set forth in the applicable Oracle license agreement, and, to the extent applicable, the additional rights set forth in FAR 52.227-19, Commercial Computer Software--Restricted Rights (June 1987). Oracle USA, Inc., 500 Oracle Parkway, Redwood City, CA 94065.

The Programs are not intended for use in any nuclear, aviation, mass transit, medical, or other inherently dangerous applications. It shall be the licensee's responsibility to take all appropriate fail-safe, backup, redundancy and other measures to ensure the safe use of such applications if the Programs are used for such purposes, and we disclaim liability for any damages caused by such use of the Programs.

Oracle, JD Edwards, PeopleSoft, and Siebel are registered trademarks of Oracle Corporation and/or its affiliates. Other names may be trademarks of their respective owners.

The Programs may provide links to Web sites and access to content, products, and services from third parties. Oracle is not responsible for the availability of, or any content provided on, third-party Web sites. You bear all risks associated with the use of such content. If you choose to purchase any products or services from a third party, the relationship is directly between you and the third party. Oracle is not responsible for: (a) the quality of third-party products or services; or (b) fulfilling any of the terms of the agreement with the third party, including delivery of products or services and warranty obligations related to purchased products or services. Oracle is not responsible for any loss or damage of any sort that you may incur from dealing with any third party.

Table of Contents

Table of Contents	3
About Oracle Enterprise Single Sign-on Suite Plus Reporting	4
About this Guide.....	4
Database Configuration Overview.....	5
Create the Database Table.....	6
Create Reporting Administrative Console User.....	8
Set Permissions to Log Onto the Reporting Administrative Console.....	9
Set up Domain Computers as SQL User.....	10
Set Up Stored Procedures.....	12
Next Steps.....	13

About Oracle Enterprise Single Sign-on Suite Plus Reporting

Oracle Enterprise Single Sign-on Suite Plus Reporting version 11.1.1.2.0 provides organizations with the ability to create reports to leverage all data and events that routinely take place in the day-to-day usage of Oracle Enterprise Single Sign-on Suite Plus.

Reporting includes a Web-based administrative console that accesses the SQL database and generates reports using the event records.

The Reporting sub-system consists of 4 main components:

- **Centralized SQL Database** – contains all event information required for Reporting.
- **Web-based Reporting Administrative Console** – accesses the SQL database and generates reports using the event records.
- **SSO Reporting Service** – collects audit/reporting events into the SQL database.
- **Oracle Enterprise Single Sign-on Suite Plus Products** - captures event information and sends the events to the SSO Reporting Service.

About this Guide

This guide describes how to configure the SQL database to start storing events for Reporting to access. The instructions in this guide are based on Microsoft SQL Server 2005 being configured on a Windows Server 2003. Readers of this document should have a solid understanding of Microsoft SQL Server 2005.



Microsoft SQL Server (versions 2008 and 2005) is the only database supported with Oracle Enterprise Single Sign-on Suite Plus Reporting version 11.1.1.2.0.

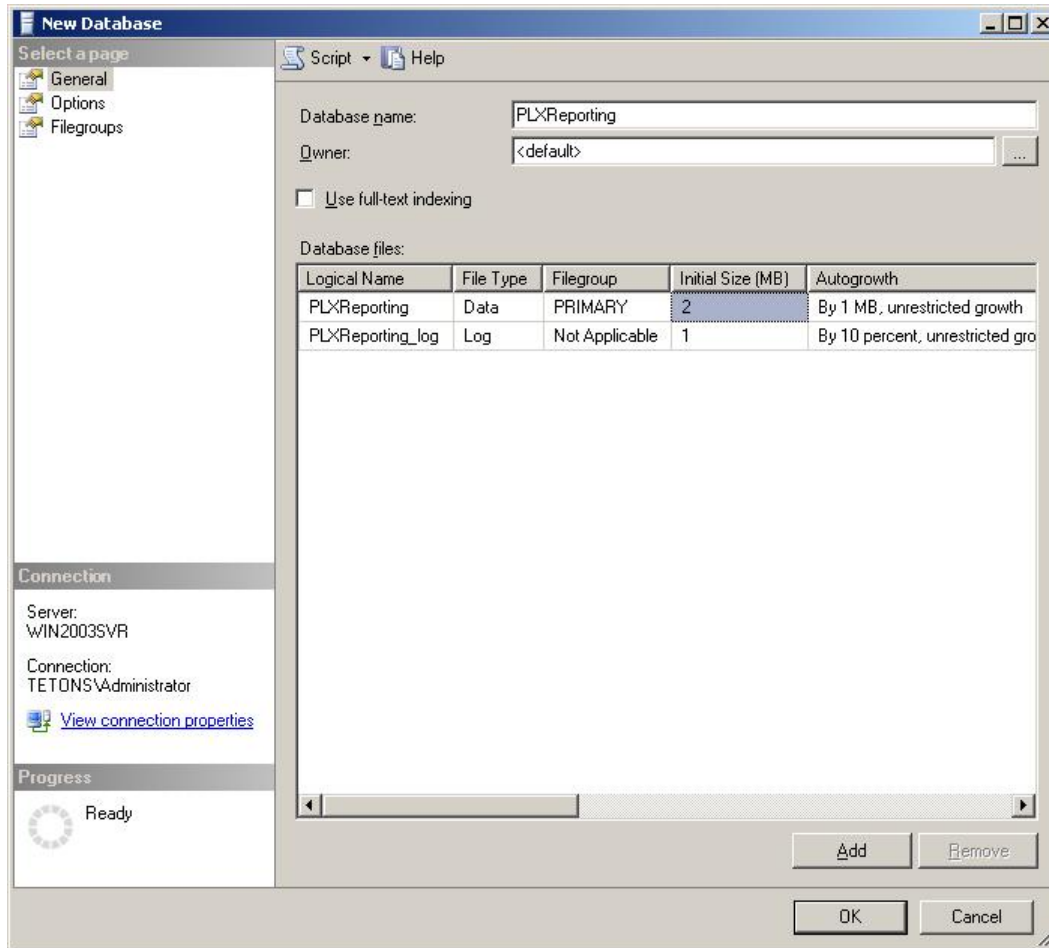
Database Configuration Overview

The following is a brief overview of the procedures that you must follow in order to successfully configure the SQL database to work with Reporting:

- [Create the Database Table](#)
- [Create Reporting Administrative Console User](#)
- [Set Permissions to Log Onto the Reporting Administrative Console](#)
- [Set up Domain Computers as SQL User](#)
- [Set up Stored Procedures](#)
- [Next Steps](#)

Create the Database Table

1. Open MS SQL Server 2005. Click **All Programs > Microsoft SQL Server 2005 > SQL Server Management Studio**.
2. Connect to the Database using Windows authentication, which should be the default.
3. On the left pane, navigate to **Databases**.
4. Right click on **Databases** and select **New Database**. The New Database dialog opens.



5. Enter a **Database name**, for example **PLXReporting**, and click **OK**. You should now see a **PLXReporting** database under **Databases**.



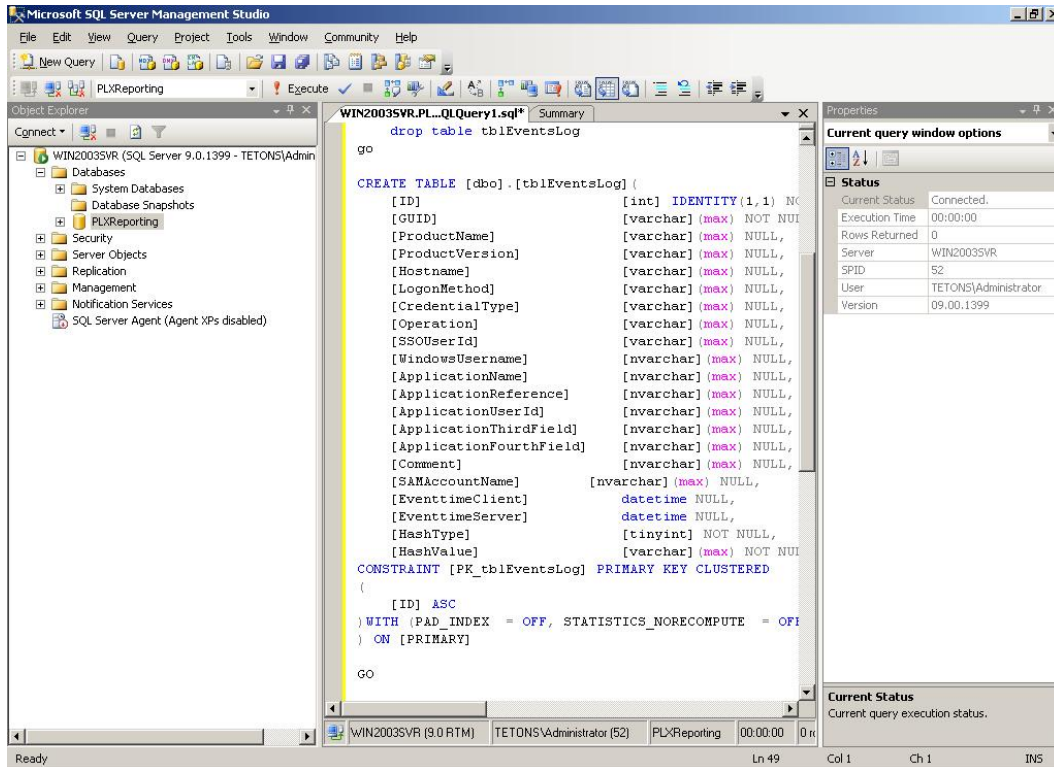
The database can have any name as long as the name is consistent in the queries and stored procedures.

6. Right click on **PLXReporting** and select **New Query**.
7. Open the `tblEventsLog.sql` file located in the Reporting package. Copy the contents of the file into the New Query panel.



The database name after the "Use" statement in the query must match the database name entered in Step 5 above.

8. Click **Execute** which is located above the workspace pane. When it is done, a success message appears in the bottom right pane.
9. Steps 6-8 create the Database table, **dbo.tblEventsLog** under **PLXReporting – Tables** .



Create Reporting Administrative Console User

1. In the SQL Server Management Studio left pane, expand the top node (server name), then navigate to **Security > Logins**.
2. Right click on **Logins** and select **New Login**.
3. On the New Login dialog:
 - a. Select **SQL Server Authentication**.
 - b. Enter your login name and password.
 - c. Unselect **User must change password and next login**.
 - d. Select **Server Roles** in left pane.
 - e. Enable **serveradmin**, **setupadmin**, and **sysadmin** by checking the check box next to each.
4. Click **OK**.

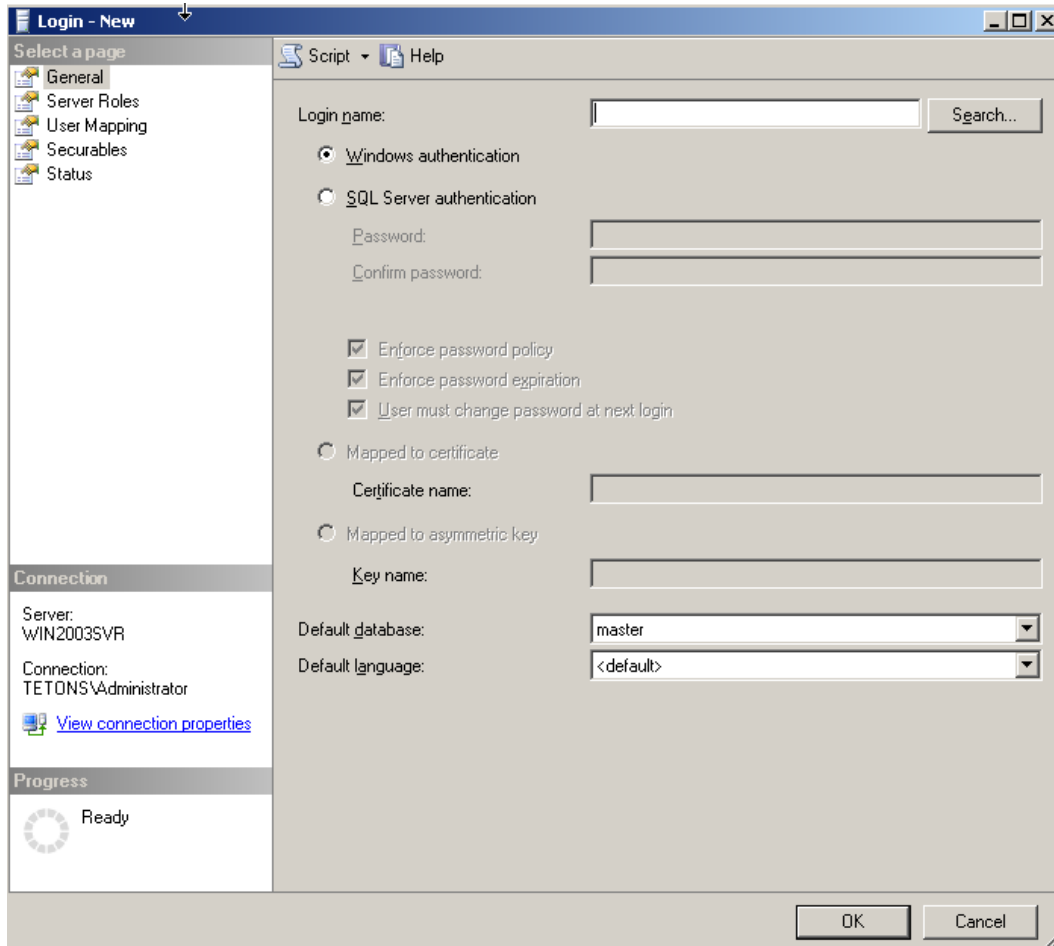
Set Permissions to Log Onto the Reporting Administrative Console

1. In the SQL Server Management Studio left pane, right click on the top node (server name), and select **Properties**.
2. On the Properties dialog, select **Security** from left pane.
3. Select **SQL Server and Windows Authentication mode** radio button.
4. Now select **Permissions** from left pane .
5. Select the user (created in the previous section) in the **Logins and Roles** section.
6. In the bottom pane, **Explicit Permissions for <name>**, ensure **Grant** is enabled for the **Connect SQL** permission .

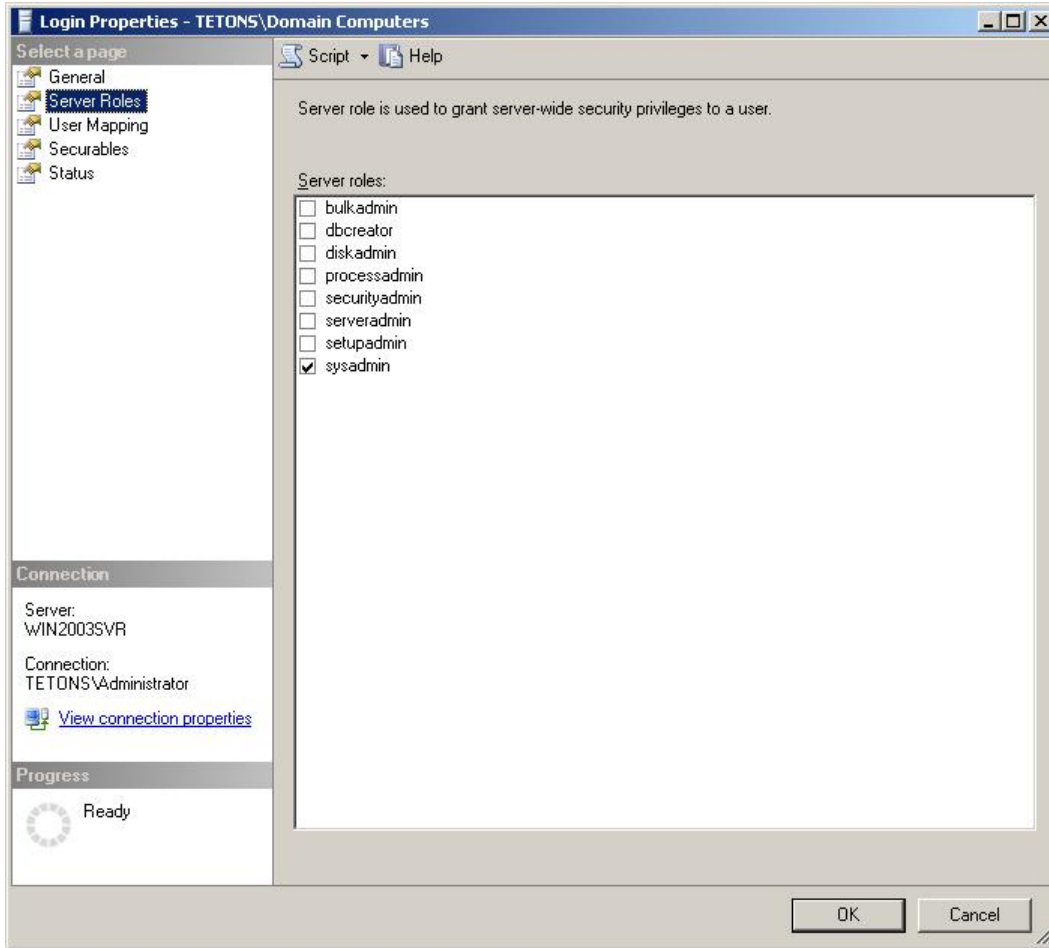
Set up Domain Computers as SQL User

The following steps configure the Reporting Service to run as Local System account.

1. In the SQL Server Management Studio left pane, expand the top node (server name), then navigate to **Security > Logins**.
2. Right click on **Logins** and select **New Login**.



3. On the New Login dialog, enter **<Domain>\Domain Computers** in the **Login Name** field, and then select **Windows Authentication**.
4. Select **Server Roles** in the left pane and check **sysadmin**.
5. Click **OK**.



Set Up Stored Procedures

1. In the SQL Server Management Studio left pane, expand the top node (server name), then navigate to and expand **Databases**.
2. Right click on **PLXReporting** and select **New Query**.
3. Execute this code on the SQL Server. This script only instructs the database where to put the Passlogix.MsSql.Decoding.dll:

```
DECLARE @AssemblyPath nvarchar(1024)

SELECT @AssemblyPath = REPLACE(physical_name,
    'Microsoft SQL Server\MSSQL.1\MSSQL\DATA\master.mdf',
    'Microsoft SQL Server\MSSQL.1\CLR\')

FROM master.sys.database_files WHERE name = 'master';

SELECT @AssemblyPath
```



The result of this query shows you the path where the file Passlogix.MsSql.Decoding.dll should go.

You will need to create the folder where this file will be placed:

1. Browse to the path which resulted from the query above.
2. Create a folder named CLR.
3. Place the Passlogix.MsSql.Decoding.dll in this folder.

4. Right click on **PLXReporting** and select **New Query**. These SQL scripts allow the reporting tool to securely and efficiently store data into the reporting events table. Execute the following scripts independently:

```
sp_DecodeEvents_1.sql script

sp_DecodeEvents_2.sql script

sp_WriteEventsAsIs.sql script

sp_WriteEvents.sql script
```

Next Steps

Once the database is configured for storing events, you must set up the Oracle Enterprise Single Sign-on Suite Plus products to capture event information and send the events to the SSO Reporting Service, which will save it to the SQL database.

Each product contains a document describing how to perform this setup, for example, *Configuring ESSO-LM to Log Events for Reporting*. These are located on the [Passportal](#) under the specific product directory.



Oracle Enterprise Single Sign-on Suite Plus Reporting version 11.1.1.2.0 only supports Client-side events for ESSO-LM version 11.1.1.2.0.