

Oracle® Enterprise Single Sign-on
Password Reset

How-To: Configuring an Oracle 10g
Database Instance for ESSO-PR

Release 11.1.1.2.0

20417-01

Oracle Enterprise Single Sign-on Password Reset How-To: Configuring an Oracle 10g Database Instance for ESSO-PR

Release 11.1.1.2.0

20417-01

Copyright © 2010, Oracle. All rights reserved.

The Programs (which include both the software and documentation) contain proprietary information; they are provided under a license agreement containing restrictions on use and disclosure and are also protected by copyright, patent, and other intellectual and industrial property laws. Reverse engineering, disassembly, or decompilation of the Programs, except to the extent required to obtain interoperability with other independently created software or as specified by law, is prohibited.

The information contained in this document is subject to change without notice. If you find any problems in the documentation, please report them to us in writing. This document is not warranted to be error-free.

Except as may be expressly permitted in your license agreement for these Programs, no part of these Programs may be reproduced or transmitted in any form or by any means, electronic or mechanical, for any purpose.

If the Programs are delivered to the United States Government or anyone licensing or using the Programs on behalf of the United States Government, the following notice is applicable:

U.S. GOVERNMENT RIGHTS Programs, software, databases, and related documentation and technical data delivered to U.S. Government customers are "commercial computer software" or "commercial technical data" pursuant to the applicable Federal Acquisition Regulation and agency-specific supplemental regulations. As such, use, duplication, disclosure, modification, and adaptation of the Programs, including documentation and technical data, shall be subject to the licensing restrictions set forth in the applicable Oracle license agreement, and, to the extent applicable, the additional rights set forth in FAR 52.227-19, Commercial Computer Software--Restricted Rights (June 1987). Oracle USA, Inc., 500 Oracle Parkway, Redwood City, CA 94065.

The Programs are not intended for use in any nuclear, aviation, mass transit, medical, or other inherently dangerous applications. It shall be the licensee's responsibility to take all appropriate fail-safe, backup, redundancy and other measures to ensure the safe use of such applications if the Programs are used for such purposes, and we disclaim liability for any damages caused by such use of the Programs.

Oracle, JD Edwards, PeopleSoft, and Siebel are registered trademarks of Oracle Corporation and/or its affiliates. Other names may be trademarks of their respective owners.

The Programs may provide links to Web sites and access to content, products, and services from third parties. Oracle is not responsible for the availability of, or any content provided on, third-party Web sites.

You bear all risks associated with the use of such content. If you choose to purchase any products or services from a third party, the relationship is directly between you and the third party. Oracle is not responsible for:

(a) the quality of third-party products or services; or (b) fulfilling any of the terms of the agreement with the third party, including delivery of products or services and warranty obligations related to purchased products or services. Oracle is not responsible for any loss or damage of any sort that you may incur from dealing with any third party.

Table of Contents

Table of Contents.....	3
Introduction	4
About This Guide.....	4
Prerequisites	4
Terms and Abbreviations	4
Accessing ESSO-PR Documentation	4
Configuring an Oracle 10g Database Instance for ESSO-PR.....	5
Overview	5
Step 1: Creating an Oracle 10g Database Instance	5
Step 2: Establishing Connectivity Between ESSO-PR Server and the Database	14
Step 3: Configuring the Database Schema for ESSO-PR Data	21
Step 4: Configuring ESSO-PR to Store Data in the Database	22

Introduction

About This Guide

This document describes how to configure an Oracle 10g database instance for ESSO-PR and how to configure ESSO-PR to store its data in that database instance.

Prerequisites

Readers of this document should have a solid understanding of databases, the Structured Query Language (SQL) syntax, and the Oracle 10g database management system and related software. Familiarity with the ESSO-PR and ESSO-LM software suites is highly recommended.

Note: The procedures in this guide require that the ESSO-PR server environment and accounts have been set up as outlined in the *ESSO-PR Server Installation and Setup Guide*.

Terms and Abbreviations

The following table describes the terms and abbreviations used throughout this guide:

Term or Acronym	Description
ESSO-PR	Oracle Enterprise Single Sign-on Password Reset
ESSO-LM	Oracle Enterprise Single Sign-on Logon Manager
Server	ESSO-PR Server
Client	ESSO-PR client-side software
Console	ESSO-PR Administrative Console

Accessing ESSO-PR Documentation

We continually strive to keep ESSO-PR documentation accurate and up to date. For the latest version of this and other ESSO-PR documents, visit http://download.oracle.com/docs/cd/E15624_01/index.htm.

Configuring an Oracle 10g Database Instance for ESSO-PR

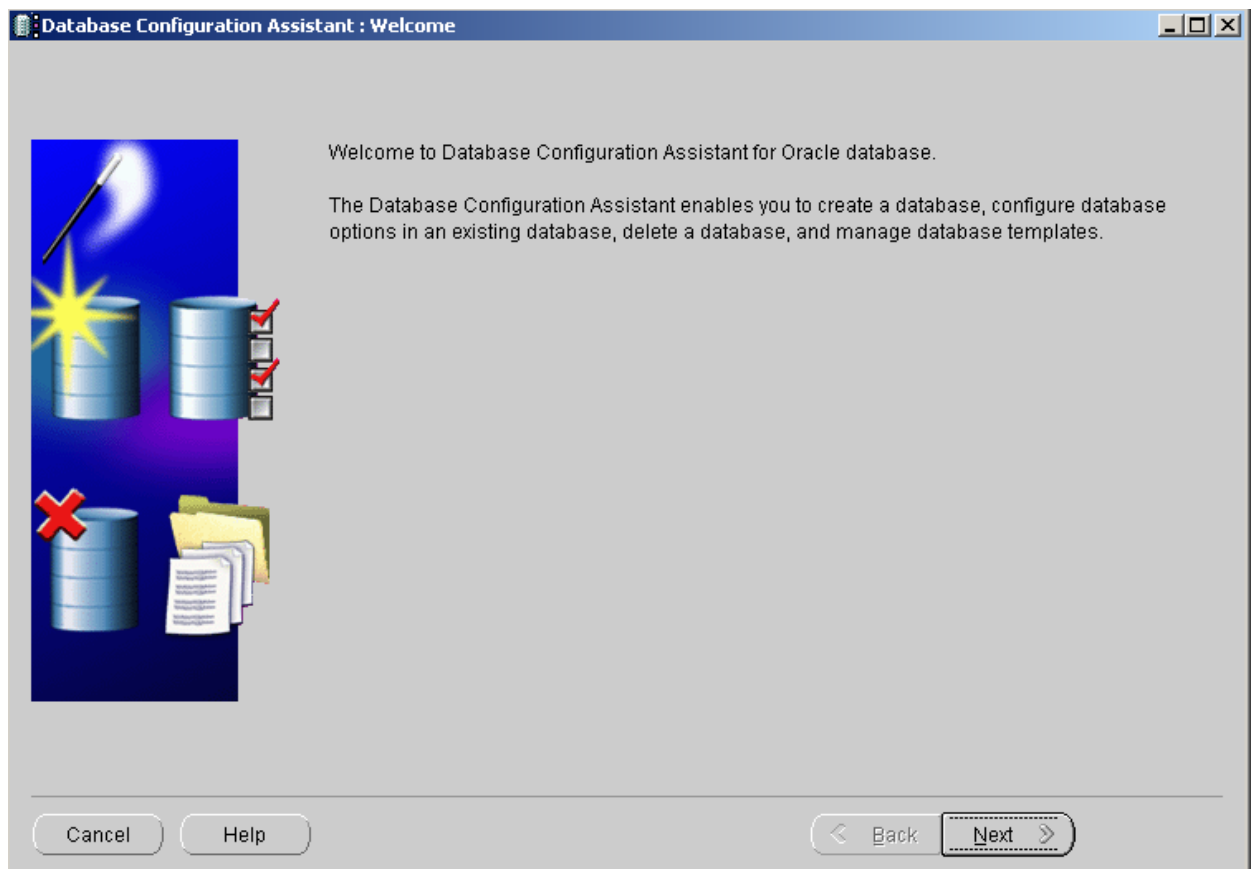
Overview

This part describes how to create and configure an Oracle database instance that will be used by ESSO-PR to store its data.

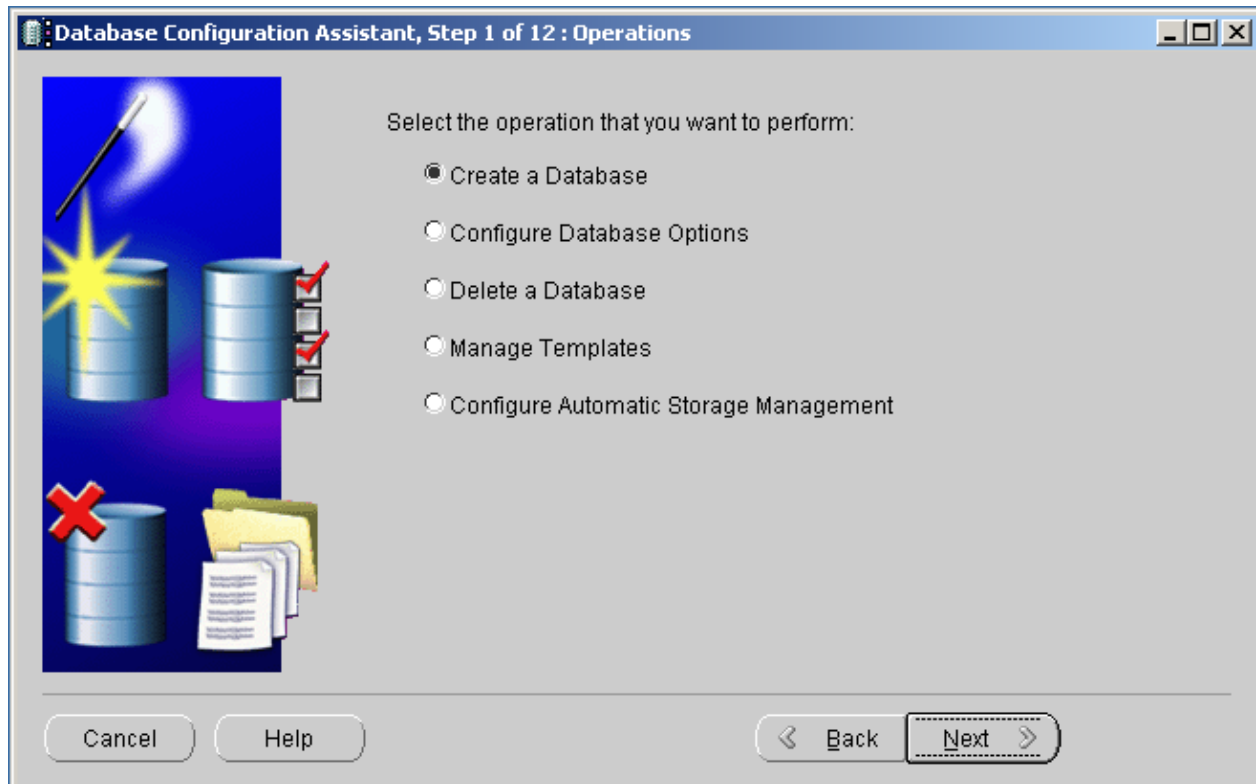
Step 1: Creating an Oracle 10g Database Instance

Complete the steps below to create an Oracle 10g database instance suitable for ESSO-PR.

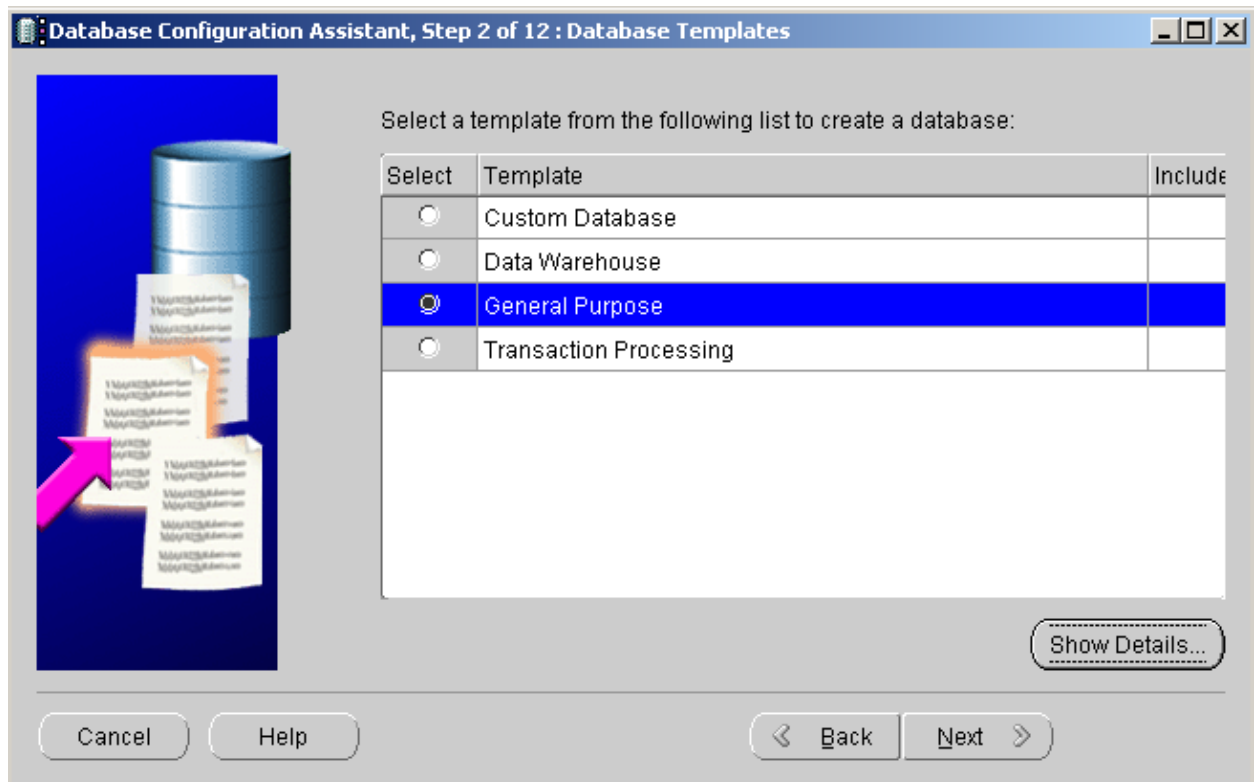
1. Launch the Oracle 10g Database Configuration Assistant. In the “Welcome” screen that appears, click **Next**.



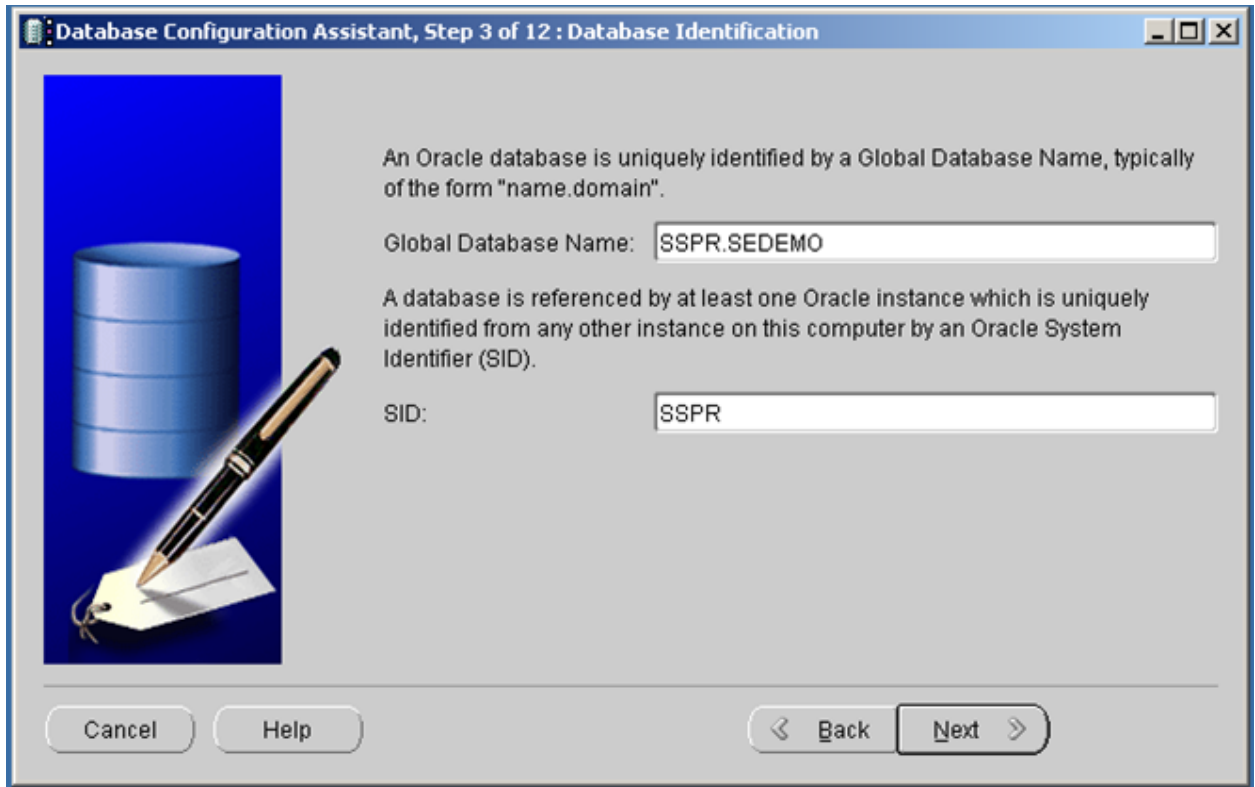
2. In the “Operations” screen, select **Create a Database** and click **Next**.



3. In the “Database Templates” screen, select **General Purpose** and click **Next**.



4. In the "Database Identification" screen, enter a unique name and SID (system identifier) for this database instance. (For more information on Oracle naming conventions, refer to the Oracle 10g database documentation.)



5. In the “Management Options” screen, do the following:
 - a. Select the **Configure the Database with Enterprise Manager** check box.
 - b. Select the **Use Database Control for Database Management** radio button.
 - c. Click **Next**.

Database Configuration Assistant, Step 4 of 12: Management Options

Each Oracle database may be managed centrally using the Oracle Enterprise Manager Grid Control or locally using the Oracle Enterprise Manager Database Control. Choose the management option that you would like to use to manage this database.

Configure the Database with Enterprise Manager

Use Grid Control for Database Management

Management Service: No Agents Found

Use Database Control for Database Management

Enable Email Notifications

Outgoing Mail (SMTP) Server:

Email Address:

Email Address:

Enable Daily Backup

Backup Start Time: 02:00 AM PM

OS Username:

Password:

Cancel Help Back Next

- In the "Database Credentials" screen, enter a suitable password for each of the database management accounts (SYS, SYSTEM, DBSNP, SYSMAN). (For more information on these accounts, see the Oracle 10g database documentation.)

Database Configuration Assistant, Step 5 of 12 : Database Credentials

For security reasons, you must specify passwords for the following user accounts in the new database.

Use the Same Password for All Accounts

Password:

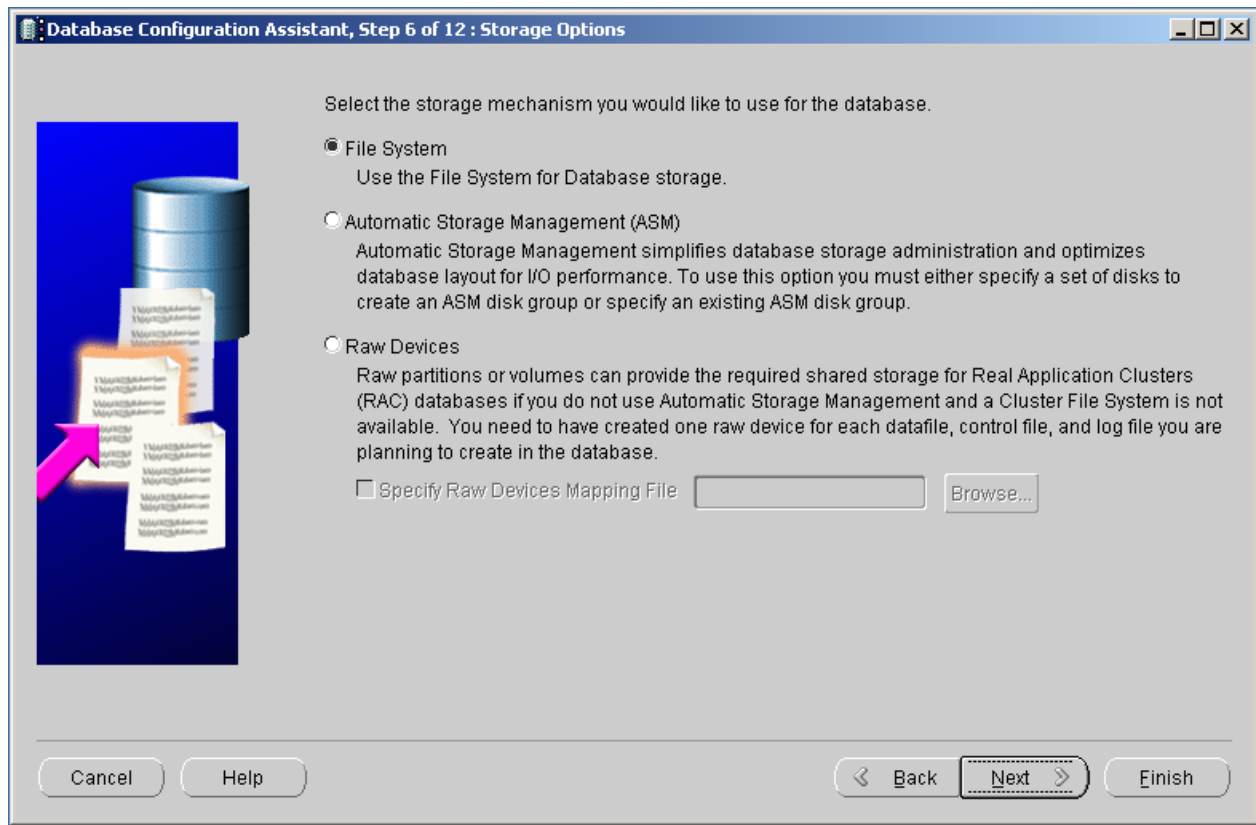
Confirm Password:

Use Different Passwords

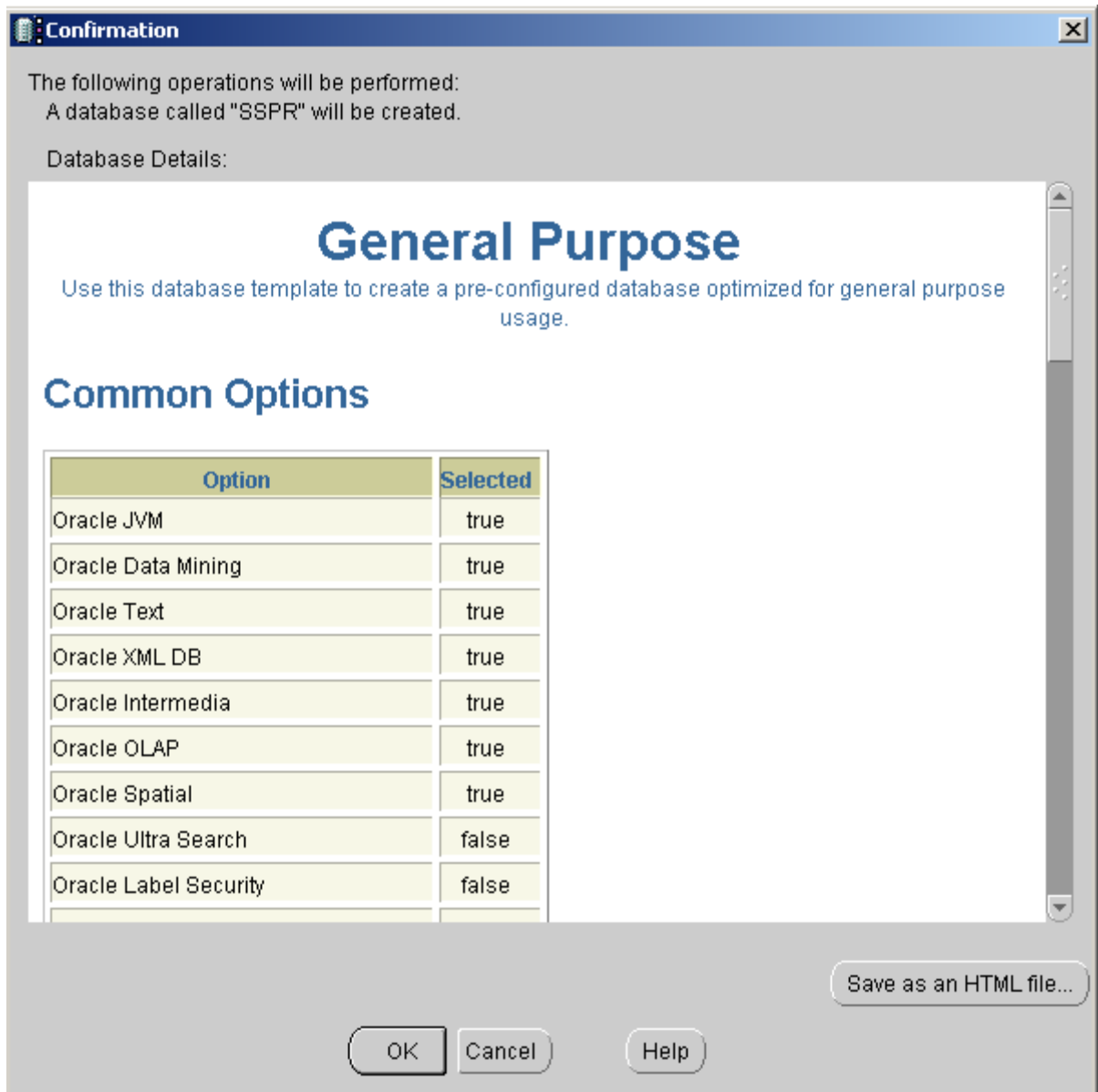
User Name	Password	Confirm Password
SYS		
SYSTEM		
DBSNMP		
SYSMAN		

Cancel Help Back Next

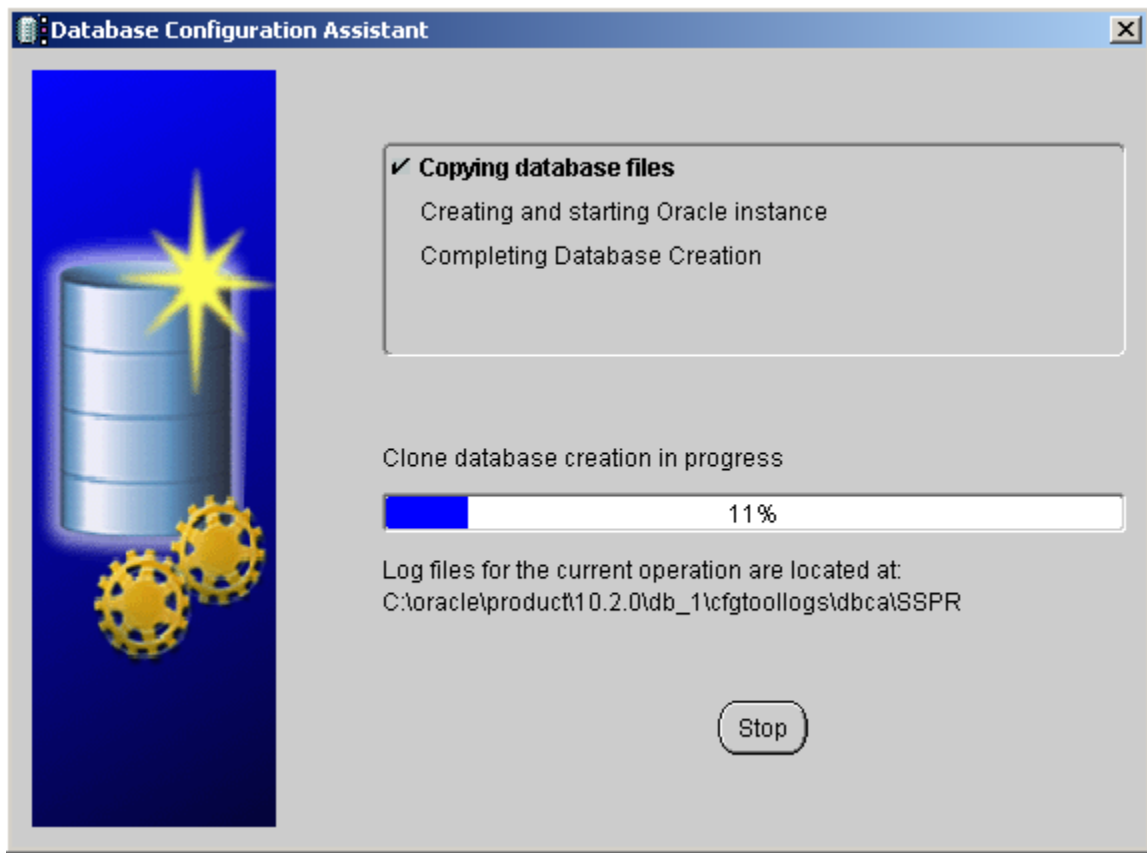
7. In the “Storage Options” screen, select **File System** and click **Finish**.



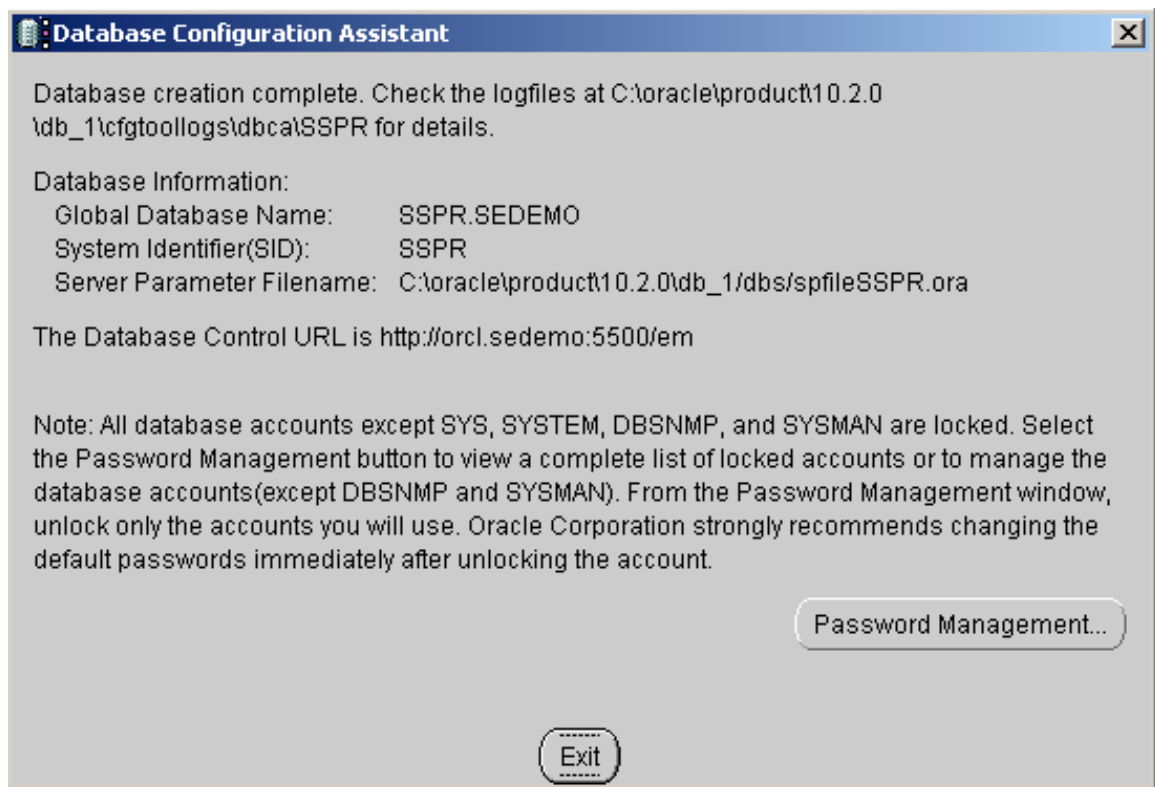
8. In the "Confirmation" screen, review your configuration choices and click **OK**.



9. Wait for the database creation process to complete. A progress indicator is displayed as the database is created.



10. When the database instance is successfully created, click **Exit** and proceed to the next section to configure its schema.



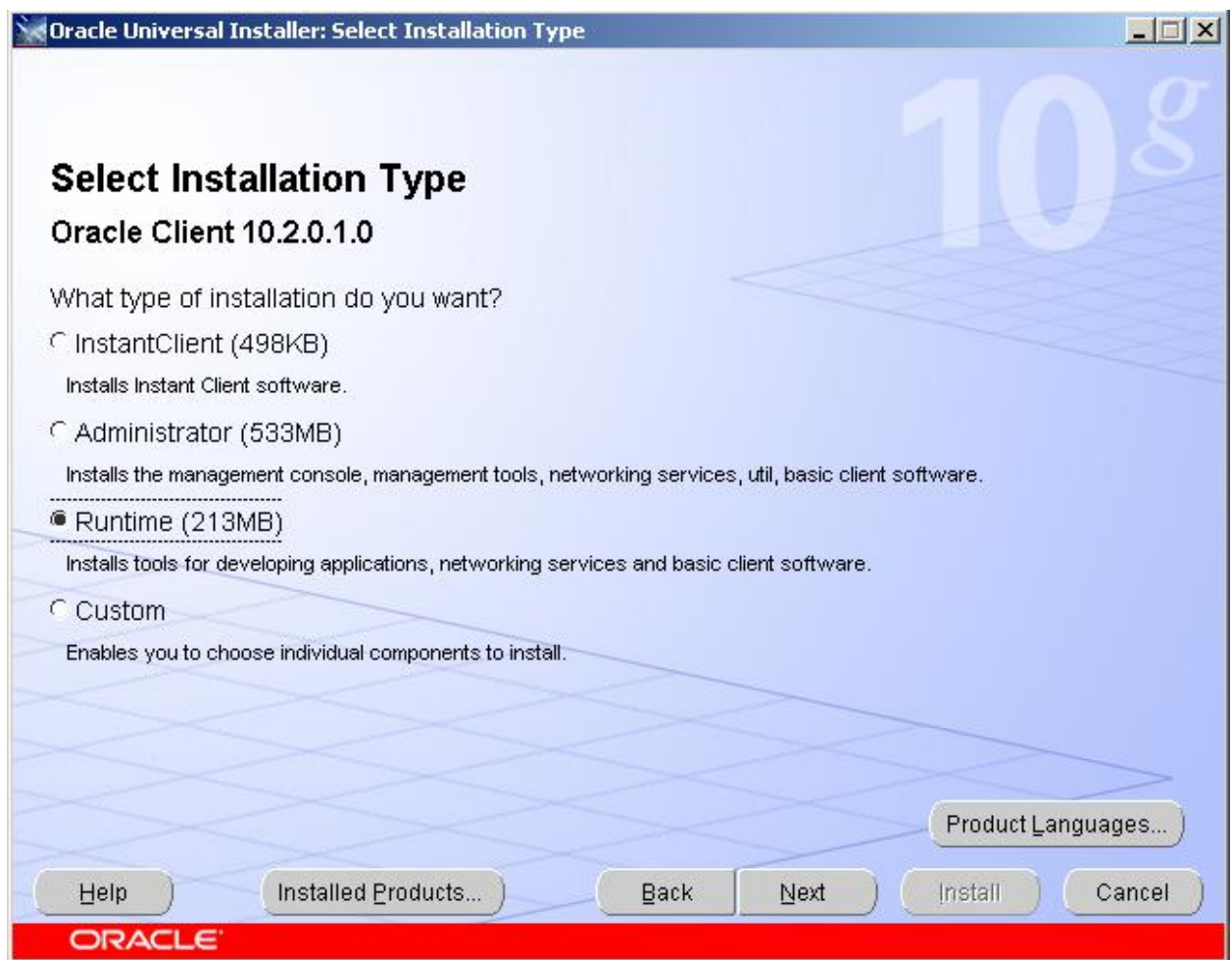
Step 2: Establishing Connectivity between ESSO-PR Server and the Database

After the database instance has been created, you must establish a connection between the ESSO-PR Server and the database instance. Depending on your environment, you must do one of the following:

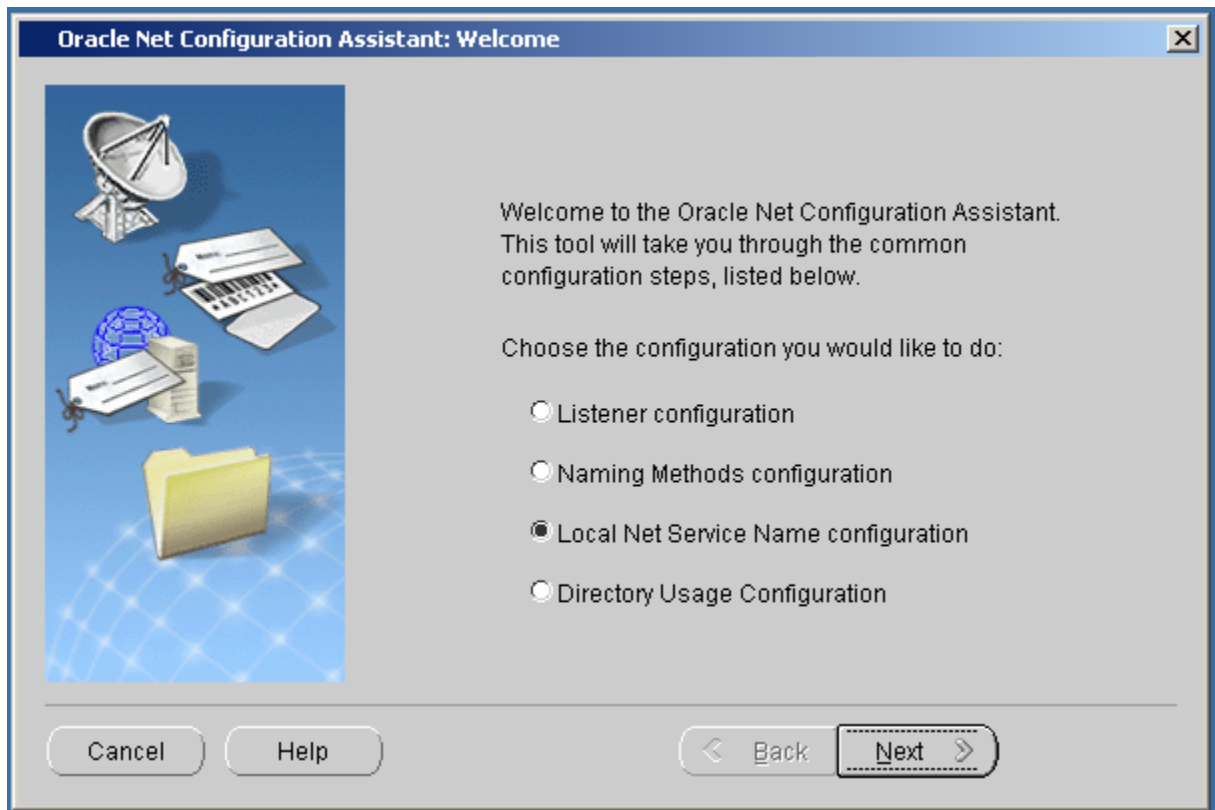
- If the database instance is running on the same machine as ESSO-PR Server, connectivity between the database and ESSO-PR is available automatically. Skip this section and proceed to [Step 3: Configuring the Database Schema for ESSO-PR](#).
- If the database instance is running on a remote machine, you must install the Oracle 10g Database Client on the machine running ESSO-PR Server by completing the steps below.

To install the Oracle 10g Database Client:

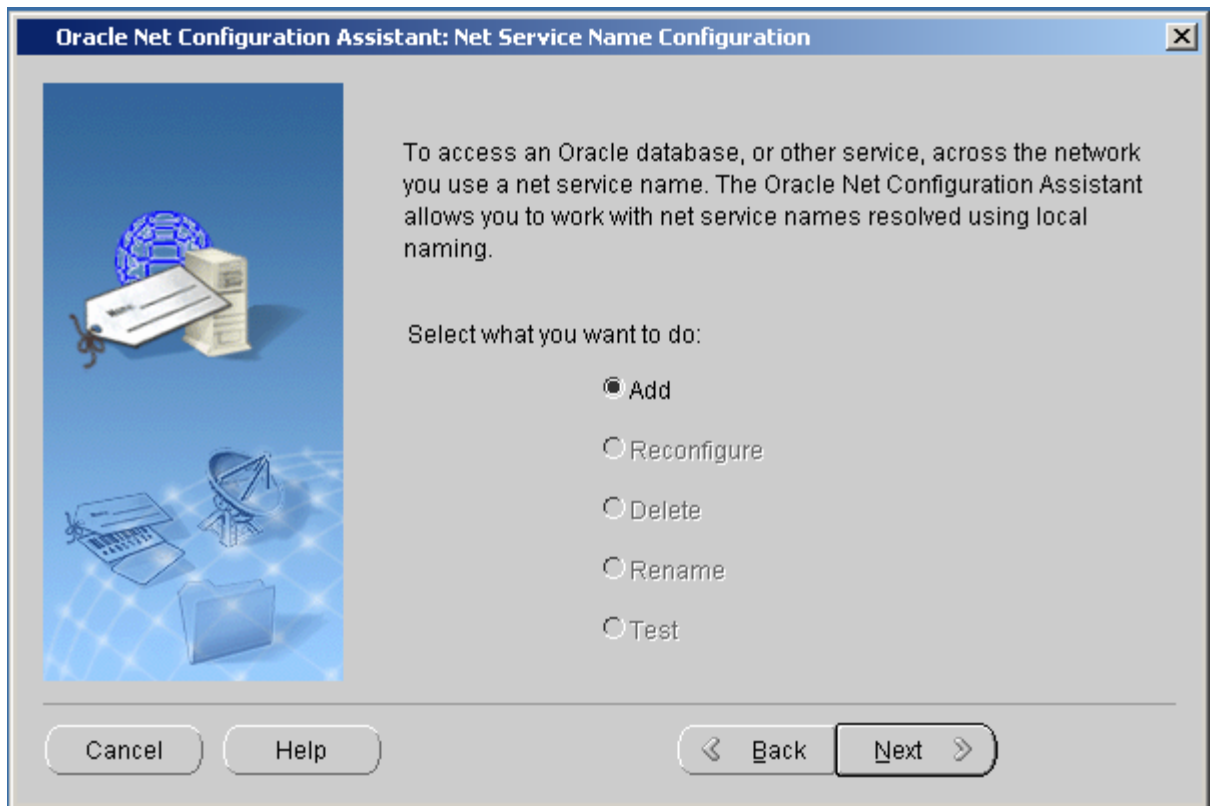
1. Obtain the latest version of the Oracle 10g Database Client from the Oracle website and decompress it into a folder on the machine running ESSO-PR Server.
2. In the “Select Installation Type” screen, select **Runtime** and click **Next**.



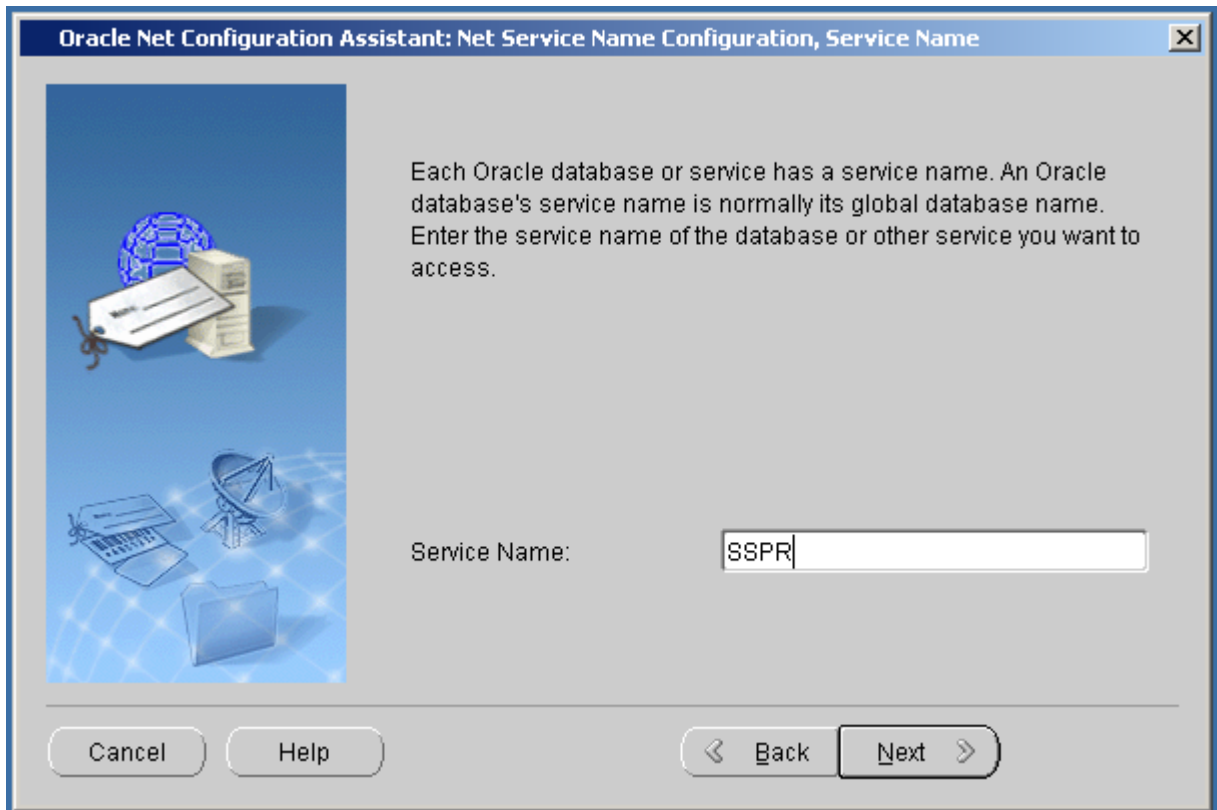
3. Follow the installer prompts to complete the Client installation. The next step is to configure the Client for connection to the ESSO-PR database.
4. Launch the Oracle Net Configuration Assistant. In the “Welcome” screen that appears, select **Local Net Service Name configuration** and click **Next**.



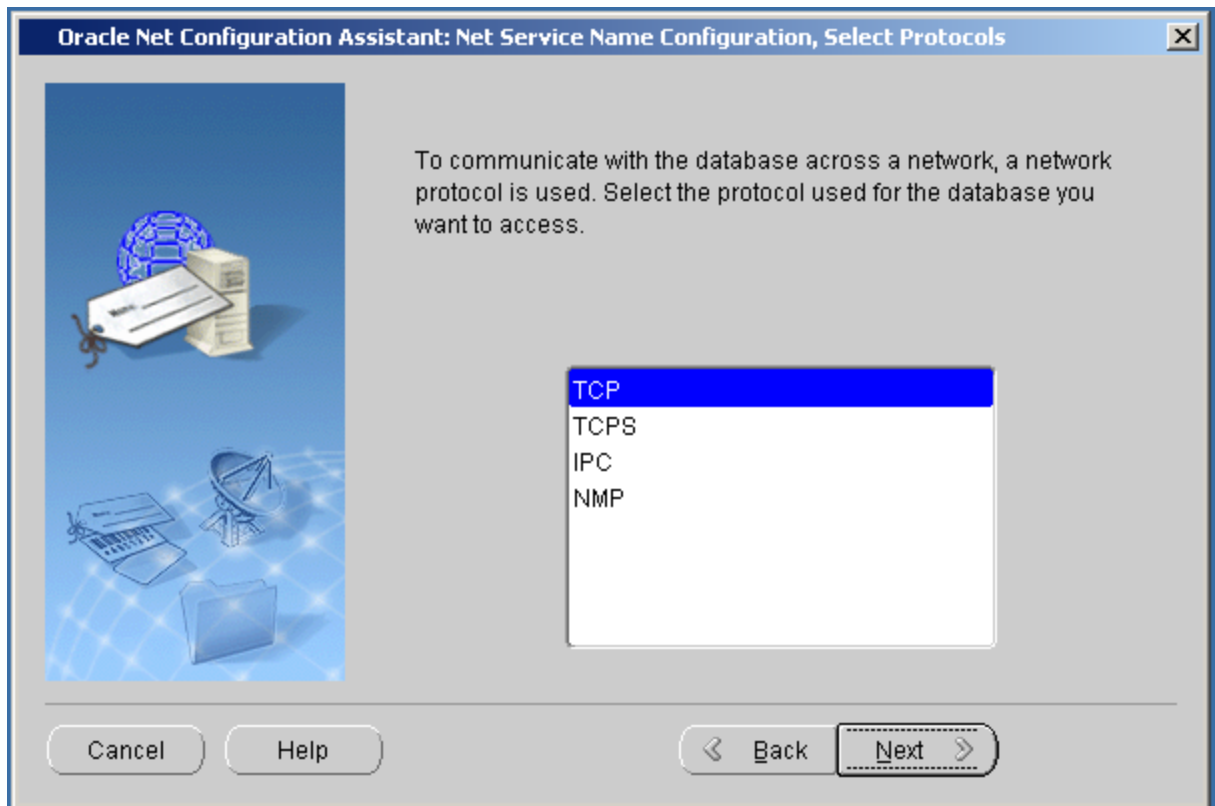
5. In the “Net Service Configuration” screen, select **Add** and click **Next**.



6. In the "Service Name" screen, enter a suitable name for the net service and click **Next**. Oracle recommends the default value, `SSPR`. If your environment calls for a different name, consult the Oracle 10g documentation for more information on the net service naming conventions.



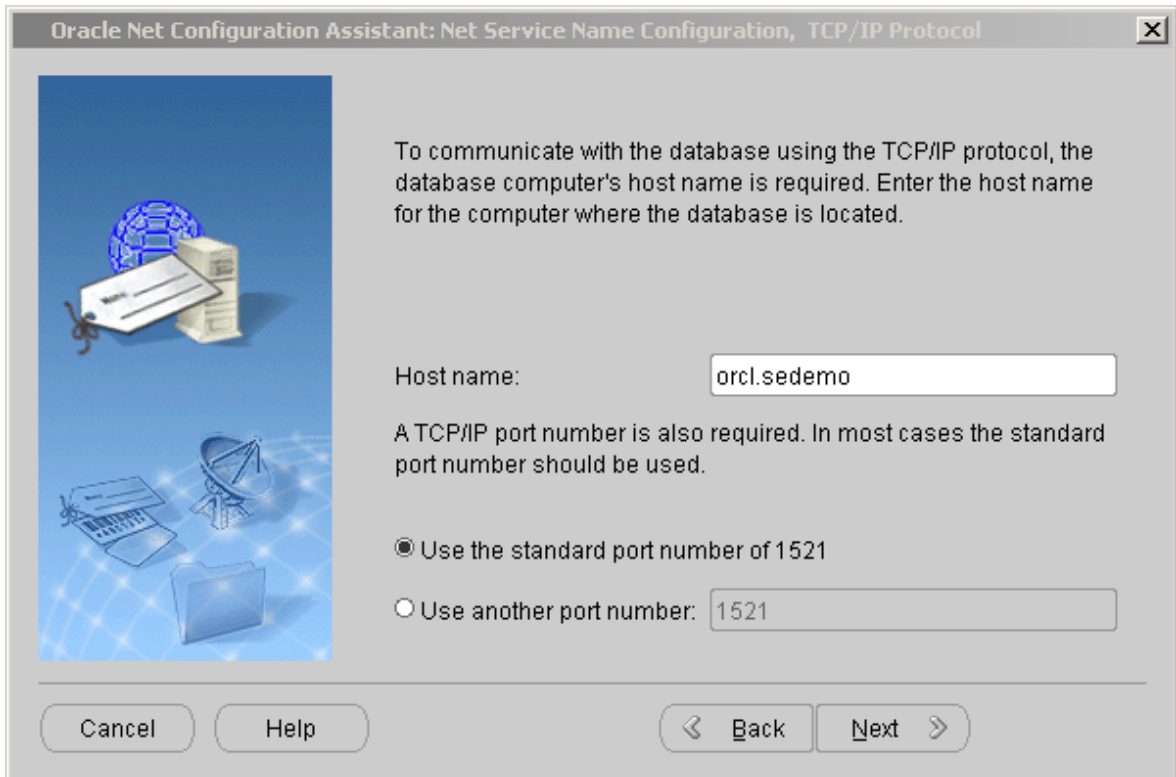
7. In the “Select Protocols” screen, select **TCP** in the list and click **Next**.



8. In the “TCP/IP Protocol” screen, do the following:
 - a. Enter a fully qualified host name of the machine running the target database instance.
 - b. Select Use the standard port number of 1521.

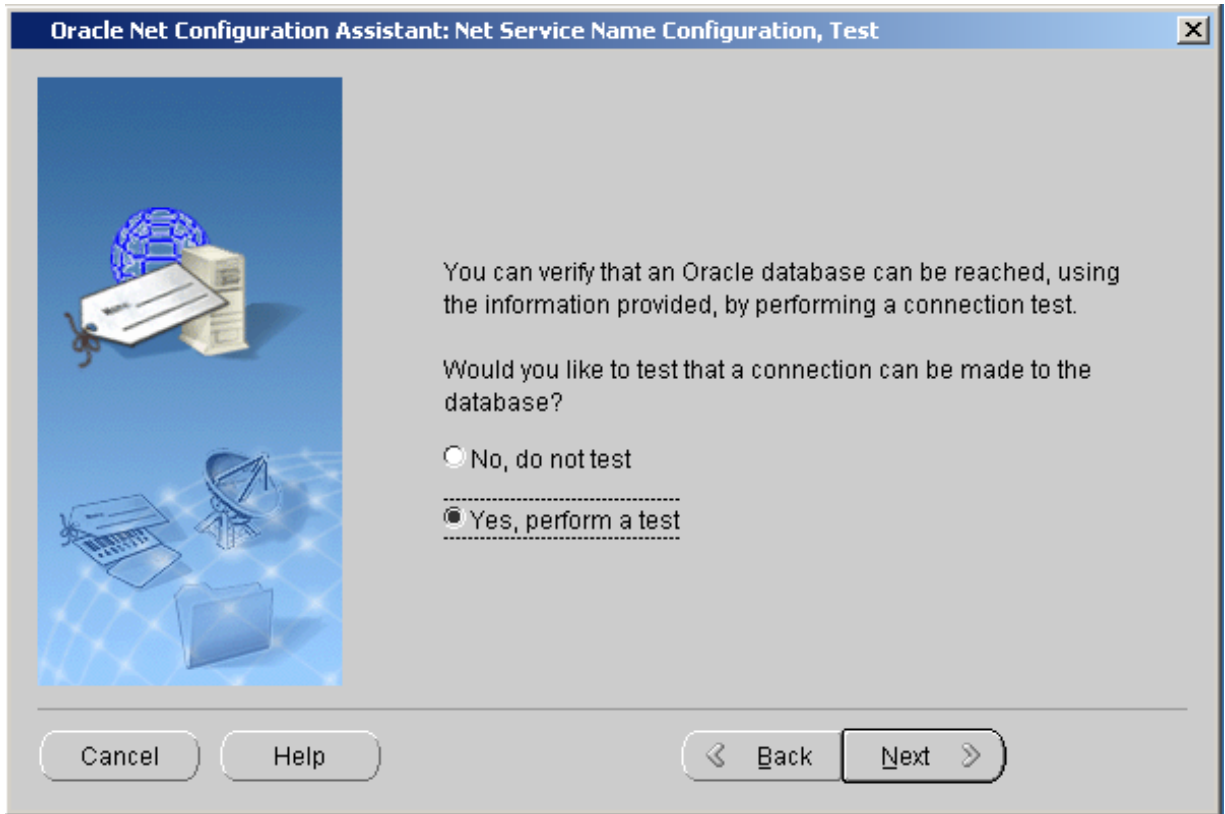
Note: If your environment calls for a port number other than the default, select **Use another port number** and enter the custom port number in the space provided.

- c. Click **Next**.



The screenshot shows the Oracle Net Configuration Assistant dialog box for Net Service Name Configuration, TCP/IP Protocol. The dialog box has a title bar with the text "Oracle Net Configuration Assistant: Net Service Name Configuration, TCP/IP Protocol" and a close button (X). On the left side, there is a blue graphic with icons representing a globe, a computer tower, a satellite dish, and a folder. The main area contains the following text: "To communicate with the database using the TCP/IP protocol, the database computer's host name is required. Enter the host name for the computer where the database is located." Below this text is a text input field labeled "Host name:" containing the text "orcl.sedemo". Below the input field is the text: "A TCP/IP port number is also required. In most cases the standard port number should be used." There are two radio button options: "Use the standard port number of 1521" (which is selected) and "Use another port number:" followed by a text input field containing "1521". At the bottom of the dialog box, there are four buttons: "Cancel", "Help", "< Back", and "Next >".

9. In the “Test” screen, select **Yes, perform a test** and click **Next**.



10. When the test completes, do one of the following:
- If the test is successful, continue to [Step 3: Configuring the Database Schema for ESSO-PR Data](#) to complete the database and ESSO-PR Server configuration.
 - If the test reports an error, double-check your configuration. Refer to the Oracle 10g documentation for troubleshooting.

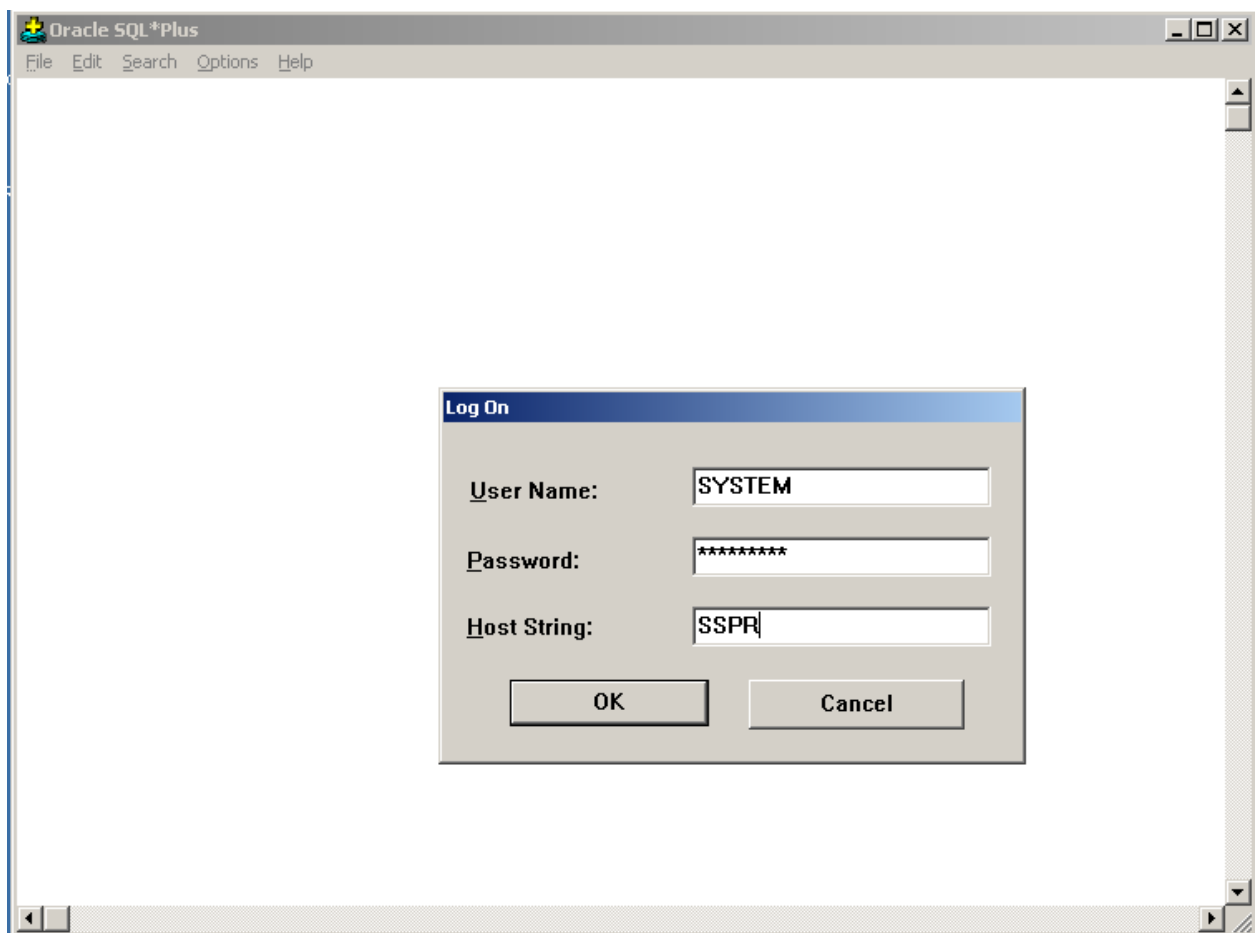
Step 3: Configuring the Database Schema for ESSO-PR Data

Complete the steps below to configure the schema of the database instance you created earlier in this document for use with ESSO-PR.

1. Locate the ESSO-PR DDL (Data Definition Language) script file that defines the schema required by ESSO-PR. The file is named `OracleTables.txt` and can be found on the ESSO-PR Server installation in the following folder:

`C:\Program Files\Passlogix\v-GO SSPR\WebServices`

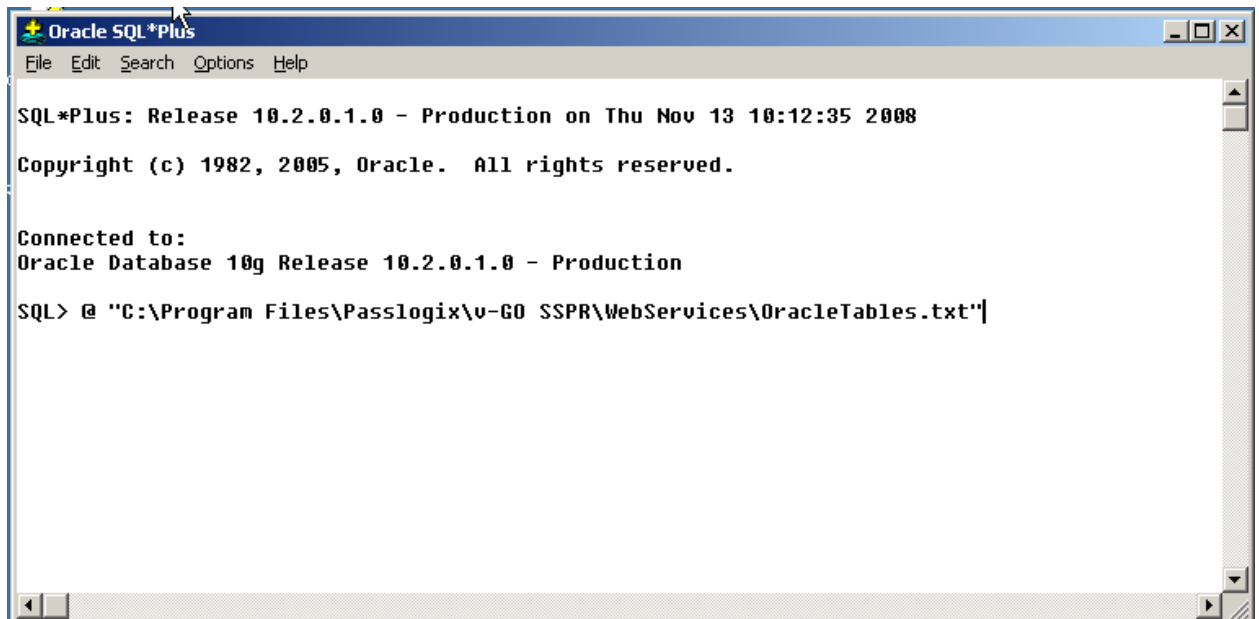
2. Launch the Oracle SQL*Plus client and log on to the ESSO-PR database instance.



- Execute the `OracleTables.txt` script in SQL*Plus to create the required table structure. Use the following command:

```
@ "<ESSO-PR_server_install_path>\WebServices\OracleTables.txt"
```

For example:



```
Oracle SQL*Plus
File Edit Search Options Help

SQL*Plus: Release 10.2.0.1.0 - Production on Thu Nov 13 10:12:35 2008
Copyright (c) 1982, 2005, Oracle. All rights reserved.

Connected to:
Oracle Database 10g Release 10.2.0.1.0 - Production

SQL> @ "C:\Program Files\Passlogix\v-GO SSPR\WebServices\OracleTables.txt"
```

Step 4: Configuring ESSO-PR to Store Data in the Database

- Log in to the ESSO-PR Management Console by pointing your Web browser at the following URL:

<http://<hostname>:<port>/vGoSelfServiceReset/ManagementClient/storage.aspx>

Note: If you have configured ESSO-PR to accept SSL connections, replace `http` with `https` in the above URL.

5. In the left hand pane, click **Storage**.
6. On the “Storage” page, do the following:
 - a. From the **Storage Type** drop-down list, select **Oracle Database**.
 - b. In the **Connection String** field, enter the connection string for the target database instance, then click **Add**. The syntax is as follows (on a single line):

```
Provider=OraOLEDB.Oracle;Data Source=<datasource>;
User Id=<user_id>;Password=<password>
```

where:

- <datasource> - the name of the data source for the target instance
 - <user_id> - ID of the user account used to connect to the target instance
 - <password> – password for the user chosen above
- c. In the **Database Timeout** field, enter a desired value in seconds. Oracle recommends 60 seconds as a default.
 - d. Click **Submit**.

Storage Configuration	
Storage Type	Oracle Database
Connection String	<input type="text"/> <input type="button" value="Add"/>
Database Connections	<div style="border: 1px solid gray; padding: 5px;"> Provider=OraOLEDB.Oracle;Data Source= </div> <input type="button" value="Delete"/>
Database Timeout	<input type="text" value="60"/> Seconds
Storage Initialization	
<i>Initializing prepares the storage location for use by v-GO SSPR and involves:</i> <ul style="list-style-type: none"> • Extending the schema (directory types only) • Creating the main container/database • Granting read/write access to web service account • Creating required child objects/tables 	
Initialize storage for v-GO SSPR	<input type="checkbox"/>
Connect As (User Name)	<input type="text"/>
Password	<input type="text"/>
<input type="button" value="Submit"/>	

ESSO-PR is now configured for storing its data in the Oracle 10g database instance you created. See the *How-To* guide *Understanding the ESSO-PR Database Schema* for more information on, and examples of, the data ESSO-PR stores in the database, and how this data is organized.