

# Oracle<sup>®</sup> Applications

One-Hour Install Guide

Release 11 for Windows NT

March 1999

Part No. A69043-01

---

One-Hour Install Guide, Release 11 for Windows NT

Part No. A69043-01

Copyright © 1999, Oracle Corporation. All rights reserved.

Primary Author: Carole Eubanks

Contributors: Subash Chadalavada, Michael Fiore, Vincent Lee, K.R. Narayanan, Andrew Rist, Chris Tanabe

The Programs (which include both the software and documentation) contain proprietary information of Oracle Corporation; they are provided under a license agreement containing restrictions on use and disclosure and are also protected by copyright, patent, and other intellectual and industrial property laws. Reverse engineering, disassembly, or decompilation of the Programs is prohibited. Reverse engineering, disassembly, or decompilation of the Programs, except to the extent required to obtain interoperability with other independently created software or as specified by law, is prohibited.

The information contained in this document is subject to change without notice. If you find any problems in the documentation, please report them to us in writing. Oracle Corporation does not warrant that this document is error free. Except as may be expressly permitted in your license agreement for these Programs, no part of these Programs may be reproduced or transmitted in any form or by any means, electronic or mechanical, for any purpose, without the express written permission of Oracle Corporation.

If the Programs are delivered to the U.S. Government or anyone licensing or using the programs on behalf of the U.S. Government, the following notice is applicable:

**Restricted Rights Notice** Programs delivered subject to the DOD FAR Supplement are "commercial computer software" and use, duplication, and disclosure of the Programs, including documentation, shall be subject to the licensing restrictions set forth in the applicable Oracle license agreement. Otherwise, Programs delivered subject to the Federal Acquisition Regulations are "restricted computer software" and use, duplication, and disclosure of the Programs shall be subject to the restrictions in FAR 52.227-19, Commercial Computer Software - Restricted Rights (June, 1987). Oracle Corporation, 500 Oracle Parkway, Redwood City, CA 94065.

The Programs are not intended for use in any nuclear, aviation, mass transit, medical, or other inherently dangerous applications. It shall be the licensee's responsibility to take all appropriate fail-safe, backup, redundancy, and other measures to ensure the safe use of such applications if the Programs are used for such purposes, and Oracle Corporation disclaims liability for any damages caused by such use of the Programs.

Oracle is a registered trademark, and Context, EMM Advantage, Net8, Oracle Alert, Oracle Application Object Library, Oracle ConText, Oracle Financials, Oracle *MetaLink*, Oracle Office, Oracle Quality, Oracle Web Customers, Oracle Web Employees, Oracle Work in Process, Oracle Workflow, Oracle8, Oracle8i, PL/SQL, Pro\*C, Pro\*C++, SmartClient, SQL, SQL\*Forms, SQL\*Loader, SQL\*Net, SQL\*Plus, SQL\*Report, and Web Agent are trademark[s] or registered trademark[s] of Oracle Corporation. All other company or product names mentioned are used for identification purposes only and may be trademarks of their respective owners.

---

---

# Contents

<b>Send Us Your Comments .....</b>	<b>v</b>
<b>Preface.....</b>	<b>vii</b>
Installing Oracle Applications Manually .....	vii
Using One-Hour Install.....	vii
About this Guide.....	viii
Related Documentation .....	viii
<b>1 What To Do First</b>	
<b>Getting Ready to Install .....</b>	<b>1-1</b>
<b>Running the Installation .....</b>	<b>1-2</b>
CD Install .....	1-2
Staged Install .....	1-3
<b>2 Single-Node Installation</b>	
<b>Running the Installation .....</b>	<b>2-2</b>
<b>Finishing the Installation .....</b>	<b>2-6</b>
<b>3 Multi-Node Installation</b>	
<b>Running the Installation .....</b>	<b>3-1</b>
<b>The Execution Plan .....</b>	<b>3-6</b>
<b>Install Using the Configuration File Option.....</b>	<b>3-6</b>

## 4 Post-Install Tasks

General Post-Install Tasks .....	4-1
Optional Post-Install Tasks .....	4-3

## 5 One-Hour Install Specifications

Configuration File Parameter Defaults .....	5-1
Restored Databases .....	5-3
Production and Test Database .....	5-3
Vision Demonstration Database .....	5-5
Application and Forms Server Settings .....	5-6
Oracle Application Server Settings .....	5-6
Forms Server Settings .....	5-8
Disk Space Requirements .....	5-8
Installation Rules for Defaults .....	5-9

## Index





---

---

# Preface

One-Hour Install minimizes the time required to install Oracle Applications and the Oracle8 Server technology stack by automating many of the required steps. It provides standard configurations and, therefore, needs only minimum intervention and input during the installation process. In addition, when you use One-Hour Install you can be sure that you are installing the most current version of Oracle Applications without having to apply maintenance packs.

## Installing Oracle Applications Manually

If you do not use One-Hour Install, you must install Oracle Applications manually. With the manual installation method, you must first create an Oracle8 database and prepare it for Oracle Applications, then use AutoInstall to install objects in the database, to lay out Oracle Application files in the file system, to compile flexfields, and to generate message files. You must install all the required technology stack products before you run AutoInstall. This process may take more than a day to complete.

AutoInstall is used only for major Oracle Applications releases. Minor releases are provided as maintenance packs. If you are installing Oracle Applications for the first time, you install the technology stack components, then run AutoInstall to install Oracle Applications, then apply maintenance packs for the latest release.

## Using One-Hour Install

Using One-Hour Install you can install:

- the required Oracle8 technology stack and Oracle Applications
- a pre-configured database (base products with only AOL activated)

- the Vision Demonstration database
- a test database (base products with only AOL activated)

## About this Guide

This *One-Hour Install Guide* contains the following chapters:

- |           |   |
|-----------|---|
| Chapter 1 | Describes the tasks that you need to perform before you begin to your One-Hour Installation and the steps necessary for running the installation from the installation CDs or from a staging area.  |
| Chapter 2 | Describes a single-node installation. This means that the database server, administration server, concurrent processing server, forms server, and web server are all installed on the same machine. You can use the default installation parameters specified in the predefined configuration file, or you can change them to suit your needs.  |
| Chapter 3 | Discusses multi-node installations. This means that you create configuration files first, then use the Oracle Installer to install Oracle Applications and the technology stack on different machines using these configuration files.  |
| Chapter 4 | Lists the tasks to perform after installation. No matter what type of installation you choose, you must set up your servers and perform other optional tasks, such as installing additional products, installing Multiple Reporting Currencies, or installing localizations. Because the information in this chapter is more complex, you will need to refer to other manuals and online documentation where indicated. |
| Chapter 5 | Provides technical information about the default installation parameters and settings One-Hour Install uses for reference. You may need to refer to this chapter during the installation and in the future, as it documents your environment setup.   |

## Related Documentation

The following documentation provides additional reference material that may be helpful when using One-Hour Install.

- *One-Hour Install Release Notes*

Oracle Applications requires underlying Oracle8 software system products, called the technology stack, such as the Oracle8 Server and Oracle Application Server. One-Hour Install asks for information on where to install these components and then installs them for you. The *One-Hour Install Release Notes* provide the version numbers of each of these components.

- *Oracle Applications Architecture*

The various functions of Oracle Applications and the technology stack are distributed among several levels, or tiers, of machines. *Oracle Applications Architecture* explains this architecture in detail.

- *Oracle Applications Installation*

One-Hour Install is optional. You can still install Oracle Applications and all technology stack components by following the instructions in *Oracle Applications Installation*. For example, if you need to create your database with custom settings not available in One-Hour Install, you should follow the paths for manual installation described in *Installation*.

- *Oracle8 Installation Guide*

Some tasks needed to run One-Hour install, such as creating database user accounts, are covered in the *Oracle8 Installation Guide* for your platform.



---

---

# What To Do First

Before you run One-Hour Install, you must first create a Windows NT user account that has system administrator privileges. You can then run One-Hour Install directly from the CDs, or from a staging area where you have unloaded all the necessary files. Running One-Hour Install directly from the CDs requires that you switch CDs a number of times during the installation. Running from a staged area allows you to complete the installation unattended after you have unloaded all the files.

## Getting Ready to Install

Create a Windows NT account with system administrator privileges. This account will own the Oracle8 Server technology stack and the Oracle Applications file system. You will use this account to run the One-Hour install. Log in to the account you have created.

Depending on how many environments you install, the disk space required to accommodate the Oracle8 technology stack, the Oracle Applications file system, and the database and control files associated with each database instance can be quite large. Review the specifications in Chapter 5 to see if you have enough disk space.

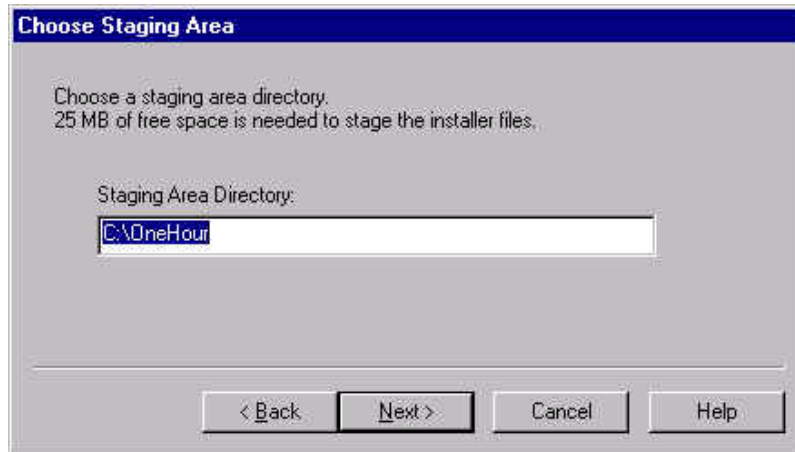
## Running the Installation

To run the installation, insert the *One-Hour Install* CD #1 in your CD-ROM drive. When the One-Hour Install Wizard dialog box appears, you will have the option to view the Release Notes or Install Guide documentation, or to begin the installation.



### CD Install

To run One-Hour Install directly from the installation CDs, choose CD Install. One-Hour Install prompts you for the location of a temporary staging area.



In the Choose Staging Area dialog box, type the directory where you want to unload the installation files. Click Next and then click Finish to start the copy process. One-Hour Install begins to copy the files from the CD to the temporary directory that you indicated.

Once the copy process is complete, the Oracle Installer appears. If you are installing on a single node, proceed to Chapter 2 and follow the instructions. If you are installing on multiple nodes, proceed to Chapter 3.

---

---

**Note:** Be sure to keep all the One-Hour Install CD-ROMs handy as you proceed with your installation. You will be prompted to insert each one at different times during the installation process.

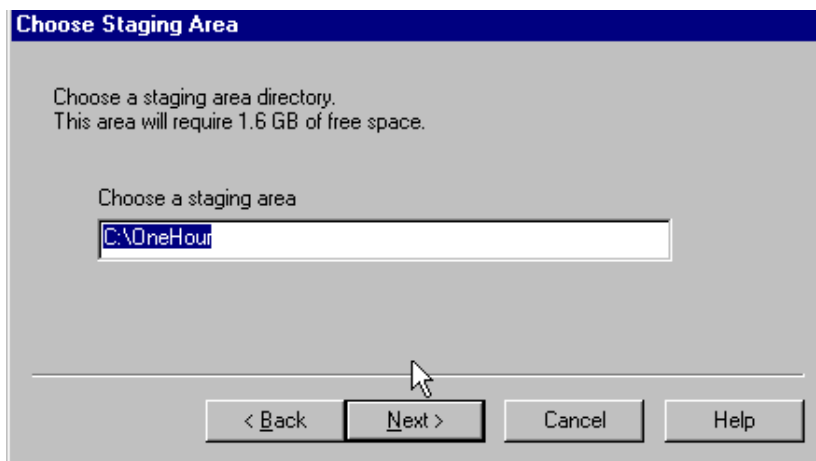
---

---

## Staged Install

A staged install unloads the contents of *One-Hour Install* CD #1, 2, and 3 to a staging area before starting the installation process. The advantage of using a staged install is that the installation process can run to completion unattended once you have downloaded the files. You do not have to insert the various CDs.

From the One-Hour Install Wizard dialog box, choose Staged Install to run your installation from a stage directory. In the Choose Staging Area dialog box, type the directory where you want to unload the installation files. This directory is the <STAGE\_HOME> referred to in other sections of this guide.



Click Next and then click Finish to start the unloading process. You will be prompted to insert CDs #2 and #3. Make sure you have at least 1.6 GB of free space in the directory.

---

---

**Note:** After you have inserted a CD, some CD-ROM drives may take a little time to "spin-up." To ensure that your CD-ROM drive is ready, you should wait a few seconds after you insert the CD before you continue with your One-Hour Install session. Usually, the LED indicator on your CD-ROM drive stops flashing when it is ready.

---

---

When all the files are downloaded, the Oracle Installer starts automatically. If you want to continue your installation at a later time, click Cancel to exit.

The Oracle Installer is in the <STAGE\_HOME>\r11apps\install directory. To start your installation at a later time, navigate to this directory with the Windows NT Explorer and click Setup.

If you are installing on a single node, proceed to Chapter 2 and follow the instructions. If you are installing on multiple nodes, proceed to Chapter 3.

---

---

## Single-Node Installation

With a single-node installation, you install the database server and the different Oracle Applications servers (such as the concurrent processing server, administration server, forms server, and the web server) all on a single NT system. All servers share the same Oracle8 Server technology stack and Oracle Applications file system. The Oracle8 Server technology stack, the Oracle Applications database, and the Oracle Applications file system are installed and owned by one user account.

Installation parameters such as the product file directories, database SID, and forms listener port numbers are predefined in a default configuration file. During the installation, you can choose to use these default parameters or you can modify them to suit your purposes.

---

---

**Note:** Review the predefined installation default settings that are listed in Chapter 5. If these settings do not work for your installation, you will need to modify them.

---

---

With a single-node installation, you can install one or more of the following Oracle Applications environments:

- Oracle Applications Release 11 production environment
- Oracle Applications Release 11 test environment
- Vision Demonstration database Release 11 environment

## Running the Installation

When you run your installation, you choose to install in a single environment or a combination of production, Vision Demo, or test environments. Then, use the default configuration parameters or those you specify to install Oracle Applications.

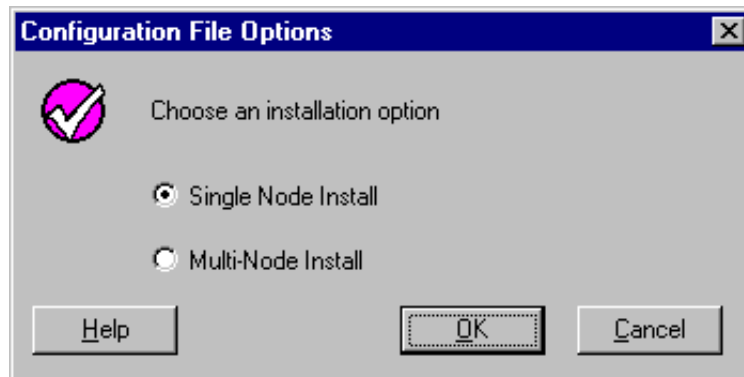
---

**Note:** If you have chosen to run your installation from the CD-ROMs and not from a stage area, be sure to keep all the CDs handy as you proceed with your installation. You will be prompted to insert each one at different times during the installation process.

---

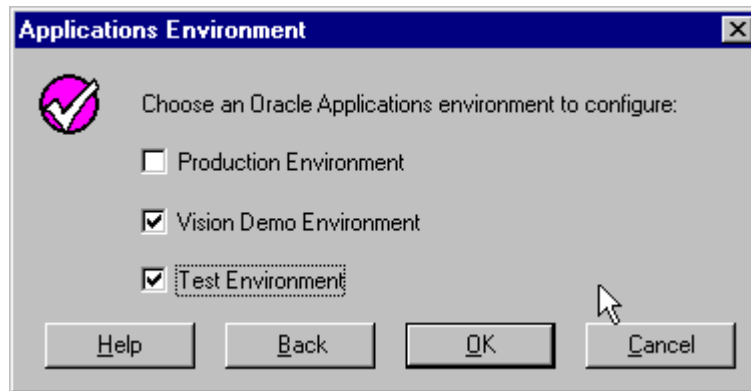
### Step 1. Choose Single-Node Install

Select the Single-Node Install option and click OK.



### Step 2. Choose the environment

Choose a production environment, a Vision Demo environment, a test environment, or any combination. The Oracle Installer uses different default installation settings for each. Chapter 5 summarizes these settings.



---

---

**Note:** You can install a demo and a test environment on the same machine. However, we strongly recommend that you do not install any other environments on the same machine where you install your production environment.

---

---

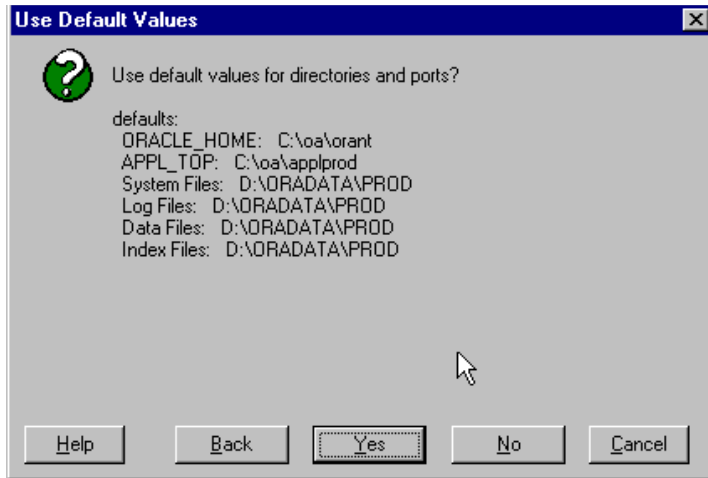
All the environments you select will share the same Oracle8 Server technology stack. The production environment will have its own Oracle Applications file system while the Vision Demo environment and the test environment, if selected together, will share the same file system. All the environments will have their own separate database.

Click OK when you have chosen your environments.

### Step 3. Accept or change default parameters

The next screen asks whether you will use the default installation parameters values. These parameters specify the directories and ports for your installation as well as other configuration information such as the Applications top directory, network port numbers, and database file directories. This information is stored in a

configuration file, which One-Hour Install uses to set up your installation parameters.



If the default parameters suit your needs, click Yes and go to Step 4 to finish your installation.

---

**Note:** Chapter 5 contains a complete list of installation settings and configuration parameters and their default values.

---

If you need to customize any of the settings, click No. The Installer presents you with a series of screens containing the default configuration parameters for each of the environments you chose to install in Step 2. You supply the customized information for each environment.

The installation parameters and a description of each are listed in the following paragraphs in alphabetical order. They may appear in a different order on the screens.

**Admin Port**

In the Oracle Web Application Server 3.0, the Administration listener is automatically configured during installation. This Administration listener can be remotely accessed using a TCP/IP network port for configuring the Oracle Application Server.

---

APPL_TOP	The Oracle Applications top-level directory. The Oracle Applications file system is installed in this directory.
Database File System - DBFS1 through 4 (System Files, Log Files, Data Files, and Index Files)	These directories hold the files belonging to a database instance. The files containing the control files, log tablespaces, data tablespaces, index tablespaces, temp tablespaces, and rollback segment tablespaces are distributed across these four directories.
Database Port	The Net8 process that listens for and accepts incoming connection requests to the Oracle8 Server. Oracle listener processes start Oracle database shadow processes to handle subsequent communications with the client. The listener process is associated with a network port.
Forms Port	A listener process on the forms server listens for requests from the web server on this TCP/IP network port.
Oracle Base	The directory at the base of the Oracle8 Server installation.
Oracle Home	The directory where Oracle8 Server software is installed. The directory contains the Oracle8 Server, Oracle Developer Tools, and Oracle Application Server.
Oracle SID	The name of the database. This name identifies a database instance associated with the Oracle executables.
RPC Port	Oracle Applications uses RPC server processes such as Report Review Agent (FNDFS) and OE Transaction Manager (OEORPC). The server processes are spawned by the Net8 Listener for serving the forms server requests. The listener process is associated with a Net8 network port to handle incoming client communication. In the current installation, we use the same Net8 listener port for all Oracle Application Server RPC programs.
Web Listener	The Web listener process is identified using a unique user-defined name. Each Oracle Applications environment requires a separate Web listener.

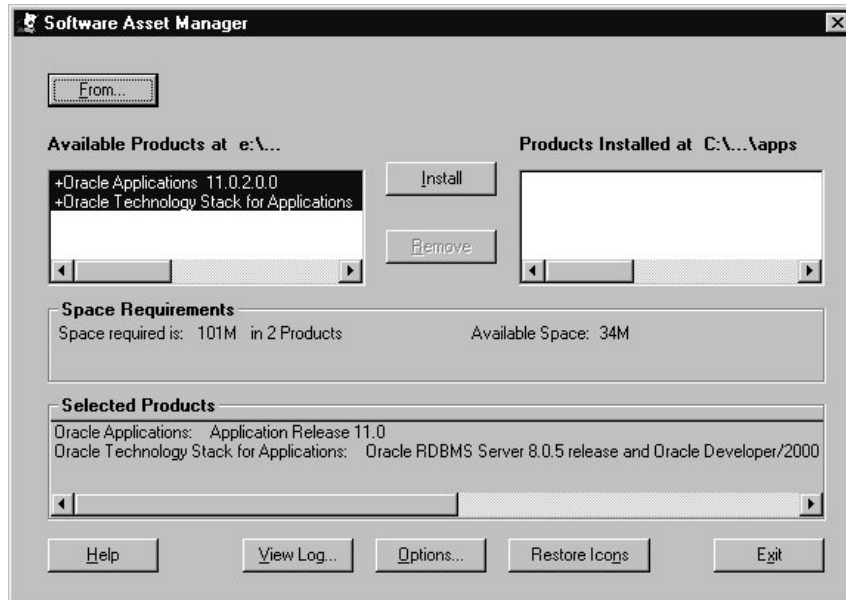
Web Port	The Web listener process is used to communicate with the forms server. It also handles requests for Oracle Self-Service Web Applications. This listener requires a dedicated TCP/IP network port.
UDP Port	In the Oracle Application Server 3.0 architecture, the underlying communications mechanism of the web request broker consists of three processes: address server (mnaddrsrv), RPC server (mnrpcmnsrv), and ORB server (mnorbsrv). They communicate using the User Datagram Protocol (UDP) network protocol. This communication needs a dedicated UDP network port.

## Finishing the Installation

Once you have set your installation parameters by accepting the default values or customizing the parameters, the Installer confirms your choices and begins the installation.

### **Step 4. Verify Software Asset Manager information**

After you accept the parameters or set up your own, the Software Asset Manager screen appears showing which product sets will be installed.



Verify that the information on this screen is correct. For example, if the screen indicates a production database will be installed, and you meant to install a test database or Vision Demo database, you can now cancel the installation and begin the process again to enter the correct installation information. If the information is correct, click **Install**. Once the installation is complete, proceed with the post-install instructions in Chapter 4.



---

---

## Multi-Node Installation

You can install the Oracle8 technology stack and Oracle Applications on a single node, where all Oracle application servers are on one machine, or on multiple nodes. In a multi-node installation, the database server, administration server, concurrent processing server, and forms and web server may be installed on two to four different machines. You can use any combination. You might have the database and the concurrent processing server on one machine, and the administration server, forms and web server on a second. Or you might have each server on a separate machine.

If two or more servers are on the same machine, these servers share the same Oracle8 Server technology stack products and Oracle Applications file system. The Oracle Installer keeps track of this. Once you provide the names of the machines for each server type, the Installer determines which products should be installed on which machines.

---

---

**Note:** One-Hour install always installs the forms server and web server on the same machine. References to the forms server on One-Hour Install screens, online help, and in this manual mean both the forms server and web server together.

---

---

### Running the Installation

Before you run a multi-node installation, you must create and save configuration files, which the Oracle Installer uses to set up your installation. A configuration file contains information about the location of directories and ports and other

parameters such as Applications top directory, network port numbers, and database file directories for each server you designate as a host machine.

---

---

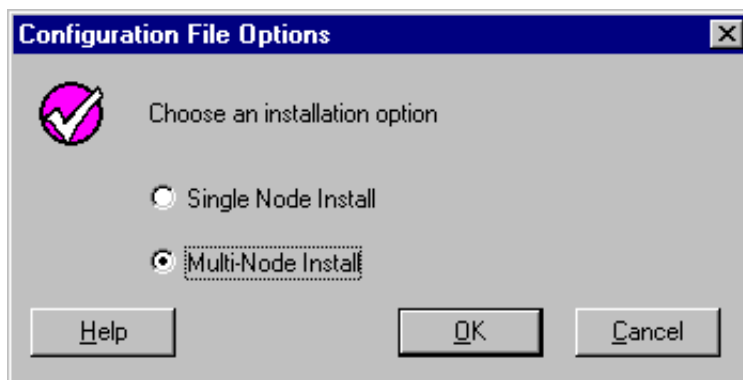
**Note:** If you have chosen to run your installation from the CD-ROMs and not from a stage area, be sure to keep all the CDs handy as you proceed with your installation. You will be prompted to insert each one at different times during the installation process.

---

---

**Step 5. Choose Multi-Node Install**

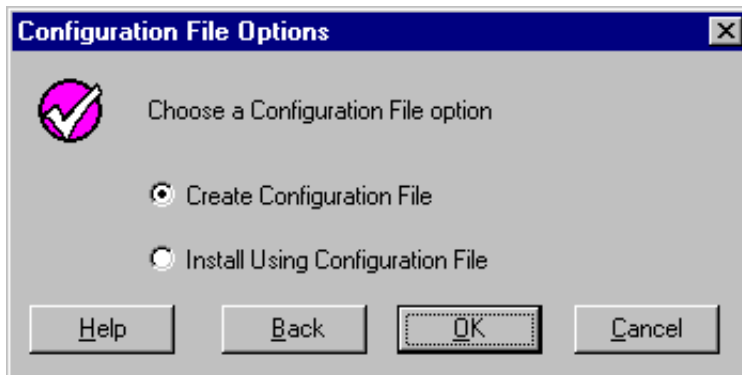
Choose Multi-Node Install and click OK.



The Installer prompts you to create a configuration file.

**Step 6. Create the configuration file**

On the Configuration File Options screen, choose Create Configuration File.



The next screen asks for the name of the file. You may provide any name consistent with the operating system filename conventions. Make a note of the name so that you can supply it to the Oracle Installer when you execute your installation plan.

If you need to install multiple forms servers in your environment, you can later add forms server entries to the configuration file you have saved.

The configuration file you create is portable. You can create it on any machine and ftp or copy it to other servers so that you can run the installation on those servers. Note that in order to use these configuration files to run an installation, you need to be logged in to an account of the same name as the one that created the configuration file. It must also have system administrator privileges.

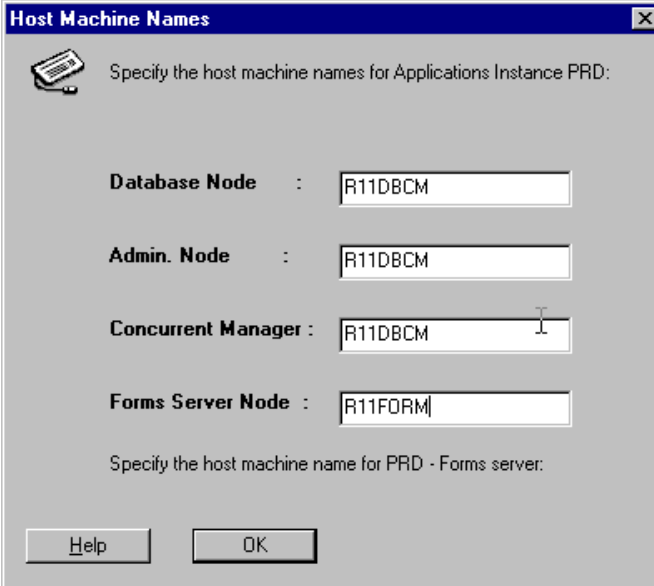
### Step 7. Choose the environment

Click on the environment type you want to configure for your installation. Choose a full production environment, a Vision Demo environment, a test environment, or some combination of these.



You will be prompted to enter configuration parameters for each of the environments that you specify on this screen. These parameters will populate the configuration file, which can contain configuration information for one production environment, one Vision Demo environment, one test environment, and one single-node server or set of servers. For example, one configuration file cannot contain configuration information for two test systems. If you want to install two test systems, you must create two separate configuration files.

When you choose multi-node, the configuration file instructs the Installer to install only the pertinent Application server (such as the forms server) products on each machine. The next screen asks for the name of the host machines for each of the servers.



The image shows a Windows-style dialog box titled "Host Machine Names". It contains a small icon of a floppy disk and the text "Specify the host machine names for Applications Instance PRD:". Below this, there are four rows of labels and text boxes: "Database Node" with "R11DBCM", "Admin. Node" with "R11DBCM", "Concurrent Manager" with "R11DBCM", and "Forms Server Node" with "R11FORM". At the bottom, there is a prompt "Specify the host machine name for PRD - Forms server:" and two buttons labeled "Help" and "OK".

You can provide two, three, or four different host machine names on this screen, and you need to complete the information for each of the environments you have chosen (test, demo, or production). If you do not designate at least 2 host machines, One-Hour Install asks if you want to default to a single-node installation.

### Step 8. Accept or change default parameters

Once you have designated the host machines, you must set up the parameter values for the directories and ports for your installation as well as other configuration information such as the Applications top directory, network port numbers, and database file directories. The next screen asks you whether you will use the default installation parameters. If the defaults suit your needs, click OK to accept them. Otherwise, click No to make changes.

**Additional Information:** See Chapter 5 for more information about configuration parameters.

The Installer then displays a series of screens that display the default parameters. The content and order of the screens is determined by the number of machine names you provided for the multi-node installation. The screens step through the setup for each of the servers. If one machine hosts two or more servers, however,

some of the information may have been obtained from previous screens, so the Oracle Installer does not need to ask for the information a second time.

**Step 9. Save configuration file**

Once you have provided all the configuration information, One-Hour Install saves it with the file name and in the location you provided in Step 6.

## The Execution Plan

After you save the configuration file, the Oracle Installer presents a final screen, the execution plan screen, summarizing the steps to complete the installation.

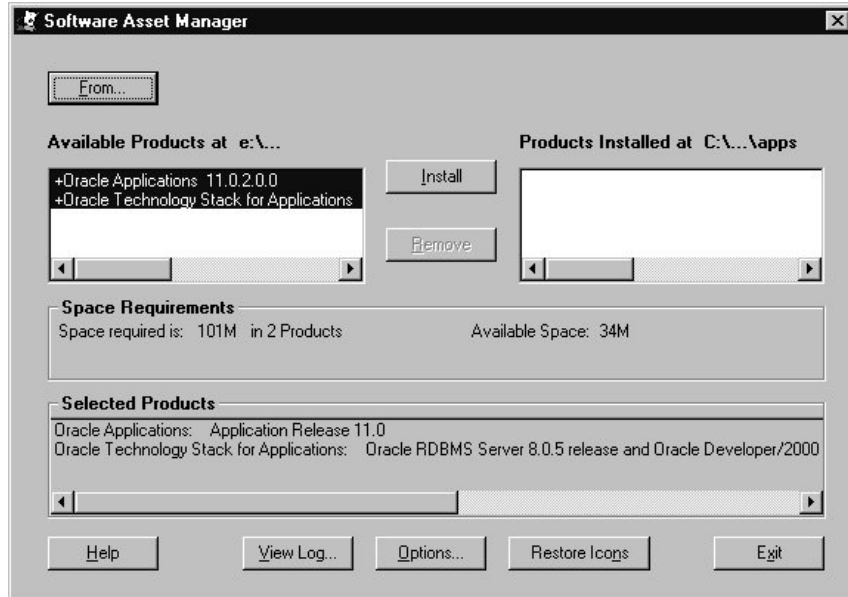
The Oracle Installer writes the execution plan as a text file in the same directory location you provided for the configuration file in Step 6. The execution plan's file name is either PRD\_env.pln, VIS\_env.pln, or TST\_env.pln, depending on whether you created the configuration file for a production, Vision Demo, or test environment. The steps in the execution plan are specific to the configuration file you created. Print the execution plan file, and use it with the corresponding configuration file.

When you choose OK from the Execution Plan screen, One-Hour Install displays the Software Asset Manager screen. From this screen, you can choose to proceed with the installation. We recommend, however, that you choose Cancel at this point, and rerun the Oracle Installer after you have reviewed all the steps of the execution plan. The execution plan may have additional steps you should perform before you use the configuration file for installation.

## Install Using the Configuration File Option

When you start the Oracle Installer, choose the Multi-Node and Install Using Configuration File options from the first several screens. The Installer asks for the name of the configuration file to use. You can copy the configuration file and execution plan file from one machine to another before you run the Installer.

After you accept the parameters or set up your own, the Software Asset Manager screen appears showing which product sets will be installed.



Verify that the information on this screen is correct. For example, if the screen indicates a production database will be installed, and you meant to install a test database environment or a Vision Demo database environment, you can now cancel the installation and begin the process again to enter the correct installation information. If the information is correct, click Install. Once the installation is complete, proceed with the post-install instructions in Chapter 4.



---

---

## Post-Install Tasks

No matter what type of installation you choose, you must set up your servers and perform other optional tasks, such as installing additional products, installing Multiple Reporting Currencies, or installing localizations. Because these post-install steps can be complex, the instructions in this chapter refer you to other manuals and online documentation where appropriate.

The post-install tasks in this chapter are divided into two categories: general and optional. You perform general tasks after you install Oracle Applications. After you complete the general tasks, you can perform the optional tasks to further customize your installation.

### General Post-Install Tasks

The tasks in the section are required to run either Oracle Applications or specific Oracle Applications products. They include rebooting your system, changing the SYS and SYSTEM account passwords, activating additional products, and starting Oracle Applications.

#### ►► Reboot your system

Reboot your NT system and log back in as the user that ran the One-Hour Install.

#### ►► Access the One-Hour Install portal

The One-Hour Install Portal provides information and utilities that makes it easy to administer and deploy Oracle Applications. It is a website created automatically during the One-Hour Install process and is customized to suit your environment.

After you have finished running One-Hour Install, and have rebooted your system, you can access the One-Hour Install Portal through a standard browser using the following URL:

`http://<machine_name_of_your_forms_server>`

For example, if you have configured One-Hour Install to install the forms server on the machine with a node name R11FORM.MYCOMPANY.COM, you would use the following URL to connect to the One-Hour Install Portal:

`http://R11FORM.MYCOMPANY.COM`

Refer to the *One-Hour Install Release Notes* for descriptions of the features provided by the One-Hour Install Portal.

### ►►Change SYS and SYSTEM account passwords

The default passwords for the SYS account and SYSTEM account for your Oracle8 database are *change\_on\_install* and *manager*, respectively. To maintain database security and restrict access to these accounts, you must change these passwords.

**Additional Information:** Managing User Privileges and Roles,  
*Oracle8 Administrator's Guide*

### ►►Activate additional products

Only Application Object Library is activated in the database. You will need to activate any other products that you license with AutoInstall. All required files already exist in APPL\_TOP.

To activate additional products:

1. Run AutoInstall on the administration server.
2. On the Select products to install or upgrade screen, set the action for any products you license to Install. Although the action is Install, One-Hour Install has already installed all products in the database. In this case, setting the action to Install *activates* a product for use.
3. On the Choose overall tasks and their parameters screen, choose only:
  - Create Applications registry subkey
  - Install or upgrade database objects
4. From the AutoInstall Main Menu, choose the Run the selected tasks option.

This operation is complete in about five minutes.

**Additional Information:** Using AutoInstall, *Oracle Applications Installation*

## Optional Post-Install Tasks

Once you finish the general tasks, you can customize your installation further with the following optional tasks. The tasks in this section may be specific to your installation. Not all installations require these tasks.

- Reconfigure Oracle Applications database and modify init.ora file
- Convert database to Multi-Org
- Convert to Multiple Reporting Currencies (MRC)
- Install localization products
- Set Up TCF Socket Server

### ►► Reconfigure Oracle Applications database and modify init.ora file

The Oracle Applications database is sized to run Application Object Library. Detailed information about the sizing of the database is provided in Chapter 5. As you activate additional products, you should also reconfigure the database. You may also need to modify the init.ora file for your new configuration. The init.ora file is in the ORACLE\_HOME\database directory and is named init<ORACLE\_SID>.ora.

**Additional Information:** Tablespace Requirements, *Oracle Applications Installation*; Initialization Parameters, *Oracle8 Reference*

### ►► Convert database to Multi-Org

The One-Hour Install database is not enabled for Multi-Org. If you want Multi-Org architecture in your installation, use AD Administration to convert your database.

**Additional Information:** Installation Utilities, *Oracle Applications Installation*

### ►► Convert to Multiple Reporting Currencies (MRC)

The One-Hour Install database is not enabled to use MRC. If your installation requires multiple report currencies, refer to the instructions on *Oracle MetaLink* for installing MRC support.

After converting your database to MRC, you must apply the 11.0.2 Maintenance Pack for MRC. You will need to apply it on all application tiers. The 11.0.2

Maintenance Packs are not included in this Oracle Applications One-Hour Install release. They are available on *Oracle Applications Release 11.0.2 CD*.

---

---

**Note:** The Vision Demo database and test database use the same APPL\_TOP. The Vision Demo database has MRC installed, however, and the test database does not. If you install both environments, you must apply the file portion of MRC 11.0.2 Maintenance Pack (copy and generate drivers). Using the same APPL\_TOP for the test environment without installing MRC may cause discrepancies.

---

---

### ►► Install localization products

The APPL\_TOP created by One-Hour Install includes all files belonging to localizations at the base release (11.0) level. If you need any localization modules, you must first install them in the database using AutoInstall, then apply the Maintenance Pack for the licensed localization product.

To install localization products:

1. Create tablespaces.  
Create a data tablespace and index tablespace for the localization products you will install. For example, if you are installing European Localizations, you must create two tablespaces: JED for data and JEX for indexes.
2. Run AutoInstall on the administration server.
3. Select the required localization products on the Select modules screen.
4. On the Choose database parameters screen, verify that the tablespaces are assigned correctly.
5. On the Choose overall tasks and their parameters screen, do the following:
  - type *database* to select database tasks
  - set Create Applications environment file to Yes
  - set Verify files necessary for runtime to Yes
6. From the AutoInstall Main Menu, choose to Run the selected tasks.

After installing localizations, you must apply the 11.0.2 Maintenance Pack for the these localizations on all application tiers. These maintenance packs are not

included in the Oracle Applications One-Hour Install release. They are available on *Oracle Applications Release 11.0.2 CD*.

---

---

**Note:** The Vision Demo database and test database use the same APPL\_TOP. The Vision Demo database has European Localizations installed, however, and the test database does not. If you install both environments, you must apply the file portion of the 11.0.2 Maintenance Pack (copy and generate drivers) or European Localizations (JE). Using the same APPL\_TOP for the test environment without installing European localizations may cause discrepancies.

---

---

### ►► Set up TCF SocketServer

TCF SocketServer is not configured by One-Hour Install. Full instructions on administering the TCF SocketServer are included in the Release 11.0.2 Updates to the *System Administrator's Guide*. See revision 3 of the *Oracle Applications Documentation Library CD* or *Oracle MetaLink*.

The steps are:

1. Select a port on the web server host.
2. Define and set two Profiles at the Site level:
  - TCF:HOST = <host name>
  - TCF:PORT = <port number>
3. Change directories to the web server's JAVA\_TOP.
  - ensure that the CLASSPATH environment variable includes both JAVA\_TOP and the JDBC support classes
  - and ensure that the LD\_LIBRARY\_PATH variable includes the JDBC library
4. Execute the Java Runtime Environment.

```
java oracle.apps.fnd.tcf.SocketServer <port number> &
```



---

---

# One-Hour Install Specifications

This chapter contains defaults and specifications that One-Hour Install uses during installation. It contains the following sections:

- **Configuration File Parameter Defaults**  
Contains tables that show the default values for the configuration file parameters. Oracle Installer uses these parameters to complete your installation.
- **Restored Databases**  
Provides details about the databases restored by One-Hour Install.
- **Application and Forms Server Settings**  
Lists the settings One-Hour Install uses when setting up the Oracle Application Server and the forms server.
- **Disk Space Requirements**  
Contains a table that lists the disk space requirements for each environment.
- **Installation Rules for Defaults**  
Lists the rules that One-Hour Install uses to construct the environments when you accept the installation defaults.

## Configuration File Parameter Defaults

The default values in the configuration file used by the Oracle Installer are somewhat different for a production environment, a Vision Demo environment, and a test environment. The default values for these environments are listed in the

following table so that you can refer to them in the future, if necessary. If you need to customize these settings, change the defaults during the installation process.

**Table 5-1 Configuration file defaults**

<b>Name</b>	<b>Description</b>	<b>Production</b>	<b>Vision Demo</b>	<b>Test</b>
Oracle Base	Location of the Oracle Base directory	C:\oa	C:\oa	C:\oa
Oracle Home	Location of the Oracle Home directory	C:\oracle\orant	C:\oracle\orant	C:\oracle\orant
APPL_TOP	Location of the Applications top directory	C:\oracle\applprod	C:\oracle\appltst	C:\oracle\appltst
Oracle SID	Oracle SID for the instance	PROD	VD11	TEST
Database Port	Net8 listener port of the database	1521*	1523*	1525*
System Files (Disk ID dynamically determined)	Location of Database File System 1	D:\ORADATA\PROD	D:\ORADATA\VD11	D:\ORADATA\TEST
Log Files (Disk ID dynamically determined)	Location of Database File System 2	D:\ORADATA\PROD	D:\ORADATA\VD11	D:\ORADATA\TEST
Data Files (dynamically determined)	Location of Database File System 3	D:\ORADATA\PROD	D:\ORADATA\VD11	D:\ORADATA\TEST
Index Files (Disk ID dynamically determined)	Location of Database File System 4	D:\ORADATA\PROD	D:\ORADATA\VD11	D:\ORADATA\TEST
RPC Port	Net8 listener port of the Apps RPC processes	1522*	1524*	1526*
UDP Port	Oracle Application Server UDP port	2649*	2649*	2649*
Admin Port	Oracle Application Server Admin port	8888	8888	8888
Web Port	Forms Web Applications Server port for Forms	8000*	8001*	8002*
Forms Port	Forms Server port	9000*	9001*	9002*

\* The port numbers in this table assume that you are installing all three environments. If you do not, One-Hour Install assigns port numbers in increments of 1 or 2, based on the type of port and which environments you install. So, for example, if you install a Vision Demo environment and a test environment on the same NT system, the Net8 listener port numbers will be 1521 for the Vision Demo environment and 1523 for the test environment. If you install only a test environment, its Net8 listener port number will be 1521.

---

## Restored Databases

Depending on the environment you are installing, One-Hour Install restores different databases for each environment. This section contains a description of each database.

### Production and Test Database

The production and test database restored by One-Hour Install is a fresh installation of an Oracle Applications Release 11.0 database created on Oracle8 Server Release 8.0.5.

The most current Oracle Applications Release Maintenance Pack was applied to this database. Refer to the Release Notes or to the readme file to see what version of the Maintenance Pack was applied. All Oracle Applications Release 11.0 base products are fully installed in the database, but only AOL is activated. The init.ora file for the database is in the ORACLE\_HOME\database directory and is named init<ORACLE\_SID>.ora.

The database fully expands to about 3.3 GB, and has system tablespace, temp tablespaces, and individual data and index tablespaces for each product.

There are seven rollback segments, RBS01 through RBS07, configured in the rollback segment tablespace. There is one control file and three redo log files. Table 5-2 shows the size of the redo log files, rollback tablespace, system tablespace, and temp tablespace.

**Table 5-2 Database files, rollback, system, and temp tablespace size**

Name	Description	Size
cntrltest.ctl	Control file	5 MB
log1.dbf	Log file	5 MB
log2.dbf	Log file	5 MB
log3.dbf	Log file	5 MB
system1.dbf	System tablespace	600 MB
system2.dbf	System tablespace	600 MB
appltmp.dbf	Temp tablespace	100 MB
ctxd.dbf	ConText server	1 MB

Table 5–3 shows the size for each Oracle Application product data and index tablespace.

**Table 5–3 Product data and index database files and size**

<b>Product data database files</b>	<b>Size</b>	<b>Product index database files</b>	<b>Size</b>
akd1.dbf	20 MB	akx1.dbf	8 MB
alrd1.dbf	1 MB	alrx1.dbf	6 MB
apd1.dbf	22 MB	apx1.dbf	27 MB
applsystd1.dbf	200 MB	applsystx1.dbf	125 MB
ard1.dbf	105 MB	arx1.dbf	158 MB
axd1.dbf	22 MB	axx1.dbf	11 MB
azd1.dbf	1 MB	azx1.dbf	1 MB
bomd1.dbf	17 MB	bomx1.dbf	12 MB
ced1.dbf	1 MB	cex1.dbf	1 MB
cnd1.dbf	43 MB	cnx1.dbf	33 MB
crpd1.dbf	1 MB	crpx1.dbf	1 MB
csd1.dbf	8 MB	csx1.dbf	12 MB
czd1.dbf	1 MB	czx1.dbf	1 MB
ecd1.dbf	12 MB	ecx1.dbf	13 MB
engd1.dbf	1 MB	engx1.dbf	1 MB
fad1.dbf	22 MB	fax1.dbf	11 MB
flmd1.dbf	1 MB	flmx1.dbf	1 MB
gld1.dbf	22 MB	glx1.dbf	11 MB
hrd1.dbf	106 MB	hrx1.dbf	159 MB
hxt1.dbf	5 MB	hxtx1.dbf	1 MB
icxd1.dbf	1 MB	icxx1.dbf	1 MB
invd1.dbf	54 MB	invx1.dbf	54 MB
jad1.dbf	1 MB	jax1.dbf	1 MB
jed1.dbf	1 MB	jex1.dbf	1 MB
jgd1.dbf	1 MB	jgx1.dbf	1 MB

**Table 5–3 Product data and index database files and size**

Product data database files	Size	Product index database files	Size
mfgd1.dbf	1 MB	mfgx1.dbf	1 MB
mrpd1.dbf	12 MB	mrpx1.dbf	12 MB
mscd1.dbf	1 MB	mscx1.dbf	1 MB
oed1.dbf	22 MB	oex1.dbf	16 MB
osmd1.dbf	11 MB	osmx1.dbf	22 MB
otad1.dbf	1 MB	otax1.dbf	2 MB
pad1.dbf	127 MB	pax1.dbf	150 MB
pjmd1.dbf	1 MB	pjmx1.dbf	1 MB
pod1.dbf	22 MB	pox1.dbf	27 MB
qad1.dbf	1 MB	qax1.dbf	1 MB
rgd1.dbf	29 MB	rgx1.dbf	22 MB
rlad1.dbf	1 MB	rlax1.dbf	1 MB
sspd1.dbf	1 MB	sspx1.dbf	1 MB
vehd1.dbf	1 MB	vehx1.dbf	1 MB
wipd1.dbf	1MB	wipx1.dbf	22 MB

## Vision Demonstration Database

You can also restore the Vision Demonstration Database Release 11.0.2 with One-Hour Install. Specifications for this database are in the *Oracle Applications Vision Demonstration Release 11.0.2 Release Notes*. (Do not follow any installation instructions in those Release Notes, as One-Hour Install restores this database for you.)

The init.ora file for the database is in the ORACLE\_HOME\database directory and is named init<ORACLE\_SID>.ora.

**Table 5–4 Tablespace names and sizes**

Tablespace Name	Files	File Size	Total Size
SYSTEM	sys1vdl1.dbf	400 MB	1.2 GB
	sys2vd11.dbf	400 MB	
	sys3vd11.dbf	400 MB	

**Table 5–4 Tablespace names and sizes**

Tablespace Name	Files	File Size	Total Size
User (USER_DATA)	dat1vd11.dbf	500 MB	2.0 GB
	da21vd11.dbf	500 MB	
	dat3vd11.dbf	500 MB	
	dat4vd11.dbf	500 MB	
Index (USER_IDX)	idx1vd11.dbf	500 MB	1.0 GB
	idx2vd11.dbf	500 MB	
Rollback (RBS)	rbs1vd11.dbf	200 MB	200 MB
Temporary (TEMP)	temp1vd11.dbf	200 MB	200 MB
RDBMS Log Files	log1vd11.dbf	10 MB	30 MB
	log2vd11.dbf	10 MB	
	log3vd11.dbf	10 MB	
Control Files	cntlvd11.dbf	2 MB	2 MB
Total Tablespace			4.63 GB

## Application and Forms Server Settings

One-Hour Install uses certain default settings for the Oracle Application server and the forms server.

### Oracle Application Server Settings

Configuration requirements for Oracle Application server settings are explained in the Finishing Your Installation or Upgrade chapter of *Oracle Applications Installation*. The following tables list the settings used by One-Hour Install.

**Table 5–5 Virtual directories**

File System Directory	Flag	Virtual Path
%APPLTMP%	NR	/OA_TEMP/
%APPL_TOP%\doc\doc\	NR	/OA_DOC/
%APPL_TOP%\html\html\	NR	/OA_HTML/
%APPL_TOP%\html\html\bin\	CN	/OA_HTML/bin/
%ORACLE_HOME%\forms45\java\	NR	/OA_JAVA/
%ORACLE_HOME%\forms45\java\oracle\apps\media\	NR	/OA_MEDIA/

**Table 5–6 Java Cartridge Path**

Virtual Path	Application	Physical Path
/OA_JAVA_SERV	JAVA	%ORACLE_HOME%\forms45\java

**Table 5–7 DAD settings**

Parameter	Value
DAD Name	<Oracle SID>
Database User	APPS
Identified by	APPS
Database User Password	APPS
ORACLE HOME	%ORACLE_HOME%
Net8 Service	<Oracle SID>
NLS Language	American

**Table 5–8 PL/SQL Cartridge settings**

Parameter	Value
Name of PL/SQL Agent	<Oracle SID>
Name of DAD to be used	<Oracle SID>
Protect PL/SQL Agent	True
Authorized Ports	<Web Listener Port>

**Table 5–9 PL/SQL virtual path**

Virtual Path	App	Physical Path
/<Oracle SID>/plsql	PLSQL	%ORACLE_HOME%\ows\3.0\bin

## Forms Server Settings

Configuration requirements for the forms server are explained in the *Finishing Your Installation or Upgrade* chapter of *Oracle Applications Installation*. The following tables list the settings used by One-Hour Install.

**Table 5–10 New Cartridge Configuration settings**

Parameter	Value
Cartridge Name	<Oracle SID>
Object Path	%ORACLE_HOME%\bin\f45webc.so
Entry Point	form_entry

**Table 5–11 Virtual paths**

Parameter	Value
/Oracle SID	%ORACLE_HOME%\bin

**Table 5–12 Cartridge configuration screen values**

Parameter	Value
baseHTML	%OA_HTML%\afsampeld.htm
serverPort	<Forms Port>
userid	APPLSYSPUB/PUB@<Oracle SID>
fndnam	APPS

## Disk Space Requirements

The following table contains the disk space requirements for the files in each environment that you can install using One-Hour Install.

**Table 5–13 Disk space requirements for each environment**

Files	Production	Vision Demo	Test
Technology stack product files (ORACLE_HOME directory)	0.6 GB	0.6 GB	0.6 GB
Applications product files (APPL_TOP directory)	1.8 GB	1.8 GB	1.8 GB
Database and log files	3.3 GB	4.7 GB	3.3 GB

**Table 5–13** *Disk space requirements for each environment*

<b>Files</b>	<b>Production</b>	<b>Vision Demo</b>	<b>Test</b>
Total	5.6 GB	7.0 GB	5.6 GB

## Installation Rules for Defaults

If you accept default settings, One-Hour Install uses the following rules to construct the environments of your Oracle Applications installation:

- One ORACLE\_HOME directory per NT system. This means that all your environments share the same technology stack.
- Each production environment must have its own Applications top directory (APPL\_TOP).
- A Vision Demo environment and a test environment share the same Applications top directory.
- Different application tiers (such as database server, concurrent processing server) can co-exist on the same NT system. When they do, the different tiers share the Applications top directory of their correspondent environments.
- Each environment has its own database instance and associated database and log files.
- Whenever possible, database and log files are spread across different disks. One-Hour Install detects how many disks that you have and how much disk space is available to dynamically determine how to lay out the system, log, data, and index files associated with each database instance.



---

---

# Index

## A

---

### additional products

- activating, 4-2

### admin port

- defaults for, 5-2
- description of, 2-4

### administration server

- in multi-node installation, 3-1
- in single-node installation, 2-1

### APPL\_TOP, 2-5, 4-2, 4-4, 4-5

- defaults for, 5-2

### Applications product files

- disk space for, 5-8

### Applications top directory, 2-5

### AutoInstall

- activating products with, 4-2
- running manual installation, vii
- using to install localizations, 4-4
- when to use, vii

## C

---

### cartridge configuration screen values

- for forms server, 5-8

### CDs

- running installation from, viii, 1-1, 1-2

### chapters

- list of, viii

### concurrent processing server

- in a single-node installation, 2-1
- in multi-node installation, 3-1

- sharing top directory, 5-9

### configuration file

- creating, 2-1, 3-3

- for each environment, 2-4, 3-4

- list of defaults, 5-1

- naming, 3-3

- portability, 3-3

- providing parameters for, 2-4

- saving, 3-6

### control files

- for database, 5-3

- sizes for tablespace, 5-6

- customizing parameters, 2-4

## D

---

### DAD settings

- for Oracle Application Server, 5-7

### data files

- default locations for, 5-2

### database

- file system, 2-5

- maintaining security, 4-2

- reconfiguring, 4-3

- Vision Demo specifications, 5-5

### database files

- disk space for, 5-8

### database instance

- location of files, 2-5

### database objects

- installing or upgrading, 4-2

### database port

- description of, 2-5

### database server

- in multi-node installation, 3-1

- sharing top directory, 5-9

- databases
  - restoring, 5-3
- DBFS1 through DBFS4, 2-5
- default installation parameters
  - description of, viii
- defaults
  - system rules for, 5-9
- disk space
  - requirements for environment files, 5-8

## E

---

- environments
  - choosing, 2-2, 3-4
  - disk space requirements for files, 5-8
  - on the same machine, 2-3
  - production, 2-1
  - test, 2-1
  - Vision Demo, 2-1
- execution plan, 3-6

## F

---

- file system, 3-1
  - shared, 2-3
- finishing the installation, 2-6, 3-6
- forms port
  - defaults for, 5-2
  - description of, 2-5
- forms server, 3-1
  - cartridge configuration screen values, 5-8
  - configuration requirements for, 5-8
  - in a single-node installation, 2-1
  - in multi-node installation, 3-1
  - New Cartridge Configuration settings, 5-8
  - settings, 5-6, 5-8
  - virtual paths for, 5-8
- forms server and web server
  - installed together, 3-1

## H

---

- host machines
  - assigning servers to, 3-4

## I

---

- index files
  - default locations for, 5-2
- init.ora file
  - filename and location of, 4-3
  - for database, 5-3, 5-5
  - modifying, 4-3
- installation
  - default rules for, 5-9
  - finishing, 2-6
  - from a staging area, 1-3
  - from the CDs, 1-2
- installation parameters
  - customizing, 2-4
  - defaults, 2-3, 3-5
  - setting up, 3-5
  - using defaults, viii
- installed products, 4-2

## J

---

- Java Cartridge Path
  - for Oracle Application Server, 5-7

## L

---

- localizations
  - applying mini-pack for, 4-4
  - installing, 4-4
  - tablespaces for, 4-4
- log files
  - default locations for, 5-2
  - disk space for, 5-8

## M

---

- manual installation
  - using AutoInstall for, vii
- MRC
  - applying mini-pack for, 4-3
  - converting database to, 4-3
  - installing, 4-1
- multi-node install
  - description of, viii
  - finishing, 3-6

- running, 3-1
- Multi-Node Install option
  - choosing, 3-2
- Multi-Org
  - converting database to, 4-3

## N

---

- network port
  - description of, 2-5
- New Cartridge Configuration settings
  - for forms server, 5-8

## O

---

- One-Hour Install
  - when to use, vii
- One-Hour Install Release Notes, ix
- Oracle Application Server
  - configuration requirements, 5-6
  - DAD settings for, 5-7
  - Java Cartridge Path, 5-7
  - PL/SQL Cartridge settings for, 5-7
  - PL/SQL virtual path for, 5-7
  - settings, 5-6
  - virtual directories, 5-6
- Oracle Applications Architecture, ix
- Oracle Applications Installation, ix
- Oracle Base
  - defaults for, 5-2
  - description of, 2-5
- Oracle Home
  - defaults for, 5-2
  - description of, 2-5
- Oracle SID
  - defaults for, 5-2
  - description of, 2-5
- Oracle8 Installation Guide, ix
- Oracle*MetaLink*
  - using, 4-3

## P

---

- PL/SQL Cartridge settings
  - for Oracle Application Server, 5-7

- PL/SQL virtual path
  - for Oracle Application Server, 5-7
- post-install tasks
  - description of, viii
  - general, 4-1
  - optional, 4-3
  - performing, 4-1
- preconfigured database, vii
- production database
  - restored, 5-3
- production environment
  - configuration info for, 3-4, 3-6
  - designating host machine for, 3-5
  - file system, 2-3
  - installing, 3-7
  - installing alone, 2-3
  - installing on a multi-node, 3-4
  - installing on a single node, 2-1
- products
  - installed, vii
  - licensed, 4-2

## R

---

- RBS
  - sizes for tablespace, 5-6
- RDBMS log files
  - sizes for tablespace, 5-6
- rebooting your system, 4-1
- redo log files
  - for database, 5-3
- registry
  - creating subkey, 4-2
- related documentation
  - where to find, viii
- rollback segments
  - for database, 5-3
- rollback tablespace
  - for database, 5-3
- RPC port
  - defaults for, 5-2
  - description of, 2-5

## S

---

- single-node install
  - description of, viii
  - finishing, 2-6
  - running, 2-2
- Single-Node Install option
  - choosing, 2-2
- Software Asset Manager
  - verifying info on, 2-6, 3-6
- STAGE\_HOME directory
  - using, 1-4
- staging area
  - running installation from, viii, 1-1
- SYS
  - changing account password, 4-2
- SYSTEM
  - changing account password, 4-2
  - sizes for tablespace, 5-5
- system files
  - default locations, 5-2
- system tablespace
  - for database, 5-3

## T

---

- tablespace
  - for product data and indexes, 5-4
  - names and sizes, 5-5
- TCF SocketServer
  - setting up, 4-5
- technology stack, vii, ix
  - shared by environments, 2-3
  - sharing products, 3-1
- technology stack product files
  - disk space for, 5-8
- TEMP
  - sizes for tablespace, 5-6
- temp tablespace
  - for database, 5-3
- test database
  - restored, 5-3
- test environment
  - choosing to install, 2-2
  - configuration info for, 3-4, 3-6

- designating host machine for, 3-5
- installing, 3-7
- installing on a multi-node, 3-4
- installing on a single node, 2-1
- shared file system, 2-3

## U

---

- UDP port
  - defaults for, 5-2
  - description of, 2-6
- User Datagram Protocol. *See* UDP.
- USER\_DATA
  - sizes for tablespace, 5-6
- USER\_IDX
  - sizes for tablespace, 5-6

## V

---

- virtual directories
  - for Oracle Application Server, 5-6
- virtual paths
  - for forms server, 5-8
- Vision Demo database, viii
  - choosing to install, 2-2
  - configuration info for, 3-4, 3-6
  - designating host machine for, 3-5
  - installing on a multi-node, 3-4
  - installing on a single node, 2-1
  - restoring database for, 5-5
  - shared file system, 2-3

## W

---

- web listener
  - description of, 2-5
- web port
  - defaults for, 5-2
  - description of, 2-6
- web request broker, 2-6
- web server
  - in a single-node installation, 2-1
  - in multi-node installation, 3-1
- web server and forms server
  - installed together, 3-1